



Monthly Performance Measures Report Palm Beach County



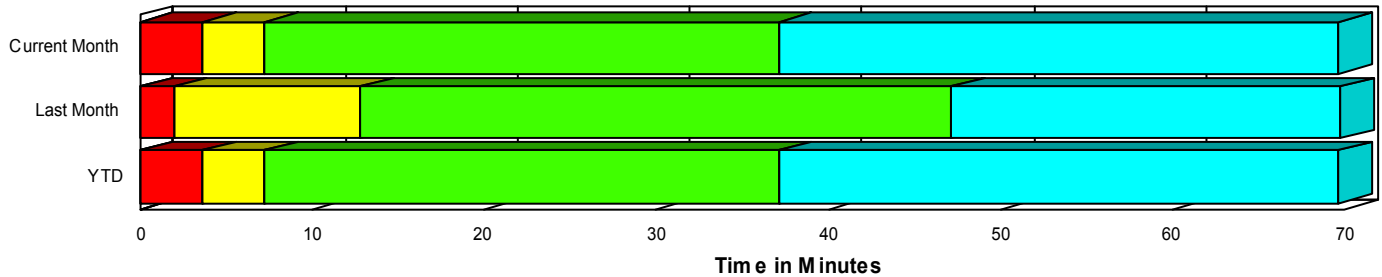
Period From Jan 1, 2009 to Jan 31, 2009

Created on:
February 02, 2009
8:57 am

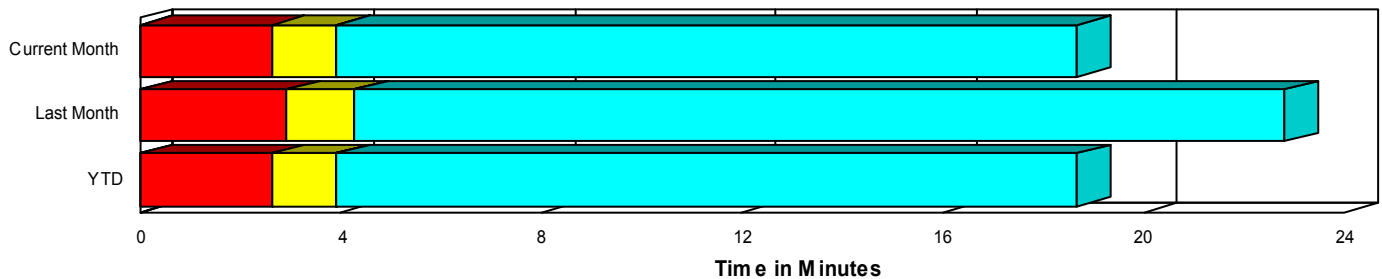
Performance Measures Summary

	Traffic Events (No Lanes Blocked)			Incidents (Lanes Blocked)		
	<u>This Month</u>	<u>Last Month</u>	<u>YTD</u>	<u>This Month</u>	<u>Last Month</u>	<u>YTD</u>
Number of Events	1,259	1,218	1,259	82	72	82
TMC Detection (min.)	0.00	0.00	0.00	0.00	0.00	0.00
TMC Verification (min.)	2.63	2.91	2.63	3.63	1.98	3.63
TMC Response (min.)	4.98	5.36	4.98	7.66	13.33	7.66
RR Dispatch Time (min.)	1.67	1.80	1.67	4.43	8.50	4.43
RR Response Time (min.)	3.40	3.61	3.40	3.23	4.46	3.23
Roadway Clearance (min.)				39.60	42.77	39.60
Event Clearance (min.)	19.73	23.86	19.73	72.06	65.40	72.06
# of Events w/ RR/SIRV	920	924	920	72	61	72
RR/SIRV Responses	920	924	920	72	61	72
RR/SIRV Activities	977	976	977	118	78	118

Incident Clearance TimeLine



Traffic Event(Non-Lane Blockage) Time-Line



■ Avg. TMC Detection Time	■ Avg. Time from TMC Response to Roadway Clearance*
■ Avg. Time from TMC Detection to TMC Verification	■ Avg. Time from Roadway Clearance to Incident/Event Clearance**
■ Avg. Time from TMC Verification to TMC Response	

* Roadway clearance equals all travel lanes open

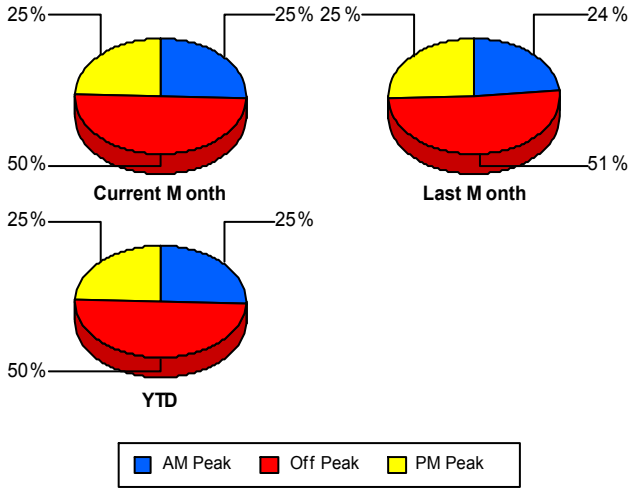
** Incident clearance equals time when last responder has left the scene

Performance Measures by Peak Period

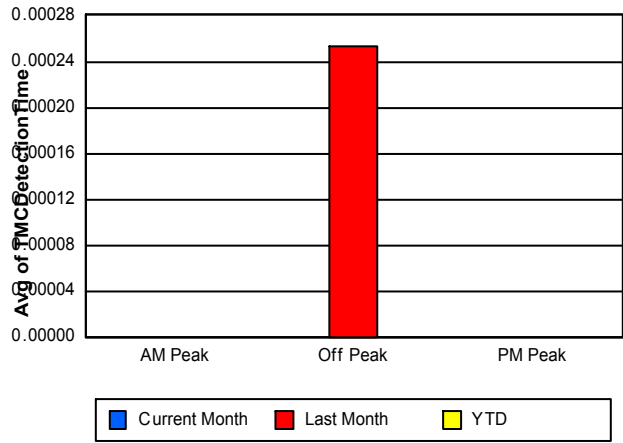
Note: AM peak period is defined as 6am to 10am and PM peak period is defined as 3pm to 7pm.

	AM Peak			Off Peak			PM Peak		
	<u>Current Month</u>	<u>Last Month</u>	<u>YTD</u>	<u>Current Month</u>	<u>Last Month</u>	<u>YTD</u>	<u>Current Month</u>	<u>Last Month</u>	<u>YTD</u>
Number of Events	341	305	341	669	659	669	331	326	331
Number of Incidents	23	21	23	36	31	36	23	20	23
TMC Detection (min.)	0.00	0.00	0.00	0.00	0.00	0.00	0.00	0.00	0.00
TMC Verification (min.)	2.73	2.87	2.73	1.98	2.08	1.98	4.08	4.44	4.08
TMC Response (min.)	3.97	4.08	3.97	6.07	7.02	6.07	5.34	6.01	5.34
RR Dispatch Time (min.)	0.98	1.06	0.98	3.08	3.36	3.08	1.26	1.82	1.26
RR Response Time (min.)	2.99	3.07	2.99	3.18	3.57	3.18	4.07	4.36	4.07
Event Clearance (min.)	20.24	23.40	20.24	24.52	29.10	24.52	22.47	22.90	22.47
Roadway Clearance (min.)	48.94	24.91	48.94	41.82	65.14	41.82	26.77	26.83	26.77
Incident Clearance (min.)	82.64	67.70	82.64	80.44	80.07	80.44	48.37	40.26	48.37
# of Events w/ RR/SIRV	316	291	316	378	393	378	298	301	298
RR/SIRV Responses	316	291	316	378	393	378	298	301	298
RR/SIRV Activities	367	316	367	409	422	409	319	316	319

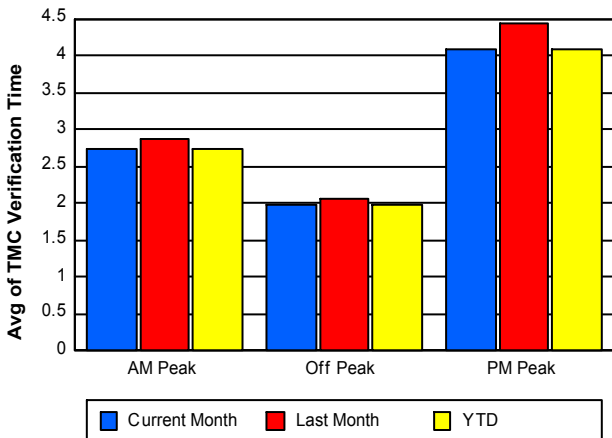
Number of Events / Peak Period



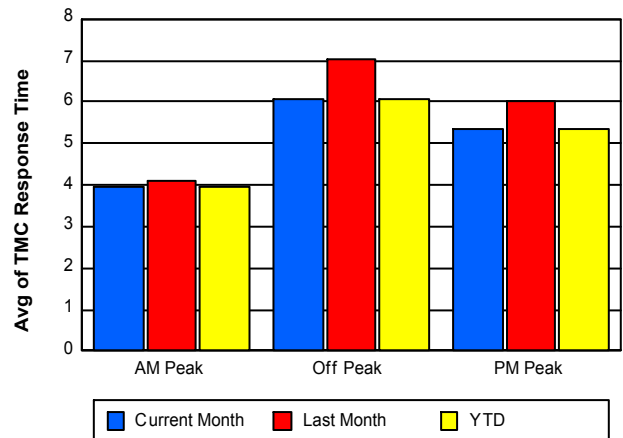
TMC Detection Time



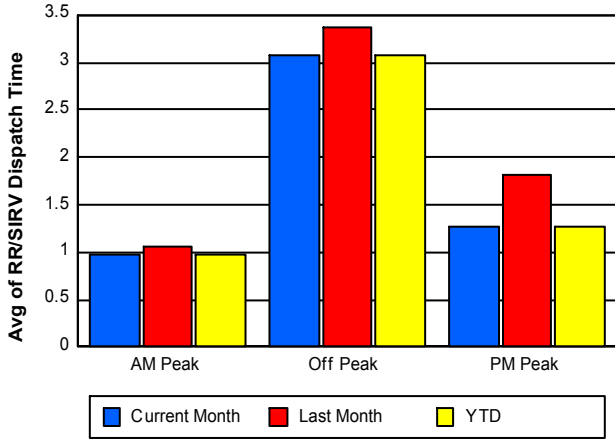
TMC Verification Time



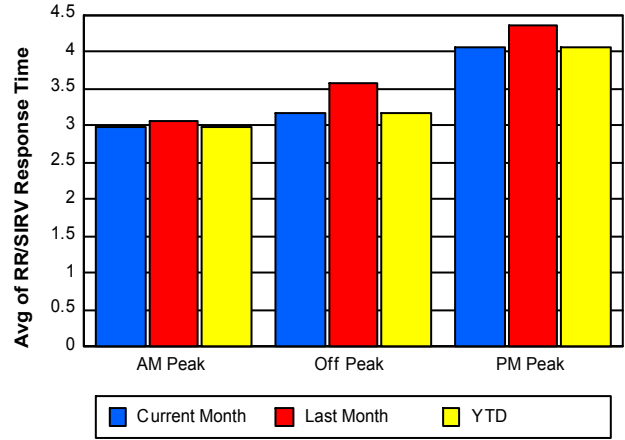
TMC Response Time



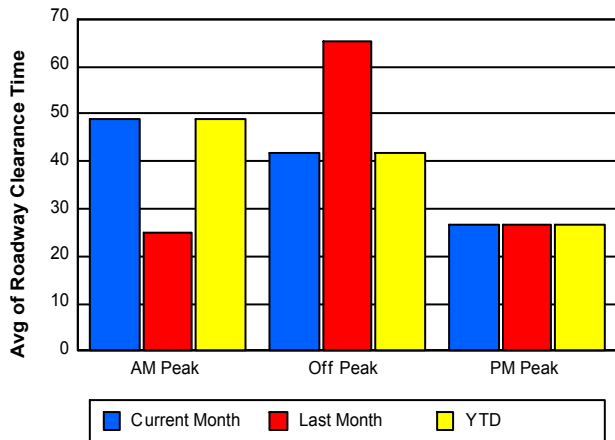
Road Ranger / SIRV Dispatch Time



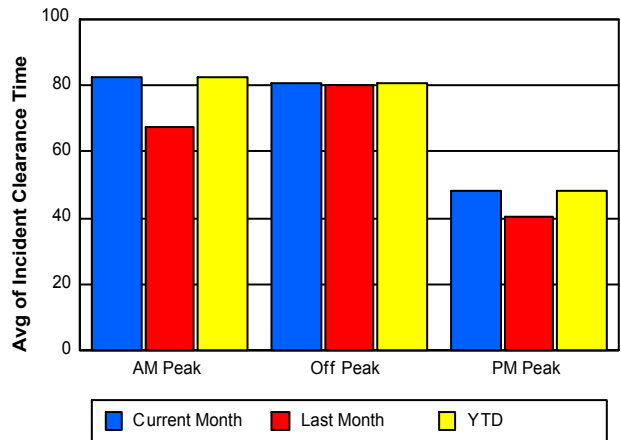
Road Ranger / SIRV Response Time



Roadway Clearance Time (2A)



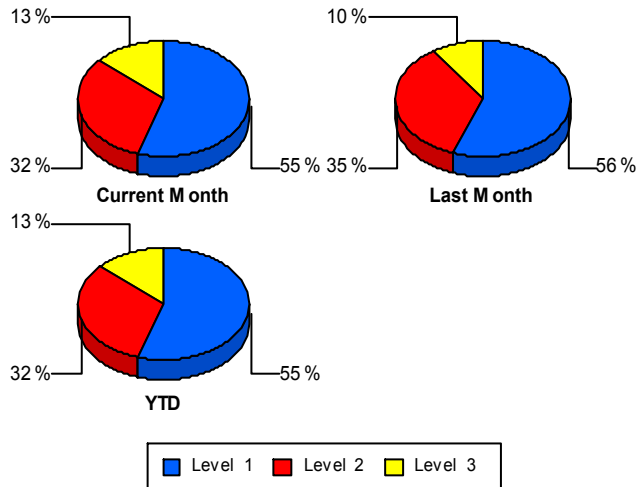
Incident Clearance Time (3B)



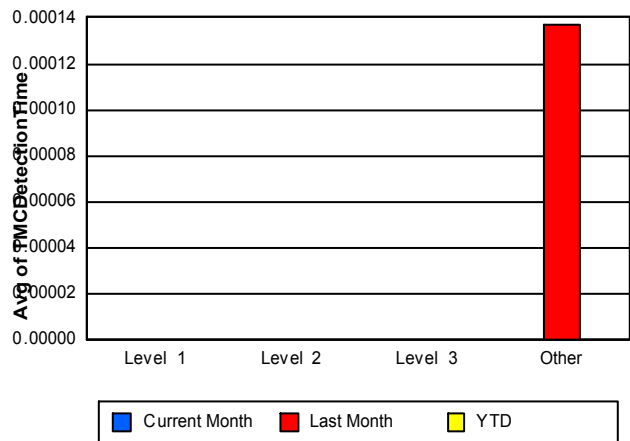
Performance Measures by Severity

	Level 1			Level 2			Level 3			Other		
	<u>This Month</u>	<u>Last Month</u>	<u>YTD</u>	<u>This Month</u>	<u>Last Month</u>	<u>YTD</u>	<u>This Month</u>	<u>Last Month</u>	<u>YTD</u>	<u>This Month</u>	<u>Last Month</u>	<u>YTD</u>
Number of Events	45	40	45	26	25	26	11	7	11	1,259	1,218	1,259
Number of Incidents	45	40	45	26	25	26	11	7	11	0	0	0
TMC Detection (min.)	0.00	0.00	0.00	0.00	0.00	0.00	0.00	0.00	0.00	0.00	0.00	0.00
TMC Verification (min.)	1.64	1.86	1.64	2.55	2.68	2.55	15.39	0.13	15.39	2.63	2.91	2.63
TMC Response (min.)	3.44	6.47	3.44	7.63	7.35	7.63	32.50	59.83	32.50	4.98	5.36	4.98
RR Dispatch Time (min.)	0.85	3.42	0.85	3.89	1.30	3.89	27.29	53.75	27.29	1.67	1.80	1.67
RR Resp. Time (min.)	2.60	3.02	2.60	3.74	6.06	3.74	5.20	6.08	5.20	3.40	3.61	3.40
Event Clearance (min.)	54.85	39.57	54.85	73.62	65.15	73.62	138.80	213.94	138.80	19.73	23.86	19.73
Roadway Clear. (min.)	15.82	13.09	15.82	45.30	47.06	45.30	123.38	197.03	123.38			
Incident Clearance (min.)	54.85	39.57	54.85	73.62	65.15	73.62	138.80	213.94	138.80			
# of Events w/ RR/SIRV	41	34	41	24	20	24	7	7	7	920	924	920
RR/SIRV Responses	41	34	41	24	20	24	7	7	7	920	924	920
RR/SIRV Activities	54	35	54	49	31	49	15	12	15	977	976	977

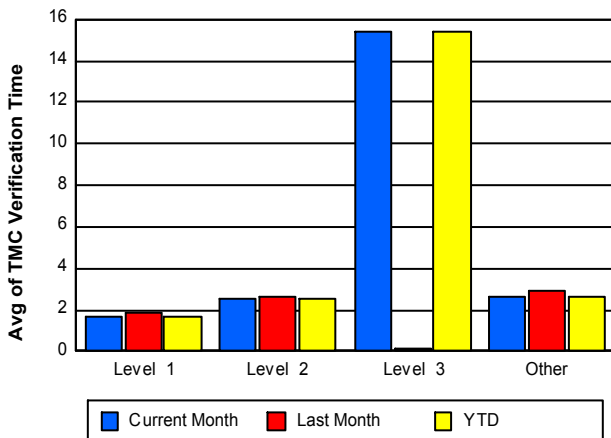
Number of Events / Severity



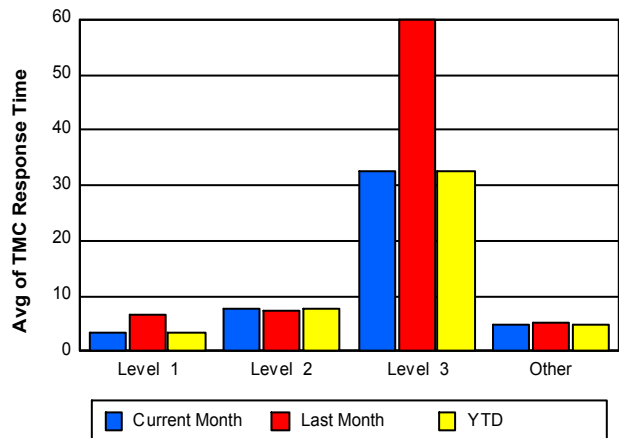
TMC Detection Time



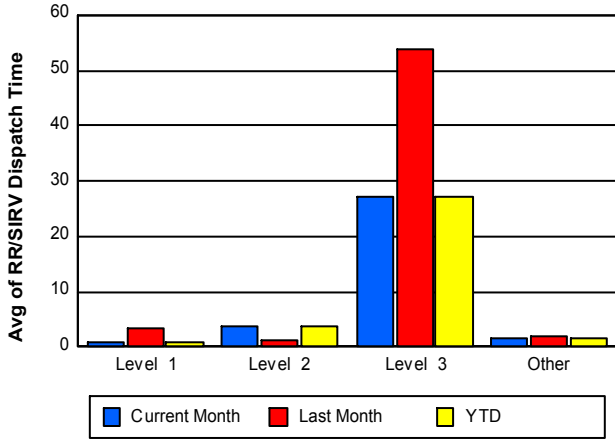
TMC Verification Time



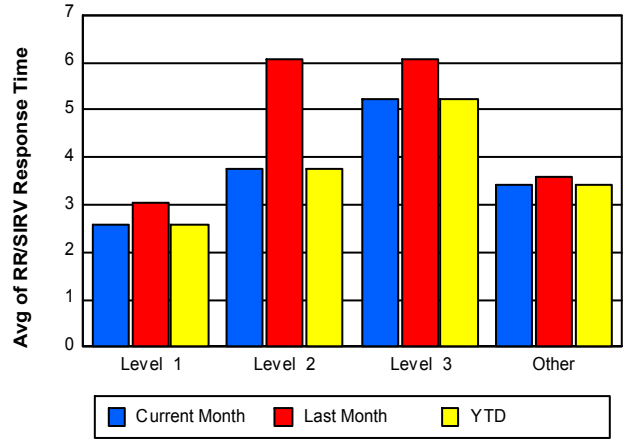
TMC Response Time



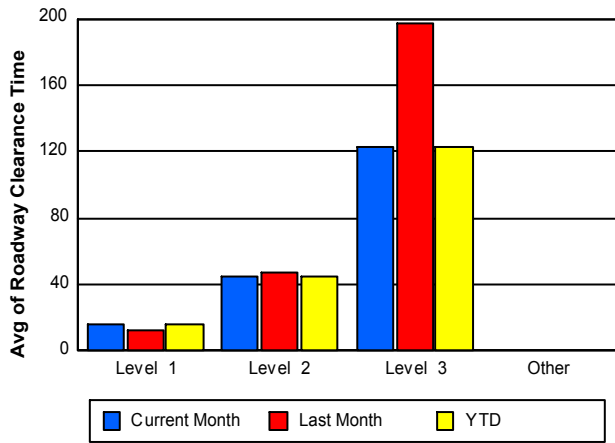
Road Ranger / SIRV Dispatch Time



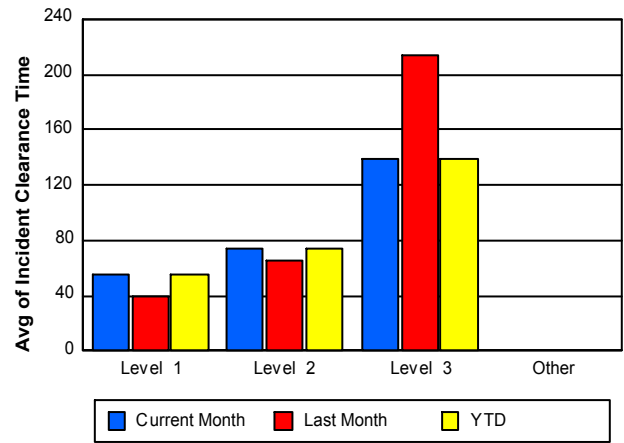
Road Ranger / SIRV Response Time



Roadway Clearance Time (2A)



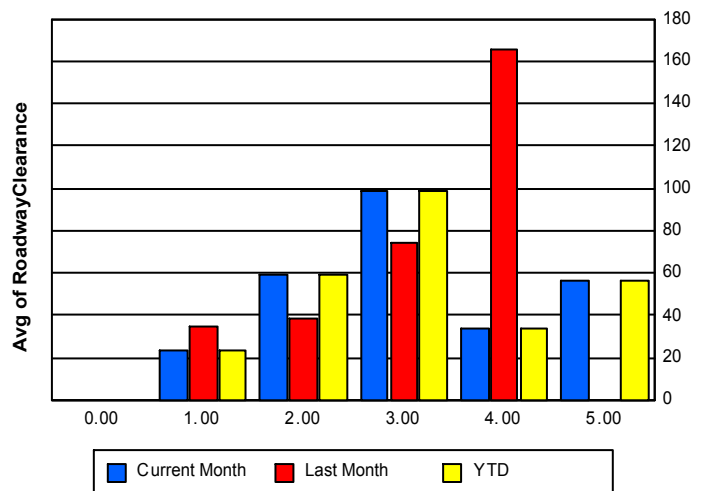
Incident Clearance Time (3B)



Roadway Clearance by Maximum Number of Lanes Blocked

	Current Month	Last Month	YTD
0			
1	23.57	34.90	23.57
2	58.93	38.02	58.93
3	98.54	74.55	98.54
4	33.80	165.13	33.80
5	56.20	0.00	56.20

Roadway Clearance Time(2A)



Performance Measures by Roadway

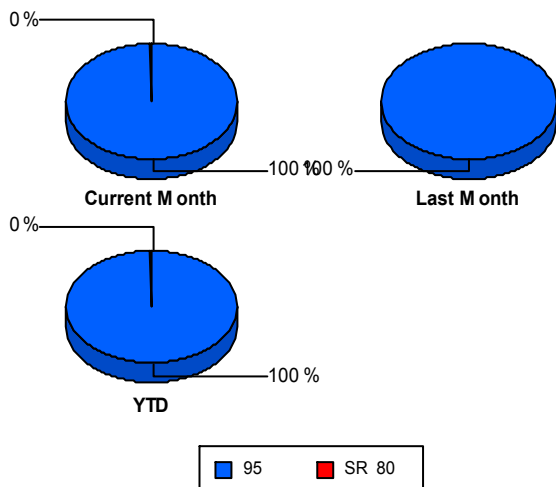
95

	<u>Current Month</u>	<u>Last Month</u>	<u>YTD</u>
Number of Events	1,339	1,290	1,339
Number of Incidents	81	72	81
TMC Detection (min.)	0.00	0.00	0.00
TMC Verification (min.)	2.69	2.86	2.69
TMC Response (min.)	5.18	5.84	5.18
RR Dispatch Time (min.)	1.87	2.21	1.87
RR Resp. Time (min.)	3.39	3.66	3.39
Event Clearance (min.)	22.85	26.18	22.85
Roadway Clear. (min.)	39.66	42.77	39.66
Incident Clearance (min.)	72.41	65.40	72.41
# of Events w/ RR/SIRV	992	985	992
RR/SIRV Responses	992	985	992
RR/SIRV Activities	1,095	1,054	1,095

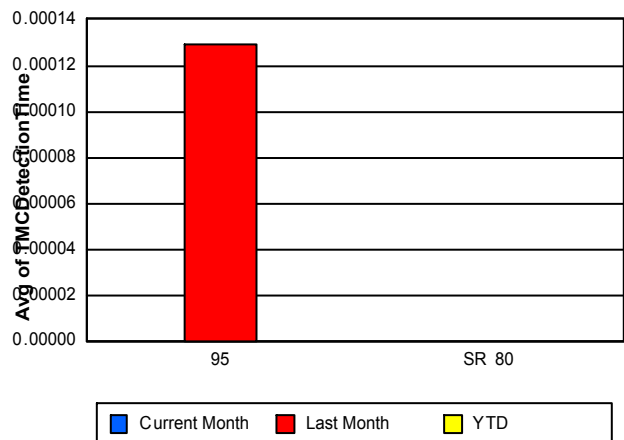
SR 80

	<u>Current Month</u>	<u>YTD</u>
Number of Events	2	2
Number of Incidents	1	1
TMC Detection (min.)	0.00	0.00
TMC Verification (min.)		
TMC Response (min.)		
RR Dispatch Time (min.)		
RR Resp. Time (min.)		
Event Clearance (min.)	71.17	71.17
Roadway Clear. (min.)	34.23	34.23
Incident Clearance (min.)	43.68	43.68
# of Events w/ RR/SIRV	0	0
RR/SIRV Responses	0	0
RR/SIRV Activities	0	0

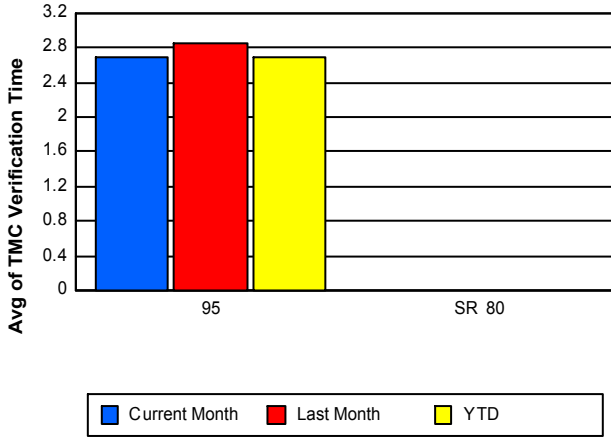
Number of Events / Roadway



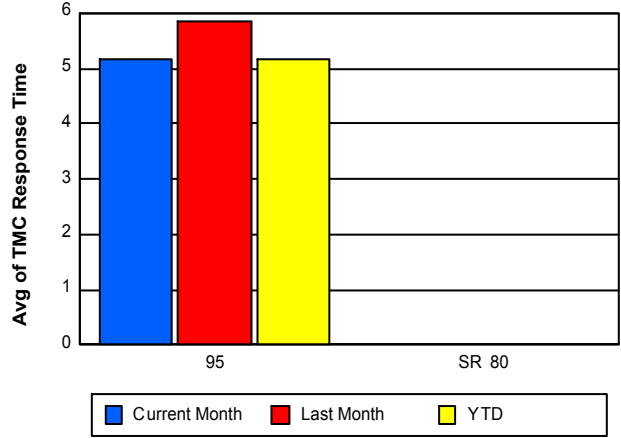
TMC Detection Time



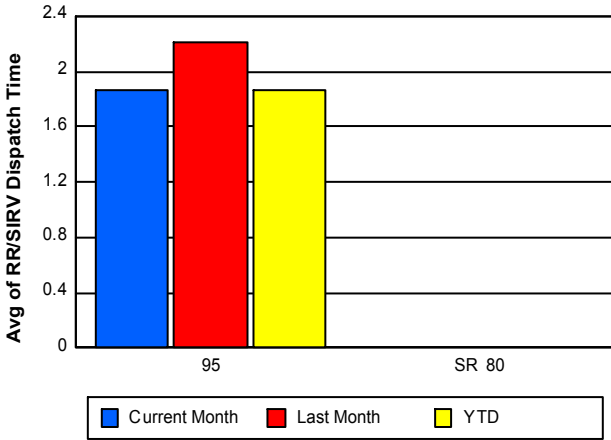
TMC Verification Time



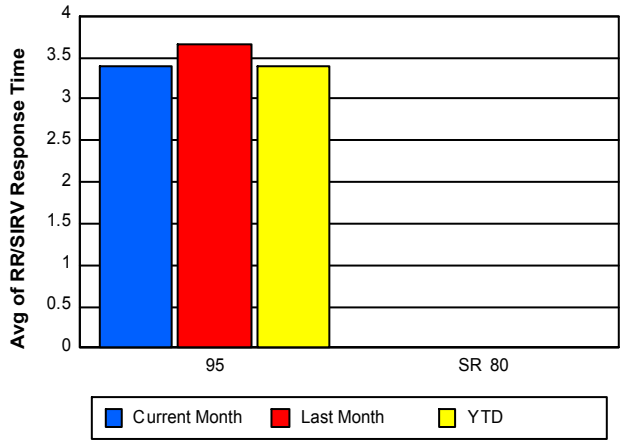
TMC Response Time



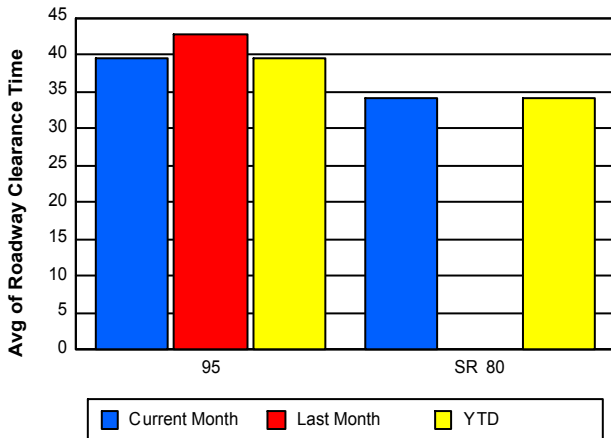
Road Ranger / SIRV Dispatch Time



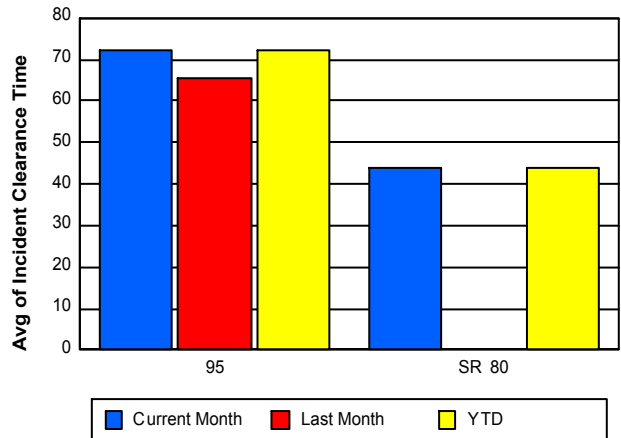
Road Ranger / SIRV Response Time



Roadway Clearance Time (2A)



Incident Clearance Time (3B)



Performance Measures by Event Type

Accident

	<u>Current Month</u>	<u>Last Month</u>	<u>YTD</u>
Number of Events	106	96	106
Number of Incidents	54	46	54
TMC Detection (min.)	0.00	0.00	0.00
TMC Verification (min.)	4.52	2.89	4.52
TMC Response (min.)	8.56	11.67	8.56
RR Dispatch Time (min.)	4.11	7.03	4.11
RR Response Time (min.)	4.45	4.52	4.45
Event Clearance (min.)	61.94	62.55	61.94
Roadway Clearance (min.)	44.19	52.67	44.19
Incident Clearance (min.)	83.51	83.55	83.51
# of Events w/ RR/SIRV	92	83	92
RR/SIRV Assists	92	83	92
RR/SIRV Activities	130	100	130

Debris on Roadway

	<u>Current Month</u>	<u>Last Month</u>	<u>YTD</u>
Number of Events	91	75	91
Number of Incidents	4	3	4
TMC Detection (min.)	0.00	0.00	0.00
TMC Verification (min.)	6.88	6.08	6.88
TMC Response (min.)	7.35	6.07	7.35
RR Dispatch Time (min.)	1.73	1.35	1.73
RR Response Time (min.)	5.60	4.72	5.60
Event Clearance (min.)	11.39	8.80	11.39
Roadway Clearance (min.)	18.00	8.19	18.00
Incident Clearance (min.)	20.01	12.46	20.01
# of Events w/ RR/SIRV	90	75	90
RR/SIRV Assists	90	75	90
RR/SIRV Activities	94	77	94

Disabled Vehicle

	<u>Current Month</u>	<u>Last Month</u>	<u>YTD</u>
Number of Events	881	875	881
Number of Incidents	17	13	17
TMC Detection (min.)	0.00	0.00	0.00
TMC Verification (min.)	2.74	3.30	2.74
TMC Response (min.)	4.07	5.22	4.07
RR Dispatch Time (min.)	1.21	1.83	1.21
RR Response Time (min.)	2.99	3.45	2.99
Event Clearance (min.)	17.96	23.84	17.96
Roadway Clearance (min.)	22.41	29.78	22.41
Incident Clearance (min.)	38.23	37.46	38.23
# of Events w/ RR/SIRV	773	786	773
RR/SIRV Assists	773	786	773
RR/SIRV Activities	834	855	834

Emergency Vehicles

	<u>Current Month</u>	<u>Last Month</u>	<u>YTD</u>
Number of Events	1	2	1
Number of Incidents	0	1	0
TMC Detection (min.)	0.00	0.00	0.00
TMC Verification (min.)	0.00	0.68	0.00
TMC Response (min.)	0.00	0.67	0.00
RR Dispatch Time (min.)	0.00	0.52	0.00
RR Response Time (min.)	0.00	0.15	0.00
Event Clearance (min.)	20.57	9.97	20.57
Roadway Clearance (min.)		3.28	
Incident Clearance (min.)		11.43	
# of Events w/ RR/SIRV	1	2	1
RR/SIRV Assists	1	2	1
RR/SIRV Activities	1	2	1

Other

	<u>Current Month</u>	<u>Last Month</u>	<u>YTD</u>
Number of Events	174	160	174
Number of Incidents	1	1	1
TMC Detection (min.)	0.00	0.00	0.00
TMC Verification (min.)	0.49	0.21	0.49
TMC Response (min.)	22.49	5.97	22.49
RR Dispatch Time (min.)	13.82	1.22	13.82
RR Response Time (min.)	5.32	5.38	5.32
Event Clearance (min.)	30.65	30.08	30.65
Roadway Clearance (min.)	5.98	1.75	5.98
Incident Clearance (min.)	12.12	13.32	12.12
# of Events w/ RR/SIRV	24	28	24
RR/SIRV Assists	24	28	24
RR/SIRV Activities	20	8	20

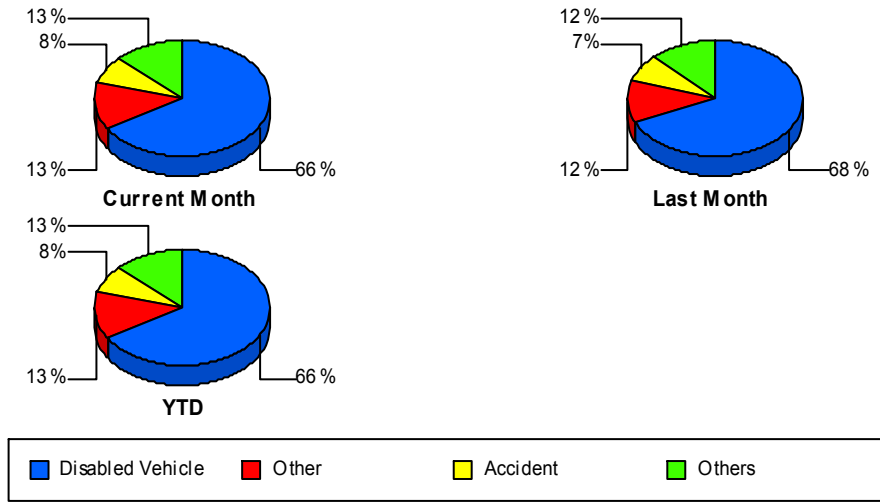
Police Activity

	<u>Current Month</u>	<u>Last Month</u>	<u>YTD</u>
Number of Events	75	76	75
Number of Incidents	3	4	3
TMC Detection (min.)	0.00	0.00	0.00
TMC Verification (min.)	0.00	0.00	0.00
TMC Response (min.)	14.63	2.95	14.63
RR Dispatch Time (min.)	14.58	0.52	14.58
RR Response Time (min.)	0.05	2.55	0.05
Event Clearance (min.)	20.40	16.15	20.40
Roadway Clearance (min.)	86.13	34.42	86.13
Incident Clearance (min.)	113.89	40.25	113.89
# of Events w/ RR/SIRV	3	5	3
RR/SIRV Assists	3	5	3
RR/SIRV Activities	4	4	4

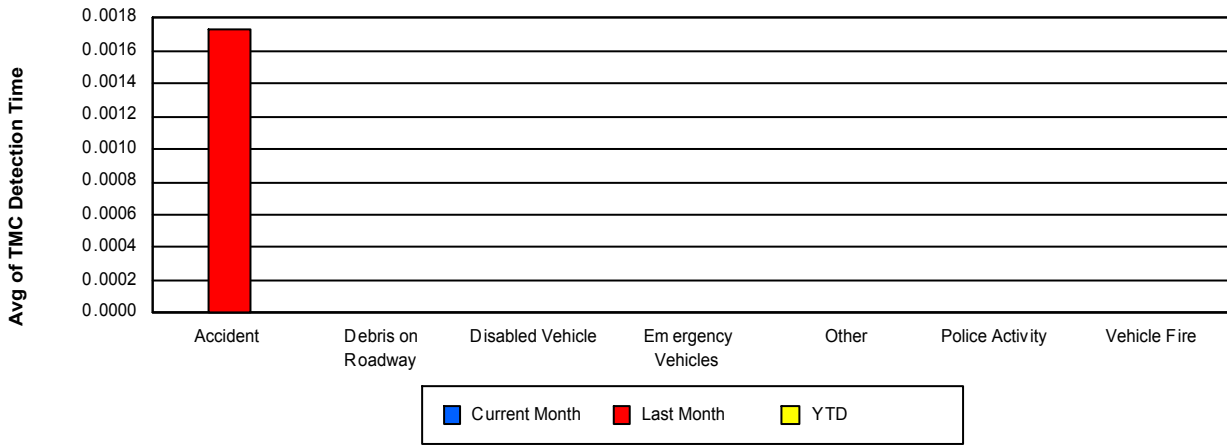
Vehicle Fire

	<u>Current Month</u>	<u>Last Month</u>	<u>YTD</u>
Number of Events	4	4	4
Number of Incidents	3	4	3
TMC Detection (min.)	0.00	0.00	0.00
TMC Verification (min.)	2.39	0.00	2.39
TMC Response (min.)	7.00	4.68	7.00
RR Dispatch Time (min.)	1.82	0.90	1.82
RR Response Time (min.)	5.18	3.79	5.18
Event Clearance (min.)	83.83	38.89	83.83
Roadway Clearance (min.)	47.72	25.49	47.72
Incident Clearance (min.)	105.22	38.89	105.22
# of Events w/ RR/SIRV	3	4	3
RR/SIRV Assists	3	4	3
RR/SIRV Activities	5	6	5

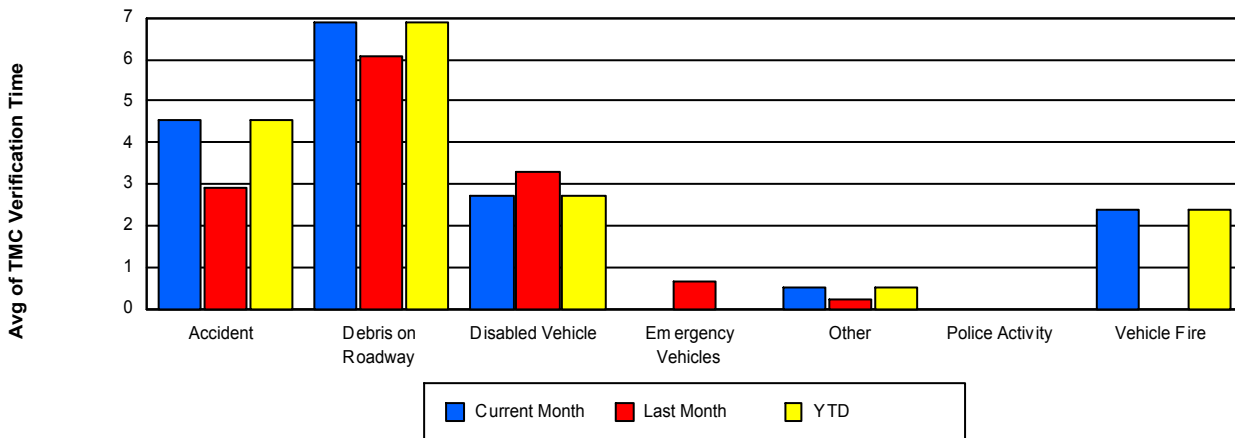
Number of Events / Event Type



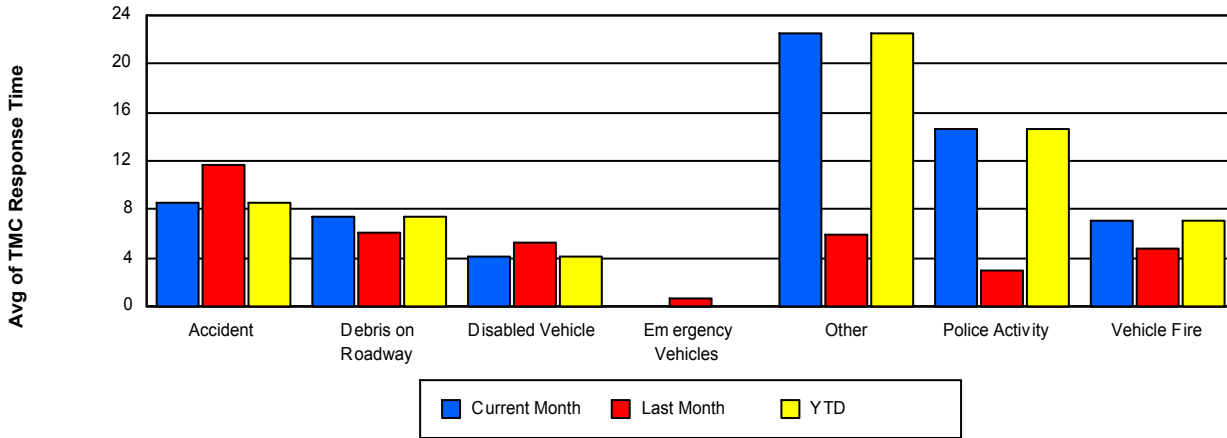
TMC Detection Time



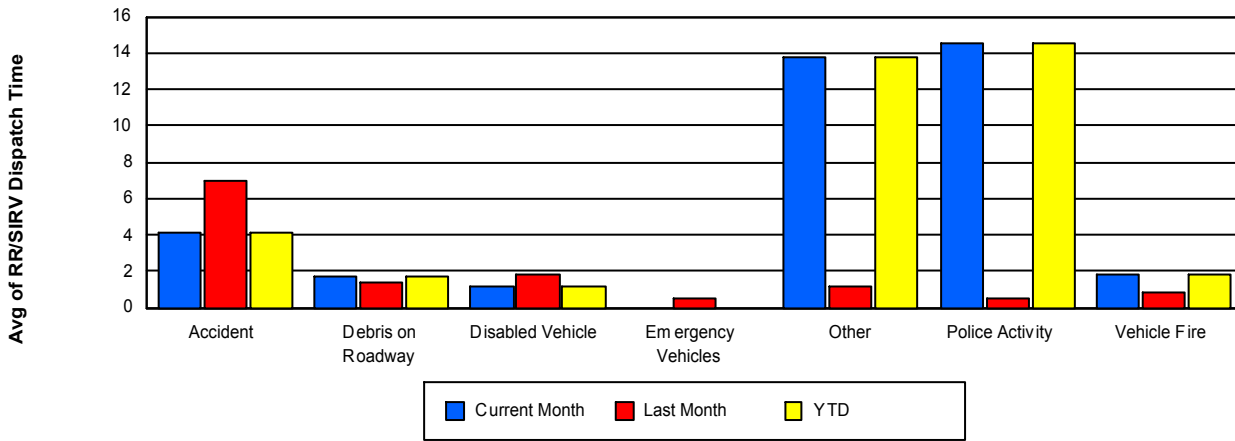
TMC Verification Time



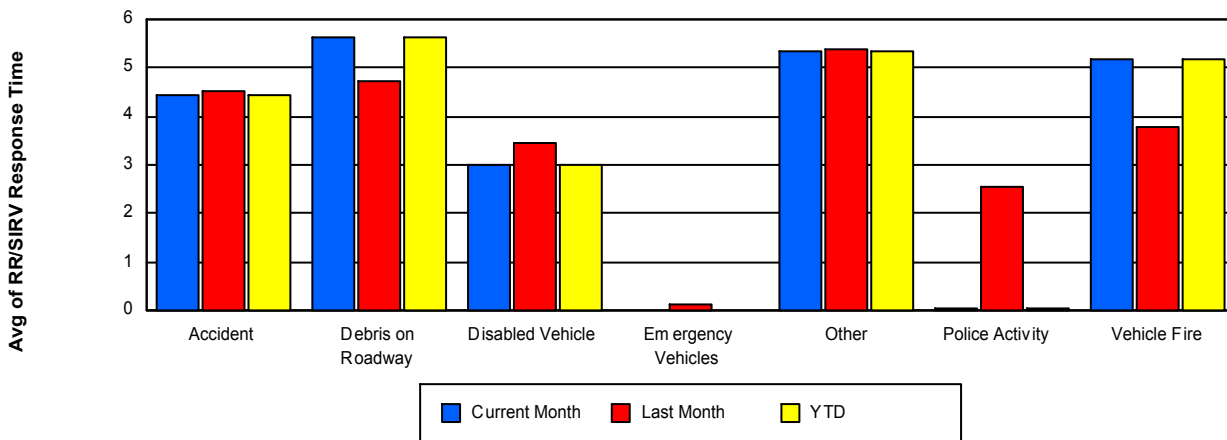
TMC Response Time



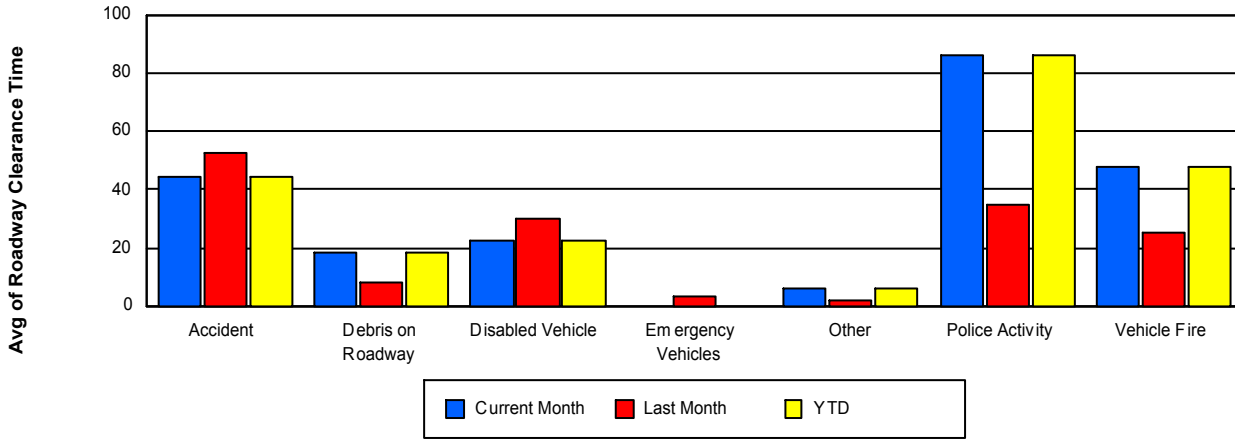
Road Ranger / SIRV Dispatch Time



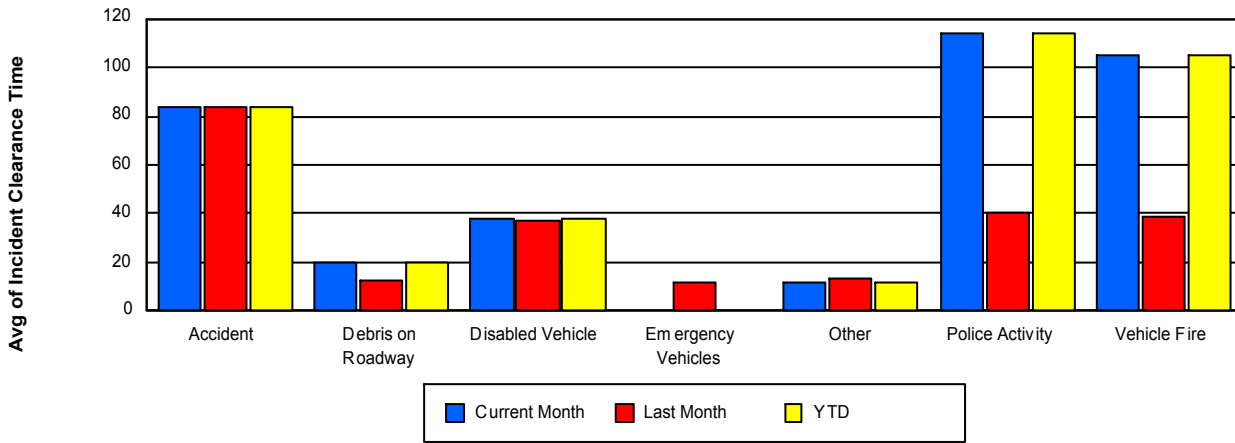
Road Ranger / SIRV Response Time



Roadway Clearance Time (2A)



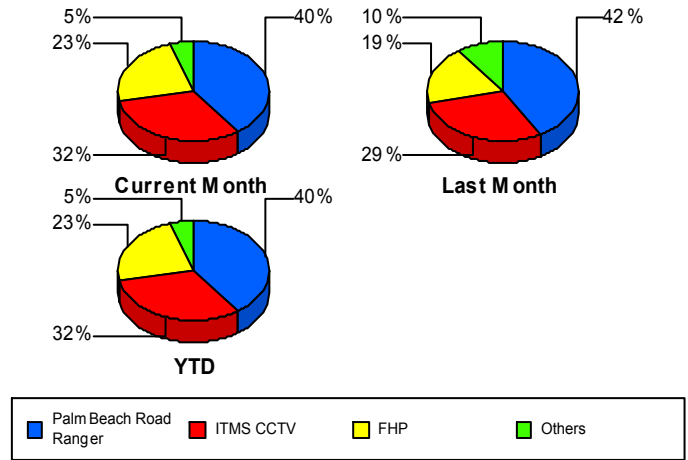
Incident Clearance Time (3B)



Incident Detection Methods

	Current Month	Last Month	YTD
Broward Road Ranger	0	1	0
District 4	2	3	2
FDOT Maintenance	0	2	0
FHP	19	14	19
ITMS CCTV	26	21	26
Motorist	1	0	1
Palm Beach Road Rang	33	30	33
SmarTraveler (511)	1	1	1
Total	82	72	82

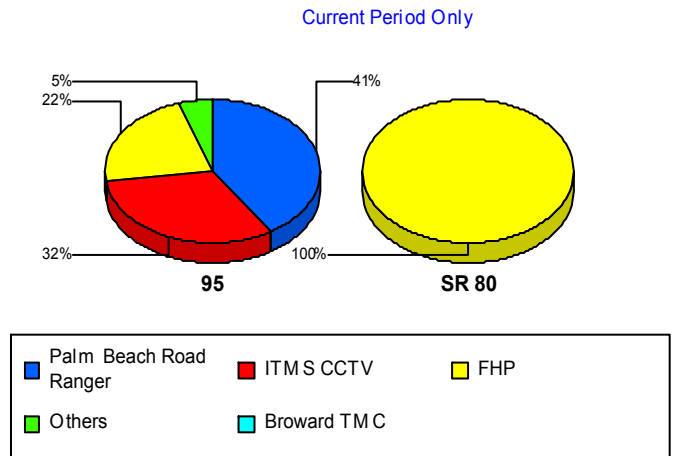
Total Incidents by Detection Method



Incident Detection Methods by Roadway

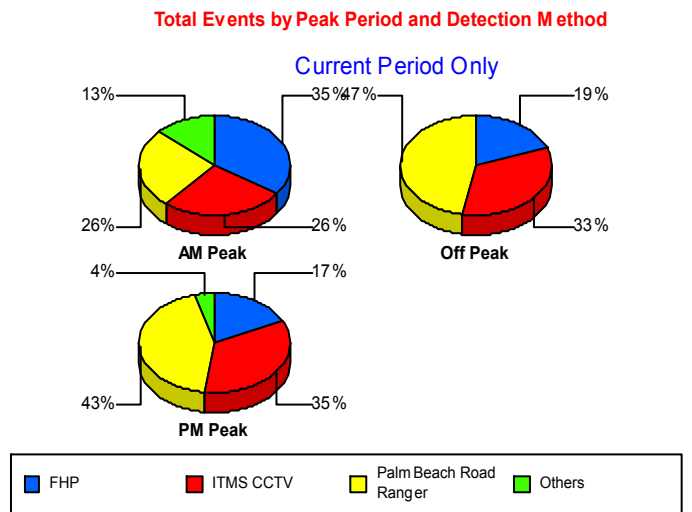
		Current Month	Last Month	YTD
95	Broward Road Ranger	0	1	0
	District 4	2	3	2
	FDOT Maintenance	0	2	0
	FHP	18	14	18
	ITMS CCTV	26	21	26
	Motorist	1	0	1
	Palm Beach Road Rang	33	30	33
	SmarTraveler (511)	1	1	1
	Total	81	72	81
SR 80	FHP	1	0	1
	Total	1	0	1
Total		82	72	82

Total Events by Roadway and Detection Method



Incident Detection Methods by Peak Period

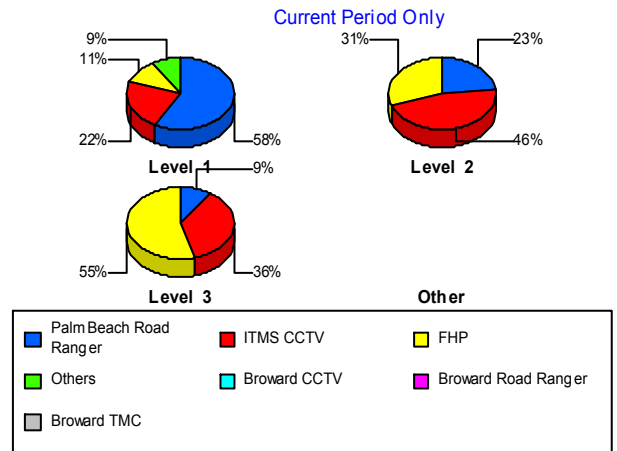
		Current Month	Last Month	YTD
AM Peak	District 4	2	1	2
	FDOT Maintenance	0	1	0
	FHP	8	6	8
	ITMS CCTV	6	3	6
	Palm Beach Road Rang	6	9	6
	SmarTraveler (511)	1	1	1
	Total	23	21	23
Off Peak	District 4	0	2	0
	FDOT Maintenance	0	1	0
	FHP	7	4	7
	ITMS CCTV	12	11	12
	Palm Beach Road Rang	17	13	17
	Total	36	31	36
PM Peak	Broward Road Ranger	0	1	0
	FHP	4	4	4
	ITMS CCTV	8	7	8
	Motorist	1	0	1
	Palm Beach Road Rang	10	8	10
	Total	23	20	23
Total		82	72	82



Incident Detection Methods by Severity

		Current Month	Last Month	YTD
Level 1	Broward Road Ranger	0	1	0
	District 4	2	2	2
	FDOT Maintenance	0	1	0
	FHP	5	10	5
	ITMS CCTV	10	9	10
	Motorist	1	0	1
	Palm Beach Road Rang	26	17	26
	SmarTraveler (511)	1	0	1
	Total	45	40	45
Level 2	District 4	0	1	0
	FHP	8	4	8
	ITMS CCTV	12	9	12
	Palm Beach Road Rang	6	10	6
	SmarTraveler (511)	0	1	0
	Total	26	25	26
Level 3	FDOT Maintenance	0	1	0
	FHP	6	0	6
	ITMS CCTV	4	3	4
	Palm Beach Road Rang	1	3	1
	Total	11	7	11
Total	82	72	82	

Total Events by Severity and Detection Method



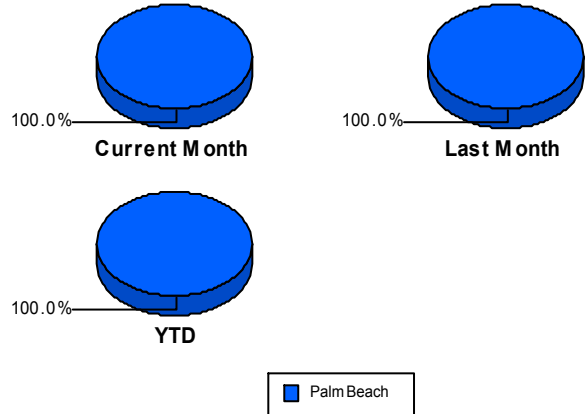
Road Ranger / SIRV Performance Measures

Road Ranger / SIRV Performance By County

RR/SIRV Responses per County

Values presented are: - Total Events with a RR/SIRV Response - Total RR/SIRV Responses, - Total Activities Performed

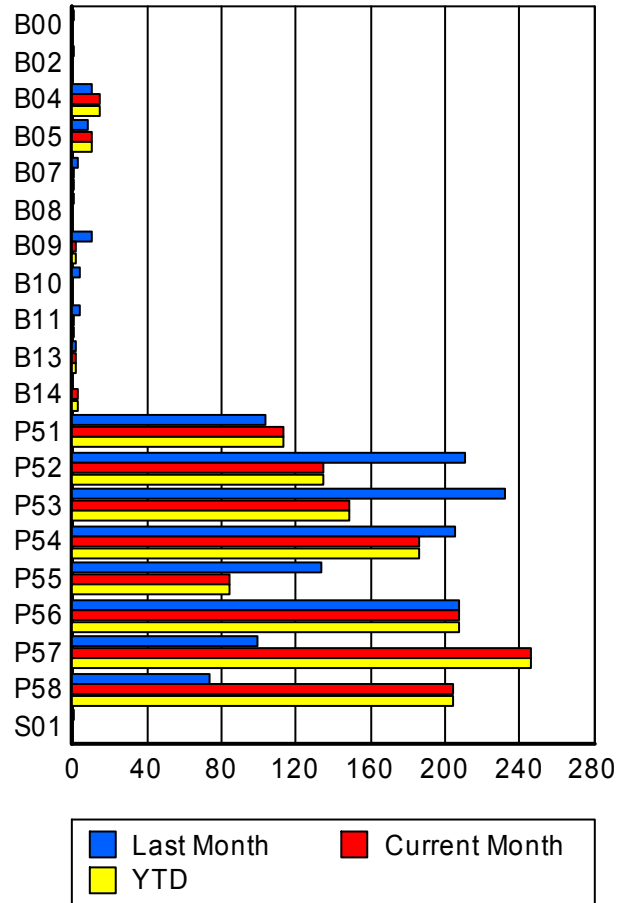
	Current Mo	Last Month	YTD
Palm Beach	1,305	1,270	1,305
	1,357	1,310	1,357
	1,443	1,389	1,443



Road Ranger / SIRV Performance By Truck

	Current Mo	Last Month	YTD
B00	0	1	0
	0	1	0
	0	1	0
B02	0	1	0
	0	1	0
	0	1	0
B04	15	10	15
	15	10	15
	16	10	16
B05	9	8	9
	10	8	10
	10	8	10
B07	1	3	1
	1	3	1
	1	3	1
B08	0	1	0
	0	1	0
	0	1	0
B09	2	10	2
	2	10	2
	2	10	2
B10	0	4	0
	0	4	0
	0	4	0
B11	1	4	1
	1	4	1
	1	4	1

**RR/SIRV
Responses per
Truck**



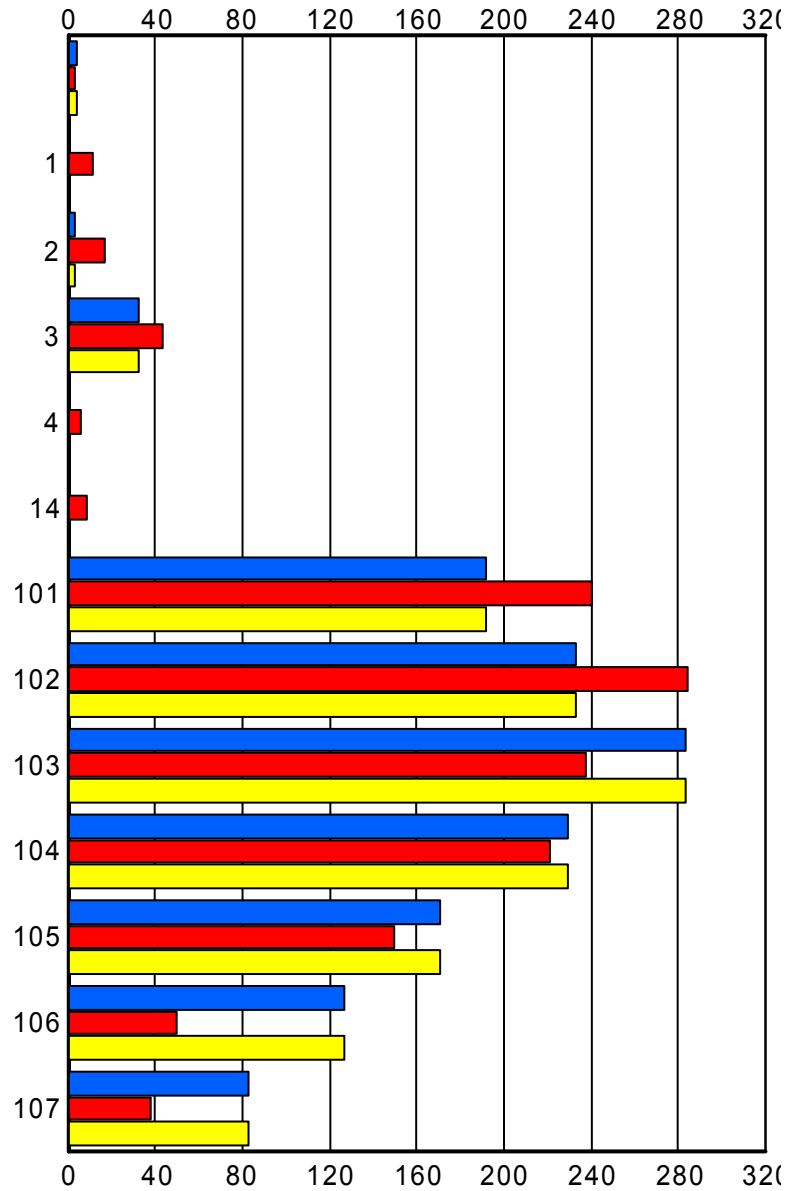
	Current Mo	Last Month	YTD
B13	2	2	2
	2	2	2
	2	2	2
B14	3	0	3
	3	0	3
	3	0	3
P51	112	102	112
	113	103	113
	122	106	122
P52	132	209	132
	135	211	135
	142	225	142
P53	145	229	145
	148	232	148
	157	252	157
P54	183	205	183
	186	205	186
	199	222	199
P55	82	131	82
	84	133	84
	85	140	85
P56	203	205	203
	207	208	207
	221	219	221
P57	245	99	245
	246	99	246
	265	102	265
P58	203	73	203
	204	74	204
	217	78	217
S01	0	1	0
	0	1	0
	0	1	0

Road Ranger / SIRV Performance By Beat

	Current Mo	Last Month	YTD
	4	3	4
	4	3	4
	4	3	4
1	0	11	0
	0	11	0
	0	13	0
2	3	16	3
	3	17	3
	4	17	4
3	31	43	31
	32	43	32
	32	43	32
4	0	6	0
	0	6	0
	0	7	0
14	0	8	0
	0	9	0
	0	14	0
101	190	238	190
	192	240	192
	202	259	202
102	232	282	232
	233	284	233
	246	302	246
103	278	235	278
	283	238	283
	306	248	306
104	225	220	225
	229	221	229
	240	232	240
105	170	149	170
	171	150	171
	182	155	182
106	122	48	122
	127	50	127
	136	57	136
107	83	38	83
	83	38	83
	91	39	91

Values presented are:
 - Total Events with a RR/SIRV Response
 - Total RR/SIRV Responses,
 - Total Activities Performed

RR/SIRV Responses per Beat



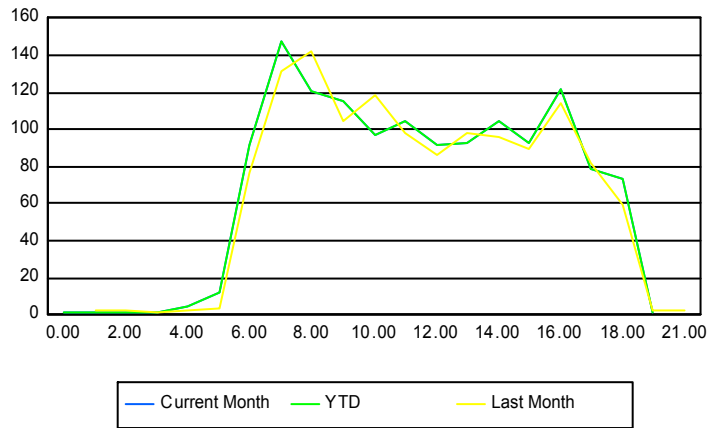
■ Current Month
 ■ Last Month
 ■ YTD

Road Ranger / SIRV Performance By Time of Day

Values presented are:
 - Total Events with a RR/SIRV Response
 - Total RR/SIRV Responses,
 - Total Activities Performed

	Current Mo	Last Month	YTD
12AM-1AM	1	0	1
	1	0	1
	1	0	1
1AM-2AM	1	2	1
	1	2	1
	1	4	1
2AM-3AM	1	2	1
	1	2	1
	1	3	1
3AM-4AM	1	1	1
	1	1	1
	1	1	1
4AM-5AM	2	2	2
	5	2	5
	6	2	6
5AM-6AM	10	4	10
	12	4	12
	12	4	12
6AM-7AM	83	77	83
	92	77	92
	100	80	100
7AM-8AM	141	128	141
	148	131	148
	163	135	163
8AM-9AM	118	132	118
	121	142	121
	127	150	127
9AM-10AM	113	100	113
	115	104	115
	126	111	126
10AM-11AM	92	113	92
	97	118	97
	105	121	105
11AM-12PM	103	95	103
	105	98	105
	115	101	115
12PM-1PM	91	81	91
	92	86	92
	97	94	97

Number of Responses / Hour of the Day



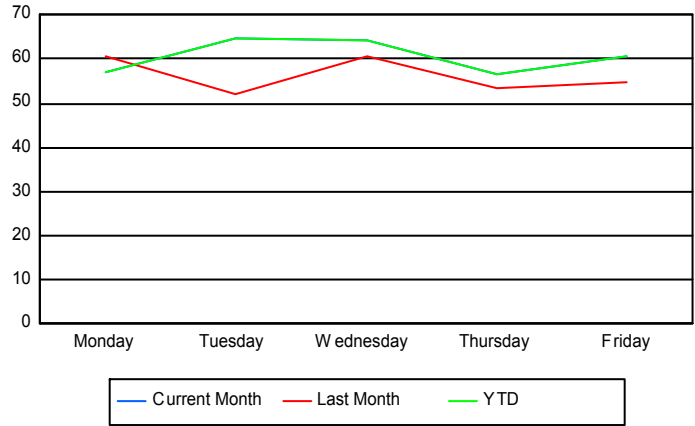
	Current Mo	Last Month	YTD
1PM-2PM	91 93 99	96 98 104	91 93 99
2PM-3PM	103 105 107	92 96 103	103 105 107
3PM-4PM	90 93 95	90 90 95	90 93 95
4PM-5PM	116 122 127	112 114 128	116 122 127
5PM-6PM	75 79 84	81 82 87	75 79 84
6PM-7PM	72 73 75	58 59 62	72 73 75
7PM-8PM	1 1 1	2 2 2	1 1 1
9PM-10PM	0 0 0	2 2 2	0 0 0

Road Ranger / SIRV Performance By Day of Week

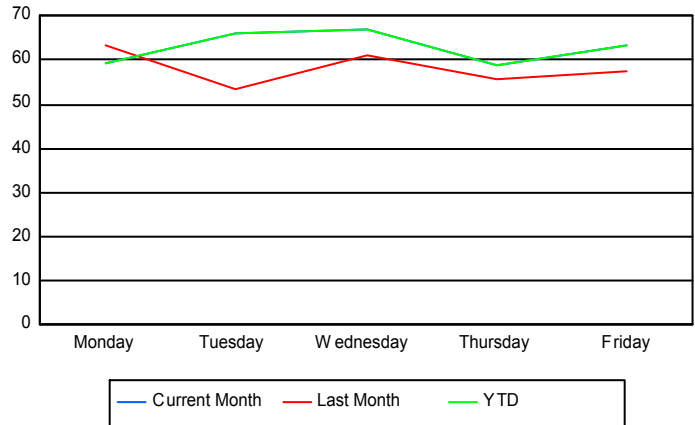
Values presented are:
 - Total Events with a RR/SIRV Response
 - Total RR/SIRV Responses,
 - Total Activities Performed

	Current Mo	Last Month	YTD
Monday	224	298	224
	233	310	233
	250	323	250
Tuesday	254	258	254
	260	264	260
	276	272	276
Wednesday	254	297	254
	265	300	265
	282	325	282
Thursday	272	208	272
	285	217	285
	303	229	303
Friday	301	209	301
	314	219	314
	332	240	332

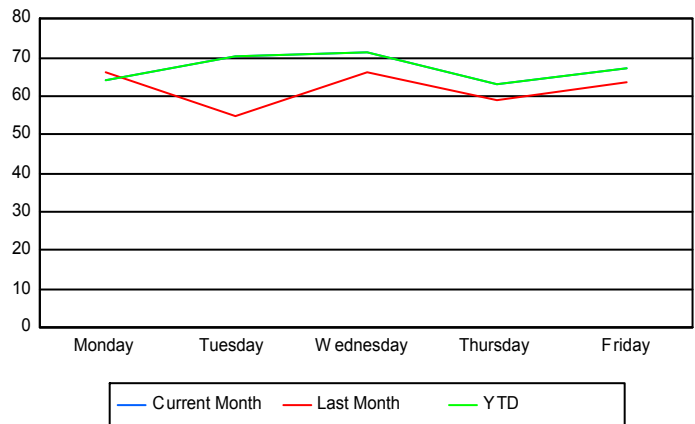
Avg # of events with a RR/SIRV Response per Day of the Week



Avg # of RR/SIRV Responses per Day of the Week



Avg # of RR/SIRV Activities Performed per Day of the Week



Road Ranger/ SIRV Responses per Time of Day and Day of Week

