



Monthly Performance Measures Report Palm Beach County



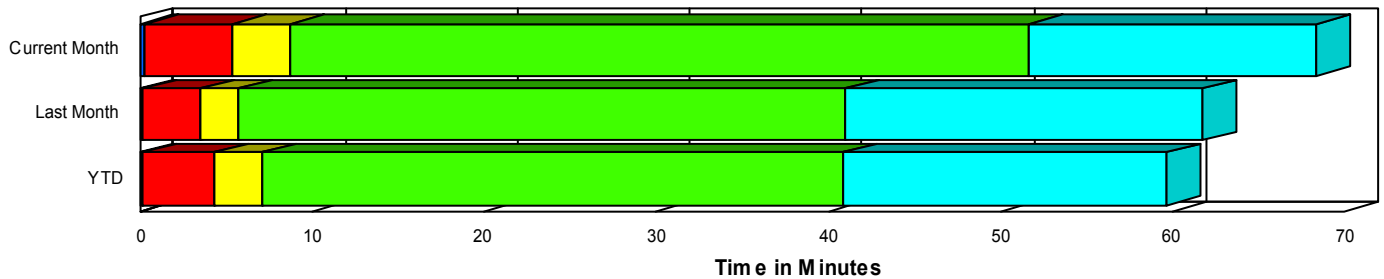
Created on:
May 04, 2008
11:06 pm

Period From Apr 1, 2008 to Apr 30, 2008

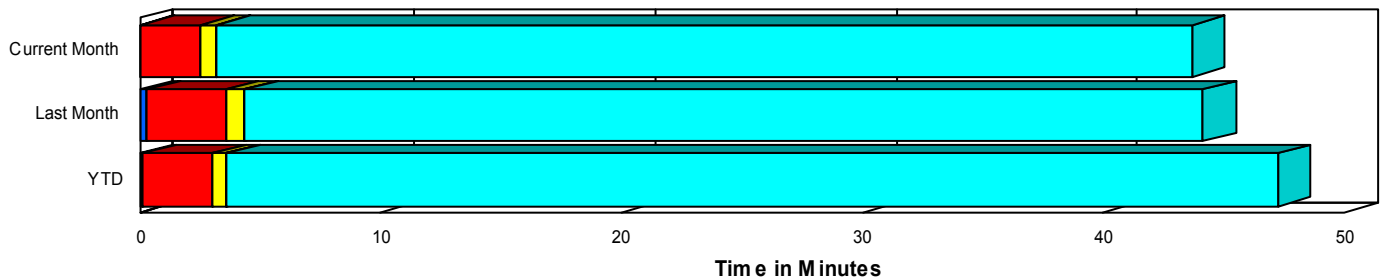
Performance Measures Summary

	Traffic Events (No Lanes Blocked)			Incidents (Lanes Blocked)		
	<u>This Month</u>	<u>Last Month</u>	<u>YTD</u>	<u>This Month</u>	<u>Last Month</u>	<u>YTD</u>
Number of Events	2,619	2,506	10,156	138	283	745
TMC Detection (min.)	0.07	0.29	0.13	0.29	0.20	0.20
TMC Verification (min.)	2.47	3.26	2.90	5.07	3.34	4.15
TMC Response (min.)	3.20	4.21	3.60	8.58	5.89	7.17
RR Dispatch Time (min.)	1.11	1.69	1.25	2.41	2.43	2.23
RR Response Time (min.)	2.15	2.55	2.40	6.18	3.60	5.09
Roadway Clearance (min.)				52.46	40.45	40.18
Event Clearance (min.)	43.75	44.22	47.32	69.08	61.17	58.54
# of Events w/ RR/SIRV	2,529	2,421	9,747	136	239	676
RR/SIRV Responses	2,529	2,421	9,854	136	239	753
RR/SIRV Activities	2,775	2,671	10,642	212	316	957

Incident Clearance TimeLine



Traffic Event(Non-Lane Blockage) Time-Line



<ul style="list-style-type: none"> ■ Avg. TMC Detection Time ■ Avg. Time from TMC Detection to TMC Verification ■ Avg. Time from TMC Verification to TMC Response 	<ul style="list-style-type: none"> ■ Avg. Time from TMC Response to Roadway Clearance* ■ Avg. Time from Roadway Clearance to Incident/Event Clearance**
---	--

* Roadway clearance equals all travel lanes open

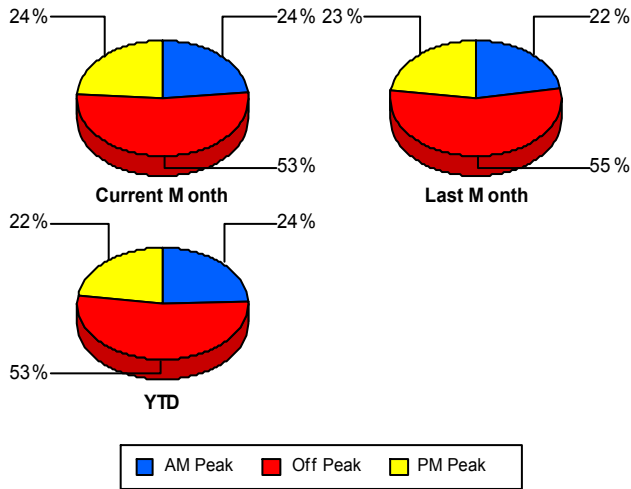
** Incident clearance equals time when last responder has left the scene

Performance Measures by Peak Period

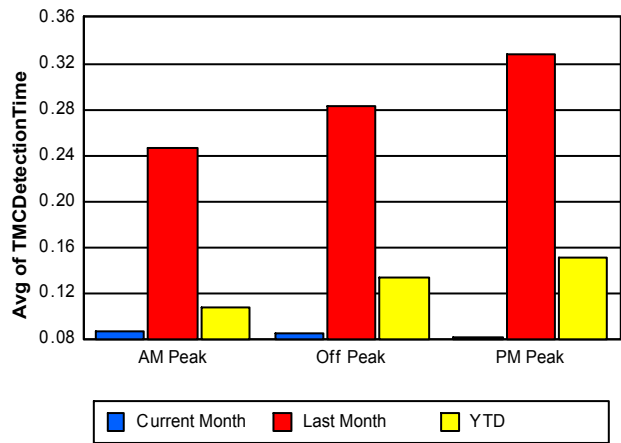
Note: AM peak period is defined as 6am to 10am and PM peak period is defined as 3pm to 7pm.

	AM Peak			Off Peak			PM Peak		
	<u>Current Month</u>	<u>Last Month</u>	<u>YTD</u>	<u>Current Month</u>	<u>Last Month</u>	<u>YTD</u>	<u>Current Month</u>	<u>Last Month</u>	<u>YTD</u>
Number of Events	648	623	2,629	1,451	1,525	5,825	658	641	2,447
Number of Incidents	35	70	195	83	156	399	20	57	151
TMC Detection (min.)	0.09	0.25	0.11	0.09	0.28	0.13	0.08	0.33	0.15
TMC Verification (min.)	1.90	3.07	2.38	2.96	3.67	3.29	2.49	2.53	2.90
TMC Response (min.)	2.65	4.53	3.19	4.22	4.75	4.25	2.66	3.31	3.53
RR Dispatch Time (min.)	1.03	2.02	1.32	1.52	1.79	1.38	0.55	1.42	1.15
RR Response Time (min.)	1.78	2.55	1.94	2.70	2.98	2.90	2.17	1.94	2.47
Event Clearance (min.)	42.76	50.17	47.92	43.10	51.24	52.21	51.46	29.20	38.48
Roadway Clearance (min.)	41.82	34.03	31.54	60.40	45.75	45.88	38.17	33.86	36.28
Incident Clearance (min.)	59.06	57.93	53.66	75.47	65.18	63.53	60.08	54.19	51.67
# of Events w/ RR/SIRV	623	585	2,500	1,403	1,450	5,551	639	625	2,372
RR/SIRV Responses	623	585	2,545	1,403	1,450	5,654	639	625	2,408
RR/SIRV Activities	692	637	2,758	1,591	1,664	6,261	704	686	2,580

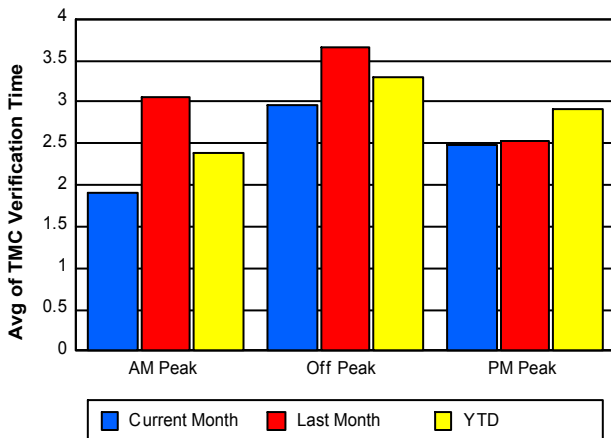
Number of Events / Peak Period



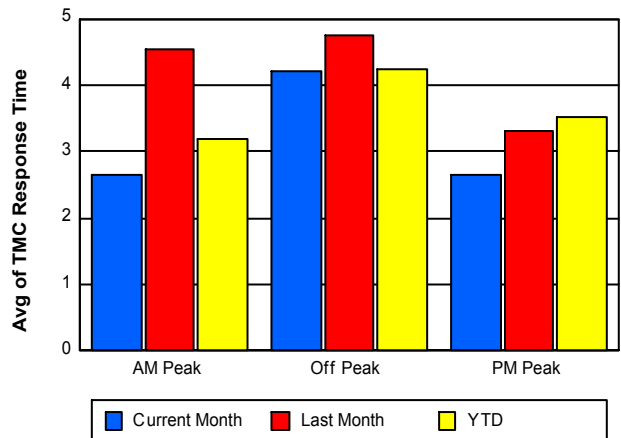
TMC Detection Time



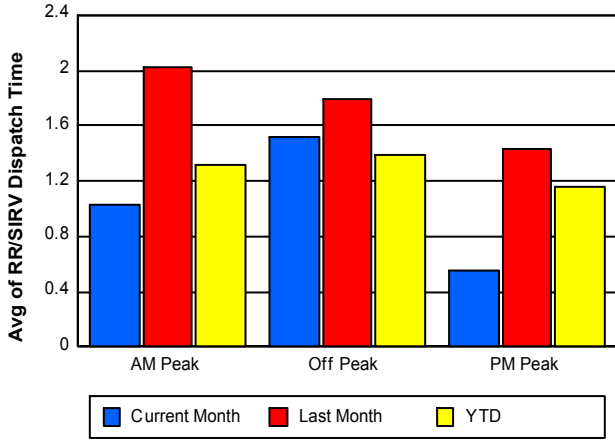
TMC Verification Time



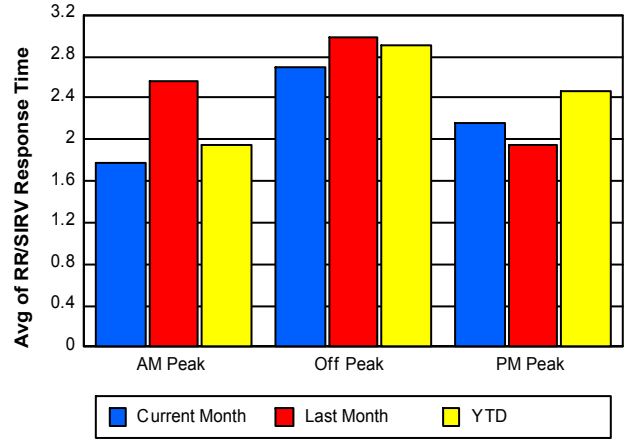
TMC Response Time



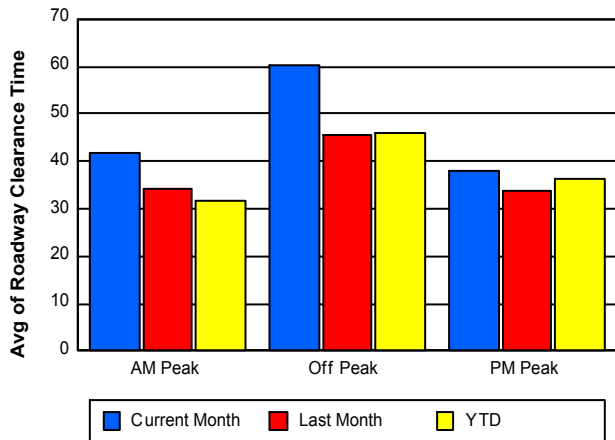
Road Ranger / SIRV Dispatch Time



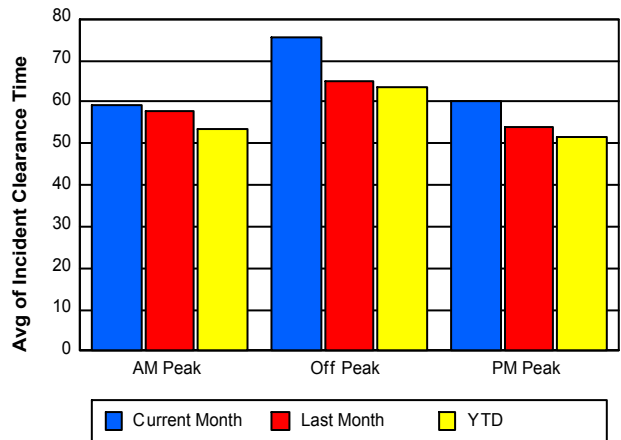
Road Ranger / SIRV Response Time



Roadway Clearance Time (2A)



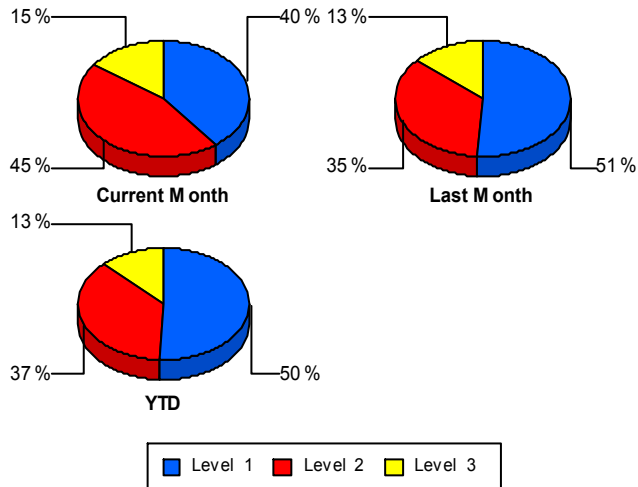
Incident Clearance Time (3B)



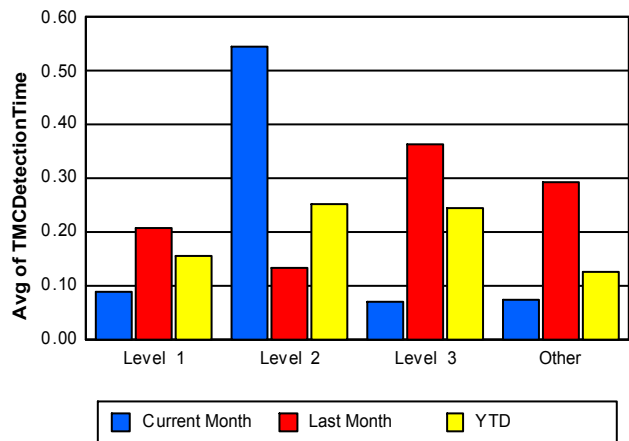
Performance Measures by Severity

	Level 1			Level 2			Level 3			Other		
	<u>This Month</u>	<u>Last Month</u>	<u>YTD</u>	<u>This Month</u>	<u>Last Month</u>	<u>YTD</u>	<u>This Month</u>	<u>Last Month</u>	<u>YTD</u>	<u>This Month</u>	<u>Last Month</u>	<u>YTD</u>
Number of Events	55	145	376	62	100	275	21	38	94	2,619	2,506	10,156
Number of Incidents	55	145	376	62	100	275	21	38	94	0	0	0
TMC Detection (min.)	0.09	0.21	0.15	0.54	0.13	0.25	0.07	0.36	0.24	0.07	0.29	0.13
TMC Verification (min.)	1.68	1.54	2.09	7.38	5.84	6.83	7.12	3.62	4.54	2.47	3.26	2.90
TMC Response (min.)	6.48	3.37	4.27	9.75	8.08	9.59	10.70	9.04	11.05	3.20	4.21	3.60
RR Dispatch Time (min.)	1.41	1.98	1.50	2.15	2.96	2.38	5.96	2.62	4.65	1.11	1.69	1.25
RR Resp. Time (min.)	5.10	1.68	2.88	7.60	5.12	7.21	4.74	6.42	7.24	2.15	2.55	2.40
Event Clearance (min.)	31.90	36.81	33.48	73.31	74.92	70.67	153.97	117.98	123.34	43.75	44.22	47.32
Roadway Clear. (min.)	12.18	13.65	12.94	57.76	57.28	55.91	142.32	98.44	103.13			
Incident Clearance (min.)	31.90	36.81	33.48	73.31	74.92	70.67	153.97	117.98	123.34			
# of Events w/ RR/SIRV	55	119	333	61	89	260	20	31	83	2,529	2,421	9,747
RR/SIRV Responses	55	119	353	61	89	288	20	31	112	2,529	2,421	9,854
RR/SIRV Activities	66	140	405	97	124	385	49	52	167	2,775	2,671	10,642

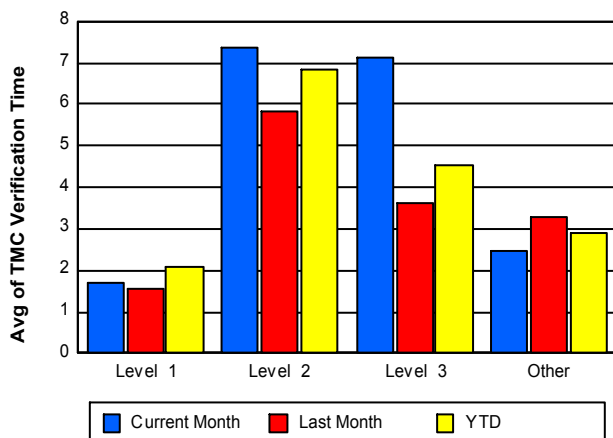
Number of Events / Severity



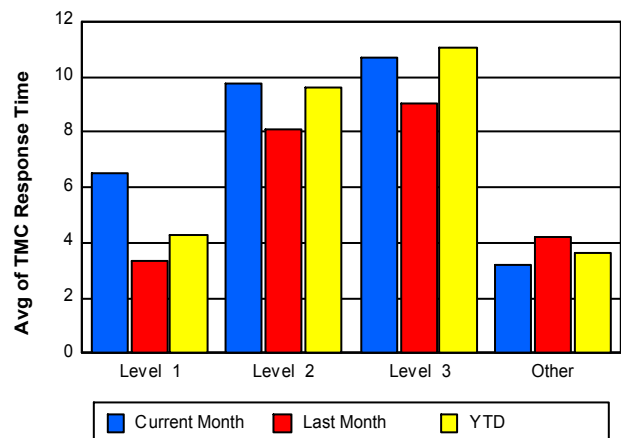
TMC Detection Time



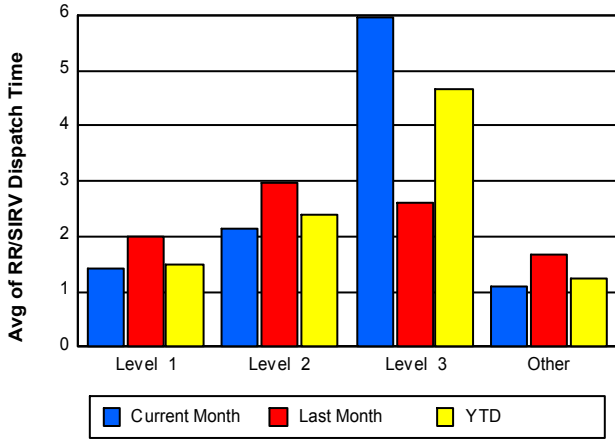
TMC Verification Time



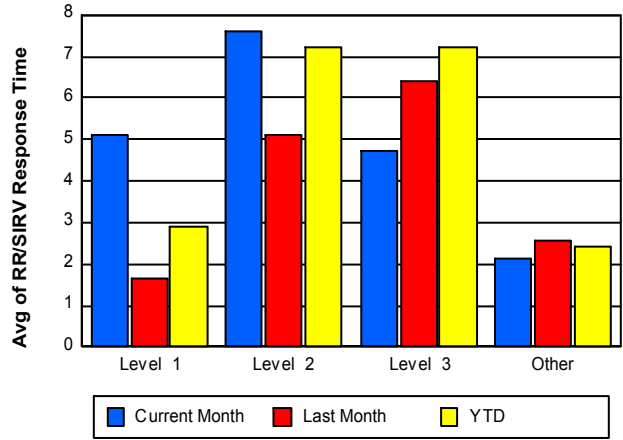
TMC Response Time



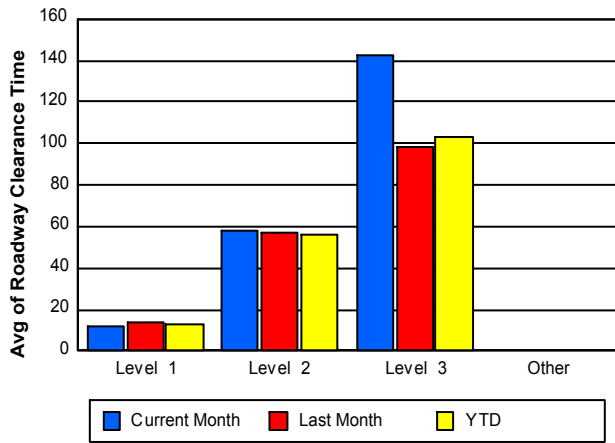
Road Ranger / SIRV Dispatch Time



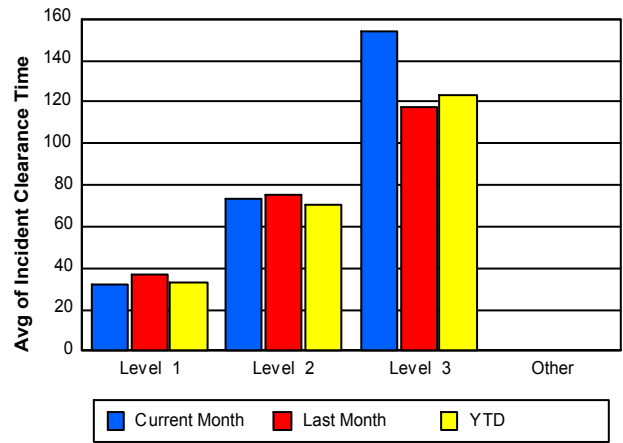
Road Ranger / SIRV Response Time



Roadway Clearance Time (2A)



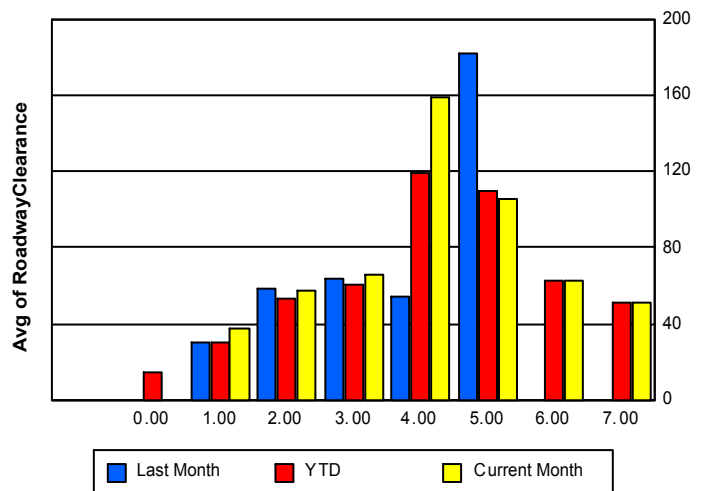
Incident Clearance Time (3B)



Roadway Clearance by Maximum Number of Lanes Blocked

	Current Month	Last Month	YTD
	0.00		
0			14.70
1	37.68	29.65	30.47
2	57.59	58.12	52.90
3	65.84	63.49	60.52
4	159.10	54.62	119.45
5	105.91	181.77	109.25
6	62.63	0.00	62.63

Roadway Clearance Time(2A)



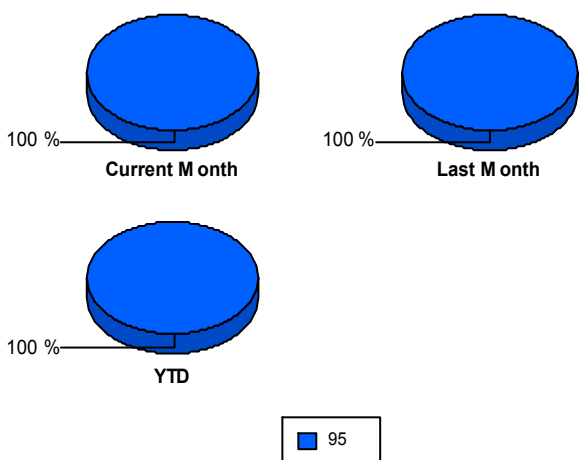
	Current Month	Last Month	YTD
7	51.40	0.00	51.40

Performance Measures by Roadway

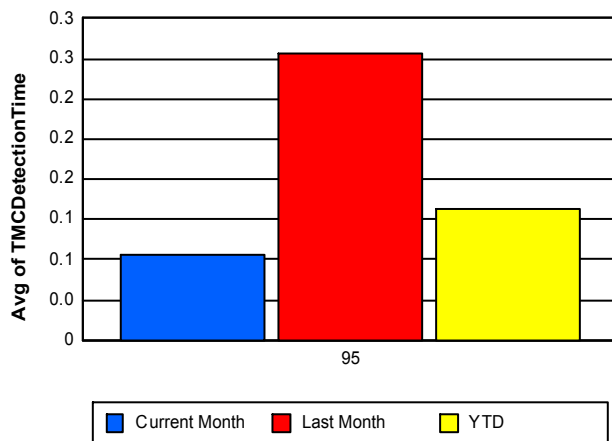
95

	<u>Current Month</u>	<u>Last Month</u>	<u>YTD</u>
Number of Events	2,757	2,789	10,901
Number of Incidents	138	283	745
TMC Detection (min.)	0.08	0.28	0.13
TMC Verification (min.)	2.60	3.27	2.98
TMC Response (min.)	3.47	4.36	3.83
RR Dispatch Time (min.)	1.18	1.75	1.32
RR Resp. Time (min.)	2.36	2.65	2.57
Event Clearance (min.)	45.02	45.94	48.09
Roadway Clear. (min.)	52.46	40.45	40.18
Incident Clearance (min.)	69.08	61.17	58.54
# of Events w/ RR/SIRV	2,665	2,660	10,423
RR/SIRV Responses	2,665	2,660	10,607
RR/SIRV Activities	2,987	2,987	11,599

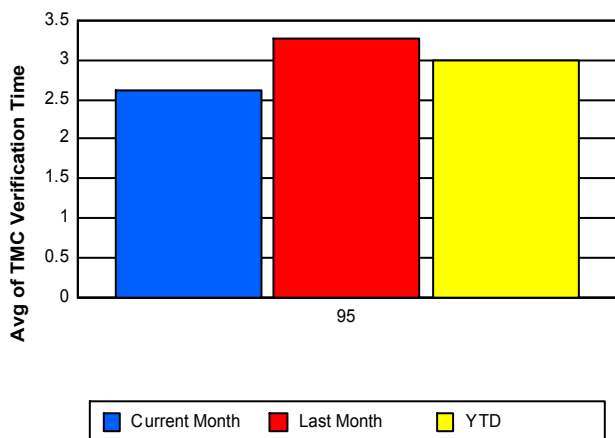
Number of Events / Roadway



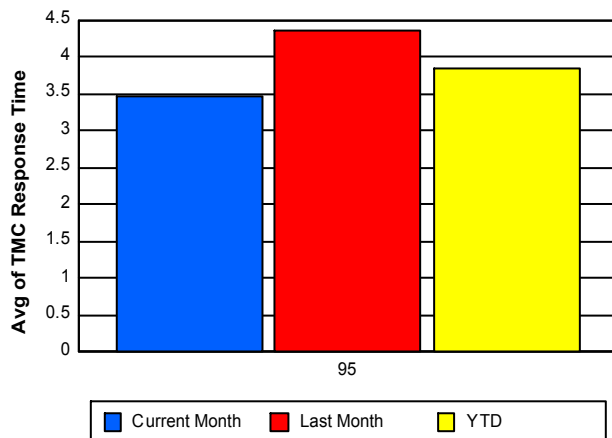
TMC Detection Time



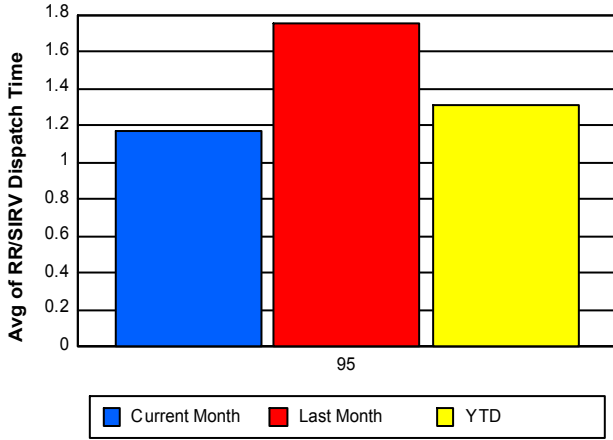
TMC Verification Time



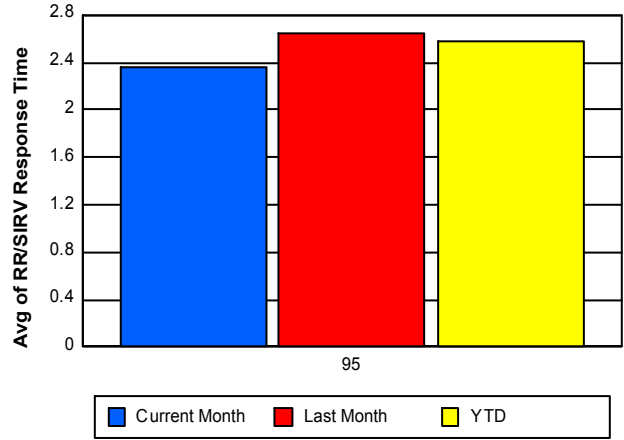
TMC Response Time



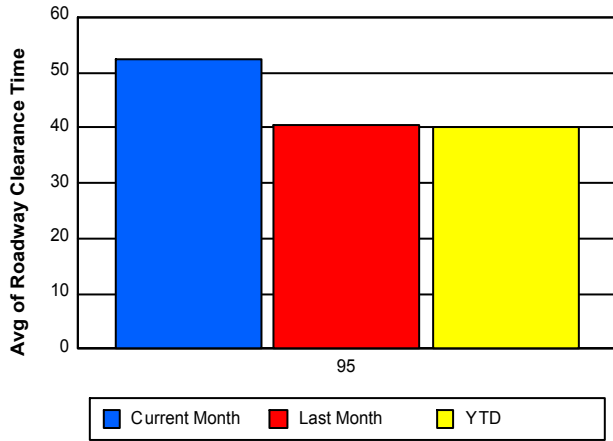
Road Ranger / SIRV Dispatch Time



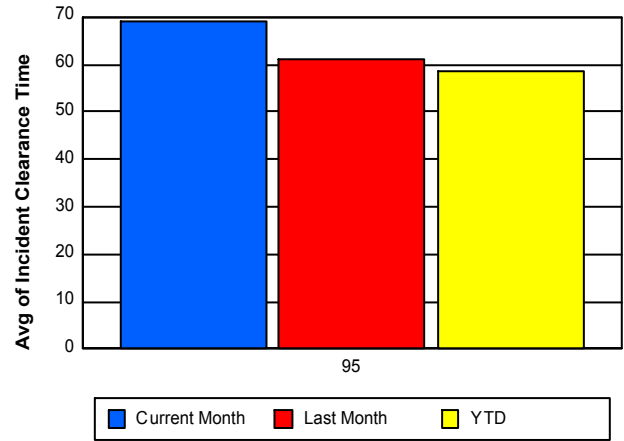
Road Ranger / SIRV Response Time



Roadway Clearance Time (2A)



Incident Clearance Time (3B)



Performance Measures by Event Type

Abandoned Vehicle

	<u>Current Month</u>	<u>Last Month</u>	<u>YTD</u>
Number of Events	455	475	1,919
Number of Incidents	1	4	7
TMC Detection (min.)	0.07	0.30	0.11
TMC Verification (min.)	0.50	1.22	0.69
TMC Response (min.)	3.40	1.91	1.78
RR Dispatch Time (min.)	2.78	0.93	1.16
RR Response Time (min.)	0.77	0.99	0.71
Event Clearance (min.)	173.02	151.43	174.25
Roadway Clearance (min.)	2.57	42.39	29.82
Incident Clearance (min.)	9.28	46.95	34.43
# of Events w/ RR/SIRV	389	412	1,608
RR/SIRV Assists	389	412	1,623
RR/SIRV Activities	398	433	1,679

Accident

	<u>Current Month</u>	<u>Last Month</u>	<u>YTD</u>
Number of Events	190	310	963
Number of Incidents	90	184	494
TMC Detection (min.)	0.20	0.28	0.22
TMC Verification (min.)	4.51	4.38	5.13
TMC Response (min.)	7.18	6.54	7.24
RR Dispatch Time (min.)	2.11	2.29	2.05
RR Response Time (min.)	5.08	4.36	5.34
Event Clearance (min.)	65.68	61.80	59.83
Roadway Clearance (min.)	62.31	46.89	46.09
Incident Clearance (min.)	82.99	72.61	69.68
# of Events w/ RR/SIRV	184	282	911
RR/SIRV Assists	184	282	990
RR/SIRV Activities	258	369	1,201

Congestion

	<u>Current Month</u>	<u>Last Month</u>	<u>YTD</u>
Number of Events	2	6	21
Number of Incidents	0	0	0
TMC Detection (min.)	0.00	0.00	0.01
TMC Verification (min.)	0.00	0.00	0.38
TMC Response (min.)		18.05	12.99
RR Dispatch Time (min.)		1.63	3.14
RR Response Time (min.)		15.62	11.26
Event Clearance (min.)	61.20	35.11	40.23
Roadway Clearance (min.)			
Incident Clearance (min.)			
# of Events w/ RR/SIRV	0	2	4
RR/SIRV Assists	0	2	4
RR/SIRV Activities	0	2	4

Debris on Roadway

	<u>Current Month</u>	<u>Last Month</u>	<u>YTD</u>
Number of Events	138	115	478
Number of Incidents	13	13	54
TMC Detection (min.)	0.08	0.31	0.19
TMC Verification (min.)	7.94	7.21	7.39
TMC Response (min.)	8.43	7.93	7.97
RR Dispatch Time (min.)	1.63	2.66	1.79
RR Response Time (min.)	6.79	5.27	6.19
Event Clearance (min.)	13.11	11.73	13.46
Roadway Clearance (min.)	16.80	13.20	16.11
Incident Clearance (min.)	25.04	15.33	20.95
# of Events w/ RR/SIRV	138	110	468
RR/SIRV Assists	138	110	479
RR/SIRV Activities	155	116	511

Disabled Vehicle

	<u>Current Month</u>	<u>Last Month</u>	<u>YTD</u>
Number of Events	1,926	1,817	7,313
Number of Incidents	29	55	144
TMC Detection (min.)	0.07	0.28	0.12
TMC Verification (min.)	2.23	3.41	2.94
TMC Response (min.)	2.44	4.30	3.45
RR Dispatch Time (min.)	0.65	1.77	1.18
RR Response Time (min.)	1.84	2.56	2.30
Event Clearance (min.)	15.20	18.05	16.14
Roadway Clearance (min.)	37.01	23.35	25.62
Incident Clearance (min.)	47.00	33.91	33.34
# of Events w/ RR/SIRV	1,910	1,796	7,246
RR/SIRV Assists	1,910	1,796	7,313
RR/SIRV Activities	2,129	2,003	7,991

Emergency Vehicles

	<u>Current Month</u>	<u>Last Month</u>	<u>YTD</u>
Number of Events	1	3	5
Number of Incidents	1	2	3
TMC Detection (min.)	18.47	0.24	4.01
TMC Verification (min.)	18.47	0.24	4.48
TMC Response (min.)	0.07	-0.23	0.51
RR Dispatch Time (min.)	0.07	-0.24	0.24
RR Response Time (min.)	0.00	0.01	0.27
Event Clearance (min.)	77.67	14.23	29.42
Roadway Clearance (min.)	70.73	9.12	29.66
Incident Clearance (min.)	77.67	18.47	38.21
# of Events w/ RR/SIRV	1	3	5
RR/SIRV Assists	1	3	5
RR/SIRV Activities	1	3	5

Other

	<u>Current Month</u>	<u>Last Month</u>	<u>YTD</u>
Number of Events	31	23	91
Number of Incidents	1	4	6
TMC Detection (min.)	0.07	0.12	0.08
TMC Verification (min.)	22.47	4.11	10.62
TMC Response (min.)	23.42	10.29	15.75
RR Dispatch Time (min.)	4.98	3.53	3.78
RR Response Time (min.)	18.34	6.77	11.73
Event Clearance (min.)	35.06	24.13	28.68
Roadway Clearance (min.)	14.95	7.47	17.47
Incident Clearance (min.)	17.48	10.82	20.49
# of Events w/ RR/SIRV	29	22	79
RR/SIRV Assists	29	22	81
RR/SIRV Activities	29	26	87

Pedestrian

	<u>YTD</u>
Number of Events	32
Number of Incidents	0
TMC Detection (min.)	0.04
TMC Verification (min.)	1.39
TMC Response (min.)	1.38
RR Dispatch Time (min.)	0.27
RR Response Time (min.)	1.11
Event Clearance (min.)	15.13
Roadway Clearance (min.)	
Incident Clearance (min.)	
# of Events w/ RR/SIRV	32
RR/SIRV Assists	32
RR/SIRV Activities	33

Police Activity

	<u>Current Month</u>	<u>Last Month</u>	<u>YTD</u>
Number of Events	3	22	39
Number of Incidents	2	19	31
TMC Detection (min.)	0.00	0.44	0.31
TMC Verification (min.)	0.00	1.58	1.33
TMC Response (min.)	14.87	5.03	9.24
RR Dispatch Time (min.)	12.16	3.36	5.79
RR Response Time (min.)	2.71	1.67	3.45
Event Clearance (min.)	68.22	57.84	55.26
Roadway Clearance (min.)	95.94	41.64	46.62
Incident Clearance (min.)	100.25	65.85	66.47
# of Events w/ RR/SIRV	3	16	31
RR/SIRV Assists	3	16	37
RR/SIRV Activities	5	16	42

Vehicle Fire

	<u>Current Month</u>	<u>YTD</u>
Number of Events	2	2
Number of Incidents	0	0
TMC Detection (min.)	0.00	0.00
TMC Verification (min.)	9.12	9.12
TMC Response (min.)	9.14	9.14
RR Dispatch Time (min.)	0.93	0.93
RR Response Time (min.)	8.21	8.21
Event Clearance (min.)	34.21	34.21
Roadway Clearance (min.)		
Incident Clearance (min.)		
# of Events w/ RR/SIRV	2	2
RR/SIRV Assists	2	2
RR/SIRV Activities	2	2

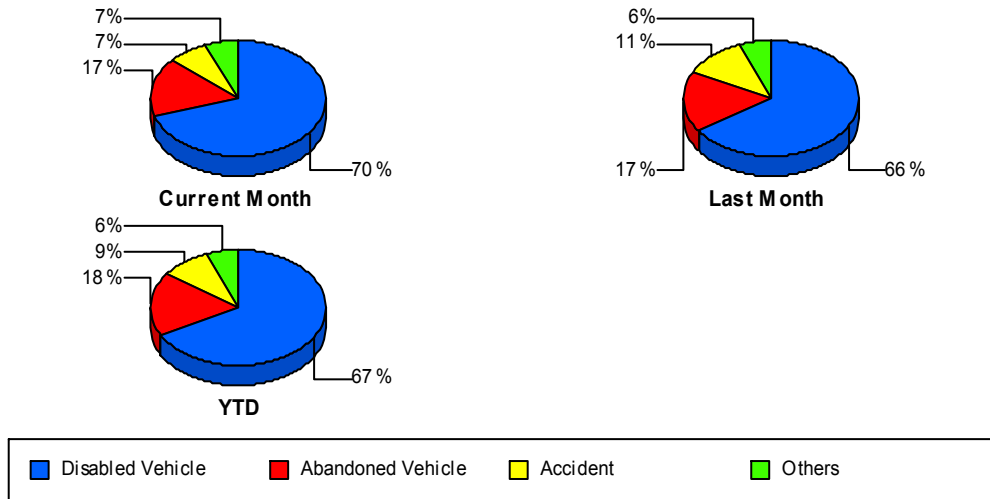
Visibility

	<u>Current Month</u>	<u>YTD</u>
Number of Events	1	3
Number of Incidents	0	2
TMC Detection (min.)	0.00	0.00
TMC Verification (min.)	0.00	0.00
TMC Response (min.)	49.05	17.12
RR Dispatch Time (min.)	1.57	1.28
RR Response Time (min.)	47.48	15.83
Event Clearance (min.)	49.48	45.16
Roadway Clearance (min.)		40.23
Incident Clearance (min.)		43.00
# of Events w/ RR/SIRV	1	3
RR/SIRV Assists	1	3
RR/SIRV Activities	1	3

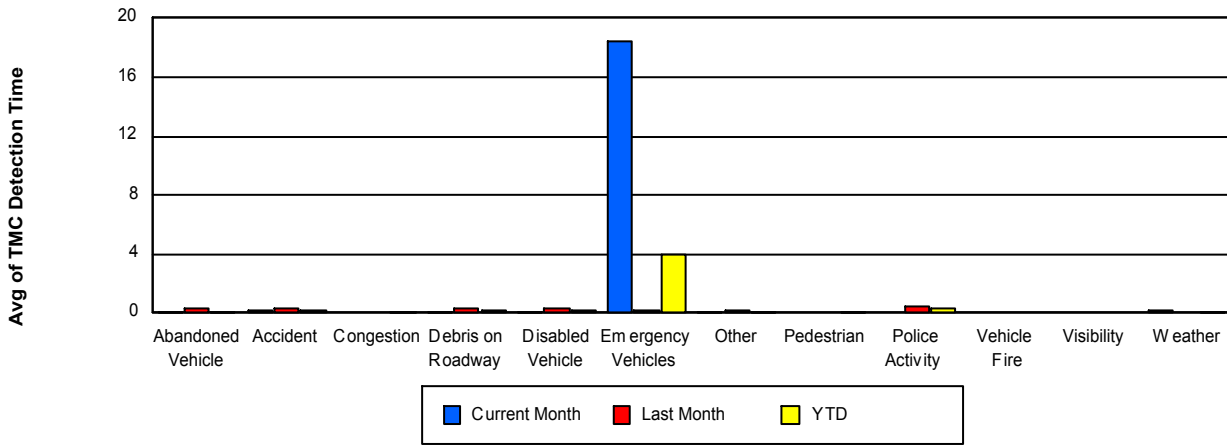
Weather

	<u>Current Month</u>	<u>Last Month</u>	<u>YTD</u>
Number of Events	1	3	6
Number of Incidents	1	2	4
TMC Detection (min.)	0.13	0.00	0.11
TMC Verification (min.)	0.13	6.89	9.74
TMC Response (min.)	2.85	10.84	12.32
RR Dispatch Time (min.)	1.77	5.28	3.52
RR Response Time (min.)	1.08	5.56	8.80
Event Clearance (min.)	70.68	173.72	137.06
Roadway Clearance (min.)	60.20	177.49	170.23
Incident Clearance (min.)	70.68	184.59	159.05
# of Events w/ RR/SIRV	1	2	5
RR/SIRV Assists	1	2	9
RR/SIRV Activities	2	3	11

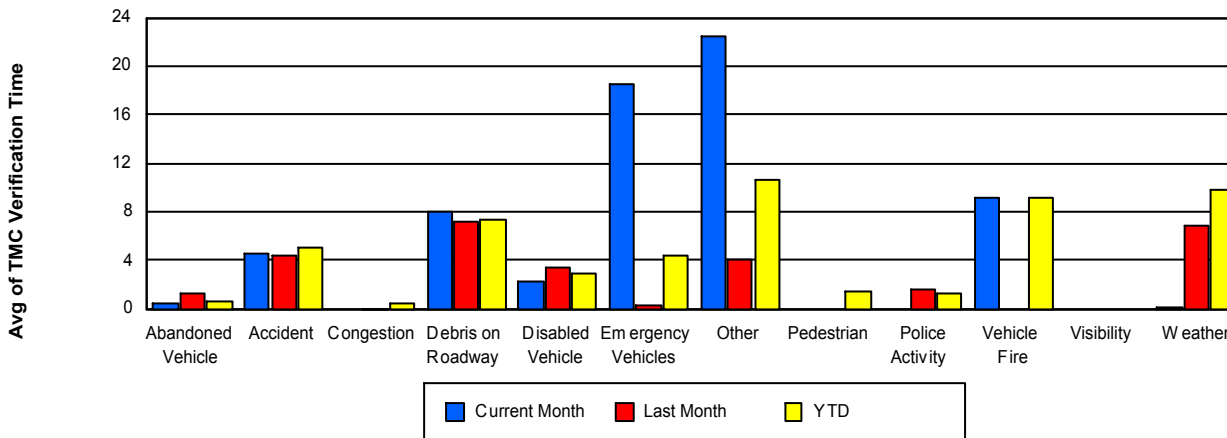
Number of Events / Event Type



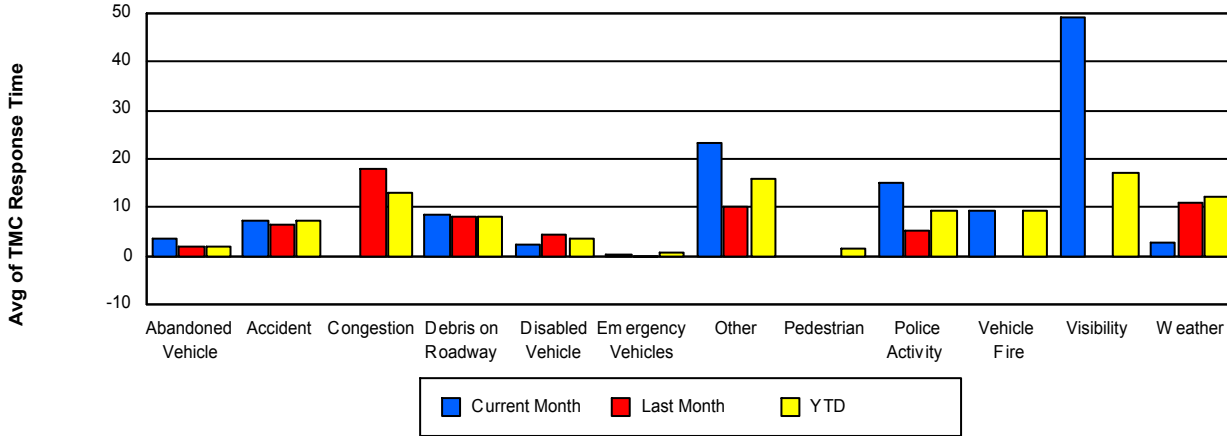
TMC Detection Time



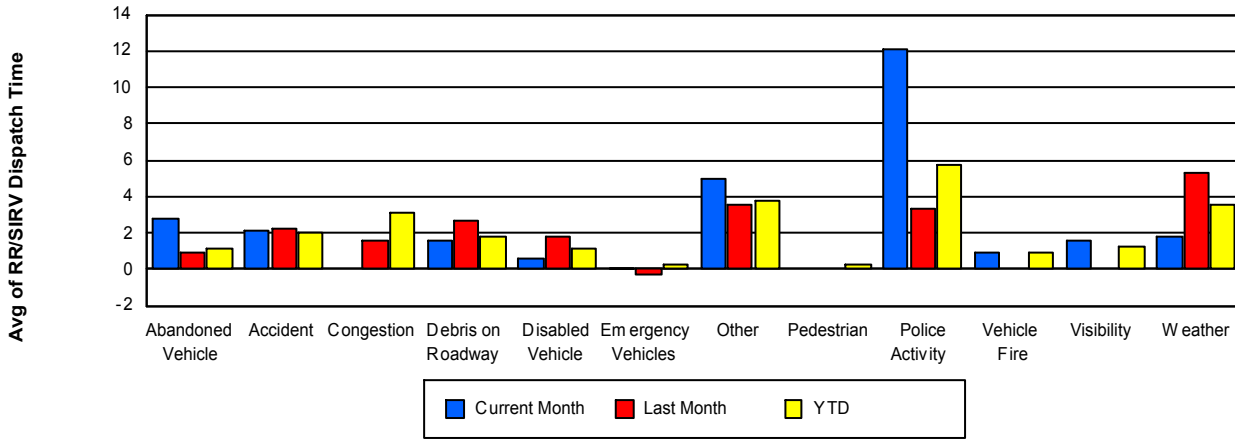
TMC Verification Time



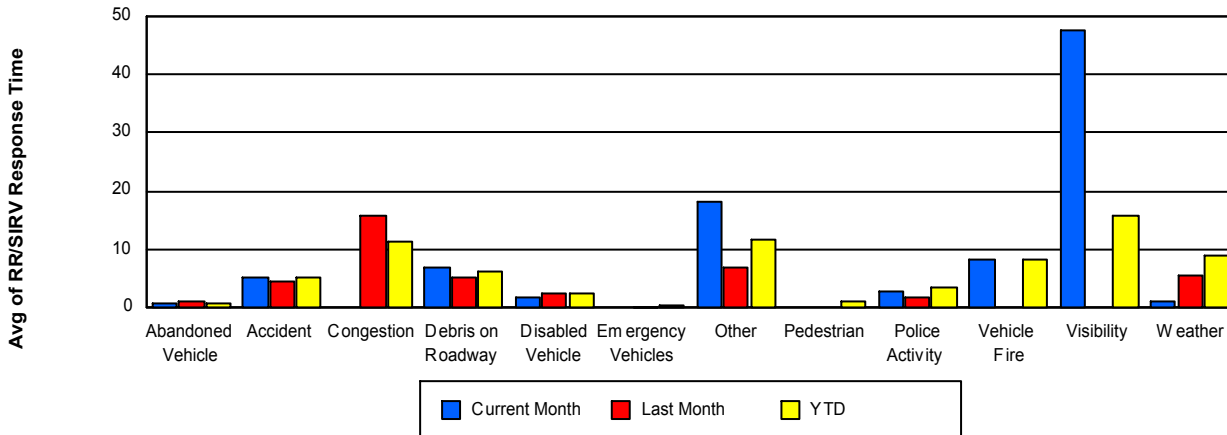
TMC Response Time



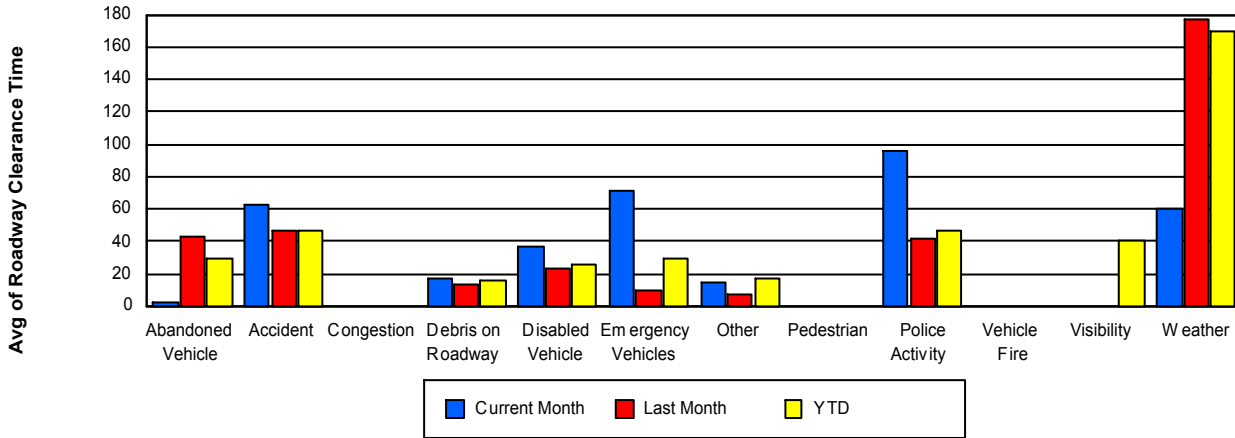
Road Ranger / SIRV Dispatch Time



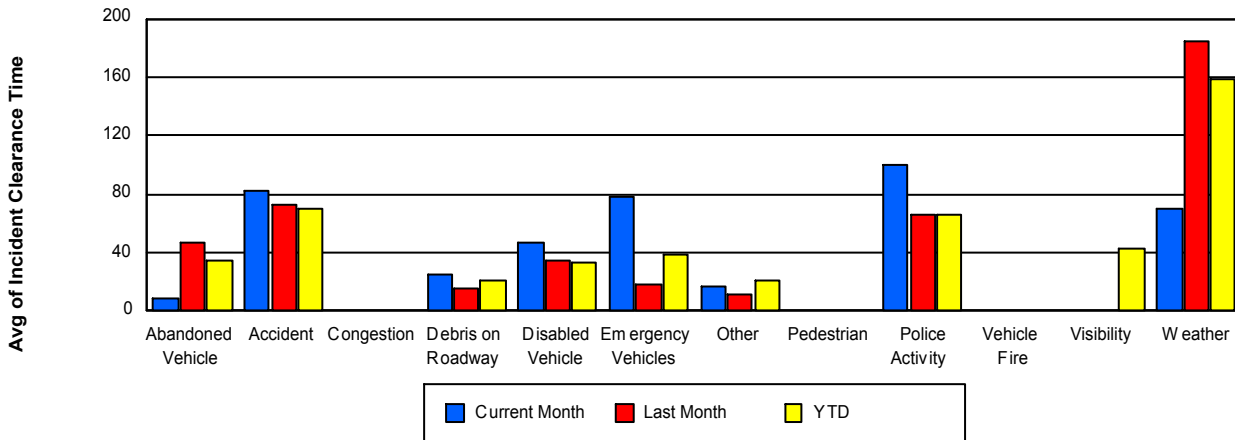
Road Ranger / SIRV Response Time



Roadway Clearance Time (2A)



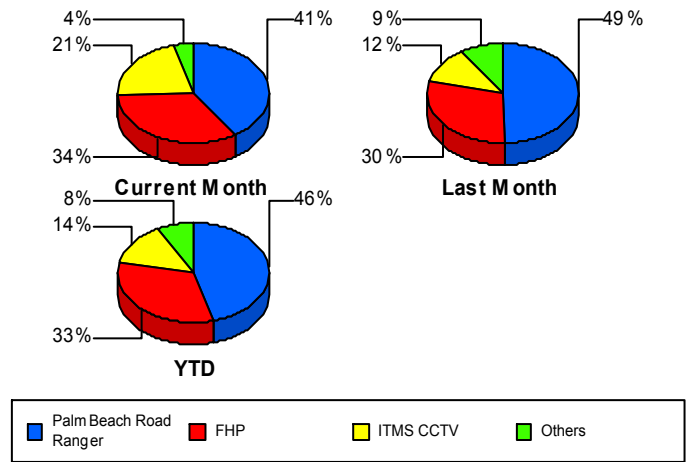
Incident Clearance Time (3B)



Incident Detection Methods

	Current Month	Last Month	YTD
Broward Road Ranger	1	3	5
Broward TMC	0	1	1
Construction CEI	0	1	4
District 4	3	18	39
FHP	47	84	244
ITMS	0	1	3
ITMS CCTV	29	33	101
Motorist	2	2	7
Palm Beach Road Rang	56	140	339
SmarTraveler (511)	0	0	2
Total	138	283	745

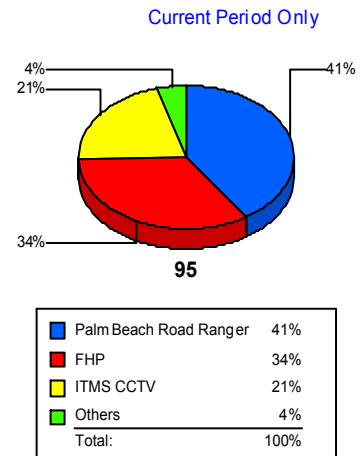
Total Incidents by Detection Method



Incident Detection Methods by Roadway

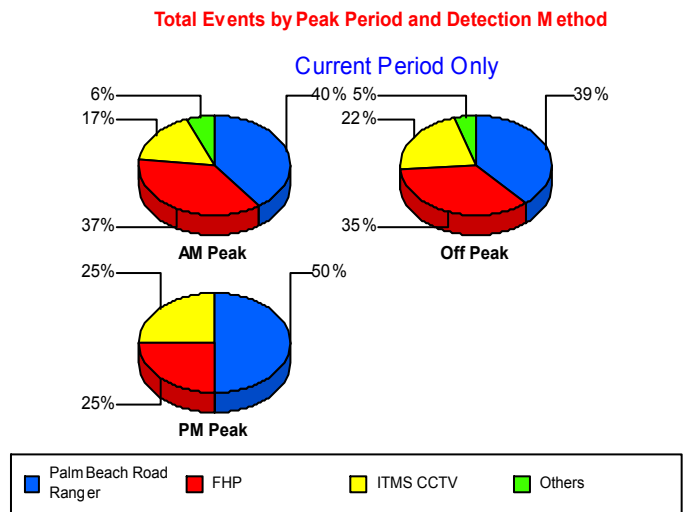
		Current Month	Last Month	YTD
95	Broward Road Ranger	1	3	5
	Broward TMC	0	1	1
	Construction CEI	0	1	4
	District 4	3	18	39
	FHP	47	84	244
	ITMS	0	1	3
	ITMS CCTV	29	33	101
	Motorist	2	2	7
	Palm Beach Road Rang	56	140	339
	SmarTraveler (511)	0	0	2
	Total	138	283	745
Total	138	283	745	

Total Events by Roadway and Detection Method



Incident Detection Methods by Peak Period

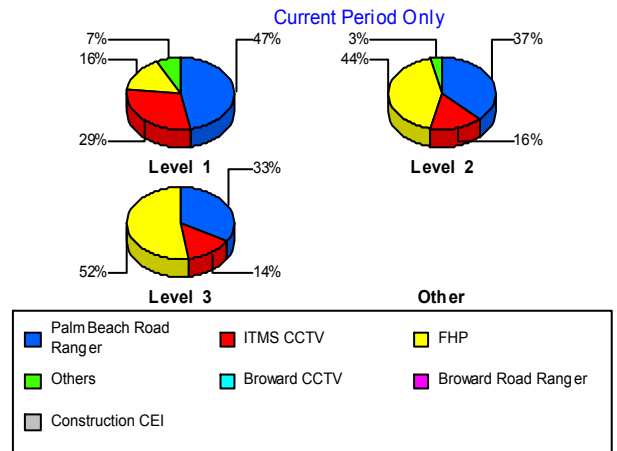
		Current Month	Last Month	YTD
AM Peak	Broward Road Ranger	0	0	1
	Broward TMC	0	1	1
	Construction CEI	0	1	1
	District 4	1	8	16
	FHP	13	15	52
	ITMS	0	1	1
	ITMS CCTV	6	12	30
	Motorist	1	1	3
	Palm Beach Road Rang	14	31	89
	SmarTraveler (511)	0	0	1
	Total	35	70	195
Off Peak	Broward Road Ranger	1	0	1
	Construction CEI	0	0	3
	District 4	2	6	18
	FHP	29	54	145
	ITMS CCTV	18	14	47
	Motorist	1	1	3
	Palm Beach Road Rang	32	81	182
	Total	83	156	399
PM Peak	Broward Road Ranger	0	3	3
	District 4	0	4	5
	FHP	5	15	47
	ITMS	0	0	2
	ITMS CCTV	5	7	24
	Motorist	0	0	1
	Palm Beach Road Rang	10	28	68
	SmarTraveler (511)	0	0	1
	Total	20	57	151
Total	138	283	745	



Incident Detection Methods by Severity

		Current Month	Last Month	YTD
Level 1	Broward Road Ranger	1	2	4
	Broward TMC	0	1	1
	Construction CEI	0	1	2
	District 4	2	14	29
	FHP	9	30	88
	ITMS CCTV	16	16	49
	Motorist	1	1	3
	Palm Beach Road Rang	26	80	199
	SmarTraveler (511)	0	0	1
	Total	55	145	376
	Level 2	Broward Road Ranger	0	1
Construction CEI		0	0	2
District 4		1	3	8
FHP		27	39	115
ITMS		0	1	3
ITMS CCTV		10	9	34
Motorist		1	1	4
Palm Beach Road Rang		23	46	107
SmarTraveler (511)		0	0	1
Total		62	100	275
Level 3	District 4	0	1	2
	FHP	11	15	41
	ITMS CCTV	3	8	18
	Palm Beach Road Rang	7	14	33
	Total	21	38	94
Total		138	283	745

Total Events by Severity and Detection Method



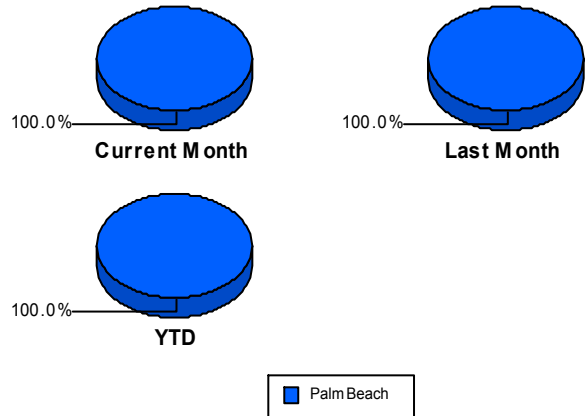
Road Ranger / SIRV Performance Measures

Road Ranger / SIRV Performance By County

Values presented are:
 - Total Events with a RR/SIRV Response
 - Total RR/SIRV Responses,
 - Total Activities Performed

	Current Mo	Last Month	YTD
Palm Beach	2,938	2,904	11,029
	3,058	3,032	11,497
	3,313	3,263	12,301

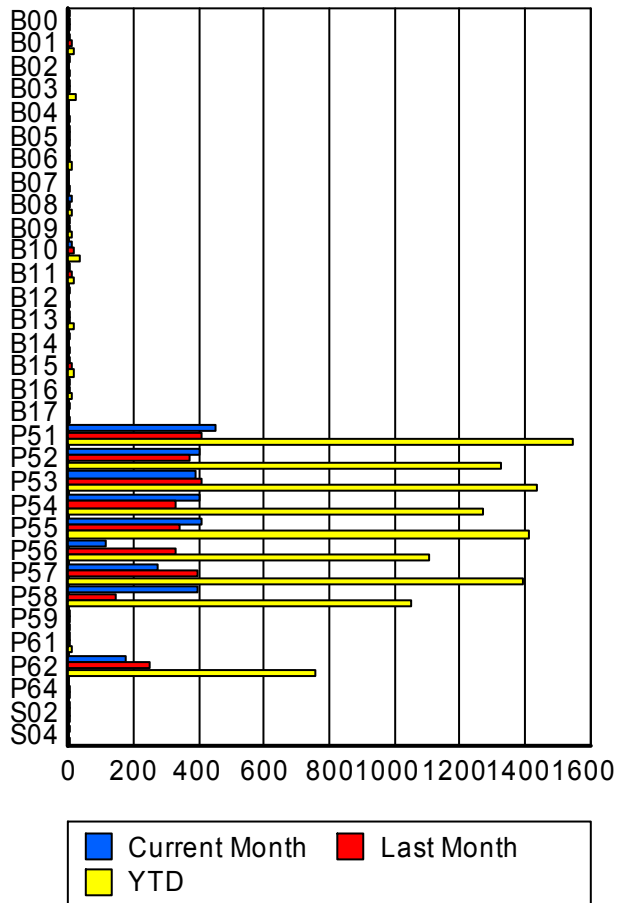
RR/SIRV Responses per County



Road Ranger / SIRV Performance By Truck

	Current Mo	Last Month	YTD
B00	1	2	6
	1	2	6
	1	2	7
B01	3	7	18
	3	7	18
	3	8	20
B02	1	0	1
	1	0	1
	1	0	1
B03	5	4	18
	5	4	19
	5	4	19
B04	0	0	1
	0	0	1
	0	0	1
B05	1	1	5
	1	1	5
	1	1	5
B06	2	1	8
	2	1	8
	2	1	8
B07	0	0	4
	0	0	4
	0	0	4
B08	6	1	11
	7	1	12
	7	1	12

RR/SIRV Responses per Truck



	Current Mo	Last Month	YTD
B09	1	3	11
	2	3	12
	2	4	13
B10	11	14	31
	11	14	31
	14	17	37
B11	2	7	15
	2	7	15
	2	8	16
B12	3	0	4
	3	0	4
	3	0	4
B13	4	1	13
	4	1	13
	4	1	13
B14	1	0	1
	1	0	1
	1	0	1
B15	1	8	14
	1	8	14
	1	9	15
B16	4	2	9
	4	2	9
	5	2	10
B17	2	0	2
	2	0	2
	2	0	2
P51	447	407	1,539
	451	409	1,550
	486	438	1,661
P52	401	366	1,319
	403	370	1,328
	446	404	1,430
P53	387	401	1,426
	391	405	1,437
	419	435	1,524
P54	395	327	1,260
	399	330	1,269
	429	364	1,364
P55	408	340	1,405
	409	342	1,412
	439	362	1,502
P56	111	323	1,095
	112	329	1,106
	126	353	1,186

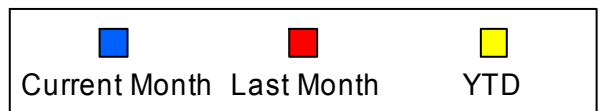
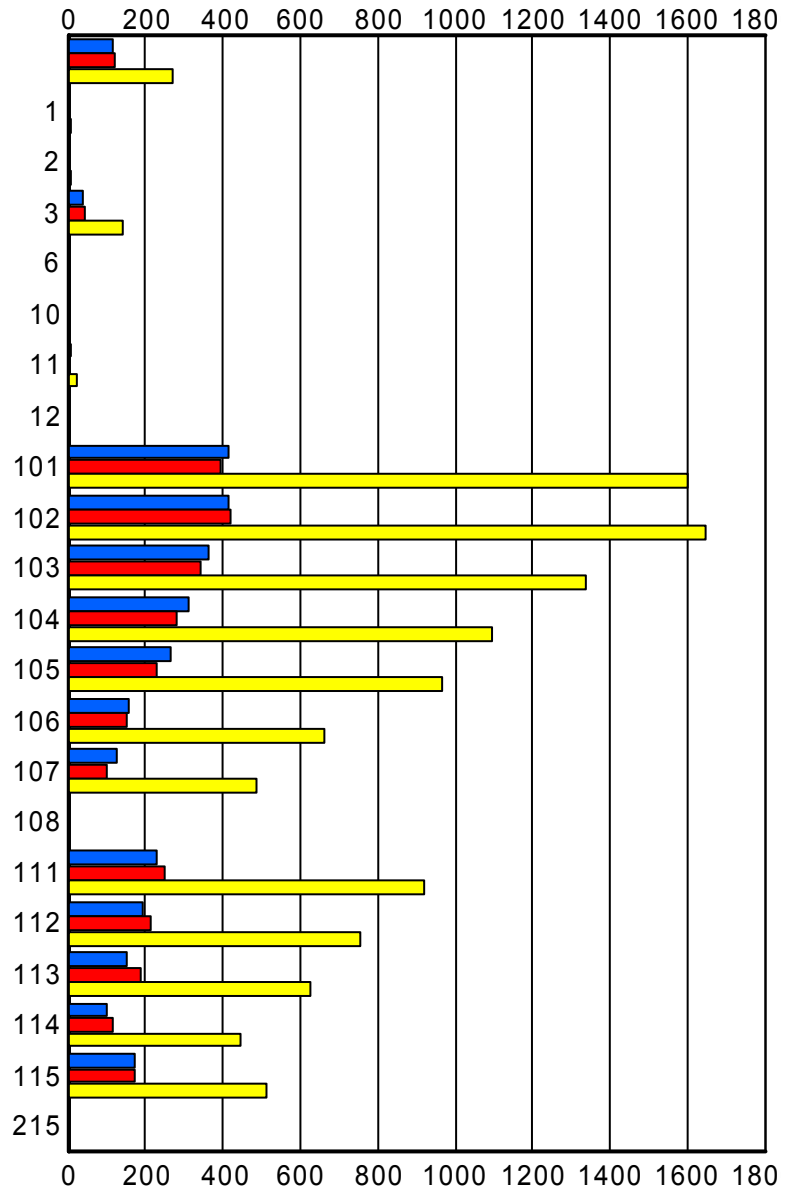
	Current Mo	Last Month	YTD
P57	267	392	1,379
	271	395	1,395
	299	423	1,504
P58	393	144	1,045
	393	144	1,050
	425	154	1,122
P59	1	1	3
	1	1	3
	1	1	3
P61	2	2	7
	2	2	7
	2	2	7
P62	172	249	752
	174	251	759
	185	266	804
P64	0	2	2
	0	2	2
	0	2	2
S02	1	1	3
	1	1	3
	1	1	3
S04	1	0	1
	1	0	1
	1	0	1

Road Ranger / SIRV Performance By Beat

	Current Mo	Last Month	YTD
	113	121	268
	114	122	270
	121	126	282
1	1	4	8
	1	4	8
	1	4	9
2	2	4	6
	2	4	6
	2	4	6
3	38	42	137
	39	43	141
	43	50	152
6	1	0	1
	1	0	1
	1	0	1
10	0	0	1
	0	0	1
	0	0	1
11	5	4	20
	6	4	21
	6	4	22
12	2	0	2
	2	0	2
	2	0	2
101	412	392	1,589
	413	396	1,600
	453	425	1,708
102	415	416	1,640
	416	417	1,647
	460	450	1,774
103	359	342	1,329
	362	342	1,338
	394	370	1,437
104	307	278	1,082
	309	281	1,093
	332	315	1,188
105	259	224	950
	264	227	964
	279	240	1,020
106	153	149	654
	154	152	659
	164	161	697
107	126	102	480
	127	102	485
	137	107	510

Values presented are:
 - Total Events with a RR/SIRV Response
 - Total RR/SIRV Responses,
 - Total Activities Performed

RR/SIRV Responses per Beat



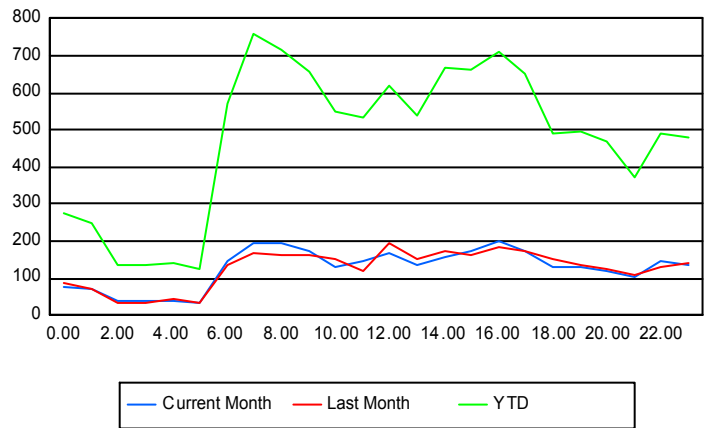
	Current Mo	Last Month	YTD
108	1	0	1
	1	0	1
	1	0	1
111	226	249	907
	229	251	917
	247	279	987
112	192	210	750
	193	213	756
	216	222	804
113	145	183	616
	149	185	627
	163	195	676
114	100	116	441
	102	117	444
	105	127	469
115	171	170	510
	172	172	514
	184	184	553
215	2	0	2
	2	0	2
	2	0	2

Road Ranger / SIRV Performance By Time of Day

Values presented are:
 - Total Events with a RR/SIRV Response
 - Total RR/SIRV Responses,
 - Total Activities Performed

	Current Mo	Last Month	YTD
12AM-1AM	71	81	267
	74	86	278
	78	94	296
1AM-2AM	67	66	231
	72	70	249
	84	79	280
2AM-3AM	33	36	130
	37	36	138
	42	37	147
3AM-4AM	38	28	128
	39	32	135
	41	35	146
4AM-5AM	34	36	125
	39	43	143
	42	45	155
5AM-6AM	30	29	109
	31	36	126
	34	42	139

Number of Responses / Hour of the Day



	Current Mo	Last Month	YTD
6AM-7AM	140	132	551
	146	136	571
	158	143	614
7AM-8AM	193	165	736
	196	166	760
	206	176	801
8AM-9AM	186	156	689
	195	160	718
	210	173	766
9AM-10AM	169	157	629
	175	165	655
	196	177	705
10AM-11AM	129	144	529
	133	151	547
	149	160	599
11AM-12PM	138	111	508
	144	118	531
	154	123	563
12PM-1PM	156	183	583
	167	193	617
	178	210	668
1PM-2PM	130	147	517
	136	150	538
	147	165	585
2PM-3PM	154	173	653
	159	176	670
	178	194	723
3PM-4PM	173	161	647
	175	165	660
	186	178	691
4PM-5PM	195	178	685
	199	184	708
	223	197	754
5PM-6PM	168	170	628
	174	175	654
	191	187	694
6PM-7PM	128	144	471
	131	151	492
	136	159	516
7PM-8PM	130	131	486
	132	135	498
	145	141	525
8PM-9PM	112	122	449
	120	127	468
	125	140	494

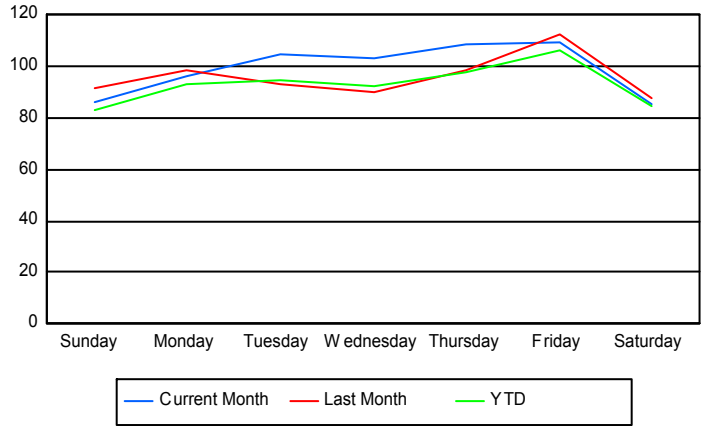
	Current Mo	Last Month	YTD
9PM-10PM	95	98	349
	101	108	370
	107	114	387
10PM-11PM	138	124	471
	146	130	492
	155	140	524
11PM-12AM	131	132	458
	137	139	479
	148	154	529

Road Ranger / SIRV Performance By Day of Week

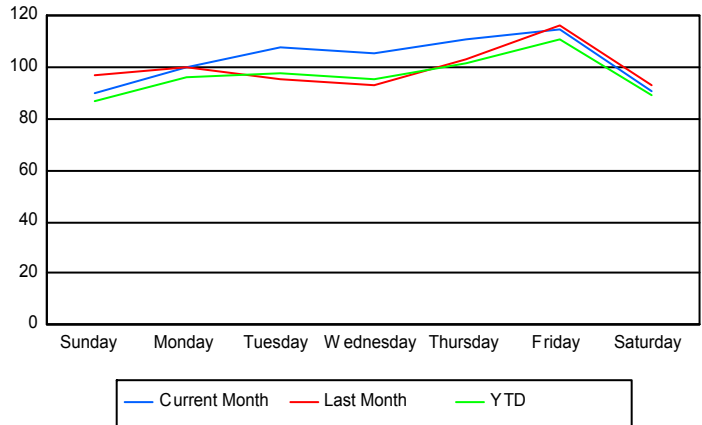
Values presented are:
 - Total Events with a RR/SIRV Response
 - Total RR/SIRV Responses,
 - Total Activities Performed

	Current Mo	Last Month	YTD
Sunday	343	445	1,371
	358	469	1,433
	395	499	1,536
Monday	378	484	1,559
	395	495	1,610
	421	525	1,712
Tuesday	518	370	1,666
	535	378	1,729
	575	402	1,841
Wednesday	505	357	1,635
	520	369	1,688
	558	407	1,809
Thursday	425	382	1,626
	433	403	1,689
	465	437	1,801
Friday	436	445	1,787
	456	460	1,860
	506	501	2,018
Saturday	338	431	1,406
	361	458	1,488
	393	492	1,584

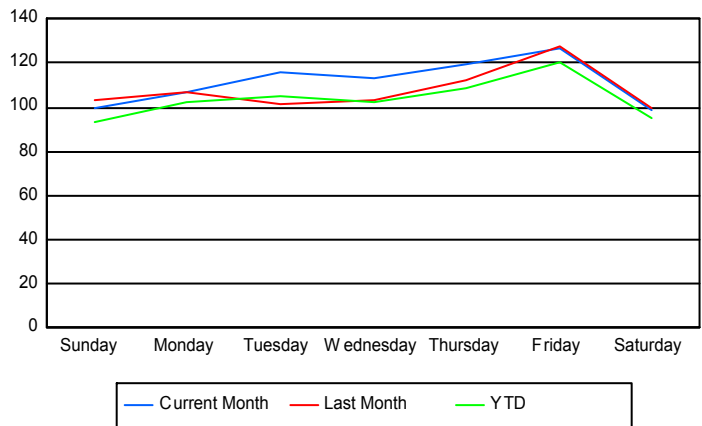
Avg # of events with a RR/SIRV Response per Day of the Week



Avg # of RR/SIRV Responses per Day of the Week



Avg # of RR/SIRV Activities Performed per Day of the Week



Road Ranger/ SIRV Responses per Time of Day and Day of Week

