



Monthly Performance Measures Report Palm Beach County



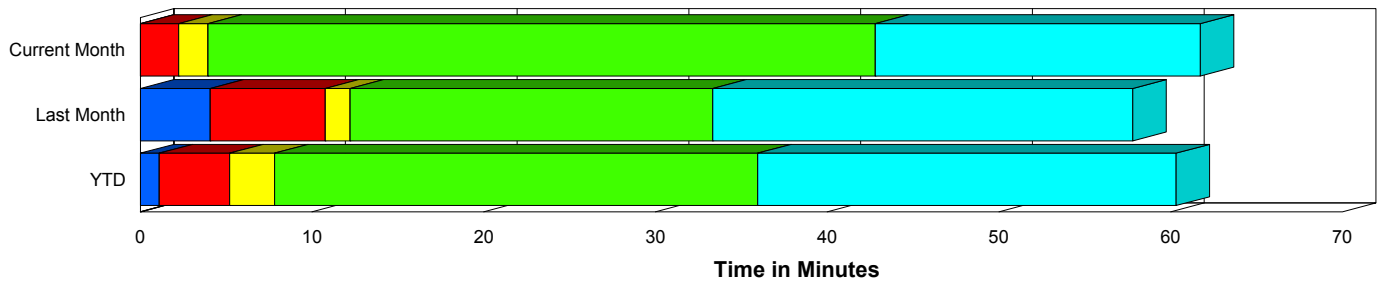
Created on:
May 04, 2009
8:59 am

Period From Apr 1, 2009 to Apr 30, 2009

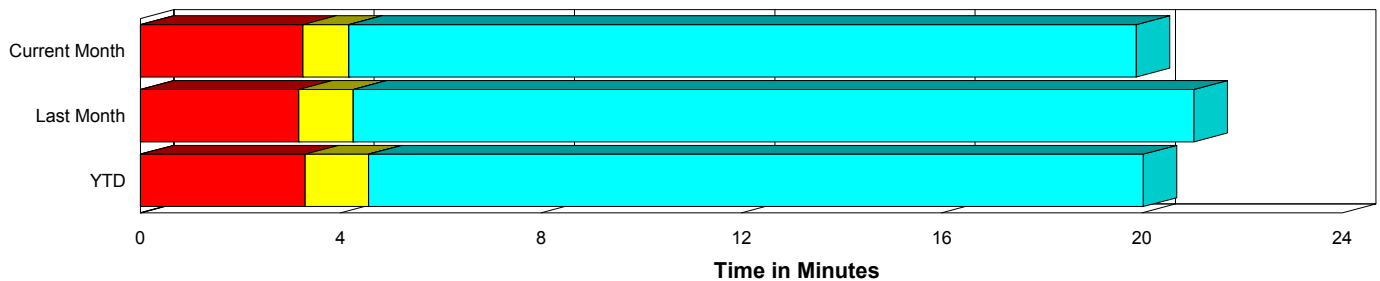
Performance Measures Summary

	Traffic Events (No Lanes Blocked)			Incidents (Lanes Blocked)		
	<u>This Month</u>	<u>Last Month</u>	<u>YTD</u>	<u>This Month</u>	<u>Last Month</u>	<u>YTD</u>
Number of Events	1,252	1,216	4,855	101	95	348
TMC Detection (min.)	0.00	0.00	0.00	0.00	4.08	1.11
TMC Verification (min.)	3.25	3.16	3.29	2.23	6.70	4.10
TMC Response (min.)	4.80	4.97	5.46	4.76	4.66	6.27
RR Dispatch Time (min.)	1.31	1.80	1.82	1.44	1.55	2.52
RR Response Time (min.)	3.50	3.21	3.69	3.32	3.12	3.75
Roadway Clearance (min.)				44.96	35.10	38.78
Event Clearance (min.)	20.52	21.76	20.93	63.65	59.09	62.93
# of Events w/ RR/SIRV	1,075	1,006	3,900	71	75	278
RR/SIRV Responses	1,075	1,006	3,900	71	75	278
RR/SIRV Activities	1,173	1,109	4,231	104	102	414

Incident Clearance Time-Line



Traffic Event (Non-Lane Blockage) Time-Line



■ Avg. TMC Detection Time	■ Avg. Time from TMC Response to Roadway Clearance*
■ Avg. Time from TMC Detection to TMC Verification	■ Avg. Time from Roadway Clearance to Incident/Event Clearance**
■ Avg. Time from TMC Verification to TMC Response	

* Roadway clearance equals all travel lanes open

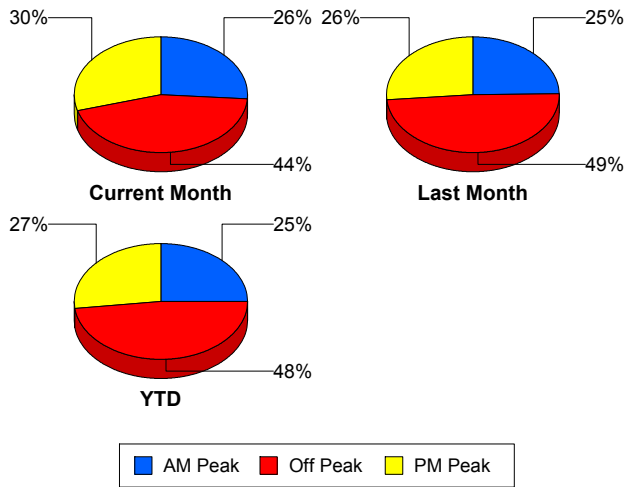
** Incident clearance equals time when last responder has left the scene

Performance Measures by Peak Period

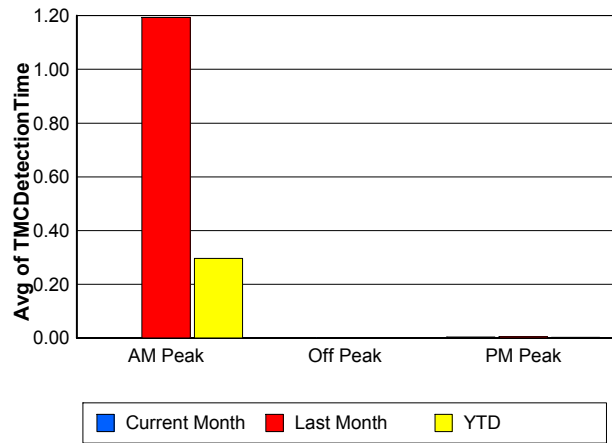
Note: AM peak period is defined as 6am to 10am and PM peak period is defined as 3pm to 7pm.

	AM Peak			Off Peak			PM Peak		
	<u>Current Month</u>	<u>Last Month</u>	<u>YTD</u>	<u>Current Month</u>	<u>Last Month</u>	<u>YTD</u>	<u>Current Month</u>	<u>Last Month</u>	<u>YTD</u>
Number of Events	352	323	1,303	601	641	2,499	400	347	1,401
Number of Incidents	35	26	102	41	40	148	25	29	98
TMC Detection (min.)	0.00	1.19	0.30	0.00	0.00	0.00	0.00	0.00	0.00
TMC Verification (min.)	2.85	4.08	3.23	2.93	2.49	2.82	3.82	4.54	4.39
TMC Response (min.)	4.11	3.81	4.17	5.37	5.35	6.64	4.75	5.46	5.38
RR Dispatch Time (min.)	0.86	1.28	1.02	1.96	2.43	2.89	0.99	1.36	1.37
RR Response Time (min.)	3.26	2.65	3.20	3.42	2.91	3.79	3.77	4.12	4.03
Event Clearance (min.)	22.55	23.38	21.76	27.90	27.43	26.98	18.54	19.98	19.80
Roadway Clearance (min.)	33.31	49.78	40.16	56.52	32.46	43.20	42.33	25.58	30.66
Incident Clearance (min.)	55.88	65.12	63.66	74.22	67.02	71.79	57.19	42.75	48.81
# of Events w/ RR/SIRV	340	304	1,238	436	453	1,641	370	324	1,299
RR/SIRV Responses	340	304	1,238	436	453	1,641	370	324	1,299
RR/SIRV Activities	374	350	1,410	491	503	1,821	412	358	1,414

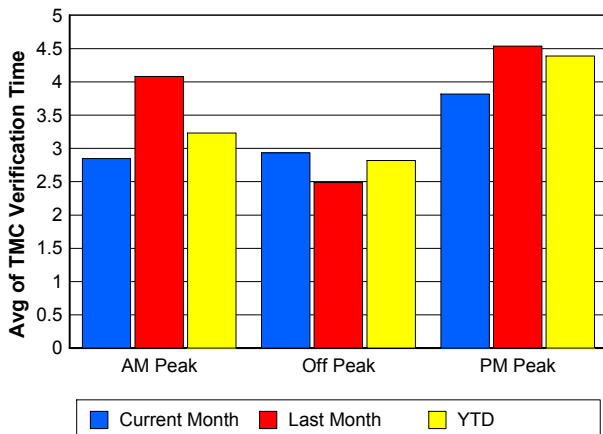
Number of Events / Peak Period



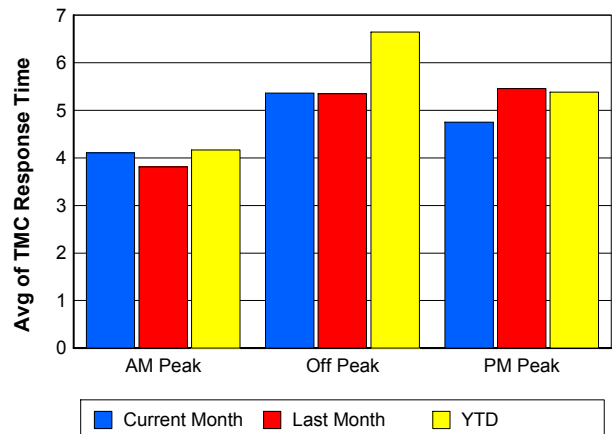
TMC Detection Time



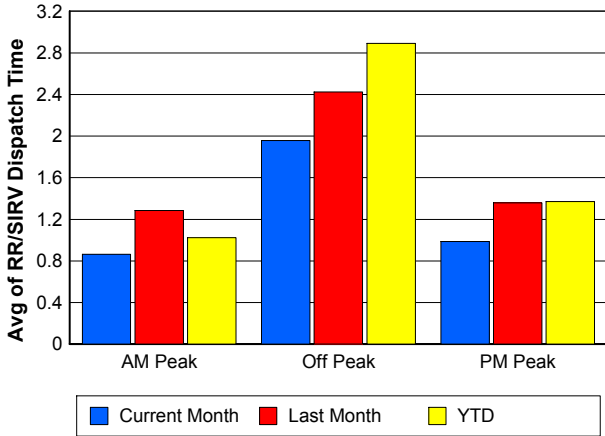
TMC Verification Time



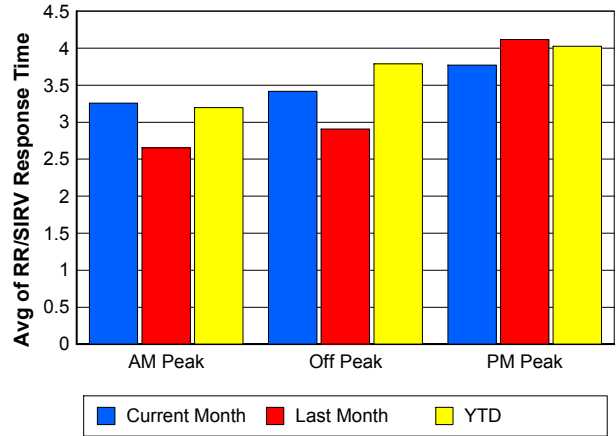
TMC Response Time



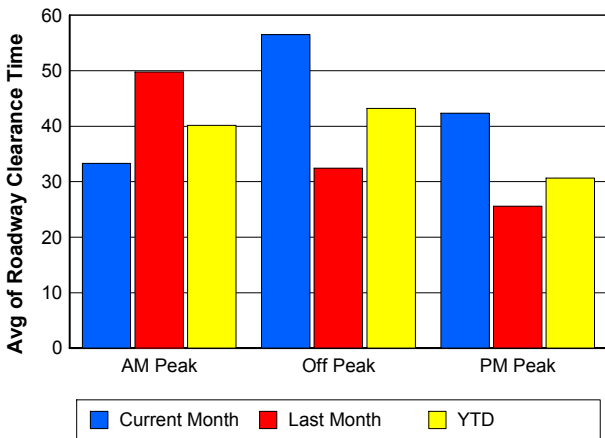
Road Ranger / SIRV Dispatch Time



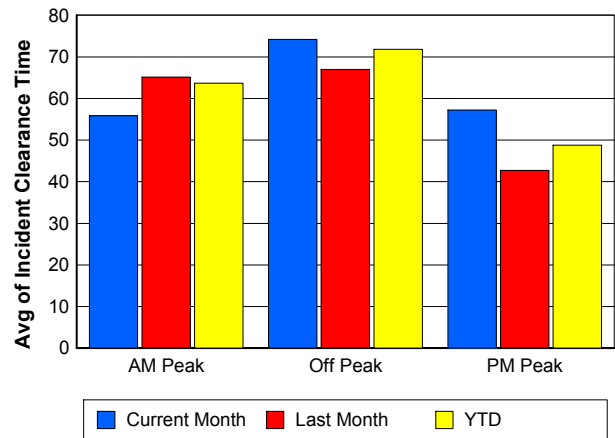
Road Ranger / SIRV Response Time



Roadway Clearance Time (2A)



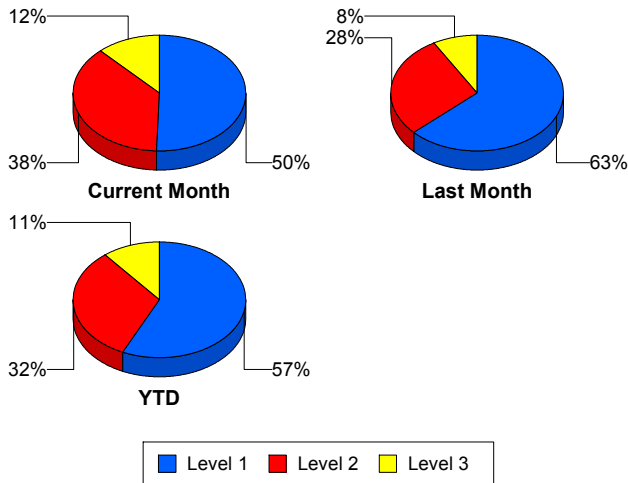
Incident Clearance Time (3B)



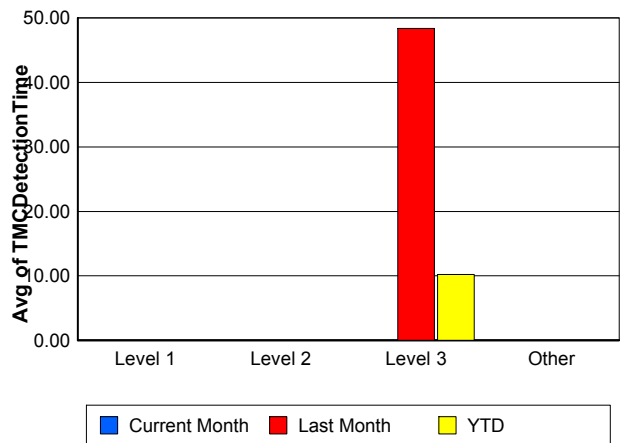
Performance Measures by Severity

	Level 1			Level 2			Level 3			Other		
	<u>This Month</u>	<u>Last Month</u>	<u>YTD</u>	<u>This Month</u>	<u>Last Month</u>	<u>YTD</u>	<u>This Month</u>	<u>Last Month</u>	<u>YTD</u>	<u>This Month</u>	<u>Last Month</u>	<u>YTD</u>
Number of Events	51	60	198	38	27	112	12	8	38	1,252	1,216	4,855
Number of Incidents	51	60	198	38	27	112	12	8	38	0	0	0
TMC Detection (min.)	0.00	0.00	0.00	0.00	0.00	0.00	0.00	48.40	10.19	0.00	0.00	0.00
TMC Verification (min.)	2.26	1.82	1.95	2.53	4.22	4.05	1.14	51.68	15.70	3.25	3.16	3.29
TMC Response (min.)	4.33	3.04	3.68	5.86	8.49	8.43	3.94	7.57	16.47	4.80	4.97	5.46
RR Dispatch Time (min.)	1.12	1.16	0.98	2.08	2.63	2.95	1.34	1.77	11.28	1.31	1.80	1.82
RR Resp. Time (min.)	3.21	1.90	2.71	3.78	5.85	5.48	2.59	5.79	5.18	3.50	3.21	3.69
Event Clearance (min.)	33.84	34.29	39.57	75.02	86.81	75.90	154.33	151.57	146.44	20.52	21.76	20.93
Roadway Clear. (min.)	14.64	13.48	14.15	54.73	55.01	52.46	142.91	130.09	126.78			
Incident Clearance (min.)	33.84	34.29	39.57	75.02	86.81	75.90	154.33	151.57	146.44			
# of Events w/ RR/SIRV	41	52	171	22	17	81	8	6	26	1,075	1,006	3,900
RR/SIRV Responses	41	52	171	22	17	81	8	6	26	1,075	1,006	3,900
RR/SIRV Activities	55	65	225	33	28	141	16	9	48	1,173	1,109	4,231

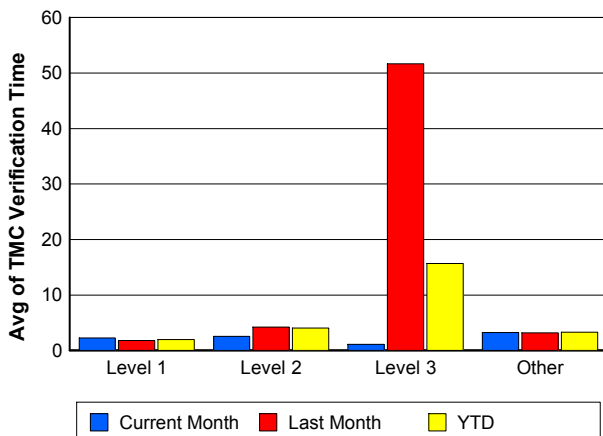
Number of Events / Severity



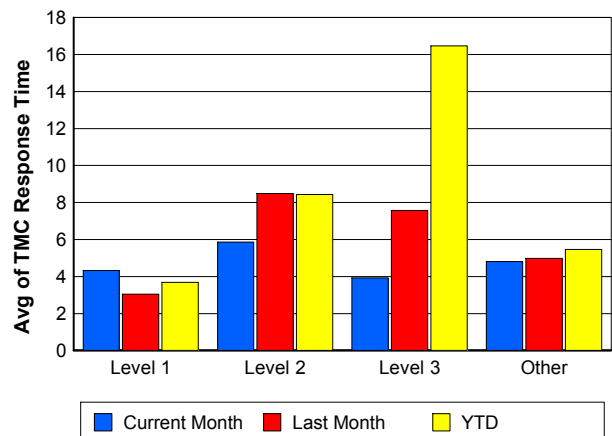
TMC Detection Time



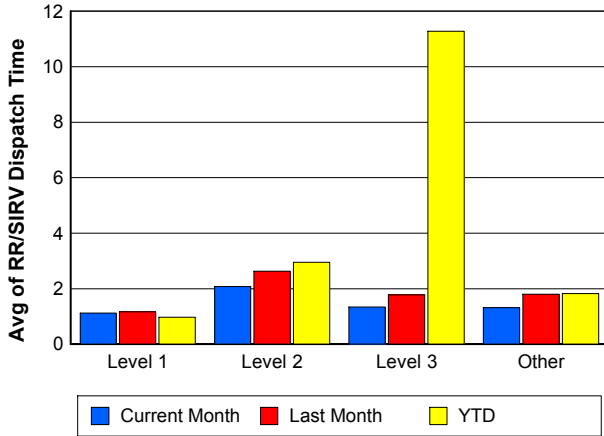
TMC Verification Time



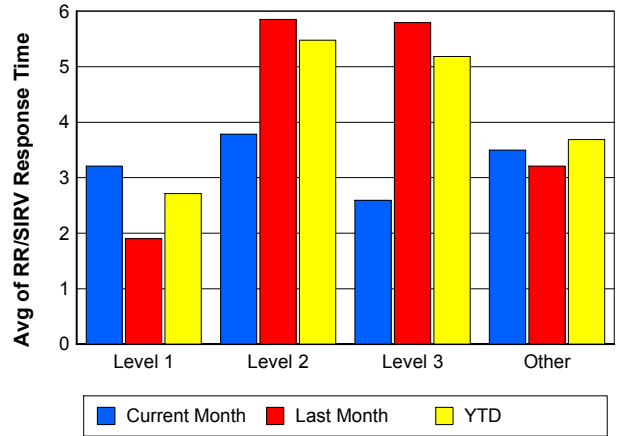
TMC Response Time



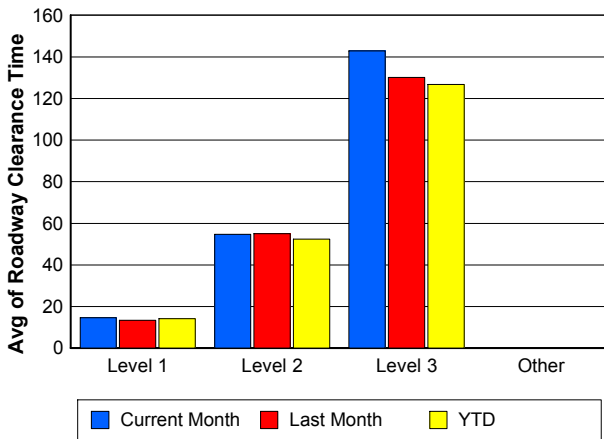
Road Ranger / SIRV Dispatch Time



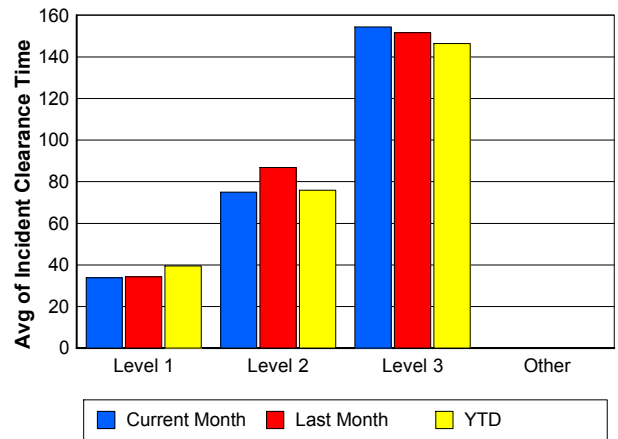
Road Ranger / SIRV Response Time



Roadway Clearance Time (2A)



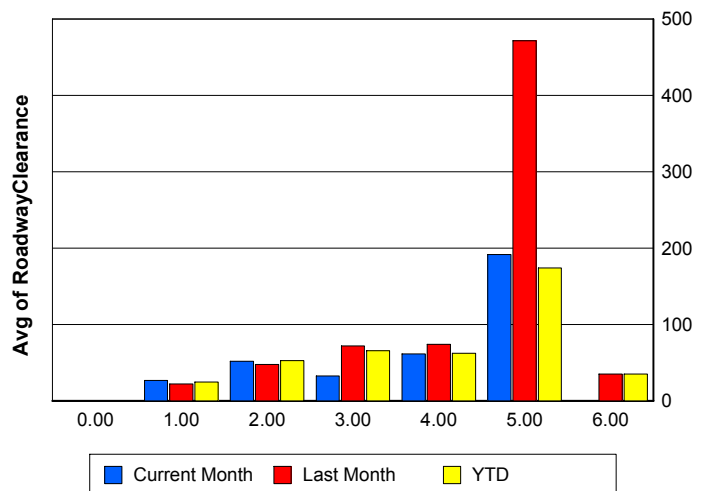
Incident Clearance Time (3B)



Roadway Clearance by Maximum Number of Lanes Blocked

	Current Month	Last Month	YTD
0			
1	26.77	22.26	24.52
2	51.56	47.48	52.61
3	32.40	72.04	65.75
4	61.38	73.77	62.34
5	191.32	471.57	173.87
6	0.00	34.87	34.87

Roadway Clearance Time (2A)



Performance Measures by Roadway

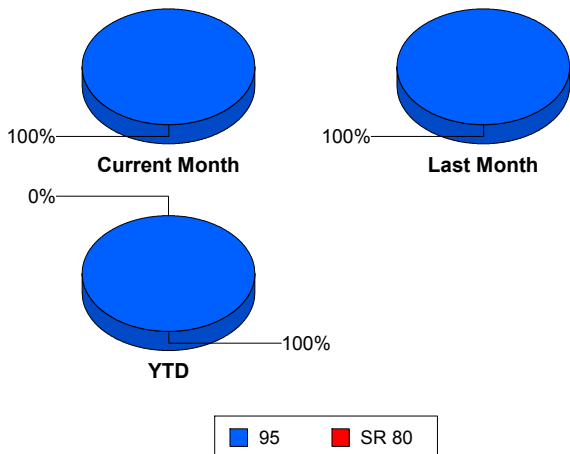
95

	<u>Current Month</u>	<u>Last Month</u>	<u>YTD</u>
Number of Events	1,353	1,311	5,201
Number of Incidents	101	95	347
TMC Detection (min.)	0.00	0.30	0.07
TMC Verification (min.)	3.17	3.42	3.34
TMC Response (min.)	4.80	4.95	5.52
RR Dispatch Time (min.)	1.32	1.78	1.87
RR Resp. Time (min.)	3.49	3.20	3.69
Event Clearance (min.)	23.74	24.46	23.72
Roadway Clear. (min.)	44.96	35.10	38.79
Incident Clearance (min.)	63.65	59.09	62.99
# of Events w/ RR/SIRV	1,146	1,081	4,178
RR/SIRV Responses	1,146	1,081	4,178
RR/SIRV Activities	1,277	1,211	4,645

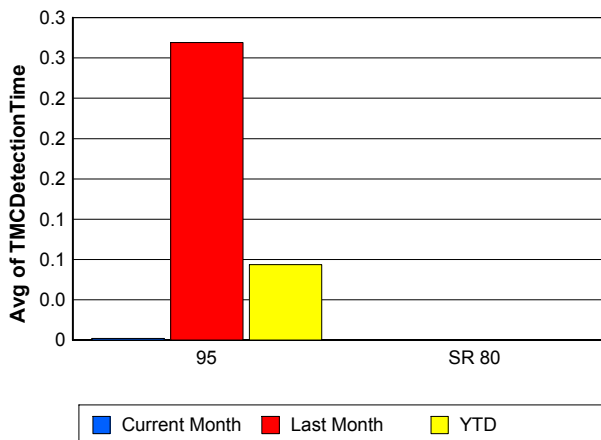
SR 80

	<u>YTD</u>
Number of Events	2
Number of Incidents	1
TMC Detection (min.)	0.00
TMC Verification (min.)	
TMC Response (min.)	
RR Dispatch Time (min.)	
RR Resp. Time (min.)	
Event Clearance (min.)	71.17
Roadway Clear. (min.)	34.23
Incident Clearance (min.)	43.68
# of Events w/ RR/SIRV	0
RR/SIRV Responses	0
RR/SIRV Activities	0

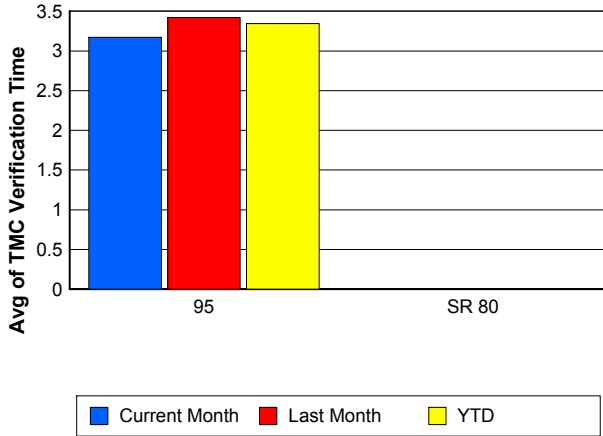
Number of Events / Roadway



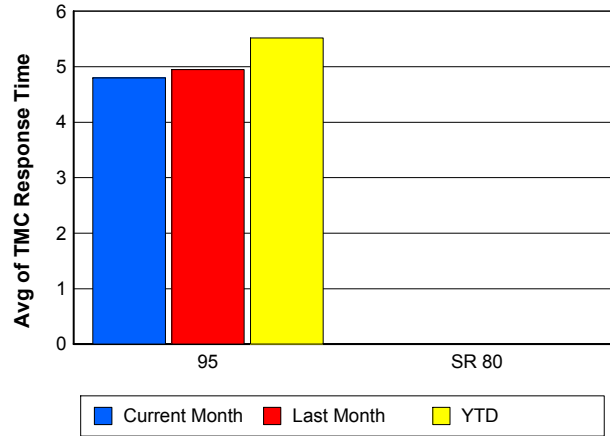
TMC Detection Time



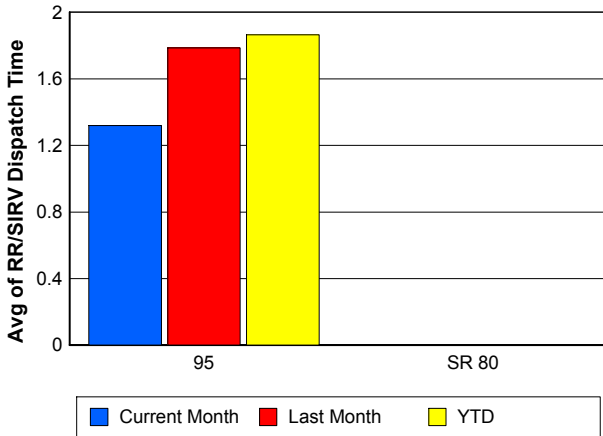
TMC Verification Time



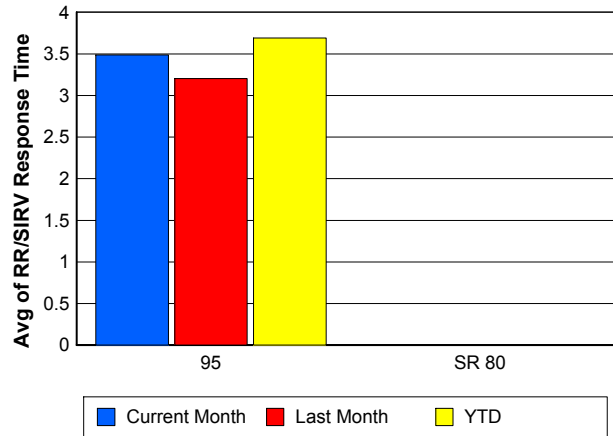
TMC Response Time



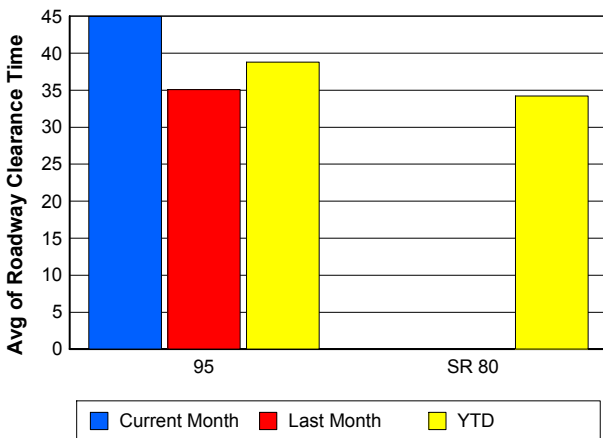
Road Ranger / SIRV Dispatch Time



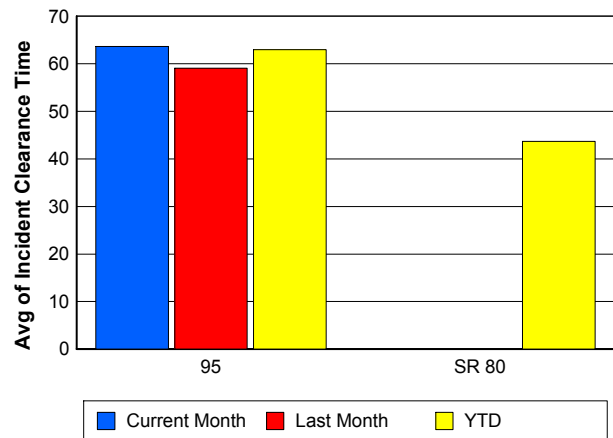
Road Ranger / SIRV Response Time



Roadway Clearance Time (2A)



Incident Clearance Time (3B)



Performance Measures by Event Type

Accident

	<u>Current Month</u>	<u>Last Month</u>	<u>YTD</u>
Number of Events	140	125	471
Number of Incidents	68	55	219
TMC Detection (min.)	0.01	0.01	0.01
TMC Verification (min.)	2.85	2.95	3.66
TMC Response (min.)	6.00	4.94	6.81
RR Dispatch Time (min.)	1.53	1.03	2.16
RR Response Time (min.)	4.47	3.91	4.65
Event Clearance (min.)	62.67	54.01	58.15
Roadway Clearance (min.)	53.34	31.91	43.65
Incident Clearance (min.)	77.29	57.36	72.57
# of Events w/ RR/SIRV	105	100	381
RR/SIRV Assists	105	100	381
RR/SIRV Activities	133	125	499

Debris on Roadway

	<u>Current Month</u>	<u>Last Month</u>	<u>YTD</u>
Number of Events	102	102	369
Number of Incidents	5	5	18
TMC Detection (min.)	0.00	0.00	0.00
TMC Verification (min.)	8.74	7.52	8.57
TMC Response (min.)	9.29	7.83	9.09
RR Dispatch Time (min.)	1.28	1.36	1.73
RR Response Time (min.)	8.01	6.53	7.36
Event Clearance (min.)	13.38	12.08	12.88
Roadway Clearance (min.)	10.01	8.90	13.41
Incident Clearance (min.)	16.68	10.31	16.14
# of Events w/ RR/SIRV	100	102	365
RR/SIRV Assists	100	102	365
RR/SIRV Activities	111	105	389

Disabled Vehicle

	<u>Current Month</u>	<u>Last Month</u>	<u>YTD</u>
Number of Events	985	919	3,616
Number of Incidents	22	24	79
TMC Detection (min.)	0.00	0.00	0.00
TMC Verification (min.)	2.88	3.13	3.20
TMC Response (min.)	3.95	4.04	4.52
RR Dispatch Time (min.)	1.31	1.38	1.50
RR Response Time (min.)	2.65	2.71	3.08
Event Clearance (min.)	17.87	17.61	18.22
Roadway Clearance (min.)	22.36	24.83	21.44
Incident Clearance (min.)	29.46	36.38	32.55
# of Events w/ RR/SIRV	908	841	3,284
RR/SIRV Assists	908	841	3,284
RR/SIRV Activities	1,002	947	3,618

Emergency Vehicles

	<u>Last Month</u>	<u>YTD</u>
Number of Events	4	6
Number of Incidents	2	3
TMC Detection (min.)	0.00	0.00
TMC Verification (min.)	0.00	0.00
TMC Response (min.)	11.26	7.51
RR Dispatch Time (min.)	8.01	5.34
RR Response Time (min.)	3.25	2.17
Event Clearance (min.)	41.56	31.68
Roadway Clearance (min.)	50.57	34.97
Incident Clearance (min.)	58.47	40.08
# of Events w/ RR/SIRV	2	3
RR/SIRV Assists	2	3
RR/SIRV Activities	3	4

Other

	<u>Current Month</u>	<u>Last Month</u>	<u>YTD</u>
Number of Events	70	105	458
Number of Incidents	0	2	6
TMC Detection (min.)	0.00	0.00	0.00
TMC Verification (min.)	2.29	0.41	1.01
TMC Response (min.)	14.28	33.09	22.98
RR Dispatch Time (min.)	1.35	21.43	12.61
RR Response Time (min.)	12.98	4.06	7.82
Event Clearance (min.)	42.46	54.34	39.69
Roadway Clearance (min.)		24.73	38.11
Incident Clearance (min.)		26.43	52.15
# of Events w/ RR/SIRV	24	22	98
RR/SIRV Assists	24	22	98
RR/SIRV Activities	22	16	83

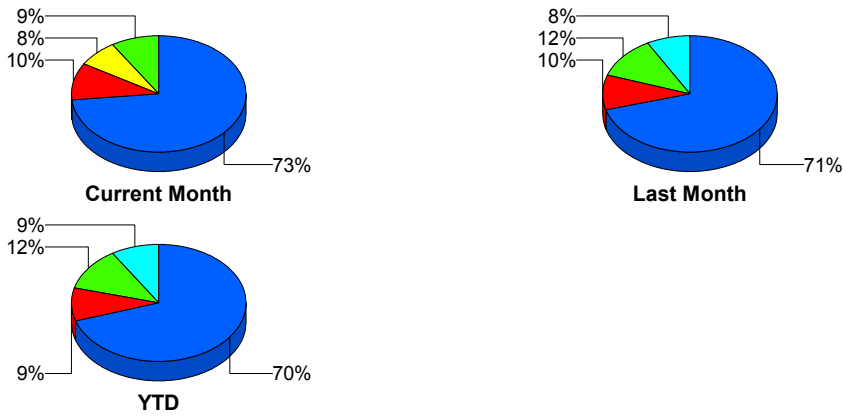
Police Activity

	<u>Current Month</u>	<u>Last Month</u>	<u>YTD</u>
Number of Events	46	46	243
Number of Incidents	6	6	18
TMC Detection (min.)	0.00	8.38	1.59
TMC Verification (min.)	0.00	9.09	1.72
TMC Response (min.)	5.52	10.41	11.23
RR Dispatch Time (min.)	1.34	5.76	8.01
RR Response Time (min.)	4.18	4.65	3.22
Event Clearance (min.)	27.58	41.30	25.26
Roadway Clearance (min.)	62.05	127.87	81.29
Incident Clearance (min.)	73.59	216.32	125.84
# of Events w/ RR/SIRV	3	6	18
RR/SIRV Assists	3	6	18
RR/SIRV Activities	3	7	20

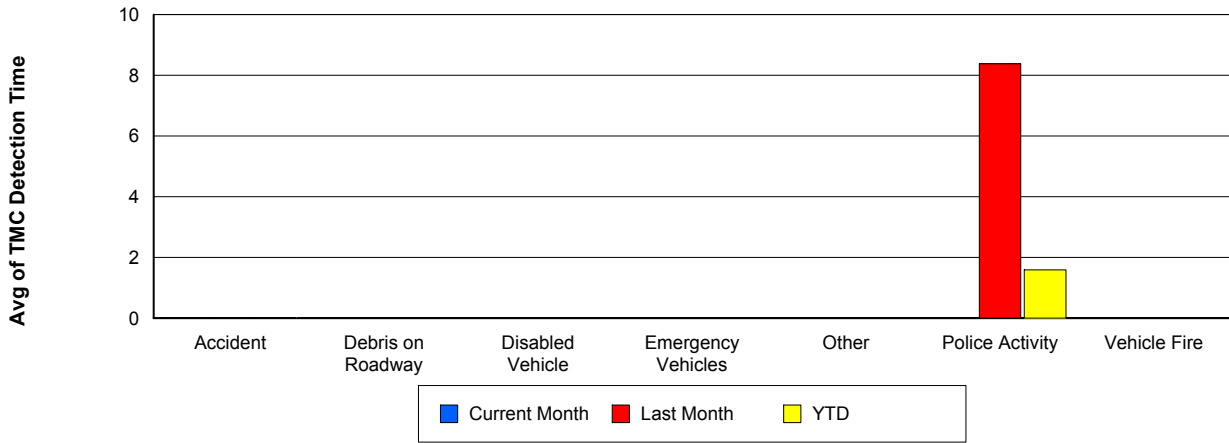
Vehicle Fire

	<u>Current Month</u>	<u>Last Month</u>	<u>YTD</u>
Number of Events	2	1	8
Number of Incidents	0	1	5
TMC Detection (min.)	0.00	0.00	0.00
TMC Verification (min.)	8.22	0.00	3.25
TMC Response (min.)	16.45		7.49
RR Dispatch Time (min.)	0.75		1.24
RR Response Time (min.)	15.70		6.25
Event Clearance (min.)	32.38	66.37	66.51
Roadway Clearance (min.)		21.73	40.97
Incident Clearance (min.)		66.37	89.54
# of Events w/ RR/SIRV	1	0	5
RR/SIRV Assists	1	0	5
RR/SIRV Activities	1	0	7

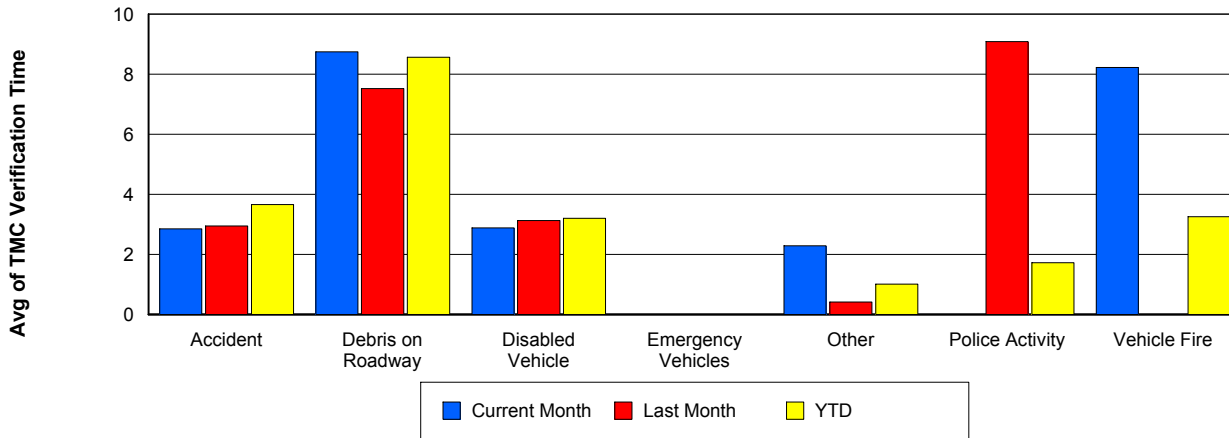
Number of Events / Event Type



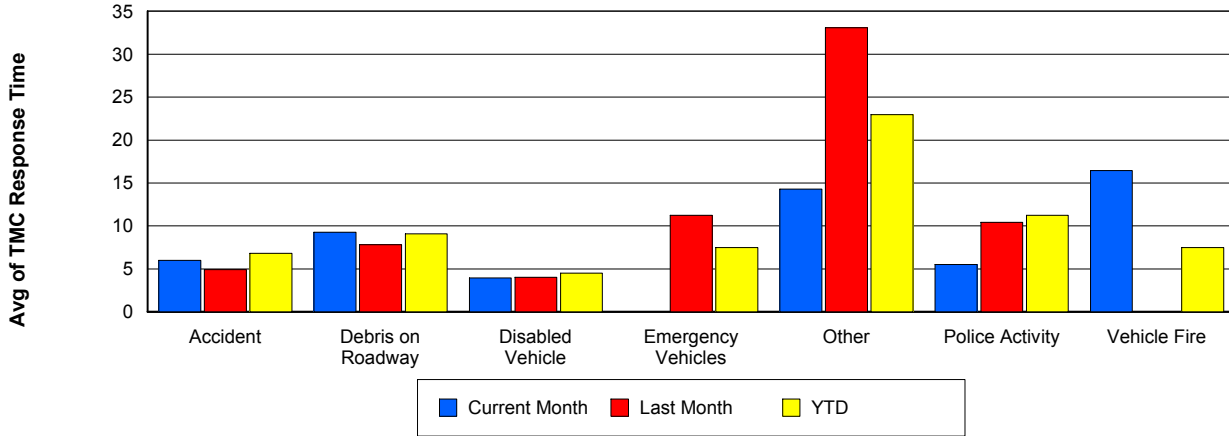
TMC Detection Time



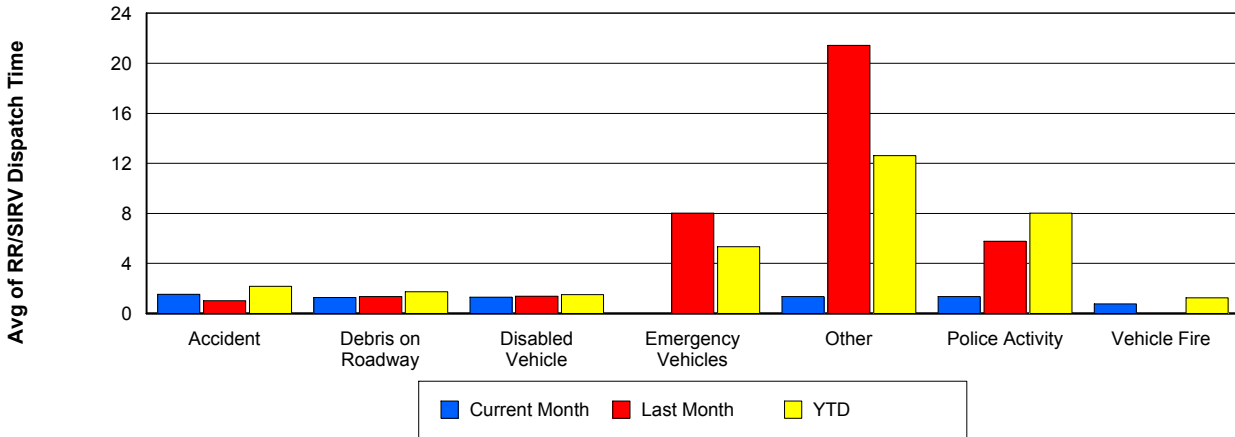
TMC Verification Time



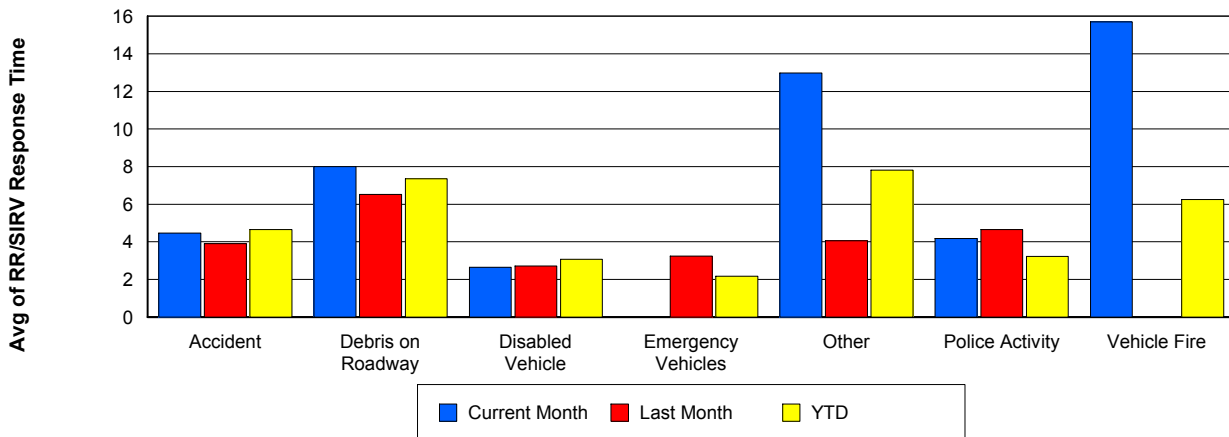
TMC Response Time



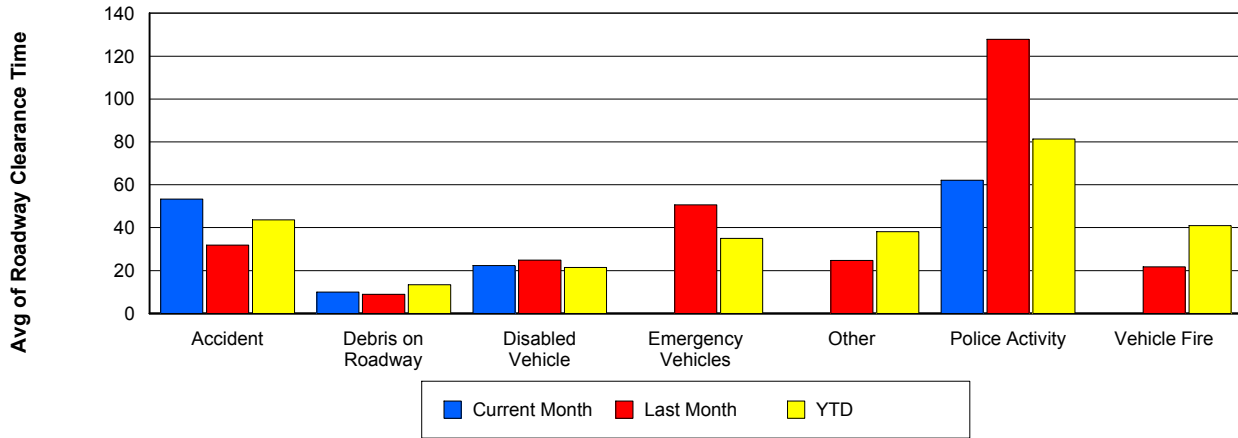
Road Ranger / SIRV Dispatch Time



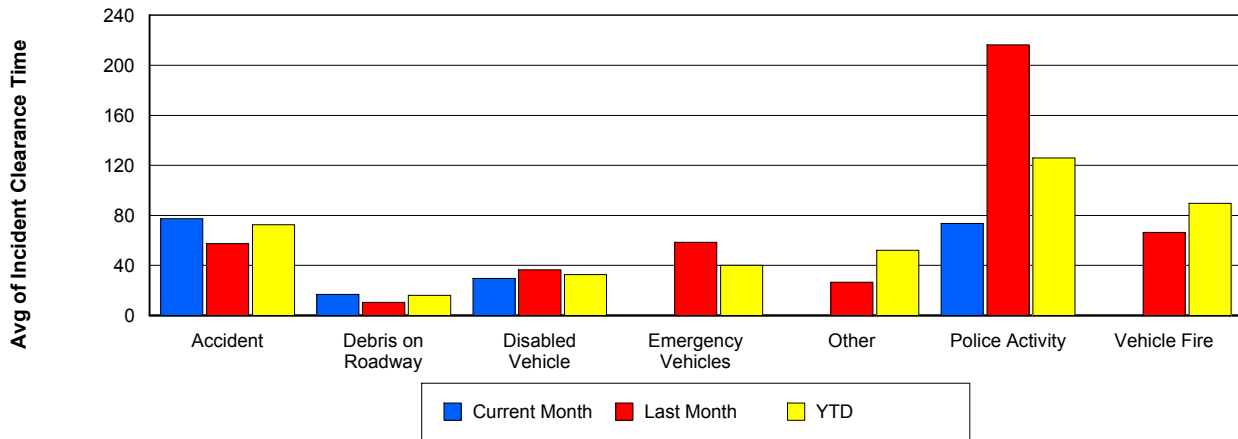
Road Ranger / SIRV Response Time



Roadway Clearance Time (2A)



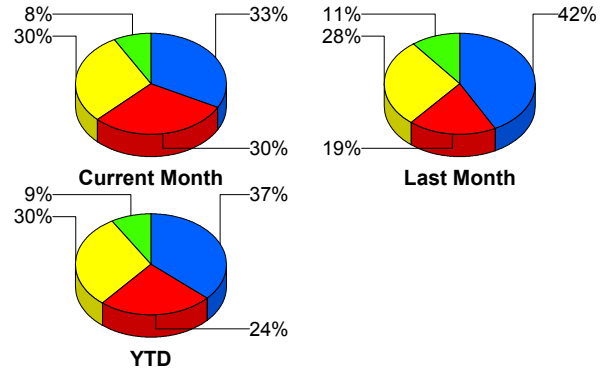
Incident Clearance Time (3B)



Incident Detection Methods

	Current Month	Last Month	YTD
Broward CCTV	1	1	5
Broward Road Ranger	1	2	3
District 4	3	2	7
FHP	30	18	85
I-95 Construction PIO	0	0	2
ITMS	1	0	3
ITMS CCTV	30	27	105
Local Police	1	0	1
Motorist	0	4	6
Palm Beach Road Ran	33	40	128
Road Watcher	0	1	1
SmarTraveler (511)	1	0	2
Total	101	95	348

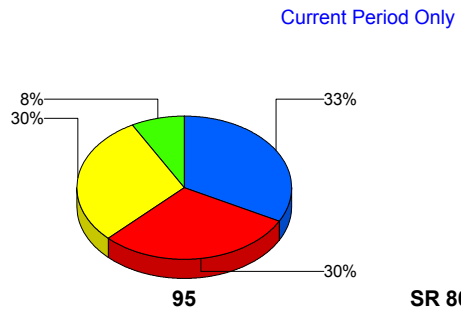
Total Incidents by Detection Method



Incident Detection Methods by Roadway

		Current Month	Last Month	YTD
95	Broward CCTV	1	1	5
	Broward Road Ranger	1	2	3
	District 4	3	2	7
	FHP	30	18	84
	I-95 Construction PIO	0	0	2
	ITMS	1	0	3
	ITMS CCTV	30	27	105
	Local Police	1	0	1
	Motorist	0	4	6
	Palm Beach Road Ran	33	40	128
	Road Watcher	0	1	1
	SmarTraveler (511)	1	0	2
	Total	101	95	347
SR 80	FHP	0	0	1

Total Events by Roadway and Detection Method

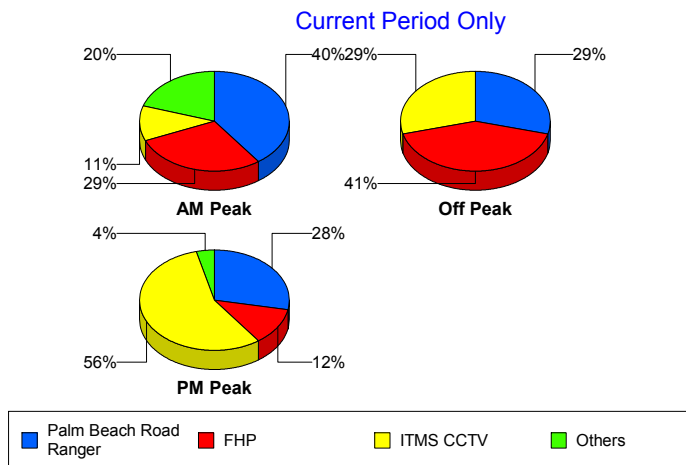


		Current Month	Last Month	YTD
SR 80	Total	0	0	1
Total		101	95	348

Incident Detection Methods by Peak Period

		Current Month	Last Month	YTD
AM Peak	Broward CCTV	1	0	1
	Broward Road Ranger	1	1	2
	District 4	3	0	5
	FHP	10	5	30
	ITMS	1	0	2
	ITMS CCTV	4	2	15
	Motorist	0	2	2
	Palm Beach Road Ran	14	15	42
	Road Watcher	0	1	1
	SmarTraveler (511)	1	0	2
	Total	35	26	102
Off Peak	Broward CCTV	0	1	4
	Broward Road Ranger	0	1	1
	District 4	0	2	2
	FHP	17	7	35
	I-95 Construction PIO	0	0	2
	ITMS	0	0	1
	ITMS CCTV	12	16	52
	Motorist	0	1	1
	Palm Beach Road Ran	12	12	50
	Total	41	40	148
PM Peak	FHP	3	6	20
	ITMS CCTV	14	9	38
	Local Police	1	0	1
	Motorist	0	1	3
	Palm Beach Road Ran	7	13	36
	Total	25	29	98

Total Events by Peak Period and Detection Method

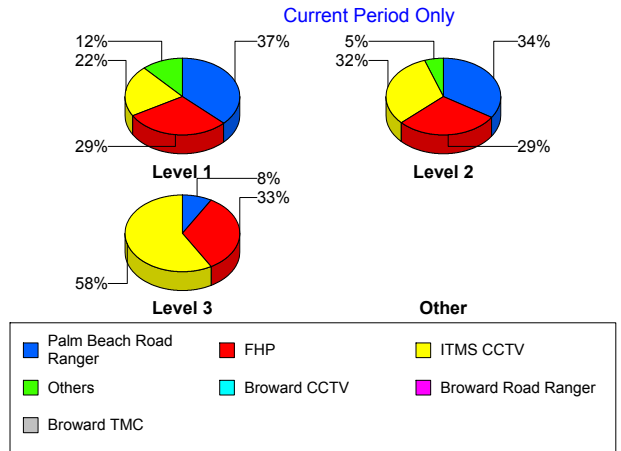


	Current Month	Last Month	YTD
Total	101	95	348

Incident Detection Methods by Severity

		Current Month	Last Month	YTD
Level 1	Broward CCTV	1	1	3
	Broward Road Ranger	1	1	2
	District 4	2	2	6
	FHP	15	10	39
	I-95 Construction PIO	0	0	1
	ITMS	1	0	1
	ITMS CCTV	11	12	44
	Local Police	1	0	1
	Motorist	0	2	4
	Palm Beach Road Ran	19	31	95
	Road Watcher	0	1	1
	SmarTraveler (511)	0	0	1
	Total	51	60	198
	Level 2	Broward Road Ranger	0	1
District 4		1	0	1
FHP		11	7	35
I-95 Construction PIO		0	0	1
ITMS		0	0	2
ITMS CCTV		12	11	42
Motorist		0	1	1
Palm Beach Road Ran		13	7	28
SmarTraveler (511)		1	0	1
Total		38	27	112
Level 3	Broward CCTV	0	0	2
	FHP	4	1	11
	ITMS CCTV	7	4	19
	Motorist	0	1	1
	Palm Beach Road Ran	1	2	5

Total Events by Severity and Detection Method



		Current Month	Last Month	YTD
Level 3	Total	12	8	38
Total		101	95	348

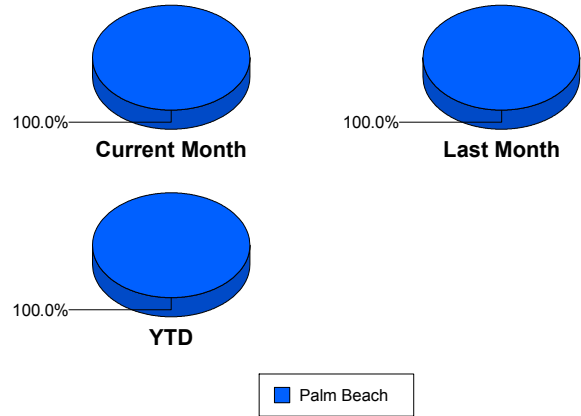
Road Ranger / SIRV Performance Measures

Road Ranger / SIRV Performance By County

Values presented are:
 - Total Events with a RR/SIRV Response
 - Total RR/SIRV Responses,
 - Total Activities Performed

	Current Mo	Last Month	YTD
Palm Beach	1,504	1,412	5,455
	1,549	1,453	5,641
	1,656	1,568	6,033

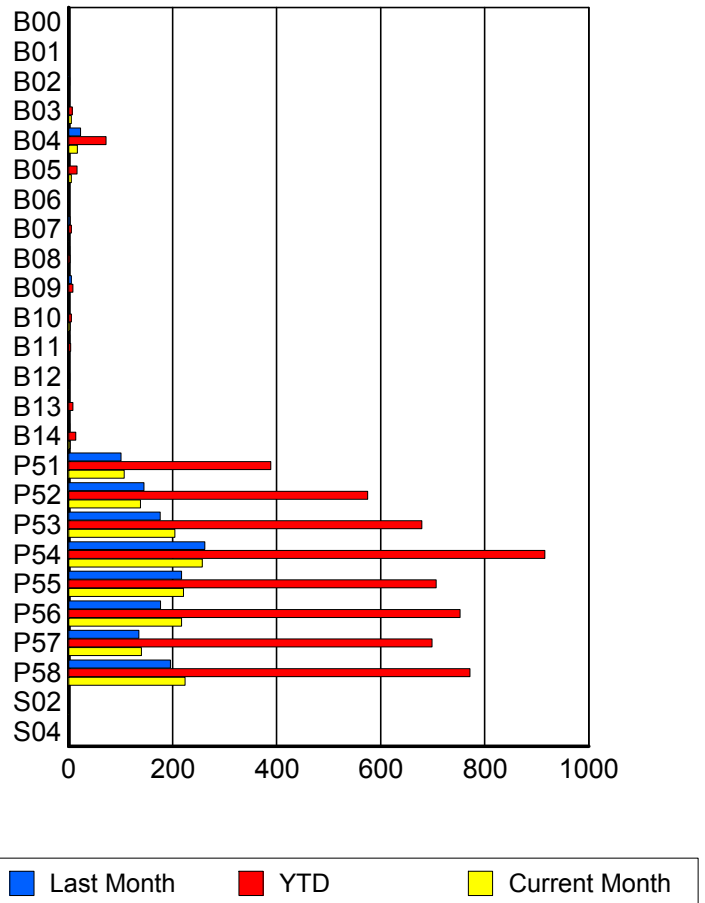
RR/SIRV Responses per County



Road Ranger / SIRV Performance By Truck

	Current Mo	Last Month	YTD
B00	0	1	1
	0	1	1
	0	1	1
B01	1	0	1
	1	0	1
	1	0	1
B02	1	1	2
	1	1	2
	1	1	2
B03	5	1	7
	5	1	7
	5	1	7
B04	17	22	71
	17	23	72
	20	25	81
B05	5	1	15
	5	1	16
	6	1	17
B06	0	1	1
	0	1	1
	0	1	1
B07	1	3	5
	1	3	5
	1	3	5
B08	1	2	3
	1	2	3
	1	2	3

RR/SIRV Responses per Truck



	Current Mo	Last Month	YTD
B09	0 0 0	5 5 5	8 8 8
B10	3 3 3	0 0 0	5 5 5
B11	1 1 1	2 2 2	4 4 4
B12	1 1 1	0 0 0	2 2 2
B13	1 1 2	1 1 1	8 8 9
B14	3 3 3	2 2 3	14 14 15
P51	105 107 114	101 101 103	385 389 409
P52	138 138 143	145 145 161	571 575 611
P53	201 204 216	174 176 197	670 679 730
P54	254 257 280	262 262 275	908 916 982
P55	218 221 231	216 217 238	700 707 753
P56	216 217 229	174 177 203	743 753 817
P57	139 140 153	135 135 143	696 699 755
P58	222 224 244	193 196 201	764 772 813
S02	1 1 1	0 0 0	1 1 1

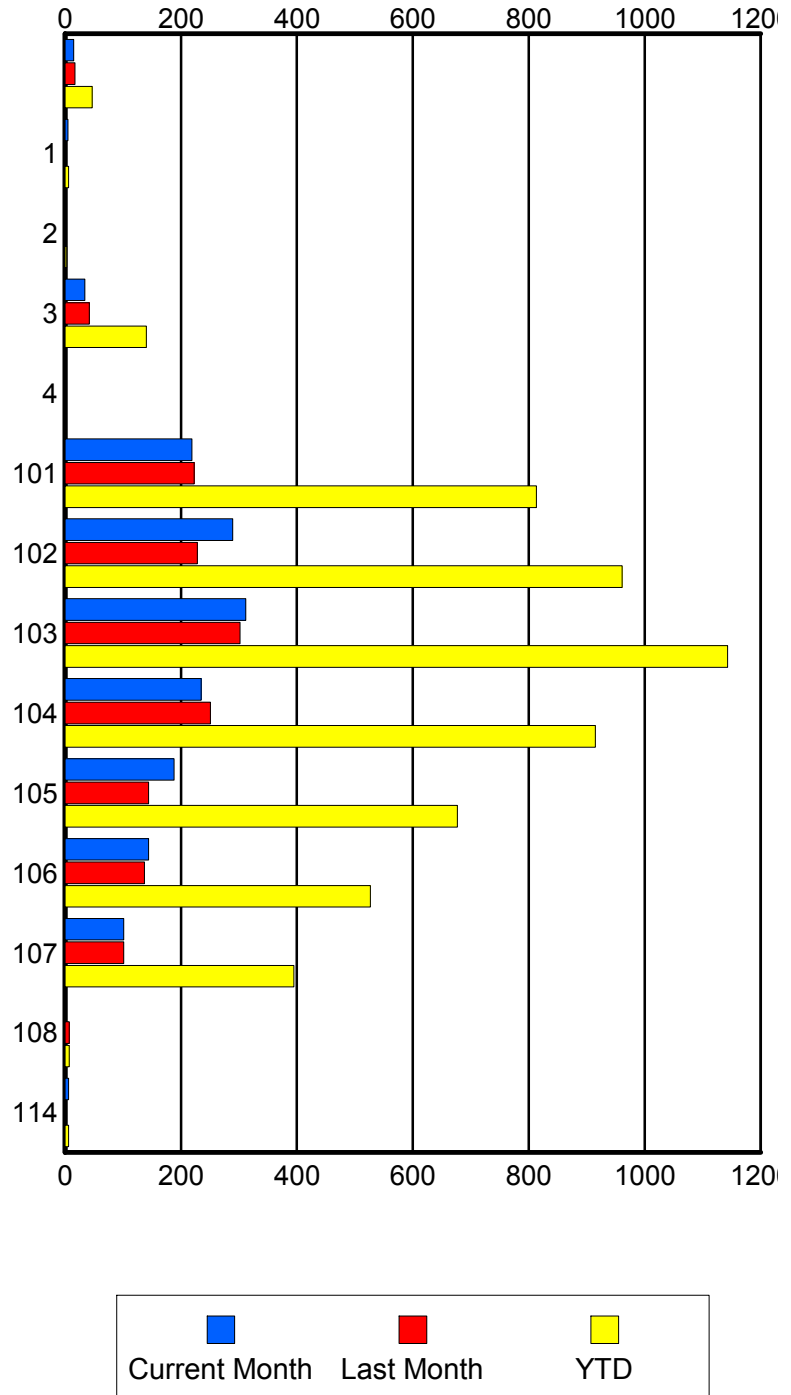
	Current Mo	Last Month	YTD
S04	0	1	1
	0	1	1
	0	1	1

Road Ranger / SIRV Performance By Beat

	Current Mo	Last Month	YTD
	15	17	47
	15	17	47
	15	17	47
1	5	1	6
	5	1	6
	6	1	7
2	0	0	3
	0	0	3
	0	0	4
3	34	41	138
	34	42	140
	38	45	150
4	1	0	1
	1	0	1
	1	0	1
101	215	220	803
	219	223	813
	231	256	881
102	286	226	952
	289	228	961
	310	235	1,017
103	308	302	1,130
	312	302	1,143
	338	324	1,234
104	235	250	908
	235	251	915
	251	279	985
105	186	143	672
	188	144	677
	201	151	719
106	144	136	520
	144	137	527
	153	150	563
107	99	101	391
	101	101	395
	106	103	412
108	0	6	6
	0	7	7
	0	7	7
114	6	0	6
	6	0	6
	6	0	6

Values presented are:
 - Total Events with a RR/SIRV Response
 - Total RR/SIRV Responses,
 - Total Activities Performed

RR/SIRV Responses per Beat

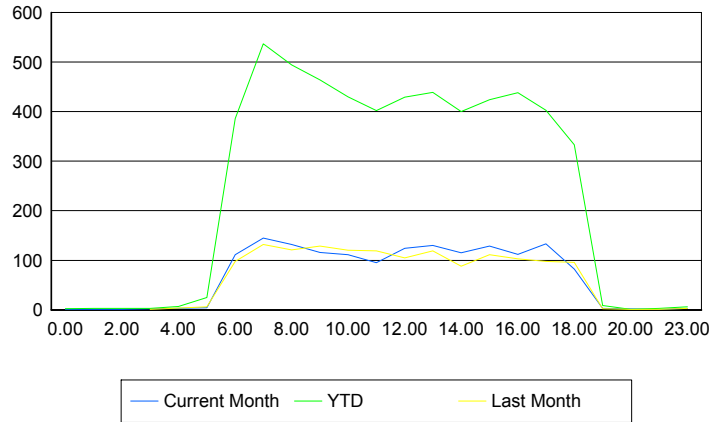


Road Ranger / SIRV Performance By Time of Day

Values presented are:
 - Total Events with a RR/SIRV Response
 - Total RR/SIRV Responses,
 - Total Activities Performed

	Current Mo	Last Month	YTD
12AM-1AM	1	0	2
	1	0	2
	1	0	2
1AM-2AM	1	0	3
	1	0	3
	1	0	3
2AM-3AM	1	0	3
	1	0	3
	1	0	3
3AM-4AM	0	1	3
	0	1	3
	0	1	3
4AM-5AM	0	0	4
	0	0	7
	0	0	8
5AM-6AM	4	6	23
	4	6	25
	4	6	25
6AM-7AM	108	97	372
	111	98	386
	115	105	407
7AM-8AM	143	126	516
	145	132	537
	154	136	574
8AM-9AM	129	115	475
	132	121	494
	138	134	528
9AM-10AM	112	125	450
	116	129	464
	128	144	515
10AM-11AM	106	118	415
	111	120	430
	116	132	459
11AM-12PM	94	113	389
	95	119	402
	106	132	441
12PM-1PM	119	102	416
	124	105	429
	132	117	459

Number of Responses / Hour of the Day



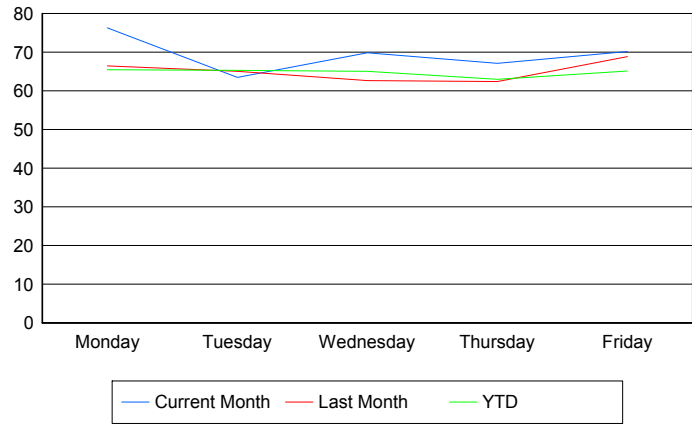
	Current Mo	Last Month	YTD
1PM-2PM	124	119	427
	130	119	439
	140	124	474
2PM-3PM	112	86	386
	115	88	400
	124	91	421
3PM-4PM	126	107	410
	129	111	424
	140	120	450
4PM-5PM	109	99	423
	112	103	438
	118	112	461
5PM-6PM	128	95	391
	133	98	403
	142	104	429
6PM-7PM	81	96	329
	82	96	333
	89	103	351
7PM-8PM	3	2	9
	3	2	9
	3	2	10
8PM-9PM	0	1	1
	0	1	1
	0	1	1
10PM-11PM	1	1	3
	1	1	3
	1	1	3
11PM-12AM	2	3	5
	3	3	6
	3	3	6

Road Ranger / SIRV Performance By Day of Week

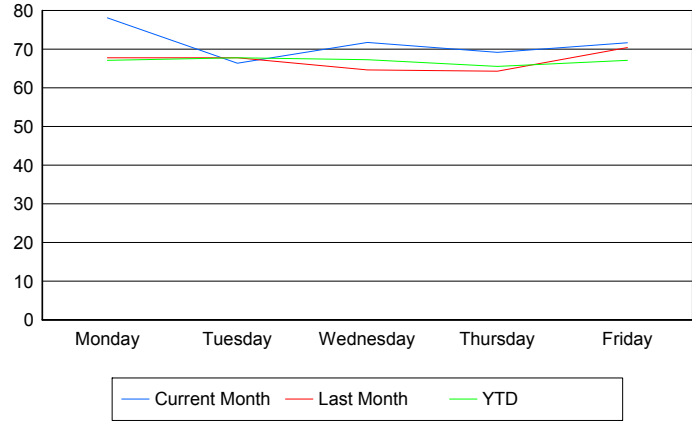
Values presented are:
 - Total Events with a RR/SIRV Response
 - Total RR/SIRV Responses,
 - Total Activities Performed

	Current Mo	Last Month	YTD
Monday	304	331	1,088
	311	337	1,115
	327	358	1,179
Tuesday	250	318	1,087
	262	331	1,128
	279	360	1,205
Wednesday	346	248	1,092
	356	256	1,129
	383	274	1,212
Thursday	329	248	1,107
	339	255	1,153
	367	277	1,241
Friday	275	267	1,083
	281	274	1,116
	300	299	1,196

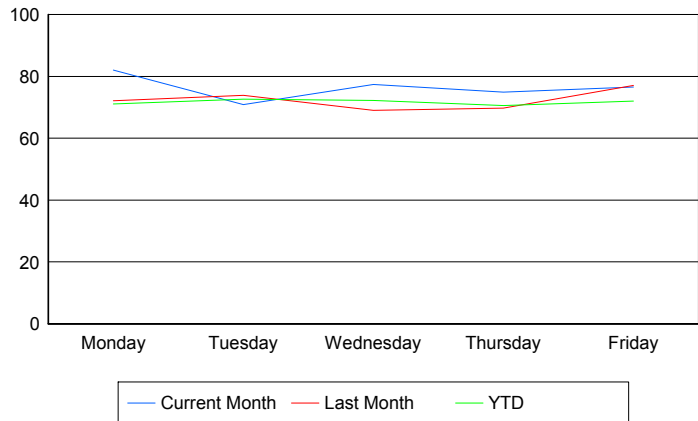
Avg # of events with a RR/SIRV Response per Day of the Week



Avg # of RR/SIRV Responses per Day of the Week



Avg # of RR/SIRV Activities Performed per Day of the Week



Road Ranger / SIRV Responses per Time of Day and Day of Week

