



# Monthly Performance Measures Report Palm Beach County



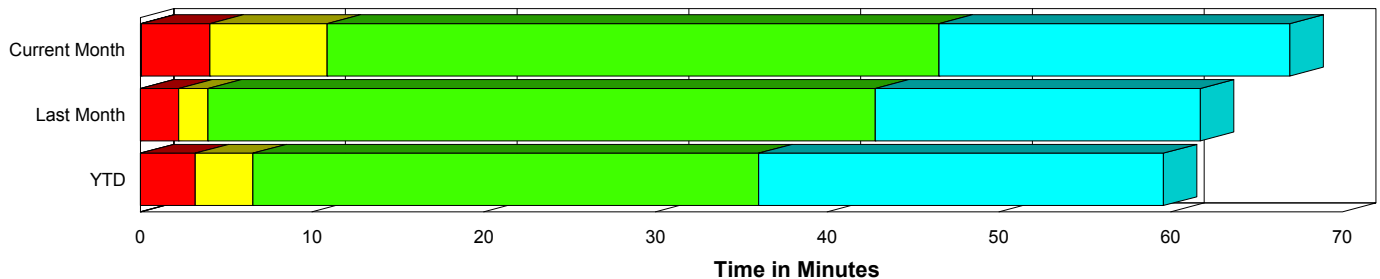
Created on:  
June 02, 2009  
8:52 am

Period From May 1, 2009 to May 31, 2009

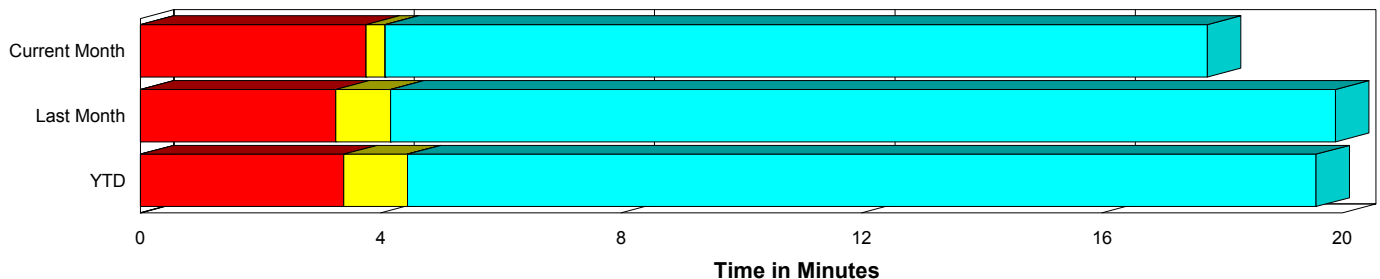
## Performance Measures Summary

	Traffic Events (No Lanes Blocked)			Incidents (Lanes Blocked)		
	<u>This Month</u>	<u>Last Month</u>	<u>YTD</u>	<u>This Month</u>	<u>Last Month</u>	<u>YTD</u>
Number of Events	1,230	1,252	6,085	90	101	438
TMC Detection (min.)	0.00	0.00	0.00	0.07	0.00	0.02
TMC Verification (min.)	3.75	3.25	3.38	3.99	2.23	3.19
TMC Response (min.)	4.73	4.80	5.31	12.21	4.76	7.31
RR Dispatch Time (min.)	1.24	1.31	1.70	5.83	1.44	3.10
RR Response Time (min.)	3.51	3.50	3.65	6.35	3.32	4.21
Roadway Clearance (min.)				104.99	44.96	51.51
Event Clearance (min.)	18.42	20.52	20.42	123.58	63.65	74.52
# of Events w/ RR/SIRV	1,052	1,075	4,952	60	71	338
RR/SIRV Responses	1,052	1,075	4,952	60	71	338
RR/SIRV Activities	1,138	1,173	5,369	86	104	500

### Incident Clearance Time-Line



### Traffic Event (Non-Lane Blockage) Time-Line



<span style="color: blue;">■</span> Avg. TMC Detection Time	<span style="color: green;">■</span> Avg. Time from TMC Response to Roadway Clearance*
<span style="color: red;">■</span> Avg. Time from TMC Detection to TMC Verification	<span style="color: cyan;">■</span> Avg. Time from Roadway Clearance to Incident/Event Clearance**
<span style="color: yellow;">■</span> Avg. Time from TMC Verification to TMC Response	

\* Roadway clearance equals all travel lanes open

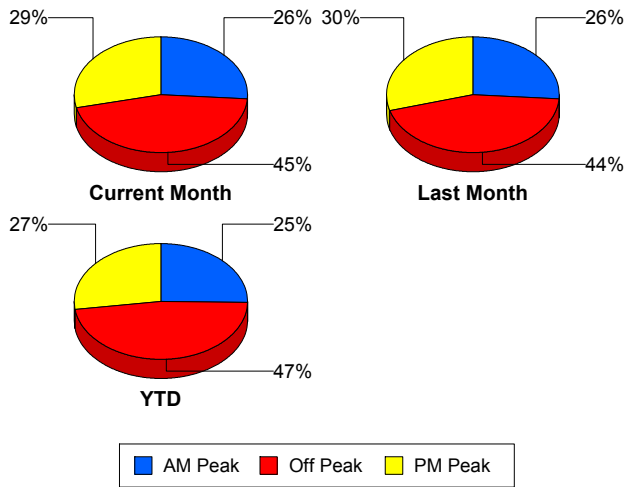
\*\* Incident clearance equals time when last responder has left the scene

## Performance Measures by Peak Period

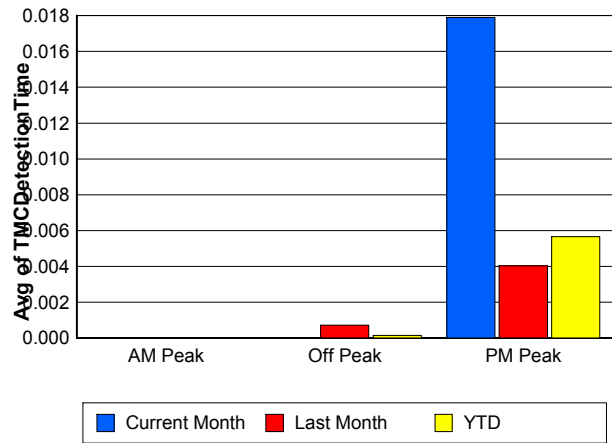
Note: AM peak period is defined as 6am to 10am and PM peak period is defined as 3pm to 7pm.

	AM Peak			Off Peak			PM Peak		
	<u>Current Month</u>	<u>Last Month</u>	<u>YTD</u>	<u>Current Month</u>	<u>Last Month</u>	<u>YTD</u>	<u>Current Month</u>	<u>Last Month</u>	<u>YTD</u>
Number of Events	344	352	1,647	598	601	3,097	378	400	1,779
Number of Incidents	36	35	138	31	41	179	23	25	121
TMC Detection (min.)	0.00	0.00	0.00	0.00	0.00	0.00	0.02	0.00	0.01
TMC Verification (min.)	4.11	2.85	3.18	3.48	2.93	2.94	3.91	3.82	4.29
TMC Response (min.)	5.18	4.11	4.38	5.72	5.37	6.45	4.38	4.75	5.17
RR Dispatch Time (min.)	1.37	0.86	1.10	1.95	1.96	2.69	1.02	0.99	1.29
RR Response Time (min.)	3.82	3.26	3.33	3.79	3.42	3.79	3.36	3.77	3.88
Event Clearance (min.)	25.60	22.55	22.33	21.94	27.90	26.01	31.35	18.54	22.25
Roadway Clearance (min.)	46.23	33.31	38.95	58.11	56.52	45.78	260.16	42.33	74.29
Incident Clearance (min.)	72.92	55.88	63.28	69.62	74.22	71.41	275.61	57.19	91.92
# of Events w/ RR/SIRV	321	340	1,559	439	436	2,080	352	370	1,651
RR/SIRV Responses	321	340	1,559	439	436	2,080	352	370	1,651
RR/SIRV Activities	370	374	1,780	473	491	2,294	381	412	1,795

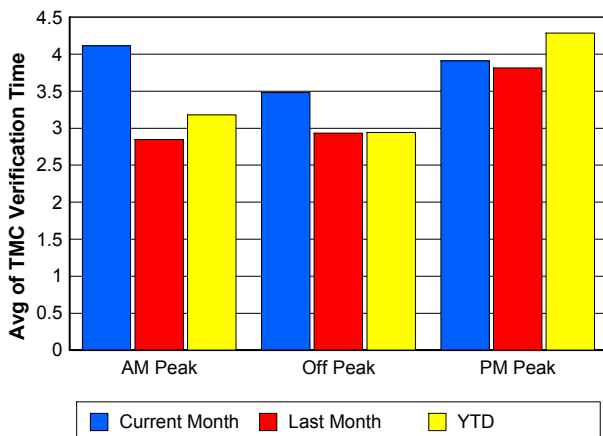
### Number of Events / Peak Period



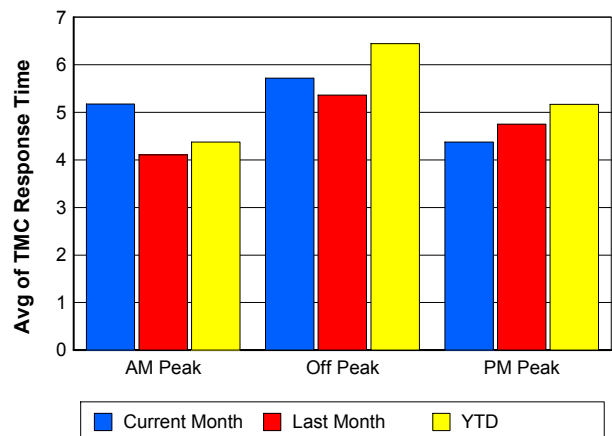
### TMC Detection Time



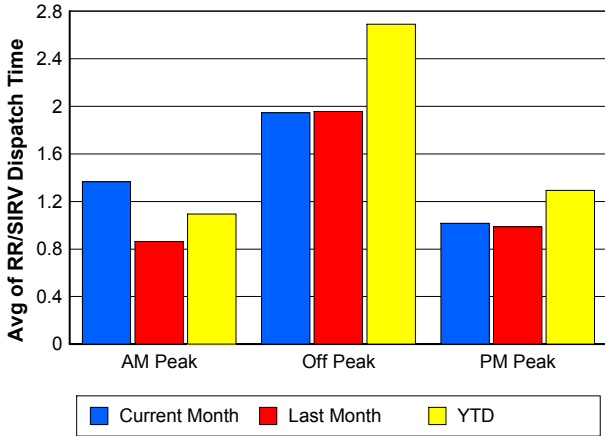
### TMC Verification Time



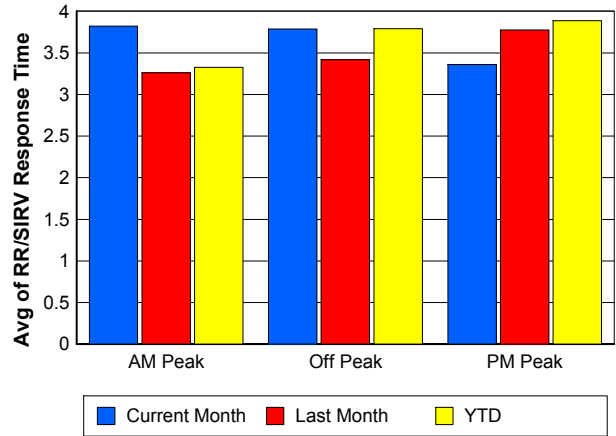
### TMC Response Time



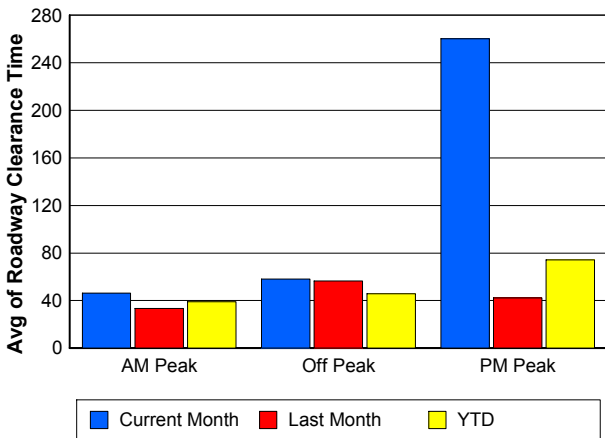
## Road Ranger / SIRV Dispatch Time



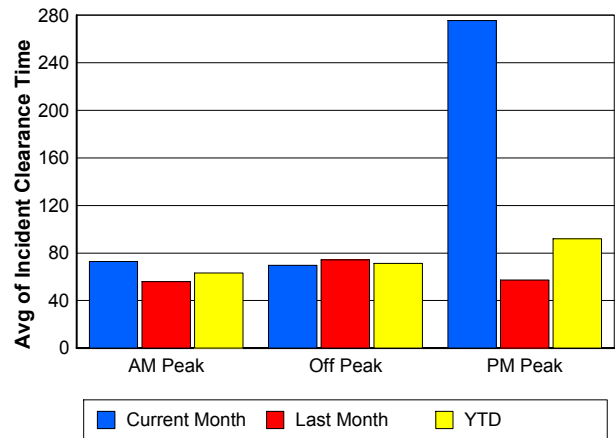
## Road Ranger / SIRV Response Time



## Roadway Clearance Time (2A)



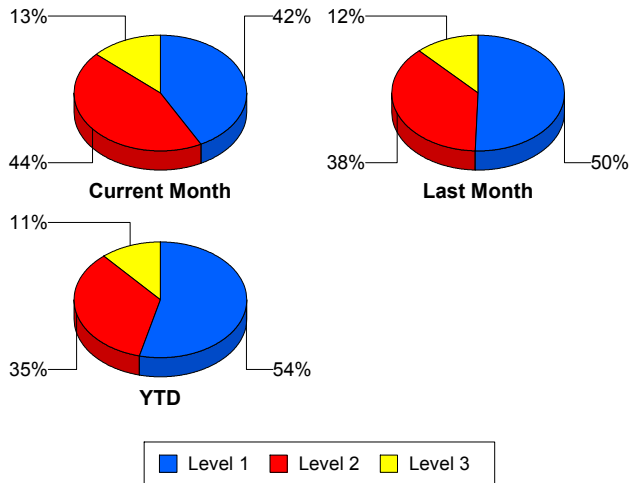
## Incident Clearance Time (3B)



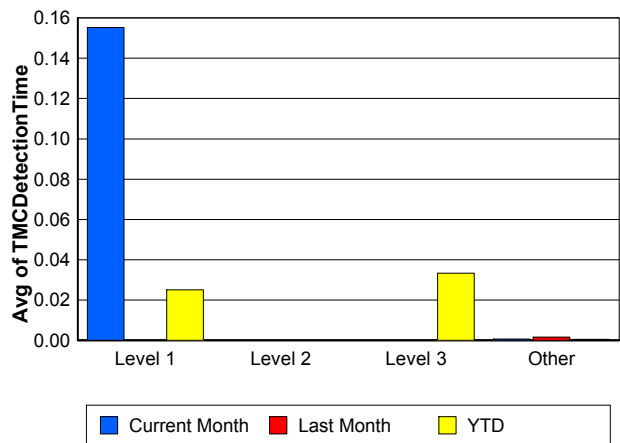
## Performance Measures by Severity

	Level 1			Level 2			Level 3			Other		
	<u>This Month</u>	<u>Last Month</u>	<u>YTD</u>	<u>This Month</u>	<u>Last Month</u>	<u>YTD</u>	<u>This Month</u>	<u>Last Month</u>	<u>YTD</u>	<u>This Month</u>	<u>Last Month</u>	<u>YTD</u>
Number of Events	38	51	236	40	38	152	12	12	50	1,230	1,252	6,085
Number of Incidents	38	51	236	40	38	152	12	12	50	0	0	0
TMC Detection (min.)	0.16	0.00	0.02	0.00	0.00	0.00	0.00	0.00	0.03	0.00	0.00	0.00
TMC Verification (min.)	4.55	2.26	2.37	3.35	2.53	3.86	4.37	1.14	5.06	3.75	3.25	3.38
TMC Response (min.)	7.52	4.33	4.22	8.53	5.86	8.45	39.21	3.94	21.82	4.73	4.80	5.31
RR Dispatch Time (min.)	1.61	1.12	1.07	2.29	2.08	2.81	31.25	1.34	15.98	1.24	1.31	1.70
RR Resp. Time (min.)	5.99	3.21	3.18	6.24	3.78	5.65	7.96	2.59	5.84	3.51	3.50	3.65
Event Clearance (min.)	42.91	33.84	40.11	76.80	75.02	76.13	535.00	154.33	231.99	18.42	20.52	20.42
Roadway Clear. (min.)	16.97	14.64	14.61	58.89	54.73	54.16	537.38	142.91	217.61			
Incident Clearance (min.)	42.91	33.84	40.11	76.80	75.02	76.13	535.00	154.33	231.99			
# of Events w/ RR/SIRV	29	41	200	23	22	104	8	8	34	1,052	1,075	4,952
RR/SIRV Responses	29	41	200	23	22	104	8	8	34	1,052	1,075	4,952
RR/SIRV Activities	39	55	264	34	33	175	13	16	61	1,138	1,173	5,369

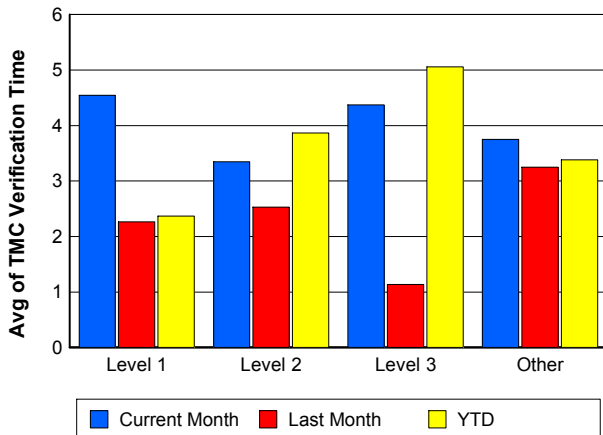
### Number of Events / Severity



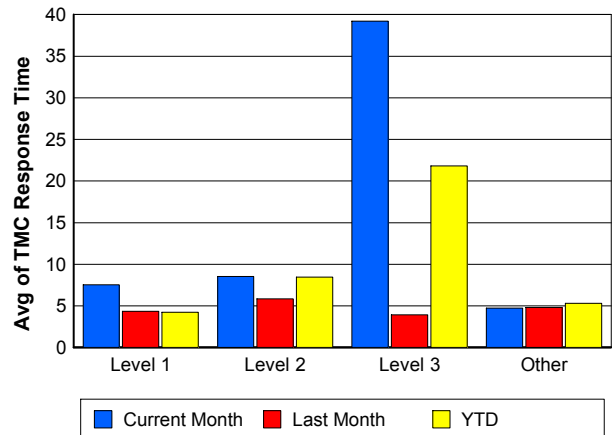
### TMC Detection Time



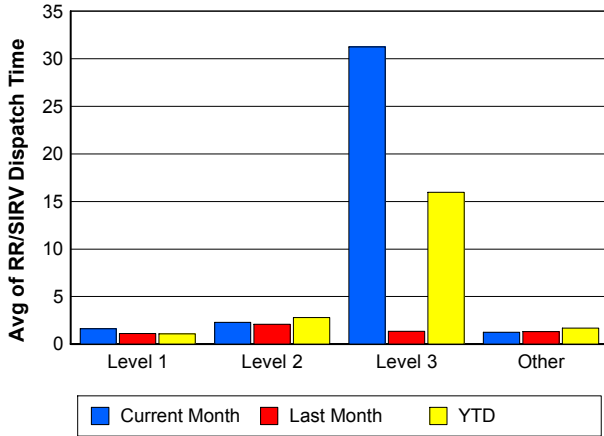
### TMC Verification Time



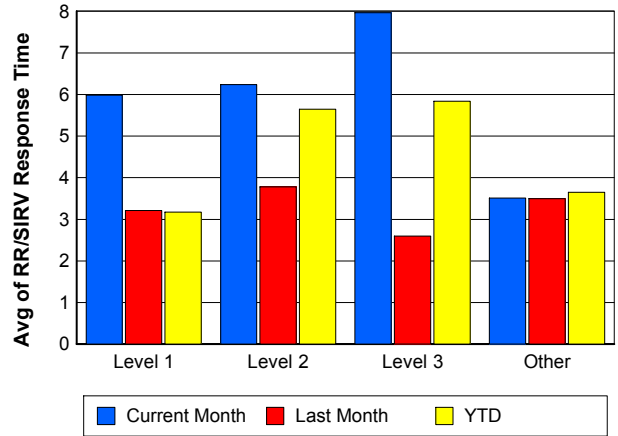
### TMC Response Time



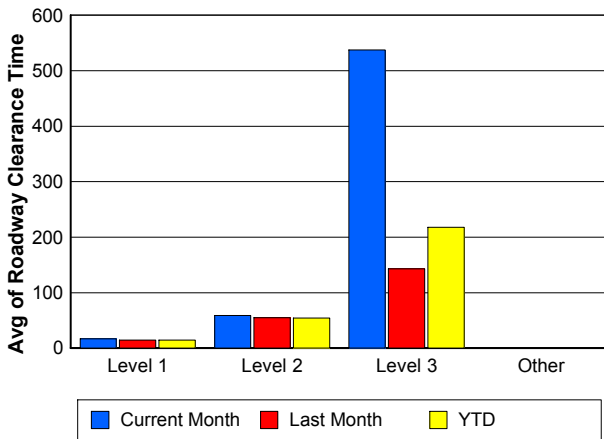
## Road Ranger / SIRV Dispatch Time



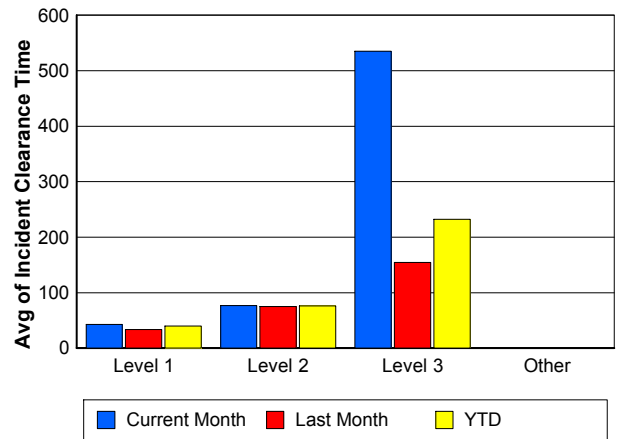
## Road Ranger / SIRV Response Time



## Roadway Clearance Time (2A)



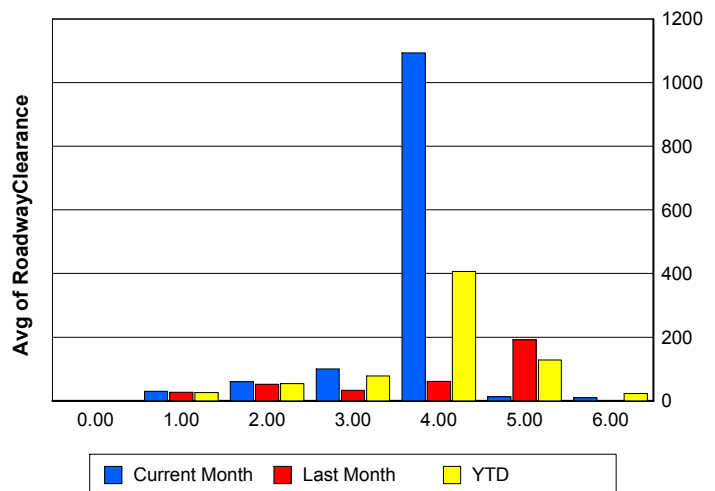
## Incident Clearance Time (3B)



## Roadway Clearance by Maximum Number of Lanes Blocked

	Current Month	Last Month	YTD
0			
1	29.49	26.77	25.39
2	59.87	51.56	54.25
3	99.66	32.40	78.47
4	1,093.67	61.38	406.12
5	12.75	191.32	128.32
6	9.83	0.00	22.35

## Roadway Clearance Time (2A)



## Performance Measures by Roadway

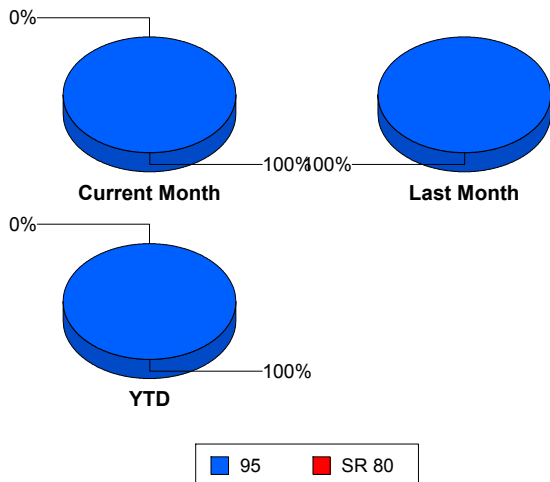
95

	<u>Current Month</u>	<u>Last Month</u>	<u>YTD</u>
Number of Events	1,319	1,353	6,520
Number of Incidents	89	101	436
TMC Detection (min.)	0.01	0.00	0.00
TMC Verification (min.)	3.77	3.17	3.37
TMC Response (min.)	5.13	4.80	5.44
RR Dispatch Time (min.)	1.48	1.32	1.79
RR Resp. Time (min.)	3.66	3.49	3.68
Event Clearance (min.)	21.59	23.74	23.23
Roadway Clear. (min.)	46.69	44.96	39.52
Incident Clearance (min.)	65.44	63.65	62.61
# of Events w/ RR/SIRV	1,112	1,146	5,290
RR/SIRV Responses	1,112	1,146	5,290
RR/SIRV Activities	1,224	1,277	5,869

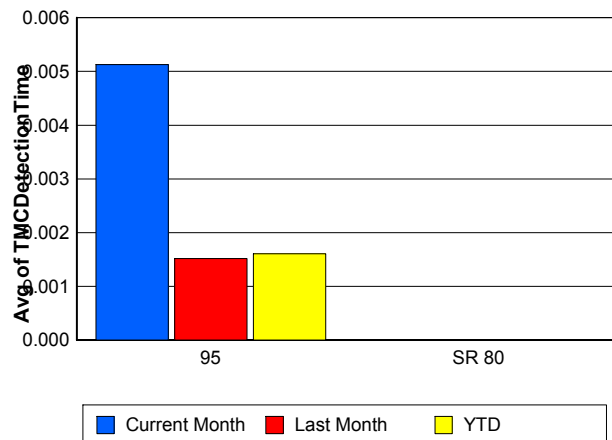
SR 80

	<u>Current Month</u>	<u>YTD</u>
Number of Events	1	3
Number of Incidents	1	2
TMC Detection (min.)	0.00	0.00
TMC Verification (min.)	0.00	0.00
TMC Response (min.)		
RR Dispatch Time (min.)		
RR Resp. Time (min.)		
Event Clearance (min.)	5,298.37	1,813.57
Roadway Clear. (min.)	5,293.37	2,663.80
Incident Clearance (min.)	5,298.37	2,671.02
# of Events w/ RR/SIRV	0	0
RR/SIRV Responses	0	0
RR/SIRV Activities	0	0

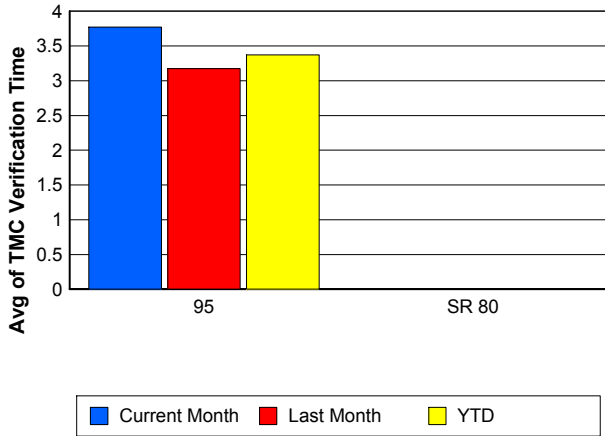
### Number of Events / Roadway



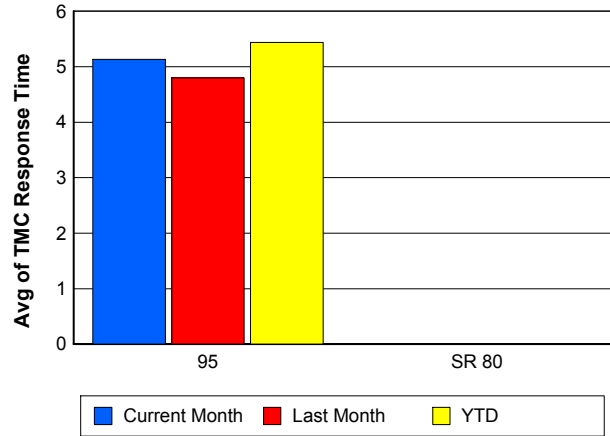
### TMC Detection Time



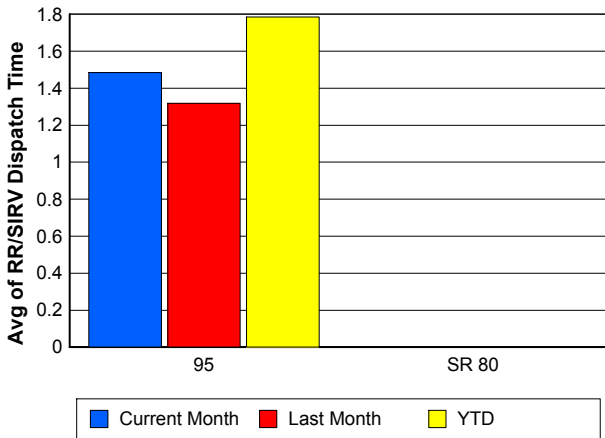
### TMC Verification Time



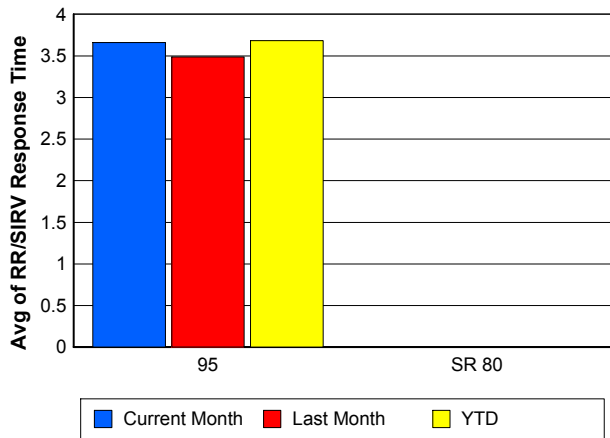
### TMC Response Time



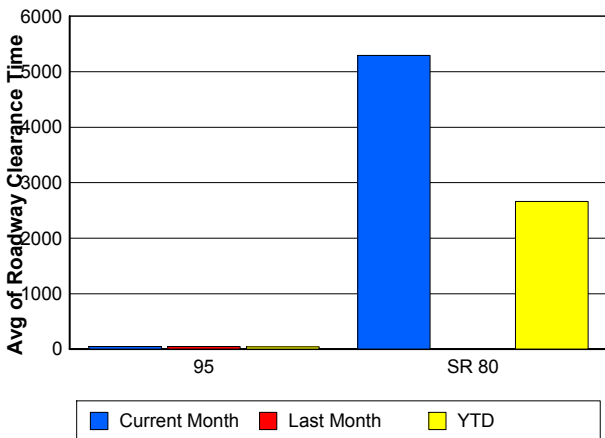
### Road Ranger / SIRV Dispatch Time



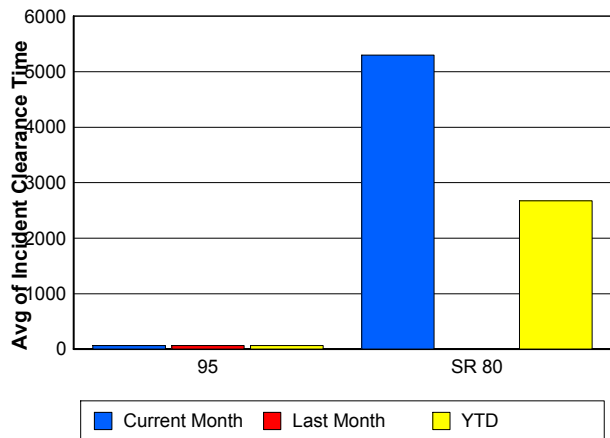
### Road Ranger / SIRV Response Time



### Roadway Clearance Time (2A)



### Incident Clearance Time (3B)



## Performance Measures by Event Type

### Accident

	<u>Current Month</u>	<u>Last Month</u>	<u>YTD</u>
Number of Events	126	140	597
Number of Incidents	65	68	284
TMC Detection (min.)	0.01	0.01	0.01
TMC Verification (min.)	3.89	2.85	3.71
TMC Response (min.)	11.03	6.00	7.59
RR Dispatch Time (min.)	5.14	1.53	2.70
RR Response Time (min.)	5.90	4.47	4.88
Event Clearance (min.)	59.24	62.67	58.38
Roadway Clearance (min.)	49.95	53.34	45.09
Incident Clearance (min.)	71.96	77.29	72.43
# of Events w/ RR/SIRV	86	105	467
RR/SIRV Assists	86	105	467
RR/SIRV Activities	108	133	607

### Debris on Roadway

	<u>Current Month</u>	<u>Last Month</u>	<u>YTD</u>
Number of Events	93	102	462
Number of Incidents	2	5	20
TMC Detection (min.)	0.00	0.00	0.00
TMC Verification (min.)	7.86	8.74	8.43
TMC Response (min.)	7.97	9.29	8.86
RR Dispatch Time (min.)	2.27	1.28	1.84
RR Response Time (min.)	5.70	8.01	7.03
Event Clearance (min.)	11.24	13.38	12.55
Roadway Clearance (min.)	24.94	10.01	14.56
Incident Clearance (min.)	42.36	16.68	18.76
# of Events w/ RR/SIRV	90	100	455
RR/SIRV Assists	90	100	455
RR/SIRV Activities	102	111	491

### Disabled Vehicle

	<u>Current Month</u>	<u>Last Month</u>	<u>YTD</u>
Number of Events	984	985	4,600
Number of Incidents	13	22	92
TMC Detection (min.)	0.00	0.00	0.00
TMC Verification (min.)	3.59	2.88	3.28
TMC Response (min.)	4.16	3.95	4.44
RR Dispatch Time (min.)	1.05	1.31	1.40
RR Response Time (min.)	3.12	2.65	3.09
Event Clearance (min.)	16.73	17.87	17.91
Roadway Clearance (min.)	21.08	22.36	21.39
Incident Clearance (min.)	29.06	29.46	32.06
# of Events w/ RR/SIRV	907	908	4,191
RR/SIRV Assists	907	908	4,191
RR/SIRV Activities	983	1,002	4,601

## Emergency Vehicles

	<u>Current Month</u>	<u>YTD</u>
Number of Events	4	10
Number of Incidents	1	4
TMC Detection (min.)	0.00	0.00
TMC Verification (min.)	3.46	1.38
TMC Response (min.)	13.82	9.08
RR Dispatch Time (min.)	2.60	4.65
RR Response Time (min.)	11.22	4.43
Event Clearance (min.)	58.46	42.39
Roadway Clearance (min.)	16.28	30.30
Incident Clearance (min.)	20.00	35.06
# of Events w/ RR/SIRV	1	4
RR/SIRV Assists	1	4
RR/SIRV Activities	2	6

## Other

	<u>Current Month</u>	<u>Last Month</u>	<u>YTD</u>
Number of Events	67	70	525
Number of Incidents	0	0	6
TMC Detection (min.)	0.00	0.00	0.00
TMC Verification (min.)	2.93	2.29	1.25
TMC Response (min.)	13.01	14.28	21.40
RR Dispatch Time (min.)	2.57	1.35	11.20
RR Response Time (min.)	10.33	12.98	8.22
Event Clearance (min.)	27.28	42.46	38.10
Roadway Clearance (min.)			38.11
Incident Clearance (min.)			52.15
# of Events w/ RR/SIRV	16	24	114
RR/SIRV Assists	16	24	114
RR/SIRV Activities	16	22	99

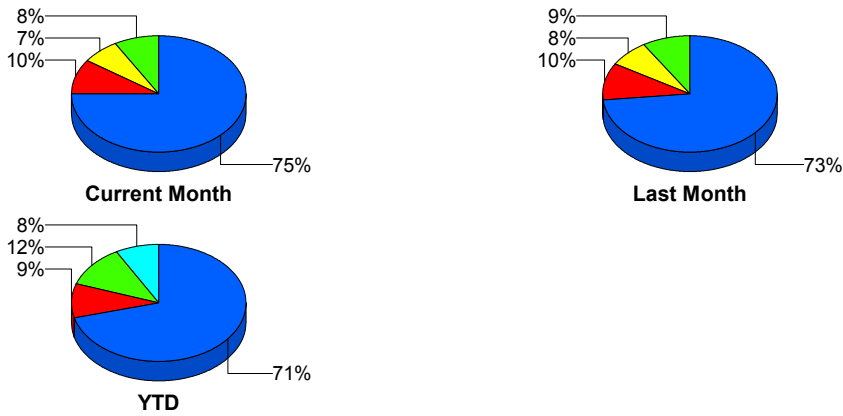
## Police Activity

	<u>Current Month</u>	<u>Last Month</u>	<u>YTD</u>
Number of Events	34	46	277
Number of Incidents	6	6	24
TMC Detection (min.)	0.17	0.00	0.02
TMC Verification (min.)	0.44	0.00	0.17
TMC Response (min.)	6.35	5.52	10.34
RR Dispatch Time (min.)	0.50	1.34	6.64
RR Response Time (min.)	5.85	4.18	3.70
Event Clearance (min.)	32.53	27.58	24.76
Roadway Clearance (min.)	83.21	62.05	65.70
Incident Clearance (min.)	93.66	73.59	101.73
# of Events w/ RR/SIRV	4	3	22
RR/SIRV Assists	4	3	22
RR/SIRV Activities	5	3	25

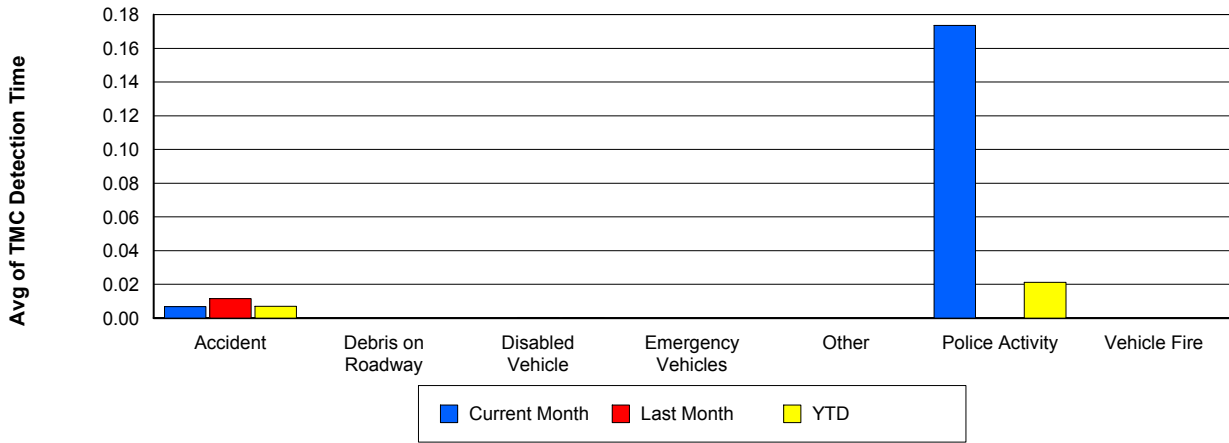
## Vehicle Fire

	<u>Current Month</u>	<u>Last Month</u>	<u>YTD</u>
Number of Events	3	2	11
Number of Incidents	2	0	7
TMC Detection (min.)	0.00	0.00	0.00
TMC Verification (min.)	0.00	8.22	2.37
TMC Response (min.)		16.45	7.49
RR Dispatch Time (min.)		0.75	1.24
RR Response Time (min.)		15.70	6.25
Event Clearance (min.)	82.96	32.38	71.00
Roadway Clearance (min.)	34.74		39.19
Incident Clearance (min.)	51.06		78.54
# of Events w/ RR/SIRV	0	1	5
RR/SIRV Assists	0	1	5
RR/SIRV Activities	0	1	7

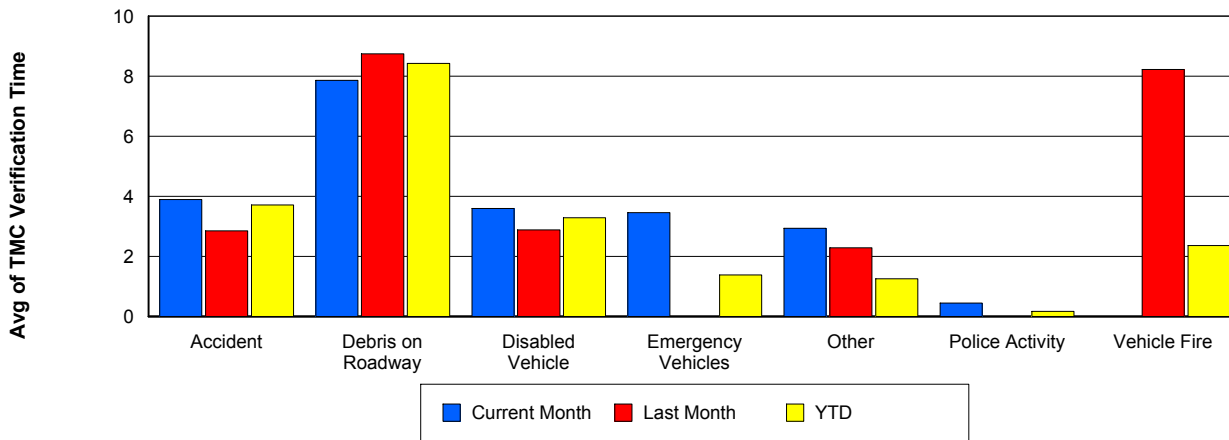
## Number of Events / Event Type



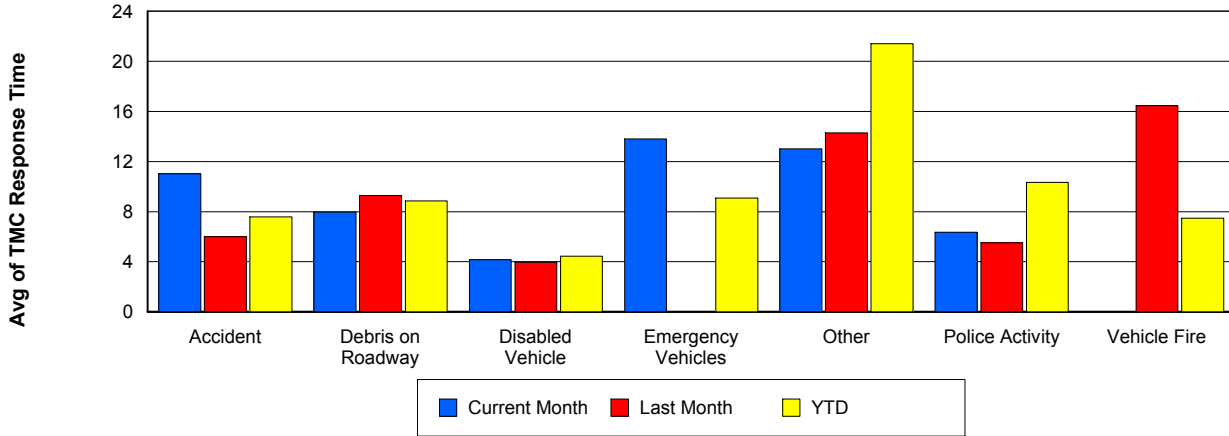
## TMC Detection Time



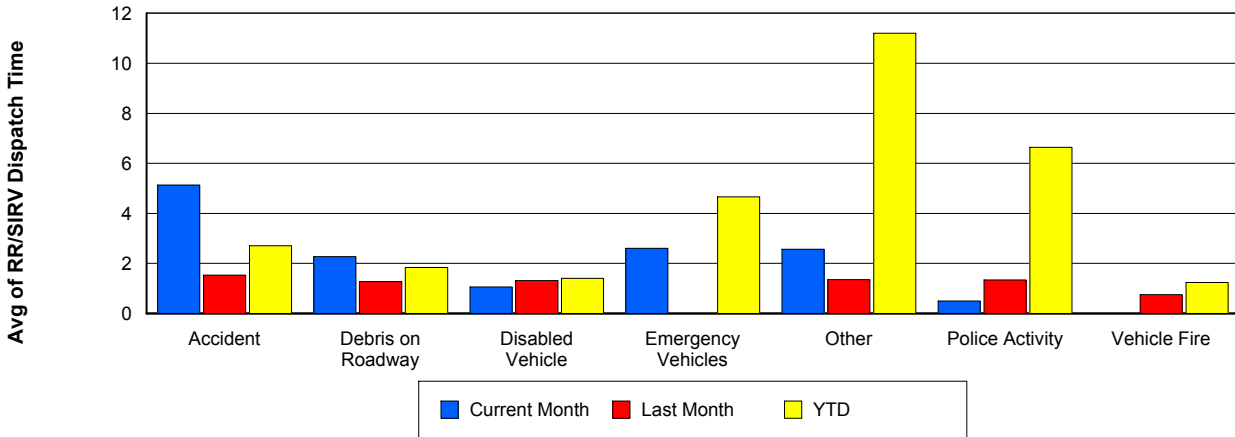
## TMC Verification Time



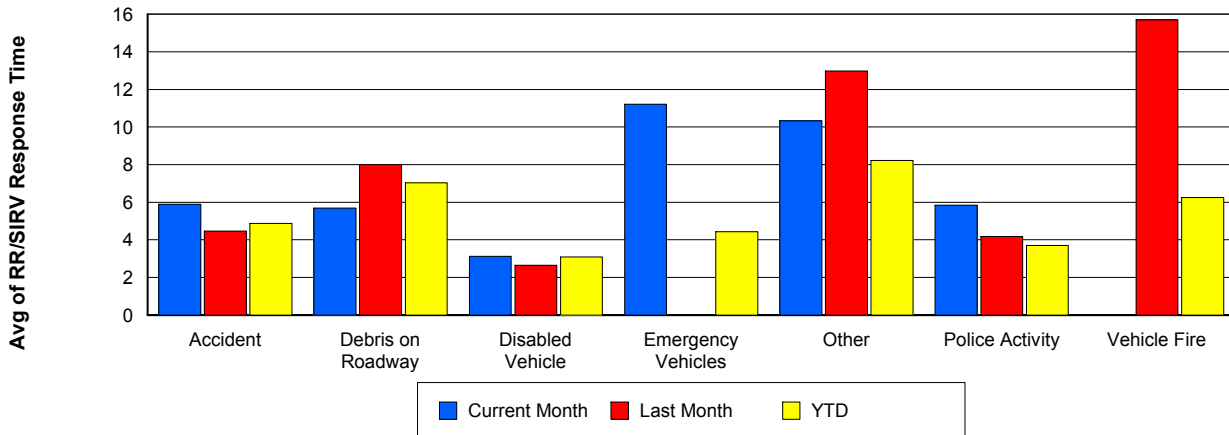
## TMC Response Time



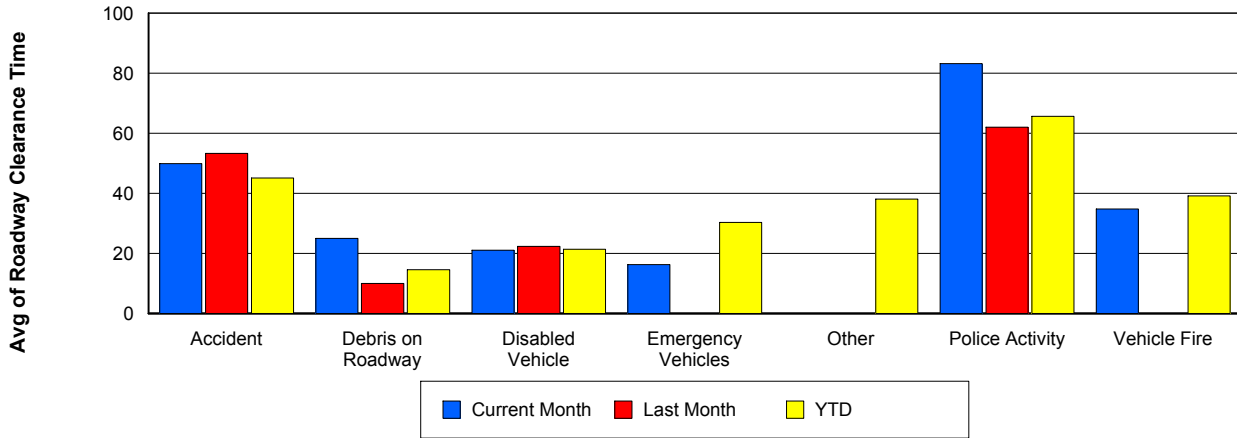
## Road Ranger / SIRV Dispatch Time



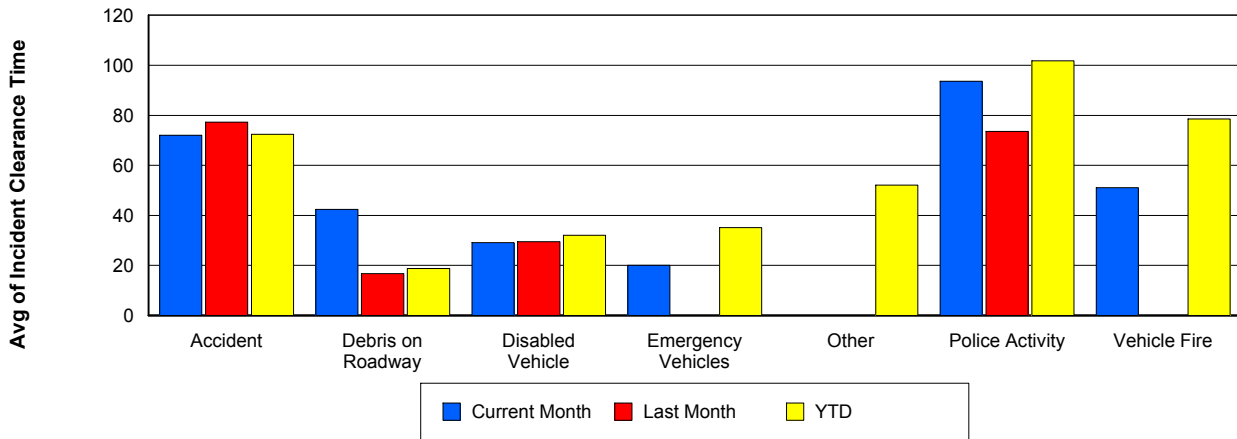
## Road Ranger / SIRV Response Time



## Roadway Clearance Time (2A)



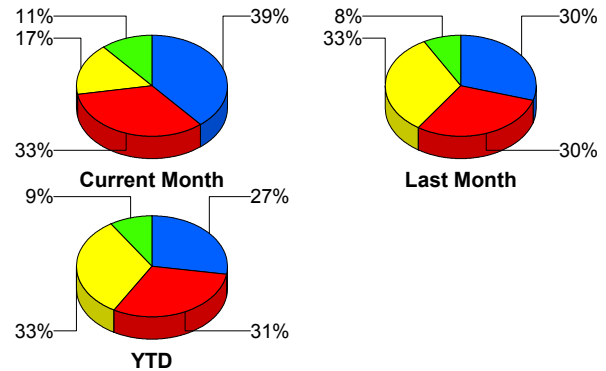
## Incident Clearance Time (3B)



## Incident Detection Methods

	Current Month	Last Month	YTD
Broward CCTV	0	1	5
Broward Road Ranger	2	1	5
District 4	2	3	9
Emergency Operations	1	0	1
FHP	35	30	120
I-95 Construction PIO	0	0	2
ITMS	0	1	3
ITMS CCTV	30	30	135
Local Police	0	1	1
Motorist	3	0	9
Palm Beach Road Ran	15	33	143
Road Watcher	0	0	1
SmarTraveler (511)	2	1	4
<b>Total</b>	<b>90</b>	<b>101</b>	<b>438</b>

### Total Incidents by Detection Method

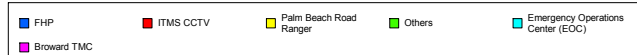
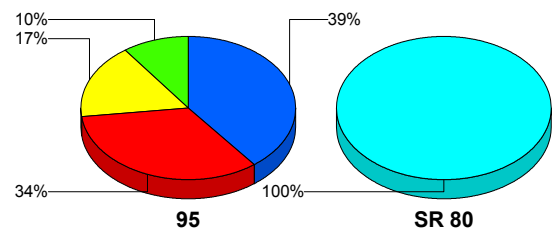


## Incident Detection Methods by Roadway

		Current Month	Last Month	YTD
95	Broward CCTV	0	1	5
	Broward Road Ranger	2	1	5
	District 4	2	3	9
	FHP	35	30	119
	I-95 Construction PIO	0	0	2
	ITMS	0	1	3
	ITMS CCTV	30	30	135
	Local Police	0	1	1
	Motorist	3	0	9
	Palm Beach Road Ran	15	33	143
	Road Watcher	0	0	1
	SmarTraveler (511)	2	1	4
	<b>Total</b>	<b>89</b>	<b>101</b>	<b>436</b>

### Total Events by Roadway and Detection Method

Current Period Only

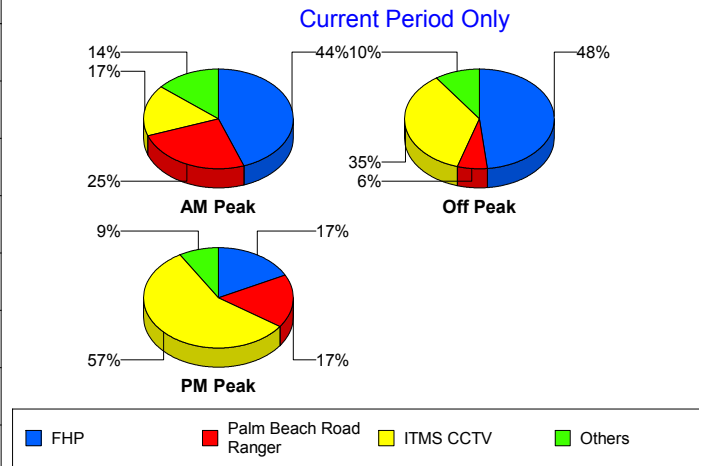


		Current Month	Last Month	YTD
SR 80	Emergency Operations	1	0	1
	FHP	0	0	1
	Total	1	0	2
Total		90	101	438

### Incident Detection Methods by Peak Period

		Current Month	Last Month	YTD
AM Peak	Broward CCTV	0	1	1
	Broward Road Ranger	1	1	3
	District 4	1	3	6
	FHP	16	10	46
	ITMS	0	1	2
	ITMS CCTV	6	4	21
	Motorist	2	0	4
	Palm Beach Road Ran	9	14	51
	Road Watcher	0	0	1
	SmarTraveler (511)	1	1	3
	Total	36	35	138
Off Peak	Broward CCTV	0	0	4
	Broward Road Ranger	0	0	1
	District 4	1	0	3
	FHP	15	17	50
	I-95 Construction PIO	0	0	2
	ITMS	0	0	1
	ITMS CCTV	11	12	63
	Motorist	1	0	2
	Palm Beach Road Ran	2	12	52
	SmarTraveler (511)	1	0	1
	Total	31	41	179
PM Peak	Broward Road Ranger	1	0	1
	Emergency Operations	1	0	1
	FHP	4	3	24

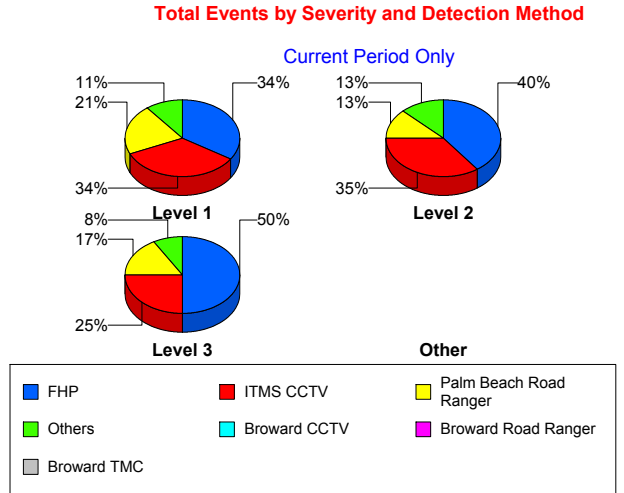
**Total Events by Peak Period and Detection Method**



		Current Month	Last Month	YTD
PM Peak	ITMS CCTV	13	14	51
	Local Police	0	1	1
	Motorist	0	0	3
	Palm Beach Road Ran	4	7	40
	Total	23	25	121
Total		90	101	438

### Incident Detection Methods by Severity

		Current Month	Last Month	YTD
Level 1	Broward CCTV	0	1	3
	Broward Road Ranger	1	1	3
	District 4	1	2	7
	FHP	13	15	52
	I-95 Construction PIO	0	0	1
	ITMS	0	1	1
	ITMS CCTV	13	11	57
	Local Police	0	1	1
	Motorist	2	0	6
	Palm Beach Road Ran	8	19	103
	Road Watcher	0	0	1
	SmarTraveler (511)	0	0	1
	Total	38	51	236
	Level 2	Broward Road Ranger	1	0
District 4		1	1	2
FHP		16	11	51
I-95 Construction PIO		0	0	1
ITMS		0	0	2
ITMS CCTV		14	12	56
Motorist		1	0	2
Palm Beach Road Ran		5	13	33
SmarTraveler (511)		2	1	3
Total		40	38	152



		Current Month	Last Month	YTD
Level 3	Broward CCTV	0	0	2
	Emergency Operations	1	0	1
	FHP	6	4	17
	ITMS CCTV	3	7	22
	Motorist	0	0	1
	Palm Beach Road Ran	2	1	7
	Total	12	12	50
Total		90	101	438

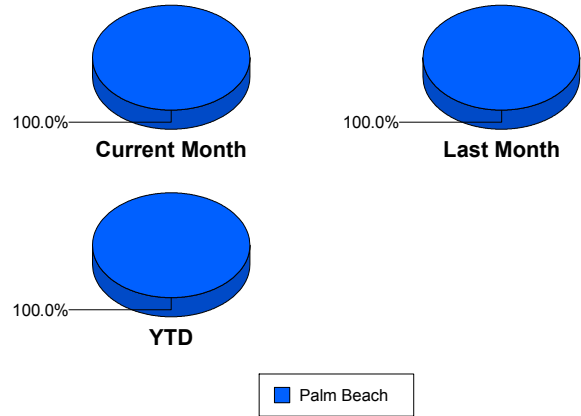
# Road Ranger / SIRV Performance Measures

## Road Ranger / SIRV Performance By County

Values presented are:  
 - Total Events with a RR/SIRV Response  
 - Total RR/SIRV Responses,  
 - Total Activities Performed

	Current Mo	Last Month	YTD
Palm Beach	1,441	1,504	6,896
	1,487	1,549	7,128
	1,576	1,656	7,609

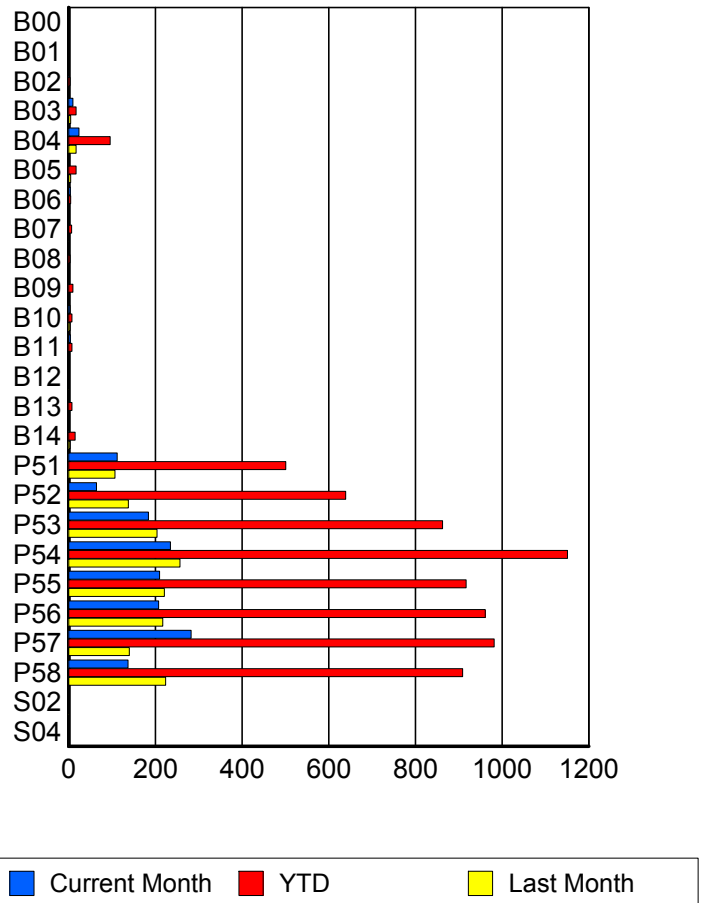
RR/SIRV Responses per County



## Road Ranger / SIRV Performance By Truck

	Current Mo	Last Month	YTD
B00	1	0	2
	1	0	2
	1	0	2
B01	0	1	1
	0	1	1
	0	1	1
B02	1	1	3
	1	1	3
	1	1	3
B03	10	5	17
	10	5	17
	11	5	18
B04	24	17	95
	24	17	96
	30	20	111
B05	1	5	16
	1	5	17
	1	6	18
B06	4	0	5
	4	0	5
	4	0	5
B07	2	1	7
	2	1	7
	2	1	7
B08	0	1	3
	0	1	3
	0	1	3

RR/SIRV Responses per Truck



	Current Mo	Last Month	YTD
B09	2	0	10
	2	0	10
	2	0	10
B10	3	3	8
	3	3	8
	3	3	8
B11	4	1	8
	4	1	8
	5	1	9
B12	0	1	2
	0	1	2
	0	1	2
B13	0	1	8
	0	1	8
	0	2	9
B14	1	3	15
	1	3	15
	1	3	16
P51	112	105	497
	112	107	501
	116	114	525
P52	64	138	635
	64	138	639
	68	143	679
P53	183	201	853
	184	204	863
	194	216	924
P54	233	254	1,141
	235	257	1,151
	248	280	1,230
P55	208	218	908
	210	221	917
	219	231	972
P56	206	216	949
	208	217	961
	220	229	1,037
P57	280	139	976
	283	140	982
	301	153	1,056
P58	133	222	897
	137	224	909
	148	244	961
S02	0	1	1
	0	1	1
	0	1	1

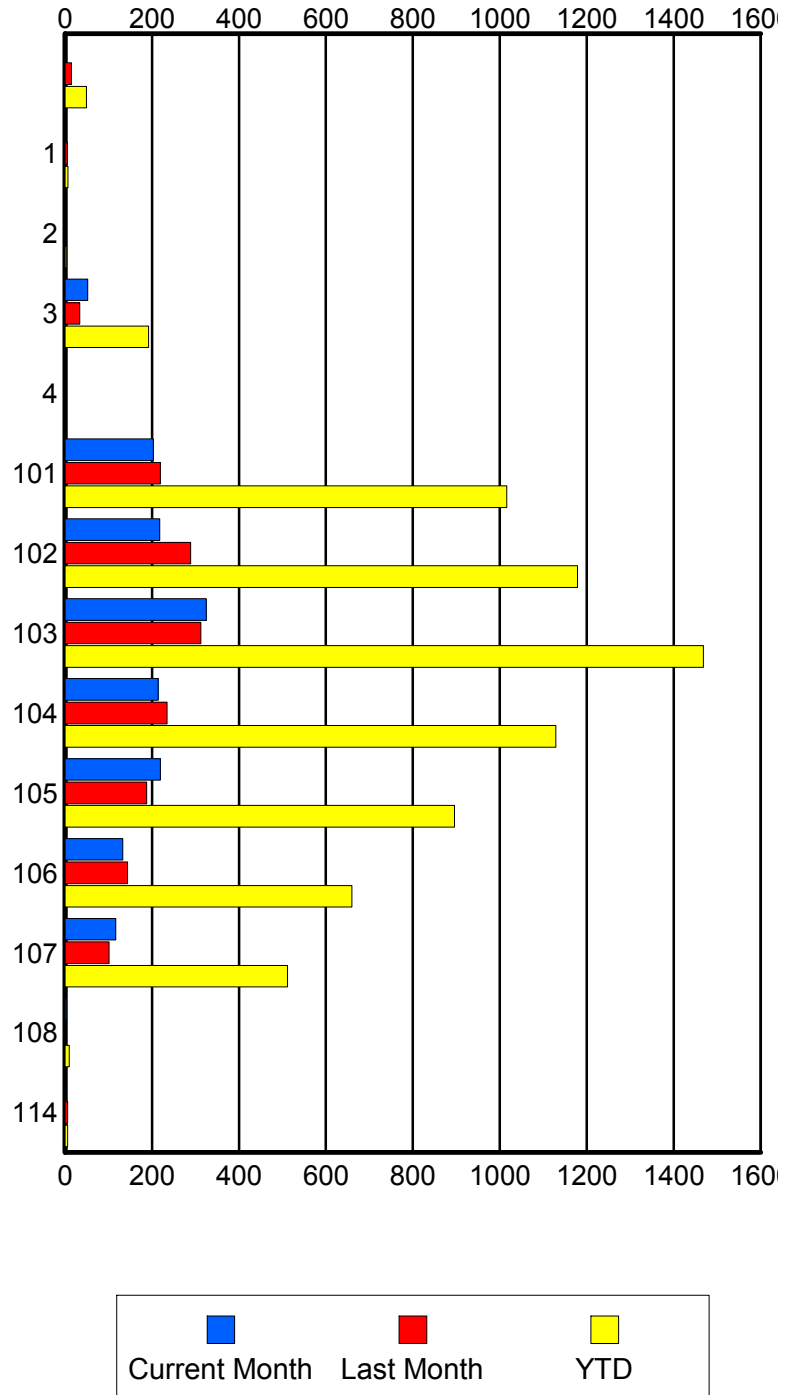
	Current Mo	Last Month	YTD
S04	1	0	2
	1	0	2
	1	0	2

### Road Ranger / SIRV Performance By Beat

	Current Mo	Last Month	YTD
	2	15	49
	2	15	49
	2	15	49
1	1	5	7
	1	5	7
	1	6	8
2	0	0	3
	0	0	3
	0	0	4
3	52	34	190
	52	34	192
	60	38	210
4	0	1	1
	0	1	1
	0	1	1
101	202	215	1,005
	203	219	1,016
	211	231	1,092
102	214	286	1,166
	218	289	1,179
	233	310	1,250
103	321	308	1,451
	325	312	1,468
	342	338	1,576
104	213	235	1,121
	214	235	1,129
	229	251	1,214
105	216	186	888
	219	188	896
	233	201	952
106	132	144	652
	133	144	660
	141	153	704
107	117	99	508
	117	101	512
	121	106	533
108	3	0	9
	3	0	10
	3	0	10
114	0	6	6
	0	6	6
	0	6	6

Values presented are:  
 - Total Events with a RR/SIRV Response  
 - Total RR/SIRV Responses,  
 - Total Activities Performed

### RR/SIRV Responses per Beat

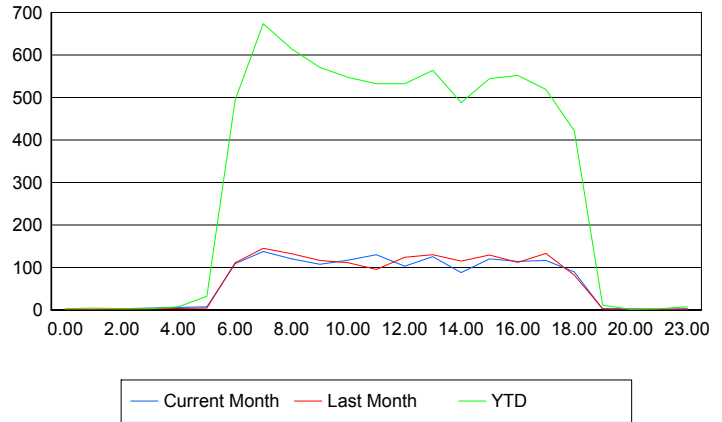


## Road Ranger / SIRV Performance By Time of Day

Values presented are:  
 - Total Events with a RR/SIRV Response  
 - Total RR/SIRV Responses,  
 - Total Activities Performed

	Current Mo	Last Month	YTD
12AM-1AM	1 1 1	1 1 1	3 3 3
1AM-2AM	1 1 1	1 1 1	4 4 4
2AM-3AM	0 0 0	1 1 1	3 3 3
3AM-4AM	0 0 0	0 0 0	3 3 3
4AM-5AM	0 0 0	0 0 0	4 7 8
5AM-6AM	7 7 7	4 4 4	30 32 32
6AM-7AM	101 109 113	108 111 115	473 495 520
7AM-8AM	131 137 148	143 145 154	647 674 722
8AM-9AM	115 120 134	129 132 138	590 614 662
9AM-10AM	103 107 112	112 116 128	553 571 627
10AM-11AM	114 117 118	106 111 116	529 547 577
11AM-12PM	127 130 137	94 95 106	516 532 578
12PM-1PM	99 103 110	119 124 132	515 532 569

## Number of Responses / Hour of the Day



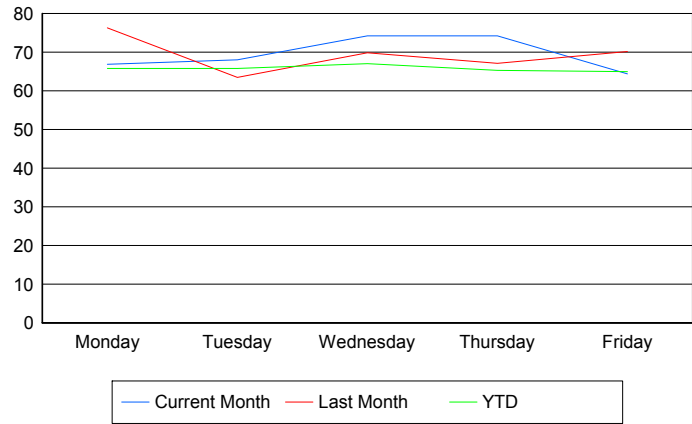
	Current Mo	Last Month	YTD
1PM-2PM	124	124	551
	125	130	564
	137	140	611
2PM-3PM	85	112	471
	88	115	488
	93	124	514
3PM-4PM	116	126	526
	120	129	544
	129	140	579
4PM-5PM	111	109	534
	114	112	552
	117	118	578
5PM-6PM	114	128	505
	116	133	519
	120	142	549
6PM-7PM	89	81	418
	89	82	422
	96	89	447
7PM-8PM	2	3	11
	2	3	11
	2	3	12
8PM-9PM	0	0	1
	0	0	1
	0	0	1
10PM-11PM	0	1	3
	0	1	3
	0	1	3
11PM-12AM	1	2	6
	1	3	7
	1	3	7

## Road Ranger / SIRV Performance By Day of Week

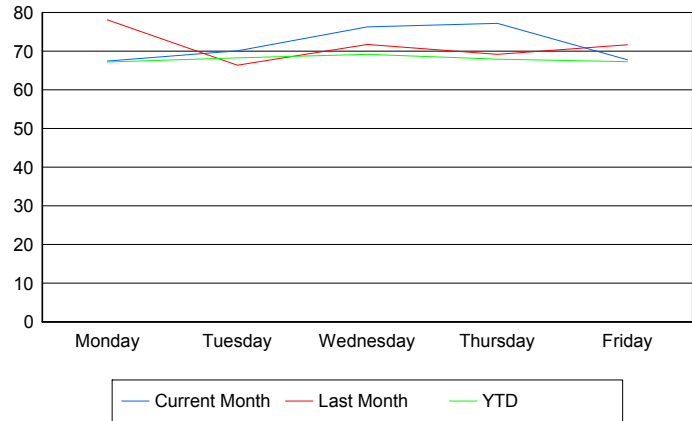
Values presented are:  
 - Total Events with a RR/SIRV Response  
 - Total RR/SIRV Responses,  
 - Total Activities Performed

	Current Mo	Last Month	YTD
Monday	261	304	1,349
	263	311	1,378
	282	327	1,461
Tuesday	270	250	1,357
	278	262	1,406
	295	279	1,500
Wednesday	296	346	1,388
	304	356	1,433
	326	383	1,538
Thursday	296	329	1,403
	308	339	1,461
	326	367	1,567
Friday	318	275	1,401
	334	281	1,450
	347	300	1,543

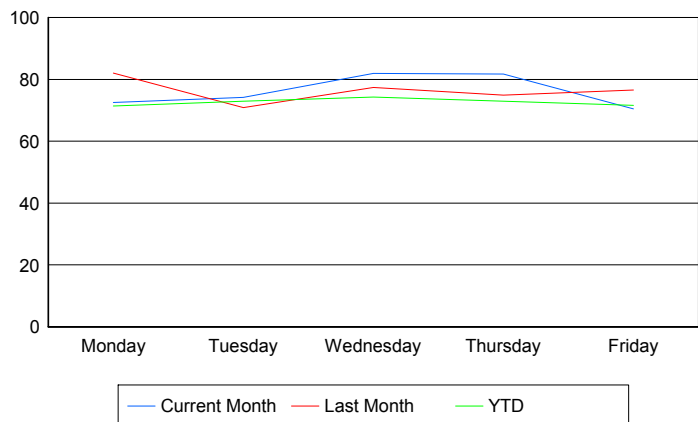
### Avg # of events with a RR/SIRV Response per Day of the Week



### Avg # of RR/SIRV Responses per Day of the Week



### Avg # of RR/SIRV Activities Performed per Day of the Week



### Road Ranger / SIRV Responses per Time of Day and Day of Week

