



Monthly Performance Measures Report Palm Beach County



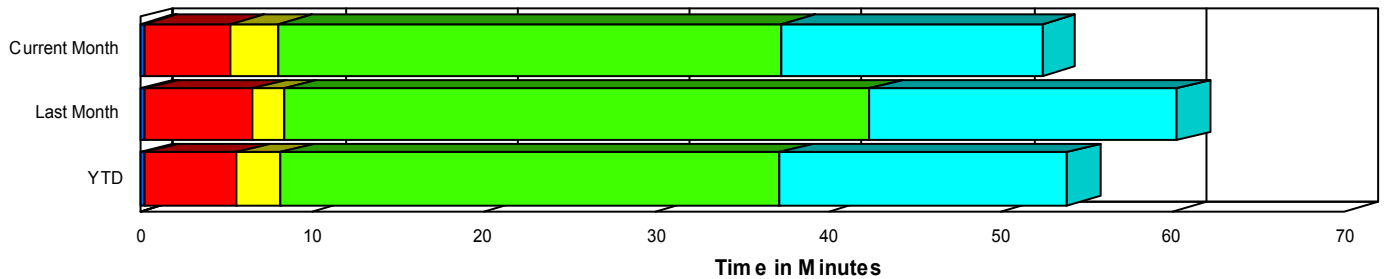
Created on:
September 28, 2007
11:35 am

Period From Jul 1, 2007 to Jul 31, 2007

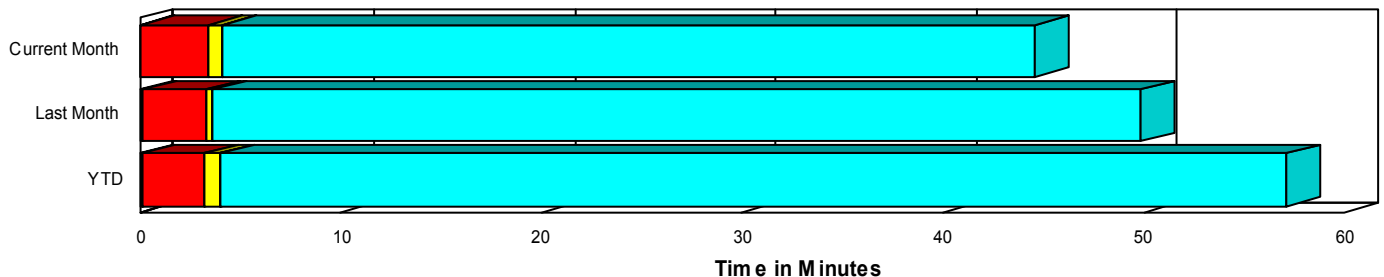
Performance Measures Summary

	Traffic Events (No Lanes Blocked)			Incidents (Lanes Blocked)		
	<u>This Month</u>	<u>Last Month</u>	<u>YTD</u>	<u>This Month</u>	<u>Last Month</u>	<u>YTD</u>
Number of Events	2,921	2,515	18,287	167	175	1,271
TMC Detection (min.)	0.07	0.13	0.10	0.23	0.33	0.30
TMC Verification (min.)	3.34	3.22	3.17	5.07	6.26	5.34
TMC Response (min.)	4.15	3.56	4.13	7.88	8.08	8.02
RR Dispatch Time (min.)	0.83	0.85	1.11	2.16	1.14	1.33
RR Response Time (min.)	3.33	2.76	3.03	5.73	6.93	6.69
Roadway Clearance (min.)				36.83	42.90	37.42
Event Clearance (min.)	44.69	49.86	57.25	51.60	56.49	52.25
# of Events w/ RR/SIRV	2,782	2,416	17,420	164	173	1,245
RR/SIRV Responses	2,869	2,491	18,006	213	224	1,565
RR/SIRV Activities	3,051	2,628	19,115	248	260	1,841

Incident Clearance TimeLine



Traffic Event(Non-Lane Blockage) Time-Line



<ul style="list-style-type: none"> Avg. TMC Detection Time Avg. Time from TMC Detection to TMC Verification Avg. Time from TMC Verification to TMC Response 	<ul style="list-style-type: none"> Avg. Time from TMC Response to Roadway Clearance* Avg. Time from Roadway Clearance to Incident/Event Clearance**
--	--

* Roadway clearance equals all travel lanes open

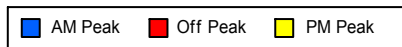
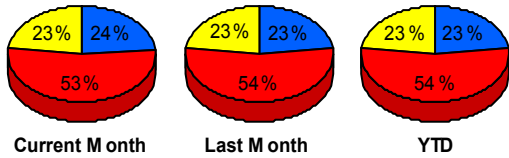
** Incident clearance equals time when last responder has left the scene

Performance Measures by Peak Period

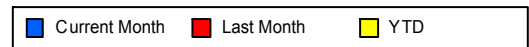
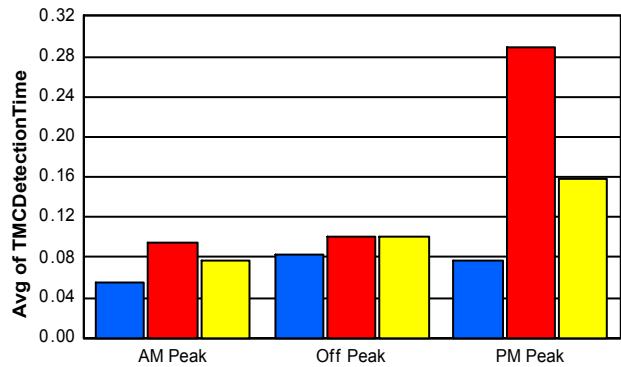
Note: AM peak period is defined as 6am to 10am and PM peak period is defined as 3pm to 7pm.

	AM Peak			Off Peak			PM Peak		
	<u>Current Month</u>	<u>Last Month</u>	<u>YTD</u>	<u>Current Month</u>	<u>Last Month</u>	<u>YTD</u>	<u>Current Month</u>	<u>Last Month</u>	<u>YTD</u>
Number of Events	730	622	4,508	1,647	1,459	10,530	711	609	4,520
Number of Incidents	36	50	317	95	90	638	36	35	316
TMC Detection (min.)	0.05	0.09	0.08	0.08	0.10	0.10	0.08	0.29	0.16
TMC Verification (min.)	2.58	2.54	2.18	3.61	3.65	3.53	3.90	3.73	3.94
TMC Response (min.)	3.70	3.12	3.24	4.67	3.89	4.86	4.32	4.54	4.46
RR Dispatch Time (min.)	0.56	0.43	0.55	1.07	0.77	1.45	0.87	1.56	0.95
RR Response Time (min.)	3.16	2.70	2.69	3.61	3.13	3.41	3.45	3.18	3.56
Event Clearance (min.)	39.45	27.04	47.15	46.92	61.24	67.82	46.51	47.80	41.31
Roadway Clearance (min.)	32.00	31.56	34.35	38.30	51.80	42.15	37.77	36.19	30.97
Incident Clearance (min.)	44.65	50.09	50.03	52.80	59.72	56.75	55.36	57.33	45.39
# of Events w/ RR/SIRV	701	606	4,358	1,563	1,394	9,941	682	589	4,366
RR/SIRV Responses	731	640	4,574	1,646	1,463	10,458	705	612	4,539
RR/SIRV Activities	779	675	4,848	1,770	1,572	11,279	750	641	4,829

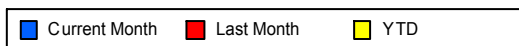
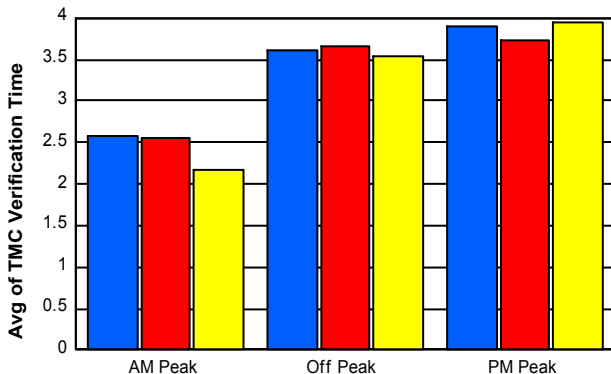
Number of Events / Peak Period



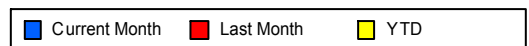
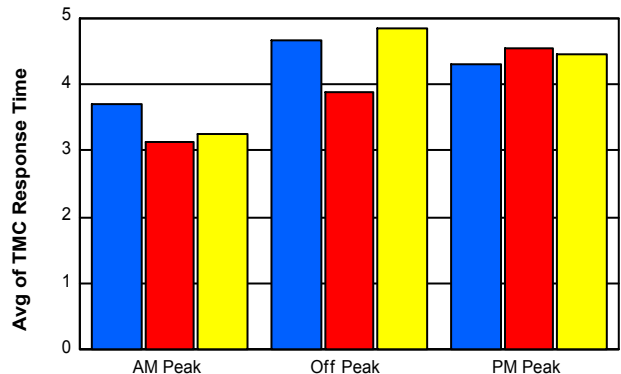
TMC Detection Time



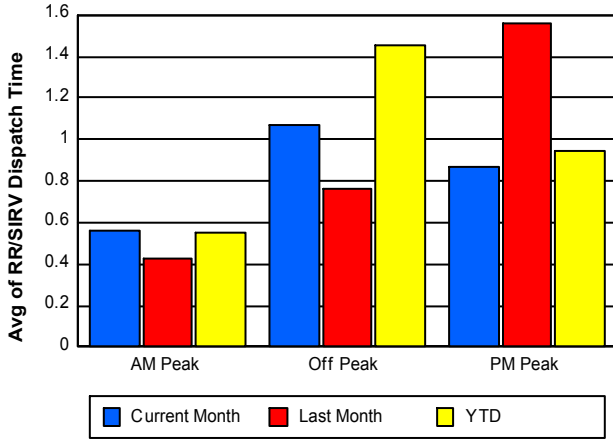
TMC Verification Time



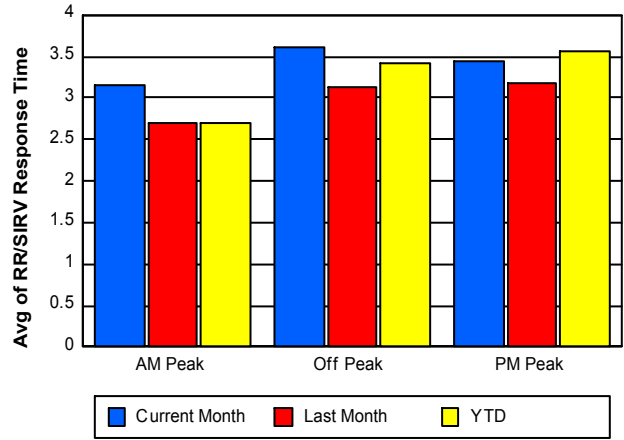
TMC Response Time



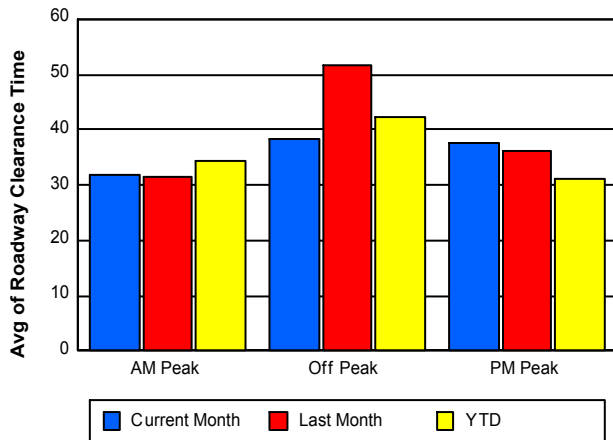
Road Ranger / SIRV Dispatch Time



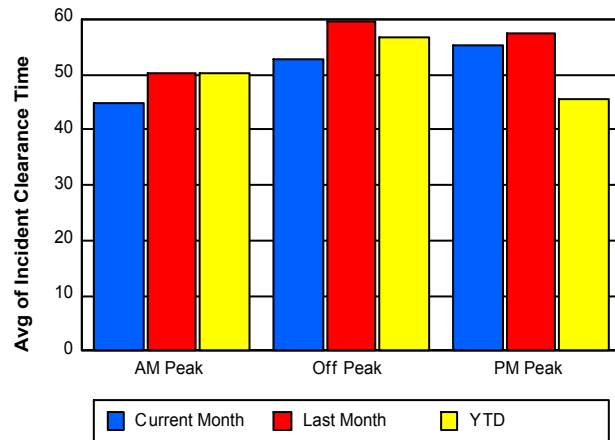
Road Ranger / SIRV Response Time



Roadway Clearance Time (2A)



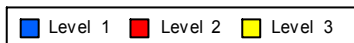
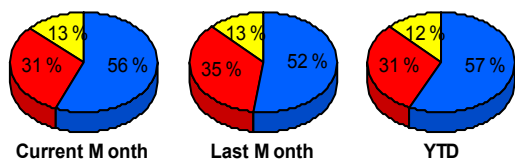
Incident Clearance Time (3B)



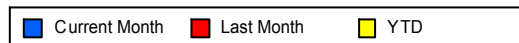
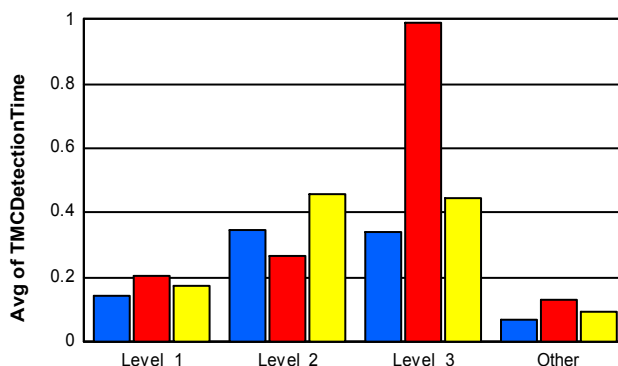
Performance Measures by Severity

	Level 1			Level 2			Level 3			Other		
	<u>This Month</u>	<u>Last Month</u>	<u>YTD</u>	<u>This Month</u>	<u>Last Month</u>	<u>YTD</u>	<u>This Month</u>	<u>Last Month</u>	<u>YTD</u>	<u>This Month</u>	<u>Last Month</u>	<u>YTD</u>
Number of Events	94	91	725	51	62	388	22	22	158	2,921	2,515	18,287
Number of Incidents	94	91	725	51	62	388	22	22	158	0	0	0
TMC Detection (min.)	0.14	0.21	0.18	0.35	0.26	0.46	0.34	0.99	0.45	0.07	0.13	0.10
TMC Verification (min.)	2.97	3.87	3.45	6.37	9.84	8.33	11.08	6.02	6.66	3.34	3.22	3.17
TMC Response (min.)	4.40	5.96	5.32	11.52	10.95	11.07	14.31	8.65	13.14	4.15	3.56	4.13
RR Dispatch Time (min.)	0.92	1.00	0.92	3.86	1.26	1.65	3.46	1.40	2.52	0.83	0.85	1.11
RR Resp. Time (min.)	3.49	4.95	4.42	7.67	9.70	9.42	10.85	7.25	10.62	3.33	2.76	3.03
Event Clearance (min.)	30.00	37.04	32.03	61.55	67.77	68.07	120.80	105.15	106.20	44.69	49.86	57.25
Roadway Clear. (min.)	12.68	14.10	12.65	51.41	56.26	56.12	106.21	124.34	105.19			
Incident Clearance (min.)	30.00	37.04	32.03	61.55	67.77	68.07	120.80	105.15	106.20			
# of Events w/ RR/SIRV	92	90	713	51	62	387	21	21	145	2,782	2,416	17,420
RR/SIRV Responses	106	102	799	72	87	534	35	35	232	2,869	2,491	18,006
RR/SIRV Activities	125	119	936	79	102	628	44	39	277	3,051	2,628	19,115

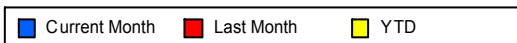
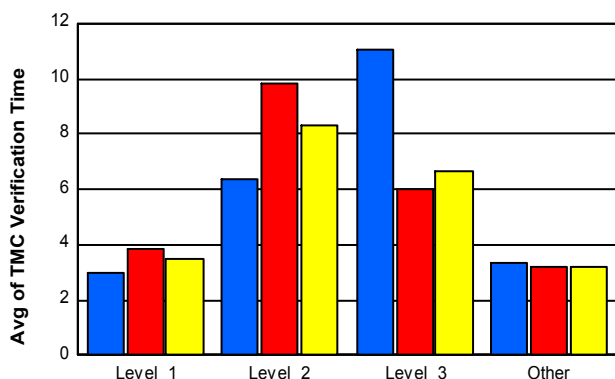
Number of Events / Severity



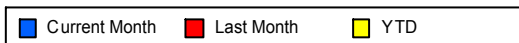
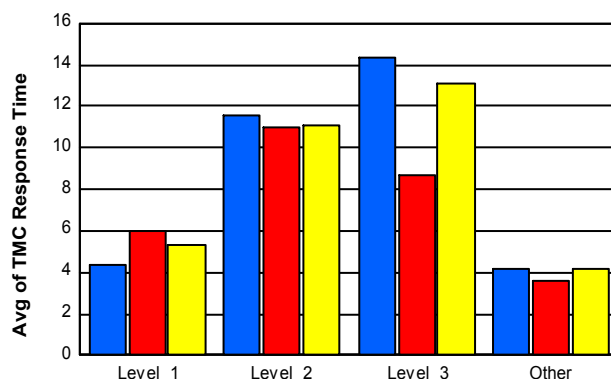
TMC Detection Time



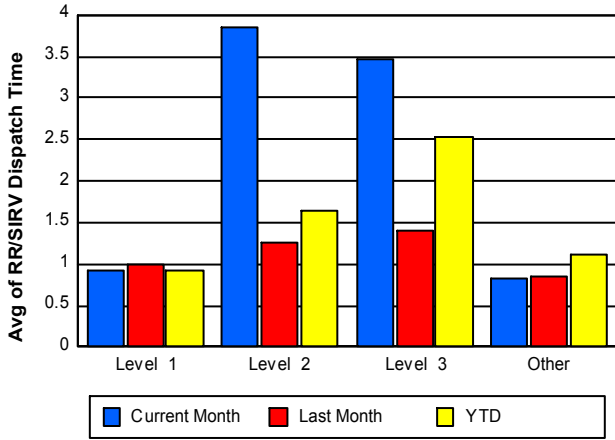
TMC Verification Time



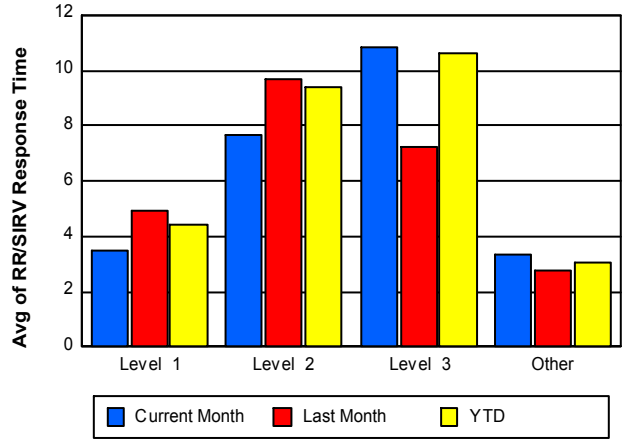
TMC Response Time



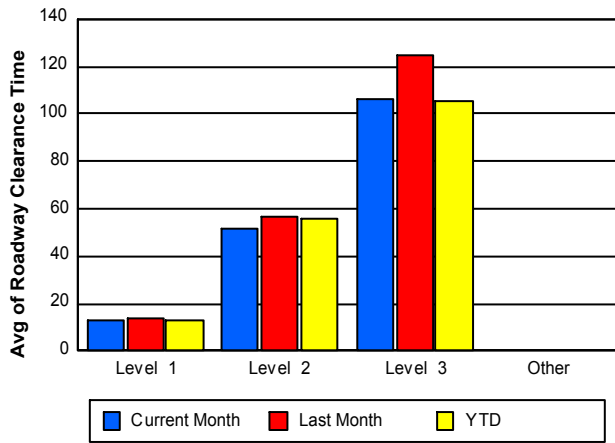
Road Ranger / SIRV Dispatch Time



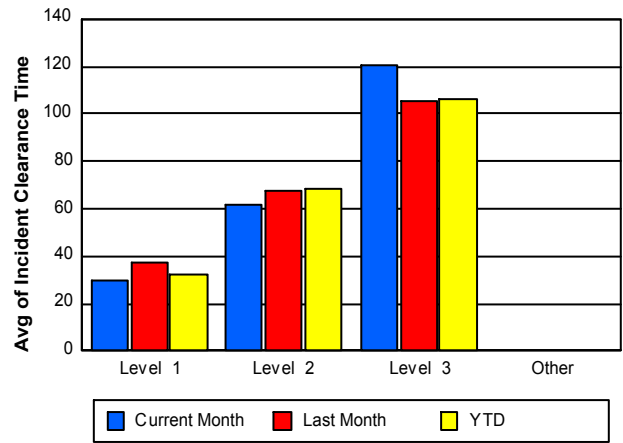
Road Ranger / SIRV Response Time



Roadway Clearance Time (2A)



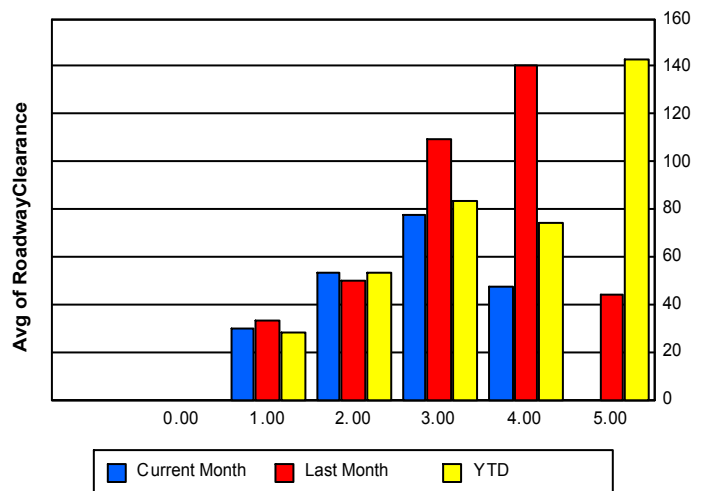
Incident Clearance Time (3B)



Roadway Clearance by Maximum Number of Lanes Blocked

	Current Month	Last Month	YTD
0			
1	29.67	33.29	27.90
2	52.96	50.17	53.29
3	77.72	109.80	83.13
4	47.57	140.14	74.59
5	0.00	43.97	142.88

Roadway Clearance Time (2A) by Max. # Lanes Blocked



Performance Measures by Roadway

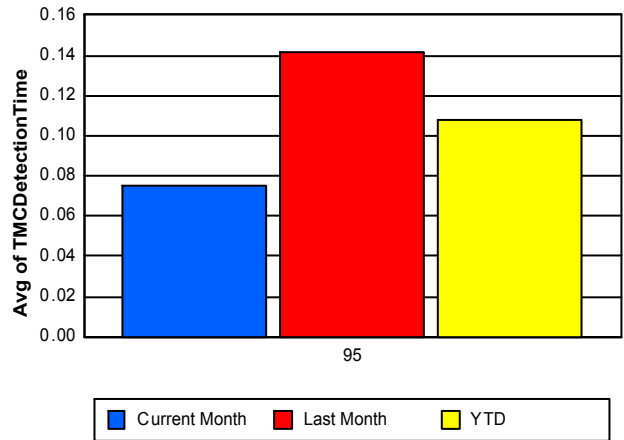
95

	<u>Current Month</u>	<u>Last Month</u>	<u>YTD</u>
Number of Events	3,088	2,690	19,558
Number of Incidents	167	175	1,271
TMC Detection (min.)	0.08	0.14	0.11
TMC Verification (min.)	3.43	3.41	3.31
TMC Response (min.)	4.36	3.86	4.39
RR Dispatch Time (min.)	0.90	0.87	1.13
RR Resp. Time (min.)	3.47	3.04	3.28
Event Clearance (min.)	45.06	50.29	56.93
Roadway Clear. (min.)	36.83	42.90	37.42
Incident Clearance (min.)	51.60	56.49	52.25
# of Events w/ RR/SIRV	2,946	2,589	18,665
RR/SIRV Responses	3,082	2,715	19,571
RR/SIRV Activities	3,299	2,888	20,956

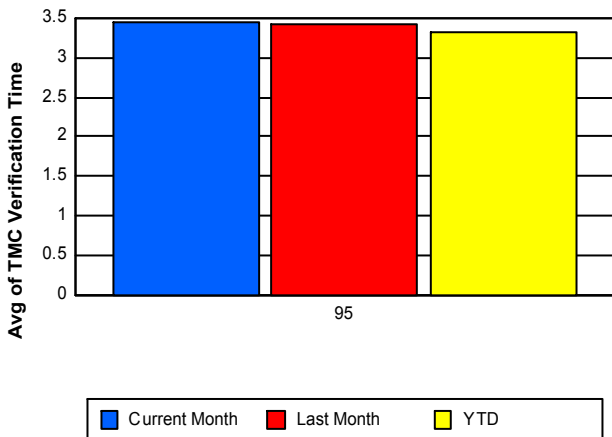
Number of Events / Roadway



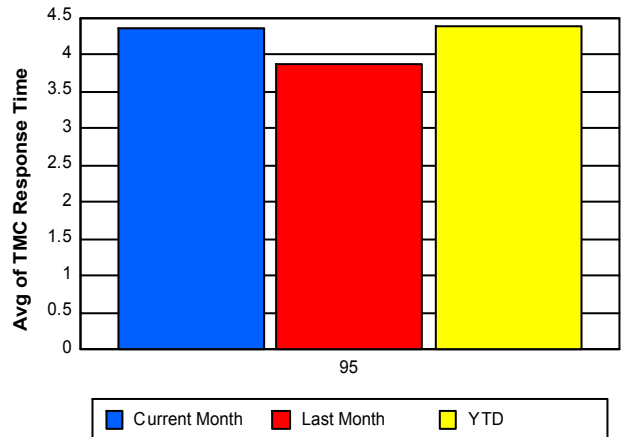
TMC Detection Time



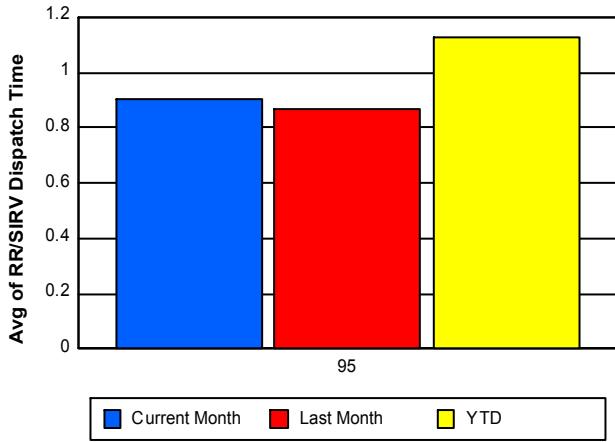
TMC Verification Time



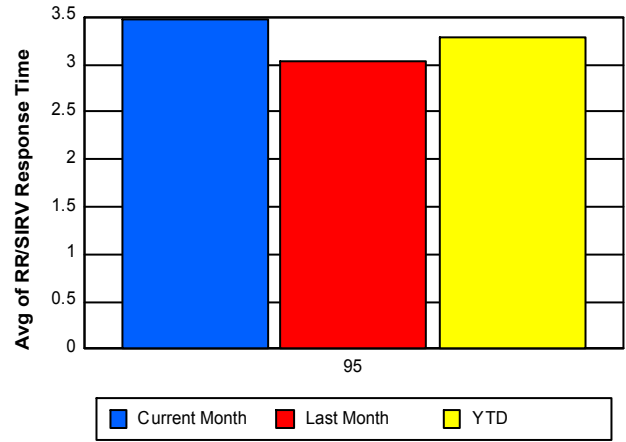
TMC Response Time



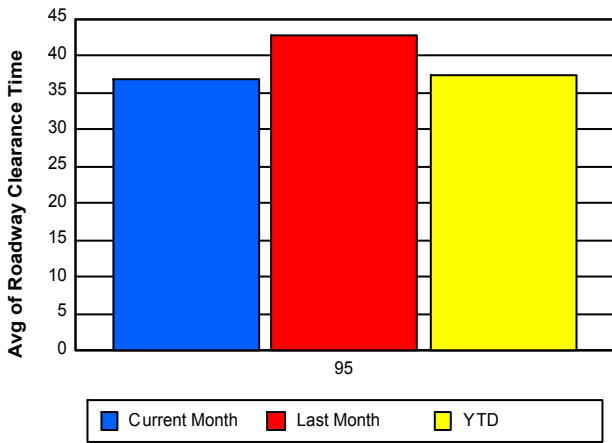
Road Ranger / SIRV Dispatch Time



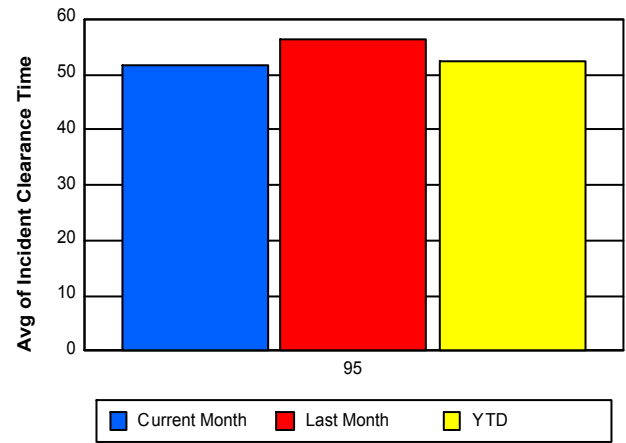
Road Ranger / SIRV Response Time



Roadway Clearance Time (2A)



Incident Clearance Time (3B)



Performance Measures by Event Type

Abandoned Vehicle

	<u>Current Month</u>	<u>Last Month</u>	<u>YTD</u>
Number of Events	556	514	3,773
Number of Incidents	1	2	17
TMC Detection (min.)	0.01	0.02	0.01
TMC Verification (min.)	1.20	0.77	0.30
TMC Response (min.)	2.73	1.84	4.15
RR Dispatch Time (min.)	1.12	1.21	3.25
RR Response Time (min.)	1.61	0.63	0.90
Event Clearance (min.)	158.76	179.19	212.24
Roadway Clearance (min.)	30.12	17.67	19.00
Incident Clearance (min.)	21.05	33.20	132.77
# of Events w/ RR/SIRV	461	434	3,057
RR/SIRV Assists	471	449	3,188
RR/SIRV Activities	486	460	3,297

Accident

	<u>Current Month</u>	<u>Last Month</u>	<u>YTD</u>
Number of Events	241	212	1,651
Number of Incidents	85	96	674
TMC Detection (min.)	0.24	0.80	0.39
TMC Verification (min.)	6.25	7.24	6.22
TMC Response (min.)	8.00	8.51	8.10
RR Dispatch Time (min.)	1.53	1.03	1.19
RR Response Time (min.)	6.47	7.53	6.92
Event Clearance (min.)	52.35	54.90	50.70
Roadway Clearance (min.)	46.88	45.29	47.29
Incident Clearance (min.)	70.29	71.32	67.99
# of Events w/ RR/SIRV	238	208	1,619
RR/SIRV Assists	289	248	1,928
RR/SIRV Activities	327	278	2,172

Congestion

	<u>Current Month</u>	<u>Last Month</u>	<u>YTD</u>
Number of Events	8	6	38
Number of Incidents	1	0	3
TMC Detection (min.)	0.05	0.00	0.02
TMC Verification (min.)	3.70	3.20	3.53
TMC Response (min.)	20.61	9.55	13.12
RR Dispatch Time (min.)	2.67	37.53	7.13
RR Response Time (min.)	17.94	9.33	11.16
Event Clearance (min.)	29.81	67.74	42.87
Roadway Clearance (min.)	3.15		52.32
Incident Clearance (min.)	43.75		79.64
# of Events w/ RR/SIRV	3	2	19
RR/SIRV Assists	3	2	23
RR/SIRV Activities	3	2	24

Debris on Roadway

	<u>Current Month</u>	<u>Last Month</u>	<u>YTD</u>
Number of Events	197	192	1,367
Number of Incidents	16	18	176
TMC Detection (min.)	0.21	0.18	0.21
TMC Verification (min.)	7.37	6.89	7.10
TMC Response (min.)	7.45	6.76	7.29
RR Dispatch Time (min.)	1.24	1.43	1.15
RR Response Time (min.)	6.22	5.33	6.15
Event Clearance (min.)	10.80	9.83	11.18
Roadway Clearance (min.)	7.99	13.05	11.56
Incident Clearance (min.)	14.29	15.72	12.79
# of Events w/ RR/SIRV	196	192	1,361
RR/SIRV Assists	200	200	1,408
RR/SIRV Activities	203	203	1,439

Disabled Vehicle

	<u>Current Month</u>	<u>Last Month</u>	<u>YTD</u>
Number of Events	2,023	1,734	12,375
Number of Incidents	56	51	345
TMC Detection (min.)	0.06	0.09	0.09
TMC Verification (min.)	3.34	3.35	3.40
TMC Response (min.)	3.88	3.47	3.55
RR Dispatch Time (min.)	0.73	0.63	0.58
RR Response Time (min.)	3.16	2.84	2.99
Event Clearance (min.)	16.95	16.35	16.44
Roadway Clearance (min.)	26.41	32.13	24.77
Incident Clearance (min.)	31.94	41.62	34.96
# of Events w/ RR/SIRV	1,994	1,727	12,292
RR/SIRV Assists	2,061	1,783	12,672
RR/SIRV Activities	2,220	1,912	13,663

Emergency Vehicles

	<u>YTD</u>
Number of Events	5
Number of Incidents	3
TMC Detection (min.)	0.17
TMC Verification (min.)	4.74
TMC Response (min.)	5.90
RR Dispatch Time (min.)	0.32
RR Response Time (min.)	5.57
Event Clearance (min.)	16.73
Roadway Clearance (min.)	15.64
Incident Clearance (min.)	17.21
# of Events w/ RR/SIRV	4
RR/SIRV Assists	4
RR/SIRV Activities	4

Off Ramp Backup

	<u>YTD</u>
Number of Events	2
Number of Incidents	0
TMC Detection (min.)	0.00
TMC Verification (min.)	0.00
TMC Response (min.)	5.67
RR Dispatch Time (min.)	0.40
RR Response Time (min.)	5.27
Event Clearance (min.)	19.78
Roadway Clearance (min.)	
Incident Clearance (min.)	
# of Events w/ RR/SIRV	1
RR/SIRV Assists	2
RR/SIRV Activities	2

Other

	<u>Current Month</u>	<u>Last Month</u>	<u>YTD</u>
Number of Events	39	18	192
Number of Incidents	1	0	6
TMC Detection (min.)	0.05	0.06	0.05
TMC Verification (min.)	3.95	4.68	5.47
TMC Response (min.)	8.37	6.48	8.85
RR Dispatch Time (min.)	1.22	1.03	1.04
RR Response Time (min.)	7.38	5.71	7.88
Event Clearance (min.)	16.71	15.36	17.40
Roadway Clearance (min.)	21.50		65.68
Incident Clearance (min.)	10.25		71.22
# of Events w/ RR/SIRV	30	13	168
RR/SIRV Assists	31	13	175
RR/SIRV Activities	32	13	180

Pedestrian

	<u>Current Month</u>	<u>Last Month</u>	<u>YTD</u>
Number of Events	14	5	95
Number of Incidents	0	0	1
TMC Detection (min.)	0.03	0.17	0.12
TMC Verification (min.)	0.20	1.34	1.77
TMC Response (min.)	0.37	1.29	2.52
RR Dispatch Time (min.)	0.32	0.04	0.19
RR Response Time (min.)	0.06	1.26	2.30
Event Clearance (min.)	19.58	8.77	14.58
Roadway Clearance (min.)			18.32
Incident Clearance (min.)			19.55
# of Events w/ RR/SIRV	14	5	92
RR/SIRV Assists	14	5	93
RR/SIRV Activities	14	5	95

Police Activity

	<u>Current Month</u>	<u>Last Month</u>	<u>YTD</u>
Number of Events	3	3	34
Number of Incidents	1	2	24
TMC Detection (min.)	0.41	0.05	0.16
TMC Verification (min.)	3.24	1.98	2.21
TMC Response (min.)	24.92	1.97	9.37
RR Dispatch Time (min.)	2.97	0.06	2.75
RR Response Time (min.)	21.95	1.92	6.70
Event Clearance (min.)	49.11	29.18	59.25
Roadway Clearance (min.)	65.23	31.19	65.83
Incident Clearance (min.)	65.00	35.77	76.23
# of Events w/ RR/SIRV	3	3	30
RR/SIRV Assists	4	3	43
RR/SIRV Activities	5	3	45

Road Work - Emergency

	<u>Current Month</u>	<u>Last Month</u>	<u>YTD</u>
Number of Events	4	4	19
Number of Incidents	3	4	17
TMC Detection (min.)	0.00	0.44	0.15
TMC Verification (min.)	0.00	0.00	4.33
TMC Response (min.)	1.40	6.50	8.14
RR Dispatch Time (min.)	0.47	6.33	2.77
RR Response Time (min.)	0.93	0.17	5.37
Event Clearance (min.)	52.61	74.59	58.91
Roadway Clearance (min.)	53.31	212.05	115.99
Incident Clearance (min.)	59.26	74.59	55.77
# of Events w/ RR/SIRV	4	4	17
RR/SIRV Assists	6	11	30
RR/SIRV Activities	6	11	30

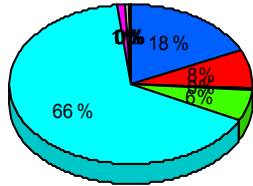
Visibility

	<u>YTD</u>
Number of Events	2
Number of Incidents	0
TMC Detection (min.)	0.00
TMC Verification (min.)	0.00
TMC Response (min.)	0.00
RR Dispatch Time (min.)	0.00
RR Response Time (min.)	0.00
Event Clearance (min.)	22.63
Roadway Clearance (min.)	
Incident Clearance (min.)	
# of Events w/ RR/SIRV	1
RR/SIRV Assists	1
RR/SIRV Activities	1

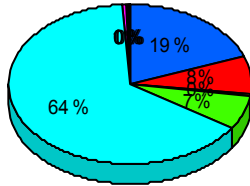
Weather

	<u>Current Month</u>	<u>Last Month</u>	<u>YTD</u>
Number of Events	3	2	5
Number of Incidents	3	2	5
TMC Detection (min.)	0.20	7.89	3.28
TMC Verification (min.)	8.87	0.00	5.32
TMC Response (min.)	26.62	0.00	19.97
RR Dispatch Time (min.)	7.34	0.00	5.50
RR Response Time (min.)	19.28	0.00	14.46
Event Clearance (min.)	102.38	98.70	100.91
Roadway Clearance (min.)	93.03	169.62	123.67
Incident Clearance (min.)	102.38	98.70	100.91
# of Events w/ RR/SIRV	3	1	4
RR/SIRV Assists	3	1	4
RR/SIRV Activities	3	1	4

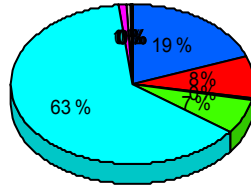
Number of Events / Event Type



Current Month



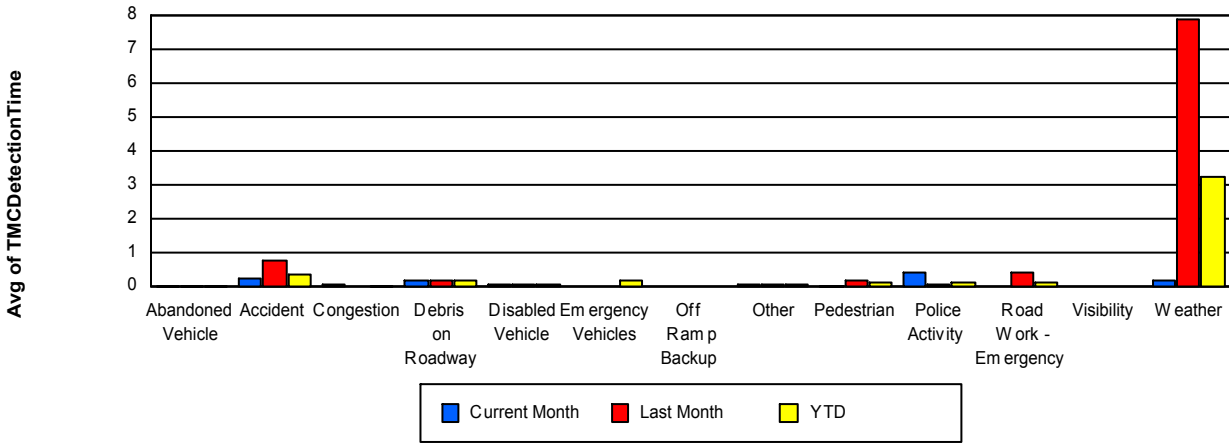
Last Month



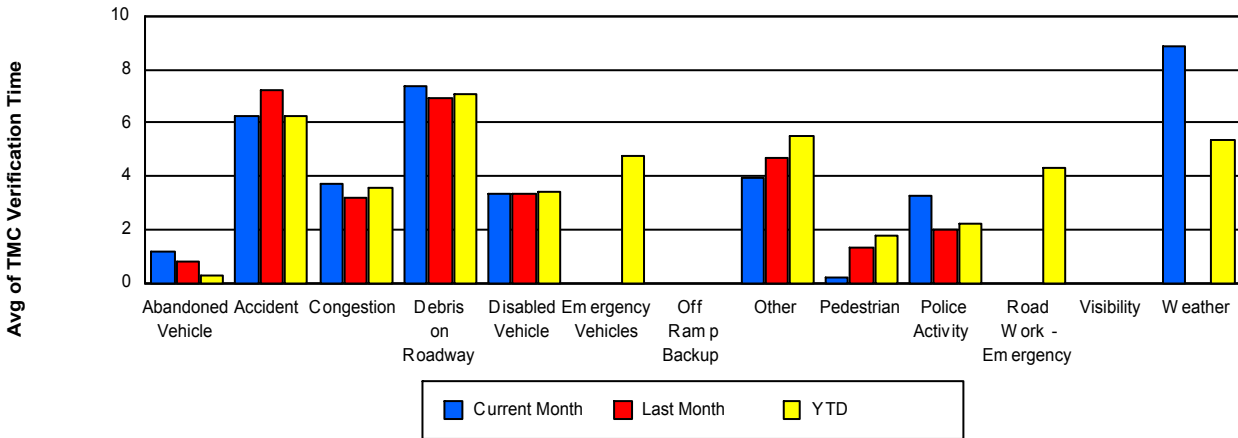
YTD



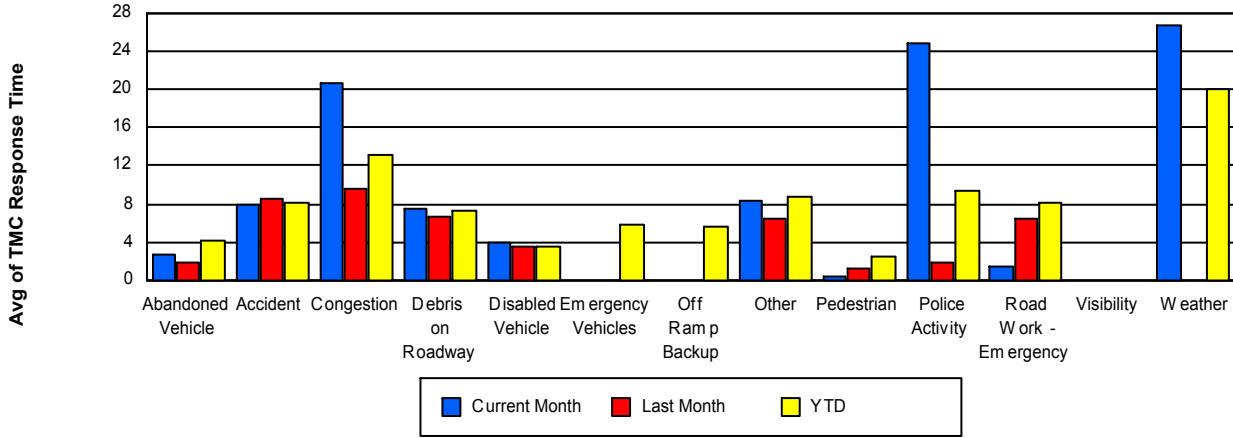
TMC Detection Time



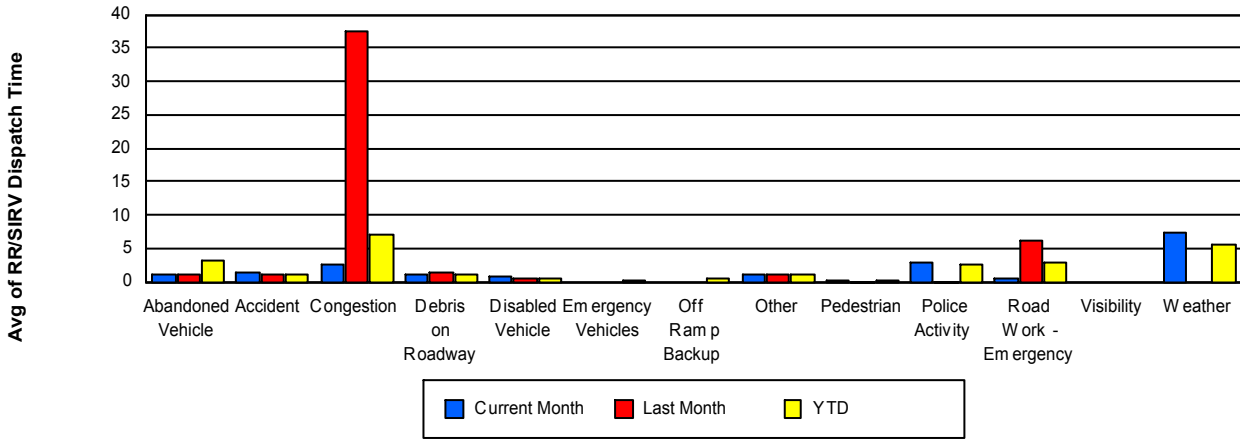
TMC Verification Time



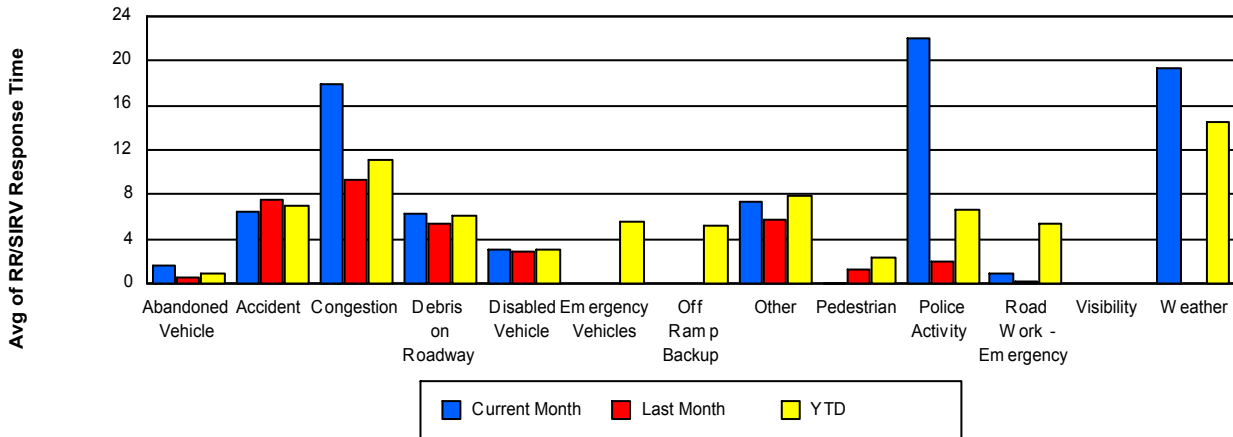
TMC Response Time



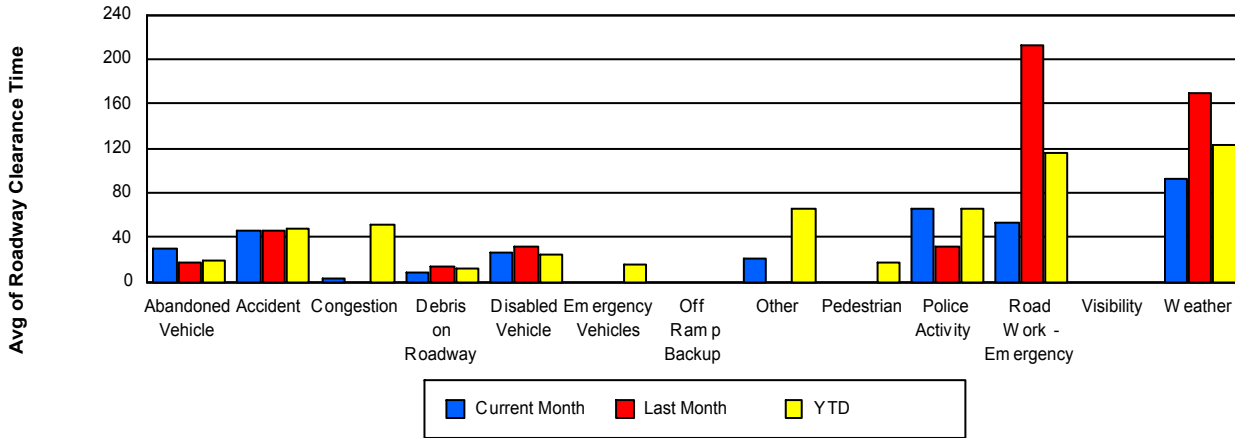
Road Ranger / SIRV Dispatch Time



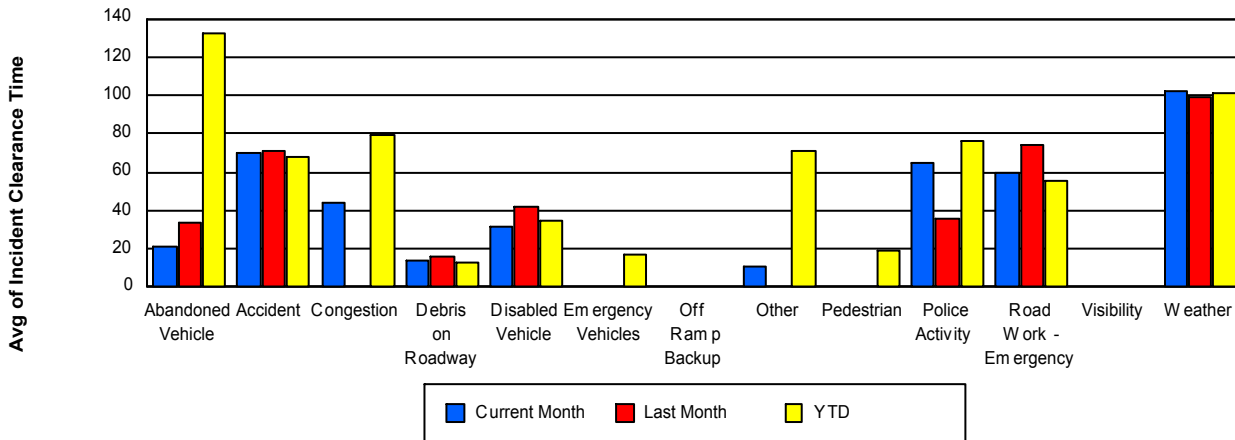
Road Ranger / SIRV Response Time



Roadway Clearance Time (2A)



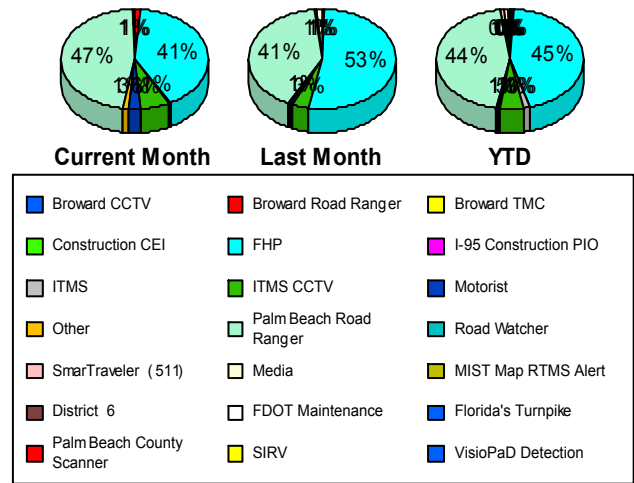
Incident Clearance Time (3B)



Incident Detection Methods

	Current Month	Last Month	YTD
Broward CCTV	0	0	1
Broward Road Ra	2	0	5
Broward TMC	0	1	3
Construction CEI	0	0	3
FHP	68	92	567
I-95 Construction	1	0	5
ITMS	0	0	12
ITMS CCTV	10	6	63
Media	0	2	15
Motorist	5	1	9
Other	2	1	8
Palm Beach Coun	0	0	1
Palm Beach Road	78	71	565
Road Watcher	1	0	1
SIRV	0	0	1
SmarTraveler (511)	0	1	12
Total	167	175	1,271

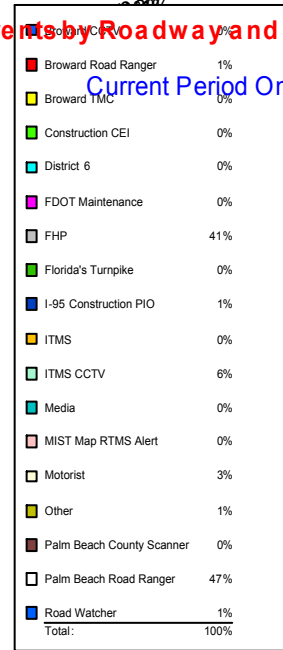
Total Incidents by Detection Method



Incident Detection Methods by Roadway

		Current Month	Last Month	YTD
95	Broward CCTV	0	0	1
	Broward Road Ra	2	0	5
	Broward TMC	0	1	3
	Construction CEI	0	0	3
	FHP	68	92	567
	I-95 Construction	1	0	5
	ITMS	0	0	12
	ITMS CCTV	10	6	63
	Media	0	2	15
	Motorist	5	1	9
	Other	2	1	8
	Palm Beach Coun	0	0	1
	Palm Beach Road	78	71	565
	Road Watcher	1	0	1
SIRV	0	0	1	
SmarTraveler (511)	0	1	12	
Total	167	175	1,271	
Total	167	175	1,271	

Total Events by Roadway and Detection Method

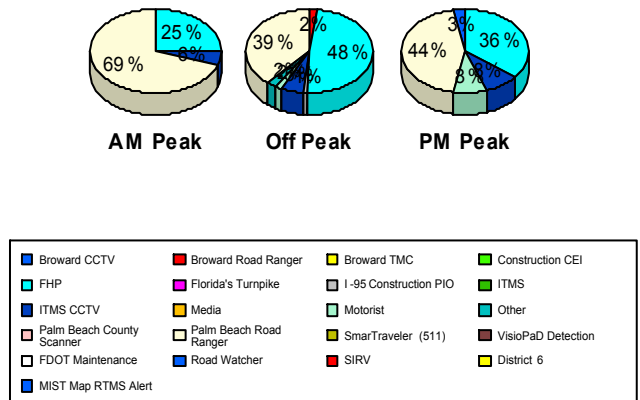


Incident Detection Methods by Peak Period

		Current Month	Last Month	YTD
AM Peak	Construction CEI	0	0	1
	FHP	9	22	120
	I-95 Construction	0	0	2
	ITMS	0	0	2
	ITMS CCTV	2	0	19
	Media	0	0	2
	Palm Beach Road	25	28	168
	SmarTraveler (511)	0	0	3
	Total	36	50	317
Off Peak	Broward Road Ra	2	0	4

Total Events by Roadway and Detection Method

Current Period Only



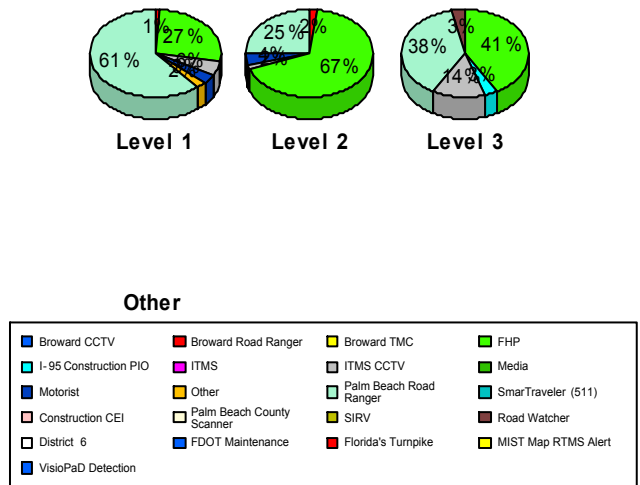
		Current Month	Last Month	YTD
Off Peak	Broward TMC	0	0	1
	Construction CEI	0	0	1
	FHP	46	53	329
	I-95 Construction	1	0	3
	ITMS	0	0	8
	ITMS CCTV	5	4	26
	Media	0	1	3
	Motorist	2	0	5
	Other	2	0	5
	Palm Beach Coun	0	0	1
	Palm Beach Road	37	31	247
	SIRV	0	0	1
	SmarTraveler (511	0	1	4
	Total	95	90	638
PM Peak	Broward CCTV	0	0	1
	Broward Road Ra	0	0	1
	Broward TMC	0	1	2
	Construction CEI	0	0	1
	FHP	13	17	118
	ITMS	0	0	2
	ITMS CCTV	3	2	18
	Media	0	1	10
	Motorist	3	1	4
	Other	0	1	3
	Palm Beach Road	16	12	150
	Road Watcher	1	0	1
	SmarTraveler (511	0	0	5
	Total	36	35	316
Total		167	175	1,271

Incident Detection Methods by Severity

		Current Month	Last Month	YTD
Level 1	Broward CCTV	0	0	1
	Broward Road Ra	1	0	4
	Broward TMC	0	0	2
	FHP	24	37	245
	I-95 Construction	0	0	1
	ITMS	0	0	5
	ITMS CCTV	5	5	37
	Media	0	1	7
	Motorist	3	0	5
	Other	2	1	6
	Palm Beach Road	55	40	392
	SmarTraveler (511)	0	1	6
	Total	90	85	711
Level 2	Broward Road Ra	1	0	1
	Construction CEI	0	0	2
	FHP	32	39	223
	I-95 Construction	0	0	3
	ITMS	0	0	5
	ITMS CCTV	1	1	17
	Media	0	1	6
	Motorist	2	1	4
	Other	0	0	2
	Palm Beach Coun	0	0	1
	Palm Beach Road	12	17	115
	SIRV	0	0	1
	SmarTraveler (511)	0	0	5
Total	48	59	385	
Level 3	Broward TMC	0	1	1
	Construction CEI	0	0	1
	FHP	12	16	99
	I-95 Construction	1	0	1

Total Events by Roadway and Detection Method

Current Period Only



		Current Month	Last Month	YTD
Level 3	ITMS	0	0	2
	ITMS CCTV	4	0	9
	Media	0	0	2
	Palm Beach Road	11	14	58
	Road Watcher	1	0	1
	SmarTraveler (511)	0	0	1
	Total	29	31	175
Total		167	175	1,271

Road Ranger / SIRV Performance Measures

Road Ranger / SIRV Performance By County

RR/SIRV Responses per County

Values presented are:
 - Total Events with a RR/SIRV Response
 - Total RR/SIRV Responses,
 - Total Activities Performed

	Current Month	Last Month	YTD
Palm Beach	2,946	2,589	18,665
	3,082	2,715	19,571
	3,299	2,888	20,956

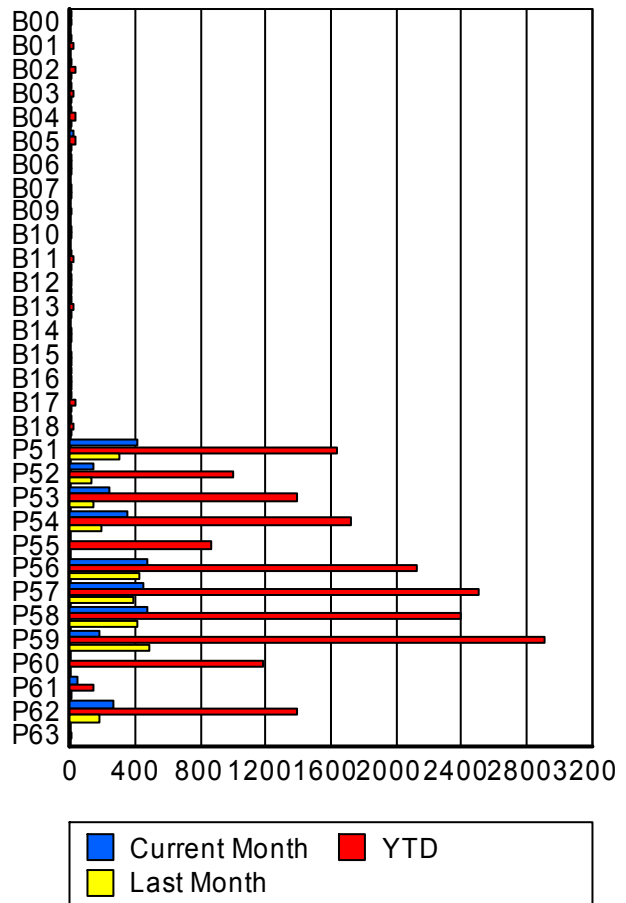


■ Palm Beach

Road Ranger / SIRV Performance By Truck

	Current Month	Last Month	YTD
B00	2	0	2
	2	0	2
	3	0	3
B01	4	0	20
	4	0	20
	4	0	22
B02	12	4	35
	12	4	35
	13	4	36
B03	5	3	17
	5	3	17
	5	3	17
B04	1	5	33
	1	5	33
	1	5	33
B05	13	5	27
	13	5	27
	13	5	27
B06	1	4	11
	1	4	11
	1	4	11
B07	0	3	8
	0	3	8
	0	4	9

RR/SIRV Responses per Truck



	Current Month	Last Month	YTD
B09	0 0 0	0 0 0	1 1 1
B10	2 2 2	0 0 0	7 7 7
B11	9 9 10	5 5 6	24 24 26
B12	2 3 3	2 2 2	8 9 9
B13	1 1 1	5 5 5	18 18 19
B14	0 0 0	1 1 1	11 11 11
B15	0 0 0	4 4 4	10 10 10
B16	1 1 1	2 2 2	7 7 7
B17	7 7 9	5 5 5	33 33 35
B18	4 4 4	6 6 6	23 23 23
P51	403 407 435	303 304 320	1,623 1,642 1,755
P52	143 146 153	132 134 143	996 1,005 1,084
P53	233 233 248	135 137 139	1,378 1,390 1,484
P54	341 345 361	185 188 191	1,700 1,720 1,836
P55	0 0 0	0 0 0	854 870 950

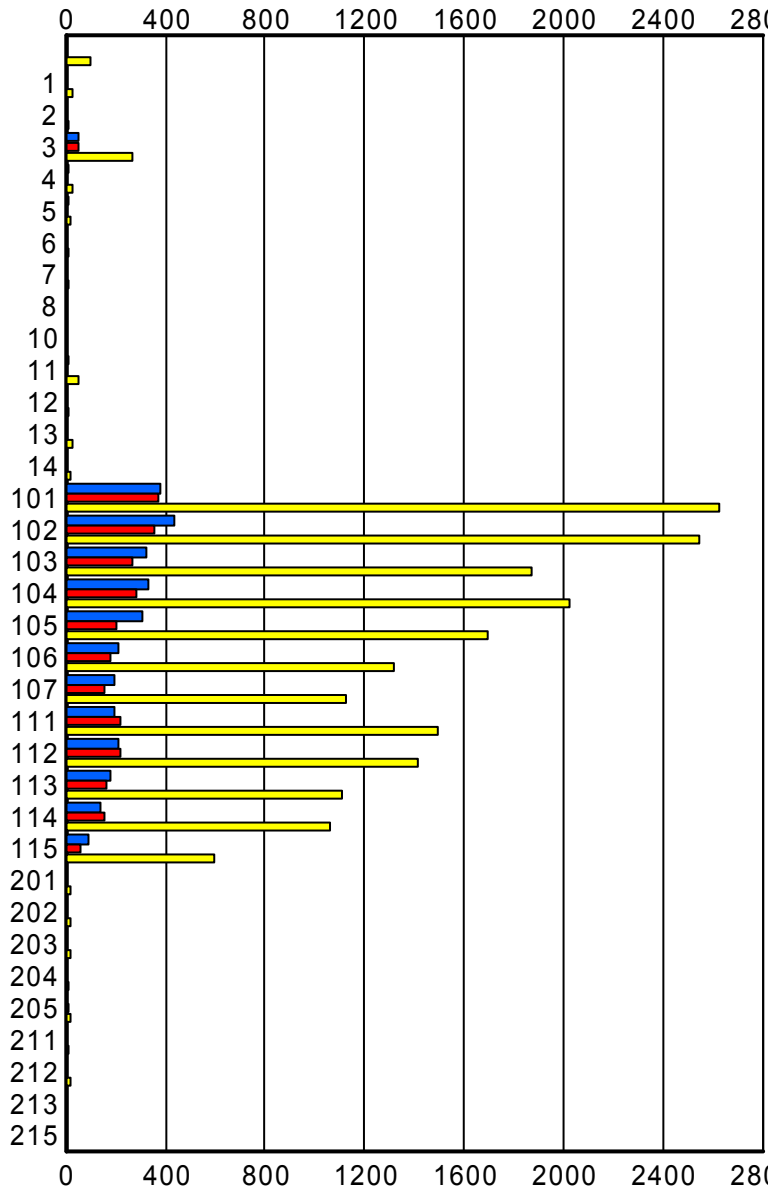
	Current Month	Last Month	YTD
P56	466	423	2,107
	472	429	2,126
	502	454	2,265
P57	441	385	2,480
	444	387	2,506
	484	418	2,690
P58	468	402	2,361
	473	409	2,393
	506	441	2,556
P59	179	486	2,884
	180	490	2,915
	197	527	3,126
P60	0	0	1,162
	0	0	1,180
	0	0	1,270
P61	48	9	137
	48	10	138
	54	10	149
P62	266	173	1,374
	269	173	1,389
	289	189	1,484
P63	0	0	1
	0	0	1
	0	0	1

Road Ranger / SIRV Performance By Beat

	Current Month	Last Month	YTD
	4	6	93
	4	6	95
	5	6	102
1	0	0	25
	0	0	26
	0	0	26
2	1	2	13
	1	2	13
	1	3	15
3	50	46	264
	51	47	266
	55	48	275
4	9	0	22
	9	0	23
	9	0	23
5	7	0	15
	7	0	15
	8	0	19
6	0	0	13
	0	0	13
	0	0	15
7	0	0	12
	0	0	12
	0	0	12
8	0	1	1
	0	1	1
	0	1	1
10	2	0	2
	2	0	2
	2	0	2
11	9	4	53
	9	4	53
	9	4	54
12	0	0	12
	0	0	12
	0	0	15
13	0	0	24
	0	0	27
	0	0	28
14	0	0	16
	0	0	16
	0	0	18

Values presented are:
 - Total Events with a RR/SIRV Response
 - Total RR/SIRV Responses,
 - Total Activities Performed

RR/SIRV Responses per Beat



■ Current Month
 ■ Last Month
 ■ YTD

	Current Month	Last Month	YTD
101	374	370	2,598
	377	375	2,624
	397	392	2,782
102	429	349	2,514
	439	353	2,545
	472	370	2,676
103	321	265	1,832
	326	268	1,867
	355	288	2,019
104	328	281	1,991
	332	285	2,026
	355	296	2,176
105	302	205	1,675
	306	207	1,694
	314	218	1,785
106	213	177	1,307
	214	178	1,320
	227	191	1,400
107	196	155	1,119
	197	156	1,128
	208	161	1,176
111	193	219	1,482
	193	220	1,495
	207	241	1,619
112	207	219	1,399
	208	223	1,414
	225	242	1,534
113	177	166	1,094
	178	167	1,109
	195	182	1,234
114	134	153	1,049
	137	154	1,064
	152	167	1,166
115	91	61	593
	92	62	599
	103	71	664
201	0	0	18
	0	0	18
	0	0	18
202	0	0	20
	0	0	20
	0	0	20
203	0	0	15
	0	0	15
	0	0	17

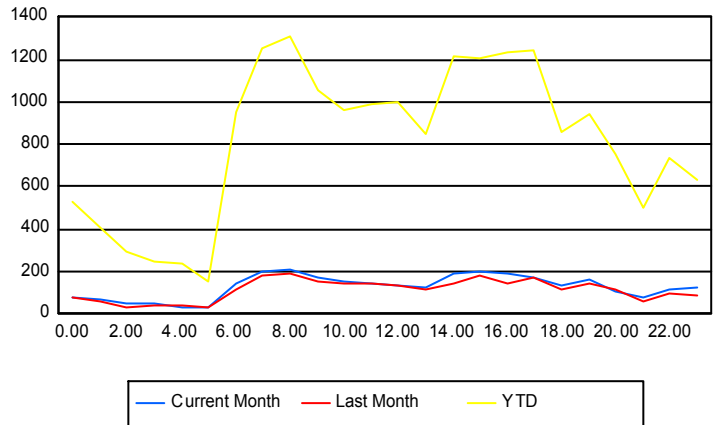
	Current Month	Last Month	YTD
204	0	0	10
	0	0	10
	0	0	13
205	0	7	16
	0	7	16
	0	7	18
211	0	0	10
	0	0	10
	0	0	10
212	0	0	17
	0	0	17
	0	0	17
213	0	0	5
	0	0	5
	0	0	6
215	0	0	1
	0	0	1
	0	0	1

Road Ranger / SIRV Performance By Time of Day

Values presented are:
 - Total Events with a RR/SIRV Response
 - Total RR/SIRV Responses,
 - Total Activities Performed

	Current Month	Last Month	YTD
12AM-1AM	68	71	502
	74	74	533
	81	89	582
1AM-2AM	57	53	381
	64	59	407
	70	66	450
2AM-3AM	52	30	285
	53	32	296
	57	34	317
3AM-4AM	42	37	233
	46	39	250
	56	43	274
4AM-5AM	33	29	215
	35	37	237
	42	41	262
5AM-6AM	24	26	138
	26	31	157
	30	38	178

Number of Responses / Hour of the Day



	Current Month	Last Month	YTD
6AM-7AM	140	114	900
	144	117	954
	149	119	1,013
7AM-8AM	195	170	1,203
	199	179	1,252
	209	197	1,327
8AM-9AM	199	180	1,241
	212	195	1,310
	232	197	1,387
9AM-10AM	167	142	1,014
	176	149	1,058
	189	162	1,121
10AM-11AM	146	138	925
	151	145	961
	164	155	1,031
11AM-12PM	140	136	946
	148	142	991
	154	146	1,039
12PM-1PM	133	130	958
	137	134	1,002
	143	140	1,072
1PM-2PM	121	113	806
	127	118	844
	131	128	899
2PM-3PM	182	138	1,146
	195	144	1,215
	213	148	1,300
3PM-4PM	194	175	1,162
	200	184	1,208
	211	190	1,278
4PM-5PM	189	140	1,183
	195	145	1,232
	210	149	1,314
5PM-6PM	173	160	1,204
	174	168	1,245
	184	175	1,312
6PM-7PM	126	114	817
	136	115	854
	145	127	925
7PM-8PM	155	140	912
	158	147	946
	168	153	1,025
8PM-9PM	101	113	722
	107	115	755
	112	122	815

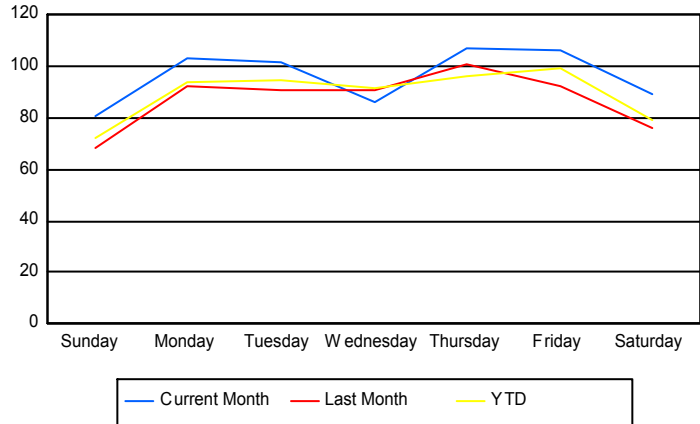
	Current Month	Last Month	YTD
9PM-10PM	76	63	474
	79	63	501
	82	68	536
10PM-11PM	110	89	693
	118	92	732
	128	100	821
11PM-12AM	123	88	605
	128	91	631
	139	101	678

Road Ranger / SIRV Performance By Day of Week

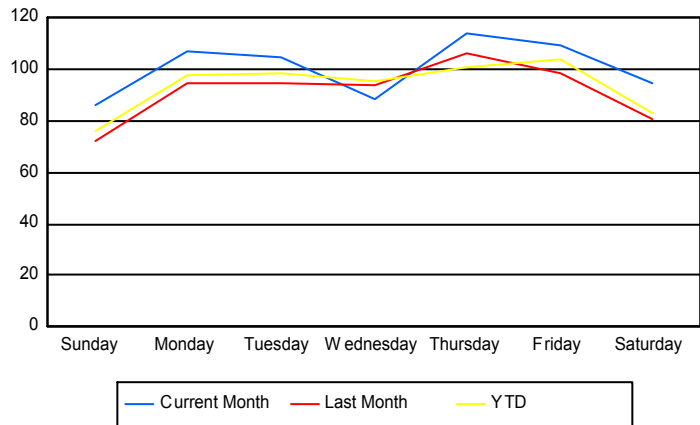
Values presented are:
 - Total Events with a RR/SIRV Response
 - Total RR/SIRV Responses,
 - Total Activities Performed

	Current Month	Last Month	YTD
Sunday	398	271	2,131
	424	286	2,236
	452	312	2,416
Monday	509	368	2,875
	529	378	2,997
	571	390	3,214
Tuesday	507	362	2,907
	524	377	3,023
	556	399	3,216
Wednesday	341	359	2,711
	351	373	2,818
	375	392	2,983
Thursday	421	402	2,848
	447	423	2,983
	488	454	3,194
Friday	423	456	2,941
	434	484	3,073
	452	507	3,275
Saturday	350	373	2,313
	373	394	2,441
	405	434	2,658

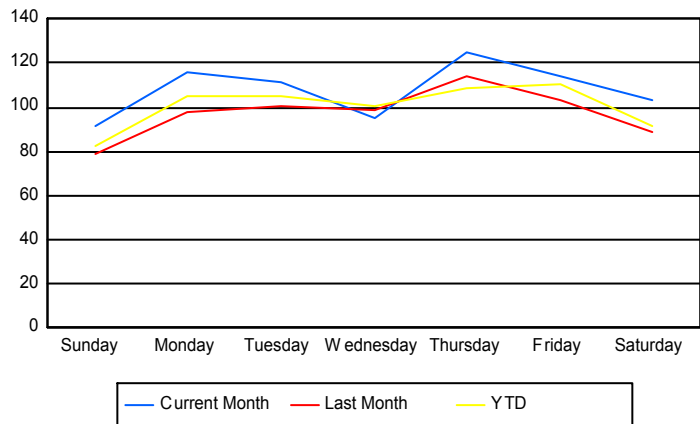
Avg # of events with a RR/SIRV Response per Day of the Week



Avg # of RR/SIRV Responses per Day of the Week



Avg # of RR/SIRV Activities Performed per Day of the Week



Road Ranger/SIRV Responses per Time of Day and Day of Week

