



Monthly Performance Measures Report Palm Beach County



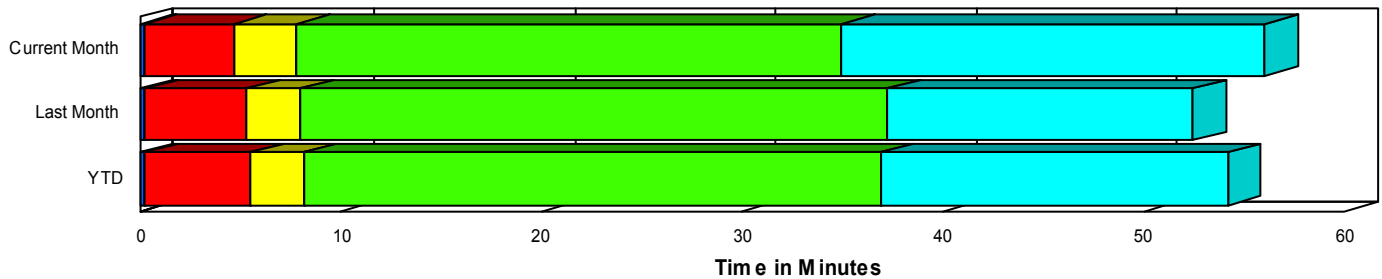
Created on:
September 28, 2007
11:42 am

Period From Aug 1, 2007 to Aug 31, 2007

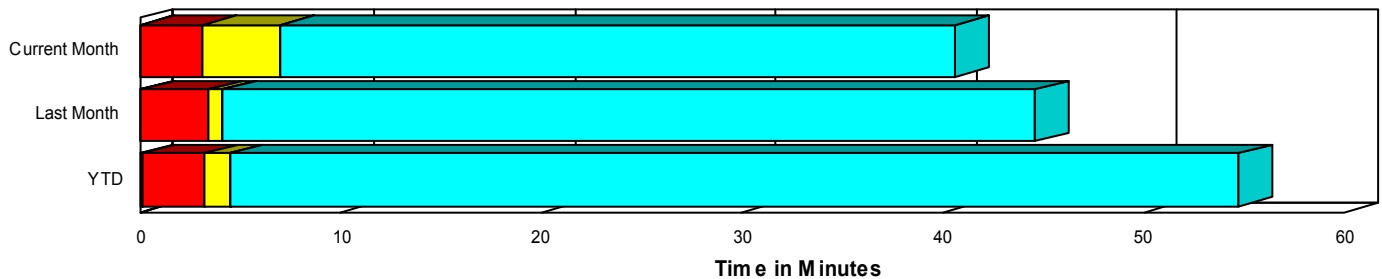
Performance Measures Summary

	Traffic Events (No Lanes Blocked)			Incidents (Lanes Blocked)		
	<u>This Month</u>	<u>Last Month</u>	<u>YTD</u>	<u>This Month</u>	<u>Last Month</u>	<u>YTD</u>
Number of Events	3,023	2,921	21,310	201	167	1,472
TMC Detection (min.)	0.07	0.07	0.09	0.20	0.23	0.28
TMC Verification (min.)	3.09	3.34	3.16	4.48	5.07	5.22
TMC Response (min.)	7.12	4.15	4.55	7.67	7.88	7.97
RR Dispatch Time (min.)	4.25	0.83	1.56	1.74	2.16	1.39
RR Response Time (min.)	2.83	3.33	3.00	5.95	5.73	6.59
Roadway Clearance (min.)				34.64	36.83	37.04
Event Clearance (min.)	40.73	44.69	54.91	55.67	51.60	52.72
# of Events w/ RR/SIRV	2,878	2,782	20,298	197	164	1,442
RR/SIRV Responses	2,976	2,869	20,982	258	213	1,823
RR/SIRV Activities	3,167	3,051	22,282	287	248	2,128

Incident Clearance TimeLine



Traffic Event(Non-Lane Blockage) Time-Line



■ Avg. TMC Detection Time	■ Avg. Time from TMC Response to Roadway Clearance*
■ Avg. Time from TMC Detection to TMC Verification	■ Avg. Time from Roadway Clearance to Incident/Event Clearance**
■ Avg. Time from TMC Verification to TMC Response	

* Roadway clearance equals all travel lanes open

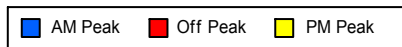
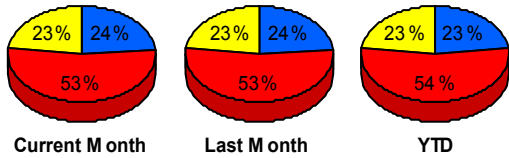
** Incident clearance equals time when last responder has left the scene

Performance Measures by Peak Period

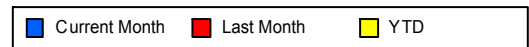
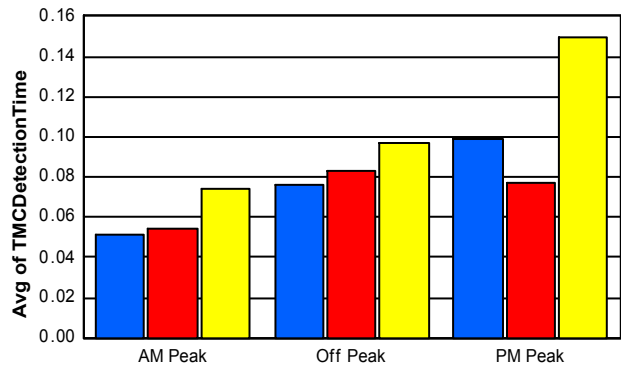
Note: AM peak period is defined as 6am to 10am and PM peak period is defined as 3pm to 7pm.

	AM Peak			Off Peak			PM Peak		
	<u>Current Month</u>	<u>Last Month</u>	<u>YTD</u>	<u>Current Month</u>	<u>Last Month</u>	<u>YTD</u>	<u>Current Month</u>	<u>Last Month</u>	<u>YTD</u>
Number of Events	763	730	5,271	1,709	1,647	12,239	752	711	5,272
Number of Incidents	55	36	372	95	95	733	51	36	367
TMC Detection (min.)	0.05	0.05	0.07	0.08	0.08	0.10	0.10	0.08	0.15
TMC Verification (min.)	2.62	2.58	2.24	3.20	3.61	3.48	3.71	3.90	3.90
TMC Response (min.)	3.68	3.70	3.30	4.04	4.67	4.74	17.73	4.32	6.34
RR Dispatch Time (min.)	1.19	0.56	0.65	0.98	1.07	1.39	14.01	0.87	2.81
RR Response Time (min.)	2.49	3.16	2.66	3.06	3.61	3.36	3.52	3.45	3.55
Event Clearance (min.)	36.49	39.45	45.61	46.56	46.92	64.85	35.78	46.51	40.52
Roadway Clearance (min.)	27.39	32.00	33.32	40.12	38.30	41.88	32.27	37.77	31.15
Incident Clearance (min.)	48.28	44.65	49.77	60.55	52.80	57.25	54.53	55.36	46.66
# of Events w/ RR/SIRV	729	701	5,087	1,627	1,563	11,568	719	682	5,085
RR/SIRV Responses	756	731	5,330	1,720	1,646	12,178	758	705	5,297
RR/SIRV Activities	812	779	5,660	1,855	1,770	13,134	787	750	5,616

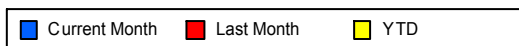
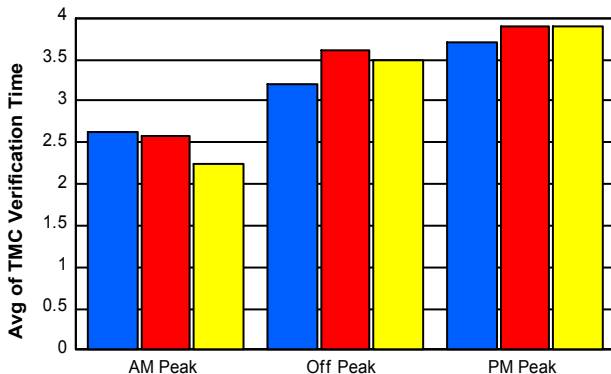
Number of Events / Peak Period



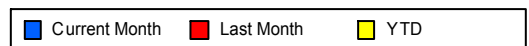
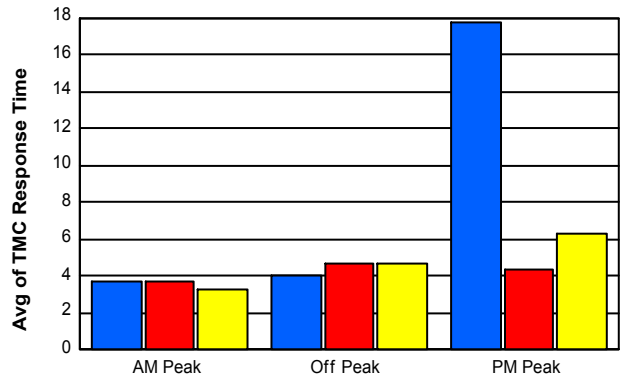
TMC Detection Time



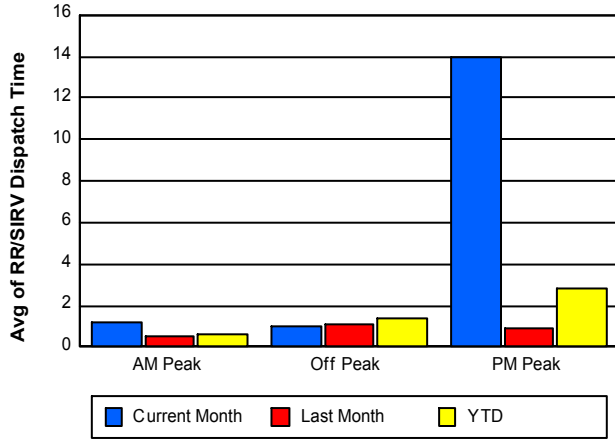
TMC Verification Time



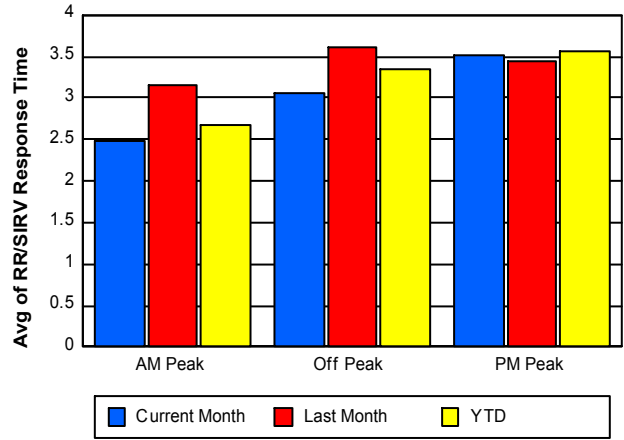
TMC Response Time



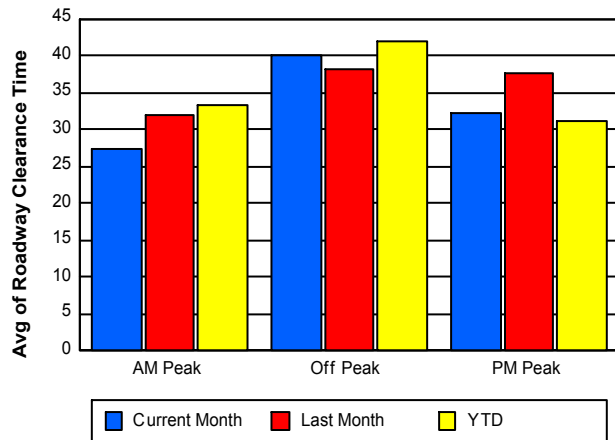
Road Ranger / SIRV Dispatch Time



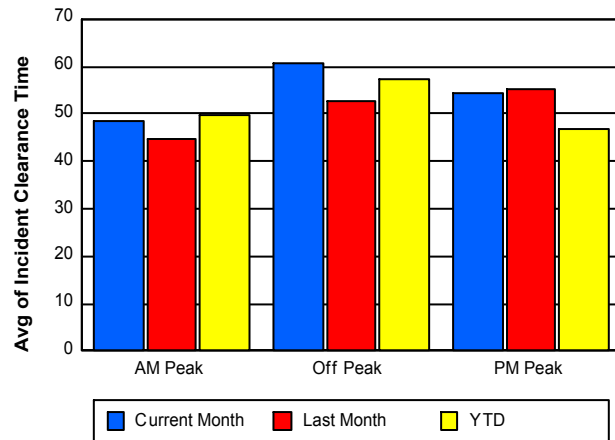
Road Ranger / SIRV Response Time



Roadway Clearance Time (2A)



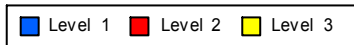
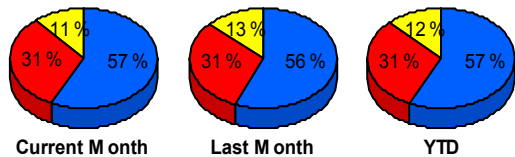
Incident Clearance Time (3B)



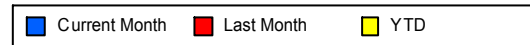
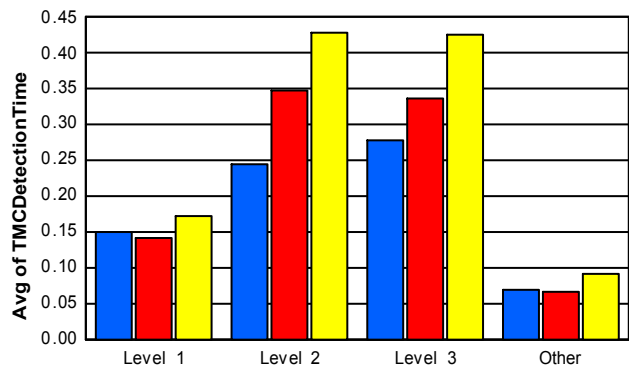
Performance Measures by Severity

	Level 1			Level 2			Level 3			Other		
	<u>This Month</u>	<u>Last Month</u>	<u>YTD</u>	<u>This Month</u>	<u>Last Month</u>	<u>YTD</u>	<u>This Month</u>	<u>Last Month</u>	<u>YTD</u>	<u>This Month</u>	<u>Last Month</u>	<u>YTD</u>
Number of Events	115	94	840	63	51	451	23	22	181	3,023	2,921	21,310
Number of Incidents	115	94	840	63	51	451	23	22	181	0	0	0
TMC Detection (min.)	0.15	0.14	0.17	0.25	0.35	0.43	0.28	0.34	0.43	0.07	0.07	0.09
TMC Verification (min.)	2.40	2.97	3.31	7.62	6.37	8.23	6.29	11.08	6.61	3.09	3.34	3.16
TMC Response (min.)	4.75	4.40	5.24	11.66	11.52	11.15	11.41	14.31	12.91	7.12	4.15	4.55
RR Dispatch Time (min.)	1.85	0.92	1.05	1.34	3.86	1.60	2.36	3.46	2.50	4.25	0.83	1.56
RR Resp. Time (min.)	2.91	3.49	4.21	10.38	7.67	9.55	9.04	10.85	10.41	2.83	3.33	3.00
Event Clearance (min.)	33.29	30.00	32.20	73.09	61.55	68.77	119.81	120.80	107.93	40.73	44.69	54.91
Roadway Clear. (min.)	12.67	12.68	12.65	54.01	51.41	55.82	91.45	106.21	103.44			
Incident Clearance (min.)	33.29	30.00	32.20	73.09	61.55	68.77	119.81	120.80	107.93			
# of Events w/ RR/SIRV	113	92	826	62	51	449	22	21	167	2,878	2,782	20,298
RR/SIRV Responses	124	106	923	95	72	629	39	35	271	2,976	2,869	20,982
RR/SIRV Activities	143	125	1,079	101	79	729	43	44	320	3,167	3,051	22,282

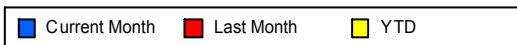
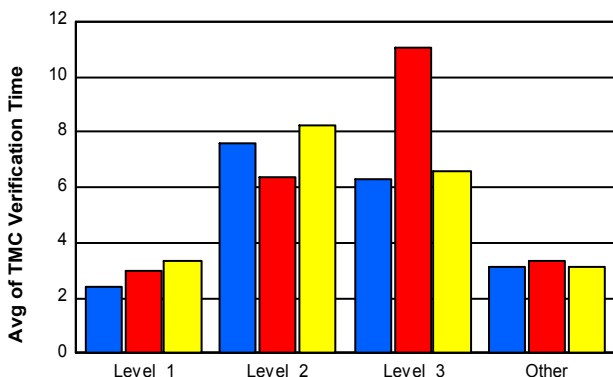
Number of Events / Severity



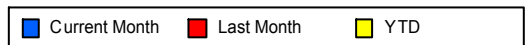
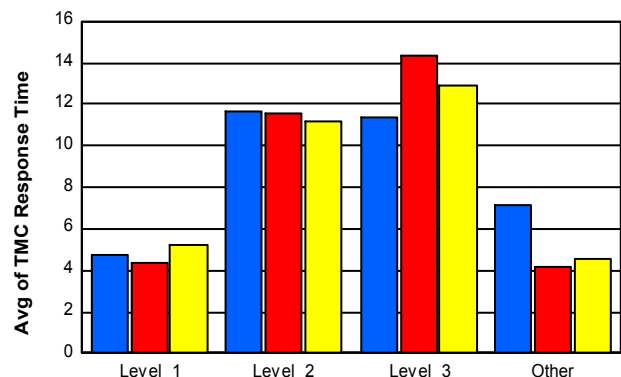
TMC Detection Time



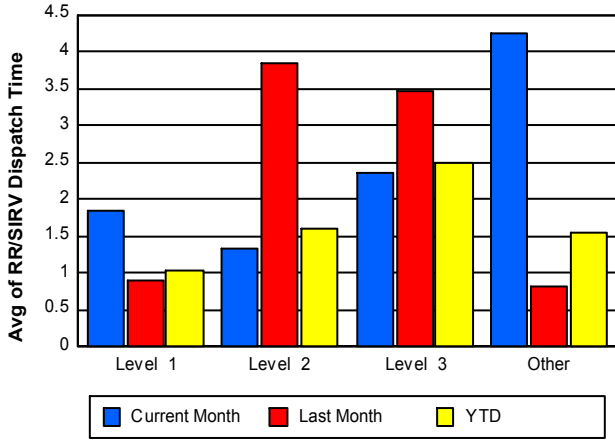
TMC Verification Time



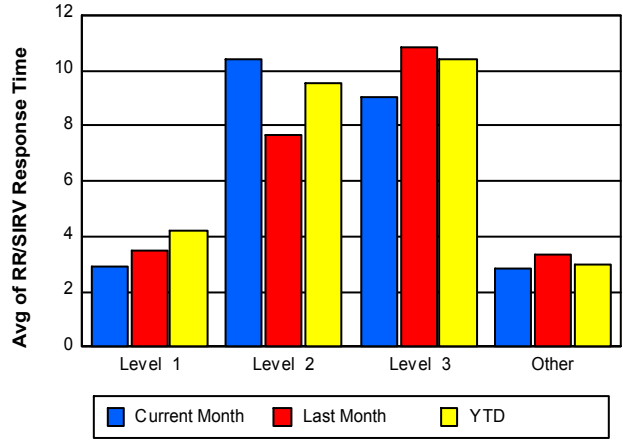
TMC Response Time



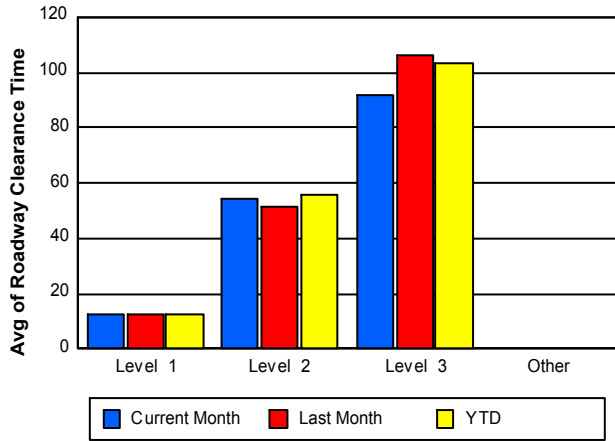
Road Ranger / SIRV Dispatch Time



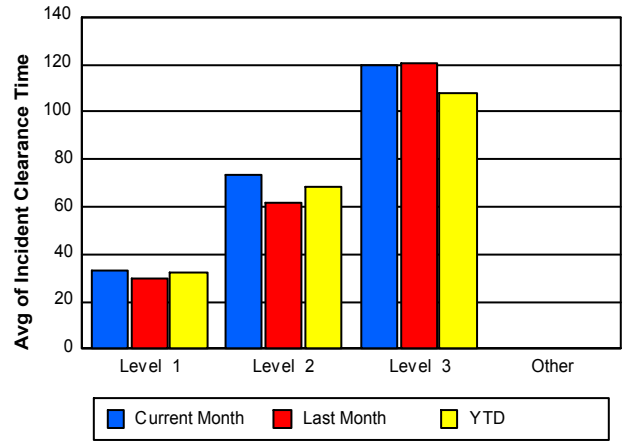
Road Ranger / SIRV Response Time



Roadway Clearance Time (2A)



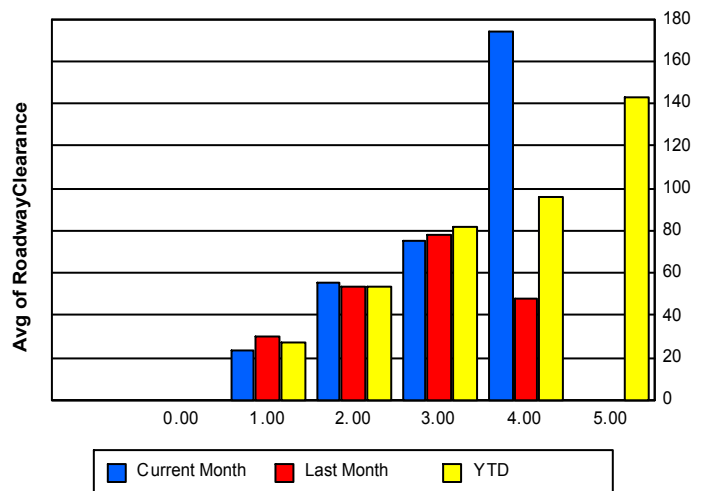
Incident Clearance Time (3B)



Roadway Clearance by Maximum Number of Lanes Blocked

	Current Month	Last Month	YTD
0			
1	23.31	29.67	27.28
2	55.48	52.96	53.60
3	74.81	77.72	82.13
4	173.57	47.57	95.80
5	0.00	0.00	142.88

Roadway Clearance Time (2A) by Max. # Lanes Blocked



Performance Measures by Roadway

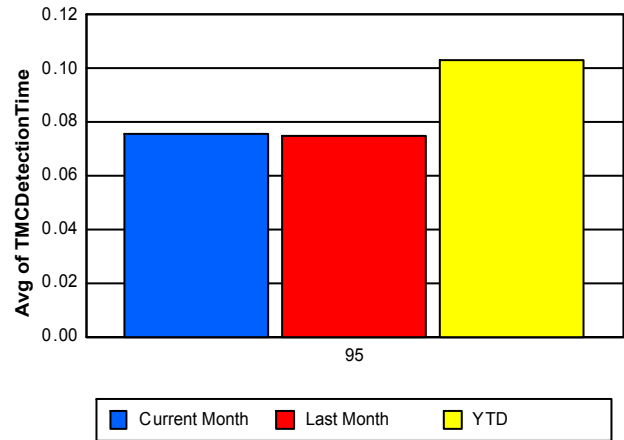
95

	<u>Current Month</u>	<u>Last Month</u>	<u>YTD</u>
Number of Events	3,224	3,088	22,782
Number of Incidents	201	167	1,472
TMC Detection (min.)	0.08	0.08	0.10
TMC Verification (min.)	3.18	3.43	3.29
TMC Response (min.)	7.16	4.36	4.78
RR Dispatch Time (min.)	4.09	0.90	1.55
RR Resp. Time (min.)	3.03	3.47	3.24
Event Clearance (min.)	41.66	45.06	54.77
Roadway Clear. (min.)	34.64	36.83	37.04
Incident Clearance (min.)	55.67	51.60	52.72
# of Events w/ RR/SIRV	3,075	2,946	21,740
RR/SIRV Responses	3,234	3,082	22,805
RR/SIRV Activities	3,454	3,299	24,410

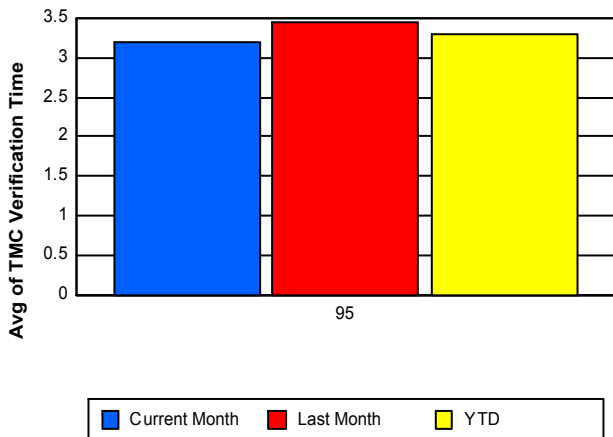
Number of Events / Roadway



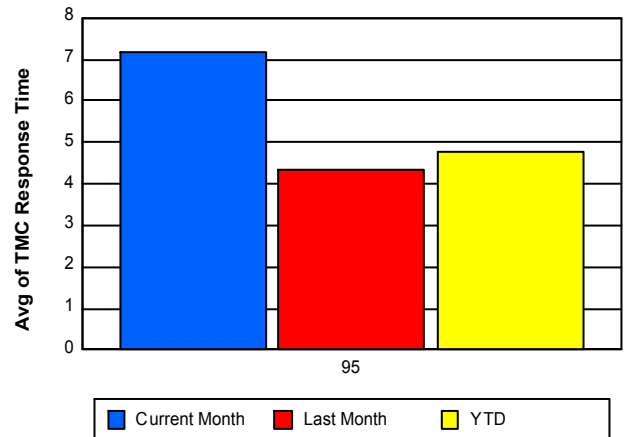
TMC Detection Time



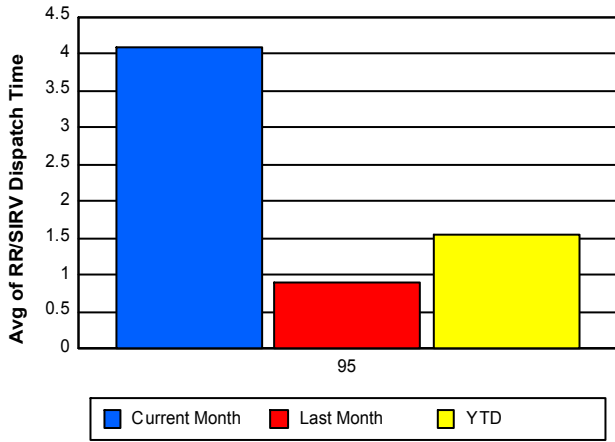
TMC Verification Time



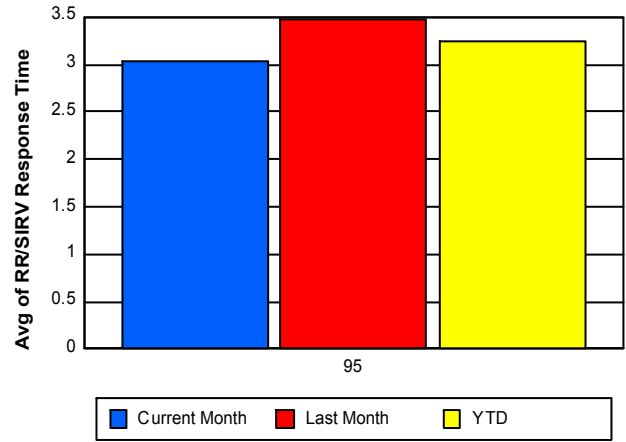
TMC Response Time



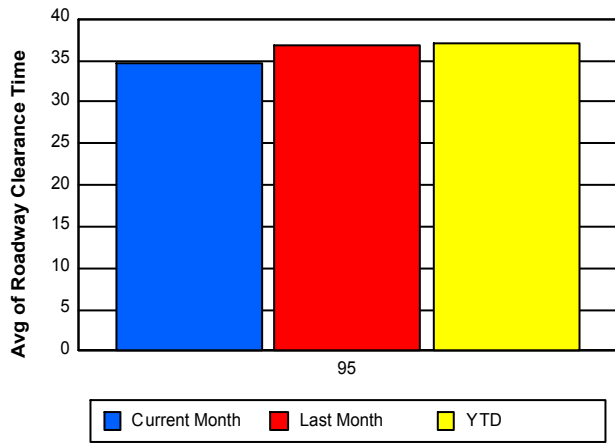
Road Ranger / SIRV Dispatch Time



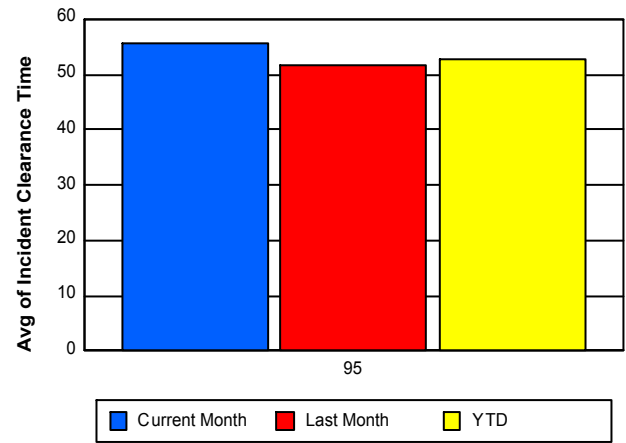
Road Ranger / SIRV Response Time



Roadway Clearance Time (2A)



Incident Clearance Time (3B)



Performance Measures by Event Type

Abandoned Vehicle

	<u>Current Month</u>	<u>Last Month</u>	<u>YTD</u>
Number of Events	560	556	4,333
Number of Incidents	1	1	18
TMC Detection (min.)	0.02	0.01	0.02
TMC Verification (min.)	1.06	1.20	0.40
TMC Response (min.)	21.30	2.73	6.47
RR Dispatch Time (min.)	20.21	1.12	5.54
RR Response Time (min.)	1.09	1.61	0.93
Event Clearance (min.)	139.13	158.76	202.79
Roadway Clearance (min.)	9.62	30.12	18.48
Incident Clearance (min.)	16.40	21.05	126.31
# of Events w/ RR/SIRV	478	461	3,535
RR/SIRV Assists	496	471	3,684
RR/SIRV Activities	515	486	3,812

Accident

	<u>Current Month</u>	<u>Last Month</u>	<u>YTD</u>
Number of Events	253	241	1,904
Number of Incidents	122	85	796
TMC Detection (min.)	0.21	0.24	0.36
TMC Verification (min.)	4.58	6.25	6.00
TMC Response (min.)	6.88	8.00	7.94
RR Dispatch Time (min.)	1.27	1.53	1.20
RR Response Time (min.)	5.64	6.47	6.75
Event Clearance (min.)	56.41	52.35	51.45
Roadway Clearance (min.)	44.58	46.88	46.88
Incident Clearance (min.)	72.91	70.29	68.74
# of Events w/ RR/SIRV	247	238	1,866
RR/SIRV Assists	307	289	2,235
RR/SIRV Activities	330	327	2,502

Congestion

	<u>Current Month</u>	<u>Last Month</u>	<u>YTD</u>
Number of Events	11	8	49
Number of Incidents	0	1	3
TMC Detection (min.)	0.09	0.05	0.04
TMC Verification (min.)	0.34	3.70	2.82
TMC Response (min.)	14.96	20.61	13.37
RR Dispatch Time (min.)	1.16	2.67	6.17
RR Response Time (min.)	13.50	17.94	11.48
Event Clearance (min.)	31.33	29.81	40.28
Roadway Clearance (min.)		3.15	52.32
Incident Clearance (min.)		43.75	79.64
# of Events w/ RR/SIRV	3	3	22
RR/SIRV Assists	3	3	26
RR/SIRV Activities	3	3	27

Debris on Roadway

	<u>Current Month</u>	<u>Last Month</u>	<u>YTD</u>
Number of Events	212	197	1,579
Number of Incidents	24	16	200
TMC Detection (min.)	0.17	0.21	0.20
TMC Verification (min.)	7.24	7.37	7.12
TMC Response (min.)	7.13	7.45	7.27
RR Dispatch Time (min.)	1.42	1.24	1.19
RR Response Time (min.)	5.71	6.22	6.09
Event Clearance (min.)	11.91	10.80	11.28
Roadway Clearance (min.)	11.21	7.99	11.52
Incident Clearance (min.)	14.61	14.29	13.01
# of Events w/ RR/SIRV	212	196	1,573
RR/SIRV Assists	221	200	1,629
RR/SIRV Activities	223	203	1,662

Disabled Vehicle

	<u>Current Month</u>	<u>Last Month</u>	<u>YTD</u>
Number of Events	2,117	2,023	14,492
Number of Incidents	47	56	392
TMC Detection (min.)	0.05	0.06	0.08
TMC Verification (min.)	3.08	3.34	3.36
TMC Response (min.)	3.89	3.88	3.60
RR Dispatch Time (min.)	1.13	0.73	0.66
RR Response Time (min.)	2.76	3.16	2.95
Event Clearance (min.)	17.74	16.95	16.63
Roadway Clearance (min.)	19.52	26.41	24.14
Incident Clearance (min.)	32.37	31.94	34.65
# of Events w/ RR/SIRV	2,075	1,994	14,367
RR/SIRV Assists	2,142	2,061	14,814
RR/SIRV Activities	2,311	2,220	15,974

Emergency Vehicles

	<u>Current Month</u>	<u>YTD</u>
Number of Events	3	8
Number of Incidents	1	4
TMC Detection (min.)	0.33	0.23
TMC Verification (min.)	1.22	3.42
TMC Response (min.)	1.19	3.88
RR Dispatch Time (min.)	1.02	0.62
RR Response Time (min.)	0.17	3.26
Event Clearance (min.)	20.86	18.27
Roadway Clearance (min.)	7.07	13.50
Incident Clearance (min.)	10.60	15.56
# of Events w/ RR/SIRV	3	7
RR/SIRV Assists	3	7
RR/SIRV Activities	4	8

Off Ramp Backup

	<u>YTD</u>
Number of Events	2
Number of Incidents	0
TMC Detection (min.)	0.00
TMC Verification (min.)	0.00
TMC Response (min.)	5.67
RR Dispatch Time (min.)	0.40
RR Response Time (min.)	5.27
Event Clearance (min.)	19.78
Roadway Clearance (min.)	
Incident Clearance (min.)	
# of Events w/ RR/SIRV	1
RR/SIRV Assists	2
RR/SIRV Activities	2

Other

	<u>Current Month</u>	<u>Last Month</u>	<u>YTD</u>
Number of Events	41	39	233
Number of Incidents	1	1	7
TMC Detection (min.)	0.58	0.05	0.15
TMC Verification (min.)	4.36	3.95	5.27
TMC Response (min.)	6.40	8.37	8.47
RR Dispatch Time (min.)	0.86	1.22	1.01
RR Response Time (min.)	5.83	7.38	7.56
Event Clearance (min.)	18.70	16.71	17.63
Roadway Clearance (min.)	10.92	21.50	57.86
Incident Clearance (min.)	19.60	10.25	63.85
# of Events w/ RR/SIRV	31	30	199
RR/SIRV Assists	32	31	207
RR/SIRV Activities	37	32	217

Pedestrian

	<u>Current Month</u>	<u>Last Month</u>	<u>YTD</u>
Number of Events	18	14	113
Number of Incidents	0	0	1
TMC Detection (min.)	0.20	0.03	0.13
TMC Verification (min.)	5.54	0.20	2.37
TMC Response (min.)	6.11	0.37	3.08
RR Dispatch Time (min.)	1.52	0.32	0.40
RR Response Time (min.)	4.59	0.06	2.66
Event Clearance (min.)	14.62	19.58	14.58
Roadway Clearance (min.)			18.32
Incident Clearance (min.)			19.55
# of Events w/ RR/SIRV	17	14	109
RR/SIRV Assists	18	14	111
RR/SIRV Activities	18	14	113

Police Activity

	<u>Current Month</u>	<u>Last Month</u>	<u>YTD</u>
Number of Events	4	3	38
Number of Incidents	2	1	26
TMC Detection (min.)	0.35	0.41	0.18
TMC Verification (min.)	10.80	3.24	3.11
TMC Response (min.)	10.78	24.92	9.54
RR Dispatch Time (min.)	3.15	2.97	2.79
RR Response Time (min.)	7.63	21.95	6.81
Event Clearance (min.)	54.46	49.11	58.75
Roadway Clearance (min.)	78.57	65.23	66.81
Incident Clearance (min.)	82.05	65.00	76.68
# of Events w/ RR/SIRV	4	3	34
RR/SIRV Assists	4	4	47
RR/SIRV Activities	5	5	50

Road Work - Emergency

	<u>Current Month</u>	<u>Last Month</u>	<u>YTD</u>
Number of Events	3	4	22
Number of Incidents	3	3	20
TMC Detection (min.)	0.12	0.00	0.15
TMC Verification (min.)	2.39	0.00	4.07
TMC Response (min.)	16.74	1.40	9.43
RR Dispatch Time (min.)	0.81	0.47	2.47
RR Response Time (min.)	15.93	0.93	6.96
Event Clearance (min.)	70.29	52.61	60.47
Roadway Clearance (min.)	50.92	53.31	106.23
Incident Clearance (min.)	70.29	59.26	57.95
# of Events w/ RR/SIRV	3	4	20
RR/SIRV Assists	6	6	36
RR/SIRV Activities	6	6	36

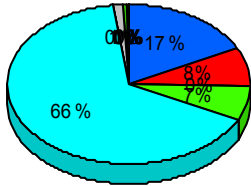
Visibility

	<u>YTD</u>
Number of Events	2
Number of Incidents	0
TMC Detection (min.)	0.00
TMC Verification (min.)	0.00
TMC Response (min.)	0.00
RR Dispatch Time (min.)	0.00
RR Response Time (min.)	0.00
Event Clearance (min.)	22.63
Roadway Clearance (min.)	
Incident Clearance (min.)	
# of Events w/ RR/SIRV	1
RR/SIRV Assists	1
RR/SIRV Activities	1

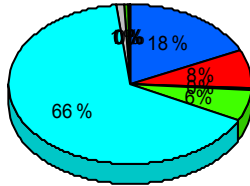
Weather

	<u>Current Month</u>	<u>Last Month</u>	<u>YTD</u>
Number of Events	2	3	7
Number of Incidents	0	3	5
TMC Detection (min.)	0.41	0.20	2.46
TMC Verification (min.)	50.57	8.87	18.25
TMC Response (min.)	50.52	26.62	30.15
RR Dispatch Time (min.)	0.16	7.34	3.72
RR Response Time (min.)	50.37	19.28	26.43
Event Clearance (min.)	94.51	102.38	99.08
Roadway Clearance (min.)		93.03	123.67
Incident Clearance (min.)		102.38	100.91
# of Events w/ RR/SIRV	2	3	6
RR/SIRV Assists	2	3	6
RR/SIRV Activities	2	3	6

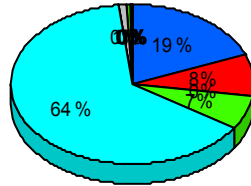
Number of Events / Event Type



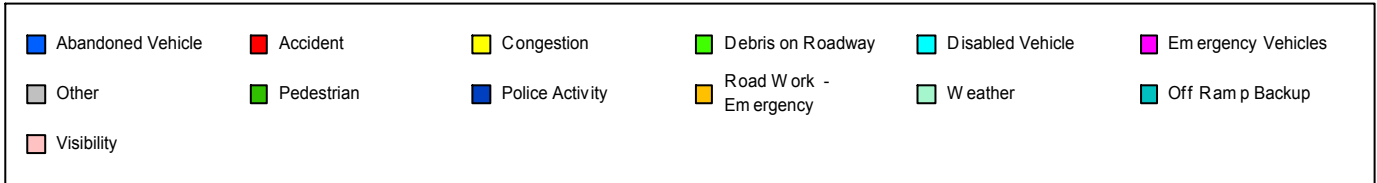
Current Month



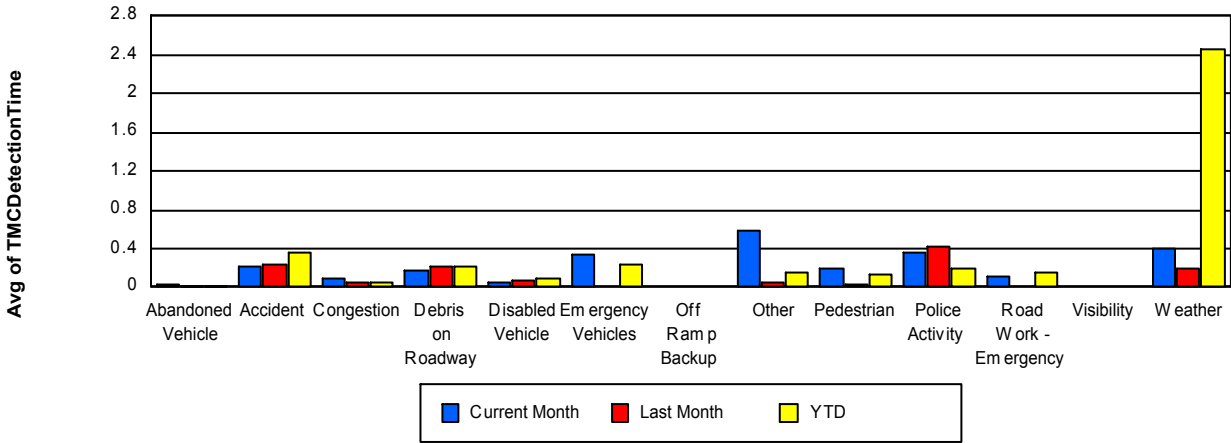
Last Month



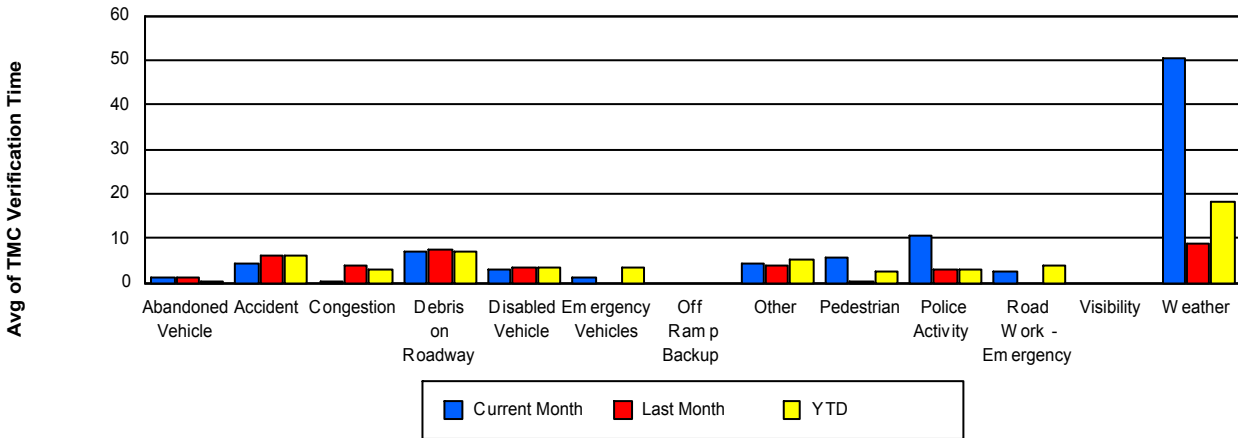
YTD



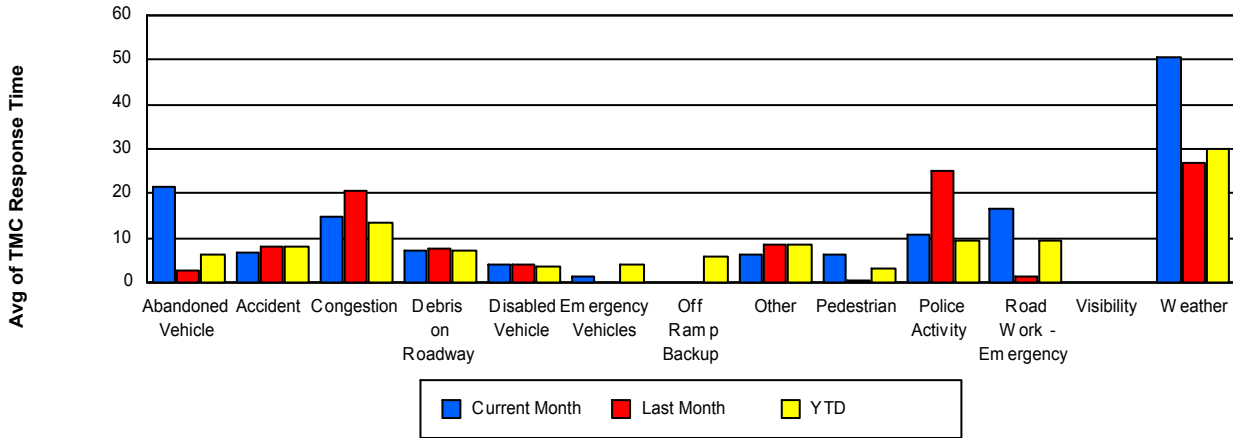
TMC Detection Time



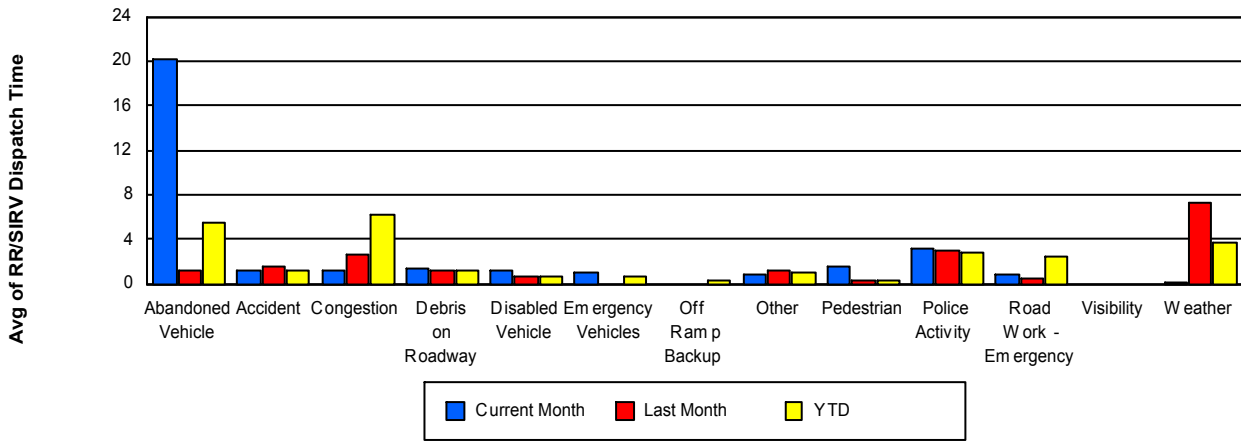
TMC Verification Time



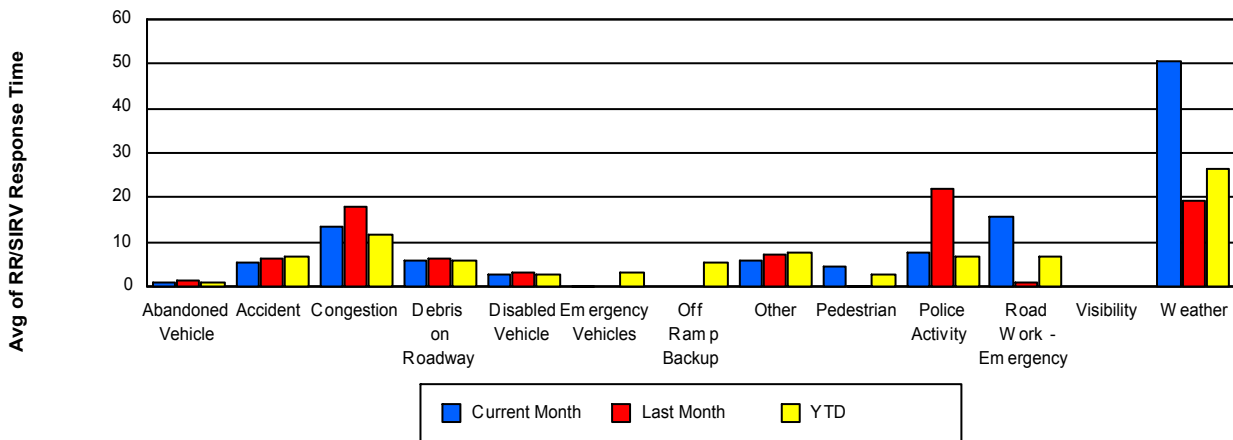
TMC Response Time



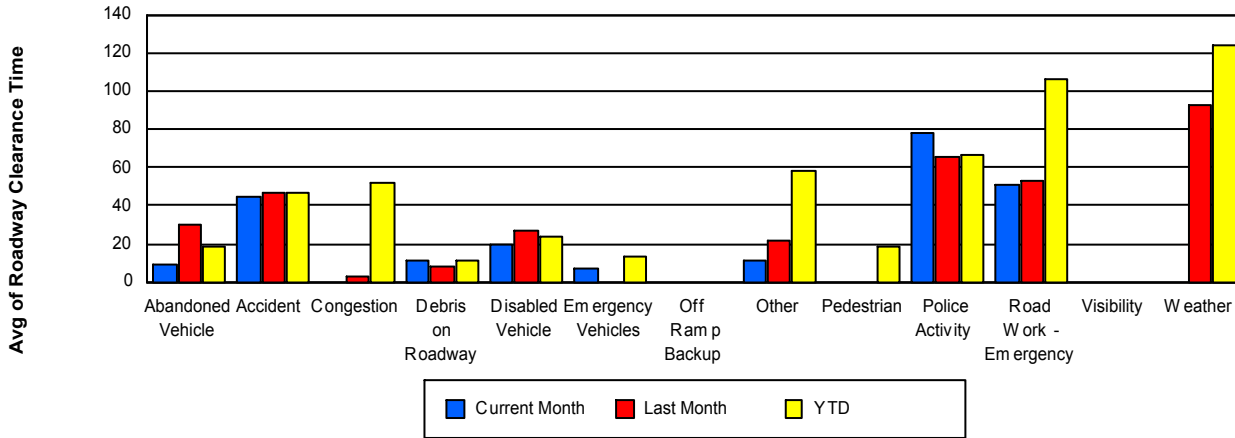
Road Ranger / SIRV Dispatch Time



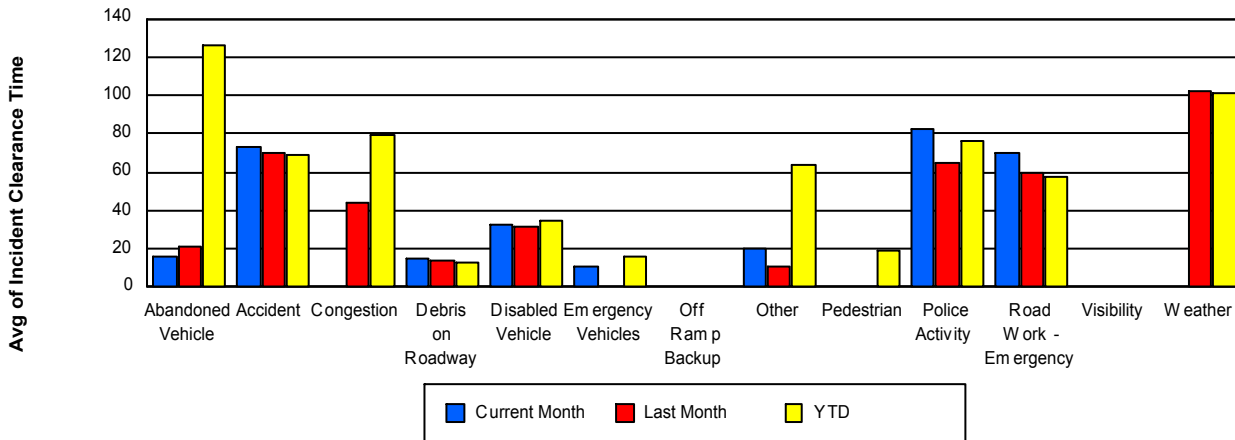
Road Ranger / SIRV Response Time



Roadway Clearance Time (2A)



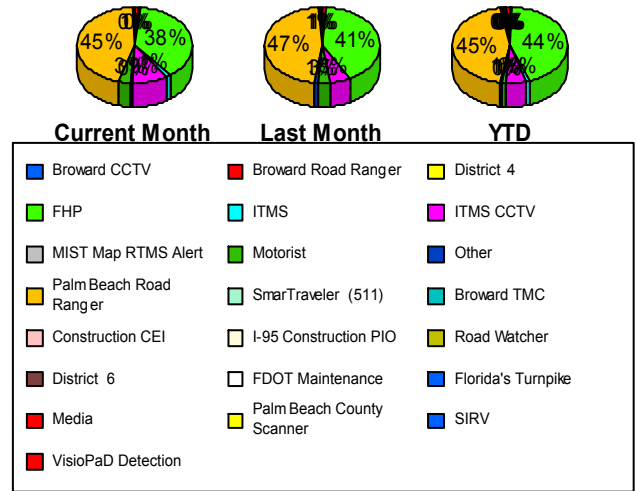
Incident Clearance Time (3B)



Incident Detection Methods

	Current Month	Last Month	YTD
Broward CCTV	0	0	1
Broward Road Ra	2	2	7
Broward TMC	0	0	3
Construction CEI	0	0	3
District 4	1	0	1
FHP	76	68	643
I-95 Construction	0	1	5
ITMS	3	0	15
ITMS CCTV	19	10	82
Media	0	0	15
MIST Map RTMS	1	0	1
Motorist	7	5	16
Other	0	2	8
Palm Beach Coun	0	0	1
Palm Beach Road	91	78	656
Road Watcher	0	1	1
SIRV	0	0	1
SmarTraveler (511	1	0	13
Total	201	167	1,472

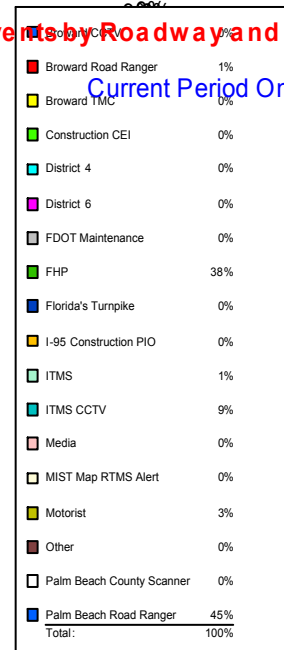
Total Incidents by Detection Method



Incident Detection Methods by Roadway

		Current Month	Last Month	YTD
95	Broward CCTV	0	0	1
	Broward Road Ra	2	2	7
	Broward TMC	0	0	3
	Construction CEI	0	0	3
	District 4	1	0	1
	FHP	76	68	643
	I-95 Construction	0	1	5
	ITMS	3	0	15
	ITMS CCTV	19	10	82
	Media	0	0	15
	MIST Map RTMS	1	0	1
	Motorist	7	5	16
	Other	0	2	8
	Palm Beach Coun	0	0	1
	Palm Beach Road	91	78	656
	Road Watcher	0	1	1
SIRV	0	0	1	
SmarTraveler (511)	1	0	13	
Total	201	167	1,472	
Total	201	167	1,472	

Total Events by Roadway and Detection Method

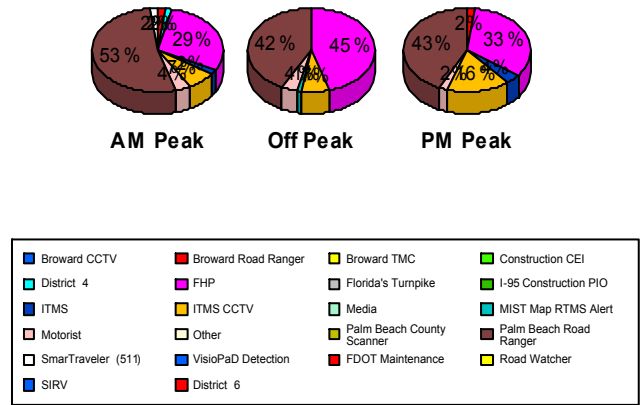


Incident Detection Methods by Peak Period

		Current Month	Last Month	YTD
AM Peak	Broward Road Ra	1	0	1
	Construction CEI	0	0	1
	District 4	1	0	1
	FHP	16	9	136
	I-95 Construction	0	0	2
	ITMS	1	0	3
	ITMS CCTV	4	2	23
	Media	0	0	2
	Motorist	2	0	2
	Palm Beach Road	29	25	197
	SmarTraveler (511)	1	0	4
	Total	55	36	372
	Off Peak	Broward Road Ra	0	2
Broward TMC		0	0	1
Construction CEI		0	0	1
FHP		43	46	372
I-95 Construction		0	1	3
ITMS		0	0	8
ITMS CCTV		7	5	33
Media		0	0	3
MIST Map RTMS		1	0	1
Motorist		4	2	9
Other		0	2	5
Palm Beach Coun		0	0	1
Palm Beach Road		40	37	287
SIRV		0	0	1
SmarTraveler (511)		0	0	4
Total	95	95	733	
PM Peak	Broward CCTV	0	0	1
	Broward Road Ra	1	0	2
	Broward TMC	0	0	2

Total Events by Roadway and Detection Method

Current Period Only



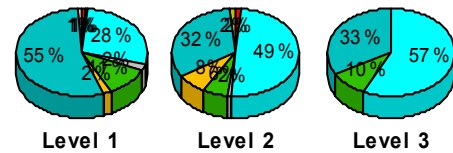
		Current Month	Last Month	YTD
PM Peak	Construction CEI	0	0	1
	FHP	17	13	135
	ITMS	2	0	4
	ITMS CCTV	8	3	26
	Media	0	0	10
	Motorist	1	3	5
	Other	0	0	3
	Palm Beach Road	22	16	172
	Road Watcher	0	1	1
	SmarTraveler (511)	0	0	5
	Total	51	36	367
Total	201	167	1,472	

Incident Detection Methods by Severity

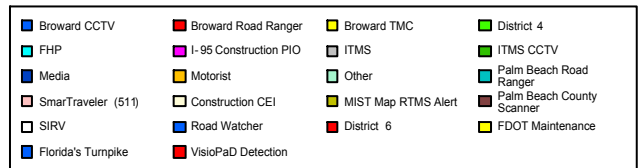
		Current Month	Last Month	YTD
Level 1	Broward CCTV	0	0	1
	Broward Road Ra	1	1	5
	Broward TMC	0	0	2
	District 4	1	0	1
	FHP	32	24	277
	I-95 Construction	0	0	1
	ITMS	2	0	7
	ITMS CCTV	13	5	50
	Media	0	0	7
	Motorist	2	3	7
	Other	0	2	6
	Palm Beach Road	63	55	455
	SmarTraveler (511)	1	0	7
	Total	115	90	826
Level 2	Broward Road Ra	1	1	2
	Construction CEI	0	0	2
	FHP	32	32	255

Total Events by Roadway and Detection Method

Current Period Only



Other



		Current Month	Last Month	YTD
Level 2	I-95 Construction	0	0	3
	ITMS	1	0	6
	ITMS CCTV	4	1	21
	Media	0	0	6
	MIST Map RTMS	1	0	1
	Motorist	5	2	9
	Other	0	0	2
	Palm Beach Coun	0	0	1
	Palm Beach Road	21	12	136
	SIRV	0	0	1
	SmarTraveler (511)	0	0	5
	Total	65	48	450
Level 3	Broward TMC	0	0	1
	Construction CEI	0	0	1
	FHP	12	12	111
	I-95 Construction	0	1	1
	ITMS	0	0	2
	ITMS CCTV	2	4	11
	Media	0	0	2
	Palm Beach Road	7	11	65
	Road Watcher	0	1	1
	SmarTraveler (511)	0	0	1
	Total	21	29	196
Total		201	167	1,472

Road Ranger / SIRV Performance Measures

Road Ranger / SIRV Performance By County

RR/SIRV Responses per County

Values presented are:
 - Total Events with a RR/SIRV Response
 - Total RR/SIRV Responses,
 - Total Activities Performed

	Current Month	Last Month	YTD
Palm Beach	3,075	2,946	21,740
	3,234	3,082	22,805
	3,454	3,299	24,410

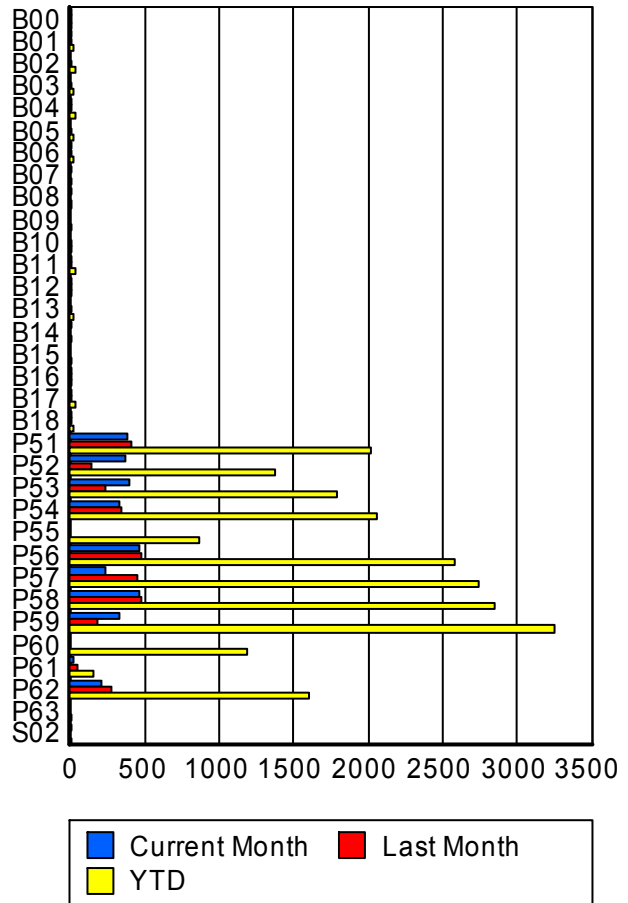


■ Palm Beach

Road Ranger / SIRV Performance By Truck

	Current Month	Last Month	YTD
B00	2	2	4
	2	2	4
	2	3	5
B01	5	4	25
	5	4	25
	5	4	27
B02	0	12	35
	0	12	35
	0	13	36
B03	0	5	17
	0	5	17
	0	5	17
B04	1	1	34
	1	1	34
	1	1	34
B05	0	13	27
	0	13	27
	0	13	27
B06	7	1	18
	7	1	18
	7	1	18
B07	3	0	11
	3	0	11
	3	0	12

RR/SIRV Responses per Truck



	Current Month	Last Month	YTD
B08	12 13 14	0 0 0	12 13 14
B09	0 0 0	0 0 0	1 1 1
B10	0 0 0	2 2 2	7 7 7
B11	8 8 9	9 9 10	32 32 35
B12	3 3 3	2 3 3	11 12 12
B13	0 0 0	1 1 1	18 18 19
B14	1 1 2	0 0 0	12 12 13
B15	0 0 0	0 0 0	10 10 10
B16	5 5 6	1 1 1	12 12 13
B17	2 2 2	7 7 9	35 35 37
B18	1 1 1	4 4 4	24 24 24
P51	372 376 401	403 407 435	1,995 2,018 2,156
P52	364 371 394	143 146 153	1,360 1,376 1,478
P53	389 397 427	233 233 248	1,767 1,787 1,911
P54	329 332 350	341 345 361	2,029 2,052 2,186

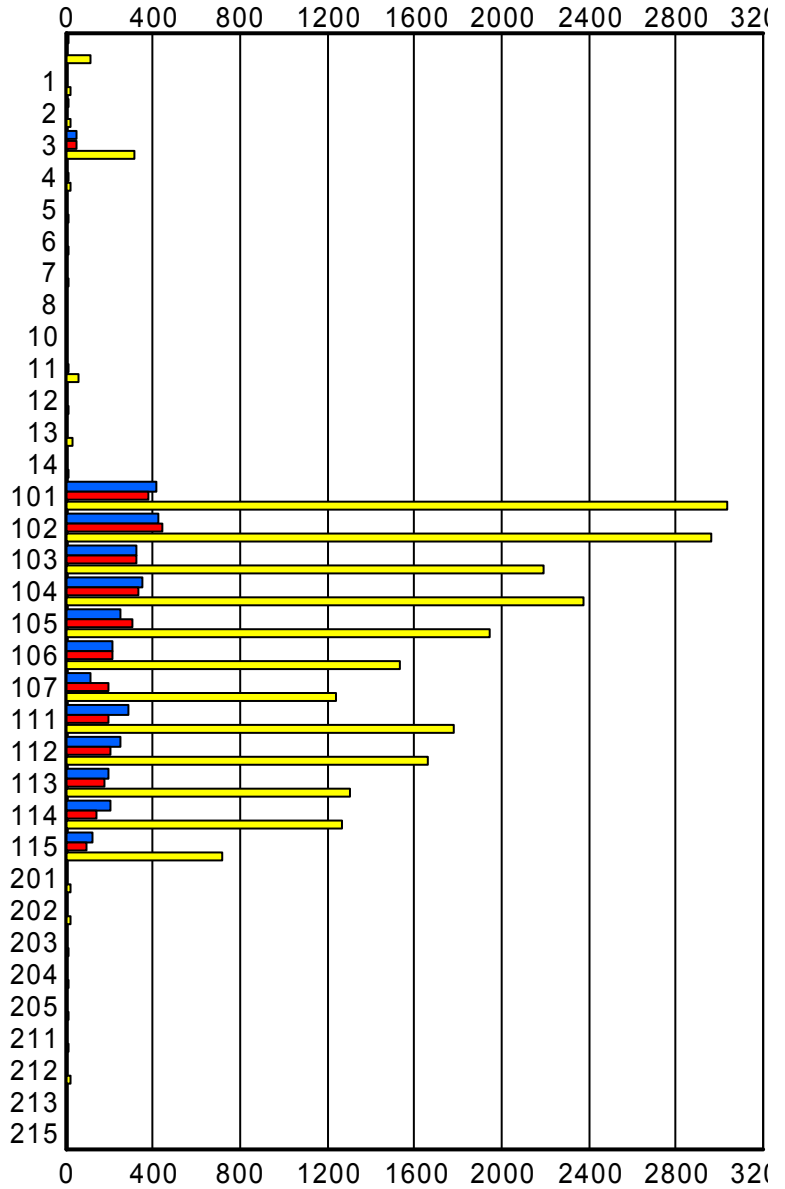
	Current Month	Last Month	YTD
P55	0	0	854
	0	0	870
	0	0	950
P56	456	466	2,563
	461	472	2,587
	493	502	2,758
P57	231	441	2,711
	232	444	2,738
	250	484	2,940
P58	451	468	2,812
	457	473	2,850
	492	506	3,048
P59	330	179	3,214
	335	180	3,250
	357	197	3,483
P60	0	0	1,162
	0	0	1,180
	0	0	1,270
P61	14	48	151
	14	48	152
	15	54	164
P62	206	266	1,580
	207	269	1,596
	219	289	1,703
P63	0	0	1
	0	0	1
	0	0	1
S02	1	0	1
	1	0	1
	1	0	1

Road Ranger / SIRV Performance By Beat

	Current Month	Last Month	YTD
	13	4	106
	14	4	109
	16	5	118
1	0	0	25
	0	0	26
	0	0	26
2	11	1	24
	11	1	24
	11	1	26
3	52	50	316
	53	51	319
	57	55	332
4	0	9	22
	0	9	23
	0	9	23
5	0	7	15
	0	7	15
	0	8	19
6	0	0	13
	0	0	13
	0	0	15
7	0	0	12
	0	0	12
	0	0	12
8	1	0	2
	1	0	2
	1	0	2
10	0	2	2
	0	2	2
	0	2	2
11	6	9	59
	6	9	59
	6	9	60
12	0	0	12
	0	0	12
	0	0	15
13	0	0	24
	0	0	27
	0	0	28
14	0	0	16
	0	0	16
	0	0	18

Values presented are:
 - Total Events with a RR/SIRV Response
 - Total RR/SIRV Responses,
 - Total Activities Performed

RR/SIRV Responses per Beat



■ Current Month
 ■ Last Month
 ■ YTD

	Current Month	Last Month	YTD
101	409	374	3,007
	414	377	3,038
	432	397	3,214
102	414	429	2,928
	420	439	2,965
	447	472	3,123
103	321	321	2,153
	327	326	2,194
	357	355	2,376
104	349	328	2,340
	352	332	2,378
	368	355	2,544
105	252	302	1,927
	255	306	1,949
	271	314	2,056
106	207	213	1,514
	211	214	1,531
	221	227	1,621
107	113	196	1,232
	113	197	1,241
	118	208	1,294
111	285	193	1,767
	288	193	1,783
	309	207	1,928
112	242	207	1,641
	248	208	1,662
	270	225	1,804
113	191	177	1,285
	193	178	1,302
	211	195	1,445
114	202	134	1,251
	206	137	1,270
	229	152	1,395
115	119	91	712
	120	92	719
	128	103	792
201	0	0	18
	0	0	18
	0	0	18
202	0	0	20
	0	0	20
	0	0	20
203	0	0	15
	0	0	15
	0	0	17

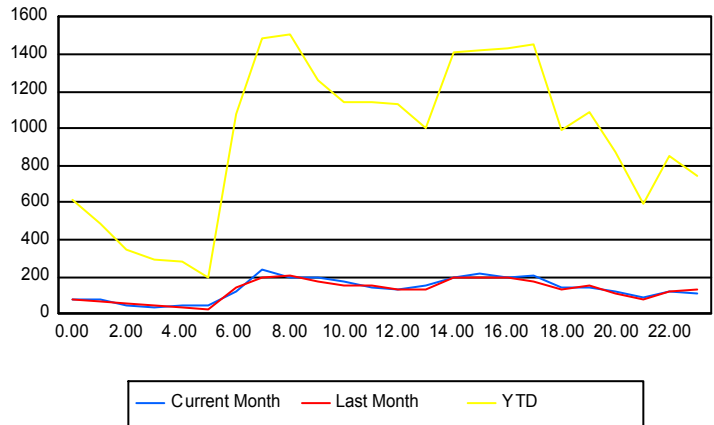
	Current Month	Last Month	YTD
204	0	0	10
	0	0	10
	0	0	13
205	0	0	16
	0	0	16
	0	0	18
211	0	0	10
	0	0	10
	0	0	10
212	0	0	17
	0	0	17
	0	0	17
213	2	0	7
	2	0	7
	2	0	8
215	0	0	1
	0	0	1
	0	0	1

Road Ranger / SIRV Performance By Time of Day

Values presented are:
 - Total Events with a RR/SIRV Response
 - Total RR/SIRV Responses,
 - Total Activities Performed

	Current Month	Last Month	YTD
12AM-1AM	74	68	576
	79	74	612
	87	81	669
1AM-2AM	68	57	449
	74	64	481
	81	70	531
2AM-3AM	45	52	330
	46	53	342
	52	57	369
3AM-4AM	40	42	273
	40	46	290
	50	56	324
4AM-5AM	41	33	256
	47	35	284
	58	42	320
5AM-6AM	30	24	168
	41	26	198
	46	30	224

Number of Responses / Hour of the Day



	Current Month	Last Month	YTD
6AM-7AM	110	140	1,010
	119	144	1,073
	127	149	1,140
7AM-8AM	231	195	1,434
	239	199	1,491
	255	209	1,582
8AM-9AM	195	199	1,436
	200	212	1,510
	217	232	1,604
9AM-10AM	193	167	1,207
	198	176	1,256
	213	189	1,334
10AM-11AM	163	146	1,088
	180	151	1,141
	198	164	1,229
11AM-12PM	144	140	1,090
	147	148	1,138
	158	154	1,197
12PM-1PM	128	133	1,086
	131	137	1,133
	137	143	1,209
1PM-2PM	149	121	955
	155	127	999
	165	131	1,064
2PM-3PM	189	182	1,335
	192	195	1,407
	197	213	1,497
3PM-4PM	208	194	1,370
	216	200	1,424
	225	211	1,503
4PM-5PM	190	189	1,373
	198	195	1,430
	207	210	1,521
5PM-6PM	195	173	1,399
	205	174	1,450
	214	184	1,526
6PM-7PM	126	126	943
	139	136	993
	141	145	1,066
7PM-8PM	132	155	1,044
	139	158	1,085
	144	168	1,169
8PM-9PM	118	101	840
	120	107	875
	123	112	938

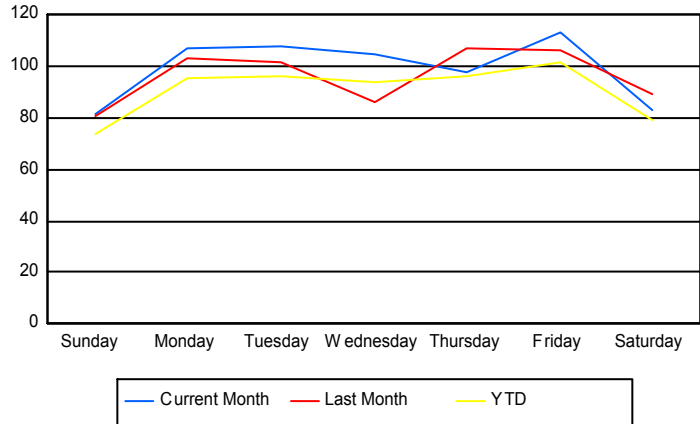
	Current Month	Last Month	YTD
9PM-10PM	85	76	559
	91	79	592
	98	82	634
10PM-11PM	114	110	807
	125	118	857
	135	128	956
11PM-12AM	107	123	712
	113	128	744
	126	139	804

Road Ranger / SIRV Performance By Day of Week

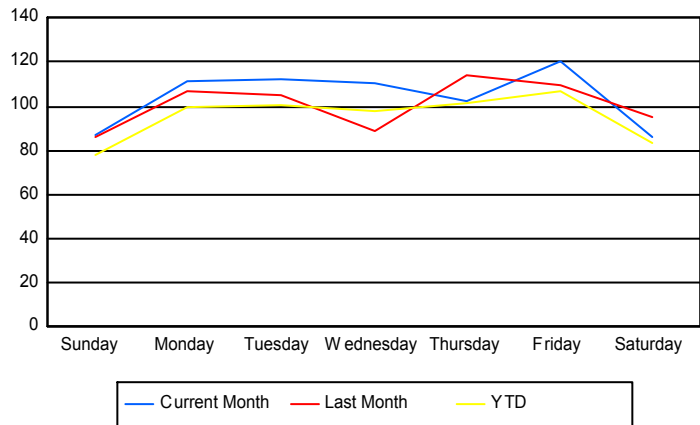
Values presented are:
 - Total Events with a RR/SIRV Response
 - Total RR/SIRV Responses,
 - Total Activities Performed

	Current Month	Last Month	YTD
Sunday	326	398	2,457
	346	424	2,582
	368	452	2,784
Monday	428	509	3,303
	445	529	3,442
	475	571	3,689
Tuesday	431	507	3,338
	450	524	3,473
	483	556	3,699
Wednesday	522	341	3,233
	548	351	3,366
	575	375	3,558
Thursday	482	421	3,330
	505	447	3,488
	531	488	3,725
Friday	564	423	3,505
	599	434	3,672
	652	452	3,927
Saturday	330	350	2,643
	341	373	2,782
	370	405	3,028

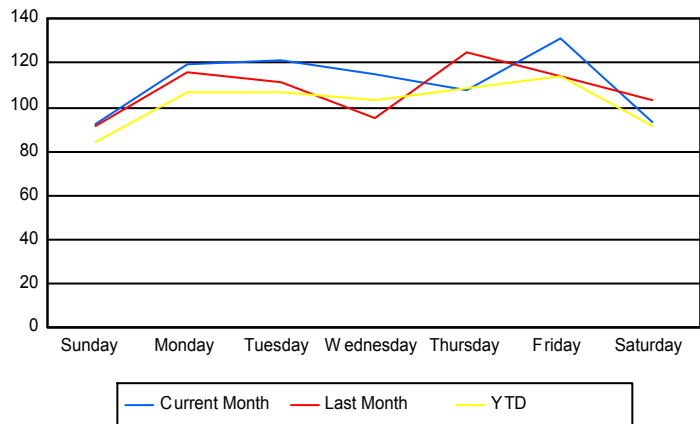
Avg # of events with a RR/SIRV Response per Day of the Week



Avg # of RR/SIRV Responses per Day of the Week



Avg # of RR/SIRV Activities Performed per Day of the Week



Road Ranger/SIRV Responses per Time of Day and Day of Week

