



Monthly Performance Measures Report Palm Beach County



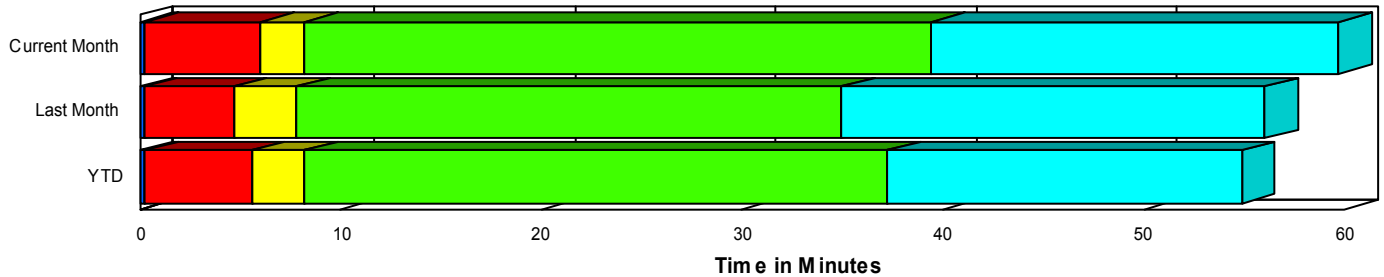
Created on:
October 08, 2007
12:28 pm

Period From Sep 1, 2007 to Sep 30, 2007

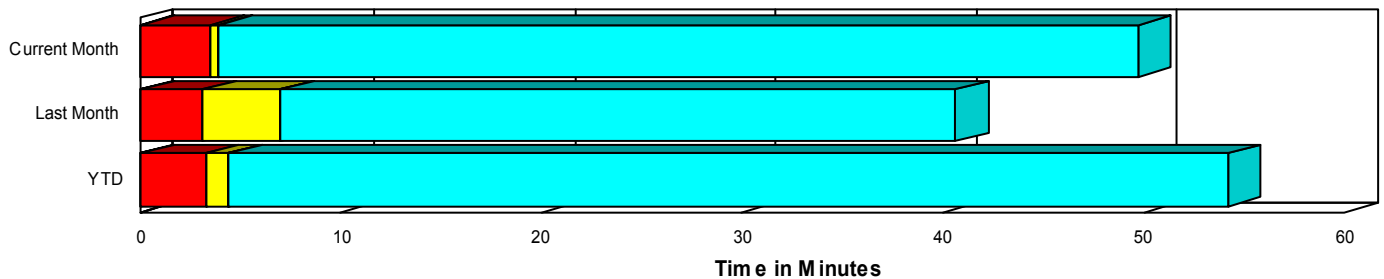
Performance Measures Summary

	Traffic Events (No Lanes Blocked)			Incidents (Lanes Blocked)		
	<u>This Month</u>	<u>Last Month</u>	<u>YTD</u>	<u>This Month</u>	<u>Last Month</u>	<u>YTD</u>
Number of Events	2,666	3,021	23,974	211	201	1,683
TMC Detection (min.)	0.07	0.07	0.09	0.22	0.20	0.27
TMC Verification (min.)	3.43	3.09	3.19	5.81	4.48	5.30
TMC Response (min.)	3.96	7.11	4.48	8.15	7.67	7.99
RR Dispatch Time (min.)	0.93	4.25	1.49	1.27	1.74	1.37
RR Response Time (min.)	3.03	2.83	3.00	6.90	5.95	6.63
Roadway Clearance (min.)				39.50	34.64	37.35
Event Clearance (min.)	49.83	40.74	54.35	59.59	55.67	53.58
# of Events w/ RR/SIRV	2,558	2,876	22,854	206	197	1,648
RR/SIRV Responses	2,646	2,974	23,626	259	258	2,082
RR/SIRV Activities	2,809	3,165	25,089	283	287	2,411

Incident Clearance TimeLine



Traffic Event(Non-Lane Blockage) Time-Line



<ul style="list-style-type: none"> ■ Avg. TMC Detection Time ■ Avg. Time from TMC Detection to TMC Verification ■ Avg. Time from TMC Verification to TMC Response 	<ul style="list-style-type: none"> ■ Avg. Time from TMC Response to Roadway Clearance* ■ Avg. Time from Roadway Clearance to Incident/Event Clearance**
---	--

* Roadway clearance equals all travel lanes open

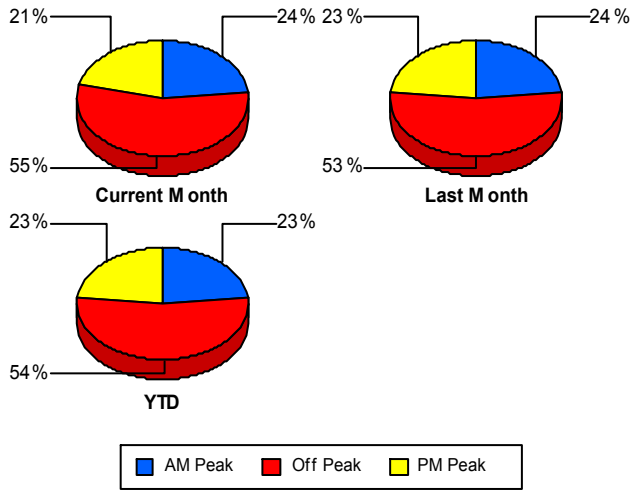
** Incident clearance equals time when last responder has left the scene

Performance Measures by Peak Period

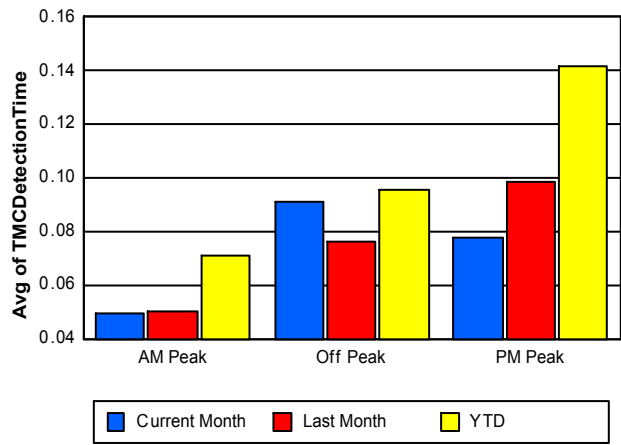
Note: AM peak period is defined as 6am to 10am and PM peak period is defined as 3pm to 7pm.

	AM Peak			Off Peak			PM Peak		
	<u>Current Month</u>	<u>Last Month</u>	<u>YTD</u>	<u>Current Month</u>	<u>Last Month</u>	<u>YTD</u>	<u>Current Month</u>	<u>Last Month</u>	<u>YTD</u>
Number of Events	683	762	5,953	1,583	1,708	13,821	611	752	5,883
Number of Incidents	54	55	426	121	95	854	36	51	403
TMC Detection (min.)	0.05	0.05	0.07	0.09	0.08	0.10	0.08	0.10	0.14
TMC Verification (min.)	2.95	2.62	2.33	4.15	3.18	3.56	2.89	3.71	3.80
TMC Response (min.)	3.73	3.65	3.35	4.73	4.03	4.74	3.69	17.73	6.07
RR Dispatch Time (min.)	1.14	1.19	0.70	1.01	0.98	1.34	0.62	14.01	2.58
RR Response Time (min.)	2.58	2.46	2.65	3.72	3.06	3.40	3.07	3.52	3.50
Event Clearance (min.)	47.24	36.50	45.80	50.35	46.57	63.19	54.76	35.78	42.00
Roadway Clearance (min.)	33.47	27.39	33.34	42.04	40.12	41.91	40.04	32.27	31.94
Incident Clearance (min.)	48.19	48.28	49.57	62.82	60.55	58.04	65.85	54.53	48.37
# of Events w/ RR/SIRV	657	728	5,743	1,523	1,626	13,090	584	719	5,669
RR/SIRV Responses	687	755	6,016	1,620	1,719	13,797	598	758	5,895
RR/SIRV Activities	740	811	6,399	1,736	1,854	14,869	616	787	6,232

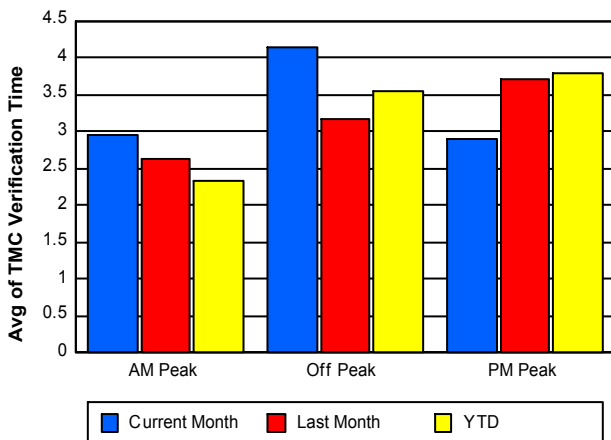
Number of Events / Peak Period



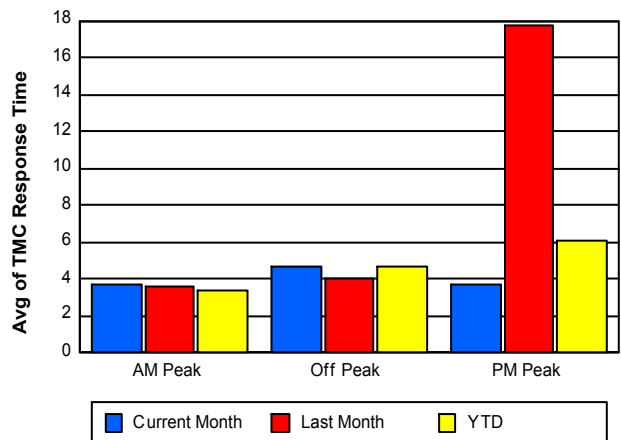
TMC Detection Time



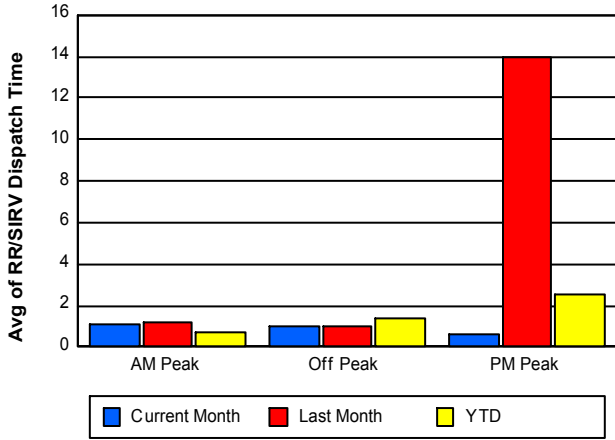
TMC Verification Time



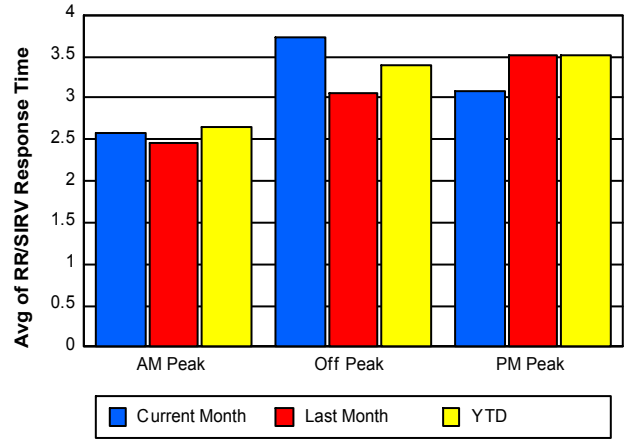
TMC Response Time



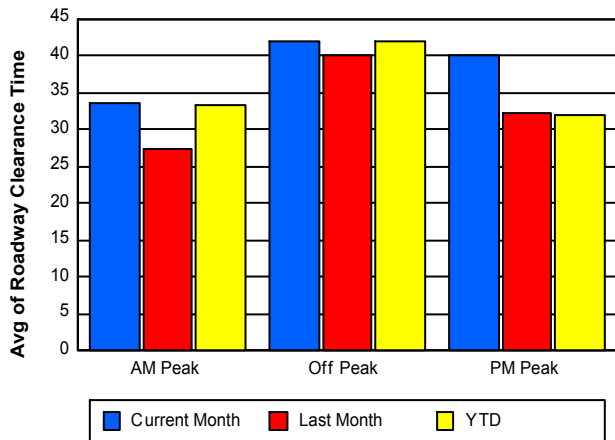
Road Ranger / SIRV Dispatch Time



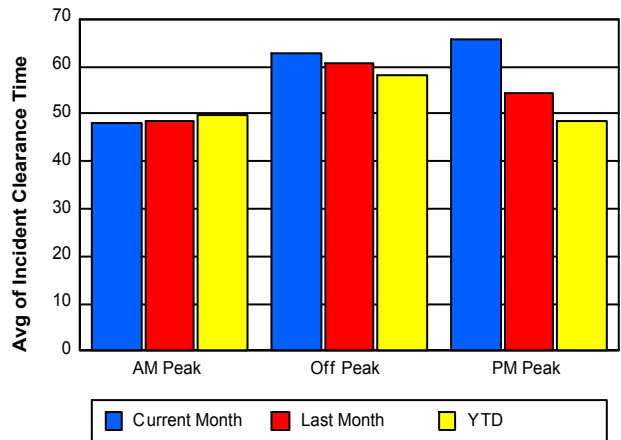
Road Ranger / SIRV Response Time



Roadway Clearance Time (2A)



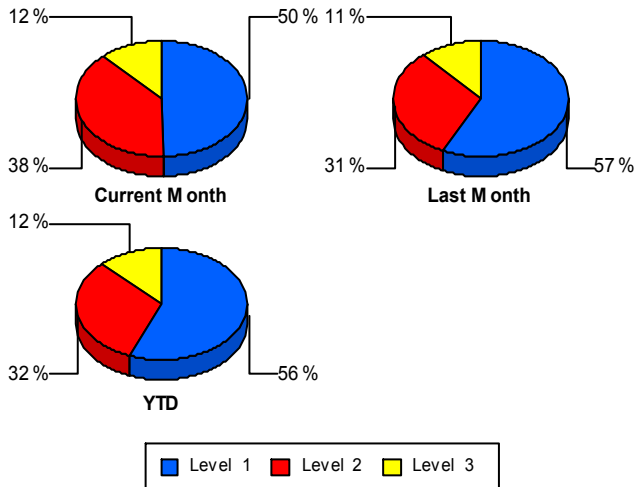
Incident Clearance Time (3B)



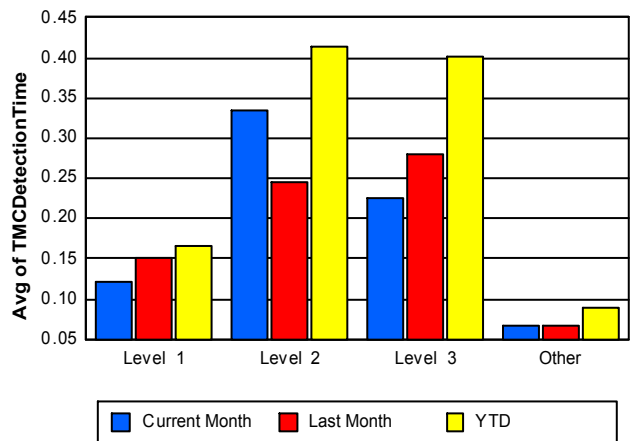
Performance Measures by Severity

	Level 1			Level 2			Level 3			Other		
	<u>This Month</u>	<u>Last Month</u>	<u>YTD</u>	<u>This Month</u>	<u>Last Month</u>	<u>YTD</u>	<u>This Month</u>	<u>Last Month</u>	<u>YTD</u>	<u>This Month</u>	<u>Last Month</u>	<u>YTD</u>
Number of Events	105	115	945	81	63	532	25	23	206	2,666	3,021	23,974
Number of Incidents	105	115	945	81	63	532	25	23	206	0	0	0
TMC Detection (min.)	0.12	0.15	0.17	0.33	0.25	0.42	0.23	0.28	0.40	0.07	0.07	0.09
TMC Verification (min.)	2.54	2.40	3.22	8.87	7.62	8.33	9.62	6.29	6.98	3.43	3.09	3.19
TMC Response (min.)	4.11	4.75	5.12	11.77	11.66	11.24	13.34	11.41	12.97	3.96	7.11	4.48
RR Dispatch Time (min.)	0.76	1.85	1.01	1.45	1.34	1.58	2.90	2.36	2.55	0.93	4.25	1.49
RR Resp. Time (min.)	3.39	2.91	4.12	10.31	10.38	9.67	10.44	9.04	10.42	3.03	2.83	3.00
Event Clearance (min.)	35.24	33.29	32.54	71.87	73.09	69.24	122.06	119.81	109.64	49.83	40.74	54.35
Roadway Clear. (min.)	13.24	12.67	12.72	58.68	54.01	56.26	87.71	91.45	101.53			
Incident Clearance (min.)	35.24	33.29	32.54	71.87	73.09	69.24	122.06	119.81	109.64			
# of Events w/ RR/SIRV	102	113	928	81	62	530	23	22	190	2,558	2,876	22,854
RR/SIRV Responses	119	124	1,042	108	95	737	32	39	303	2,646	2,974	23,626
RR/SIRV Activities	135	143	1,214	115	101	844	33	43	353	2,809	3,165	25,089

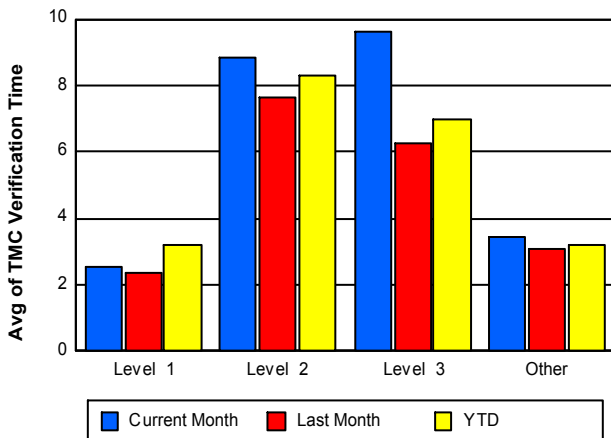
Number of Events / Severity



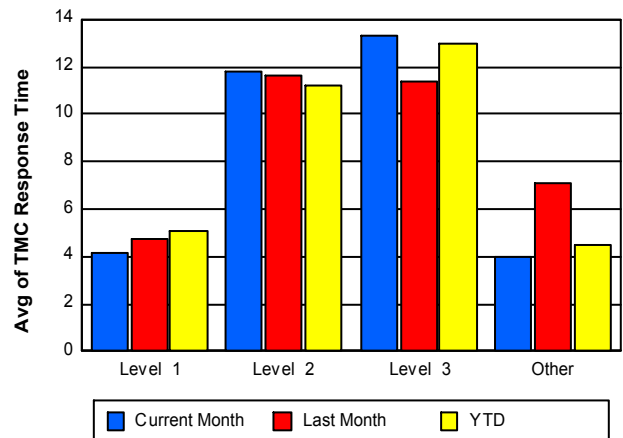
TMC Detection Time



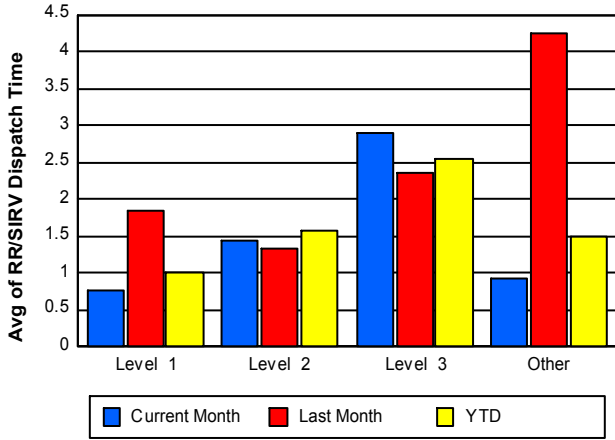
TMC Verification Time



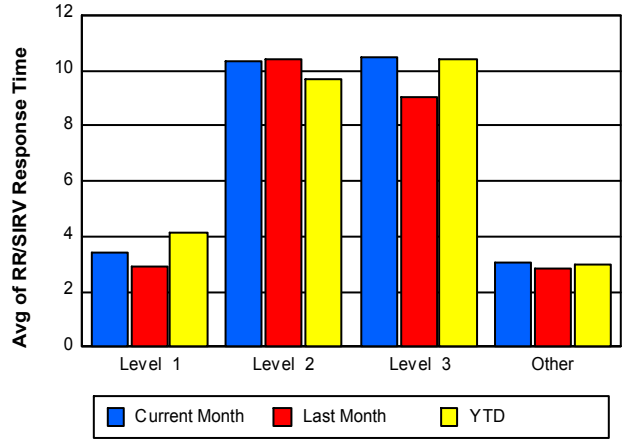
TMC Response Time



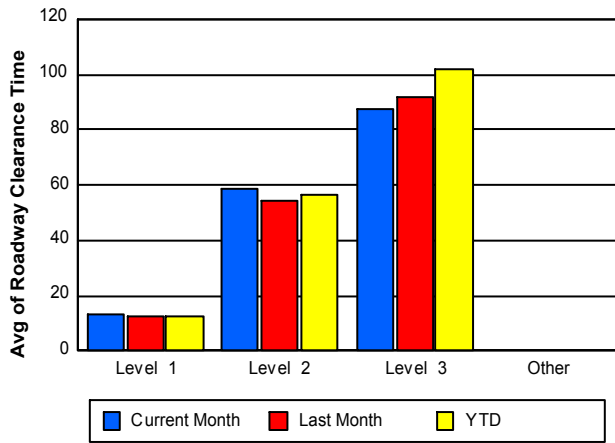
Road Ranger / SIRV Dispatch Time



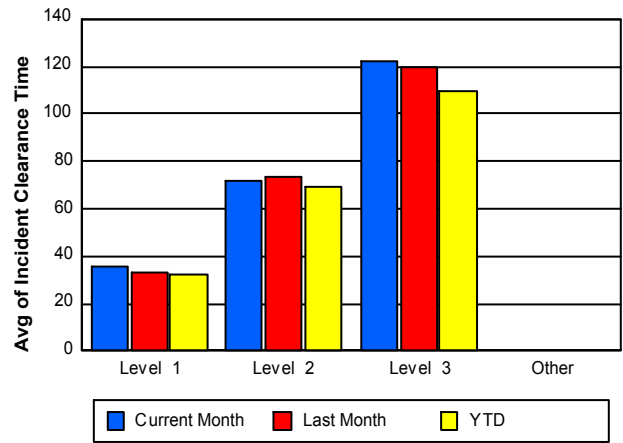
Road Ranger / SIRV Response Time



Roadway Clearance Time (2A)



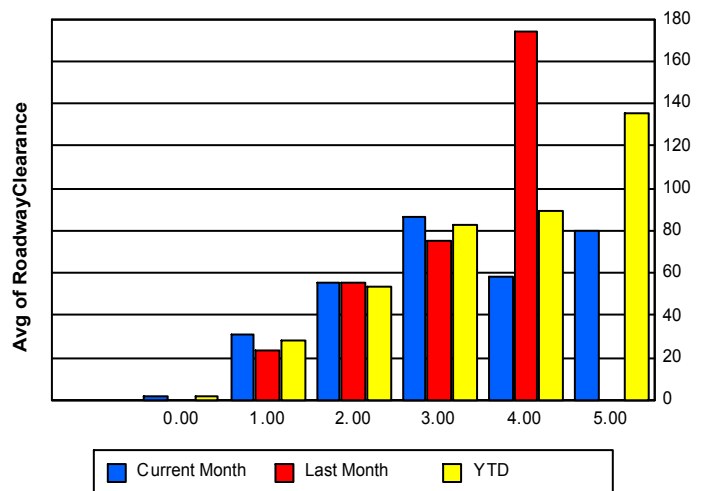
Incident Clearance Time (3B)



Roadway Clearance by Maximum Number of Lanes Blocked

	Current Month	Last Month	YTD
0	1.70		1.70
1	30.71	23.31	27.70
2	54.99	55.48	53.78
3	86.05	74.81	82.60
4	58.48	173.57	89.22
5	79.77	0.00	134.99

Roadway Clearance Time(2A)

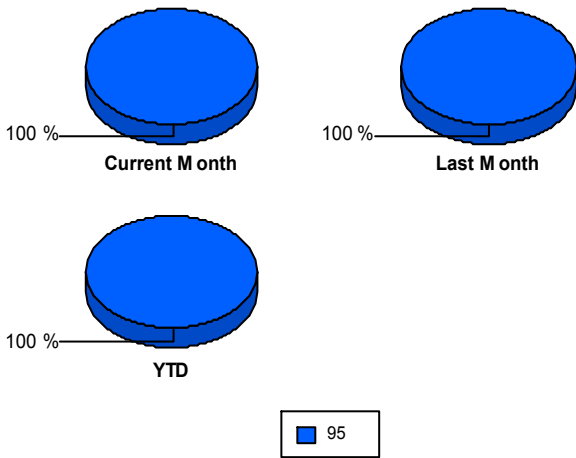


Performance Measures by Roadway

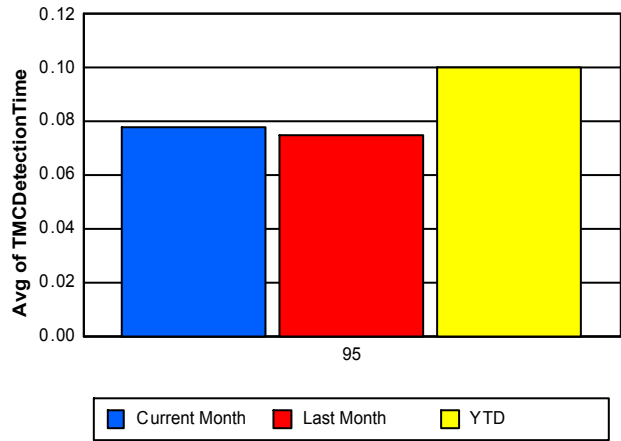
95

	<u>Current Month</u>	<u>Last Month</u>	<u>YTD</u>
Number of Events	2,877	3,222	25,657
Number of Incidents	211	201	1,683
TMC Detection (min.)	0.08	0.08	0.10
TMC Verification (min.)	3.60	3.17	3.33
TMC Response (min.)	4.27	7.15	4.72
RR Dispatch Time (min.)	0.96	4.09	1.48
RR Resp. Time (min.)	3.31	3.03	3.25
Event Clearance (min.)	50.55	41.67	54.30
Roadway Clear. (min.)	39.50	34.64	37.35
Incident Clearance (min.)	59.59	55.67	53.58
# of Events w/ RR/SIRV	2,764	3,073	24,502
RR/SIRV Responses	2,905	3,232	25,708
RR/SIRV Activities	3,092	3,452	27,500

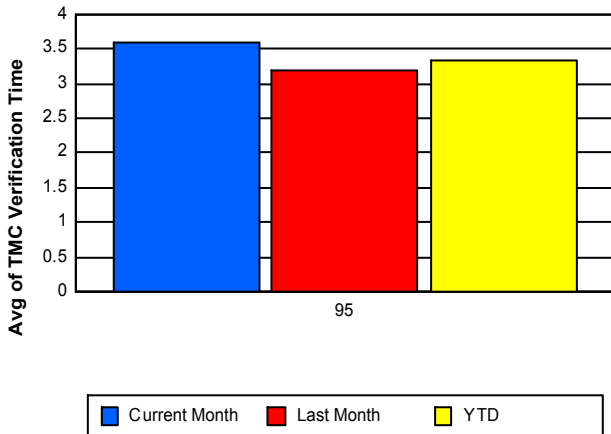
Number of Events / Roadway



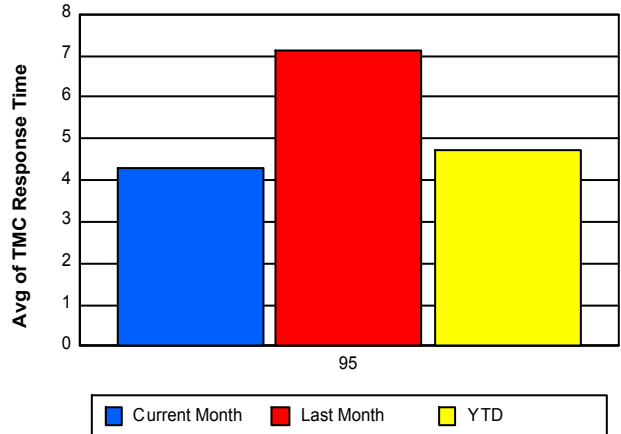
TMC Detection Time



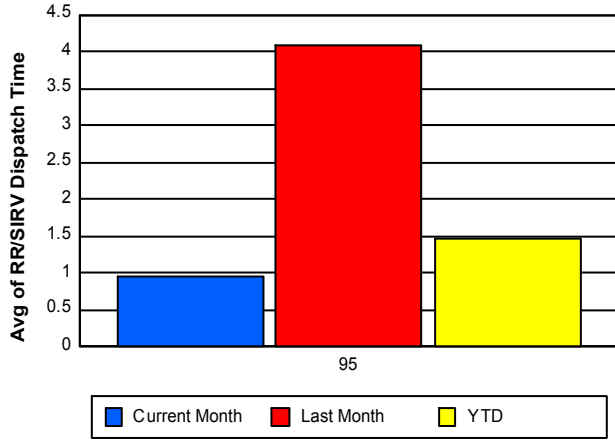
TMC Verification Time



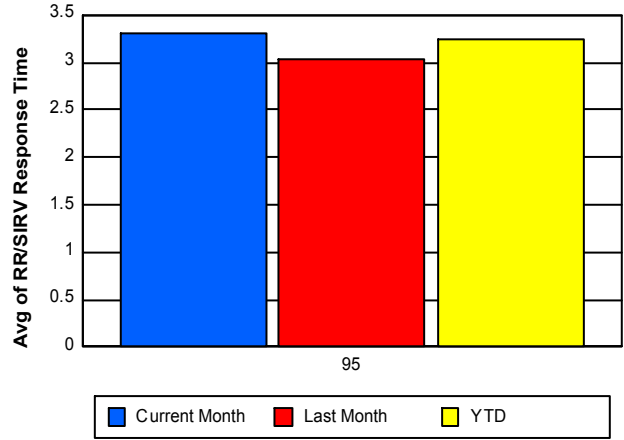
TMC Response Time



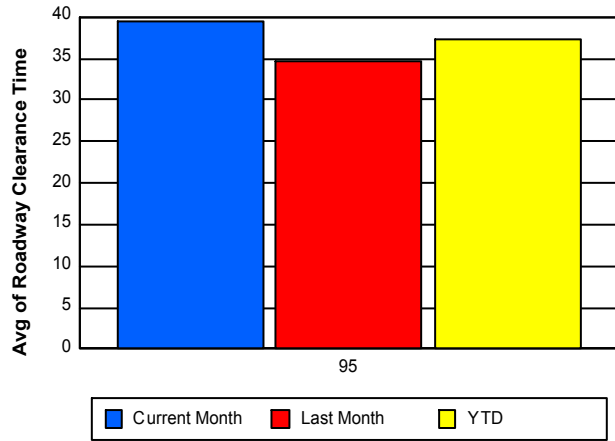
Road Ranger / SIRV Dispatch Time



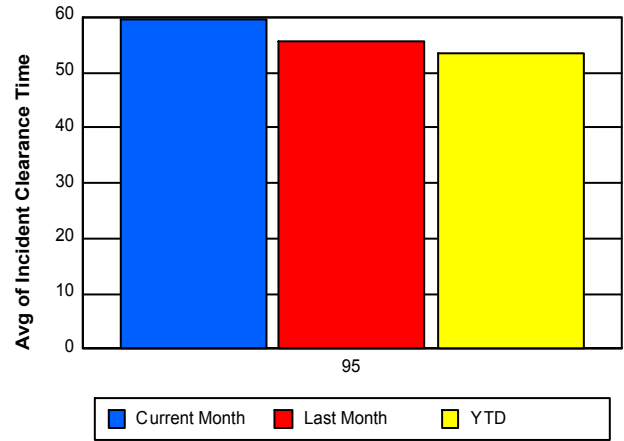
Road Ranger / SIRV Response Time



Roadway Clearance Time (2A)



Incident Clearance Time (3B)



Performance Measures by Event Type

Abandoned Vehicle

	<u>Current Month</u>	<u>Last Month</u>	<u>YTD</u>
Number of Events	497	561	4,831
Number of Incidents	1	1	19
TMC Detection (min.)	0.02	0.02	0.02
TMC Verification (min.)	1.04	1.06	0.47
TMC Response (min.)	1.45	21.26	5.91
RR Dispatch Time (min.)	0.54	20.17	4.99
RR Response Time (min.)	0.91	1.09	0.92
Event Clearance (min.)	182.53	138.89	200.66
Roadway Clearance (min.)	6.62	9.62	17.86
Incident Clearance (min.)	7.87	16.40	120.07
# of Events w/ RR/SIRV	435	479	3,971
RR/SIRV Assists	442	497	4,127
RR/SIRV Activities	450	516	4,263

Accident

	<u>Current Month</u>	<u>Last Month</u>	<u>YTD</u>
Number of Events	305	253	2,209
Number of Incidents	141	122	937
TMC Detection (min.)	0.23	0.21	0.34
TMC Verification (min.)	6.27	4.58	6.04
TMC Response (min.)	7.90	6.88	7.93
RR Dispatch Time (min.)	1.64	1.27	1.26
RR Response Time (min.)	6.25	5.64	6.68
Event Clearance (min.)	57.46	56.41	52.28
Roadway Clearance (min.)	43.84	44.58	46.42
Incident Clearance (min.)	69.37	72.91	68.84
# of Events w/ RR/SIRV	300	247	2,166
RR/SIRV Assists	348	307	2,583
RR/SIRV Activities	371	330	2,873

Congestion

	<u>Current Month</u>	<u>Last Month</u>	<u>YTD</u>
Number of Events	11	11	60
Number of Incidents	0	0	3
TMC Detection (min.)	0.01	0.09	0.03
TMC Verification (min.)	5.09	0.34	3.23
TMC Response (min.)	28.93	14.96	16.71
RR Dispatch Time (min.)	7.87	1.16	6.50
RR Response Time (min.)	21.06	13.50	13.54
Event Clearance (min.)	34.05	31.33	39.14
Roadway Clearance (min.)			52.32
Incident Clearance (min.)			79.64
# of Events w/ RR/SIRV	6	3	28
RR/SIRV Assists	6	3	32
RR/SIRV Activities	6	3	33

Debris on Roadway

	<u>Current Month</u>	<u>Last Month</u>	<u>YTD</u>
Number of Events	165	212	1,744
Number of Incidents	17	24	217
TMC Detection (min.)	0.20	0.17	0.20
TMC Verification (min.)	7.81	7.24	7.18
TMC Response (min.)	7.93	7.13	7.33
RR Dispatch Time (min.)	1.85	1.42	1.25
RR Response Time (min.)	6.06	5.71	6.09
Event Clearance (min.)	15.46	11.91	11.68
Roadway Clearance (min.)	25.10	11.21	12.58
Incident Clearance (min.)	34.12	14.61	14.67
# of Events w/ RR/SIRV	164	212	1,737
RR/SIRV Assists	173	221	1,802
RR/SIRV Activities	175	223	1,837

Disabled Vehicle

	<u>Current Month</u>	<u>Last Month</u>	<u>YTD</u>
Number of Events	1,837	2,114	16,326
Number of Incidents	44	47	436
TMC Detection (min.)	0.06	0.05	0.08
TMC Verification (min.)	3.41	3.08	3.36
TMC Response (min.)	3.87	3.87	3.63
RR Dispatch Time (min.)	0.85	1.12	0.68
RR Response Time (min.)	3.02	2.75	2.96
Event Clearance (min.)	17.85	17.73	16.77
Roadway Clearance (min.)	26.78	19.52	24.41
Incident Clearance (min.)	34.48	32.37	34.63
# of Events w/ RR/SIRV	1,805	2,072	16,169
RR/SIRV Assists	1,878	2,139	16,689
RR/SIRV Activities	2,032	2,308	18,003

Emergency Vehicles

	<u>Current Month</u>	<u>Last Month</u>	<u>YTD</u>
Number of Events	2	3	10
Number of Incidents	2	1	6
TMC Detection (min.)	0.18	0.33	0.22
TMC Verification (min.)	2.07	1.22	3.15
TMC Response (min.)	4.05	1.19	3.90
RR Dispatch Time (min.)	2.26	1.02	0.99
RR Response Time (min.)	3.88	0.17	3.34
Event Clearance (min.)	48.33	20.86	24.29
Roadway Clearance (min.)	19.67	7.07	15.56
Incident Clearance (min.)	48.33	10.60	26.48
# of Events w/ RR/SIRV	1	3	8
RR/SIRV Assists	1	3	8
RR/SIRV Activities	1	4	9

Off Ramp Backup

	<u>YTD</u>
Number of Events	2
Number of Incidents	0
TMC Detection (min.)	0.00
TMC Verification (min.)	0.00
TMC Response (min.)	5.67
RR Dispatch Time (min.)	0.40
RR Response Time (min.)	5.27
Event Clearance (min.)	19.78
Roadway Clearance (min.)	
Incident Clearance (min.)	
# of Events w/ RR/SIRV	1
RR/SIRV Assists	2
RR/SIRV Activities	2

Other

	<u>Current Month</u>	<u>Last Month</u>	<u>YTD</u>
Number of Events	32	41	265
Number of Incidents	0	1	7
TMC Detection (min.)	0.16	0.58	0.15
TMC Verification (min.)	5.63	4.36	5.32
TMC Response (min.)	7.06	6.40	8.30
RR Dispatch Time (min.)	0.59	0.86	0.96
RR Response Time (min.)	6.46	5.83	7.43
Event Clearance (min.)	15.24	18.70	17.34
Roadway Clearance (min.)		10.92	57.86
Incident Clearance (min.)		19.60	63.85
# of Events w/ RR/SIRV	27	31	226
RR/SIRV Assists	28	32	235
RR/SIRV Activities	28	37	245

Pedestrian

	<u>Current Month</u>	<u>Last Month</u>	<u>YTD</u>
Number of Events	19	18	132
Number of Incidents	0	0	1
TMC Detection (min.)	0.10	0.20	0.12
TMC Verification (min.)	4.30	5.54	2.64
TMC Response (min.)	4.83	6.11	3.34
RR Dispatch Time (min.)	1.13	1.52	0.51
RR Response Time (min.)	3.70	4.59	2.82
Event Clearance (min.)	12.58	14.62	14.29
Roadway Clearance (min.)			18.32
Incident Clearance (min.)			19.55
# of Events w/ RR/SIRV	19	17	128
RR/SIRV Assists	20	18	131
RR/SIRV Activities	20	18	133

Police Activity

	<u>Current Month</u>	<u>Last Month</u>	<u>YTD</u>
Number of Events	6	4	44
Number of Incidents	5	2	31
TMC Detection (min.)	0.15	0.35	0.18
TMC Verification (min.)	3.61	10.80	3.18
TMC Response (min.)	10.57	10.78	9.64
RR Dispatch Time (min.)	0.97	3.15	2.61
RR Response Time (min.)	9.59	7.63	7.10
Event Clearance (min.)	89.77	54.46	62.98
Roadway Clearance (min.)	79.70	78.57	68.89
Incident Clearance (min.)	105.11	82.05	81.26
# of Events w/ RR/SIRV	4	4	38
RR/SIRV Assists	6	4	53
RR/SIRV Activities	6	5	56

Road Work - Emergency

	<u>Last Month</u>	<u>YTD</u>
Number of Events	3	22
Number of Incidents	3	20
TMC Detection (min.)	0.12	0.15
TMC Verification (min.)	2.39	4.07
TMC Response (min.)	16.74	9.43
RR Dispatch Time (min.)	0.81	2.47
RR Response Time (min.)	15.93	6.96
Event Clearance (min.)	70.29	60.47
Roadway Clearance (min.)	50.92	106.23
Incident Clearance (min.)	70.29	57.95
# of Events w/ RR/SIRV	3	20
RR/SIRV Assists	6	36
RR/SIRV Activities	6	36

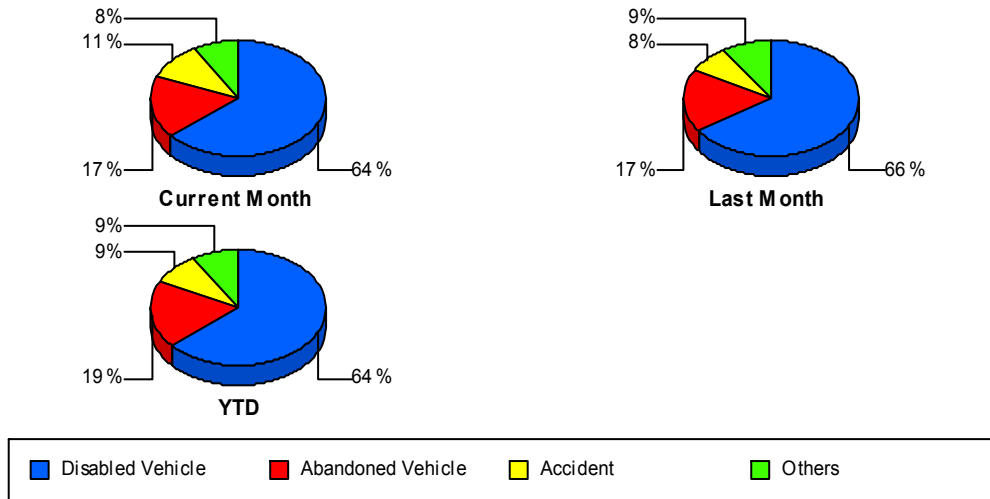
Visibility

	<u>YTD</u>
Number of Events	2
Number of Incidents	0
TMC Detection (min.)	0.00
TMC Verification (min.)	0.00
TMC Response (min.)	0.00
RR Dispatch Time (min.)	0.00
RR Response Time (min.)	0.00
Event Clearance (min.)	22.63
Roadway Clearance (min.)	
Incident Clearance (min.)	
# of Events w/ RR/SIRV	1
RR/SIRV Assists	1
RR/SIRV Activities	1

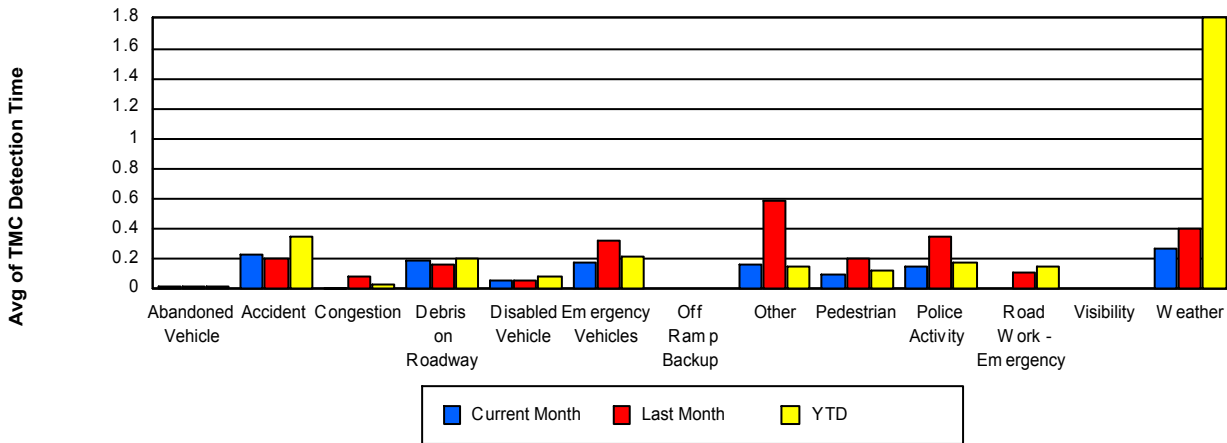
Weather

	<u>Current Month</u>	<u>Last Month</u>	<u>YTD</u>
Number of Events	3	2	10
Number of Incidents	1	0	6
TMC Detection (min.)	0.27	0.41	1.80
TMC Verification (min.)	8.49	50.57	15.32
TMC Response (min.)	8.46	50.52	22.92
RR Dispatch Time (min.)	0.15	0.16	2.53
RR Response Time (min.)	8.31	50.37	20.39
Event Clearance (min.)	29.93	94.51	78.33
Roadway Clearance (min.)	104.23		120.43
Incident Clearance (min.)	65.73		95.04
# of Events w/ RR/SIRV	3	2	9
RR/SIRV Assists	3	2	9
RR/SIRV Activities	3	2	9

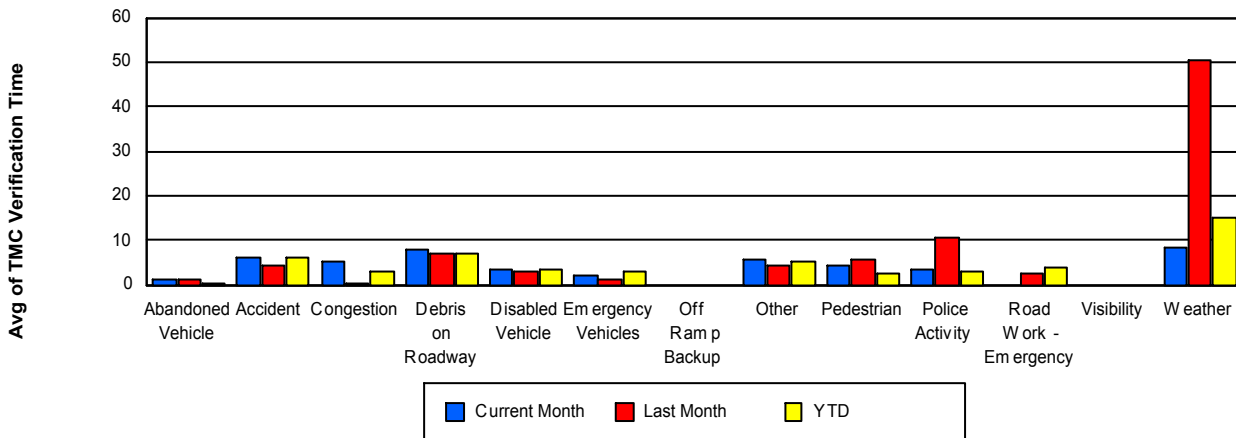
Number of Events / Event Type



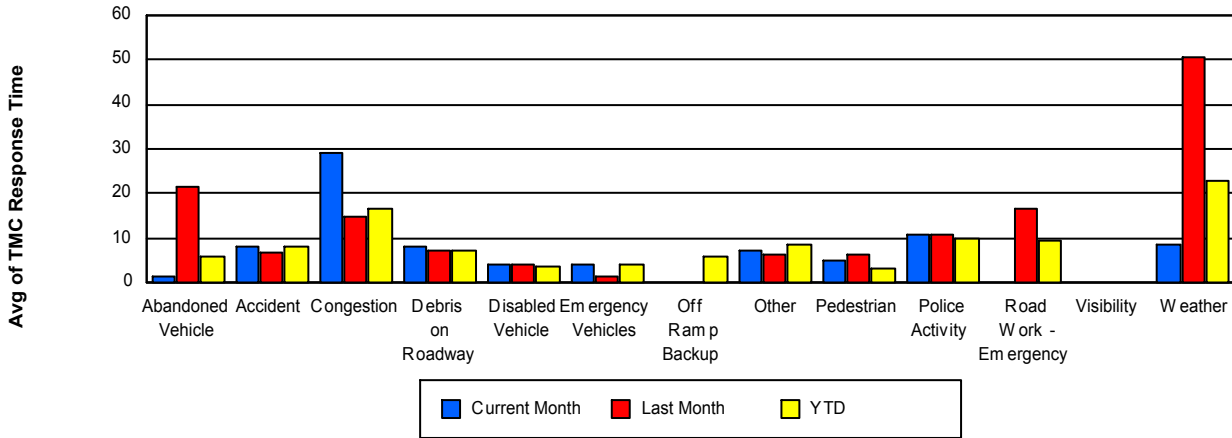
TMC Detection Time



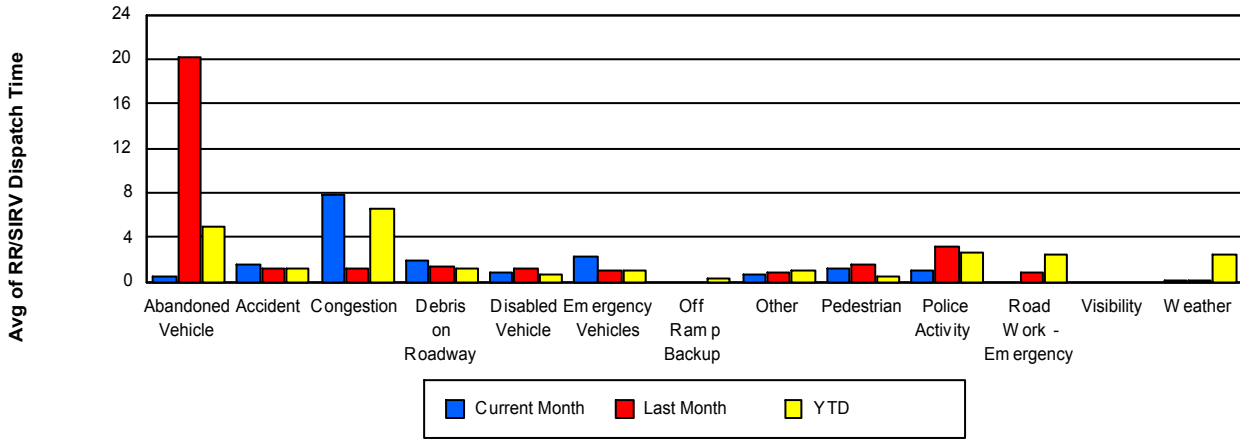
TMC Verification Time



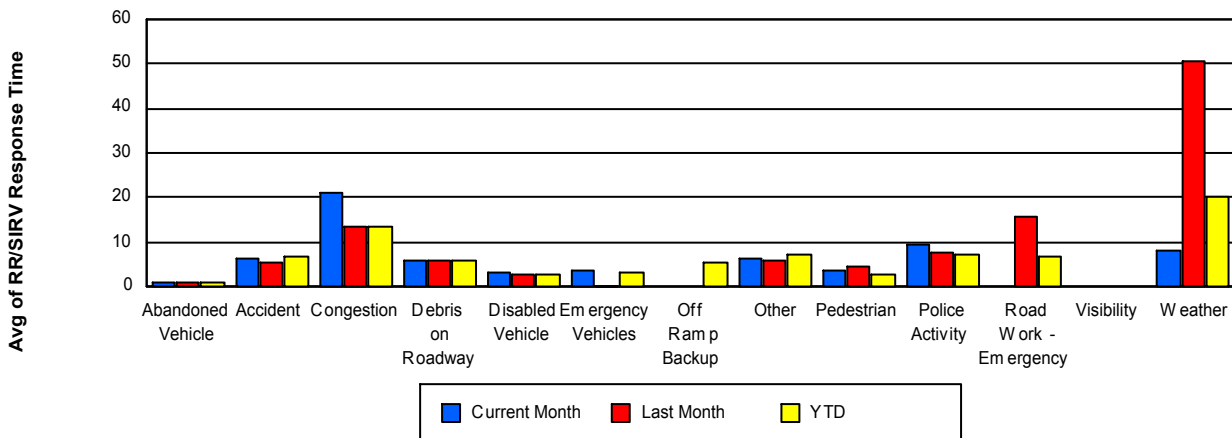
TMC Response Time



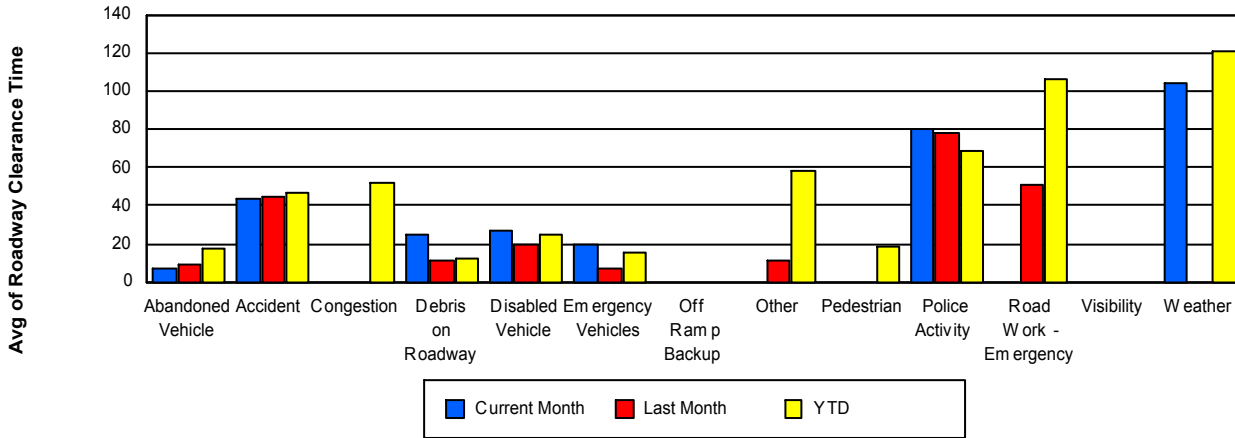
Road Ranger / SIRV Dispatch Time



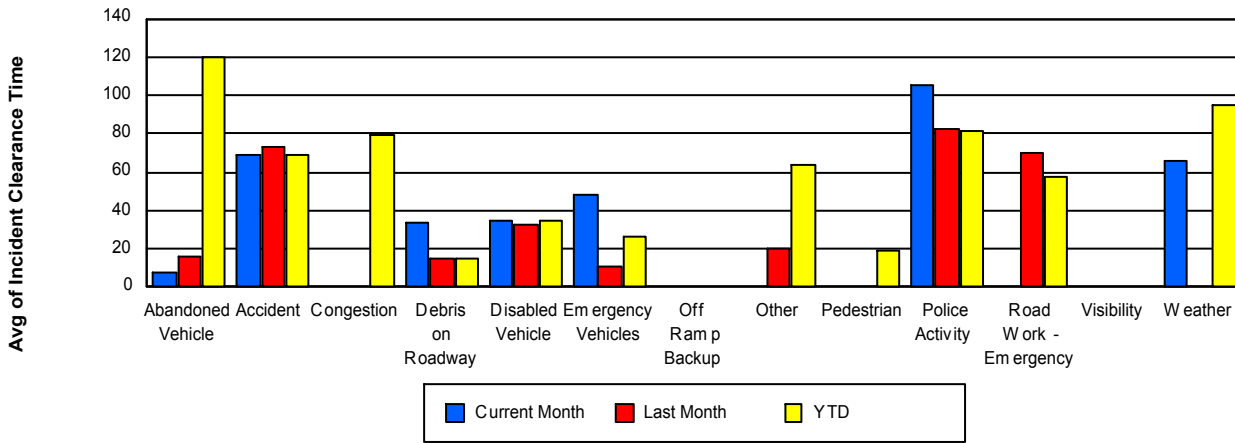
Road Ranger / SIRV Response Time



Roadway Clearance Time (2A)



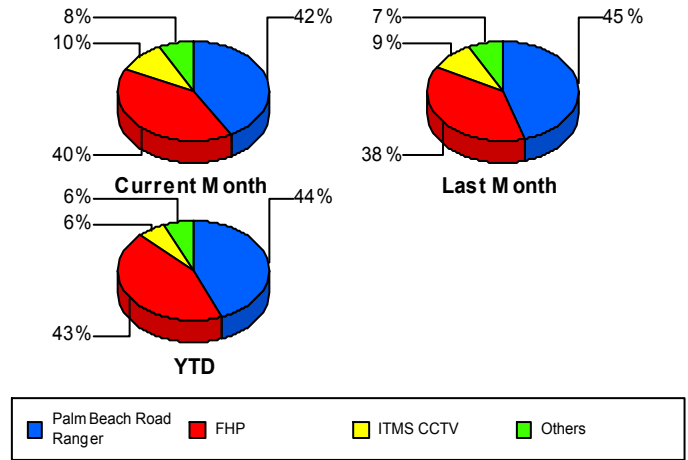
Incident Clearance Time (3B)



Incident Detection Methods

	Current Month	Last Month	YTD
Broward CCTV	0	0	1
Broward Road Ranger	0	2	7
Broward TMC	0	0	3
Construction CEI	2	0	5
District 4	9	1	10
FDOT Maintenance	1	0	1
FHP	85	76	728
I-95 Construction PIO	0	0	5
ITMS	0	3	15
ITMS CCTV	22	19	104
Media	0	0	15
MIST Map RTMS Alert	0	1	1
Motorist	4	7	20
Other	0	0	8
Palm Beach County Sc	0	0	1
Palm Beach Road Rang	88	91	744
Road Watcher	0	0	1
SIRV	0	0	1
SmarTraveler (511)	0	1	13
Total	211	201	1,683

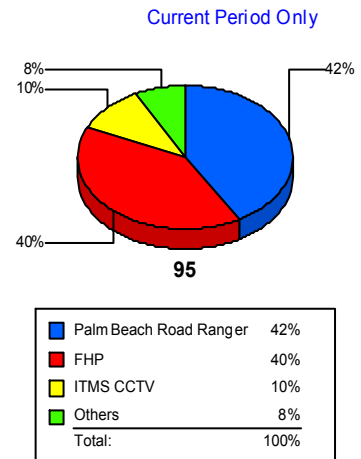
Total Incidents by Detection Method



Incident Detection Methods by Roadway

		Current Month	Last Month	YTD
95	Broward CCTV	0	0	1
	Broward Road Ranger	0	2	7
	Broward TMC	0	0	3
	Construction CEI	2	0	5
	District 4	9	1	10
	FDOT Maintenance	1	0	1
	FHP	85	76	728
	I-95 Construction PIO	0	0	5
	ITMS	0	3	15
	ITMS CCTV	22	19	104
	Media	0	0	15
	MIST Map RTMS Alert	0	1	1
	Motorist	4	7	20
	Other	0	0	8
	Palm Beach County Sc	0	0	1
	Palm Beach Road Rang	88	91	744
	Road Watcher	0	0	1
	SIRV	0	0	1
	SmarTraveler (511)	0	1	13
Total	211	201	1,683	
Total	211	201	1,683	

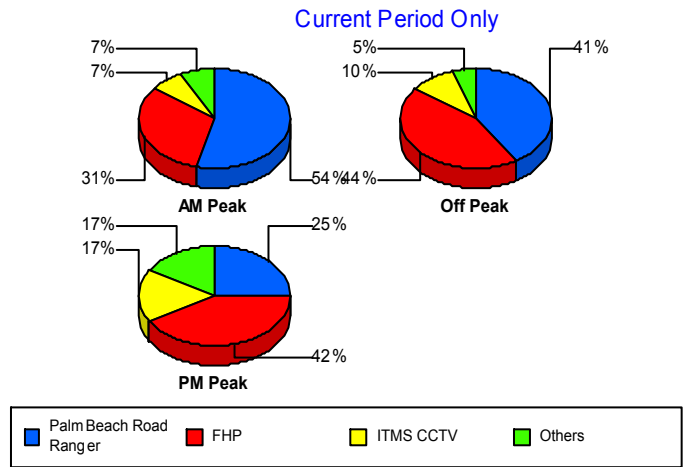
Total Events by Roadway and Detection Method



Incident Detection Methods by Peak Period

		Current Month	Last Month	YTD
AM Peak	Broward Road Ranger	0	1	1
	Construction CEI	1	0	2
	District 4	1	1	2
	FHP	17	16	153
	I-95 Construction PIO	0	0	2
	ITMS	0	1	3
	ITMS CCTV	4	4	27
	Media	0	0	2
	Motorist	2	2	4
	Palm Beach Road Rang	29	29	226
	SmarTraveler (511)	0	1	4
	Total	54	55	426
Off Peak	Broward Road Ranger	0	0	4
	Broward TMC	0	0	1
	Construction CEI	1	0	2
	District 4	3	0	3
	FDOT Maintenance	1	0	1
	FHP	53	43	425
	I-95 Construction PIO	0	0	3
	ITMS	0	0	8
	ITMS CCTV	12	7	45
	Media	0	0	3
	MIST Map RTMS Alert	0	1	1
	Motorist	1	4	10
	Other	0	0	5
	Palm Beach County Sc	0	0	1
	Palm Beach Road Rang	50	40	337
	SIRV	0	0	1
	SmarTraveler (511)	0	0	4
Total	121	95	854	
PM Peak	Broward CCTV	0	0	1

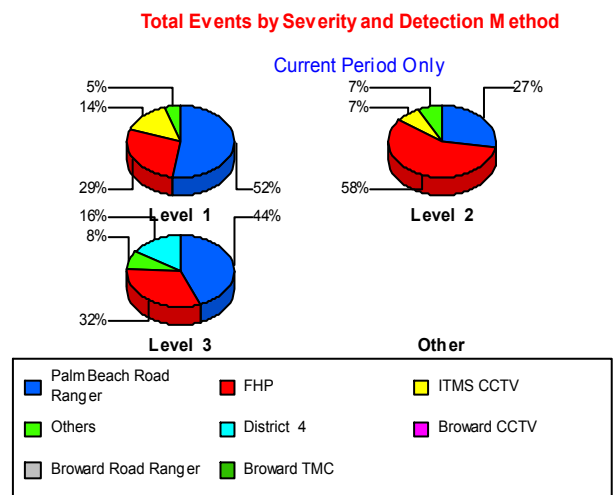
Total Events by Peak Period and Detection Method



		Current Month	Last Month	YTD
PM Peak	Broward Road Ranger	0	1	2
	Broward TMC	0	0	2
	Construction CEI	0	0	1
	District 4	5	0	5
	FHP	15	17	150
	ITMS	0	2	4
	ITMS CCTV	6	8	32
	Media	0	0	10
	Motorist	1	1	6
	Other	0	0	3
	Palm Beach Road Rang	9	22	181
	Road Watcher	0	0	1
	SmarTraveler (511)	0	0	5
	Total	36	51	403
Total	211	201	1,683	

Incident Detection Methods by Severity

		Current Month	Last Month	YTD
Level 1	Broward CCTV	0	0	1
	Broward Road Ranger	0	0	4
	Broward TMC	0	0	2
	District 4	2	1	3
	FDOT Maintenance	1	0	1
	FHP	30	33	311
	I-95 Construction PIO	0	0	1
	ITMS	0	2	8
	ITMS CCTV	15	13	65
	Media	0	0	7
	Motorist	2	2	9
	Other	0	0	6
	Palm Beach Road Rang	55	63	519
	SmarTraveler (511)	0	1	8



		Current Month	Last Month	YTD
Level 1	Total	105	115	945
Level 2	Broward Road Ranger	0	1	2
	Construction CEI	2	0	4
	District 4	3	0	3
	FHP	47	30	302
	I-95 Construction PIO	0	0	3
	ITMS	0	1	6
	ITMS CCTV	6	4	26
	Media	0	0	6
	MIST Map RTMS Alert	0	1	1
	Motorist	1	5	10
	Other	0	0	2
	Palm Beach County Sc	0	0	1
	Palm Beach Road Rang	22	21	160
	SIRV	0	0	1
	SmarTraveler (511)	0	0	5
Total	81	63	532	
Level 3	Broward Road Ranger	0	1	1
	Broward TMC	0	0	1
	Construction CEI	0	0	1
	District 4	4	0	4
	FHP	8	13	115
	I-95 Construction PIO	0	0	1
	ITMS	0	0	1
	ITMS CCTV	1	2	13
	Media	0	0	2
	Motorist	1	0	1
	Palm Beach Road Rang	11	7	65
	Road Watcher	0	0	1
	Total	25	23	206
Total		211	201	1,683

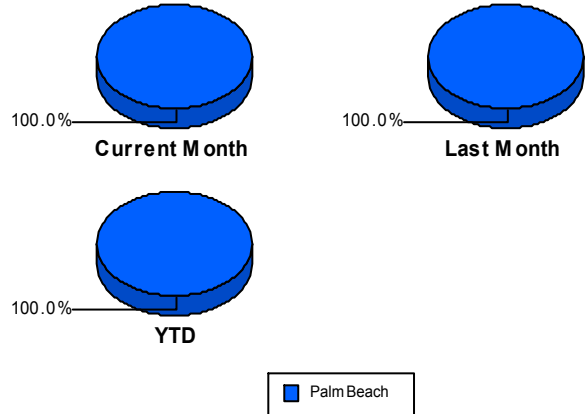
Road Ranger / SIRV Performance Measures

Road Ranger / SIRV Performance By County

RR/SIRV Responses per County

Values presented are:
 - Total Events with a RR/SIRV Response
 - Total RR/SIRV Responses,
 - Total Activities Performed

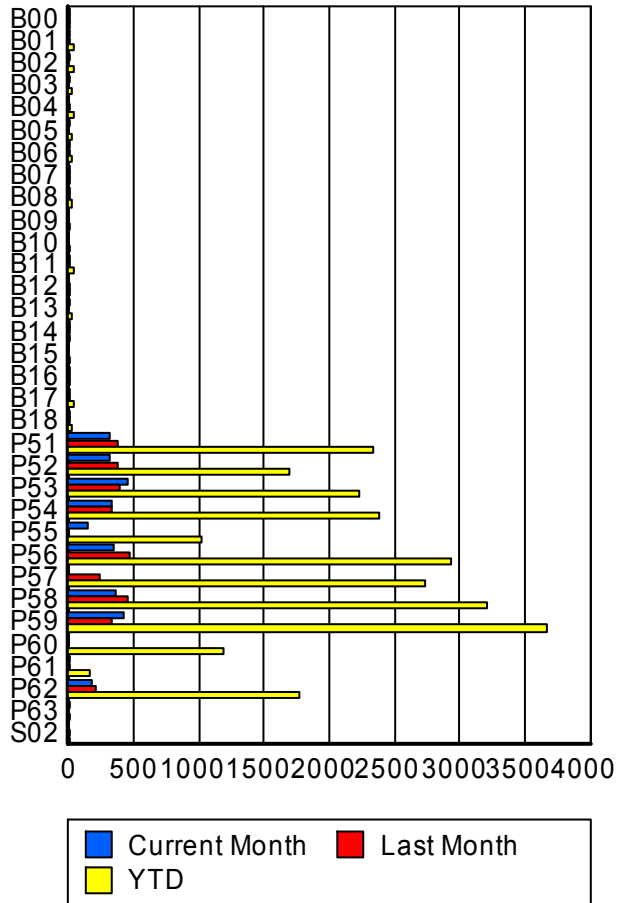
	Current Mo	Last Month	YTD
Palm Beach	2,764	3,073	24,502
	2,905	3,232	25,708
	3,092	3,452	27,500



Road Ranger / SIRV Performance By Truck

	Current Mo	Last Month	YTD
B00	3	2	7
	3	2	7
	3	2	8
B01	13	5	38
	13	5	38
	13	5	40
B02	4	0	39
	4	0	39
	4	0	40
B03	1	0	18
	1	0	18
	1	0	18
B04	0	1	34
	0	1	34
	0	1	34
B05	1	0	28
	1	0	28
	1	0	28
B06	2	7	20
	2	7	20
	2	7	20
B07	1	3	12
	1	3	12
	1	3	13
B08	3	12	15
	3	13	16
	3	14	17

**RR/SIRV
Responses per
Truck**



	Current Mo	Last Month	YTD
B09	0 0 0	0 0 0	1 1 1
B10	0 0 0	0 0 0	7 7 7
B11	1 1 1	8 8 9	33 33 36
B12	0 0 0	3 3 3	11 12 12
B13	4 4 4	0 0 0	22 22 23
B14	1 1 1	1 1 2	13 13 14
B15	0 0 0	0 0 0	10 10 10
B16	2 2 2	5 5 6	14 14 15
B17	4 4 4	2 2 2	39 39 41
B18	3 3 3	1 1 1	27 27 27
P51	321 321 342	372 376 401	2,316 2,339 2,498
P52	308 311 332	364 371 394	1,668 1,687 1,810
P53	443 449 484	389 397 427	2,210 2,236 2,395
P54	329 335 360	329 332 350	2,358 2,387 2,546
P55	147 148 156	0 0 0	1,001 1,018 1,106

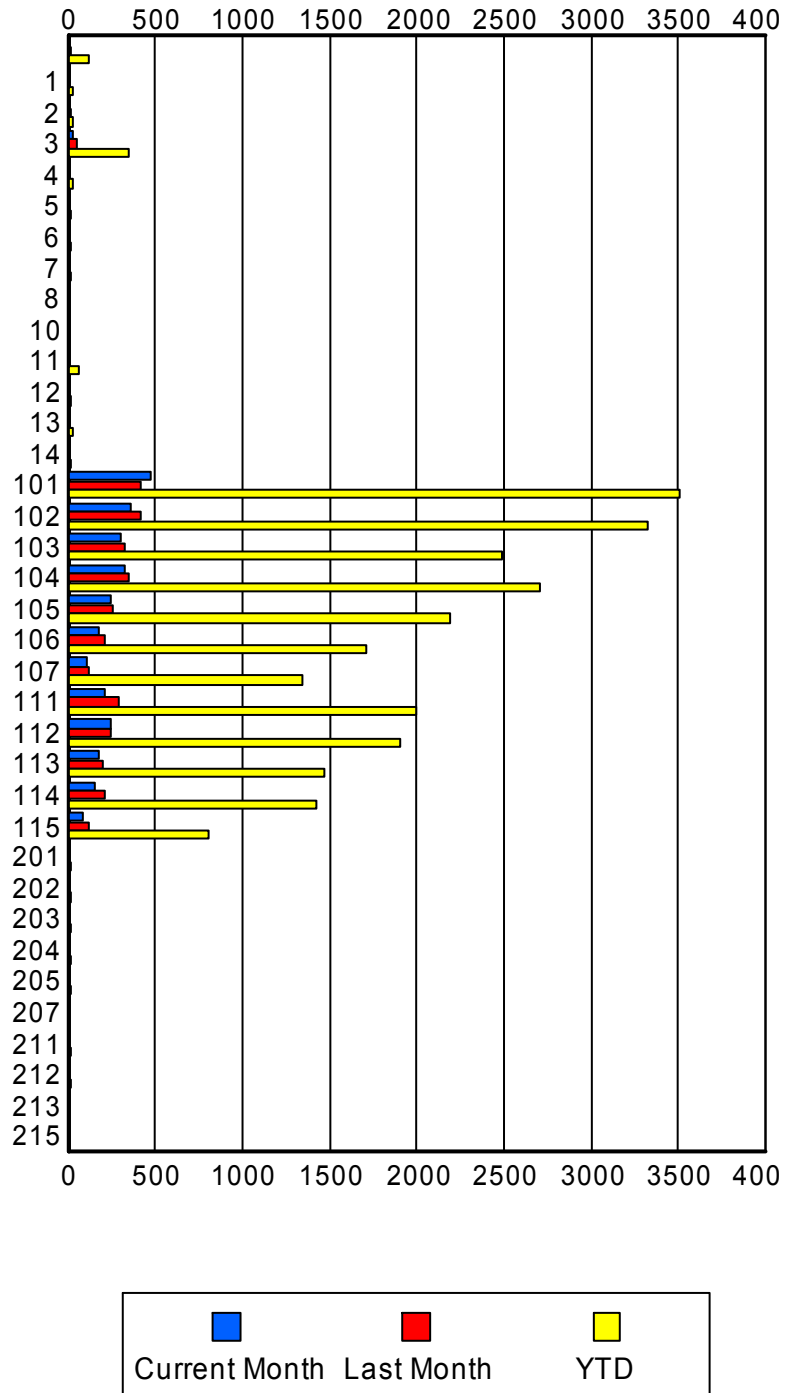
	Current Mo	Last Month	YTD
P56	344	456	2,907
	346	461	2,933
	365	493	3,123
P57	0	231	2,711
	0	232	2,738
	0	250	2,940
P58	353	450	3,164
	358	456	3,207
	382	491	3,429
P59	409	329	3,622
	414	334	3,663
	436	356	3,918
P60	0	0	1,162
	0	0	1,180
	0	0	1,270
P61	2	14	153
	2	14	154
	2	15	166
P62	176	206	1,756
	177	207	1,773
	189	219	1,892
P63	1	0	2
	1	0	2
	1	0	2
S02	0	1	1
	0	1	1
	0	1	1

Road Ranger / SIRV Performance By Beat

	Current Mo	Last Month	YTD
	8	13	114
	8	14	117
	8	16	126
1	0	0	25
	0	0	26
	0	0	26
2	0	11	24
	0	11	24
	0	11	26
3	31	52	347
	32	53	351
	32	57	364
4	0	0	22
	0	0	23
	0	0	23
5	0	0	15
	0	0	15
	0	0	19
6	0	0	13
	0	0	13
	0	0	15
7	0	0	12
	0	0	12
	0	0	12
8	0	1	2
	0	1	2
	0	1	2
10	1	0	3
	1	0	3
	1	0	3
11	7	6	66
	7	6	66
	7	6	67
12	0	0	12
	0	0	12
	0	0	15
13	0	0	24
	0	0	27
	0	0	28
14	0	0	16
	0	0	16
	0	0	18
101	472	408	3,478
	474	413	3,511
	494	431	3,707

Values presented are:
 - Total Events with a RR/SIRV Response
 - Total RR/SIRV Responses,
 - Total Activities Performed

RR/SIRV Responses per Beat



	Current Mo	Last Month	YTD
102	355 358 369	414 420 447	3,283 3,323 3,492
103	298 299 320	321 327 357	2,451 2,493 2,696
104	325 330 354	348 351 367	2,664 2,707 2,897
105	236 241 255	252 255 271	2,163 2,190 2,311
106	178 181 198	207 211 221	1,692 1,712 1,819
107	106 107 113	113 113 118	1,338 1,348 1,407
111	211 215 231	285 288 309	1,978 1,998 2,159
112	240 242 258	242 248 270	1,881 1,904 2,062
113	167 170 192	191 193 211	1,452 1,472 1,637
114	148 151 164	202 206 229	1,399 1,421 1,559
115	83 84 91	119 120 128	795 803 883
201	0 0 0	0 0 0	18 18 18
202	0 0 0	0 0 0	20 20 20
203	0 0 0	0 0 0	15 15 17
204	0 0 0	0 0 0	10 10 13

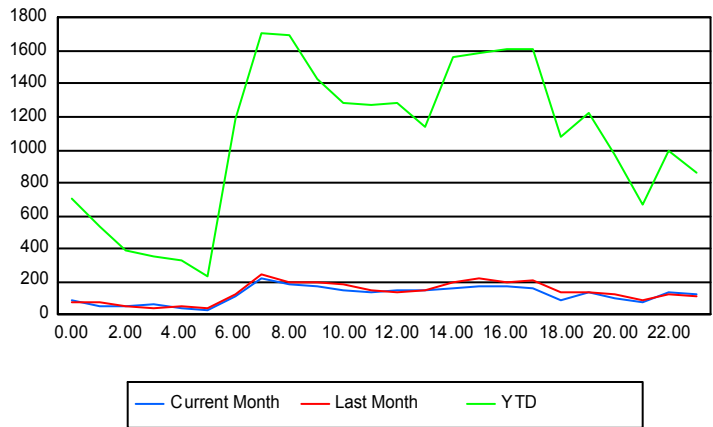
	Current Mo	Last Month	YTD
205	0	0	16
	0	0	16
	0	0	18
207	5	0	5
	5	0	5
	5	0	5
211	0	0	10
	0	0	10
	0	0	10
212	0	0	17
	0	0	17
	0	0	17
213	0	2	7
	0	2	7
	0	2	8
215	0	0	1
	0	0	1
	0	0	1

Road Ranger / SIRV Performance By Time of Day

Values presented are:
- Total Events with a RR/SIRV Response
- Total RR/SIRV Responses,
- Total Activities Performed

	Current Mo	Last Month	YTD
12AM-1AM	81	74	657
	88	79	700
	98	87	767
1AM-2AM	46	68	495
	52	74	533
	59	81	590
2AM-3AM	49	45	379
	52	46	394
	55	52	424
3AM-4AM	57	40	330
	65	40	355
	66	50	390
4AM-5AM	35	41	291
	40	47	324
	42	58	362
5AM-6AM	23	30	191
	29	41	227
	31	46	255
6AM-7AM	105	110	1,115
	112	119	1,185
	121	127	1,261

Number of Responses / Hour of the Day



	Current Mo	Last Month	YTD
7AM-8AM	211	231	1,645
	216	239	1,707
	235	255	1,817
8AM-9AM	183	194	1,618
	190	199	1,699
	199	216	1,802
9AM-10AM	158	193	1,365
	169	198	1,425
	185	213	1,519
10AM-11AM	143	163	1,231
	147	180	1,288
	158	198	1,387
11AM-12PM	125	144	1,215
	131	147	1,269
	142	158	1,339
12PM-1PM	138	128	1,224
	147	131	1,280
	155	137	1,364
1PM-2PM	131	148	1,085
	145	154	1,143
	150	164	1,213
2PM-3PM	157	189	1,492
	160	192	1,567
	167	197	1,664
3PM-4PM	159	208	1,529
	167	216	1,591
	169	225	1,672
4PM-5PM	175	190	1,548
	176	198	1,606
	186	207	1,707
5PM-6PM	159	195	1,558
	163	205	1,613
	168	214	1,694
6PM-7PM	91	126	1,034
	92	139	1,085
	93	141	1,159
7PM-8PM	139	132	1,183
	142	139	1,227
	148	144	1,317
8PM-9PM	94	118	934
	96	120	971
	99	123	1,037
9PM-10PM	65	85	624
	71	91	663
	75	98	709

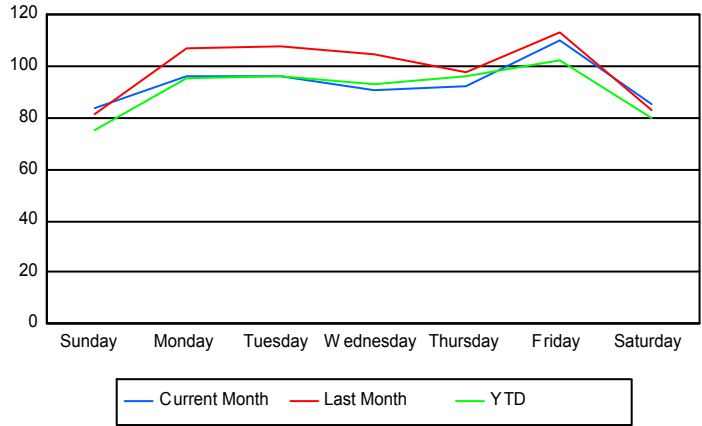
	Current Mo	Last Month	YTD
10PM-11PM	126	114	933
	136	125	993
	145	135	1,101
11PM-12AM	114	107	826
	119	113	863
	146	126	950

Road Ranger / SIRV Performance By Day of Week

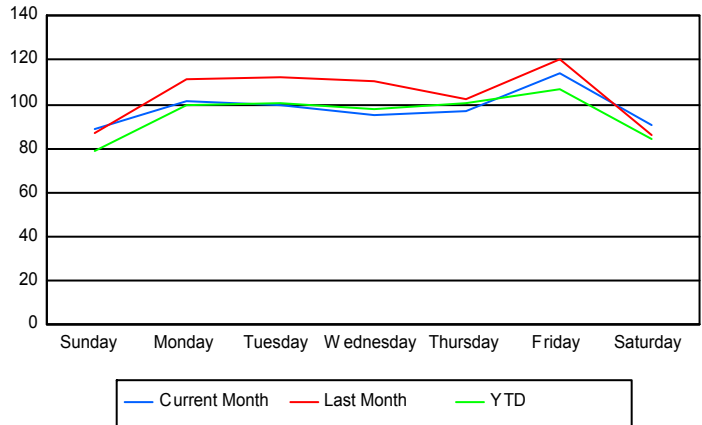
Values presented are:
 - Total Events with a RR/SIRV Response
 - Total RR/SIRV Responses,
 - Total Activities Performed

	Current Mo	Last Month	YTD
Sunday	408	326	2,865
	430	346	3,012
	464	368	3,248
Monday	384	428	3,687
	406	445	3,848
	429	475	4,118
Tuesday	382	431	3,720
	395	450	3,868
	426	483	4,125
Wednesday	361	522	3,594
	379	548	3,745
	395	575	3,953
Thursday	370	481	3,699
	388	504	3,875
	416	530	4,140
Friday	439	563	3,943
	455	598	4,126
	489	651	4,415
Saturday	425	330	3,068
	452	341	3,234
	473	370	3,501

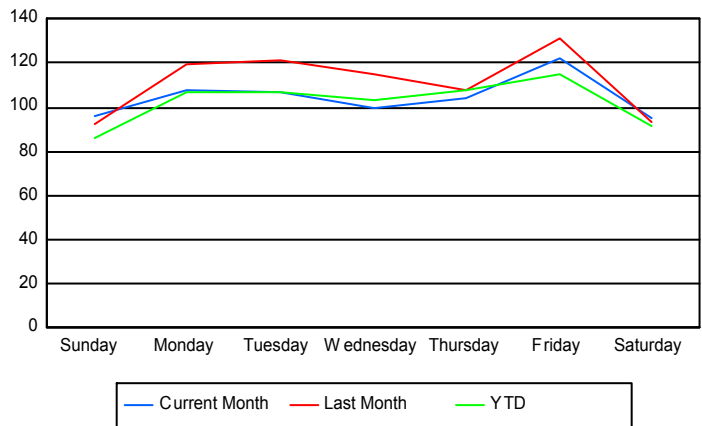
Avg # of events with a RR/SIRV Response per Day of the Week



Avg # of RR/SIRV Responses per Day of the Week



Avg # of RR/SIRV Activities Performed per Day of the Week



Road Ranger/ SIRV Responses per Time of Day and Day of Week

