



# Monthly Performance Measures Report Palm Beach County



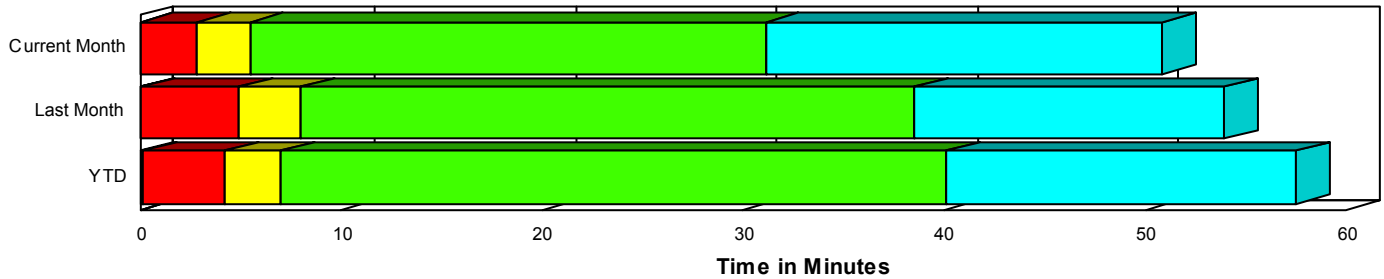
Created on:  
October 03, 2008  
1:38 pm

Period From Sep 1, 2008 to Sep 30, 2008

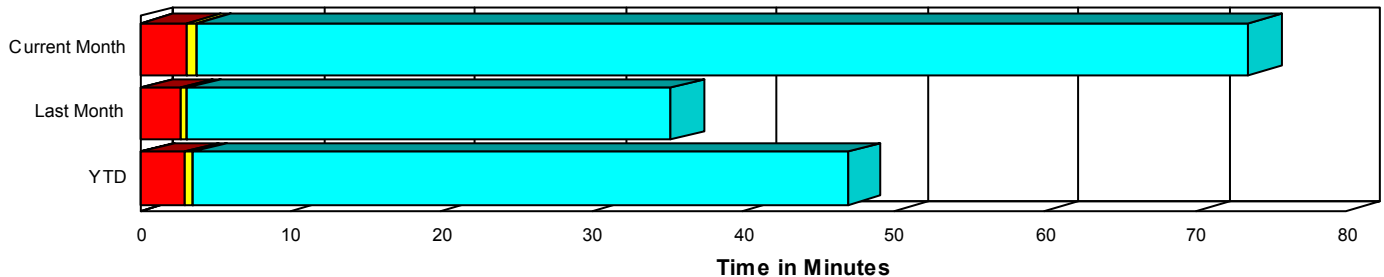
## Performance Measures Summary

	Traffic Events (No Lanes Blocked)			Incidents (Lanes Blocked)		
	<u>This Month</u>	<u>Last Month</u>	<u>YTD</u>	<u>This Month</u>	<u>Last Month</u>	<u>YTD</u>
Number of Events	1,617	2,575	22,036	94	118	1,322
TMC Detection (min.)	0.00	0.00	0.08	0.00	0.07	0.13
TMC Verification (min.)	3.16	2.65	2.86	2.84	4.83	4.08
TMC Response (min.)	4.32	3.09	3.59	5.58	8.04	7.07
RR Dispatch Time (min.)	1.49	0.86	1.22	1.44	2.59	2.35
RR Response Time (min.)	3.19	2.27	2.42	4.14	5.45	4.82
Roadway Clearance (min.)				37.34	38.90	40.20
Event Clearance (min.)	74.08	35.21	47.04	55.96	54.29	56.55
# of Events w/ RR/SIRV	1,374	2,500	21,031	71	116	1,216
RR/SIRV Responses	1,374	2,500	21,138	71	116	1,293
RR/SIRV Activities	1,429	2,673	22,711	98	166	1,744

### Incident Clearance TimeLine



### Traffic Event (Non-Lane Blockage) Time-Line



<span style="color: blue;">■</span> Avg. TMC Detection Time	<span style="color: green;">■</span> Avg. Time from TMC Response to Roadway Clearance*
<span style="color: red;">■</span> Avg. Time from TMC Detection to TMC Verification	<span style="color: cyan;">■</span> Avg. Time from Roadway Clearance to Incident/Event Clearance**
<span style="color: yellow;">■</span> Avg. Time from TMC Verification to TMC Response	

\* Roadway clearance equals all travel lanes open

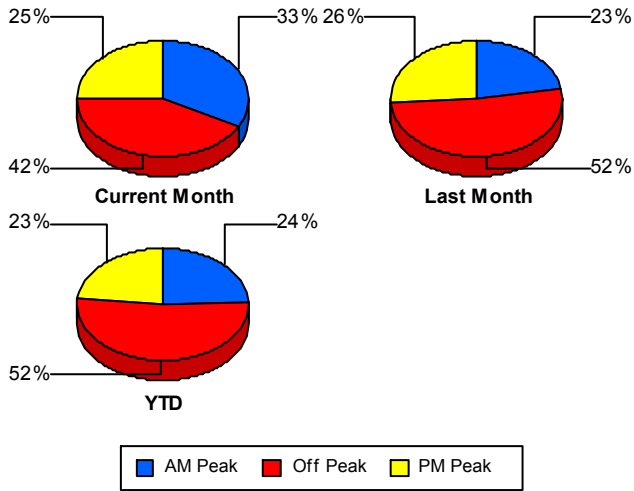
\*\* Incident clearance equals time when last responder has left the scene

## Performance Measures by Peak Period

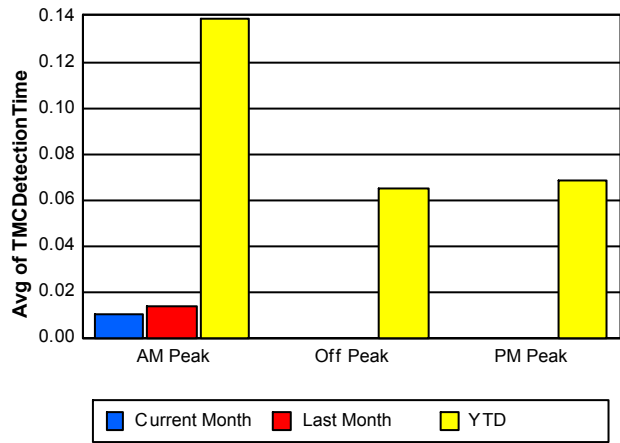
Note: AM peak period is defined as 6am to 10am and PM peak period is defined as 3pm to 7pm.

	AM Peak			Off Peak			PM Peak		
	<u>Current Month</u>	<u>Last Month</u>	<u>YTD</u>	<u>Current Month</u>	<u>Last Month</u>	<u>YTD</u>	<u>Current Month</u>	<u>Last Month</u>	<u>YTD</u>
Number of Events	563	608	5,684	721	1,393	12,261	427	692	5,413
Number of Incidents	30	25	335	46	62	707	18	31	280
TMC Detection (min.)	0.01	0.01	0.14	0.00	0.00	0.06	0.00	0.00	0.07
TMC Verification (min.)	2.76	2.12	2.44	3.43	3.47	3.26	3.16	1.81	2.71
TMC Response (min.)	4.01	3.18	3.23	4.70	3.95	4.27	4.42	2.17	3.26
RR Dispatch Time (min.)	1.11	0.94	1.14	2.16	1.07	1.50	0.97	0.67	0.96
RR Response Time (min.)	2.94	2.27	2.14	3.33	2.92	2.84	3.49	1.52	2.35
Event Clearance (min.)	120.51	42.51	55.71	50.90	40.35	49.62	47.96	21.69	34.40
Roadway Clearance (min.)	45.29	32.59	37.12	34.39	42.96	43.96	31.64	35.86	34.38
Incident Clearance (min.)	69.27	48.72	54.49	51.39	58.93	60.10	45.46	49.53	50.03
# of Events w/ RR/SIRV	497	580	5,376	567	1,353	11,619	381	683	5,252
RR/SIRV Responses	497	580	5,421	567	1,353	11,722	381	683	5,288
RR/SIRV Activities	532	622	5,882	596	1,476	12,882	399	741	5,691

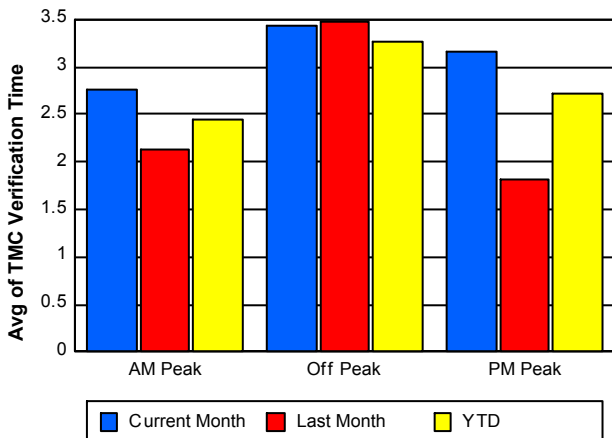
### Number of Events / Peak Period



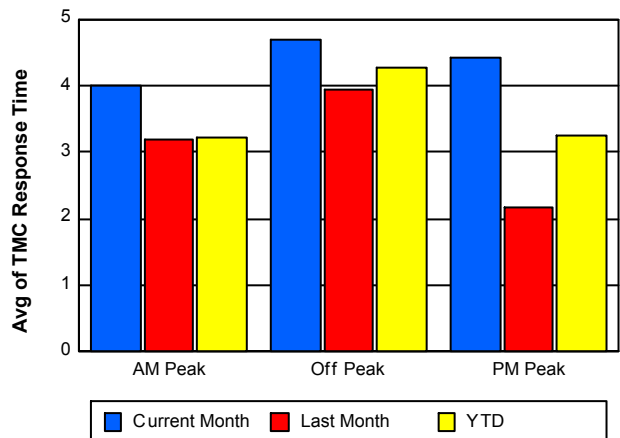
### TMC Detection Time



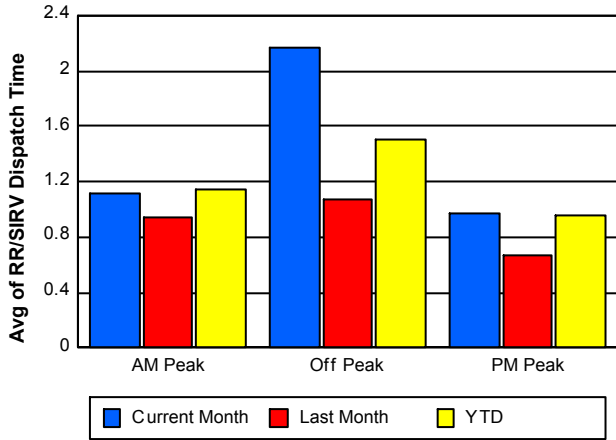
### TMC Verification Time



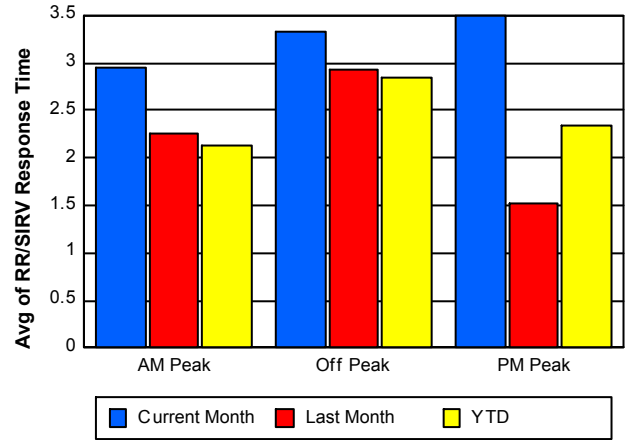
### TMC Response Time



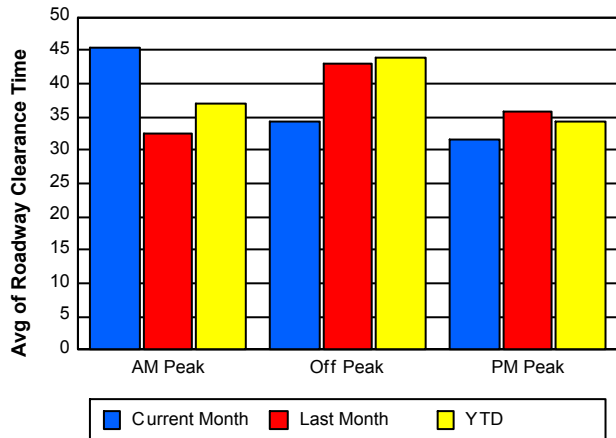
### Road Ranger / SIRV Dispatch Time



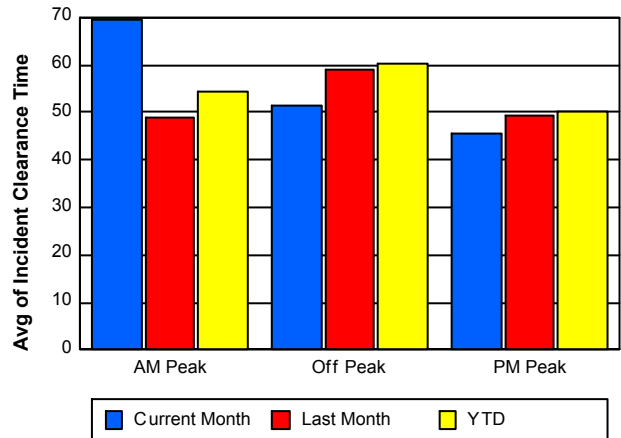
### Road Ranger / SIRV Response Time



### Roadway Clearance Time (2A)



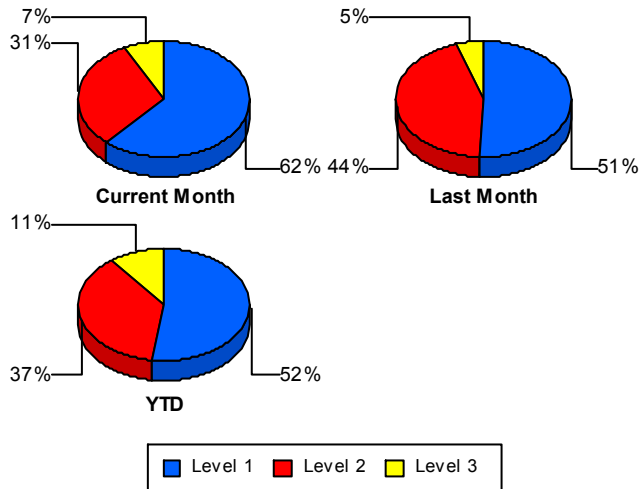
### Incident Clearance Time (3B)



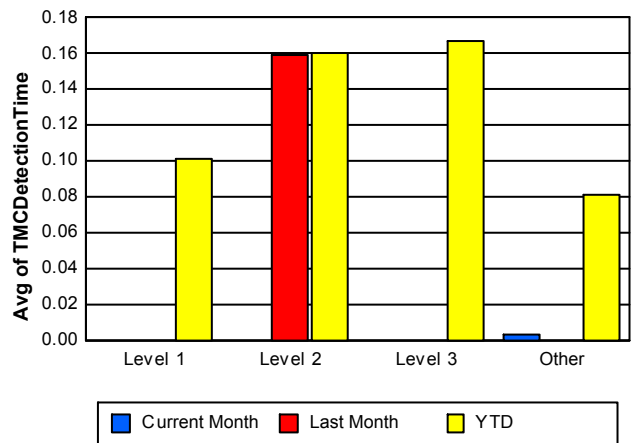
## Performance Measures by Severity

	Level 1			Level 2			Level 3			Other		
	<u>This Month</u>	<u>Last Month</u>	<u>YTD</u>	<u>This Month</u>	<u>Last Month</u>	<u>YTD</u>	<u>This Month</u>	<u>Last Month</u>	<u>YTD</u>	<u>This Month</u>	<u>Last Month</u>	<u>YTD</u>
Number of Events	58	60	689	29	52	492	7	6	141	1,617	2,575	22,036
Number of Incidents	58	60	689	29	52	492	7	6	141	0	0	0
TMC Detection (min.)	0.00	0.00	0.10	0.00	0.16	0.16	0.00	0.00	0.17	0.00	0.00	0.08
TMC Verification (min.)	2.16	2.94	2.26	3.95	5.91	6.38	3.85	14.29	4.91	3.16	2.65	2.86
TMC Response (min.)	5.29	4.50	4.49	5.03	11.18	9.51	13.71	17.18	11.12	4.32	3.09	3.59
RR Dispatch Time (min.)	1.19	1.52	1.51	1.43	3.93	2.89	5.57	1.37	4.63	1.49	0.86	1.22
RR Resp. Time (min.)	4.09	2.98	3.04	3.60	7.26	6.62	8.14	15.81	7.13	3.19	2.27	2.42
Event Clearance (min.)	32.91	31.30	32.28	71.34	67.20	69.67	183.21	172.39	129.38	74.08	35.21	47.04
Roadway Clear. (min.)	12.31	13.75	13.06	51.90	53.76	56.07	184.43	161.57	117.43			
Incident Clearance (min.)	32.91	31.30	32.28	71.34	67.20	69.67	183.21	172.39	129.38			
# of Events w/ RR/SIRV	50	59	631	18	52	463	3	5	122	1,374	2,500	21,031
RR/SIRV Responses	50	59	651	18	52	491	3	5	151	1,374	2,500	21,138
RR/SIRV Activities	69	77	814	26	73	690	3	16	240	1,429	2,673	22,711

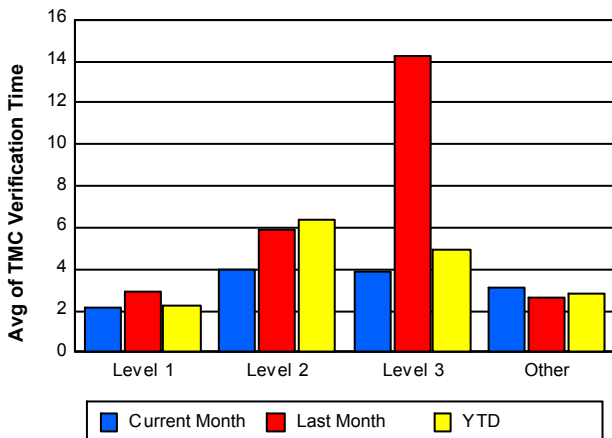
### Number of Events / Severity



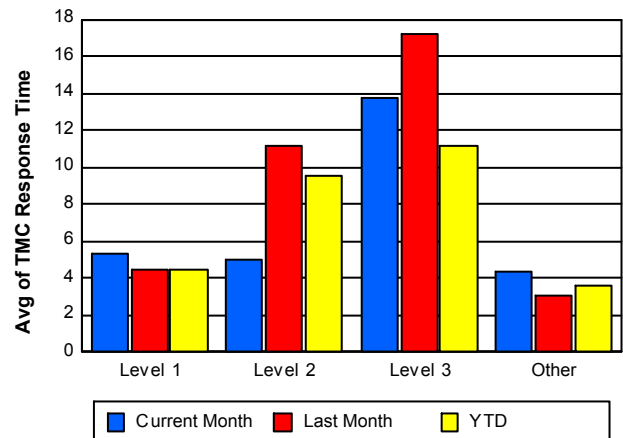
### TMC Detection Time



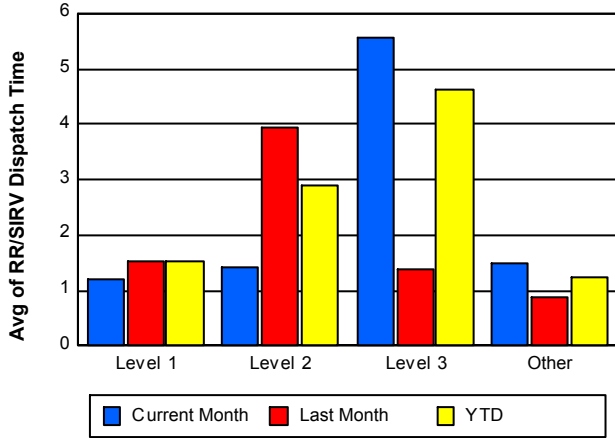
### TMC Verification Time



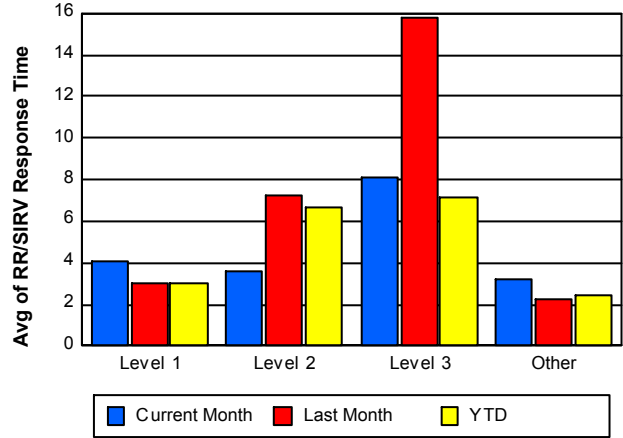
### TMC Response Time



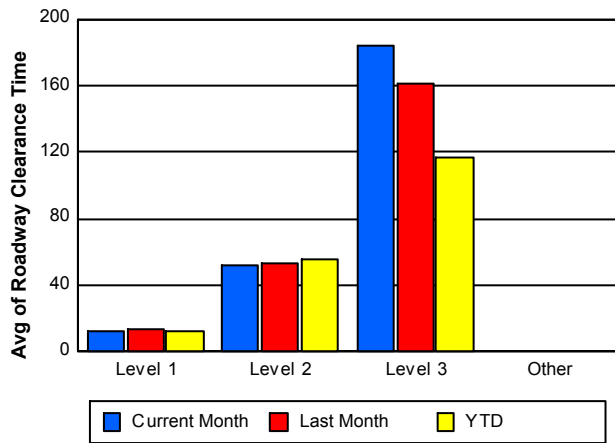
## Road Ranger / SIRV Dispatch Time



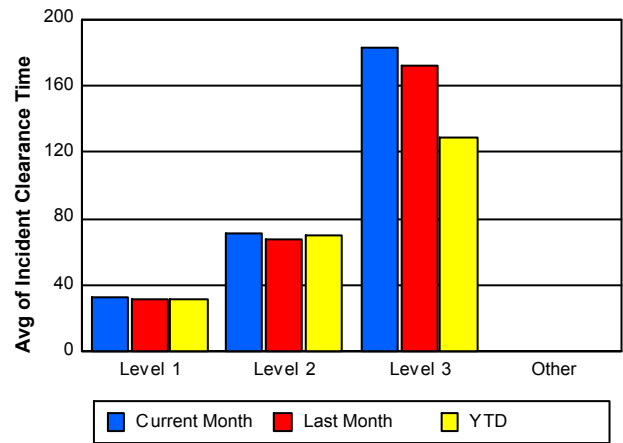
## Road Ranger / SIRV Response Time



## Roadway Clearance Time (2A)



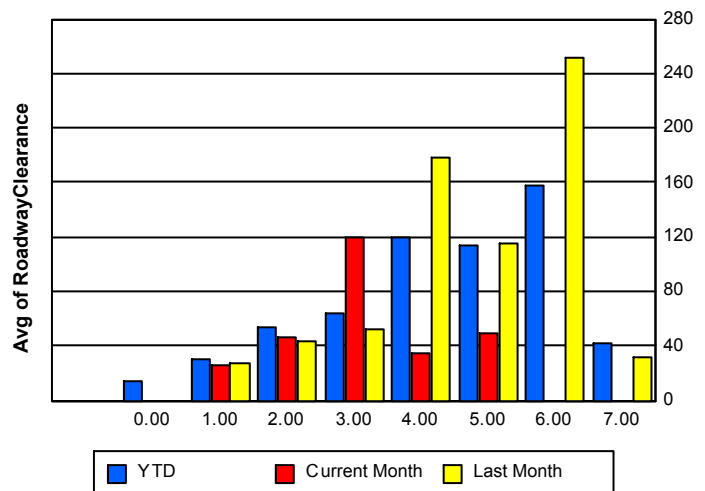
## Incident Clearance Time (3B)



## Roadway Clearance by Maximum Number of Lanes Blocked

	Current Month	Last Month	YTD
	0.00	0.00	
0			14.70
1	25.39	27.40	29.75
2	46.62	43.01	53.74
3	119.18	51.71	63.67
4	34.70	178.70	120.34
5	49.97	114.79	113.35
6	0.00	251.67	157.15

## Roadway Clearance Time (2A)



	Current Month	Last Month	YTD
7	<b>0.00</b>	<b>31.48</b>	<b>41.44</b>

## Performance Measures by Roadway

**95**

	<u>Current Month</u>	<u>Last Month</u>	<u>YTD</u>
Number of Events	1,711	2,693	23,355
Number of Incidents	94	118	1,320
TMC Detection (min.)	0.00	0.00	0.08
TMC Verification (min.)	3.14	2.74	2.93
TMC Response (min.)	4.39	3.32	3.78
RR Dispatch Time (min.)	1.49	0.94	1.28
RR Resp. Time (min.)	3.24	2.41	2.56
Event Clearance (min.)	73.08	36.04	47.57
Roadway Clear. (min.)	37.34	38.90	40.18
Incident Clearance (min.)	55.96	54.29	56.55
# of Events w/ RR/SIRV	1,445	2,616	22,245
RR/SIRV Responses	1,445	2,616	22,429
RR/SIRV Activities	1,527	2,839	24,454

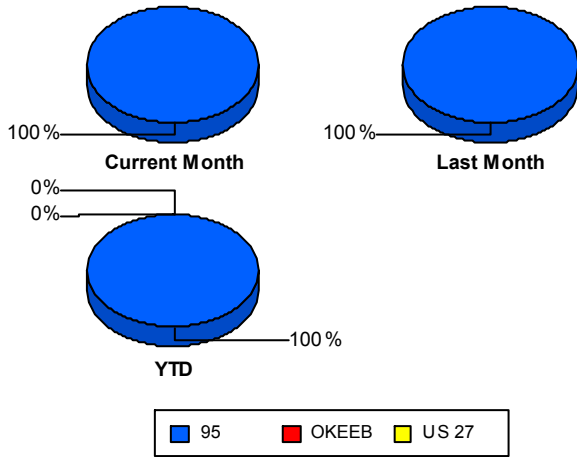
**OKEEB**

	<u>YTD</u>
Number of Events	2
Number of Incidents	2
TMC Detection (min.)	0.00
TMC Verification (min.)	12.48
TMC Response (min.)	7.78
RR Dispatch Time (min.)	4.42
RR Resp. Time (min.)	2.63
Event Clearance (min.)	54.35
Roadway Clear. (min.)	50.14
Incident Clearance (min.)	54.35
# of Events w/ RR/SIRV	2
RR/SIRV Responses	2
RR/SIRV Activities	1

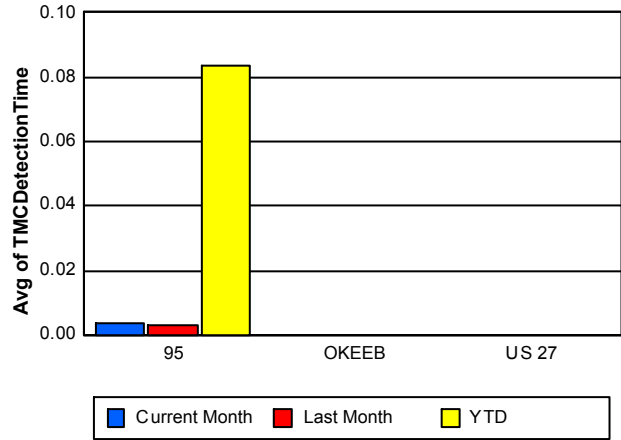
**US 27**

	<u>YTD</u>
Number of Events	1
Number of Incidents	0
TMC Detection (min.)	0.00
TMC Verification (min.)	
TMC Response (min.)	
RR Dispatch Time (min.)	
RR Resp. Time (min.)	
Event Clearance (min.)	125.57
Roadway Clear. (min.)	
Incident Clearance (min.)	
# of Events w/ RR/SIRV	0
RR/SIRV Responses	0
RR/SIRV Activities	0

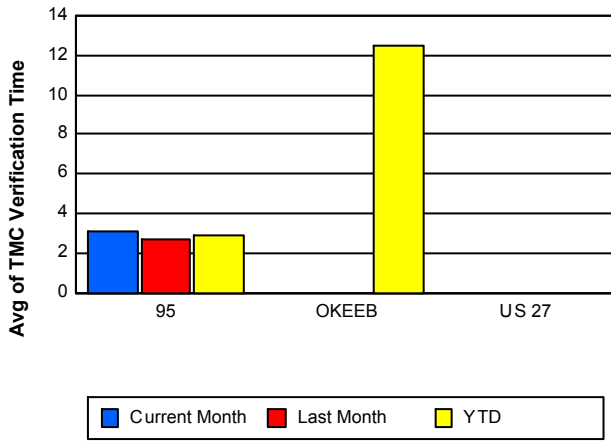
## Number of Events / Roadway



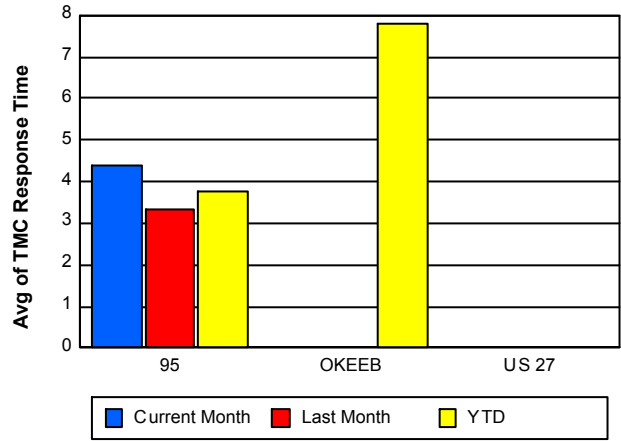
## TMC Detection Time



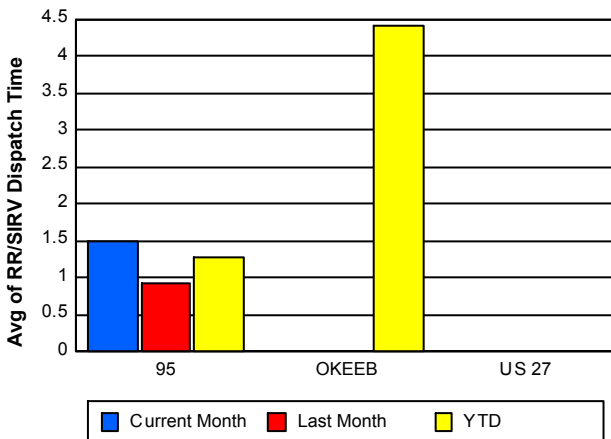
## TMC Verification Time



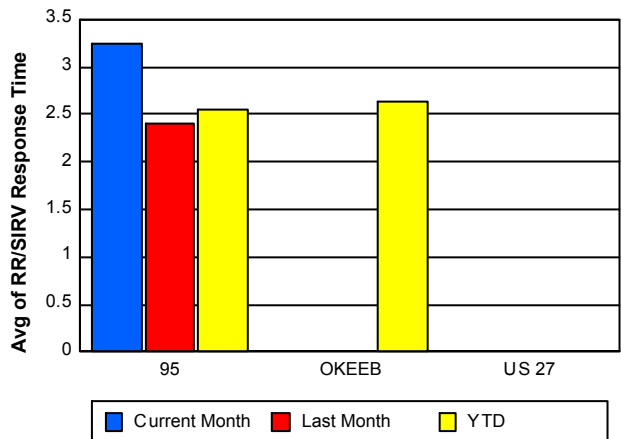
## TMC Response Time



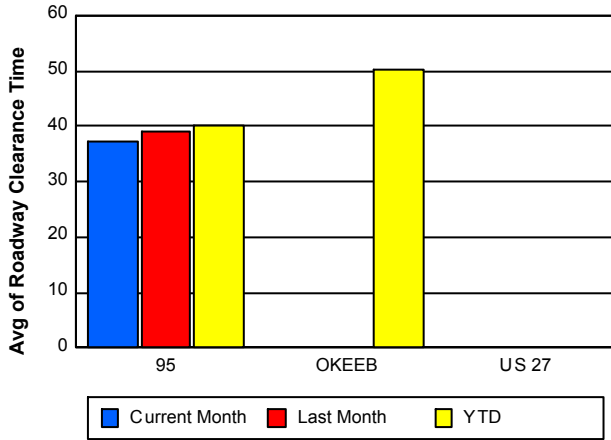
## Road Ranger / SIRV Dispatch Time



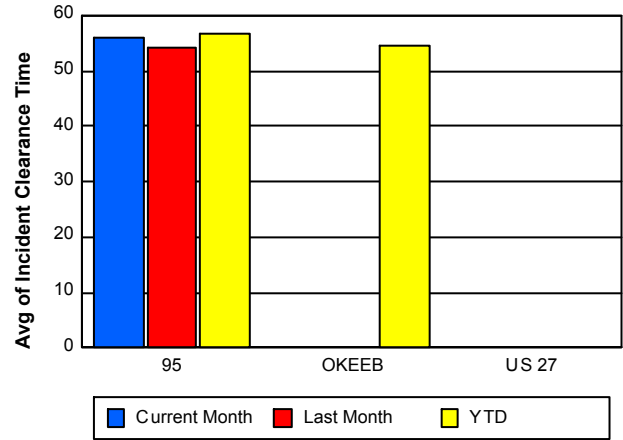
## Road Ranger / SIRV Response Time



## Roadway Clearance Time (2A)



## Incident Clearance Time (3B)



## Performance Measures by Event Type

### Abandoned Vehicle

	<u>Current Month</u>	<u>Last Month</u>	<u>YTD</u>
Number of Events	321	470	4,135
Number of Incidents	1	3	17
TMC Detection (min.)	0.00	0.00	0.05
TMC Verification (min.)	0.34	0.30	0.52
TMC Response (min.)	0.80	0.67	1.83
RR Dispatch Time (min.)	2.16	0.20	1.40
RR Response Time (min.)	0.44	0.47	0.61
Event Clearance (min.)	278.24	118.95	172.36
Roadway Clearance (min.)	6.68	44.87	87.72
Incident Clearance (min.)	12.77	56.62	38.65
# of Events w/ RR/SIRV	244	413	3,476
RR/SIRV Assists	244	413	3,491
RR/SIRV Activities	245	418	3,594

### Accident

	<u>Current Month</u>	<u>Last Month</u>	<u>YTD</u>
Number of Events	130	175	1,760
Number of Incidents	47	76	834
TMC Detection (min.)	0.04	0.05	0.14
TMC Verification (min.)	5.57	5.90	5.09
TMC Response (min.)	7.40	8.22	7.15
RR Dispatch Time (min.)	2.06	2.09	2.05
RR Response Time (min.)	5.34	6.13	5.20
Event Clearance (min.)	62.07	58.62	58.66
Roadway Clearance (min.)	43.36	48.53	46.96
Incident Clearance (min.)	73.00	68.59	69.36
# of Events w/ RR/SIRV	100	174	1,662
RR/SIRV Assists	100	174	1,741
RR/SIRV Activities	129	233	2,175

### Congestion

	<u>Current Month</u>	<u>Last Month</u>	<u>YTD</u>
Number of Events	5	2	33
Number of Incidents	0	0	0
TMC Detection (min.)	0.00	0.00	0.01
TMC Verification (min.)	0.00	0.00	0.24
TMC Response (min.)	0.00		13.27
RR Dispatch Time (min.)	3.40		4.06
RR Response Time (min.)	0.00		9.91
Event Clearance (min.)	28.25	64.32	38.53
Roadway Clearance (min.)			
Incident Clearance (min.)			
# of Events w/ RR/SIRV	2	0	8
RR/SIRV Assists	2	0	8
RR/SIRV Activities	1	0	7

## Debris on Roadway

	<u>Current Month</u>	<u>Last Month</u>	<u>YTD</u>
Number of Events	105	163	1,229
Number of Incidents	12	9	115
TMC Detection (min.)	0.00	0.00	0.07
TMC Verification (min.)	8.11	8.03	6.67
TMC Response (min.)	8.53	7.33	7.00
RR Dispatch Time (min.)	2.03	1.67	1.58
RR Response Time (min.)	6.54	5.67	5.42
Event Clearance (min.)	13.11	11.71	11.92
Roadway Clearance (min.)	14.46	12.20	16.09
Incident Clearance (min.)	16.91	14.54	19.49
# of Events w/ RR/SIRV	102	161	1,213
RR/SIRV Assists	102	161	1,224
RR/SIRV Activities	105	168	1,307

## Disabled Vehicle

	<u>Current Month</u>	<u>Last Month</u>	<u>YTD</u>
Number of Events	1,065	1,851	15,754
Number of Incidents	23	26	278
TMC Detection (min.)	0.00	0.00	0.09
TMC Verification (min.)	3.38	2.54	2.99
TMC Response (min.)	4.50	3.02	3.49
RR Dispatch Time (min.)	1.18	0.92	1.12
RR Response Time (min.)	3.36	2.14	2.40
Event Clearance (min.)	22.85	14.99	16.38
Roadway Clearance (min.)	26.56	18.05	24.28
Incident Clearance (min.)	32.29	23.33	32.42
# of Events w/ RR/SIRV	959	1,841	15,524
RR/SIRV Assists	959	1,841	15,591
RR/SIRV Activities	1,021	1,989	16,977

## Emergency Vehicles

	<u>Current Month</u>	<u>YTD</u>
Number of Events	3	8
Number of Incidents	3	6
TMC Detection (min.)	0.00	2.51
TMC Verification (min.)	0.00	2.80
TMC Response (min.)	2.04	1.08
RR Dispatch Time (min.)	1.98	0.89
RR Response Time (min.)	0.06	0.19
Event Clearance (min.)	18.78	25.43
Roadway Clearance (min.)	10.63	20.14
Incident Clearance (min.)	18.78	28.49
# of Events w/ RR/SIRV	3	8
RR/SIRV Assists	3	8
RR/SIRV Activities	3	8

## Off Ramp Backup

	<u>Current Month</u>	<u>Last Month</u>	<u>YTD</u>
Number of Events	2	4	6
Number of Incidents	0	0	0
TMC Detection (min.)	0.00	0.00	0.00
TMC Verification (min.)	0.00	0.00	0.00
TMC Response (min.)			
RR Dispatch Time (min.)			
RR Response Time (min.)			
Event Clearance (min.)	35.55	50.16	45.29
Roadway Clearance (min.)			
Incident Clearance (min.)			
# of Events w/ RR/SIRV	0	0	0
RR/SIRV Assists	0	0	0
RR/SIRV Activities	0	0	0

## Other

	<u>Current Month</u>	<u>Last Month</u>	<u>YTD</u>
Number of Events	59	13	219
Number of Incidents	0	0	7
TMC Detection (min.)	0.00	0.00	0.04
TMC Verification (min.)	0.69	13.35	7.52
TMC Response (min.)	7.04	13.83	14.06
RR Dispatch Time (min.)	1.87	2.51	3.55
RR Response Time (min.)	4.96	11.20	10.20
Event Clearance (min.)	13.54	16.69	23.20
Roadway Clearance (min.)			17.35
Incident Clearance (min.)			21.04
# of Events w/ RR/SIRV	27	13	168
RR/SIRV Assists	27	13	170
RR/SIRV Activities	15	12	167

## Pedestrian

	<u>YTD</u>
Number of Events	32
Number of Incidents	0
TMC Detection (min.)	0.04
TMC Verification (min.)	1.39
TMC Response (min.)	1.38
RR Dispatch Time (min.)	0.27
RR Response Time (min.)	1.11
Event Clearance (min.)	15.13
Roadway Clearance (min.)	
Incident Clearance (min.)	
# of Events w/ RR/SIRV	32
RR/SIRV Assists	32
RR/SIRV Activities	33

## Police Activity

	<u>Current Month</u>	<u>Last Month</u>	<u>YTD</u>
Number of Events	11	4	61
Number of Incidents	5	2	43
TMC Detection (min.)	0.00	0.00	0.20
TMC Verification (min.)	0.00	2.70	1.76
TMC Response (min.)	0.00	9.80	9.46
RR Dispatch Time (min.)	0.00	2.43	5.02
RR Response Time (min.)	0.00	7.37	4.33
Event Clearance (min.)	45.42	53.60	53.43
Roadway Clearance (min.)	61.48	41.73	48.74
Incident Clearance (min.)	69.90	85.43	67.54
# of Events w/ RR/SIRV	2	4	43
RR/SIRV Assists	2	4	49
RR/SIRV Activities	2	4	55

## Vehicle Fire

	<u>Current Month</u>	<u>Last Month</u>	<u>YTD</u>
Number of Events	4	3	22
Number of Incidents	3	2	13
TMC Detection (min.)	0.00	0.00	0.00
TMC Verification (min.)	0.00	0.00	2.94
TMC Response (min.)		0.92	4.83
RR Dispatch Time (min.)		0.46	1.65
RR Response Time (min.)		0.46	3.18
Event Clearance (min.)	121.12	43.73	434.88
Roadway Clearance (min.)	114.03	52.37	55.77
Incident Clearance (min.)	155.03	57.77	74.25
# of Events w/ RR/SIRV	0	3	17
RR/SIRV Assists	0	3	17
RR/SIRV Activities	0	5	21

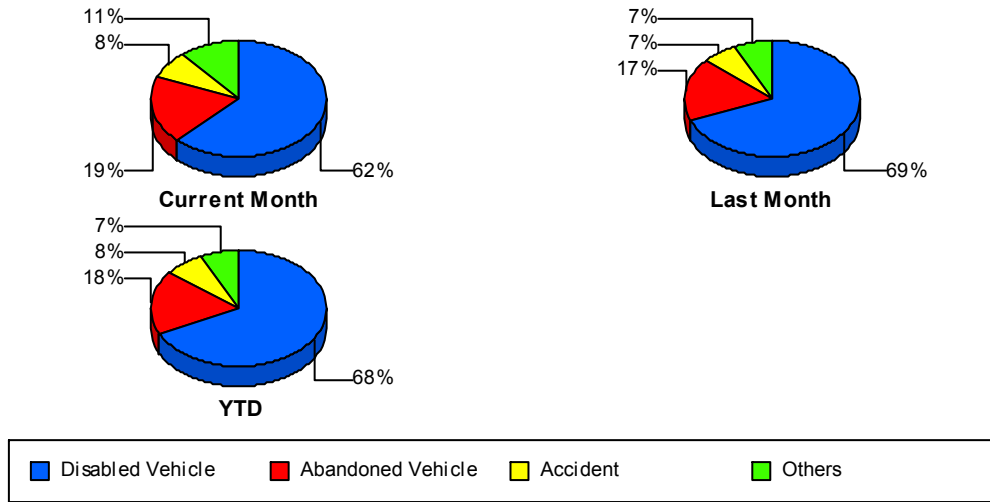
## Visibility

	<u>Last Month</u>	<u>YTD</u>
Number of Events	1	7
Number of Incidents	0	5
TMC Detection (min.)	0.00	0.00
TMC Verification (min.)	0.00	1.26
TMC Response (min.)		17.63
RR Dispatch Time (min.)		7.16
RR Response Time (min.)		10.47
Event Clearance (min.)	32.23	37.35
Roadway Clearance (min.)		29.89
Incident Clearance (min.)		35.95
# of Events w/ RR/SIRV	0	5
RR/SIRV Assists	0	5
RR/SIRV Activities	0	7

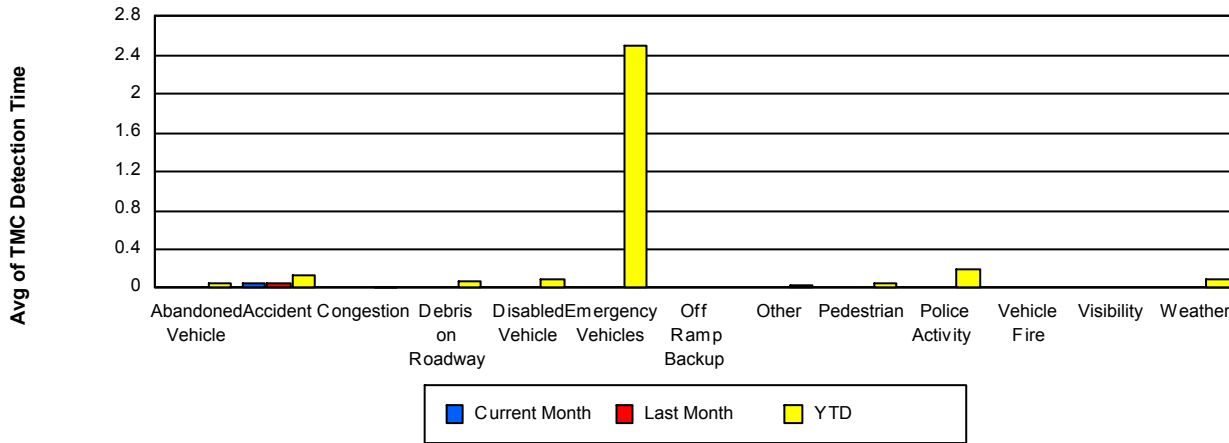
## Weather

	<u>Last Month</u>	<u>YTD</u>
Number of Events	1	7
Number of Incidents	0	4
TMC Detection (min.)	0.00	0.09
TMC Verification (min.)	0.00	8.35
TMC Response (min.)	0.00	10.26
RR Dispatch Time (min.)	0.00	2.93
RR Response Time (min.)	0.00	7.33
Event Clearance (min.)	249.55	153.13
Roadway Clearance (min.)		170.23
Incident Clearance (min.)		159.05
# of Events w/ RR/SIRV	1	6
RR/SIRV Assists	1	10
RR/SIRV Activities	4	15

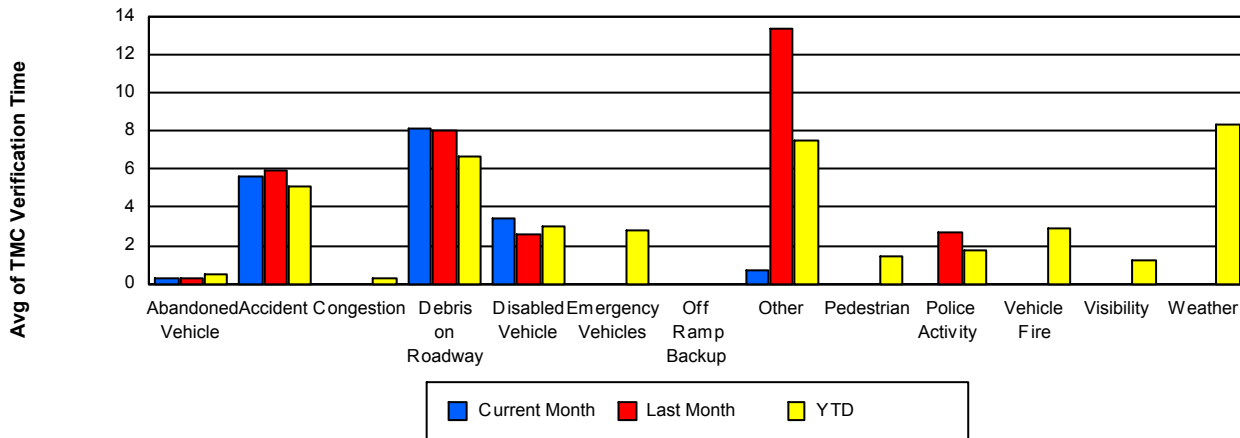
## Number of Events / Event Type



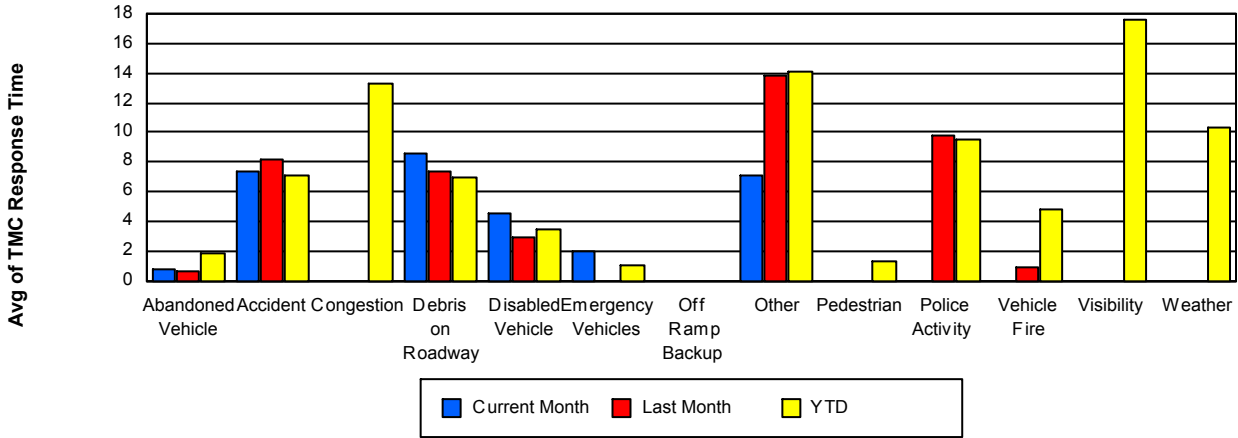
## TMC Detection Time



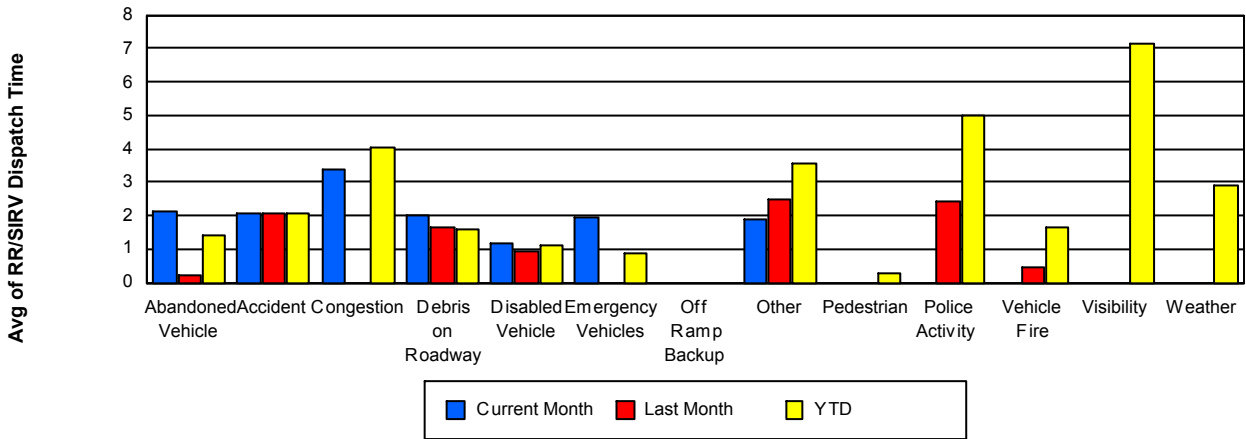
## TMC Verification Time



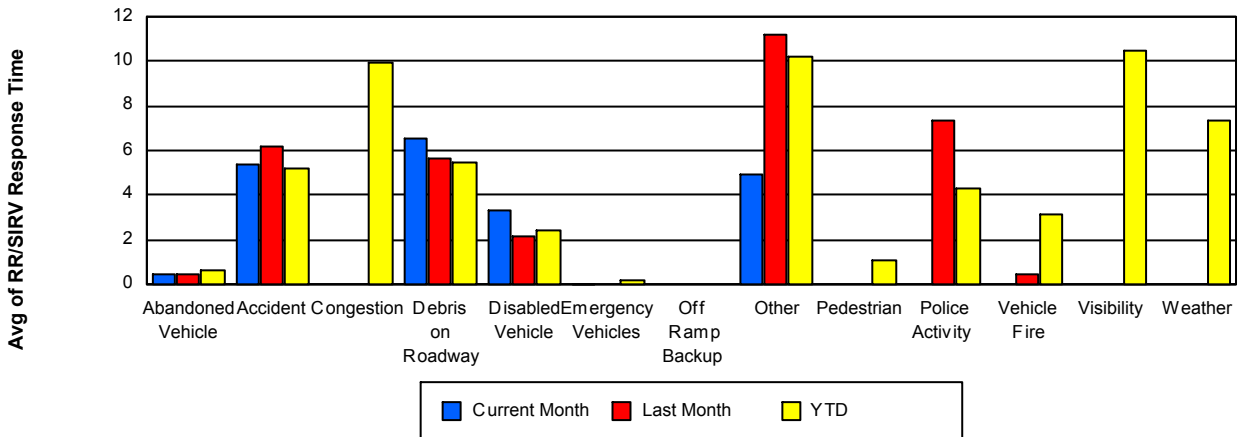
## TMC Response Time



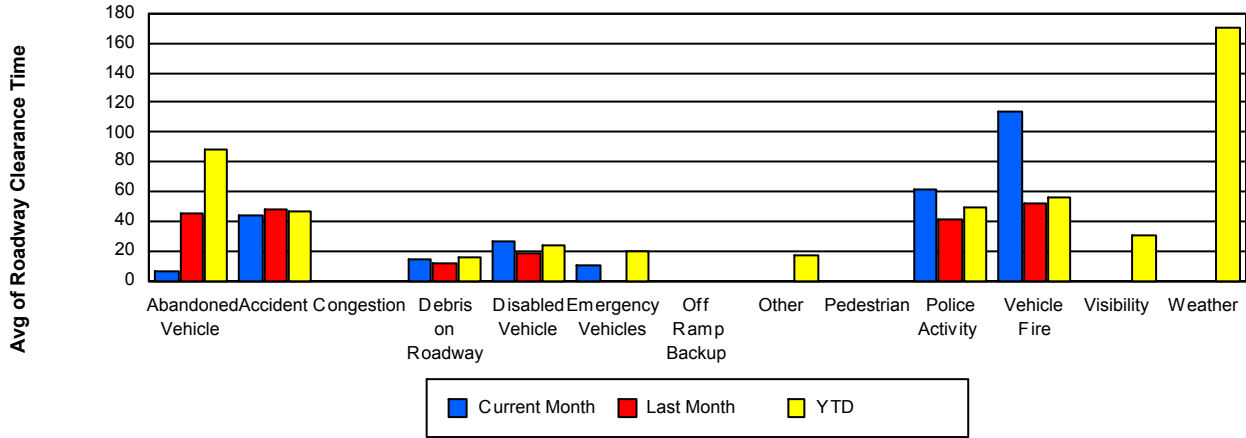
## Road Ranger / SIRV Dispatch Time



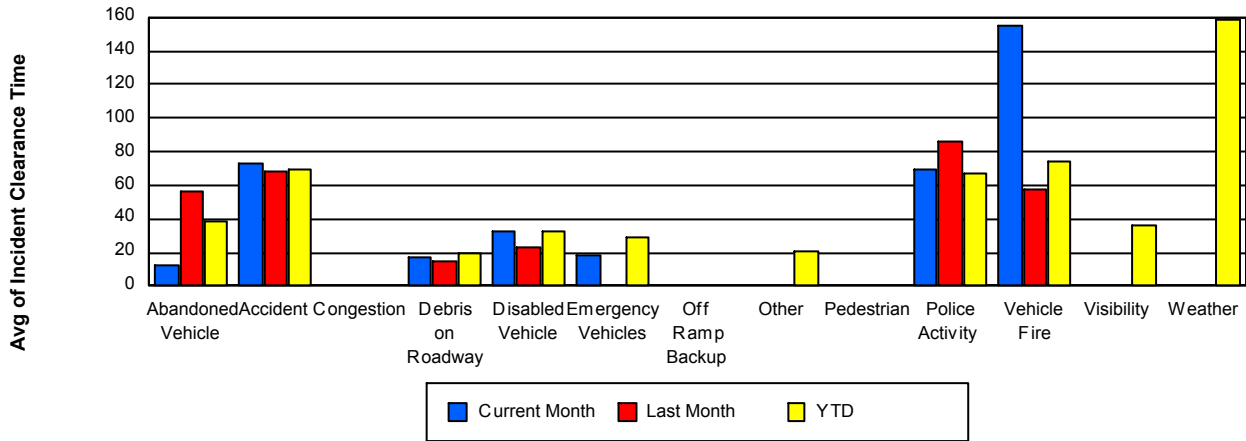
## Road Ranger / SIRV Response Time



## Roadway Clearance Time (2A)



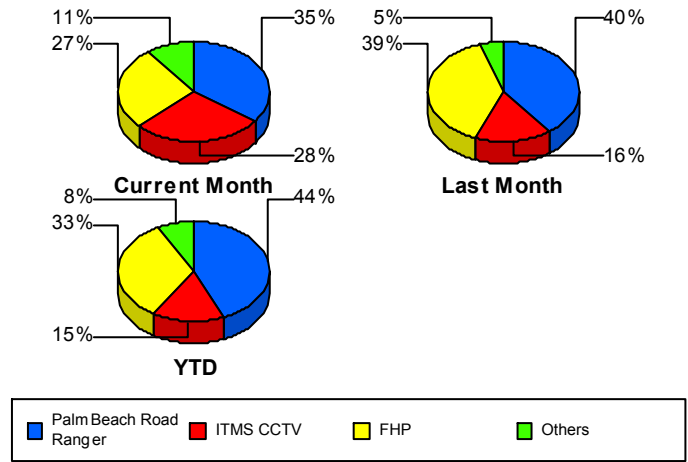
## Incident Clearance Time (3B)



## Incident Detection Methods

	Current Month	Last Month	YTD
Broward CCTV	3	0	4
Broward Road Ranger	1	0	9
Broward TMC	0	0	1
Construction CEI	0	0	6
District 4	3	1	49
FDOT Maintenance	0	1	2
FHP	25	46	441
ITMS	1	1	7
ITMS CCTV	26	19	201
Media	1	0	1
Motorist	0	3	19
Palm Beach Road Rang	33	47	576
Road Watcher	0	0	2
SmarTraveler (511)	1	0	4
<b>Total</b>	<b>94</b>	<b>118</b>	<b>1,322</b>

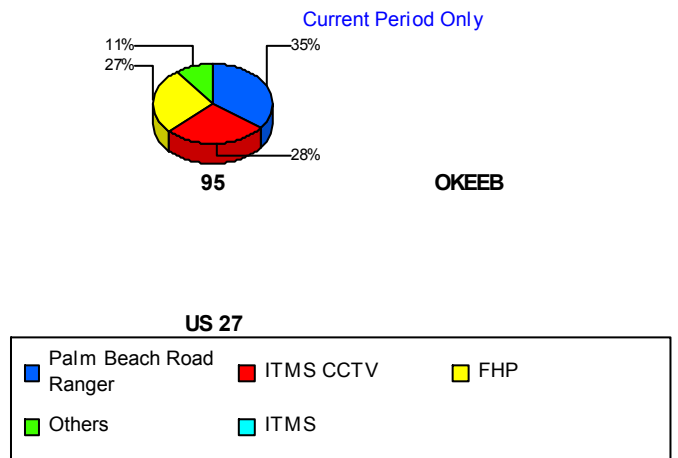
### Total Incidents by Detection Method



## Incident Detection Methods by Roadway

		Current Month	Last Month	YTD
95	Broward CCTV	3	0	4
	Broward Road Ranger	1	0	9
	Broward TMC	0	0	1
	Construction CEI	0	0	6
	District 4	3	1	49
	FDOT Maintenance	0	1	2
	FHP	25	46	439
	ITMS	1	1	7
	ITMS CCTV	26	19	201
	Media	1	0	1
	Motorist	0	3	19
	Palm Beach Road Rang	33	47	576

### Total Events by Roadway and Detection Method

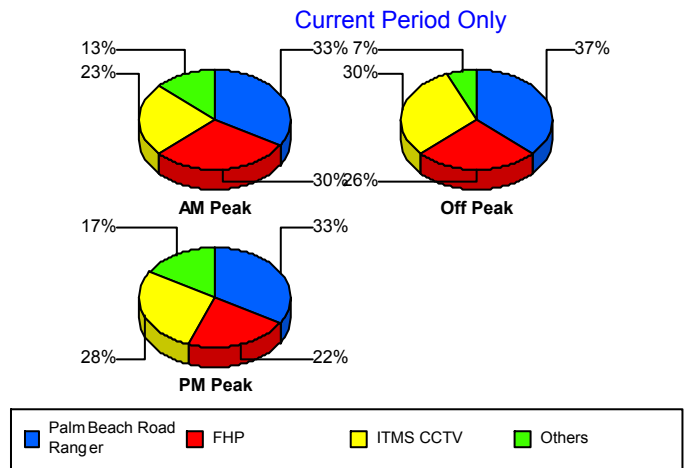


		Current Month	Last Month	YTD
95	Road Watcher	0	0	2
	SmarTraveler (511)	1	0	4
	<b>Total</b>	<b>94</b>	<b>118</b>	<b>1,320</b>
OKEEB	FHP	0	0	2
	<b>Total</b>	<b>0</b>	<b>0</b>	<b>2</b>
<b>Total</b>		<b>94</b>	<b>118</b>	<b>1,322</b>

### Incident Detection Methods by Peak Period

		Current Month	Last Month	YTD
AM Peak	Broward CCTV	1	0	1
	Broward Road Ranger	0	0	3
	Broward TMC	0	0	1
	Construction CEI	0	0	1
	District 4	2	0	21
	FHP	9	14	112
	ITMS	0	0	1
	ITMS CCTV	7	0	45
	Media	1	0	1
	Motorist	0	2	6
	Palm Beach Road Rang	10	9	142
	SmarTraveler (511)	0	0	1
	<b>Total</b>	<b>30</b>	<b>25</b>	<b>335</b>
	Off Peak	Broward CCTV	0	0
Broward Road Ranger		1	0	3
Construction CEI		0	0	5
District 4		1	1	23
FDOT Maintenance		0	1	2
FHP		12	22	251
ITMS		1	1	3
ITMS CCTV		14	8	96
Motorist		0	0	10
Palm Beach Road Rang		17	29	310

Total Events by Peak Period and Detection Method

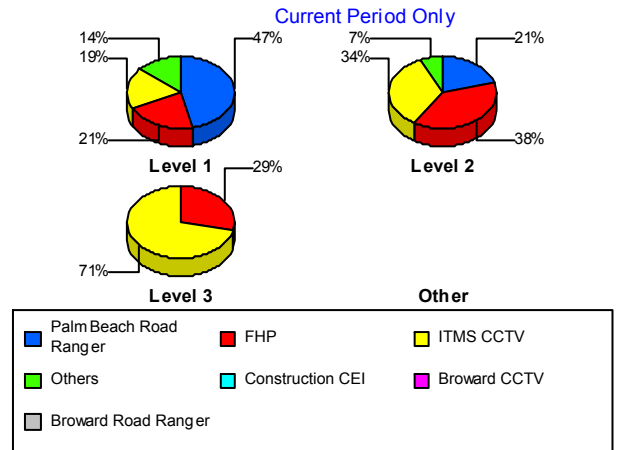


		Current Month	Last Month	YTD
Off Peak	Road Watcher	0	0	2
	SmarTraveler (511)	0	0	1
	<b>Total</b>	<b>46</b>	<b>62</b>	<b>707</b>
PM Peak	Broward CCTV	2	0	2
	Broward Road Ranger	0	0	3
	District 4	0	0	5
	FHP	4	10	78
	ITMS	0	0	3
	ITMS CCTV	5	11	60
	Motorist	0	1	3
	Palm Beach Road Rang	6	9	124
	SmarTraveler (511)	1	0	2
	<b>Total</b>	<b>18</b>	<b>31</b>	<b>280</b>
<b>Total</b>	<b>94</b>	<b>118</b>	<b>1,322</b>	

### Incident Detection Methods by Severity

		Current Month	Last Month	YTD
Level 1	Broward CCTV	3	0	4
	Broward Road Ranger	0	0	7
	Broward TMC	0	0	1
	Construction CEI	0	0	2
	District 4	2	1	34
	FDOT Maintenance	0	1	1
	FHP	12	13	161
	ITMS	1	1	4
	ITMS CCTV	11	6	96
	Media	1	0	1
	Motorist	0	3	10
	Palm Beach Road Rang	27	35	365
	SmarTraveler (511)	1	0	3
	<b>Total</b>	<b>58</b>	<b>60</b>	<b>689</b>
Level 2	Broward Road Ranger	1	0	2

**Total Events by Severity and Detection Method**



		Current Month	Last Month	YTD
Level 2	Construction CEI	0	0	2
	District 4	1	0	13
	FHP	11	28	219
	ITMS	0	0	3
	ITMS CCTV	10	13	74
	Motorist	0	0	9
	Palm Beach Road Rang	6	11	168
	Road Watcher	0	0	1
	SmarTraveler (511)	0	0	1
	Total	29	52	492
Level 3	Construction CEI	0	0	2
	District 4	0	0	2
	FDOT Maintenance	0	0	1
	FHP	2	5	61
	ITMS CCTV	5	0	31
	Palm Beach Road Rang	0	1	43
	Road Watcher	0	0	1
	Total	7	6	141
Total		94	118	1,322

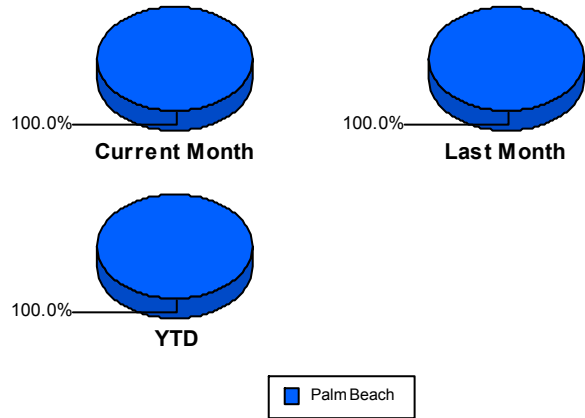
## Road Ranger / SIRV Performance Measures

### Road Ranger / SIRV Performance By County

RR/SIRV Responses per County

Values presented are:  
 - Total Events with a RR/SIRV Response  
 - Total RR/SIRV Responses,  
 - Total Activities Performed

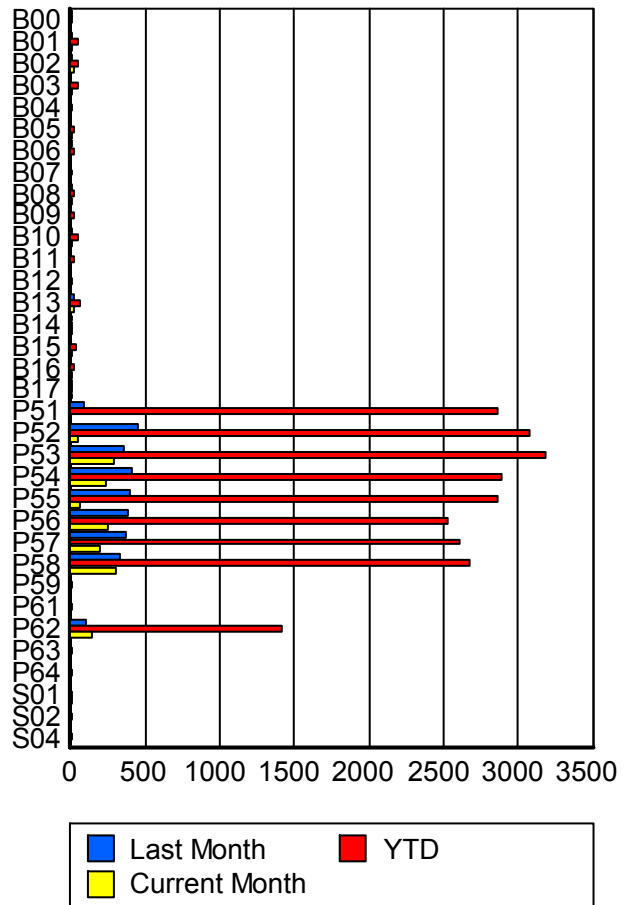
	Current Mo	Last Month	YTD
Palm Beach	1,533	2,810	23,667
	1,573	2,911	24,557
	1,666	3,077	26,184



### Road Ranger / SIRV Performance By Truck

	Current Mo	Last Month	YTD
B00	0	3	12
	0	3	12
	0	3	13
B01	4	12	52
	4	12	52
	4	12	55
B02	22	8	39
	23	9	41
	24	10	43
B03	3	0	46
	3	0	48
	3	0	50
B04	0	0	1
	0	0	1
	0	0	1
B05	4	0	19
	4	0	19
	4	0	20
B06	0	2	15
	0	2	15
	0	2	16
B07	0	0	4
	0	0	4
	0	0	4
B08	3	3	24
	3	3	25
	3	3	25

**RR/SIRV  
Responses per  
Truck**



	Current Mo	Last Month	YTD
B09	0	0	25
	0	0	26
	0	0	27
B10	3	1	51
	3	1	51
	3	1	59
B11	0	0	18
	0	0	18
	0	0	19
B12	0	0	6
	0	0	6
	0	0	6
B13	15	15	56
	15	15	56
	17	16	59
B14	1	1	9
	1	1	9
	1	1	10
B15	1	0	33
	1	0	34
	1	0	36
B16	2	0	14
	2	0	14
	2	0	15
B17	4	1	12
	4	1	12
	4	1	12
P51	0	87	2,844
	0	88	2,862
	0	92	3,052
P52	43	445	3,051
	43	452	3,082
	44	488	3,319
P53	283	355	3,159
	285	356	3,180
	298	373	3,372
P54	227	397	2,854
	229	403	2,882
	243	424	3,073
P55	61	392	2,851
	61	393	2,867
	67	416	3,060
P56	249	378	2,503
	253	382	2,526
	271	411	2,703

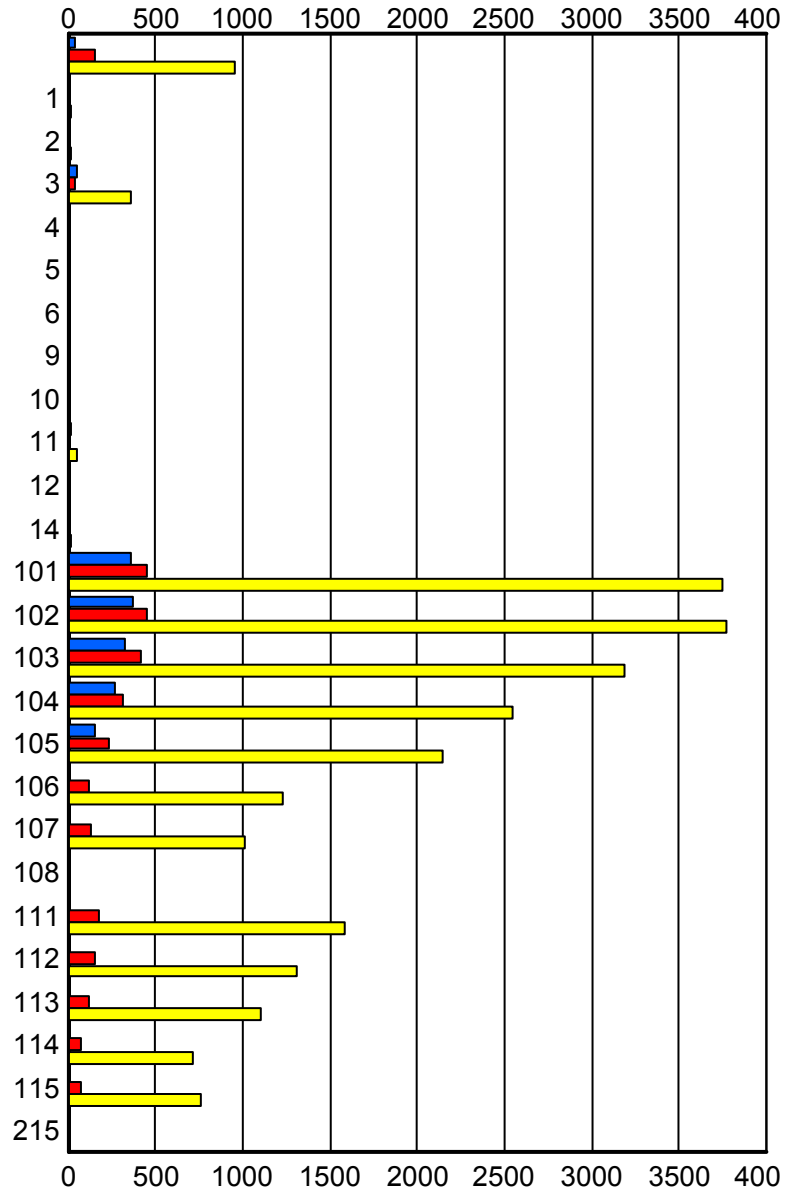
	Current Mo	Last Month	YTD
P57	201	361	2,580
	201	365	2,601
	222	385	2,800
P58	295	320	2,652
	298	322	2,678
	307	334	2,819
P59	0	0	7
	0	0	7
	0	0	7
P61	0	0	7
	0	0	7
	0	0	7
P62	137	99	1,392
	139	103	1,410
	147	105	1,490
P63	0	0	4
	0	0	4
	0	0	4
P64	0	0	3
	0	0	3
	0	0	3
S01	1	0	1
	1	0	1
	1	0	1
S02	0	0	3
	0	0	3
	0	0	3
S04	0	0	1
	0	0	1
	0	0	1

### Road Ranger / SIRV Performance By Beat

	Current Mo	Last Month	YTD
	35	147	947
	35	148	955
	35	154	1,007
1	0	9	21
	0	9	21
	0	9	22
2	0	1	10
	0	1	10
	0	1	10
3	51	36	352
	53	37	362
	56	39	385
4	0	0	8
	0	0	8
	0	0	10
5	0	1	2
	0	1	2
	0	1	2
6	0	0	2
	0	0	2
	0	0	2
9	0	1	1
	0	1	1
	0	1	1
10	0	0	3
	0	0	3
	0	0	3
11	10	5	49
	10	5	50
	10	5	52
12	0	0	2
	0	0	2
	0	0	2
14	0	0	18
	0	0	19
	0	0	21
101	355	447	3,717
	362	452	3,750
	380	486	3,981
102	363	452	3,741
	366	455	3,768
	389	482	4,050
103	321	410	3,165
	323	412	3,188
	352	434	3,417

Values presented are:  
 - Total Events with a RR/SIRV Response  
 - Total RR/SIRV Responses,  
 - Total Activities Performed

### RR/SIRV Responses per Beat



■ Current Month   
 ■ Last Month   
 ■ YTD

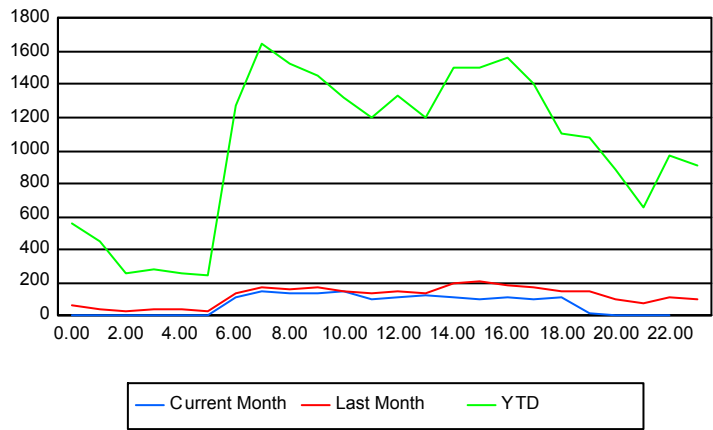
	Current Mo	Last Month	YTD
104	264	317	2,532
	264	318	2,551
	275	334	2,740
105	149	227	2,124
	151	230	2,149
	159	248	2,278
106	0	121	1,214
	0	122	1,225
	0	128	1,299
107	1	122	1,005
	1	126	1,017
	2	130	1,067
108	0	0	1
	0	0	1
	0	0	1
111	0	170	1,566
	0	173	1,581
	0	180	1,680
112	0	153	1,295
	0	156	1,308
	0	162	1,389
113	0	116	1,088
	0	120	1,109
	0	124	1,180
114	0	76	710
	0	77	716
	0	83	758
115	8	68	750
	8	68	757
	8	76	825
215	0	0	2
	0	0	2
	0	0	2

## Road Ranger / SIRV Performance By Time of Day

Values presented are:  
 - Total Events with a RR/SIRV Response  
 - Total RR/SIRV Responses,  
 - Total Activities Performed

	Current Mo	Last Month	YTD
12AM-1AM	3	59	533
	3	59	554
	3	61	587
1AM-2AM	1	42	431
	1	44	455
	1	45	496
2AM-3AM	2	26	247
	2	27	260
	2	28	272
3AM-4AM	1	35	257
	1	41	277
	1	44	301
4AM-5AM	0	31	231
	0	34	256
	0	35	277
5AM-6AM	3	30	210
	3	33	240
	3	33	257
6AM-7AM	116	133	1,234
	117	135	1,269
	124	146	1,358
7AM-8AM	148	172	1,602
	148	177	1,643
	159	187	1,747
8AM-9AM	134	152	1,471
	135	159	1,526
	147	163	1,622
9AM-10AM	131	168	1,399
	139	171	1,452
	148	183	1,568
10AM-11AM	135	146	1,275
	144	151	1,321
	149	163	1,416
11AM-12PM	94	126	1,153
	95	131	1,196
	101	134	1,270
12PM-1PM	110	141	1,279
	115	146	1,338
	122	156	1,432

## Number of Responses / Hour of the Day



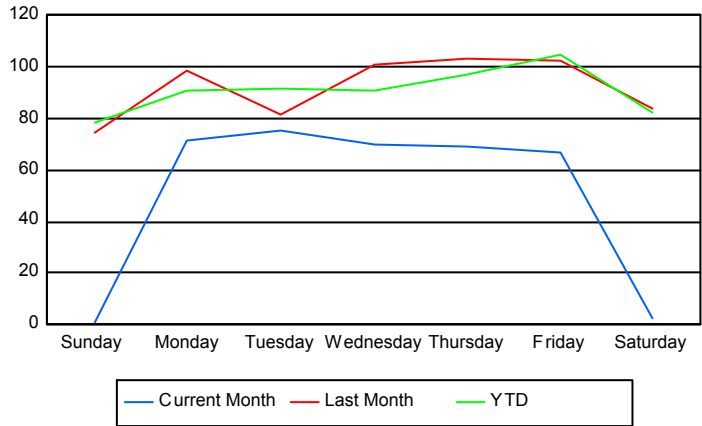
	Current Mo	Last Month	YTD
1PM-2PM	117	131	1,146
	121	139	1,205
	126	148	1,300
2PM-3PM	111	187	1,466
	114	192	1,501
	121	203	1,609
3PM-4PM	98	206	1,470
	101	211	1,505
	108	234	1,593
4PM-5PM	105	188	1,522
	106	190	1,558
	108	202	1,665
5PM-6PM	100	164	1,356
	101	172	1,400
	111	181	1,485
6PM-7PM	104	144	1,065
	106	150	1,103
	111	154	1,156
7PM-8PM	16	147	1,039
	17	154	1,076
	17	160	1,130
8PM-9PM	3	99	852
	3	103	884
	3	110	936
9PM-10PM	0	72	621
	0	73	654
	0	77	689
10PM-11PM	1	112	934
	1	117	972
	1	126	1,039
11PM-12AM	0	99	874
	0	102	912
	0	104	979

**Road Ranger / SIRV Performance By Day of Week**

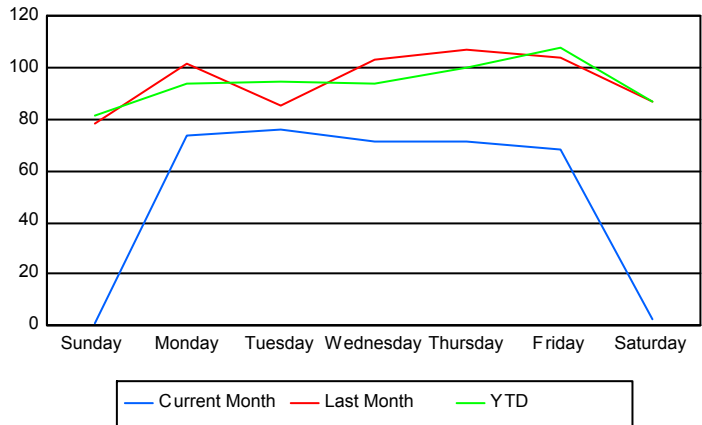
Values presented are: - Total Events with a RR/SIRV Response - Total RR/SIRV Responses, - Total Activities Performed
---

	Current Mo	Last Month	YTD
Sunday	1 1 1	369 389 422	2,676 2,793 3,006
Monday	349 360 384	388 400 417	3,469 3,573 3,778
Tuesday	365 369 390	319 334 348	3,571 3,694 3,901
Wednesday	274 282 294	403 413 431	3,456 3,560 3,784
Thursday	273 281 302	410 427 452	3,702 3,832 4,098
Friday	265 273 288	508 516 551	3,970 4,110 4,430
Saturday	7 7 7	416 432 456	2,857 2,995 3,187

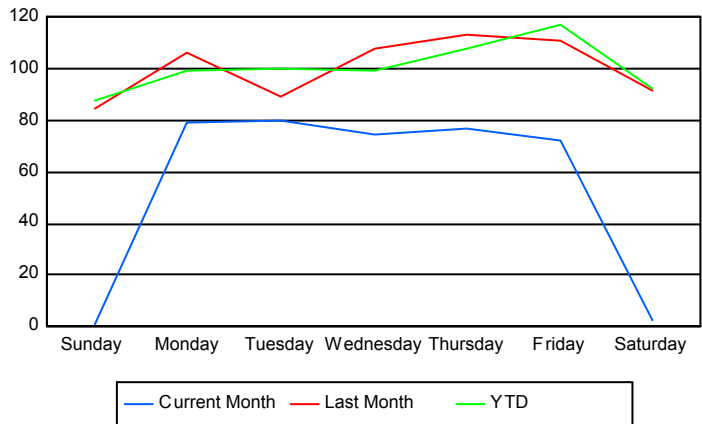
**Avg # of events with a RR/SIRV Response per Day of the Week**



**Avg # of RR/SIRV Responses per Day of the Week**



**Avg # of RR/SIRV Activities Performed per Day of the Week**



### Road Ranger / SIRV Responses per Time of Day and Day of Week

