



# Monthly Performance Measures Report Palm Beach County



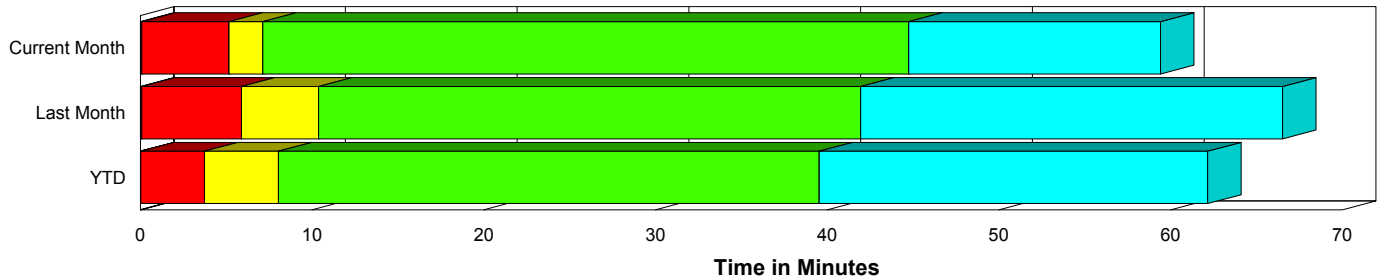
Created on:  
November 02, 2009  
1:33 pm

Period From Oct 1, 2009 to Oct 31, 2009

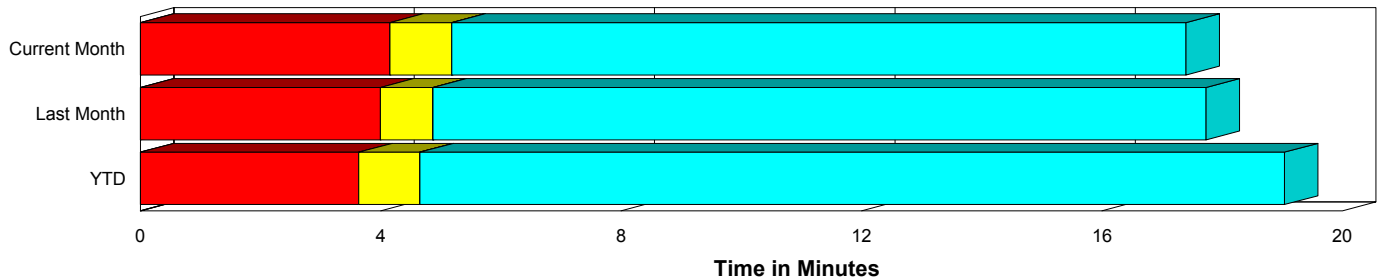
## Performance Measures Summary

	Traffic Events (No Lanes Blocked)			Incidents (Lanes Blocked)		
	<u>This Month</u>	<u>Last Month</u>	<u>YTD</u>	<u>This Month</u>	<u>Last Month</u>	<u>YTD</u>
Number of Events	2,007	1,922	13,992	108	106	926
TMC Detection (min.)	0.00	0.00	0.00	0.08	0.08	0.04
TMC Verification (min.)	4.15	3.99	3.63	5.09	5.81	3.71
TMC Response (min.)	5.34	5.04	5.21	7.51	10.59	8.73
RR Dispatch Time (min.)	1.51	1.42	1.66	1.80	2.93	3.72
RR Response Time (min.)	3.93	3.73	3.64	5.74	7.62	4.98
Roadway Clearance (min.)				43.46	41.16	48.16
Event Clearance (min.)	17.56	17.91	19.60	54.70	65.71	70.10
# of Events w/ RR/SIRV	1,980	1,879	12,277	103	104	741
RR/SIRV Responses	1,980	1,879	12,277	103	104	741
RR/SIRV Activities	2,147	2,026	13,344	144	145	1,068

### Incident Clearance Time-Line



### Traffic Event (Non-Lane Blockage) Time-Line



<span style="color: blue;">■</span> Avg. TMC Detection Time	<span style="color: green;">■</span> Avg. Time from TMC Response to Roadway Clearance*
<span style="color: red;">■</span> Avg. Time from TMC Detection to TMC Verification	<span style="color: cyan;">■</span> Avg. Time from Roadway Clearance to Incident/Event Clearance**
<span style="color: yellow;">■</span> Avg. Time from TMC Verification to TMC Response	

\* Roadway clearance equals all travel lanes open

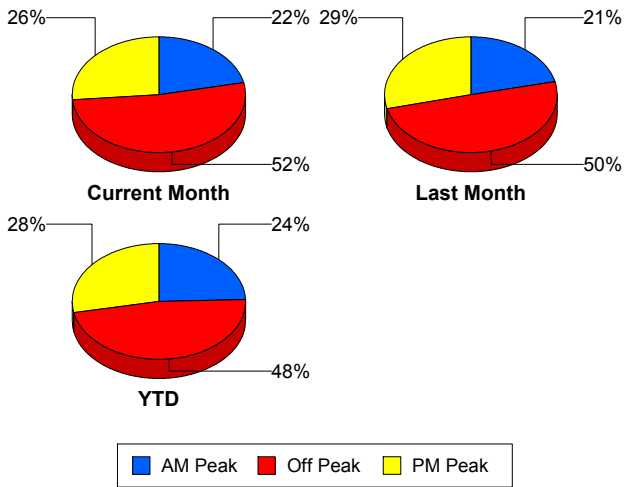
\*\* Incident clearance equals time when last responder has left the scene

## Performance Measures by Peak Period

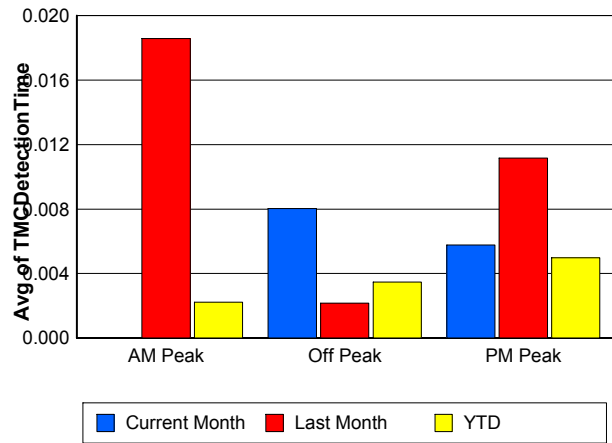
Note: AM peak period is defined as 6am to 10am and PM peak period is defined as 3pm to 7pm.

	AM Peak			Off Peak			PM Peak		
	<u>Current Month</u>	<u>Last Month</u>	<u>YTD</u>	<u>Current Month</u>	<u>Last Month</u>	<u>YTD</u>	<u>Current Month</u>	<u>Last Month</u>	<u>YTD</u>
Number of Events	456	436	3,631	1,101	1,004	7,098	558	588	4,189
Number of Incidents	23	30	266	66	55	431	19	21	229
TMC Detection (min.)	0.00	0.02	0.00	0.01	0.00	0.00	0.01	0.01	0.00
TMC Verification (min.)	3.24	3.68	3.13	4.16	4.18	3.38	5.05	4.21	4.52
TMC Response (min.)	5.22	6.24	4.56	5.46	5.39	6.03	5.61	4.60	5.29
RR Dispatch Time (min.)	1.51	1.76	1.25	1.59	1.40	2.37	1.41	1.46	1.42
RR Response Time (min.)	3.75	4.55	3.36	4.03	4.14	3.82	4.20	3.14	3.88
Event Clearance (min.)	19.97	24.98	22.16	19.44	19.47	24.09	19.06	18.61	20.93
Roadway Clearance (min.)	37.97	43.89	39.46	47.44	44.67	49.83	36.30	28.07	55.13
Incident Clearance (min.)	55.13	89.47	67.01	55.78	57.48	69.61	50.41	53.32	74.64
# of Events w/ RR/SIRV	448	422	3,478	1,087	981	5,578	548	580	3,962
RR/SIRV Responses	448	422	3,478	1,087	981	5,578	548	580	3,962
RR/SIRV Activities	496	460	3,923	1,189	1,076	6,162	606	635	4,327

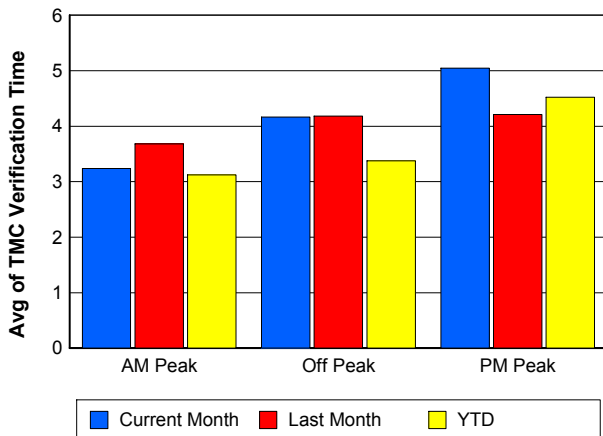
### Number of Events / Peak Period



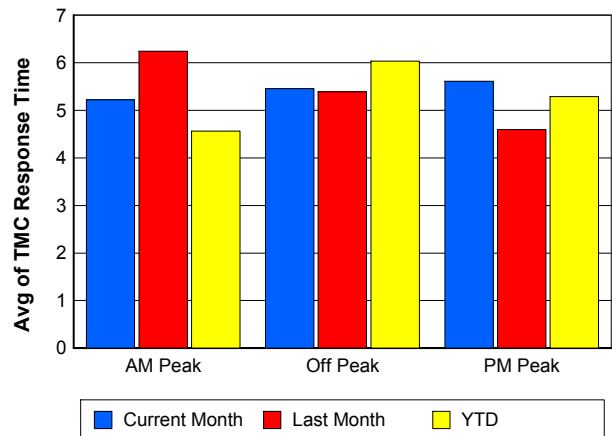
### TMC Detection Time



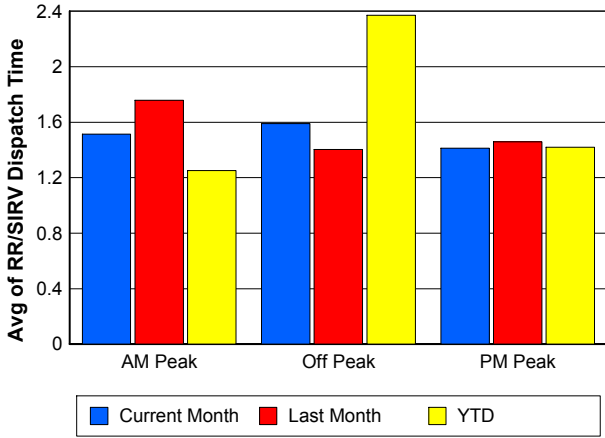
### TMC Verification Time



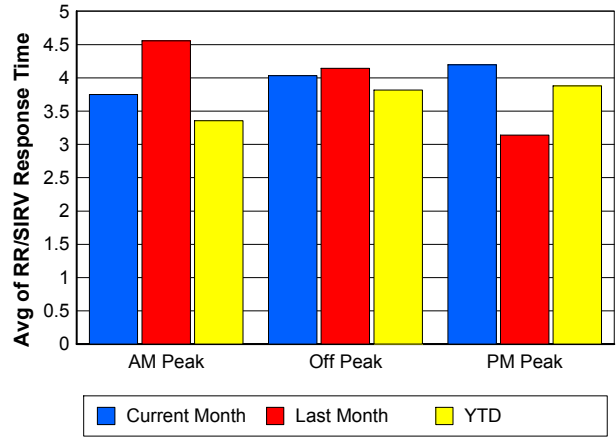
### TMC Response Time



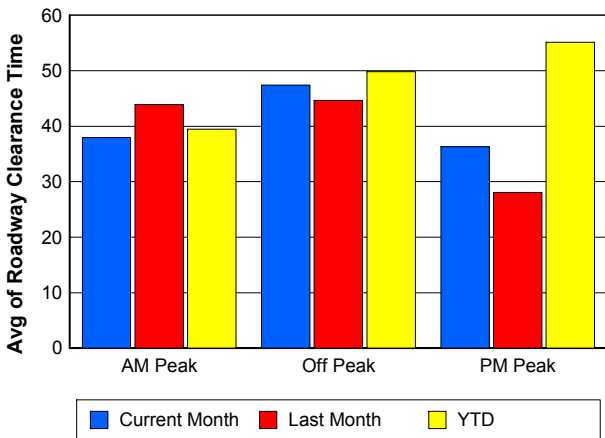
## Road Ranger / SIRV Dispatch Time



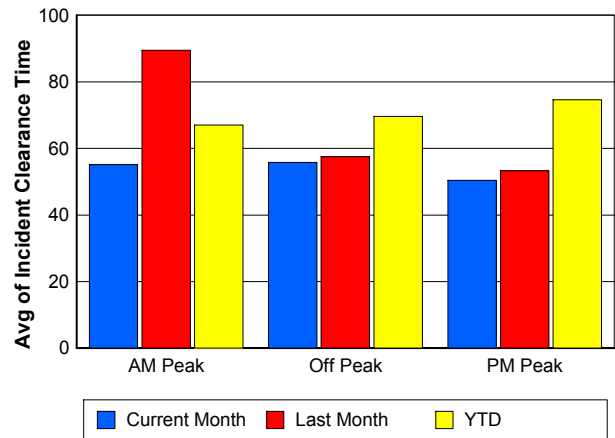
## Road Ranger / SIRV Response Time



## Roadway Clearance Time (2A)



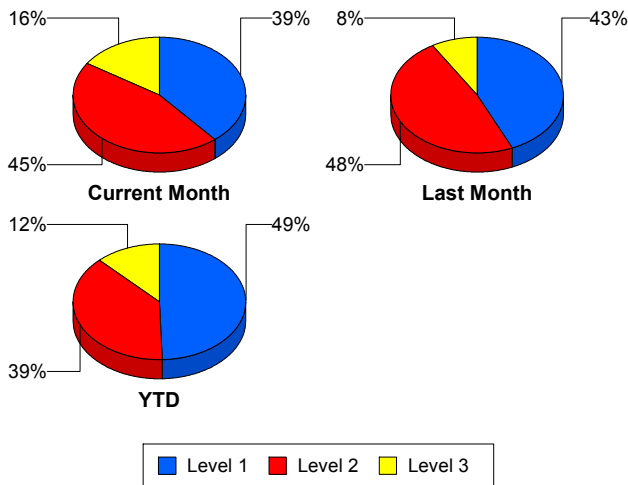
## Incident Clearance Time (3B)



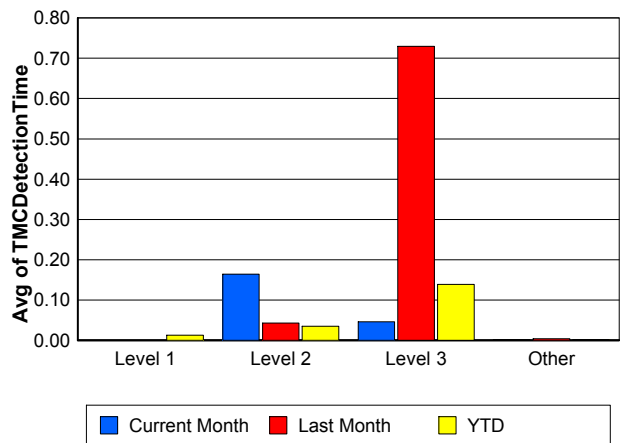
## Performance Measures by Severity

	Level 1			Level 2			Level 3			Other		
	<u>This Month</u>	<u>Last Month</u>	<u>YTD</u>	<u>This Month</u>	<u>Last Month</u>	<u>YTD</u>	<u>This Month</u>	<u>Last Month</u>	<u>YTD</u>	<u>This Month</u>	<u>Last Month</u>	<u>YTD</u>
Number of Events	42	46	457	49	51	357	17	9	112	2,007	1,922	13,992
Number of Incidents	42	46	457	49	51	357	17	9	112	0	0	0
TMC Detection (min.)	0.00	0.00	0.01	0.16	0.04	0.04	0.05	0.73	0.14	0.00	0.00	0.00
TMC Verification (min.)	2.70	2.89	2.23	7.86	7.95	5.37	2.99	8.62	4.47	4.15	3.99	3.63
TMC Response (min.)	3.63	5.84	4.27	10.26	12.36	9.66	8.97	22.97	28.05	5.34	5.04	5.21
RR Dispatch Time (min.)	1.05	1.29	1.14	1.47	3.08	2.74	4.65	10.08	20.72	1.51	1.42	1.66
RR Resp. Time (min.)	2.61	4.58	3.15	8.90	9.22	6.91	4.31	12.89	7.33	3.93	3.73	3.64
Event Clearance (min.)	32.89	53.89	41.58	63.27	68.37	71.08	83.85	111.05	183.39	17.56	17.91	19.60
Roadway Clear. (min.)	15.07	14.41	14.69	49.74	54.35	53.29	95.53	103.09	168.41			
Incident Clearance (min.)	32.89	53.89	41.58	63.27	68.37	71.08	83.85	111.05	183.39			
# of Events w/ RR/SIRV	39	44	389	48	51	277	16	9	75	1,980	1,879	12,277
RR/SIRV Responses	39	44	389	48	51	277	16	9	75	1,980	1,879	12,277
RR/SIRV Activities	52	54	499	69	75	445	23	16	124	2,147	2,026	13,344

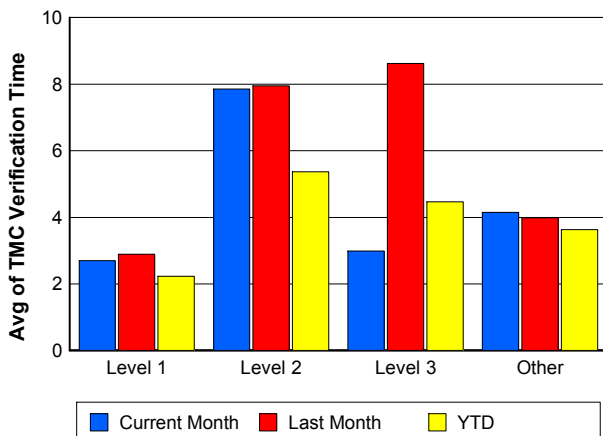
### Number of Events / Severity



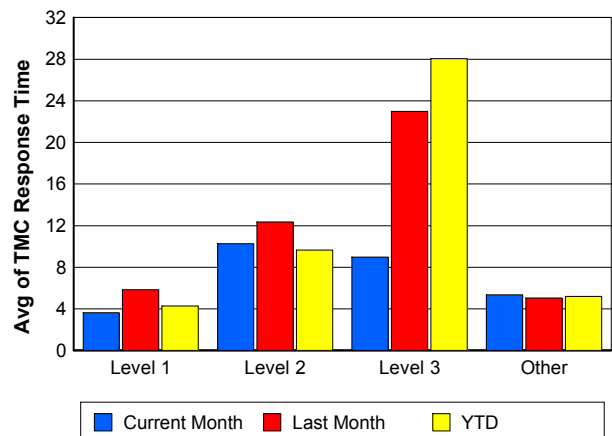
### TMC Detection Time



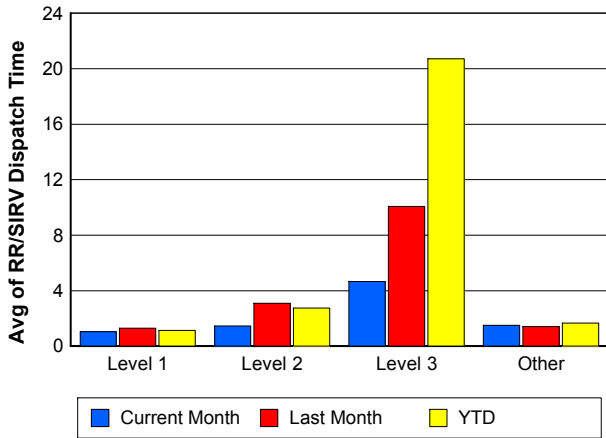
### TMC Verification Time



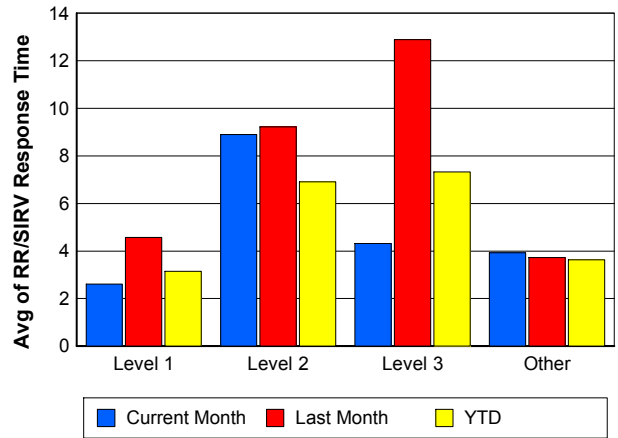
### TMC Response Time



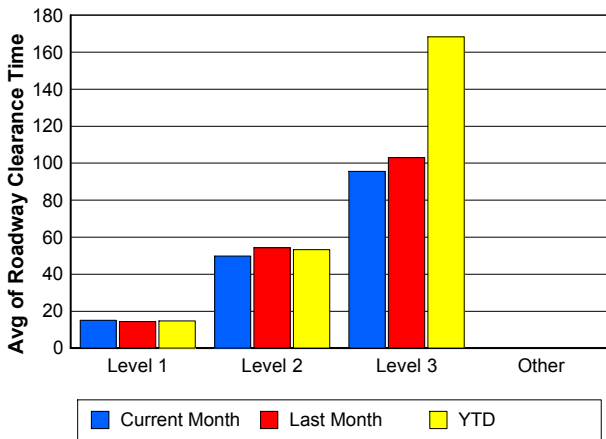
## Road Ranger / SIRV Dispatch Time



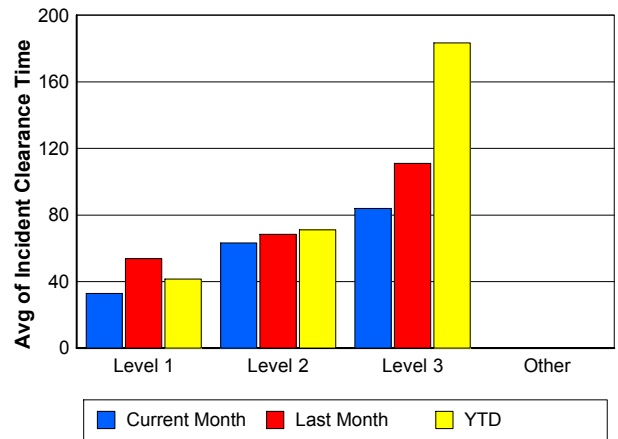
## Road Ranger / SIRV Response Time



## Roadway Clearance Time (2A)



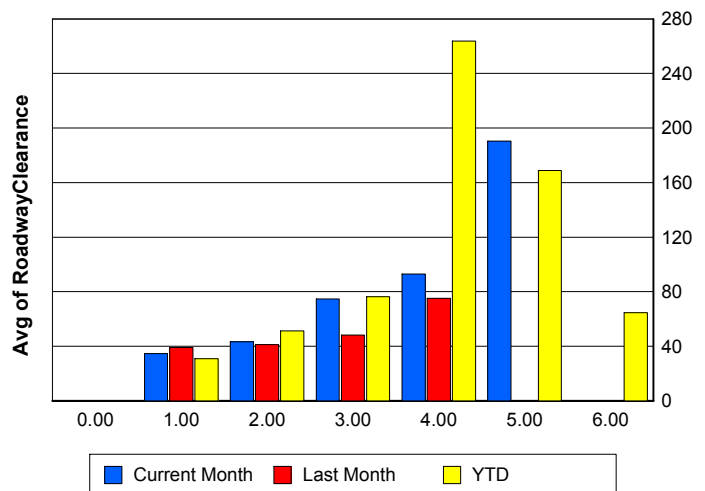
## Incident Clearance Time (3B)



## Roadway Clearance by Maximum Number of Lanes Blocked

	Current Month	Last Month	YTD
0			
1	34.61	38.97	30.86
2	43.24	41.09	51.26
3	74.57	48.18	76.40
4	92.86	75.04	263.87
5	190.35	0.00	168.97
6	0.00	0.00	64.70

## Roadway Clearance Time (2A)



## Performance Measures by Roadway

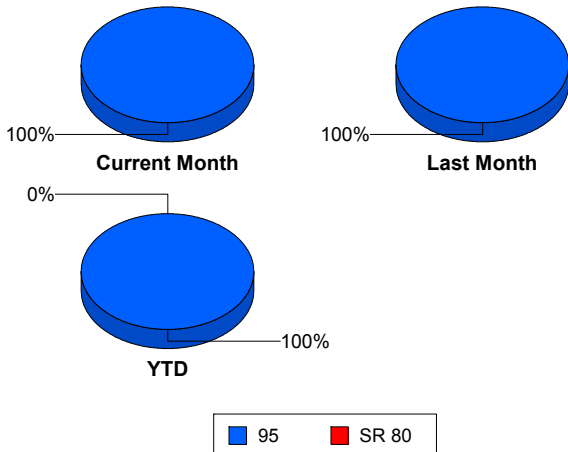
95

	<u>Current Month</u>	<u>Last Month</u>	<u>YTD</u>
Number of Events	2,115	2,028	14,914
Number of Incidents	108	106	923
TMC Detection (min.)	0.01	0.01	0.00
TMC Verification (min.)	4.20	4.08	3.64
TMC Response (min.)	5.45	5.33	5.41
RR Dispatch Time (min.)	1.53	1.49	1.78
RR Resp. Time (min.)	4.02	3.93	3.71
Event Clearance (min.)	19.45	20.41	22.36
Roadway Clear. (min.)	43.46	41.16	42.50
Incident Clearance (min.)	54.70	65.71	64.33
# of Events w/ RR/SIRV	2,083	1,983	13,018
RR/SIRV Responses	2,083	1,983	13,018
RR/SIRV Activities	2,291	2,171	14,412

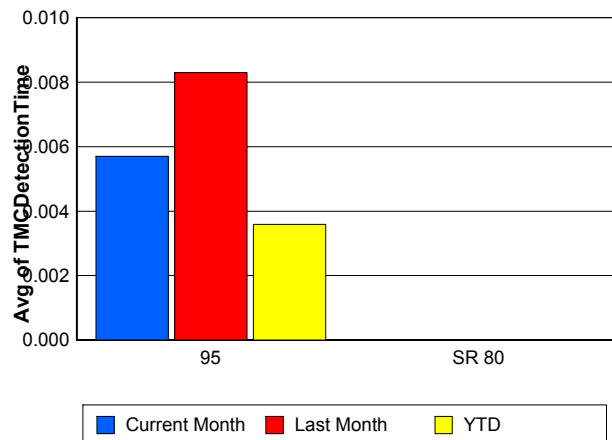
SR 80

	<u>YTD</u>
Number of Events	4
Number of Incidents	3
TMC Detection (min.)	0.00
TMC Verification (min.)	0.00
TMC Response (min.)	
RR Dispatch Time (min.)	
RR Resp. Time (min.)	
Event Clearance (min.)	1,409.98
Roadway Clear. (min.)	1,789.50
Incident Clearance (min.)	1,847.09
# of Events w/ RR/SIRV	0
RR/SIRV Responses	0
RR/SIRV Activities	0

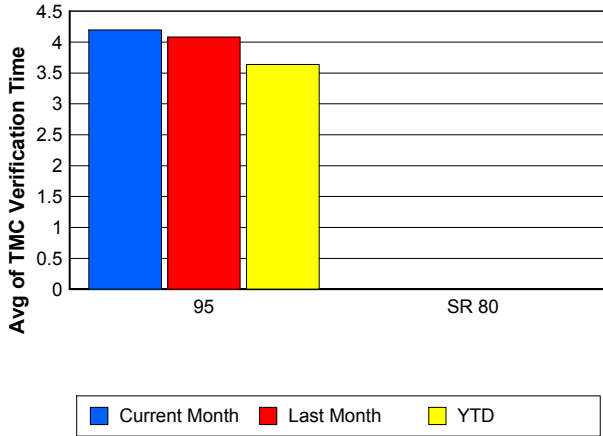
### Number of Events / Roadway



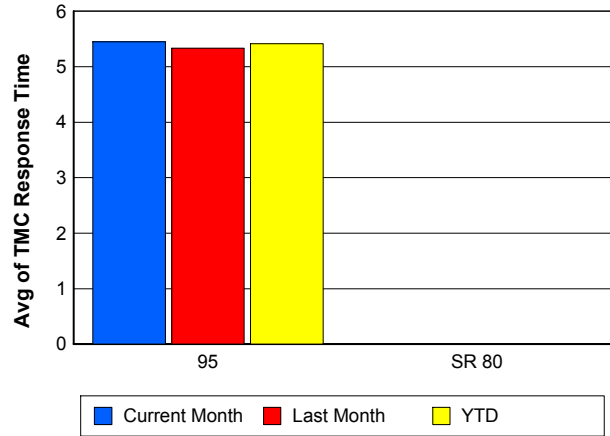
### TMC Detection Time



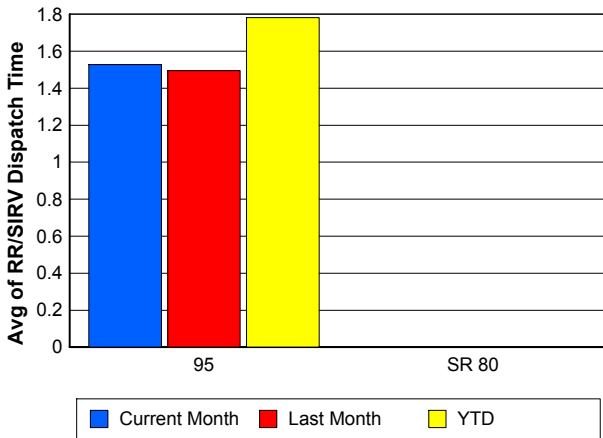
### TMC Verification Time



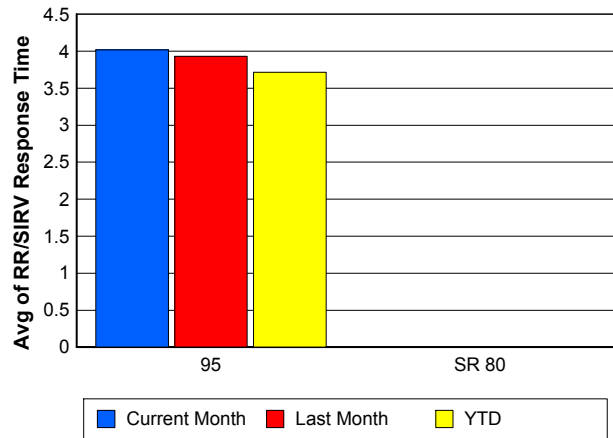
### TMC Response Time



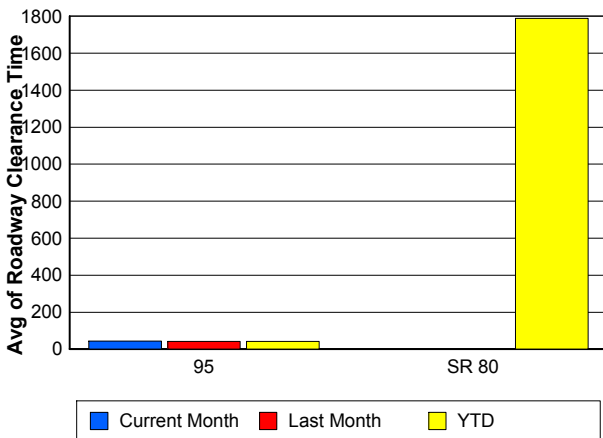
### Road Ranger / SIRV Dispatch Time



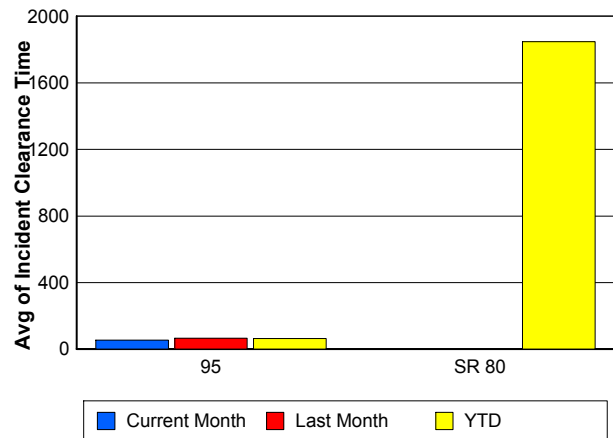
### Road Ranger / SIRV Response Time



### Roadway Clearance Time (2A)



### Incident Clearance Time (3B)



## Performance Measures by Event Type

### Accident

	<u>Current Month</u>	<u>Last Month</u>	<u>YTD</u>
Number of Events	132	171	1,260
Number of Incidents	61	62	598
TMC Detection (min.)	0.02	0.06	0.02
TMC Verification (min.)	6.21	7.72	4.61
TMC Response (min.)	7.73	9.35	8.19
RR Dispatch Time (min.)	1.47	1.76	2.64
RR Response Time (min.)	6.26	7.56	5.54
Event Clearance (min.)	57.32	55.69	58.71
Roadway Clearance (min.)	46.70	42.01	45.46
Incident Clearance (min.)	69.01	75.23	73.11
# of Events w/ RR/SIRV	132	168	1,033
RR/SIRV Assists	132	168	1,033
RR/SIRV Activities	180	200	1,317

### Debris on Roadway

	<u>Current Month</u>	<u>Last Month</u>	<u>YTD</u>
Number of Events	145	123	1,071
Number of Incidents	3	2	36
TMC Detection (min.)	0.00	0.00	0.00
TMC Verification (min.)	8.28	7.11	7.68
TMC Response (min.)	8.35	7.15	7.92
RR Dispatch Time (min.)	2.05	2.65	1.86
RR Response Time (min.)	6.29	4.52	6.07
Event Clearance (min.)	12.21	12.87	12.08
Roadway Clearance (min.)	19.06	15.92	20.62
Incident Clearance (min.)	20.17	30.52	23.77
# of Events w/ RR/SIRV	144	121	1,054
RR/SIRV Assists	144	121	1,054
RR/SIRV Activities	152	127	1,128

### Disabled Vehicle

	<u>Current Month</u>	<u>Last Month</u>	<u>YTD</u>
Number of Events	1,764	1,649	11,243
Number of Incidents	25	32	194
TMC Detection (min.)	0.00	0.00	0.00
TMC Verification (min.)	3.83	3.61	3.44
TMC Response (min.)	4.97	4.72	4.61
RR Dispatch Time (min.)	1.46	1.29	1.49
RR Response Time (min.)	3.59	3.48	3.22
Event Clearance (min.)	17.05	17.33	17.90
Roadway Clearance (min.)	23.66	34.95	26.37
Incident Clearance (min.)	29.20	47.32	36.38
# of Events w/ RR/SIRV	1,744	1,630	10,495
RR/SIRV Assists	1,744	1,630	10,495
RR/SIRV Activities	1,908	1,783	11,555

## Emergency Vehicles

	<u>Current Month</u>	<u>YTD</u>
Number of Events	1	15
Number of Incidents	1	9
TMC Detection (min.)	0.00	0.00
TMC Verification (min.)	0.00	2.12
TMC Response (min.)		9.04
RR Dispatch Time (min.)		3.11
RR Response Time (min.)		5.54
Event Clearance (min.)	10.95	47.51
Roadway Clearance (min.)	5.03	41.91
Incident Clearance (min.)	10.95	47.66
# of Events w/ RR/SIRV	0	7
RR/SIRV Assists	0	7
RR/SIRV Activities	0	9

## Other

	<u>Current Month</u>	<u>Last Month</u>	<u>YTD</u>
Number of Events	40	67	859
Number of Incidents	0	0	7
TMC Detection (min.)	0.00	0.00	0.00
TMC Verification (min.)	0.41	1.01	1.24
TMC Response (min.)	10.53	3.42	15.37
RR Dispatch Time (min.)	1.96	3.24	7.69
RR Response Time (min.)	9.92	2.43	6.78
Event Clearance (min.)	14.65	8.99	35.71
Roadway Clearance (min.)			40.35
Incident Clearance (min.)			52.93
# of Events w/ RR/SIRV	33	47	288
RR/SIRV Assists	33	47	288
RR/SIRV Activities	21	40	246

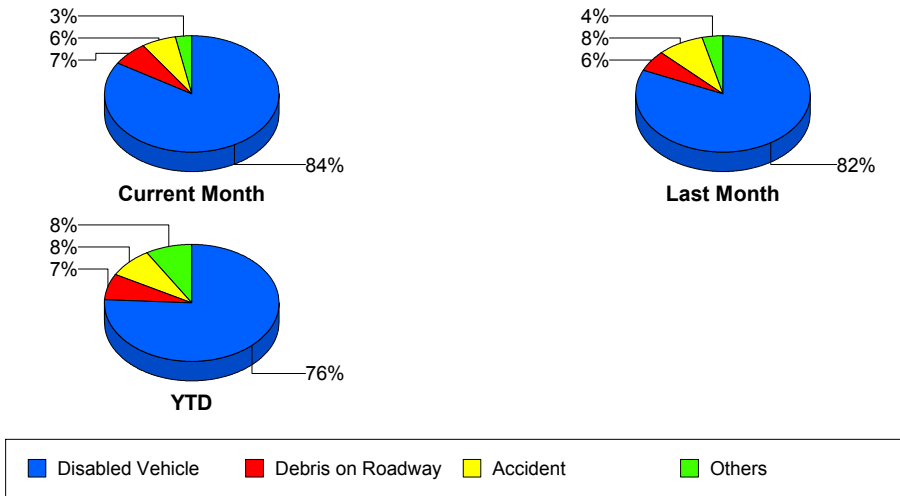
## Police Activity

	<u>Current Month</u>	<u>Last Month</u>	<u>YTD</u>
Number of Events	20	7	350
Number of Incidents	15	6	53
TMC Detection (min.)	0.44	0.94	0.08
TMC Verification (min.)	3.27	3.39	0.53
TMC Response (min.)	9.36	27.83	12.60
RR Dispatch Time (min.)	3.63	11.81	5.83
RR Response Time (min.)	5.60	16.02	6.59
Event Clearance (min.)	37.49	90.49	28.54
Roadway Clearance (min.)	63.90	76.78	70.24
Incident Clearance (min.)	43.70	92.56	86.34
# of Events w/ RR/SIRV	17	6	49
RR/SIRV Assists	17	6	49
RR/SIRV Activities	17	8	54

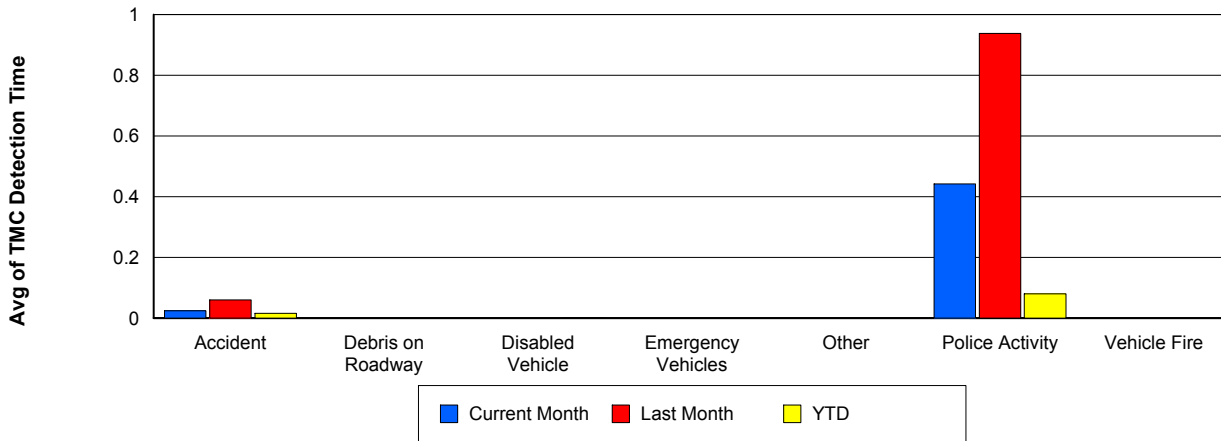
## Vehicle Fire

	<u>Current Month</u>	<u>Last Month</u>	<u>YTD</u>
Number of Events	3	5	36
Number of Incidents	3	4	28
TMC Detection (min.)	0.00	0.00	0.00
TMC Verification (min.)	1.54	7.14	3.20
TMC Response (min.)	1.52	9.47	18.83
RR Dispatch Time (min.)	0.86	2.33	13.13
RR Response Time (min.)	0.66	7.14	5.71
Event Clearance (min.)	80.22	72.54	85.56
Roadway Clearance (min.)	77.80	36.83	67.08
Incident Clearance (min.)	80.22	42.60	93.23
# of Events w/ RR/SIRV	3	5	23
RR/SIRV Assists	3	5	23
RR/SIRV Activities	4	6	33

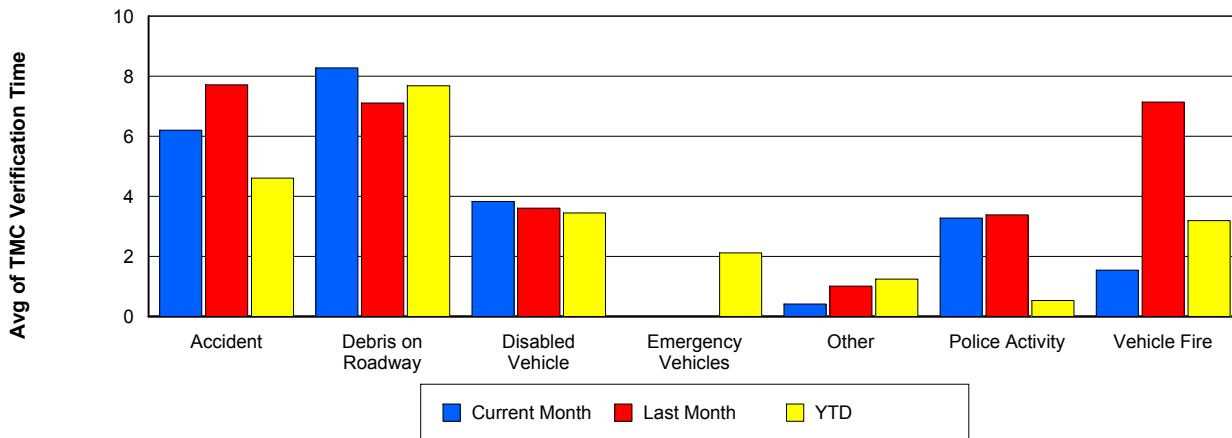
## Number of Events / Event Type



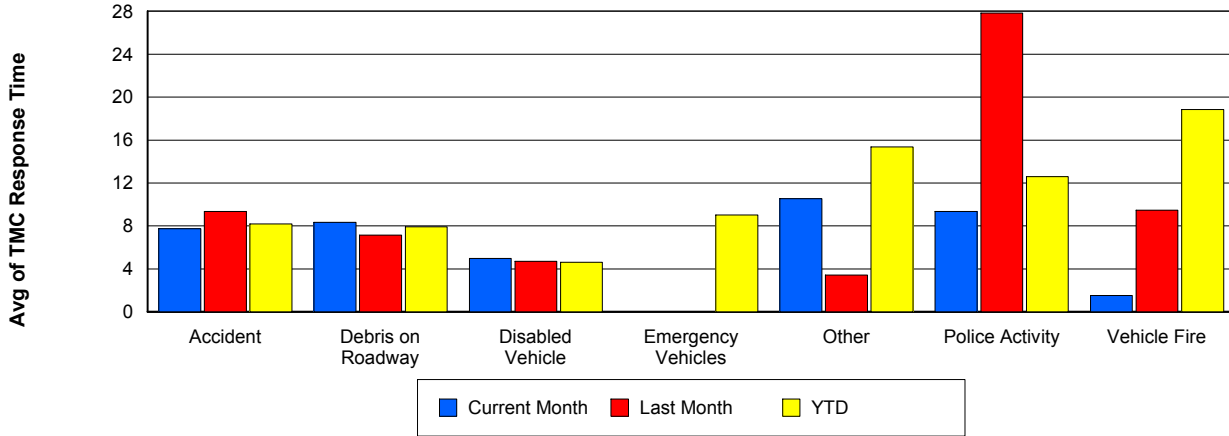
## TMC Detection Time



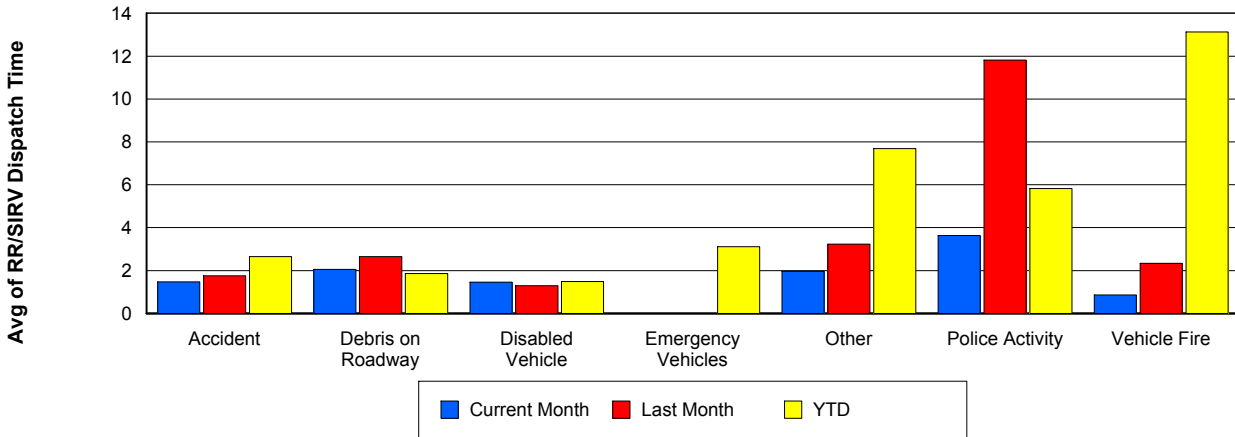
## TMC Verification Time



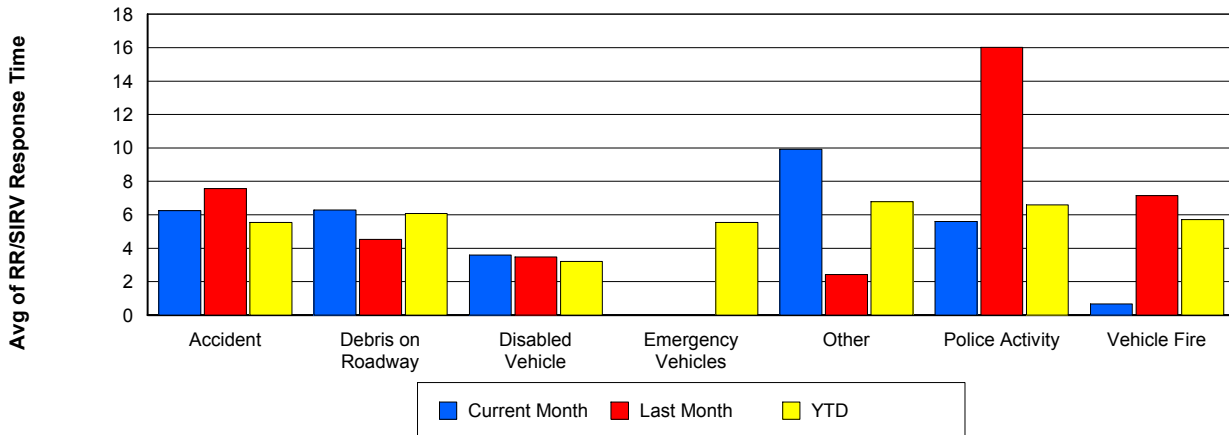
## TMC Response Time



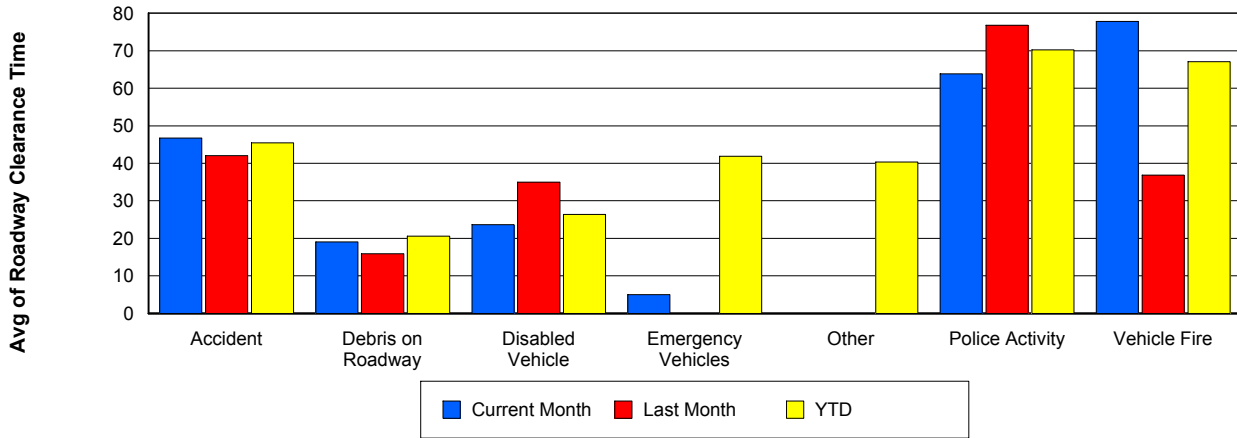
## Road Ranger / SIRV Dispatch Time



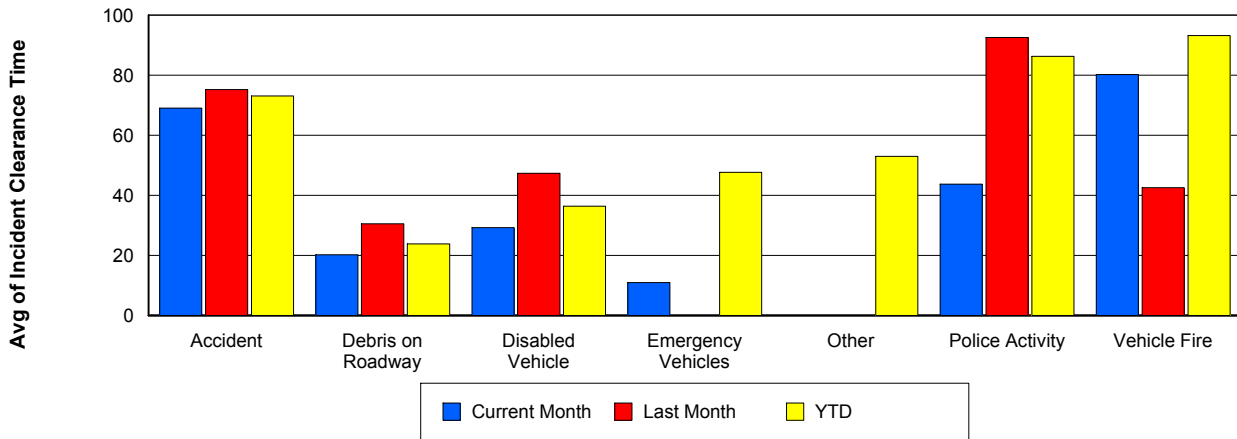
## Road Ranger / SIRV Response Time



## Roadway Clearance Time (2A)



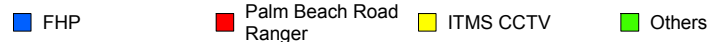
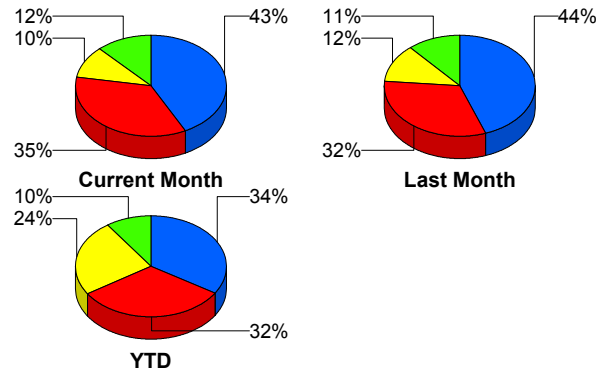
## Incident Clearance Time (3B)



## Incident Detection Methods

	Current Month	Last Month	YTD
Broward CCTV	1	0	8
Broward Road Ranger	2	0	8
Broward TMC	3	2	5
Broward VideoWall	0	0	1
Construction CEI	1	0	2
District 4	1	4	23
Emergency Operations	0	0	1
FDOT Maintenance	1	0	1
FHP	46	47	314
I-95 Construction PIO	1	0	3
ITMS	1	4	13
ITMS CCTV	11	13	226
Local Police	0	0	1
Media	0	0	2
Motorist	2	2	17
Palm Beach Road Ran	38	34	296
Road Watcher	0	0	1
SmarTraveler (511)	0	0	4
<b>Total</b>	<b>108</b>	<b>106</b>	<b>926</b>

### Total Incidents by Detection Method

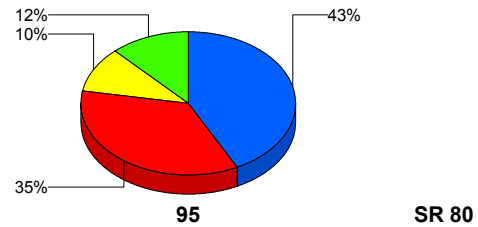


## Incident Detection Methods by Roadway

		Current Month	Last Month	YTD
95	Broward CCTV	1	0	8
	Broward Road Ranger	2	0	8
	Broward TMC	3	2	5
	Broward VideoWall	0	0	1
	Construction CEI	1	0	2
	District 4	1	4	23
	FDOT Maintenance	1	0	1
	FHP	46	47	313
	I-95 Construction PIO	1	0	3
	ITMS	1	4	12
	ITMS CCTV	11	13	226
	Local Police	0	0	1
	Media	0	0	2
	Motorist	2	2	17
	Palm Beach Road Ran	38	34	296
	Road Watcher	0	0	1
	SmarTraveler (511)	0	0	4
<b>Total</b>	<b>108</b>	<b>106</b>	<b>923</b>	
SR 80	Emergency Operations	0	0	1
	FHP	0	0	1
	ITMS	0	0	1
	<b>Total</b>	<b>0</b>	<b>0</b>	<b>3</b>
<b>Total</b>	<b>108</b>	<b>106</b>	<b>926</b>	

**Total Events by Roadway and Detection Method**

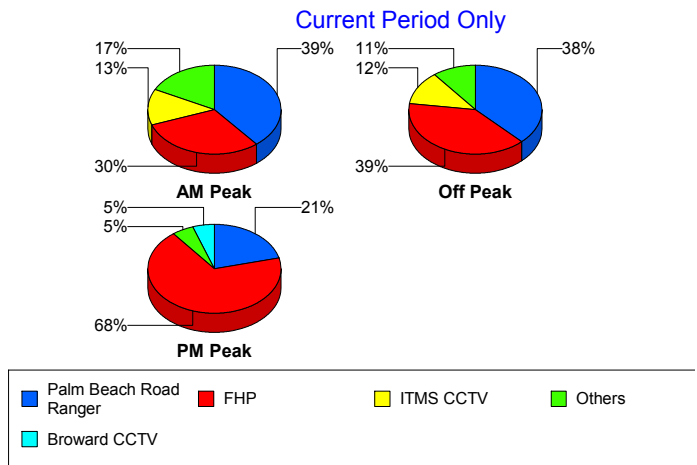
Current Period Only



## Incident Detection Methods by Peak Period

		Current Month	Last Month	YTD
AM Peak	Broward CCTV	0	0	2
	Broward Road Ranger	0	0	3
	Broward TMC	0	2	2
	Construction CEI	1	0	1
	District 4	0	2	11
	FHP	7	9	93
	I-95 Construction PIO	1	0	1
	ITMS	0	1	5
	ITMS CCTV	3	7	40
	Motorist	2	0	8
	Palm Beach Road Ran	9	9	96
	Road Watcher	0	0	1
	SmarTraveler (511)	0	0	3
	<b>Total</b>	<b>23</b>	<b>30</b>	<b>266</b>
	Off Peak	Broward CCTV	0	0
Broward Road Ranger		1	0	2
Broward TMC		3	0	3
Broward VideoWall		0	0	1
Construction CEI		0	0	1
District 4		1	2	9
FDOT Maintenance		1	0	1
FHP		26	30	157
I-95 Construction PIO		0	0	2
ITMS		1	3	7
ITMS CCTV		8	5	121
Motorist		0	1	5
Palm Beach Road Ran		25	14	117
SmarTraveler (511)		0	0	1
<b>Total</b>		<b>66</b>	<b>55</b>	<b>431</b>
PM Peak	Broward CCTV	1	0	2
	Broward Road Ranger	1	0	3

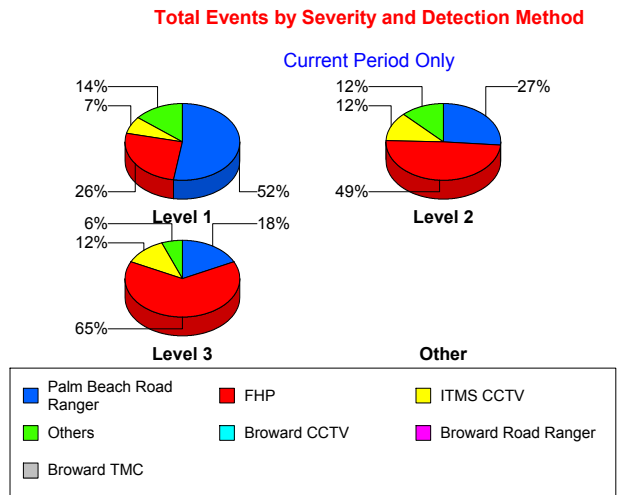
Total Events by Peak Period and Detection Method



		Current Month	Last Month	YTD
PM Peak	District 4	0	0	3
	Emergency Operations	0	0	1
	FHP	13	8	64
	ITMS	0	0	1
	ITMS CCTV	0	1	65
	Local Police	0	0	1
	Media	0	0	2
	Motorist	0	1	4
	Palm Beach Road Ran	4	11	83
	Total	19	21	229
<b>Total</b>		<b>108</b>	<b>106</b>	<b>926</b>

### Incident Detection Methods by Severity

		Current Month	Last Month	YTD
Level 1	Broward CCTV	1	0	6
	Broward Road Ranger	0	0	4
	Broward TMC	1	0	1
	District 4	1	2	16
	FHP	11	15	106
	I-95 Construction PIO	1	0	2
	ITMS	1	2	5
	ITMS CCTV	3	6	98
	Local Police	0	0	1
	Motorist	1	1	11
	Palm Beach Road Ran	22	20	205
	Road Watcher	0	0	1
	SmarTraveler (511)	0	0	1
	Total	42	46	457
Level 2	Broward Road Ranger	1	0	3
	Broward TMC	2	0	2
	Broward VideoWall	0	0	1
	Construction CEI	1	0	1



		Current Month	Last Month	YTD
Level 2	District 4	0	1	6
	FDOT Maintenance	1	0	1
	FHP	24	29	157
	I-95 Construction PIO	0	0	1
	ITMS	0	1	6
	ITMS CCTV	6	7	95
	Media	0	0	1
	Motorist	1	1	5
	Palm Beach Road Ran	13	12	75
	SmarTraveler (511)	0	0	3
	Total	49	51	357
Level 3	Broward CCTV	0	0	2
	Broward Road Ranger	1	0	1
	Broward TMC	0	2	2
	Construction CEI	0	0	1
	District 4	0	1	1
	Emergency Operations	0	0	1
	FHP	11	3	51
	ITMS	0	1	2
	ITMS CCTV	2	0	33
	Media	0	0	1
	Motorist	0	0	1
	Palm Beach Road Ran	3	2	16
	Total	17	9	112
Total		108	106	926

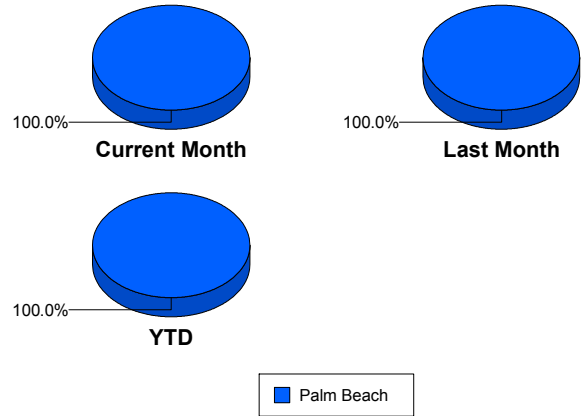
# Road Ranger / SIRV Performance Measures

## Road Ranger / SIRV Performance By County

RR/SIRV Responses per County

Values presented are:  
 - Total Events with a RR/SIRV Response  
 - Total RR/SIRV Responses,  
 - Total Activities Performed

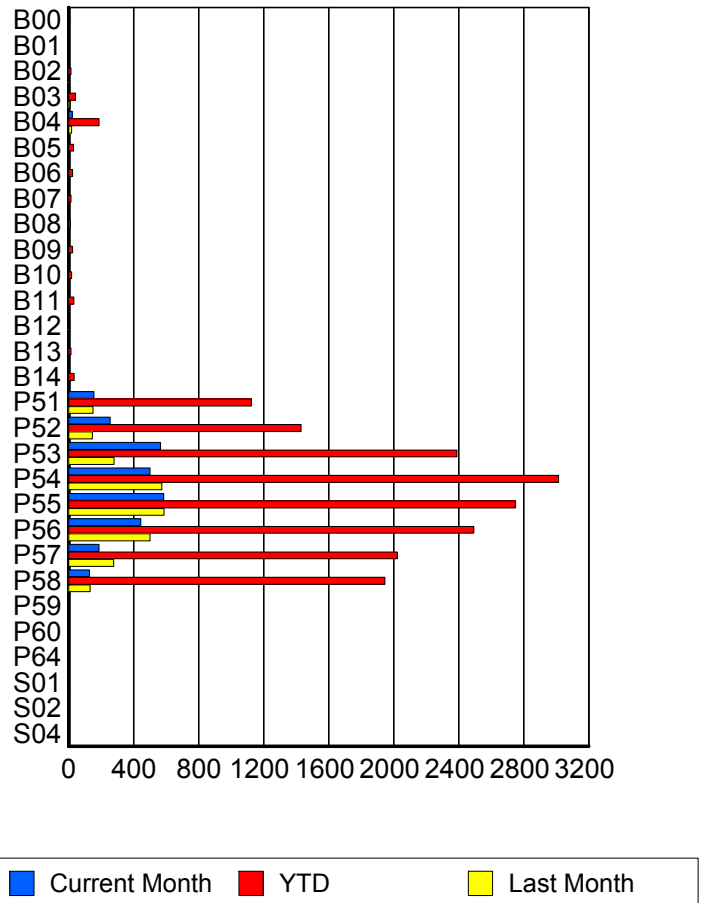
	Current Mo	Last Month	YTD
Palm Beach	2,768	2,603	17,026
	2,884	2,697	17,322
	3,063	2,882	18,850



## Road Ranger / SIRV Performance By Truck

	Current Mo	Last Month	YTD
B00	1	0	6
	1	0	6
	1	0	6
B01	0	0	1
	0	0	1
	0	0	1
B02	1	3	14
	1	3	14
	1	4	15
B03	7	9	43
	7	9	43
	7	9	44
B04	22	19	187
	22	19	188
	23	19	212
B05	2	7	29
	2	7	30
	2	7	31
B06	6	1	24
	7	1	25
	9	1	27
B07	0	1	14
	0	1	14
	0	1	14
B08	3	1	11
	3	1	11
	5	1	14

RR/SIRV Responses per Truck



	Current Mo	Last Month	YTD
B09	4	5	24
	4	6	25
	5	6	26
B10	2	6	18
	2	6	19
	2	6	19
B11	6	4	33
	6	4	33
	6	4	34
B12	0	2	6
	0	2	6
	0	3	7
B13	0	0	14
	0	0	14
	0	0	15
B14	3	5	34
	3	6	35
	3	7	37
P51	155	148	1,113
	156	149	1,124
	162	155	1,176
P52	253	145	1,424
	255	146	1,430
	276	157	1,536
P53	554	276	2,358
	566	279	2,390
	597	297	2,532
P54	490	566	2,985
	500	573	3,014
	536	605	3,236
P55	578	581	2,730
	586	588	2,750
	625	621	2,945
P56	438	495	2,464
	445	501	2,492
	470	538	2,681
P57	185	275	2,003
	187	277	2,023
	192	292	2,157
P58	126	129	1,917
	129	132	1,946
	138	145	2,073
P59	1	0	1
	1	0	1
	2	0	2

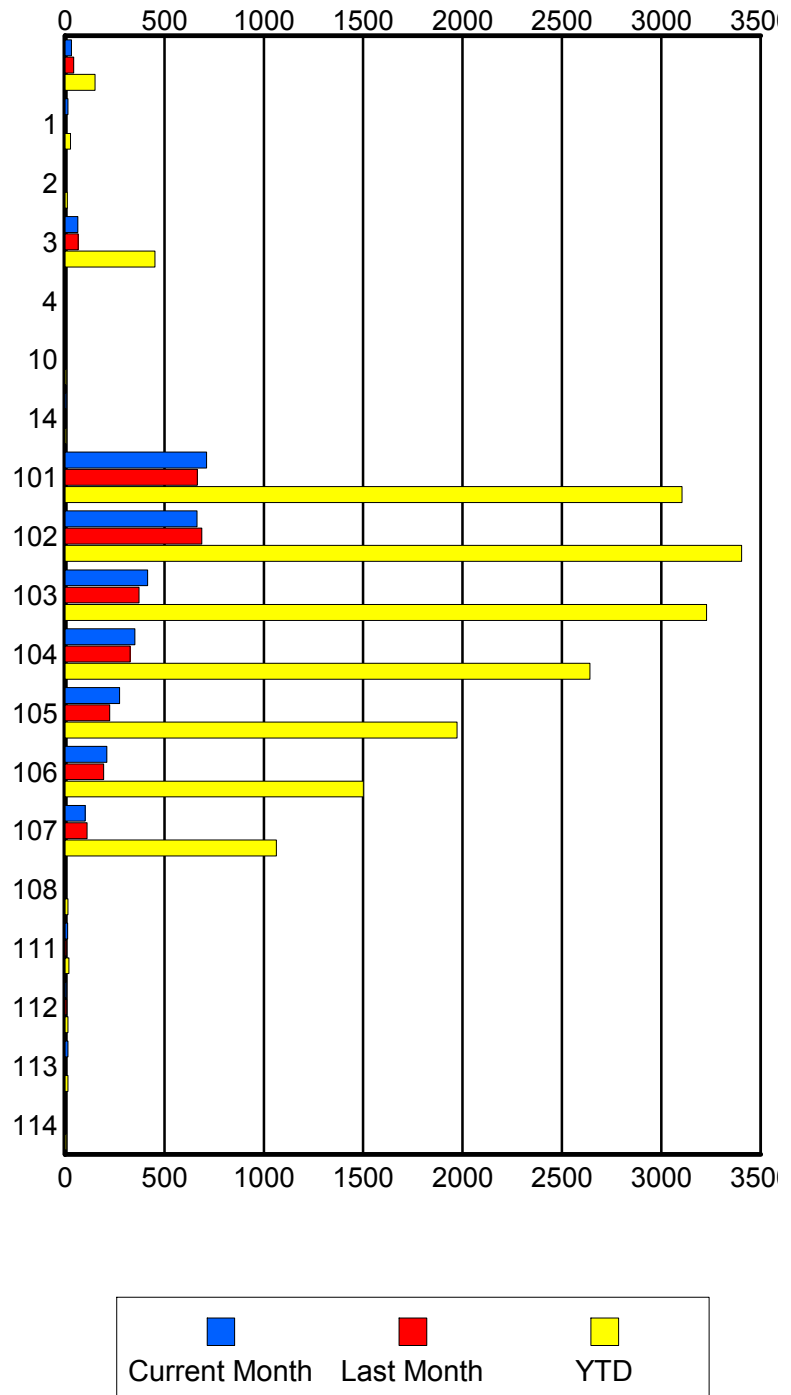
	Current Mo	Last Month	YTD
P60	0	1	1
	0	1	1
	0	1	1
P64	0	1	1
	0	1	1
	0	1	1
S01	0	2	3
	0	2	3
	0	2	3
S02	1	0	3
	1	0	3
	1	0	3
S04	0	0	2
	0	0	2
	0	0	2

### Road Ranger / SIRV Performance By Beat

	Current Mo	Last Month	YTD
	31	44	150
	32	44	151
	33	48	156
1	13	2	26
	14	2	27
	14	2	28
2	3	2	11
	3	2	11
	4	2	13
3	60	63	440
	64	66	453
	71	69	490
4	0	0	2
	0	0	2
	0	0	2
10	0	0	6
	0	0	6
	0	0	9
14	7	0	7
	7	0	7
	7	0	7
101	697	661	3,073
	712	666	3,105
	755	713	3,336
102	654	677	3,371
	664	688	3,404
	701	720	3,618
103	408	370	3,191
	415	373	3,228
	445	403	3,476
104	345	323	2,611
	352	328	2,641
	378	349	2,829
105	272	224	1,956
	275	225	1,972
	291	235	2,096
106	209	189	1,483
	210	195	1,501
	222	206	1,604
107	100	109	1,050
	102	111	1,063
	108	119	1,116
108	0	0	13
	0	0	14
	0	0	14

Values presented are:  
 - Total Events with a RR/SIRV Response  
 - Total RR/SIRV Responses,  
 - Total Activities Performed

### RR/SIRV Responses per Beat



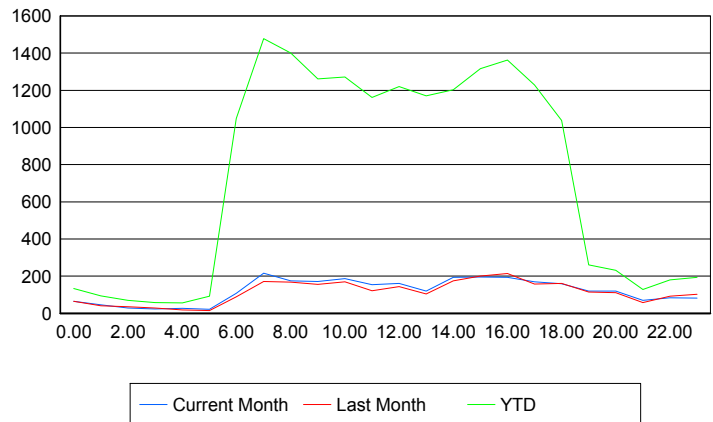
	Current Mo	Last Month	YTD
111	12	6	18
	13	6	19
	13	7	20
112	7	7	14
	7	8	15
	7	9	16
113	13	0	13
	14	0	14
	14	0	14
114	0	0	6
	0	0	6
	0	0	6

### Road Ranger / SIRV Performance By Time of Day

Values presented are:  
- Total Events with a RR/SIRV Response  
- Total RR/SIRV Responses,  
- Total Activities Performed

	Current Mo	Last Month	YTD
12AM-1AM	62	62	129
	65	64	134
	74	66	145
1AM-2AM	44	40	90
	45	41	94
	50	43	101
2AM-3AM	28	34	68
	29	35	70
	29	38	74
3AM-4AM	24	26	54
	24	29	57
	24	30	58
4AM-5AM	24	18	51
	26	18	56
	31	18	62
5AM-6AM	19	13	85
	21	14	92
	21	15	96
6AM-7AM	103	82	1,002
	108	88	1,048
	113	91	1,103
7AM-8AM	202	161	1,406
	216	172	1,478
	233	185	1,586
8AM-9AM	166	158	1,341
	175	167	1,401
	183	175	1,495

### Number of Responses / Hour of the Day



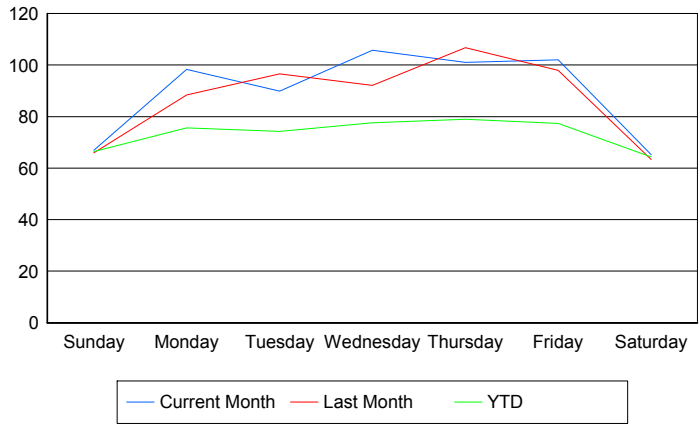
	Current Mo	Last Month	YTD
9AM-10AM	168	151	1,221
	172	156	1,262
	181	165	1,370
10AM-11AM	179	165	1,226
	186	169	1,271
	199	177	1,344
11AM-12PM	148	121	1,129
	154	122	1,162
	160	133	1,260
12PM-1PM	154	136	1,172
	161	144	1,220
	170	153	1,306
1PM-2PM	116	99	1,133
	120	105	1,171
	125	113	1,259
2PM-3PM	182	168	1,154
	193	175	1,203
	208	183	1,278
3PM-4PM	188	194	1,272
	196	201	1,317
	209	211	1,405
4PM-5PM	188	206	1,325
	193	215	1,363
	203	231	1,449
5PM-6PM	163	153	1,192
	169	157	1,228
	184	168	1,303
6PM-7PM	156	158	1,024
	159	161	1,038
	166	170	1,095
7PM-8PM	116	111	253
	119	115	260
	127	122	277
8PM-9PM	115	105	222
	119	111	232
	125	116	243
9PM-10PM	64	55	120
	69	58	129
	74	62	138
10PM-11PM	80	85	168
	84	92	179
	89	102	194
11PM-12AM	79	102	189
	81	103	193
	85	115	209

**Road Ranger / SIRV Performance By Day of Week**

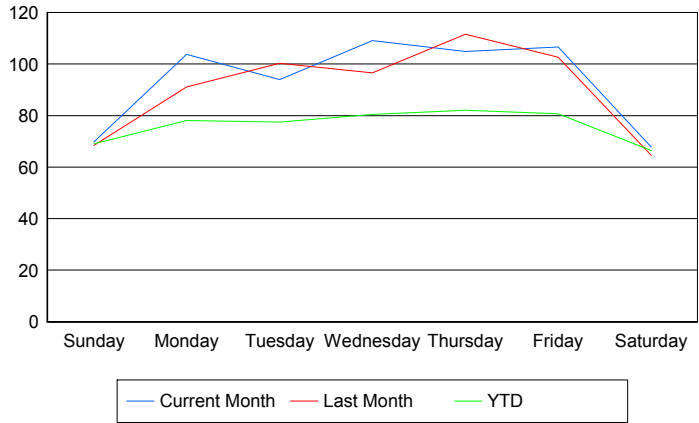
Values presented are: - Total Events with a RR/SIRV Response - Total RR/SIRV Responses, - Total Activities Performed
---

	Current Mo	Last Month	YTD
Sunday	266	263	529
	277	273	550
	299	293	592
Monday	388	345	3,114
	407	355	3,188
	433	382	3,403
Tuesday	356	476	3,066
	372	495	3,174
	401	521	3,399
Wednesday	423	458	3,217
	436	480	3,332
	463	509	3,565
Thursday	503	425	3,282
	522	441	3,372
	555	476	3,655
Friday	509	390	3,256
	532	409	3,384
	556	428	3,607
Saturday	325	253	578
	338	258	596
	356	273	629

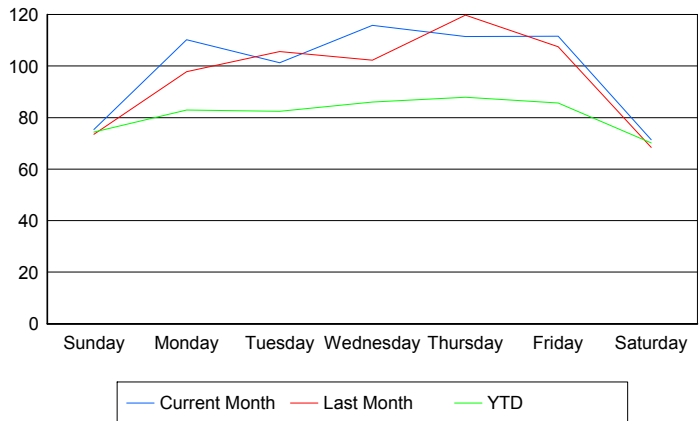
**Avg # of events with a RR/SIRV Response per Day of the Week**



**Avg # of RR/SIRV Responses per Day of the Week**



**Avg # of RR/SIRV Activities Performed per Day of the Week**



### Road Ranger / SIRV Responses per Time of Day and Day of Week

