



Monthly Performance Measures Report Palm Beach County



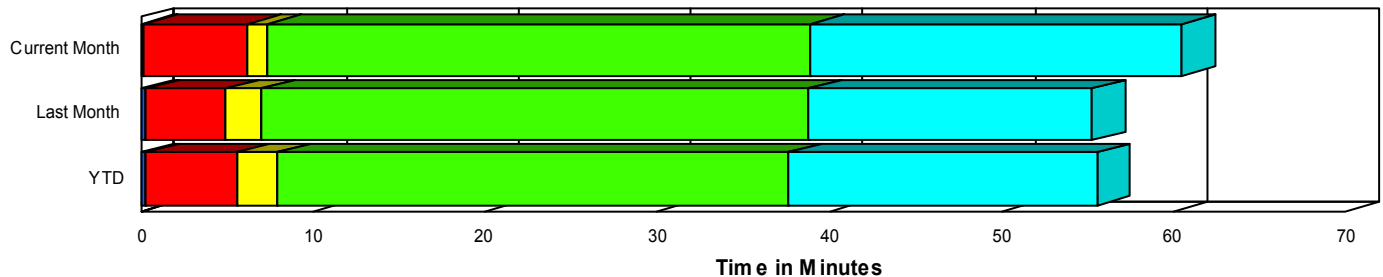
Created on:
January 07, 2008
9:17 am

Period From Dec 1, 2007 to Dec 31, 2007

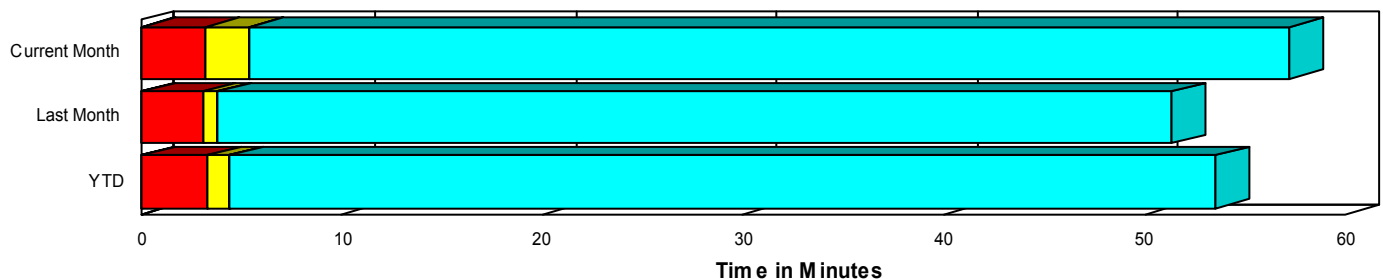
Performance Measures Summary

	Traffic Events (No Lanes Blocked)			Incidents (Lanes Blocked)		
	<u>This Month</u>	<u>Last Month</u>	<u>YTD</u>	<u>This Month</u>	<u>Last Month</u>	<u>YTD</u>
Number of Events	2,637	2,569	31,879	162	186	2,243
TMC Detection (min.)	0.05	0.06	0.08	0.21	0.26	0.26
TMC Verification (min.)	3.14	3.03	3.22	6.02	4.69	5.30
TMC Response (min.)	5.37	3.83	4.46	7.20	6.80	7.77
RR Dispatch Time (min.)	2.59	1.09	1.49	1.14	1.00	1.33
RR Response Time (min.)	2.80	2.76	2.98	6.17	5.80	6.46
Roadway Clearance (min.)				39.71	38.77	37.79
Event Clearance (min.)	57.25	51.37	53.59	60.45	55.20	54.52
# of Events w/ RR/SIRV	2,497	2,431	30,366	160	184	2,198
RR/SIRV Responses	2,569	2,489	31,345	229	250	2,833
RR/SIRV Activities	2,666	2,636	33,204	250	269	3,232

Incident Clearance TimeLine



Traffic Event(Non-Lane Blockage) Time-Line



■ Avg. TMC Detection Time	■ Avg. Time from TMC Response to Roadway Clearance*
■ Avg. Time from TMC Detection to TMC Verification	■ Avg. Time from Roadway Clearance to Incident/Event Clearance**
■ Avg. Time from TMC Verification to TMC Response	

* Roadway clearance equals all travel lanes open

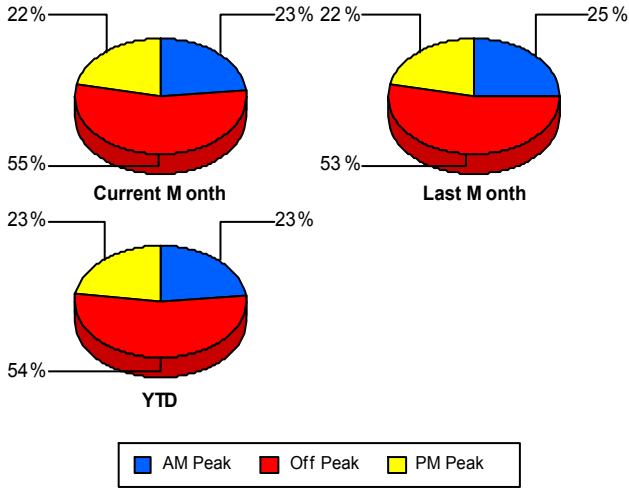
** Incident clearance equals time when last responder has left the scene

Performance Measures by Peak Period

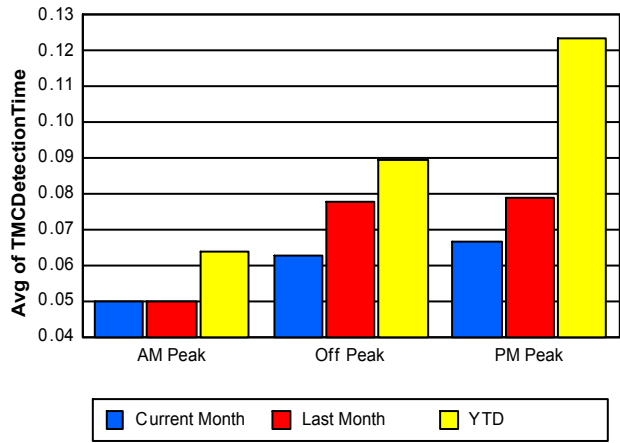
Note: AM peak period is defined as 6am to 10am and PM peak period is defined as 3pm to 7pm.

	AM Peak			Off Peak			PM Peak		
	<u>Current Month</u>	<u>Last Month</u>	<u>YTD</u>	<u>Current Month</u>	<u>Last Month</u>	<u>YTD</u>	<u>Current Month</u>	<u>Last Month</u>	<u>YTD</u>
Number of Events	650	688	7,998	1,537	1,468	18,353	612	599	7,771
Number of Incidents	35	43	562	101	102	1,161	26	41	520
TMC Detection (min.)	0.05	0.05	0.06	0.06	0.08	0.09	0.07	0.08	0.12
TMC Verification (min.)	3.19	2.55	2.62	3.40	3.22	3.53	3.19	3.66	3.72
TMC Response (min.)	3.38	3.39	3.37	7.24	4.33	4.90	3.36	4.09	5.53
RR Dispatch Time (min.)	0.80	0.79	0.73	4.08	1.49	1.55	0.40	0.43	2.08
RR Response Time (min.)	2.59	2.61	2.64	3.19	2.86	3.35	2.97	3.66	3.47
Event Clearance (min.)	44.13	41.34	44.80	68.81	60.97	62.94	43.00	40.55	40.82
Roadway Clearance (min.)	34.65	34.58	33.65	44.45	42.49	42.14	28.12	33.93	32.55
Incident Clearance (min.)	55.44	54.25	50.54	63.98	57.78	58.55	53.52	49.81	49.83
# of Events w/ RR/SIRV	617	661	7,704	1,451	1,377	17,371	589	577	7,489
RR/SIRV Responses	652	680	8,068	1,537	1,465	18,336	609	594	7,774
RR/SIRV Activities	681	715	8,565	1,612	1,568	19,701	623	622	8,170

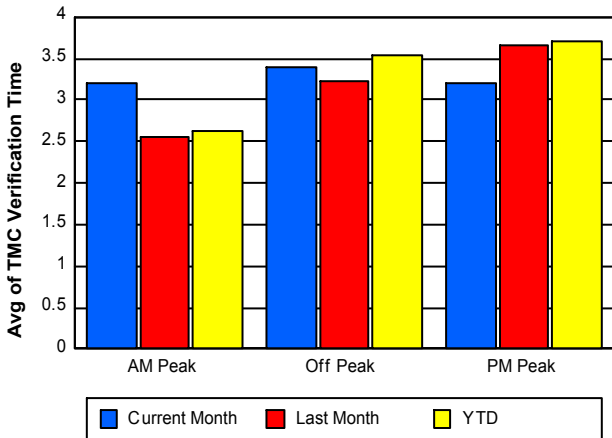
Number of Events / Peak Period



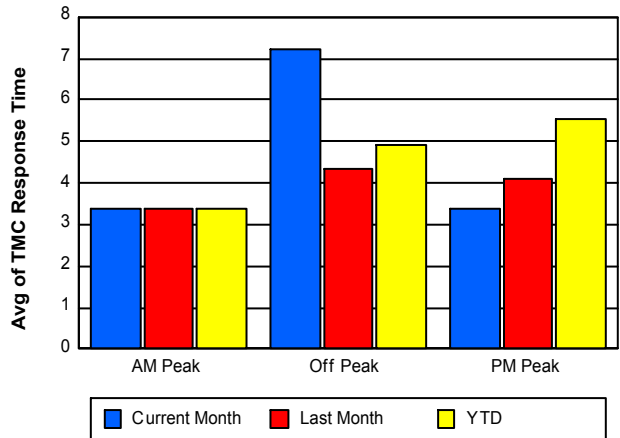
TMC Detection Time



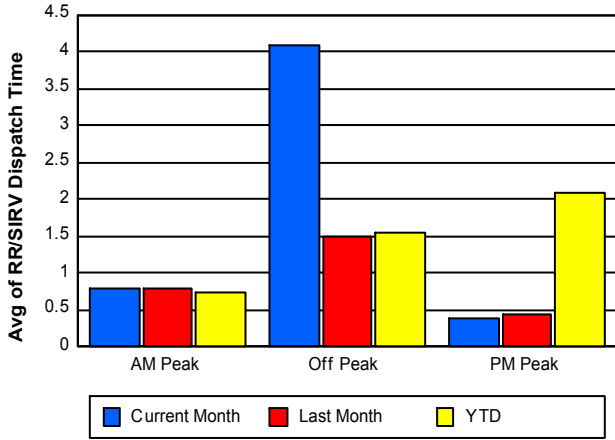
TMC Verification Time



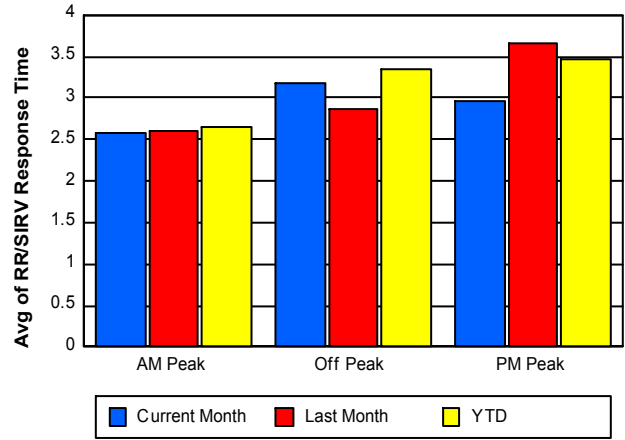
TMC Response Time



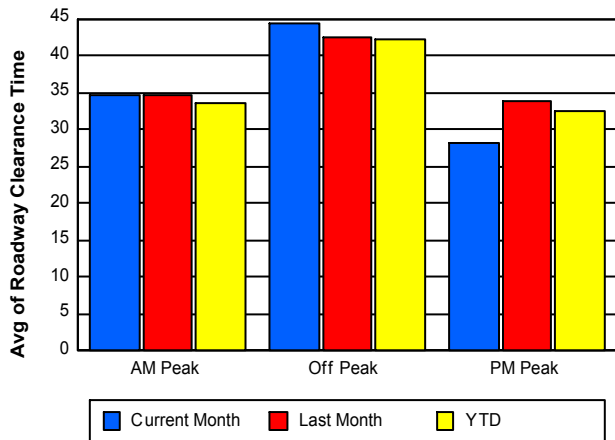
Road Ranger / SIRV Dispatch Time



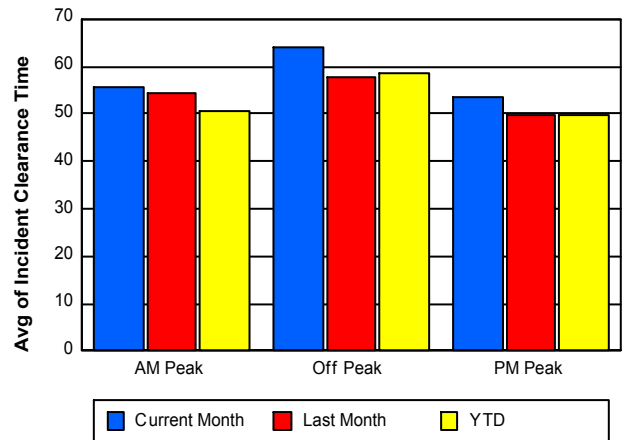
Road Ranger / SIRV Response Time



Roadway Clearance Time (2A)



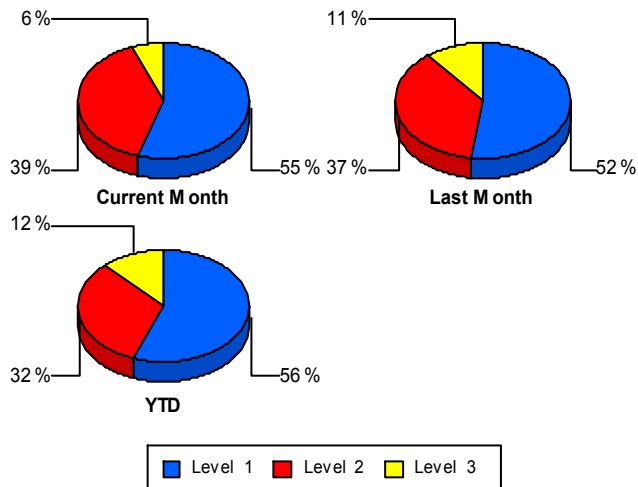
Incident Clearance Time (3B)



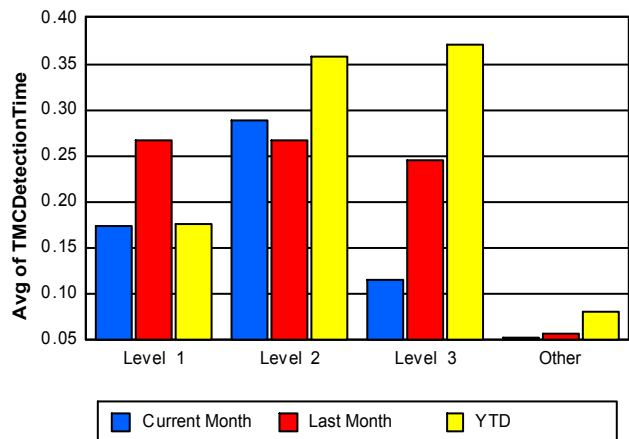
Performance Measures by Severity

	Level 1			Level 2			Level 3			Other		
	<u>This Month</u>	<u>Last Month</u>	<u>YTD</u>	<u>This Month</u>	<u>Last Month</u>	<u>YTD</u>	<u>This Month</u>	<u>Last Month</u>	<u>YTD</u>	<u>This Month</u>	<u>Last Month</u>	<u>YTD</u>
Number of Events	89	97	1,250	63	69	728	10	20	265	2,637	2,569	31,879
Number of Incidents	89	97	1,250	63	69	728	10	20	265	0	0	0
TMC Detection (min.)	0.17	0.27	0.18	0.29	0.27	0.36	0.11	0.25	0.37	0.05	0.06	0.08
TMC Verification (min.)	3.63	2.61	3.24	9.40	6.95	8.19	5.95	7.00	7.07	3.14	3.03	3.22
TMC Response (min.)	4.69	5.43	5.15	10.70	8.55	10.76	7.25	7.33	12.07	5.37	3.83	4.46
RR Dispatch Time (min.)	1.06	0.98	1.04	0.93	0.97	1.46	3.12	1.21	2.38	2.59	1.09	1.49
RR Resp. Time (min.)	3.62	4.46	4.12	9.77	7.58	9.31	5.96	6.12	9.76	2.80	2.76	2.98
Event Clearance (min.)	37.64	31.12	33.22	77.18	73.03	70.10	158.15	110.54	112.17	57.25	51.37	53.59
Roadway Clear. (min.)	14.96	14.33	13.18	56.49	54.61	56.26	154.29	102.69	103.10			
Incident Clearance (min.)	37.64	31.12	33.22	77.18	73.03	70.10	158.15	110.54	112.17			
# of Events w/ RR/SIRV	88	96	1,229	63	69	725	9	19	244	2,497	2,431	30,366
RR/SIRV Responses	110	120	1,407	96	100	1,023	23	30	403	2,569	2,489	31,345
RR/SIRV Activities	122	127	1,615	105	110	1,156	23	32	461	2,666	2,636	33,204

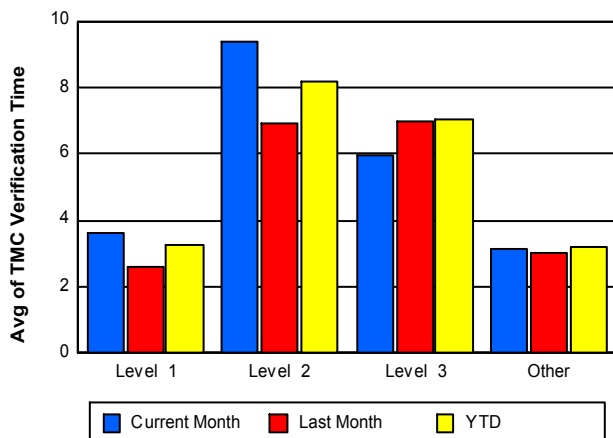
Number of Events / Severity



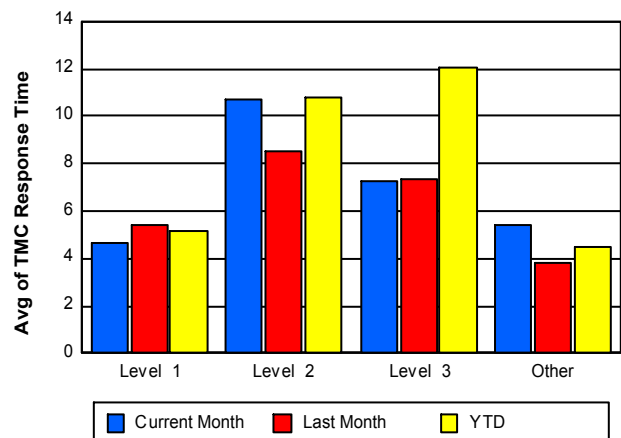
TMC Detection Time



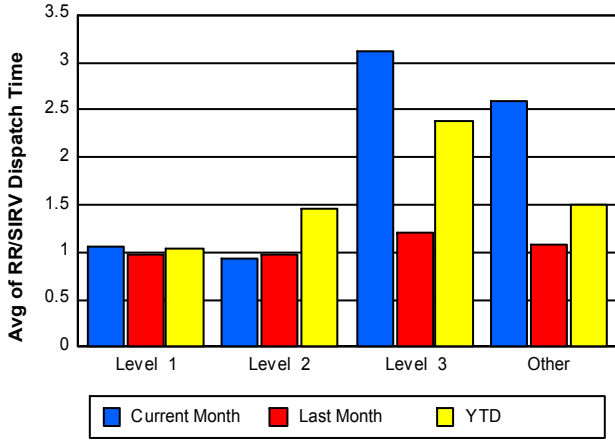
TMC Verification Time



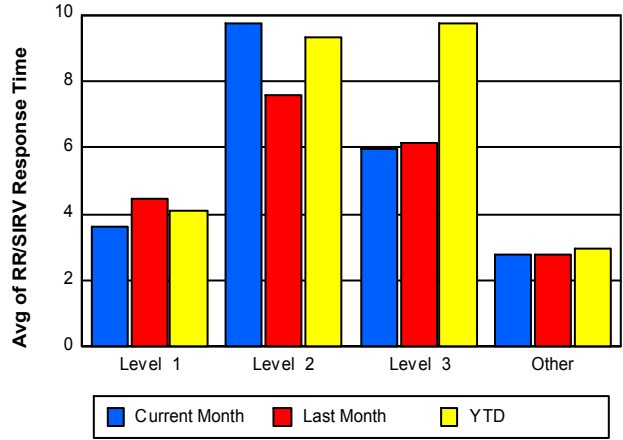
TMC Response Time



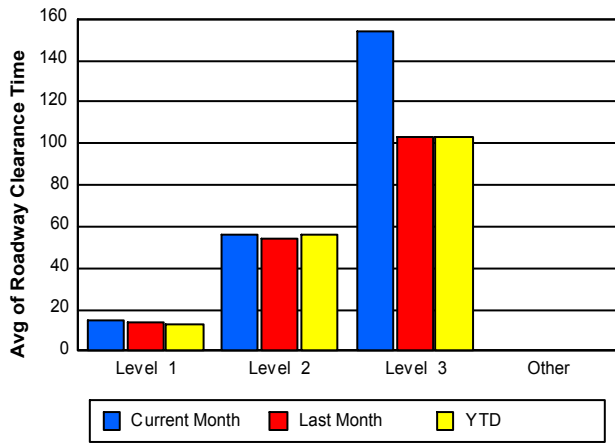
Road Ranger / SIRV Dispatch Time



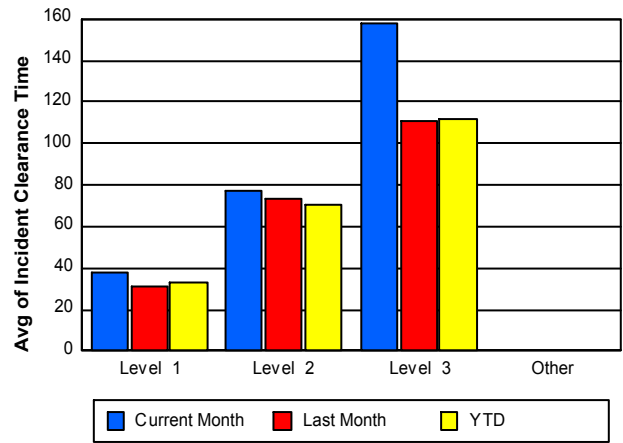
Road Ranger / SIRV Response Time



Roadway Clearance Time (2A)



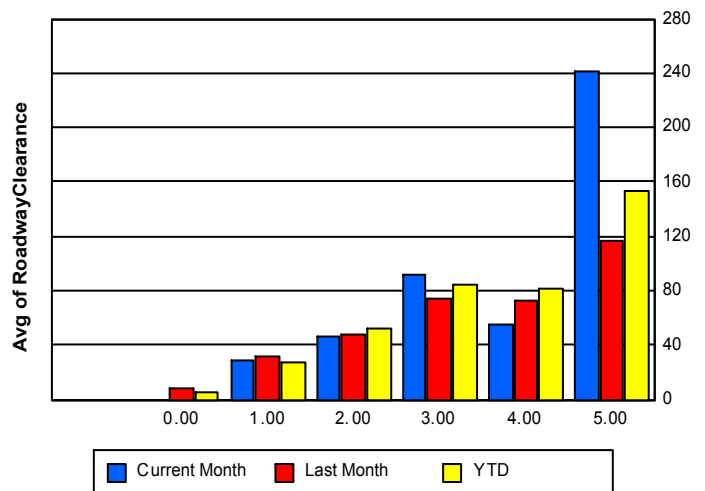
Incident Clearance Time (3B)



Roadway Clearance by Maximum Number of Lanes Blocked

	Current Month	Last Month	YTD
0		8.28	4.99
1	29.03	32.18	27.98
2	46.19	47.78	52.86
3	91.26	73.64	83.87
4	55.33	72.99	81.14
5	241.94	116.85	153.99

Roadway Clearance Time(2A)

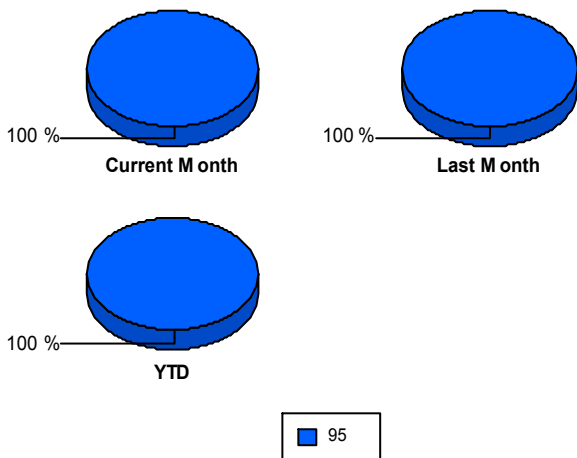


Performance Measures by Roadway

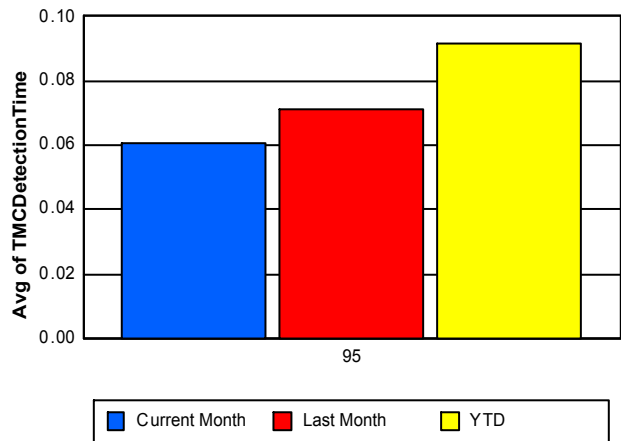
95

	<u>Current Month</u>	<u>Last Month</u>	<u>YTD</u>
Number of Events	2,799	2,755	34,122
Number of Incidents	162	186	2,243
TMC Detection (min.)	0.06	0.07	0.09
TMC Verification (min.)	3.31	3.15	3.36
TMC Response (min.)	5.48	4.04	4.68
RR Dispatch Time (min.)	2.50	1.08	1.48
RR Resp. Time (min.)	3.00	2.98	3.21
Event Clearance (min.)	57.43	51.63	53.65
Roadway Clear. (min.)	39.71	38.77	37.79
Incident Clearance (min.)	60.45	55.20	54.52
# of Events w/ RR/SIRV	2,657	2,615	32,564
RR/SIRV Responses	2,798	2,739	34,178
RR/SIRV Activities	2,916	2,905	36,436

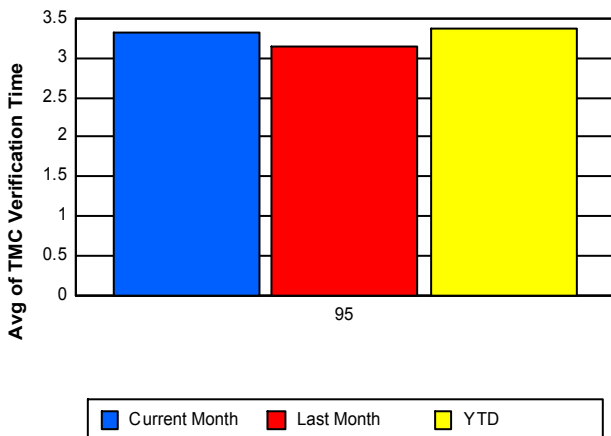
Number of Events / Roadway



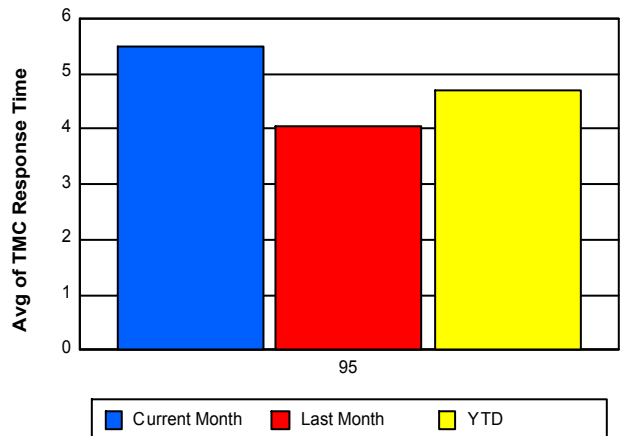
TMC Detection Time



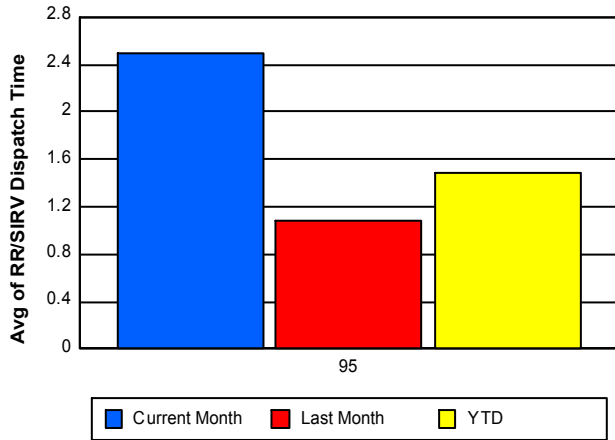
TMC Verification Time



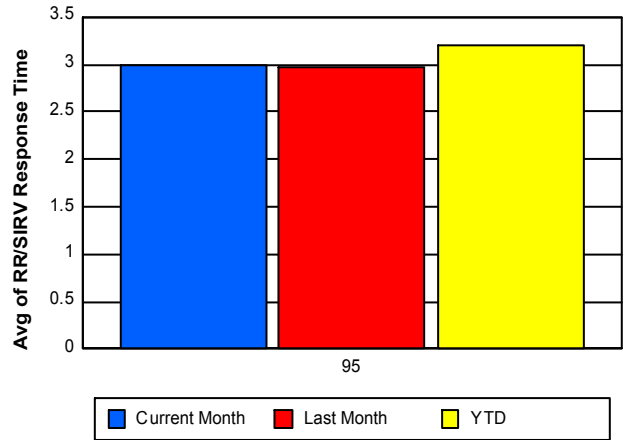
TMC Response Time



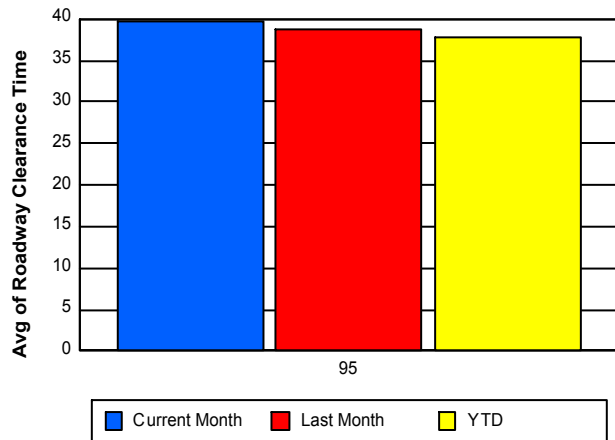
Road Ranger / SIRV Dispatch Time



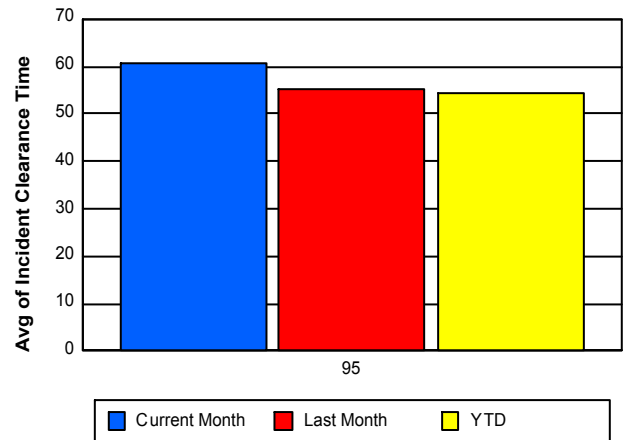
Road Ranger / SIRV Response Time



Roadway Clearance Time (2A)



Incident Clearance Time (3B)



Performance Measures by Event Type

Abandoned Vehicle

	<u>Current Month</u>	<u>Last Month</u>	<u>YTD</u>
Number of Events	524	482	6,352
Number of Incidents	7	1	29
TMC Detection (min.)	0.00	0.01	0.01
TMC Verification (min.)	0.52	1.14	0.77
TMC Response (min.)	12.63	4.40	5.96
RR Dispatch Time (min.)	11.50	3.10	4.97
RR Response Time (min.)	1.13	1.30	0.98
Event Clearance (min.)	213.59	199.86	198.58
Roadway Clearance (min.)	45.37	47.82	29.02
Incident Clearance (min.)	45.63	49.22	96.23
# of Events w/ RR/SIRV	424	388	5,229
RR/SIRV Assists	433	392	5,417
RR/SIRV Activities	442	398	5,576

Accident

	<u>Current Month</u>	<u>Last Month</u>	<u>YTD</u>
Number of Events	225	244	2,972
Number of Incidents	107	132	1,312
TMC Detection (min.)	0.24	0.25	0.31
TMC Verification (min.)	7.01	5.11	5.98
TMC Response (min.)	7.97	6.75	7.73
RR Dispatch Time (min.)	1.20	1.05	1.25
RR Response Time (min.)	6.85	5.71	6.49
Event Clearance (min.)	62.11	63.86	54.64
Roadway Clearance (min.)	44.75	46.80	46.49
Incident Clearance (min.)	72.15	66.68	69.26
# of Events w/ RR/SIRV	220	240	2,910
RR/SIRV Assists	286	304	3,527
RR/SIRV Activities	304	325	3,889

Congestion

	<u>Current Month</u>	<u>Last Month</u>	<u>YTD</u>
Number of Events	4	7	75
Number of Incidents	0	0	3
TMC Detection (min.)	0.23	0.00	0.04
TMC Verification (min.)	8.01	0.00	3.01
TMC Response (min.)	22.82	2.65	15.59
RR Dispatch Time (min.)	4.23	2.58	5.60
RR Response Time (min.)	18.59	2.57	12.78
Event Clearance (min.)	22.85	32.27	36.12
Roadway Clearance (min.)			52.32
Incident Clearance (min.)			79.64
# of Events w/ RR/SIRV	2	2	35
RR/SIRV Assists	2	2	39
RR/SIRV Activities	2	2	40

Debris on Roadway

	<u>Current Month</u>	<u>Last Month</u>	<u>YTD</u>
Number of Events	136	130	2,141
Number of Incidents	18	15	267
TMC Detection (min.)	0.19	0.25	0.20
TMC Verification (min.)	7.39	7.12	7.19
TMC Response (min.)	7.27	7.60	7.41
RR Dispatch Time (min.)	0.81	1.57	1.24
RR Response Time (min.)	6.45	6.04	6.17
Event Clearance (min.)	22.04	12.68	12.46
Roadway Clearance (min.)	10.31	11.95	12.56
Incident Clearance (min.)	11.97	14.04	14.64
# of Events w/ RR/SIRV	132	130	2,128
RR/SIRV Assists	138	134	2,211
RR/SIRV Activities	138	138	2,252

Disabled Vehicle

	<u>Current Month</u>	<u>Last Month</u>	<u>YTD</u>
Number of Events	1,867	1,839	21,942
Number of Incidents	27	36	550
TMC Detection (min.)	0.05	0.05	0.07
TMC Verification (min.)	3.28	3.13	3.35
TMC Response (min.)	3.34	3.32	3.62
RR Dispatch Time (min.)	0.74	0.62	0.70
RR Response Time (min.)	2.62	2.73	2.93
Event Clearance (min.)	16.32	15.11	16.53
Roadway Clearance (min.)	23.99	20.34	23.66
Incident Clearance (min.)	40.43	31.19	34.08
# of Events w/ RR/SIRV	1,843	1,812	21,705
RR/SIRV Assists	1,896	1,863	22,372
RR/SIRV Activities	1,986	1,998	24,048

Emergency Vehicles

	<u>YTD</u>
Number of Events	10
Number of Incidents	6
TMC Detection (min.)	0.22
TMC Verification (min.)	3.15
TMC Response (min.)	3.90
RR Dispatch Time (min.)	0.99
RR Response Time (min.)	3.34
Event Clearance (min.)	24.29
Roadway Clearance (min.)	15.56
Incident Clearance (min.)	26.48
# of Events w/ RR/SIRV	8
RR/SIRV Assists	8
RR/SIRV Activities	9

Off Ramp Backup

	<u>YTD</u>
Number of Events	2
Number of Incidents	0
TMC Detection (min.)	0.00
TMC Verification (min.)	0.00
TMC Response (min.)	5.67
RR Dispatch Time (min.)	0.40
RR Response Time (min.)	5.27
Event Clearance (min.)	19.78
Roadway Clearance (min.)	
Incident Clearance (min.)	
# of Events w/ RR/SIRV	1
RR/SIRV Assists	2
RR/SIRV Activities	2

Other

	<u>Current Month</u>	<u>Last Month</u>	<u>YTD</u>
Number of Events	20	25	345
Number of Incidents	0	0	7
TMC Detection (min.)	0.09	0.01	0.12
TMC Verification (min.)	6.91	7.06	5.81
TMC Response (min.)	13.46	14.70	9.13
RR Dispatch Time (min.)	2.52	2.21	1.25
RR Response Time (min.)	12.28	11.91	8.01
Event Clearance (min.)	27.88	13.17	17.69
Roadway Clearance (min.)			57.86
Incident Clearance (min.)			63.85
# of Events w/ RR/SIRV	13	15	281
RR/SIRV Assists	15	15	293
RR/SIRV Activities	15	15	304

Pedestrian

	<u>Current Month</u>	<u>Last Month</u>	<u>YTD</u>
Number of Events	18	22	185
Number of Incidents	0	0	1
TMC Detection (min.)	0.02	0.04	0.10
TMC Verification (min.)	2.60	0.24	2.22
TMC Response (min.)	3.41	0.24	2.90
RR Dispatch Time (min.)	0.89	0.22	0.50
RR Response Time (min.)	2.52	0.01	2.40
Event Clearance (min.)	14.59	8.80	13.59
Roadway Clearance (min.)			18.32
Incident Clearance (min.)			19.55
# of Events w/ RR/SIRV	18	22	181
RR/SIRV Assists	19	22	185
RR/SIRV Activities	20	22	189

Police Activity

	<u>Current Month</u>	<u>Last Month</u>	<u>YTD</u>
Number of Events	3	6	54
Number of Incidents	1	2	35
TMC Detection (min.)	0.21	0.00	0.16
TMC Verification (min.)	11.64	0.00	3.24
TMC Response (min.)	11.78	0.00	8.50
RR Dispatch Time (min.)	1.06	0.00	2.26
RR Response Time (min.)	10.72	0.00	6.30
Event Clearance (min.)	121.37	21.96	61.06
Roadway Clearance (min.)	308.97	37.47	72.80
Incident Clearance (min.)	324.20	42.13	84.52
# of Events w/ RR/SIRV	3	6	48
RR/SIRV Assists	6	7	67
RR/SIRV Activities	6	7	70

Road Work - Emergency

	<u>Current Month</u>	<u>YTD</u>
Number of Events	2	30
Number of Incidents	2	27
TMC Detection (min.)	0.00	0.11
TMC Verification (min.)	14.27	4.30
TMC Response (min.)	14.22	9.58
RR Dispatch Time (min.)	0.53	2.31
RR Response Time (min.)	13.68	7.27
Event Clearance (min.)	61.72	58.51
Roadway Clearance (min.)	92.52	96.59
Incident Clearance (min.)	61.72	58.52
# of Events w/ RR/SIRV	2	26
RR/SIRV Assists	3	45
RR/SIRV Activities	3	45

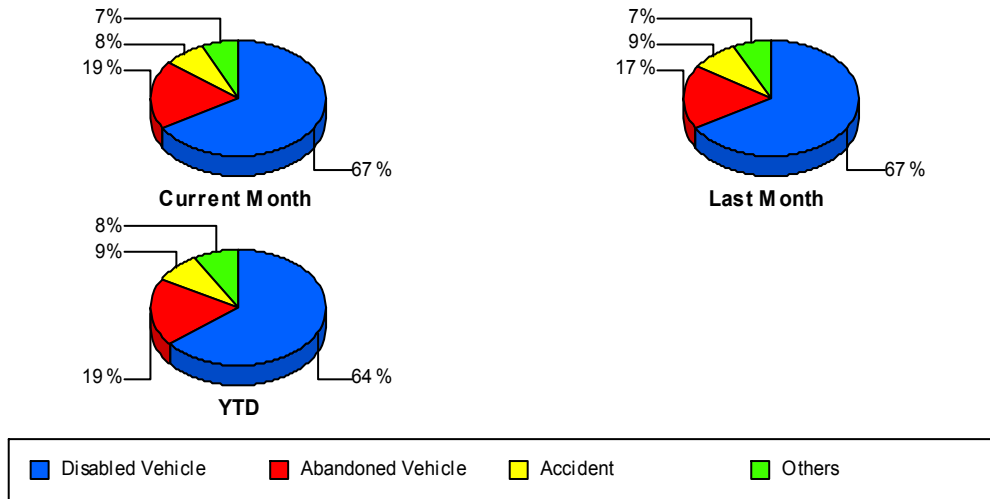
Visibility

	<u>YTD</u>
Number of Events	2
Number of Incidents	0
TMC Detection (min.)	0.00
TMC Verification (min.)	0.00
TMC Response (min.)	0.00
RR Dispatch Time (min.)	0.00
RR Response Time (min.)	0.00
Event Clearance (min.)	22.63
Roadway Clearance (min.)	
Incident Clearance (min.)	
# of Events w/ RR/SIRV	1
RR/SIRV Assists	1
RR/SIRV Activities	1

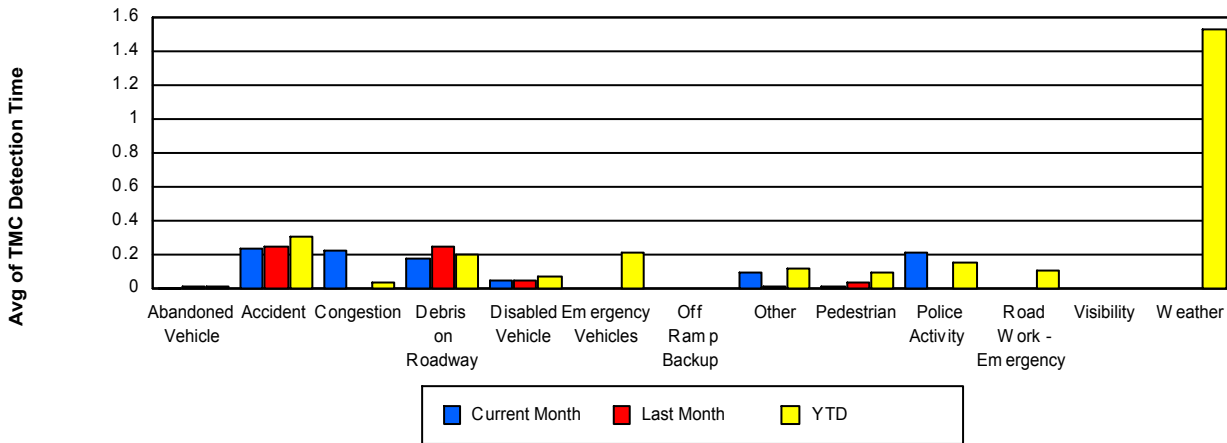
Weather

	<u>YTD</u>
Number of Events	12
Number of Incidents	6
TMC Detection (min.)	1.53
TMC Verification (min.)	14.41
TMC Response (min.)	20.54
RR Dispatch Time (min.)	2.09
RR Response Time (min.)	18.45
Event Clearance (min.)	77.31
Roadway Clearance (min.)	120.43
Incident Clearance (min.)	95.04
# of Events w/ RR/SIRV	11
RR/SIRV Assists	11
RR/SIRV Activities	11

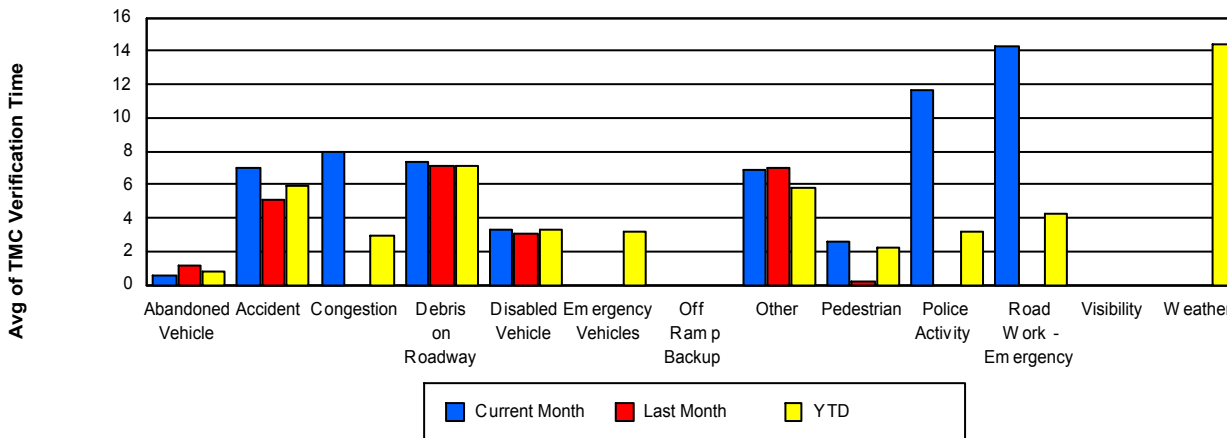
Number of Events / Event Type



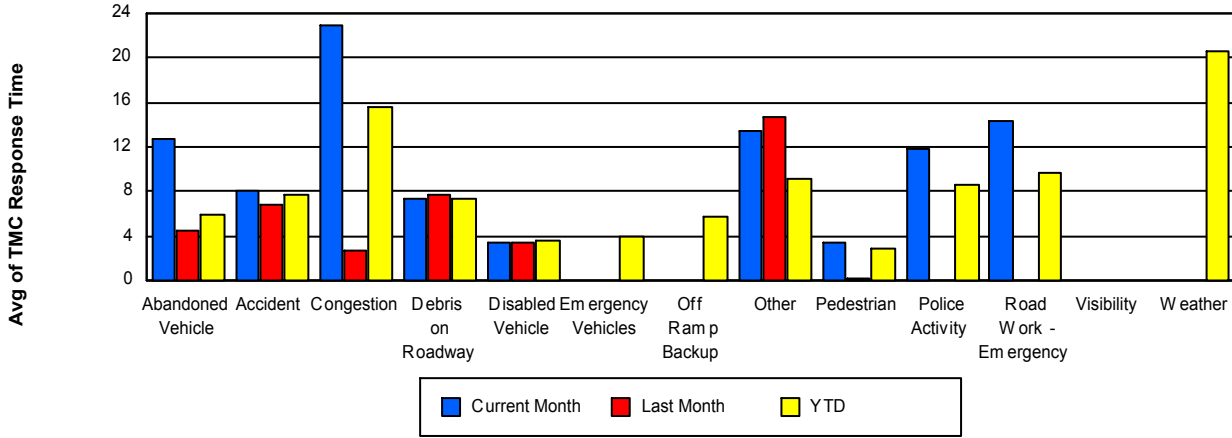
TMC Detection Time



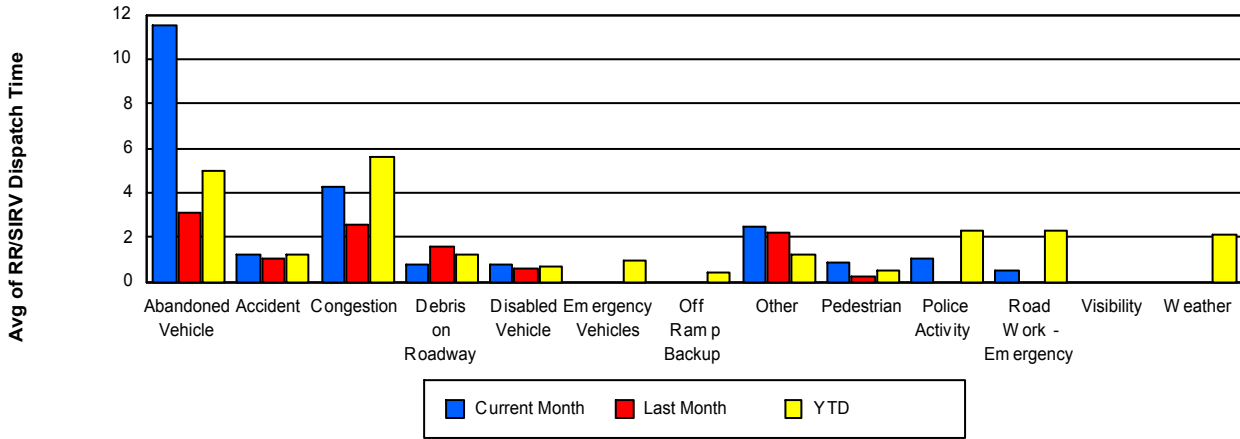
TMC Verification Time



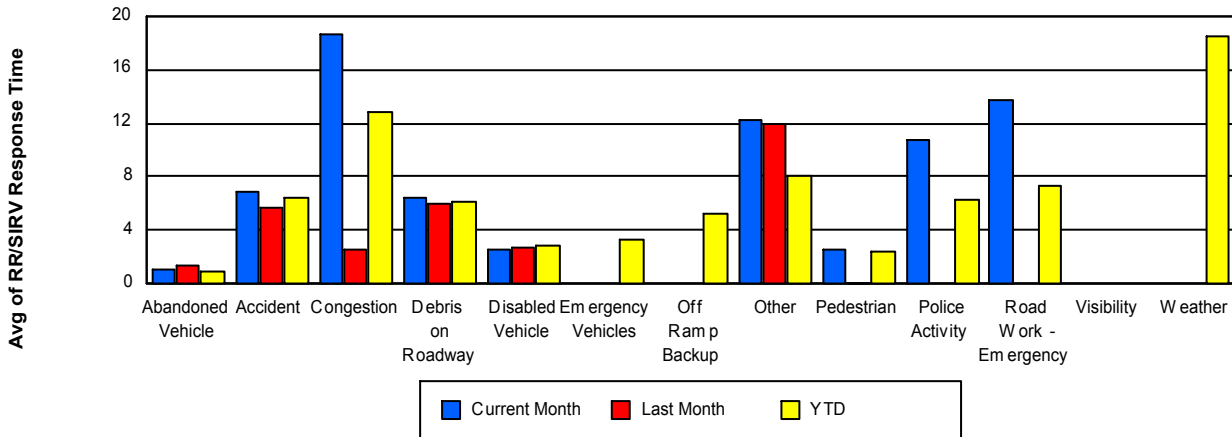
TMC Response Time



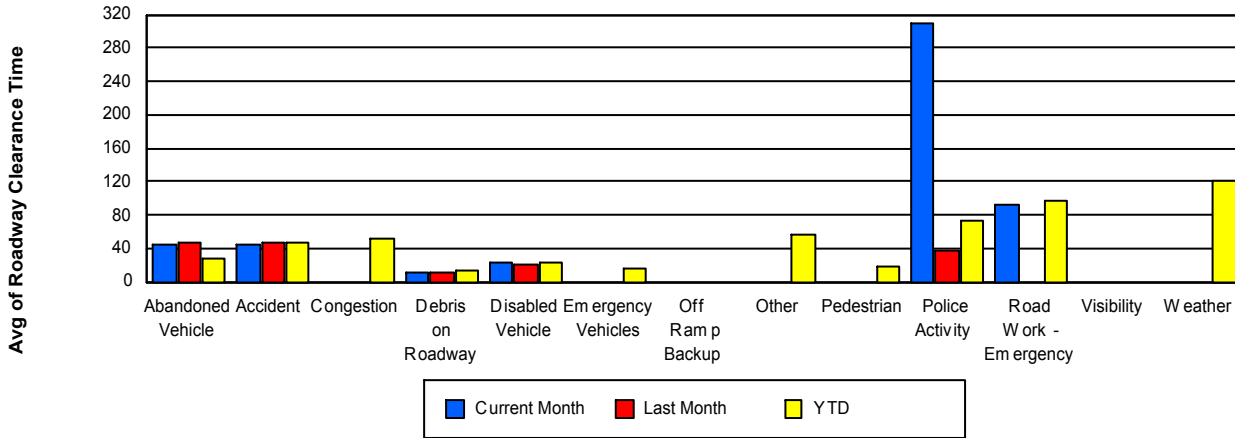
Road Ranger / SIRV Dispatch Time



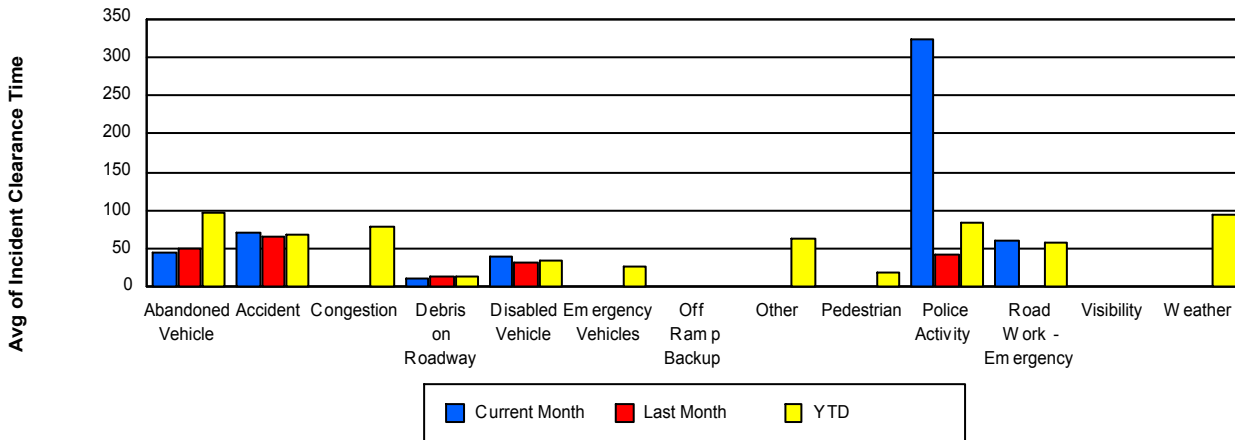
Road Ranger / SIRV Response Time



Roadway Clearance Time (2A)



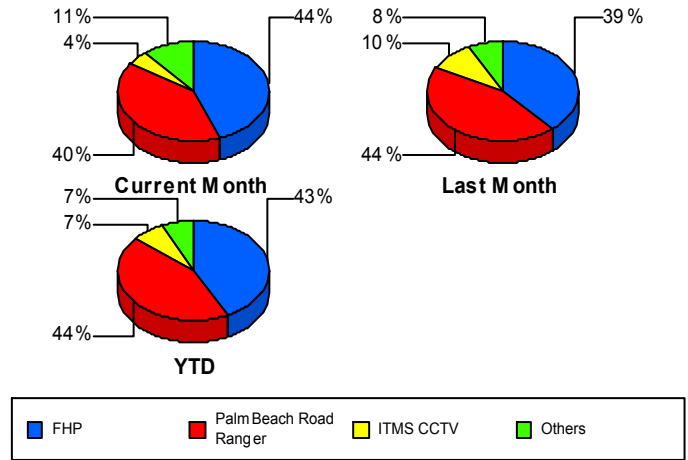
Incident Clearance Time (3B)



Incident Detection Methods

	Current Month	Last Month	YTD
Broward CCTV	0	0	1
Broward Road Ranger	1	2	10
Broward TMC	0	0	3
Construction CEI	2	0	8
District 4	4	6	23
FDOT Maintenance	0	0	2
FHP	72	72	959
I-95 Construction PIO	1	0	7
ITMS	3	2	23
ITMS CCTV	7	18	152
Media	0	0	15
MIST Map RTMS Alert	0	0	1
Motorist	6	3	35
Other	0	0	8
Palm Beach County Sc	0	0	1
Palm Beach Road Rang	65	82	977
Road Watcher	1	0	2
SIRV	0	0	1
SmarTraveler (511)	0	1	15
Total	162	186	2,243

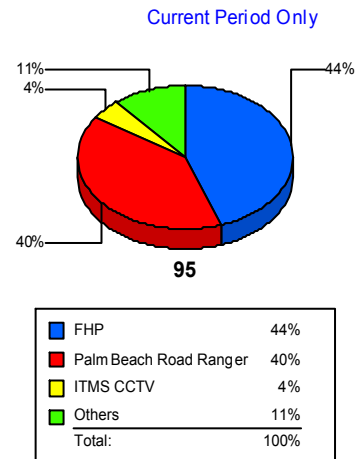
Total Incidents by Detection Method



Incident Detection Methods by Roadway

		Current Month	Last Month	YTD
95	Broward CCTV	0	0	1
	Broward Road Ranger	1	2	10
	Broward TMC	0	0	3
	Construction CEI	2	0	8
	District 4	4	6	23
	FDOT Maintenance	0	0	2
	FHP	72	72	959
	I-95 Construction PIO	1	0	7
	ITMS	3	2	23
	ITMS CCTV	7	18	152
	Media	0	0	15
	MIST Map RTMS Alert	0	0	1
	Motorist	6	3	35
	Other	0	0	8
	Palm Beach County Sc	0	0	1
	Palm Beach Road Rang	65	82	977
	Road Watcher	1	0	2
	SIRV	0	0	1
	SmarTraveler (511)	0	1	15
Total	162	186	2,243	
Total	162	186	2,243	

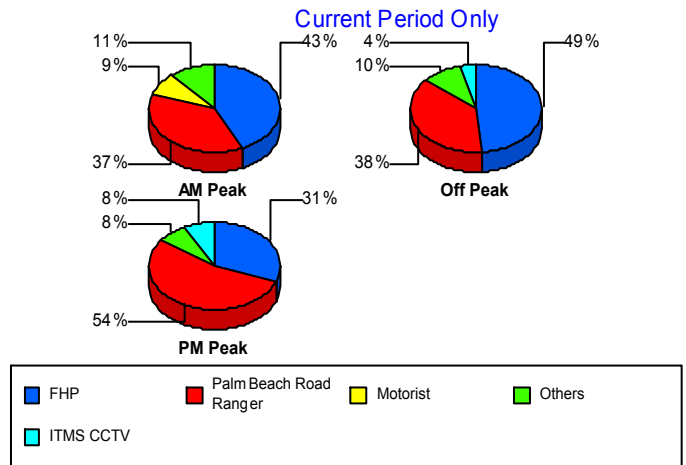
Total Events by Roadway and Detection Method



Incident Detection Methods by Peak Period

		Current Month	Last Month	YTD
AM Peak	Broward Road Ranger	0	0	1
	Construction CEI	0	0	3
	District 4	1	2	6
	FHP	15	17	202
	I-95 Construction PIO	0	0	2
	ITMS	1	2	9
	ITMS CCTV	1	3	37
	Media	0	0	2
	Motorist	3	2	9
	Palm Beach Road Rang	13	17	286
	Road Watcher	1	0	1
	SmarTraveler (511)	0	0	4
	Total	35	43	562
	Off Peak	Broward Road Ranger	1	2
Broward TMC		0	0	1
Construction CEI		2	0	4
District 4		2	4	11
FDOT Maintenance		0	0	1
FHP		49	37	564
I-95 Construction PIO		1	0	5
ITMS		1	0	9
ITMS CCTV		4	9	68
Media		0	0	3
MIST Map RTMS Alert		0	0	1
Motorist		3	1	19
Other		0	0	5
Palm Beach County Sc		0	0	1
Palm Beach Road Rang		38	49	457
SIRV		0	0	1
SmarTraveler (511)		0	0	4
Total		101	102	1,161

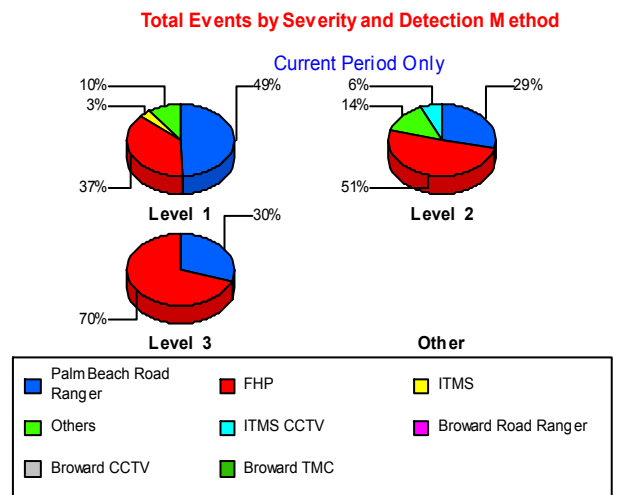
Total Events by Peak Period and Detection Method



		Current Month	Last Month	YTD
PM Peak	Broward CCTV	0	0	1
	Broward Road Ranger	0	0	2
	Broward TMC	0	0	2
	Construction CEI	0	0	1
	District 4	1	0	6
	FDOT Maintenance	0	0	1
	FHP	8	18	193
	ITMS	1	0	5
	ITMS CCTV	2	6	47
	Media	0	0	10
	Motorist	0	0	7
	Other	0	0	3
	Palm Beach Road Rang	14	16	234
	Road Watcher	0	0	1
	SmarTraveler (511)	0	1	7
Total	26	41	520	
Total	162	186	2,243	

Incident Detection Methods by Severity

		Current Month	Last Month	YTD
Level 1	Broward CCTV	0	0	1
	Broward Road Ranger	1	2	7
	Broward TMC	0	0	2
	Construction CEI	2	0	2
	District 4	1	5	10
	FDOT Maintenance	0	0	2
	FHP	33	27	408
	I-95 Construction PIO	0	0	2
	ITMS	3	1	13
	ITMS CCTV	3	12	95
	Media	0	0	7
	Motorist	2	3	18



		Current Month	Last Month	YTD
Level 1	Other	0	0	6
	Palm Beach Road Rang	44	47	669
	SmarTraveler (511)	0	0	8
	Total	89	97	1,250
Level 2	Broward Road Ranger	0	0	2
	Construction CEI	0	0	5
	District 4	3	1	8
	FHP	32	34	399
	I-95 Construction PIO	1	0	4
	ITMS	0	1	7
	ITMS CCTV	4	5	42
	Media	0	0	6
	MIST Map RTMS Alert	0	0	1
	Motorist	4	0	16
	Other	0	0	2
	Palm Beach County Sc	0	0	1
	Palm Beach Road Rang	18	28	227
	Road Watcher	1	0	1
	SIRV	0	0	1
	SmarTraveler (511)	0	0	6
	Total	63	69	728
Level 3	Broward Road Ranger	0	0	1
	Broward TMC	0	0	1
	Construction CEI	0	0	1
	District 4	0	0	5
	FHP	7	11	152
	I-95 Construction PIO	0	0	1
	ITMS	0	0	3
	ITMS CCTV	0	1	15
	Media	0	0	2
	Motorist	0	0	1
	Palm Beach Road Rang	3	7	81

		Current Month	Last Month	YTD
Level 3	Road Watcher	0	0	1
	SmarTraveler (511)	0	1	1
	Total	10	20	265
Total		162	186	2,243

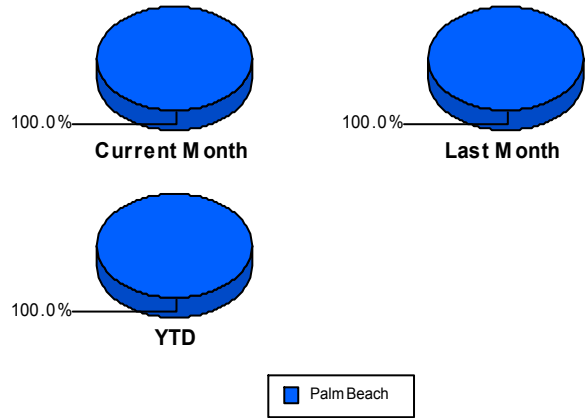
Road Ranger / SIRV Performance Measures

Road Ranger / SIRV Performance By County

RR/SIRV Responses per County

Values presented are:
 - Total Events with a RR/SIRV Response
 - Total RR/SIRV Responses,
 - Total Activities Performed

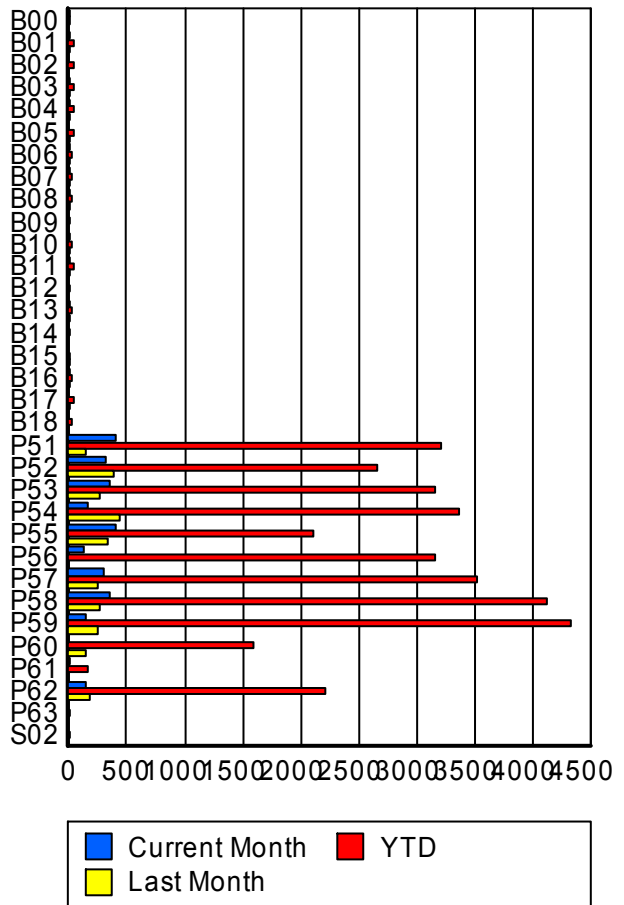
	Current Mo	Last Month	YTD
Palm Beach	2,656	2,615	32,563
	2,797	2,739	34,177
	2,915	2,905	36,435



Road Ranger / SIRV Performance By Truck

	Current Mo	Last Month	YTD
B00	1	0	9
	1	0	9
	1	0	10
B01	5	7	50
	5	7	50
	5	7	52
B02	0	0	46
	0	0	46
	0	0	48
B03	5	13	39
	5	13	39
	5	13	39
B04	6	5	46
	6	5	46
	6	5	46
B05	0	5	38
	0	5	38
	0	6	39
B06	5	4	32
	5	4	32
	5	4	32
B07	1	6	25
	1	6	25
	1	6	26
B08	6	3	28
	6	3	29
	6	3	30

**RR/SIRV
Responses per
Truck**



	Current Mo	Last Month	YTD
B09	0 0 0	0 0 0	1 1 1
B10	5 6 6	4 4 4	18 19 19
B11	3 3 3	7 7 7	50 50 53
B12	0 0 0	0 0 0	11 12 12
B13	2 2 3	1 1 1	25 25 27
B14	0 0 0	0 0 0	15 15 16
B15	0 0 0	3 3 3	13 13 13
B16	5 5 6	1 1 1	23 23 26
B17	0 0 0	3 3 3	45 45 47
B18	0 0 0	0 0 0	32 32 33
P51	404 408 424	146 146 151	3,180 3,210 3,411
P52	316 319 335	387 392 409	2,633 2,667 2,833
P53	355 362 374	273 274 292	3,133 3,168 3,373
P54	166 166 175	431 434 465	3,337 3,375 3,601
P55	391 397 410	324 329 356	2,082 2,112 2,261

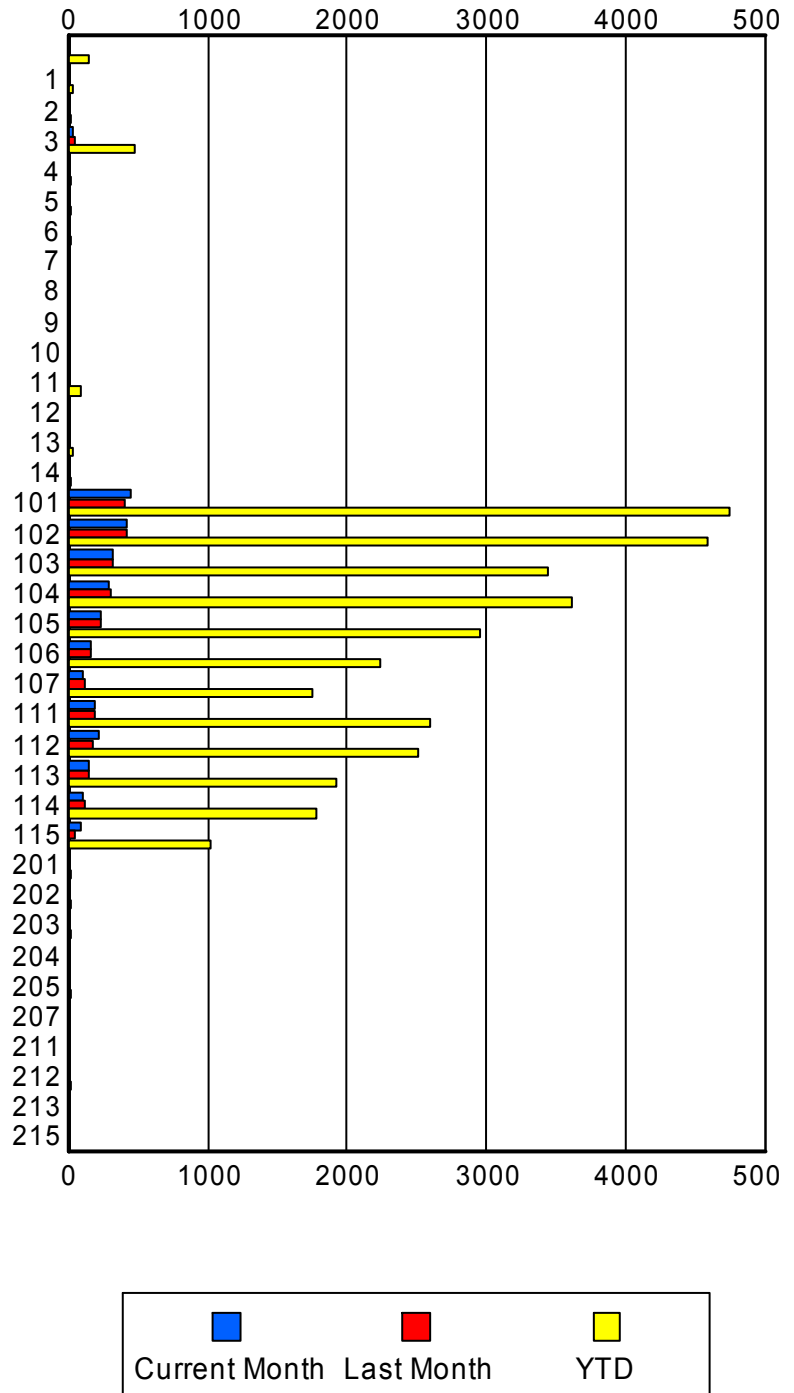
	Current Mo	Last Month	YTD
P56	133	0	3,127
	134	0	3,155
	140	0	3,356
P57	304	247	3,484
	306	252	3,519
	318	270	3,776
P58	348	270	4,062
	356	274	4,119
	376	293	4,393
P59	143	249	4,285
	146	251	4,334
	154	268	4,622
P60	0	138	1,573
	0	141	1,596
	0	150	1,721
P61	4	0	159
	4	0	160
	4	0	172
P62	151	183	2,188
	154	184	2,210
	158	188	2,344
P63	0	0	2
	0	0	2
	0	0	2
S02	0	0	1
	0	0	1
	0	0	1

Road Ranger / SIRV Performance By Beat

	Current Mo	Last Month	YTD
	7	4	148
	7	4	151
	7	4	160
1	1	0	26
	1	0	27
	1	0	27
2	0	0	24
	0	0	24
	0	0	26
3	35	51	472
	35	51	476
	37	52	495
4	0	0	23
	0	0	24
	0	0	24
5	0	0	15
	0	0	15
	0	0	19
6	0	0	13
	0	0	13
	0	0	15
7	0	0	12
	0	0	12
	0	0	12
8	0	0	3
	0	0	3
	0	0	3
9	0	0	1
	0	0	1
	0	0	1
10	0	0	3
	0	0	3
	0	0	3
11	7	11	92
	8	11	93
	8	11	94
12	0	0	12
	0	0	12
	0	0	15
13	0	0	24
	0	0	27
	0	0	28
14	0	0	16
	0	0	16
	0	0	18

Values presented are:
 - Total Events with a RR/SIRV Response
 - Total RR/SIRV Responses,
 - Total Activities Performed

RR/SIRV Responses per Beat



	Current Mo	Last Month	YTD
101	448 455 471	406 408 426	4,699 4,744 4,997
102	409 419 429	423 427 449	4,520 4,581 4,799
103	314 321 331	317 319 335	3,393 3,446 3,684
104	293 295 311	310 310 326	3,569 3,618 3,859
105	237 238 251	235 238 251	2,927 2,960 3,125
106	162 164 170	158 161 167	2,208 2,237 2,367
107	103 107 108	119 121 124	1,735 1,754 1,831
111	197 198 210	190 197 225	2,566 2,596 2,818
112	210 213 220	171 174 194	2,474 2,506 2,707
113	144 145 155	142 143 155	1,900 1,923 2,121
114	101 104 112	119 120 127	1,747 1,774 1,938
115	85 87 94	53 55 59	1,010 1,022 1,122
201	0 0 0	0 0 0	18 18 18
202	0 0 0	0 0 0	20 20 20
203	0 0 0	0 0 0	15 15 17

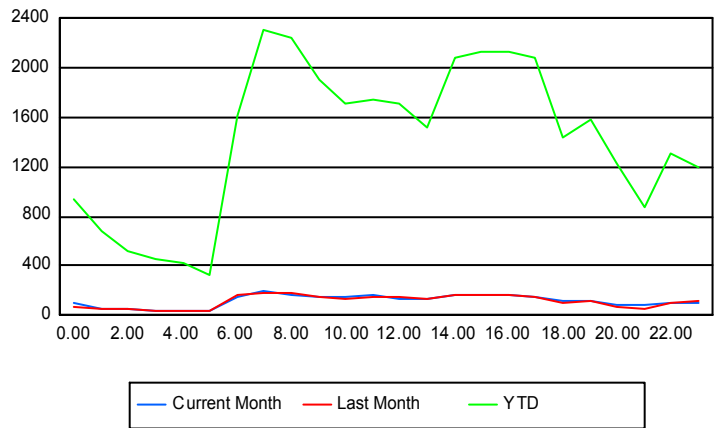
	Current Mo	Last Month	YTD
204	0	0	10
	0	0	10
	0	0	13
205	0	0	16
	0	0	16
	0	0	18
207	0	0	5
	0	0	5
	0	0	5
211	0	0	10
	0	0	10
	0	0	10
212	0	0	17
	0	0	17
	0	0	17
213	0	0	7
	0	0	7
	0	0	8
215	0	0	1
	0	0	1
	0	0	1

Road Ranger / SIRV Performance By Time of Day

Values presented are:
 - Total Events with a RR/SIRV Response
 - Total RR/SIRV Responses,
 - Total Activities Performed

	Current Mo	Last Month	YTD
12AM-1AM	85	65	882
	94	74	943
	103	80	1,038
1AM-2AM	45	41	634
	47	46	685
	53	52	758
2AM-3AM	43	43	495
	54	46	525
	56	52	566
3AM-4AM	25	35	424
	29	37	462
	31	42	509
4AM-5AM	32	29	386
	36	33	428
	38	40	476
5AM-6AM	27	26	269
	30	31	321
	30	39	362

Number of Responses / Hour of the Day



	Current Mo	Last Month	YTD
6AM-7AM	134	159	1,522
	144	163	1,614
	152	174	1,716
7AM-8AM	190	183	2,214
	201	186	2,302
	212	197	2,448
8AM-9AM	157	176	2,142
	164	182	2,244
	167	189	2,374
9AM-10AM	136	143	1,826
	143	149	1,908
	150	155	2,027
10AM-11AM	148	128	1,645
	153	132	1,715
	160	134	1,832
11AM-12PM	152	143	1,664
	164	149	1,745
	169	157	1,835
12PM-1PM	131	139	1,629
	137	148	1,714
	143	158	1,826
1PM-2PM	123	134	1,450
	130	140	1,524
	139	144	1,614
2PM-3PM	168	160	1,989
	171	164	2,078
	175	169	2,196
3PM-4PM	163	160	2,044
	172	162	2,124
	177	168	2,219
4PM-5PM	164	165	2,056
	166	168	2,126
	170	175	2,244
5PM-6PM	147	150	2,018
	154	156	2,091
	159	165	2,190
6PM-7PM	115	102	1,371
	117	108	1,433
	117	114	1,517
7PM-8PM	116	108	1,522
	119	111	1,576
	122	115	1,674
8PM-9PM	83	70	1,188
	87	73	1,234
	90	77	1,314

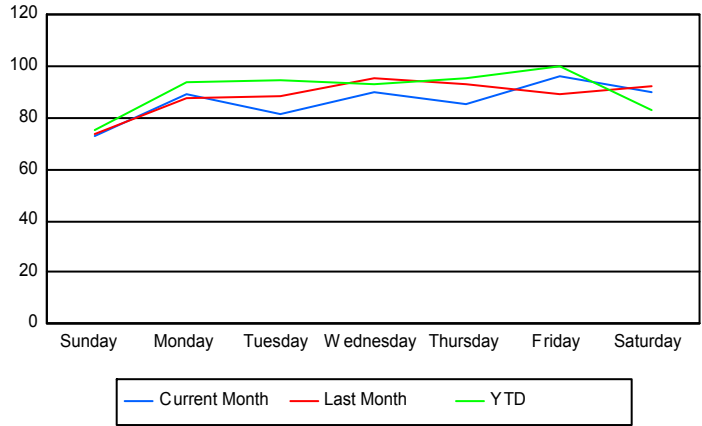
	Current Mo	Last Month	YTD
9PM-10PM	82	53	824
	85	58	876
	86	61	930
10PM-11PM	95	102	1,231
	101	106	1,310
	112	123	1,452
11PM-12AM	95	101	1,138
	99	117	1,199
	104	125	1,318

Road Ranger / SIRV Performance By Day of Week

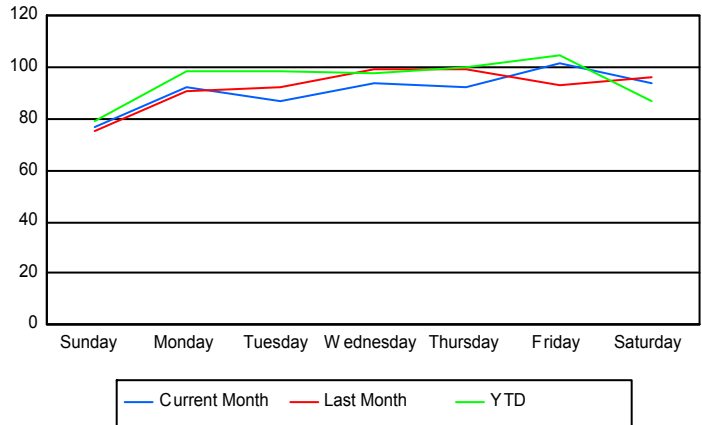
Values presented are:
 - Total Events with a RR/SIRV Response
 - Total RR/SIRV Responses,
 - Total Activities Performed

	Current Mo	Last Month	YTD
Sunday	361 383 394	294 300 322	3,835 4,025 4,308
Monday	441 457 477	347 360 379	4,924 5,135 5,477
Tuesday	321 341 360	352 368 387	4,850 5,066 5,403
Wednesday	359 374 385	374 391 409	4,800 5,005 5,272
Thursday	341 368 383	457 486 525	4,875 5,121 5,464
Friday	384 404 424	439 457 486	5,139 5,380 5,745
Saturday	450 470 492	360 377 397	4,228 4,445 4,766

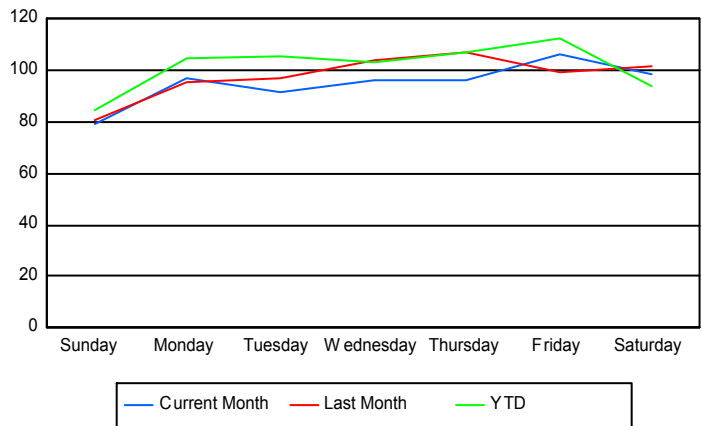
Avg # of events with a RR/SIRV Response per Day of the Week



Avg # of RR/SIRV Responses per Day of the Week



Avg # of RR/SIRV Activities Performed per Day of the Week



Road Ranger/ SIRV Responses per Time of Day and Day of Week

