



# Monthly Performance Measures Report Palm Beach County



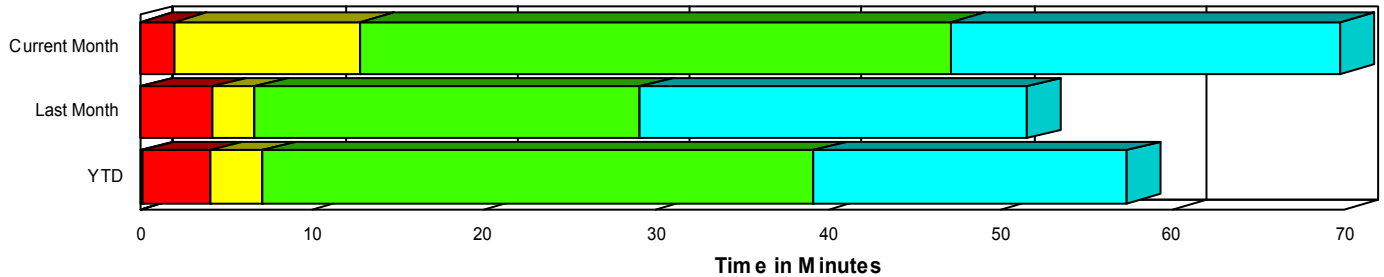
Created on:  
January 05, 2009  
9:09 am

Period From Dec 1, 2008 to Dec 31, 2008

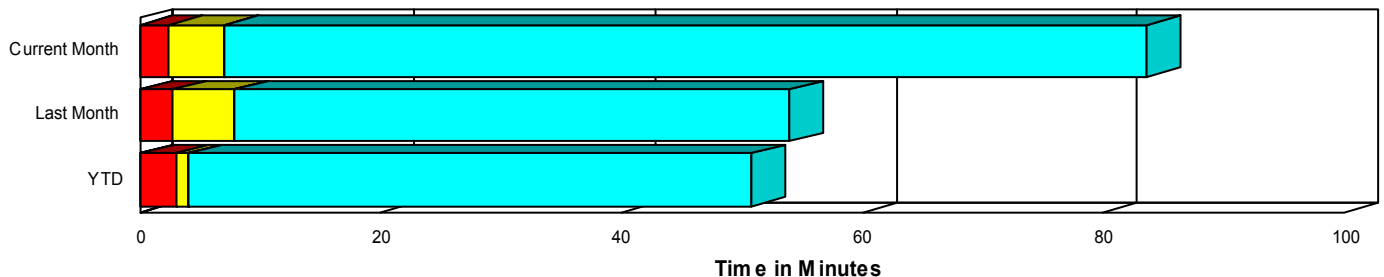
## Performance Measures Summary

	Traffic Events (No Lanes Blocked)			Incidents (Lanes Blocked)		
	<u>This Month</u>	<u>Last Month</u>	<u>YTD</u>	<u>This Month</u>	<u>Last Month</u>	<u>YTD</u>
Number of Events	1,520	1,309	26,407	72	85	1,559
TMC Detection (min.)	0.00	0.00	0.09	0.00	0.01	0.11
TMC Verification (min.)	2.43	2.77	2.88	1.98	4.20	3.95
TMC Response (min.)	8.01	8.94	4.14	13.33	7.33	7.25
RR Dispatch Time (min.)	4.79	5.47	1.64	8.50	1.83	2.56
RR Response Time (min.)	3.15	3.87	2.58	4.46	5.50	4.77
Roadway Clearance (min.)				42.77	29.88	39.59
Event Clearance (min.)	84.55	54.95	51.02	65.40	52.36	56.92
# of Events w/ RR/SIRV	1,136	971	24,403	61	73	1,416
RR/SIRV Responses	1,136	971	24,510	61	73	1,493
RR/SIRV Activities	1,193	1,004	26,249	78	111	2,019

### Incident Clearance TimeLine



### Traffic Event(Non-Lane Blockage) Time-Line



<ul style="list-style-type: none"> <li><span style="display: inline-block; width: 15px; height: 15px; background-color: blue; margin-right: 5px;"></span> Avg. TMC Detection Time</li> <li><span style="display: inline-block; width: 15px; height: 15px; background-color: red; margin-right: 5px;"></span> Avg. Time from TMC Detection to TMC Verification</li> <li><span style="display: inline-block; width: 15px; height: 15px; background-color: yellow; margin-right: 5px;"></span> Avg. Time from TMC Verification to TMC Response</li> </ul>	<ul style="list-style-type: none"> <li><span style="display: inline-block; width: 15px; height: 15px; background-color: green; margin-right: 5px;"></span> Avg. Time from TMC Response to Roadway Clearance*</li> <li><span style="display: inline-block; width: 15px; height: 15px; background-color: cyan; margin-right: 5px;"></span> Avg. Time from Roadway Clearance to Incident/Event Clearance**</li> </ul>
--	--

\* Roadway clearance equals all travel lanes open

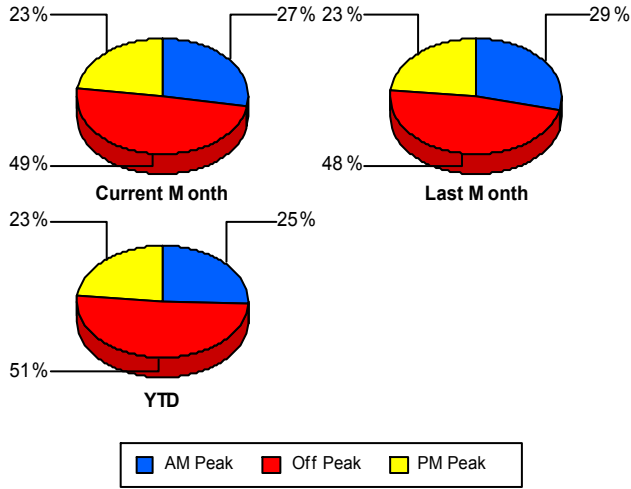
\*\* Incident clearance equals time when last responder has left the scene

## Performance Measures by Peak Period

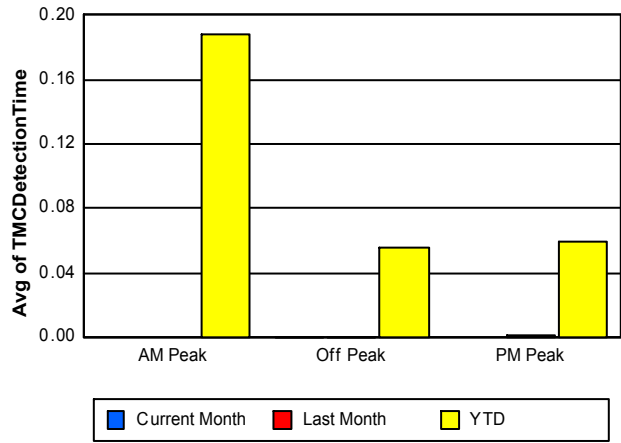
Note: AM peak period is defined as 6am to 10am and PM peak period is defined as 3pm to 7pm.

	AM Peak			Off Peak			PM Peak		
	<u>Current Month</u>	<u>Last Month</u>	<u>YTD</u>	<u>Current Month</u>	<u>Last Month</u>	<u>YTD</u>	<u>Current Month</u>	<u>Last Month</u>	<u>YTD</u>
Number of Events	437	402	7,038	786	665	14,385	369	327	6,543
Number of Incidents	21	19	403	31	32	795	20	34	361
TMC Detection (min.)	0.00	0.00	0.19	0.00	0.00	0.06	0.00	0.00	0.06
TMC Verification (min.)	2.14	2.73	2.56	1.82	2.26	3.12	4.01	4.24	2.96
TMC Response (min.)	3.24	3.99	3.37	14.64	16.56	5.12	5.75	5.32	3.63
RR Dispatch Time (min.)	0.86	0.77	1.17	10.95	12.60	2.25	1.84	1.39	1.08
RR Response Time (min.)	2.42	3.23	2.30	3.33	4.77	2.96	4.06	3.97	2.60
Event Clearance (min.)	36.63	50.20	52.67	95.34	65.04	55.00	114.56	39.60	41.88
Roadway Clearance (min.)	24.91	36.83	36.07	65.14	32.09	43.87	26.83	23.92	34.07
Incident Clearance (min.)	67.70	81.44	56.67	80.07	45.97	60.01	40.26	42.14	50.41
# of Events w/ RR/SIRV	412	369	6,640	457	377	12,908	328	298	6,271
RR/SIRV Responses	412	369	6,685	457	377	13,011	328	298	6,307
RR/SIRV Activities	438	393	7,230	488	398	14,257	345	324	6,781

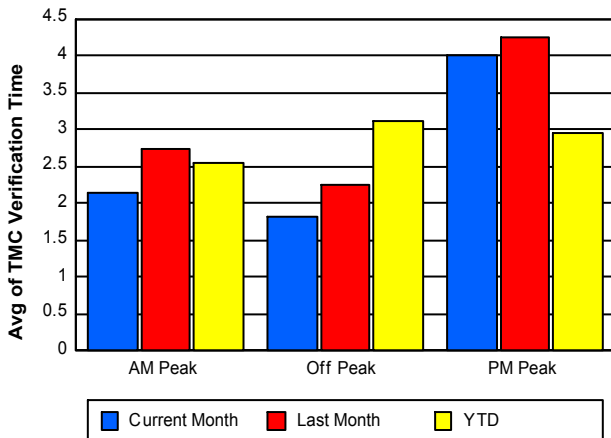
### Number of Events / Peak Period



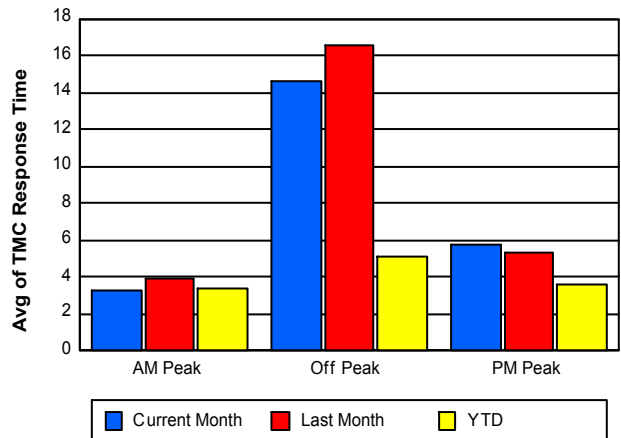
### TMC Detection Time



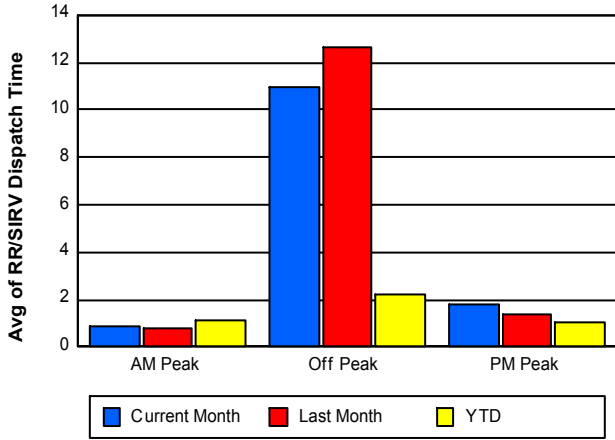
### TMC Verification Time



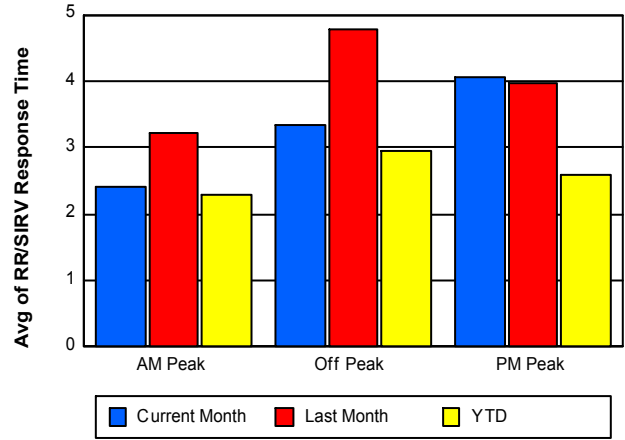
### TMC Response Time



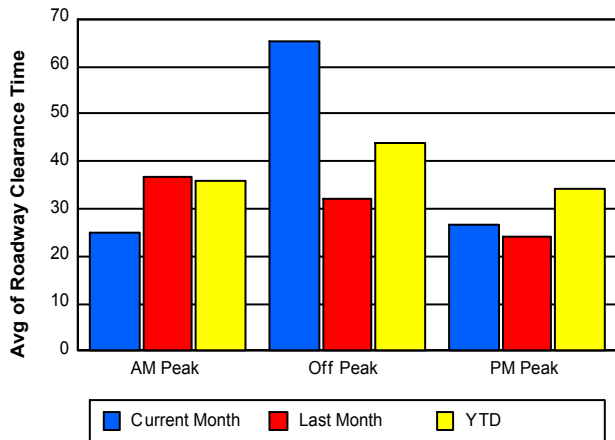
### Road Ranger / SIRV Dispatch Time



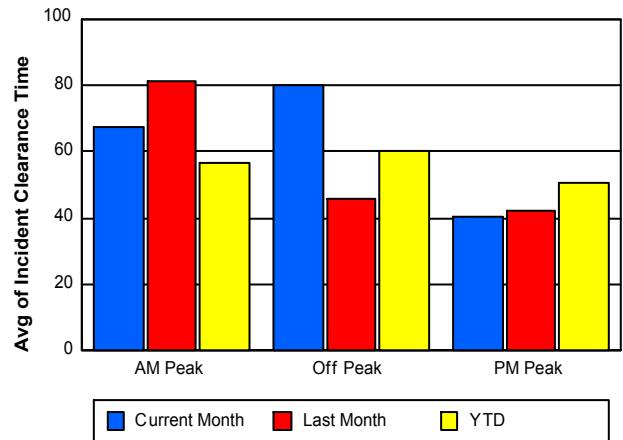
### Road Ranger / SIRV Response Time



### Roadway Clearance Time (2A)



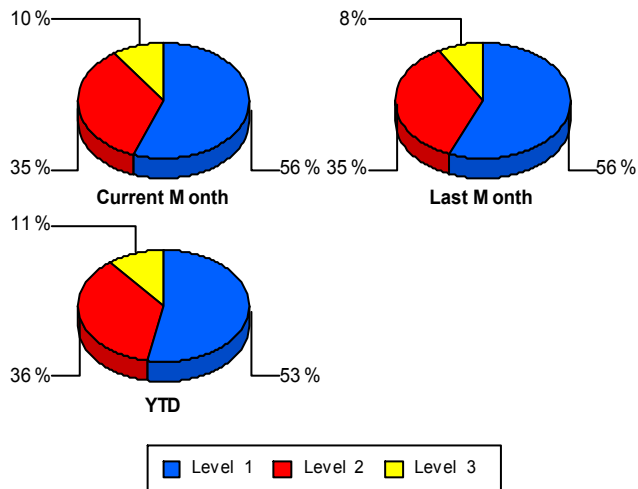
### Incident Clearance Time (3B)



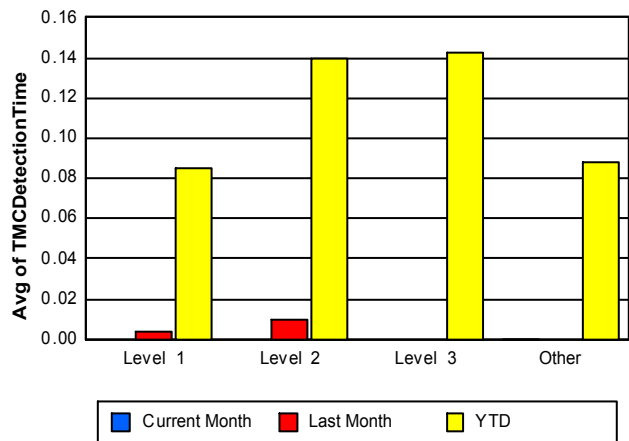
## Performance Measures by Severity

	Level 1			Level 2			Level 3			Other		
	<u>This Month</u>	<u>Last Month</u>	<u>YTD</u>	<u>This Month</u>	<u>Last Month</u>	<u>YTD</u>	<u>This Month</u>	<u>Last Month</u>	<u>YTD</u>	<u>This Month</u>	<u>Last Month</u>	<u>YTD</u>
Number of Events	40	48	826	25	30	566	7	7	167	1,520	1,309	26,407
Number of Incidents	40	48	826	25	30	566	7	7	167	0	0	0
TMC Detection (min.)	0.00	0.00	0.09	0.00	0.01	0.14	0.00	0.00	0.14	0.00	0.00	0.09
TMC Verification (min.)	1.86	2.91	2.28	2.68	6.61	6.21	0.13	2.72	4.55	2.43	2.77	2.88
TMC Response (min.)	6.47	4.90	4.55	7.35	12.11	9.47	59.83	6.05	13.45	8.01	8.94	4.14
RR Dispatch Time (min.)	3.42	1.28	1.58	1.30	2.97	2.79	53.75	1.13	7.08	4.79	5.47	1.64
RR Resp. Time (min.)	3.02	3.62	3.03	6.06	9.13	6.69	6.08	4.92	6.89	3.15	3.87	2.58
Event Clearance (min.)	39.57	45.69	33.88	65.15	58.92	69.06	213.94	70.06	129.76	84.55	54.95	51.02
Roadway Clear. (min.)	13.09	16.05	13.27	47.06	43.84	55.08	197.03	64.88	117.22			
Incident Clearance (min.)	39.57	45.69	33.88	65.15	58.92	69.06	213.94	70.06	129.76			
# of Events w/ RR/SIRV	34	45	754	20	24	525	7	4	137	1,136	971	24,403
RR/SIRV Responses	34	45	774	20	24	553	7	4	166	1,136	971	24,510
RR/SIRV Activities	35	67	967	31	38	786	12	6	266	1,193	1,004	26,249

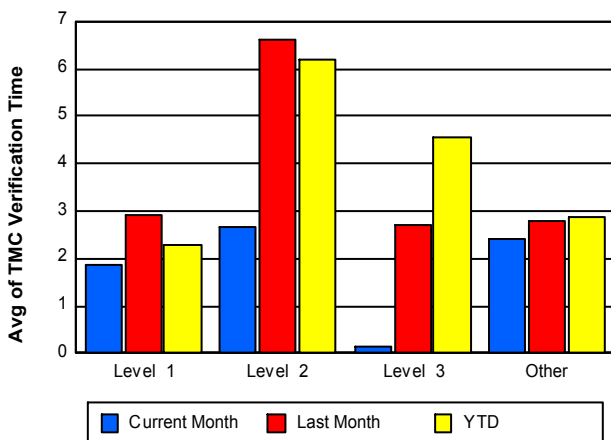
### Number of Events / Severity



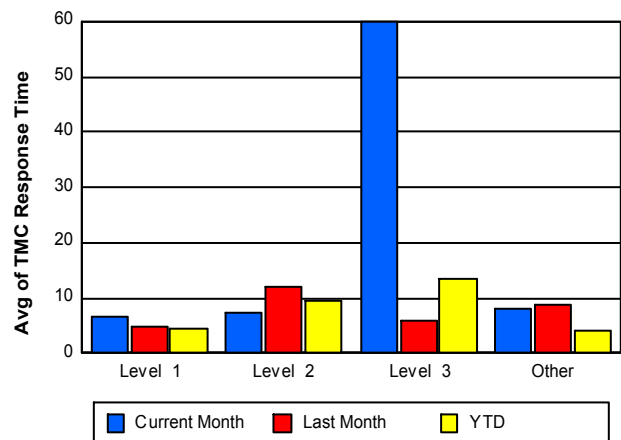
### TMC Detection Time



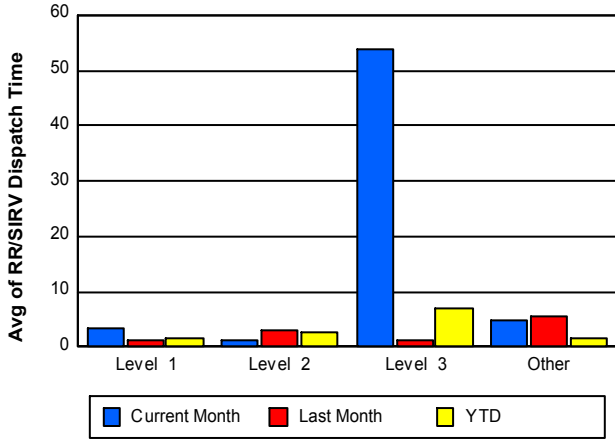
### TMC Verification Time



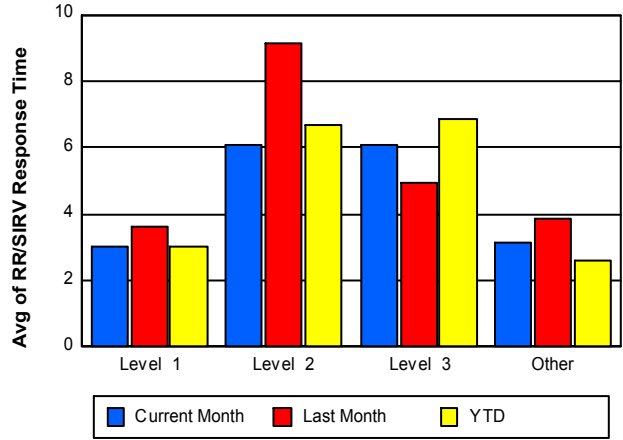
### TMC Response Time



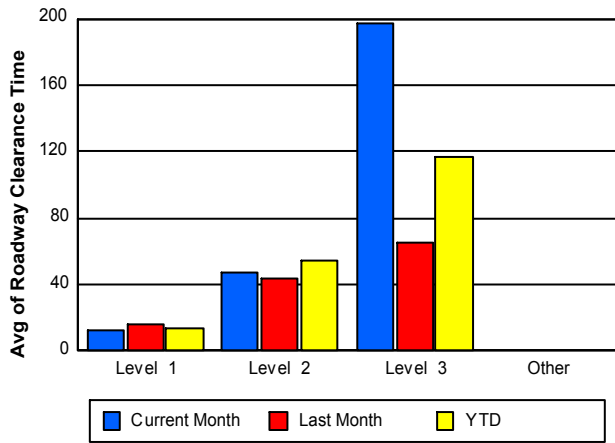
## Road Ranger / SIRV Dispatch Time



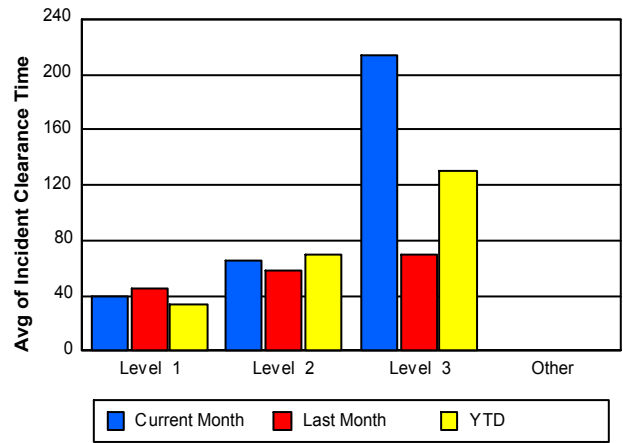
## Road Ranger / SIRV Response Time



## Roadway Clearance Time (2A)



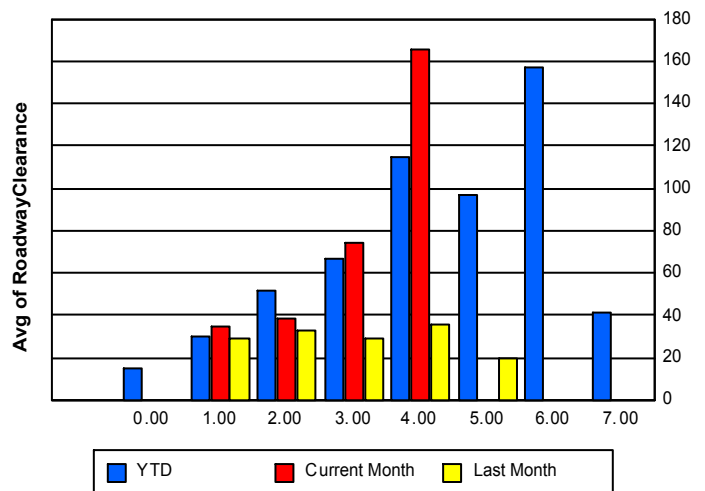
## Incident Clearance Time (3B)



## Roadway Clearance by Maximum Number of Lanes Blocked

	Current Month	Last Month	YTD
	0.00	0.00	
0			14.70
1	34.90	28.69	29.69
2	38.02	33.08	51.10
3	74.55	28.63	66.80
4	165.13	35.81	114.60
5	0.00	19.07	96.77
6	0.00	0.00	157.15

## Roadway Clearance Time(2A)



	Current Month	Last Month	YTD
7	0.00	0.00	41.44

## Performance Measures by Roadway

**95**

	<u>Current Month</u>	<u>Last Month</u>	<u>YTD</u>
Number of Events	1,592	1,394	27,962
Number of Incidents	72	85	1,556
TMC Detection (min.)	0.00	0.00	0.09
TMC Verification (min.)	2.41	2.86	2.94
TMC Response (min.)	8.27	8.83	4.31
RR Dispatch Time (min.)	4.98	5.22	1.69
RR Resp. Time (min.)	3.21	3.99	2.70
Event Clearance (min.)	83.68	54.79	51.32
Roadway Clear. (min.)	42.77	29.88	39.14
Incident Clearance (min.)	65.40	52.36	56.49
# of Events w/ RR/SIRV	1,197	1,044	25,817
RR/SIRV Responses	1,197	1,044	26,001
RR/SIRV Activities	1,271	1,115	28,267

**OKEEB**

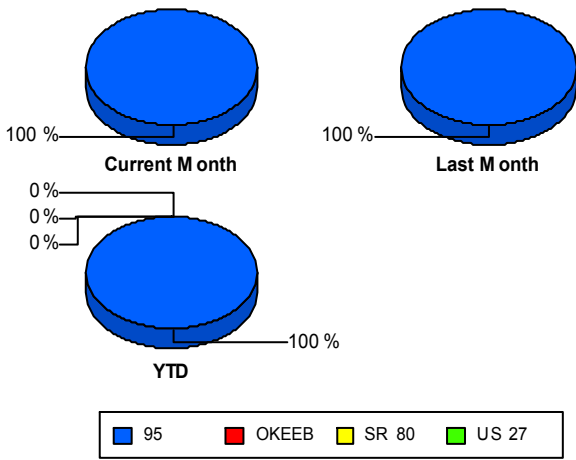
	<u>YTD</u>
Number of Events	2
Number of Incidents	2
TMC Detection (min.)	0.00
TMC Verification (min.)	12.48
TMC Response (min.)	7.78
RR Dispatch Time (min.)	4.42
RR Resp. Time (min.)	2.63
Event Clearance (min.)	54.35
Roadway Clear. (min.)	50.14
Incident Clearance (min.)	54.35
# of Events w/ RR/SIRV	2
RR/SIRV Responses	2
RR/SIRV Activities	1

**SR 80**

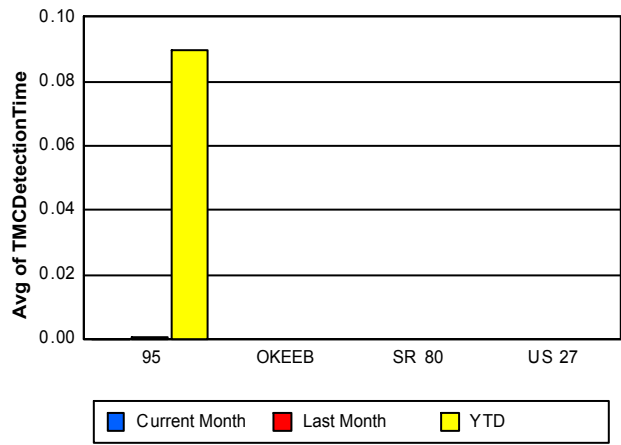
	<u>YTD</u>
Number of Events	1
Number of Incidents	1
TMC Detection (min.)	0.00
TMC Verification (min.)	40.52
TMC Response (min.)	
RR Dispatch Time (min.)	
RR Resp. Time (min.)	
Event Clearance (min.)	730.37
Roadway Clear. (min.)	712.33
Incident Clearance (min.)	730.37
# of Events w/ RR/SIRV	0
RR/SIRV Responses	0
RR/SIRV Activities	0

	<u>YTD</u>
Number of Events	<b>1</b>
Number of Incidents	<b>0</b>
TMC Detection (min.)	<b>0.00</b>
TMC Verification (min.)	
TMC Response (min.)	
RR Dispatch Time (min.)	
RR Resp. Time (min.)	
Event Clearance (min.)	<b>125.57</b>
Roadway Clear. (min.)	
Incident Clearance (min.)	
# of Events w/ RR/SIRV	<b>0</b>
RR/SIRV Responses	<b>0</b>
RR/SIRV Activities	<b>0</b>

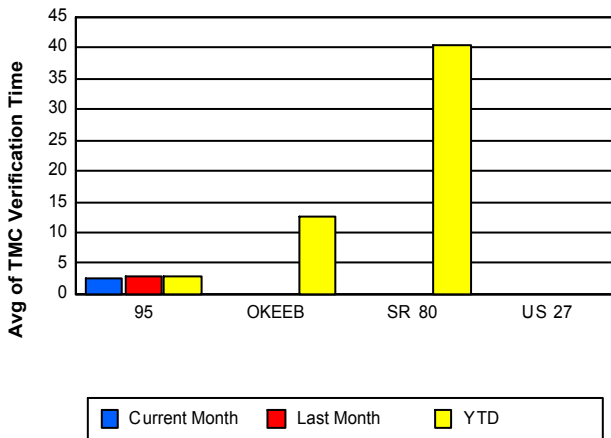
### Number of Events / Roadway



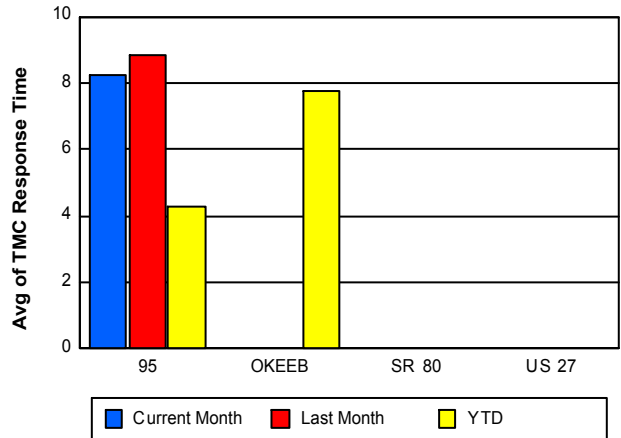
### TMC Detection Time



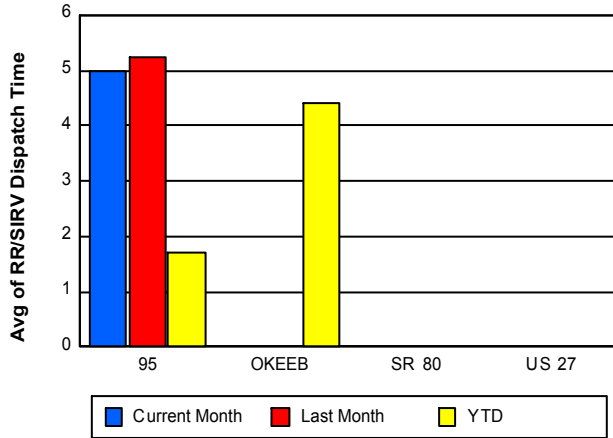
### TMC Verification Time



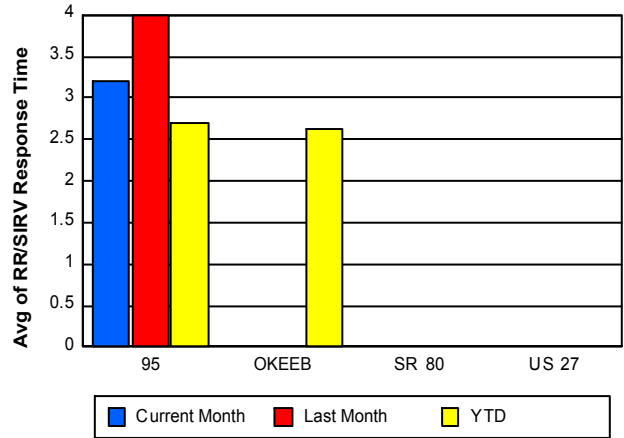
### TMC Response Time



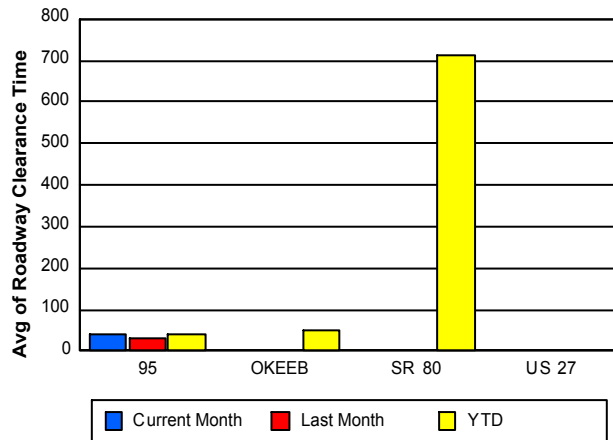
## Road Ranger / SIRV Dispatch Time



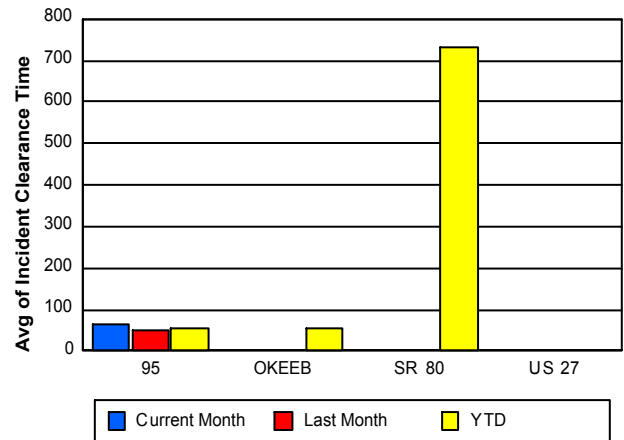
## Road Ranger / SIRV Response Time



## Roadway Clearance Time (2A)



## Incident Clearance Time (3B)



## Performance Measures by Event Type

### Abandoned Vehicle

	<u>Current Month</u>	<u>Last Month</u>	<u>YTD</u>
Number of Events	299	269	5,019
Number of Incidents	0	2	20
TMC Detection (min.)	0.00	0.00	0.04
TMC Verification (min.)	0.51	0.45	0.54
TMC Response (min.)	19.20	19.50	3.84
RR Dispatch Time (min.)	17.92	20.51	3.49
RR Response Time (min.)	1.20	0.97	0.68
Event Clearance (min.)	332.31	181.52	187.67
Roadway Clearance (min.)		14.56	77.41
Incident Clearance (min.)		16.29	35.86
# of Events w/ RR/SIRV	211	213	4,143
RR/SIRV Assists	211	213	4,158
RR/SIRV Activities	217	222	4,284

### Accident

	<u>Current Month</u>	<u>Last Month</u>	<u>YTD</u>
Number of Events	96	96	2,052
Number of Incidents	46	53	981
TMC Detection (min.)	0.00	0.00	0.12
TMC Verification (min.)	2.89	3.75	4.88
TMC Response (min.)	11.67	6.87	7.29
RR Dispatch Time (min.)	7.03	1.91	2.24
RR Response Time (min.)	4.52	4.96	5.13
Event Clearance (min.)	62.55	52.02	58.90
Roadway Clearance (min.)	52.67	28.25	46.28
Incident Clearance (min.)	83.55	58.43	69.91
# of Events w/ RR/SIRV	83	84	1,914
RR/SIRV Assists	83	84	1,993
RR/SIRV Activities	100	107	2,488

### Congestion

	<u>Current Month</u>	<u>YTD</u>
Number of Events	3	40
Number of Incidents	0	0
TMC Detection (min.)	0.00	13.44
TMC Verification (min.)	0.00	13.98
TMC Response (min.)		14.71
RR Dispatch Time (min.)	2.68	5.44
RR Response Time (min.)		8.68
Event Clearance (min.)	27.57	50.54
Roadway Clearance (min.)		
Incident Clearance (min.)		
# of Events w/ RR/SIRV	1	10
RR/SIRV Assists	1	10
RR/SIRV Activities	0	8

## Debris on Roadway

	<u>Current Month</u>	<u>Last Month</u>	<u>YTD</u>
Number of Events	75	69	1,472
Number of Incidents	3	5	126
TMC Detection (min.)	0.00	0.00	0.06
TMC Verification (min.)	6.08	11.97	7.05
TMC Response (min.)	6.07	11.96	7.35
RR Dispatch Time (min.)	1.35	1.46	1.66
RR Response Time (min.)	4.72	10.49	5.69
Event Clearance (min.)	8.80	16.72	12.04
Roadway Clearance (min.)	8.19	46.81	17.09
Incident Clearance (min.)	12.46	50.70	20.50
# of Events w/ RR/SIRV	75	69	1,456
RR/SIRV Assists	75	69	1,467
RR/SIRV Activities	77	79	1,563

## Disabled Vehicle

	<u>Current Month</u>	<u>Last Month</u>	<u>YTD</u>
Number of Events	875	743	18,324
Number of Incidents	13	18	324
TMC Detection (min.)	0.00	0.00	0.07
TMC Verification (min.)	3.30	3.52	3.07
TMC Response (min.)	5.22	5.21	3.74
RR Dispatch Time (min.)	1.83	1.20	1.19
RR Response Time (min.)	3.45	4.08	2.59
Event Clearance (min.)	23.84	23.79	17.40
Roadway Clearance (min.)	29.78	27.52	24.45
Incident Clearance (min.)	37.46	41.78	33.47
# of Events w/ RR/SIRV	786	644	17,799
RR/SIRV Assists	786	644	17,866
RR/SIRV Activities	855	681	19,439

## Emergency Vehicles

	<u>Current Month</u>	<u>Last Month</u>	<u>YTD</u>
Number of Events	2	2	12
Number of Incidents	1	2	9
TMC Detection (min.)	0.00	0.00	1.67
TMC Verification (min.)	0.68	2.34	2.37
TMC Response (min.)	0.67	2.33	1.22
RR Dispatch Time (min.)	0.52	0.45	0.76
RR Response Time (min.)	0.15	1.88	0.46
Event Clearance (min.)	9.97	73.42	30.85
Roadway Clearance (min.)	3.28	70.63	29.49
Incident Clearance (min.)	11.43	73.42	36.58
# of Events w/ RR/SIRV	2	2	12
RR/SIRV Assists	2	2	12
RR/SIRV Activities	2	3	13

## Off Ramp Backup

	<u>YTD</u>
Number of Events	6
Number of Incidents	0
TMC Detection (min.)	0.00
TMC Verification (min.)	0.00
TMC Response (min.)	
RR Dispatch Time (min.)	
RR Response Time (min.)	
Event Clearance (min.)	45.29
Roadway Clearance (min.)	
Incident Clearance (min.)	
# of Events w/ RR/SIRV	0
RR/SIRV Assists	0
RR/SIRV Activities	0

## Other

	<u>Current Month</u>	<u>Last Month</u>	<u>YTD</u>
Number of Events	160	153	653
Number of Incidents	1	0	8
TMC Detection (min.)	0.00	0.00	0.01
TMC Verification (min.)	0.21	0.35	2.76
TMC Response (min.)	5.97	10.93	12.90
RR Dispatch Time (min.)	1.22	1.74	2.94
RR Response Time (min.)	5.38	9.28	9.46
Event Clearance (min.)	30.08	15.01	22.25
Roadway Clearance (min.)	1.75		15.40
Incident Clearance (min.)	13.32		20.08
# of Events w/ RR/SIRV	28	25	261
RR/SIRV Assists	28	25	263
RR/SIRV Activities	8	15	213

## Pedestrian

	<u>YTD</u>
Number of Events	32
Number of Incidents	0
TMC Detection (min.)	0.04
TMC Verification (min.)	1.39
TMC Response (min.)	1.38
RR Dispatch Time (min.)	0.27
RR Response Time (min.)	1.11
Event Clearance (min.)	15.13
Roadway Clearance (min.)	
Incident Clearance (min.)	
# of Events w/ RR/SIRV	32
RR/SIRV Assists	32
RR/SIRV Activities	33

## Police Activity

	<u>Current Month</u>	<u>Last Month</u>	<u>YTD</u>
Number of Events	76	57	212
Number of Incidents	4	4	60
TMC Detection (min.)	0.00	0.00	0.07
TMC Verification (min.)	0.00	0.00	0.54
TMC Response (min.)	2.95	6.17	8.02
RR Dispatch Time (min.)	0.52	0.62	4.02
RR Response Time (min.)	2.55	5.55	3.90
Event Clearance (min.)	16.15	21.38	28.77
Roadway Clearance (min.)	34.42	26.38	40.97
Incident Clearance (min.)	40.25	31.21	56.08
# of Events w/ RR/SIRV	5	3	59
RR/SIRV Assists	5	3	65
RR/SIRV Activities	4	4	71

## Vehicle Fire

	<u>Current Month</u>	<u>Last Month</u>	<u>YTD</u>
Number of Events	4	1	32
Number of Incidents	4	1	22
TMC Detection (min.)	0.00	0.00	0.00
TMC Verification (min.)	0.00	0.00	2.53
TMC Response (min.)	4.68	0.00	4.35
RR Dispatch Time (min.)	0.90	0.00	1.31
RR Response Time (min.)	3.79	0.00	3.04
Event Clearance (min.)	38.89	44.48	311.86
Roadway Clearance (min.)	25.49	37.20	46.00
Incident Clearance (min.)	38.89	44.48	61.11
# of Events w/ RR/SIRV	4	1	27
RR/SIRV Assists	4	1	27
RR/SIRV Activities	6	1	35

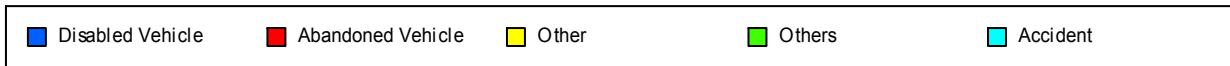
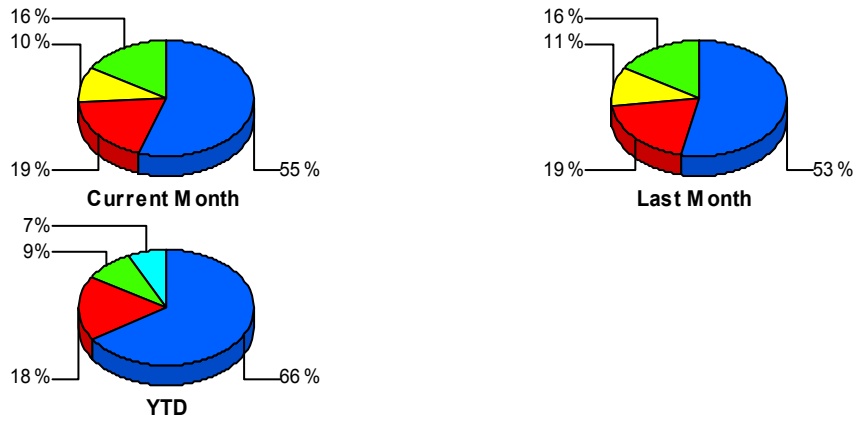
## Visibility

	<u>YTD</u>
Number of Events	7
Number of Incidents	5
TMC Detection (min.)	0.00
TMC Verification (min.)	1.26
TMC Response (min.)	17.63
RR Dispatch Time (min.)	7.16
RR Response Time (min.)	10.47
Event Clearance (min.)	37.35
Roadway Clearance (min.)	29.89
Incident Clearance (min.)	35.95
# of Events w/ RR/SIRV	5
RR/SIRV Assists	5
RR/SIRV Activities	7

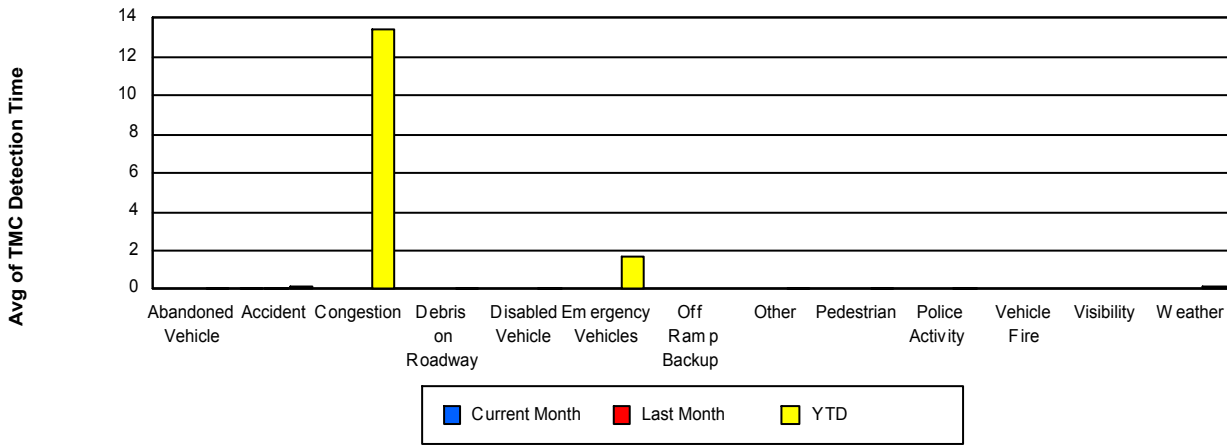
## Weather

	<b><u>YTD</u></b>
Number of Events	7
Number of Incidents	4
TMC Detection (min.)	<b>0.09</b>
TMC Verification (min.)	<b>8.35</b>
TMC Response (min.)	<b>10.26</b>
RR Dispatch Time (min.)	<b>2.93</b>
RR Response Time (min.)	<b>7.33</b>
Event Clearance (min.)	<b>153.13</b>
Roadway Clearance (min.)	<b>170.23</b>
Incident Clearance (min.)	<b>159.05</b>
# of Events w/ RR/SIRV	6
RR/SIRV Assists	10
RR/SIRV Activities	15

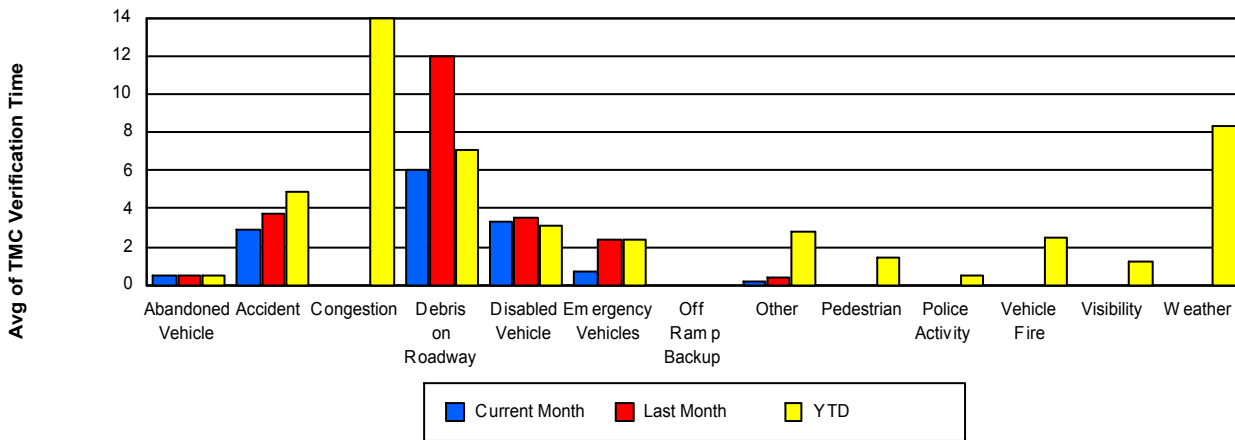
## Number of Events / Event Type



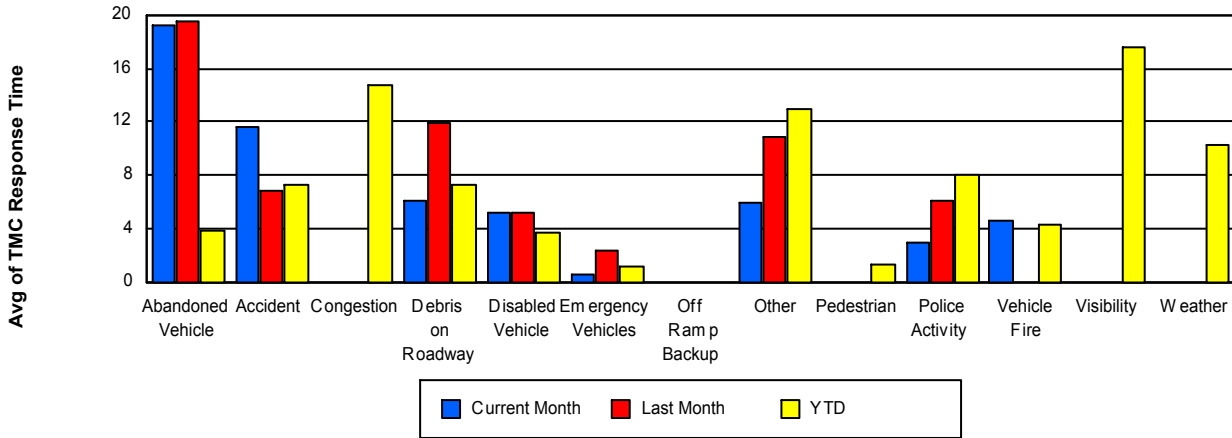
## TMC Detection Time



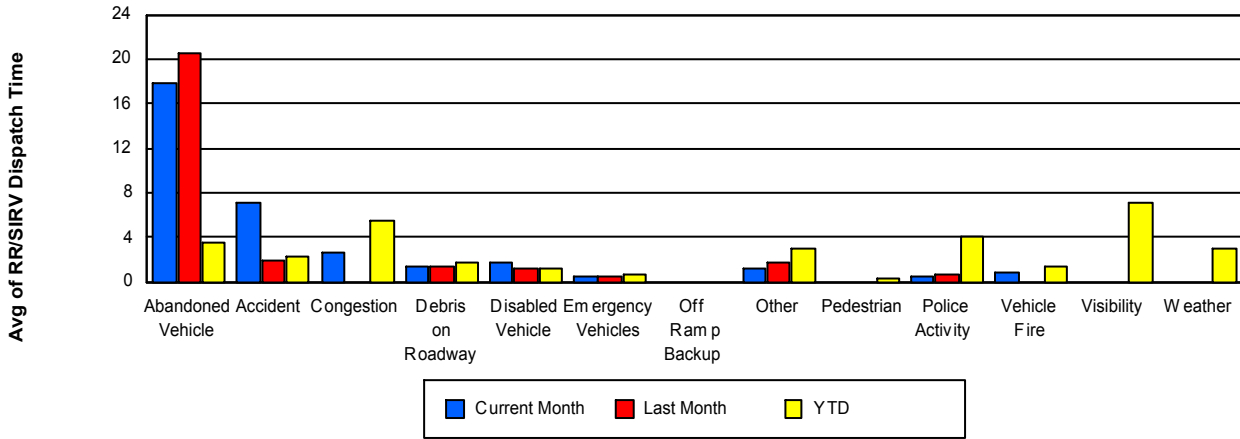
## TMC Verification Time



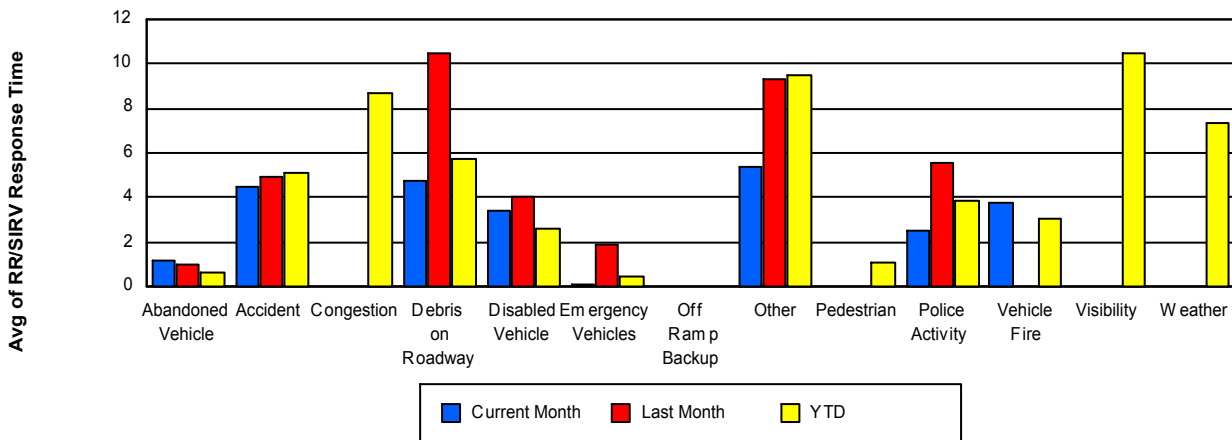
## TMC Response Time



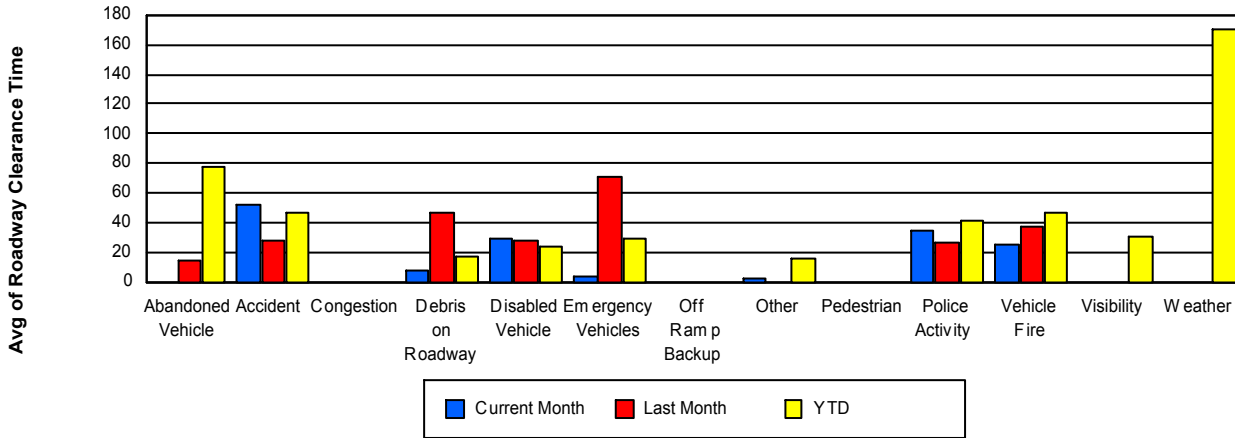
## Road Ranger / SIRV Dispatch Time



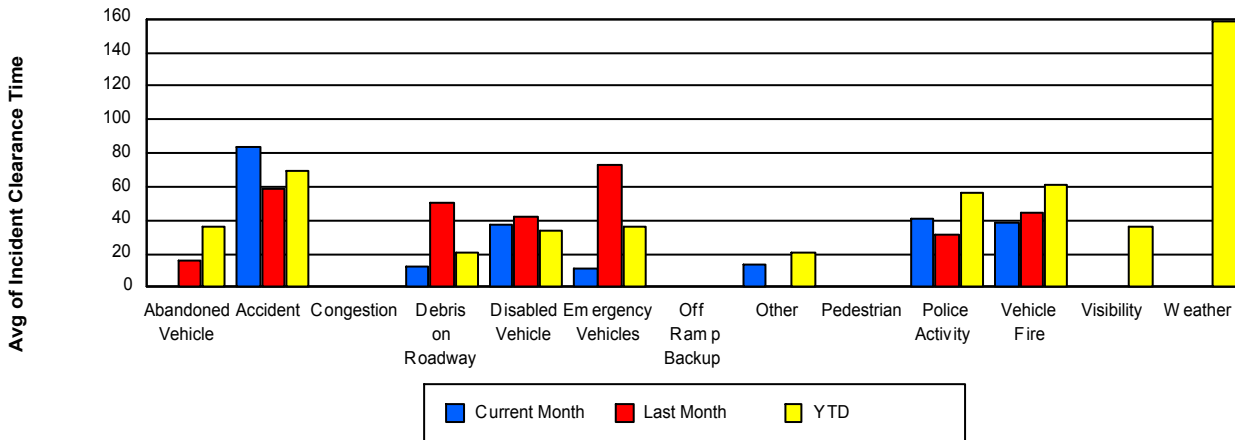
## Road Ranger / SIRV Response Time



## Roadway Clearance Time (2A)



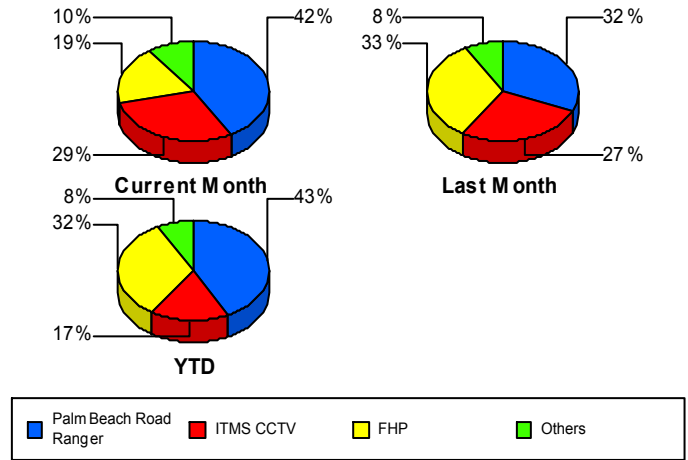
## Incident Clearance Time (3B)



## Incident Detection Methods

	Current Month	Last Month	YTD
Broward CCTV	0	0	4
Broward Road Ranger	1	0	10
Broward TMC	0	0	1
Construction CEI	0	0	6
District 4	3	1	57
FDOT Maintenance	2	1	6
FHP	14	28	505
ITMS	0	2	11
ITMS CCTV	21	23	264
Media	0	0	1
Motorist	0	2	22
Palm Beach Road Rang	30	27	664
Road Watcher	0	0	2
SmarTraveler (511)	1	1	6
<b>Total</b>	<b>72</b>	<b>85</b>	<b>1,559</b>

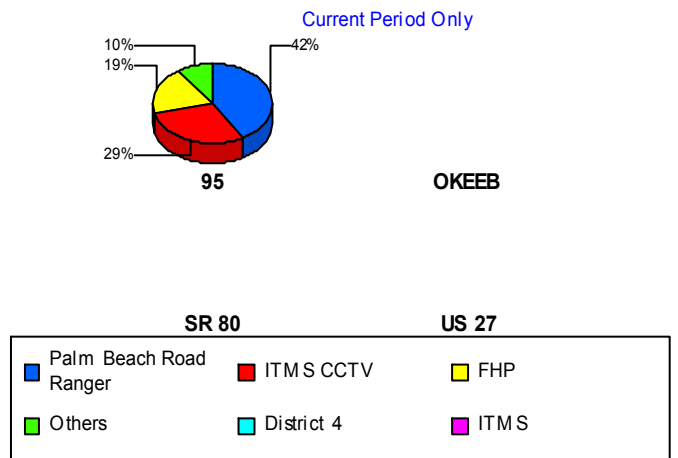
### Total Incidents by Detection Method



### Incident Detection Methods by Roadway

		Current Month	Last Month	YTD
95	Broward CCTV	0	0	4
	Broward Road Ranger	1	0	10
	Broward TMC	0	0	1
	Construction CEI	0	0	6
	District 4	3	1	56
	FDOT Maintenance	2	1	6
	FHP	14	28	503
	ITMS	0	2	11
	ITMS CCTV	21	23	264
	Media	0	0	1
	Motorist	0	2	22
	Palm Beach Road Rang	30	27	664

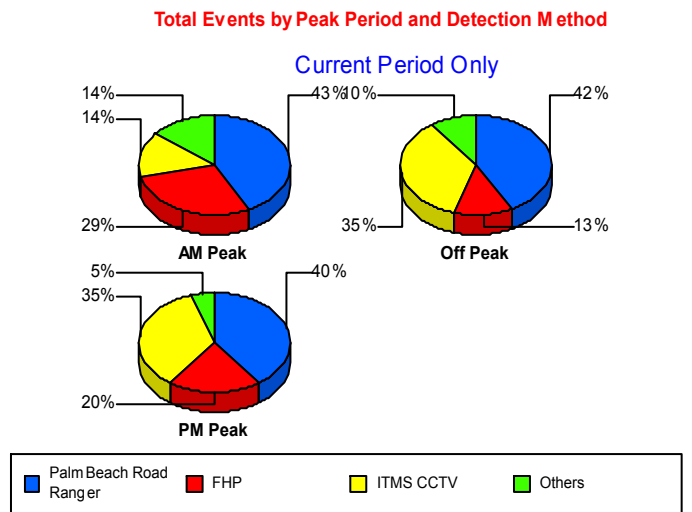
### Total Events by Roadway and Detection Method



		Current Month	Last Month	YTD
95	Road Watcher	0	0	2
	SmarTraveler (511)	1	1	6
	<b>Total</b>	<b>72</b>	<b>85</b>	<b>1,556</b>
OKEEB	FHP	0	0	2
	<b>Total</b>	<b>0</b>	<b>0</b>	<b>2</b>
SR 80	District 4	0	0	1
	<b>Total</b>	<b>0</b>	<b>0</b>	<b>1</b>
<b>Total</b>		<b>72</b>	<b>85</b>	<b>1,559</b>

**Incident Detection Methods by Peak Period**

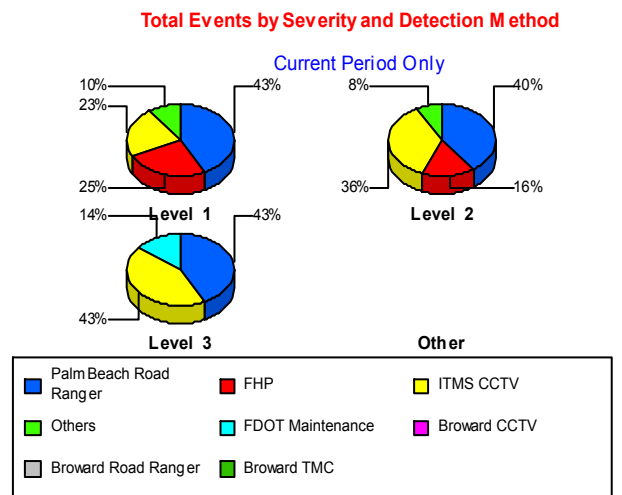
		Current Month	Last Month	YTD
AM Peak	Broward CCTV	0	0	1
	Broward Road Ranger	0	0	3
	Broward TMC	0	0	1
	Construction CEI	0	0	1
	District 4	1	0	24
	FDOT Maintenance	1	0	2
	FHP	6	9	139
	ITMS	0	1	3
	ITMS CCTV	3	3	56
	Media	0	0	1
	Motorist	0	0	6
	Palm Beach Road Rang	9	6	164
	SmarTraveler (511)	1	0	2
	<b>Total</b>	<b>21</b>	<b>19</b>	<b>403</b>
Off Peak	Broward CCTV	0	0	1
	Broward Road Ranger	0	0	3
	Construction CEI	0	0	5
	District 4	2	1	26
	FDOT Maintenance	1	1	4
	FHP	4	8	268
	ITMS	0	1	4



		Current Month	Last Month	YTD
Off Peak	ITMS CCTV	11	13	131
	Motorist	0	1	11
	Palm Beach Road Rang	13	6	338
	Road Watcher	0	0	2
	SmarTraveler (511)	0	1	2
	Total	31	32	795
PM Peak	Broward CCTV	0	0	2
	Broward Road Ranger	1	0	4
	District 4	0	0	7
	FHP	4	11	98
	ITMS	0	0	4
	ITMS CCTV	7	7	77
	Motorist	0	1	5
	Palm Beach Road Rang	8	15	162
	SmarTraveler (511)	0	0	2
	Total	20	34	361
Total	72	85	1,559	

### Incident Detection Methods by Severity

		Current Month	Last Month	YTD
Level 1	Broward CCTV	0	0	4
	Broward Road Ranger	1	0	8
	Broward TMC	0	0	1
	Construction CEI	0	0	2
	District 4	2	1	38
	FDOT Maintenance	1	1	3
	FHP	10	10	194
	ITMS	0	1	5
	ITMS CCTV	9	10	123
	Media	0	0	1
	Motorist	0	2	12
	Palm Beach Road Rang	17	23	432



		Current Month	Last Month	YTD
Level 1	SmarTraveler (511)	0	0	3
	Total	40	48	826
Level 2	Broward Road Ranger	0	0	2
	Construction CEI	0	0	2
	District 4	1	0	16
	FDOT Maintenance	0	0	1
	FHP	4	16	247
	ITMS	0	1	5
	ITMS CCTV	9	9	95
	Motorist	0	0	10
	Palm Beach Road Rang	10	3	184
	Road Watcher	0	0	1
	SmarTraveler (511)	1	1	3
	Total	25	30	566
	Level 3	Construction CEI	0	0
District 4		0	0	3
FDOT Maintenance		1	0	2
FHP		0	2	64
ITMS		0	0	1
ITMS CCTV		3	4	46
Palm Beach Road Rang		3	1	48
Road Watcher		0	0	1
Total		7	7	167
Total		72	85	1,559

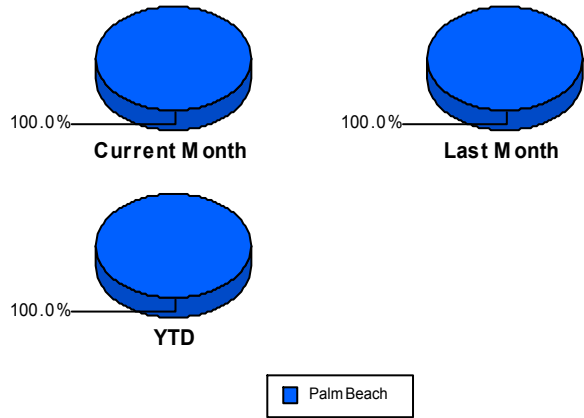
# Road Ranger / SIRV Performance Measures

## Road Ranger / SIRV Performance By County

Values presented are:  
 - Total Events with a RR/SIRV Response  
 - Total RR/SIRV Responses,  
 - Total Activities Performed

	Current Mo	Last Month	YTD
Palm Beach	1,270	1,108	27,487
	1,310	1,148	28,504
	1,389	1,208	30,376

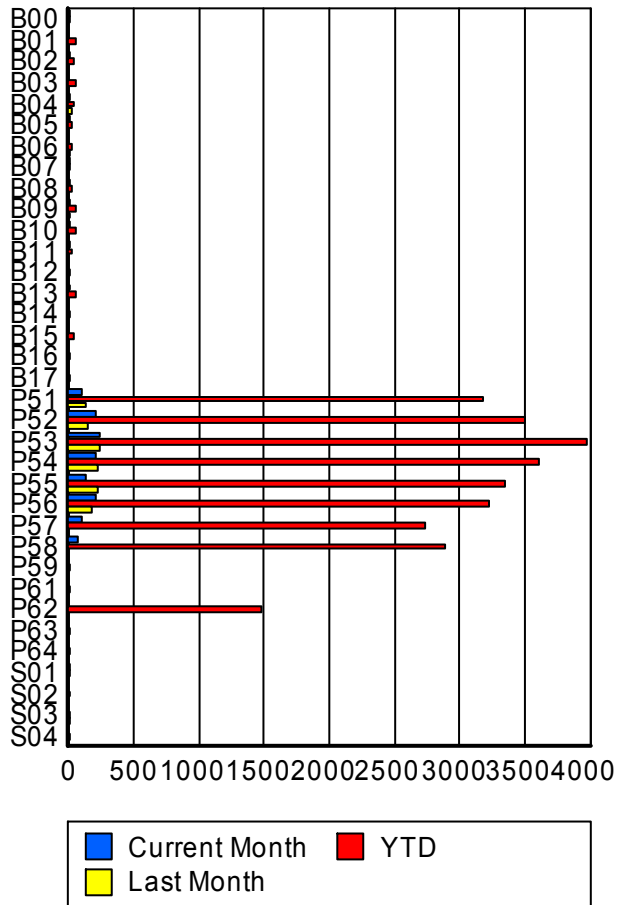
RR/SIRV Responses per County



## Road Ranger / SIRV Performance By Truck

	Current Mo	Last Month	YTD
B00	1	0	14
	1	0	14
	1	0	15
B01	0	0	52
	0	0	52
	0	0	55
B02	1	0	40
	1	0	42
	1	0	44
B03	0	0	49
	0	0	51
	0	0	53
B04	10	17	42
	10	17	42
	10	17	43
B05	8	0	27
	8	0	27
	8	0	28
B06	0	1	23
	0	1	23
	0	1	26
B07	3	0	7
	3	0	7
	3	0	7
B08	1	0	26
	1	0	27
	1	0	27

RR/SIRV Responses per Truck



	Current Mo	Last Month	YTD
B09	10	2	47
	10	2	48
	10	3	51
B10	4	0	59
	4	0	59
	4	0	67
B11	4	0	22
	4	0	22
	4	0	23
B12	0	0	6
	0	0	6
	0	0	6
B13	2	0	58
	2	0	58
	2	0	61
B14	0	0	9
	0	0	9
	0	0	10
B15	0	0	33
	0	0	34
	0	0	36
B16	0	0	14
	0	0	14
	0	0	15
B17	0	0	12
	0	0	12
	0	0	12
P51	102	124	3,156
	103	125	3,177
	106	134	3,382
P52	209	143	3,458
	211	146	3,494
	225	151	3,751
P53	229	240	3,950
	232	240	3,977
	252	252	4,225
P54	205	226	3,575
	205	228	3,607
	222	238	3,848
P55	131	217	3,329
	133	218	3,349
	140	229	3,566
P56	205	169	3,185
	208	170	3,217
	219	182	3,436

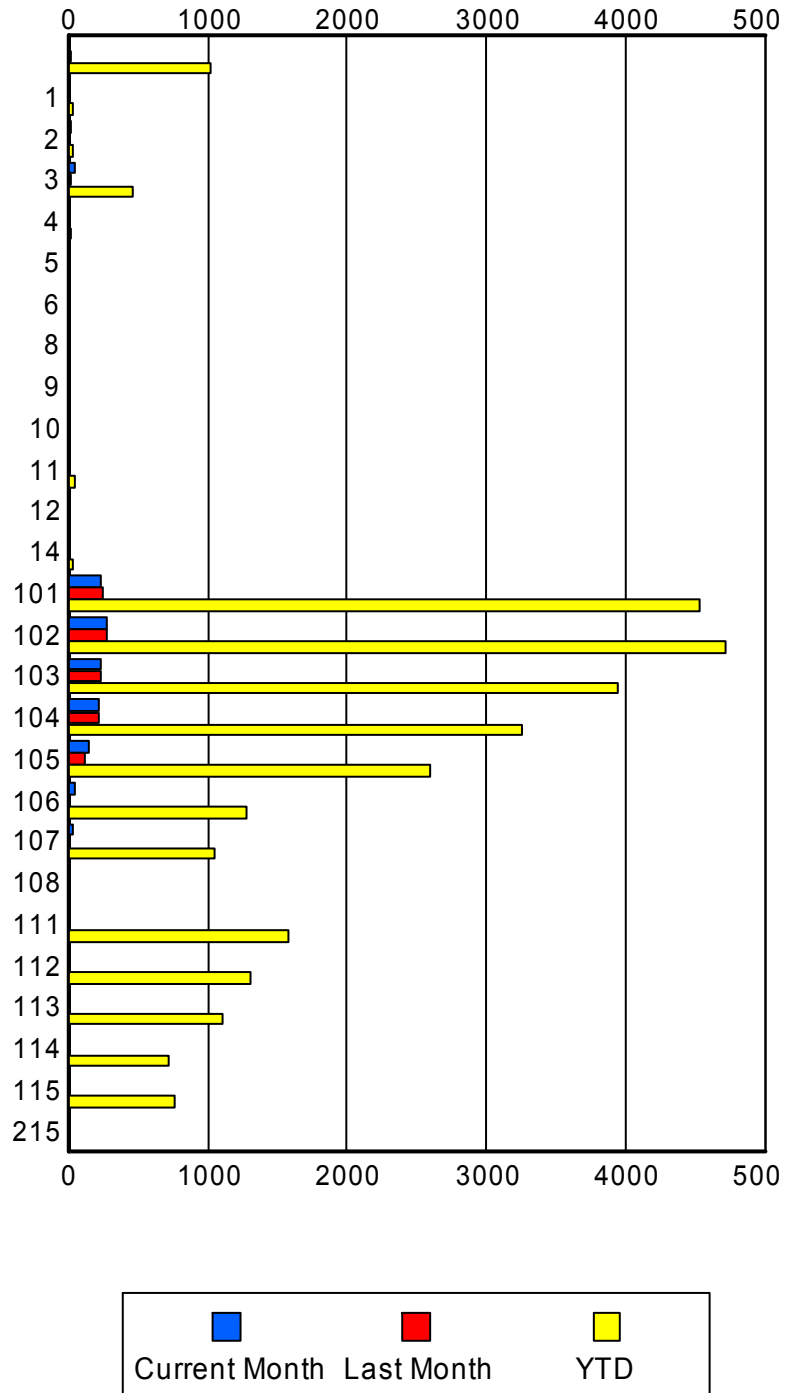
	Current Mo	Last Month	YTD
P57	99	0	2,712
	99	0	2,735
	102	0	2,937
P58	73	0	2,860
	74	0	2,888
	78	0	3,046
P59	0	0	7
	0	0	7
	0	0	7
P61	0	0	7
	0	0	7
	0	0	7
P62	0	0	1,466
	0	0	1,485
	0	0	1,578
P63	0	0	4
	0	0	4
	0	0	4
P64	0	0	3
	0	0	3
	0	0	3
S01	1	0	2
	1	0	2
	1	0	2
S02	0	0	3
	0	0	3
	0	0	3
S03	0	1	1
	0	1	1
	0	1	1
S04	0	0	1
	0	0	1
	0	0	1

### Road Ranger / SIRV Performance By Beat

	Current Mo	Last Month	YTD
	3	15	1,019
	3	15	1,028
	3	16	1,085
1	11	0	32
	11	0	32
	13	0	35
2	16	0	26
	17	0	27
	17	0	27
3	43	20	453
	43	20	463
	43	21	491
4	6	0	15
	6	0	15
	7	0	18
5	0	0	2
	0	0	2
	0	0	2
6	0	0	2
	0	0	2
	0	0	2
8	0	0	1
	0	0	1
	0	0	1
9	0	0	1
	0	0	1
	0	0	1
10	0	0	3
	0	0	3
	0	0	3
11	0	0	49
	0	0	50
	0	0	52
12	0	0	2
	0	0	2
	0	0	2
14	8	0	26
	9	0	28
	14	0	35
101	238	242	4,486
	240	242	4,525
	259	252	4,804
102	282	283	4,680
	284	284	4,715
	302	295	5,052

Values presented are:  
 - Total Events with a RR/SIRV Response  
 - Total RR/SIRV Responses,  
 - Total Activities Performed

### RR/SIRV Responses per Beat



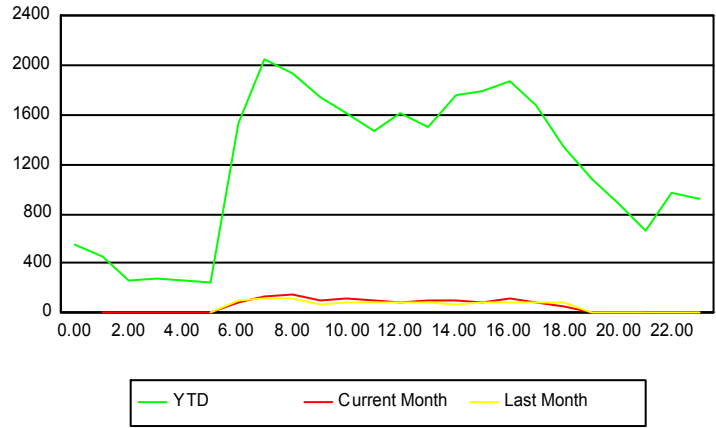
	Current Mo	Last Month	YTD
103	235 238 248	229 231 244	3,909 3,938 4,215
104	220 221 232	218 222 235	3,232 3,260 3,485
105	149 150 155	124 125 134	2,568 2,598 2,757
106	48 50 57	0 0 0	1,263 1,276 1,357
107	38 38 39	0 0 0	1,043 1,055 1,106
108	0 0 0	0 0 0	1 1 1
111	0 0 0	0 0 0	1,566 1,581 1,680
112	0 0 0	0 0 0	1,295 1,308 1,389
113	0 0 0	0 0 0	1,088 1,109 1,180
114	0 0 0	9 9 11	719 725 769
115	0 0 0	0 0 0	750 757 825
215	0 0 0	0 0 0	2 2 2

## Road Ranger / SIRV Performance By Time of Day

Values presented are:  
 - Total Events with a RR/SIRV Response  
 - Total RR/SIRV Responses,  
 - Total Activities Performed

	Current Mo	Last Month	YTD
12AM-1AM	0	0	533
	0	0	554
	0	0	587
1AM-2AM	2	0	433
	2	0	457
	4	0	500
2AM-3AM	2	0	251
	2	0	264
	3	0	277
3AM-4AM	1	0	258
	1	0	278
	1	0	302
4AM-5AM	2	0	234
	2	0	259
	2	0	280
5AM-6AM	4	3	221
	4	4	252
	4	4	270
6AM-7AM	77	95	1,495
	77	101	1,539
	80	106	1,642
7AM-8AM	128	109	1,992
	131	114	2,045
	135	120	2,168
8AM-9AM	132	113	1,874
	142	114	1,946
	150	118	2,071
9AM-10AM	100	69	1,678
	104	70	1,740
	111	73	1,872
10AM-11AM	113	87	1,558
	118	88	1,612
	121	95	1,723
11AM-12PM	95	79	1,422
	98	84	1,476
	101	91	1,570
12PM-1PM	81	81	1,549
	86	85	1,623
	94	87	1,735

## Number of Responses / Hour of the Day



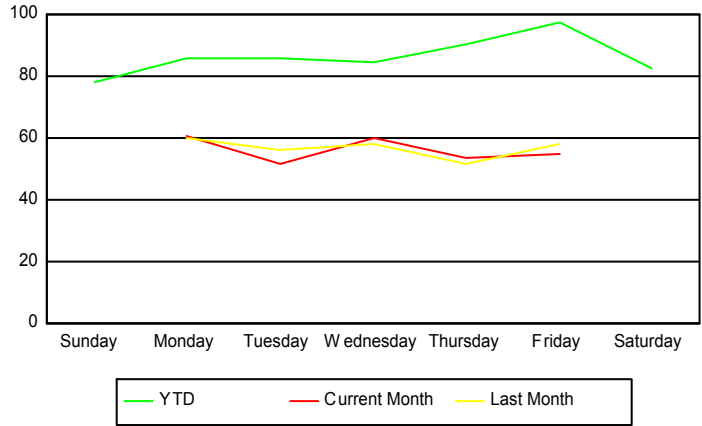
	Current Mo	Last Month	YTD
1PM-2PM	96	76	1,435
	98	80	1,504
	104	85	1,618
2PM-3PM	92	65	1,714
	96	66	1,754
	103	68	1,877
3PM-4PM	90	79	1,743
	90	82	1,786
	95	83	1,885
4PM-5PM	112	84	1,827
	114	87	1,870
	128	91	2,002
5PM-6PM	81	83	1,634
	82	88	1,687
	87	95	1,789
6PM-7PM	58	79	1,297
	59	79	1,340
	62	86	1,414
7PM-8PM	2	1	1,050
	2	1	1,088
	2	1	1,142
8PM-9PM	0	0	852
	0	0	884
	0	0	936
9PM-10PM	2	1	624
	2	1	657
	2	1	692
10PM-11PM	0	2	936
	0	2	974
	0	2	1,041
11PM-12AM	0	2	877
	0	2	915
	0	2	983

## Road Ranger / SIRV Performance By Day of Week

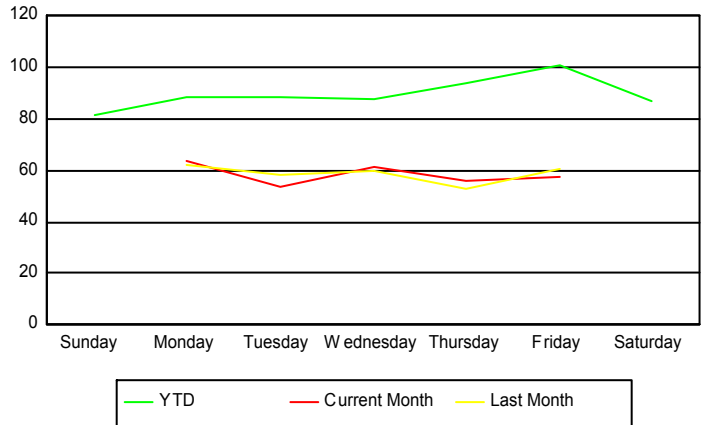
Values presented are:  
 - Total Events with a RR/SIRV Response  
 - Total RR/SIRV Responses,  
 - Total Activities Performed

	Current Mo	Last Month	YTD
Sunday	0	0	2,676
	0	0	2,793
	0	0	3,006
Monday	298	239	4,247
	310	247	4,380
	323	253	4,621
Tuesday	258	220	4,302
	264	228	4,446
	272	238	4,686
Wednesday	297	227	4,288
	300	234	4,415
	325	245	4,705
Thursday	208	197	4,408
	217	203	4,566
	229	218	4,880
Friday	209	226	4,746
	219	236	4,909
	240	254	5,291
Saturday	0	0	2,857
	0	0	2,995
	0	0	3,187

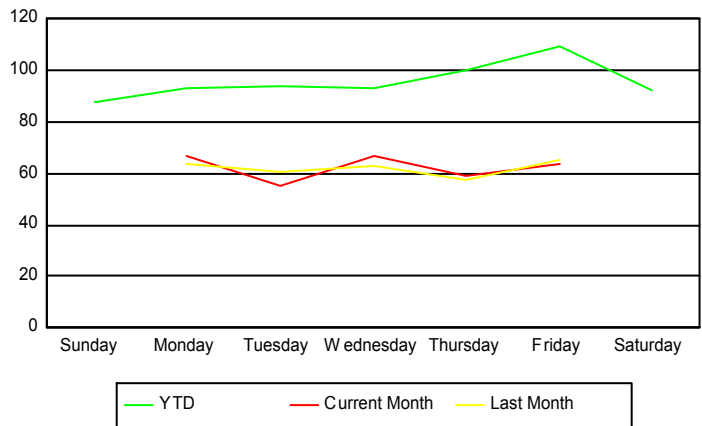
### Avg # of events with a RR/SIRV Response per Day of the Week



### Avg # of RR/SIRV Responses per Day of the Week



### Avg # of RR/SIRV Activities Performed per Day of the Week



### Road Ranger/ SIRV Responses per Time of Day and Day of Week

