



Monthly Performance Measures Report

Palm Beach County



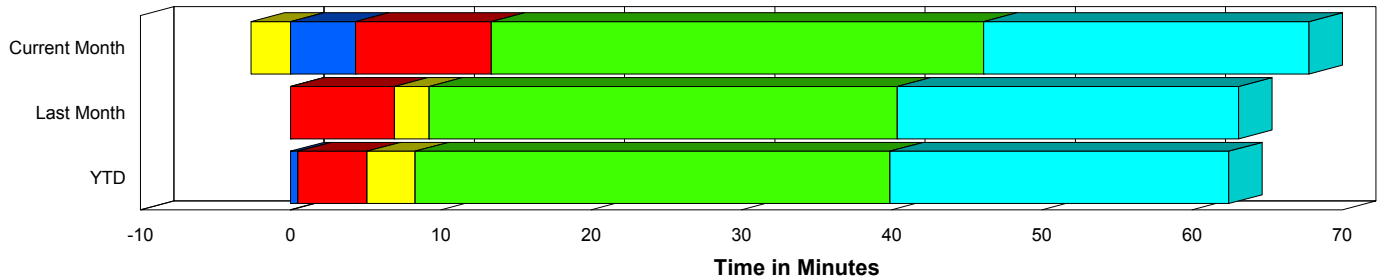
Created on:
January 04, 2010
9:00 am

Period From Dec 1, 2009 to Dec 31, 2009

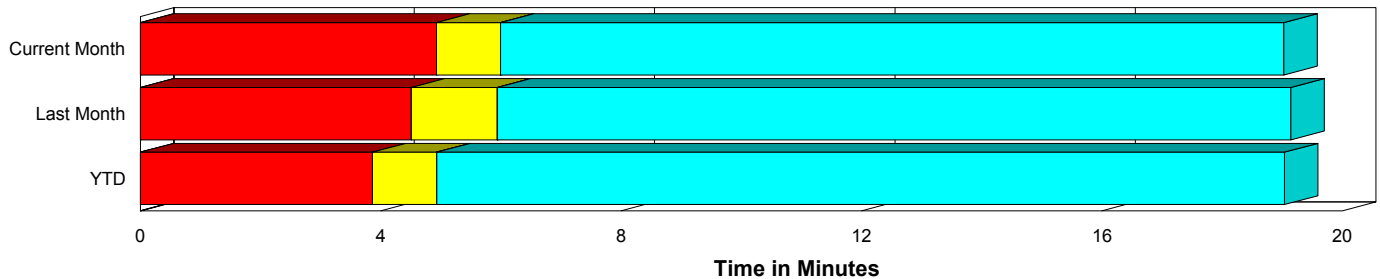
Performance Measures Summary

	Traffic Events (No Lanes Blocked)			Incidents (Lanes Blocked)		
	<u>This Month</u>	<u>Last Month</u>	<u>YTD</u>	<u>This Month</u>	<u>Last Month</u>	<u>YTD</u>
Number of Events	1,900	1,830	17,722	125	115	1,166
TMC Detection (min.)	0.00	0.00	0.00	4.31	0.00	0.49
TMC Verification (min.)	4.93	4.51	3.86	9.05	6.91	4.60
TMC Response (min.)	6.22	6.19	5.44	6.79	9.18	8.54
RR Dispatch Time (min.)	1.91	1.85	1.71	1.39	1.70	3.20
RR Response Time (min.)	4.41	4.42	3.81	5.40	7.57	5.33
Roadway Clearance (min.)				43.48	42.13	47.07
Event Clearance (min.)	19.25	19.39	19.54	65.02	64.55	69.01
# of Events w/ RR/SIRV	1,856	1,784	15,917	121	114	976
RR/SIRV Responses	1,856	1,784	15,917	121	114	976
RR/SIRV Activities	2,027	1,911	17,282	156	149	1,373

Incident Clearance Time-Line



Traffic Event (Non-Lane Blockage) Time-Line



■ Avg. TMC Detection Time	■ Avg. Time from TMC Response to Roadway Clearance*
■ Avg. Time from TMC Detection to TMC Verification	■ Avg. Time from Roadway Clearance to Incident/Event Clearance**
■ Avg. Time from TMC Verification to TMC Response	

* Roadway clearance equals all travel lanes open

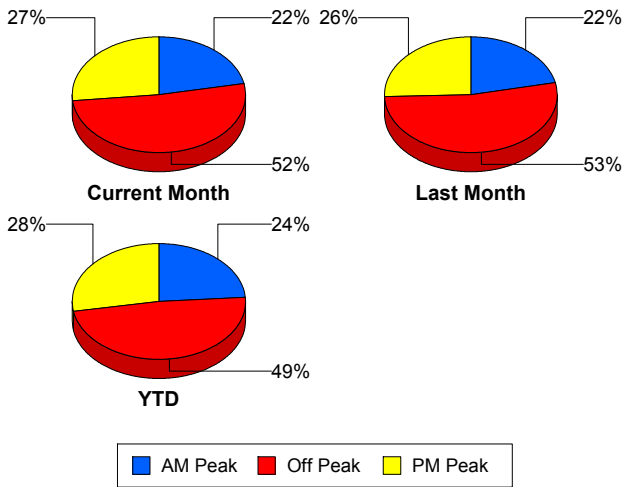
** Incident clearance equals time when last responder has left the scene

Performance Measures by Peak Period

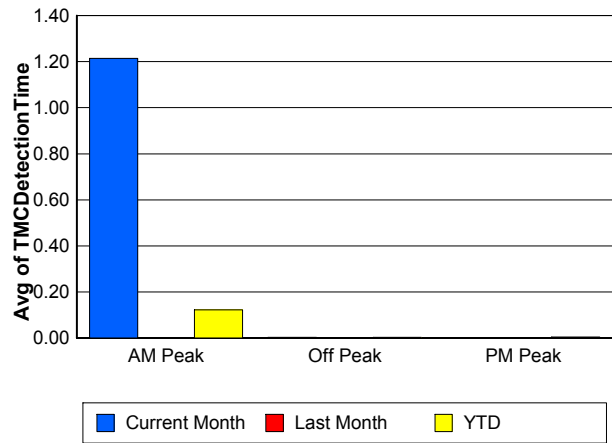
Note: AM peak period is defined as 6am to 10am and PM peak period is defined as 3pm to 7pm.

	AM Peak			Off Peak			PM Peak		
	<u>Current Month</u>	<u>Last Month</u>	<u>YTD</u>	<u>Current Month</u>	<u>Last Month</u>	<u>YTD</u>	<u>Current Month</u>	<u>Last Month</u>	<u>YTD</u>
Number of Events	444	423	4,498	1,043	1,023	9,164	538	499	5,226
Number of Incidents	22	37	325	66	61	558	37	17	283
TMC Detection (min.)	1.21	0.00	0.12	0.00	0.00	0.00	0.00	0.00	0.00
TMC Verification (min.)	5.28	3.37	3.36	4.93	4.72	3.70	5.58	5.61	4.73
TMC Response (min.)	5.58	5.20	4.72	6.38	6.75	6.17	6.56	6.56	5.54
RR Dispatch Time (min.)	1.33	1.29	1.26	1.90	2.05	2.26	2.30	1.87	1.56
RR Response Time (min.)	4.36	3.95	3.51	4.61	4.82	4.05	4.30	4.74	4.01
Event Clearance (min.)	23.72	20.74	22.18	21.16	22.12	23.54	22.51	23.08	21.30
Roadway Clearance (min.)	63.74	31.56	40.20	40.44	40.86	47.74	36.87	69.70	53.62
Incident Clearance (min.)	88.87	55.58	67.19	56.36	55.99	66.55	66.30	114.81	75.96
# of Events w/ RR/SIRV	430	412	4,320	1,020	999	7,597	527	487	4,976
RR/SIRV Responses	430	412	4,320	1,020	999	7,597	527	487	4,976
RR/SIRV Activities	487	436	4,846	1,118	1,100	8,380	578	524	5,429

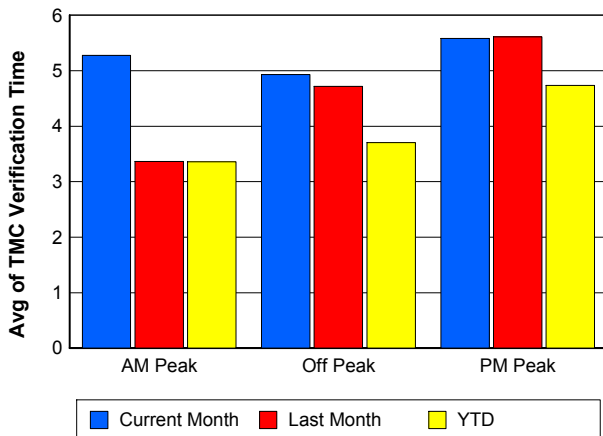
Number of Events / Peak Period



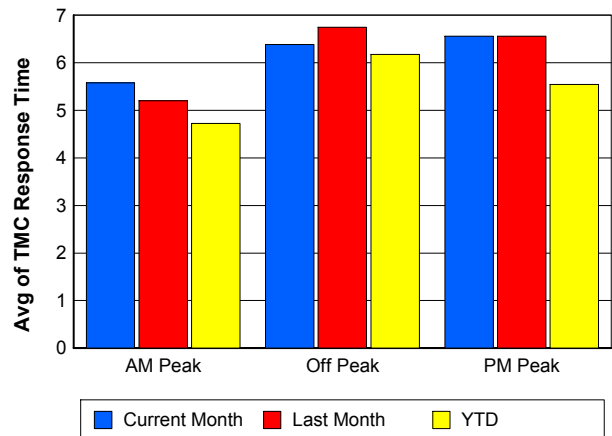
TMC Detection Time



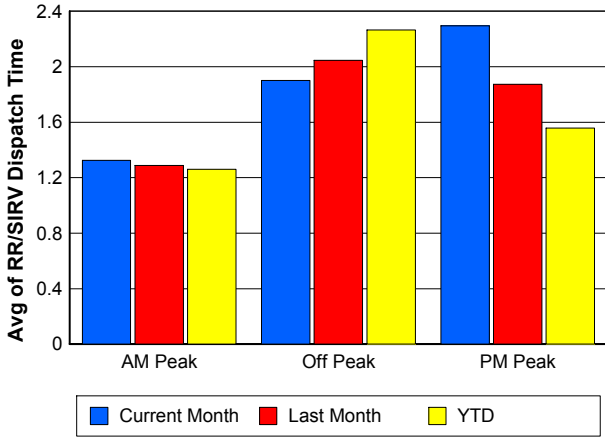
TMC Verification Time



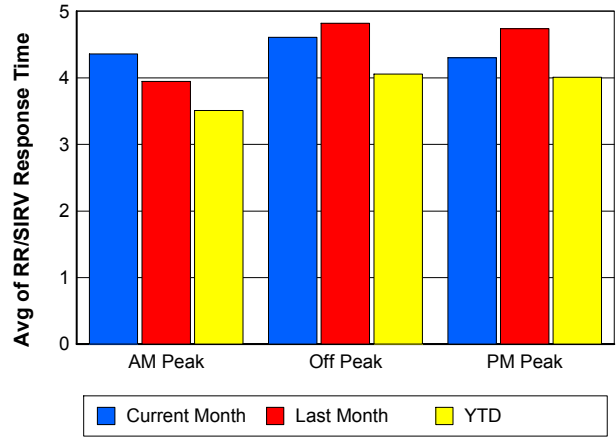
TMC Response Time



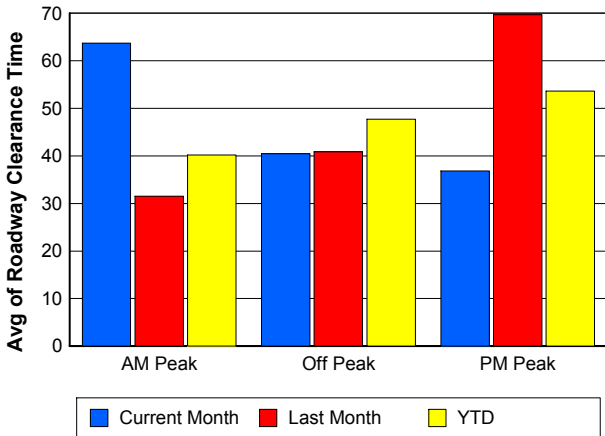
Road Ranger / SIRV Dispatch Time



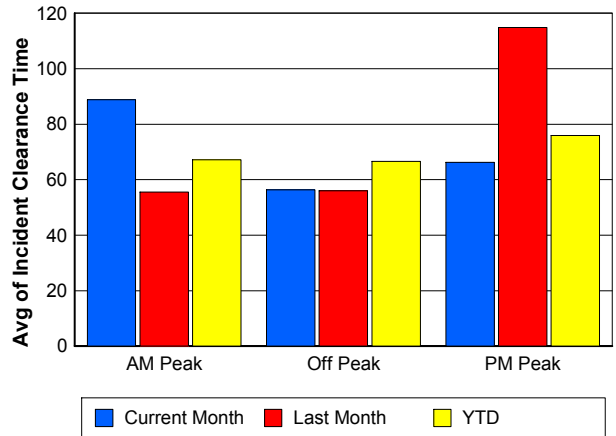
Road Ranger / SIRV Response Time



Roadway Clearance Time (2A)



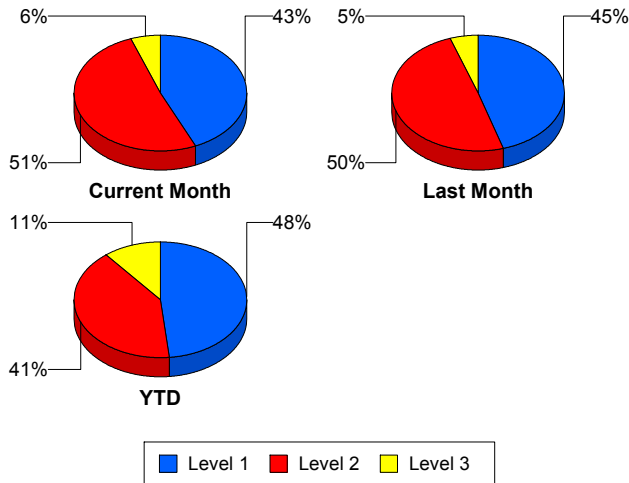
Incident Clearance Time (3B)



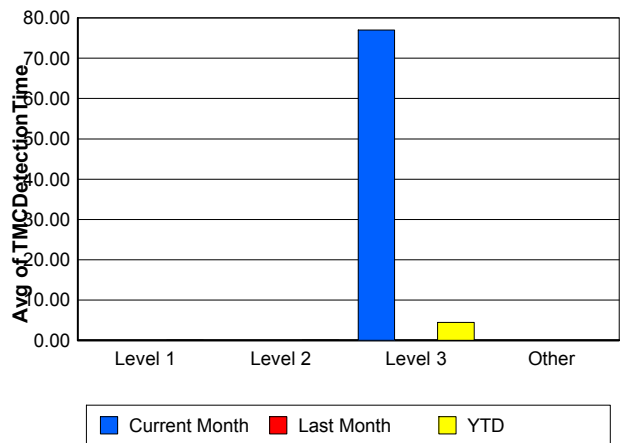
Performance Measures by Severity

	Level 1			Level 2			Level 3			Other		
	<u>This Month</u>	<u>Last Month</u>	<u>YTD</u>	<u>This Month</u>	<u>Last Month</u>	<u>YTD</u>	<u>This Month</u>	<u>Last Month</u>	<u>YTD</u>	<u>This Month</u>	<u>Last Month</u>	<u>YTD</u>
Number of Events	54	52	563	64	57	478	7	6	125	1,900	1,830	17,722
Number of Incidents	54	52	563	64	57	478	7	6	125	0	0	0
TMC Detection (min.)	0.00	0.00	0.01	0.00	0.00	0.03	77.01	0.00	4.44	0.00	0.00	0.00
TMC Verification (min.)	1.93	5.35	2.49	7.08	8.53	5.97	82.12	5.35	8.93	4.93	4.51	3.86
TMC Response (min.)	3.93	7.36	4.56	9.33	11.16	9.81	5.12	6.40	24.96	6.22	6.19	5.44
RR Dispatch Time (min.)	0.60	1.24	1.10	2.15	2.15	2.56	0.47	1.41	17.79	1.91	1.85	1.71
RR Resp. Time (min.)	3.33	6.12	3.48	7.18	9.20	7.27	4.65	4.91	6.97	4.41	4.42	3.81
Event Clearance (min.)	40.38	45.42	41.82	71.02	71.07	71.07	200.28	168.43	183.61	19.25	19.39	19.54
Roadway Clear. (min.)	13.07	15.21	14.58	53.27	53.74	53.34	188.61	165.13	169.38			
Incident Clearance (min.)	40.38	45.42	41.82	71.02	71.07	71.07	200.28	168.43	183.61			
# of Events w/ RR/SIRV	52	51	492	62	57	396	7	6	88	1,856	1,784	15,917
RR/SIRV Responses	52	51	492	62	57	396	7	6	88	1,856	1,784	15,917
RR/SIRV Activities	61	65	625	83	77	605	12	7	143	2,027	1,911	17,282

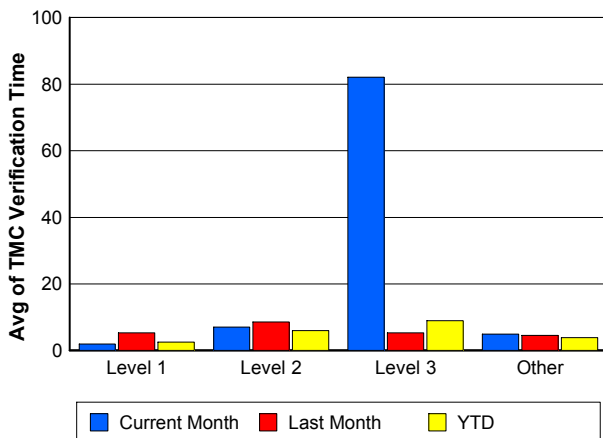
Number of Events / Severity



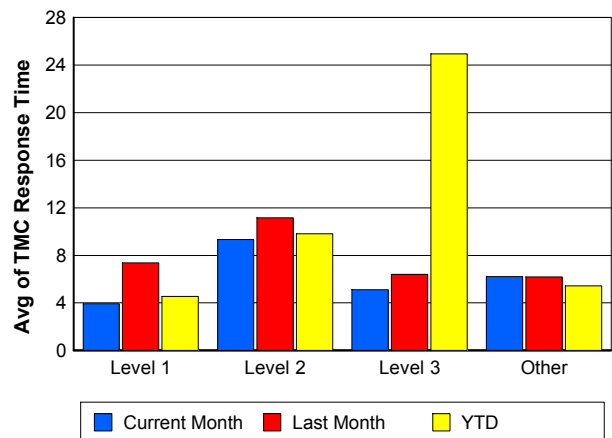
TMC Detection Time



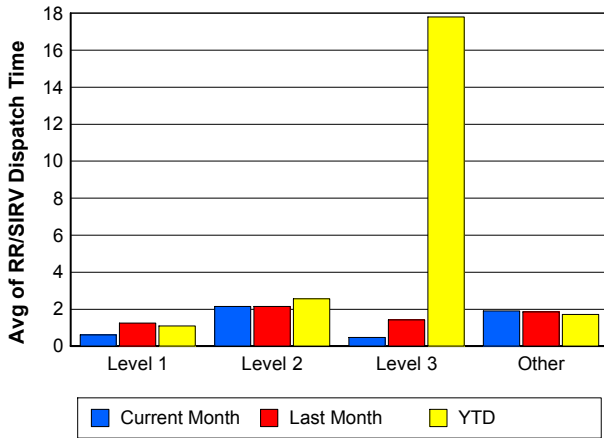
TMC Verification Time



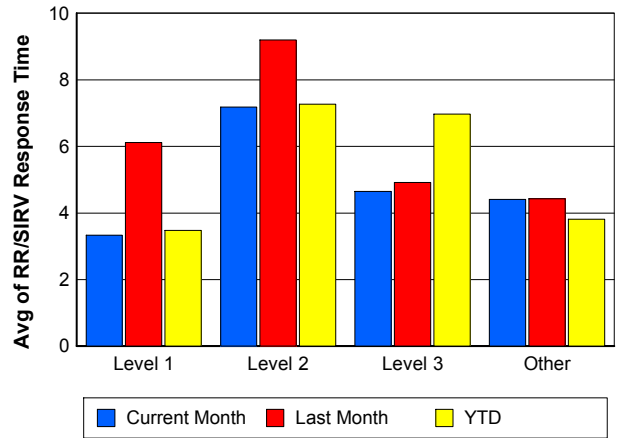
TMC Response Time



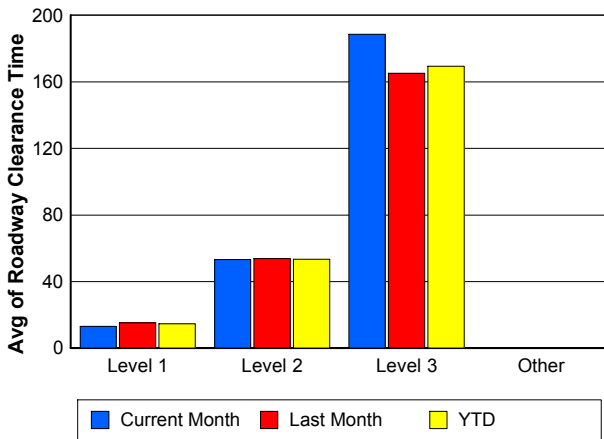
Road Ranger / SIRV Dispatch Time



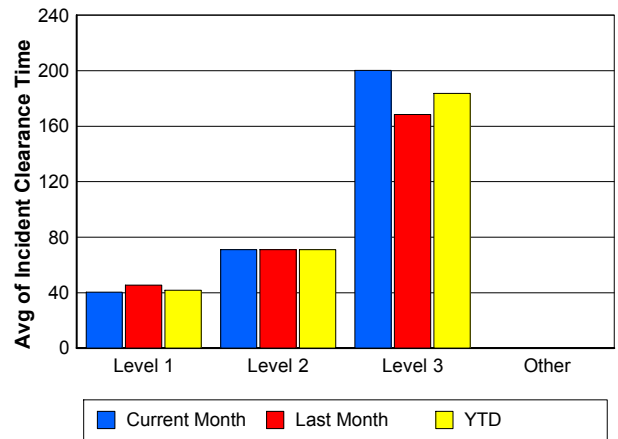
Road Ranger / SIRV Response Time



Roadway Clearance Time (2A)



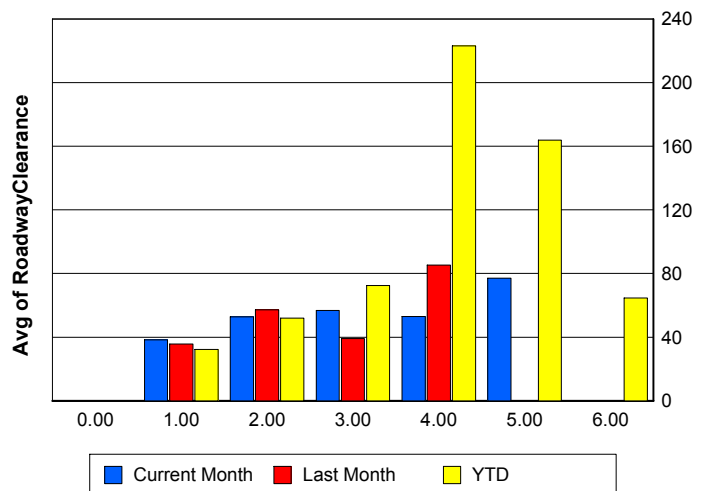
Incident Clearance Time (3B)



Roadway Clearance by Maximum Number of Lanes Blocked

	Current Month	Last Month	YTD
0			
1	38.36	35.79	32.21
2	52.66	57.22	51.97
3	56.74	39.20	72.55
4	52.98	85.32	223.06
5	77.08	0.00	163.86
6	0.00	0.00	64.70

Roadway Clearance Time (2A)



Performance Measures by Roadway

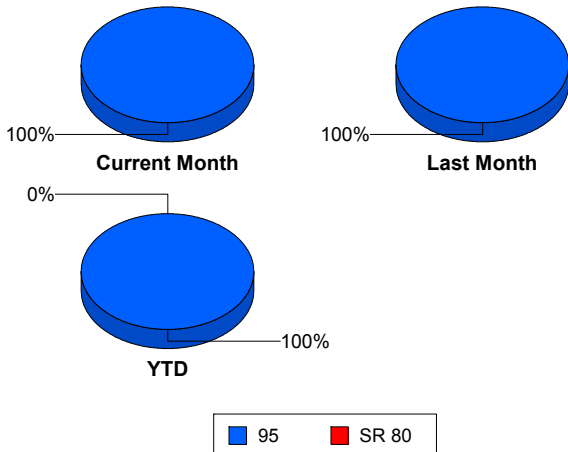
95

	<u>Current Month</u>	<u>Last Month</u>	<u>YTD</u>
Number of Events	2,025	1,945	18,884
Number of Incidents	125	115	1,163
TMC Detection (min.)	0.27	0.00	0.03
TMC Verification (min.)	5.18	4.65	3.91
TMC Response (min.)	6.26	6.37	5.62
RR Dispatch Time (min.)	1.88	1.84	1.80
RR Resp. Time (min.)	4.47	4.61	3.90
Event Clearance (min.)	22.08	22.06	22.30
Roadway Clear. (min.)	43.48	42.13	42.57
Incident Clearance (min.)	65.02	64.55	64.43
# of Events w/ RR/SIRV	1,977	1,898	16,893
RR/SIRV Responses	1,977	1,898	16,893
RR/SIRV Activities	2,183	2,060	18,655

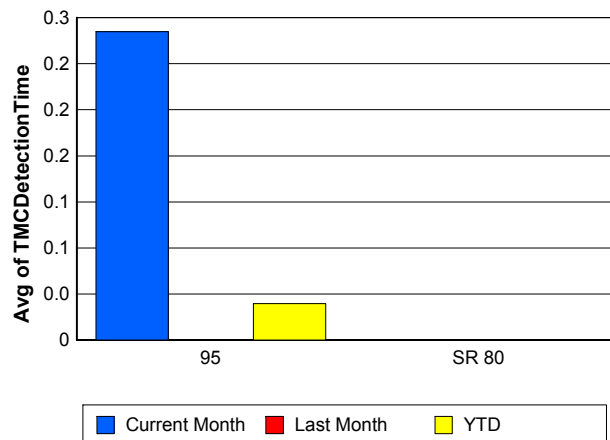
SR 80

	<u>YTD</u>
Number of Events	4
Number of Incidents	3
TMC Detection (min.)	0.00
TMC Verification (min.)	0.00
TMC Response (min.)	
RR Dispatch Time (min.)	
RR Resp. Time (min.)	
Event Clearance (min.)	1,409.98
Roadway Clear. (min.)	1,789.50
Incident Clearance (min.)	1,847.09
# of Events w/ RR/SIRV	0
RR/SIRV Responses	0
RR/SIRV Activities	0

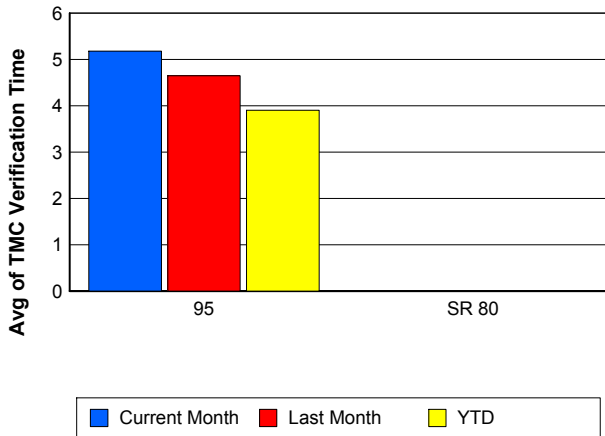
Number of Events / Roadway



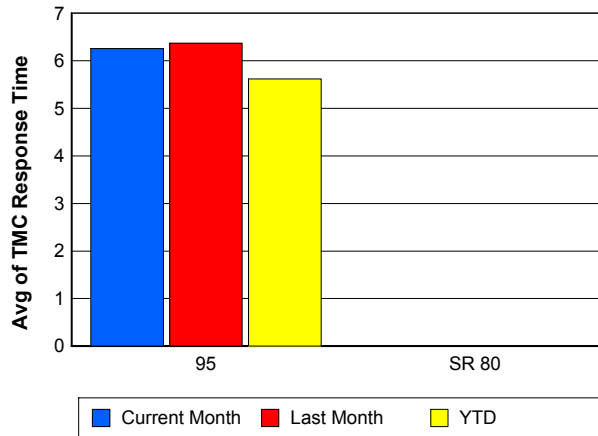
TMC Detection Time



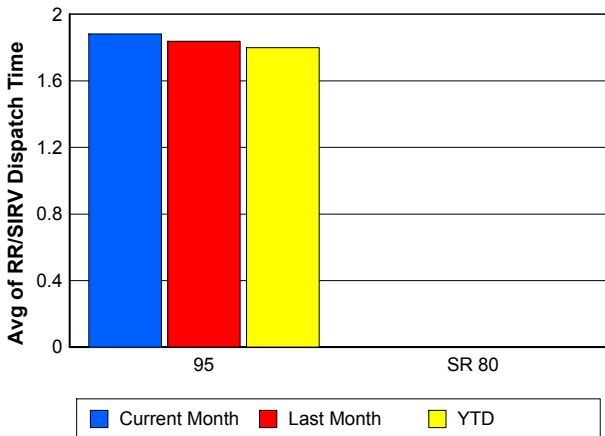
TMC Verification Time



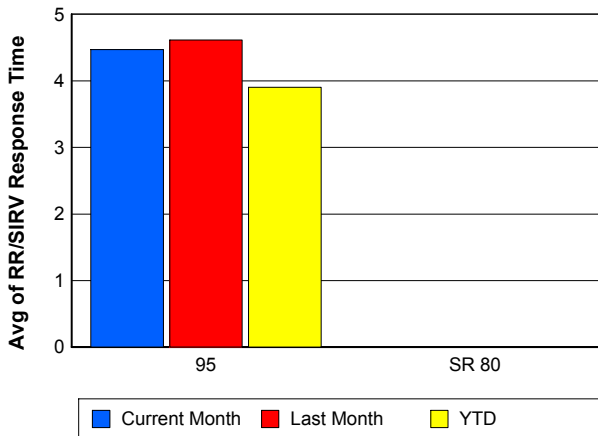
TMC Response Time



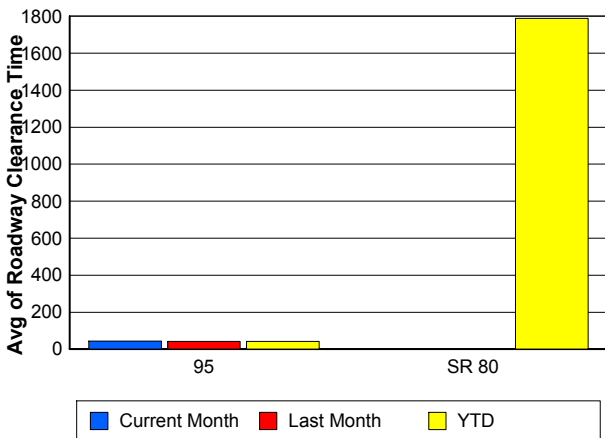
Road Ranger / SIRV Dispatch Time



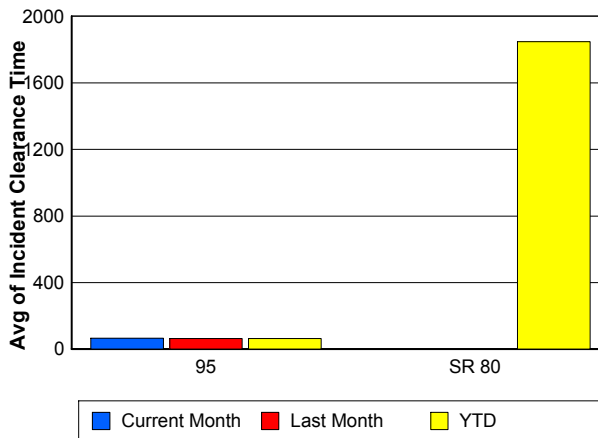
Road Ranger / SIRV Response Time



Roadway Clearance Time (2A)



Incident Clearance Time (3B)



Performance Measures by Event Type

Accident

	<u>Current Month</u>	<u>Last Month</u>	<u>YTD</u>
Number of Events	180	165	1,605
Number of Incidents	88	77	763
TMC Detection (min.)	2.99	0.00	0.35
TMC Verification (min.)	8.76	7.49	5.37
TMC Response (min.)	7.45	10.02	8.31
RR Dispatch Time (min.)	1.57	2.30	2.47
RR Response Time (min.)	5.87	7.75	5.84
Event Clearance (min.)	58.92	60.66	58.93
Roadway Clearance (min.)	46.33	50.31	46.05
Incident Clearance (min.)	72.28	78.48	73.56
# of Events w/ RR/SIRV	176	164	1,373
RR/SIRV Assists	176	164	1,373
RR/SIRV Activities	209	192	1,718

Debris on Roadway

	<u>Current Month</u>	<u>Last Month</u>	<u>YTD</u>
Number of Events	105	108	1,284
Number of Incidents	1	2	39
TMC Detection (min.)	0.00	0.00	0.00
TMC Verification (min.)	9.25	8.36	7.87
TMC Response (min.)	9.41	8.63	8.10
RR Dispatch Time (min.)	2.72	2.57	1.99
RR Response Time (min.)	6.68	6.04	6.12
Event Clearance (min.)	13.94	14.93	12.47
Roadway Clearance (min.)	3.78	33.68	20.86
Incident Clearance (min.)	6.27	33.69	23.83
# of Events w/ RR/SIRV	105	106	1,265
RR/SIRV Assists	105	106	1,265
RR/SIRV Activities	108	113	1,349

Disabled Vehicle

	<u>Current Month</u>	<u>Last Month</u>	<u>YTD</u>
Number of Events	1,661	1,565	14,469
Number of Incidents	27	26	247
TMC Detection (min.)	0.00	0.00	0.00
TMC Verification (min.)	4.53	4.30	3.66
TMC Response (min.)	5.78	5.80	4.89
RR Dispatch Time (min.)	1.82	1.76	1.56
RR Response Time (min.)	4.06	4.13	3.42
Event Clearance (min.)	18.47	18.91	18.08
Roadway Clearance (min.)	26.71	20.39	25.78
Incident Clearance (min.)	39.78	27.85	35.85
# of Events w/ RR/SIRV	1,638	1,543	13,676
RR/SIRV Assists	1,638	1,543	13,676
RR/SIRV Activities	1,818	1,694	15,067

Emergency Vehicles

	<u>Current Month</u>	<u>Last Month</u>	<u>YTD</u>
Number of Events	1	1	17
Number of Incidents	1	0	10
TMC Detection (min.)	0.20	0.00	0.01
TMC Verification (min.)	0.00	0.00	1.87
TMC Response (min.)		0.40	7.80
RR Dispatch Time (min.)		0.35	2.77
RR Response Time (min.)		0.05	4.75
Event Clearance (min.)	18.00	2.45	43.12
Roadway Clearance (min.)	18.30		39.55
Incident Clearance (min.)	18.00		44.69
# of Events w/ RR/SIRV	0	1	8
RR/SIRV Assists	0	1	8
RR/SIRV Activities	0	1	10

Other

	<u>Current Month</u>	<u>Last Month</u>	<u>YTD</u>
Number of Events	56	86	1,001
Number of Incidents	0	0	7
TMC Detection (min.)	0.06	0.00	0.00
TMC Verification (min.)	0.96	1.16	1.22
TMC Response (min.)	4.37	7.73	13.57
RR Dispatch Time (min.)	1.93	1.73	6.15
RR Response Time (min.)	3.15	6.22	6.42
Event Clearance (min.)	12.89	10.36	32.25
Roadway Clearance (min.)			40.35
Incident Clearance (min.)			52.93
# of Events w/ RR/SIRV	37	65	390
RR/SIRV Assists	37	65	390
RR/SIRV Activities	24	37	307

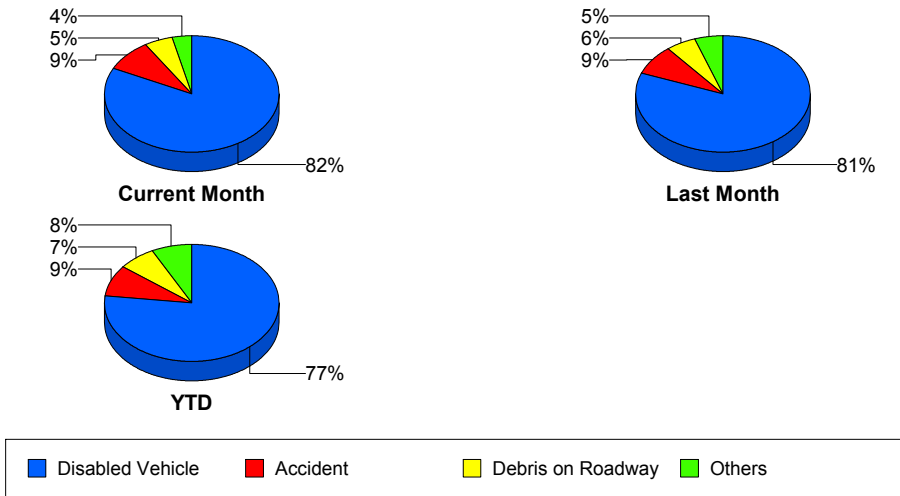
Police Activity

	<u>Current Month</u>	<u>Last Month</u>	<u>YTD</u>
Number of Events	11	7	368
Number of Incidents	5	4	62
TMC Detection (min.)	0.00	0.00	0.08
TMC Verification (min.)	5.92	2.17	0.72
TMC Response (min.)	10.52	6.37	11.77
RR Dispatch Time (min.)	3.15	0.64	4.94
RR Response Time (min.)	8.03	5.73	6.74
Event Clearance (min.)	59.29	34.65	29.57
Roadway Clearance (min.)	90.85	46.45	70.37
Incident Clearance (min.)	96.26	48.03	84.67
# of Events w/ RR/SIRV	10	6	65
RR/SIRV Assists	10	6	65
RR/SIRV Activities	12	10	76

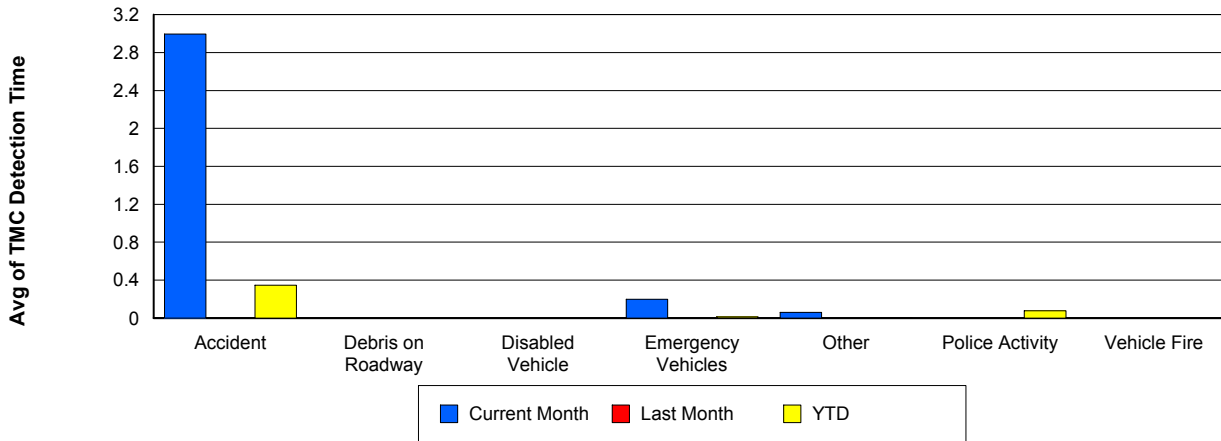
Vehicle Fire

	<u>Current Month</u>	<u>Last Month</u>	<u>YTD</u>
Number of Events	5	7	48
Number of Incidents	3	6	37
TMC Detection (min.)	0.00	0.00	0.00
TMC Verification (min.)	17.20	10.85	5.77
TMC Response (min.)	17.17	13.21	17.47
RR Dispatch Time (min.)	3.14	0.90	9.26
RR Response Time (min.)	14.03	12.31	8.22
Event Clearance (min.)	64.13	61.91	79.88
Roadway Clearance (min.)	53.37	31.30	60.17
Incident Clearance (min.)	62.50	66.17	86.35
# of Events w/ RR/SIRV	5	7	35
RR/SIRV Assists	5	7	35
RR/SIRV Activities	6	7	46

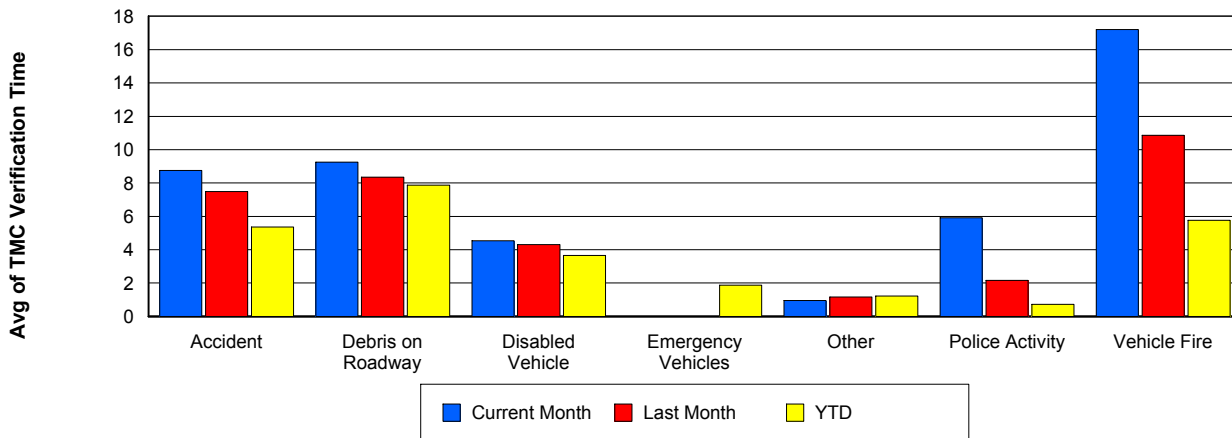
Number of Events / Event Type



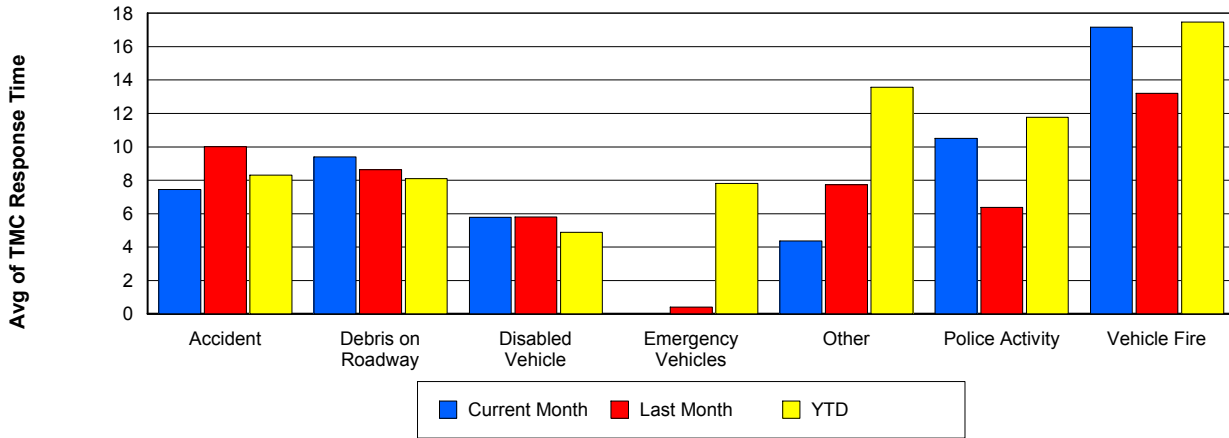
TMC Detection Time



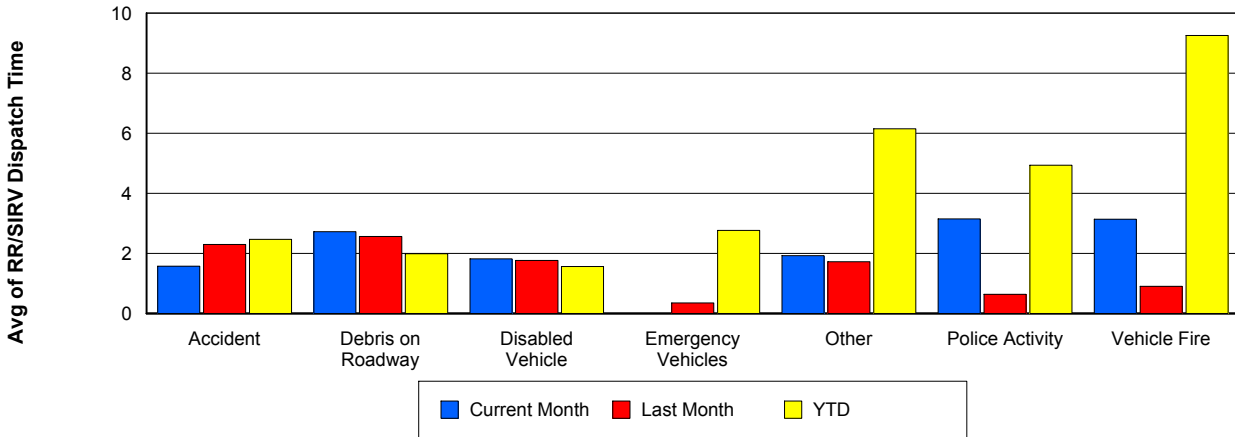
TMC Verification Time



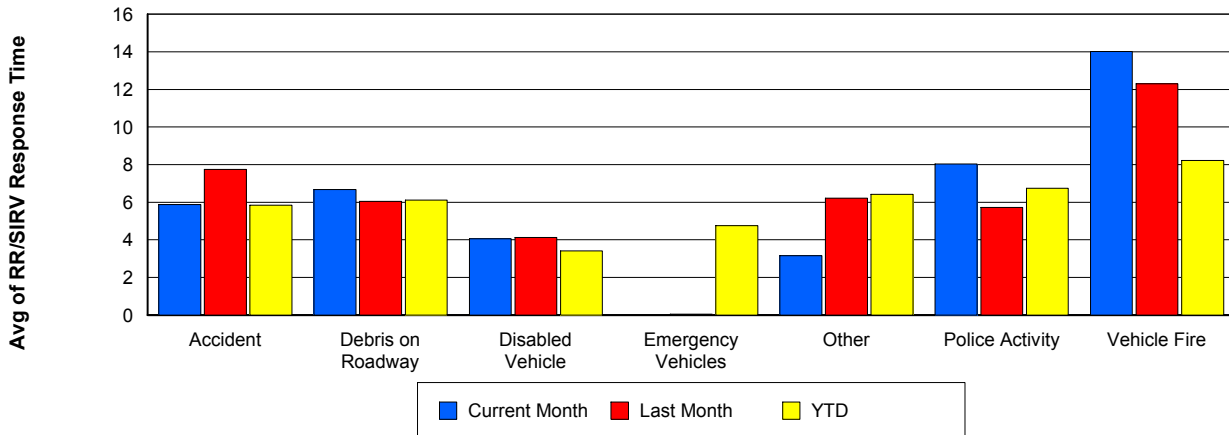
TMC Response Time



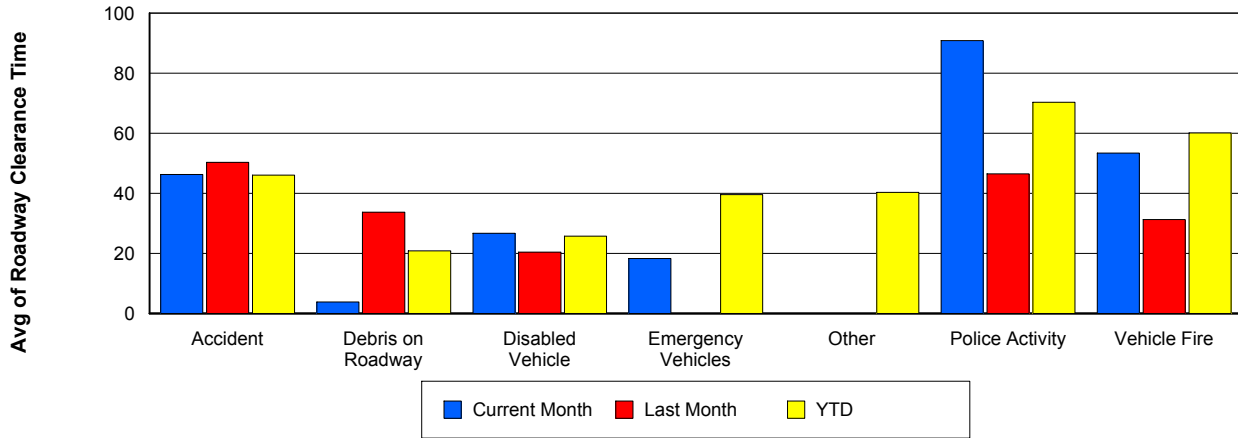
Road Ranger / SIRV Dispatch Time



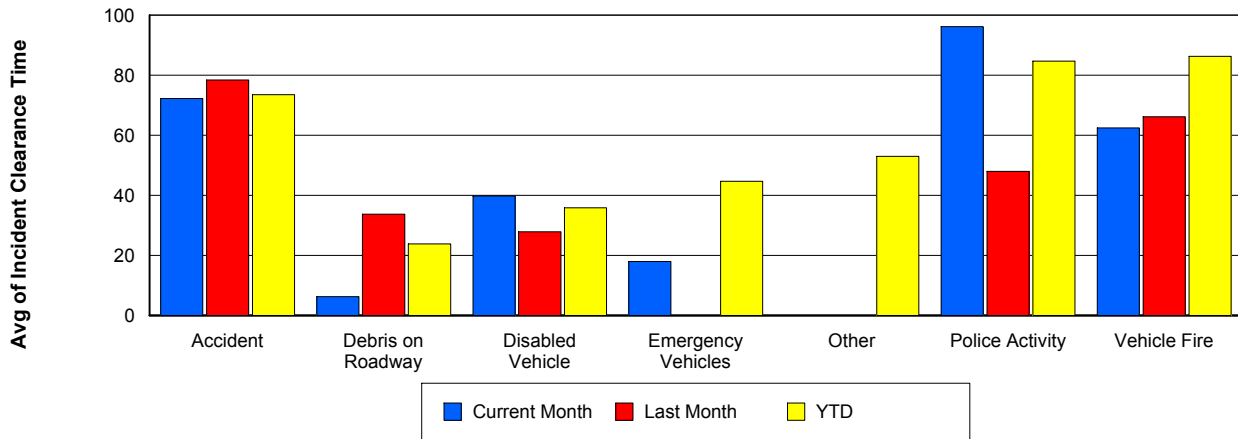
Road Ranger / SIRV Response Time



Roadway Clearance Time (2A)



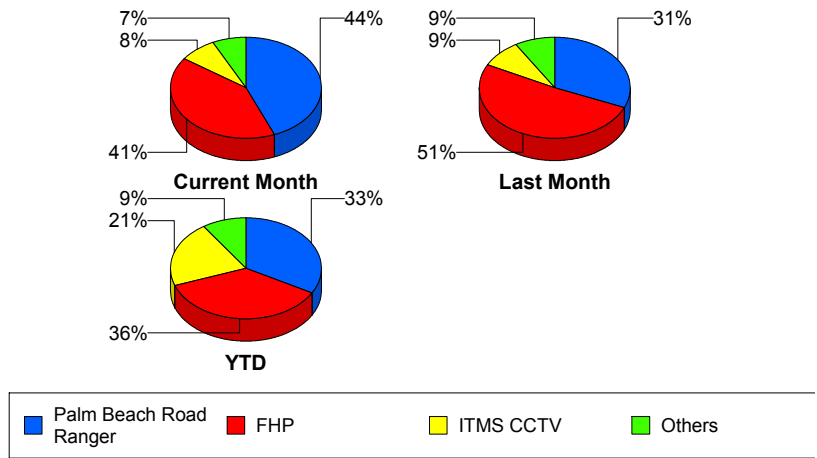
Incident Clearance Time (3B)



Incident Detection Methods

	Current Month	Last Month	YTD
Broward CCTV	2	2	12
Broward Road Ranger	0	0	8
Broward TMC	2	1	8
Broward VideoWall	0	0	1
Construction CEI	0	0	2
District 4	1	0	24
Emergency Operations	0	0	1
FDOT Maintenance	0	1	2
FHP	51	59	424
I-95 Construction PIO	1	1	5
ITMS	1	1	15
ITMS CCTV	10	10	246
Local Police	0	0	1
Media	0	1	3
Motorist	2	1	20
Other	0	1	1
Palm Beach Road Ran	55	36	387
Road Watcher	0	1	2
SmarTraveler (511)	0	0	4
Total	125	115	1,166

Total Incidents by Detection Method

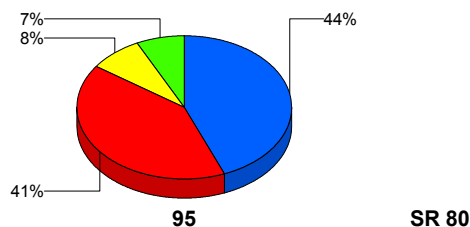


Incident Detection Methods by Roadway

		Current Month	Last Month	YTD
95	Broward CCTV	2	2	12
	Broward Road Ranger	0	0	8
	Broward TMC	2	1	8
	Broward VideoWall	0	0	1
	Construction CEI	0	0	2
	District 4	1	0	24
	FDOT Maintenance	0	1	2
	FHP	51	59	423
	I-95 Construction PIO	1	1	5
	ITMS	1	1	14
	ITMS CCTV	10	10	246
	Local Police	0	0	1
	Media	0	1	3
	Motorist	2	1	20
	Other	0	1	1
	Palm Beach Road Ran	55	36	387
	Road Watcher	0	1	2
	SmarTraveler (511)	0	0	4
	Total	125	115	1,163
	SR 80	Emergency Operations	0	0
FHP		0	0	1
ITMS		0	0	1
Total		0	0	3
Total	125	115	1,166	

Total Events by Roadway and Detection Method

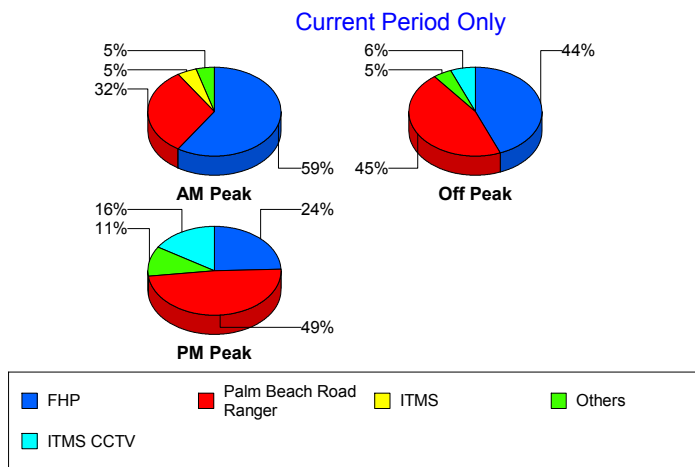
Current Period Only



Incident Detection Methods by Peak Period

		Current Month	Last Month	YTD
AM Peak	Broward CCTV	0	0	2
	Broward Road Ranger	0	0	3
	Broward TMC	0	0	2
	Construction CEI	0	0	1
	District 4	0	0	11
	FHP	13	15	121
	I-95 Construction PIO	0	1	2
	ITMS	1	1	7
	ITMS CCTV	0	4	44
	Motorist	1	1	10
	Palm Beach Road Ran	7	15	118
	Road Watcher	0	0	1
	SmarTraveler (511)	0	0	3
	Total	22	37	325
	Off Peak	Broward CCTV	0	1
Broward Road Ranger		0	0	2
Broward TMC		0	1	4
Broward VideoWall		0	0	1
Construction CEI		0	0	1
District 4		1	0	10
FDOT Maintenance		0	1	2
FHP		29	34	220
I-95 Construction PIO		1	0	3
ITMS		0	0	7
ITMS CCTV		4	4	129
Motorist		1	0	6
Other		0	1	1
Total		66	61	558

Total Events by Peak Period and Detection Method

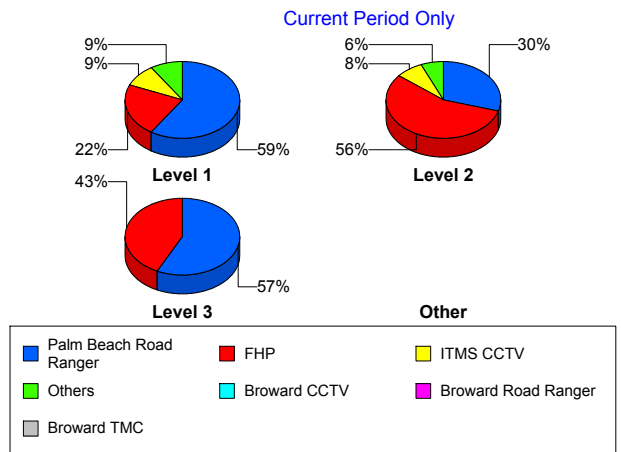


		Current Month	Last Month	YTD
PM Peak	Broward CCTV	2	1	5
	Broward Road Ranger	0	0	3
	Broward TMC	2	0	2
	District 4	0	0	3
	Emergency Operations	0	0	1
	FHP	9	10	83
	ITMS	0	0	1
	ITMS CCTV	6	2	73
	Local Police	0	0	1
	Media	0	1	3
	Motorist	0	0	4
	Palm Beach Road Ran	18	3	104
	Total	37	17	283
Total		125	115	1,166

Incident Detection Methods by Severity

		Current Month	Last Month	YTD
Level 1	Broward CCTV	1	1	8
	Broward Road Ranger	0	0	4
	Broward TMC	1	1	3
	District 4	0	0	16
	FHP	12	23	141
	I-95 Construction PIO	1	1	4
	ITMS	0	0	5
	ITMS CCTV	5	5	108
	Local Police	0	0	1
	Motorist	2	0	13
	Other	0	1	1
	Palm Beach Road Ran	32	20	257
	Road Watcher	0	0	1
	SmarTraveler (511)	0	0	1
	Total	54	52	563

Total Events by Severity and Detection Method



		Current Month	Last Month	YTD
Level 2	Broward CCTV	1	1	2
	Broward Road Ranger	0	0	3
	Broward TMC	1	0	3
	Broward VideoWall	0	0	1
	Construction CEI	0	0	1
	District 4	1	0	7
	FDOT Maintenance	0	1	2
	FHP	36	30	223
	I-95 Construction PIO	0	0	1
	ITMS	1	1	8
	ITMS CCTV	5	5	105
	Media	0	1	2
	Motorist	0	1	6
	Palm Beach Road Ran	19	16	110
	Road Watcher	0	1	1
	SmarTraveler (511)	0	0	3
	Total	64	57	478
Level 3	Broward CCTV	0	0	2
	Broward Road Ranger	0	0	1
	Broward TMC	0	0	2
	Construction CEI	0	0	1
	District 4	0	0	1
	Emergency Operations	0	0	1
	FHP	3	6	60
	ITMS	0	0	2
	ITMS CCTV	0	0	33
	Media	0	0	1
	Motorist	0	0	1
	Palm Beach Road Ran	4	0	20
	Total	7	6	125
Total	125	115	1,166	

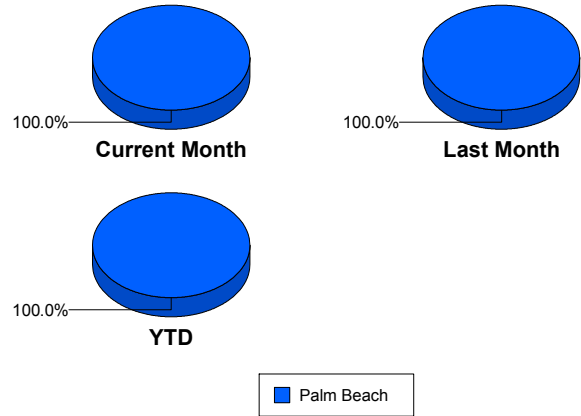
Road Ranger / SIRV Performance Measures

Road Ranger / SIRV Performance By County

Values presented are:
 - Total Events with a RR/SIRV Response
 - Total RR/SIRV Responses,
 - Total Activities Performed

	Current Mo	Last Month	YTD
Palm Beach	2,566	2,536	22,128
	2,676	2,644	22,600
	2,853	2,793	24,496

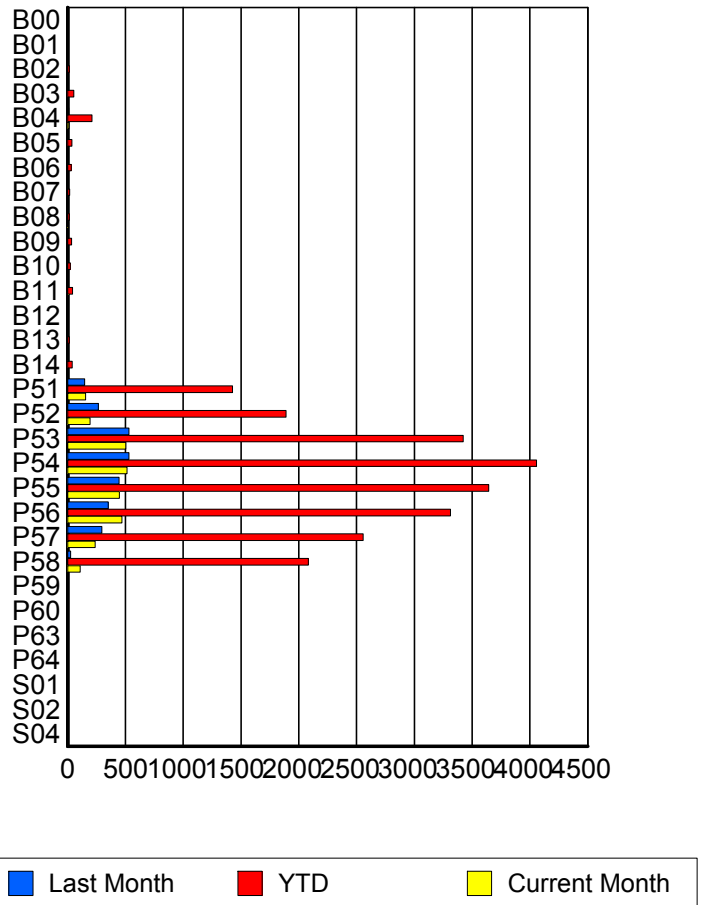
RR/SIRV Responses per County



Road Ranger / SIRV Performance By Truck

	Current Mo	Last Month	YTD
B00	0	1	7
	0	1	7
	0	1	7
B01	0	0	1
	0	0	1
	0	0	1
B02	0	0	14
	0	0	14
	0	0	15
B03	2	8	53
	2	8	53
	2	8	54
B04	13	11	211
	13	11	212
	13	11	236
B05	0	6	35
	0	7	37
	0	7	38
B06	1	6	31
	1	6	32
	1	6	34
B07	2	1	17
	2	1	17
	2	1	17
B08	3	2	16
	3	2	16
	3	2	19

RR/SIRV Responses per Truck



	Current Mo	Last Month	YTD
B09	3	7	34
	3	7	35
	4	8	38
B10	1	3	22
	1	3	23
	1	3	23
B11	8	1	42
	8	1	42
	8	1	43
B12	0	0	6
	0	0	6
	0	0	7
B13	2	0	16
	2	0	16
	2	0	17
B14	3	3	40
	3	3	41
	3	3	43
P51	154	146	1,413
	157	147	1,428
	165	151	1,492
P52	193	263	1,880
	195	265	1,890
	205	279	2,020
P53	493	523	3,374
	502	532	3,424
	534	552	3,618
P54	506	520	4,011
	513	531	4,058
	559	579	4,374
P55	437	443	3,610
	447	446	3,643
	475	467	3,887
P56	459	348	3,271
	471	351	3,314
	502	378	3,561
P57	235	293	2,531
	238	295	2,556
	251	308	2,716
P58	110	27	2,054
	110	27	2,083
	118	28	2,219
P59	0	0	1
	0	0	1
	0	0	2

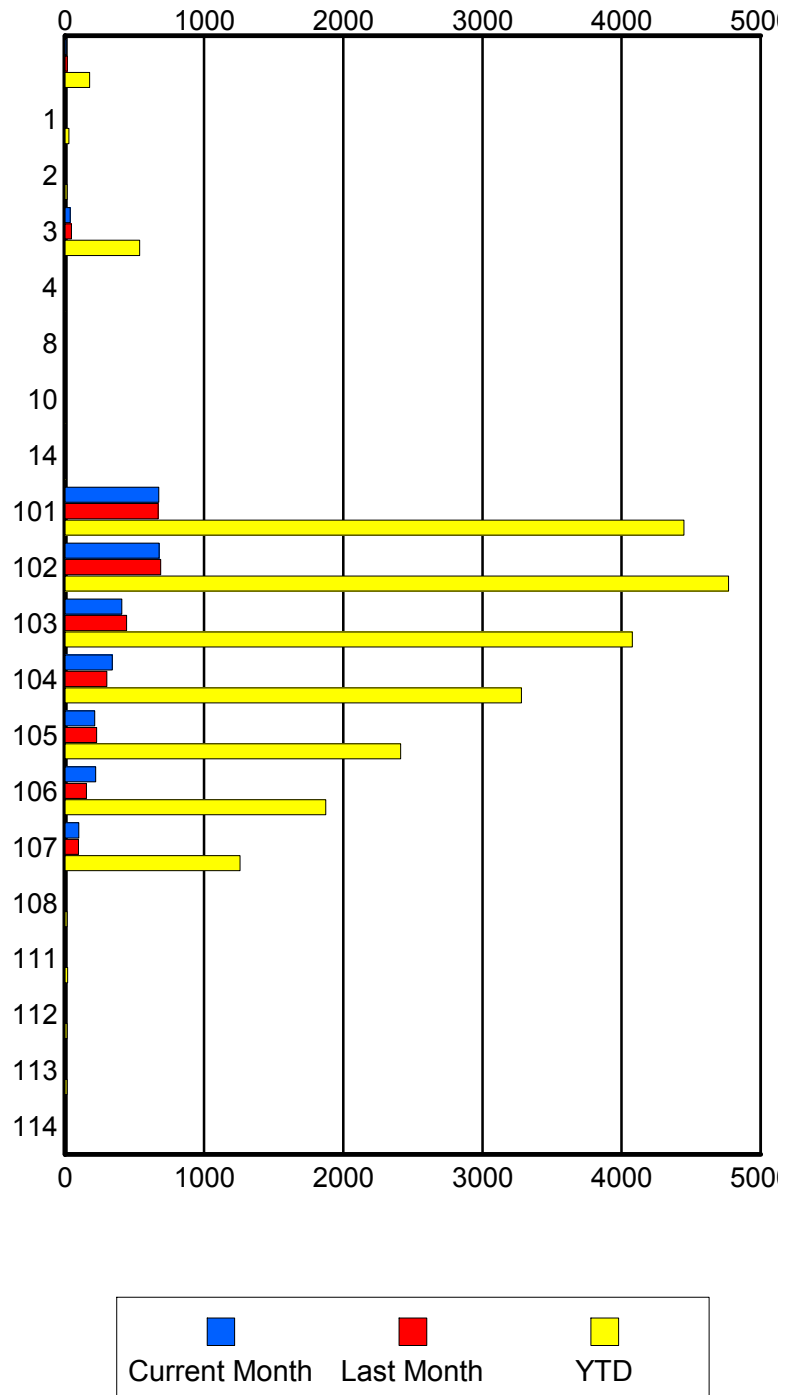
	Current Mo	Last Month	YTD
P60	0	0	1
	0	0	1
	0	0	1
P63	5	0	5
	5	0	5
	5	0	5
P64	0	0	1
	0	0	1
	0	0	1
S01	0	0	3
	0	0	3
	0	0	3
S02	0	0	3
	0	0	3
	0	0	3
S04	0	0	2
	0	0	2
	0	0	2

Road Ranger / SIRV Performance By Beat

	Current Mo	Last Month	YTD
	9	17	176
	9	17	177
	9	17	182
1	0	1	27
	0	1	28
	0	1	29
2	2	1	14
	2	1	14
	2	1	16
3	36	46	522
	36	47	536
	37	48	575
4	0	0	2
	0	0	2
	0	0	2
8	0	1	1
	0	1	1
	0	1	1
10	0	0	6
	0	0	6
	0	0	9
14	0	0	7
	0	0	7
	0	0	7
101	660	660	4,393
	673	670	4,448
	715	704	4,755
102	669	671	4,711
	677	688	4,769
	720	721	5,059
103	398	437	4,026
	407	442	4,077
	436	466	4,378
104	332	297	3,240
	340	300	3,281
	366	324	3,519
105	211	222	2,389
	214	226	2,412
	229	241	2,566
106	214	154	1,851
	220	154	1,875
	232	168	2,004
107	98	96	1,244
	98	97	1,258
	107	101	1,324

Values presented are:
 - Total Events with a RR/SIRV Response
 - Total RR/SIRV Responses,
 - Total Activities Performed

RR/SIRV Responses per Beat



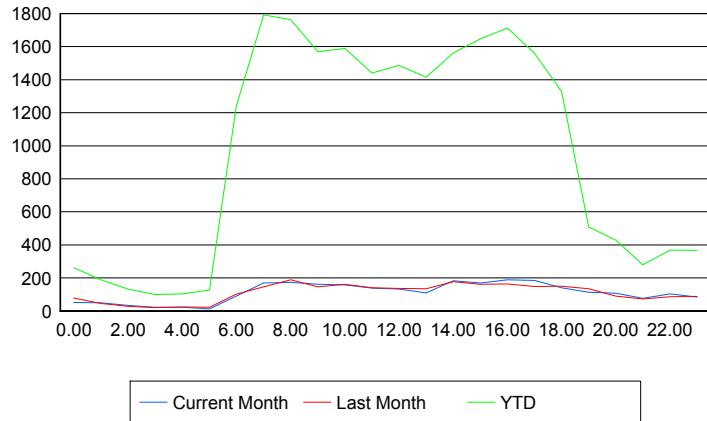
	Current Mo	Last Month	YTD
108	0	0	13
	0	0	14
	0	0	14
111	0	0	18
	0	0	19
	0	0	20
112	0	0	14
	0	0	15
	0	0	16
113	0	0	13
	0	0	14
	0	0	14
114	0	0	6
	0	0	6
	0	0	6

Road Ranger / SIRV Performance By Time of Day

Values presented are:
 - Total Events with a RR/SIRV Response
 - Total RR/SIRV Responses,
 - Total Activities Performed

	Current Mo	Last Month	YTD
12AM-1AM	50	75	254
	51	78	263
	57	79	281
1AM-2AM	47	42	179
	50	45	189
	55	46	202
2AM-3AM	33	28	129
	35	28	133
	39	31	144
3AM-4AM	21	20	95
	22	20	99
	23	20	101
4AM-5AM	23	23	97
	23	25	104
	24	26	112
5AM-6AM	10	18	113
	12	23	127
	12	23	131
6AM-7AM	86	98	1,186
	90	101	1,239
	96	107	1,306
7AM-8AM	162	143	1,711
	169	146	1,793
	184	155	1,925

Number of Responses / Hour of the Day



	Current Mo	Last Month	YTD
8AM-9AM	165	177	1,683
	174	188	1,763
	191	197	1,883
9AM-10AM	149	141	1,511
	162	146	1,570
	174	151	1,695
10AM-11AM	155	158	1,539
	158	161	1,590
	166	170	1,680
11AM-12PM	130	135	1,394
	139	140	1,441
	146	152	1,558
12PM-1PM	123	133	1,428
	132	137	1,487
	144	149	1,599
1PM-2PM	105	125	1,363
	109	135	1,415
	112	141	1,512
2PM-3PM	181	168	1,503
	183	177	1,563
	194	188	1,660
3PM-4PM	166	155	1,593
	169	161	1,647
	180	175	1,760
4PM-5PM	186	157	1,668
	188	163	1,714
	194	176	1,819
5PM-6PM	168	145	1,505
	184	148	1,560
	198	153	1,654
6PM-7PM	134	143	1,301
	141	150	1,329
	147	154	1,396
7PM-8PM	111	127	491
	113	134	507
	123	147	547
8PM-9PM	105	86	413
	107	90	429
	113	93	449
9PM-10PM	72	70	262
	77	73	279
	83	79	300
10PM-11PM	101	81	350
	103	86	368
	108	87	389

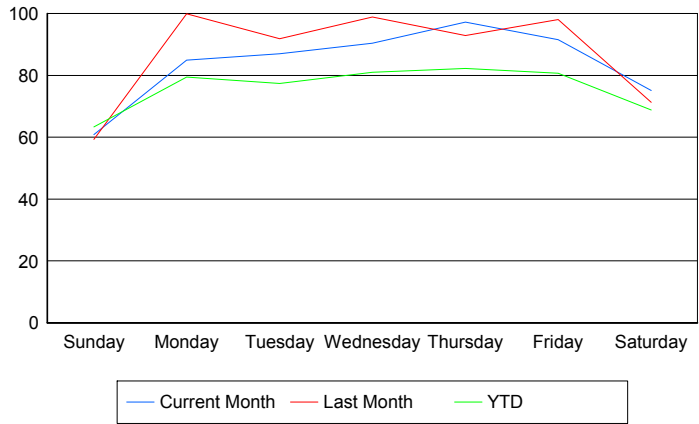
	Current Mo	Last Month	YTD
11PM-12AM	83	88	360
	85	89	367
	90	94	393

Road Ranger / SIRV Performance By Day of Week

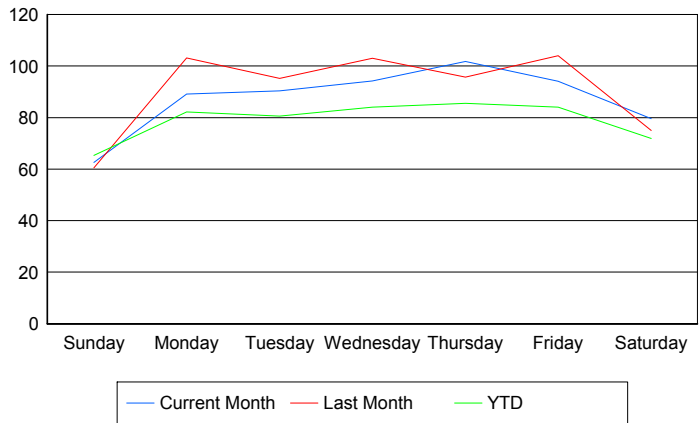
Values presented are:
 - Total Events with a RR/SIRV Response
 - Total RR/SIRV Responses,
 - Total Activities Performed

	Current Mo	Last Month	YTD
Sunday	238	285	1,052
	245	290	1,085
	264	306	1,162
Monday	338	494	3,946
	354	510	4,052
	375	546	4,324
Tuesday	426	366	3,858
	442	380	3,996
	466	399	4,264
Wednesday	447	381	4,045
	466	397	4,193
	486	423	4,474
Thursday	482	362	4,126
	506	373	4,247
	533	392	4,580
Friday	354	378	3,988
	363	401	4,148
	401	422	4,430
Saturday	284	279	1,141
	300	293	1,189
	328	305	1,262

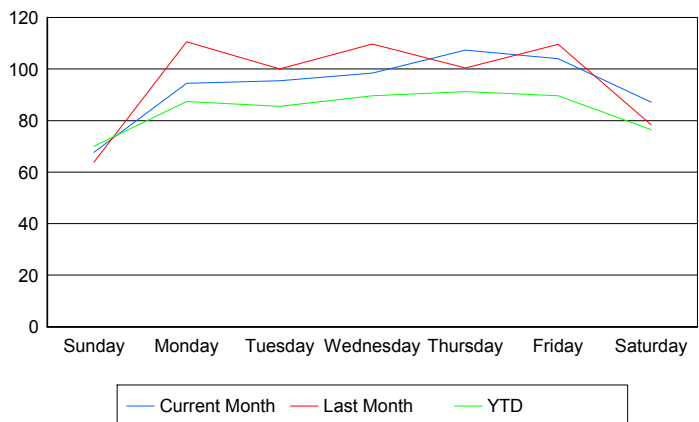
Avg # of events with a RR/SIRV Response per Day of the Week



Avg # of RR/SIRV Responses per Day of the Week



Avg # of RR/SIRV Activities Performed per Day of the Week



Road Ranger / SIRV Responses per Time of Day and Day of Week

