



# Weekly Performance Measures Report Palm Beach County



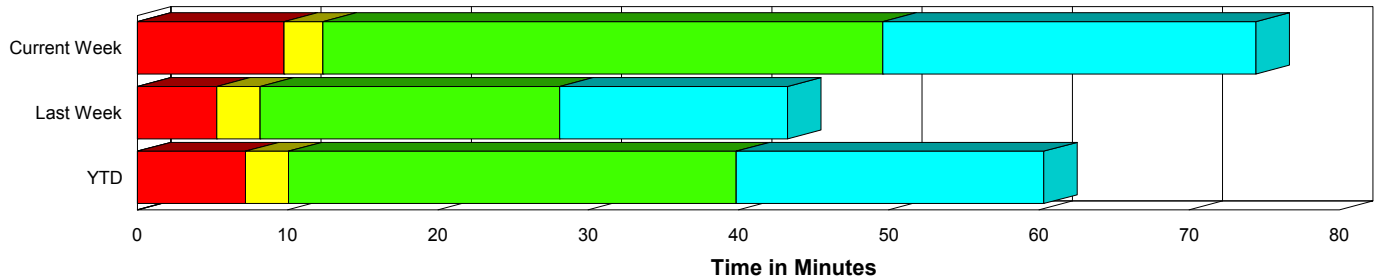
Period From Jan 31, 2010 to Feb 6, 2010

Created on:  
February 08, 2010  
8:58 am

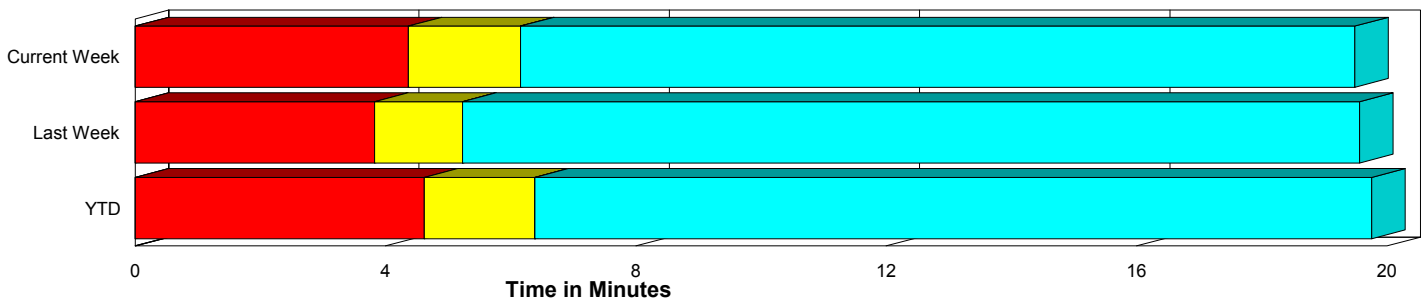
## Performance Measures Summary

	Traffic Events (No Lanes Blocked)			Incidents (Lanes Blocked)		
	<u>This Week</u>	<u>Last Week</u>	<u>YTD</u>	<u>This Week</u>	<u>Last Week</u>	<u>YTD</u>
Number of Events	426	418	2,147	32	19	122
TMC Detection (min.)	0.00	0.00	0.00	0.00	0.00	0.00
TMC Verification (min.)	4.37	3.82	4.62	9.77	5.28	7.20
TMC Response (min.)	6.60	5.44	6.68	12.66	8.17	10.26
RR Dispatch Time (min.)	2.12	1.54	2.50	3.23	1.80	2.16
RR Response Time (min.)	4.59	3.90	4.21	9.43	6.38	8.09
Roadway Clearance (min.)				48.74	28.12	40.71
Event Clearance (min.)	19.93	19.77	20.05	73.56	43.27	61.14
# of Events w/ RR/SIRV	399	408	2,073	31	19	119
RR/SIRV Responses	399	408	2,073	31	19	119
RR/SIRV Activities	419	438	2,211	45	23	156

### Incident Clearance Time-Line



### Traffic Event (Non-Lane Blockage) Time-Line



<span style="color: blue;">■</span> Avg. TMC Detection Time	<span style="color: green;">■</span> Avg. Time from TMC Response to Roadway Clearance*
<span style="color: red;">■</span> Avg. Time from TMC Detection to TMC Verification	<span style="color: cyan;">■</span> Avg. Time from Roadway Clearance to Incident/Event Clearance**
<span style="color: yellow;">■</span> Avg. Time from TMC Verification to TMC Response	

\* Roadway clearance equals all travel lanes open

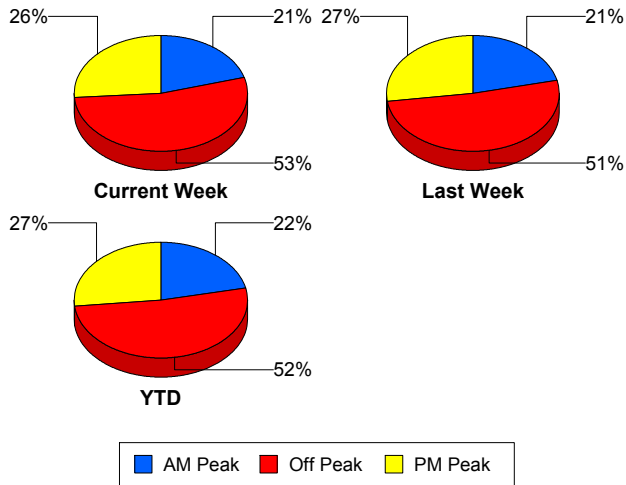
\*\* Incident clearance equals time when last responder has left the scene

## Performance Measures by Peak Period

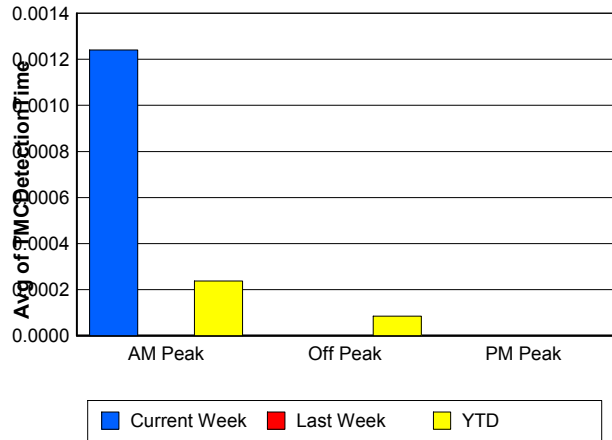
Note: AM peak period is defined as 6am to 10am and PM peak period is defined as 3pm to 7pm.

	AM Peak			Off Peak			PM Peak		
	<u>Current Week</u>	<u>Last Week</u>	<u>YTD</u>	<u>Current Week</u>	<u>Last Week</u>	<u>YTD</u>	<u>Current Week</u>	<u>Last Week</u>	<u>YTD</u>
Number of Events	94	93	491	244	225	1,172	120	119	606
Number of Incidents	10	4	36	15	9	56	7	6	30
TMC Detection (min.)	0.00	0.00	0.00	0.00	0.00	0.00	0.00	0.00	0.00
TMC Verification (min.)	2.63	4.85	3.58	5.53	3.59	5.15	4.84	3.69	4.95
TMC Response (min.)	5.46	6.97	5.79	7.75	5.15	7.74	6.95	5.27	6.09
RR Dispatch Time (min.)	1.79	1.24	1.23	1.93	1.75	3.21	3.03	1.41	2.07
RR Response Time (min.)	3.64	5.76	4.56	6.03	3.40	4.59	3.93	3.85	4.01
Event Clearance (min.)	29.77	23.75	22.56	23.28	20.70	23.20	19.72	18.64	20.20
Roadway Clearance (min.)	49.18	16.51	42.36	49.83	31.54	41.22	45.79	30.72	37.78
Incident Clearance (min.)	99.14	27.95	71.35	63.95	41.34	59.14	57.59	56.36	52.63
# of Events w/ RR/SIRV	88	91	474	225	222	1,131	117	114	587
RR/SIRV Responses	88	91	474	225	222	1,131	117	114	587
RR/SIRV Activities	99	99	512	239	240	1,219	126	122	636

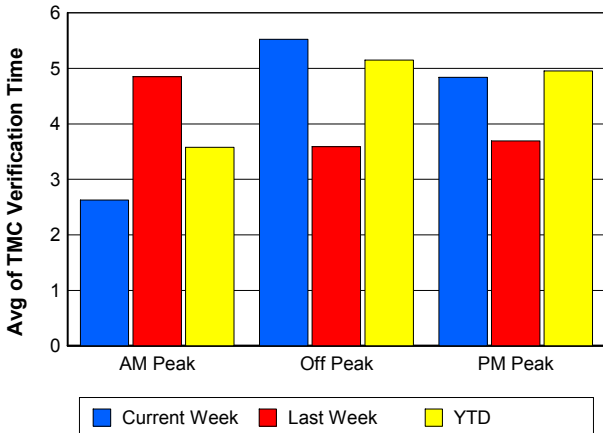
### Number of Events / Peak Period



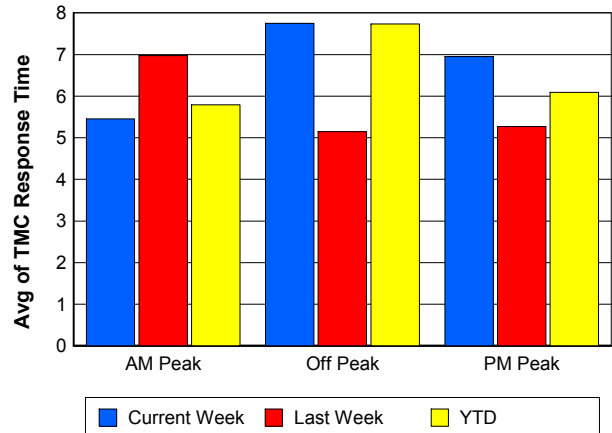
### TMC Detection Time



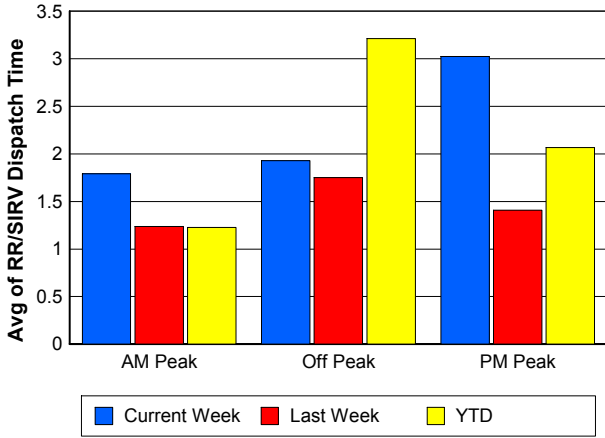
### TMC Verification Time



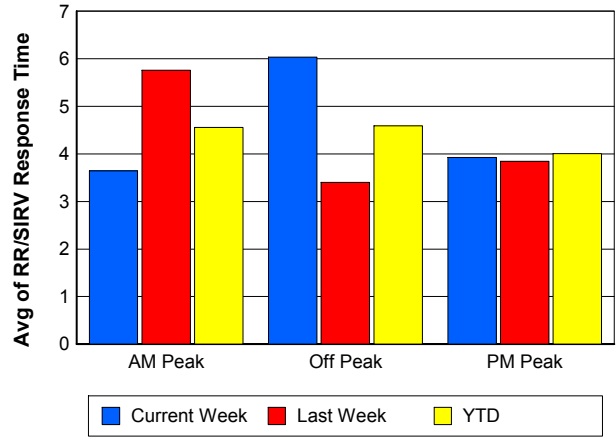
### TMC Response Time



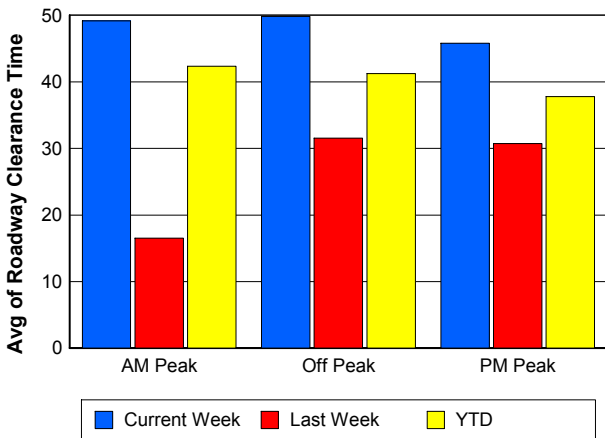
## Road Ranger / SIRV Dispatch Time



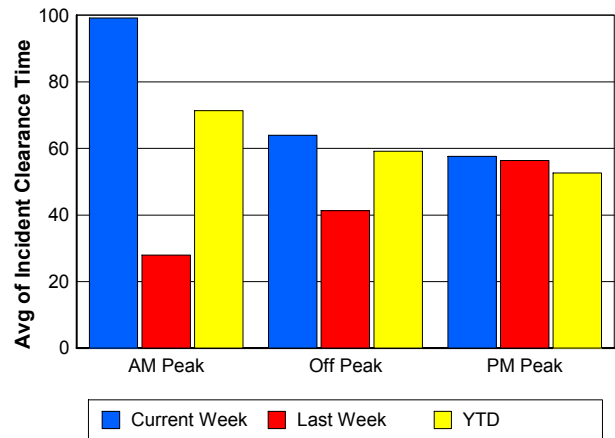
## Road Ranger / SIRV Response Time



## Roadway Clearance Time (2A)



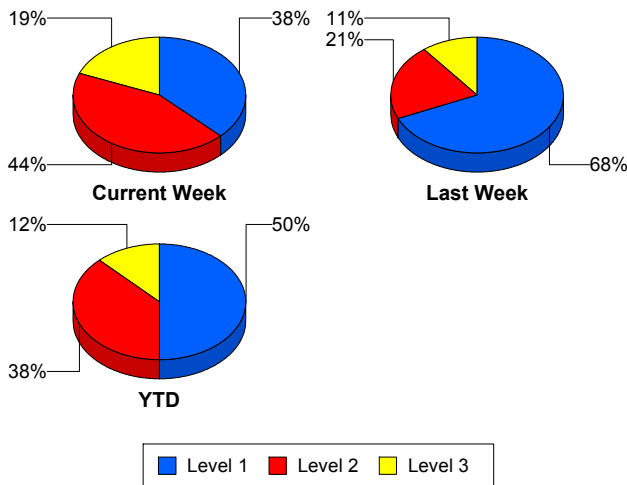
## Incident Clearance Time (3B)



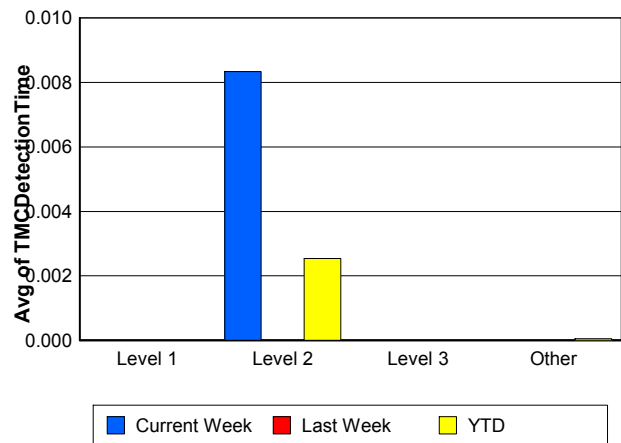
## Performance Measures by Severity

	Level 1			Level 2			Level 3			Other		
	<u>This Week</u>	<u>Last Week</u>	<u>YTD</u>	<u>This Week</u>	<u>Last Week</u>	<u>YTD</u>	<u>This Week</u>	<u>Last Week</u>	<u>YTD</u>	<u>This Week</u>	<u>Last Week</u>	<u>YTD</u>
Number of Events	12	13	61	14	4	46	6	2	15	426	418	2,147
Number of Incidents	12	13	61	14	4	46	6	2	15	0	0	0
TMC Detection (min.)	0.00	0.00	0.00	0.01	0.00	0.00	0.00	0.00	0.00	0.00	0.00	0.00
TMC Verification (min.)	3.87	2.13	3.42	16.23	16.05	12.81	6.50	4.20	5.38	4.37	3.82	4.62
TMC Response (min.)	6.85	5.09	5.70	19.36	20.18	16.64	7.85	4.18	8.37	6.60	5.44	6.68
RR Dispatch Time (min.)	0.56	0.58	0.79	5.31	6.39	3.95	3.84	0.51	2.16	2.12	1.54	2.50
RR Resp. Time (min.)	6.29	4.51	4.92	14.05	13.79	12.68	4.02	3.68	6.21	4.59	3.90	4.21
Event Clearance (min.)	62.63	31.56	45.40	79.12	60.06	70.69	82.43	85.77	95.87	19.93	19.77	20.05
Roadway Clear. (min.)	17.02	14.20	16.15	68.27	46.96	59.62	66.59	80.89	82.56			
Incident Clearance (min.)	62.63	31.56	45.40	79.12	60.06	70.69	82.43	85.77	95.87			
# of Events w/ RR/SIRV	12	13	60	14	4	46	5	2	13	399	408	2,073
RR/SIRV Responses	12	13	60	14	4	46	5	2	13	399	408	2,073
RR/SIRV Activities	15	15	70	24	6	68	6	2	18	419	438	2,211

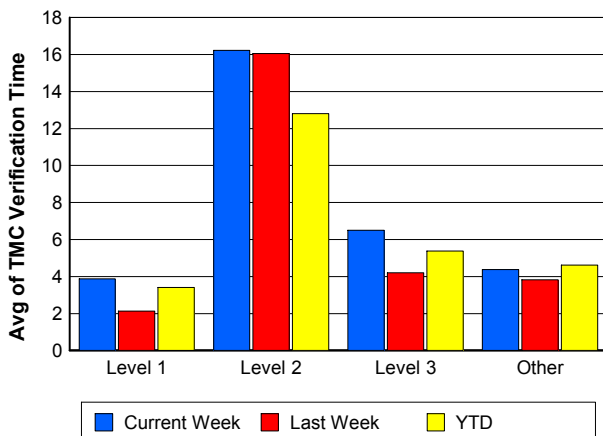
### Number of Events / Severity



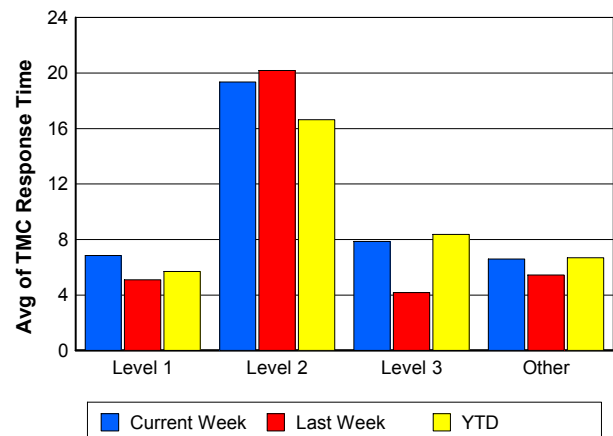
### TMC Detection Time



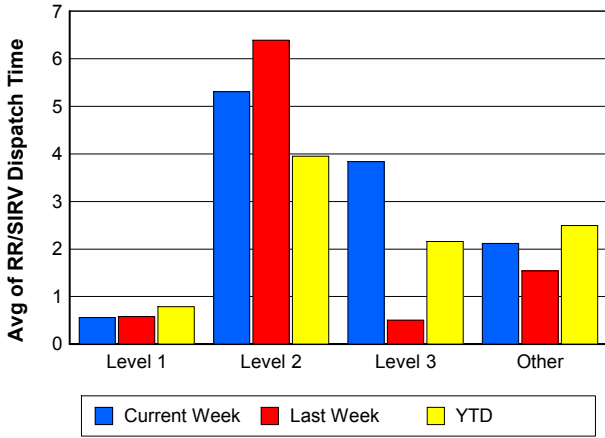
### TMC Verification Time



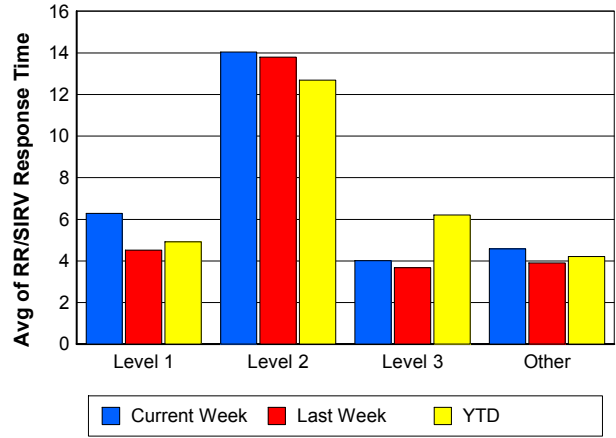
### TMC Response Time



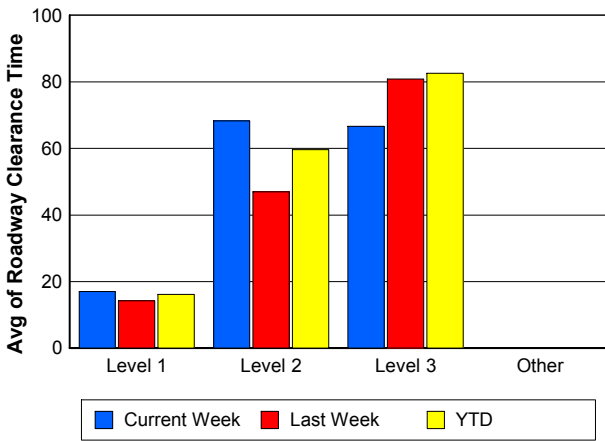
### Road Ranger / SIRV Dispatch Time



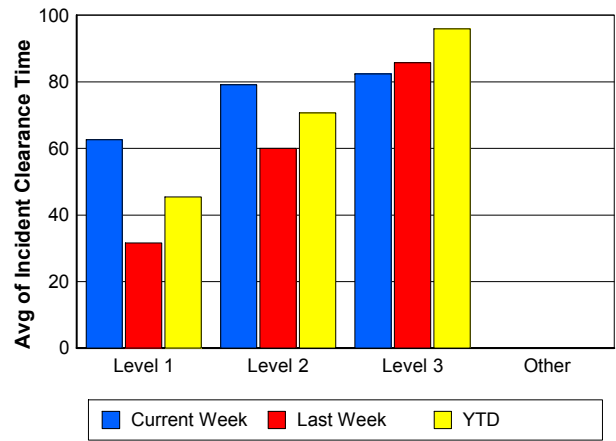
### Road Ranger / SIRV Response Time



### Roadway Clearance Time (2A)



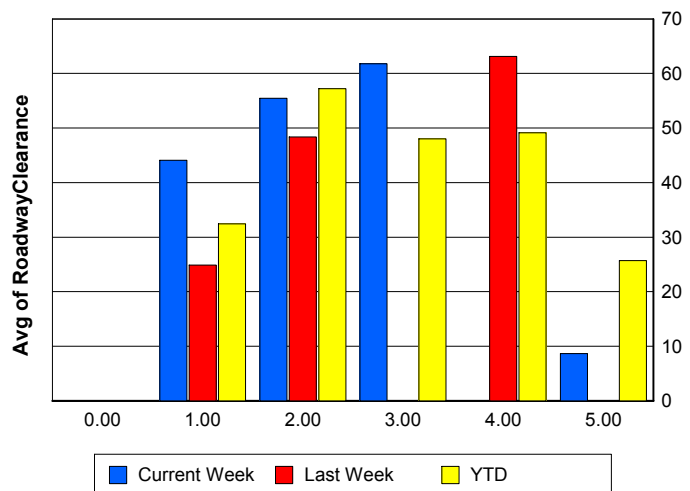
### Incident Clearance Time (3B)



### Roadway Clearance by Maximum Number of Lanes Blocked

	Current Week	Last Week	YTD
0			
1	44.09	24.87	32.42
2	55.43	48.35	57.23
3	61.80	0.00	47.99
4	0.00	63.15	49.11
5	8.63	0.00	25.69

### Roadway Clearance Time (2A)



## Performance Measures by Roadway

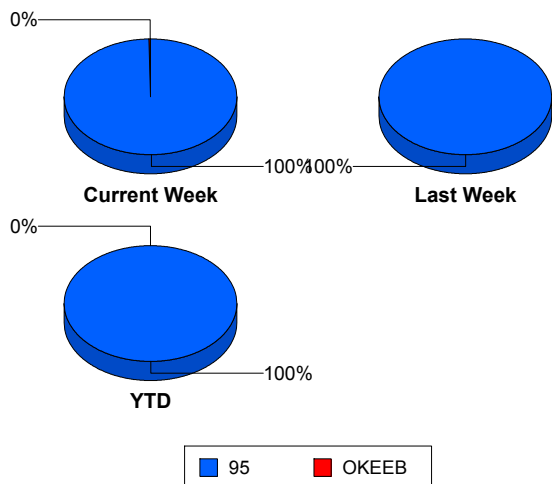
95

	<u>Current Week</u>	<u>Last Week</u>	<u>YTD</u>
Number of Events	457	437	2,268
Number of Incidents	32	19	122
TMC Detection (min.)	0.00	0.00	0.00
TMC Verification (min.)	4.76	3.89	4.76
TMC Response (min.)	7.07	5.56	6.88
RR Dispatch Time (min.)	2.20	1.55	2.48
RR Resp. Time (min.)	4.96	4.01	4.43
Event Clearance (min.)	23.69	20.79	22.26
Roadway Clear. (min.)	48.74	28.12	40.71
Incident Clearance (min.)	73.56	43.27	61.14
# of Events w/ RR/SIRV	429	427	2,191
RR/SIRV Responses	429	427	2,191
RR/SIRV Activities	463	461	2,366

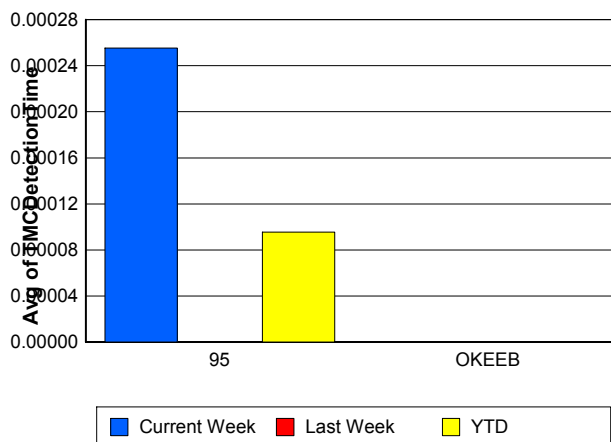
OKEEB

	<u>Current Week</u>	<u>YTD</u>
Number of Events	1	1
Number of Incidents	0	0
TMC Detection (min.)	0.00	0.00
TMC Verification (min.)	0.00	0.00
TMC Response (min.)	0.00	0.00
RR Dispatch Time (min.)	0.00	0.00
RR Resp. Time (min.)	0.00	0.00
Event Clearance (min.)	18.45	18.45
Roadway Clear. (min.)		
Incident Clearance (min.)		
# of Events w/ RR/SIRV	1	1
RR/SIRV Responses	1	1
RR/SIRV Activities	1	1

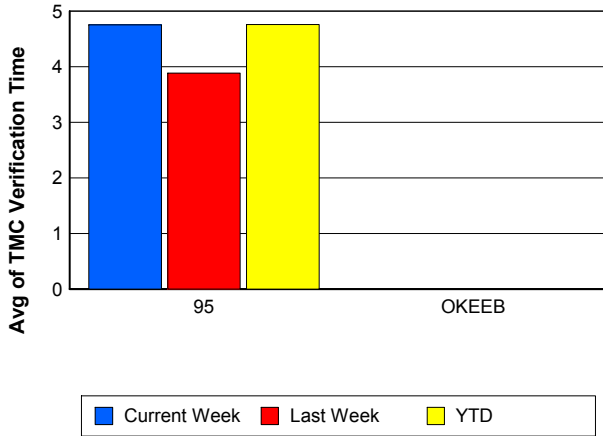
### Number of Events / Roadway



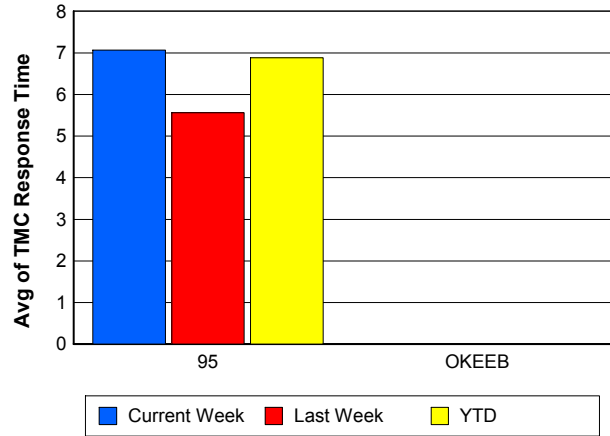
### TMC Detection Time



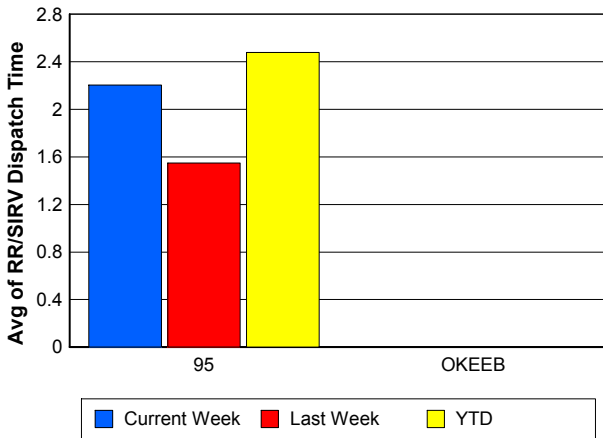
### TMC Verification Time



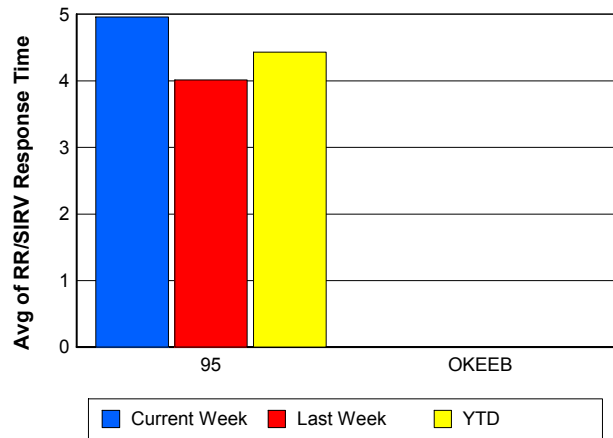
### TMC Response Time



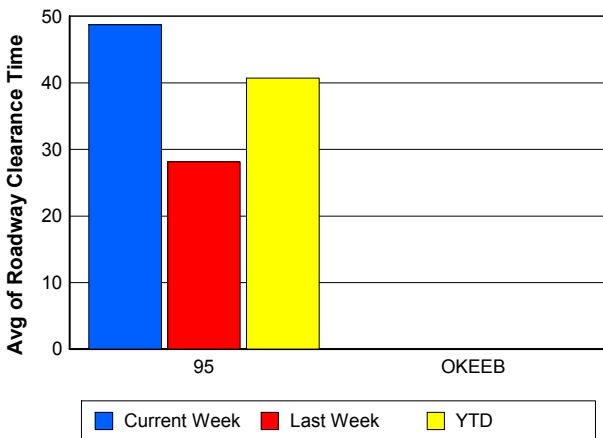
### Road Ranger / SIRV Dispatch Time



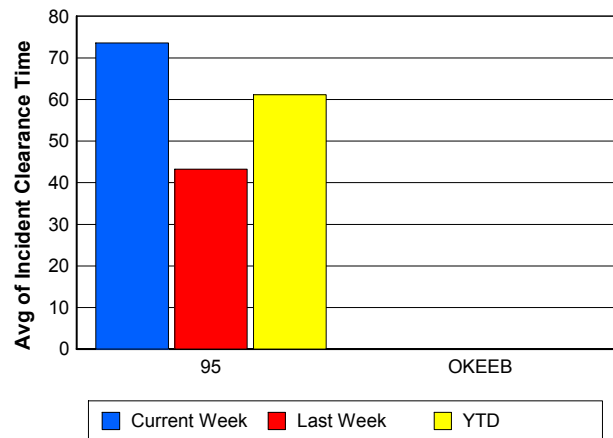
### Road Ranger / SIRV Response Time



### Roadway Clearance Time (2A)



### Incident Clearance Time (3B)



## Performance Measures by Event Type

### Accident

	<u>Current Week</u>	<u>Last Week</u>	<u>YTD</u>
Number of Events	62	33	199
Number of Incidents	26	13	86
TMC Detection (min.)	0.00	0.00	0.00
TMC Verification (min.)	7.47	6.50	8.02
TMC Response (min.)	11.86	8.68	10.97
RR Dispatch Time (min.)	2.51	1.50	2.21
RR Response Time (min.)	9.42	7.18	8.78
Event Clearance (min.)	55.75	48.88	55.83
Roadway Clearance (min.)	45.75	24.97	42.41
Incident Clearance (min.)	75.29	45.86	68.15
# of Events w/ RR/SIRV	59	32	193
RR/SIRV Assists	59	32	193
RR/SIRV Activities	72	35	227

### Debris on Roadway

	<u>Current Week</u>	<u>Last Week</u>	<u>YTD</u>
Number of Events	35	24	144
Number of Incidents	0	1	3
TMC Detection (min.)	0.00	0.00	0.00
TMC Verification (min.)	14.97	7.45	8.93
TMC Response (min.)	14.94	7.43	9.04
RR Dispatch Time (min.)	5.96	1.00	3.08
RR Response Time (min.)	8.97	6.44	5.94
Event Clearance (min.)	17.75	10.47	12.13
Roadway Clearance (min.)		5.60	6.66
Incident Clearance (min.)		7.08	16.98
# of Events w/ RR/SIRV	35	24	142
RR/SIRV Assists	35	24	142
RR/SIRV Activities	36	25	143

### Disabled Vehicle

	<u>Current Week</u>	<u>Last Week</u>	<u>YTD</u>
Number of Events	336	355	1,814
Number of Incidents	4	4	25
TMC Detection (min.)	0.00	0.00	0.00
TMC Verification (min.)	3.53	3.56	4.33
TMC Response (min.)	5.21	4.84	6.11
RR Dispatch Time (min.)	1.71	1.49	2.46
RR Response Time (min.)	3.64	3.35	3.70
Event Clearance (min.)	18.04	18.25	19.22
Roadway Clearance (min.)	80.11	46.39	35.15
Incident Clearance (min.)	83.44	49.92	44.22
# of Events w/ RR/SIRV	319	349	1,775
RR/SIRV Assists	319	349	1,775
RR/SIRV Activities	344	384	1,939

## Emergency Vehicles

	<u>Last Week</u>	<u>YTD</u>
Number of Events	2	3
Number of Incidents	1	2
TMC Detection (min.)	0.00	0.00
TMC Verification (min.)	0.00	0.00
TMC Response (min.)	0.00	0.00
RR Dispatch Time (min.)	0.00	0.00
RR Response Time (min.)	0.00	0.00
Event Clearance (min.)	21.15	84.35
Roadway Clearance (min.)	18.42	114.12
Incident Clearance (min.)	19.12	114.93
# of Events w/ RR/SIRV	2	2
RR/SIRV Assists	2	2
RR/SIRV Activities	2	2

## Other

	<u>Current Week</u>	<u>Last Week</u>	<u>YTD</u>
Number of Events	19	21	88
Number of Incidents	0	0	0
TMC Detection (min.)	0.00	0.00	0.00
TMC Verification (min.)	0.00	1.96	0.47
TMC Response (min.)	10.83	13.90	11.88
RR Dispatch Time (min.)	2.91	3.09	2.83
RR Response Time (min.)	6.96	10.33	8.28
Event Clearance (min.)	29.94	32.29	21.89
Roadway Clearance (min.)			
Incident Clearance (min.)			
# of Events w/ RR/SIRV	13	18	62
RR/SIRV Assists	13	18	62
RR/SIRV Activities	9	14	39

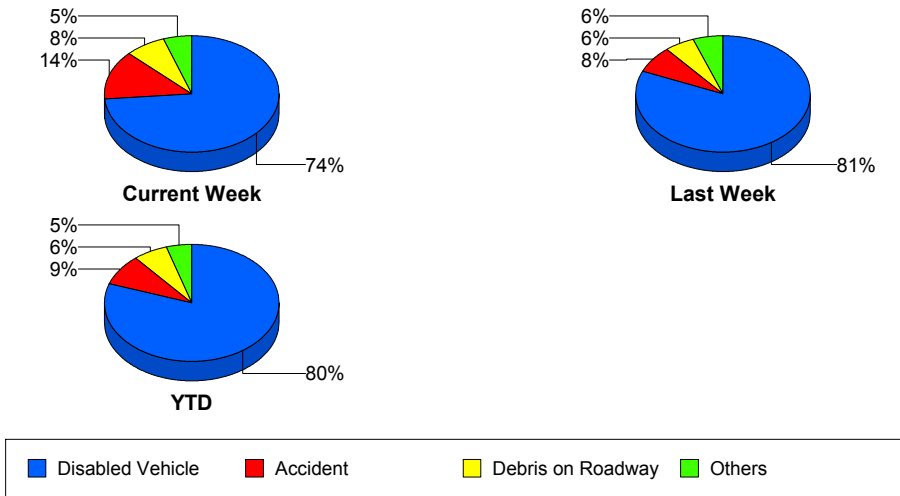
## Police Activity

	<u>Current Week</u>	<u>Last Week</u>	<u>YTD</u>
Number of Events	3	1	11
Number of Incidents	1	0	5
TMC Detection (min.)	0.00	0.00	0.00
TMC Verification (min.)	0.00	0.00	0.00
TMC Response (min.)			21.75
RR Dispatch Time (min.)	1.75	1.02	0.94
RR Response Time (min.)			20.96
Event Clearance (min.)	26.14	6.67	41.66
Roadway Clearance (min.)	11.72		30.78
Incident Clearance (min.)	15.80		33.02
# of Events w/ RR/SIRV	1	1	8
RR/SIRV Assists	1	1	8
RR/SIRV Activities	0	0	6

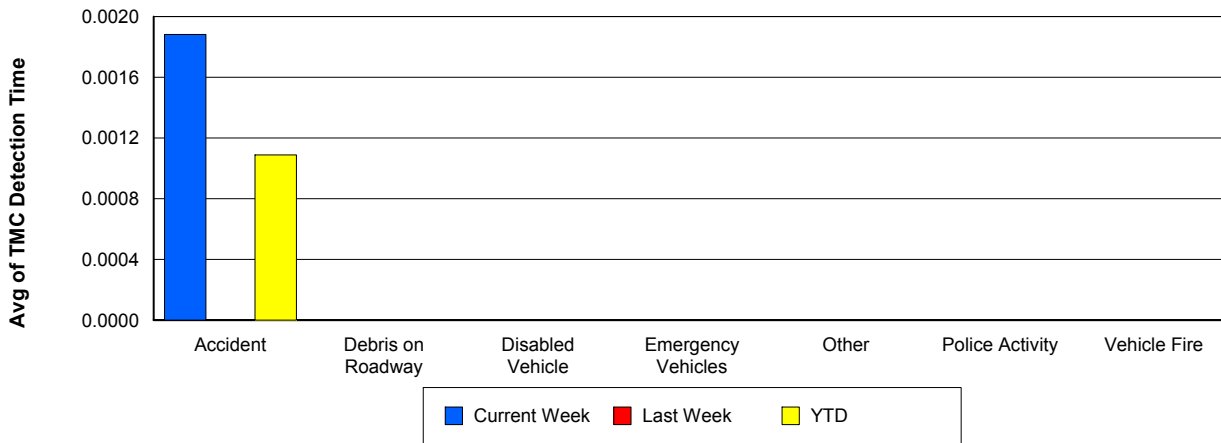
## Vehicle Fire

	<u>Current Week</u>	<u>YTD</u>
Number of Events	2	4
Number of Incidents	1	1
TMC Detection (min.)	0.00	0.00
TMC Verification (min.)	0.00	4.79
TMC Response (min.)	2.37	5.96
RR Dispatch Time (min.)	1.46	2.15
RR Response Time (min.)	0.91	3.81
Event Clearance (min.)	29.09	26.24
Roadway Clearance (min.)	38.03	38.03
Incident Clearance (min.)	46.67	46.67
# of Events w/ RR/SIRV	2	4
RR/SIRV Assists	2	4
RR/SIRV Activities	2	4

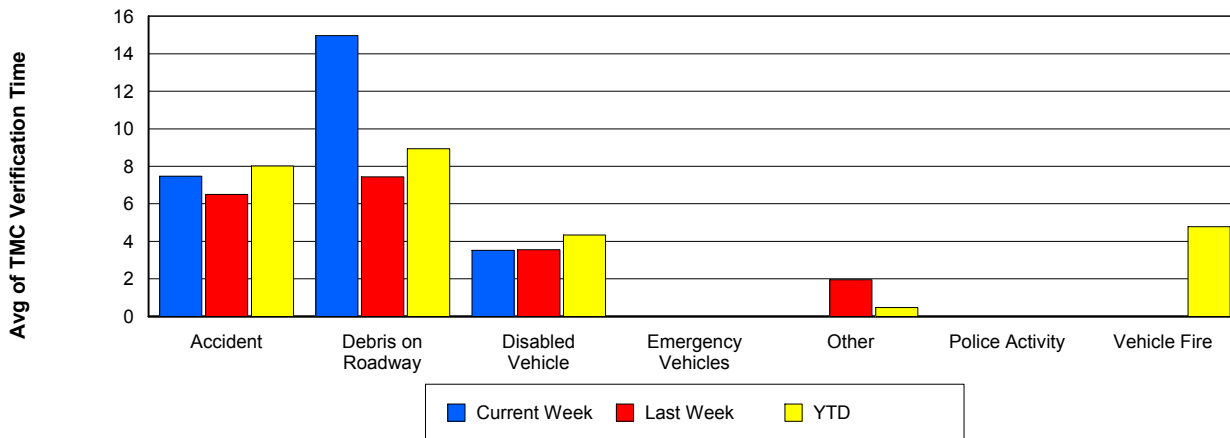
## Number of Events / Event Type



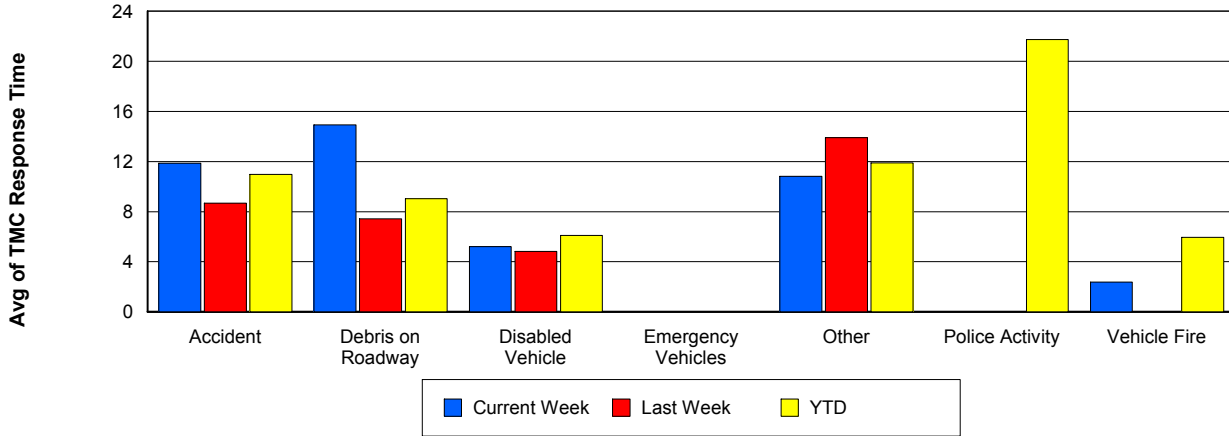
## TMC Detection Time



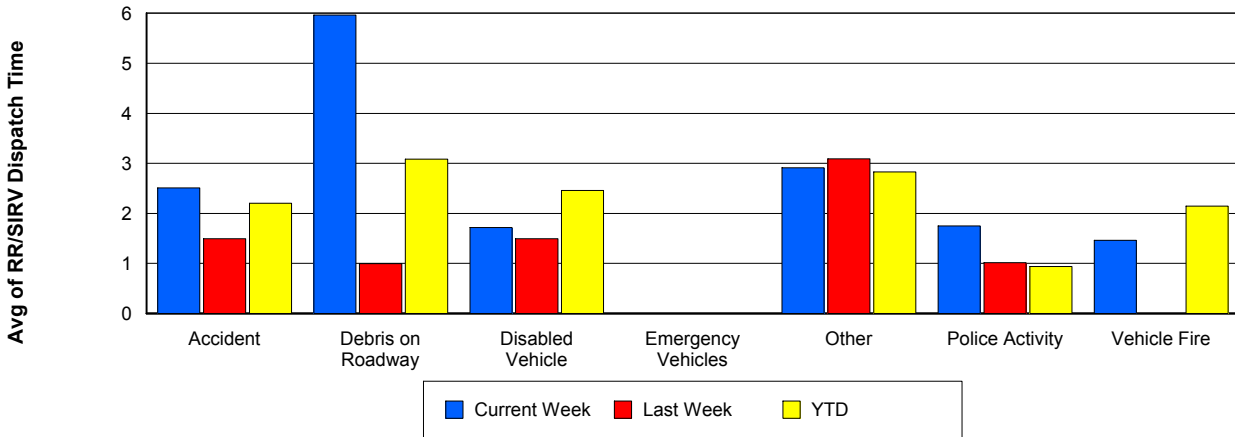
## TMC Verification Time



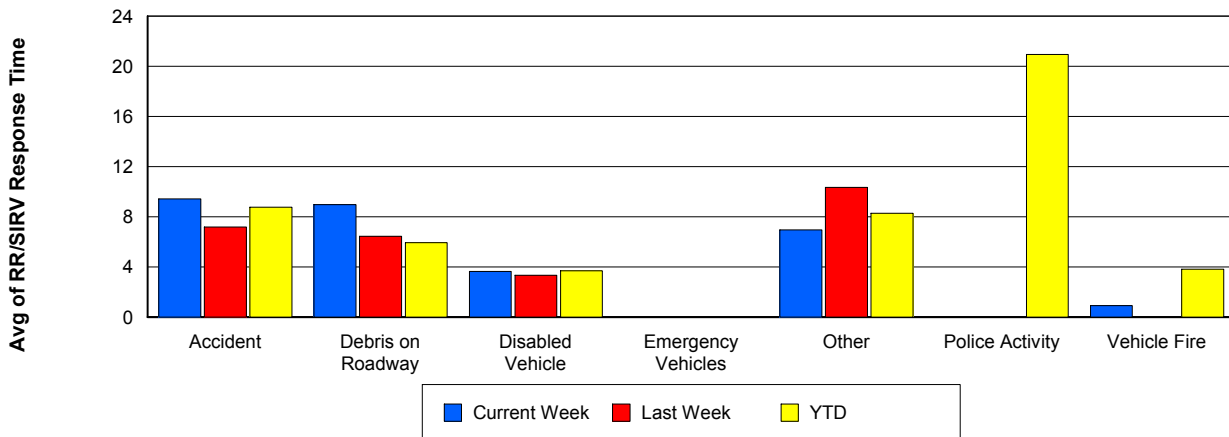
## TMC Response Time



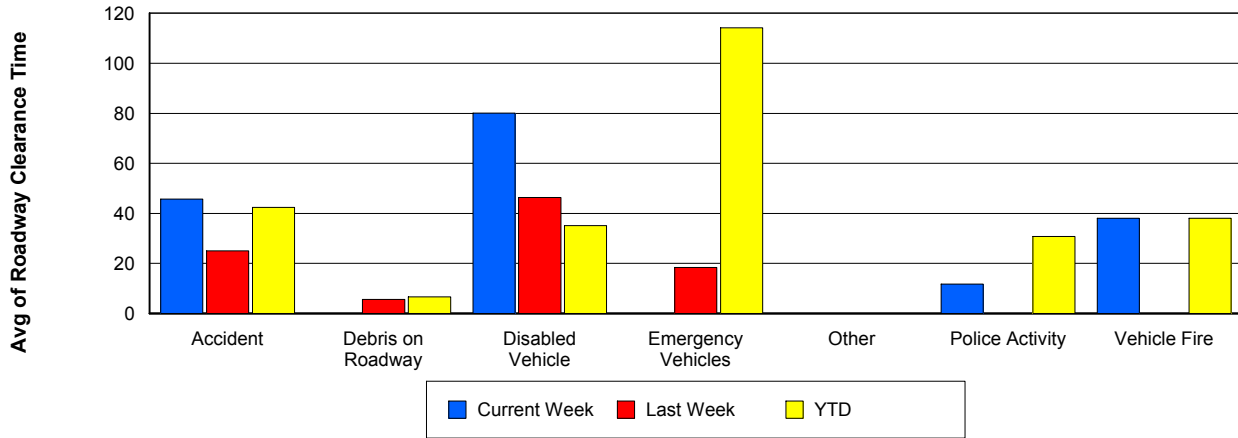
## Road Ranger / SIRV Dispatch Time



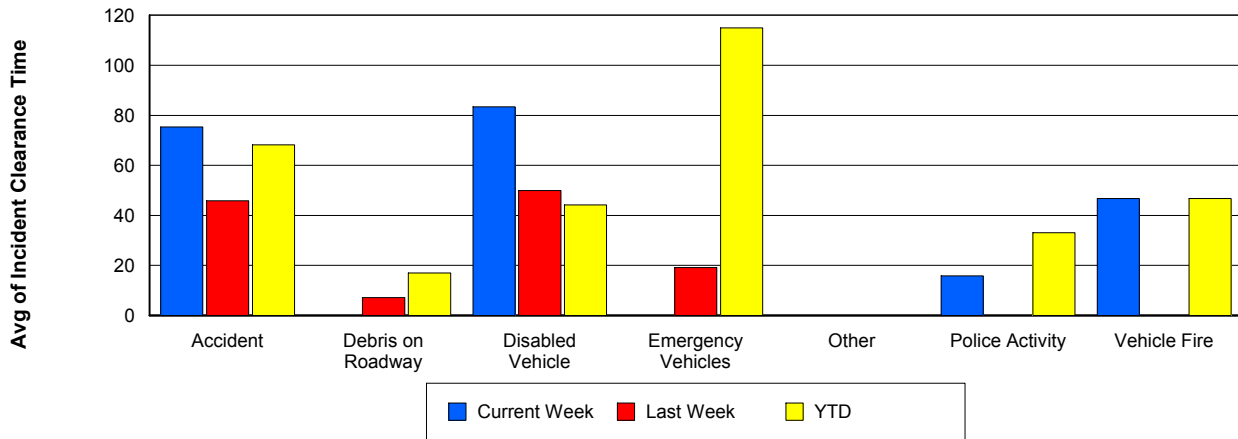
## Road Ranger / SIRV Response Time



## Roadway Clearance Time (2A)



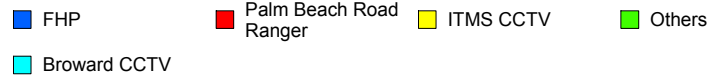
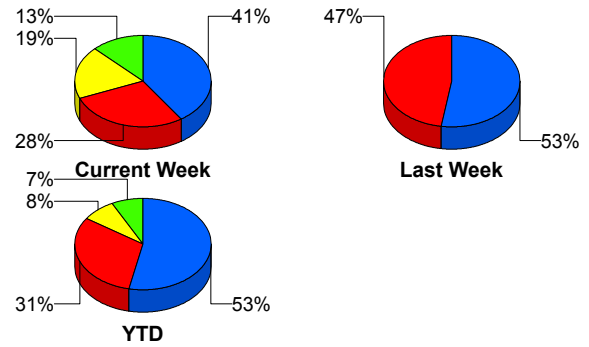
## Incident Clearance Time (3B)



## Incident Detection Methods

	Current Week	Last Week	YTD
Broward Road Ranger	0	0	2
Broward TMC	2	0	2
District 4	2	0	3
FHP	13	10	65
ITMS CCTV	6	0	10
Motorist	0	0	2
Palm Beach Road Ran	9	9	38
<b>Total</b>	<b>32</b>	<b>19</b>	<b>122</b>

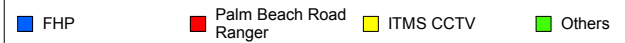
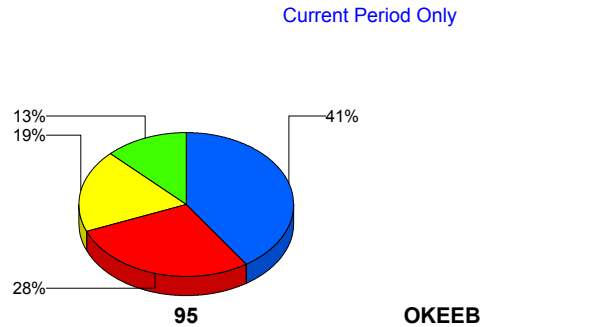
### Total Incidents by Detection Method



## Incident Detection Methods by Roadway

		Current Week	Last Week	YTD
95	Broward Road Ranger	0	0	2
	Broward TMC	2	0	2
	District 4	2	0	3
	FHP	13	10	65
	ITMS CCTV	6	0	10
	Motorist	0	0	2
	Palm Beach Road Ran	9	9	38
	<b>Total</b>	<b>32</b>	<b>19</b>	<b>122</b>
<b>Total</b>		<b>32</b>	<b>19</b>	<b>122</b>

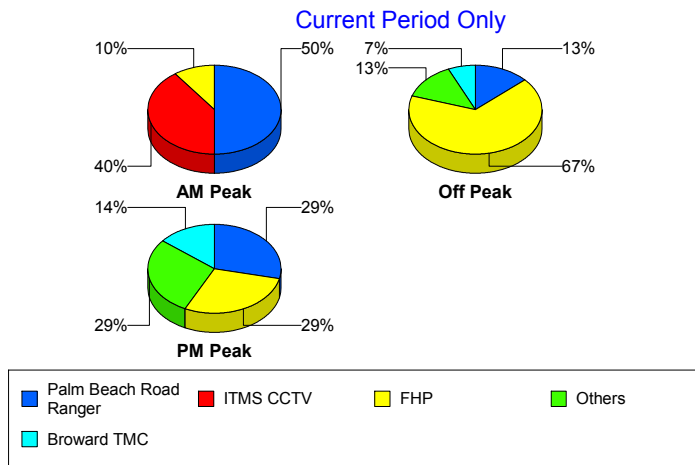
### Total Events by Roadway and Detection Method



## Incident Detection Methods by Peak Period

		Current Week	Last Week	YTD
AM Peak	Broward Road Ranger	0	0	1
	District 4	0	0	1
	FHP	1	2	17
	ITMS CCTV	4	0	4
	Palm Beach Road Ran	5	2	13
	<b>Total</b>	<b>10</b>	<b>4</b>	<b>36</b>
Off Peak	Broward Road Ranger	0	0	1
	Broward TMC	1	0	1
	District 4	1	0	1
	FHP	10	4	31
	ITMS CCTV	1	0	5
	Motorist	0	0	1
	Palm Beach Road Ran	2	5	16
	<b>Total</b>	<b>15</b>	<b>9</b>	<b>56</b>
PM Peak	Broward TMC	1	0	1
	District 4	1	0	1
	FHP	2	4	17
	ITMS CCTV	1	0	1
	Motorist	0	0	1
	Palm Beach Road Ran	2	2	9
	<b>Total</b>	<b>7</b>	<b>6</b>	<b>30</b>
<b>Total</b>	<b>32</b>	<b>19</b>	<b>122</b>	

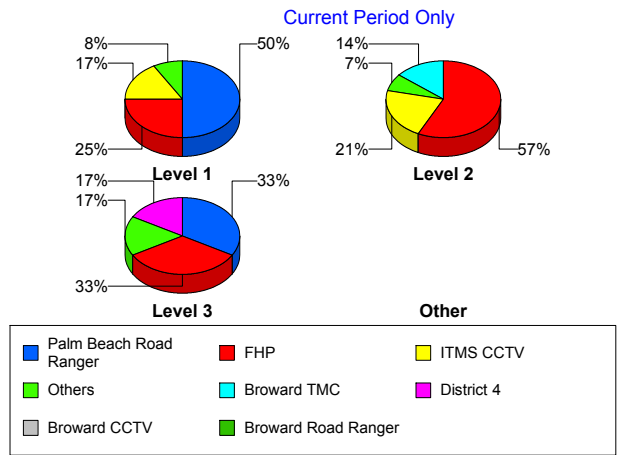
Total Events by Peak Period and Detection Method



## Incident Detection Methods by Severity

		Current Week	Last Week	YTD
Level 1	Broward Road Ranger	0	0	2
	District 4	1	0	2
	FHP	3	5	23
	ITMS CCTV	2	0	5
	Motorist	0	0	2
	Palm Beach Road Ran	6	8	27
	<b>Total</b>	<b>12</b>	<b>13</b>	<b>61</b>
Level 2	Broward TMC	2	0	2
	FHP	8	4	34
	ITMS CCTV	3	0	4
	Palm Beach Road Ran	1	0	6
	<b>Total</b>	<b>14</b>	<b>4</b>	<b>46</b>
Level 3	District 4	1	0	1
	FHP	2	1	8
	ITMS CCTV	1	0	1
	Palm Beach Road Ran	2	1	5
	<b>Total</b>	<b>6</b>	<b>2</b>	<b>15</b>
<b>Total</b>	<b>32</b>	<b>19</b>	<b>122</b>	

**Total Events by Severity and Detection Method**



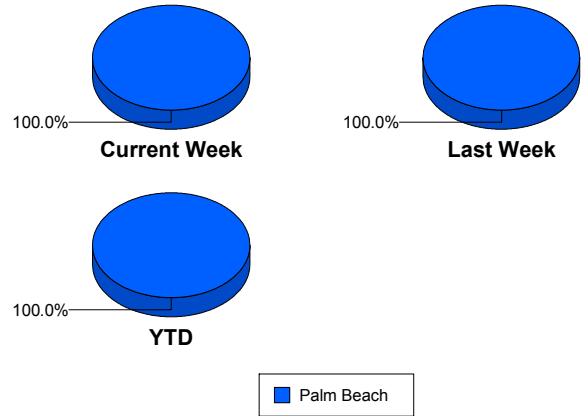
# Road Ranger / SIRV Performance Measures

## Road Ranger / SIRV Performance By County

Values presented are:  
 - Total Events with a RR/SIRV Response  
 - Total RR/SIRV Responses,  
 - Total Activities Performed

	Current We	Last Week	YTD
Palm Beach	<b>553</b>	<b>550</b>	<b>2,894</b>
	<b>577</b>	<b>575</b>	<b>2,987</b>
	<b>603</b>	<b>605</b>	<b>3,161</b>

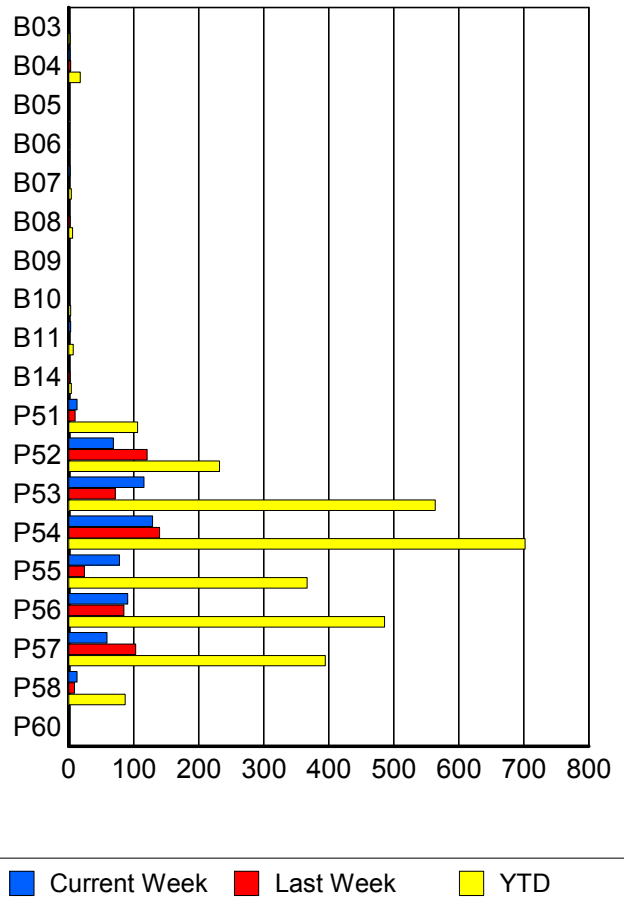
RR/SIRV Responses per County



## Road Ranger / SIRV Performance By Truck

	Current We	Last Week	YTD
B03	1	1	2
	1	1	2
	2	1	3
B04	2	3	18
	2	3	18
	2	3	19
B05	0	1	1
	0	1	1
	0	1	1
B06	0	0	1
	0	0	1
	0	0	3
B07	2	1	4
	2	1	4
	2	1	4
B08	1	2	6
	1	2	6
	1	2	6
B09	0	0	1
	0	0	1
	0	0	1
B10	0	0	3
	0	0	3
	0	0	3
B11	3	1	7
	3	1	7
	3	1	7

RR/SIRV Responses per Truck



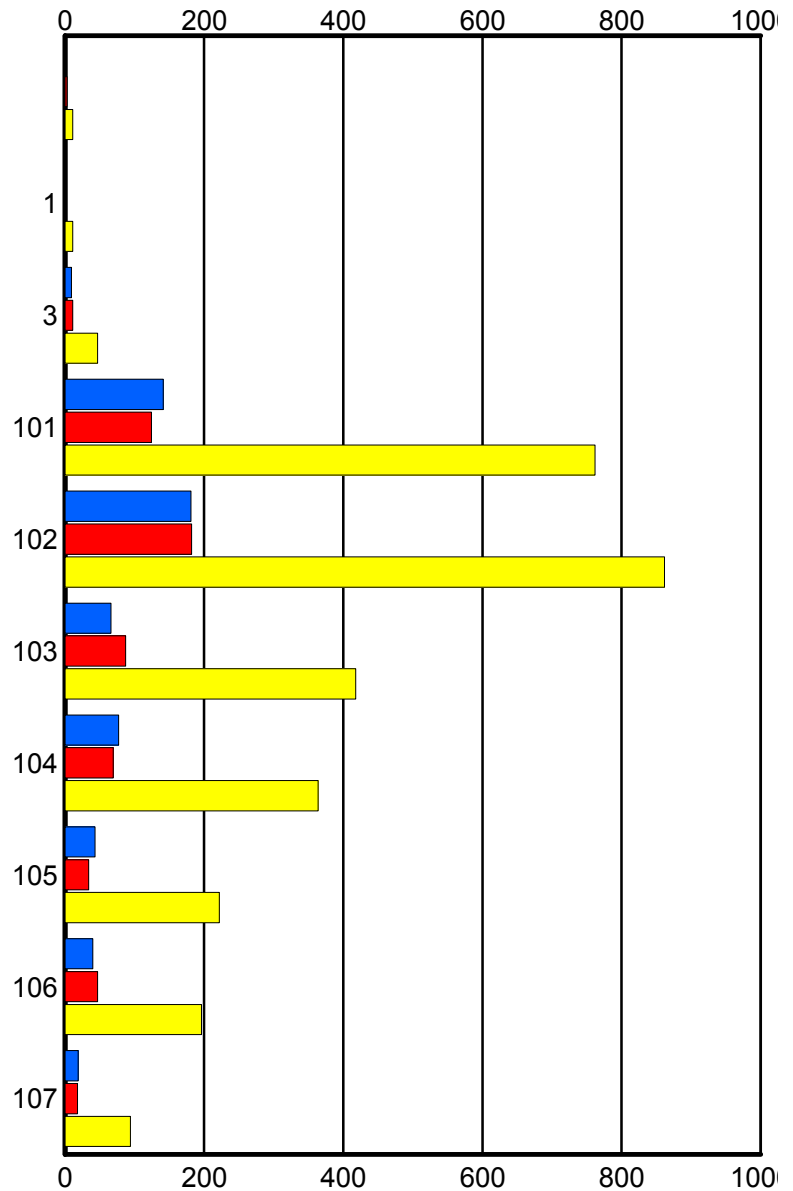
	Current We	Last Week	YTD
B14	0	2	4
	0	2	4
	0	2	4
P51	13	10	106
	13	10	106
	13	10	111
P52	69	119	230
	69	121	232
	73	131	247
P53	114	72	559
	116	72	564
	123	73	602
P54	126	136	689
	129	140	702
	138	146	738
P55	78	23	365
	78	24	367
	78	26	382
P56	90	84	480
	91	85	486
	95	93	520
P57	56	98	384
	59	103	395
	60	105	411
P58	13	9	87
	13	9	87
	13	10	98
P60	0	0	1
	0	0	1
	0	0	1

### Road Ranger / SIRV Performance By Beat

	Current We	Last Week	YTD
	1	3	11
	1	3	11
	1	3	11
1	0	0	10
	0	0	11
	0	0	11
3	9	11	46
	9	11	47
	10	11	51
101	134	124	748
	141	124	762
	146	127	802
102	180	175	848
	181	182	862
	190	197	914
103	66	85	415
	66	87	418
	69	91	437
104	75	66	358
	77	69	364
	82	71	385
105	43	34	220
	43	34	222
	45	35	238
106	40	43	192
	40	47	196
	41	49	205
107	19	18	94
	19	18	94
	19	21	107

Values presented are:  
 - Total Events with a RR/SIRV Response  
 - Total RR/SIRV Responses,  
 - Total Activities Performed

### RR/SIRV Responses per Beat



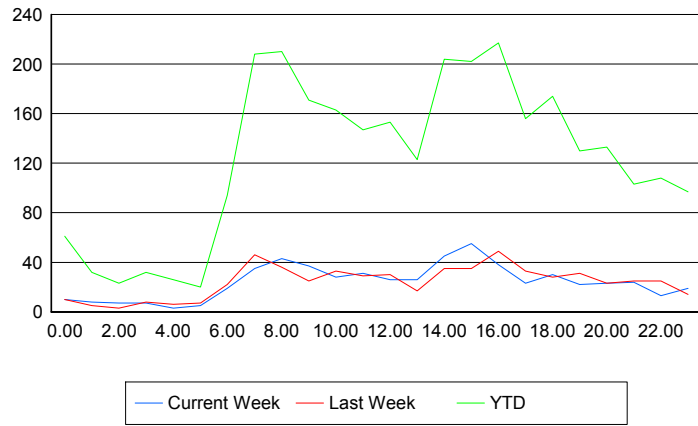
■ Current Week   
 ■ Last Week   
 ■ YTD

## Road Ranger / SIRV Performance By Time of Day

Values presented are:  
 - Total Events with a RR/SIRV Response  
 - Total RR/SIRV Responses,  
 - Total Activities Performed

	Current We	Last Week	YTD
12AM-1AM	10 10 10	10 10 11	60 61 67
1AM-2AM	8 8 8	5 5 6	32 32 33
2AM-3AM	6 7 8	3 3 3	22 23 24
3AM-4AM	7 7 7	8 8 9	32 32 34
4AM-5AM	3 3 4	6 6 9	26 26 30
5AM-6AM	2 5 5	4 7 8	14 20 21
6AM-7AM	16 19 22	19 22 23	86 94 103
7AM-8AM	34 35 36	44 46 47	203 208 220
8AM-9AM	38 43 44	34 36 38	199 210 221
9AM-10AM	37 37 38	22 25 26	167 171 178
10AM-11AM	28 28 28	32 33 34	158 163 170
11AM-12PM	30 31 35	29 29 30	142 147 156
12PM-1PM	24 26 27	30 30 32	147 153 159

## Number of Responses / Hour of the Day



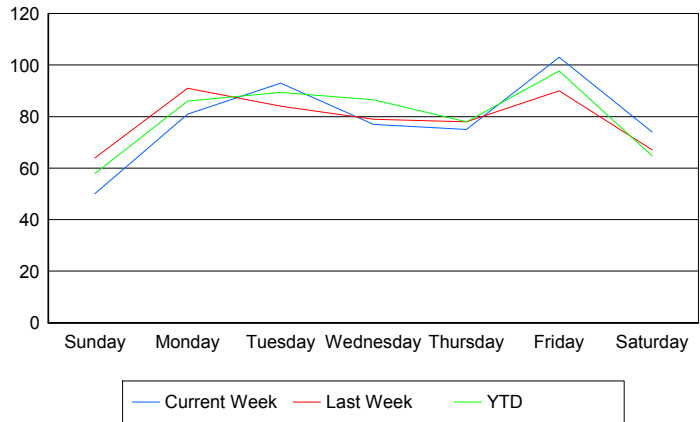
	Current We	Last Week	YTD
1PM-2PM	25	16	116
	26	17	123
	27	18	132
2PM-3PM	44	35	199
	45	35	204
	48	38	214
3PM-4PM	52	35	197
	55	35	202
	56	37	212
4PM-5PM	38	46	209
	38	49	217
	39	50	230
5PM-6PM	23	32	154
	23	33	156
	24	34	169
6PM-7PM	29	28	172
	30	28	174
	32	31	186
7PM-8PM	21	31	127
	22	31	130
	22	31	138
8PM-9PM	23	22	132
	23	23	133
	24	23	138
9PM-10PM	23	23	99
	24	25	103
	25	26	107
10PM-11PM	13	23	105
	13	25	108
	14	25	115
11PM-12AM	19	13	96
	19	14	97
	20	16	104

## Road Ranger / SIRV Performance By Day of Week

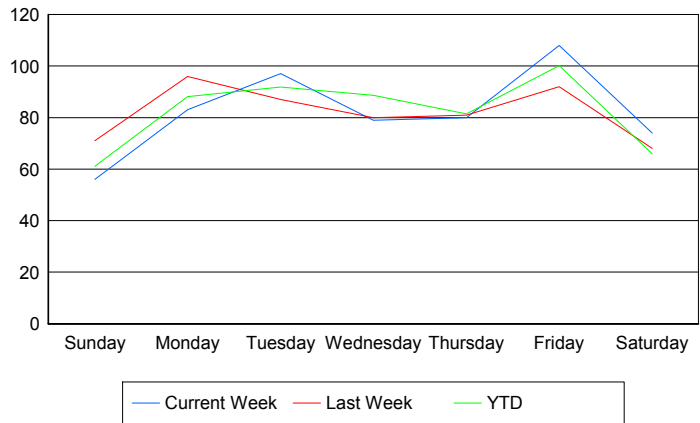
Values presented are:  
 - Total Events with a RR/SIRV Response  
 - Total RR/SIRV Responses,  
 - Total Activities Performed

	Current We	Last Week	YTD
Sunday	50	64	285
	56	71	300
	61	76	315
Monday	81	91	409
	83	96	420
	89	97	445
Tuesday	93	84	444
	97	87	457
	100	92	478
Wednesday	77	79	426
	79	80	436
	84	85	466
Thursday	75	78	388
	80	81	405
	82	88	441
Friday	103	90	561
	108	92	576
	109	97	604
Saturday	74	67	385
	74	68	393
	78	70	412

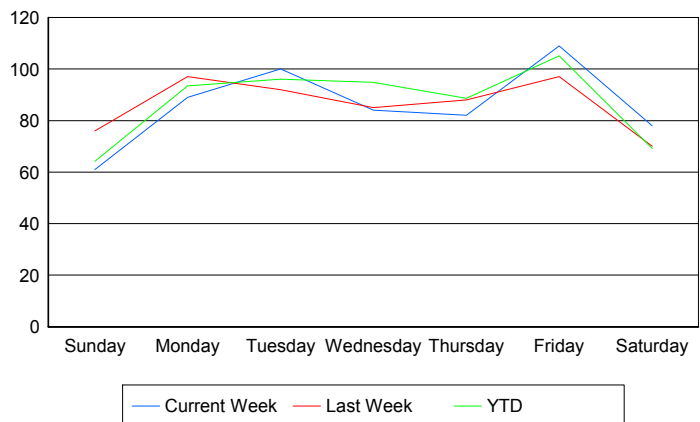
### Avg # of events with a RR/SIRV Response per Day of the Week



### Avg # of RR/SIRV Responses per Day of the Week



### Avg # of RR/SIRV Activities Performed per Day of the Week



### Road Ranger / SIRV Responses per Time of Day and Day of Week

