



Weekly Performance Measures Report Palm Beach County



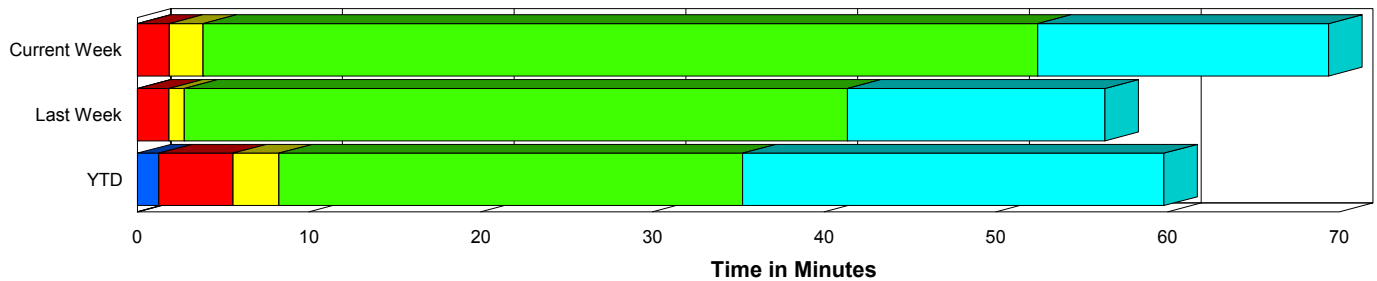
Created on:
April 20, 2009
9:15 am

Period From Apr 12, 2009 to Apr 18, 2009

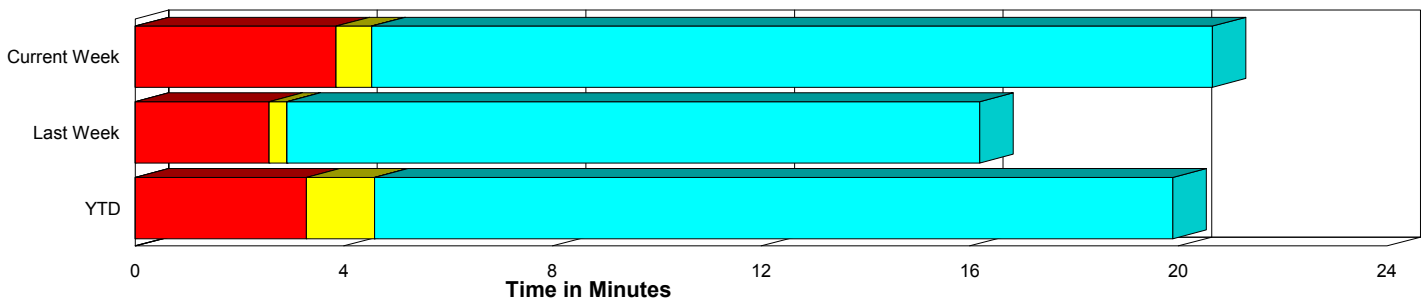
Performance Measures Summary

	Traffic Events (No Lanes Blocked)			Incidents (Lanes Blocked)		
	<u>This Week</u>	<u>Last Week</u>	<u>YTD</u>	<u>This Week</u>	<u>Last Week</u>	<u>YTD</u>
Number of Events	271	274	4,342	31	23	311
TMC Detection (min.)	0.00	0.00	0.00	0.00	0.00	1.25
TMC Verification (min.)	3.85	2.57	3.28	1.86	1.84	4.33
TMC Response (min.)	5.44	3.61	5.56	4.54	3.39	6.41
RR Dispatch Time (min.)	0.83	0.83	1.83	1.72	1.43	2.67
RR Response Time (min.)	4.61	2.79	3.77	2.81	1.96	3.74
Roadway Clearance (min.)				53.23	42.30	38.23
Event Clearance (min.)	21.56	16.90	20.86	69.84	57.28	62.56
# of Events w/ RR/SIRV	231	227	3,448	19	17	251
RR/SIRV Responses	231	227	3,448	19	17	251
RR/SIRV Activities	256	241	3,733	24	24	368

Incident Clearance Time-Line



Traffic Event (Non-Lane Blockage) Time-Line



■ Avg. TMC Detection Time	■ Avg. Time from TMC Response to Roadway Clearance*
■ Avg. Time from TMC Detection to TMC Verification	■ Avg. Time from Roadway Clearance to Incident/Event Clearance**
■ Avg. Time from TMC Verification to TMC Response	

* Roadway clearance equals all travel lanes open

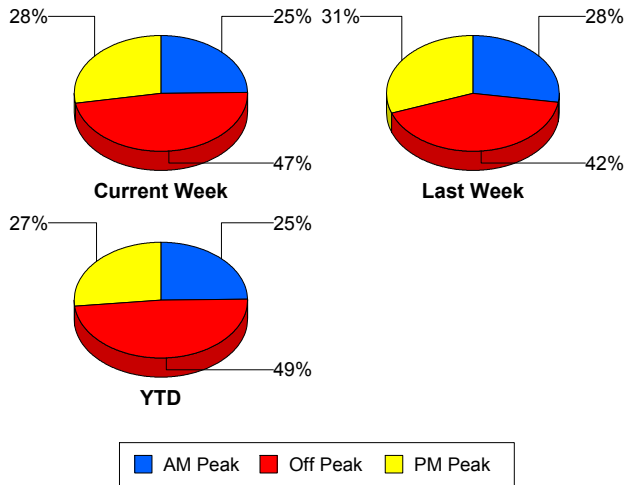
** Incident clearance equals time when last responder has left the scene

Performance Measures by Peak Period

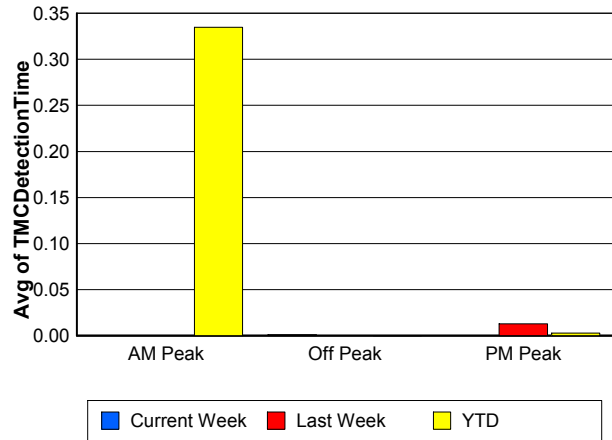
Note: AM peak period is defined as 6am to 10am and PM peak period is defined as 3pm to 7pm.

	AM Peak			Off Peak			PM Peak		
	<u>Current Week</u>	<u>Last Week</u>	<u>YTD</u>	<u>Current Week</u>	<u>Last Week</u>	<u>YTD</u>	<u>Current Week</u>	<u>Last Week</u>	<u>YTD</u>
Number of Events	75	82	1,151	143	124	2,257	84	91	1,245
Number of Incidents	8	7	86	19	9	137	4	7	88
TMC Detection (min.)	0.00	0.00	0.33	0.00	0.00	0.00	0.00	0.01	0.00
TMC Verification (min.)	3.67	1.91	3.29	3.19	2.41	2.75	4.41	3.18	4.51
TMC Response (min.)	5.27	3.27	4.25	5.55	3.88	6.73	5.24	3.62	5.51
RR Dispatch Time (min.)	1.14	0.92	1.07	0.60	1.20	2.88	1.06	0.51	1.41
RR Response Time (min.)	4.13	2.37	3.24	4.95	2.68	3.89	4.18	3.14	4.11
Event Clearance (min.)	23.08	19.01	21.30	34.26	21.26	26.83	16.40	19.27	20.05
Roadway Clearance (min.)	19.02	26.46	39.54	74.62	41.07	43.22	20.08	59.74	29.18
Incident Clearance (min.)	44.67	52.02	63.44	87.25	52.19	71.74	37.50	69.10	47.42
# of Events w/ RR/SIRV	74	79	1,094	100	83	1,452	76	82	1,153
RR/SIRV Responses	74	79	1,094	100	83	1,452	76	82	1,153
RR/SIRV Activities	80	88	1,251	115	91	1,606	85	86	1,244

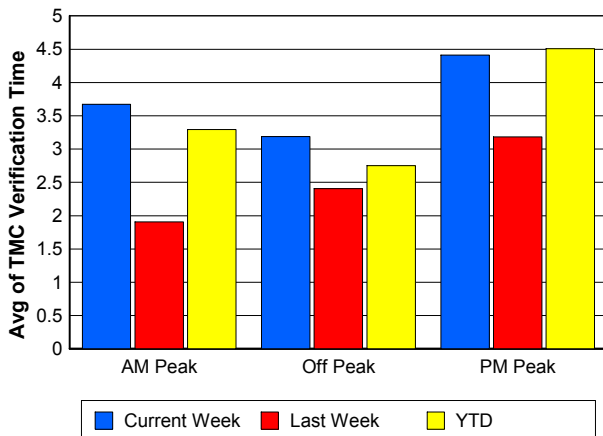
Number of Events / Peak Period



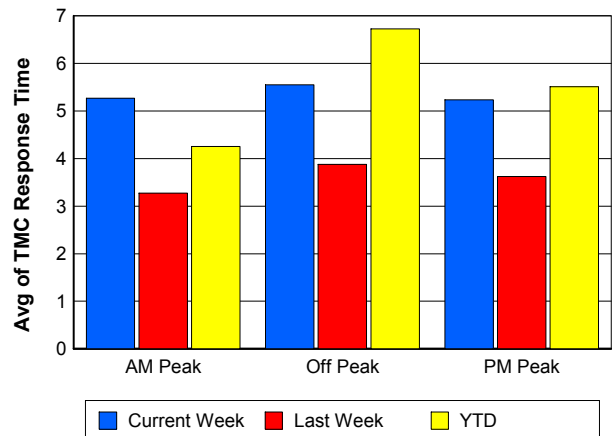
TMC Detection Time



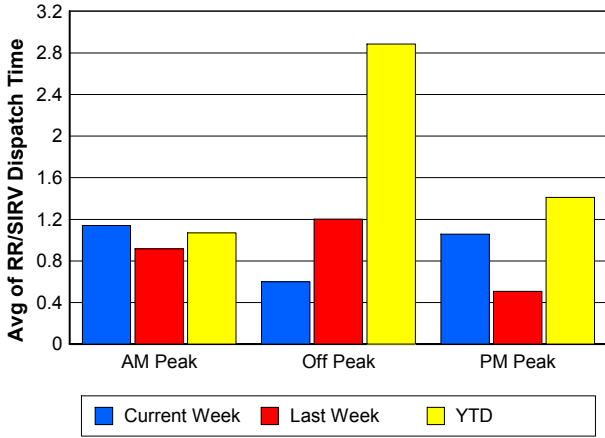
TMC Verification Time



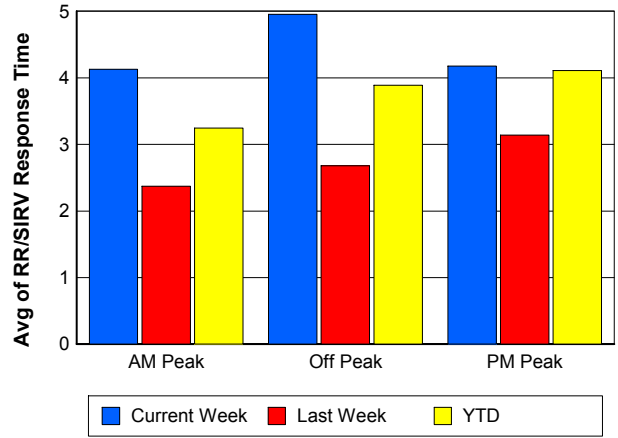
TMC Response Time



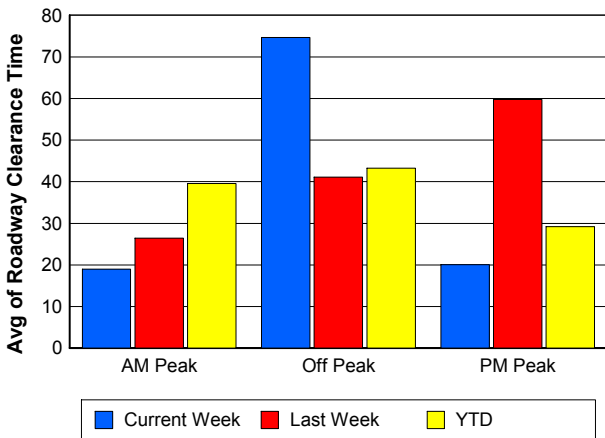
Road Ranger / SIRV Dispatch Time



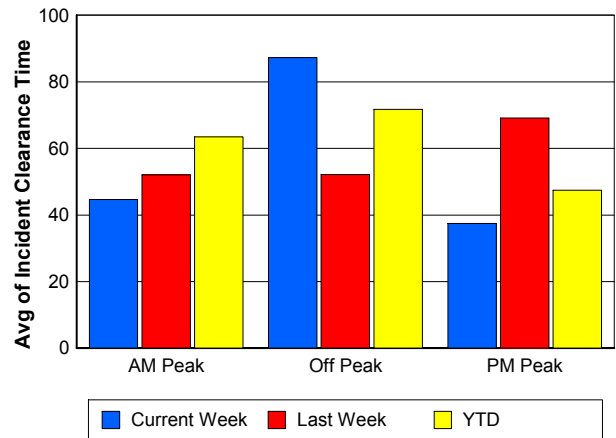
Road Ranger / SIRV Response Time



Roadway Clearance Time (2A)



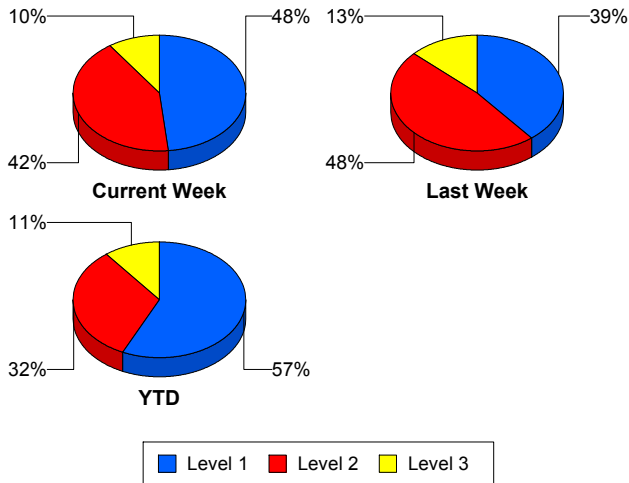
Incident Clearance Time (3B)



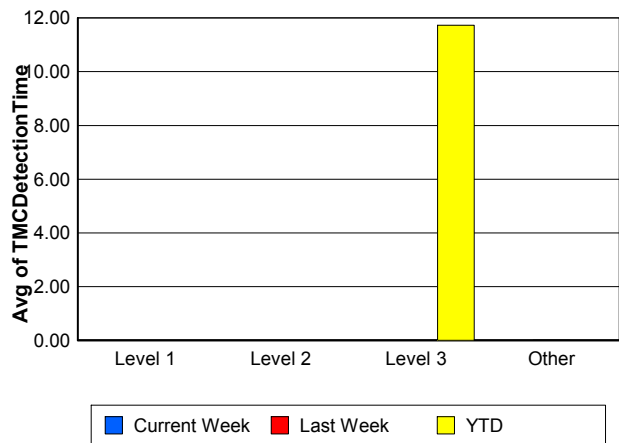
Performance Measures by Severity

	Level 1			Level 2			Level 3			Other		
	<u>This Week</u>	<u>Last Week</u>	<u>YTD</u>	<u>This Week</u>	<u>Last Week</u>	<u>YTD</u>	<u>This Week</u>	<u>Last Week</u>	<u>YTD</u>	<u>This Week</u>	<u>Last Week</u>	<u>YTD</u>
Number of Events	15	9	177	13	11	101	3	3	33	271	274	4,342
Number of Incidents	15	9	177	13	11	101	3	3	33	0	0	0
TMC Detection (min.)	0.00	0.00	0.00	0.00	0.00	0.00	0.00	0.00	11.73	0.00	0.00	0.00
TMC Verification (min.)	1.73	2.00	1.98	1.68	2.21	4.11	3.34	0.00	18.04	3.85	2.57	3.28
TMC Response (min.)	3.48	2.34	3.60	5.17	5.61	8.55	10.00	1.76	18.72	5.44	3.61	5.56
RR Dispatch Time (min.)	0.62	0.61	0.96	3.18	2.44	3.13	1.07	1.61	13.11	0.83	0.83	1.83
RR Resp. Time (min.)	2.86	1.73	2.65	1.99	3.17	5.42	8.93	0.14	5.61	4.61	2.79	3.77
Event Clearance (min.)	26.99	30.04	39.55	81.29	68.71	75.88	234.53	97.11	145.27	21.56	16.90	20.86
Roadway Clear. (min.)	11.84	14.38	14.02	59.36	52.05	52.13	233.64	90.34	125.53			
Incident Clearance (min.)	26.99	30.04	39.55	81.29	68.71	75.88	234.53	97.11	145.27			
# of Events w/ RR/SIRV	10	8	154	8	6	75	1	3	22	231	227	3,448
RR/SIRV Responses	10	8	154	8	6	75	1	3	22	231	227	3,448
RR/SIRV Activities	12	11	200	10	9	130	2	4	38	256	241	3,733

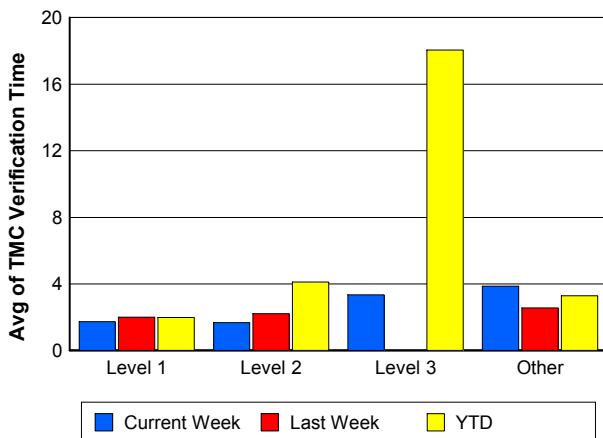
Number of Events / Severity



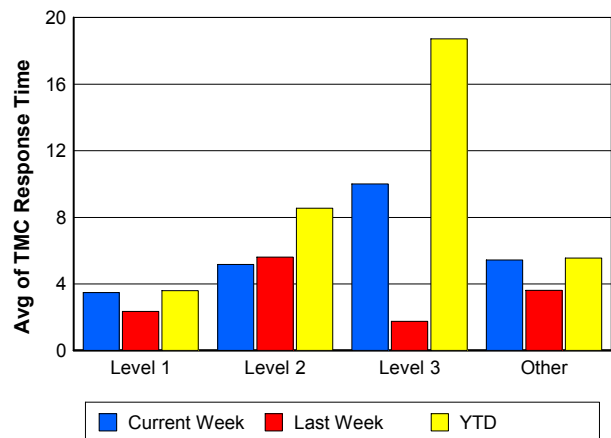
TMC Detection Time



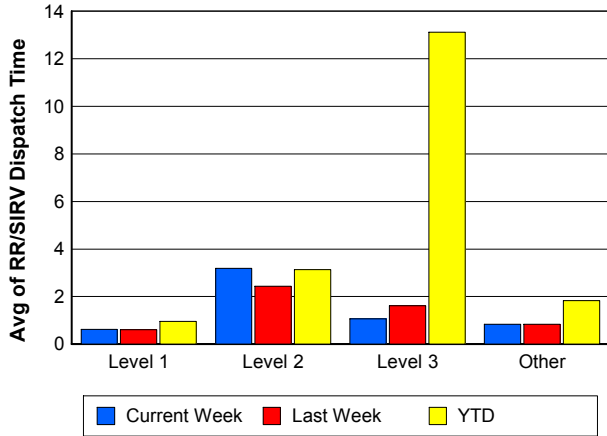
TMC Verification Time



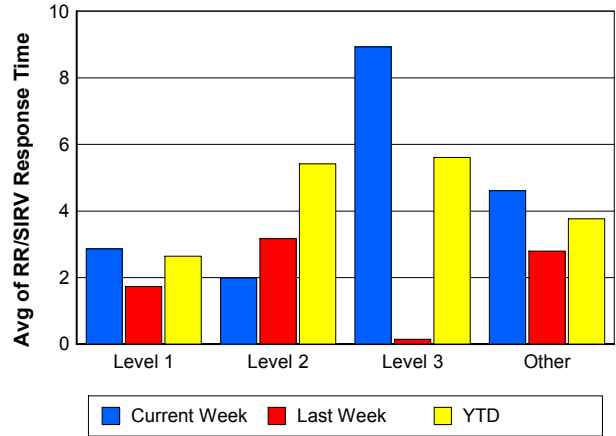
TMC Response Time



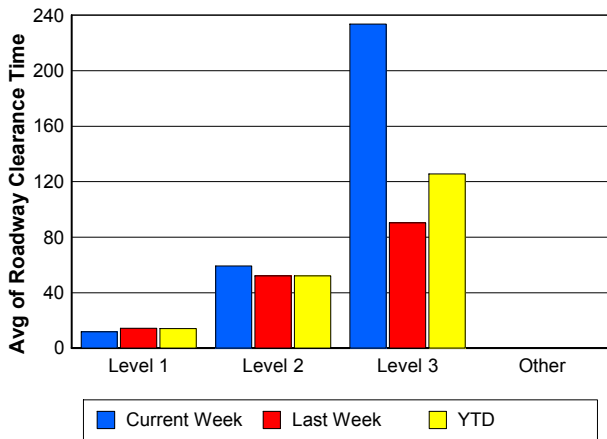
Road Ranger / SIRV Dispatch Time



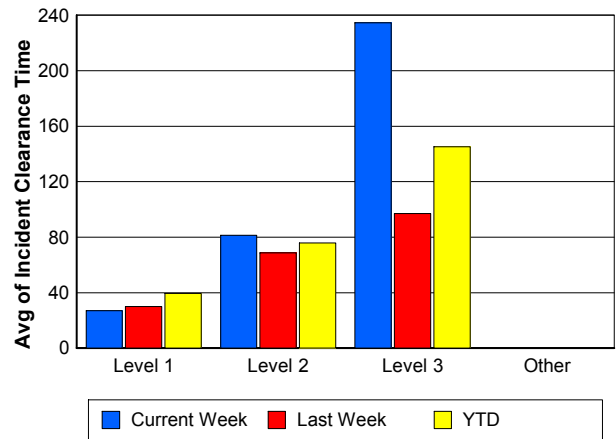
Road Ranger / SIRV Response Time



Roadway Clearance Time (2A)



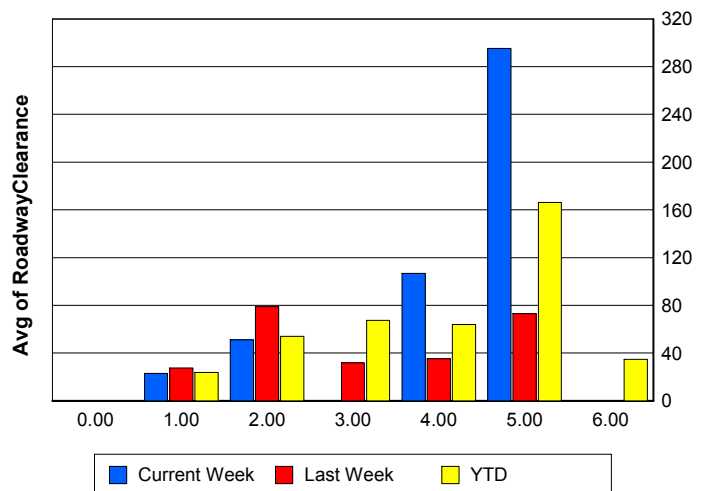
Incident Clearance Time (3B)



Roadway Clearance by Maximum Number of Lanes Blocked

	Current Week	Last Week	YTD
0			
1	23.01	27.63	23.88
2	51.10	78.84	53.92
3	0.00	31.92	67.43
4	106.80	35.41	63.88
5	295.32	72.92	166.23
6	0.00	0.00	34.87

Roadway Clearance Time (2A)



Performance Measures by Roadway

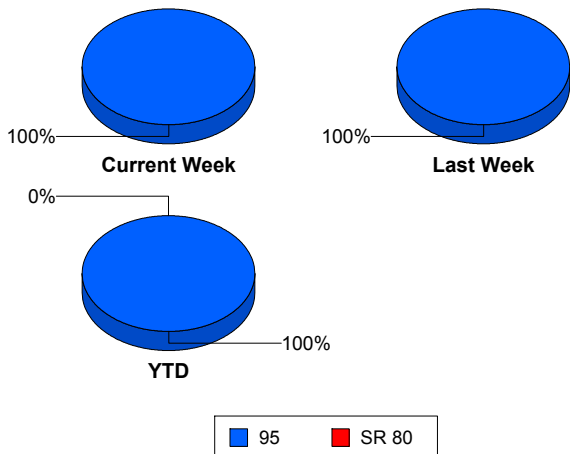
95

	<u>Current Week</u>	<u>Last Week</u>	<u>YTD</u>
Number of Events	302	297	4,651
Number of Incidents	31	23	310
TMC Detection (min.)	0.00	0.00	0.08
TMC Verification (min.)	3.65	2.51	3.35
TMC Response (min.)	5.37	3.60	5.62
RR Dispatch Time (min.)	0.90	0.88	1.89
RR Resp. Time (min.)	4.47	2.73	3.77
Event Clearance (min.)	26.52	20.03	23.63
Roadway Clear. (min.)	53.23	42.30	38.24
Incident Clearance (min.)	69.84	57.28	62.62
# of Events w/ RR/SIRV	250	244	3,699
RR/SIRV Responses	250	244	3,699
RR/SIRV Activities	280	265	4,101

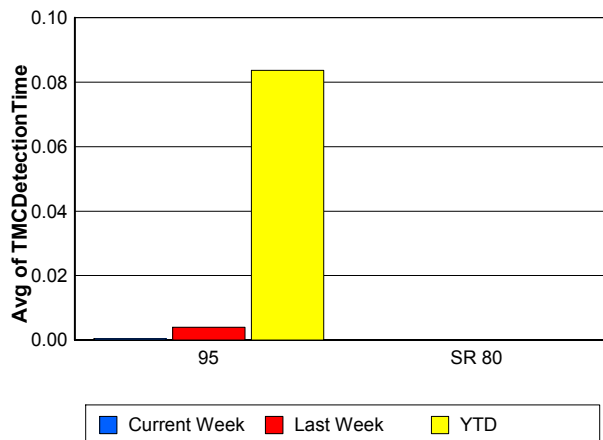
SR 80

	<u>YTD</u>
Number of Events	2
Number of Incidents	1
TMC Detection (min.)	0.00
TMC Verification (min.)	
TMC Response (min.)	
RR Dispatch Time (min.)	
RR Resp. Time (min.)	
Event Clearance (min.)	71.17
Roadway Clear. (min.)	34.23
Incident Clearance (min.)	43.68
# of Events w/ RR/SIRV	0
RR/SIRV Responses	0
RR/SIRV Activities	0

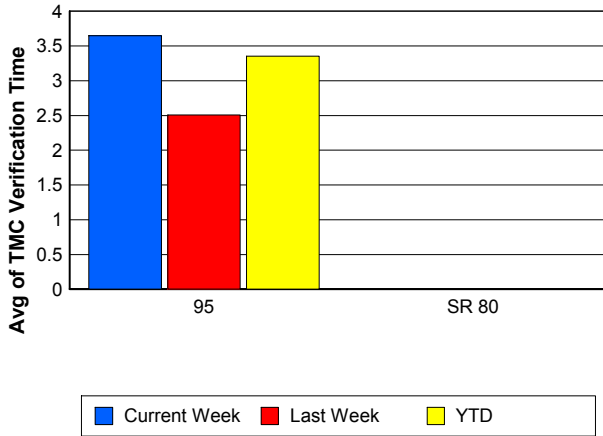
Number of Events / Roadway



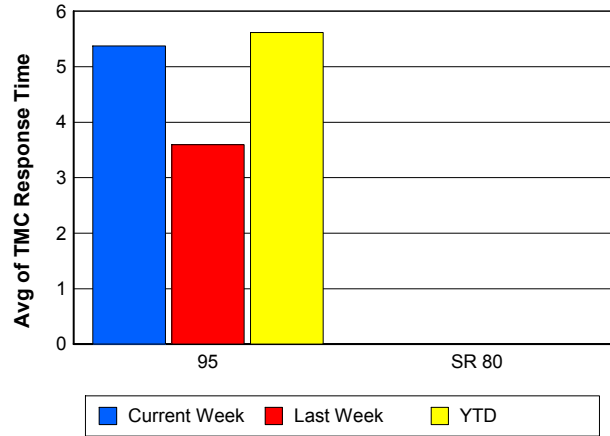
TMC Detection Time



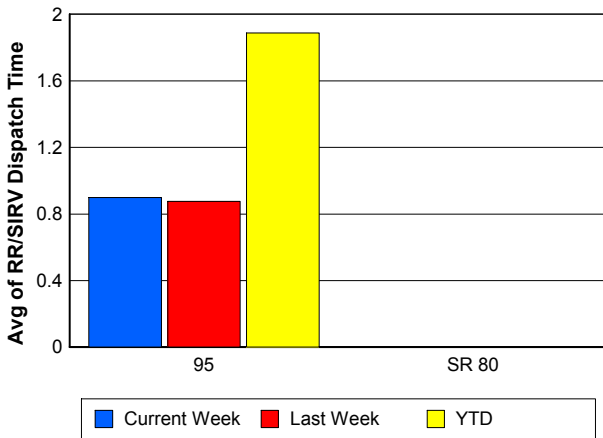
TMC Verification Time



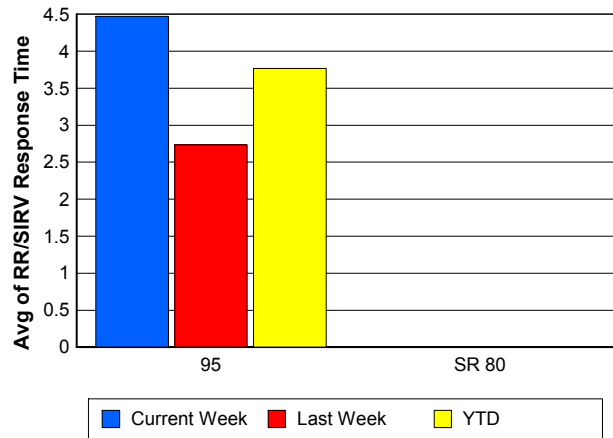
TMC Response Time



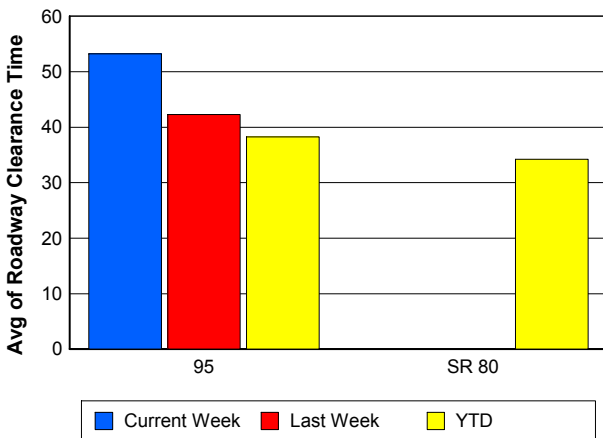
Road Ranger / SIRV Dispatch Time



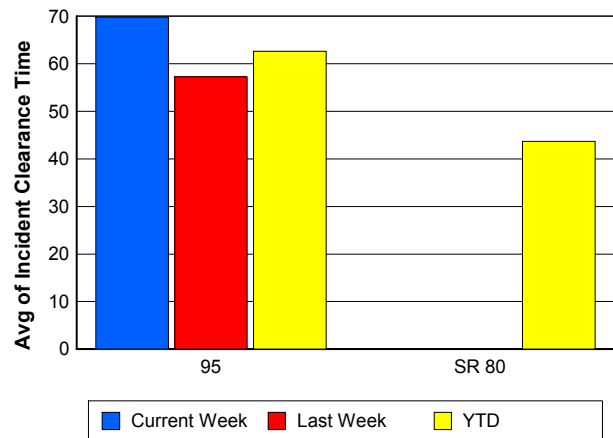
Road Ranger / SIRV Response Time



Roadway Clearance Time (2A)



Incident Clearance Time (3B)



Performance Measures by Event Type

Accident

	<u>Current Week</u>	<u>Last Week</u>	<u>YTD</u>
Number of Events	37	32	413
Number of Incidents	17	17	191
TMC Detection (min.)	0.00	0.04	0.01
TMC Verification (min.)	4.12	2.17	3.86
TMC Response (min.)	9.76	5.12	7.22
RR Dispatch Time (min.)	2.58	1.17	2.35
RR Response Time (min.)	7.18	3.95	4.88
Event Clearance (min.)	71.94	58.09	57.34
Roadway Clearance (min.)	70.87	50.29	42.91
Incident Clearance (min.)	93.94	68.63	72.12
# of Events w/ RR/SIRV	26	22	336
RR/SIRV Assists	26	22	336
RR/SIRV Activities	29	29	438

Debris on Roadway

	<u>Current Week</u>	<u>Last Week</u>	<u>YTD</u>
Number of Events	20	24	323
Number of Incidents	1	1	16
TMC Detection (min.)	0.00	0.00	0.00
TMC Verification (min.)	17.27	4.62	8.74
TMC Response (min.)	17.26	5.99	9.24
RR Dispatch Time (min.)	2.04	0.90	1.80
RR Response Time (min.)	15.23	5.09	7.45
Event Clearance (min.)	22.02	10.04	12.99
Roadway Clearance (min.)	19.87	7.90	14.27
Incident Clearance (min.)	24.97	11.17	16.01
# of Events w/ RR/SIRV	20	24	321
RR/SIRV Assists	20	24	321
RR/SIRV Activities	24	24	339

Disabled Vehicle

	<u>Current Week</u>	<u>Last Week</u>	<u>YTD</u>
Number of Events	216	214	3,215
Number of Incidents	10	5	74
TMC Detection (min.)	0.00	0.00	0.00
TMC Verification (min.)	2.40	2.64	3.21
TMC Response (min.)	2.99	3.15	4.52
RR Dispatch Time (min.)	0.54	0.84	1.45
RR Response Time (min.)	2.44	2.32	3.13
Event Clearance (min.)	15.56	15.58	18.03
Roadway Clearance (min.)	23.85	22.02	21.63
Incident Clearance (min.)	32.06	27.92	32.96
# of Events w/ RR/SIRV	199	196	2,914
RR/SIRV Assists	199	196	2,914
RR/SIRV Activities	222	211	3,204

Emergency Vehicles

	<u>YTD</u>
Number of Events	6
Number of Incidents	3
TMC Detection (min.)	0.00
TMC Verification (min.)	0.00
TMC Response (min.)	7.51
RR Dispatch Time (min.)	5.34
RR Response Time (min.)	2.17
Event Clearance (min.)	31.68
Roadway Clearance (min.)	34.97
Incident Clearance (min.)	40.08
# of Events w/ RR/SIRV	3
RR/SIRV Assists	3
RR/SIRV Activities	4

Other

	<u>Current Week</u>	<u>Last Week</u>	<u>YTD</u>
Number of Events	13	15	431
Number of Incidents	0	0	6
TMC Detection (min.)	0.00	0.00	0.00
TMC Verification (min.)	6.78	0.00	0.91
TMC Response (min.)	29.92	0.00	25.90
RR Dispatch Time (min.)	1.73	0.95	14.36
RR Response Time (min.)	28.19	0.00	8.28
Event Clearance (min.)	80.67	15.85	39.90
Roadway Clearance (min.)			38.11
Incident Clearance (min.)			52.15
# of Events w/ RR/SIRV	5	2	85
RR/SIRV Assists	5	2	85
RR/SIRV Activities	5	1	71

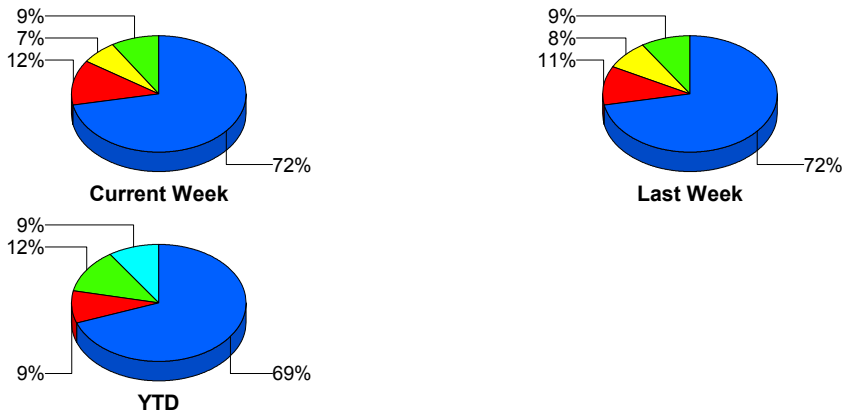
Police Activity

	<u>Current Week</u>	<u>Last Week</u>	<u>YTD</u>
Number of Events	14	11	231
Number of Incidents	3	0	16
TMC Detection (min.)	0.00	0.00	1.67
TMC Verification (min.)	0.00	0.00	1.81
TMC Response (min.)			11.60
RR Dispatch Time (min.)			8.76
RR Response Time (min.)			2.84
Event Clearance (min.)	34.19	20.83	25.41
Roadway Clearance (min.)	62.38		82.88
Incident Clearance (min.)	74.21		131.64
# of Events w/ RR/SIRV	0	0	16
RR/SIRV Assists	0	0	16
RR/SIRV Activities	0	0	18

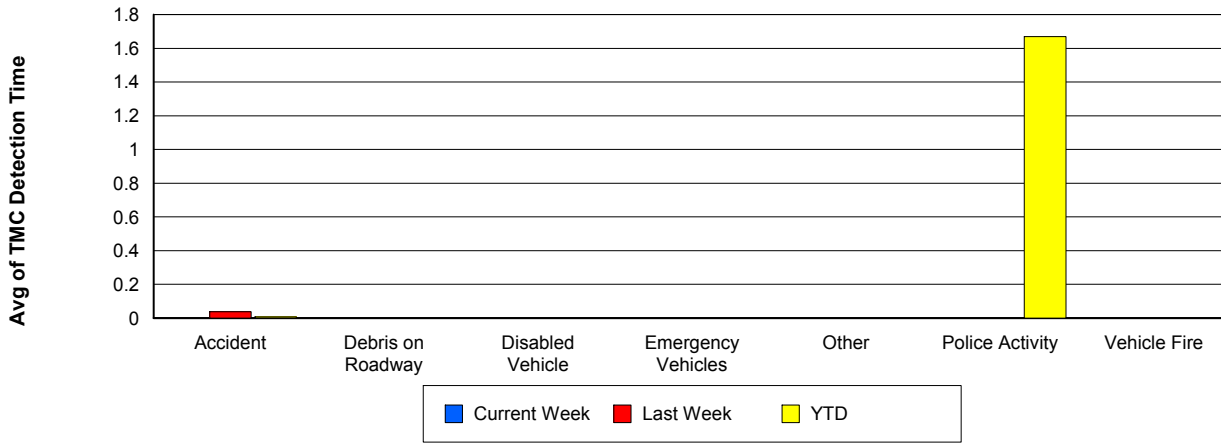
Vehicle Fire

	<u>Last Week</u>	<u>YTD</u>
Number of Events	1	8
Number of Incidents	0	5
TMC Detection (min.)	0.00	0.00
TMC Verification (min.)	0.00	3.25
TMC Response (min.)		7.49
RR Dispatch Time (min.)		1.24
RR Response Time (min.)		6.25
Event Clearance (min.)	47.90	66.51
Roadway Clearance (min.)		40.97
Incident Clearance (min.)		89.54
# of Events w/ RR/SIRV	0	5
RR/SIRV Assists	0	5
RR/SIRV Activities	0	7

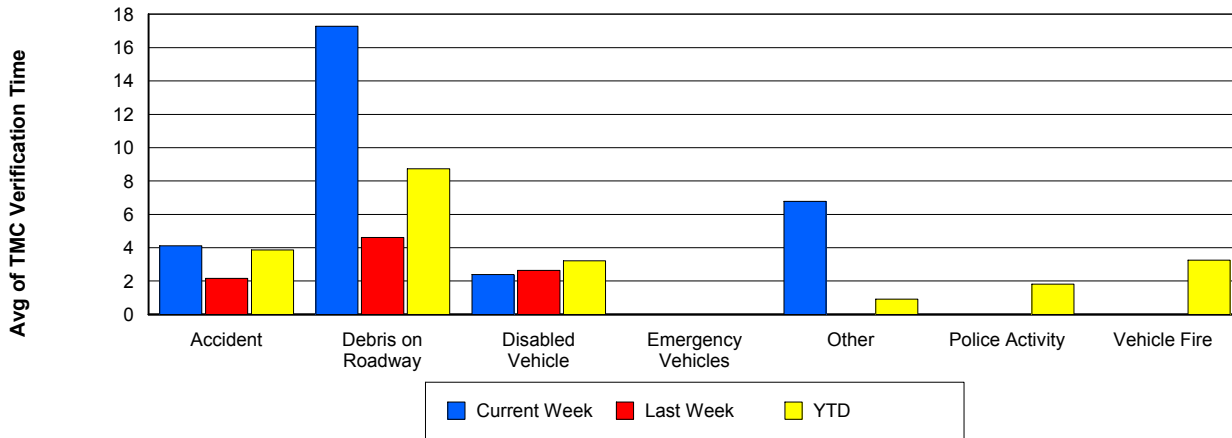
Number of Events / Event Type



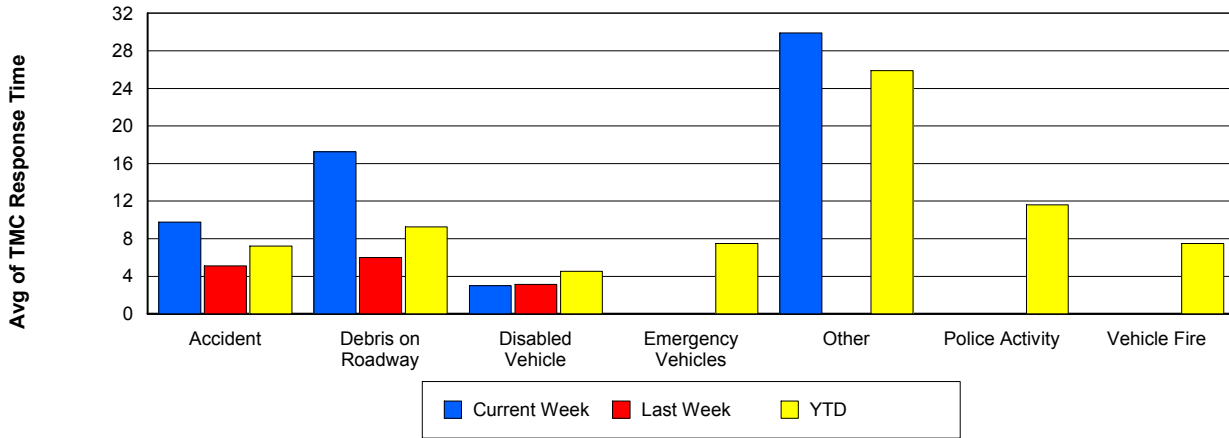
TMC Detection Time



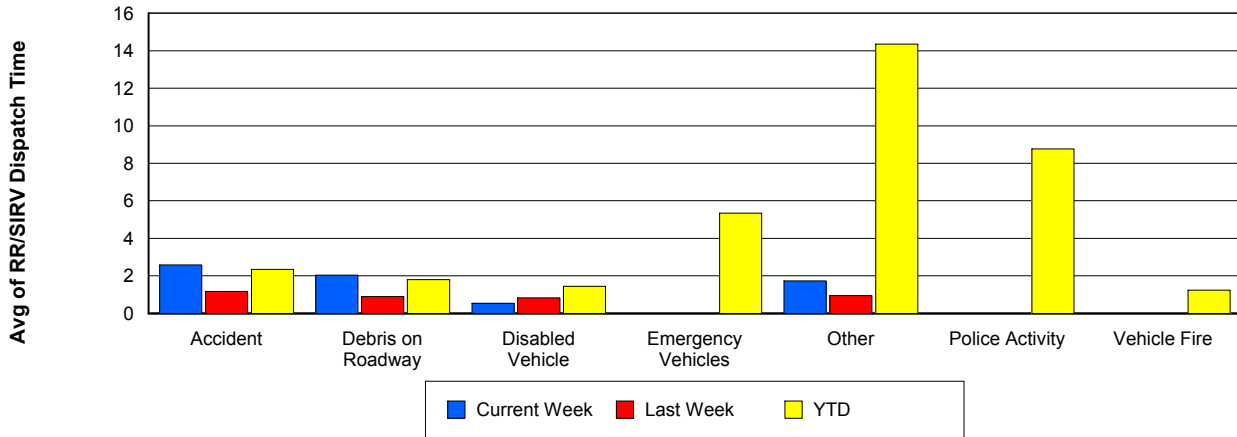
TMC Verification Time



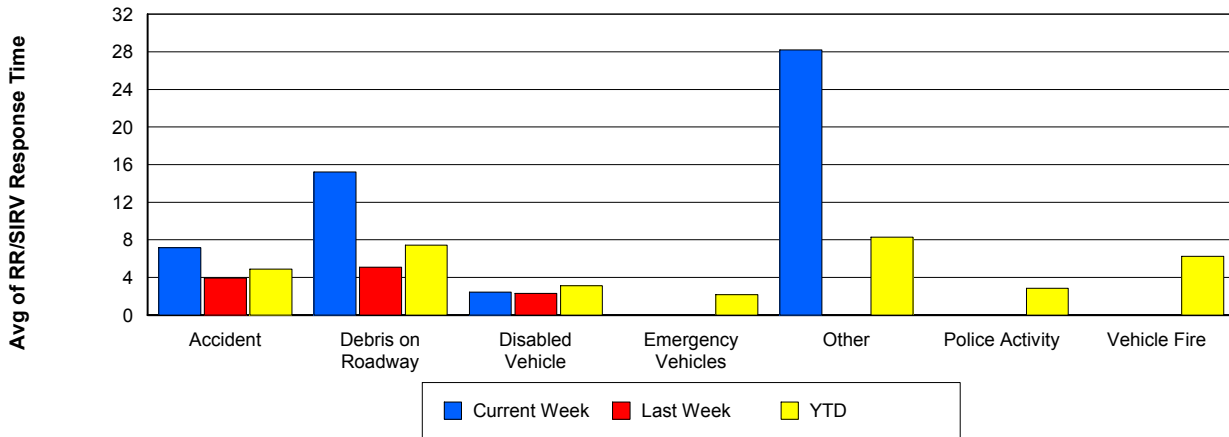
TMC Response Time



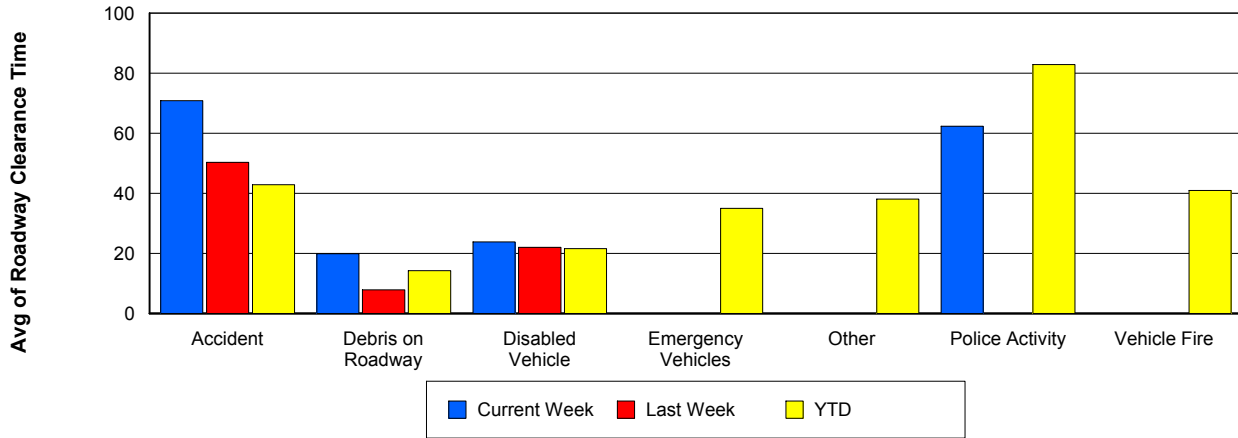
Road Ranger / SIRV Dispatch Time



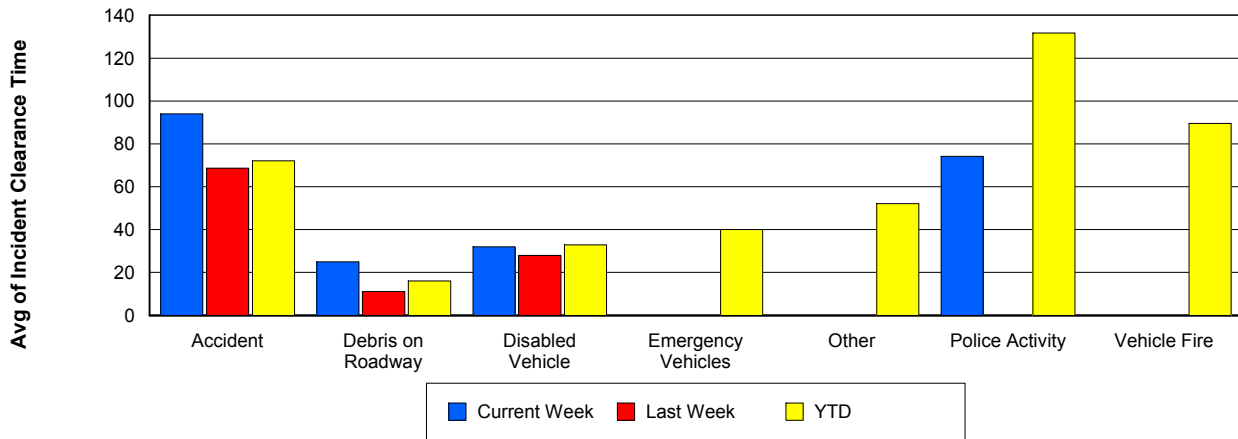
Road Ranger / SIRV Response Time



Roadway Clearance Time (2A)



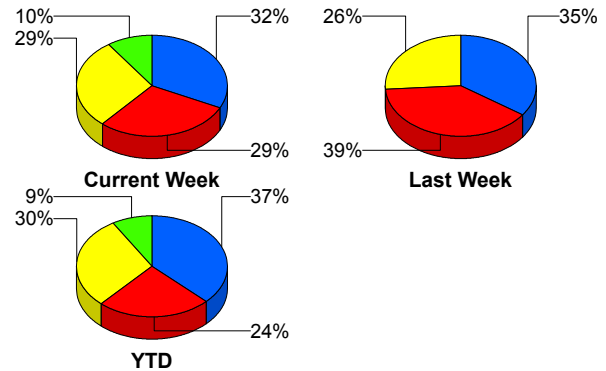
Incident Clearance Time (3B)



Incident Detection Methods

	Current Week	Last Week	YTD
Broward CCTV	1	0	5
Broward Road Ranger	0	0	2
District 4	1	0	5
FHP	9	9	76
I-95 Construction PIO	0	0	2
ITMS	0	0	3
ITMS CCTV	9	6	92
Local Police	0	0	1
Motorist	0	0	6
Palm Beach Road Ran	10	8	116
Road Watcher	0	0	1
SmarTraveler (511)	1	0	2
Total	31	23	311

Total Incidents by Detection Method

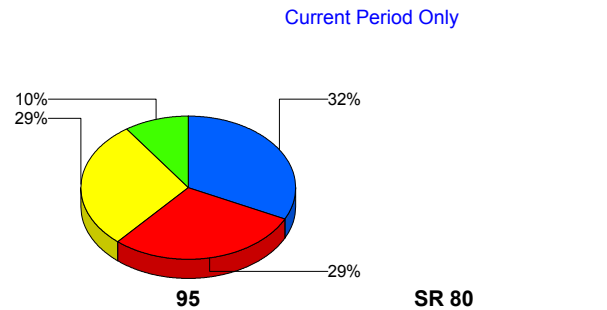


■ Palm Beach Road Ranger
 ■ FHP
 ■ ITMS CCTV
 ■ Others

Incident Detection Methods by Roadway

		Current Week	Last Week	YTD
95	Broward CCTV	1	0	5
	Broward Road Ranger	0	0	2
	District 4	1	0	5
	FHP	9	9	75
	I-95 Construction PIO	0	0	2
	ITMS	0	0	3
	ITMS CCTV	9	6	92
	Local Police	0	0	1
	Motorist	0	0	6
	Palm Beach Road Ran	10	8	116
	Road Watcher	0	0	1
	SmarTraveler (511)	1	0	2
	Total	31	23	310
SR 80	FHP	0	0	1

Total Events by Roadway and Detection Method



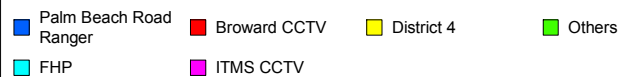
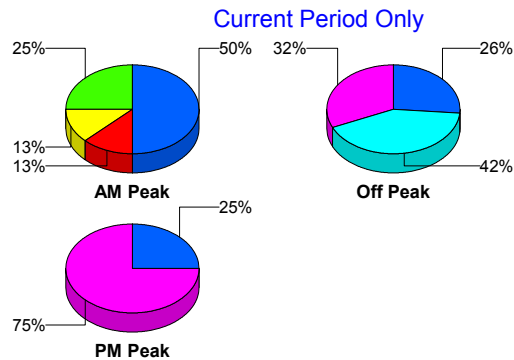
■ Palm Beach Road Ranger
 ■ FHP
 ■ ITMS CCTV
 ■ Others
 ■ Broward TMC

		Current Week	Last Week	YTD
SR 80	Total	0	0	1
Total		31	23	311

Incident Detection Methods by Peak Period

		Current Week	Last Week	YTD
AM Peak	Broward CCTV	1	0	1
	Broward Road Ranger	0	0	1
	District 4	1	0	3
	FHP	1	4	27
	ITMS	0	0	2
	ITMS CCTV	0	0	11
	Motorist	0	0	2
	Palm Beach Road Ran	4	3	36
	Road Watcher	0	0	1
	SmarTraveler (511)	1	0	2
	Total	8	7	86
Off Peak	Broward CCTV	0	0	4
	Broward Road Ranger	0	0	1
	District 4	0	0	2
	FHP	8	4	30
	I-95 Construction PIO	0	0	2
	ITMS	0	0	1
	ITMS CCTV	6	2	49
	Motorist	0	0	1
	Palm Beach Road Ran	5	3	47
	Total	19	9	137
PM Peak	FHP	0	1	19
	ITMS CCTV	3	4	32
	Local Police	0	0	1
	Motorist	0	0	3
	Palm Beach Road Ran	1	2	33
	Total	4	7	88

Total Events by Peak Period and Detection Method

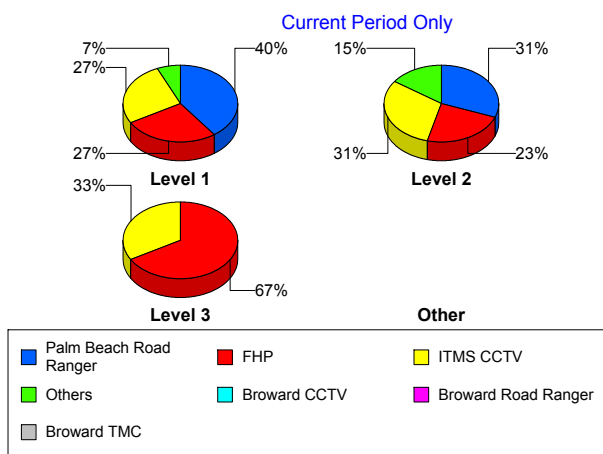


	Current Week	Last Week	YTD
Total	31	23	311

Incident Detection Methods by Severity

		Current Week	Last Week	YTD
Level 1	Broward CCTV	1	0	3
	Broward Road Ranger	0	0	1
	District 4	0	0	4
	FHP	4	4	34
	I-95 Construction PIO	0	0	1
	ITMS	0	0	1
	ITMS CCTV	4	1	38
	Local Police	0	0	1
	Motorist	0	0	4
	Palm Beach Road Ran	6	4	88
	Road Watcher	0	0	1
	SmarTraveler (511)	0	0	1
	Total	15	9	177
	Level 2	Broward Road Ranger	0	0
District 4		1	0	1
FHP		3	5	33
I-95 Construction PIO		0	0	1
ITMS		0	0	2
ITMS CCTV		4	3	38
Motorist		0	0	1
Palm Beach Road Ran		4	3	23
SmarTraveler (511)		1	0	1
Total		13	11	101
Level 3	Broward CCTV	0	0	2
	FHP	2	0	9
	ITMS CCTV	1	2	16
	Motorist	0	0	1
	Palm Beach Road Ran	0	1	5

Total Events by Severity and Detection Method



		Current Week	Last Week	YTD
Level 3	Total	3	3	33
Total		31	23	311

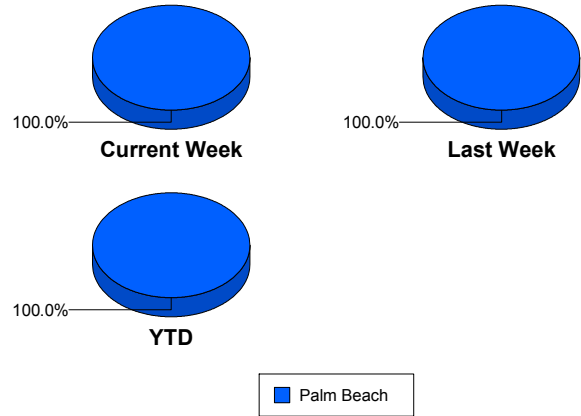
Road Ranger / SIRV Performance Measures

Road Ranger / SIRV Performance By County

Values presented are:
 - Total Events with a RR/SIRV Response
 - Total RR/SIRV Responses,
 - Total Activities Performed

	Current We	Last Week	YTD
Palm Beach	331	322	4,839
	342	332	5,002
	362	353	5,344

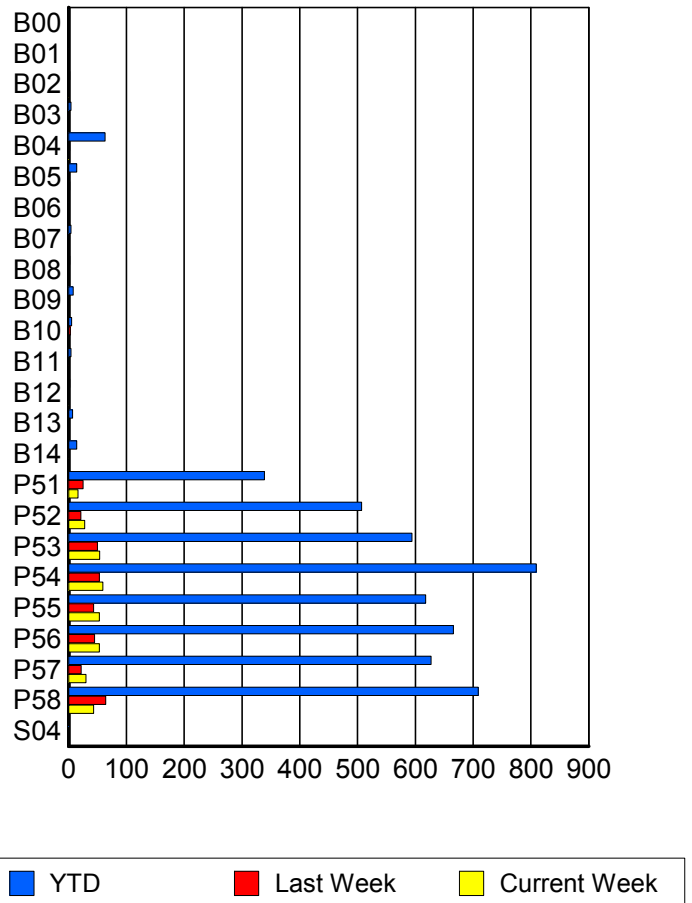
RR/SIRV Responses per County



Road Ranger / SIRV Performance By Truck

	Current We	Last Week	YTD
B00	0	0	1
	0	0	1
	0	0	1
B01	0	1	1
	0	1	1
	0	1	1
B02	1	0	2
	1	0	2
	1	0	2
B03	0	0	4
	0	0	4
	0	0	4
B04	1	2	62
	1	2	63
	1	3	71
B05	2	1	13
	2	1	14
	3	1	15
B06	0	0	1
	0	0	1
	0	0	1
B07	0	0	4
	0	0	4
	0	0	4
B08	0	0	2
	0	0	2
	0	0	2

RR/SIRV Responses per Truck



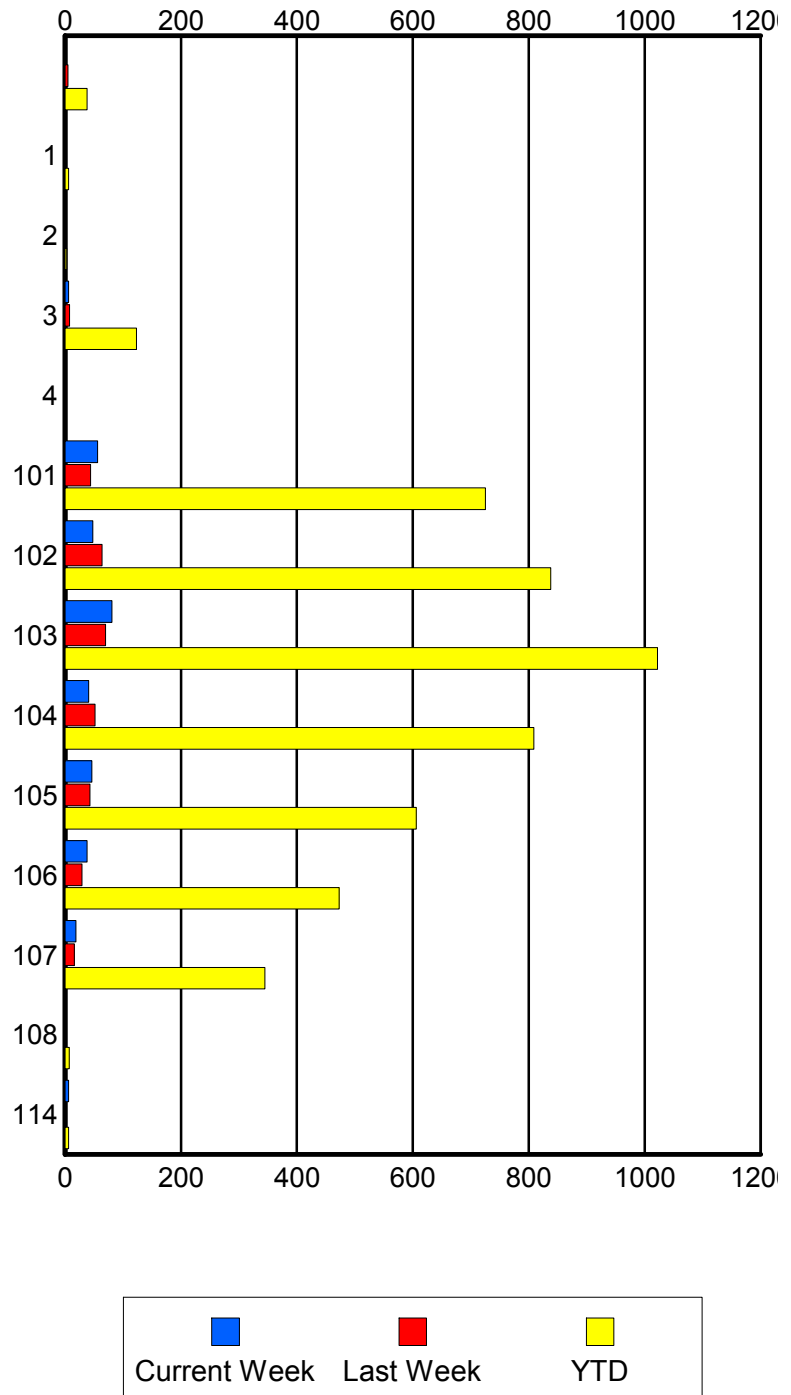
	Current We	Last Week	YTD
B09	0 0 0	0 0 0	8 8 8
B10	0 0 0	3 3 3	5 5 5
B11	0 0 0	1 1 1	4 4 4
B12	1 1 1	0 0 0	2 2 2
B13	0 0 0	0 0 0	7 7 7
B14	1 1 1	1 1 1	14 14 15
P51	16 16 17	25 25 28	337 339 357
P52	28 28 29	21 21 22	503 507 541
P53	53 54 56	49 50 52	586 594 637
P54	59 59 62	51 53 57	802 809 860
P55	51 53 53	42 43 45	611 618 660
P56	52 53 55	45 45 47	656 666 725
P57	30 30 35	22 22 25	625 627 679
P58	43 43 48	63 64 67	702 709 742
S04	0 0 0	0 0 0	1 1 1

Road Ranger / SIRV Performance By Beat

	Current We	Last Week	YTD
	1	5	38
	1	5	38
	1	5	38
1	0	0	6
	0	0	6
	0	0	7
2	0	0	3
	0	0	3
	0	0	4
3	6	8	121
	6	8	123
	7	9	131
4	0	1	1
	0	1	1
	0	1	1
101	54	43	716
	56	44	725
	59	44	787
102	48	63	831
	48	64	838
	53	67	885
103	79	69	1,010
	81	70	1,022
	86	77	1,100
104	41	52	802
	41	52	809
	42	56	870
105	46	41	601
	46	43	606
	47	47	643
106	38	29	466
	38	29	473
	41	30	505
107	19	16	343
	19	16	345
	20	17	360
108	0	0	6
	0	0	7
	0	0	7
114	6	0	6
	6	0	6
	6	0	6

Values presented are:
 - Total Events with a RR/SIRV Response
 - Total RR/SIRV Responses,
 - Total Activities Performed

RR/SIRV Responses per Beat

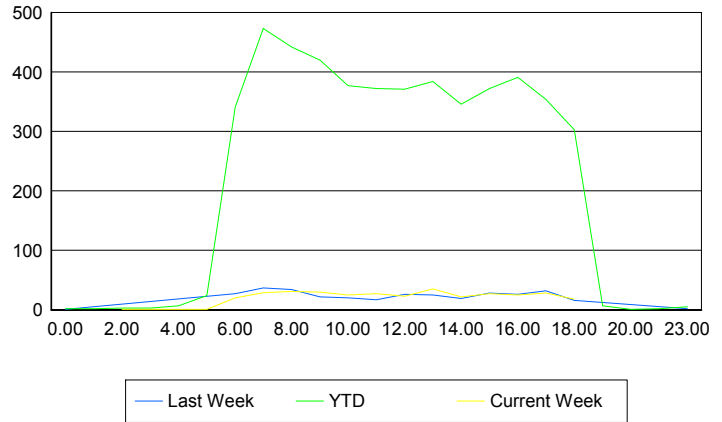


Road Ranger / SIRV Performance By Time of Day

Values presented are:
 - Total Events with a RR/SIRV Response
 - Total RR/SIRV Responses,
 - Total Activities Performed

	Current We	Last Week	YTD
12AM-1AM	0 0 0	1 1 1	2 2 2
1AM-2AM	0 0 0	0 0 0	2 2 2
2AM-3AM	1 1 1	0 0 0	3 3 3
3AM-4AM	0 0 0	0 0 0	3 3 3
4AM-5AM	0 0 0	0 0 0	4 7 8
5AM-6AM	1 1 1	0 0 0	22 24 24
6AM-7AM	20 20 20	26 27 29	329 341 361
7AM-8AM	29 29 29	36 37 39	453 473 504
8AM-9AM	31 31 32	33 34 35	425 442 474
9AM-10AM	28 30 33	21 22 25	407 420 467
10AM-11AM	25 25 25	18 20 21	365 377 402
11AM-12PM	26 27 31	17 17 19	359 372 407
12PM-1PM	21 23 24	25 26 29	360 371 398

Number of Responses / Hour of the Day



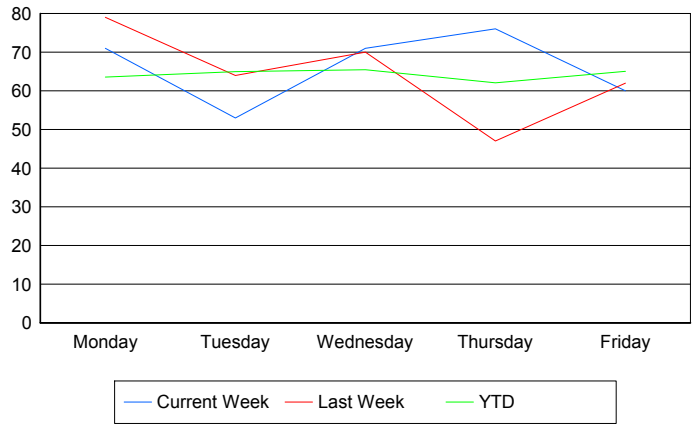
	Current We	Last Week	YTD
1PM-2PM	31	23	372
	35	25	384
	37	25	412
2PM-3PM	21	19	334
	22	19	346
	23	21	364
3PM-4PM	27	28	361
	27	28	372
	31	29	393
4PM-5PM	25	26	379
	25	26	391
	27	27	411
5PM-6PM	28	32	346
	28	32	354
	29	34	376
6PM-7PM	17	16	299
	18	16	303
	19	17	317
7PM-8PM	0	0	7
	0	0	7
	0	0	8
8PM-9PM	0	0	1
	0	0	1
	0	0	1
10PM-11PM	0	0	2
	0	0	2
	0	0	2
11PM-12AM	0	1	4
	0	2	5
	0	2	5

Road Ranger / SIRV Performance By Day of Week

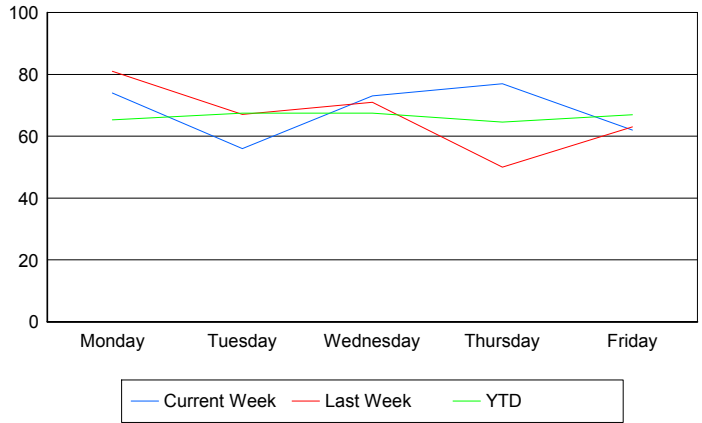
Values presented are: - Total Events with a RR/SIRV Response - Total RR/SIRV Responses, - Total Activities Performed

	Current We	Last Week	YTD
Monday	71	79	934
	74	81	959
	77	84	1,013
Tuesday	53	64	954
	56	67	989
	57	69	1,052
Wednesday	71	70	968
	73	71	998
	82	76	1,072
Thursday	76	47	969
	77	50	1,009
	80	55	1,083
Friday	60	62	1,016
	62	63	1,047
	66	69	1,124

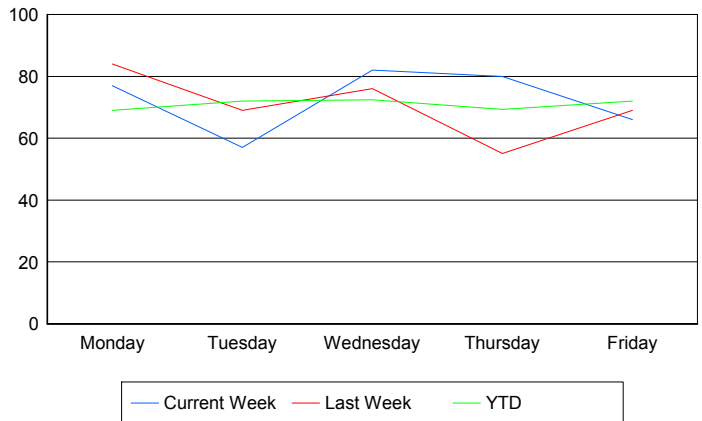
Avg # of events with a RR/SIRV Response per Day of the Week



Avg # of RR/SIRV Responses per Day of the Week



Avg # of RR/SIRV Activities Performed per Day of the Week



Road Ranger / SIRV Responses per Time of Day and Day of Week

