



Weekly Performance Measures Report Palm Beach County



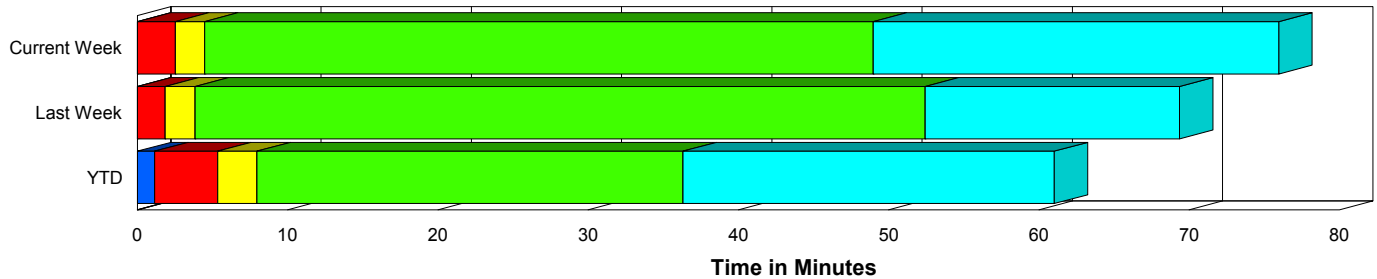
Created on:
April 27, 2009
9:05 am

Period From Apr 19, 2009 to Apr 25, 2009

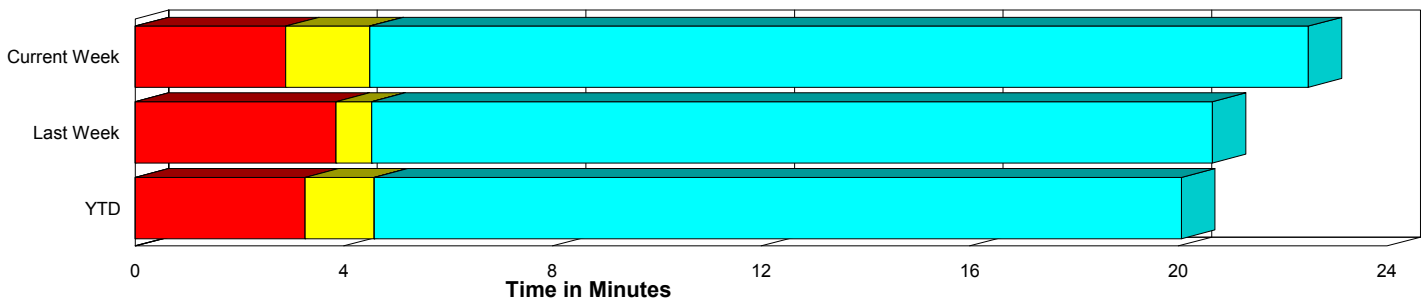
Performance Measures Summary

	Traffic Events (No Lanes Blocked)			Incidents (Lanes Blocked)		
	<u>This Week</u>	<u>Last Week</u>	<u>YTD</u>	<u>This Week</u>	<u>Last Week</u>	<u>YTD</u>
Number of Events	290	271	4,632	26	31	337
TMC Detection (min.)	0.00	0.00	0.00	0.00	0.00	1.15
TMC Verification (min.)	2.88	3.85	3.26	2.54	1.86	4.19
TMC Response (min.)	5.00	5.44	5.52	5.08	4.54	6.31
RR Dispatch Time (min.)	2.04	0.83	1.85	1.06	1.72	2.55
RR Response Time (min.)	2.97	4.61	3.72	4.02	2.81	3.76
Roadway Clearance (min.)				46.86	53.23	38.90
Event Clearance (min.)	22.99	21.56	20.99	73.38	69.84	63.40
# of Events w/ RR/SIRV	250	231	3,698	21	19	272
RR/SIRV Responses	250	231	3,698	21	19	272
RR/SIRV Activities	276	256	4,009	40	24	408

Incident Clearance Time-Line



Traffic Event (Non-Lane Blockage) Time-Line



■ Avg. TMC Detection Time	■ Avg. Time from TMC Response to Roadway Clearance*
■ Avg. Time from TMC Detection to TMC Verification	■ Avg. Time from Roadway Clearance to Incident/Event Clearance**
■ Avg. Time from TMC Verification to TMC Response	

* Roadway clearance equals all travel lanes open

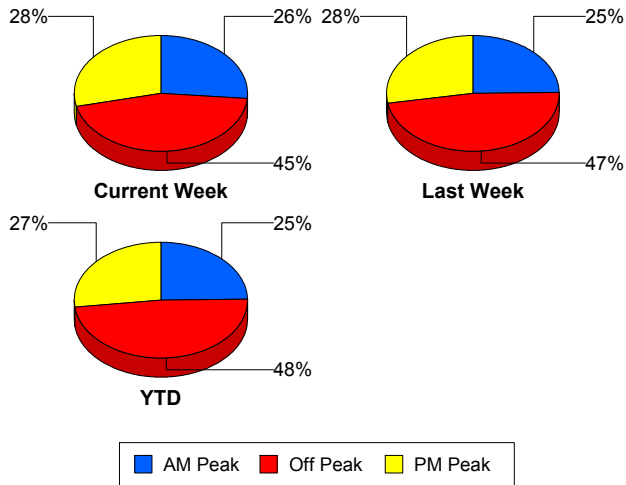
** Incident clearance equals time when last responder has left the scene

Performance Measures by Peak Period

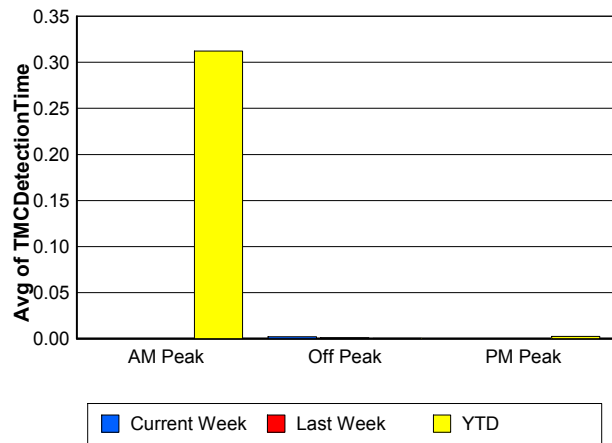
Note: AM peak period is defined as 6am to 10am and PM peak period is defined as 3pm to 7pm.

	AM Peak			Off Peak			PM Peak		
	<u>Current Week</u>	<u>Last Week</u>	<u>YTD</u>	<u>Current Week</u>	<u>Last Week</u>	<u>YTD</u>	<u>Current Week</u>	<u>Last Week</u>	<u>YTD</u>
Number of Events	83	75	1,234	143	143	2,400	90	84	1,335
Number of Incidents	13	8	99	6	19	143	7	4	95
TMC Detection (min.)	0.00	0.00	0.31	0.00	0.00	0.00	0.00	0.00	0.00
TMC Verification (min.)	2.37	3.67	3.23	2.36	3.19	2.73	4.08	4.41	4.48
TMC Response (min.)	3.27	5.27	4.19	5.80	5.55	6.66	5.63	5.24	5.52
RR Dispatch Time (min.)	0.71	1.14	1.05	3.47	0.60	2.92	1.24	1.06	1.40
RR Response Time (min.)	2.57	4.13	3.20	2.35	4.95	3.78	4.40	4.18	4.13
Event Clearance (min.)	30.90	23.08	21.95	30.73	34.26	27.06	17.97	16.40	19.91
Roadway Clearance (min.)	51.24	19.02	41.08	53.35	74.62	43.64	33.18	20.08	29.48
Incident Clearance (min.)	75.63	44.67	65.04	87.88	87.25	72.42	56.77	37.50	48.11
# of Events w/ RR/SIRV	80	74	1,174	107	100	1,559	84	76	1,237
RR/SIRV Responses	80	74	1,174	107	100	1,559	84	76	1,237
RR/SIRV Activities	90	80	1,341	123	115	1,729	103	85	1,347

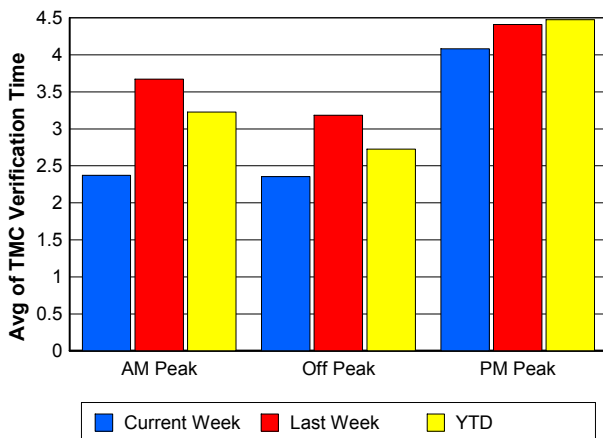
Number of Events / Peak Period



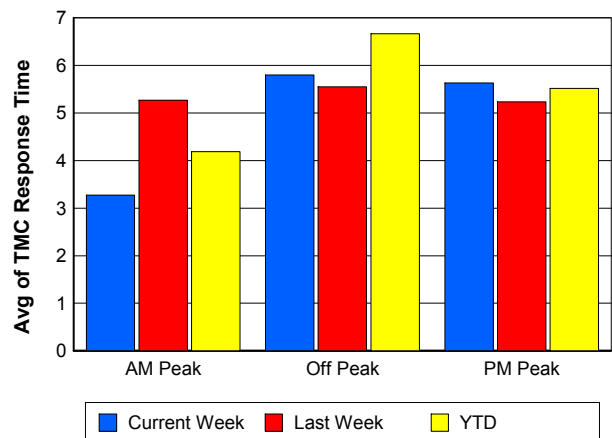
TMC Detection Time



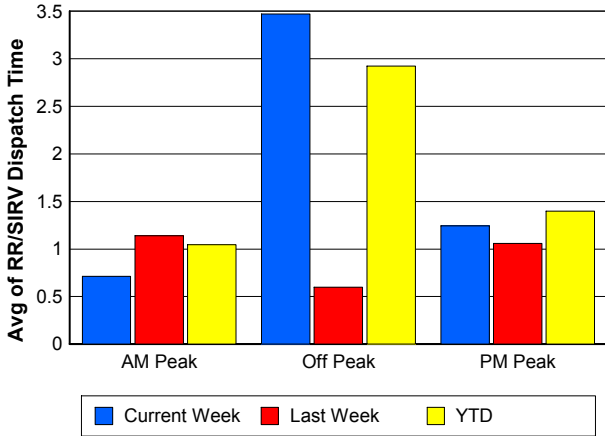
TMC Verification Time



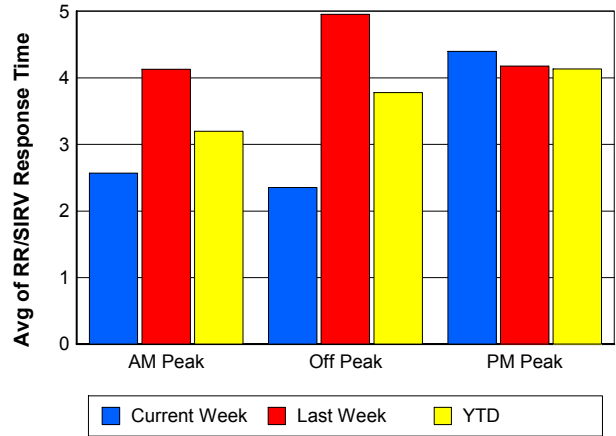
TMC Response Time



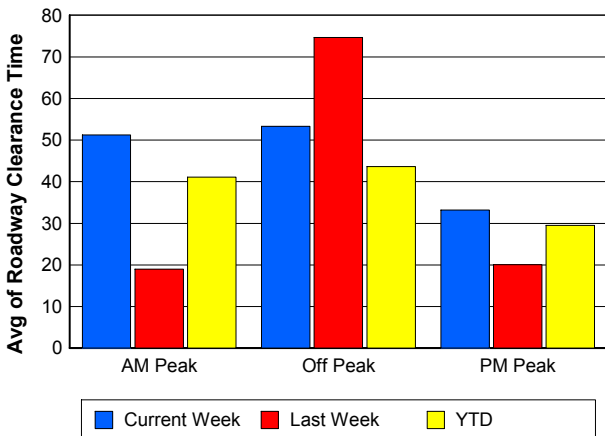
Road Ranger / SIRV Dispatch Time



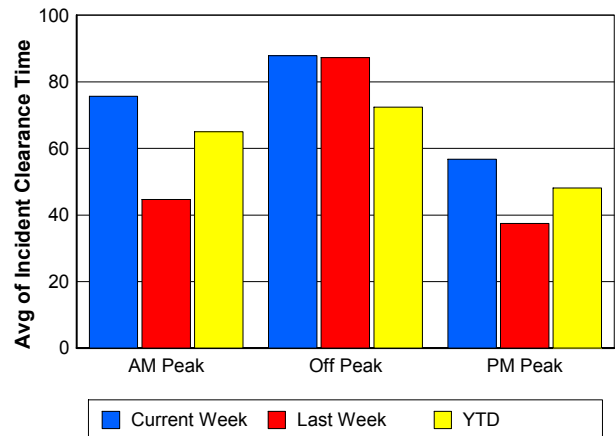
Road Ranger / SIRV Response Time



Roadway Clearance Time (2A)



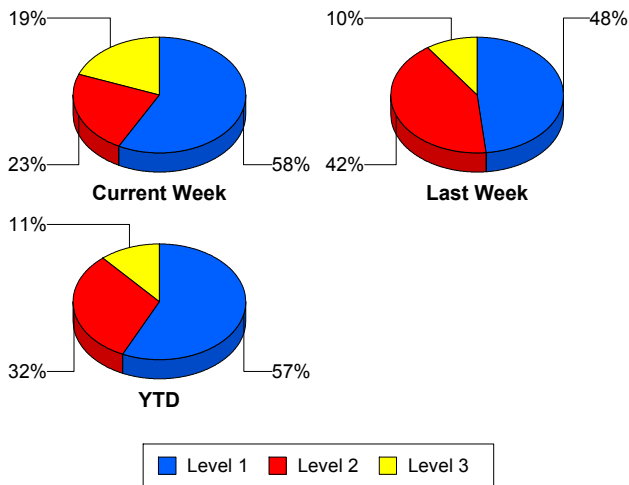
Incident Clearance Time (3B)



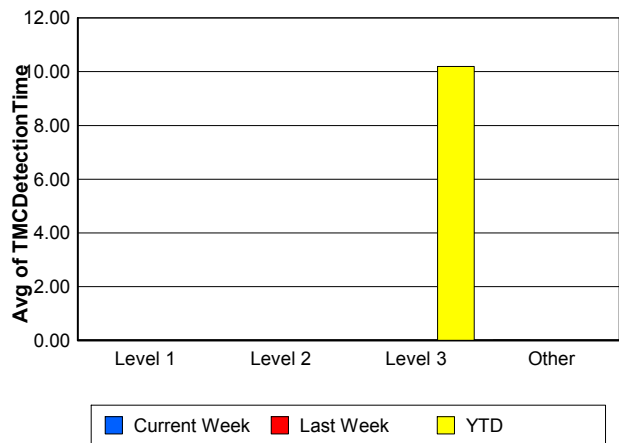
Performance Measures by Severity

	Level 1			Level 2			Level 3			Other		
	<u>This Week</u>	<u>Last Week</u>	<u>YTD</u>	<u>This Week</u>	<u>Last Week</u>	<u>YTD</u>	<u>This Week</u>	<u>Last Week</u>	<u>YTD</u>	<u>This Week</u>	<u>Last Week</u>	<u>YTD</u>
Number of Events	15	15	192	6	13	107	5	3	38	290	271	4,632
Number of Incidents	15	15	192	6	13	107	5	3	38	0	0	0
TMC Detection (min.)	0.00	0.00	0.00	0.00	0.00	0.00	0.00	0.00	10.19	0.00	0.00	0.00
TMC Verification (min.)	1.63	1.73	1.95	6.33	1.68	4.24	0.73	3.34	15.70	2.88	3.85	3.26
TMC Response (min.)	4.05	3.48	3.63	8.38	5.17	8.54	4.05	10.00	16.47	5.00	5.44	5.52
RR Dispatch Time (min.)	1.07	0.62	0.97	0.91	3.18	2.99	1.21	1.07	11.28	2.04	0.83	1.85
RR Resp. Time (min.)	2.98	2.86	2.67	7.47	1.99	5.55	2.85	8.93	5.18	2.97	4.61	3.72
Event Clearance (min.)	43.02	26.99	39.82	81.91	81.29	76.22	154.22	234.53	146.44	22.99	21.56	20.99
Roadway Clear. (min.)	14.17	11.84	14.04	55.14	59.36	52.30	135.02	233.64	126.78			
Incident Clearance (min.)	43.02	26.99	39.82	81.91	81.29	76.22	154.22	234.53	146.44			
# of Events w/ RR/SIRV	12	10	166	5	8	80	4	1	26	250	231	3,698
RR/SIRV Responses	12	10	166	5	8	80	4	1	26	250	231	3,698
RR/SIRV Activities	20	12	220	10	10	140	10	2	48	276	256	4,009

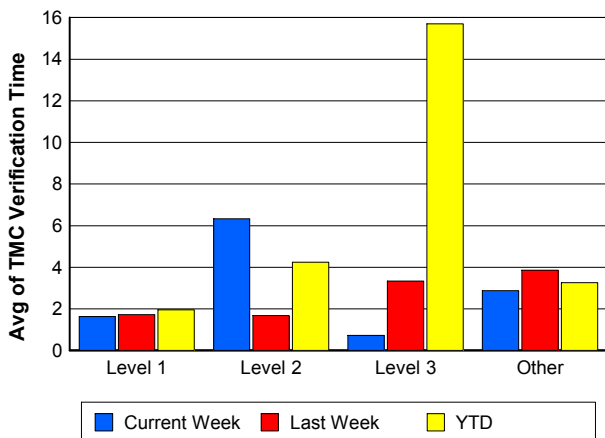
Number of Events / Severity



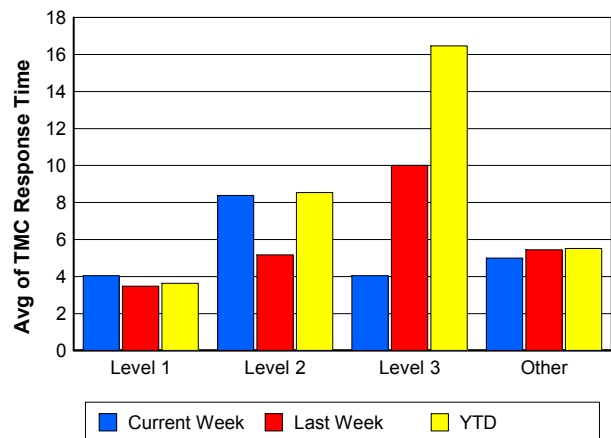
TMC Detection Time



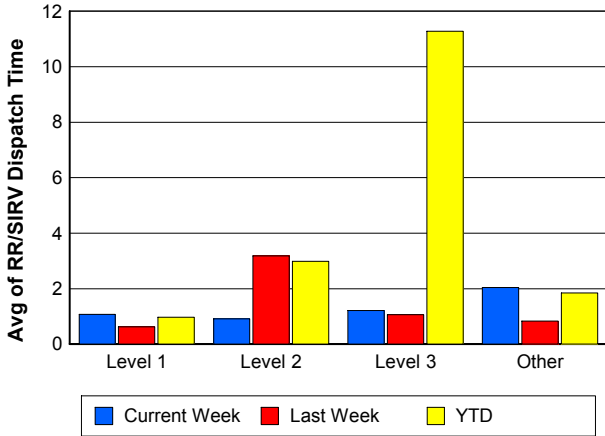
TMC Verification Time



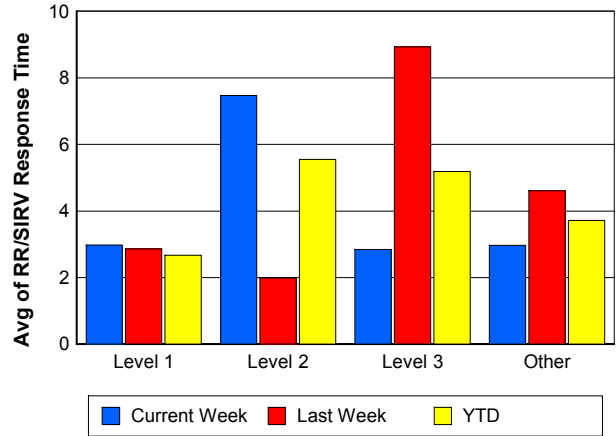
TMC Response Time



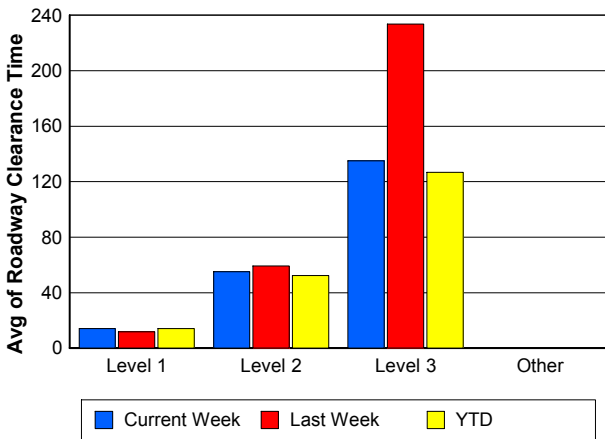
Road Ranger / SIRV Dispatch Time



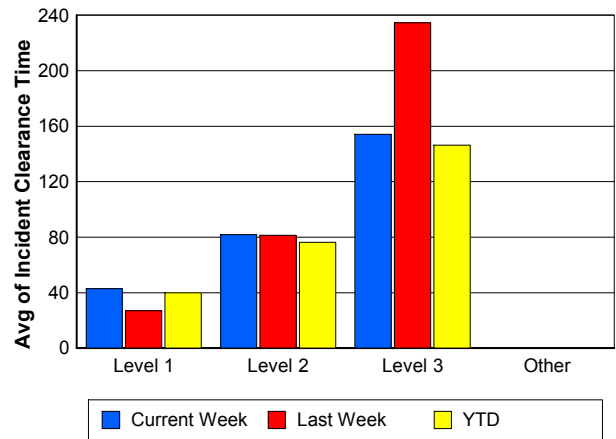
Road Ranger / SIRV Response Time



Roadway Clearance Time (2A)



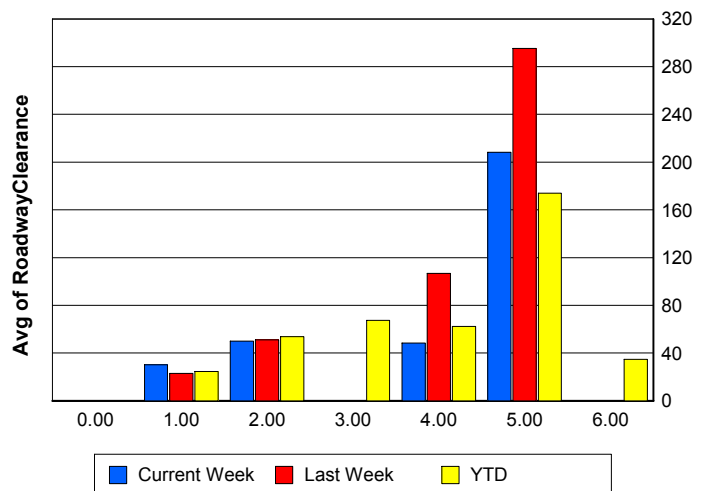
Incident Clearance Time (3B)



Roadway Clearance by Maximum Number of Lanes Blocked

	Current Week	Last Week	YTD
0			
1	30.16	23.01	24.44
2	50.11	51.10	53.75
3	0.00	0.00	67.43
4	48.47	106.80	62.34
5	208.24	295.32	173.87
6	0.00	0.00	34.87

Roadway Clearance Time (2A)



Performance Measures by Roadway

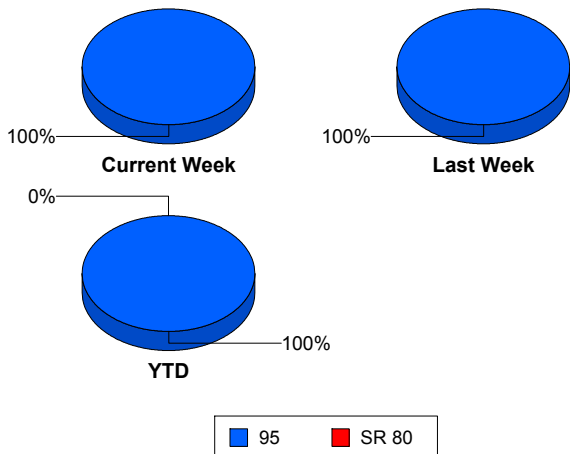
95

	<u>Current Week</u>	<u>Last Week</u>	<u>YTD</u>
Number of Events	316	302	4,967
Number of Incidents	26	31	336
TMC Detection (min.)	0.00	0.00	0.08
TMC Verification (min.)	2.85	3.65	3.32
TMC Response (min.)	5.01	5.37	5.57
RR Dispatch Time (min.)	1.97	0.90	1.89
RR Resp. Time (min.)	3.05	4.47	3.72
Event Clearance (min.)	27.14	26.52	23.85
Roadway Clear. (min.)	46.86	53.23	38.91
Incident Clearance (min.)	73.38	69.84	63.46
# of Events w/ RR/SIRV	271	250	3,970
RR/SIRV Responses	271	250	3,970
RR/SIRV Activities	316	280	4,417

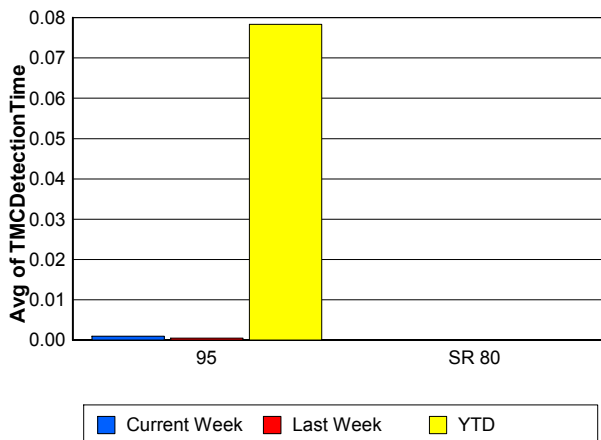
SR 80

	<u>YTD</u>
Number of Events	2
Number of Incidents	1
TMC Detection (min.)	0.00
TMC Verification (min.)	
TMC Response (min.)	
RR Dispatch Time (min.)	
RR Resp. Time (min.)	
Event Clearance (min.)	71.17
Roadway Clear. (min.)	34.23
Incident Clearance (min.)	43.68
# of Events w/ RR/SIRV	0
RR/SIRV Responses	0
RR/SIRV Activities	0

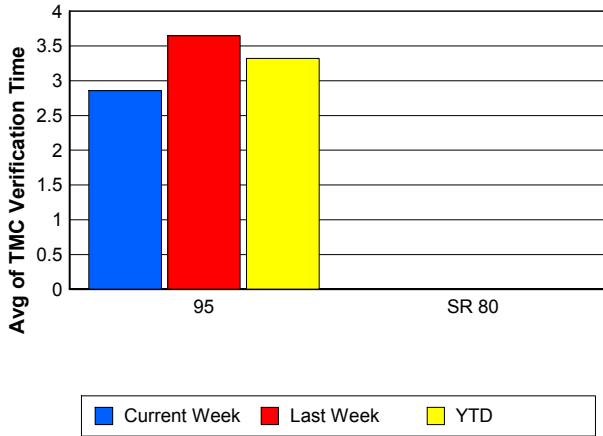
Number of Events / Roadway



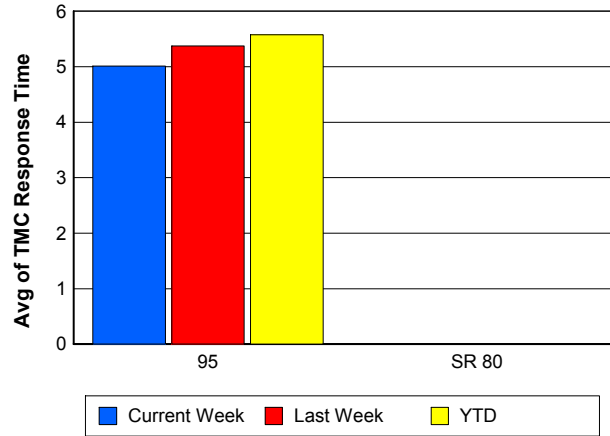
TMC Detection Time



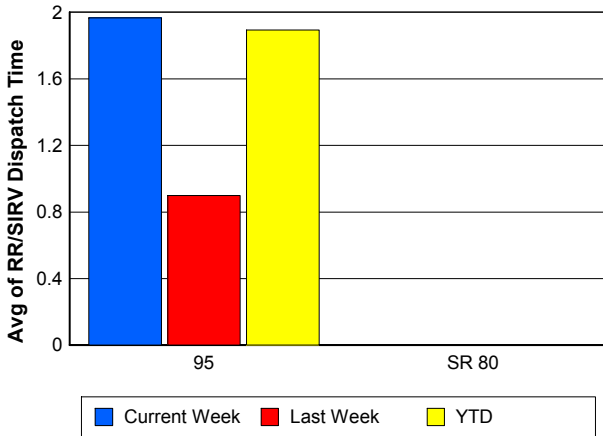
TMC Verification Time



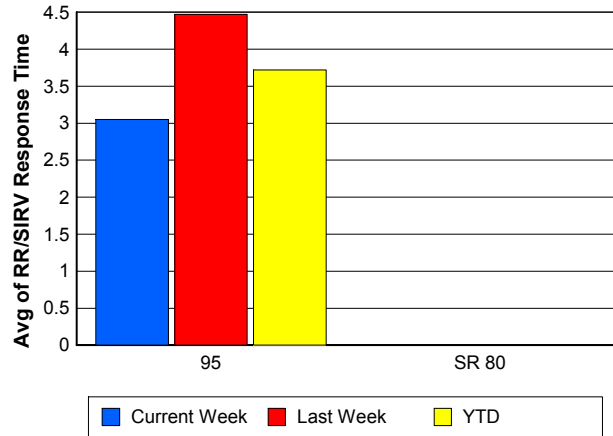
TMC Response Time



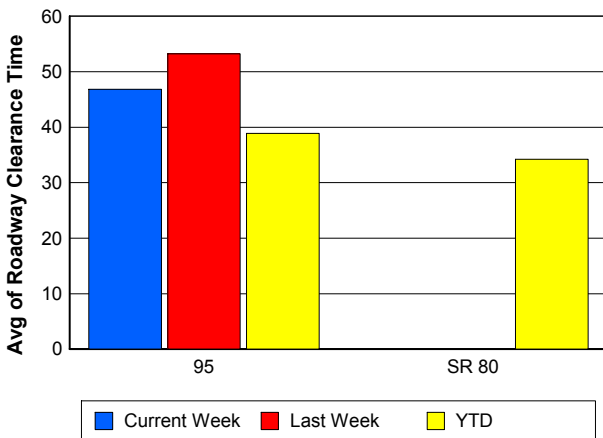
Road Ranger / SIRV Dispatch Time



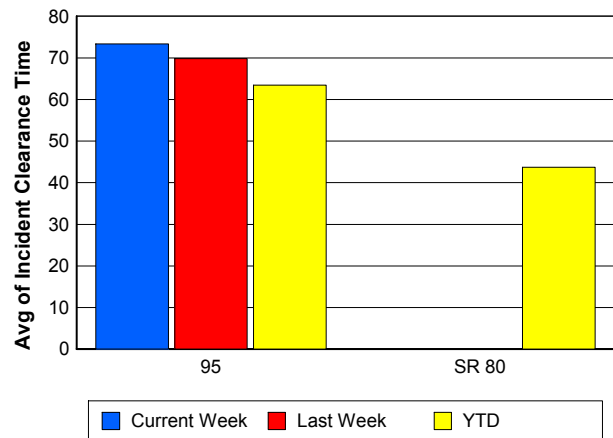
Road Ranger / SIRV Response Time



Roadway Clearance Time (2A)



Incident Clearance Time (3B)



Performance Measures by Event Type

Accident

	<u>Current Week</u>	<u>Last Week</u>	<u>YTD</u>
Number of Events	42	37	455
Number of Incidents	20	17	211
TMC Detection (min.)	0.00	0.00	0.01
TMC Verification (min.)	2.74	4.12	3.76
TMC Response (min.)	4.28	9.76	6.93
RR Dispatch Time (min.)	0.68	2.58	2.18
RR Response Time (min.)	3.60	7.18	4.75
Event Clearance (min.)	66.26	71.94	58.16
Roadway Clearance (min.)	50.22	70.87	43.61
Incident Clearance (min.)	81.81	93.94	73.04
# of Events w/ RR/SIRV	37	26	373
RR/SIRV Assists	37	26	373
RR/SIRV Activities	52	29	490

Debris on Roadway

	<u>Current Week</u>	<u>Last Week</u>	<u>YTD</u>
Number of Events	23	20	346
Number of Incidents	1	1	17
TMC Detection (min.)	0.00	0.00	0.00
TMC Verification (min.)	6.25	17.27	8.57
TMC Response (min.)	6.92	17.26	9.09
RR Dispatch Time (min.)	0.98	2.04	1.75
RR Response Time (min.)	5.95	15.23	7.35
Event Clearance (min.)	12.09	22.02	12.93
Roadway Clearance (min.)	3.47	19.87	13.63
Incident Clearance (min.)	22.75	24.97	16.40
# of Events w/ RR/SIRV	22	20	343
RR/SIRV Assists	22	20	343
RR/SIRV Activities	25	24	364

Disabled Vehicle

	<u>Current Week</u>	<u>Last Week</u>	<u>YTD</u>
Number of Events	221	216	3,436
Number of Incidents	4	10	78
TMC Detection (min.)	0.00	0.00	0.00
TMC Verification (min.)	2.77	2.40	3.18
TMC Response (min.)	4.96	2.99	4.55
RR Dispatch Time (min.)	2.35	0.54	1.51
RR Response Time (min.)	2.62	2.44	3.10
Event Clearance (min.)	20.54	15.56	18.20
Roadway Clearance (min.)	19.86	23.85	21.54
Incident Clearance (min.)	29.48	32.06	32.78
# of Events w/ RR/SIRV	202	199	3,116
RR/SIRV Assists	202	199	3,116
RR/SIRV Activities	230	222	3,434

Emergency Vehicles

	<u>YTD</u>
Number of Events	6
Number of Incidents	3
TMC Detection (min.)	0.00
TMC Verification (min.)	0.00
TMC Response (min.)	7.51
RR Dispatch Time (min.)	5.34
RR Response Time (min.)	2.17
Event Clearance (min.)	31.68
Roadway Clearance (min.)	34.97
Incident Clearance (min.)	40.08
# of Events w/ RR/SIRV	3
RR/SIRV Assists	3
RR/SIRV Activities	4

Other

	<u>Current Week</u>	<u>Last Week</u>	<u>YTD</u>
Number of Events	19	13	450
Number of Incidents	0	0	6
TMC Detection (min.)	0.00	0.00	0.00
TMC Verification (min.)	1.68	6.78	0.94
TMC Response (min.)	5.31	29.92	24.23
RR Dispatch Time (min.)	1.35	1.73	13.37
RR Response Time (min.)	3.93	28.19	7.93
Event Clearance (min.)	39.83	80.67	39.90
Roadway Clearance (min.)			38.11
Incident Clearance (min.)			52.15
# of Events w/ RR/SIRV	7	5	92
RR/SIRV Assists	7	5	92
RR/SIRV Activities	6	5	77

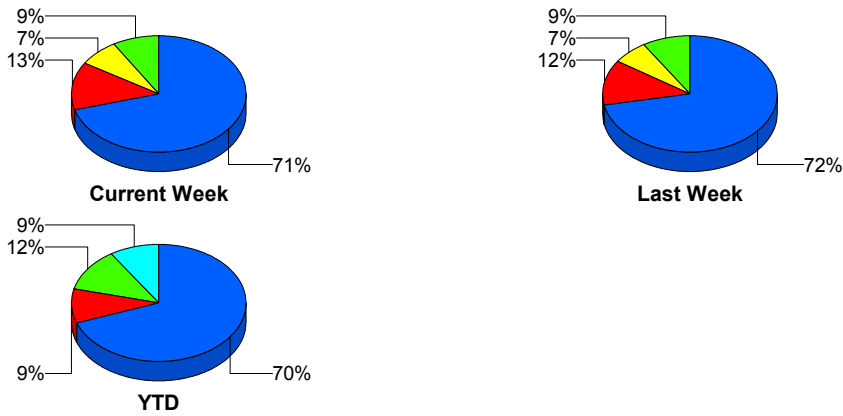
Police Activity

	<u>Current Week</u>	<u>Last Week</u>	<u>YTD</u>
Number of Events	8	14	239
Number of Incidents	1	3	17
TMC Detection (min.)	0.00	0.00	1.61
TMC Verification (min.)	0.00	0.00	1.75
TMC Response (min.)	8.22		11.40
RR Dispatch Time (min.)	1.88		8.36
RR Response Time (min.)	6.33		3.05
Event Clearance (min.)	23.39	34.19	25.34
Roadway Clearance (min.)	131.10	62.38	85.72
Incident Clearance (min.)	130.90	74.21	131.60
# of Events w/ RR/SIRV	1	0	17
RR/SIRV Assists	1	0	17
RR/SIRV Activities	1	0	19

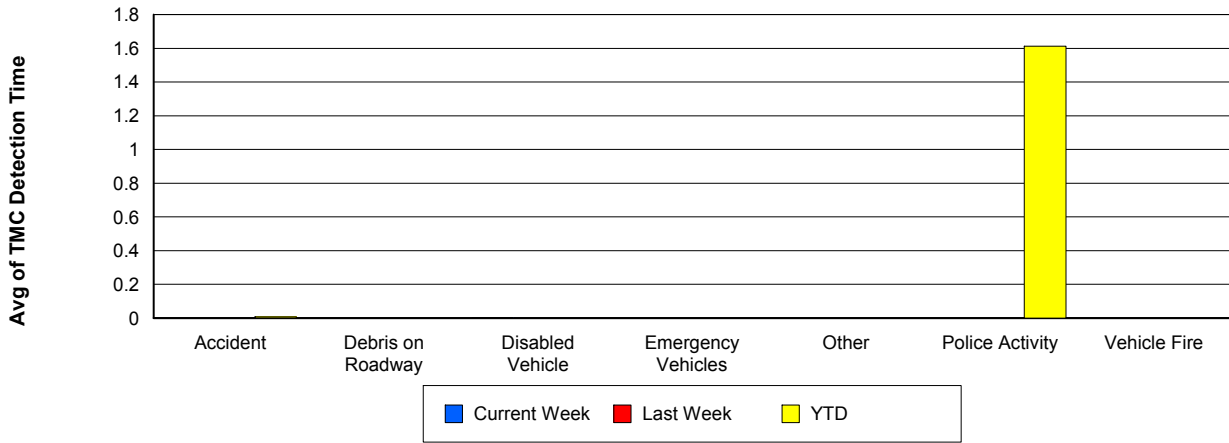
Vehicle Fire

	<u>YTD</u>
Number of Events	8
Number of Incidents	5
TMC Detection (min.)	0.00
TMC Verification (min.)	3.25
TMC Response (min.)	7.49
RR Dispatch Time (min.)	1.24
RR Response Time (min.)	6.25
Event Clearance (min.)	66.51
Roadway Clearance (min.)	40.97
Incident Clearance (min.)	89.54
# of Events w/ RR/SIRV	5
RR/SIRV Assists	5
RR/SIRV Activities	7

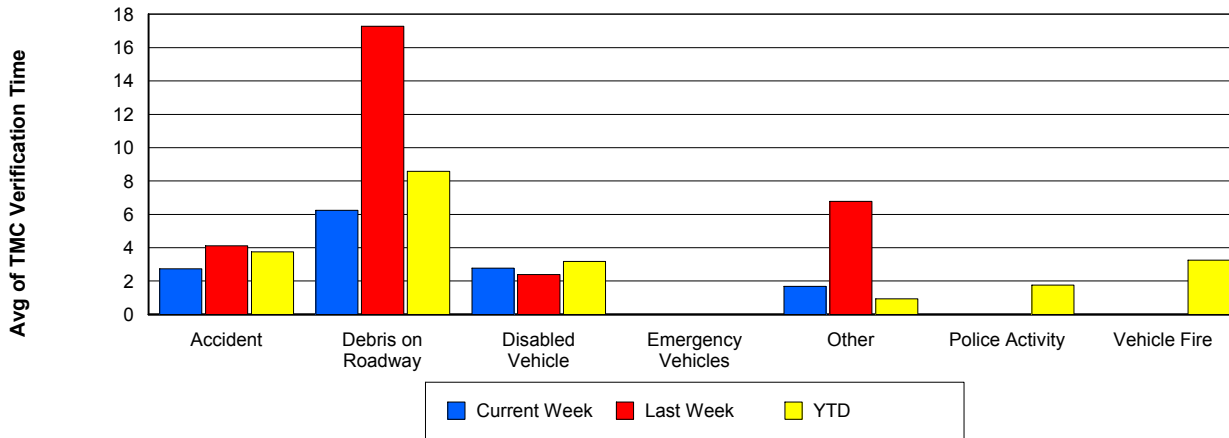
Number of Events / Event Type



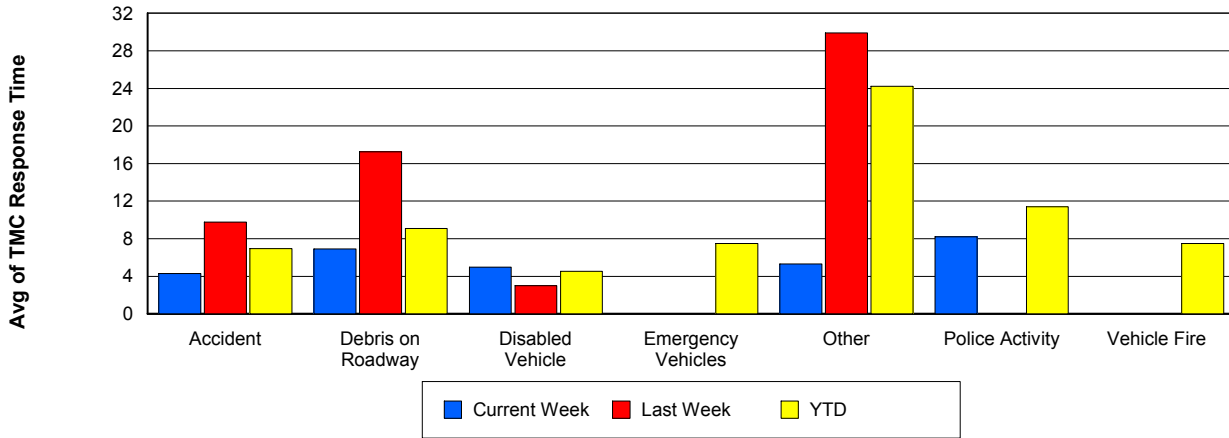
TMC Detection Time



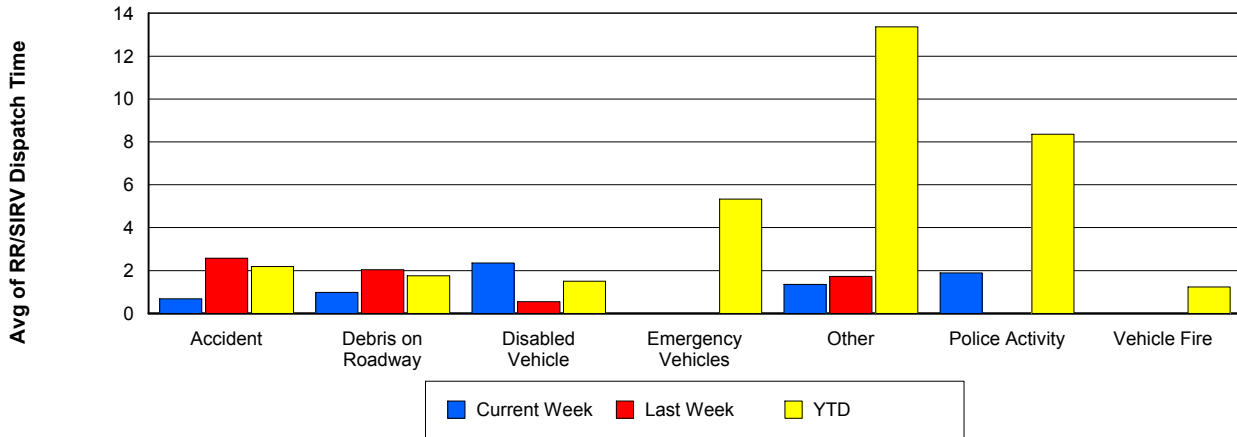
TMC Verification Time



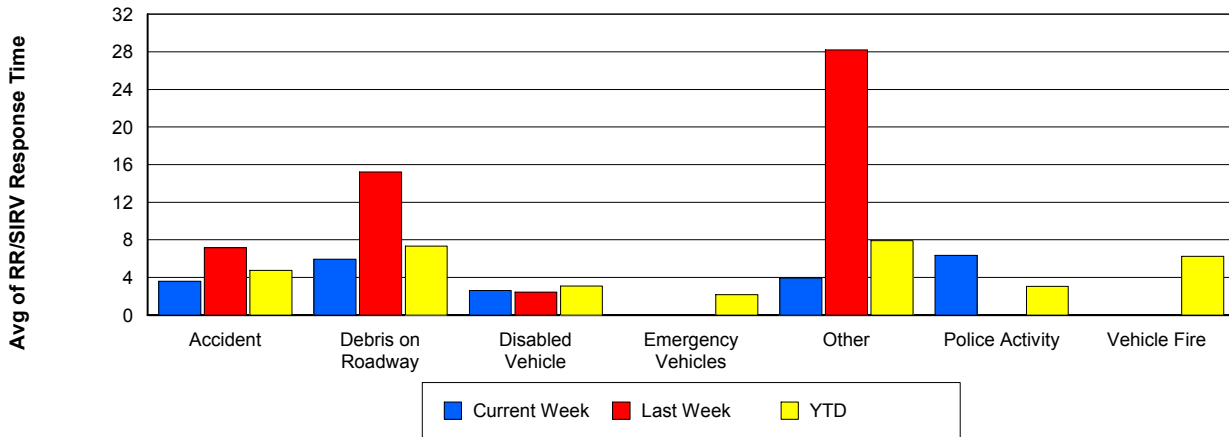
TMC Response Time



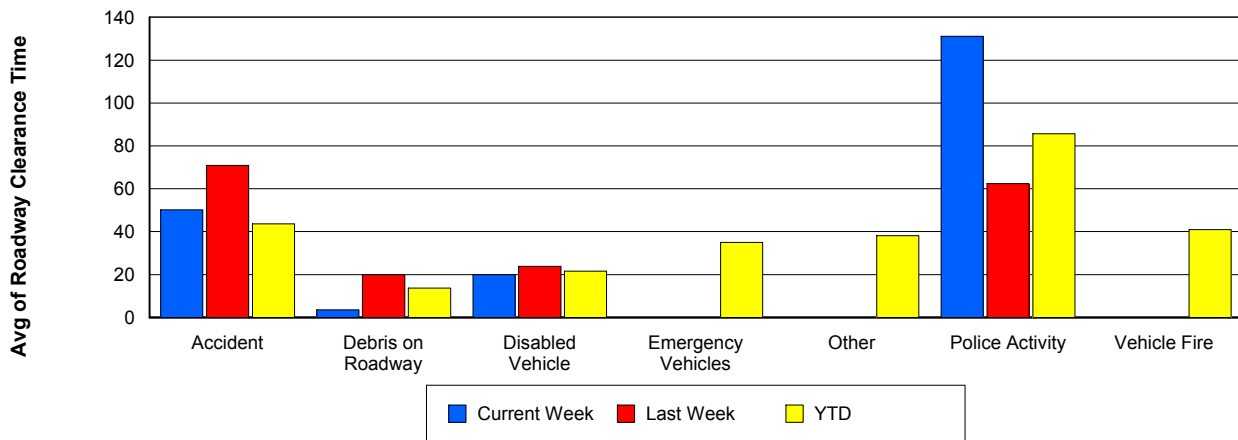
Road Ranger / SIRV Dispatch Time



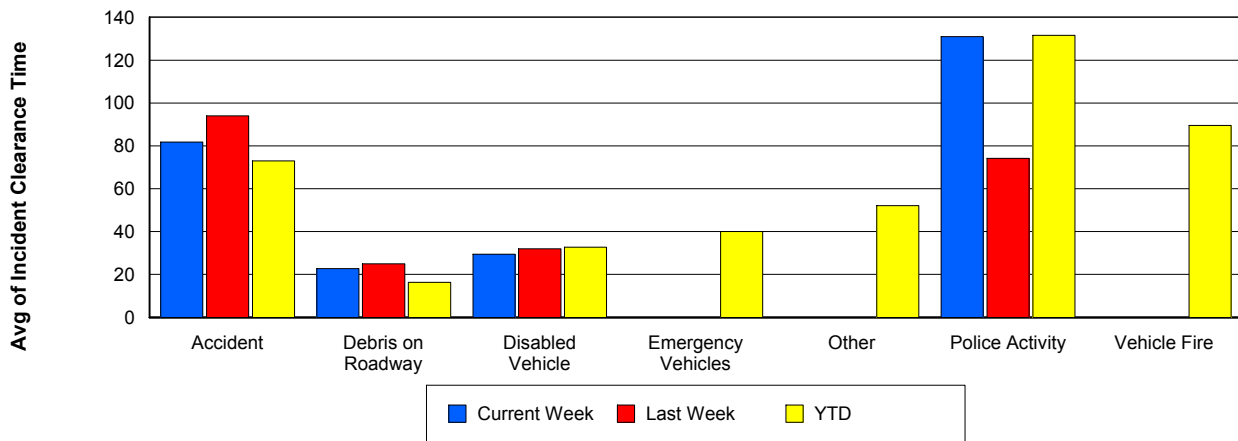
Road Ranger / SIRV Response Time



Roadway Clearance Time (2A)



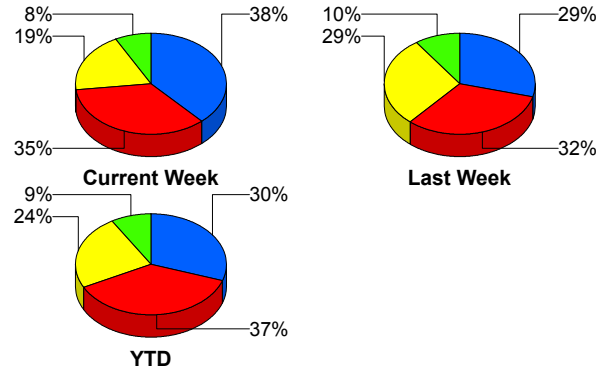
Incident Clearance Time (3B)



Incident Detection Methods

	Current Week	Last Week	YTD
Broward CCTV	0	1	5
Broward Road Ranger	1	0	3
District 4	1	1	6
FHP	5	9	81
I-95 Construction PIO	0	0	2
ITMS	0	0	3
ITMS CCTV	10	9	102
Local Police	0	0	1
Motorist	0	0	6
Palm Beach Road Ran	9	10	125
Road Watcher	0	0	1
SmarTraveler (511)	0	1	2
Total	26	31	337

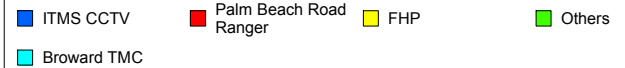
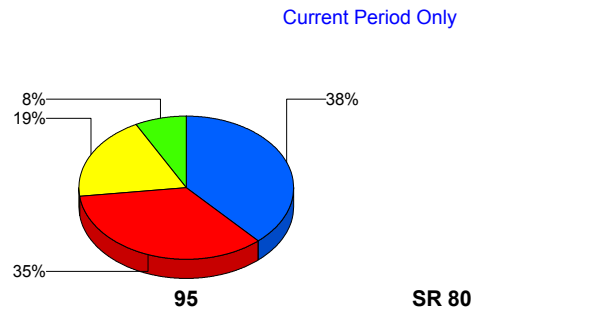
Total Incidents by Detection Method



Incident Detection Methods by Roadway

		Current Week	Last Week	YTD
95	Broward CCTV	0	1	5
	Broward Road Ranger	1	0	3
	District 4	1	1	6
	FHP	5	9	80
	I-95 Construction PIO	0	0	2
	ITMS	0	0	3
	ITMS CCTV	10	9	102
	Local Police	0	0	1
	Motorist	0	0	6
	Palm Beach Road Ran	9	10	125
	Road Watcher	0	0	1
	SmarTraveler (511)	0	1	2
	Total	26	31	336
SR 80	FHP	0	0	1

Total Events by Roadway and Detection Method

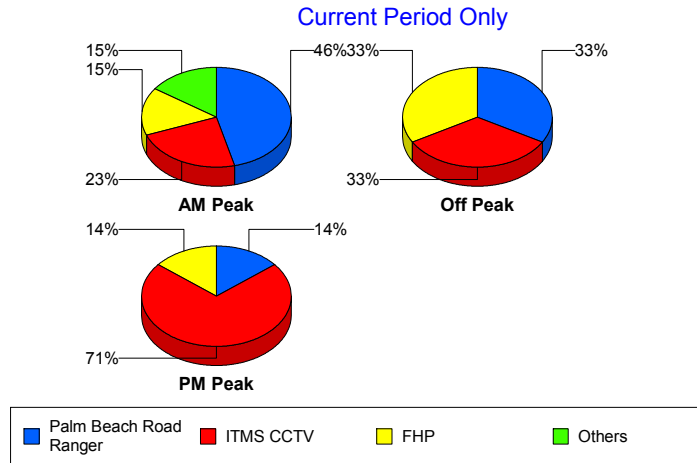


		Current Week	Last Week	YTD
SR 80	Total	0	0	1
Total		26	31	337

Incident Detection Methods by Peak Period

		Current Week	Last Week	YTD
AM Peak	Broward CCTV	0	1	1
	Broward Road Ranger	1	0	2
	District 4	1	1	4
	FHP	2	1	29
	ITMS	0	0	2
	ITMS CCTV	3	0	14
	Motorist	0	0	2
	Palm Beach Road Ran	6	4	42
	Road Watcher	0	0	1
	SmarTraveler (511)	0	1	2
	Total	13	8	99
Off Peak	Broward CCTV	0	0	4
	Broward Road Ranger	0	0	1
	District 4	0	0	2
	FHP	2	8	32
	I-95 Construction PIO	0	0	2
	ITMS	0	0	1
	ITMS CCTV	2	6	51
	Motorist	0	0	1
	Palm Beach Road Ran	2	5	49
	Total	6	19	143
PM Peak	FHP	1	0	20
	ITMS CCTV	5	3	37
	Local Police	0	0	1
	Motorist	0	0	3
	Palm Beach Road Ran	1	1	34
	Total	7	4	95

Total Events by Peak Period and Detection Method

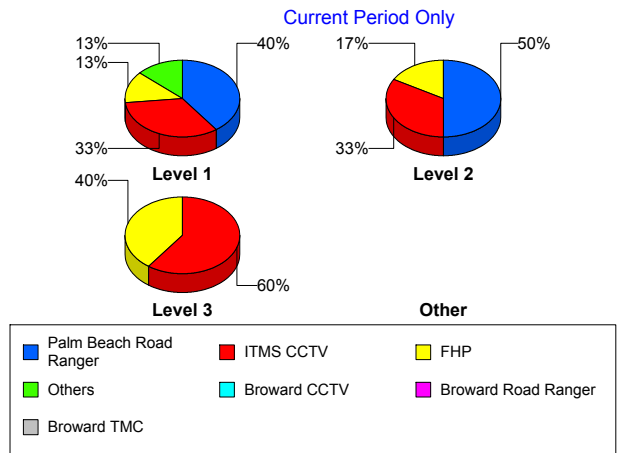


	Current Week	Last Week	YTD
Total	26	31	337

Incident Detection Methods by Severity

		Current Week	Last Week	YTD
Level 1	Broward CCTV	0	1	3
	Broward Road Ranger	1	0	2
	District 4	1	0	5
	FHP	2	4	36
	I-95 Construction PIO	0	0	1
	ITMS	0	0	1
	ITMS CCTV	5	4	43
	Local Police	0	0	1
	Motorist	0	0	4
	Palm Beach Road Ran	6	6	94
	Road Watcher	0	0	1
	SmarTraveler (511)	0	0	1
	Total	15	15	192
	Level 2	Broward Road Ranger	0	0
District 4		0	1	1
FHP		1	3	34
I-95 Construction PIO		0	0	1
ITMS		0	0	2
ITMS CCTV		2	4	40
Motorist		0	0	1
Palm Beach Road Ran		3	4	26
SmarTraveler (511)		0	1	1
Total		6	13	107
Level 3	Broward CCTV	0	0	2
	FHP	2	2	11
	ITMS CCTV	3	1	19
	Motorist	0	0	1
	Palm Beach Road Ran	0	0	5

Total Events by Severity and Detection Method



		Current Week	Last Week	YTD
Level 3	Total	5	3	38
Total		26	31	337

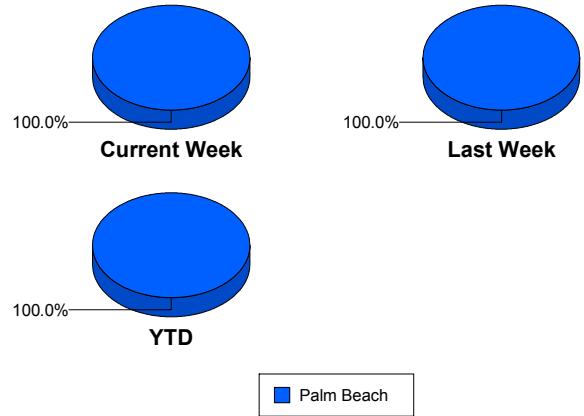
Road Ranger / SIRV Performance Measures

Road Ranger / SIRV Performance By County

RR/SIRV Responses per County

Values presented are: - Total Events with a RR/SIRV Response - Total RR/SIRV Responses, - Total Activities Performed

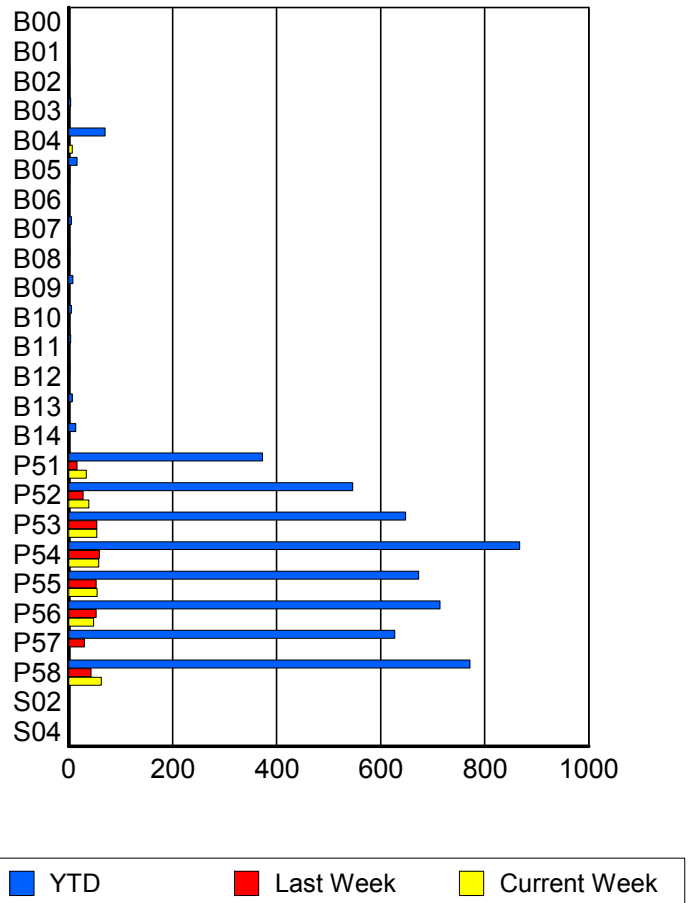
	Current We	Last Week	YTD
Palm Beach	344	331	5,183
	362	342	5,364
	395	362	5,739



Road Ranger / SIRV Performance By Truck

	Current We	Last Week	YTD
B00	0	0	1
	0	0	1
	0	0	1
B01	0	0	1
	0	0	1
	0	0	1
B02	0	1	2
	0	1	2
	0	1	2
B03	0	0	4
	0	0	4
	0	0	4
B04	7	1	69
	7	1	70
	8	1	79
B05	2	2	15
	2	2	16
	2	3	17
B06	0	0	1
	0	0	1
	0	0	1
B07	1	0	5
	1	0	5
	1	0	5
B08	0	0	2
	0	0	2
	0	0	2

**RR/SIRV
Responses per
Truck**



	Current We	Last Week	YTD
B09	0 0 0	0 0 0	8 8 8
B10	0 0 0	0 0 0	5 5 5
B11	0 0 0	0 0 0	4 4 4
B12	0 0 0	1 1 1	2 2 2
B13	0 0 0	0 0 0	7 7 7
B14	0 0 0	1 1 1	14 14 15
P51	32 34 36	16 16 17	369 373 393
P52	39 39 41	28 28 29	542 546 582
P53	53 54 59	53 54 56	639 648 696
P54	57 58 67	59 59 62	859 867 927
P55	55 55 58	51 53 53	666 673 718
P56	48 48 51	52 53 55	704 714 776
P57	0 0 0	30 30 35	625 627 679
P58	62 63 71	43 43 48	764 772 813
S02	1 1 1	0 0 0	1 1 1

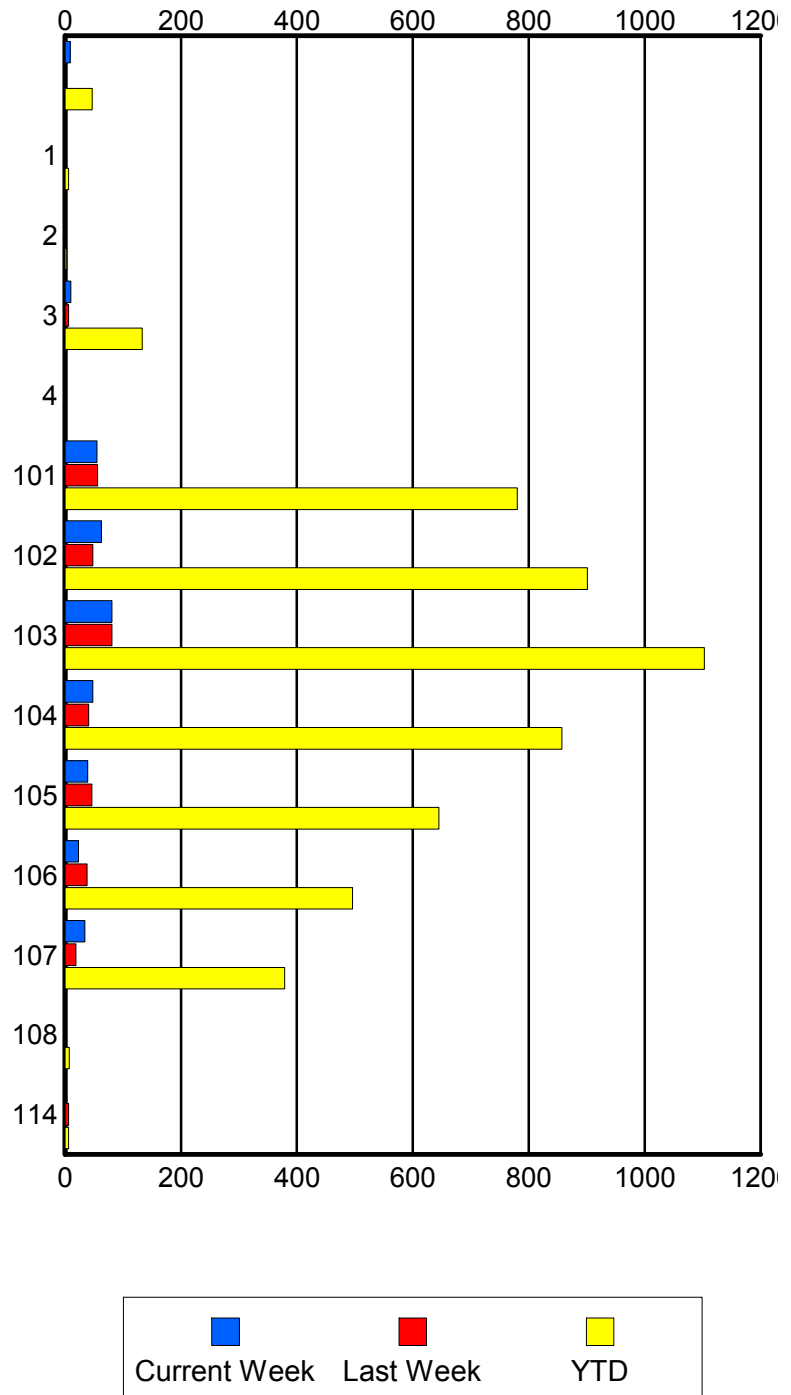
	Current We	Last Week	YTD
S04	0	0	1
	0	0	1
	0	0	1

Road Ranger / SIRV Performance By Beat

	Current We	Last Week	YTD
	9	1	47
	9	1	47
	9	1	47
1	0	0	6
	0	0	6
	0	0	7
2	0	0	3
	0	0	3
	0	0	4
3	10	6	131
	10	6	133
	11	7	142
4	0	0	1
	0	0	1
	0	0	1
101	54	54	770
	55	56	780
	58	59	845
102	62	48	893
	63	48	901
	71	53	956
103	80	79	1,090
	81	81	1,103
	93	86	1,193
104	48	41	850
	48	41	857
	50	42	920
105	39	46	640
	39	46	645
	42	47	685
106	23	38	489
	23	38	496
	25	41	530
107	32	19	375
	34	19	379
	36	20	396
108	0	0	6
	0	0	7
	0	0	7
114	0	6	6
	0	6	6
	0	6	6

Values presented are:
 - Total Events with a RR/SIRV Response
 - Total RR/SIRV Responses,
 - Total Activities Performed

RR/SIRV Responses per Beat

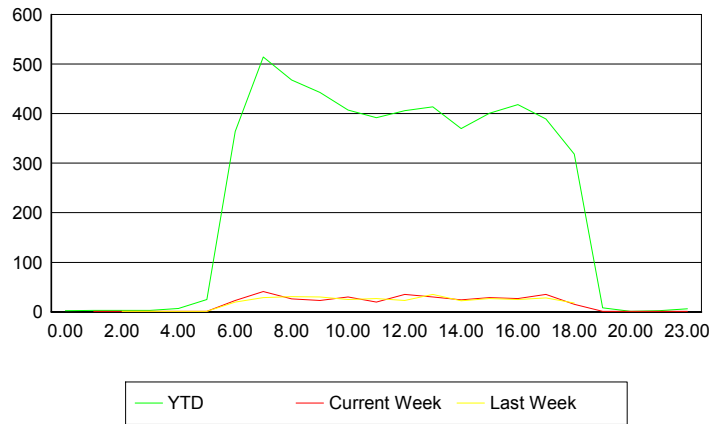


Road Ranger / SIRV Performance By Time of Day

Values presented are:
 - Total Events with a RR/SIRV Response
 - Total RR/SIRV Responses,
 - Total Activities Performed

	Current We	Last Week	YTD
12AM-1AM	0 0 0	0 0 0	2 2 2
1AM-2AM	1 1 1	0 0 0	3 3 3
2AM-3AM	0 0 0	1 1 1	3 3 3
3AM-4AM	0 0 0	0 0 0	3 3 3
4AM-5AM	0 0 0	0 0 0	4 7 8
5AM-6AM	1 1 1	1 1 1	23 25 25
6AM-7AM	21 23 24	20 20 20	350 364 385
7AM-8AM	40 41 46	29 29 29	493 514 550
8AM-9AM	25 26 27	31 31 32	450 468 501
9AM-10AM	23 23 25	28 30 33	430 443 492
10AM-11AM	28 30 33	25 25 25	393 407 435
11AM-12PM	20 20 22	26 27 31	379 392 429
12PM-1PM	33 35 37	21 23 24	393 406 435

Number of Responses / Hour of the Day



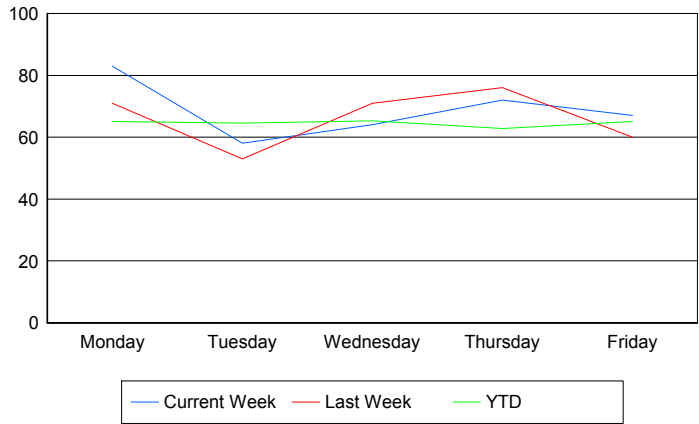
	Current We	Last Week	YTD
1PM-2PM	30	31	402
	30	35	414
	35	37	447
2PM-3PM	23	21	357
	24	22	370
	25	23	389
3PM-4PM	27	27	388
	29	27	401
	33	31	426
4PM-5PM	24	25	403
	27	25	418
	30	27	441
5PM-6PM	31	28	377
	35	28	389
	39	29	415
6PM-7PM	15	17	314
	15	18	318
	15	19	332
7PM-8PM	1	0	8
	1	0	8
	1	0	9
8PM-9PM	0	0	1
	0	0	1
	0	0	1
10PM-11PM	0	0	2
	0	0	2
	0	0	2
11PM-12AM	1	0	5
	1	0	6
	1	0	6

Road Ranger / SIRV Performance By Day of Week

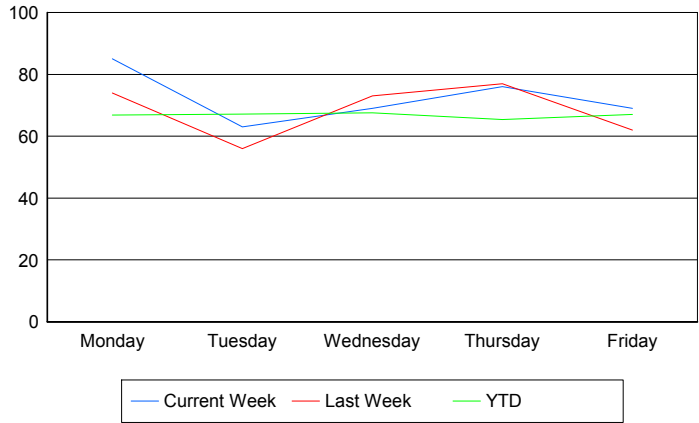
Values presented are:
 - Total Events with a RR/SIRV Response
 - Total RR/SIRV Responses,
 - Total Activities Performed

	Current We	Last Week	YTD
Monday	83	71	1,017
	85	74	1,044
	89	77	1,102
Tuesday	58	53	1,012
	63	56	1,052
	71	57	1,123
Wednesday	64	71	1,032
	69	73	1,067
	77	82	1,149
Thursday	72	76	1,041
	76	77	1,085
	86	80	1,169
Friday	67	60	1,083
	69	62	1,116
	72	66	1,196

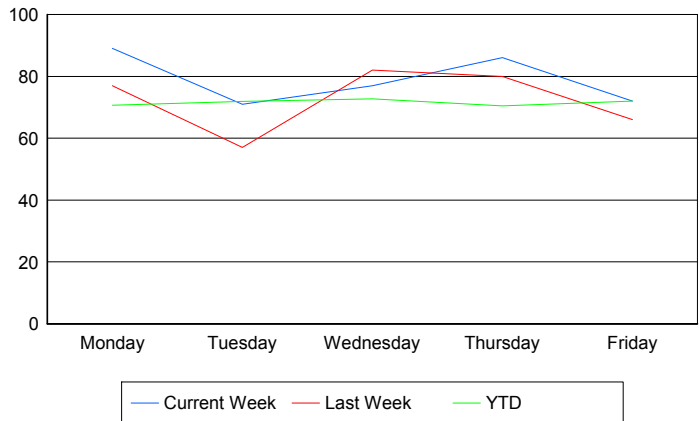
Avg # of events with a RR/SIRV Response per Day of the Week



Avg # of RR/SIRV Responses per Day of the Week



Avg # of RR/SIRV Activities Performed per Day of the Week



Road Ranger / SIRV Responses per Time of Day and Day of Week

