

Weekly Performance Measures Report Palm Beach County



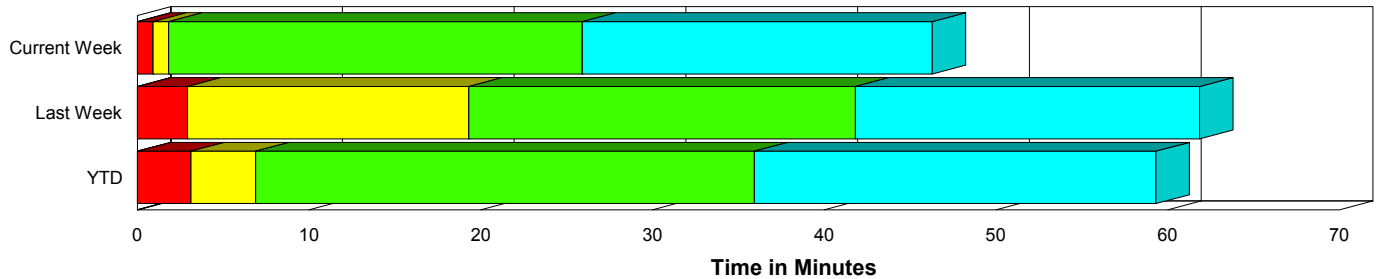
Created on:
June 15, 2009
3:28 pm

Period From Jun 7, 2009 to Jun 13, 2009

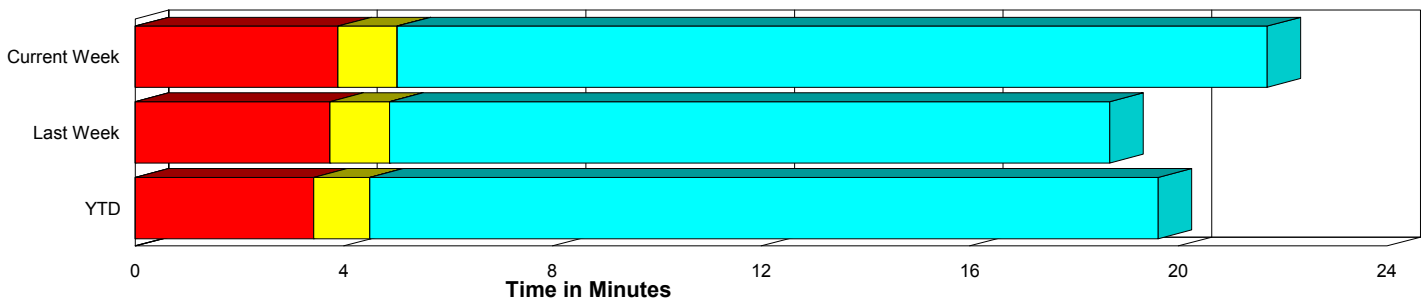
Performance Measures Summary

	Traffic Events (No Lanes Blocked)			Incidents (Lanes Blocked)		
	<u>This Week</u>	<u>Last Week</u>	<u>YTD</u>	<u>This Week</u>	<u>Last Week</u>	<u>YTD</u>
Number of Events	293	320	6,690	15	17	469
TMC Detection (min.)	0.00	0.00	0.00	0.00	0.00	0.02
TMC Verification (min.)	3.89	3.73	3.43	0.91	2.93	3.12
TMC Response (min.)	5.79	5.53	5.34	2.21	20.20	7.64
RR Dispatch Time (min.)	1.50	1.91	1.70	1.08	14.67	3.46
RR Response Time (min.)	4.30	3.61	3.68	1.13	5.53	4.17
Roadway Clearance (min.)				28.12	41.34	50.37
Event Clearance (min.)	22.47	19.34	20.46	48.41	61.32	73.23
# of Events w/ RR/SIRV	248	278	5,478	10	13	361
RR/SIRV Responses	248	278	5,478	10	13	361
RR/SIRV Activities	265	300	5,934	15	15	530

Incident Clearance Time-Line



Traffic Event (Non-Lane Blockage) Time-Line



■ Avg. TMC Detection Time	■ Avg. Time from TMC Response to Roadway Clearance*
■ Avg. Time from TMC Detection to TMC Verification	■ Avg. Time from Roadway Clearance to Incident/Event Clearance**
■ Avg. Time from TMC Verification to TMC Response	

* Roadway clearance equals all travel lanes open

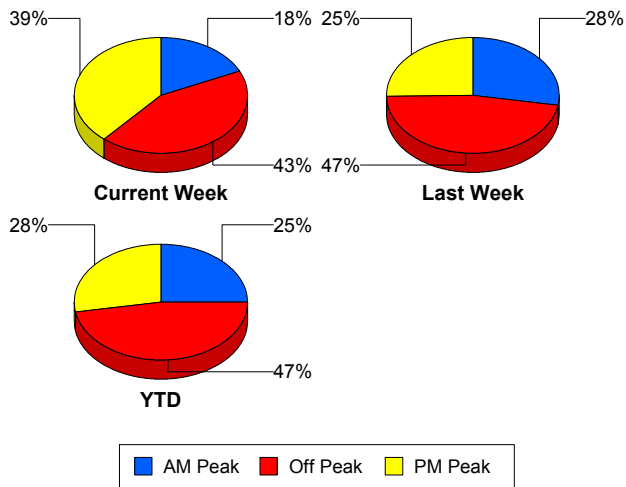
** Incident clearance equals time when last responder has left the scene

Performance Measures by Peak Period

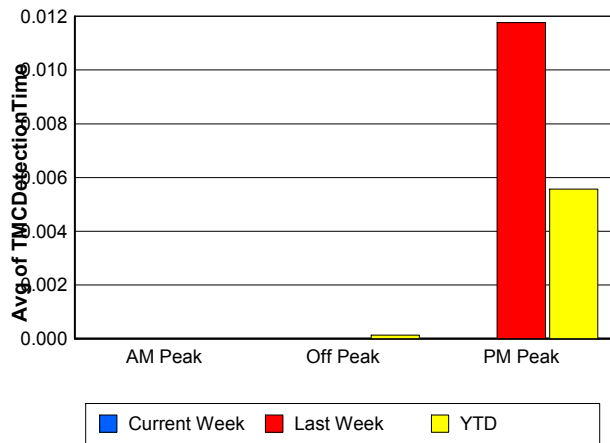
Note: AM peak period is defined as 6am to 10am and PM peak period is defined as 3pm to 7pm.

	AM Peak			Off Peak			PM Peak		
	Current Week	Last Week	YTD	Current Week	Last Week	YTD	Current Week	Last Week	YTD
Number of Events	56	94	1,794	133	158	3,382	119	85	1,983
Number of Incidents	2	5	144	6	9	194	7	3	131
TMC Detection (min.)	0.00	0.00	0.00	0.00	0.00	0.00	0.00	0.01	0.01
TMC Verification (min.)	1.30	4.11	3.18	2.65	2.53	2.92	6.16	5.40	4.45
TMC Response (min.)	1.72	5.07	4.33	6.30	7.25	6.49	7.07	5.84	5.31
RR Dispatch Time (min.)	0.43	1.14	1.08	3.00	4.48	2.80	0.73	0.97	1.25
RR Response Time (min.)	1.29	3.93	3.29	3.28	2.75	3.71	6.40	4.90	4.08
Event Clearance (min.)	22.66	16.93	22.03	28.32	25.40	26.09	19.12	19.16	21.93
Roadway Clearance (min.)	71.11	31.50	38.98	28.19	39.90	44.97	15.78	62.06	70.88
Incident Clearance (min.)	107.06	32.02	62.81	40.93	69.14	70.36	38.07	86.69	88.93
# of Events w/ RR/SIRV	54	89	1,702	93	121	2,294	111	81	1,843
RR/SIRV Responses	54	89	1,702	93	121	2,294	111	81	1,843
RR/SIRV Activities	63	93	1,936	103	133	2,530	114	89	1,998

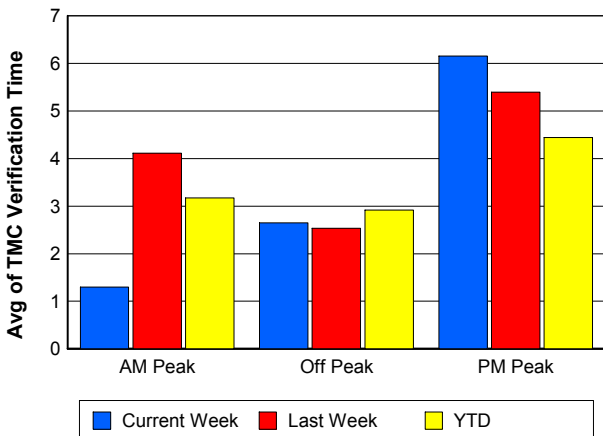
Number of Events / Peak Period



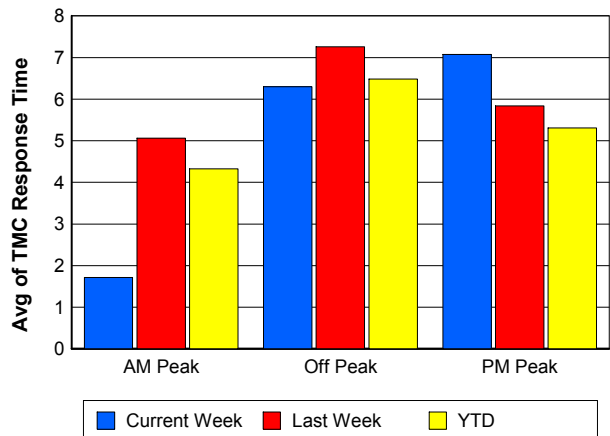
TMC Detection Time



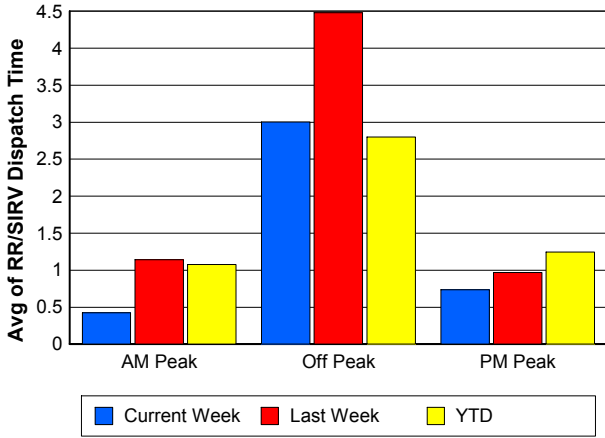
TMC Verification Time



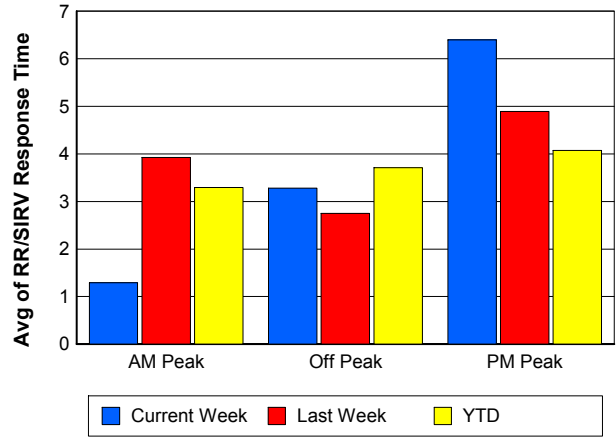
TMC Response Time



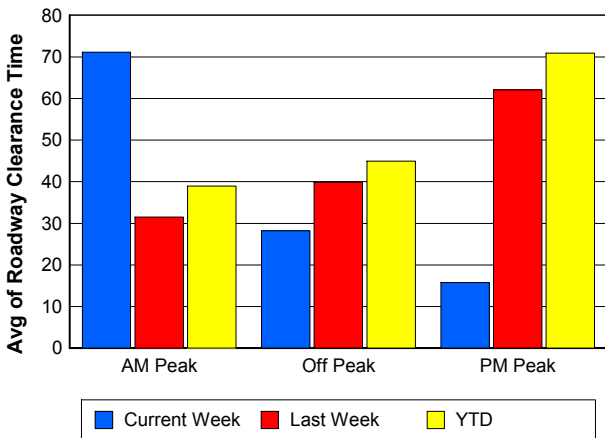
Road Ranger / SIRV Dispatch Time



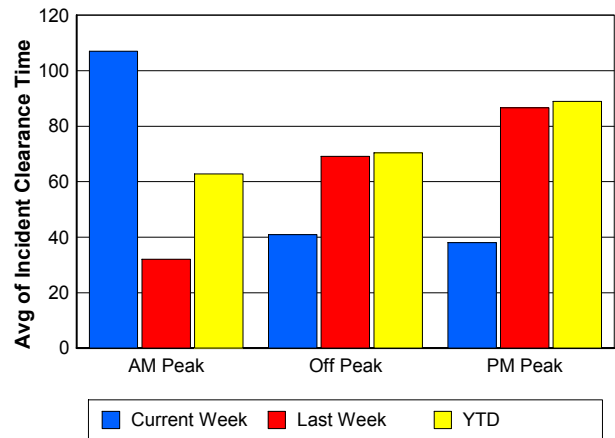
Road Ranger / SIRV Response Time



Roadway Clearance Time (2A)



Incident Clearance Time (3B)

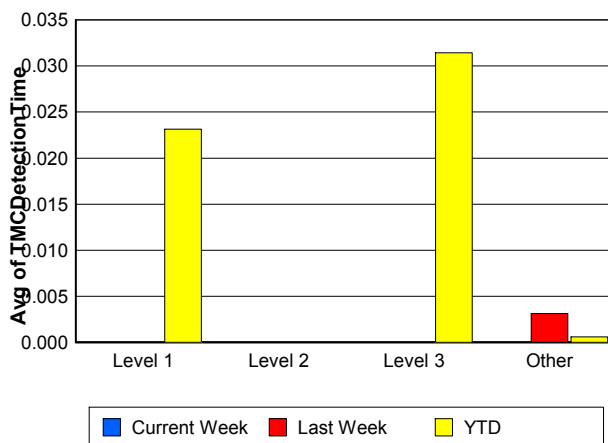
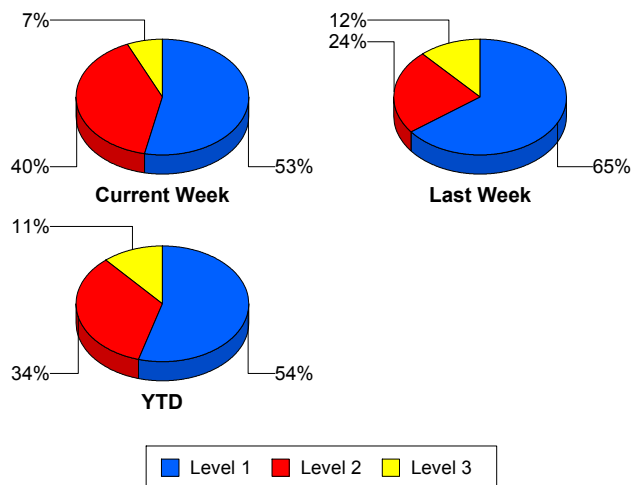


Performance Measures by Severity

	Level 1			Level 2			Level 3			Other		
	<u>This Week</u>	<u>Last Week</u>	<u>YTD</u>	<u>This Week</u>	<u>Last Week</u>	<u>YTD</u>	<u>This Week</u>	<u>Last Week</u>	<u>YTD</u>	<u>This Week</u>	<u>Last Week</u>	<u>YTD</u>
Number of Events	8	11	255	6	4	161	1	2	53	293	320	6,690
Number of Incidents	8	11	255	6	4	161	1	2	53	0	0	0
TMC Detection (min.)	0.00	0.00	0.02	0.00	0.00	0.00	0.00	0.00	0.03	0.00	0.00	0.00
TMC Verification (min.)	1.62	3.44	2.39	0.11	2.96	3.73	0.00	0.00	4.77	3.89	3.73	3.43
TMC Response (min.)	1.85	5.02	4.18	4.59	19.63	8.59	0.00	89.09	24.86	5.79	5.53	5.34
RR Dispatch Time (min.)	0.25	1.20	1.05	4.53	13.97	3.05	0.00	75.98	18.79	1.50	1.91	1.70
RR Resp. Time (min.)	1.60	3.82	3.15	0.06	5.66	5.54	0.00	13.11	6.07	4.30	3.61	3.68
Event Clearance (min.)	30.18	36.10	39.63	71.89	61.32	75.69	53.37	200.00	227.41	22.47	19.34	20.46
Roadway Clear. (min.)	11.75	14.13	14.50	49.01	42.64	53.63	33.82	188.41	213.04			
Incident Clearance (min.)	30.18	36.10	39.63	71.89	61.32	75.69	53.37	200.00	227.41			
# of Events w/ RR/SIRV	7	9	216	2	2	108	1	2	37	248	278	5,478
RR/SIRV Responses	7	9	216	2	2	108	1	2	37	248	278	5,478
RR/SIRV Activities	8	11	283	6	2	183	1	2	64	265	300	5,934

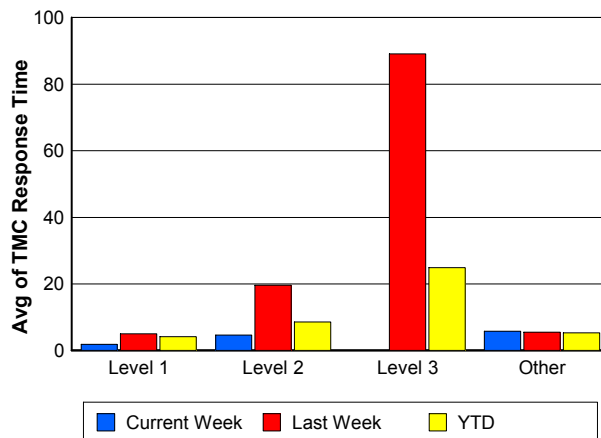
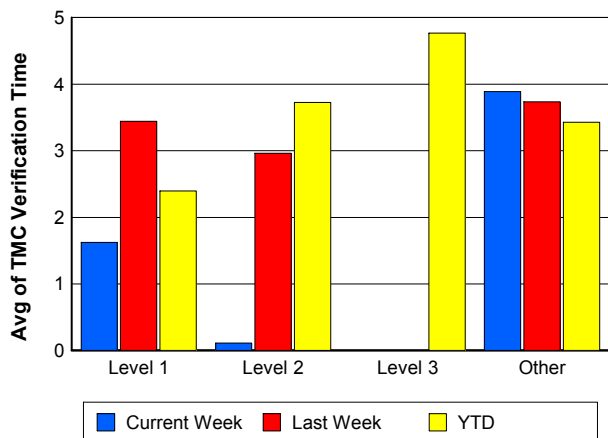
Number of Events / Severity

TMC Detection Time

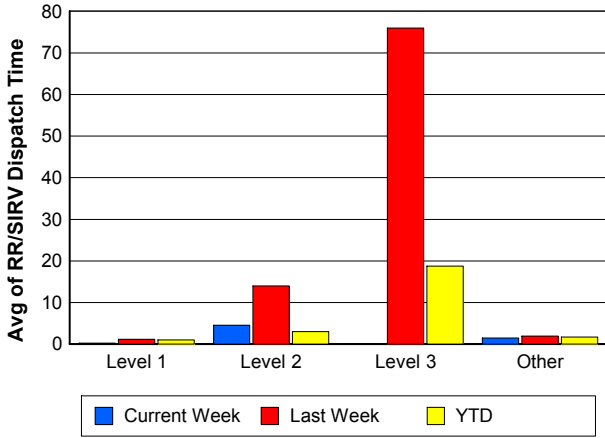


TMC Verification Time

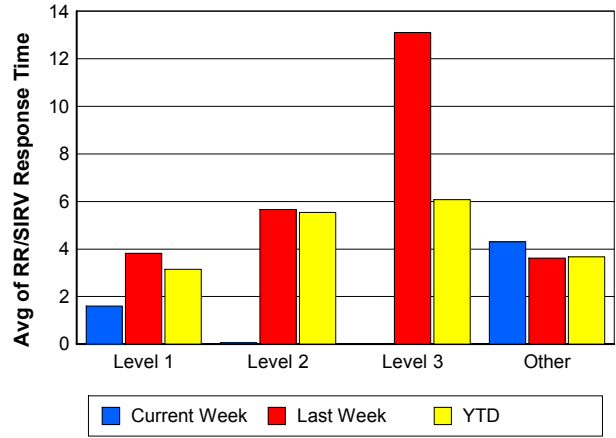
TMC Response Time



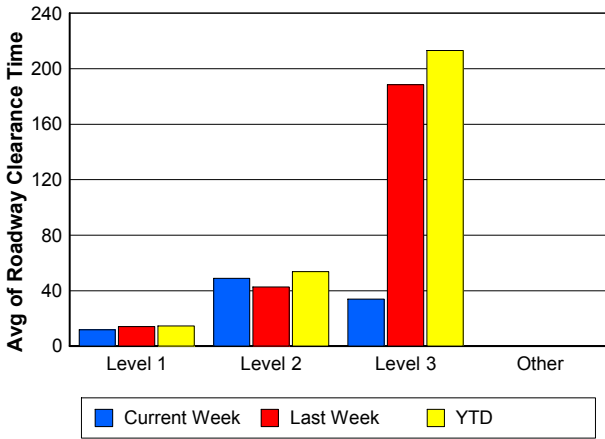
Road Ranger / SIRV Dispatch Time



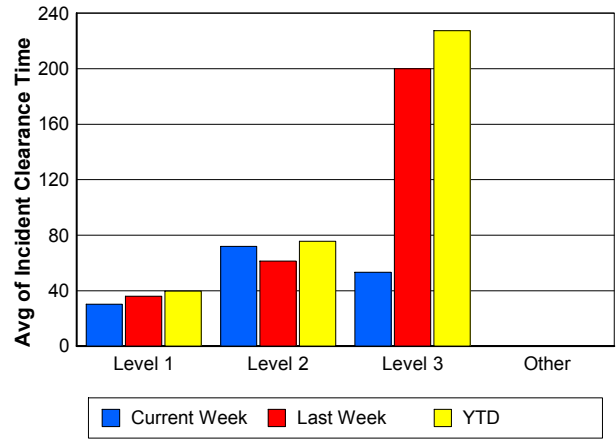
Road Ranger / SIRV Response Time



Roadway Clearance Time (2A)



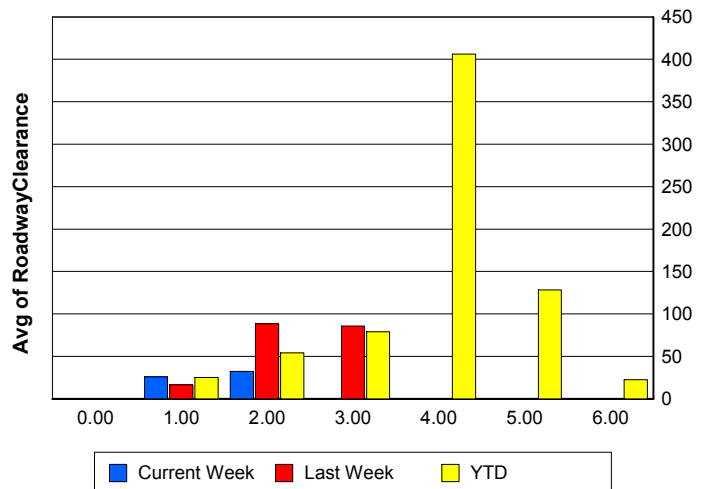
Incident Clearance Time (3B)



Roadway Clearance by Maximum Number of Lanes Blocked

	Current Week	Last Week	YTD
0			
1	25.95	16.43	25.08
2	32.46	88.36	54.12
3	0.00	85.68	79.08
4	0.00	0.00	406.12
5	0.00	0.00	128.32
6	0.00	0.00	22.35

Roadway Clearance Time (2A)



Performance Measures by Roadway

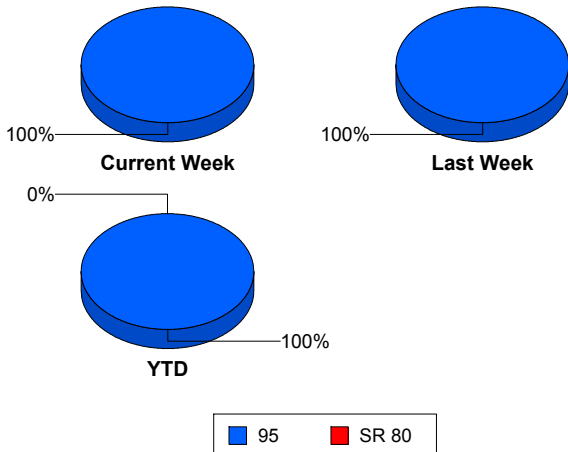
95

	<u>Current Week</u>	<u>Last Week</u>	<u>YTD</u>
Number of Events	308	337	7,156
Number of Incidents	15	17	467
TMC Detection (min.)	0.00	0.00	0.00
TMC Verification (min.)	3.74	3.69	3.41
TMC Response (min.)	5.65	6.20	5.48
RR Dispatch Time (min.)	1.49	2.48	1.81
RR Resp. Time (min.)	4.17	3.70	3.71
Event Clearance (min.)	23.74	21.46	23.17
Roadway Clear. (min.)	28.12	41.34	39.17
Incident Clearance (min.)	48.41	61.32	62.10
# of Events w/ RR/SIRV	258	291	5,839
RR/SIRV Responses	258	291	5,839
RR/SIRV Activities	280	315	6,464

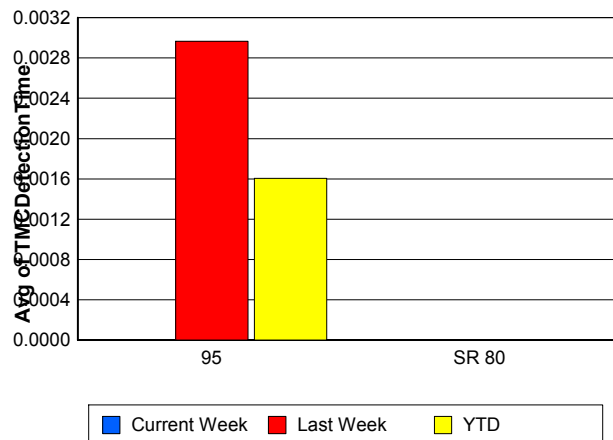
SR 80

	<u>YTD</u>
Number of Events	3
Number of Incidents	2
TMC Detection (min.)	0.00
TMC Verification (min.)	0.00
TMC Response (min.)	
RR Dispatch Time (min.)	
RR Resp. Time (min.)	
Event Clearance (min.)	1,813.57
Roadway Clear. (min.)	2,663.80
Incident Clearance (min.)	2,671.02
# of Events w/ RR/SIRV	0
RR/SIRV Responses	0
RR/SIRV Activities	0

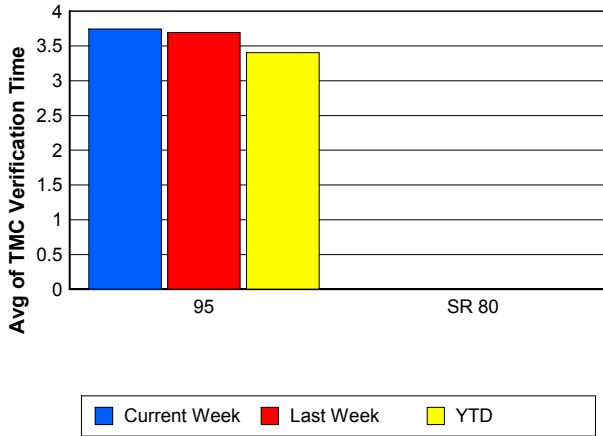
Number of Events / Roadway



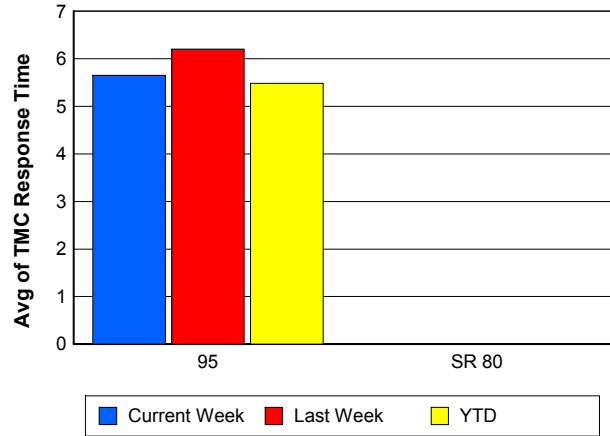
TMC Detection Time



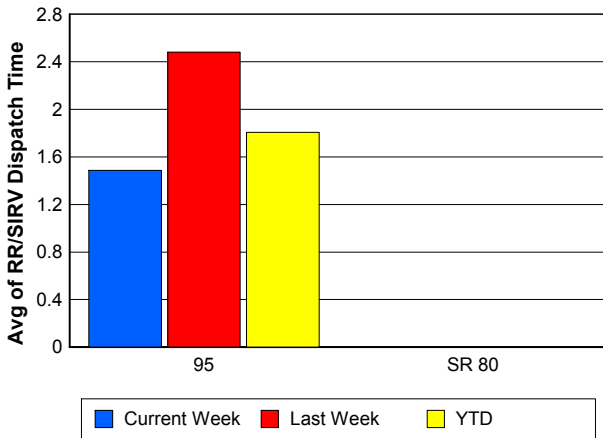
TMC Verification Time



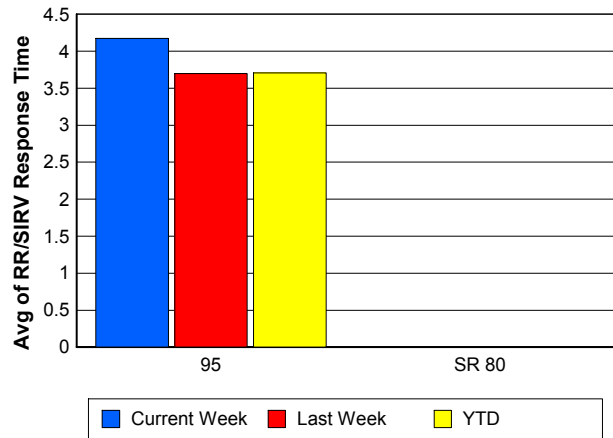
TMC Response Time



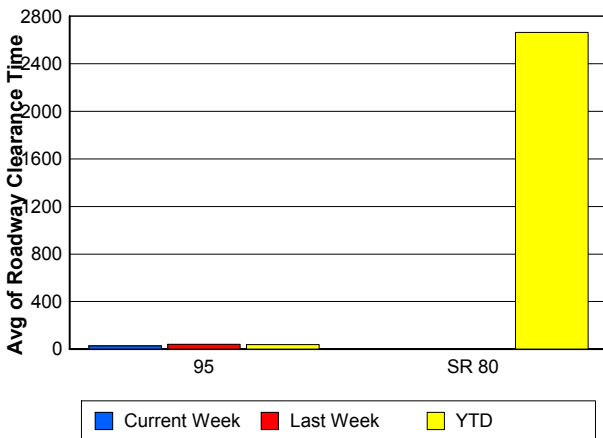
Road Ranger / SIRV Dispatch Time



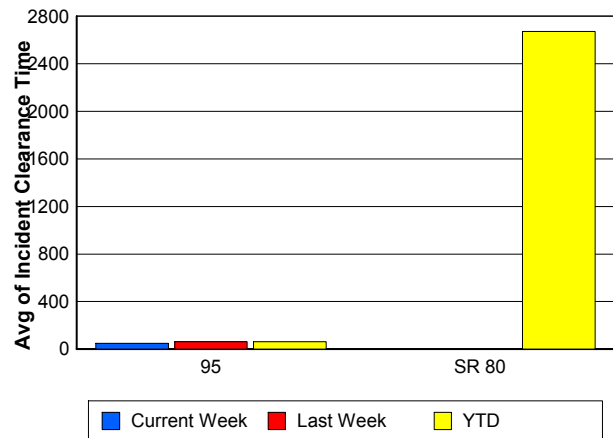
Road Ranger / SIRV Response Time



Roadway Clearance Time (2A)



Incident Clearance Time (3B)



Performance Measures by Event Type

Accident

	<u>Current Week</u>	<u>Last Week</u>	<u>YTD</u>
Number of Events	18	27	640
Number of Incidents	10	12	305
TMC Detection (min.)	0.00	0.00	0.01
TMC Verification (min.)	3.32	1.65	3.62
TMC Response (min.)	6.81	13.80	7.80
RR Dispatch Time (min.)	1.39	9.78	2.95
RR Response Time (min.)	5.42	3.59	4.85
Event Clearance (min.)	56.99	50.85	58.03
Roadway Clearance (min.)	34.31	53.59	45.02
Incident Clearance (min.)	62.51	77.64	72.35
# of Events w/ RR/SIRV	10	19	496
RR/SIRV Assists	10	19	496
RR/SIRV Activities	15	20	642

Debris on Roadway

	<u>Current Week</u>	<u>Last Week</u>	<u>YTD</u>
Number of Events	17	37	515
Number of Incidents	0	2	22
TMC Detection (min.)	0.00	0.00	0.00
TMC Verification (min.)	7.23	8.40	8.41
TMC Response (min.)	7.30	8.85	8.81
RR Dispatch Time (min.)	1.87	1.45	1.81
RR Response Time (min.)	5.42	7.39	7.00
Event Clearance (min.)	10.02	13.07	12.47
Roadway Clearance (min.)		15.20	14.62
Incident Clearance (min.)		15.03	18.42
# of Events w/ RR/SIRV	16	35	506
RR/SIRV Assists	16	35	506
RR/SIRV Activities	16	37	544

Disabled Vehicle

	<u>Current Week</u>	<u>Last Week</u>	<u>YTD</u>
Number of Events	246	244	5,087
Number of Incidents	4	2	98
TMC Detection (min.)	0.00	0.00	0.00
TMC Verification (min.)	3.94	3.54	3.33
TMC Response (min.)	5.61	4.70	4.51
RR Dispatch Time (min.)	1.50	1.82	1.43
RR Response Time (min.)	4.12	2.88	3.13
Event Clearance (min.)	19.26	18.04	17.98
Roadway Clearance (min.)	11.22	8.12	20.70
Incident Clearance (min.)	11.92	14.40	30.87
# of Events w/ RR/SIRV	226	227	4,644
RR/SIRV Assists	226	227	4,644
RR/SIRV Activities	243	248	5,092

Emergency Vehicles

	<u>YTD</u>
Number of Events	10
Number of Incidents	4
TMC Detection (min.)	0.00
TMC Verification (min.)	1.38
TMC Response (min.)	9.08
RR Dispatch Time (min.)	4.65
RR Response Time (min.)	4.43
Event Clearance (min.)	42.39
Roadway Clearance (min.)	30.30
Incident Clearance (min.)	35.06
# of Events w/ RR/SIRV	4
RR/SIRV Assists	4
RR/SIRV Activities	6

Other

	<u>Current Week</u>	<u>Last Week</u>	<u>YTD</u>
Number of Events	12	22	557
Number of Incidents	0	0	6
TMC Detection (min.)	0.00	0.00	0.00
TMC Verification (min.)	0.29	0.48	1.21
TMC Response (min.)	1.15	27.95	21.13
RR Dispatch Time (min.)	0.37	11.77	10.96
RR Response Time (min.)	0.78	14.06	8.28
Event Clearance (min.)	88.15	38.59	39.31
Roadway Clearance (min.)			38.11
Incident Clearance (min.)			52.15
# of Events w/ RR/SIRV	3	6	123
RR/SIRV Assists	3	6	123
RR/SIRV Activities	3	6	108

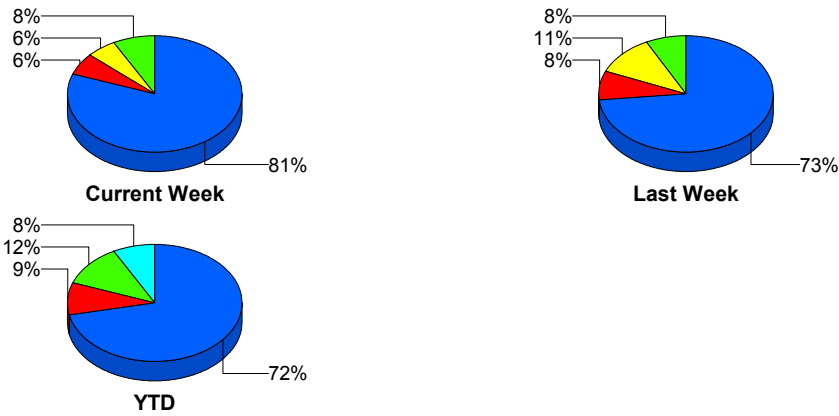
Police Activity

	<u>Current Week</u>	<u>Last Week</u>	<u>YTD</u>
Number of Events	11	2	289
Number of Incidents	0	0	24
TMC Detection (min.)	0.00	0.00	0.02
TMC Verification (min.)	0.00	0.00	0.17
TMC Response (min.)	0.00		9.89
RR Dispatch Time (min.)	0.00		6.36
RR Response Time (min.)	0.00		3.54
Event Clearance (min.)	20.03	6.95	24.52
Roadway Clearance (min.)			65.70
Incident Clearance (min.)			101.73
# of Events w/ RR/SIRV	1	0	23
RR/SIRV Assists	1	0	23
RR/SIRV Activities	1	0	26

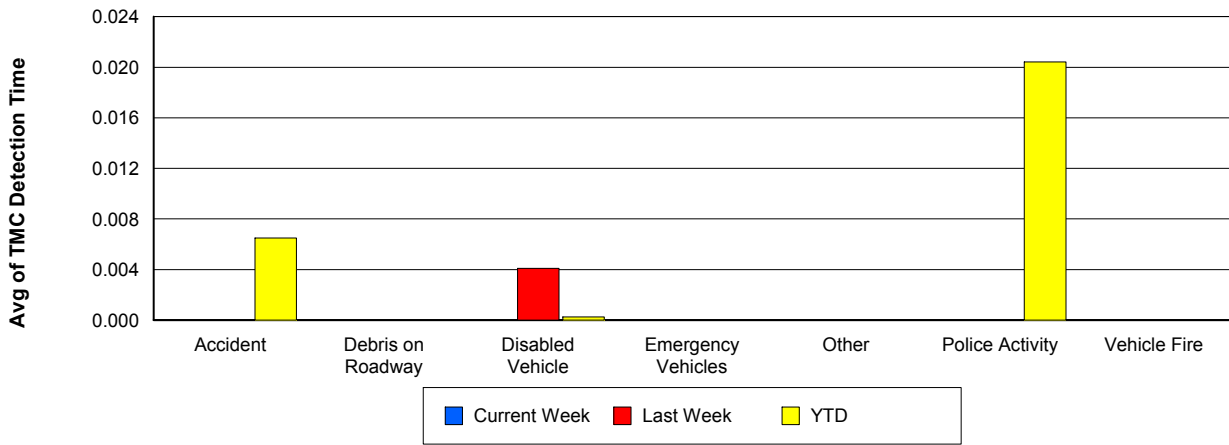
Vehicle Fire

	<u>Current Week</u>	<u>Last Week</u>	<u>YTD</u>
Number of Events	1	1	13
Number of Incidents	1	1	9
TMC Detection (min.)	0.00	0.00	0.00
TMC Verification (min.)	0.00	2.18	2.17
TMC Response (min.)	0.00	6.27	6.25
RR Dispatch Time (min.)	0.00	0.97	1.02
RR Response Time (min.)	0.00	5.30	5.22
Event Clearance (min.)	53.37	51.82	68.17
Roadway Clearance (min.)	33.82	13.12	35.69
Incident Clearance (min.)	53.37	51.82	72.78
# of Events w/ RR/SIRV	1	1	7
RR/SIRV Assists	1	1	7
RR/SIRV Activities	1	1	9

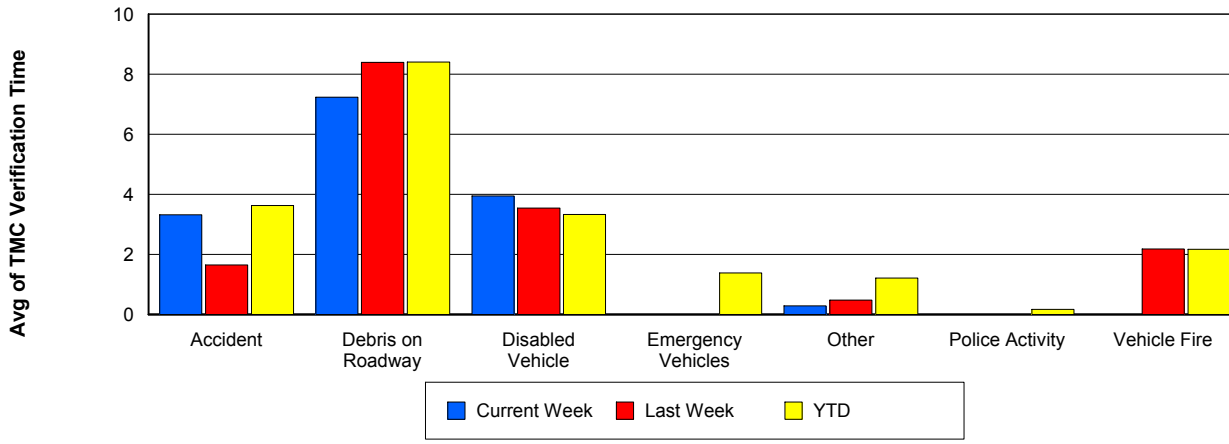
Number of Events / Event Type



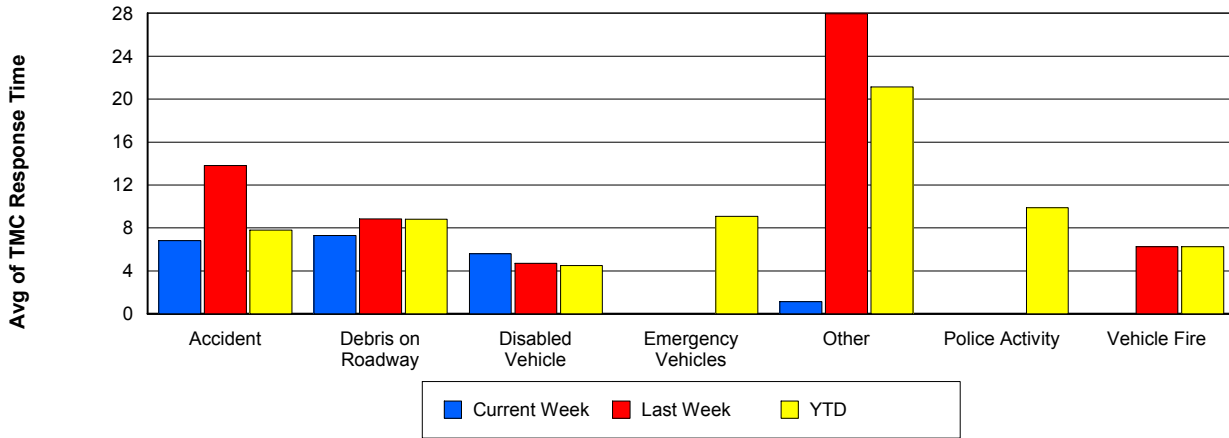
TMC Detection Time



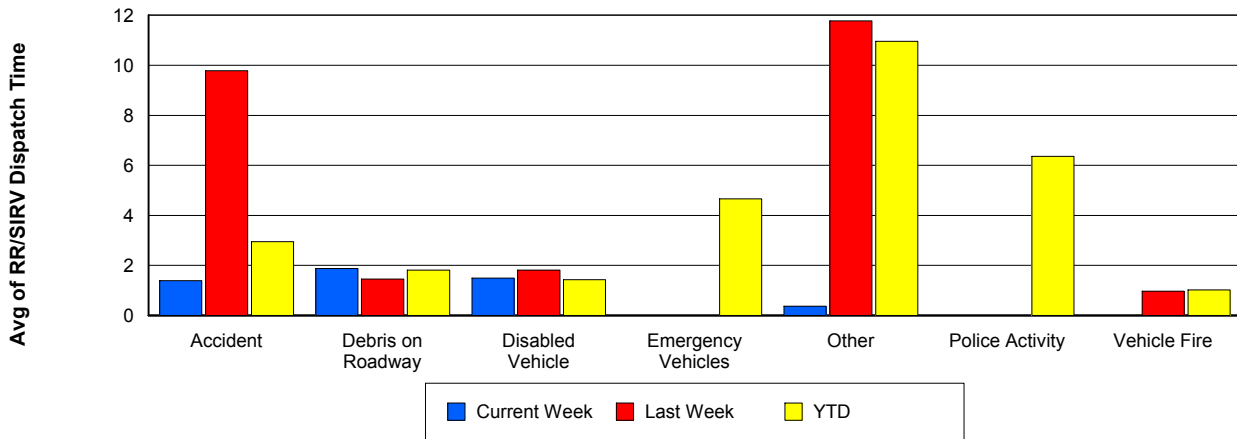
TMC Verification Time



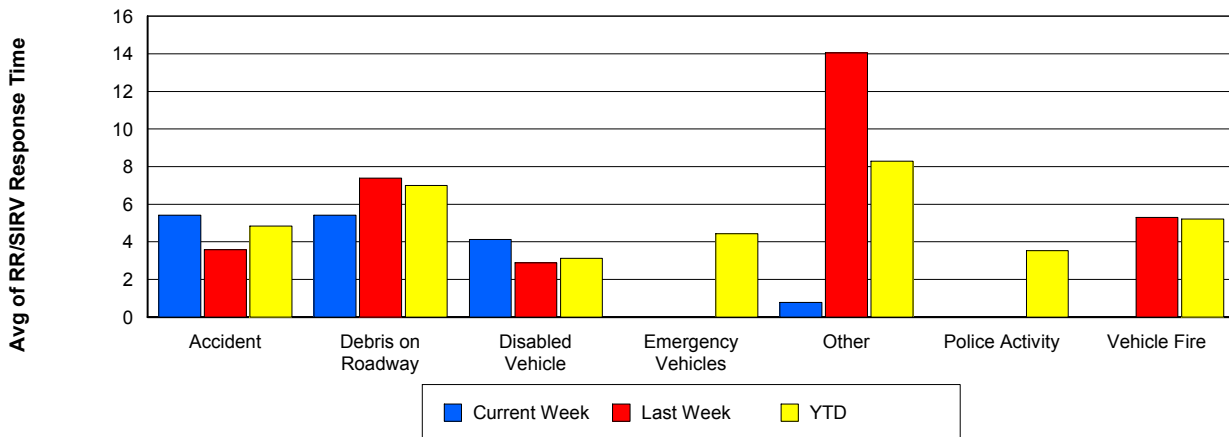
TMC Response Time



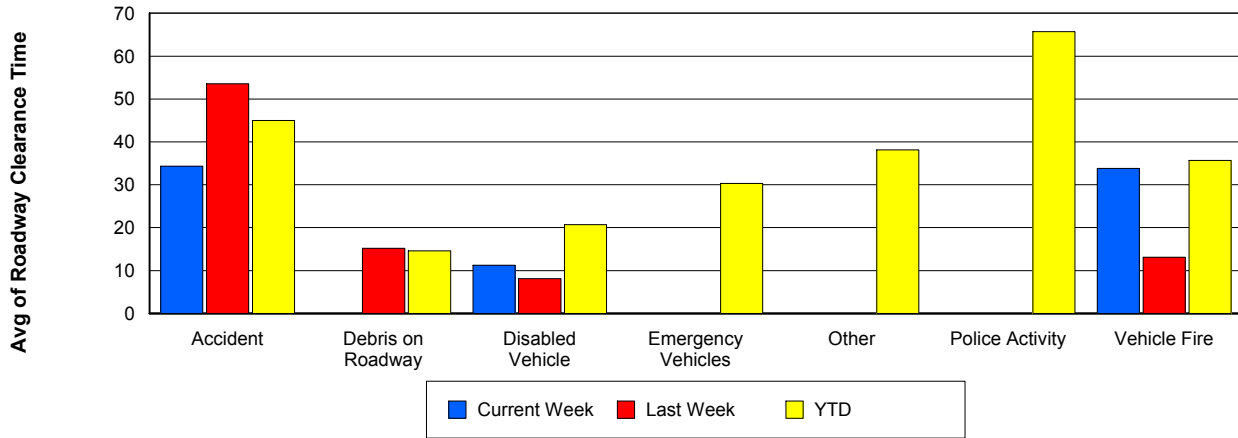
Road Ranger / SIRV Dispatch Time



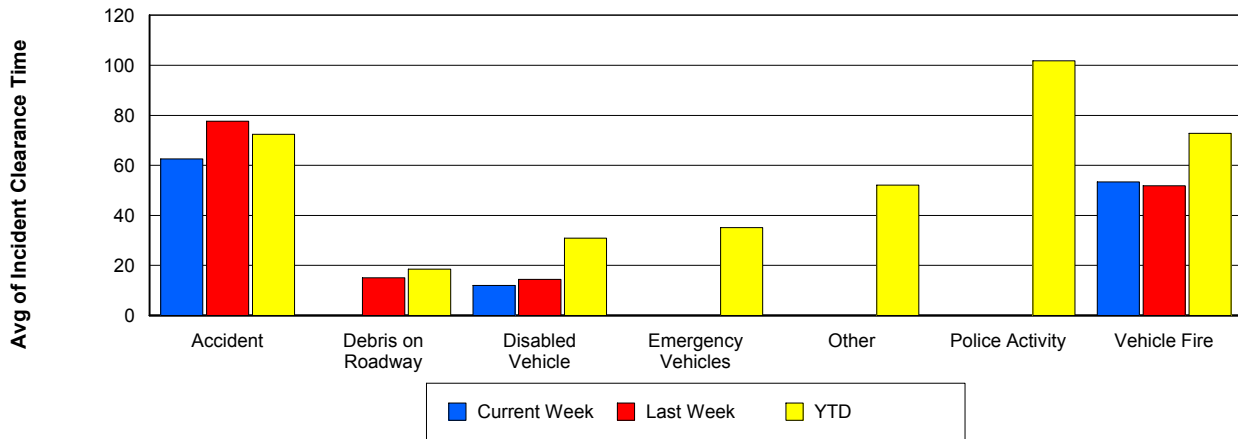
Road Ranger / SIRV Response Time



Roadway Clearance Time (2A)



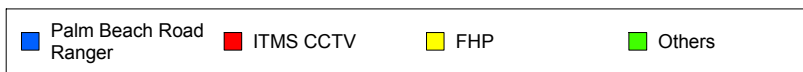
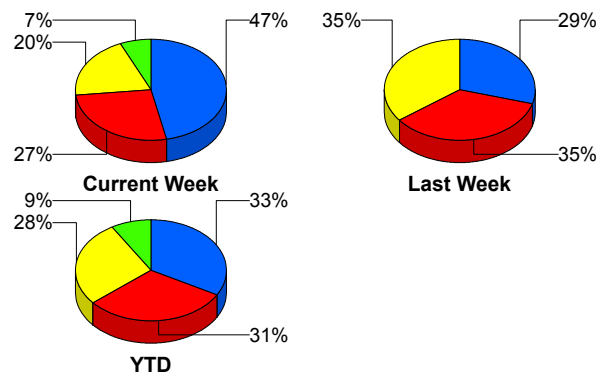
Incident Clearance Time (3B)



Incident Detection Methods

	Current Week	Last Week	YTD
Broward CCTV	0	0	5
Broward Road Ranger	0	0	5
District 4	0	0	9
Emergency Operations	0	0	1
FHP	3	6	129
I-95 Construction PIO	0	0	2
ITMS	1	0	4
ITMS CCTV	4	6	144
Local Police	0	0	1
Motorist	0	0	9
Palm Beach Road Ran	7	5	155
Road Watcher	0	0	1
SmarTraveler (511)	0	0	4
Total	15	17	469

Total Incidents by Detection Method

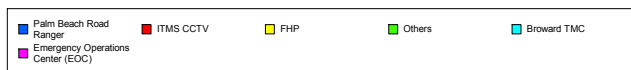
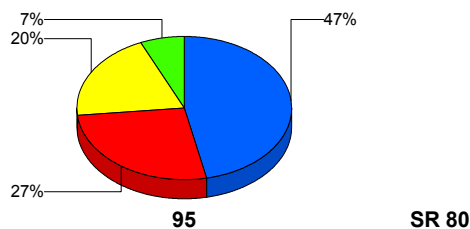


Incident Detection Methods by Roadway

		Current Week	Last Week	YTD
95	Broward CCTV	0	0	5
	Broward Road Ranger	0	0	5
	District 4	0	0	9
	FHP	3	6	128
	I-95 Construction PIO	0	0	2
	ITMS	1	0	4
	ITMS CCTV	4	6	144
	Local Police	0	0	1
	Motorist	0	0	9
	Palm Beach Road Ran	7	5	155
	Road Watcher	0	0	1
	SmarTraveler (511)	0	0	4
	Total	15	17	467

Total Events by Roadway and Detection Method

Current Period Only

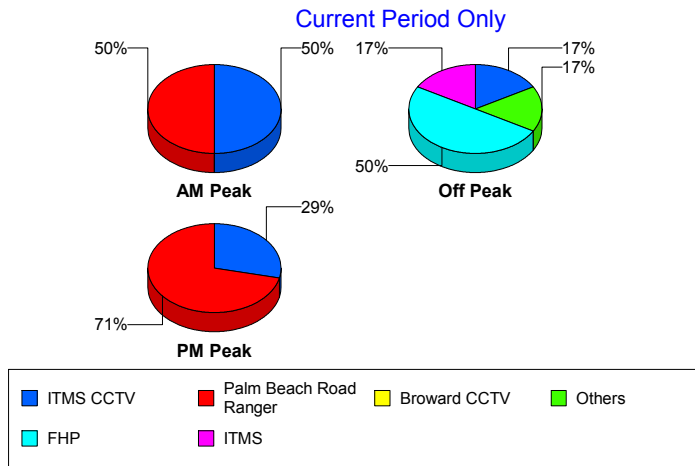


		Current Week	Last Week	YTD
SR 80	Emergency Operations	0	0	1
	FHP	0	0	1
	Total	0	0	2
Total		15	17	469

Incident Detection Methods by Peak Period

		Current Week	Last Week	YTD
AM Peak	Broward CCTV	0	0	1
	Broward Road Ranger	0	0	3
	District 4	0	0	6
	FHP	0	2	48
	ITMS	0	0	2
	ITMS CCTV	1	1	22
	Motorist	0	0	4
	Palm Beach Road Ran	1	2	54
	Road Watcher	0	0	1
	SmarTraveler (511)	0	0	3
	Total	2	5	144
	Off Peak	Broward CCTV	0	0
Broward Road Ranger		0	0	1
District 4		0	0	3
FHP		3	3	56
I-95 Construction PIO		0	0	2
ITMS		1	0	2
ITMS CCTV		1	5	69
Motorist		0	0	2
Palm Beach Road Ran		1	1	54
SmarTraveler (511)		0	0	1
Total		6	9	194
PM Peak		Broward Road Ranger	0	0
	Emergency Operations	0	0	1
	FHP	0	1	25

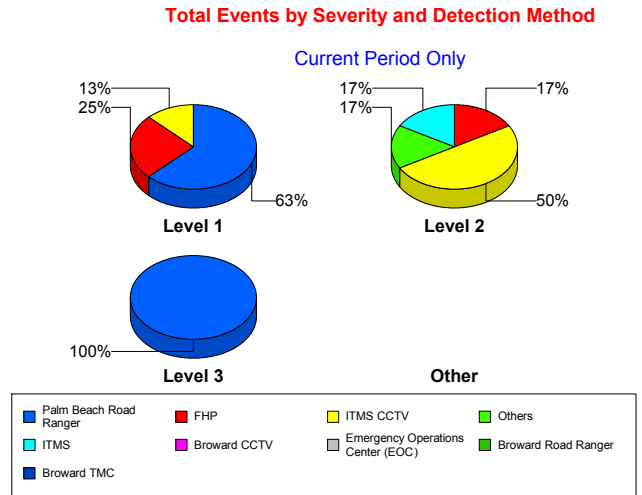
Total Events by Peak Period and Detection Method



		Current Week	Last Week	YTD
PM Peak	ITMS CCTV	2	0	53
	Local Police	0	0	1
	Motorist	0	0	3
	Palm Beach Road Ran	5	2	47
	Total	7	3	131
Total		15	17	469

Incident Detection Methods by Severity

		Current Week	Last Week	YTD
Level 1	Broward CCTV	0	0	3
	Broward Road Ranger	0	0	3
	District 4	0	0	7
	FHP	2	5	59
	I-95 Construction PIO	0	0	1
	ITMS	0	0	1
	ITMS CCTV	1	2	60
	Local Police	0	0	1
	Motorist	0	0	6
	Palm Beach Road Ran	5	4	112
	Road Watcher	0	0	1
	SmarTraveler (511)	0	0	1
	Total	8	11	255
	Level 2	Broward Road Ranger	0	0
District 4		0	0	2
FHP		1	1	53
I-95 Construction PIO		0	0	1
ITMS		1	0	3
ITMS CCTV		3	3	61
Motorist		0	0	2
Palm Beach Road Ran		1	0	34
SmarTraveler (511)		0	0	3
Total		6	4	161



		Current Week	Last Week	YTD
Level 3	Broward CCTV	0	0	2
	Emergency Operations	0	0	1
	FHP	0	0	17
	ITMS CCTV	0	1	23
	Motorist	0	0	1
	Palm Beach Road Ran	1	1	9
	Total	1	2	53
Total		15	17	469

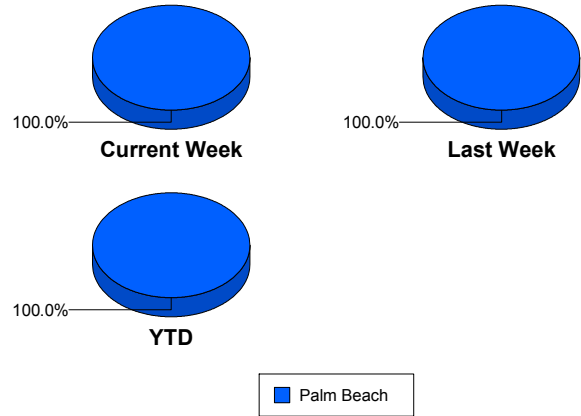
Road Ranger / SIRV Performance Measures

Road Ranger / SIRV Performance By County

Values presented are:
 - Total Events with a RR/SIRV Response
 - Total RR/SIRV Responses,
 - Total Activities Performed

	Current We	Last Week	YTD
Palm Beach	330	375	7,601
	335	382	7,845
	359	407	8,375

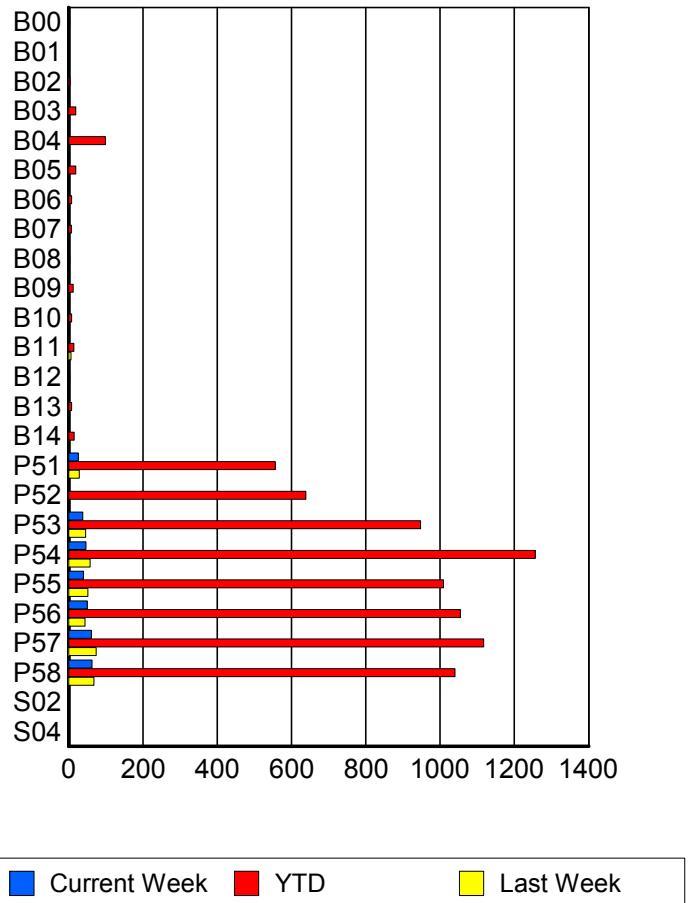
RR/SIRV Responses per County



Road Ranger / SIRV Performance By Truck

	Current We	Last Week	YTD
B00	1	0	3
	1	0	3
	1	0	3
B01	0	0	1
	0	0	1
	0	0	1
B02	1	0	4
	1	0	4
	1	0	4
B03	2	0	19
	2	0	19
	2	0	20
B04	2	1	98
	2	1	99
	2	1	114
B05	0	2	18
	0	2	19
	0	2	20
B06	2	1	8
	2	1	8
	2	1	8
B07	0	0	7
	0	0	7
	0	0	7
B08	0	0	3
	0	0	3
	0	0	3

RR/SIRV Responses per Truck



	Current We	Last Week	YTD
B09	2	0	12
	2	0	12
	2	0	12
B10	0	0	8
	0	0	8
	0	0	8
B11	0	6	14
	0	6	14
	0	6	15
B12	0	1	3
	0	1	3
	0	1	3
B13	0	0	8
	0	0	8
	0	0	9
B14	0	0	15
	0	0	15
	0	0	16
P51	26	28	551
	26	29	556
	27	30	582
P52	0	0	635
	0	0	639
	0	0	679
P53	37	45	935
	38	46	947
	41	46	1,011
P54	47	58	1,246
	47	58	1,256
	51	64	1,345
P55	40	52	1,000
	40	52	1,009
	41	60	1,073
P56	50	44	1,043
	50	44	1,055
	56	46	1,139
P57	61	73	1,110
	61	74	1,117
	66	79	1,201
P58	62	68	1,027
	63	68	1,040
	67	71	1,099
S02	0	0	1
	0	0	1
	0	0	1

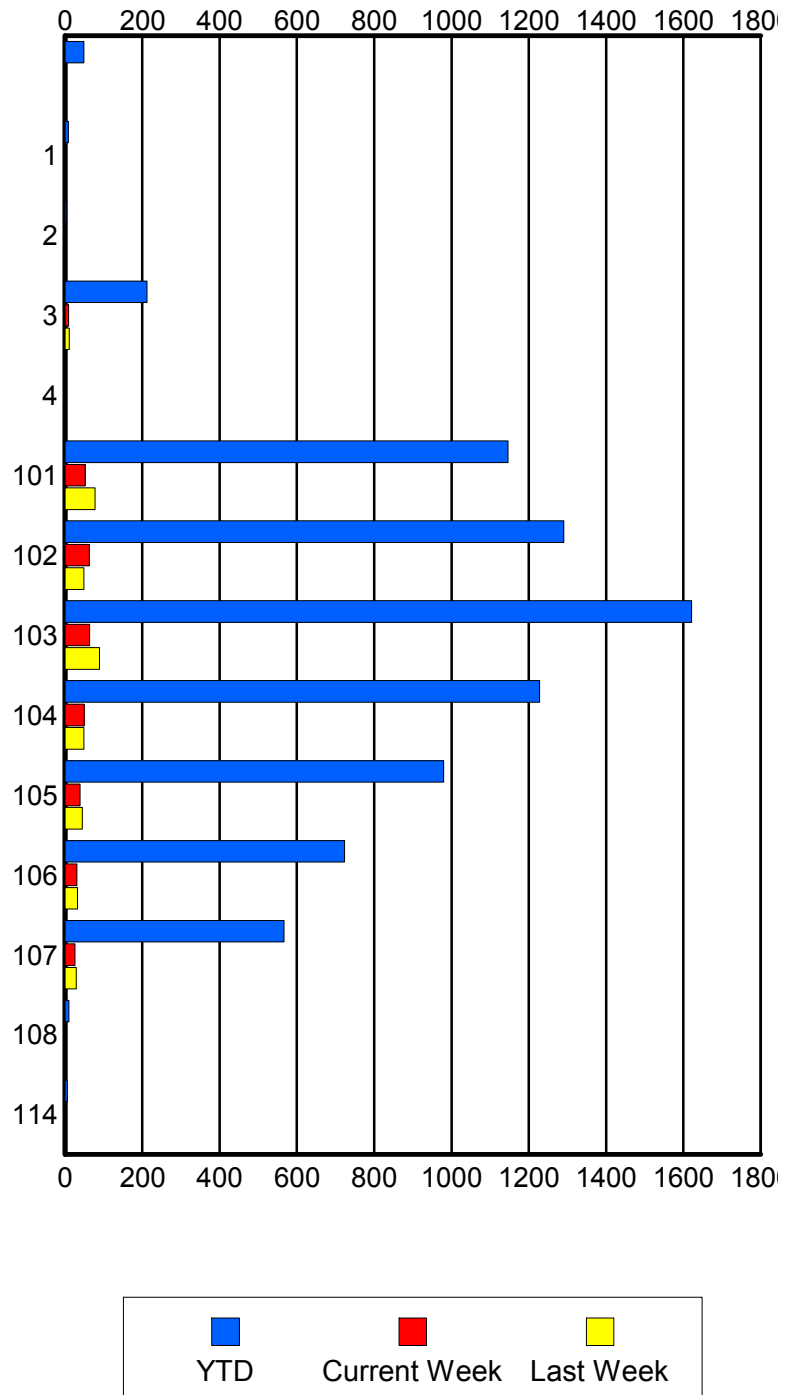
	Current We	Last Week	YTD
S04	0	0	2
	0	0	2
	0	0	2

Road Ranger / SIRV Performance By Beat

	Current We	Last Week	YTD
	0	0	49
	0	0	49
	0	0	49
1	1	0	8
	1	0	8
	1	0	9
2	0	0	3
	0	0	3
	0	0	4
3	9	11	210
	9	11	212
	9	11	230
4	0	0	1
	0	0	1
	0	0	1
101	51	76	1,132
	52	78	1,146
	57	85	1,234
102	62	49	1,277
	63	49	1,291
	67	51	1,368
103	64	87	1,602
	64	89	1,621
	71	97	1,744
104	50	49	1,220
	50	49	1,228
	51	52	1,317
105	39	45	972
	39	45	980
	40	48	1,040
106	31	32	715
	31	32	723
	36	33	773
107	26	28	562
	26	29	567
	27	30	590
108	0	0	9
	0	0	10
	0	0	10
114	0	0	6
	0	0	6
	0	0	6

Values presented are:
 - Total Events with a RR/SIRV Response
 - Total RR/SIRV Responses,
 - Total Activities Performed

RR/SIRV Responses per Beat

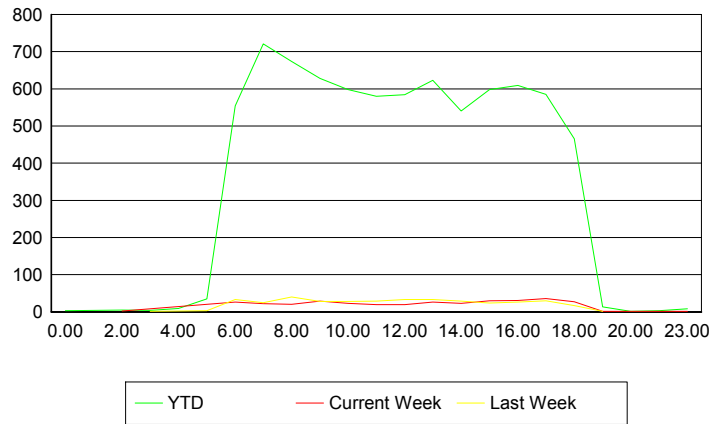


Road Ranger / SIRV Performance By Time of Day

Values presented are:
 - Total Events with a RR/SIRV Response
 - Total RR/SIRV Responses,
 - Total Activities Performed

	Current We	Last Week	YTD
12AM-1AM	0 0 0	0 0 0	3 3 3
1AM-2AM	0 0 0	0 0 0	4 4 4
2AM-3AM	2 2 3	0 0 0	5 5 6
3AM-4AM	0 0 0	1 1 1	4 4 4
4AM-5AM	0 0 0	2 2 2	6 9 10
5AM-6AM	0 0 0	3 3 3	33 35 35
6AM-7AM	26 26 28	32 33 35	531 554 583
7AM-8AM	20 22 24	25 25 25	692 721 771
8AM-9AM	20 20 21	40 40 43	650 674 726
9AM-10AM	27 29 30	28 28 29	608 628 686
10AM-11AM	23 23 24	28 28 29	580 598 630
11AM-12PM	19 19 20	28 29 32	563 580 630
12PM-1PM	19 19 22	32 33 33	566 584 624

Number of Responses / Hour of the Day



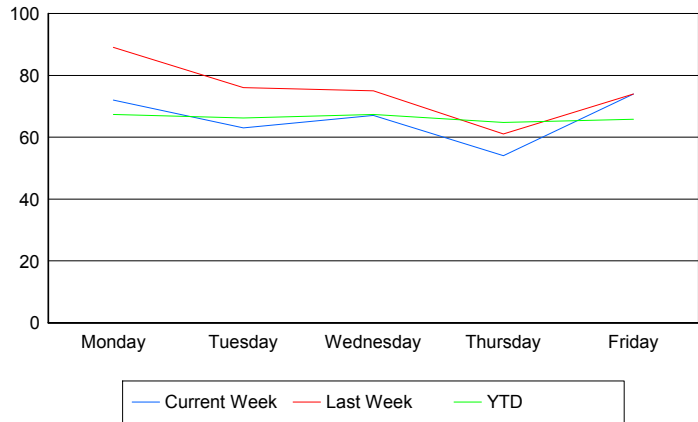
	Current We	Last Week	YTD
1PM-2PM	26	33	610
	26	33	623
	30	36	677
2PM-3PM	23	27	521
	23	29	540
	25	33	572
3PM-4PM	30	23	579
	30	24	598
	33	28	640
4PM-5PM	31	26	591
	31	26	609
	32	27	637
5PM-6PM	35	29	569
	36	30	585
	36	31	616
6PM-7PM	27	17	462
	27	17	466
	29	19	495
7PM-8PM	1	1	13
	1	1	13
	1	1	14
8PM-9PM	0	0	1
	0	0	1
	0	0	1
10PM-11PM	0	0	3
	0	0	3
	0	0	3
11PM-12AM	1	0	7
	1	0	8
	1	0	8

Road Ranger / SIRV Performance By Day of Week

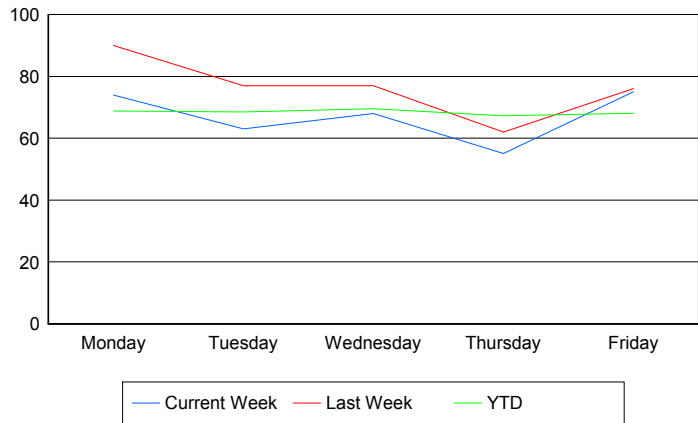
Values presented are:
 - Total Events with a RR/SIRV Response
 - Total RR/SIRV Responses,
 - Total Activities Performed

	Current We	Last Week	YTD
Monday	72	89	1,510
	74	90	1,542
	75	95	1,631
Tuesday	63	76	1,496
	63	77	1,546
	65	80	1,645
Wednesday	67	75	1,530
	68	77	1,578
	76	85	1,699
Thursday	54	61	1,518
	55	62	1,578
	61	64	1,692
Friday	74	74	1,549
	75	76	1,601
	82	83	1,708

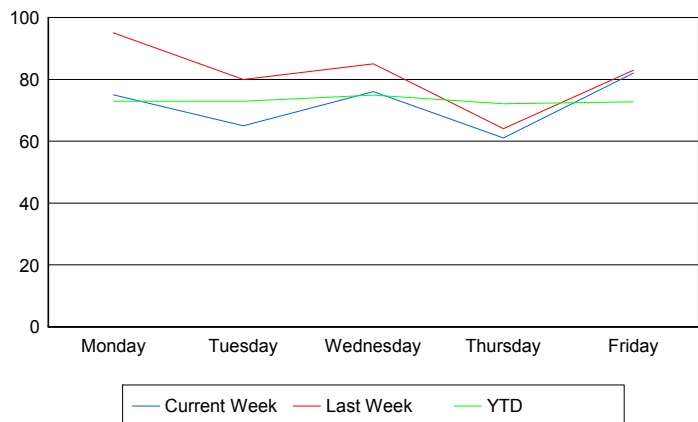
Avg # of events with a RR/SIRV Response per Day of the Week



Avg # of RR/SIRV Responses per Day of the Week



Avg # of RR/SIRV Activities Performed per Day of the Week



Road Ranger / SIRV Responses per Time of Day and Day of Week

