



Weekly Performance Measures Report Palm Beach County



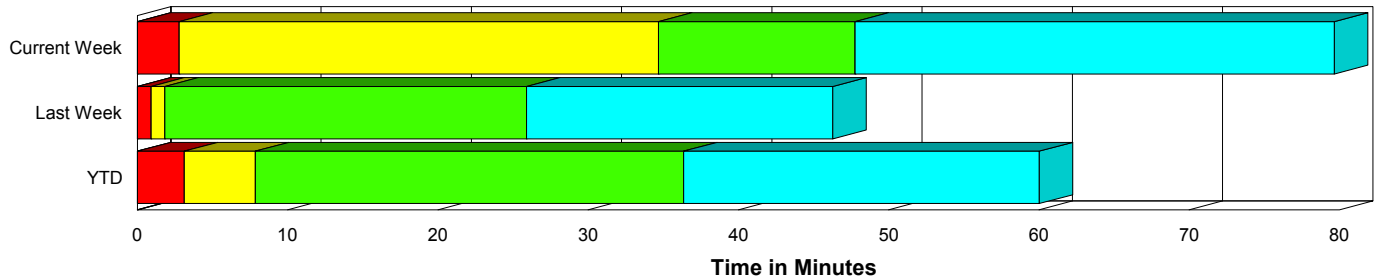
Created on:
June 22, 2009
8:44 am

Period From Jun 14, 2009 to Jun 20, 2009

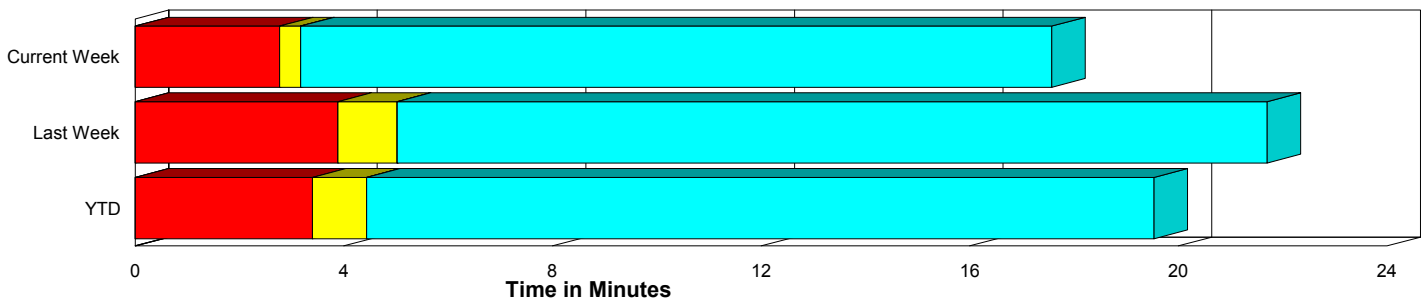
Performance Measures Summary

	Traffic Events (No Lanes Blocked)			Incidents (Lanes Blocked)		
	<u>This Week</u>	<u>Last Week</u>	<u>YTD</u>	<u>This Week</u>	<u>Last Week</u>	<u>YTD</u>
Number of Events	293	293	6,983	17	15	486
TMC Detection (min.)	0.00	0.00	0.00	0.00	0.00	0.02
TMC Verification (min.)	2.77	3.89	3.40	2.80	0.91	3.10
TMC Response (min.)	3.50	5.79	5.26	35.54	2.21	8.61
RR Dispatch Time (min.)	1.21	1.50	1.68	26.28	1.08	4.32
RR Response Time (min.)	2.33	4.30	3.61	7.30	1.13	4.28
Roadway Clearance (min.)				43.64	28.12	50.13
Event Clearance (min.)	17.91	22.47	20.35	75.48	48.41	73.31
# of Events w/ RR/SIRV	264	248	5,742	14	10	375
RR/SIRV Responses	264	248	5,742	14	10	375
RR/SIRV Activities	286	265	6,220	19	15	549

Incident Clearance Time-Line



Traffic Event (Non-Lane Blockage) Time-Line



■ Avg. TMC Detection Time	■ Avg. Time from TMC Response to Roadway Clearance*
■ Avg. Time from TMC Detection to TMC Verification	■ Avg. Time from Roadway Clearance to Incident/Event Clearance**
■ Avg. Time from TMC Verification to TMC Response	

* Roadway clearance equals all travel lanes open

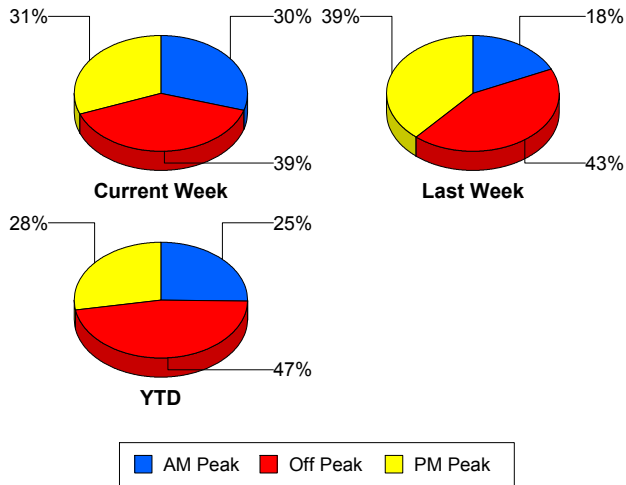
** Incident clearance equals time when last responder has left the scene

Performance Measures by Peak Period

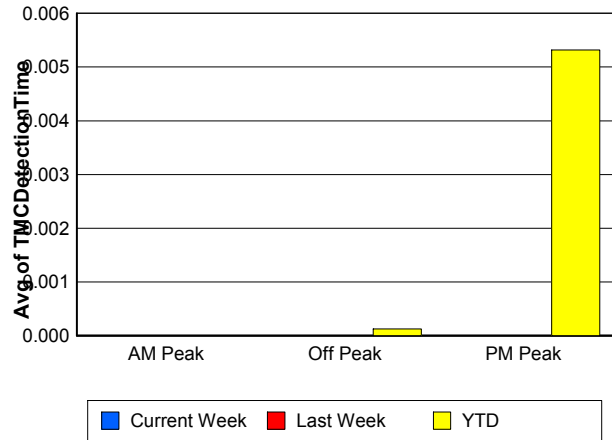
Note: AM peak period is defined as 6am to 10am and PM peak period is defined as 3pm to 7pm.

	AM Peak			Off Peak			PM Peak		
	<u>Current Week</u>	<u>Last Week</u>	<u>YTD</u>	<u>Current Week</u>	<u>Last Week</u>	<u>YTD</u>	<u>Current Week</u>	<u>Last Week</u>	<u>YTD</u>
Number of Events	92	56	1,886	122	133	3,504	96	119	2,079
Number of Incidents	6	2	150	8	6	202	3	7	134
TMC Detection (min.)	0.00	0.00	0.00	0.00	0.00	0.00	0.00	0.00	0.01
TMC Verification (min.)	2.22	1.30	3.13	2.59	2.65	2.91	3.54	6.16	4.40
TMC Response (min.)	2.72	1.72	4.24	8.32	6.30	6.56	3.91	7.07	5.24
RR Dispatch Time (min.)	0.70	0.43	1.06	5.12	3.00	2.89	1.57	0.73	1.26
RR Response Time (min.)	2.13	1.29	3.23	3.20	3.28	3.69	2.35	6.40	3.99
Event Clearance (min.)	21.86	22.66	22.02	24.18	28.32	26.02	16.34	19.12	21.67
Roadway Clearance (min.)	21.42	71.11	38.28	65.29	28.19	45.77	30.34	15.78	69.97
Incident Clearance (min.)	61.19	107.06	62.74	93.83	40.93	71.29	55.13	38.07	88.17
# of Events w/ RR/SIRV	91	54	1,793	93	93	2,387	94	111	1,937
RR/SIRV Responses	91	54	1,793	93	93	2,387	94	111	1,937
RR/SIRV Activities	101	63	2,037	105	103	2,635	99	114	2,097

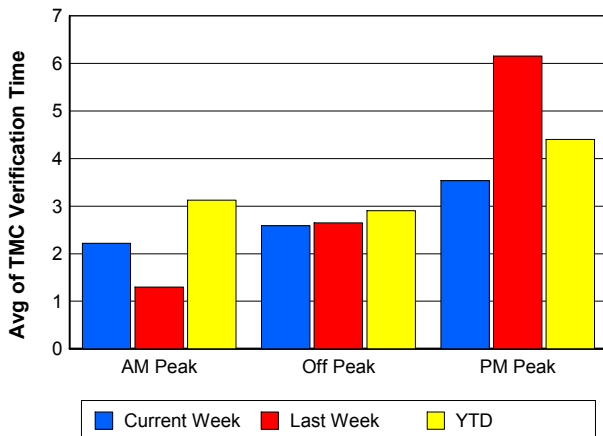
Number of Events / Peak Period



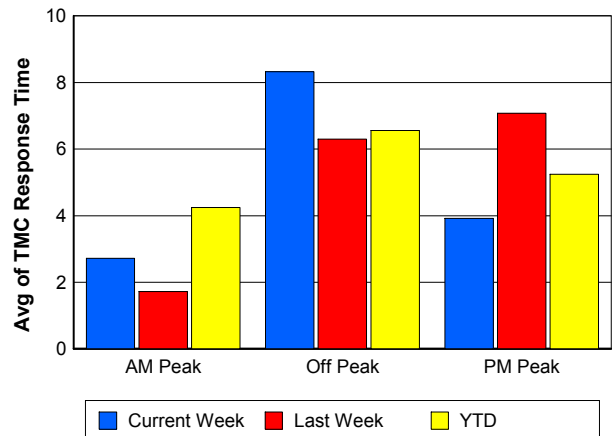
TMC Detection Time



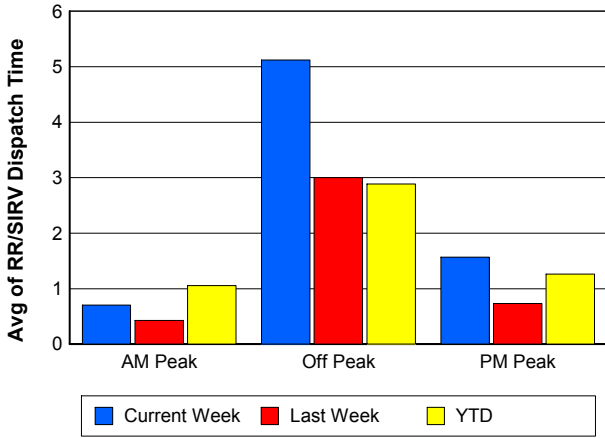
TMC Verification Time



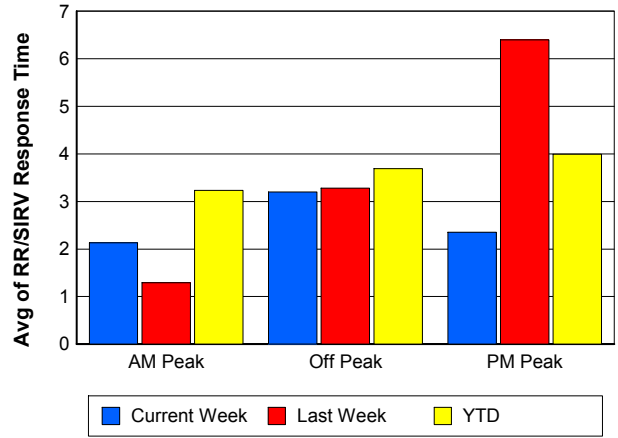
TMC Response Time



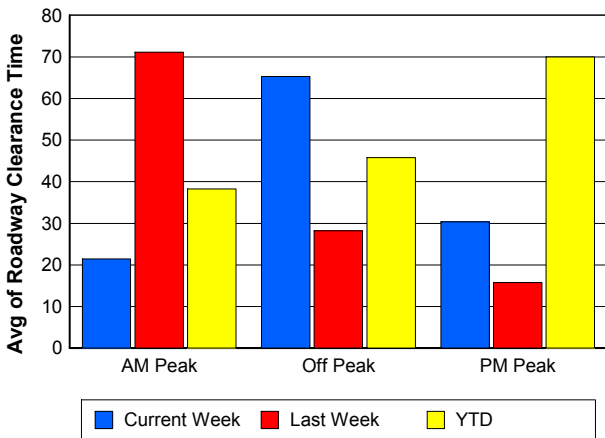
Road Ranger / SIRV Dispatch Time



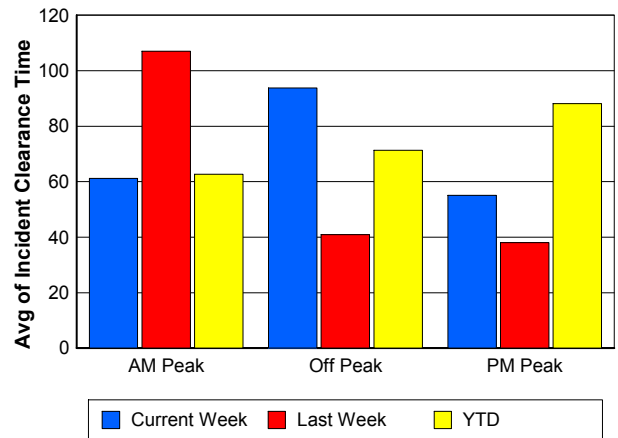
Road Ranger / SIRV Response Time



Roadway Clearance Time (2A)



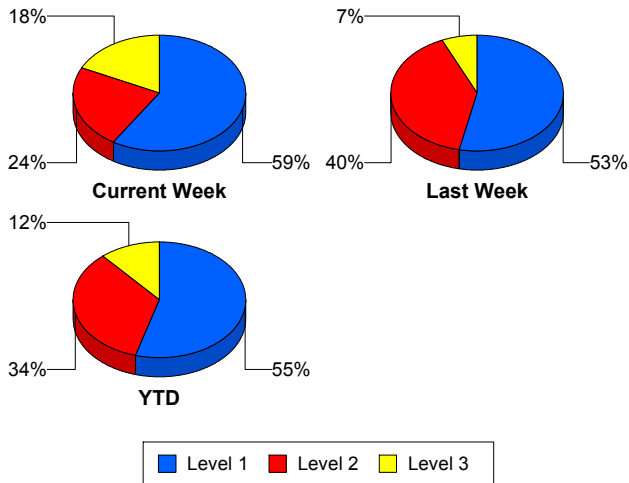
Incident Clearance Time (3B)



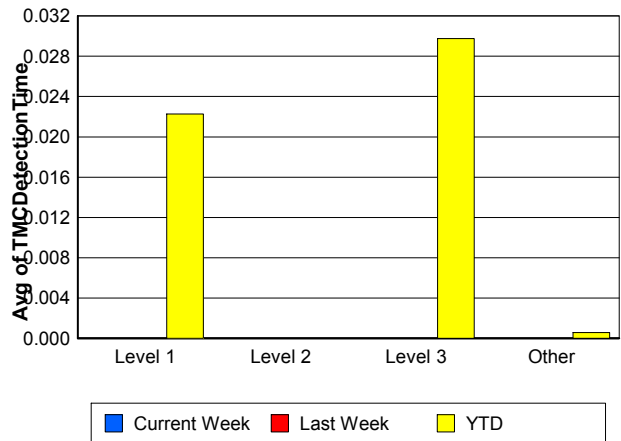
Performance Measures by Severity

	Level 1			Level 2			Level 3			Other		
	<u>This Week</u>	<u>Last Week</u>	<u>YTD</u>	<u>This Week</u>	<u>Last Week</u>	<u>YTD</u>	<u>This Week</u>	<u>Last Week</u>	<u>YTD</u>	<u>This Week</u>	<u>Last Week</u>	<u>YTD</u>
Number of Events	10	8	265	4	6	165	3	1	56	293	293	6,983
Number of Incidents	10	8	265	4	6	165	3	1	56	0	0	0
TMC Detection (min.)	0.00	0.00	0.02	0.00	0.00	0.00	0.00	0.00	0.03	0.00	0.00	0.00
TMC Verification (min.)	1.83	1.62	2.37	3.52	0.11	3.72	5.07	0.00	4.78	2.77	3.89	3.40
TMC Response (min.)	5.04	1.85	4.21	7.66	4.59	8.57	199.37	0.00	33.81	3.50	5.79	5.26
RR Dispatch Time (min.)	1.34	0.25	1.06	0.63	4.53	2.98	176.96	0.00	26.90	1.21	1.50	1.68
RR Resp. Time (min.)	3.63	1.60	3.17	7.03	0.06	5.58	22.41	0.00	6.91	2.33	4.30	3.61
Event Clearance (min.)	40.40	30.18	39.66	84.27	71.89	75.90	180.71	53.37	224.91	17.91	22.47	20.35
Roadway Clear. (min.)	15.67	11.75	14.54	47.28	49.01	53.48	132.02	33.82	208.70			
Incident Clearance (min.)	40.40	30.18	39.66	84.27	71.89	75.90	180.71	53.37	224.91			
# of Events w/ RR/SIRV	9	7	225	3	2	111	2	1	39	264	248	5,742
RR/SIRV Responses	9	7	225	3	2	111	2	1	39	264	248	5,742
RR/SIRV Activities	11	8	294	5	6	188	3	1	67	286	265	6,220

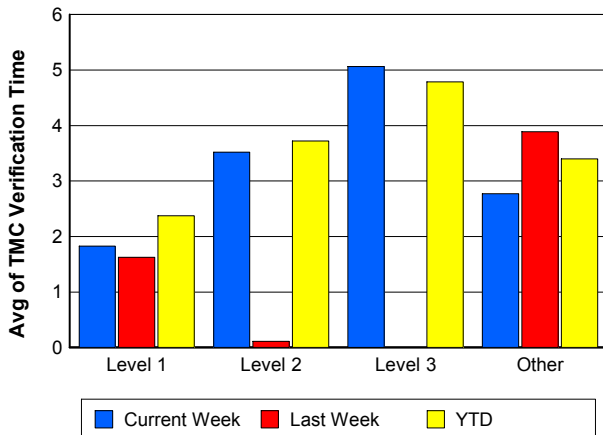
Number of Events / Severity



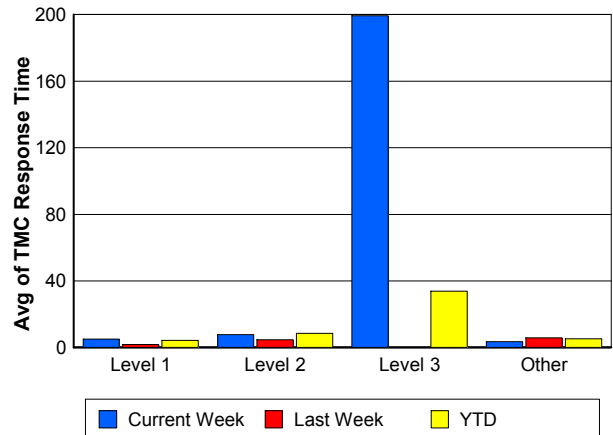
TMC Detection Time



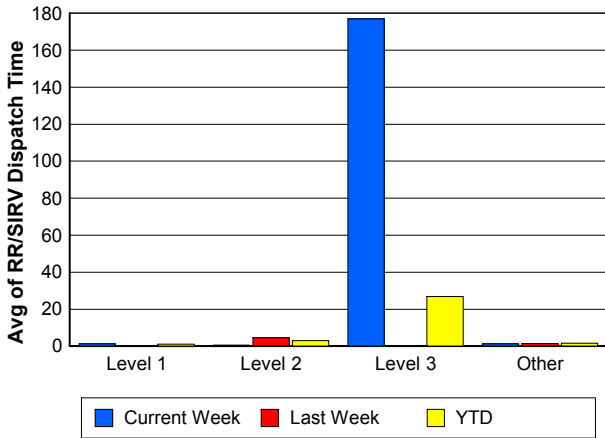
TMC Verification Time



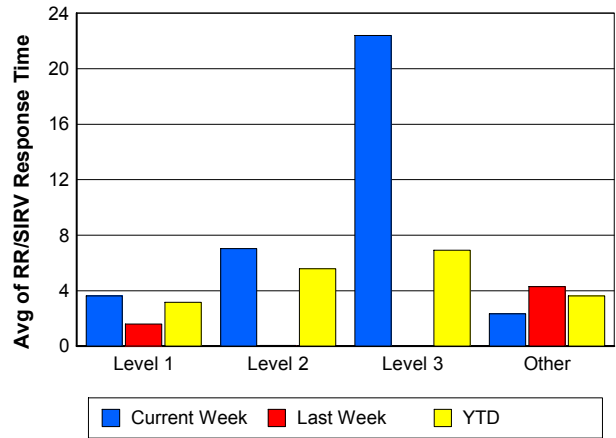
TMC Response Time



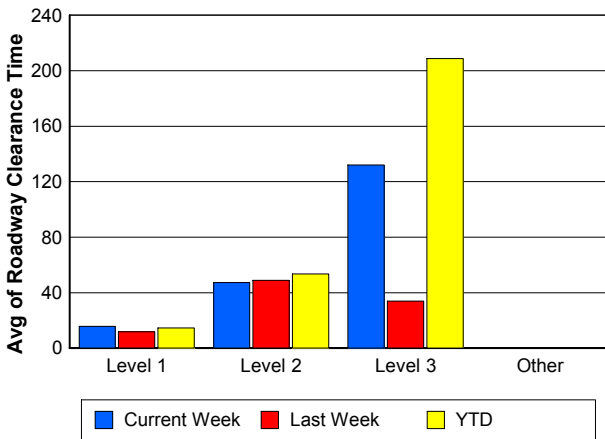
Road Ranger / SIRV Dispatch Time



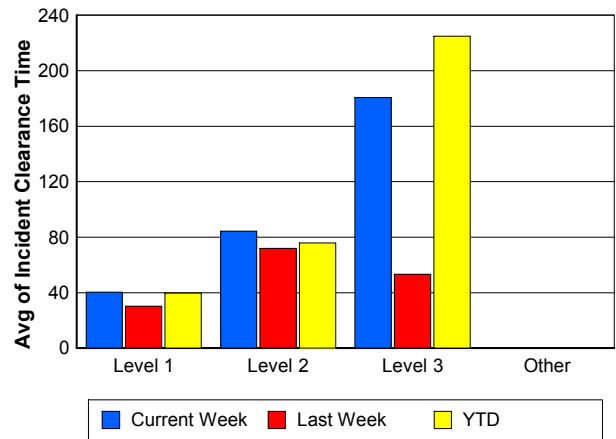
Road Ranger / SIRV Response Time



Roadway Clearance Time (2A)



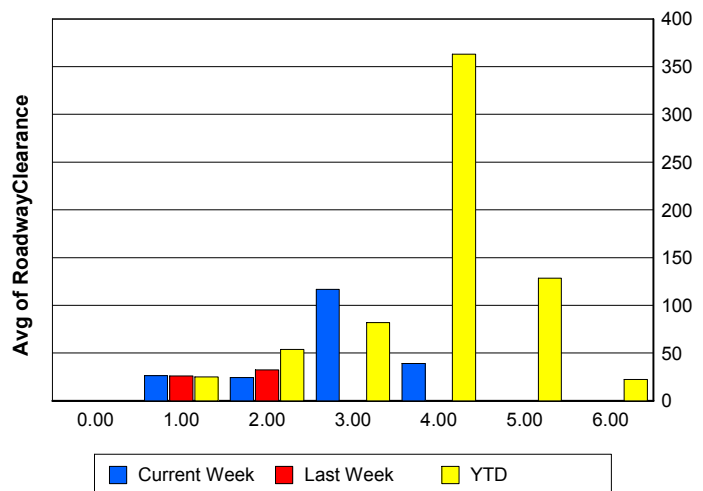
Incident Clearance Time (3B)



Roadway Clearance by Maximum Number of Lanes Blocked

	Current Week	Last Week	YTD
0			
1	26.27	25.95	25.12
2	24.47	32.46	53.83
3	116.84	0.00	82.07
4	38.96	0.00	362.92
5	0.00	0.00	128.32
6	0.00	0.00	22.35

Roadway Clearance Time (2A)



Performance Measures by Roadway

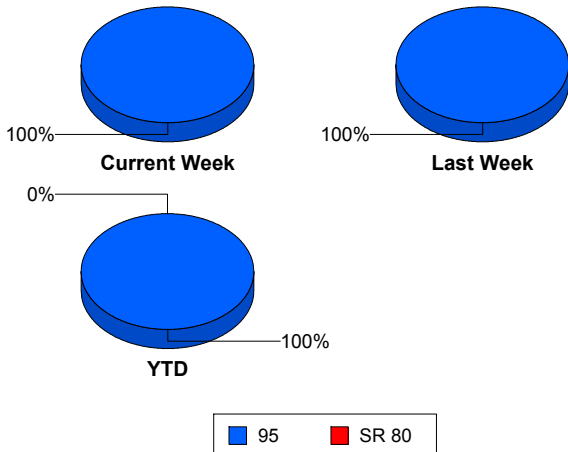
95

	<u>Current Week</u>	<u>Last Week</u>	<u>YTD</u>
Number of Events	310	308	7,466
Number of Incidents	17	15	484
TMC Detection (min.)	0.00	0.00	0.00
TMC Verification (min.)	2.77	3.74	3.38
TMC Response (min.)	5.02	5.65	5.46
RR Dispatch Time (min.)	2.47	1.49	1.84
RR Resp. Time (min.)	2.57	4.17	3.65
Event Clearance (min.)	21.06	23.74	23.08
Roadway Clear. (min.)	43.64	28.12	39.33
Incident Clearance (min.)	75.48	48.41	62.57
# of Events w/ RR/SIRV	278	258	6,117
RR/SIRV Responses	278	258	6,117
RR/SIRV Activities	305	280	6,769

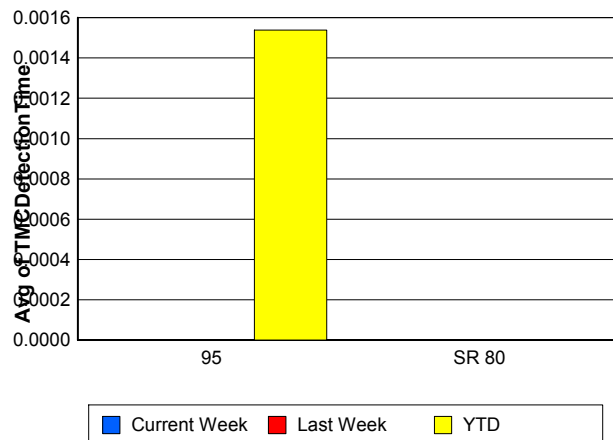
SR 80

	<u>YTD</u>
Number of Events	3
Number of Incidents	2
TMC Detection (min.)	0.00
TMC Verification (min.)	0.00
TMC Response (min.)	
RR Dispatch Time (min.)	
RR Resp. Time (min.)	
Event Clearance (min.)	1,813.57
Roadway Clear. (min.)	2,663.80
Incident Clearance (min.)	2,671.02
# of Events w/ RR/SIRV	0
RR/SIRV Responses	0
RR/SIRV Activities	0

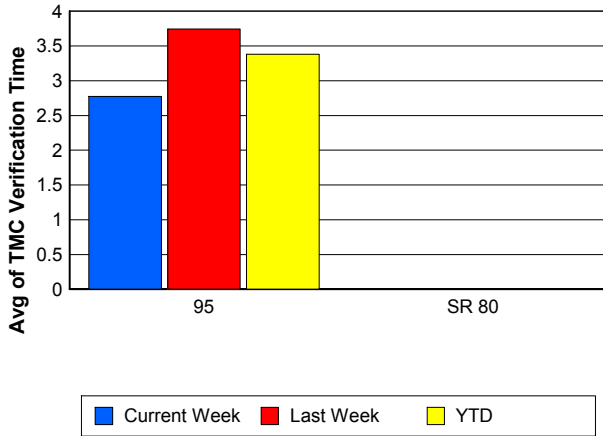
Number of Events / Roadway



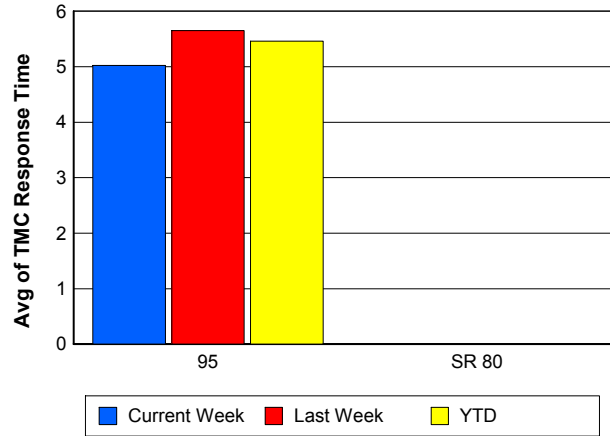
TMC Detection Time



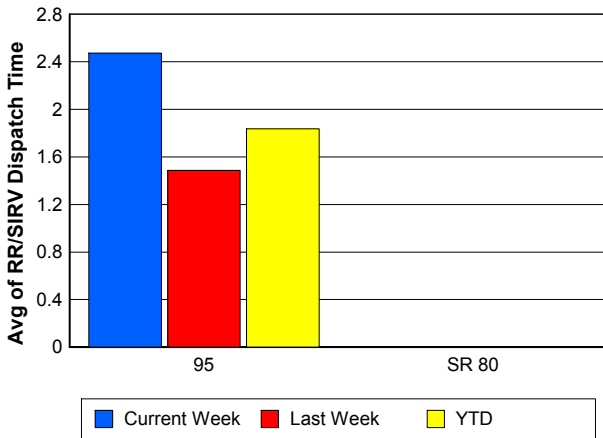
TMC Verification Time



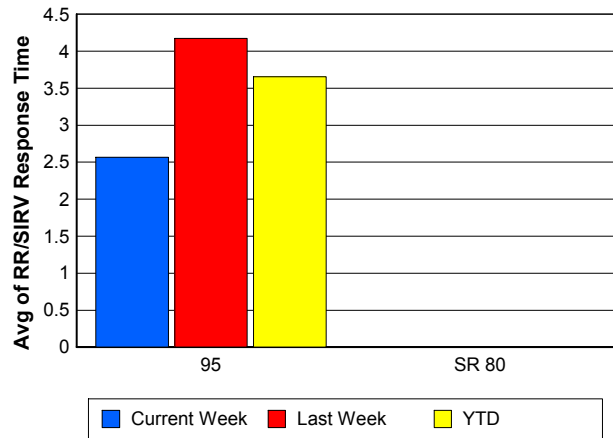
TMC Response Time



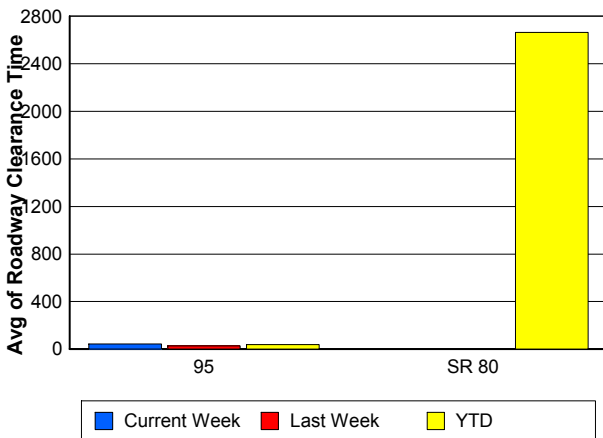
Road Ranger / SIRV Dispatch Time



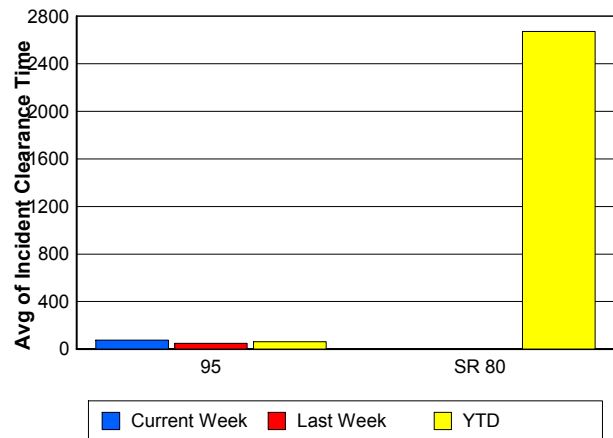
Road Ranger / SIRV Response Time



Roadway Clearance Time (2A)



Incident Clearance Time (3B)



Performance Measures by Event Type

Accident

	<u>Current Week</u>	<u>Last Week</u>	<u>YTD</u>
Number of Events	21	18	661
Number of Incidents	11	10	316
TMC Detection (min.)	0.00	0.00	0.01
TMC Verification (min.)	2.33	3.32	3.58
TMC Response (min.)	25.84	6.81	8.43
RR Dispatch Time (min.)	20.02	1.39	3.55
RR Response Time (min.)	5.82	5.42	4.88
Event Clearance (min.)	67.01	56.99	58.31
Roadway Clearance (min.)	48.84	34.31	45.15
Incident Clearance (min.)	90.31	62.51	72.97
# of Events w/ RR/SIRV	18	10	514
RR/SIRV Assists	18	10	514
RR/SIRV Activities	22	15	664

Debris on Roadway

	<u>Current Week</u>	<u>Last Week</u>	<u>YTD</u>
Number of Events	25	17	540
Number of Incidents	1	0	23
TMC Detection (min.)	0.00	0.00	0.00
TMC Verification (min.)	5.24	7.23	8.26
TMC Response (min.)	5.23	7.30	8.64
RR Dispatch Time (min.)	1.06	1.87	1.78
RR Response Time (min.)	4.18	5.42	6.87
Event Clearance (min.)	10.35	10.02	12.37
Roadway Clearance (min.)	80.12		17.47
Incident Clearance (min.)	91.60		21.61
# of Events w/ RR/SIRV	25	16	531
RR/SIRV Assists	25	16	531
RR/SIRV Activities	26	16	570

Disabled Vehicle

	<u>Current Week</u>	<u>Last Week</u>	<u>YTD</u>
Number of Events	242	246	5,329
Number of Incidents	3	4	101
TMC Detection (min.)	0.00	0.00	0.00
TMC Verification (min.)	2.76	3.94	3.30
TMC Response (min.)	3.24	5.61	4.45
RR Dispatch Time (min.)	1.19	1.50	1.42
RR Response Time (min.)	2.10	4.12	3.08
Event Clearance (min.)	17.91	19.26	17.97
Roadway Clearance (min.)	16.52	11.22	20.58
Incident Clearance (min.)	37.46	11.92	31.07
# of Events w/ RR/SIRV	228	226	4,872
RR/SIRV Assists	228	226	4,872
RR/SIRV Activities	252	243	5,344

Emergency Vehicles

	<u>Current Week</u>	<u>YTD</u>
Number of Events	1	11
Number of Incidents	1	5
TMC Detection (min.)	0.00	0.00
TMC Verification (min.)	0.00	1.26
TMC Response (min.)		9.08
RR Dispatch Time (min.)	0.82	3.89
RR Response Time (min.)		4.43
Event Clearance (min.)	5.07	39.00
Roadway Clearance (min.)	5.73	25.38
Incident Clearance (min.)	5.07	29.06
# of Events w/ RR/SIRV	1	5
RR/SIRV Assists	1	5
RR/SIRV Activities	0	6

Other

	<u>Current Week</u>	<u>Last Week</u>	<u>YTD</u>
Number of Events	17	12	574
Number of Incidents	0	0	6
TMC Detection (min.)	0.00	0.00	0.00
TMC Verification (min.)	0.57	0.29	1.19
TMC Response (min.)	11.58	1.15	20.77
RR Dispatch Time (min.)	5.84	0.37	10.76
RR Response Time (min.)	4.71	0.78	8.15
Event Clearance (min.)	23.97	88.15	38.85
Roadway Clearance (min.)			38.11
Incident Clearance (min.)			52.15
# of Events w/ RR/SIRV	5	3	128
RR/SIRV Assists	5	3	128
RR/SIRV Activities	4	3	112

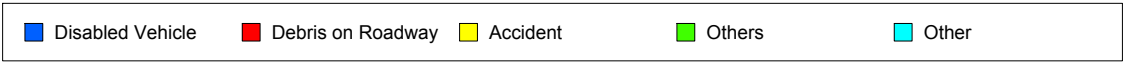
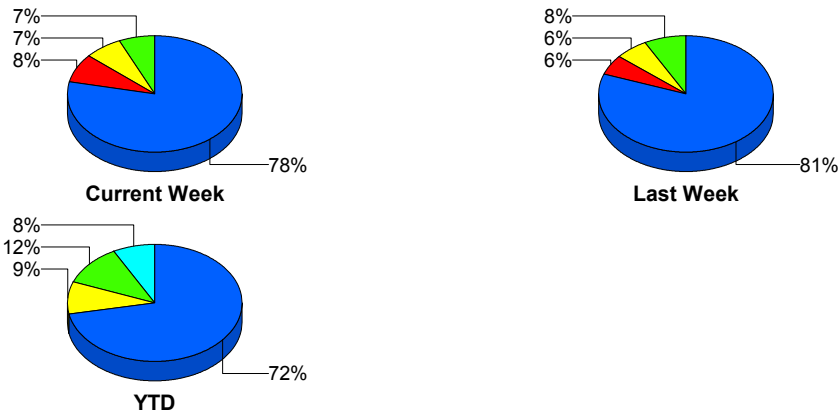
Police Activity

	<u>Current Week</u>	<u>Last Week</u>	<u>YTD</u>
Number of Events	2	11	291
Number of Incidents	1	0	25
TMC Detection (min.)	0.00	0.00	0.02
TMC Verification (min.)	0.00	0.00	0.16
TMC Response (min.)		0.00	9.89
RR Dispatch Time (min.)		0.00	6.36
RR Response Time (min.)		0.00	3.54
Event Clearance (min.)	52.72	20.03	24.72
Roadway Clearance (min.)	69.25		65.84
Incident Clearance (min.)	80.72		100.89
# of Events w/ RR/SIRV	0	1	23
RR/SIRV Assists	0	1	23
RR/SIRV Activities	0	1	26

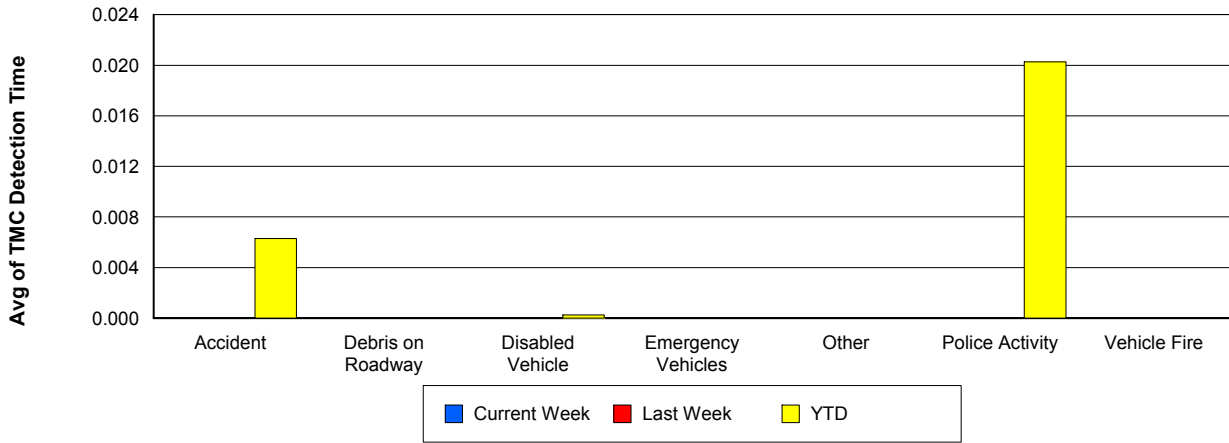
Vehicle Fire

	<u>Current Week</u>	<u>Last Week</u>	<u>YTD</u>
Number of Events	1	1	14
Number of Incidents	0	1	9
TMC Detection (min.)	0.00	0.00	0.00
TMC Verification (min.)	0.00	0.00	2.01
TMC Response (min.)	2.47	0.00	5.77
RR Dispatch Time (min.)	0.70	0.00	0.98
RR Response Time (min.)	1.77	0.00	4.79
Event Clearance (min.)	2.88	53.37	63.50
Roadway Clearance (min.)		33.82	35.69
Incident Clearance (min.)		53.37	72.78
# of Events w/ RR/SIRV	1	1	8
RR/SIRV Assists	1	1	8
RR/SIRV Activities	1	1	10

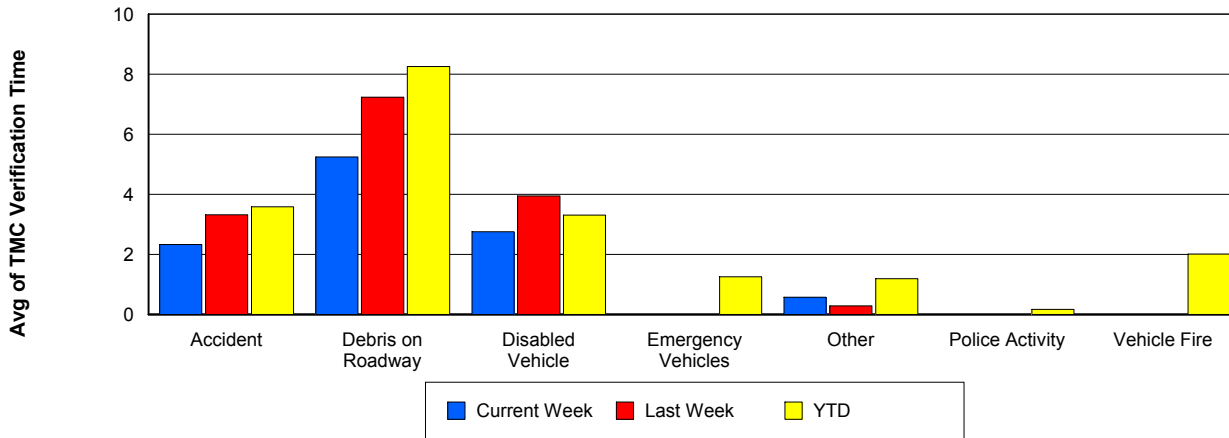
Number of Events / Event Type



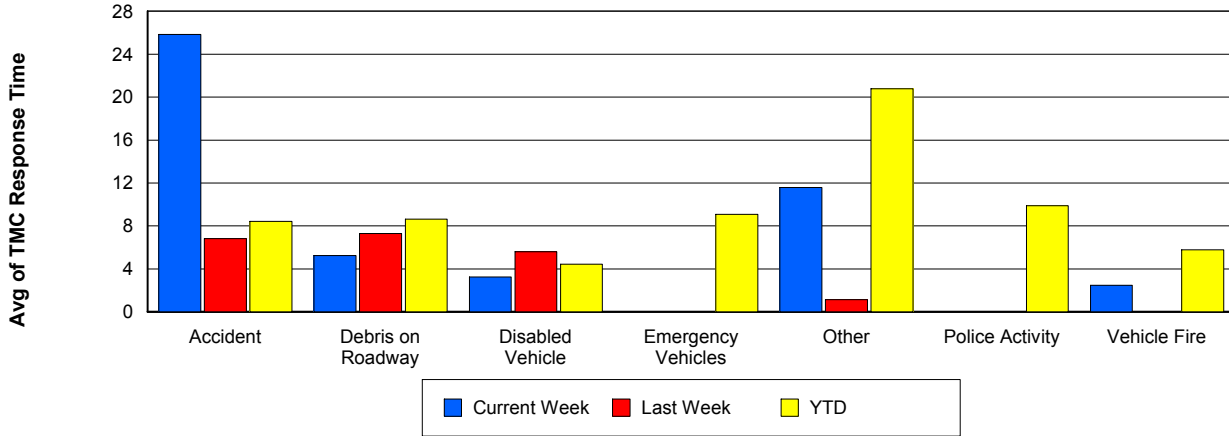
TMC Detection Time



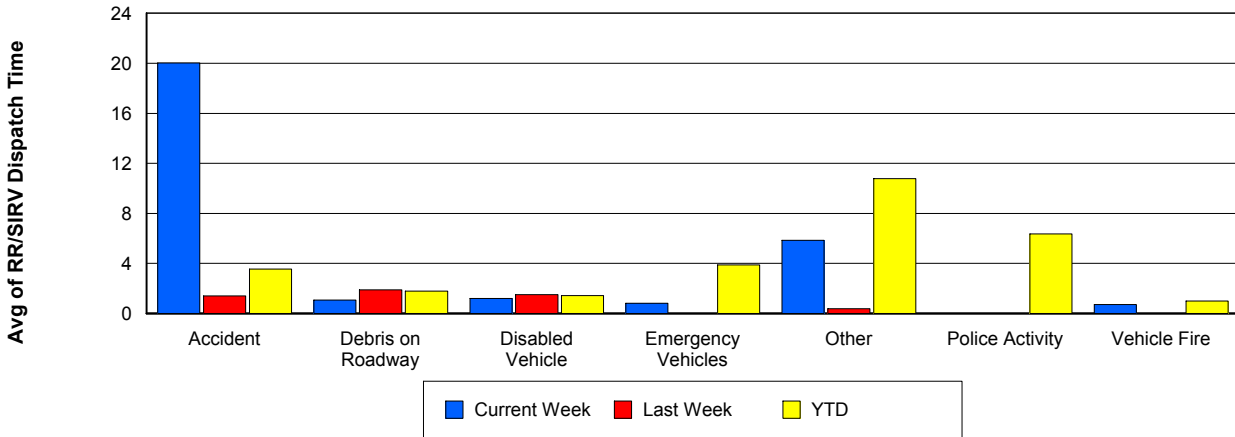
TMC Verification Time



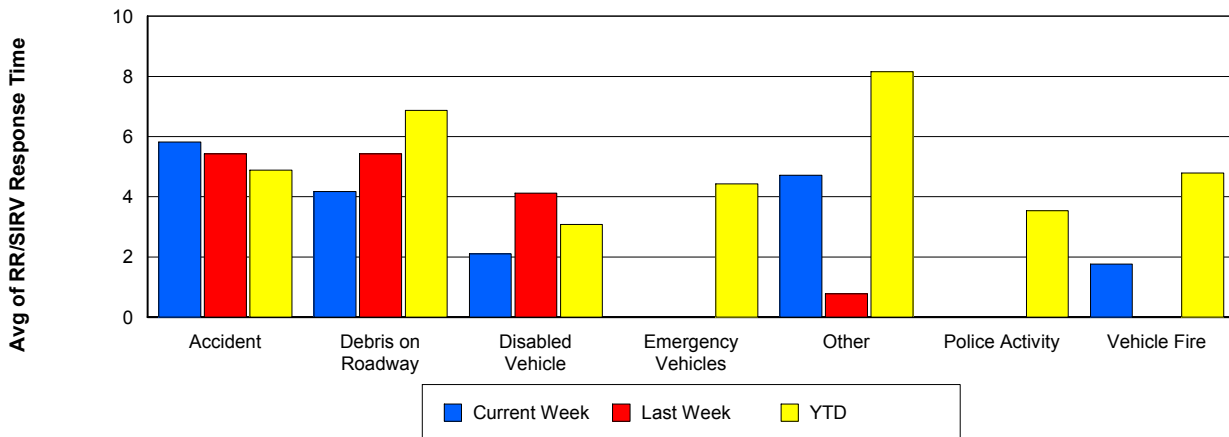
TMC Response Time



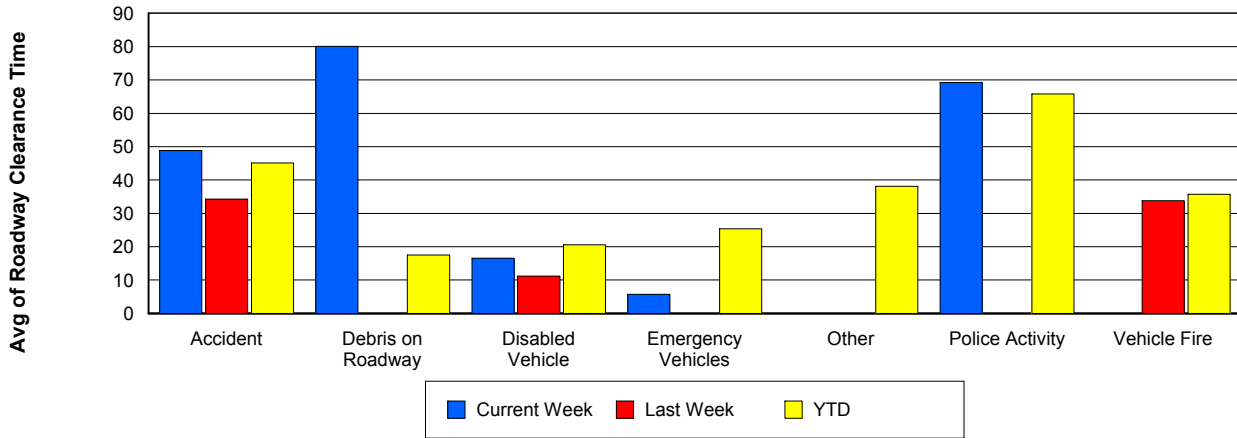
Road Ranger / SIRV Dispatch Time



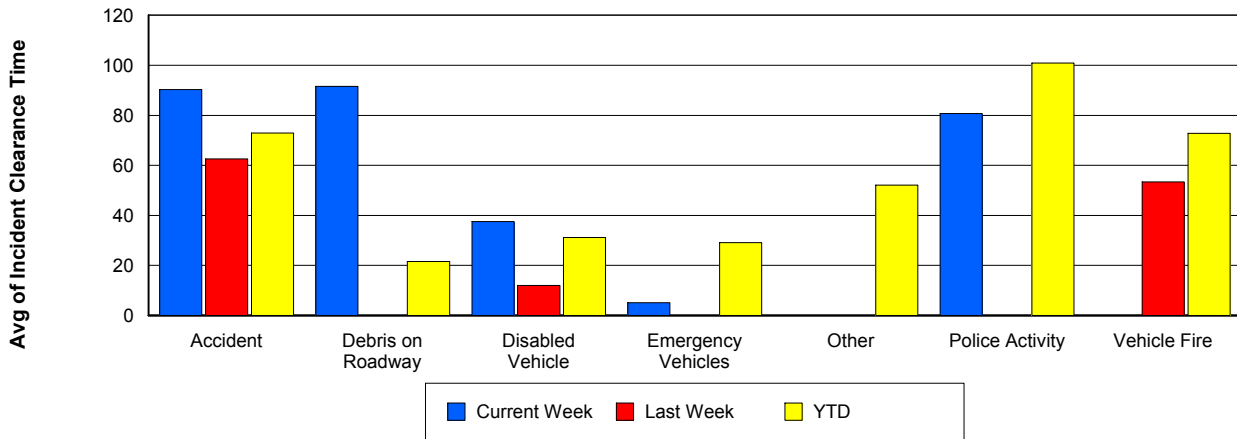
Road Ranger / SIRV Response Time



Roadway Clearance Time (2A)



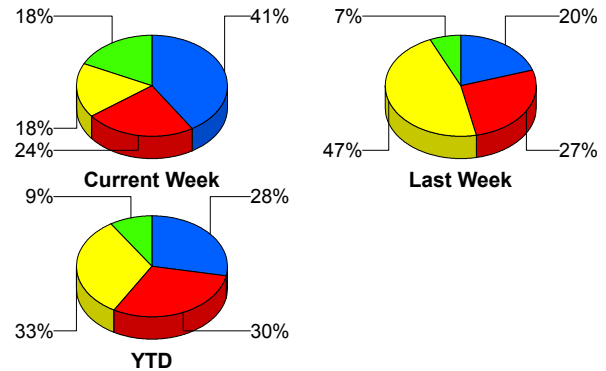
Incident Clearance Time (3B)



Incident Detection Methods

	Current Week	Last Week	YTD
Broward CCTV	1	0	6
Broward Road Ranger	0	0	5
Construction CEI	1	0	1
District 4	1	0	10
Emergency Operations	0	0	1
FHP	7	3	136
I-95 Construction PIO	0	0	2
ITMS	0	1	4
ITMS CCTV	4	4	148
Local Police	0	0	1
Motorist	0	0	9
Palm Beach Road Ran	3	7	158
Road Watcher	0	0	1
SmarTraveler (511)	0	0	4
Total	17	15	486

Total Incidents by Detection Method

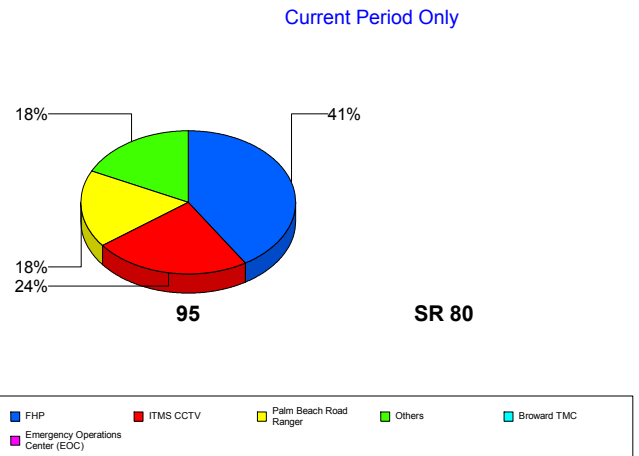


■ FHP
 ■ ITMS CCTV
 ■ Palm Beach Road Ranger
 ■ Others

Incident Detection Methods by Roadway

		Current Week	Last Week	YTD
95	Broward CCTV	1	0	6
	Broward Road Ranger	0	0	5
	Construction CEI	1	0	1
	District 4	1	0	10
	FHP	7	3	135
	I-95 Construction PIO	0	0	2
	ITMS	0	1	4
	ITMS CCTV	4	4	148
	Local Police	0	0	1
	Motorist	0	0	9
	Palm Beach Road Ran	3	7	158
	Road Watcher	0	0	1

Total Events by Roadway and Detection Method



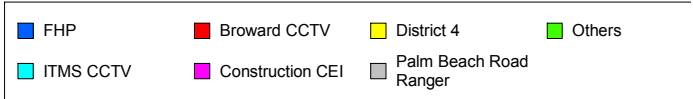
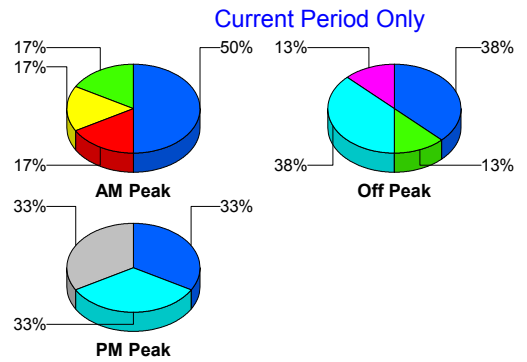
■ FHP
 ■ ITMS CCTV
 ■ Palm Beach Road Ranger
 ■ Others
 ■ Broward TMC

		Current Week	Last Week	YTD
95	SmarTraveler (511)	0	0	4
	Total	17	15	484
SR 80	Emergency Operations	0	0	1
	FHP	0	0	1
	Total	0	0	2
Total		17	15	486

Incident Detection Methods by Peak Period

		Current Week	Last Week	YTD
AM Peak	Broward CCTV	1	0	2
	Broward Road Ranger	0	0	3
	District 4	1	0	7
	FHP	3	0	51
	ITMS	0	0	2
	ITMS CCTV	0	1	22
	Motorist	0	0	4
	Palm Beach Road Ran	1	1	55
	Road Watcher	0	0	1
	SmarTraveler (511)	0	0	3
	Total	6	2	150
	Off Peak	Broward CCTV	0	0
Broward Road Ranger		0	0	1
Construction CEI		1	0	1
District 4		0	0	3
FHP		3	3	59
I-95 Construction PIO		0	0	2
ITMS		0	1	2
ITMS CCTV		3	1	72
Motorist		0	0	2
Palm Beach Road Ran		1	1	55
SmarTraveler (511)		0	0	1
Total		8	6	202

Total Events by Peak Period and Detection Method

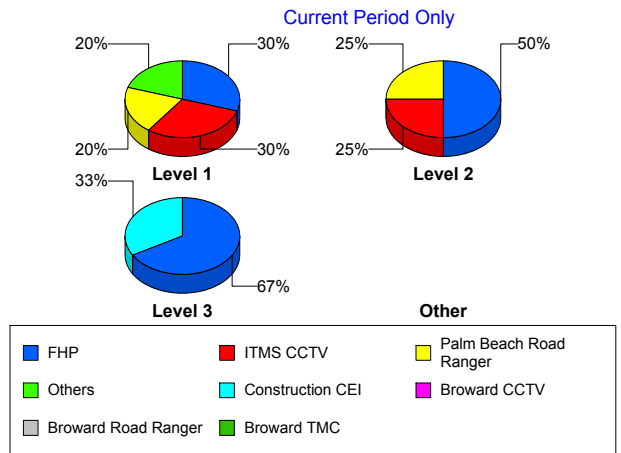


		Current Week	Last Week	YTD
PM Peak	Broward Road Ranger	0	0	1
	Emergency Operations	0	0	1
	FHP	1	0	26
	ITMS CCTV	1	2	54
	Local Police	0	0	1
	Motorist	0	0	3
	Palm Beach Road Ran	1	5	48
	Total	3	7	134
Total		17	15	486

Incident Detection Methods by Severity

		Current Week	Last Week	YTD
Level 1	Broward CCTV	1	0	4
	Broward Road Ranger	0	0	3
	District 4	1	0	8
	FHP	3	2	62
	I-95 Construction PIO	0	0	1
	ITMS	0	0	1
	ITMS CCTV	3	1	63
	Local Police	0	0	1
	Motorist	0	0	6
	Palm Beach Road Ran	2	5	114
	Road Watcher	0	0	1
	SmarTraveler (511)	0	0	1
	Total	10	8	265
	Level 2	Broward Road Ranger	0	0
District 4		0	0	2
FHP		2	1	55
I-95 Construction PIO		0	0	1
ITMS		0	1	3
ITMS CCTV		1	3	62
Motorist		0	0	2

Total Events by Severity and Detection Method



		Current Week	Last Week	YTD
Level 2	Palm Beach Road Ran	1	1	35
	SmarTraveler (511)	0	0	3
	Total	4	6	165
Level 3	Broward CCTV	0	0	2
	Construction CEI	1	0	1
	Emergency Operations	0	0	1
	FHP	2	0	19
	ITMS CCTV	0	0	23
	Motorist	0	0	1
	Palm Beach Road Ran	0	1	9
	Total	3	1	56
Total		17	15	486

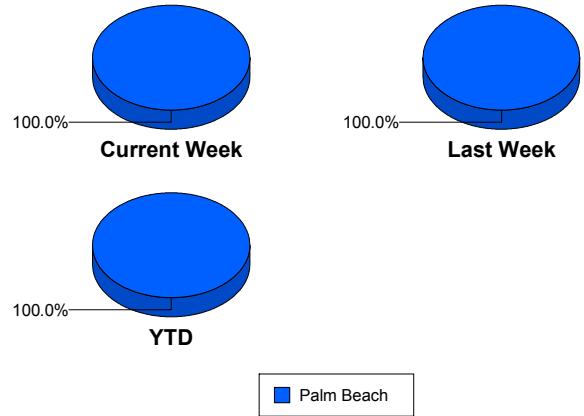
Road Ranger / SIRV Performance Measures

Road Ranger / SIRV Performance By County

RR/SIRV Responses per County

Values presented are:
 - Total Events with a RR/SIRV Response
 - Total RR/SIRV Responses,
 - Total Activities Performed

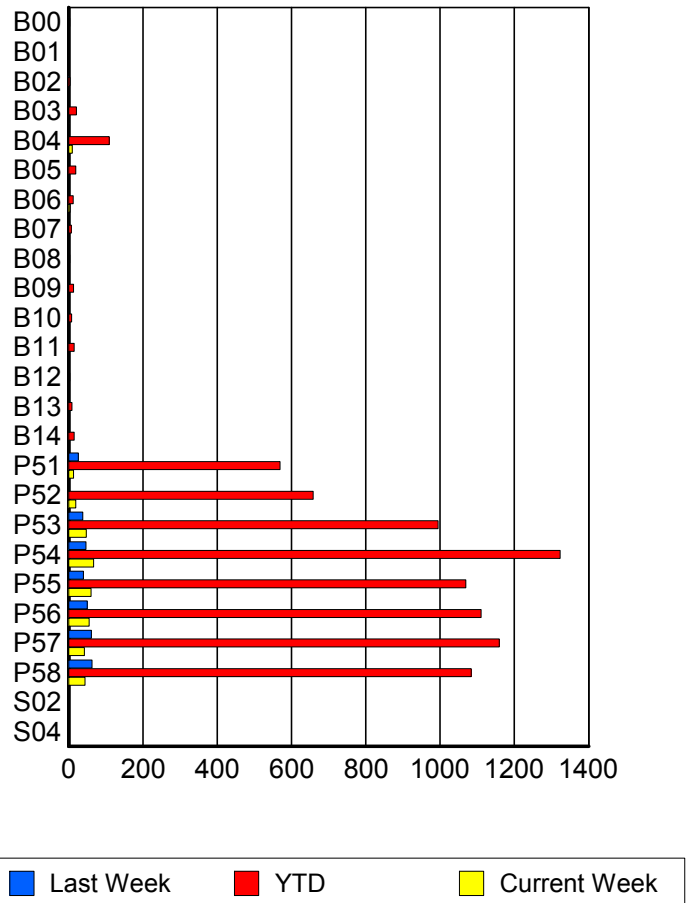
	Current We	Last Week	YTD
Palm Beach	353	330	7,954
	367	335	8,212
	387	359	8,762



Road Ranger / SIRV Performance By Truck

	Current We	Last Week	YTD
B00	0	1	3
	0	1	3
	0	1	3
B01	0	0	1
	0	0	1
	0	0	1
B02	0	1	4
	0	1	4
	0	1	4
B03	2	2	21
	2	2	21
	2	2	22
B04	10	2	108
	10	2	109
	11	2	125
B05	0	0	18
	0	0	19
	0	0	20
B06	4	2	12
	4	2	12
	4	2	12
B07	0	0	7
	0	0	7
	0	0	7
B08	0	0	3
	0	0	3
	0	0	3

RR/SIRV Responses per Truck



	Current We	Last Week	YTD
B09	1 1 1	2 2 2	13 13 13
B10	0 0 0	0 0 0	8 8 8
B11	1 1 1	0 0 0	15 15 16
B12	0 0 0	0 0 0	3 3 3
B13	1 1 1	0 0 0	9 9 10
B14	0 0 0	0 0 0	15 15 16
P51	13 13 14	26 26 27	564 569 596
P52	19 19 20	0 0 0	654 658 699
P53	48 48 49	37 38 41	983 995 1,060
P54	63 67 71	47 47 51	1,309 1,323 1,416
P55	60 60 67	40 40 41	1,060 1,069 1,140
P56	54 55 56	50 50 56	1,097 1,110 1,195
P57	42 42 44	61 61 66	1,152 1,159 1,245
P58	43 44 46	62 63 67	1,070 1,084 1,145
S02	0 0 0	0 0 0	1 1 1

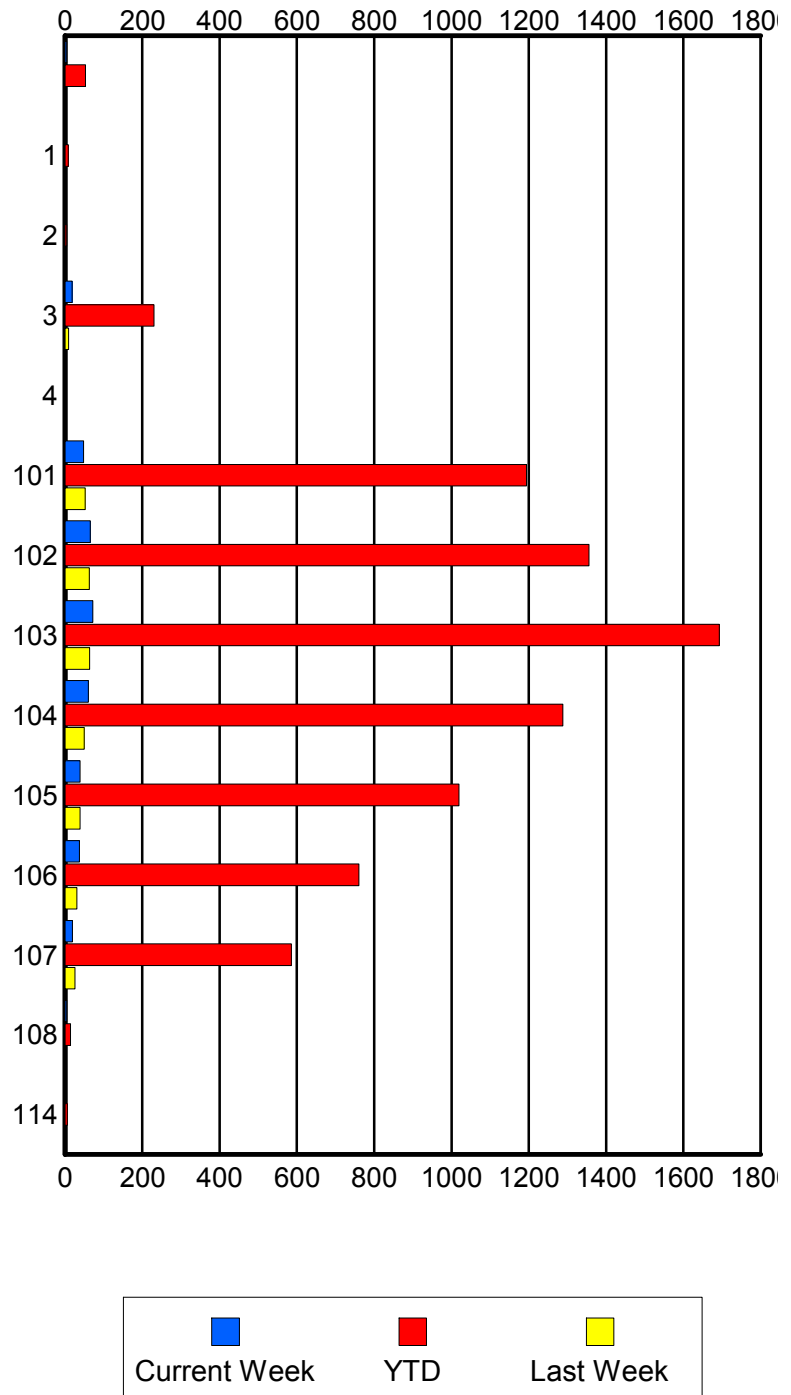
	Current We	Last Week	YTD
S04	0	0	2
	0	0	2
	0	0	2

Road Ranger / SIRV Performance By Beat

	Current We	Last Week	YTD
	4	0	53
	4	0	53
	4	0	53
1	0	1	8
	0	1	8
	0	1	9
2	1	0	4
	1	0	4
	1	0	5
3	17	9	227
	18	9	230
	19	9	249
4	0	0	1
	0	0	1
	0	0	1
101	48	51	1,180
	48	52	1,194
	50	57	1,284
102	64	62	1,341
	65	63	1,356
	71	67	1,439
103	71	64	1,673
	72	64	1,693
	76	71	1,820
104	56	50	1,276
	60	50	1,288
	63	51	1,380
105	39	39	1,011
	39	39	1,019
	42	40	1,082
106	37	31	752
	37	31	760
	37	36	810
107	19	26	581
	19	26	586
	20	27	610
108	4	0	13
	4	0	14
	4	0	14
114	0	0	6
	0	0	6
	0	0	6

Values presented are:
 - Total Events with a RR/SIRV Response
 - Total RR/SIRV Responses,
 - Total Activities Performed

RR/SIRV Responses per Beat

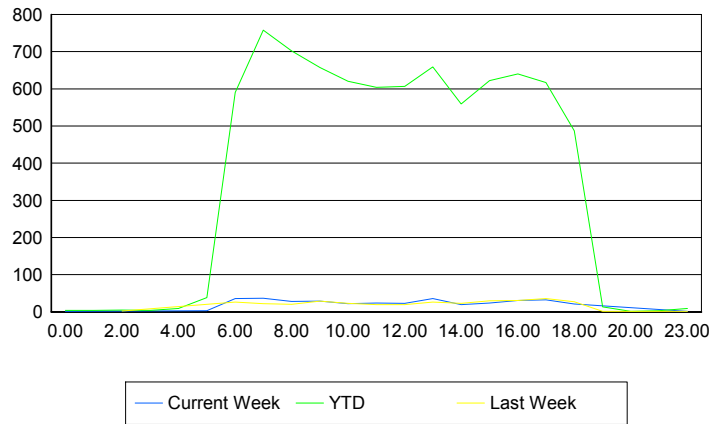


Road Ranger / SIRV Performance By Time of Day

Values presented are:
 - Total Events with a RR/SIRV Response
 - Total RR/SIRV Responses,
 - Total Activities Performed

	Current We	Last Week	YTD
12AM-1AM	1	0	4
	1	0	4
	1	0	4
1AM-2AM	0	0	4
	0	0	4
	0	0	4
2AM-3AM	0	2	5
	0	2	5
	0	3	6
3AM-4AM	0	0	4
	0	0	4
	0	0	4
4AM-5AM	0	0	6
	0	0	9
	0	0	10
5AM-6AM	3	0	36
	3	0	38
	4	0	39
6AM-7AM	35	26	566
	36	26	590
	38	28	621
7AM-8AM	35	20	727
	37	22	758
	40	24	811
8AM-9AM	27	20	677
	28	20	702
	30	21	756
9AM-10AM	28	27	636
	29	29	657
	32	30	718
10AM-11AM	21	23	601
	22	23	620
	23	24	653
11AM-12PM	23	19	586
	24	19	604
	24	20	654
12PM-1PM	21	19	587
	23	19	607
	23	22	647

Number of Responses / Hour of the Day



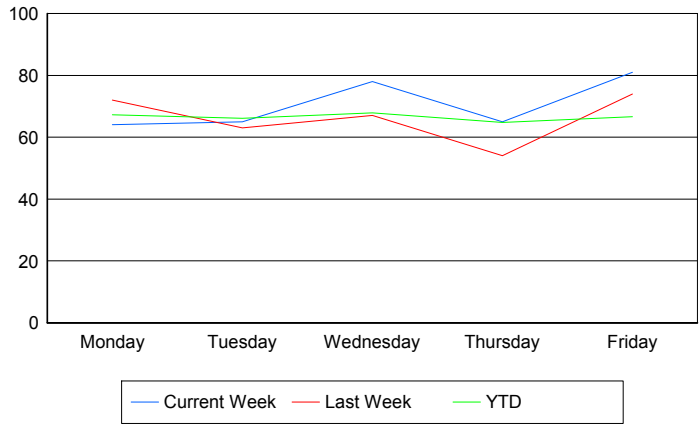
	Current We	Last Week	YTD
1PM-2PM	35	26	645
	36	26	659
	39	30	716
2PM-3PM	17	23	538
	19	23	559
	19	25	591
3PM-4PM	23	30	602
	24	30	622
	26	33	666
4PM-5PM	31	31	622
	31	31	640
	33	32	670
5PM-6PM	31	35	600
	32	36	617
	33	36	649
6PM-7PM	21	27	483
	21	27	487
	21	29	516
7PM-8PM	0	1	13
	0	1	13
	0	1	14
8PM-9PM	0	0	1
	0	0	1
	0	0	1
10PM-11PM	0	0	3
	0	0	3
	0	0	3
11PM-12AM	1	1	8
	1	1	9
	1	1	9

Road Ranger / SIRV Performance By Day of Week

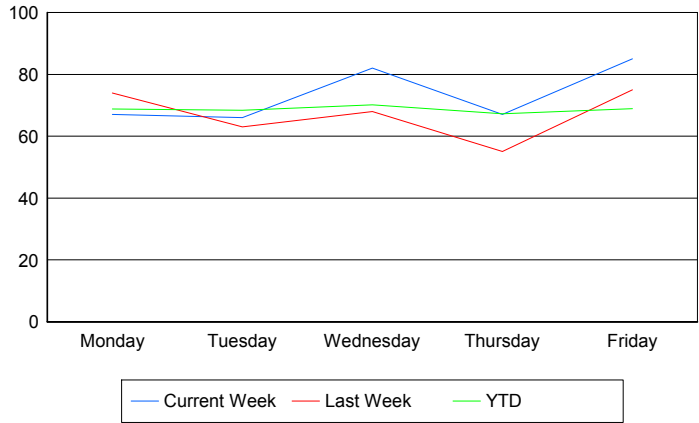
Values presented are:
 - Total Events with a RR/SIRV Response
 - Total RR/SIRV Responses,
 - Total Activities Performed

	Current We	Last Week	YTD
Monday	64	72	1,574
	67	74	1,609
	71	75	1,702
Tuesday	65	63	1,561
	66	63	1,612
	67	65	1,712
Wednesday	78	67	1,608
	82	68	1,660
	86	76	1,785
Thursday	65	54	1,583
	67	55	1,645
	72	61	1,764
Friday	81	74	1,630
	85	75	1,686
	91	82	1,799

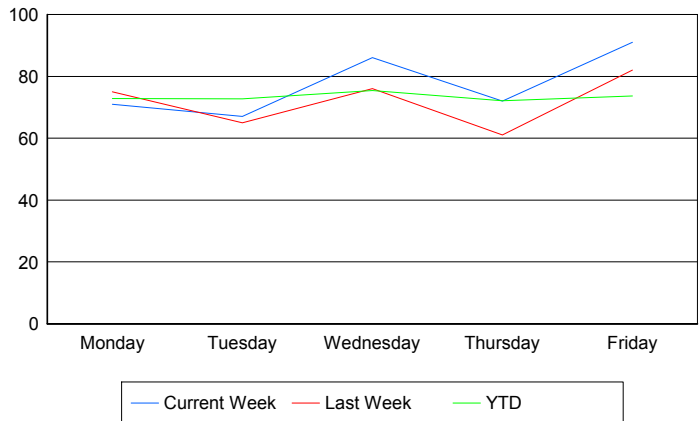
Avg # of events with a RR/SIRV Response per Day of the Week



Avg # of RR/SIRV Responses per Day of the Week



Avg # of RR/SIRV Activities Performed per Day of the Week



Road Ranger / SIRV Responses per Time of Day and Day of Week

