



Weekly Performance Measures Report Palm Beach County



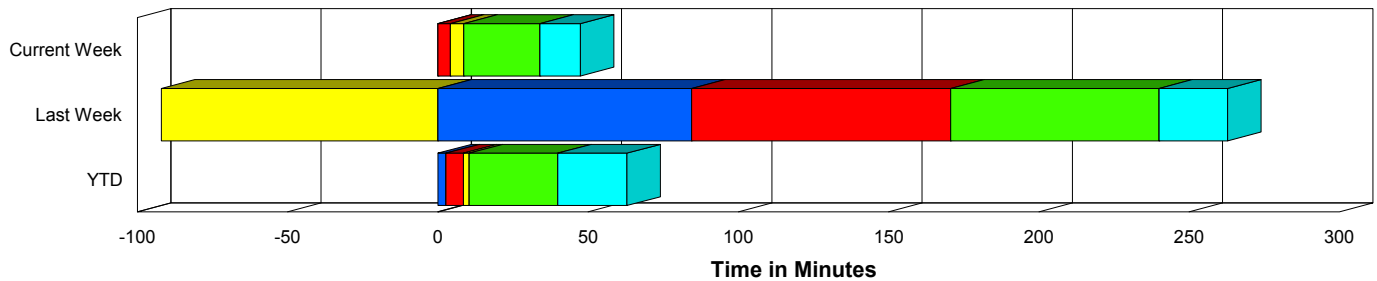
Created on:
July 06, 2009
9:19 am

Period From Jun 28, 2009 to Jul 4, 2009

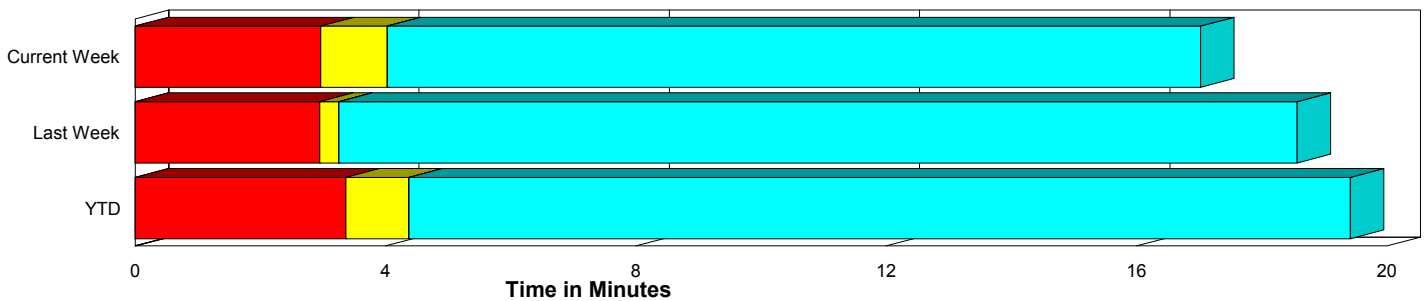
Performance Measures Summary

	Traffic Events (No Lanes Blocked)			Incidents (Lanes Blocked)		
	<u>This Week</u>	<u>Last Week</u>	<u>YTD</u>	<u>This Week</u>	<u>Last Week</u>	<u>YTD</u>
Number of Events	259	302	7,544	33	17	536
TMC Detection (min.)	0.00	0.00	0.00	0.00	84.43	2.69
TMC Verification (min.)	2.97	2.95	3.37	4.20	86.28	5.82
TMC Response (min.)	4.50	3.73	5.17	10.06	30.27	9.34
RR Dispatch Time (min.)	0.86	2.72	1.69	3.82	24.71	4.88
RR Response Time (min.)	3.64	2.82	3.58	6.24	5.56	4.43
Roadway Clearance (min.)				52.95	201.62	55.11
Event Clearance (min.)	17.50	19.05	20.20	66.40	224.45	77.68
# of Events w/ RR/SIRV	218	261	6,221	24	12	411
RR/SIRV Responses	218	261	6,221	24	12	411
RR/SIRV Activities	239	285	6,744	31	16	596

Incident Clearance Time-Line



Traffic Event (Non-Lane Blockage) Time-Line



■ Avg. TMC Detection Time	■ Avg. Time from TMC Response to Roadway Clearance*
■ Avg. Time from TMC Detection to TMC Verification	■ Avg. Time from Roadway Clearance to Incident/Event Clearance**
■ Avg. Time from TMC Verification to TMC Response	

* Roadway clearance equals all travel lanes open

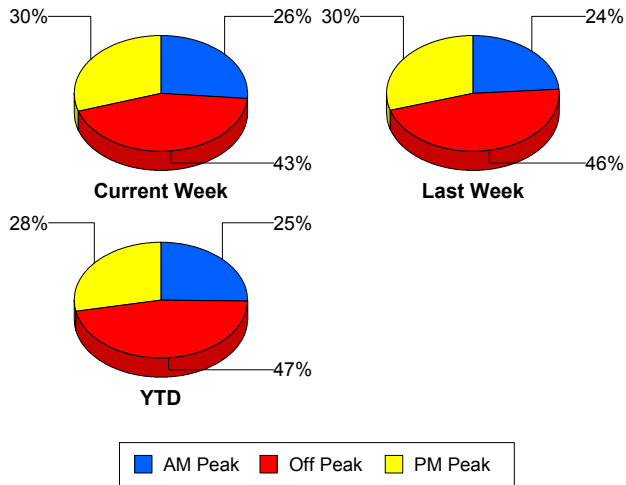
** Incident clearance equals time when last responder has left the scene

Performance Measures by Peak Period

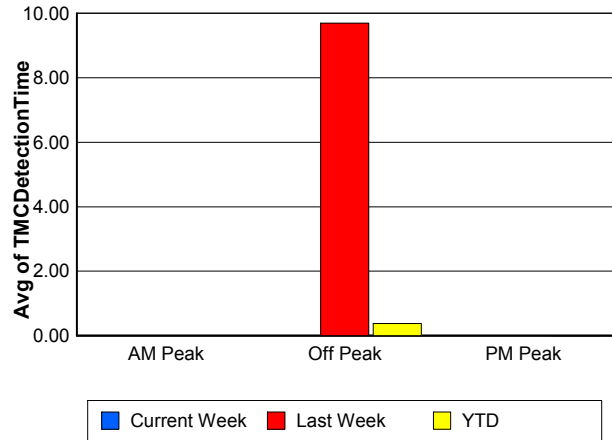
Note: AM peak period is defined as 6am to 10am and PM peak period is defined as 3pm to 7pm.

	AM Peak			Off Peak			PM Peak		
	<u>Current Week</u>	<u>Last Week</u>	<u>YTD</u>	<u>Current Week</u>	<u>Last Week</u>	<u>YTD</u>	<u>Current Week</u>	<u>Last Week</u>	<u>YTD</u>
Number of Events	77	76	2,039	127	148	3,779	88	95	2,262
Number of Incidents	12	2	164	15	11	228	6	4	144
TMC Detection (min.)	0.00	0.00	0.00	0.00	9.70	0.38	0.00	0.00	0.00
TMC Verification (min.)	2.54	3.02	3.10	3.37	11.93	3.27	3.24	3.91	4.34
TMC Response (min.)	3.97	3.51	4.20	6.21	6.19	6.53	4.72	4.58	5.19
RR Dispatch Time (min.)	0.81	0.61	1.03	1.77	7.90	3.06	0.76	1.20	1.24
RR Response Time (min.)	3.16	2.90	3.22	4.42	2.60	3.67	3.97	3.37	3.97
Event Clearance (min.)	27.56	16.41	22.02	23.32	46.92	26.75	18.63	14.49	21.25
Roadway Clearance (min.)	64.46	27.27	40.06	52.71	301.20	58.55	30.49	14.93	66.80
Incident Clearance (min.)	76.02	39.03	63.43	68.26	323.80	83.28	42.47	43.97	85.04
# of Events w/ RR/SIRV	70	75	1,938	92	108	2,587	80	90	2,107
RR/SIRV Responses	70	75	1,938	92	108	2,587	80	90	2,107
RR/SIRV Activities	79	83	2,199	105	122	2,862	86	96	2,279

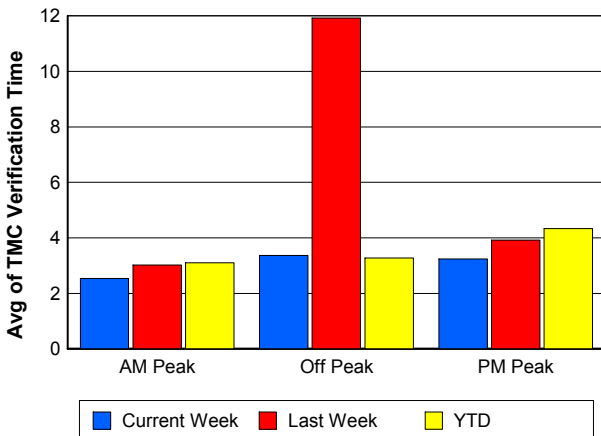
Number of Events / Peak Period



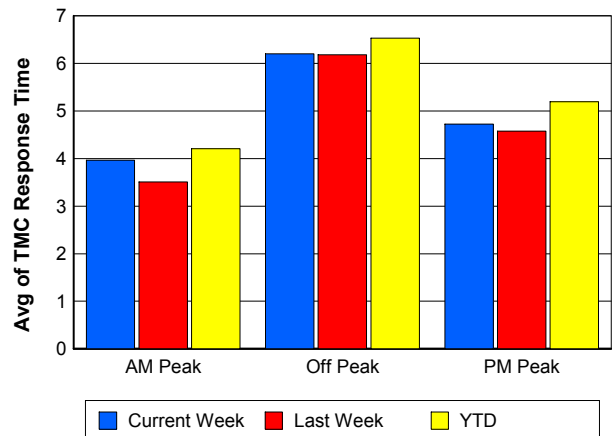
TMC Detection Time



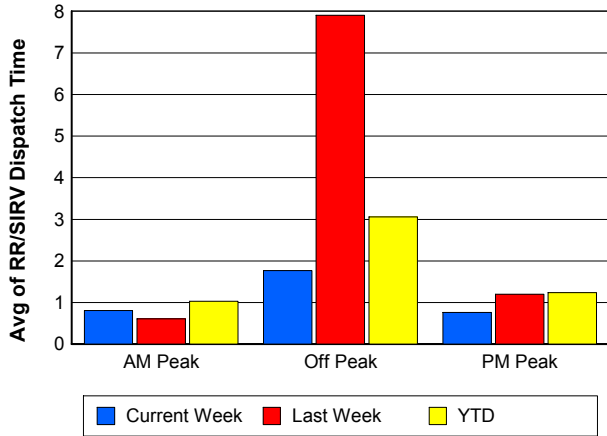
TMC Verification Time



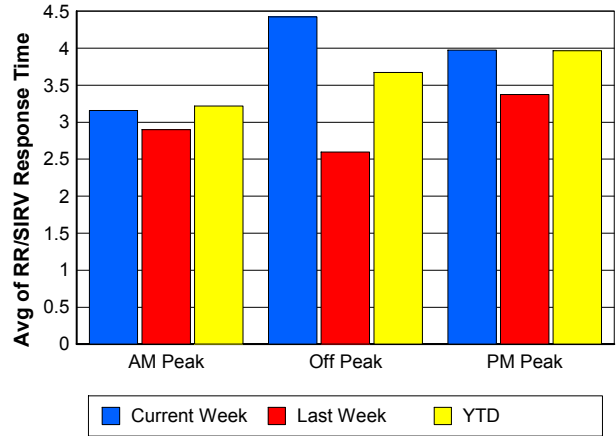
TMC Response Time



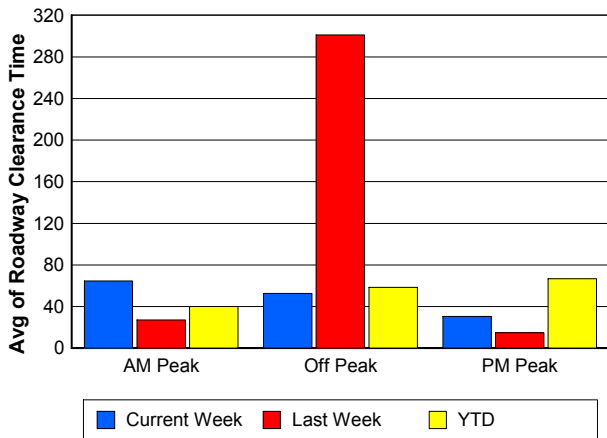
Road Ranger / SIRV Dispatch Time



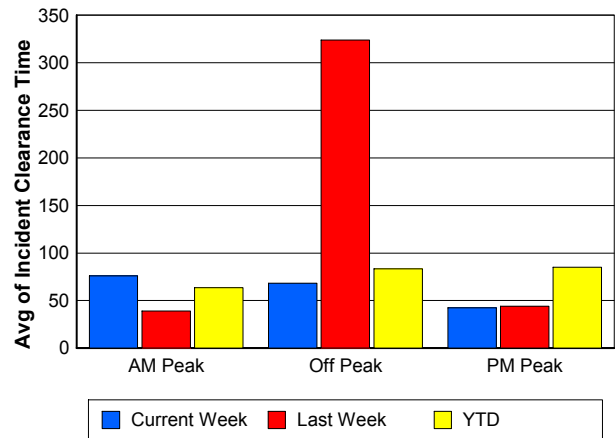
Road Ranger / SIRV Response Time



Roadway Clearance Time (2A)



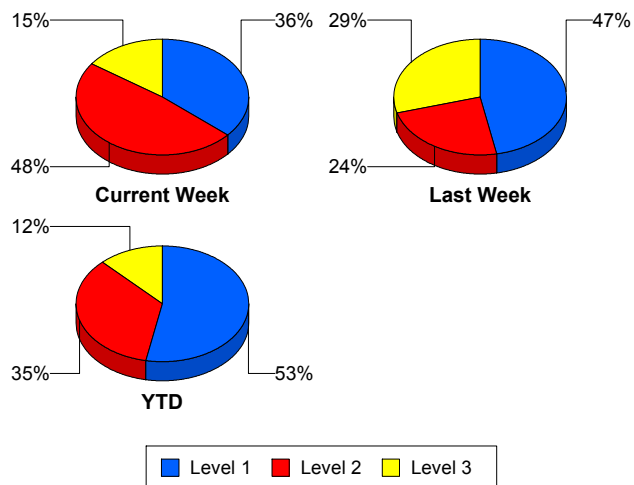
Incident Clearance Time (3B)



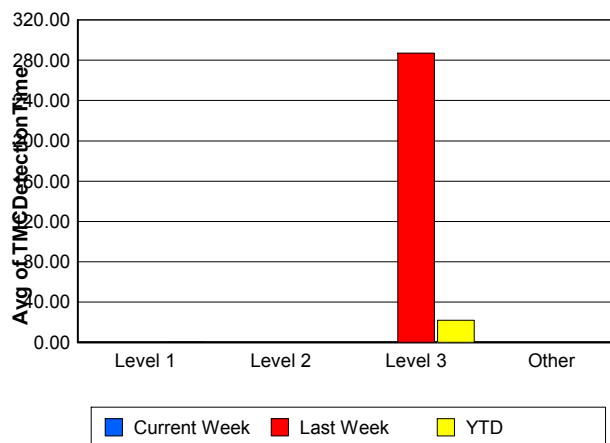
Performance Measures by Severity

	Level 1			Level 2			Level 3			Other		
	<u>This Week</u>	<u>Last Week</u>	<u>YTD</u>	<u>This Week</u>	<u>Last Week</u>	<u>YTD</u>	<u>This Week</u>	<u>Last Week</u>	<u>YTD</u>	<u>This Week</u>	<u>Last Week</u>	<u>YTD</u>
Number of Events	12	8	285	16	4	185	5	5	66	259	302	7,544
Number of Incidents	12	8	285	16	4	185	5	5	66	0	0	0
TMC Detection (min.)	0.00	0.00	0.02	0.00	0.00	0.00	0.00	287.05	21.77	0.00	0.00	0.00
TMC Verification (min.)	2.16	1.74	2.35	6.11	6.04	3.98	3.02	285.74	26.26	2.97	2.95	3.37
TMC Response (min.)	3.73	6.08	4.24	11.13	11.50	8.88	66.92	143.11	39.81	4.50	3.73	5.17
RR Dispatch Time (min.)	0.45	2.10	1.06	3.52	3.07	3.04	44.48	136.33	32.53	0.86	2.72	1.69
RR Resp. Time (min.)	3.28	3.98	3.20	7.60	8.43	5.84	22.43	6.78	7.27	3.64	2.82	3.58
Event Clearance (min.)	39.74	31.77	39.44	54.50	59.46	73.70	168.44	664.73	253.95	17.50	19.05	20.20
Roadway Clear. (min.)	15.52	12.44	14.52	51.42	45.00	53.11	147.63	629.58	235.96			
Incident Clearance (min.)	39.74	31.77	39.44	54.50	59.46	73.70	168.44	664.73	253.95			
# of Events w/ RR/SIRV	11	7	243	12	3	126	1	2	42	218	261	6,221
RR/SIRV Responses	11	7	243	12	3	126	1	2	42	218	261	6,221
RR/SIRV Activities	13	8	315	17	4	209	1	4	72	239	285	6,744

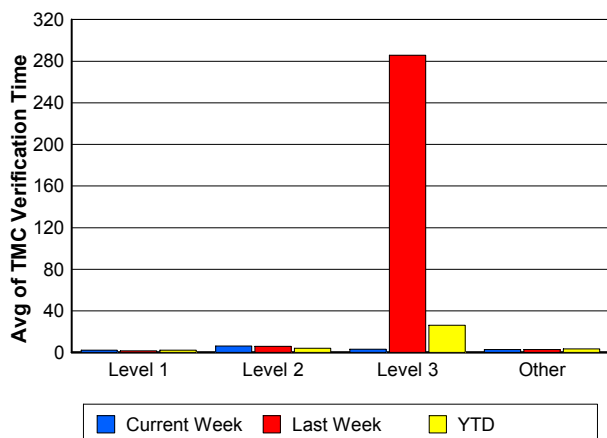
Number of Events / Severity



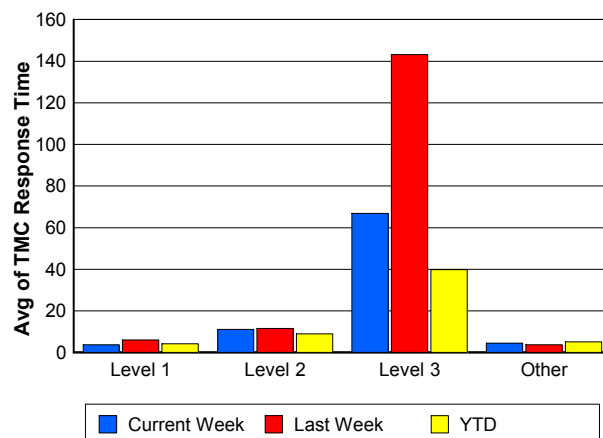
TMC Detection Time



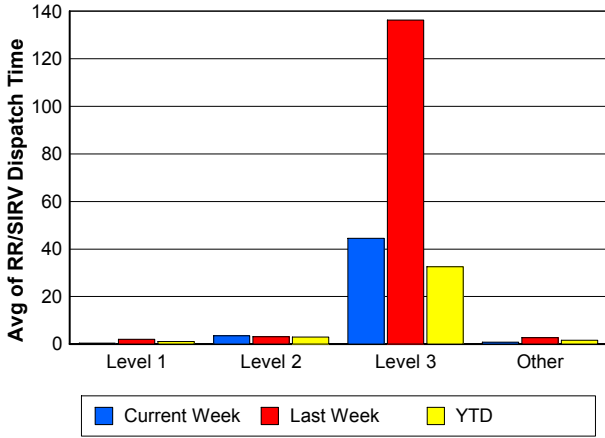
TMC Verification Time



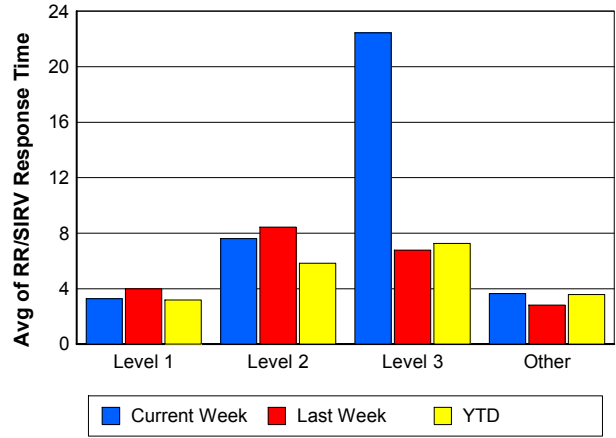
TMC Response Time



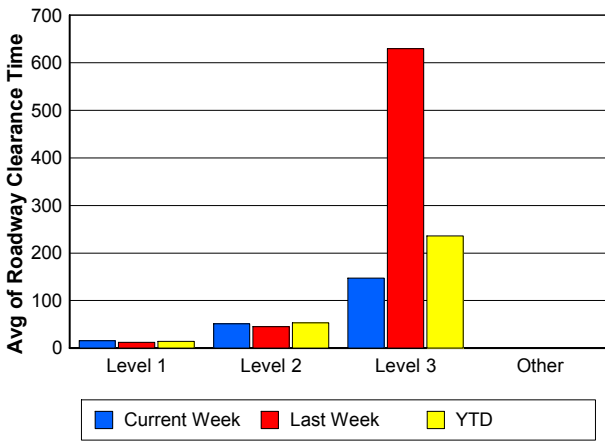
Road Ranger / SIRV Dispatch Time



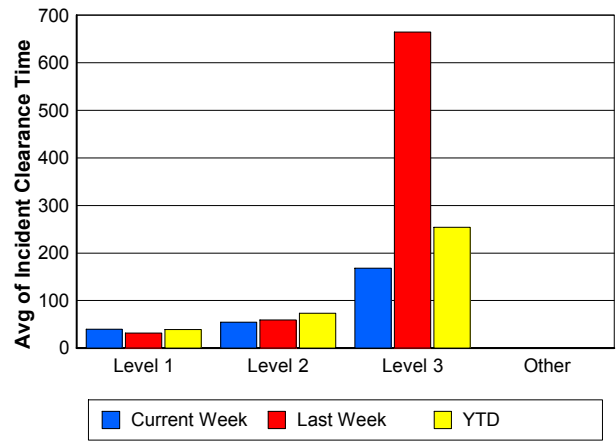
Road Ranger / SIRV Response Time



Roadway Clearance Time (2A)



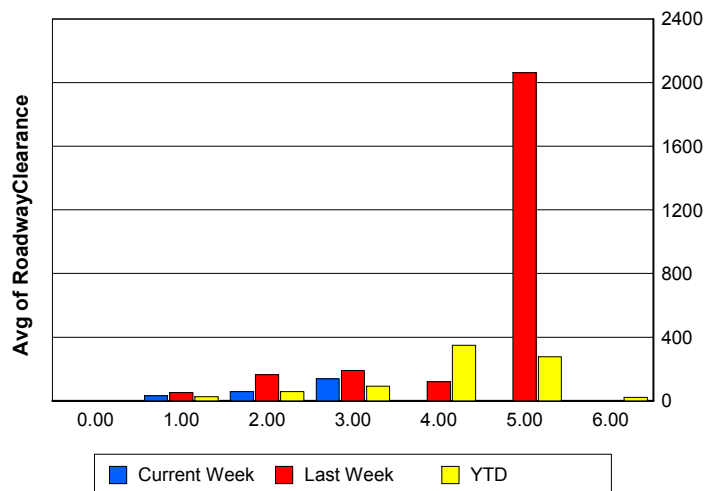
Incident Clearance Time (3B)



Roadway Clearance by Maximum Number of Lanes Blocked

	Current Week	Last Week	YTD
0			
1	30.85	50.94	26.30
2	58.42	164.46	57.00
3	138.08	190.35	90.89
4	0.00	120.75	349.47
5	0.00	2,062.62	277.11
6	0.00	0.00	22.35

Roadway Clearance Time (2A)



Performance Measures by Roadway

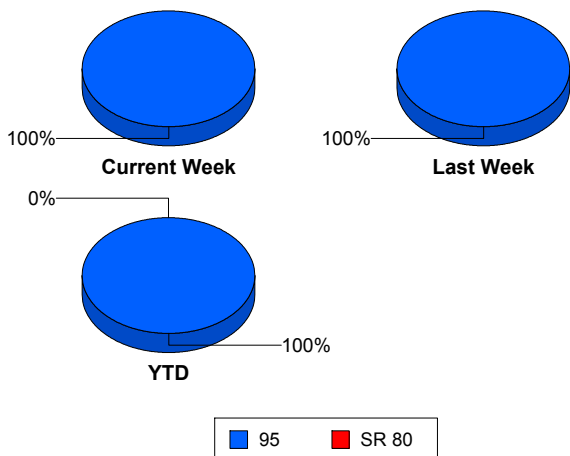
95

	<u>Current Week</u>	<u>Last Week</u>	<u>YTD</u>
Number of Events	292	319	8,077
Number of Incidents	33	17	534
TMC Detection (min.)	0.00	4.50	0.18
TMC Verification (min.)	3.11	7.41	3.53
TMC Response (min.)	5.07	4.91	5.43
RR Dispatch Time (min.)	1.16	3.69	1.89
RR Resp. Time (min.)	3.91	2.94	3.63
Event Clearance (min.)	23.02	29.99	23.35
Roadway Clear. (min.)	52.95	201.62	45.34
Incident Clearance (min.)	66.40	224.45	67.96
# of Events w/ RR/SIRV	242	273	6,632
RR/SIRV Responses	242	273	6,632
RR/SIRV Activities	270	301	7,340

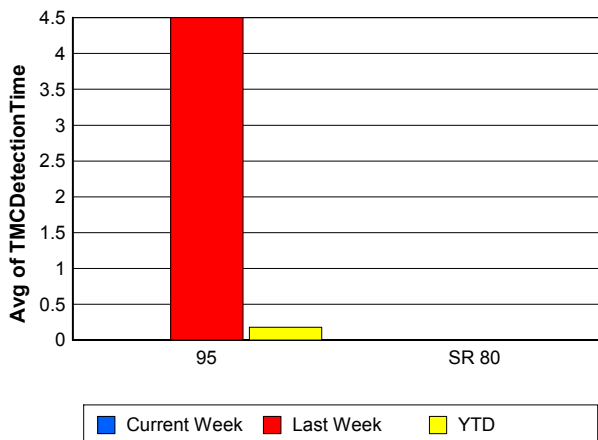
SR 80

	<u>YTD</u>
Number of Events	3
Number of Incidents	2
TMC Detection (min.)	0.00
TMC Verification (min.)	0.00
TMC Response (min.)	
RR Dispatch Time (min.)	
RR Resp. Time (min.)	
Event Clearance (min.)	1,813.57
Roadway Clear. (min.)	2,663.80
Incident Clearance (min.)	2,671.02
# of Events w/ RR/SIRV	0
RR/SIRV Responses	0
RR/SIRV Activities	0

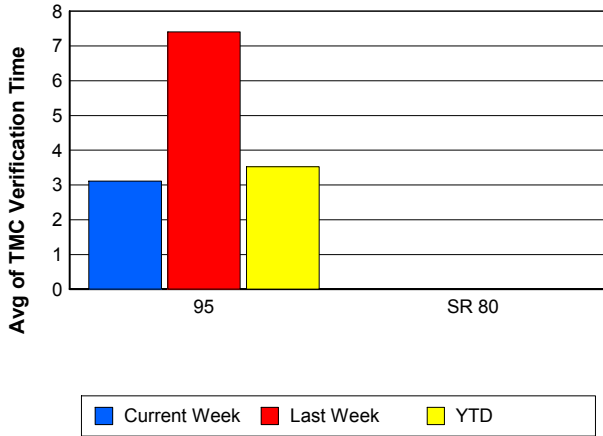
Number of Events / Roadway



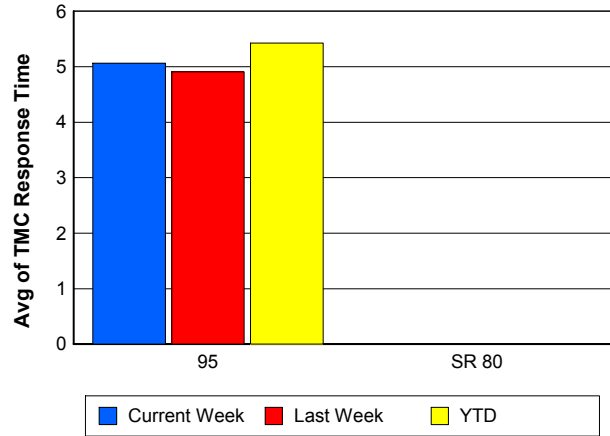
TMC Detection Time



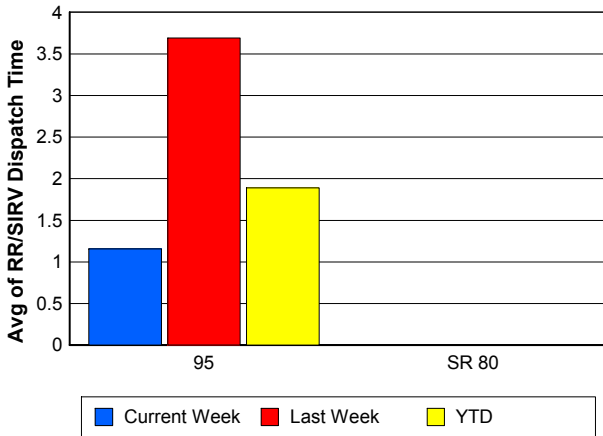
TMC Verification Time



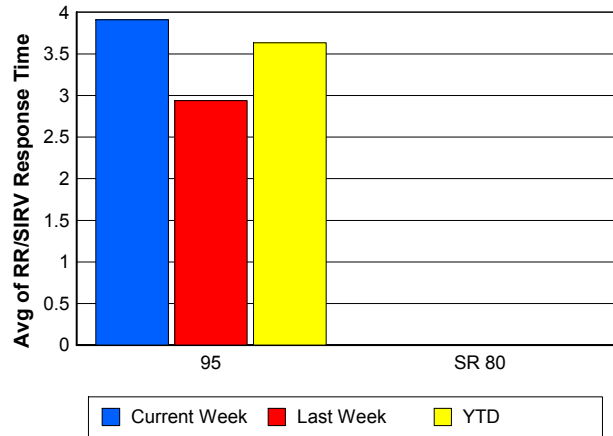
TMC Response Time



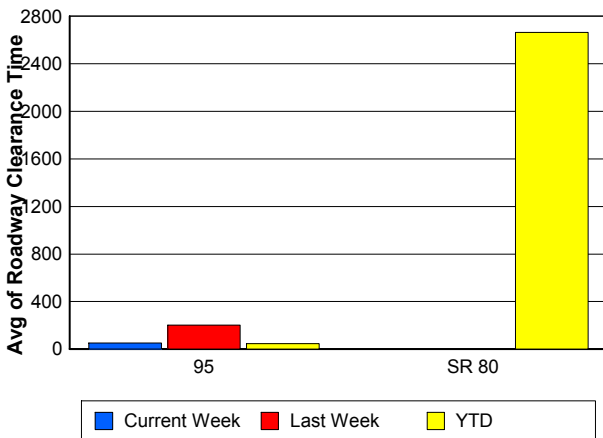
Road Ranger / SIRV Dispatch Time



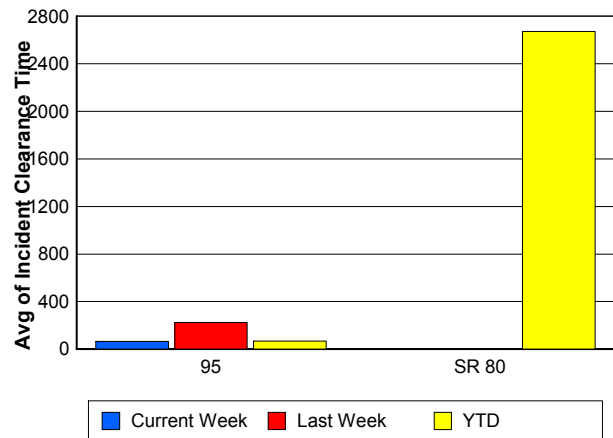
Road Ranger / SIRV Response Time



Roadway Clearance Time (2A)



Incident Clearance Time (3B)



Performance Measures by Event Type

Accident

	<u>Current Week</u>	<u>Last Week</u>	<u>YTD</u>
Number of Events	38	25	724
Number of Incidents	24	9	349
TMC Detection (min.)	0.00	0.00	0.01
TMC Verification (min.)	3.38	2.36	3.53
TMC Response (min.)	7.45	6.26	8.30
RR Dispatch Time (min.)	2.90	1.89	3.46
RR Response Time (min.)	4.55	4.36	4.84
Event Clearance (min.)	57.86	45.48	57.84
Roadway Clearance (min.)	57.92	28.11	45.59
Incident Clearance (min.)	72.82	47.70	72.31
# of Events w/ RR/SIRV	31	19	564
RR/SIRV Assists	31	19	564
RR/SIRV Activities	36	23	723

Debris on Roadway

	<u>Current Week</u>	<u>Last Week</u>	<u>YTD</u>
Number of Events	16	33	589
Number of Incidents	1	1	25
TMC Detection (min.)	0.00	0.00	0.00
TMC Verification (min.)	8.20	5.13	8.08
TMC Response (min.)	6.53	5.28	8.41
RR Dispatch Time (min.)	0.77	0.74	1.70
RR Response Time (min.)	5.78	4.55	6.72
Event Clearance (min.)	11.87	8.02	12.11
Roadway Clearance (min.)	34.38	14.80	18.04
Incident Clearance (min.)	34.23	14.58	21.83
# of Events w/ RR/SIRV	16	31	578
RR/SIRV Assists	16	31	578
RR/SIRV Activities	16	33	619

Disabled Vehicle

	<u>Current Week</u>	<u>Last Week</u>	<u>YTD</u>
Number of Events	213	240	5,782
Number of Incidents	5	3	109
TMC Detection (min.)	0.00	0.00	0.00
TMC Verification (min.)	2.67	2.84	3.26
TMC Response (min.)	4.27	3.40	4.40
RR Dispatch Time (min.)	0.81	3.06	1.46
RR Response Time (min.)	3.46	2.48	3.07
Event Clearance (min.)	17.61	18.10	17.97
Roadway Clearance (min.)	23.18	113.29	23.25
Incident Clearance (min.)	30.20	131.18	33.79
# of Events w/ RR/SIRV	184	220	5,276
RR/SIRV Assists	184	220	5,276
RR/SIRV Activities	207	240	5,791

Emergency Vehicles

	<u>Current Week</u>	<u>YTD</u>
Number of Events	1	12
Number of Incidents	1	6
TMC Detection (min.)	0.00	0.00
TMC Verification (min.)	0.00	1.15
TMC Response (min.)		9.08
RR Dispatch Time (min.)		3.89
RR Response Time (min.)		4.43
Event Clearance (min.)	10.55	36.63
Roadway Clearance (min.)	4.07	21.83
Incident Clearance (min.)	10.55	25.97
# of Events w/ RR/SIRV	0	5
RR/SIRV Assists	0	5
RR/SIRV Activities	0	6

Other

	<u>Current Week</u>	<u>Last Week</u>	<u>YTD</u>
Number of Events	12	13	599
Number of Incidents	0	0	6
TMC Detection (min.)	0.00	0.00	0.00
TMC Verification (min.)	1.06	1.62	1.20
TMC Response (min.)	6.97	10.47	19.99
RR Dispatch Time (min.)	3.32	1.44	10.30
RR Response Time (min.)	3.18	9.03	7.95
Event Clearance (min.)	12.65	58.59	38.76
Roadway Clearance (min.)			38.11
Incident Clearance (min.)			52.15
# of Events w/ RR/SIRV	6	2	136
RR/SIRV Assists	6	2	136
RR/SIRV Activities	5	2	119

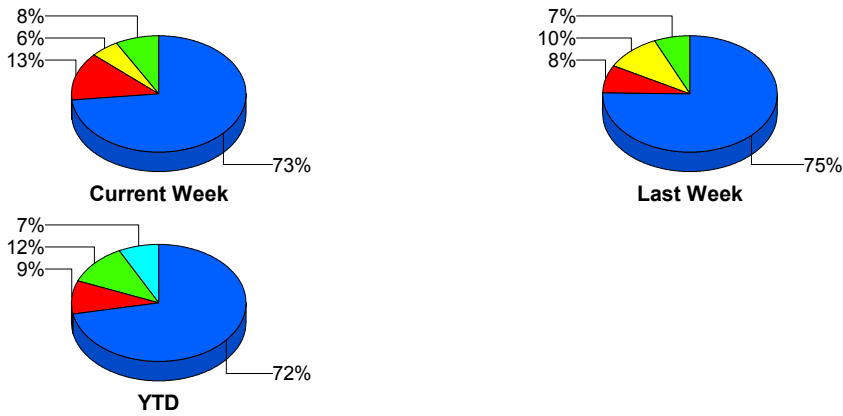
Police Activity

	<u>Current Week</u>	<u>Last Week</u>	<u>YTD</u>
Number of Events	8	5	304
Number of Incidents	1	1	27
TMC Detection (min.)	0.00	1.31	0.04
TMC Verification (min.)	6.15	0.00	0.32
TMC Response (min.)	49.17		11.53
RR Dispatch Time (min.)	6.43		6.36
RR Response Time (min.)	42.73		5.17
Event Clearance (min.)	42.96	109.75	26.60
Roadway Clearance (min.)	196.85	446.10	84.78
Incident Clearance (min.)	211.18	467.30	118.54
# of Events w/ RR/SIRV	1	0	24
RR/SIRV Assists	1	0	24
RR/SIRV Activities	1	0	27

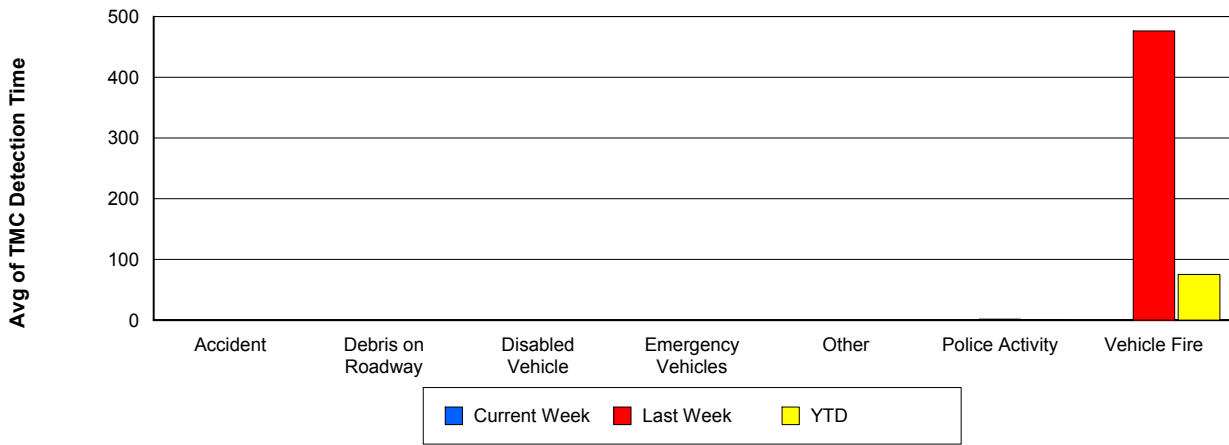
Vehicle Fire

	<u>Current Week</u>	<u>Last Week</u>	<u>YTD</u>
Number of Events	2	3	19
Number of Incidents	1	3	13
TMC Detection (min.)	0.00	476.24	75.20
TMC Verification (min.)	6.70	476.24	77.39
TMC Response (min.)	6.69	286.22	31.43
RR Dispatch Time (min.)	0.76	272.65	25.64
RR Response Time (min.)	5.93	13.57	5.80
Event Clearance (min.)	32.85	836.98	182.40
Roadway Clearance (min.)	5.92	791.24	207.76
Incident Clearance (min.)	36.38	836.98	246.33
# of Events w/ RR/SIRV	2	1	11
RR/SIRV Assists	2	1	11
RR/SIRV Activities	3	3	16

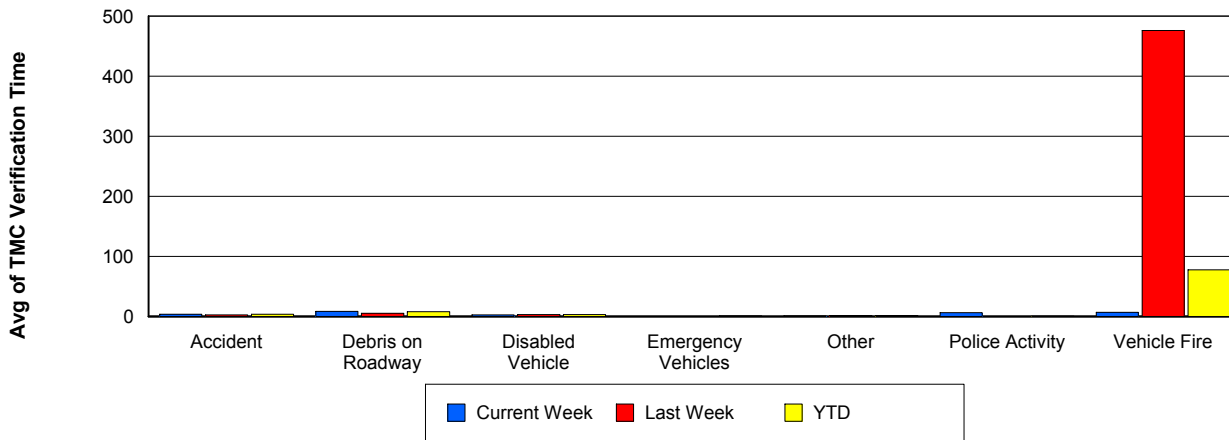
Number of Events / Event Type



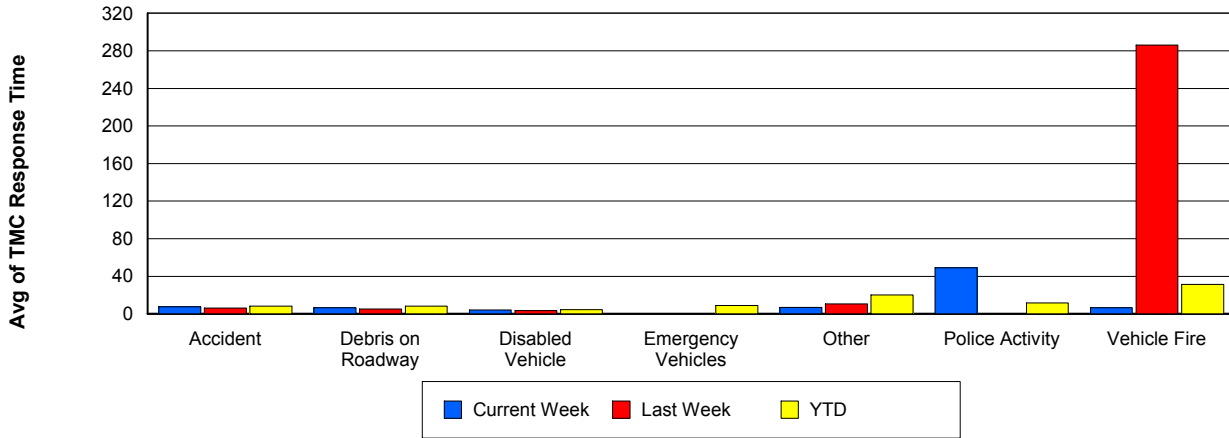
TMC Detection Time



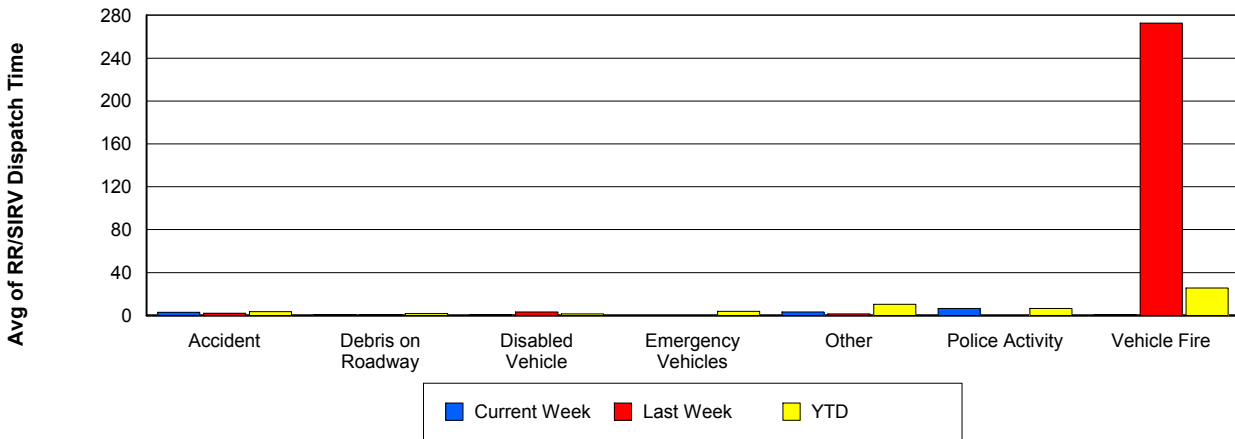
TMC Verification Time



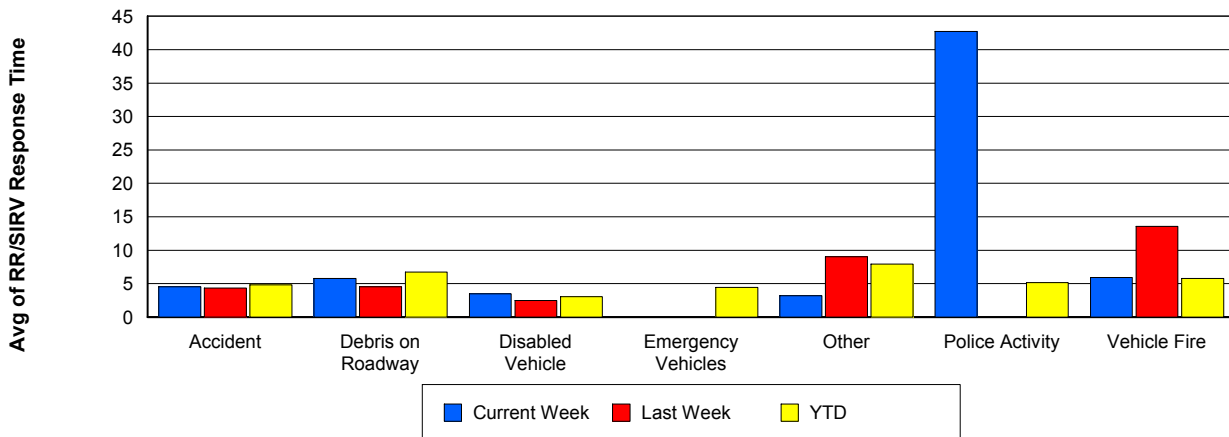
TMC Response Time



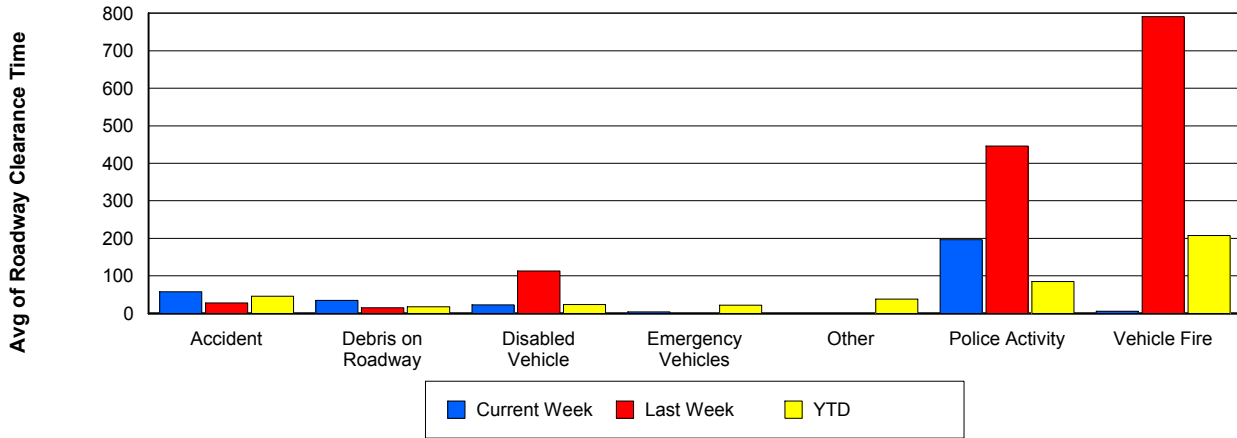
Road Ranger / SIRV Dispatch Time



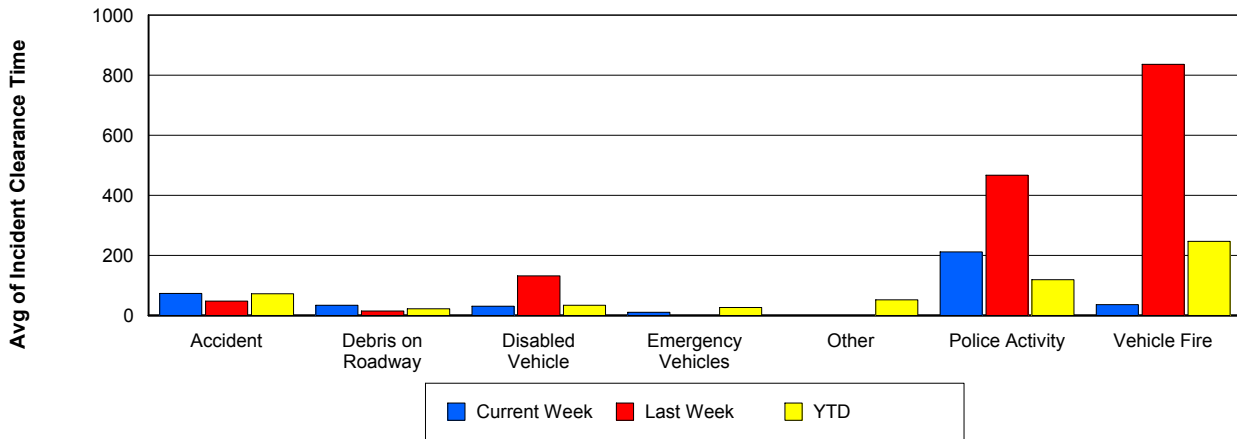
Road Ranger / SIRV Response Time



Roadway Clearance Time (2A)



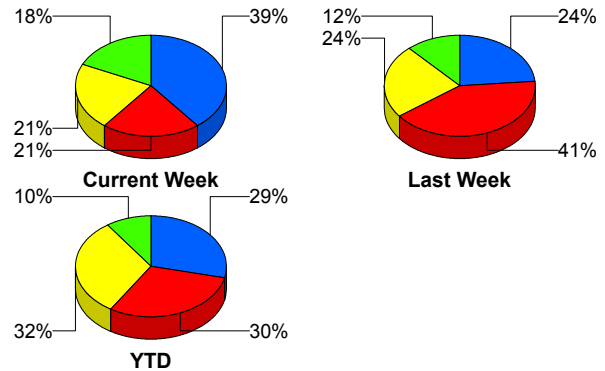
Incident Clearance Time (3B)



Incident Detection Methods

	Current Week	Last Week	YTD
Broward CCTV	0	0	6
Broward Road Ranger	0	1	6
Construction CEI	0	0	1
District 4	2	1	13
Emergency Operations	0	0	1
FHP	13	4	153
I-95 Construction PIO	0	0	2
ITMS	1	0	5
ITMS CCTV	7	7	162
Local Police	0	0	1
Media	2	0	2
Motorist	1	0	10
Palm Beach Road Ran	7	4	169
Road Watcher	0	0	1
SmarTraveler (511)	0	0	4
Total	33	17	536

Total Incidents by Detection Method



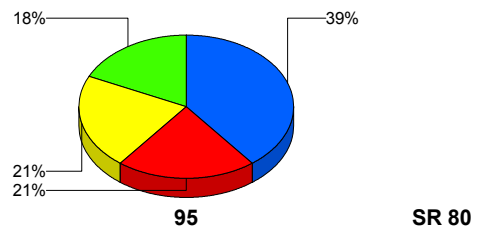
■ FHP
 ■ ITMS CCTV
 ■ Palm Beach Road Ranger
 ■ Others

Incident Detection Methods by Roadway

		Current Week	Last Week	YTD
95	Broward CCTV	0	0	6
	Broward Road Ranger	0	1	6
	Construction CEI	0	0	1
	District 4	2	1	13
	FHP	13	4	152
	I-95 Construction PIO	0	0	2
	ITMS	1	0	5
	ITMS CCTV	7	7	162
	Local Police	0	0	1
	Media	2	0	2
	Motorist	1	0	10

Total Events by Roadway and Detection Method

Current Period Only



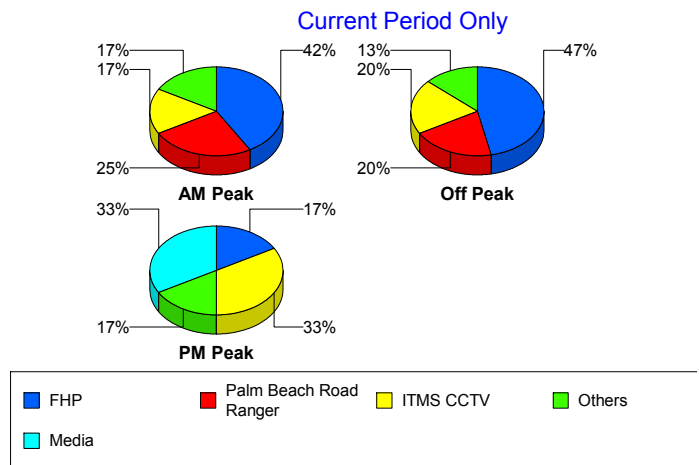
■ FHP
 ■ ITMS CCTV
 ■ Palm Beach Road Ranger
 ■ Others
 ■ Broward TMC
 ■ Emergency Operations Center (EOC)

		Current Week	Last Week	YTD
95	Palm Beach Road Ran	7	4	169
	Road Watcher	0	0	1
	SmarTraveler (511)	0	0	4
	Total	33	17	534
SR 80	Emergency Operations	0	0	1
	FHP	0	0	1
	Total	0	0	2
Total		33	17	536

Incident Detection Methods by Peak Period

		Current Week	Last Week	YTD
AM Peak	Broward CCTV	0	0	2
	Broward Road Ranger	0	0	3
	District 4	0	1	8
	FHP	5	1	57
	ITMS	1	0	3
	ITMS CCTV	2	0	24
	Motorist	1	0	5
	Palm Beach Road Ran	3	0	58
	Road Watcher	0	0	1
	SmarTraveler (511)	0	0	3
	Total	12	2	164
	Off Peak	Broward CCTV	0	0
Broward Road Ranger		0	0	1
Construction CEI		0	0	1
District 4		2	0	5
FHP		7	3	69
I-95 Construction PIO		0	0	2
ITMS		0	0	2
ITMS CCTV		3	6	81
Motorist		0	0	2
Palm Beach Road Ran		3	2	60

Total Events by Peak Period and Detection Method

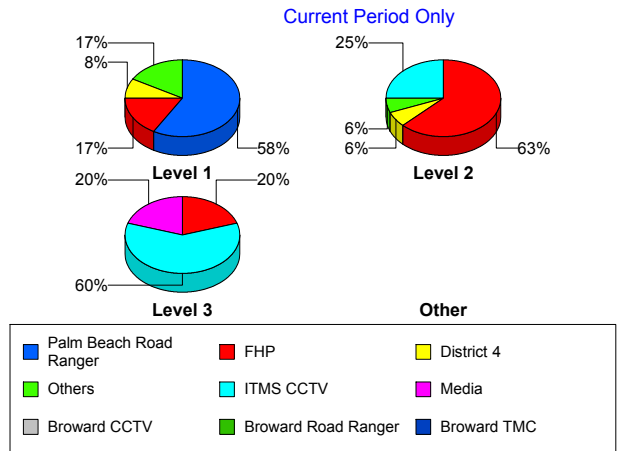


		Current Week	Last Week	YTD
Off Peak	SmarTraveler (511)	0	0	1
	Total	15	11	228
PM Peak	Broward Road Ranger	0	1	2
	Emergency Operations	0	0	1
	FHP	1	0	27
	ITMS CCTV	2	1	57
	Local Police	0	0	1
	Media	2	0	2
	Motorist	0	0	3
	Palm Beach Road Ran	1	2	51
	Total	6	4	144
	Total	33	17	536

Incident Detection Methods by Severity

		Current Week	Last Week	YTD
Level 1	Broward CCTV	0	0	4
	Broward Road Ranger	0	1	4
	District 4	1	1	10
	FHP	2	1	65
	I-95 Construction PIO	0	0	1
	ITMS	1	0	2
	ITMS CCTV	0	2	65
	Local Police	0	0	1
	Motorist	1	0	7
	Palm Beach Road Ran	7	3	124
	Road Watcher	0	0	1
	SmarTraveler (511)	0	0	1
	Total	12	8	285
	Level 2	Broward Road Ranger	0	0
District 4		1	0	3
FHP		10	3	68
I-95 Construction PIO		0	0	1

Total Events by Severity and Detection Method



		Current Week	Last Week	YTD
Level 2	ITMS	0	0	3
	ITMS CCTV	4	1	67
	Media	1	0	1
	Motorist	0	0	2
	Palm Beach Road Ran	0	0	35
	SmarTraveler (511)	0	0	3
	Total	16	4	185
Level 3	Broward CCTV	0	0	2
	Construction CEI	0	0	1
	Emergency Operations	0	0	1
	FHP	1	0	20
	ITMS CCTV	3	4	30
	Media	1	0	1
	Motorist	0	0	1
	Palm Beach Road Ran	0	1	10
	Total	5	5	66
Total	33	17	536	

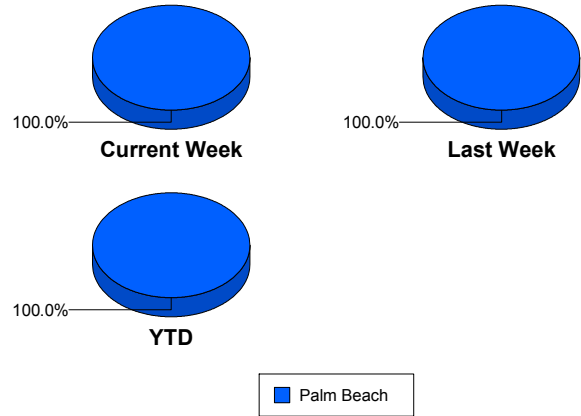
Road Ranger / SIRV Performance Measures

Road Ranger / SIRV Performance By County

Values presented are:
 - Total Events with a RR/SIRV Response
 - Total RR/SIRV Responses,
 - Total Activities Performed

	Current We	Last Week	YTD
Palm Beach	301	360	8,615
	316	373	8,901
	339	392	9,493

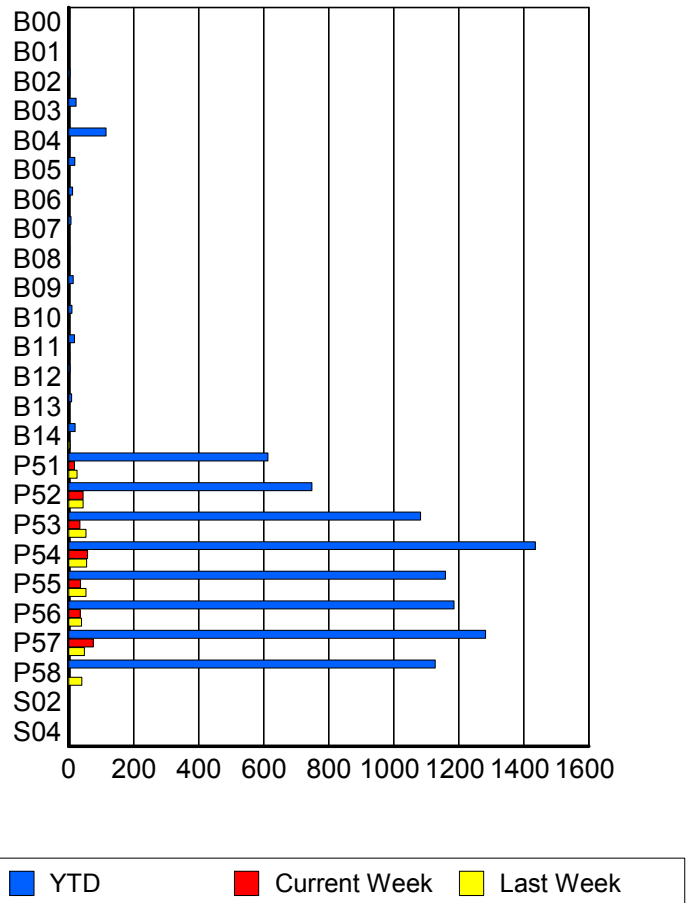
RR/SIRV Responses per County



Road Ranger / SIRV Performance By Truck

	Current We	Last Week	YTD
B00	0	0	3
	0	0	3
	0	0	3
B01	0	0	1
	0	0	1
	0	0	1
B02	0	0	4
	0	0	4
	0	0	4
B03	2	0	23
	2	0	23
	2	0	24
B04	3	3	114
	3	3	115
	4	3	132
B05	0	0	18
	0	0	19
	0	0	20
B06	0	0	12
	0	0	12
	0	0	12
B07	0	0	7
	0	0	7
	0	0	7
B08	0	0	3
	0	0	3
	0	0	3

RR/SIRV Responses per Truck



	Current We	Last Week	YTD
B09	0	1	14
	0	1	14
	0	1	14
B10	1	0	9
	2	0	10
	2	0	10
B11	0	3	18
	0	3	18
	0	3	19
B12	0	1	4
	0	1	4
	0	1	4
B13	0	0	9
	0	0	9
	0	0	10
B14	1	4	20
	1	4	20
	1	4	21
P51	18	25	607
	18	26	613
	20	27	643
P52	45	45	744
	45	45	748
	48	45	792
P53	34	53	1,070
	35	53	1,083
	39	54	1,153
P54	57	55	1,421
	58	55	1,436
	62	60	1,538
P55	37	53	1,150
	37	53	1,159
	41	56	1,237
P56	36	37	1,170
	36	40	1,186
	37	43	1,275
P57	74	46	1,272
	76	48	1,283
	80	49	1,374
P58	3	41	1,114
	3	41	1,128
	3	46	1,194
S02	0	0	1
	0	0	1
	0	0	1

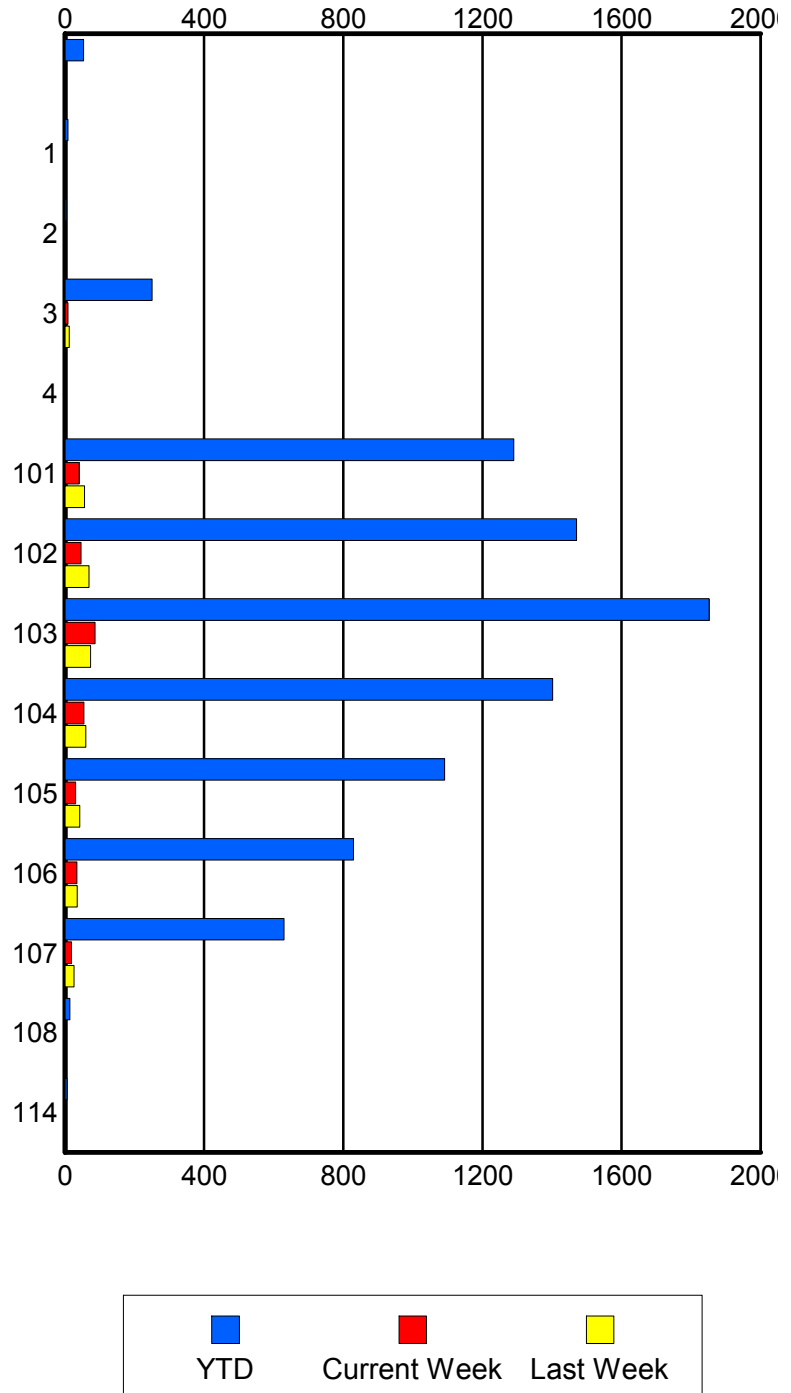
	Current We	Last Week	YTD
S04	0	0	2
	0	0	2
	0	0	2

Road Ranger / SIRV Performance By Beat

	Current We	Last Week	YTD
	0	0	53
	0	0	53
	0	0	53
1	0	0	8
	0	0	8
	0	0	9
2	0	0	4
	0	0	4
	0	0	5
3	7	12	246
	8	12	250
	9	12	270
4	0	0	1
	0	0	1
	0	0	1
101	40	55	1,275
	40	56	1,290
	44	60	1,388
102	46	69	1,456
	46	69	1,471
	48	74	1,561
103	84	72	1,829
	86	73	1,852
	92	76	1,988
104	53	59	1,388
	54	60	1,402
	57	61	1,498
105	29	42	1,082
	30	42	1,091
	34	45	1,161
106	32	33	817
	34	35	829
	35	37	882
107	18	25	624
	18	26	630
	20	27	657
108	0	0	13
	0	0	14
	0	0	14
114	0	0	6
	0	0	6
	0	0	6

Values presented are:
 - Total Events with a RR/SIRV Response
 - Total RR/SIRV Responses,
 - Total Activities Performed

RR/SIRV Responses per Beat

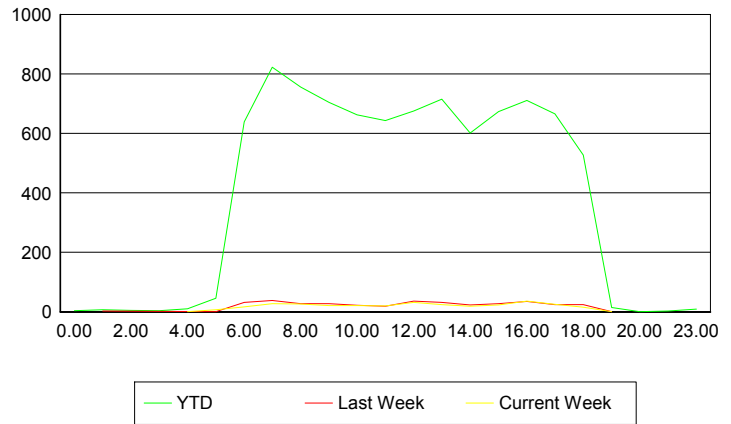


Road Ranger / SIRV Performance By Time of Day

Values presented are:
 - Total Events with a RR/SIRV Response
 - Total RR/SIRV Responses,
 - Total Activities Performed

	Current We	Last Week	YTD
12AM-1AM	0 0 0	0 0 0	4 4 4
1AM-2AM	0 0 0	1 3 3	5 7 7
2AM-3AM	0 0 0	0 0 0	5 5 6
3AM-4AM	0 0 0	0 0 0	4 4 4
4AM-5AM	1 1 1	0 0 0	7 10 11
5AM-6AM	6 7 7	1 1 2	43 46 48
6AM-7AM	16 17 17	32 32 32	614 639 670
7AM-8AM	27 27 31	34 38 40	788 823 882
8AM-9AM	25 26 27	28 28 28	730 756 811
9AM-10AM	20 21 24	26 27 29	682 705 771
10AM-11AM	20 21 23	20 22 24	641 663 700
11AM-12PM	18 20 21	18 19 19	622 643 694
12PM-1PM	31 32 35	35 36 41	653 675 723

Number of Responses / Hour of the Day



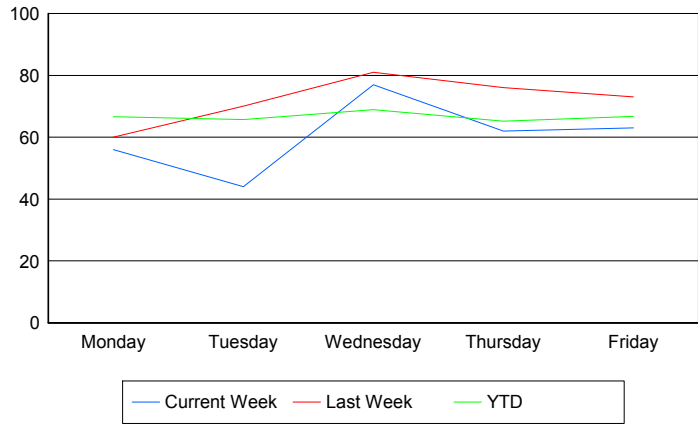
	Current We	Last Week	YTD
1PM-2PM	23	31	699
	24	32	715
	27	33	776
2PM-3PM	18	22	578
	19	23	601
	20	23	634
3PM-4PM	22	28	652
	23	28	673
	24	30	720
4PM-5PM	35	35	692
	36	35	711
	38	38	746
5PM-6PM	22	24	646
	25	24	666
	26	24	699
6PM-7PM	16	24	523
	16	24	527
	17	25	558
7PM-8PM	1	1	15
	1	1	15
	1	1	16
8PM-9PM	0	0	1
	0	0	1
	0	0	1
10PM-11PM	0	0	3
	0	0	3
	0	0	3
11PM-12AM	0	0	8
	0	0	9
	0	0	9

Road Ranger / SIRV Performance By Day of Week

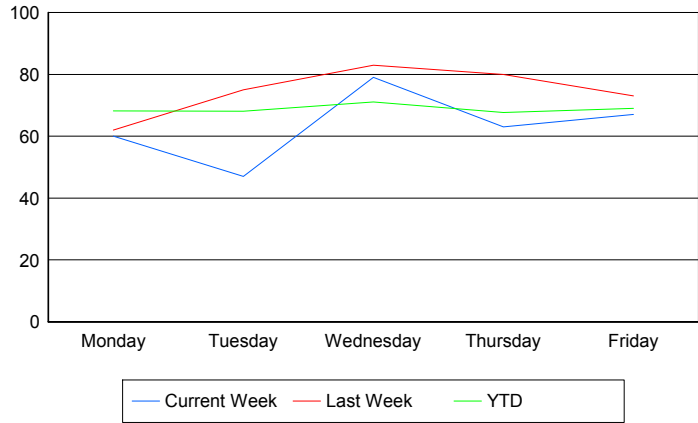
Values presented are:
 - Total Events with a RR/SIRV Response
 - Total RR/SIRV Responses,
 - Total Activities Performed

	Current We	Last Week	YTD
Monday	56	60	1,690
	60	62	1,731
	64	63	1,829
Tuesday	44	70	1,675
	47	75	1,734
	51	78	1,841
Wednesday	77	81	1,766
	79	83	1,822
	81	90	1,956
Thursday	62	76	1,721
	63	80	1,788
	71	87	1,922
Friday	63	73	1,766
	67	73	1,826
	72	74	1,945

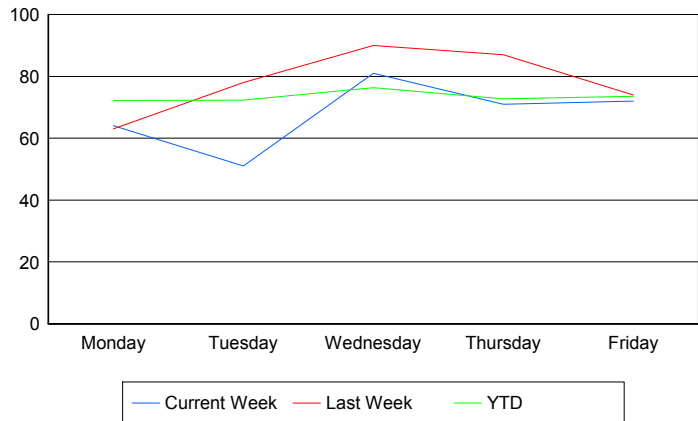
Avg # of events with a RR/SIRV Response per Day of the Week



Avg # of RR/SIRV Responses per Day of the Week



Avg # of RR/SIRV Activities Performed per Day of the Week



Road Ranger / SIRV Responses per Time of Day and Day of Week

