



Weekly Performance Measures Report Palm Beach County



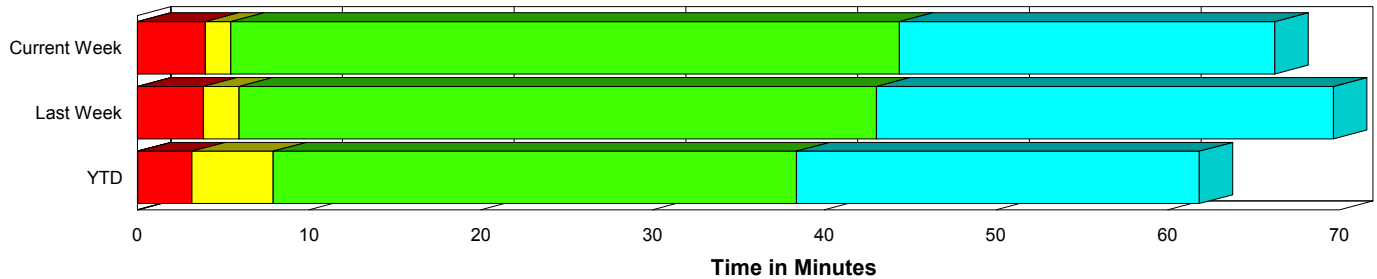
Created on:
August 23, 2009
1:54 pm

Period From Aug 16, 2009 to Aug 22, 2009

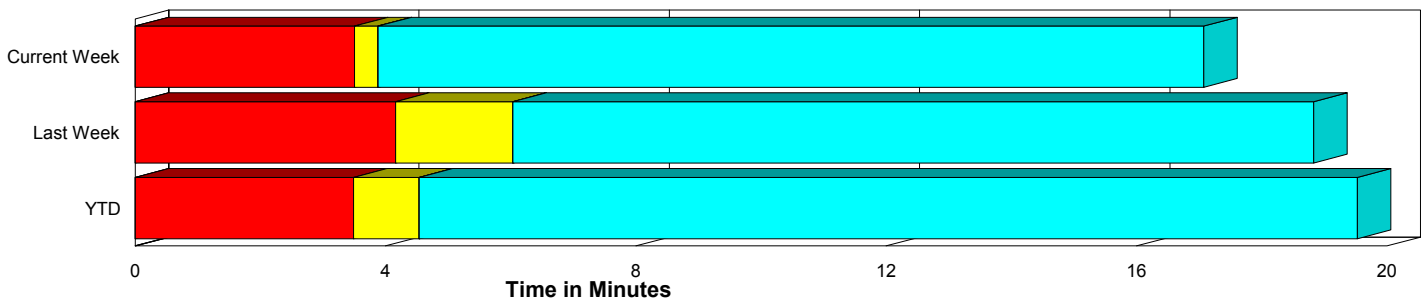
Performance Measures Summary

	Traffic Events (No Lanes Blocked)			Incidents (Lanes Blocked)		
	<u>This Week</u>	<u>Last Week</u>	<u>YTD</u>	<u>This Week</u>	<u>Last Week</u>	<u>YTD</u>
Number of Events	286	306	9,644	31	15	689
TMC Detection (min.)	0.00	0.00	0.00	0.00	0.00	0.02
TMC Verification (min.)	3.51	4.16	3.49	3.97	3.85	3.15
TMC Response (min.)	4.27	6.33	5.25	7.78	7.33	8.65
RR Dispatch Time (min.)	1.41	2.87	1.78	2.74	2.45	4.31
RR Response Time (min.)	2.98	3.53	3.56	5.04	4.88	4.33
Roadway Clearance (min.)				39.40	36.95	50.09
Event Clearance (min.)	17.47	19.13	20.24	61.17	63.44	73.17
# of Events w/ RR/SIRV	250	284	8,067	18	11	520
RR/SIRV Responses	250	284	8,067	18	11	520
RR/SIRV Activities	278	303	8,794	25	19	759

Incident Clearance Time-Line



Traffic Event (Non-Lane Blockage) Time-Line



■ Avg. TMC Detection Time	■ Avg. Time from TMC Response to Roadway Clearance*
■ Avg. Time from TMC Detection to TMC Verification	■ Avg. Time from Roadway Clearance to Incident/Event Clearance**
■ Avg. Time from TMC Verification to TMC Response	

* Roadway clearance equals all travel lanes open

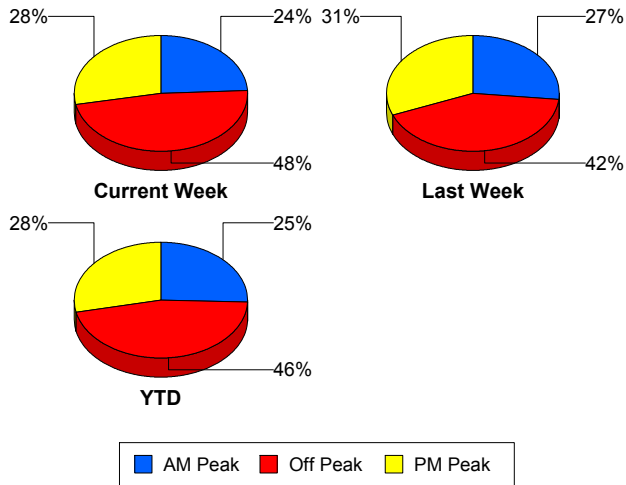
** Incident clearance equals time when last responder has left the scene

Performance Measures by Peak Period

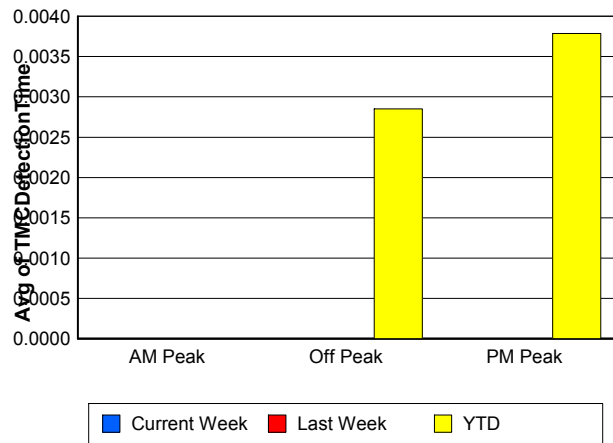
Note: AM peak period is defined as 6am to 10am and PM peak period is defined as 3pm to 7pm.

	AM Peak			Off Peak			PM Peak		
	<u>Current Week</u>	<u>Last Week</u>	<u>YTD</u>	<u>Current Week</u>	<u>Last Week</u>	<u>YTD</u>	<u>Current Week</u>	<u>Last Week</u>	<u>YTD</u>
Number of Events	77	86	2,628	151	135	4,788	89	100	2,917
Number of Incidents	11	1	207	17	8	296	3	6	186
TMC Detection (min.)	0.00	0.00	0.00	0.00	0.00	0.00	0.00	0.00	0.00
TMC Verification (min.)	3.17	2.87	3.06	2.60	3.83	3.07	5.51	5.67	4.48
TMC Response (min.)	3.84	3.28	4.21	3.98	8.00	6.48	5.78	7.14	5.35
RR Dispatch Time (min.)	1.17	0.62	1.12	1.55	5.09	2.98	1.71	2.12	1.39
RR Response Time (min.)	2.68	2.69	3.12	2.45	3.04	3.67	4.36	5.02	3.98
Event Clearance (min.)	22.62	16.59	21.93	23.03	23.58	26.01	18.79	21.94	21.75
Roadway Clearance (min.)	52.10	45.80	39.12	29.96	34.02	51.14	46.33	39.38	60.62
Incident Clearance (min.)	74.89	49.78	64.52	50.80	55.35	75.01	69.65	76.51	79.85
# of Events w/ RR/SIRV	73	85	2,507	109	116	3,356	86	94	2,724
RR/SIRV Responses	73	85	2,507	109	116	3,356	86	94	2,724
RR/SIRV Activities	84	91	2,852	122	130	3,728	97	101	2,973

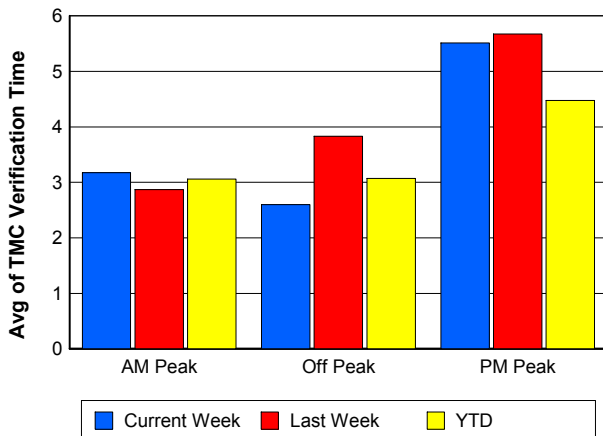
Number of Events / Peak Period



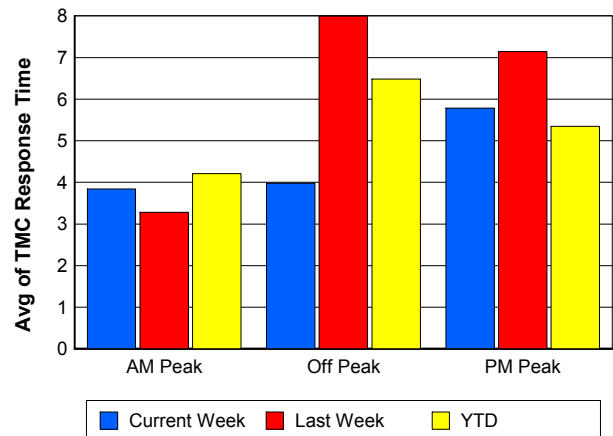
TMC Detection Time



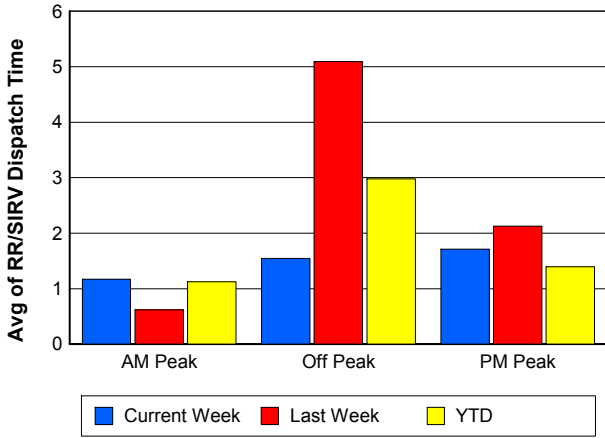
TMC Verification Time



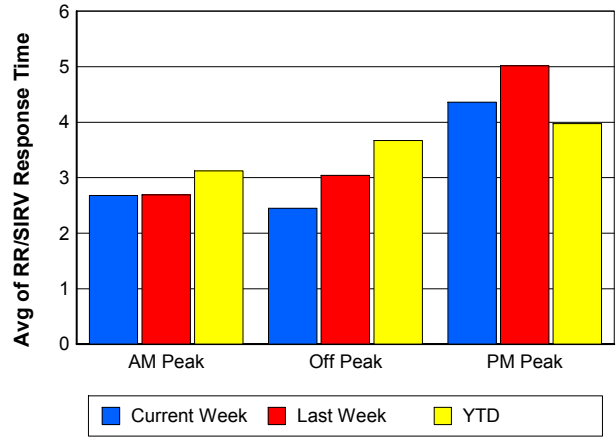
TMC Response Time



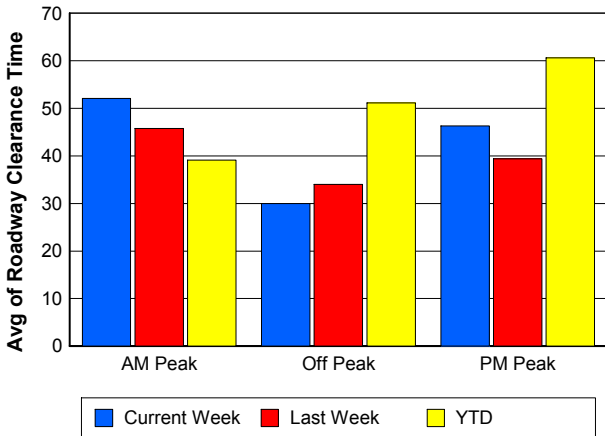
Road Ranger / SIRV Dispatch Time



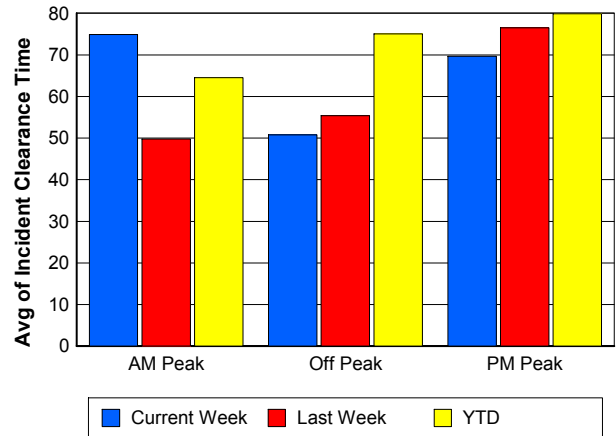
Road Ranger / SIRV Response Time



Roadway Clearance Time (2A)



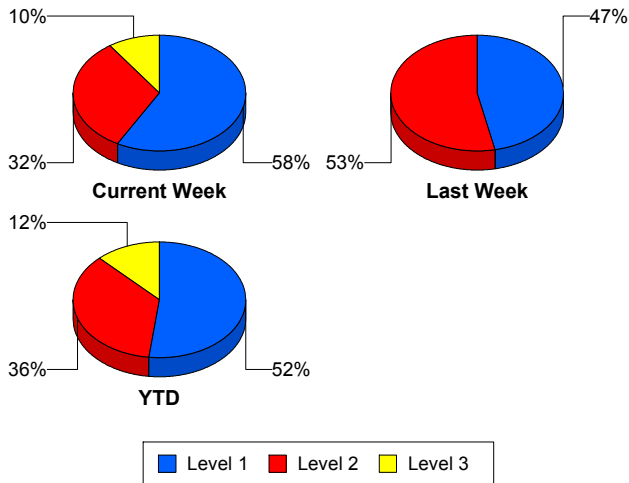
Incident Clearance Time (3B)



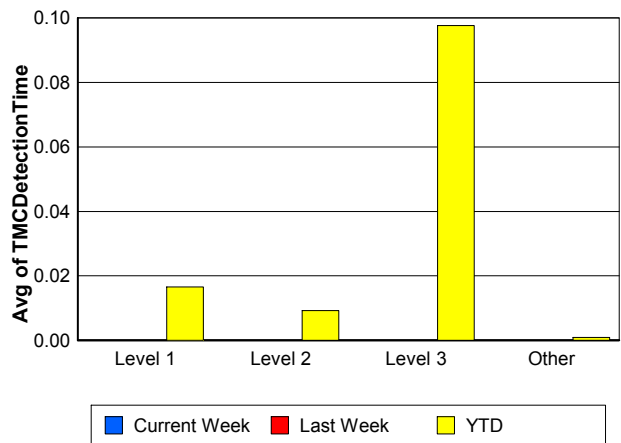
Performance Measures by Severity

	Level 1			Level 2			Level 3		Other		
	<u>This Week</u>	<u>Last Week</u>	<u>YTD</u>	<u>This Week</u>	<u>Last Week</u>	<u>YTD</u>	<u>This Week</u>	<u>YTD</u>	<u>This Week</u>	<u>Last Week</u>	<u>YTD</u>
Number of Events	18	7	357	10	8	248	3	84	286	306	9,644
Number of Incidents	18	7	357	10	8	248	3	84	0	0	0
TMC Detection (min.)	0.00	0.00	0.02	0.00	0.00	0.01	0.00	0.10	0.00	0.00	0.00
TMC Verification (min.)	1.29	3.13	2.06	9.68	4.48	4.31	0.99	4.43	3.51	4.16	3.49
TMC Response (min.)	2.75	7.29	4.04	13.61	7.34	8.83	6.43	35.07	4.27	6.33	5.25
RR Dispatch Time (min.)	1.82	0.38	1.14	3.48	3.23	2.98	5.10	27.77	1.41	2.87	1.78
RR Resp. Time (min.)	0.93	6.92	2.92	10.13	4.11	5.85	1.33	7.29	2.98	3.53	3.56
Event Clearance (min.)	49.79	61.55	40.59	66.68	65.10	73.35	111.10	211.05	17.47	19.13	20.24
Roadway Clear. (min.)	15.86	17.15	14.52	62.09	54.27	53.77	105.04	190.35			
Incident Clearance (min.)	49.79	61.55	40.59	66.68	65.10	73.35	111.10	211.05			
# of Events w/ RR/SIRV	9	3	297	8	8	173	1	50	250	284	8,067
RR/SIRV Responses	9	3	297	8	8	173	1	50	250	284	8,067
RR/SIRV Activities	11	5	383	12	14	291	2	85	278	303	8,794

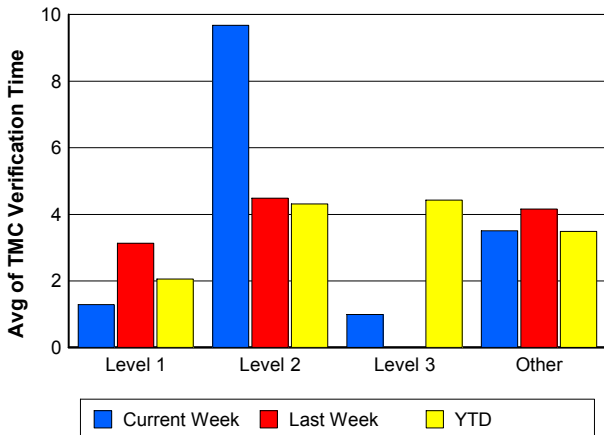
Number of Events / Severity



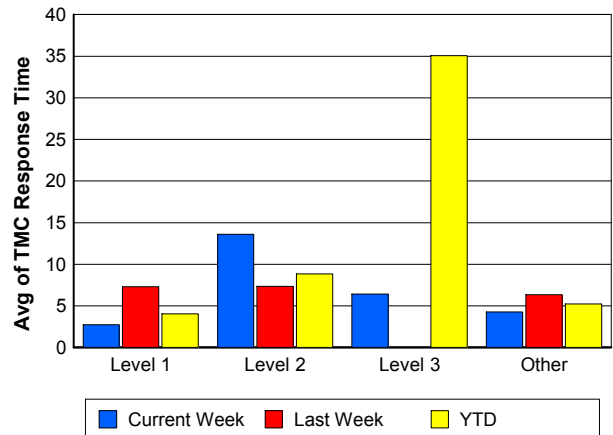
TMC Detection Time



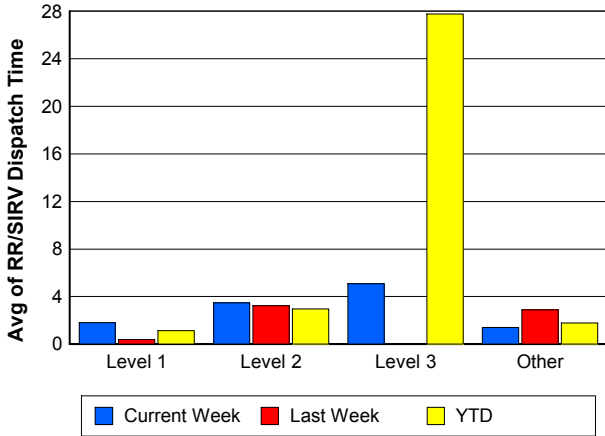
TMC Verification Time



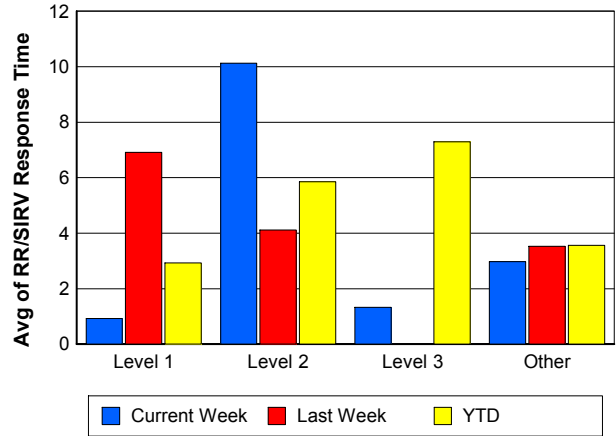
TMC Response Time



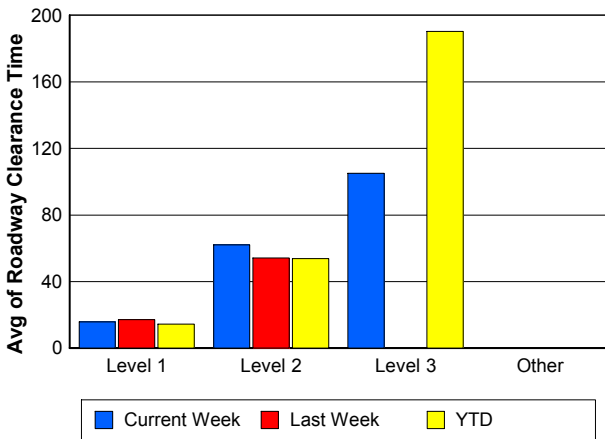
Road Ranger / SIRV Dispatch Time



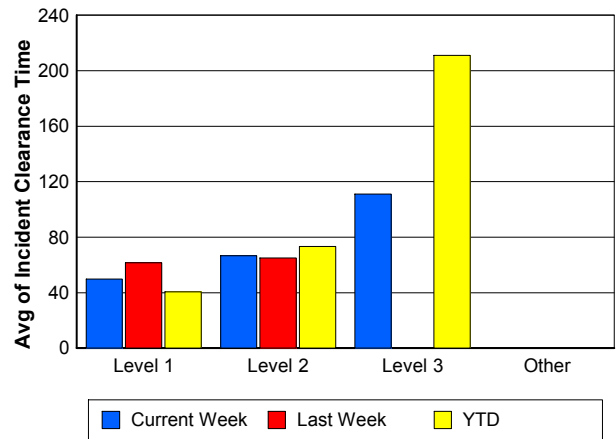
Road Ranger / SIRV Response Time



Roadway Clearance Time (2A)



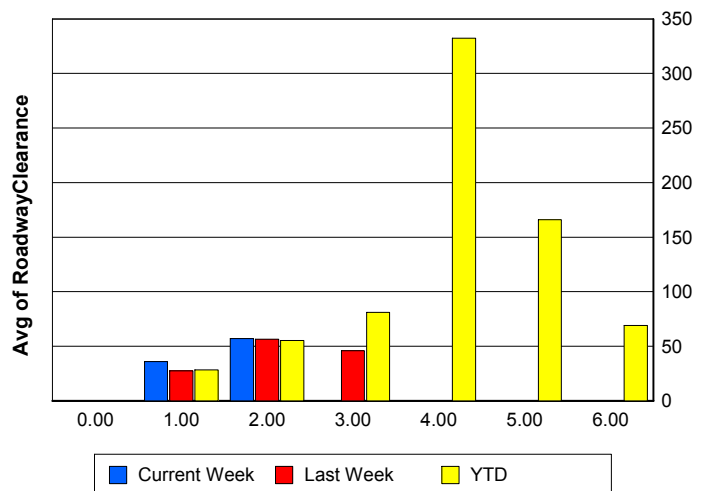
Incident Clearance Time (3B)



Roadway Clearance by Maximum Number of Lanes Blocked

	Current Week	Last Week	YTD
0			
1	35.98	27.51	28.45
2	57.17	56.40	55.27
3	0.00	45.81	81.17
4	0.00	0.00	332.33
5	0.00	0.00	166.12
6	0.00	0.00	69.12

Roadway Clearance Time (2A)



Performance Measures by Roadway

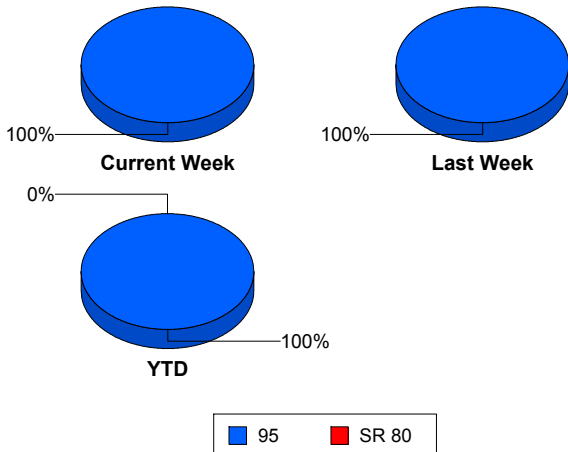
95

	<u>Current Week</u>	<u>Last Week</u>	<u>YTD</u>
Number of Events	317	321	10,329
Number of Incidents	31	15	686
TMC Detection (min.)	0.00	0.00	0.00
TMC Verification (min.)	3.55	4.15	3.47
TMC Response (min.)	4.51	6.37	5.46
RR Dispatch Time (min.)	1.50	2.86	1.94
RR Resp. Time (min.)	3.12	3.58	3.61
Event Clearance (min.)	21.74	21.20	23.23
Roadway Clear. (min.)	39.40	36.95	42.48
Incident Clearance (min.)	61.17	63.44	65.41
# of Events w/ RR/SIRV	268	295	8,587
RR/SIRV Responses	268	295	8,587
RR/SIRV Activities	303	322	9,553

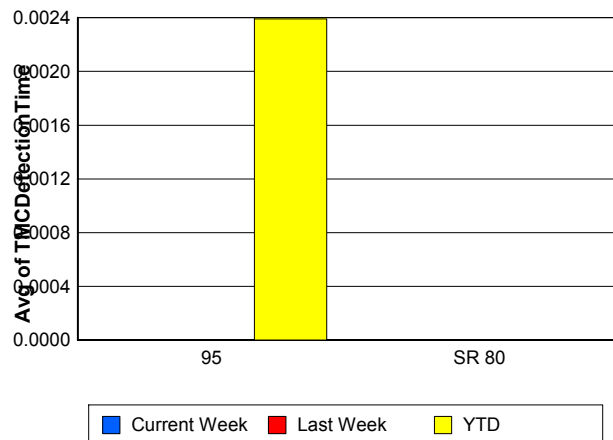
SR 80

	<u>YTD</u>
Number of Events	4
Number of Incidents	3
TMC Detection (min.)	0.00
TMC Verification (min.)	0.00
TMC Response (min.)	
RR Dispatch Time (min.)	
RR Resp. Time (min.)	
Event Clearance (min.)	1,409.98
Roadway Clear. (min.)	1,789.50
Incident Clearance (min.)	1,847.09
# of Events w/ RR/SIRV	0
RR/SIRV Responses	0
RR/SIRV Activities	0

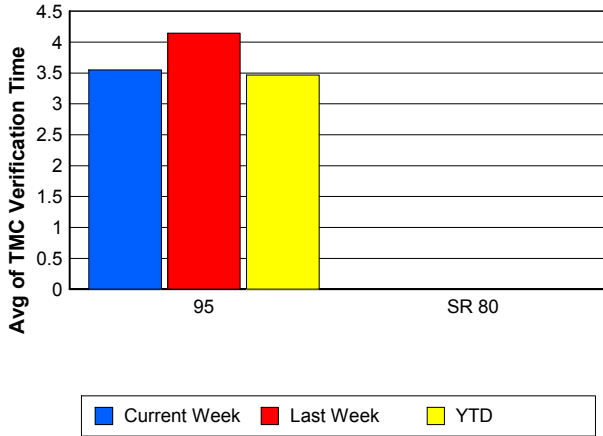
Number of Events / Roadway



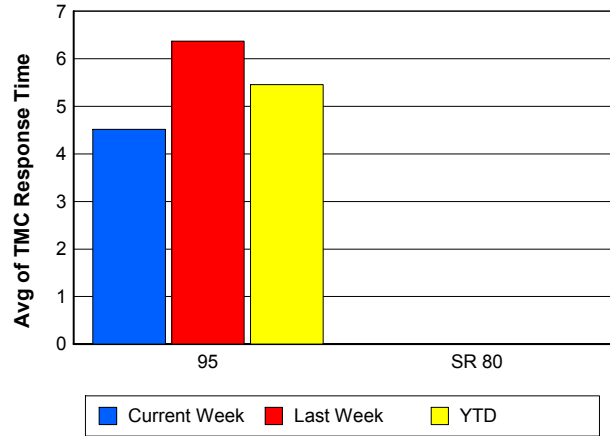
TMC Detection Time



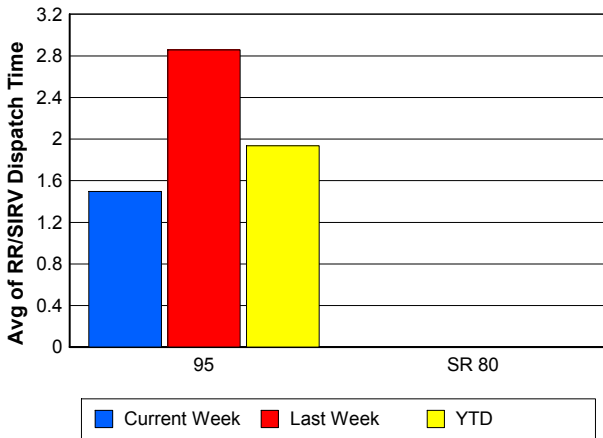
TMC Verification Time



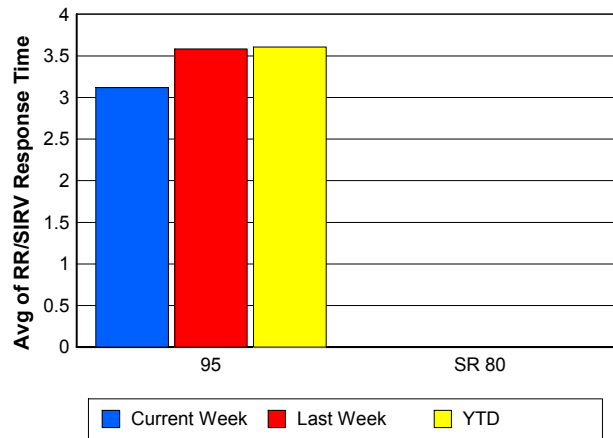
TMC Response Time



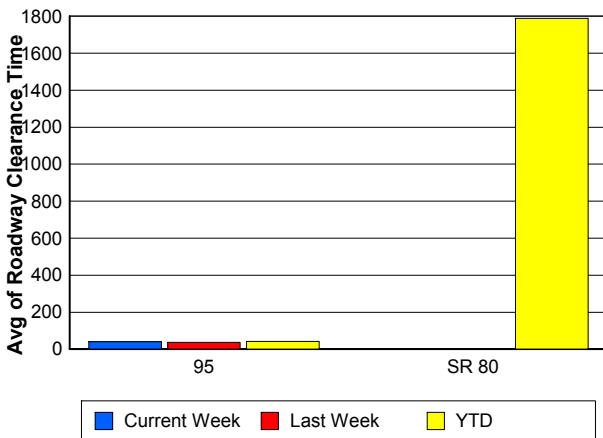
Road Ranger / SIRV Dispatch Time



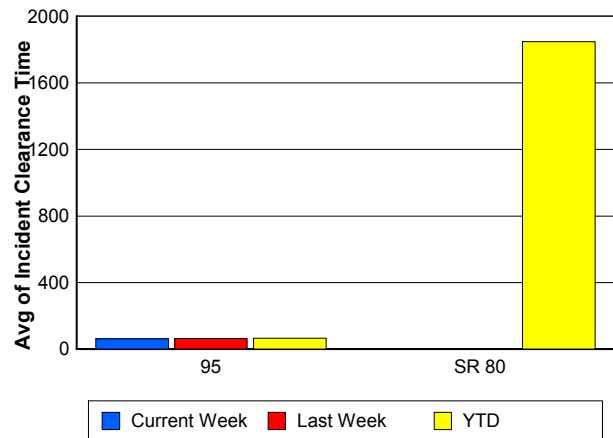
Road Ranger / SIRV Response Time



Roadway Clearance Time (2A)



Incident Clearance Time (3B)



Performance Measures by Event Type

Accident

	<u>Current Week</u>	<u>Last Week</u>	<u>YTD</u>
Number of Events	33	24	922
Number of Incidents	24	12	457
TMC Detection (min.)	0.00	0.00	0.01
TMC Verification (min.)	4.35	4.32	3.79
TMC Response (min.)	6.24	5.83	8.03
RR Dispatch Time (min.)	1.73	2.17	3.11
RR Response Time (min.)	4.51	3.66	4.92
Event Clearance (min.)	59.90	59.25	59.26
Roadway Clearance (min.)	37.97	36.37	45.59
Incident Clearance (min.)	62.93	68.56	73.30
# of Events w/ RR/SIRV	21	18	710
RR/SIRV Assists	21	18	710
RR/SIRV Activities	28	24	909

Debris on Roadway

	<u>Current Week</u>	<u>Last Week</u>	<u>YTD</u>
Number of Events	20	33	776
Number of Incidents	0	1	31
TMC Detection (min.)	0.00	0.00	0.00
TMC Verification (min.)	4.35	5.59	7.63
TMC Response (min.)	4.03	6.05	7.90
RR Dispatch Time (min.)	0.46	1.21	1.70
RR Response Time (min.)	3.57	4.84	6.21
Event Clearance (min.)	6.85	9.04	11.87
Roadway Clearance (min.)		27.80	21.08
Incident Clearance (min.)		26.75	23.69
# of Events w/ RR/SIRV	19	33	762
RR/SIRV Assists	19	33	762
RR/SIRV Activities	20	35	819

Disabled Vehicle

	<u>Current Week</u>	<u>Last Week</u>	<u>YTD</u>
Number of Events	243	243	7,479
Number of Incidents	5	1	134
TMC Detection (min.)	0.00	0.00	0.00
TMC Verification (min.)	3.61	4.16	3.37
TMC Response (min.)	4.39	6.54	4.54
RR Dispatch Time (min.)	1.59	3.22	1.56
RR Response Time (min.)	2.93	3.40	3.09
Event Clearance (min.)	16.72	19.68	18.12
Roadway Clearance (min.)	56.46	45.43	24.73
Incident Clearance (min.)	56.56	45.28	34.59
# of Events w/ RR/SIRV	222	232	6,819
RR/SIRV Assists	222	232	6,819
RR/SIRV Activities	250	251	7,537

Emergency Vehicles

	<u>YTD</u>
Number of Events	14
Number of Incidents	8
TMC Detection (min.)	0.00
TMC Verification (min.)	2.27
TMC Response (min.)	9.04
RR Dispatch Time (min.)	3.11
RR Response Time (min.)	5.54
Event Clearance (min.)	50.12
Roadway Clearance (min.)	46.52
Incident Clearance (min.)	52.24
# of Events w/ RR/SIRV	7
RR/SIRV Assists	7
RR/SIRV Activities	9

Other

	<u>Current Week</u>	<u>Last Week</u>	<u>YTD</u>
Number of Events	13	20	726
Number of Incidents	0	0	7
TMC Detection (min.)	0.00	0.00	0.00
TMC Verification (min.)	0.76	1.67	1.32
TMC Response (min.)	4.52	4.66	19.03
RR Dispatch Time (min.)	0.83	1.30	10.03
RR Response Time (min.)	4.27	3.43	7.33
Event Clearance (min.)	31.87	12.26	39.13
Roadway Clearance (min.)			40.35
Incident Clearance (min.)			52.93
# of Events w/ RR/SIRV	4	11	196
RR/SIRV Assists	4	11	196
RR/SIRV Activities	3	10	174

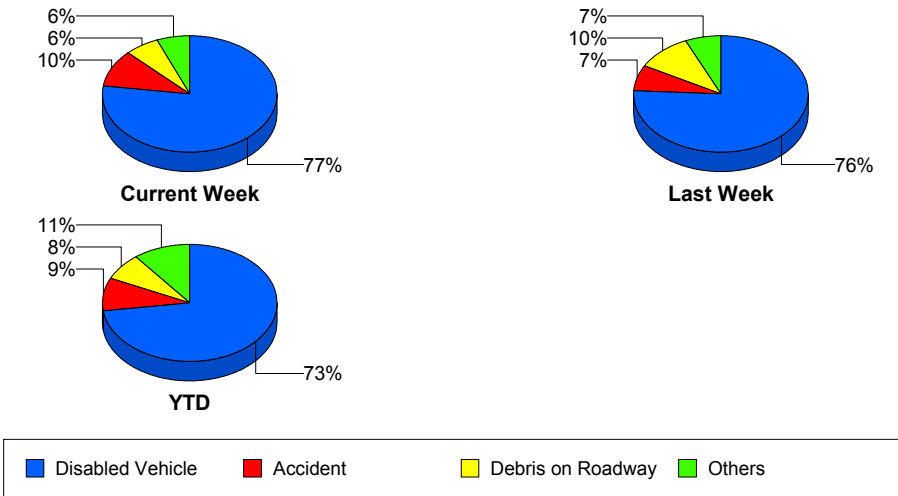
Police Activity

	<u>Current Week</u>	<u>Last Week</u>	<u>YTD</u>
Number of Events	4	1	322
Number of Incidents	0	1	31
TMC Detection (min.)	0.00	0.00	0.04
TMC Verification (min.)	0.00	0.00	0.30
TMC Response (min.)		6.12	11.27
RR Dispatch Time (min.)		1.35	6.12
RR Response Time (min.)		4.77	5.15
Event Clearance (min.)	45.86	56.88	26.64
Roadway Clearance (min.)		44.58	73.60
Incident Clearance (min.)		56.88	107.66
# of Events w/ RR/SIRV	0	1	25
RR/SIRV Assists	0	1	25
RR/SIRV Activities	0	2	28

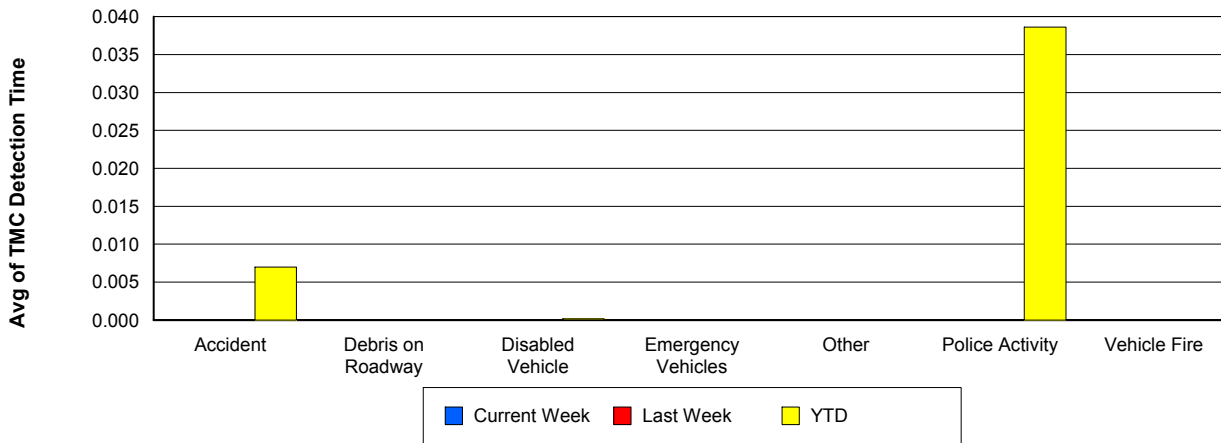
Vehicle Fire

	<u>Current Week</u>	<u>YTD</u>
Number of Events	2	27
Number of Incidents	2	20
TMC Detection (min.)	0.00	0.00
TMC Verification (min.)	0.00	2.77
TMC Response (min.)		25.42
RR Dispatch Time (min.)		19.18
RR Response Time (min.)		6.24
Event Clearance (min.)	51.67	88.90
Roadway Clearance (min.)	13.92	73.88
Incident Clearance (min.)	51.67	106.13
# of Events w/ RR/SIRV	0	15
RR/SIRV Assists	0	15
RR/SIRV Activities	0	23

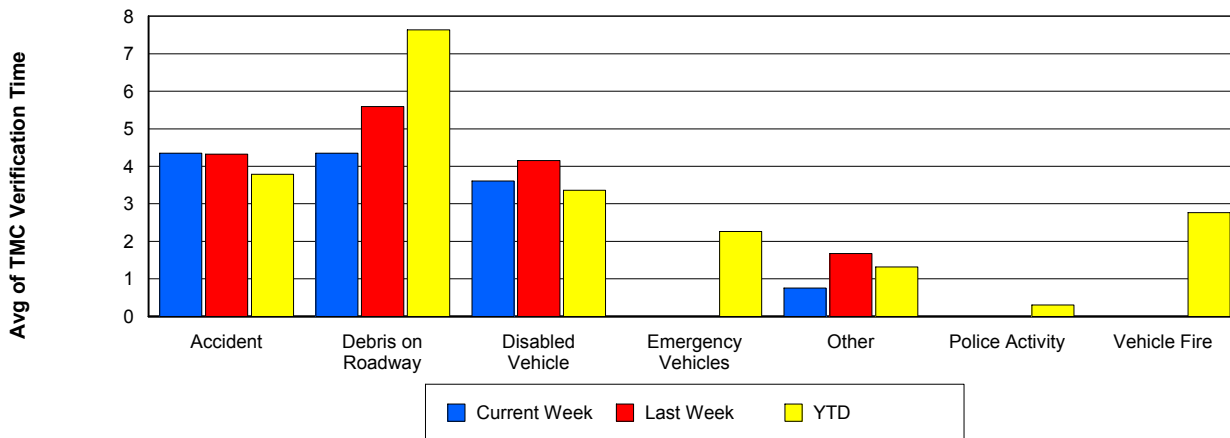
Number of Events / Event Type



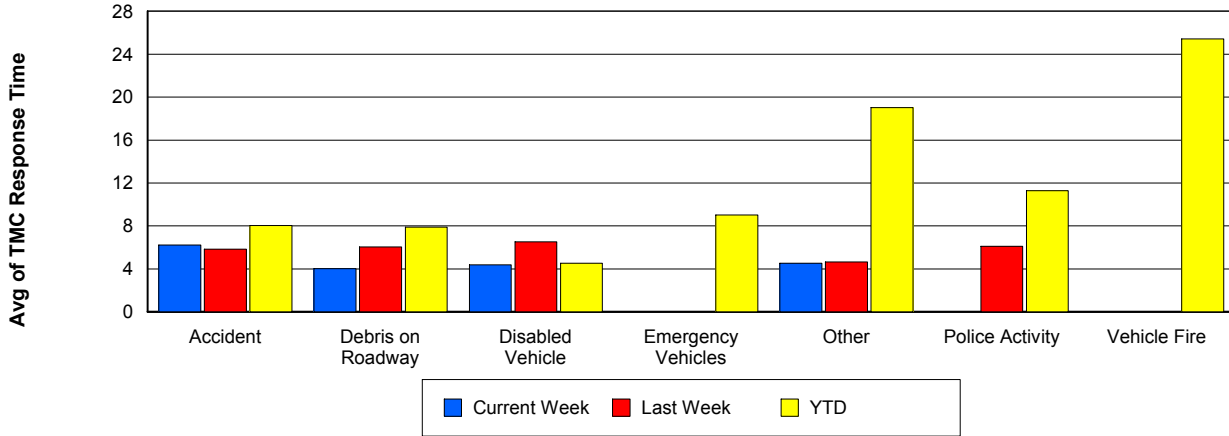
TMC Detection Time



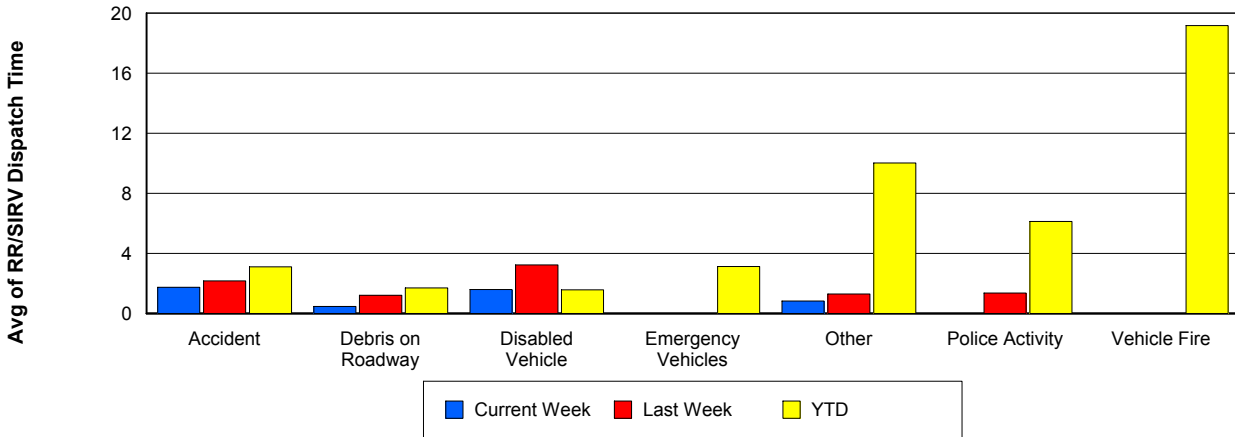
TMC Verification Time



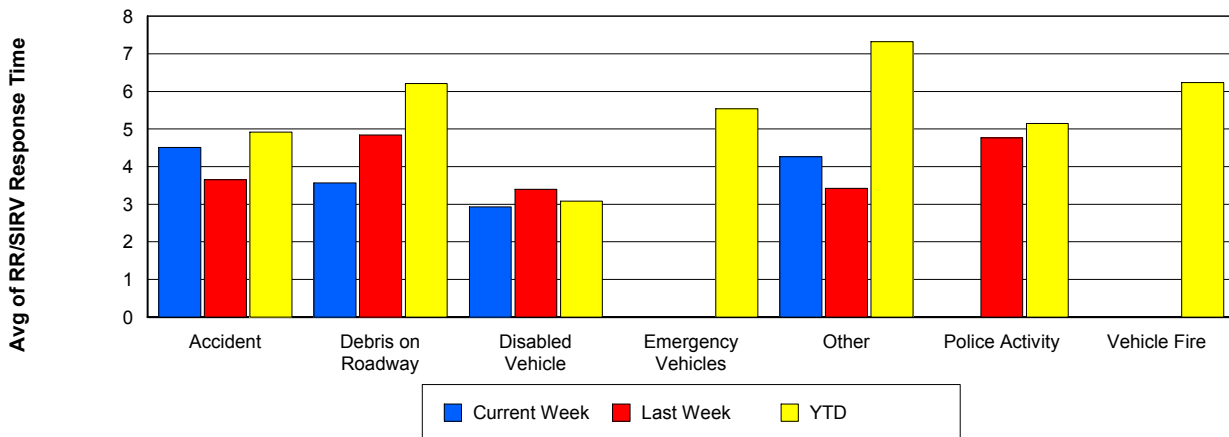
TMC Response Time



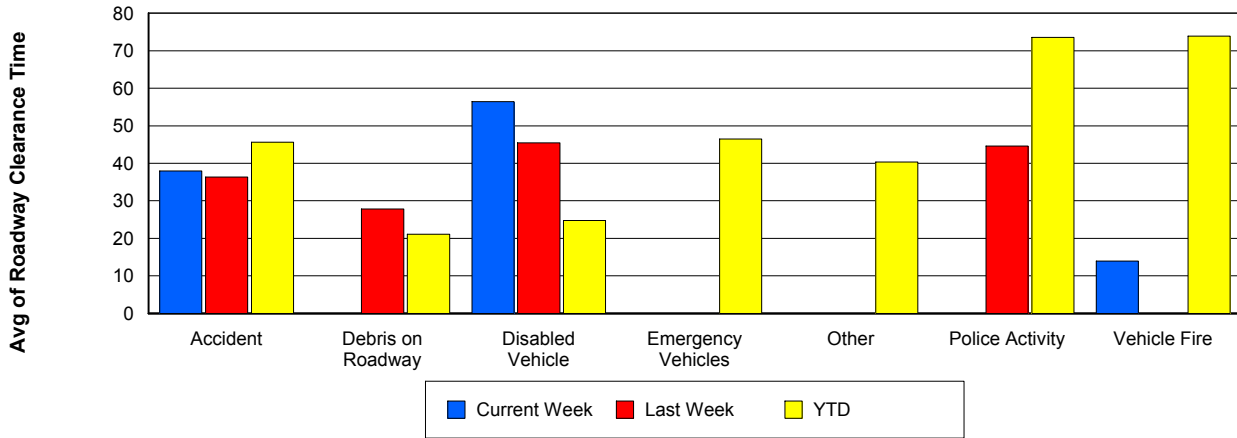
Road Ranger / SIRV Dispatch Time



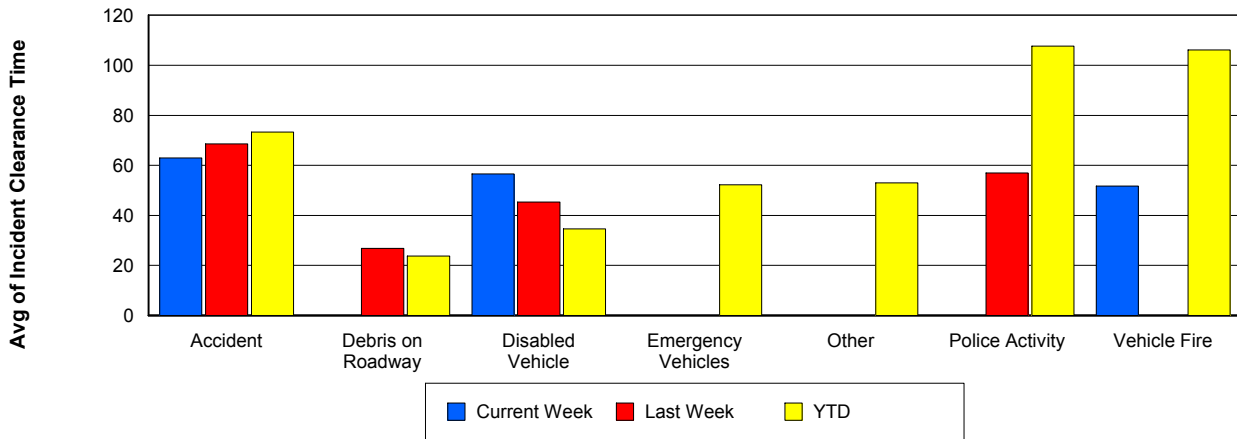
Road Ranger / SIRV Response Time



Roadway Clearance Time (2A)



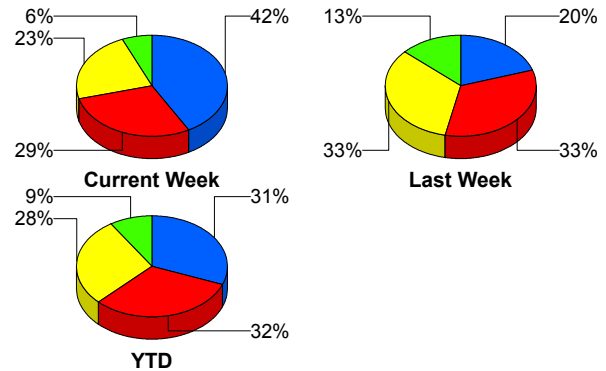
Incident Clearance Time (3B)



Incident Detection Methods

	Current Week	Last Week	YTD
Broward CCTV	0	0	7
Broward Road Ranger	0	0	6
Broward VideoWall	0	0	1
Construction CEI	0	0	1
District 4	0	1	17
Emergency Operations	0	0	1
FHP	13	3	212
I-95 Construction PIO	0	0	2
ITMS	1	0	8
ITMS CCTV	7	5	196
Local Police	0	0	1
Media	0	0	2
Motorist	1	1	12
Palm Beach Road Ran	9	5	218
Road Watcher	0	0	1
SmarTraveler (511)	0	0	4
Total	31	15	689

Total Incidents by Detection Method



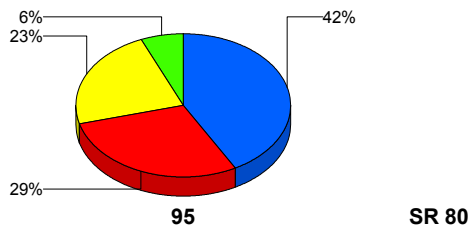
■ FHP
 ■ Palm Beach Road Ranger
 ■ ITMS CCTV
 ■ Others

Incident Detection Methods by Roadway

		Current Week	Last Week	YTD
95	Broward CCTV	0	0	7
	Broward Road Ranger	0	0	6
	Broward VideoWall	0	0	1
	Construction CEI	0	0	1
	District 4	0	1	17
	FHP	13	3	211
	I-95 Construction PIO	0	0	2
	ITMS	1	0	7
	ITMS CCTV	7	5	196
	Local Police	0	0	1
	Media	0	0	2
	Motorist	1	1	12
	Palm Beach Road Ran	9	5	218
	Road Watcher	0	0	1
	SmarTraveler (511)	0	0	4
Total	31	15	686	
SR 80	Emergency Operations	0	0	1
	FHP	0	0	1
	ITMS	0	0	1
	Total	0	0	3
Total	31	15	689	

Total Events by Roadway and Detection Method

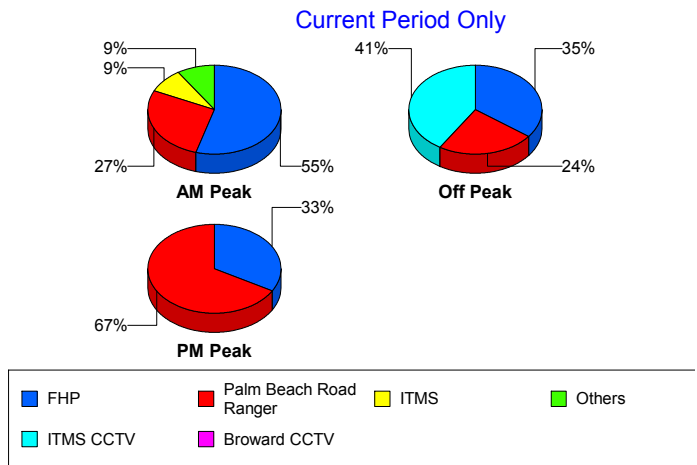
Current Period Only



Incident Detection Methods by Peak Period

		Current Week	Last Week	YTD
AM Peak	Broward CCTV	0	0	2
	Broward Road Ranger	0	0	3
	District 4	0	0	9
	FHP	6	0	75
	ITMS	1	0	4
	ITMS CCTV	0	1	28
	Motorist	1	0	6
	Palm Beach Road Ran	3	0	76
	Road Watcher	0	0	1
	SmarTraveler (511)	0	0	3
	Total	11	1	207
Off Peak	Broward CCTV	0	0	4
	Broward Road Ranger	0	0	1
	Broward VideoWall	0	0	1
	Construction CEI	0	0	1
	District 4	0	0	6
	FHP	6	0	94
	I-95 Construction PIO	0	0	2
	ITMS	0	0	3
	ITMS CCTV	7	4	104
	Motorist	0	1	3
	Palm Beach Road Ran	4	3	76
	SmarTraveler (511)	0	0	1
	Total	17	8	296
PM Peak	Broward CCTV	0	0	1
	Broward Road Ranger	0	0	2
	District 4	0	1	2
	Emergency Operations	0	0	1
	FHP	1	3	43
	ITMS	0	0	1
	ITMS CCTV	0	0	64

Total Events by Peak Period and Detection Method

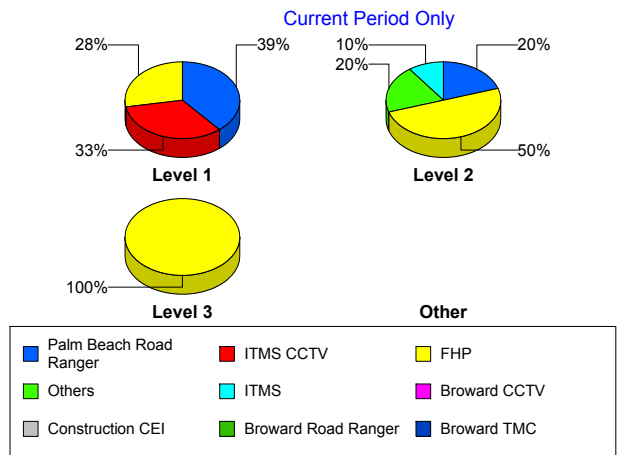


		Current Week	Last Week	YTD
PM Peak	Local Police	0	0	1
	Media	0	0	2
	Motorist	0	0	3
	Palm Beach Road Ran	2	2	66
	Total	3	6	186
Total		31	15	689

Incident Detection Methods by Severity

		Current Week	Last Week	YTD
Level 1	Broward CCTV	0	0	5
	Broward Road Ranger	0	0	4
	District 4	0	1	13
	FHP	5	0	78
	I-95 Construction PIO	0	0	1
	ITMS	0	0	2
	ITMS CCTV	6	3	85
	Local Police	0	0	1
	Motorist	0	1	8
	Palm Beach Road Ran	7	2	158
	Road Watcher	0	0	1
	SmarTraveler (511)	0	0	1
	Total	18	7	357
Level 2	Broward Road Ranger	0	0	2
	Broward VideoWall	0	0	1
	District 4	0	0	4
	FHP	5	3	99
	I-95 Construction PIO	0	0	1
	ITMS	1	0	5
	ITMS CCTV	1	2	80
	Media	0	0	1
	Motorist	1	0	3
	Palm Beach Road Ran	2	3	49

Total Events by Severity and Detection Method



		Current Week	Last Week	YTD
Level 2	SmarTraveler (511)	0	0	3
	Total	10	8	248
Level 3	Broward CCTV	0	0	2
	Construction CEI	0	0	1
	Emergency Operations	0	0	1
	FHP	3	0	35
	ITMS	0	0	1
	ITMS CCTV	0	0	31
	Media	0	0	1
	Motorist	0	0	1
	Palm Beach Road Ran	0	0	11
	Total	3	0	84
Total		31	15	689

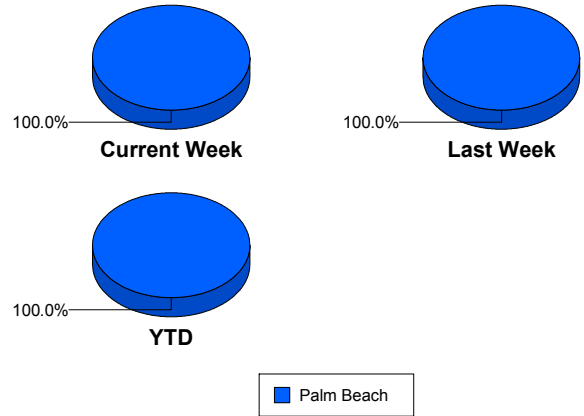
Road Ranger / SIRV Performance Measures

Road Ranger / SIRV Performance By County

Values presented are:
 - Total Events with a RR/SIRV Response
 - Total RR/SIRV Responses,
 - Total Activities Performed

	Current We	Last Week	YTD
Palm Beach	357	401	11,182
	370	423	11,594
	401	435	12,380

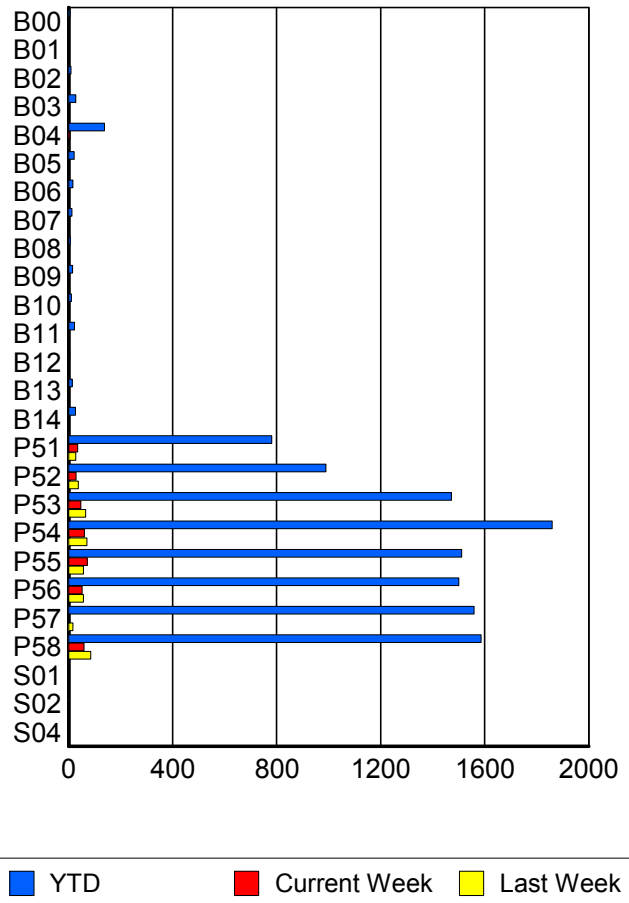
RR/SIRV Responses per County



Road Ranger / SIRV Performance By Truck

	Current We	Last Week	YTD
B00	0	0	5
	0	0	5
	0	0	5
B01	0	0	1
	0	0	1
	0	0	1
B02	2	1	9
	2	1	9
	2	1	9
B03	1	1	27
	1	1	27
	1	1	28
B04	5	2	137
	5	2	138
	5	2	160
B05	0	1	20
	0	1	21
	0	1	22
B06	1	0	16
	1	0	16
	1	0	16
B07	3	0	13
	3	0	13
	3	0	13
B08	1	0	7
	1	0	7
	2	0	8

RR/SIRV Responses per Truck



	Current We	Last Week	YTD
B09	0	0	15
	0	0	15
	0	0	15
B10	0	0	10
	0	0	11
	0	0	11
B11	2	0	23
	2	0	23
	2	0	24
B12	0	0	4
	0	0	4
	0	0	4
B13	0	0	14
	0	0	14
	0	0	15
B14	0	2	26
	0	2	26
	0	2	27
P51	35	27	771
	35	27	781
	38	28	818
P52	29	37	982
	29	37	989
	30	37	1,058
P53	47	65	1,454
	47	66	1,472
	48	68	1,558
P54	61	67	1,837
	61	70	1,860
	67	72	1,995
P55	70	56	1,497
	72	57	1,512
	81	59	1,620
P56	52	57	1,480
	52	57	1,500
	58	58	1,615
P57	0	16	1,543
	0	16	1,559
	0	17	1,673
P58	59	85	1,561
	59	85	1,586
	63	88	1,680
S01	0	0	1
	0	0	1
	0	0	1

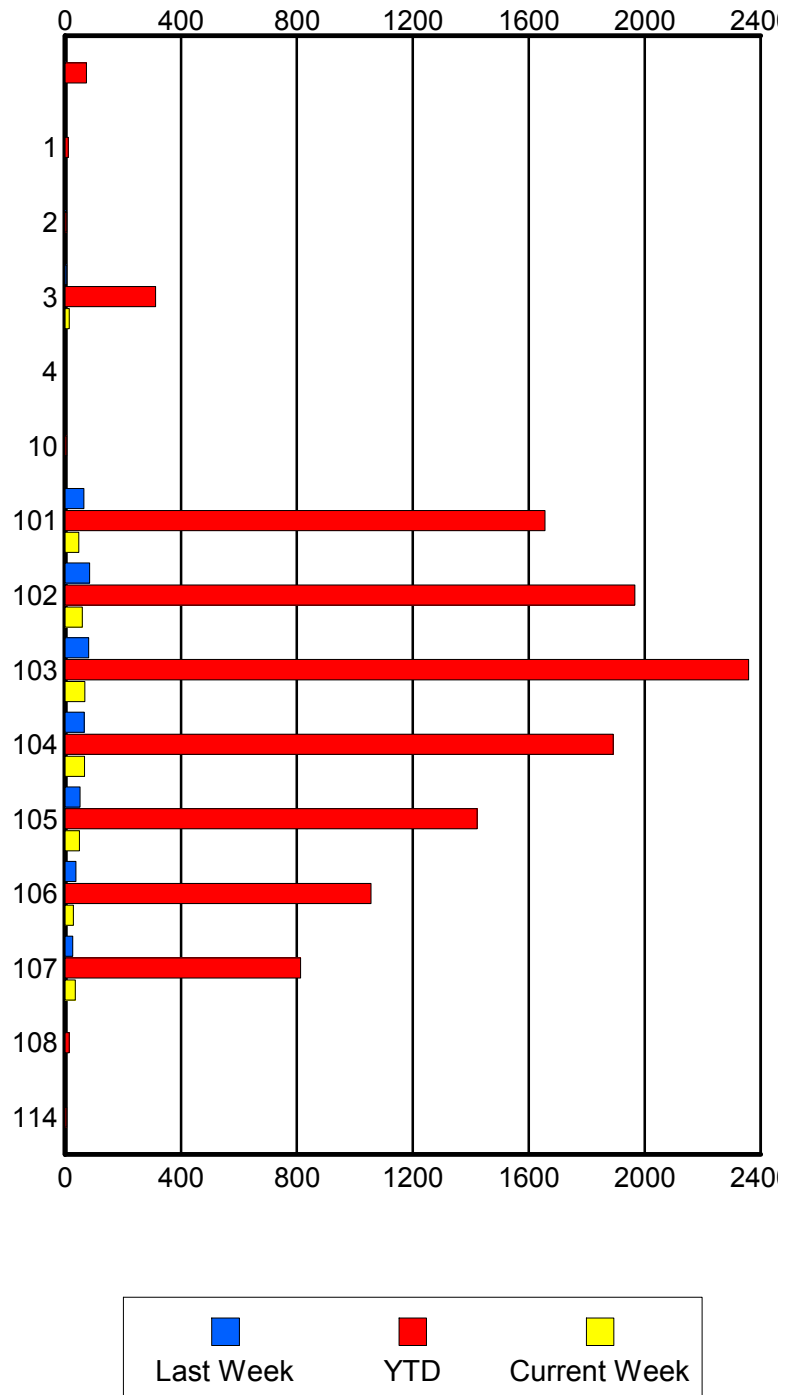
	Current We	Last Week	YTD
S02	0	1	2
	0	1	2
	0	1	2
S04	0	0	2
	0	0	2
	0	0	2

Road Ranger / SIRV Performance By Beat

	Current We	Last Week	YTD
	0	2	74
	0	2	74
	0	2	74
1	0	0	11
	0	0	11
	0	0	12
2	0	1	6
	0	1	6
	0	1	7
3	13	6	306
	15	6	312
	16	6	338
4	0	0	2
	0	0	2
	0	0	2
10	0	0	6
	0	0	6
	0	0	9
101	47	65	1,636
	47	65	1,656
	51	68	1,778
102	59	85	1,940
	59	85	1,966
	63	88	2,088
103	67	82	2,327
	68	82	2,359
	73	85	2,535
104	66	63	1,868
	67	66	1,891
	76	67	2,022
105	50	50	1,409
	50	52	1,422
	54	53	1,516
106	29	37	1,041
	29	37	1,056
	30	37	1,131
107	35	27	802
	35	27	813
	38	28	848
108	0	0	13
	0	0	14
	0	0	14
114	0	0	6
	0	0	6
	0	0	6

Values presented are:
 - Total Events with a RR/SIRV Response
 - Total RR/SIRV Responses,
 - Total Activities Performed

RR/SIRV Responses per Beat

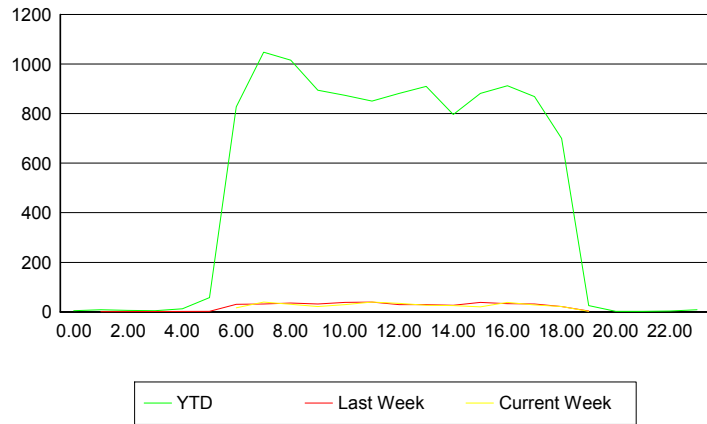


Road Ranger / SIRV Performance By Time of Day

Values presented are:
 - Total Events with a RR/SIRV Response
 - Total RR/SIRV Responses,
 - Total Activities Performed

	Current We	Last Week	YTD
12AM-1AM	0 0 0	0 0 0	5 5 5
1AM-2AM	0 0 0	1 1 1	6 8 8
2AM-3AM	0 0 0	0 0 0	6 6 7
3AM-4AM	0 0 0	0 0 0	4 4 4
4AM-5AM	0 0 0	0 0 0	9 12 13
5AM-6AM	0 0 0	2 2 2	53 57 60
6AM-7AM	16 16 16	27 31 35	794 828 874
7AM-8AM	38 40 46	32 32 32	1,004 1,048 1,125
8AM-9AM	28 30 31	36 36 37	977 1,016 1,089
9AM-10AM	21 21 23	31 32 32	862 894 977
10AM-11AM	28 29 31	37 38 39	841 874 923
11AM-12PM	39 39 40	34 39 39	819 850 919
12PM-1PM	31 34 36	28 29 30	847 882 941

Number of Responses / Hour of the Day



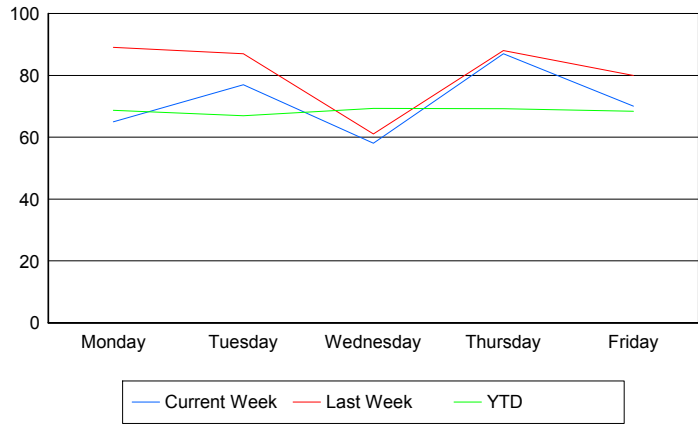
	Current We	Last Week	YTD
1PM-2PM	24	24	883
	26	29	910
	29	30	984
2PM-3PM	24	25	768
	25	27	797
	27	27	846
3PM-4PM	20	38	852
	20	38	882
	20	38	945
4PM-5PM	38	31	883
	38	33	912
	44	37	965
5PM-6PM	26	31	838
	28	32	868
	30	32	912
6PM-7PM	22	21	692
	22	21	700
	25	21	740
7PM-8PM	2	3	25
	2	3	25
	3	3	27
8PM-9PM	0	0	2
	0	0	2
	0	0	2
9PM-10PM	0	0	1
	0	0	2
	0	0	2
10PM-11PM	0	0	3
	0	0	3
	0	0	3
11PM-12AM	0	0	8
	0	0	9
	0	0	9

Road Ranger / SIRV Performance By Day of Week

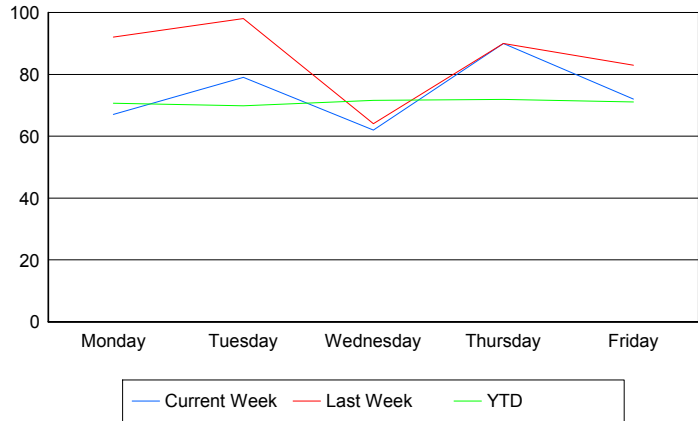
Values presented are:
 - Total Events with a RR/SIRV Response
 - Total RR/SIRV Responses,
 - Total Activities Performed

	Current We	Last Week	YTD
Monday	65	87	2,210
	67	90	2,272
	69	92	2,401
Tuesday	77	87	2,162
	79	98	2,252
	85	99	2,396
Wednesday	58	61	2,256
	62	64	2,329
	64	67	2,503
Thursday	87	88	2,284
	90	90	2,374
	102	93	2,549
Friday	70	78	2,277
	72	81	2,367
	81	84	2,531

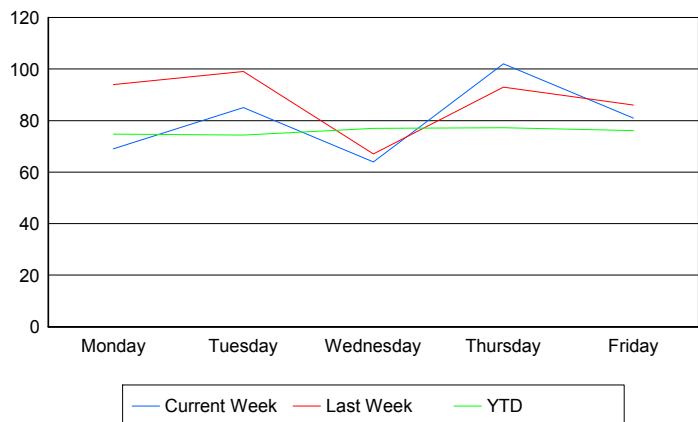
Avg # of events with a RR/SIRV Response per Day of the Week



Avg # of RR/SIRV Responses per Day of the Week



Avg # of RR/SIRV Activities Performed per Day of the Week



Road Ranger / SIRV Responses per Time of Day and Day of Week

