



Weekly Performance Measures Report Palm Beach County



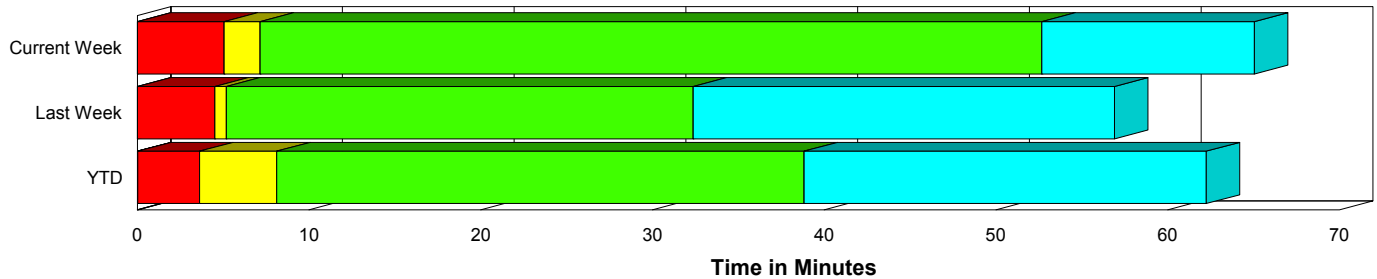
Created on:
October 18, 2009
9:26 pm

Period From Oct 11, 2009 to Oct 17, 2009

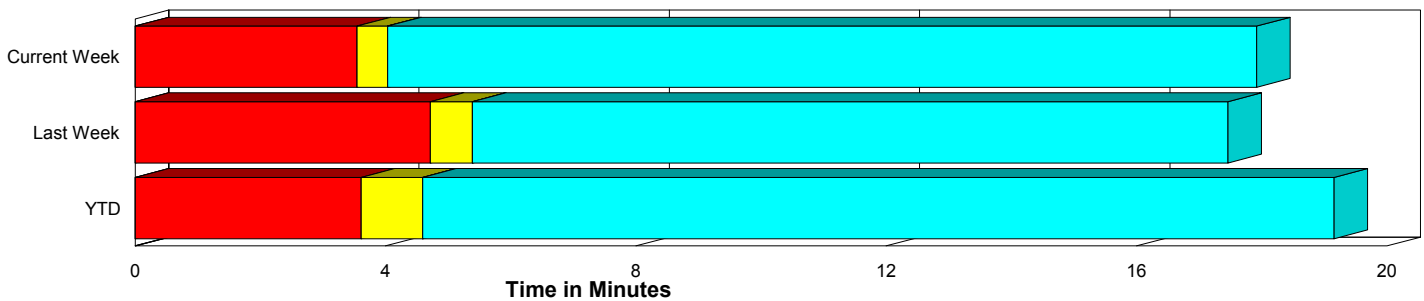
Performance Measures Summary

	Traffic Events (No Lanes Blocked)			Incidents (Lanes Blocked)		
	<u>This Week</u>	<u>Last Week</u>	<u>YTD</u>	<u>This Week</u>	<u>Last Week</u>	<u>YTD</u>
Number of Events	431	440	13,039	18	25	869
TMC Detection (min.)	0.00	0.00	0.00	0.00	0.00	0.03
TMC Verification (min.)	3.54	4.72	3.61	5.06	4.51	3.60
TMC Response (min.)	4.11	5.57	5.18	7.15	5.18	8.78
RR Dispatch Time (min.)	1.36	1.40	1.69	1.70	1.28	3.86
RR Response Time (min.)	3.07	4.20	3.59	5.46	3.90	4.89
Roadway Clearance (min.)				52.67	32.38	48.23
Event Clearance (min.)	17.99	17.64	19.75	65.02	56.90	71.34
# of Events w/ RR/SIRV	427	435	11,340	18	25	688
RR/SIRV Responses	427	435	11,340	18	25	688
RR/SIRV Activities	463	489	12,342	25	38	994

Incident Clearance Time-Line



Traffic Event (Non-Lane Blockage) Time-Line



■ Avg. TMC Detection Time	■ Avg. Time from TMC Response to Roadway Clearance*
■ Avg. Time from TMC Detection to TMC Verification	■ Avg. Time from Roadway Clearance to Incident/Event Clearance**
■ Avg. Time from TMC Verification to TMC Response	

* Roadway clearance equals all travel lanes open

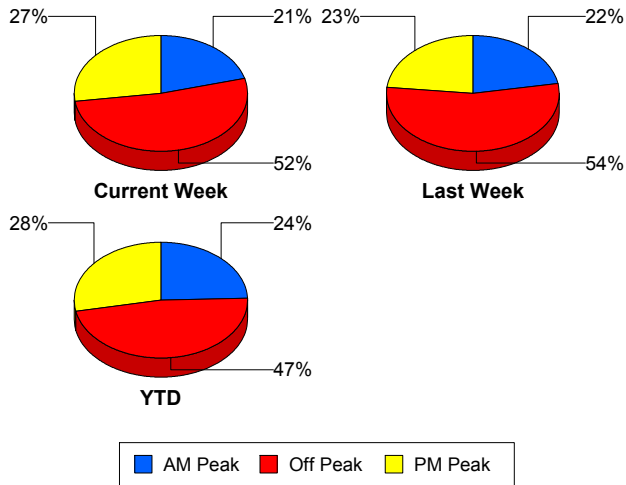
** Incident clearance equals time when last responder has left the scene

Performance Measures by Peak Period

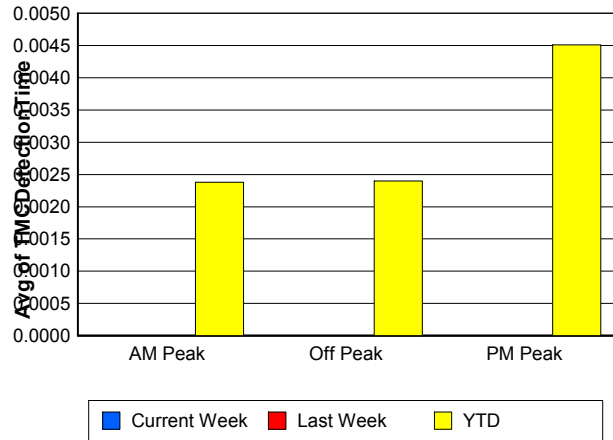
Note: AM peak period is defined as 6am to 10am and PM peak period is defined as 3pm to 7pm.

	AM Peak			Off Peak			PM Peak		
	<u>Current Week</u>	<u>Last Week</u>	<u>YTD</u>	<u>Current Week</u>	<u>Last Week</u>	<u>YTD</u>	<u>Current Week</u>	<u>Last Week</u>	<u>YTD</u>
Number of Events	93	103	3,406	234	253	6,595	122	109	3,907
Number of Incidents	5	5	255	11	14	394	2	6	220
TMC Detection (min.)	0.00	0.00	0.00	0.00	0.00	0.00	0.00	0.00	0.00
TMC Verification (min.)	2.60	4.16	3.18	3.06	4.57	3.30	5.40	5.55	4.51
TMC Response (min.)	3.30	5.21	4.53	3.92	5.56	6.03	5.54	5.82	5.26
RR Dispatch Time (min.)	1.30	0.67	1.25	1.42	1.64	2.45	1.33	1.53	1.43
RR Response Time (min.)	2.10	4.55	3.32	3.04	3.99	3.74	4.21	4.30	3.85
Event Clearance (min.)	22.78	17.82	22.36	19.41	20.32	24.41	18.56	20.25	21.08
Roadway Clearance (min.)	42.59	35.41	39.55	58.70	29.56	49.59	44.74	36.43	55.86
Incident Clearance (min.)	58.28	54.14	67.79	70.33	57.37	71.16	52.69	58.11	75.79
# of Events w/ RR/SIRV	92	102	3,259	233	249	5,081	120	109	3,688
RR/SIRV Responses	92	102	3,259	233	249	5,081	120	109	3,688
RR/SIRV Activities	99	117	3,686	262	279	5,625	127	131	4,025

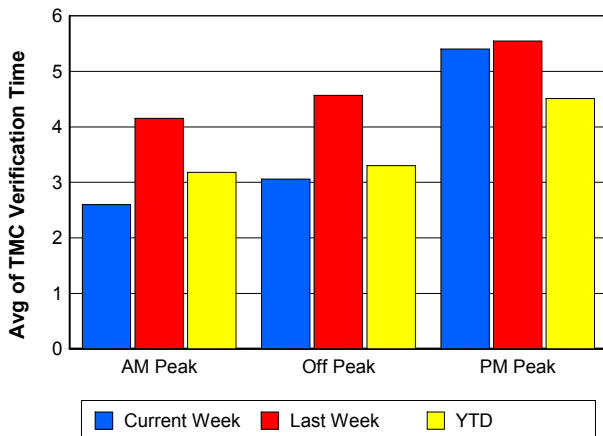
Number of Events / Peak Period



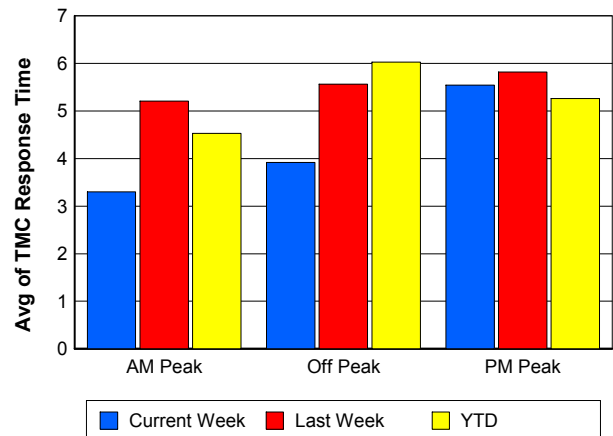
TMC Detection Time



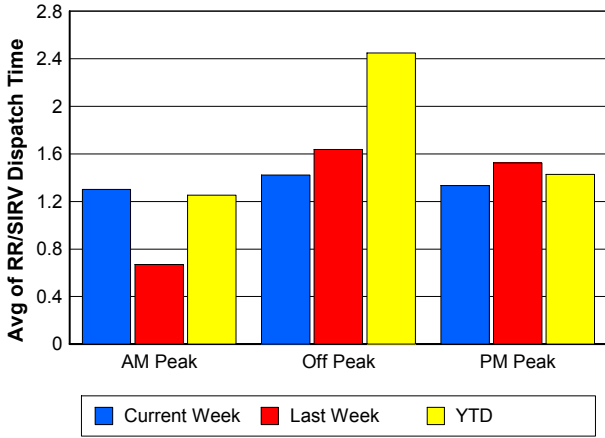
TMC Verification Time



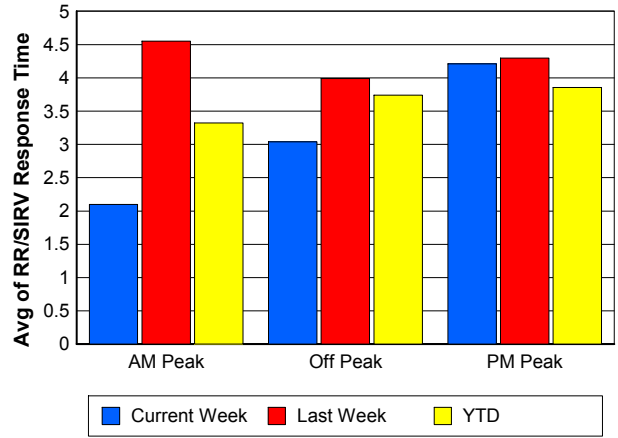
TMC Response Time



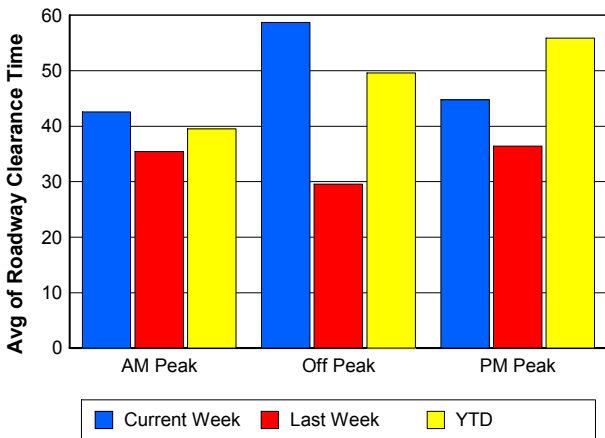
Road Ranger / SIRV Dispatch Time



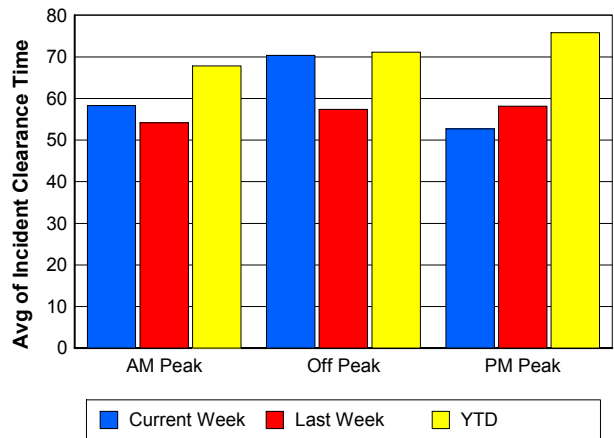
Road Ranger / SIRV Response Time



Roadway Clearance Time (2A)



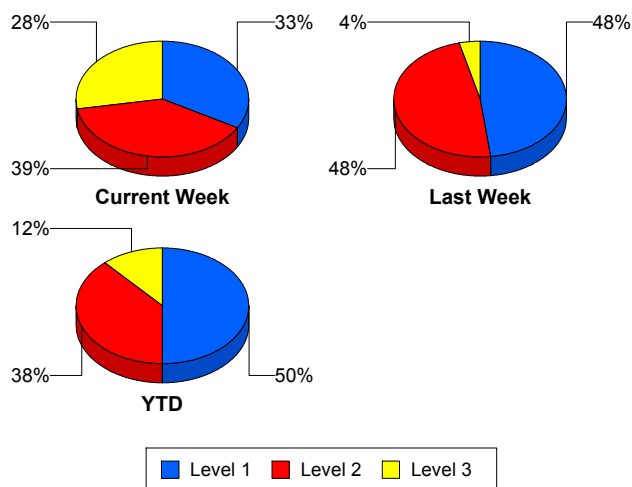
Incident Clearance Time (3B)



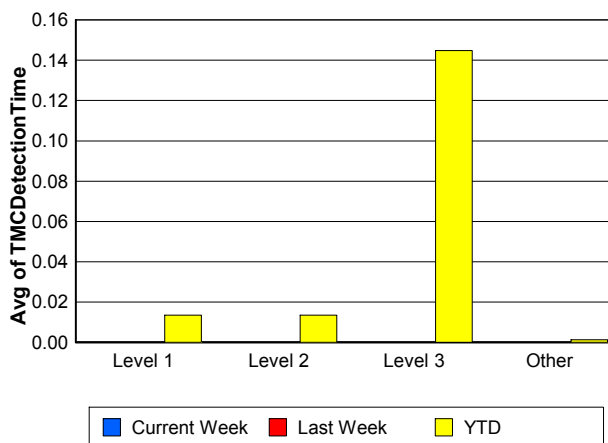
Performance Measures by Severity

	Level 1			Level 2			Level 3			Other		
	<u>This Week</u>	<u>Last Week</u>	<u>YTD</u>	<u>This Week</u>	<u>Last Week</u>	<u>YTD</u>	<u>This Week</u>	<u>Last Week</u>	<u>YTD</u>	<u>This Week</u>	<u>Last Week</u>	<u>YTD</u>
Number of Events	6	12	435	7	12	332	5	1	102	431	440	13,039
Number of Incidents	6	12	435	7	12	332	5	1	102	0	0	0
TMC Detection (min.)	0.00	0.00	0.01	0.00	0.00	0.01	0.00	0.00	0.14	0.00	0.00	0.00
TMC Verification (min.)	0.70	3.14	2.18	10.45	5.22	5.14	2.74	12.48	4.67	3.54	4.72	3.61
TMC Response (min.)	3.27	3.26	4.29	13.65	6.49	9.60	2.73	12.45	30.35	4.11	5.57	5.18
RR Dispatch Time (min.)	0.24	1.90	1.16	3.71	0.72	2.88	0.62	0.52	22.73	1.36	1.40	1.69
RR Resp. Time (min.)	3.03	1.37	3.14	9.94	5.77	6.70	2.10	11.93	7.62	3.07	4.20	3.59
Event Clearance (min.)	24.79	39.38	42.05	62.40	72.79	71.84	116.99	76.45	194.66	17.99	17.64	19.75
Roadway Clear. (min.)	7.39	15.85	14.54	49.38	49.55	53.40	111.63	24.63	175.11			
Incident Clearance (min.)	24.79	39.38	42.05	62.40	72.79	71.84	116.99	76.45	194.66			
# of Events w/ RR/SIRV	6	12	369	7	12	253	5	1	66	427	435	11,340
RR/SIRV Responses	6	12	369	7	12	253	5	1	66	427	435	11,340
RR/SIRV Activities	6	15	469	9	22	412	10	1	113	463	489	12,342

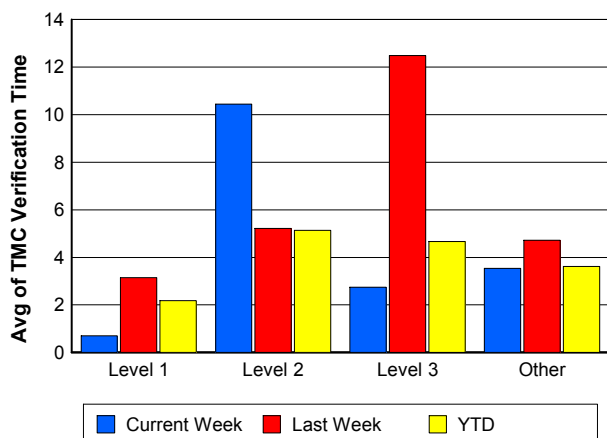
Number of Events / Severity



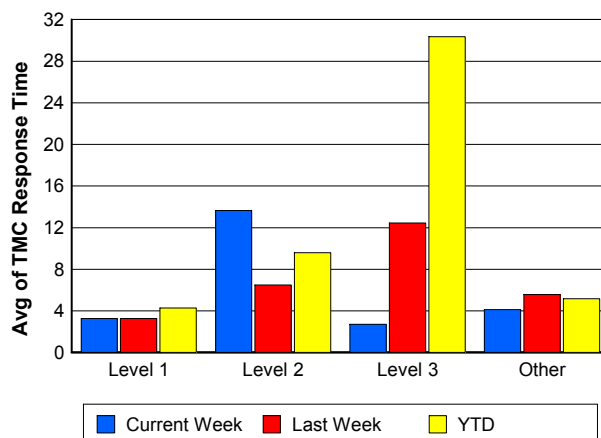
TMC Detection Time



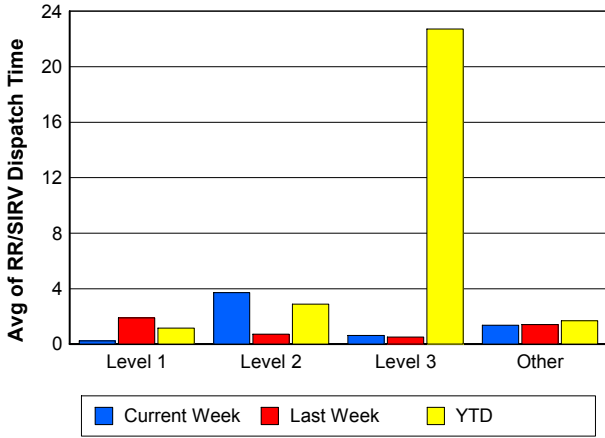
TMC Verification Time



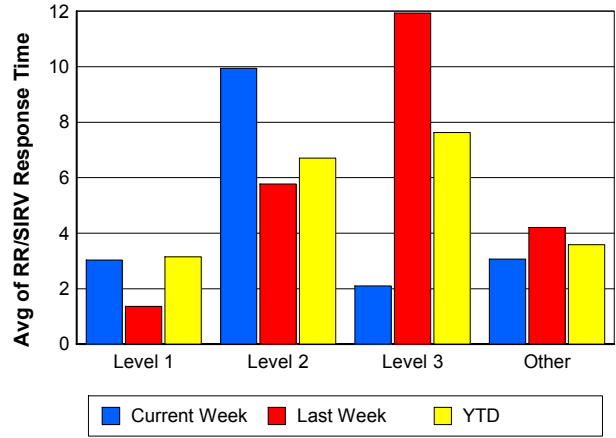
TMC Response Time



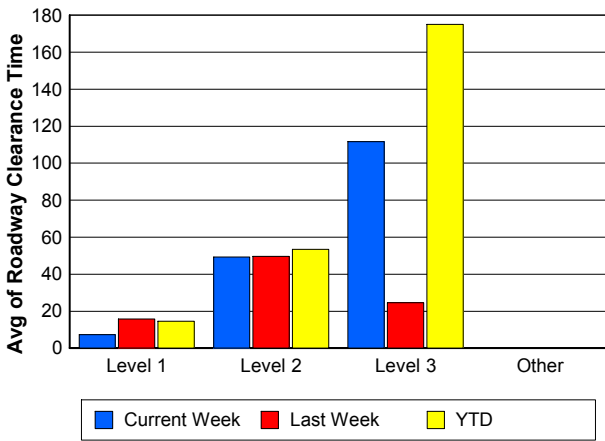
Road Ranger / SIRV Dispatch Time



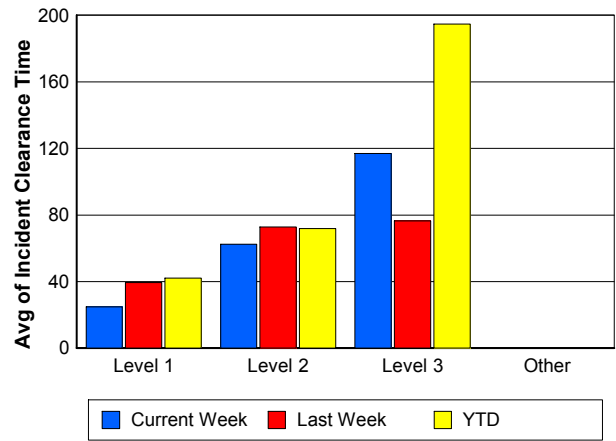
Road Ranger / SIRV Response Time



Roadway Clearance Time (2A)



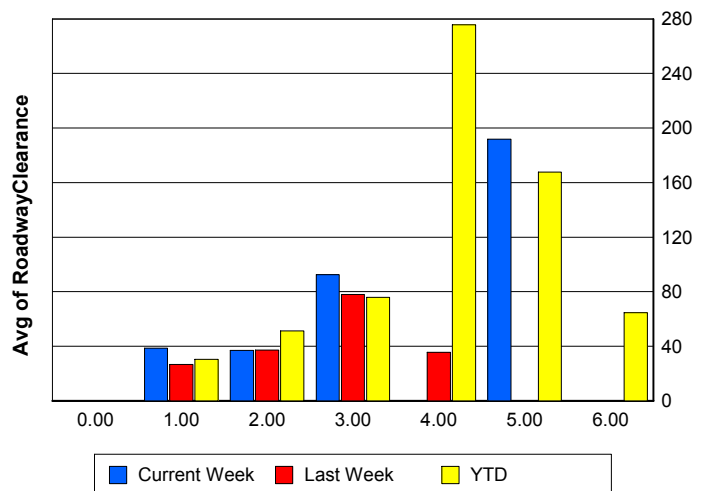
Incident Clearance Time (3B)



Roadway Clearance by Maximum Number of Lanes Blocked

	Current Week	Last Week	YTD
0			
1	38.59	26.53	30.36
2	37.06	37.24	51.17
3	92.48	77.97	75.93
4	0.00	35.55	275.73
5	191.92	0.00	167.73
6	0.00	0.00	64.70

Roadway Clearance Time (2A)



Performance Measures by Roadway

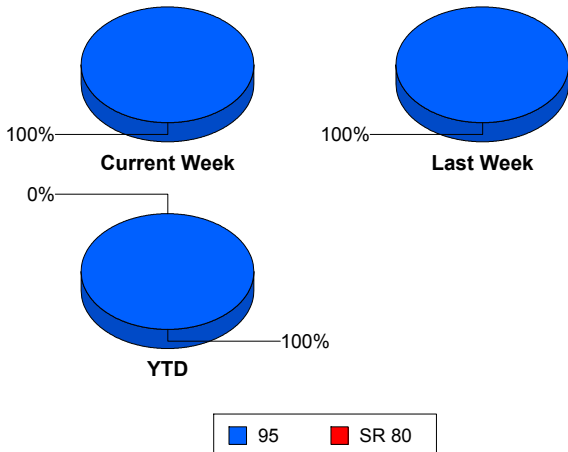
95

	<u>Current Week</u>	<u>Last Week</u>	<u>YTD</u>
Number of Events	449	465	13,904
Number of Incidents	18	25	866
TMC Detection (min.)	0.00	0.00	0.00
TMC Verification (min.)	3.61	4.71	3.61
TMC Response (min.)	4.24	5.55	5.39
RR Dispatch Time (min.)	1.37	1.40	1.81
RR Resp. Time (min.)	3.17	4.19	3.66
Event Clearance (min.)	19.88	19.75	22.57
Roadway Clear. (min.)	52.67	32.38	42.20
Incident Clearance (min.)	65.02	56.90	65.19
# of Events w/ RR/SIRV	445	460	12,028
RR/SIRV Responses	445	460	12,028
RR/SIRV Activities	488	527	13,336

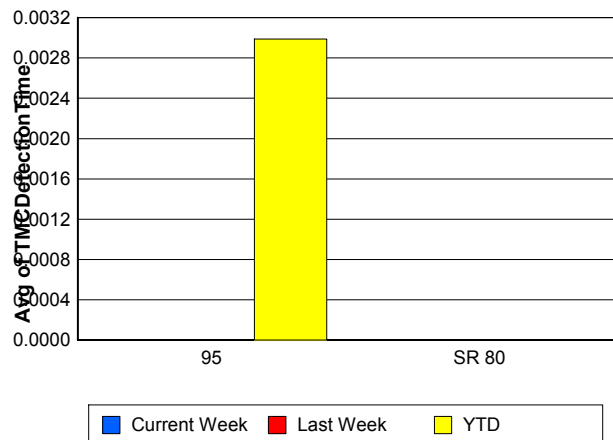
SR 80

	<u>YTD</u>
Number of Events	4
Number of Incidents	3
TMC Detection (min.)	0.00
TMC Verification (min.)	0.00
TMC Response (min.)	
RR Dispatch Time (min.)	
RR Resp. Time (min.)	
Event Clearance (min.)	1,409.98
Roadway Clear. (min.)	1,789.50
Incident Clearance (min.)	1,847.09
# of Events w/ RR/SIRV	0
RR/SIRV Responses	0
RR/SIRV Activities	0

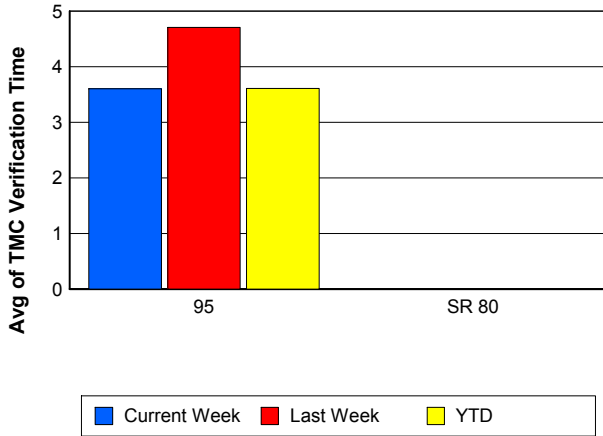
Number of Events / Roadway



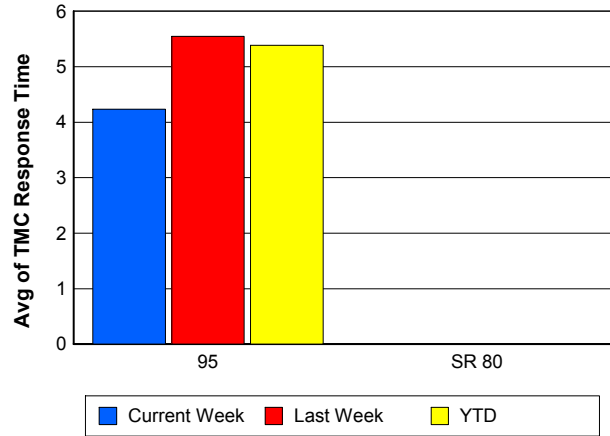
TMC Detection Time



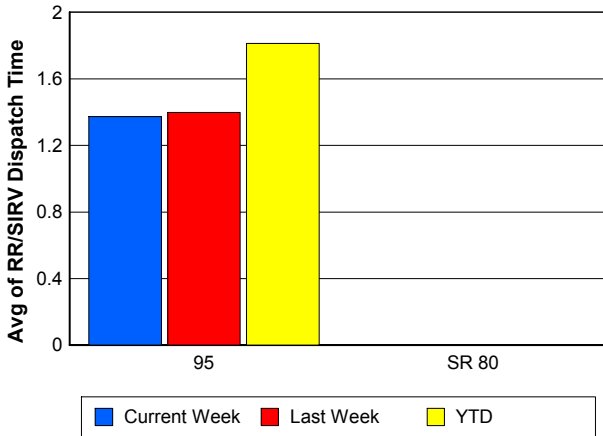
TMC Verification Time



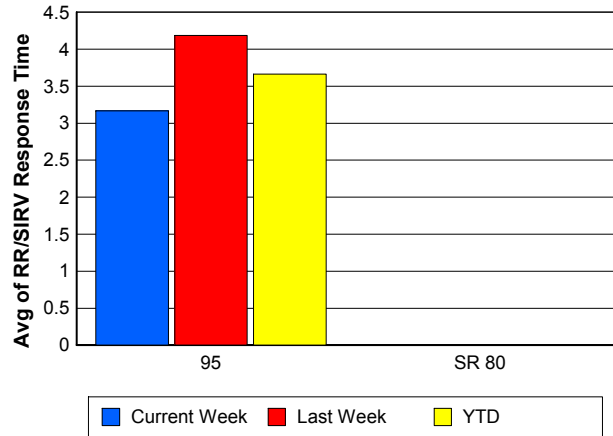
TMC Response Time



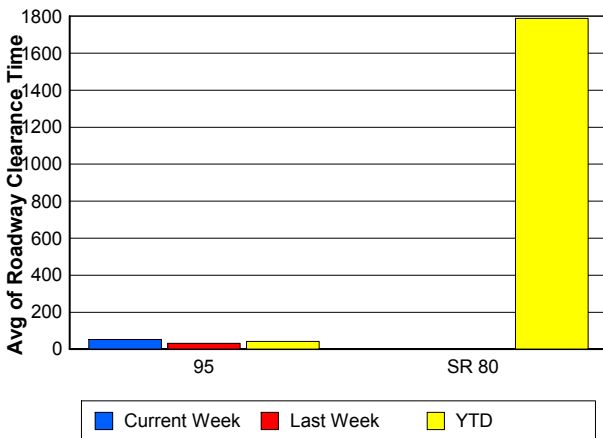
Road Ranger / SIRV Dispatch Time



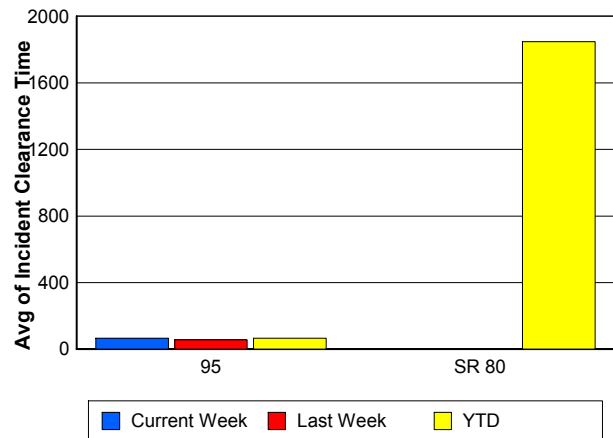
Road Ranger / SIRV Response Time



Roadway Clearance Time (2A)



Incident Clearance Time (3B)



Performance Measures by Event Type

Accident

	<u>Current Week</u>	<u>Last Week</u>	<u>YTD</u>
Number of Events	21	27	1,187
Number of Incidents	9	16	568
TMC Detection (min.)	0.00	0.00	0.01
TMC Verification (min.)	6.49	6.93	4.53
TMC Response (min.)	8.09	7.92	8.26
RR Dispatch Time (min.)	1.25	1.36	2.73
RR Response Time (min.)	6.84	6.56	5.52
Event Clearance (min.)	61.07	62.10	58.87
Roadway Clearance (min.)	72.92	36.12	45.38
Incident Clearance (min.)	92.32	72.05	73.66
# of Events w/ RR/SIRV	21	27	960
RR/SIRV Assists	21	27	960
RR/SIRV Activities	27	43	1,221

Debris on Roadway

	<u>Current Week</u>	<u>Last Week</u>	<u>YTD</u>
Number of Events	28	36	1,007
Number of Incidents	1	0	34
TMC Detection (min.)	0.00	0.00	0.00
TMC Verification (min.)	6.95	9.16	7.62
TMC Response (min.)	7.46	9.15	7.88
RR Dispatch Time (min.)	1.38	2.68	1.88
RR Response Time (min.)	6.08	6.48	6.01
Event Clearance (min.)	9.43	15.09	12.06
Roadway Clearance (min.)	3.93		20.27
Incident Clearance (min.)	3.87		23.51
# of Events w/ RR/SIRV	28	36	991
RR/SIRV Assists	28	36	991
RR/SIRV Activities	29	39	1,062

Disabled Vehicle

	<u>Current Week</u>	<u>Last Week</u>	<u>YTD</u>
Number of Events	392	388	10,417
Number of Incidents	6	7	184
TMC Detection (min.)	0.00	0.00	0.00
TMC Verification (min.)	3.25	4.28	3.43
TMC Response (min.)	3.82	5.10	4.57
RR Dispatch Time (min.)	1.34	1.27	1.50
RR Response Time (min.)	2.79	3.84	3.17
Event Clearance (min.)	18.12	17.20	18.01
Roadway Clearance (min.)	31.59	15.31	26.46
Incident Clearance (min.)	38.00	19.40	36.64
# of Events w/ RR/SIRV	388	384	9,678
RR/SIRV Assists	388	384	9,678
RR/SIRV Activities	426	434	10,670

Emergency Vehicles

	<u>YTD</u>
Number of Events	14
Number of Incidents	8
TMC Detection (min.)	0.00
TMC Verification (min.)	2.27
TMC Response (min.)	9.04
RR Dispatch Time (min.)	3.11
RR Response Time (min.)	5.54
Event Clearance (min.)	50.12
Roadway Clearance (min.)	46.52
Incident Clearance (min.)	52.24
# of Events w/ RR/SIRV	7
RR/SIRV Assists	7
RR/SIRV Activities	9

Other

	<u>Current Week</u>	<u>Last Week</u>	<u>YTD</u>
Number of Events	3	10	833
Number of Incidents	0	0	7
TMC Detection (min.)	0.00	0.00	0.00
TMC Verification (min.)	0.00	0.00	1.26
TMC Response (min.)	0.00	3.38	15.36
RR Dispatch Time (min.)	5.94	2.49	8.18
RR Response Time (min.)	0.00	3.16	6.34
Event Clearance (min.)	29.07	11.55	36.39
Roadway Clearance (min.)			40.35
Incident Clearance (min.)			52.93
# of Events w/ RR/SIRV	3	9	268
RR/SIRV Assists	3	9	268
RR/SIRV Activities	2	6	234

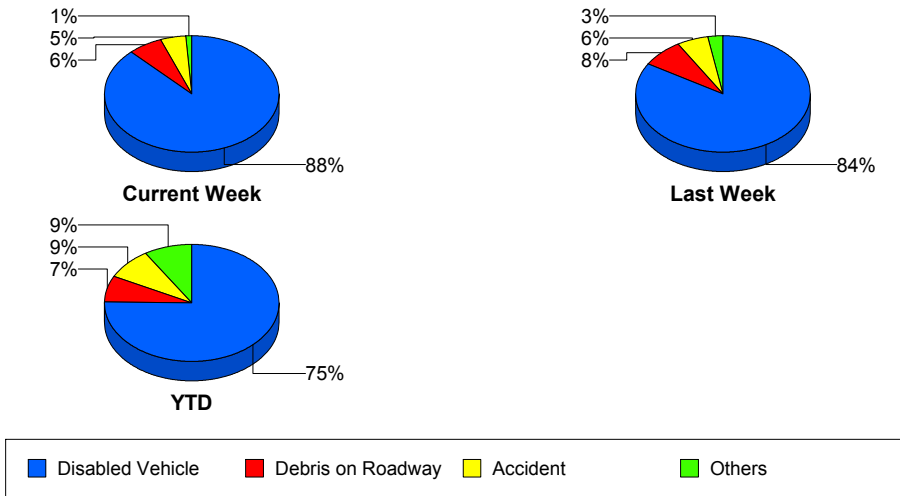
Police Activity

	<u>Last Week</u>	<u>YTD</u>
Number of Events	3	334
Number of Incidents	2	40
TMC Detection (min.)	0.00	0.06
TMC Verification (min.)	3.43	0.39
TMC Response (min.)	3.43	12.75
RR Dispatch Time (min.)	0.22	6.24
RR Response Time (min.)	3.21	6.51
Event Clearance (min.)	56.55	28.21
Roadway Clearance (min.)	62.13	72.22
Incident Clearance (min.)	66.95	101.36
# of Events w/ RR/SIRV	3	36
RR/SIRV Assists	3	36
RR/SIRV Activities	4	42

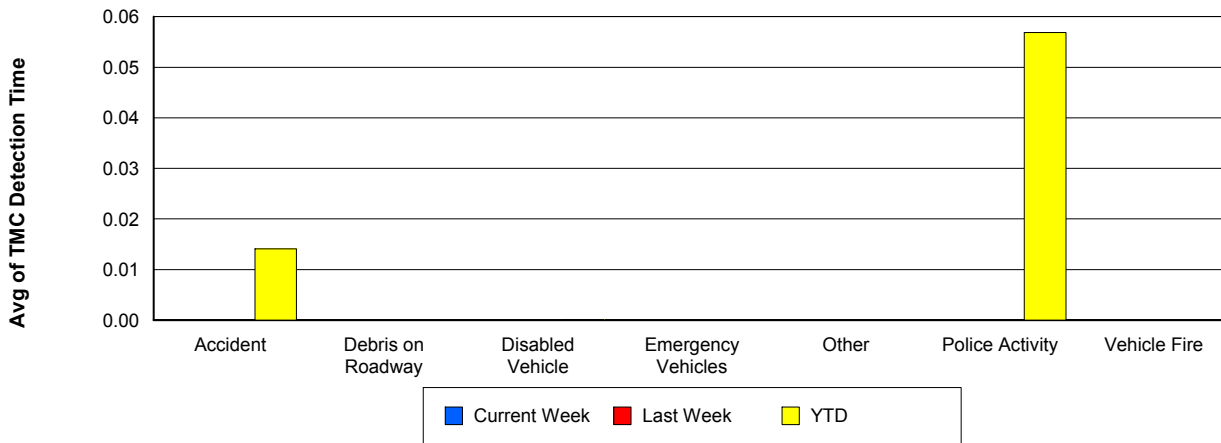
Vehicle Fire

	<u>Current Week</u>	<u>YTD</u>
Number of Events	2	35
Number of Incidents	2	27
TMC Detection (min.)	0.00	0.00
TMC Verification (min.)	0.95	3.21
TMC Response (min.)	0.92	19.57
RR Dispatch Time (min.)	0.68	13.67
RR Response Time (min.)	0.25	5.90
Event Clearance (min.)	53.82	84.21
Roadway Clearance (min.)	49.20	64.57
Incident Clearance (min.)	53.82	91.75
# of Events w/ RR/SIRV	2	22
RR/SIRV Assists	2	22
RR/SIRV Activities	2	31

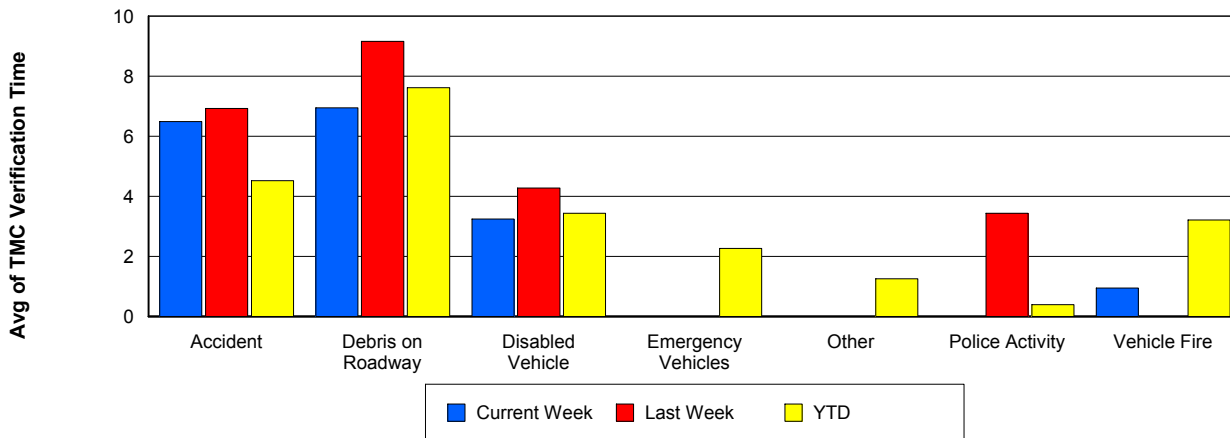
Number of Events / Event Type



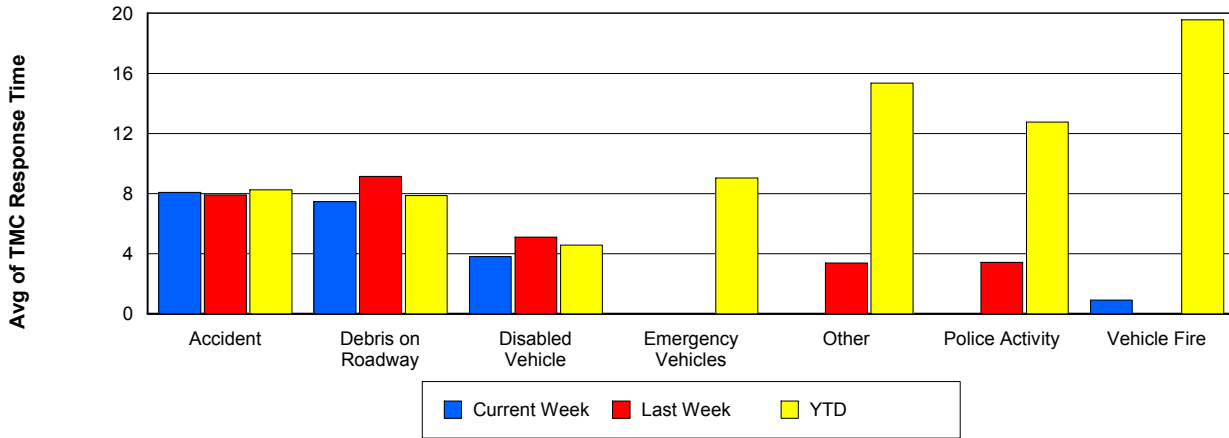
TMC Detection Time



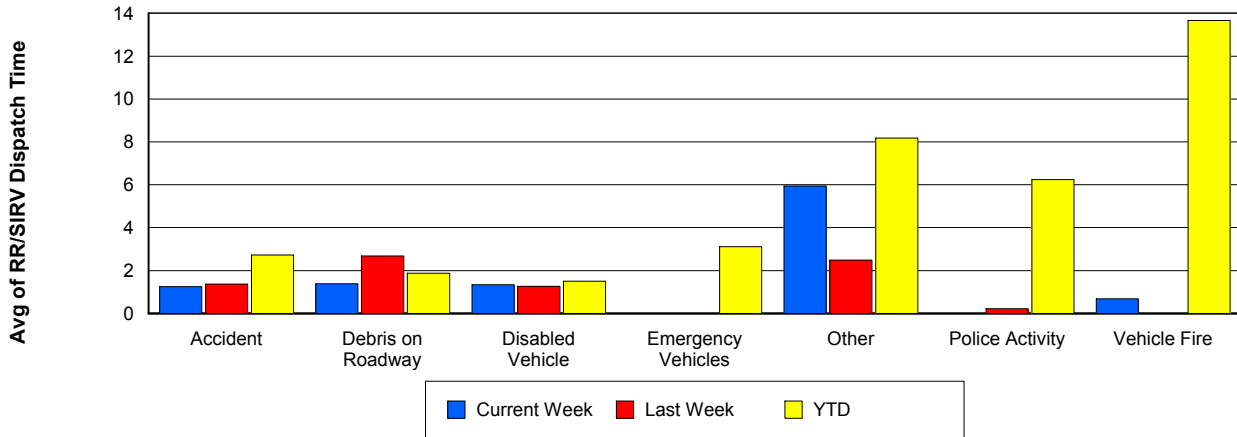
TMC Verification Time



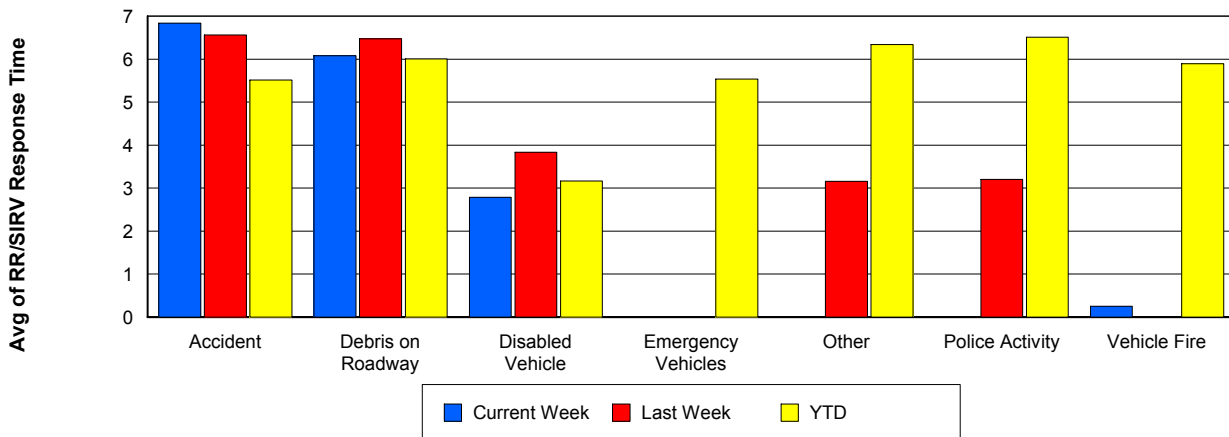
TMC Response Time



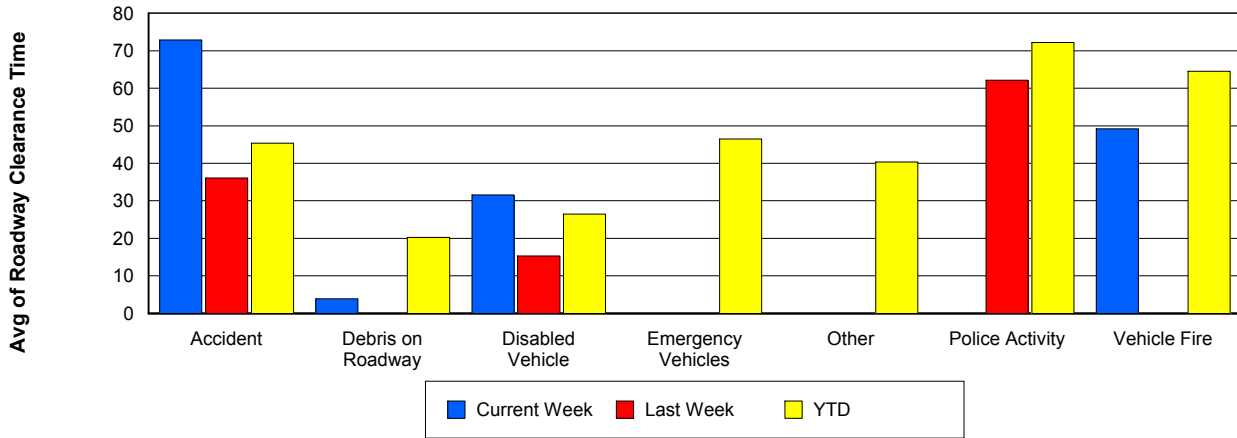
Road Ranger / SIRV Dispatch Time



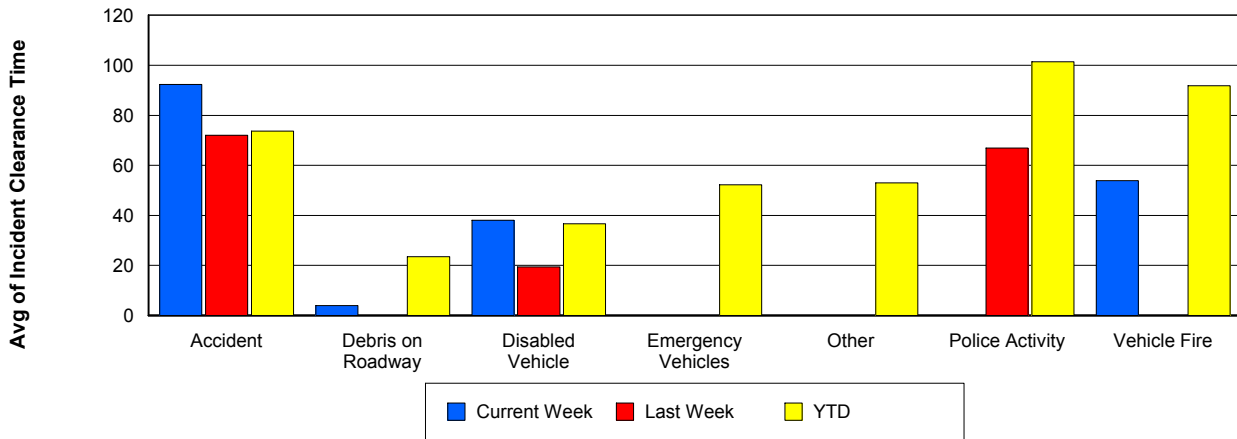
Road Ranger / SIRV Response Time



Roadway Clearance Time (2A)



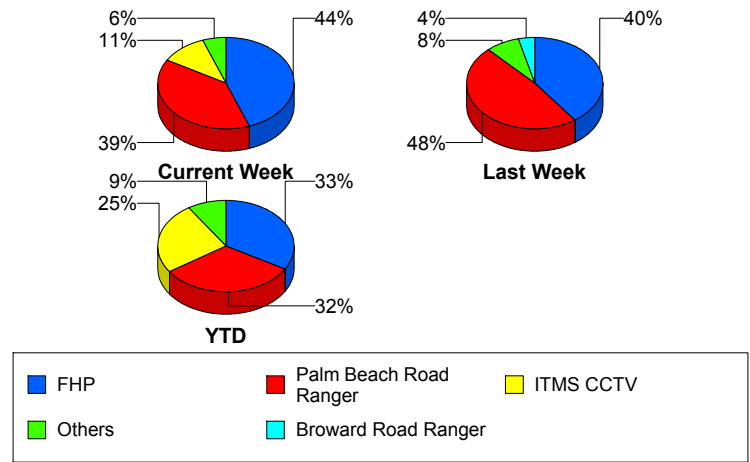
Incident Clearance Time (3B)



Incident Detection Methods

	Current Week	Last Week	YTD
Broward CCTV	0	0	7
Broward Road Ranger	0	1	7
Broward TMC	0	0	2
Broward VideoWall	0	0	1
Construction CEI	0	0	1
District 4	0	0	22
Emergency Operations	0	0	1
FHP	8	10	290
I-95 Construction PIO	0	1	3
ITMS	0	0	12
ITMS CCTV	2	1	220
Local Police	0	0	1
Media	0	0	2
Motorist	1	0	16
Palm Beach Road Ran	7	12	279
Road Watcher	0	0	1
SmarTraveler (511)	0	0	4
Total	18	25	869

Total Incidents by Detection Method

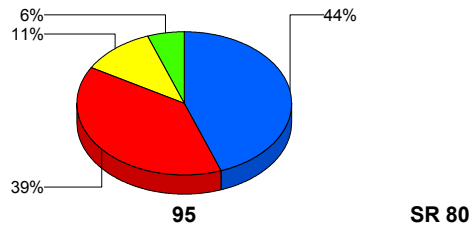


Incident Detection Methods by Roadway

		Current Week	Last Week	YTD
95	Broward CCTV	0	0	7
	Broward Road Ranger	0	1	7
	Broward TMC	0	0	2
	Broward VideoWall	0	0	1
	Construction CEI	0	0	1
	District 4	0	0	22
	FHP	8	10	289
	I-95 Construction PIO	0	1	3
	ITMS	0	0	11
	ITMS CCTV	2	1	220
	Local Police	0	0	1
	Media	0	0	2
	Motorist	1	0	16
	Palm Beach Road Ran	7	12	279
	Road Watcher	0	0	1
	SmarTraveler (511)	0	0	4
Total	18	25	866	
SR 80	Emergency Operations	0	0	1
	FHP	0	0	1
	ITMS	0	0	1
	Total	0	0	3
Total	18	25	869	

Total Events by Roadway and Detection Method

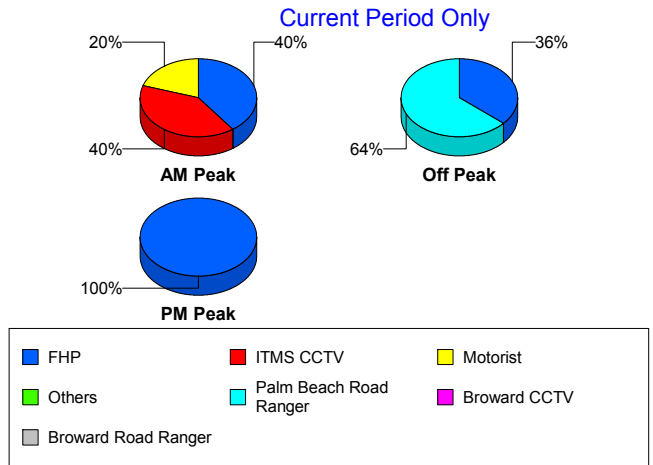
Current Period Only



Incident Detection Methods by Peak Period

		Current Week	Last Week	YTD
AM Peak	Broward CCTV	0	0	2
	Broward Road Ranger	0	0	3
	Broward TMC	0	0	2
	District 4	0	0	11
	FHP	2	0	89
	I-95 Construction PIO	0	1	1
	ITMS	0	0	5
	ITMS CCTV	2	0	39
	Motorist	1	0	7
	Palm Beach Road Ran	0	4	92
	Road Watcher	0	0	1
	SmarTraveler (511)	0	0	3
	Total	5	5	255
	Off Peak	Broward CCTV	0	0
Broward Road Ranger		0	0	1
Broward VideoWall		0	0	1
Construction CEI		0	0	1
District 4		0	0	8
FHP		4	7	143
I-95 Construction PIO		0	0	2
ITMS		0	0	6
ITMS CCTV		0	1	116
Motorist		0	0	5
Palm Beach Road Ran		7	6	106
SmarTraveler (511)		0	0	1
Total		11	14	394
PM Peak		Broward CCTV	0	0
	Broward Road Ranger	0	1	3
	District 4	0	0	3
	Emergency Operations	0	0	1
	FHP	2	3	58

Total Events by Peak Period and Detection Method

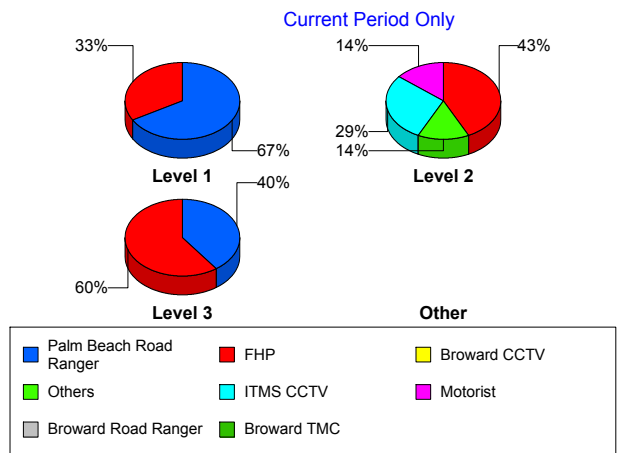


		Current Week	Last Week	YTD
PM Peak	ITMS	0	0	1
	ITMS CCTV	0	0	65
	Local Police	0	0	1
	Media	0	0	2
	Motorist	0	0	4
	Palm Beach Road Ran	0	2	81
	Total	2	6	220
Total		18	25	869

Incident Detection Methods by Severity

		Current Week	Last Week	YTD
Level 1	Broward CCTV	0	0	5
	Broward Road Ranger	0	0	4
	District 4	0	0	15
	FHP	2	2	100
	I-95 Construction PIO	0	1	2
	ITMS	0	0	4
	ITMS CCTV	0	1	97
	Local Police	0	0	1
	Motorist	0	0	10
	Palm Beach Road Ran	4	8	195
	Road Watcher	0	0	1
	SmarTraveler (511)	0	0	1
	Total	6	12	435
	Level 2	Broward Road Ranger	0	1
Broward VideoWall		0	0	1
District 4		0	0	6
FHP		3	7	145
I-95 Construction PIO		0	0	1
ITMS		0	0	6
ITMS CCTV		2	0	92
Media		0	0	1

Total Events by Severity and Detection Method



		Current Week	Last Week	YTD
Level 2	Motorist	1	0	5
	Palm Beach Road Ran	1	4	69
	SmarTraveler (511)	0	0	3
	Total	7	12	332
Level 3	Broward CCTV	0	0	2
	Broward TMC	0	0	2
	Construction CEI	0	0	1
	District 4	0	0	1
	Emergency Operations	0	0	1
	FHP	3	1	45
	ITMS	0	0	2
	ITMS CCTV	0	0	31
	Media	0	0	1
	Motorist	0	0	1
	Palm Beach Road Ran	2	0	15
	Total	5	1	102
Total		18	25	869

Road Ranger / SIRV Performance Measures

Road Ranger / SIRV Performance By County

Values presented are:
 - Total Events with a RR/SIRV Response
 - Total RR/SIRV Responses,
 - Total Activities Performed

	Current We	Last Week	YTD
Palm Beach	603	643	15,771
	623	681	16,036
	659	729	17,460

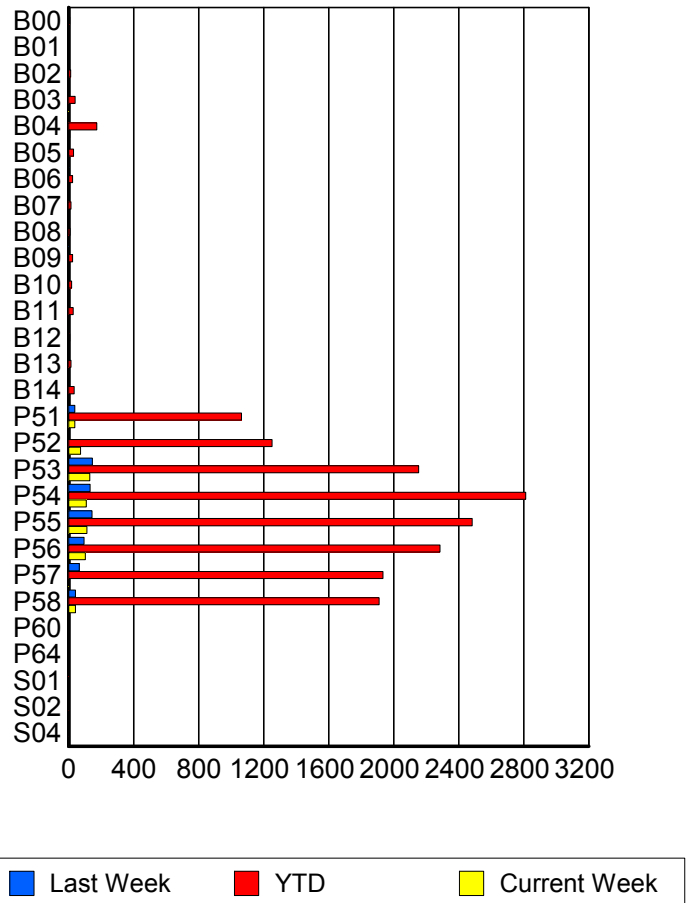
RR/SIRV Responses per County



Road Ranger / SIRV Performance By Truck

	Current We	Last Week	YTD
B00	0	1	6
	0	1	6
	0	1	6
B01	0	0	1
	0	0	1
	0	0	1
B02	0	0	13
	0	0	13
	0	0	14
B03	2	1	41
	2	1	41
	2	1	42
B04	6	2	173
	6	2	174
	6	3	198
B05	1	1	29
	1	1	30
	1	1	31
B06	0	3	24
	0	4	25
	0	6	27
B07	0	0	14
	0	0	14
	0	0	14
B08	0	0	8
	0	0	8
	0	0	9

RR/SIRV Responses per Truck



	Current We	Last Week	YTD
B09	0	2	23
	0	2	24
	0	2	24
B10	1	0	17
	1	0	18
	1	0	18
B11	0	1	28
	0	1	28
	0	1	29
B12	0	0	6
	0	0	6
	0	0	7
B13	0	0	14
	0	0	14
	0	0	15
B14	1	0	33
	1	0	34
	1	0	36
P51	38	39	1,054
	38	39	1,064
	39	40	1,112
P52	72	2	1,246
	73	2	1,251
	81	2	1,344
P53	130	141	2,126
	131	147	2,154
	132	156	2,275
P54	108	125	2,786
	109	132	2,813
	118	141	3,022
P55	110	144	2,465
	112	144	2,483
	123	155	2,663
P56	103	94	2,262
	103	95	2,285
	106	103	2,460
P57	3	65	1,915
	3	66	1,935
	4	68	2,067
P58	42	42	1,883
	43	43	1,911
	45	48	2,036
P60	0	0	1
	0	0	1
	0	0	1

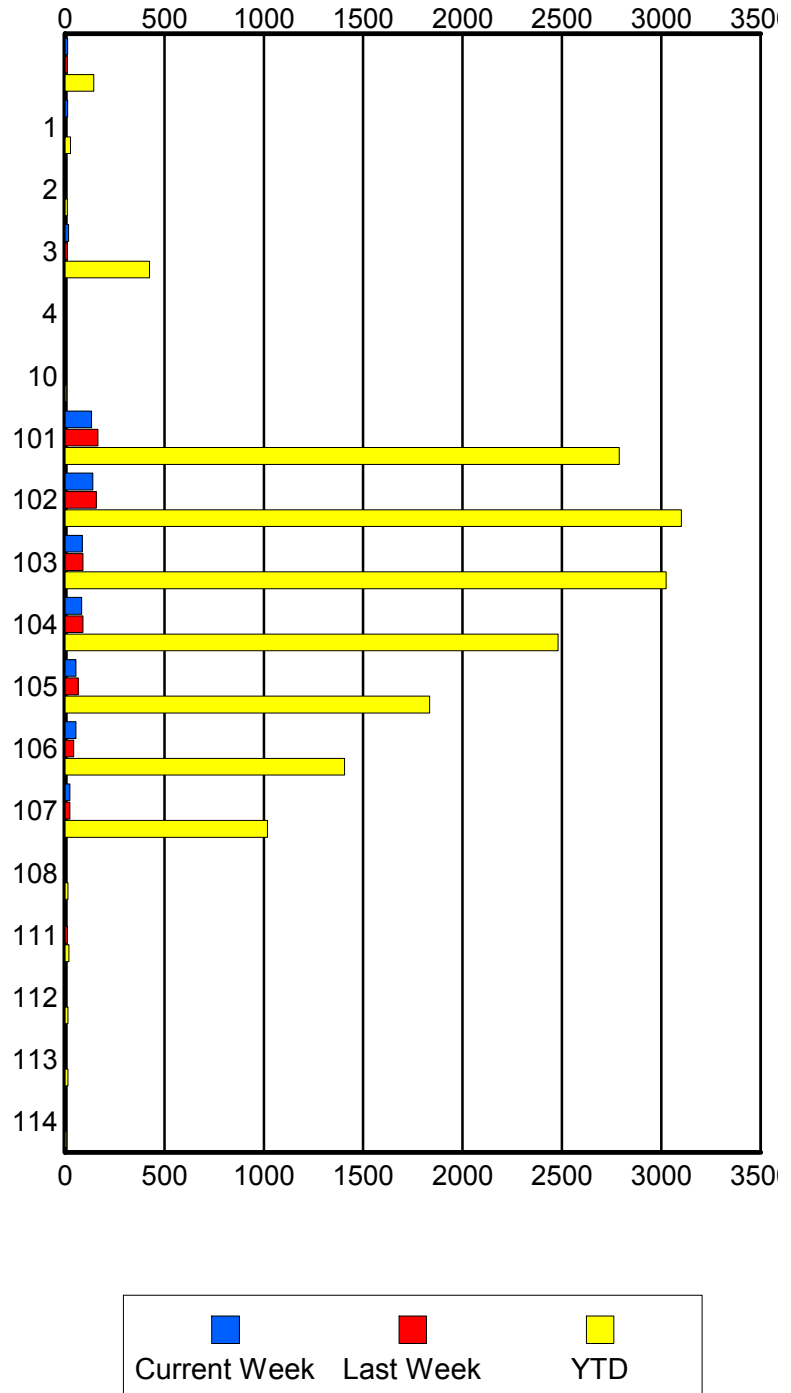
	Current We	Last Week	YTD
P64	0	0	1
	0	0	1
	0	0	1
S01	0	0	3
	0	0	3
	0	0	3
S02	0	1	3
	0	1	3
	0	1	3
S04	0	0	2
	0	0	2
	0	0	2

Road Ranger / SIRV Performance By Beat

	Current We	Last Week	YTD
	13	10	143
	13	11	144
	13	11	148
1	12	1	26
	13	1	27
	13	1	28
2	3	0	11
	3	0	11
	4	0	13
3	17	9	413
	18	11	425
	19	14	459
4	0	0	2
	0	0	2
	0	0	2
10	0	0	6
	0	0	6
	0	0	9
101	131	164	2,763
	133	166	2,789
	142	175	2,997
102	137	154	3,071
	139	158	3,101
	151	167	3,300
103	86	88	2,992
	86	90	3,024
	89	98	3,253
104	84	87	2,455
	84	90	2,481
	87	96	2,656
105	54	64	1,820
	54	66	1,835
	57	73	1,953
106	54	43	1,388
	54	44	1,406
	57	48	1,504
107	23	24	1,005
	24	25	1,018
	25	27	1,068
108	0	0	13
	0	0	14
	0	0	14
111	1	11	18
	1	12	19
	1	12	20

Values presented are:
 - Total Events with a RR/SIRV Response
 - Total RR/SIRV Responses,
 - Total Activities Performed

RR/SIRV Responses per Beat



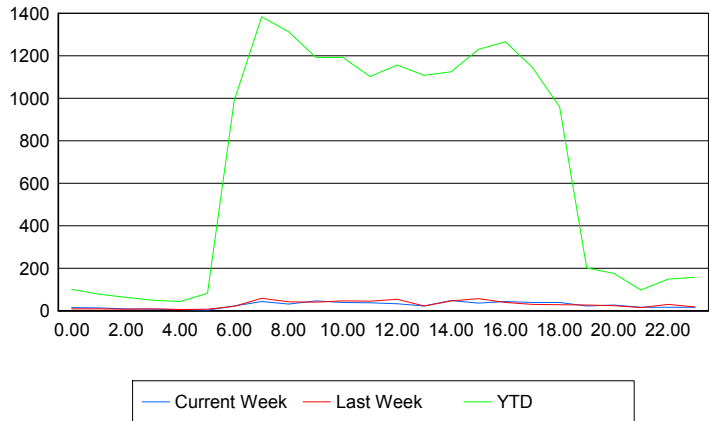
	Current We	Last Week	YTD
112	0	3	14
	0	3	15
	0	3	16
113	1	4	13
	1	4	14
	1	4	14
114	0	0	6
	0	0	6
	0	0	6

Road Ranger / SIRV Performance By Time of Day

Values presented are:
 - Total Events with a RR/SIRV Response
 - Total RR/SIRV Responses,
 - Total Activities Performed

	Current We	Last Week	YTD
12AM-1AM	15	8	96
	15	9	100
	18	10	106
1AM-2AM	12	8	74
	13	8	78
	16	8	83
2AM-3AM	9	6	61
	9	7	63
	9	7	67
3AM-4AM	7	8	46
	7	8	49
	7	8	50
4AM-5AM	3	5	38
	5	5	43
	6	8	48
5AM-6AM	2	7	77
	2	7	82
	2	7	86
6AM-7AM	21	20	948
	22	20	990
	23	20	1,041
7AM-8AM	41	56	1,318
	43	58	1,384
	46	65	1,487
8AM-9AM	30	37	1,256
	31	42	1,313
	33	45	1,405
9AM-10AM	46	37	1,152
	46	40	1,192
	47	42	1,296

Number of Responses / Hour of the Day



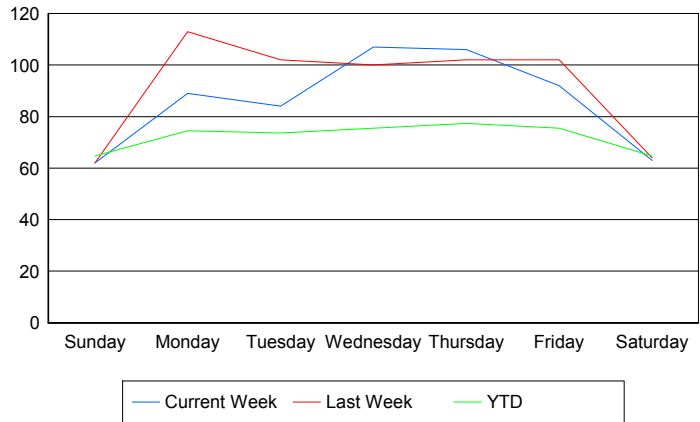
	Current We	Last Week	YTD
10AM-11AM	35	46	1,151
	39	46	1,193
	43	49	1,261
11AM-12PM	36	43	1,071
	37	45	1,102
	39	48	1,199
12PM-1PM	32	50	1,110
	33	54	1,157
	34	58	1,240
1PM-2PM	22	21	1,073
	22	22	1,108
	22	22	1,191
2PM-3PM	46	41	1,081
	47	46	1,125
	52	48	1,192
3PM-4PM	36	52	1,186
	36	57	1,230
	36	62	1,310
4PM-5PM	43	37	1,232
	43	38	1,266
	43	41	1,345
5PM-6PM	38	27	1,111
	38	30	1,144
	43	34	1,213
6PM-7PM	37	28	947
	38	28	959
	39	30	1,012
7PM-8PM	21	27	195
	22	27	201
	23	28	212
8PM-9PM	27	23	168
	27	24	175
	27	27	183
9PM-10PM	13	14	89
	16	14	97
	18	15	104
10PM-11PM	16	25	137
	16	29	148
	16	29	158
11PM-12AM	15	17	154
	16	17	157
	17	18	171

Road Ranger / SIRV Performance By Day of Week

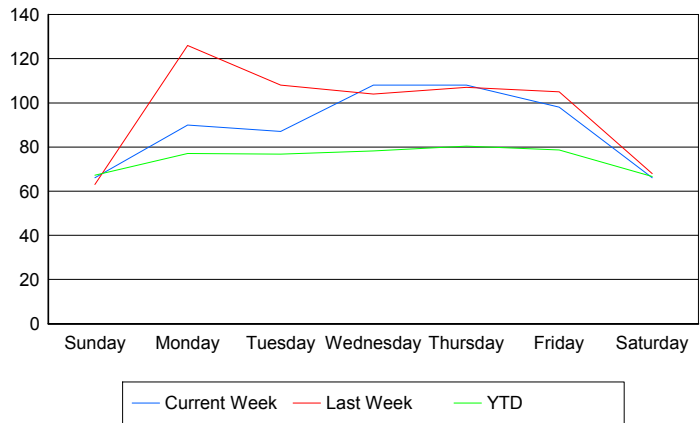
Values presented are:
 - Total Events with a RR/SIRV Response
 - Total RR/SIRV Responses,
 - Total Activities Performed

	Current We	Last Week	YTD
Sunday	62	62	387
	66	63	402
	72	66	431
Monday	89	113	2,928
	90	126	2,997
	95	133	3,198
Tuesday	84	102	2,896
	87	108	2,997
	94	116	3,208
Wednesday	107	100	3,001
	108	104	3,108
	112	115	3,329
Thursday	106	102	3,076
	108	107	3,160
	115	115	3,430
Friday	92	102	3,047
	98	105	3,170
	101	111	3,373
Saturday	63	64	452
	66	68	465
	70	73	491

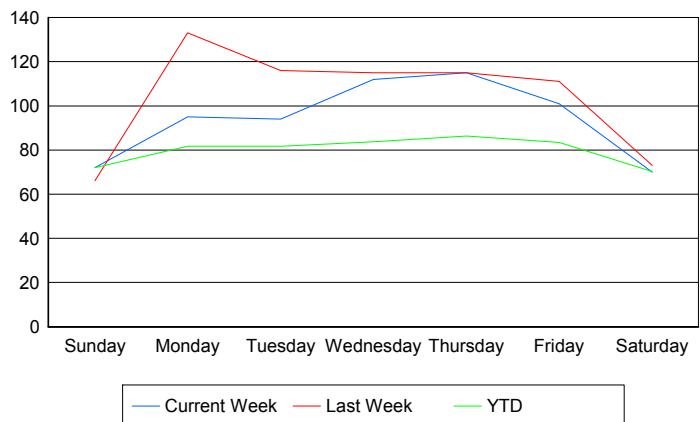
Avg # of events with a RR/SIRV Response per Day of the Week



Avg # of RR/SIRV Responses per Day of the Week



Avg # of RR/SIRV Activities Performed per Day of the Week



Road Ranger / SIRV Responses per Time of Day and Day of Week

