



Weekly Performance Measures Report Palm Beach County



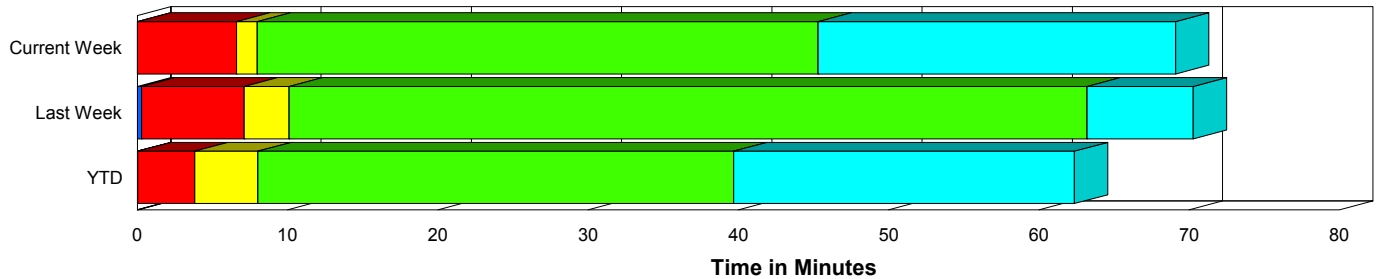
Created on:
November 09, 2009
9:20 am

Period From Nov 1, 2009 to Nov 7, 2009

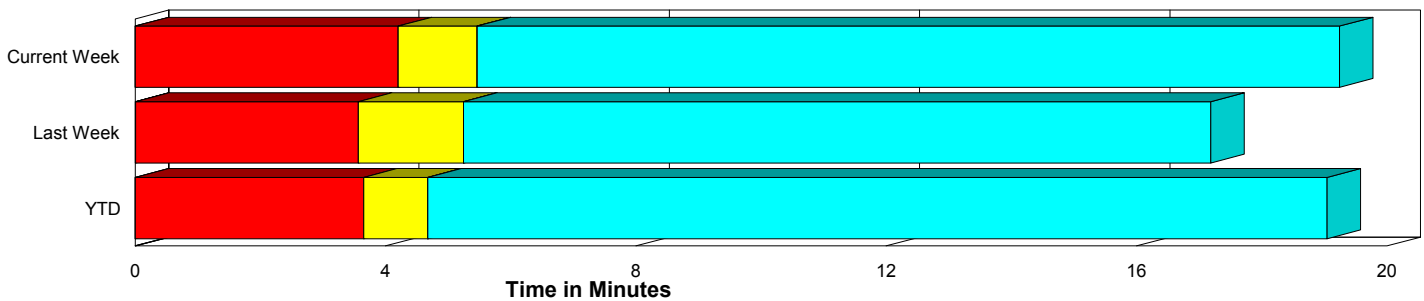
Performance Measures Summary

	Traffic Events (No Lanes Blocked)			Incidents (Lanes Blocked)		
	<u>This Week</u>	<u>Last Week</u>	<u>YTD</u>	<u>This Week</u>	<u>Last Week</u>	<u>YTD</u>
Number of Events	428	496	14,420	24	30	950
TMC Detection (min.)	0.00	0.01	0.00	0.00	0.29	0.04
TMC Verification (min.)	4.20	3.56	3.65	6.61	6.82	3.78
TMC Response (min.)	5.62	5.44	5.22	7.98	11.45	8.70
RR Dispatch Time (min.)	1.54	1.28	1.66	0.93	2.99	3.63
RR Response Time (min.)	4.31	4.18	3.66	7.05	8.43	5.05
Roadway Clearance (min.)				45.31	58.80	48.09
Event Clearance (min.)	19.40	17.39	19.59	69.08	54.53	70.08
# of Events w/ RR/SIRV	422	488	12,699	24	28	765
RR/SIRV Responses	422	488	12,699	24	28	765
RR/SIRV Activities	442	515	13,786	31	33	1,099

Incident Clearance Time-Line



Traffic Event (Non-Lane Blockage) Time-Line



■ Avg. TMC Detection Time	■ Avg. Time from TMC Response to Roadway Clearance*
■ Avg. Time from TMC Detection to TMC Verification	■ Avg. Time from Roadway Clearance to Incident/Event Clearance**
■ Avg. Time from TMC Verification to TMC Response	

* Roadway clearance equals all travel lanes open

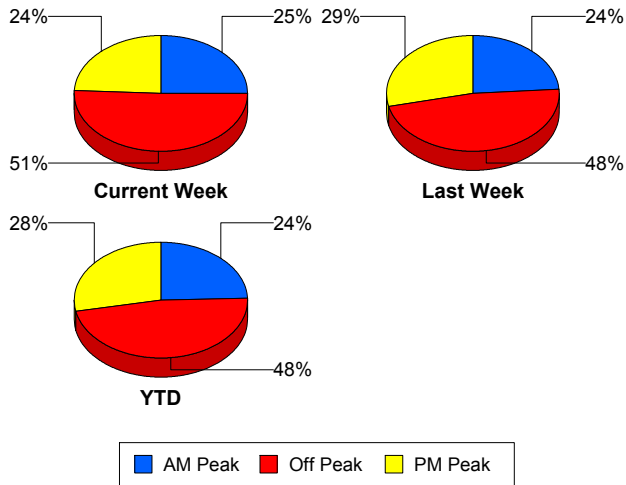
** Incident clearance equals time when last responder has left the scene

Performance Measures by Peak Period

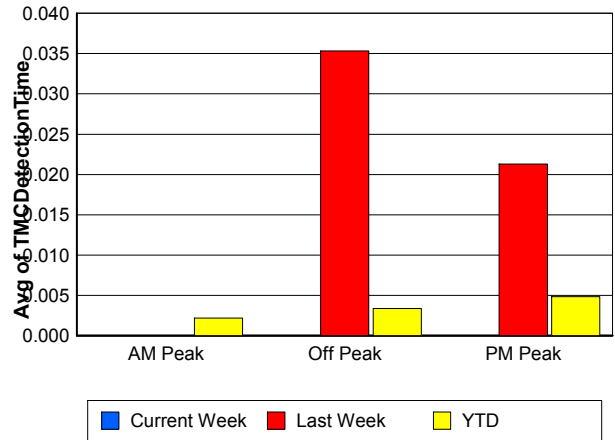
Note: AM peak period is defined as 6am to 10am and PM peak period is defined as 3pm to 7pm.

	AM Peak			Off Peak			PM Peak		
	Current Week	Last Week	YTD	Current Week	Last Week	YTD	Current Week	Last Week	YTD
Number of Events	113	125	3,744	230	250	7,328	109	151	4,298
Number of Incidents	10	5	276	12	20	443	2	5	231
TMC Detection (min.)	0.00	0.00	0.00	0.00	0.04	0.00	0.00	0.02	0.00
TMC Verification (min.)	2.88	2.26	3.12	4.50	4.31	3.41	5.48	4.05	4.55
TMC Response (min.)	4.76	5.30	4.57	6.17	6.55	6.04	5.85	4.76	5.30
RR Dispatch Time (min.)	0.77	1.05	1.24	1.86	1.94	2.35	1.53	0.70	1.42
RR Response Time (min.)	4.05	4.30	3.38	4.72	4.63	3.85	4.30	4.07	3.89
Event Clearance (min.)	20.76	21.13	22.11	20.94	20.75	23.99	25.68	16.09	21.05
Roadway Clearance (min.)	48.87	33.32	39.80	35.07	68.36	49.43	88.99	46.02	55.42
Incident Clearance (min.)	75.39	41.55	67.31	50.22	58.25	69.08	150.72	52.60	75.30
# of Events w/ RR/SIRV	111	121	3,589	230	247	5,808	105	148	4,067
RR/SIRV Responses	111	121	3,589	230	247	5,808	105	148	4,067
RR/SIRV Activities	117	133	4,040	248	259	6,410	108	156	4,435

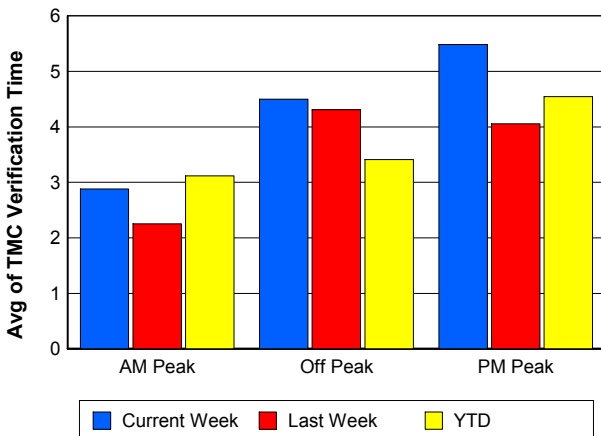
Number of Events / Peak Period



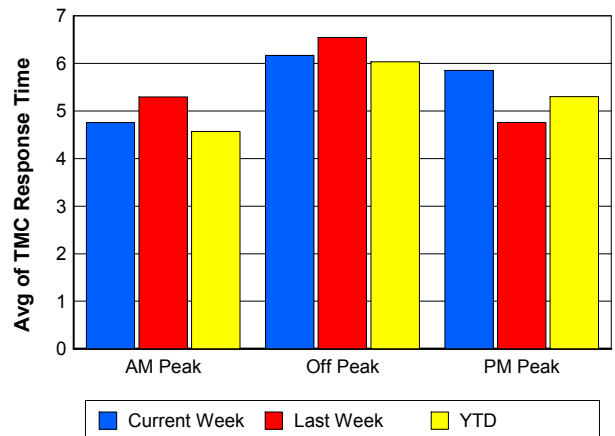
TMC Detection Time



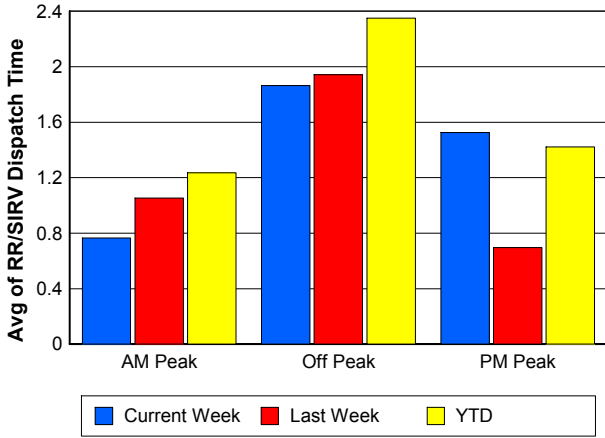
TMC Verification Time



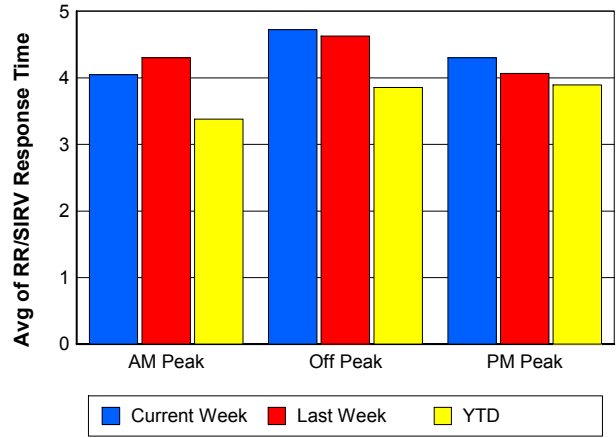
TMC Response Time



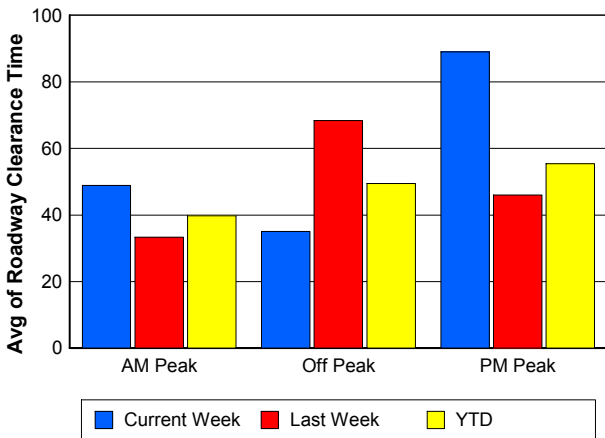
Road Ranger / SIRV Dispatch Time



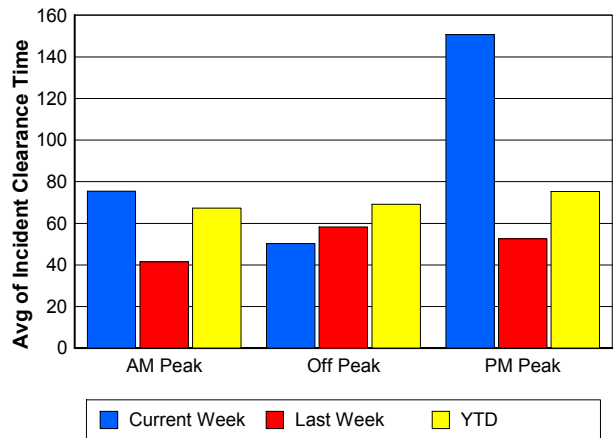
Road Ranger / SIRV Response Time



Roadway Clearance Time (2A)



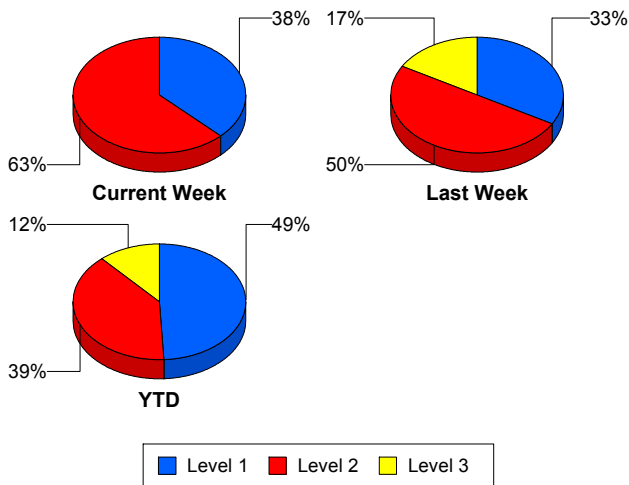
Incident Clearance Time (3B)



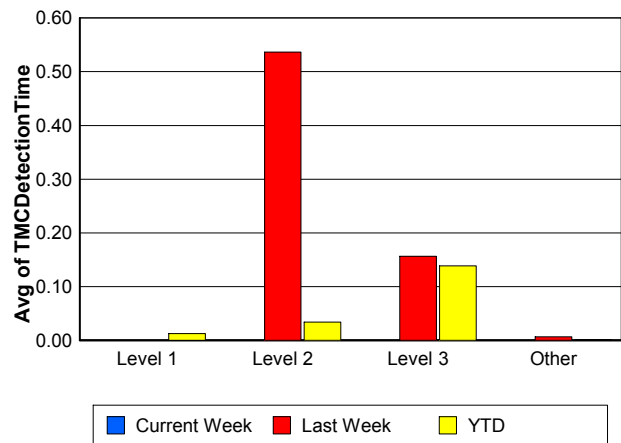
Performance Measures by Severity

	Level 1			Level 2			Level 3		Other		
	<u>This Week</u>	<u>Last Week</u>	<u>YTD</u>	<u>This Week</u>	<u>Last Week</u>	<u>YTD</u>	<u>Last Week</u>	<u>YTD</u>	<u>This Week</u>	<u>Last Week</u>	<u>YTD</u>
Number of Events	9	10	466	15	15	372	5	112	428	496	14,420
Number of Incidents	9	10	466	15	15	372	5	112	0	0	0
TMC Detection (min.)	0.00	0.00	0.01	0.00	0.54	0.03	0.16	0.14	0.00	0.01	0.00
TMC Verification (min.)	6.68	4.58	2.31	6.57	9.61	5.42	2.94	4.47	4.20	3.56	3.65
TMC Response (min.)	7.04	6.14	4.33	8.54	13.82	9.60	14.76	28.05	5.62	5.44	5.22
RR Dispatch Time (min.)	0.92	0.95	1.14	0.94	1.77	2.65	10.08	20.72	1.54	1.28	1.66
RR Resp. Time (min.)	6.12	5.31	3.22	7.61	12.40	6.95	4.68	7.33	4.31	4.18	3.66
Event Clearance (min.)	62.24	28.03	41.98	73.19	60.79	71.17	88.71	183.39	19.40	17.39	19.59
Roadway Clear. (min.)	18.66	17.13	14.76	61.30	54.87	53.62	153.92	168.41			
Incident Clearance (min.)	62.24	28.03	41.98	73.19	60.79	71.17	88.71	183.39			
# of Events w/ RR/SIRV	9	9	398	15	14	292	5	75	422	488	12,699
RR/SIRV Responses	9	9	398	15	14	292	5	75	422	488	12,699
RR/SIRV Activities	10	12	509	21	16	466	5	124	442	515	13,786

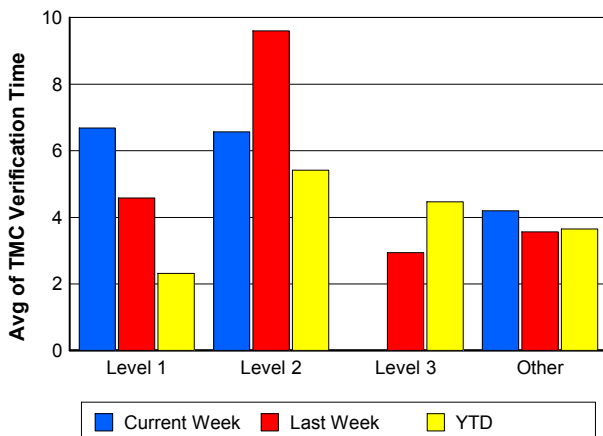
Number of Events / Severity



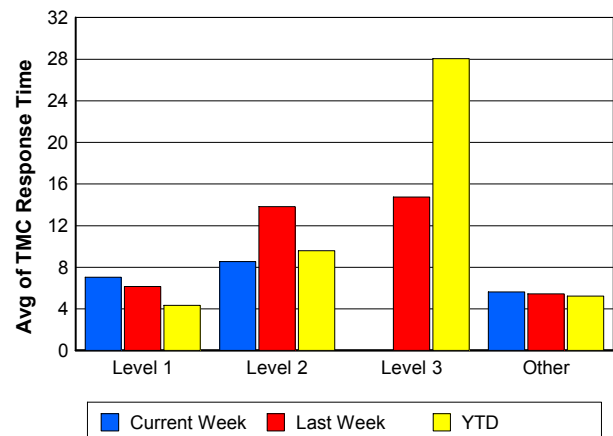
TMC Detection Time



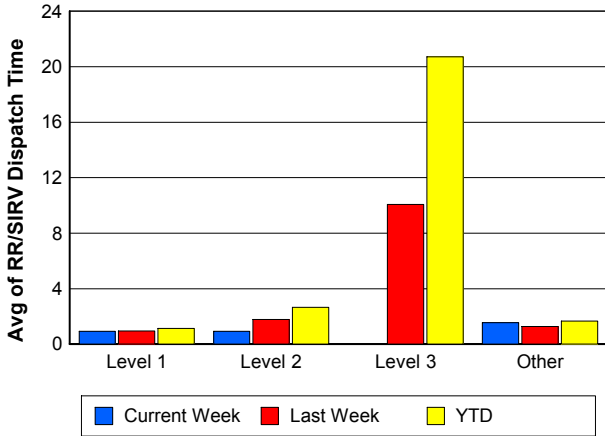
TMC Verification Time



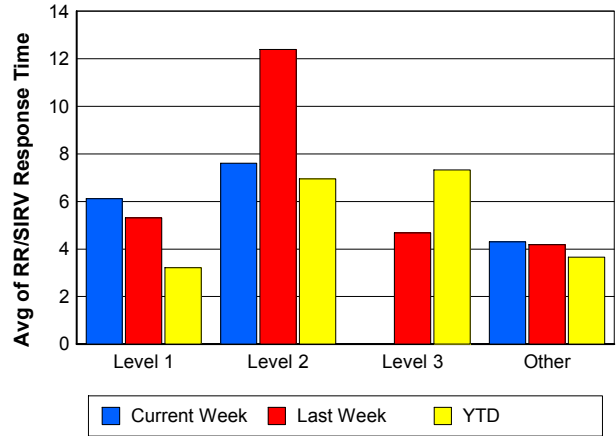
TMC Response Time



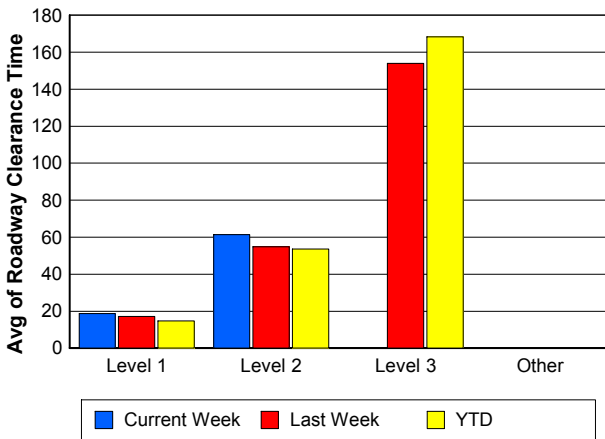
Road Ranger / SIRV Dispatch Time



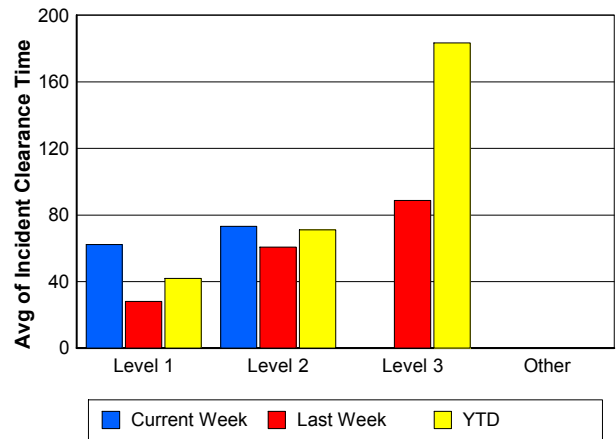
Road Ranger / SIRV Response Time



Roadway Clearance Time (2A)



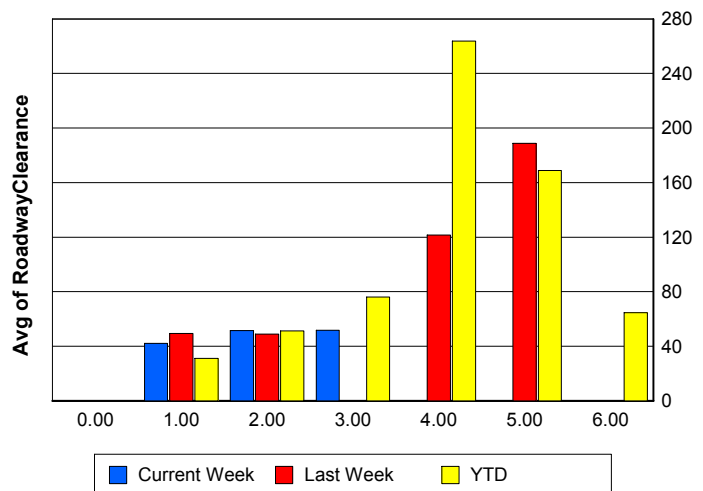
Incident Clearance Time (3B)



Roadway Clearance by Maximum Number of Lanes Blocked

	Current Week	Last Week	YTD
0			
1	42.20	49.45	31.15
2	51.52	48.83	51.27
3	51.62	0.00	76.06
4	0.00	121.52	263.87
5	0.00	188.78	168.97
6	0.00	0.00	64.70

Roadway Clearance Time (2A)



Performance Measures by Roadway

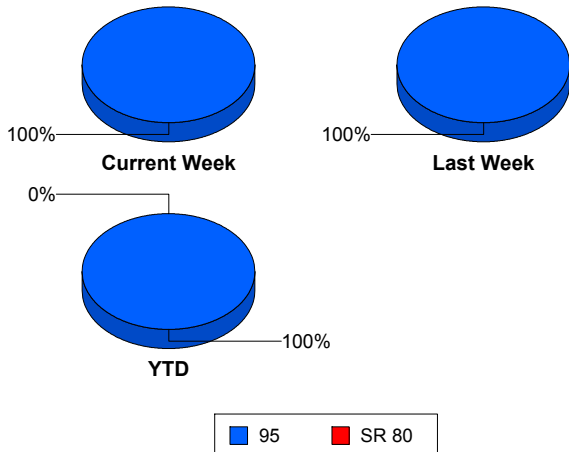
95

	<u>Current Week</u>	<u>Last Week</u>	<u>YTD</u>
Number of Events	452	526	15,366
Number of Incidents	24	30	947
TMC Detection (min.)	0.00	0.02	0.00
TMC Verification (min.)	4.33	3.75	3.66
TMC Response (min.)	5.75	5.73	5.42
RR Dispatch Time (min.)	1.51	1.38	1.77
RR Resp. Time (min.)	4.46	4.39	3.74
Event Clearance (min.)	22.04	19.50	22.35
Roadway Clear. (min.)	45.31	58.80	42.57
Incident Clearance (min.)	69.08	54.53	64.45
# of Events w/ RR/SIRV	446	516	13,464
RR/SIRV Responses	446	516	13,464
RR/SIRV Activities	473	548	14,885

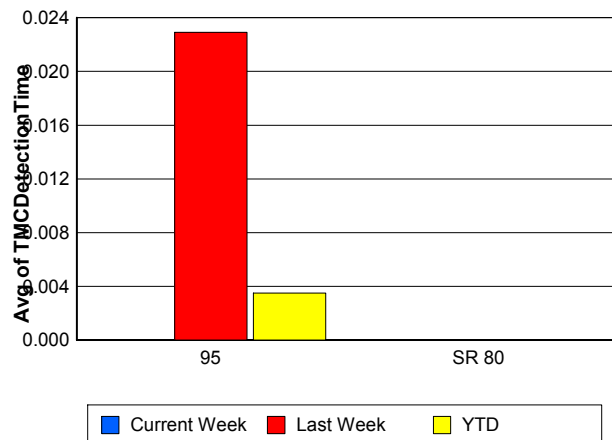
SR 80

	<u>YTD</u>
Number of Events	4
Number of Incidents	3
TMC Detection (min.)	0.00
TMC Verification (min.)	0.00
TMC Response (min.)	
RR Dispatch Time (min.)	
RR Resp. Time (min.)	
Event Clearance (min.)	1,409.98
Roadway Clear. (min.)	1,789.50
Incident Clearance (min.)	1,847.09
# of Events w/ RR/SIRV	0
RR/SIRV Responses	0
RR/SIRV Activities	0

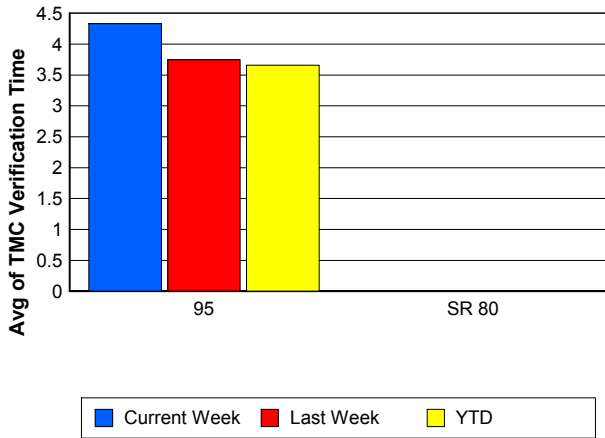
Number of Events / Roadway



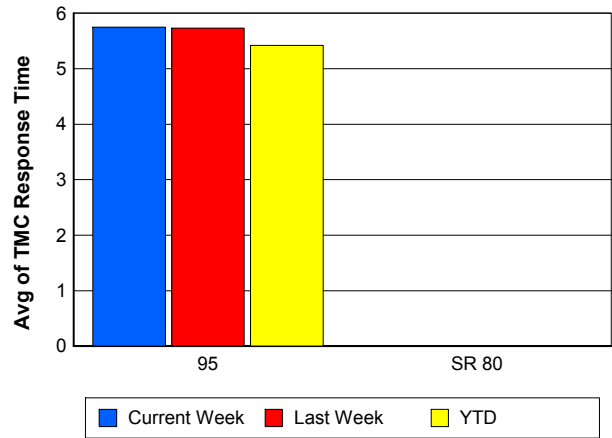
TMC Detection Time



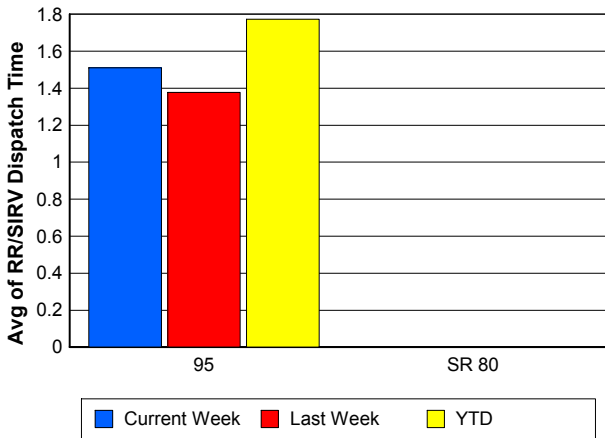
TMC Verification Time



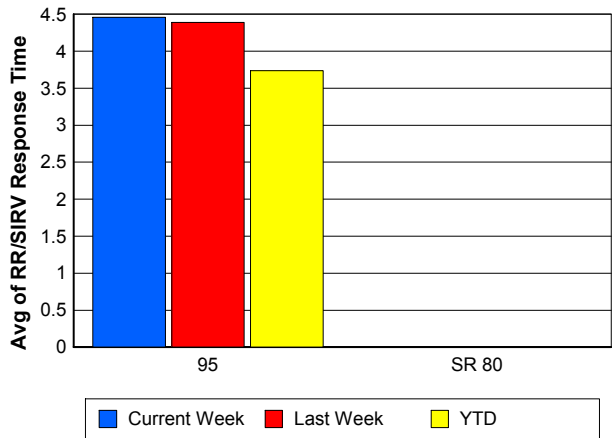
TMC Response Time



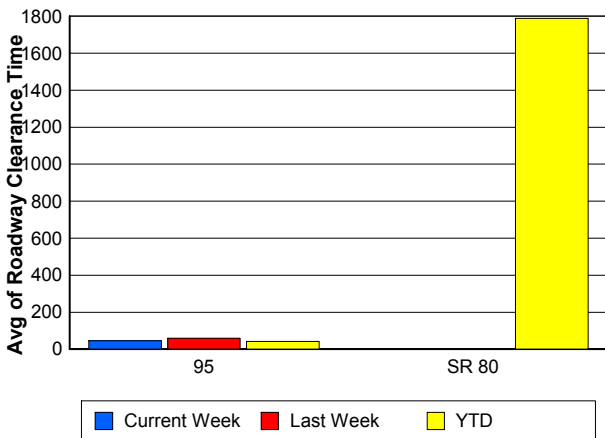
Road Ranger / SIRV Dispatch Time



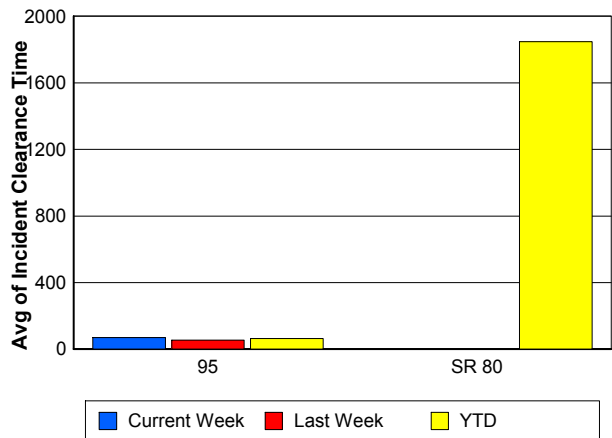
Road Ranger / SIRV Response Time



Roadway Clearance Time (2A)



Incident Clearance Time (3B)



Performance Measures by Event Type

Accident

	<u>Current Week</u>	<u>Last Week</u>	<u>YTD</u>
Number of Events	42	36	1,302
Number of Incidents	19	12	617
TMC Detection (min.)	0.00	0.09	0.02
TMC Verification (min.)	6.27	7.00	4.66
TMC Response (min.)	7.25	8.59	8.16
RR Dispatch Time (min.)	2.13	1.98	2.62
RR Response Time (min.)	5.08	6.61	5.52
Event Clearance (min.)	60.61	56.77	58.77
Roadway Clearance (min.)	48.09	64.46	45.54
Incident Clearance (min.)	75.41	73.14	73.18
# of Events w/ RR/SIRV	42	36	1,075
RR/SIRV Assists	42	36	1,075
RR/SIRV Activities	47	41	1,364

Debris on Roadway

	<u>Current Week</u>	<u>Last Week</u>	<u>YTD</u>
Number of Events	25	32	1,096
Number of Incidents	1	2	37
TMC Detection (min.)	0.00	0.00	0.00
TMC Verification (min.)	4.84	10.08	7.62
TMC Response (min.)	5.91	10.07	7.87
RR Dispatch Time (min.)	1.60	2.29	1.85
RR Response Time (min.)	4.31	7.78	6.03
Event Clearance (min.)	9.82	13.42	12.03
Roadway Clearance (min.)	47.45	26.62	21.35
Incident Clearance (min.)	47.33	28.32	24.41
# of Events w/ RR/SIRV	25	32	1,079
RR/SIRV Assists	25	32	1,079
RR/SIRV Activities	28	35	1,156

Disabled Vehicle

	<u>Current Week</u>	<u>Last Week</u>	<u>YTD</u>
Number of Events	368	426	11,611
Number of Incidents	3	5	197
TMC Detection (min.)	0.00	0.00	0.00
TMC Verification (min.)	4.13	3.19	3.47
TMC Response (min.)	5.51	4.79	4.64
RR Dispatch Time (min.)	1.42	1.18	1.49
RR Response Time (min.)	4.35	3.66	3.25
Event Clearance (min.)	18.68	16.38	17.93
Roadway Clearance (min.)	30.68	31.26	26.44
Incident Clearance (min.)	47.18	43.97	36.54
# of Events w/ RR/SIRV	364	421	10,859
RR/SIRV Assists	364	421	10,859
RR/SIRV Activities	385	452	11,940

Emergency Vehicles

	<u>YTD</u>
Number of Events	15
Number of Incidents	9
TMC Detection (min.)	0.00
TMC Verification (min.)	2.12
TMC Response (min.)	9.04
RR Dispatch Time (min.)	3.11
RR Response Time (min.)	5.54
Event Clearance (min.)	47.51
Roadway Clearance (min.)	41.91
Incident Clearance (min.)	47.66
# of Events w/ RR/SIRV	7
RR/SIRV Assists	7
RR/SIRV Activities	9

Other

	<u>Current Week</u>	<u>Last Week</u>	<u>YTD</u>
Number of Events	15	17	874
Number of Incidents	0	0	7
TMC Detection (min.)	0.00	0.00	0.00
TMC Verification (min.)	3.08	0.00	1.27
TMC Response (min.)	8.56	19.26	15.12
RR Dispatch Time (min.)	2.12	0.89	7.45
RR Response Time (min.)	6.49	18.55	6.77
Event Clearance (min.)	16.62	15.89	35.38
Roadway Clearance (min.)			40.35
Incident Clearance (min.)			52.93
# of Events w/ RR/SIRV	13	14	301
RR/SIRV Assists	13	14	301
RR/SIRV Activities	10	8	256

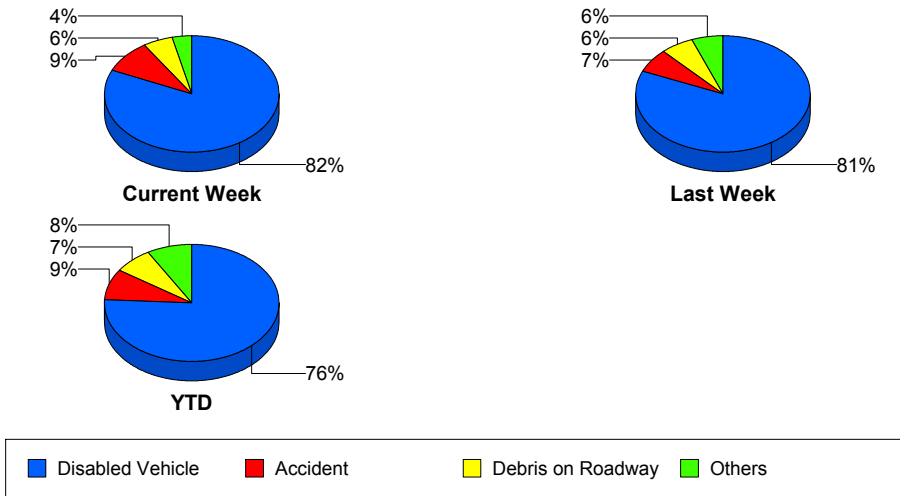
Police Activity

	<u>Current Week</u>	<u>Last Week</u>	<u>YTD</u>
Number of Events	1	13	351
Number of Incidents	1	11	54
TMC Detection (min.)	0.00	0.68	0.08
TMC Verification (min.)	0.00	2.94	0.53
TMC Response (min.)	0.00	11.50	12.34
RR Dispatch Time (min.)	0.00	5.32	5.71
RR Response Time (min.)	0.00	5.34	6.45
Event Clearance (min.)	36.40	39.25	28.56
Roadway Clearance (min.)	34.35	70.99	69.58
Incident Clearance (min.)	36.40	43.78	85.42
# of Events w/ RR/SIRV	1	11	50
RR/SIRV Assists	1	11	50
RR/SIRV Activities	2	10	56

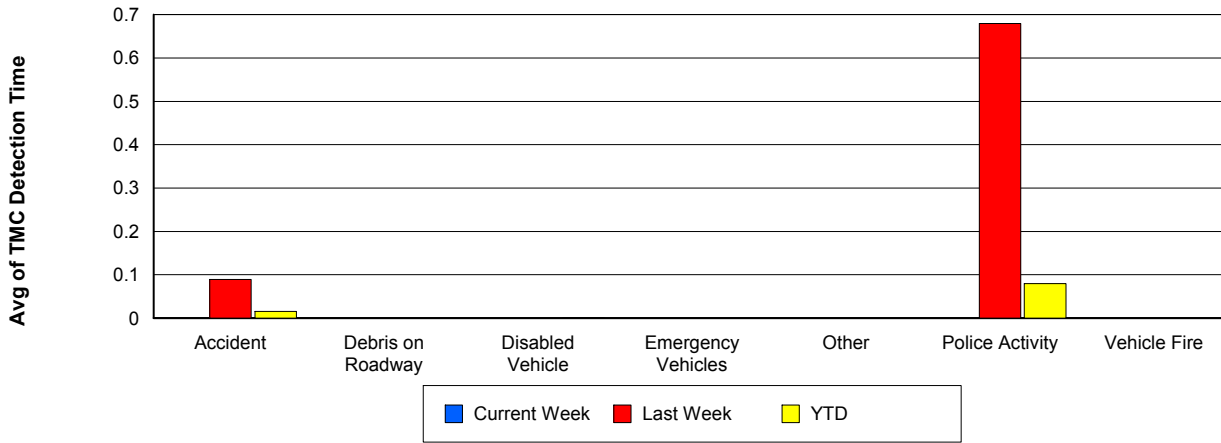
Vehicle Fire

	<u>YTD</u>
Number of Events	36
Number of Incidents	28
TMC Detection (min.)	0.00
TMC Verification (min.)	3.20
TMC Response (min.)	18.83
RR Dispatch Time (min.)	13.13
RR Response Time (min.)	5.71
Event Clearance (min.)	85.56
Roadway Clearance (min.)	67.08
Incident Clearance (min.)	93.23
# of Events w/ RR/SIRV	23
RR/SIRV Assists	23
RR/SIRV Activities	33

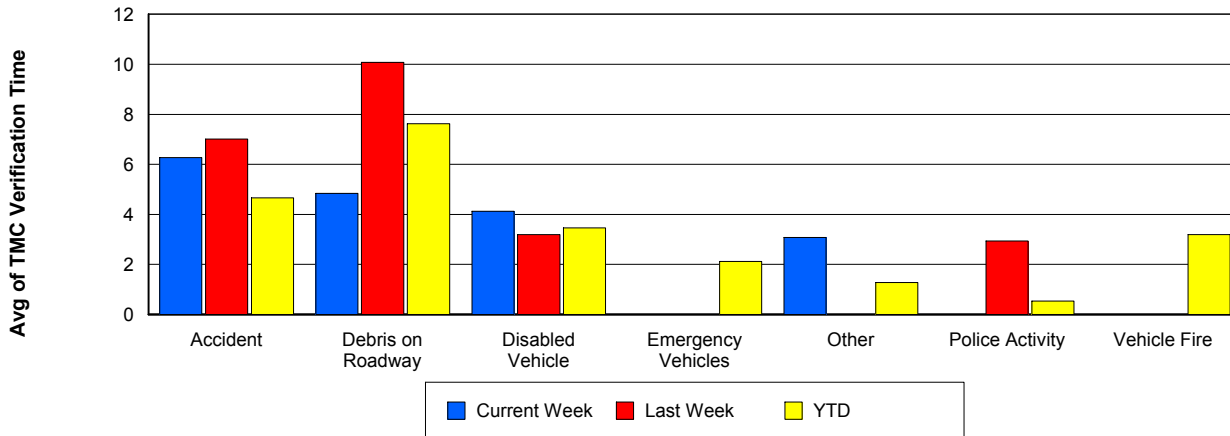
Number of Events / Event Type



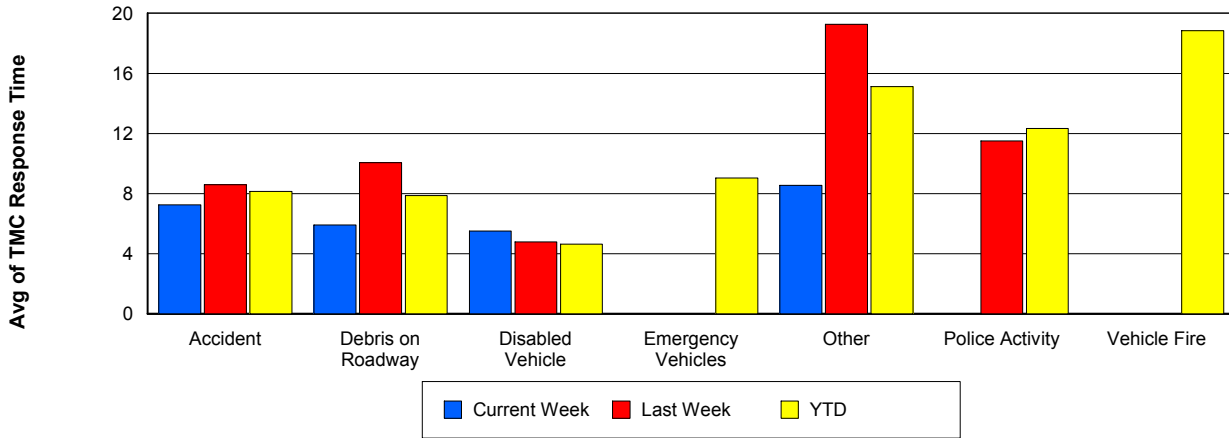
TMC Detection Time



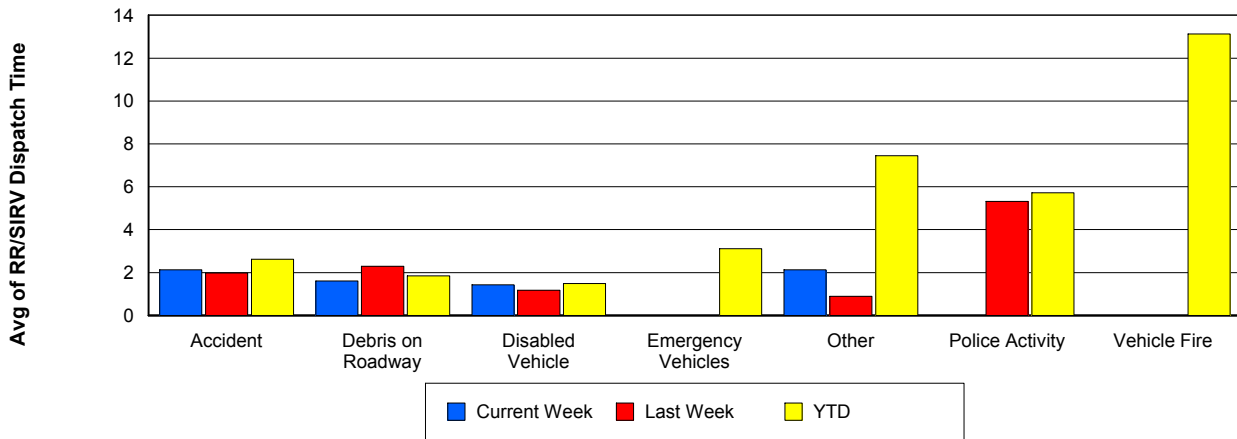
TMC Verification Time



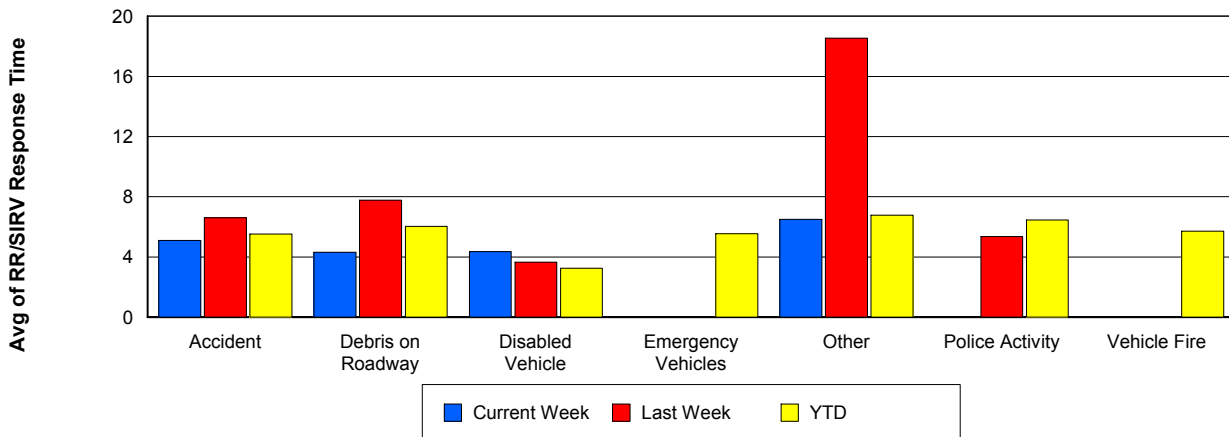
TMC Response Time



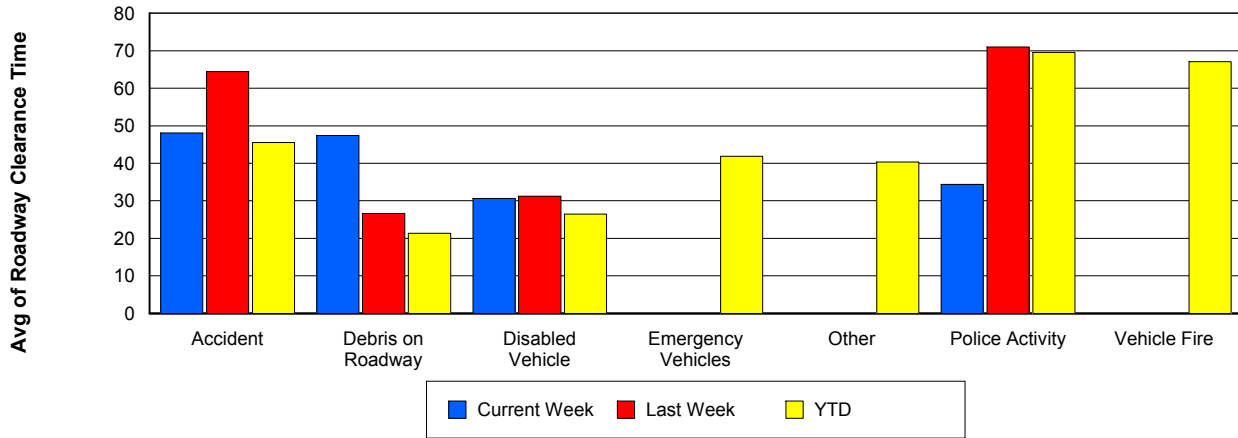
Road Ranger / SIRV Dispatch Time



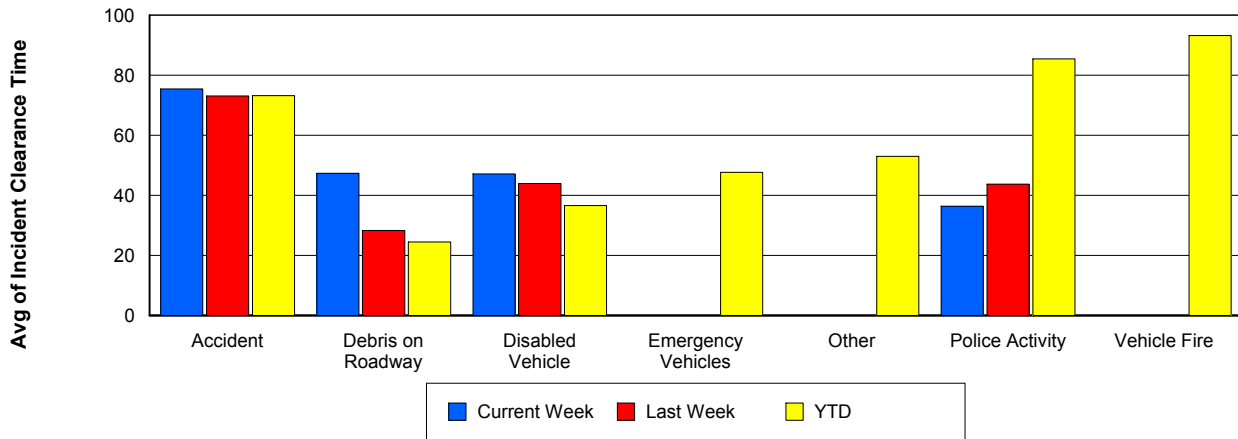
Road Ranger / SIRV Response Time



Roadway Clearance Time (2A)



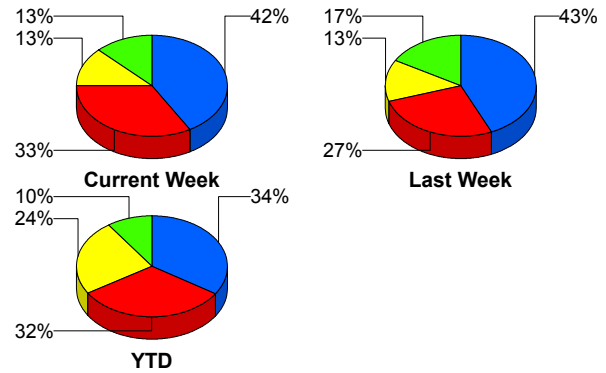
Incident Clearance Time (3B)



Incident Detection Methods

	Current Week	Last Week	YTD
Broward CCTV	0	0	8
Broward Road Ranger	0	0	8
Broward TMC	1	1	6
Broward VideoWall	0	0	1
Construction CEI	0	1	2
District 4	0	0	23
Emergency Operations	0	0	1
FDOT Maintenance	1	1	2
FHP	10	13	324
I-95 Construction PIO	0	0	3
ITMS	0	1	13
ITMS CCTV	3	4	229
Local Police	0	0	1
Media	0	0	2
Motorist	0	1	17
Palm Beach Road Ran	8	8	304
Road Watcher	1	0	2
SmarTraveler (511)	0	0	4
Total	24	30	950

Total Incidents by Detection Method



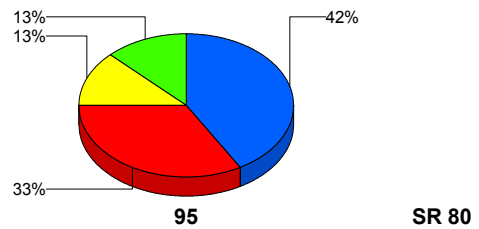
■ FHP
 ■ Palm Beach Road Ranger
 ■ ITMS CCTV
 ■ Others

Incident Detection Methods by Roadway

		Current Week	Last Week	YTD
95	Broward CCTV	0	0	8
	Broward Road Ranger	0	0	8
	Broward TMC	1	1	6
	Broward VideoWall	0	0	1
	Construction CEI	0	1	2
	District 4	0	0	23
	FDOT Maintenance	1	1	2
	FHP	10	13	323
	I-95 Construction PIO	0	0	3
	ITMS	0	1	12
	ITMS CCTV	3	4	229
	Local Police	0	0	1
	Media	0	0	2
	Motorist	0	1	17
	Palm Beach Road Ran	8	8	304
	Road Watcher	1	0	2
	SmarTraveler (511)	0	0	4
Total	24	30	947	
SR 80	Emergency Operations	0	0	1
	FHP	0	0	1
	ITMS	0	0	1
	Total	0	0	3
Total	24	30	950	

Total Events by Roadway and Detection Method

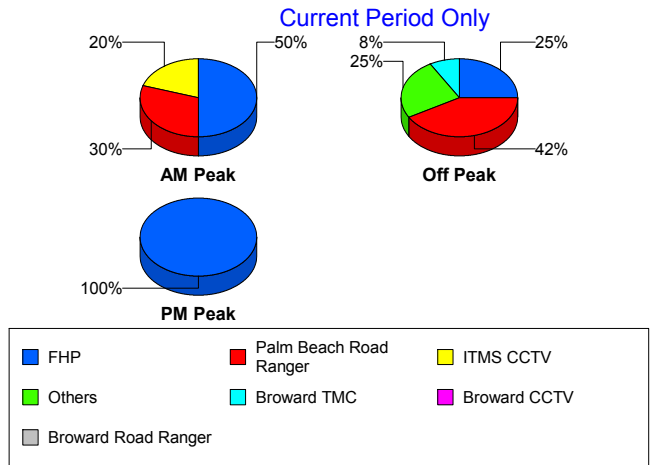
Current Period Only



Incident Detection Methods by Peak Period

		Current Week	Last Week	YTD
AM Peak	Broward CCTV	0	0	2
	Broward Road Ranger	0	0	3
	Broward TMC	0	0	2
	Construction CEI	0	1	1
	District 4	0	0	11
	FHP	5	1	98
	I-95 Construction PIO	0	0	1
	ITMS	0	0	5
	ITMS CCTV	2	1	42
	Motorist	0	1	8
	Palm Beach Road Ran	3	1	99
	Road Watcher	0	0	1
	SmarTraveler (511)	0	0	3
	Total	10	5	276
	Off Peak	Broward CCTV	0	0
Broward Road Ranger		0	0	2
Broward TMC		1	1	4
Broward VideoWall		0	0	1
Construction CEI		0	0	1
District 4		0	0	9
FDOT Maintenance		1	1	2
FHP		3	8	160
I-95 Construction PIO		0	0	2
ITMS		0	1	7
ITMS CCTV		1	3	122
Motorist		0	0	5
Palm Beach Road Ran		5	6	122
Road Watcher		1	0	1
SmarTraveler (511)		0	0	1
Total	12	20	443	
PM Peak	Broward CCTV	0	0	2

Total Events by Peak Period and Detection Method

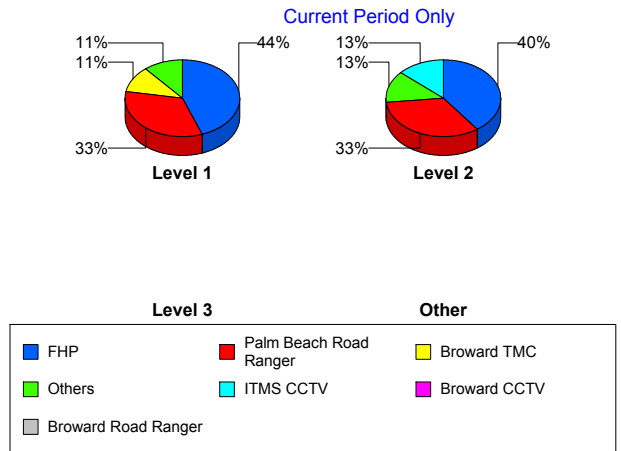


		Current Week	Last Week	YTD
PM Peak	Broward Road Ranger	0	0	3
	District 4	0	0	3
	Emergency Operations	0	0	1
	FHP	2	4	66
	ITMS	0	0	1
	ITMS CCTV	0	0	65
	Local Police	0	0	1
	Media	0	0	2
	Motorist	0	0	4
	Palm Beach Road Ran	0	1	83
	Total	2	5	231
Total	24	30	950	

Incident Detection Methods by Severity

		Current Week	Last Week	YTD
Level 1	Broward CCTV	0	0	6
	Broward Road Ranger	0	0	4
	Broward TMC	1	0	2
	District 4	0	0	16
	FHP	4	3	110
	I-95 Construction PIO	0	0	2
	ITMS	0	1	5
	ITMS CCTV	1	1	99
	Local Police	0	0	1
	Motorist	0	1	11
	Palm Beach Road Ran	3	4	208
	Road Watcher	0	0	1
	SmarTraveler (511)	0	0	1
	Total	9	10	466
Level 2	Broward Road Ranger	0	0	3
	Broward TMC	0	1	2
	Broward VideoWall	0	0	1

Total Events by Severity and Detection Method



		Current Week	Last Week	YTD
Level 2	Construction CEI	0	1	1
	District 4	0	0	6
	FDOT Maintenance	1	1	2
	FHP	6	6	163
	I-95 Construction PIO	0	0	1
	ITMS	0	0	6
	ITMS CCTV	2	3	97
	Media	0	0	1
	Motorist	0	0	5
	Palm Beach Road Ran	5	3	80
	Road Watcher	1	0	1
	SmarTraveler (511)	0	0	3
	Total	15	15	372
Level 3	Broward CCTV	0	0	2
	Broward Road Ranger	0	0	1
	Broward TMC	0	0	2
	Construction CEI	0	0	1
	District 4	0	0	1
	Emergency Operations	0	0	1
	FHP	0	4	51
	ITMS	0	0	2
	ITMS CCTV	0	0	33
	Media	0	0	1
	Motorist	0	0	1
	Palm Beach Road Ran	0	1	16
	Total	0	5	112
Total		24	30	950

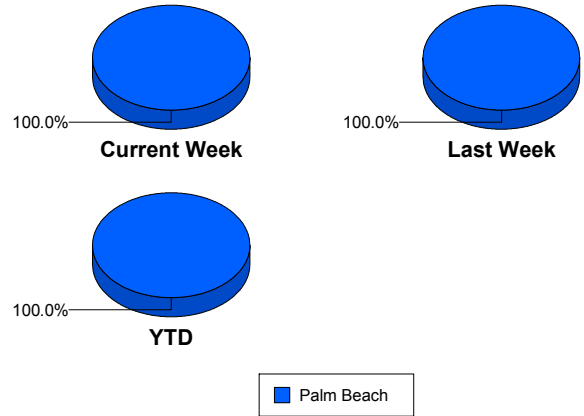
Road Ranger / SIRV Performance Measures

Road Ranger / SIRV Performance By County

RR/SIRV Responses per County

Values presented are: - Total Events with a RR/SIRV Response - Total RR/SIRV Responses, - Total Activities Performed

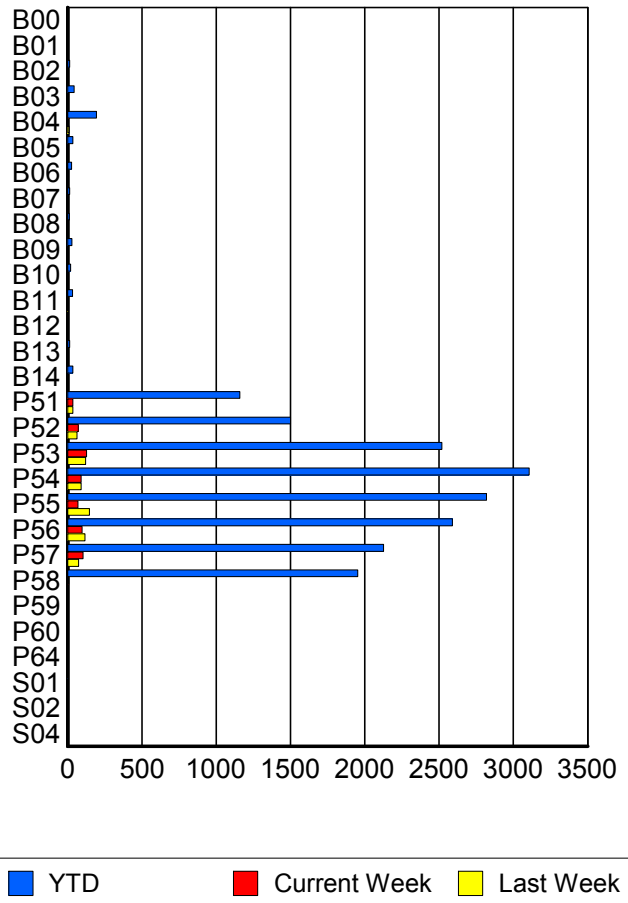
	Current We	Last Week	YTD
Palm Beach	604	647	17,630
	622	662	17,937
	650	706	19,500



Road Ranger / SIRV Performance By Truck

	Current We	Last Week	YTD
B00	0	0	6
	0	0	6
	0	0	6
B01	0	0	1
	0	0	1
	0	0	1
B02	0	0	14
	0	0	14
	0	0	15
B03	2	2	45
	2	2	45
	2	2	46
B04	6	9	193
	6	9	194
	6	9	218
B05	4	0	33
	5	0	35
	5	0	36
B06	1	0	25
	1	0	26
	1	0	28
B07	0	0	14
	0	0	14
	0	0	14
B08	0	2	11
	0	2	11
	0	3	14

**RR/SIRV
Responses per
Truck**



	Current We	Last Week	YTD
B09	3	0	27
	3	0	28
	3	0	29
B10	1	0	19
	1	0	20
	1	0	20
B11	0	3	33
	0	3	33
	0	3	34
B12	0	0	6
	0	0	6
	0	0	7
B13	0	0	14
	0	0	14
	0	0	15
B14	1	0	35
	1	0	36
	1	0	38
P51	36	35	1,149
	36	36	1,160
	36	40	1,212
P52	71	63	1,495
	71	63	1,501
	73	66	1,609
P53	127	119	2,485
	128	121	2,518
	133	134	2,665
P54	89	90	3,074
	92	91	3,106
	99	97	3,335
P55	69	145	2,799
	69	146	2,819
	73	153	3,018
P56	96	114	2,560
	97	116	2,589
	103	124	2,784
P57	102	73	2,105
	103	73	2,126
	107	75	2,264
P58	7	0	1,924
	7	0	1,953
	7	0	2,080
P59	0	0	1
	0	0	1
	0	0	2

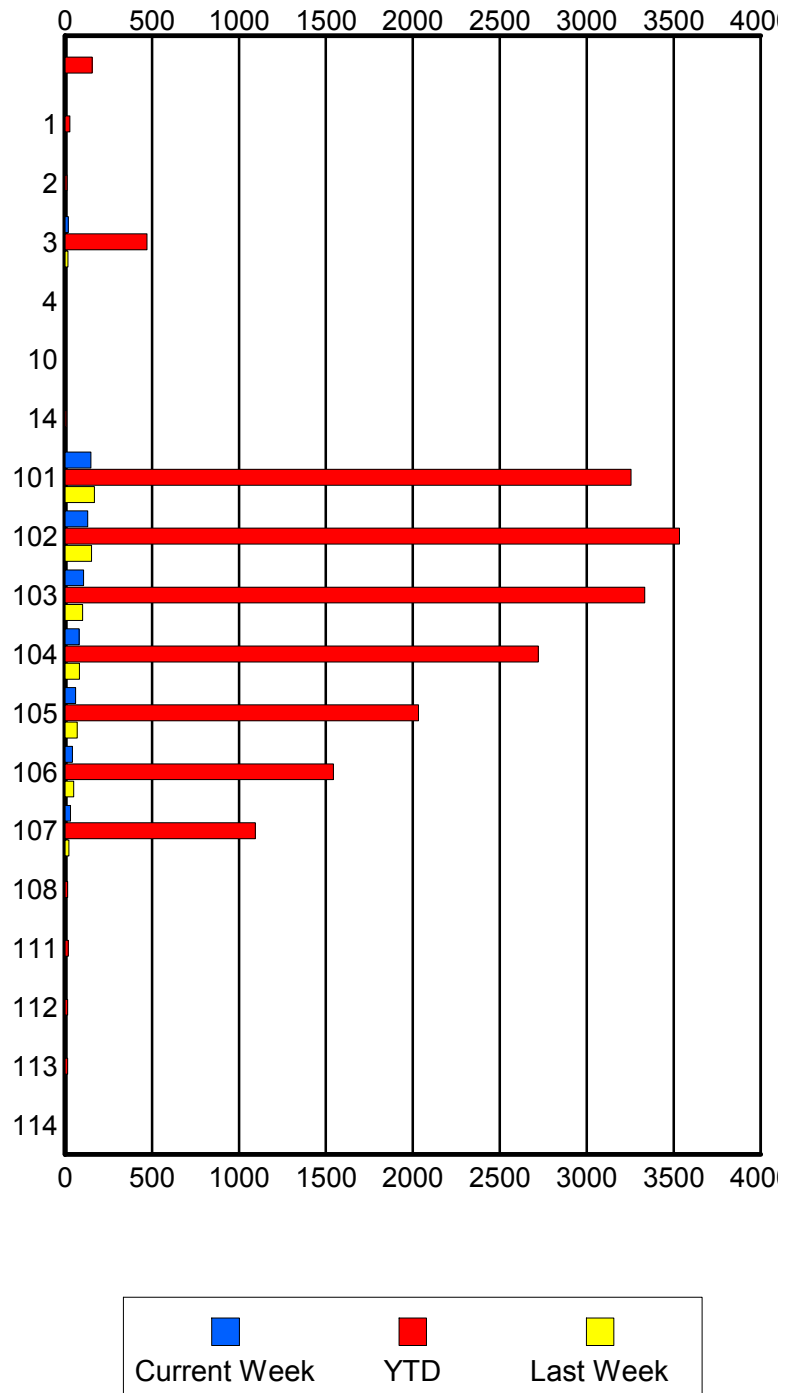
	Current We	Last Week	YTD
P60	0	0	1
	0	0	1
	0	0	1
P64	0	0	1
	0	0	1
	0	0	1
S01	0	0	3
	0	0	3
	0	0	3
S02	0	0	3
	0	0	3
	0	0	3
S04	0	0	2
	0	0	2
	0	0	2

Road Ranger / SIRV Performance By Beat

	Current We	Last Week	YTD
	5	0	155
	5	0	156
	5	0	161
1	0	0	26
	0	0	27
	0	0	28
2	0	0	11
	0	0	11
	0	0	13
3	18	16	458
	19	16	472
	19	17	509
4	0	0	2
	0	0	2
	0	0	2
10	0	0	6
	0	0	6
	0	0	9
14	0	0	7
	0	0	7
	0	0	7
101	148	167	3,221
	149	168	3,254
	153	182	3,489
102	128	152	3,499
	130	153	3,534
	135	159	3,753
103	105	99	3,296
	106	102	3,334
	110	110	3,586
104	79	81	2,690
	80	82	2,721
	88	89	2,917
105	58	68	2,014
	60	69	2,032
	63	70	2,159
106	42	50	1,525
	42	50	1,543
	44	54	1,648
107	31	22	1,081
	31	22	1,094
	33	25	1,149
108	0	0	13
	0	0	14
	0	0	14

Values presented are:
 - Total Events with a RR/SIRV Response
 - Total RR/SIRV Responses,
 - Total Activities Performed

RR/SIRV Responses per Beat



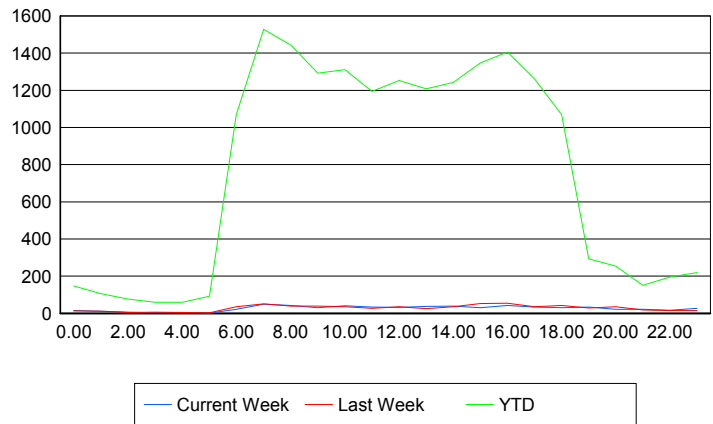
	Current We	Last Week	YTD
111	0	0	18
	0	0	19
	0	0	20
112	0	0	14
	0	0	15
	0	0	16
113	0	0	13
	0	0	14
	0	0	14
114	0	0	6
	0	0	6
	0	0	6

Road Ranger / SIRV Performance By Time of Day

Values presented are:
- Total Events with a RR/SIRV Response
- Total RR/SIRV Responses,
- Total Activities Performed

	Current We	Last Week	YTD
12AM-1AM	14	13	143
	14	13	148
	14	14	159
1AM-2AM	11	12	101
	12	12	106
	13	14	114
2AM-3AM	7	5	75
	7	5	77
	7	5	81
3AM-4AM	3	7	57
	3	7	60
	3	7	61
4AM-5AM	3	5	54
	3	5	59
	3	5	65
5AM-6AM	1	2	86
	1	2	93
	1	2	97
6AM-7AM	20	32	1,022
	21	35	1,069
	23	38	1,126
7AM-8AM	48	48	1,454
	49	51	1,527
	51	55	1,637
8AM-9AM	43	38	1,384
	43	39	1,444
	46	40	1,541

Number of Responses / Hour of the Day



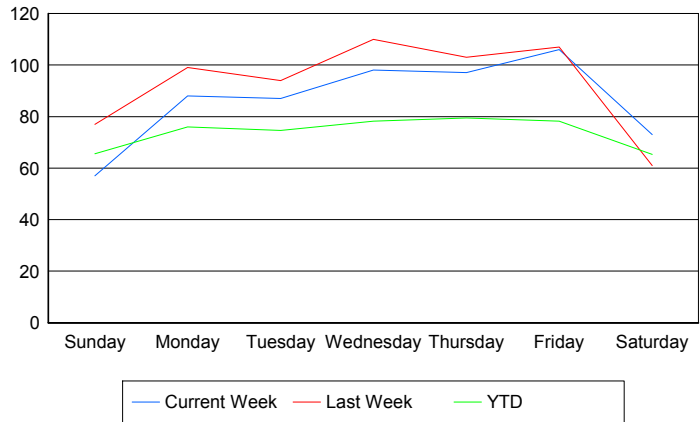
	Current We	Last Week	YTD
9AM-10AM	31	38	1,252
	31	38	1,293
	32	40	1,402
10AM-11AM	39	35	1,265
	40	36	1,311
	40	38	1,384
11AM-12PM	33	27	1,162
	33	27	1,195
	37	27	1,297
12PM-1PM	30	36	1,202
	32	36	1,252
	33	38	1,339
1PM-2PM	33	24	1,166
	37	25	1,208
	38	28	1,297
2PM-3PM	38	33	1,192
	39	35	1,242
	41	38	1,319
3PM-4PM	30	52	1,302
	31	52	1,348
	31	59	1,436
4PM-5PM	41	53	1,366
	43	54	1,406
	46	55	1,495
5PM-6PM	33	36	1,225
	33	36	1,261
	33	40	1,336
6PM-7PM	30	42	1,054
	31	43	1,069
	31	43	1,126
7PM-8PM	33	28	286
	33	28	293
	34	32	311
8PM-9PM	20	33	242
	21	35	253
	21	38	264
9PM-10PM	20	19	140
	21	19	150
	25	21	163
10PM-11PM	16	15	184
	17	15	196
	17	15	211
11PM-12AM	27	14	216
	27	14	220
	30	14	239

Road Ranger / SIRV Performance By Day of Week

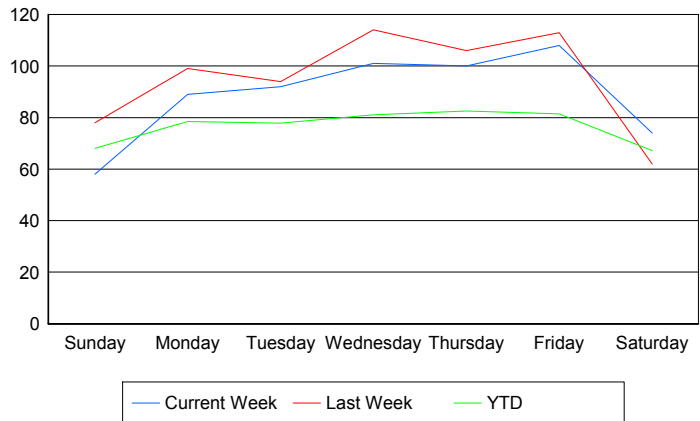
Values presented are:
 - Total Events with a RR/SIRV Response
 - Total RR/SIRV Responses,
 - Total Activities Performed

	Current We	Last Week	YTD
Sunday	57	73	586
	58	74	608
	61	80	653
Monday	88	99	3,202
	89	99	3,277
	97	105	3,500
Tuesday	87	94	3,153
	92	94	3,266
	96	101	3,495
Wednesday	98	110	3,315
	101	114	3,431
	104	121	3,669
Thursday	97	103	3,379
	100	106	3,470
	104	115	3,759
Friday	106	107	3,362
	108	113	3,492
	111	119	3,718
Saturday	73	61	651
	74	62	670
	77	65	706

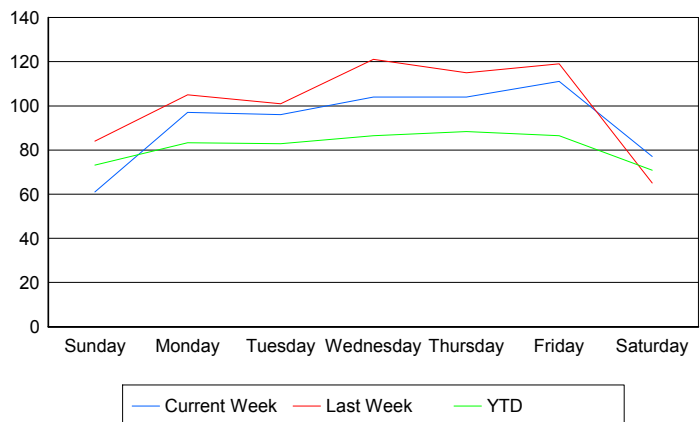
Avg # of events with a RR/SIRV Response per Day of the Week



Avg # of RR/SIRV Responses per Day of the Week



Avg # of RR/SIRV Activities Performed per Day of the Week



Road Ranger / SIRV Responses per Time of Day and Day of Week

