



# Weekly Performance Measures Report Palm Beach County



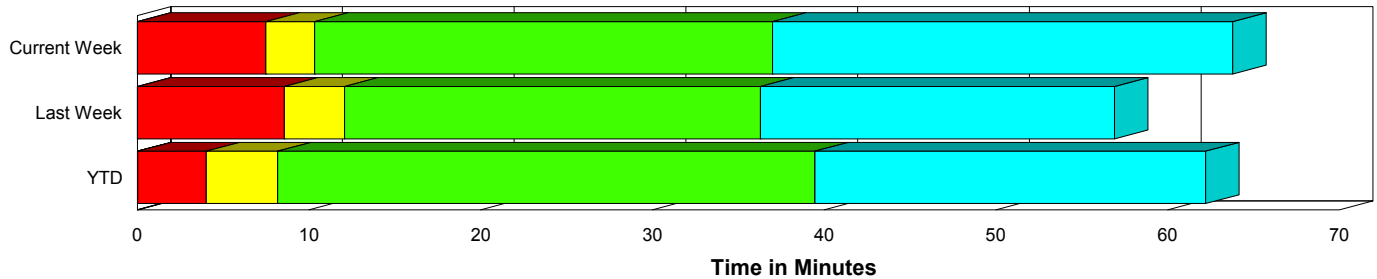
Period From Nov 15, 2009 to Nov 21, 2009

Created on:  
November 23, 2009  
11:28 am

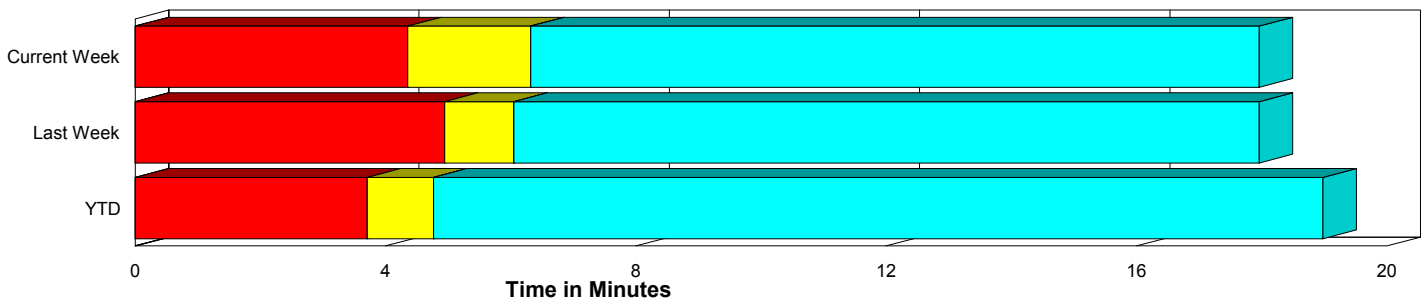
## Performance Measures Summary

	Traffic Events (No Lanes Blocked)			Incidents (Lanes Blocked)		
	<u>This Week</u>	<u>Last Week</u>	<u>YTD</u>	<u>This Week</u>	<u>Last Week</u>	<u>YTD</u>
Number of Events	445	435	15,300	30	21	1,001
TMC Detection (min.)	0.00	0.00	0.00	0.00	0.00	0.03
TMC Verification (min.)	4.36	4.94	3.71	7.48	8.56	3.99
TMC Response (min.)	6.65	6.20	5.30	10.32	12.49	8.86
RR Dispatch Time (min.)	1.82	2.29	1.69	2.03	1.63	3.53
RR Response Time (min.)	4.86	3.91	3.70	8.29	10.86	5.31
Roadway Clearance (min.)				36.99	35.11	47.49
Event Clearance (min.)	18.29	18.11	19.51	62.73	55.72	69.56
# of Events w/ RR/SIRV	433	427	13,559	30	20	815
RR/SIRV Responses	433	427	13,559	30	20	815
RR/SIRV Activities	463	455	14,704	47	25	1,171

### Incident Clearance Time-Line



### Traffic Event (Non-Lane Blockage) Time-Line



<span style="color: blue;">■</span> Avg. TMC Detection Time	<span style="color: green;">■</span> Avg. Time from TMC Response to Roadway Clearance*
<span style="color: red;">■</span> Avg. Time from TMC Detection to TMC Verification	<span style="color: cyan;">■</span> Avg. Time from Roadway Clearance to Incident/Event Clearance**
<span style="color: yellow;">■</span> Avg. Time from TMC Verification to TMC Response	

\* Roadway clearance equals all travel lanes open

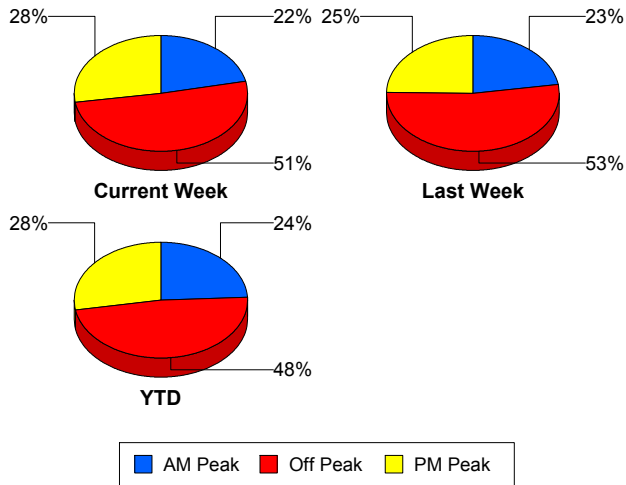
\*\* Incident clearance equals time when last responder has left the scene

## Performance Measures by Peak Period

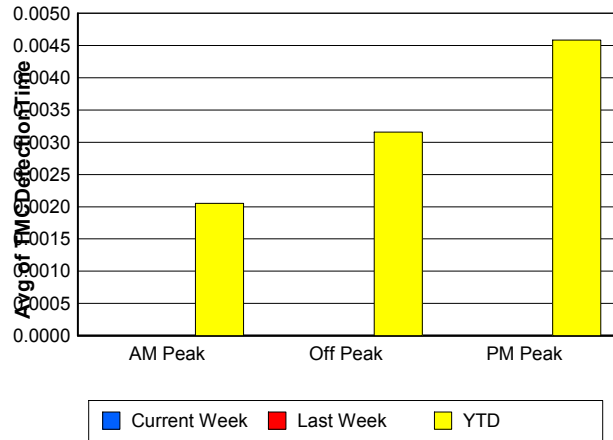
Note: AM peak period is defined as 6am to 10am and PM peak period is defined as 3pm to 7pm.

	AM Peak			Off Peak			PM Peak		
	<u>Current Week</u>	<u>Last Week</u>	<u>YTD</u>	<u>Current Week</u>	<u>Last Week</u>	<u>YTD</u>	<u>Current Week</u>	<u>Last Week</u>	<u>YTD</u>
Number of Events	103	103	3,950	241	240	7,809	131	113	4,542
Number of Incidents	8	6	290	18	11	472	4	4	239
TMC Detection (min.)	0.00	0.00	0.00	0.00	0.00	0.00	0.00	0.00	0.00
TMC Verification (min.)	2.17	4.44	3.13	5.46	3.63	3.48	4.80	8.87	4.66
TMC Response (min.)	5.15	5.43	4.61	7.88	5.59	6.09	6.42	9.35	5.44
RR Dispatch Time (min.)	1.48	2.08	1.26	2.20	1.89	2.33	1.44	3.21	1.47
RR Response Time (min.)	3.74	3.35	3.39	5.71	3.70	3.92	4.97	6.11	3.98
Event Clearance (min.)	21.10	21.08	22.06	22.84	17.05	23.74	17.90	24.65	21.05
Roadway Clearance (min.)	20.49	20.99	38.88	45.30	43.16	49.13	32.57	34.13	54.68
Incident Clearance (min.)	61.66	32.29	66.43	60.75	54.40	68.42	73.79	94.50	75.59
# of Events w/ RR/SIRV	100	100	3,789	234	235	6,277	129	112	4,308
RR/SIRV Responses	100	100	3,789	234	235	6,277	129	112	4,308
RR/SIRV Activities	100	113	4,253	266	247	6,923	144	120	4,699

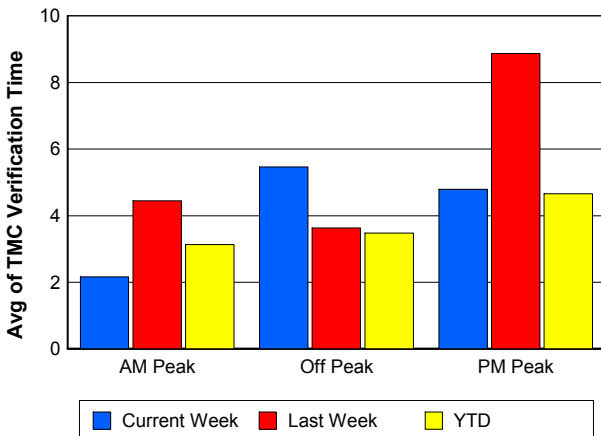
### Number of Events / Peak Period



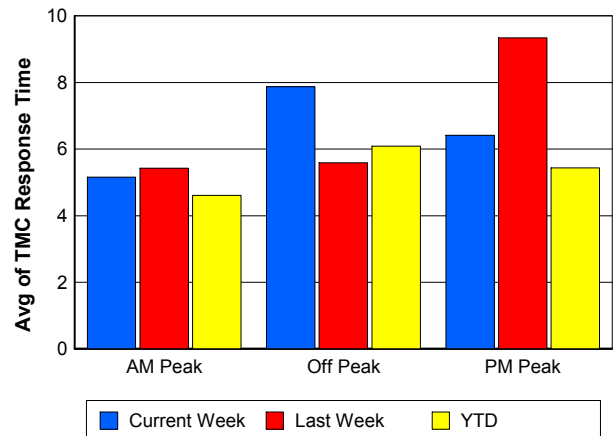
### TMC Detection Time



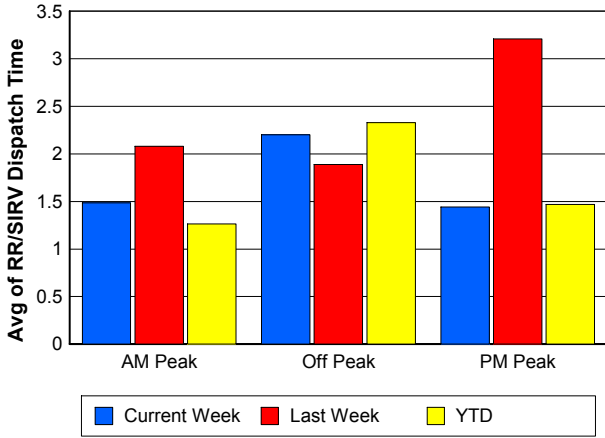
### TMC Verification Time



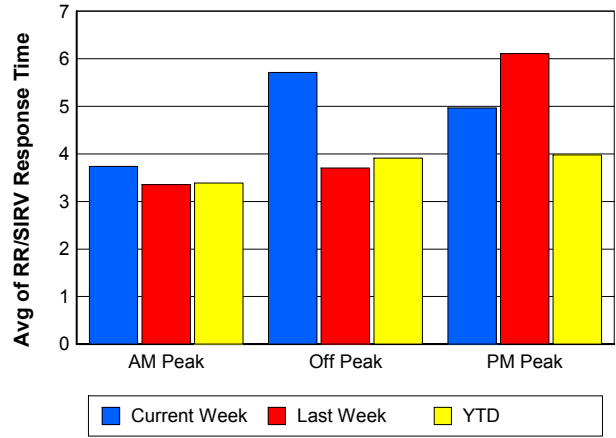
### TMC Response Time



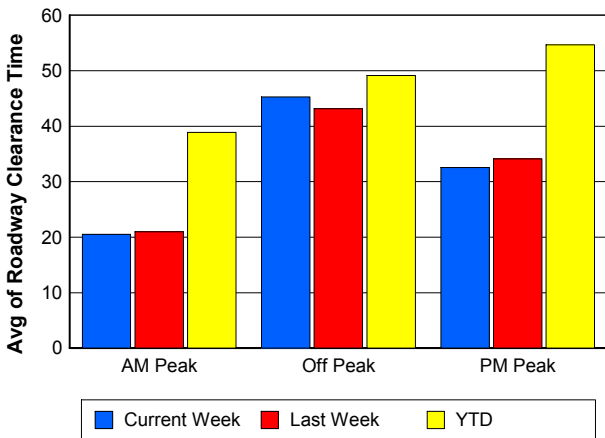
## Road Ranger / SIRV Dispatch Time



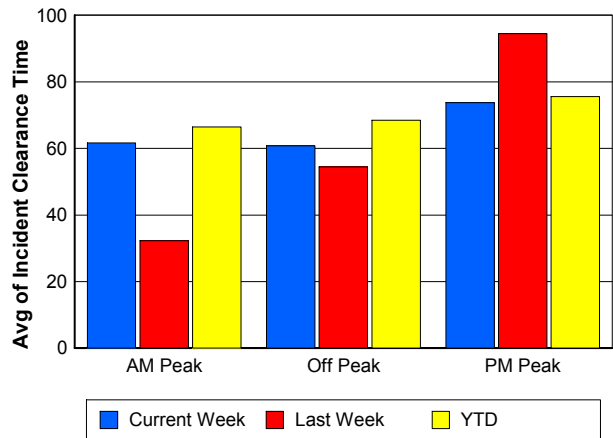
## Road Ranger / SIRV Response Time



## Roadway Clearance Time (2A)



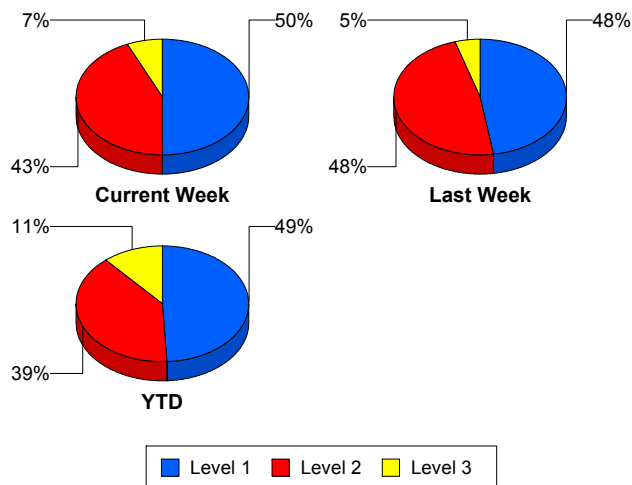
## Incident Clearance Time (3B)



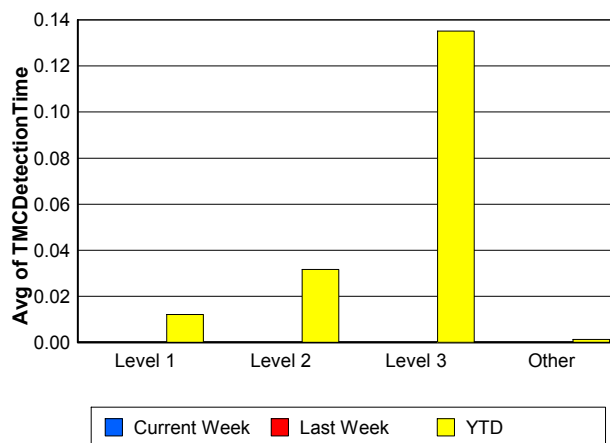
## Performance Measures by Severity

	Level 1			Level 2			Level 3			Other		
	<u>This Week</u>	<u>Last Week</u>	<u>YTD</u>	<u>This Week</u>	<u>Last Week</u>	<u>YTD</u>	<u>This Week</u>	<u>Last Week</u>	<u>YTD</u>	<u>This Week</u>	<u>Last Week</u>	<u>YTD</u>
Number of Events	15	10	491	13	10	395	2	1	115	445	435	15,300
Number of Incidents	15	10	491	13	10	395	2	1	115	0	0	0
TMC Detection (min.)	0.00	0.00	0.01	0.00	0.00	0.03	0.00	0.00	0.14	0.00	0.00	0.00
TMC Verification (min.)	4.13	5.10	2.42	11.56	11.57	5.78	6.08	13.17	4.57	4.36	4.94	3.71
TMC Response (min.)	7.49	6.80	4.50	14.23	17.55	10.05	6.06	13.15	27.29	6.65	6.20	5.30
RR Dispatch Time (min.)	1.88	0.58	1.15	2.38	2.37	2.63	0.88	3.75	19.99	1.82	2.29	1.69
RR Resp. Time (min.)	5.62	6.22	3.37	11.86	15.18	7.42	5.18	9.40	7.30	4.86	3.91	3.70
Event Clearance (min.)	45.98	42.88	42.12	78.18	66.90	71.29	87.93	72.32	180.76	18.29	18.11	19.51
Roadway Clear. (min.)	14.31	13.91	14.73	55.66	52.58	53.66	85.73	72.40	166.13			
Incident Clearance (min.)	45.98	42.88	42.12	78.18	66.90	71.29	87.93	72.32	180.76			
# of Events w/ RR/SIRV	15	9	422	13	10	315	2	1	78	433	427	13,559
RR/SIRV Responses	15	9	422	13	10	315	2	1	78	433	427	13,559
RR/SIRV Activities	22	11	542	21	13	500	4	1	129	463	455	14,704

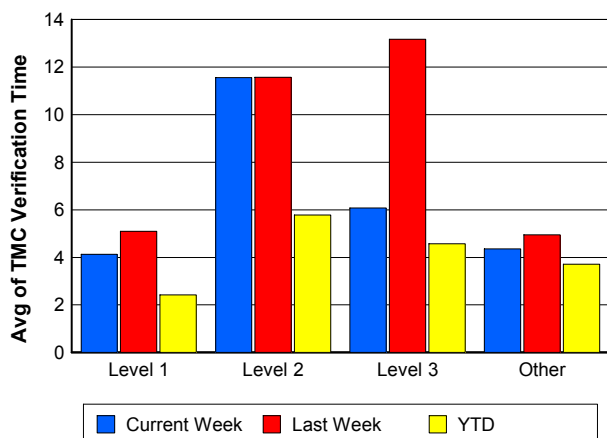
### Number of Events / Severity



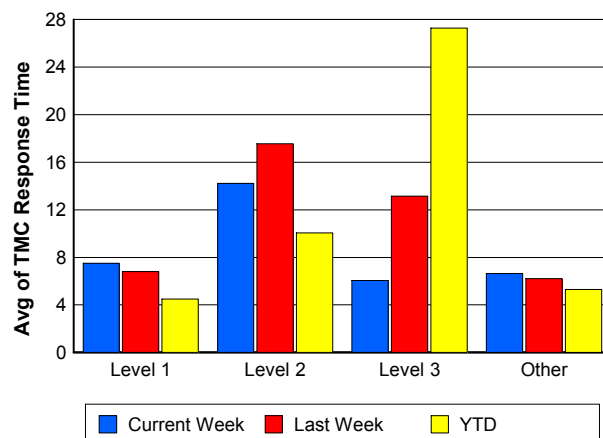
### TMC Detection Time



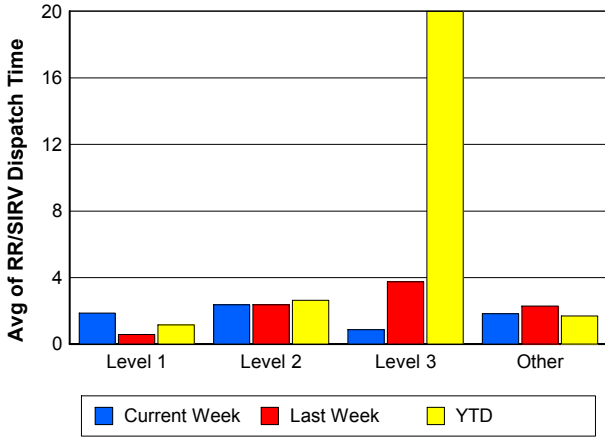
### TMC Verification Time



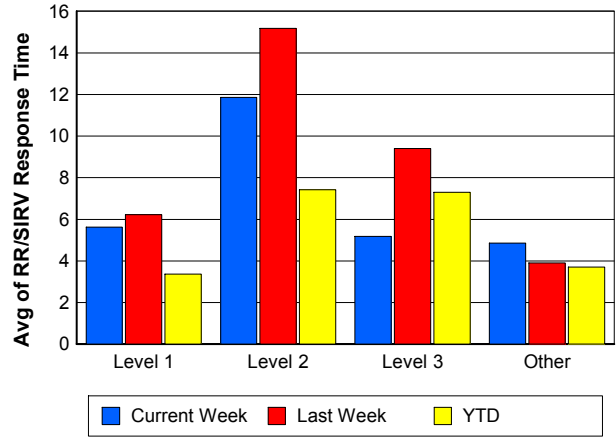
### TMC Response Time



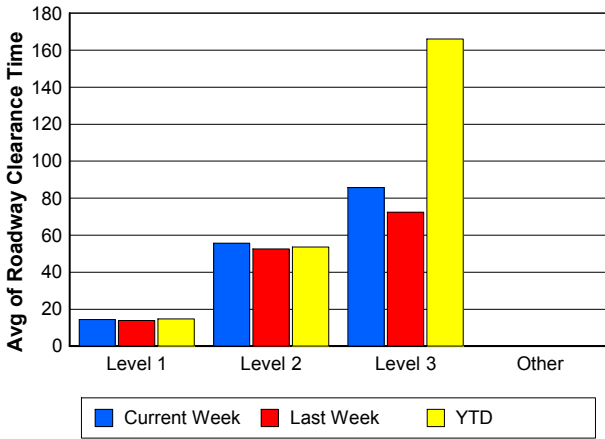
## Road Ranger / SIRV Dispatch Time



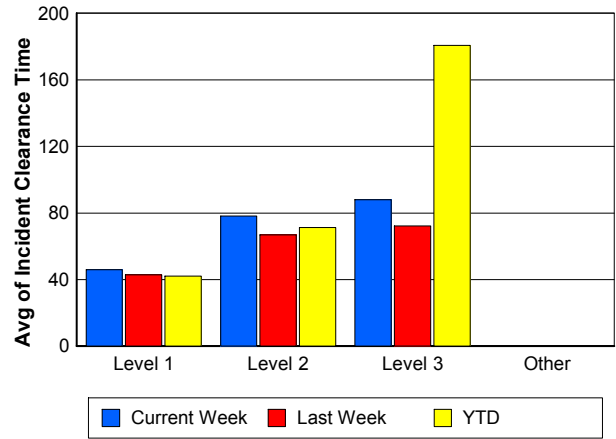
## Road Ranger / SIRV Response Time



## Roadway Clearance Time (2A)



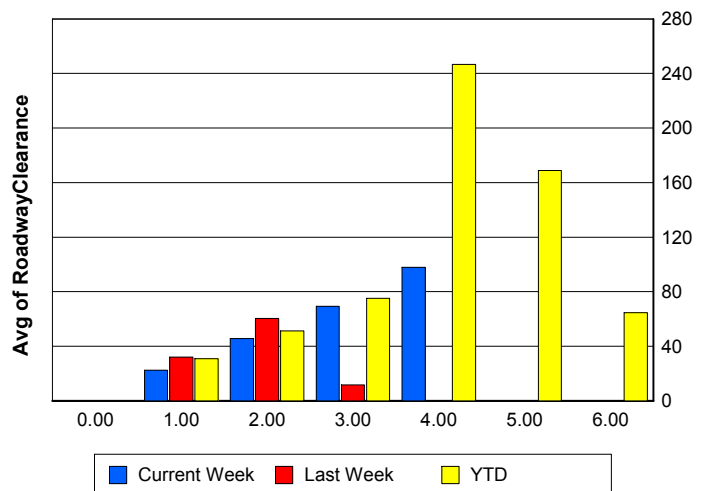
## Incident Clearance Time (3B)



## Roadway Clearance by Maximum Number of Lanes Blocked

	Current Week	Last Week	YTD
0			
1	22.53	32.04	30.93
2	45.51	60.34	51.21
3	69.20	11.58	75.11
4	97.91	0.00	246.70
5	0.00	0.00	168.97
6	0.00	0.00	64.70

## Roadway Clearance Time (2A)



## Performance Measures by Roadway

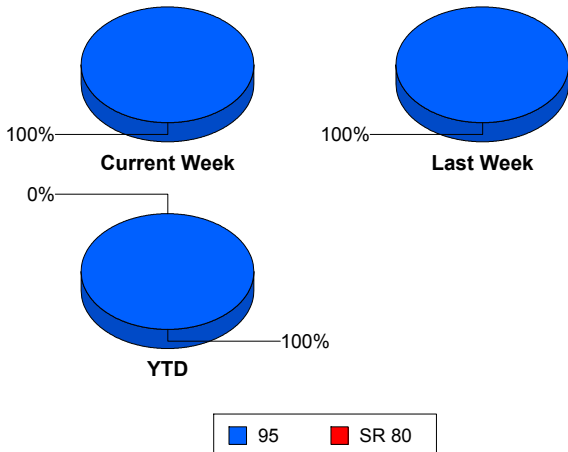
95

	<u>Current Week</u>	<u>Last Week</u>	<u>YTD</u>
Number of Events	475	456	16,297
Number of Incidents	30	21	998
TMC Detection (min.)	0.00	0.00	0.00
TMC Verification (min.)	4.56	5.11	3.72
TMC Response (min.)	6.90	6.49	5.50
RR Dispatch Time (min.)	1.84	2.26	1.79
RR Resp. Time (min.)	5.10	4.22	3.80
Event Clearance (min.)	21.10	19.84	22.24
Roadway Clear. (min.)	36.99	35.11	42.25
Incident Clearance (min.)	62.73	55.72	64.21
# of Events w/ RR/SIRV	463	447	14,374
RR/SIRV Responses	463	447	14,374
RR/SIRV Activities	510	480	15,875

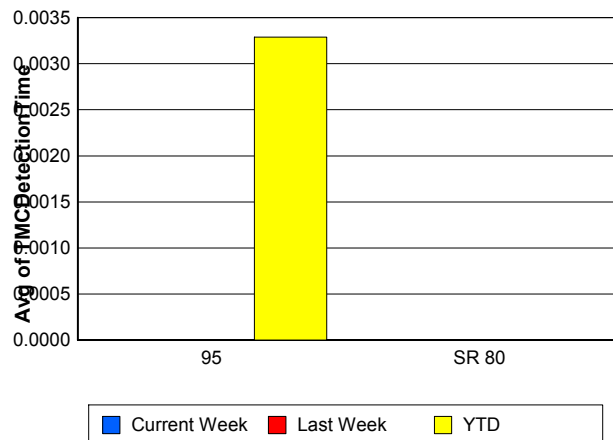
SR 80

	<u>YTD</u>
Number of Events	4
Number of Incidents	3
TMC Detection (min.)	0.00
TMC Verification (min.)	0.00
TMC Response (min.)	
RR Dispatch Time (min.)	
RR Resp. Time (min.)	
Event Clearance (min.)	1,409.98
Roadway Clear. (min.)	1,789.50
Incident Clearance (min.)	1,847.09
# of Events w/ RR/SIRV	0
RR/SIRV Responses	0
RR/SIRV Activities	0

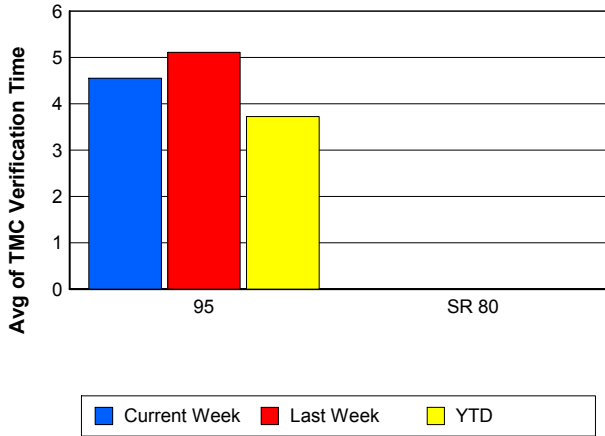
### Number of Events / Roadway



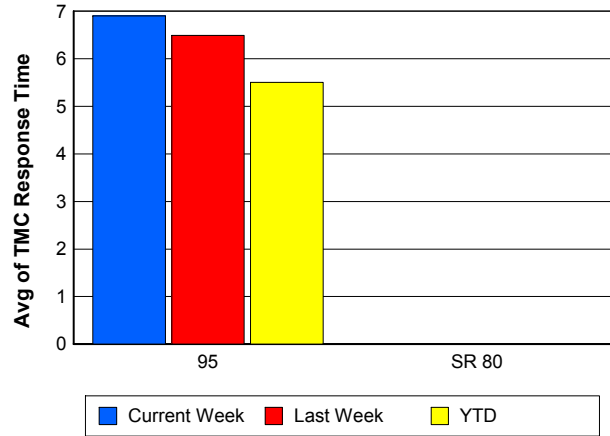
### TMC Detection Time



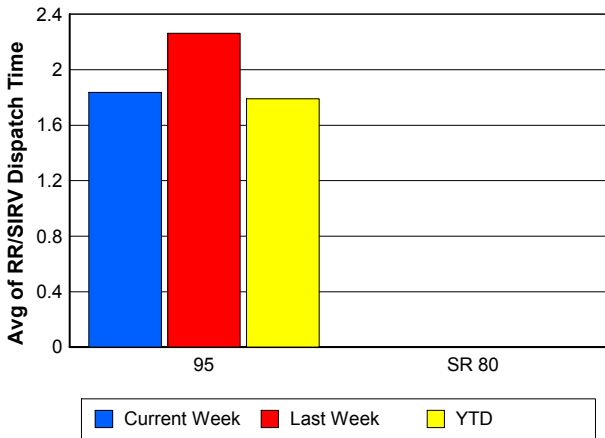
### TMC Verification Time



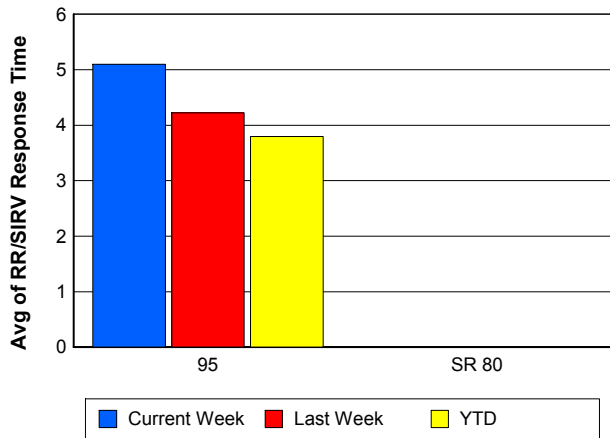
### TMC Response Time



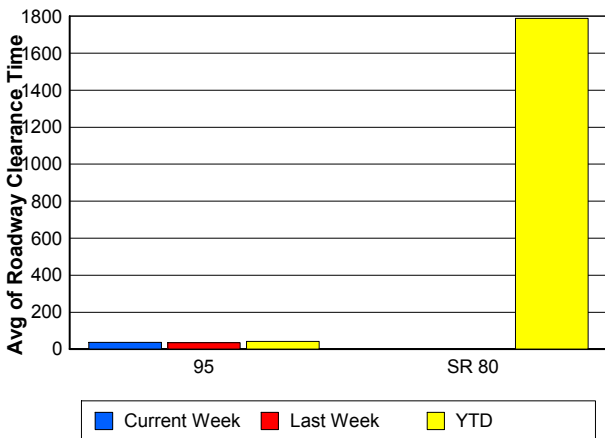
### Road Ranger / SIRV Dispatch Time



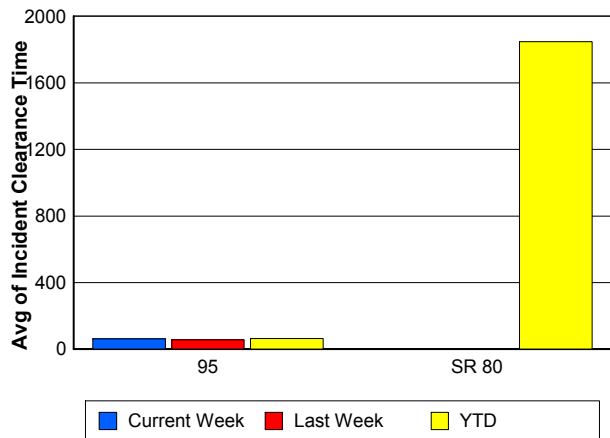
### Road Ranger / SIRV Response Time



### Roadway Clearance Time (2A)



### Incident Clearance Time (3B)



## Performance Measures by Event Type

### Accident

	<u>Current Week</u>	<u>Last Week</u>	<u>YTD</u>
Number of Events	45	26	1,373
Number of Incidents	21	9	647
TMC Detection (min.)	0.00	0.00	0.01
TMC Verification (min.)	8.48	10.10	4.89
TMC Response (min.)	11.51	13.80	8.42
RR Dispatch Time (min.)	2.13	2.76	2.61
RR Response Time (min.)	9.38	11.04	5.80
Event Clearance (min.)	59.25	53.69	58.69
Roadway Clearance (min.)	44.03	50.59	45.56
Incident Clearance (min.)	77.40	74.41	73.33
# of Events w/ RR/SIRV	44	26	1,145
RR/SIRV Assists	44	26	1,145
RR/SIRV Activities	56	32	1,452

### Debris on Roadway

	<u>Current Week</u>	<u>Last Week</u>	<u>YTD</u>
Number of Events	27	23	1,146
Number of Incidents	0	0	37
TMC Detection (min.)	0.00	0.00	0.00
TMC Verification (min.)	6.71	12.56	7.70
TMC Response (min.)	6.70	12.67	7.95
RR Dispatch Time (min.)	1.21	4.73	1.89
RR Response Time (min.)	5.46	7.94	6.06
Event Clearance (min.)	11.97	15.01	12.09
Roadway Clearance (min.)			21.35
Incident Clearance (min.)			24.41
# of Events w/ RR/SIRV	26	23	1,128
RR/SIRV Assists	26	23	1,128
RR/SIRV Activities	29	23	1,208

### Disabled Vehicle

	<u>Current Week</u>	<u>Last Week</u>	<u>YTD</u>
Number of Events	363	387	12,361
Number of Incidents	7	7	211
TMC Detection (min.)	0.00	0.00	0.00
TMC Verification (min.)	4.20	4.44	3.52
TMC Response (min.)	6.34	5.62	4.73
RR Dispatch Time (min.)	1.83	2.13	1.52
RR Response Time (min.)	4.54	3.48	3.30
Event Clearance (min.)	17.91	17.72	17.92
Roadway Clearance (min.)	12.45	18.50	25.71
Incident Clearance (min.)	17.88	24.43	35.52
# of Events w/ RR/SIRV	359	384	11,602
RR/SIRV Assists	359	384	11,602
RR/SIRV Activities	406	413	12,759

## Emergency Vehicles

	<u>Last Week</u>	<u>YTD</u>
Number of Events	1	16
Number of Incidents	0	9
TMC Detection (min.)	0.00	0.00
TMC Verification (min.)	0.00	1.98
TMC Response (min.)	0.40	7.80
RR Dispatch Time (min.)	0.35	2.77
RR Response Time (min.)	0.05	4.75
Event Clearance (min.)	2.45	44.69
Roadway Clearance (min.)		41.91
Incident Clearance (min.)		47.66
# of Events w/ RR/SIRV	1	8
RR/SIRV Assists	1	8
RR/SIRV Activities	1	10

## Other

	<u>Current Week</u>	<u>Last Week</u>	<u>YTD</u>
Number of Events	34	11	919
Number of Incidents	0	0	7
TMC Detection (min.)	0.00	0.00	0.00
TMC Verification (min.)	1.57	0.00	1.27
TMC Response (min.)	5.41	0.00	14.45
RR Dispatch Time (min.)	2.21	1.09	6.90
RR Response Time (min.)	3.13	0.00	6.51
Event Clearance (min.)	9.44	6.26	34.07
Roadway Clearance (min.)			40.35
Incident Clearance (min.)			52.93
# of Events w/ RR/SIRV	29	5	335
RR/SIRV Assists	29	5	335
RR/SIRV Activities	13	3	272

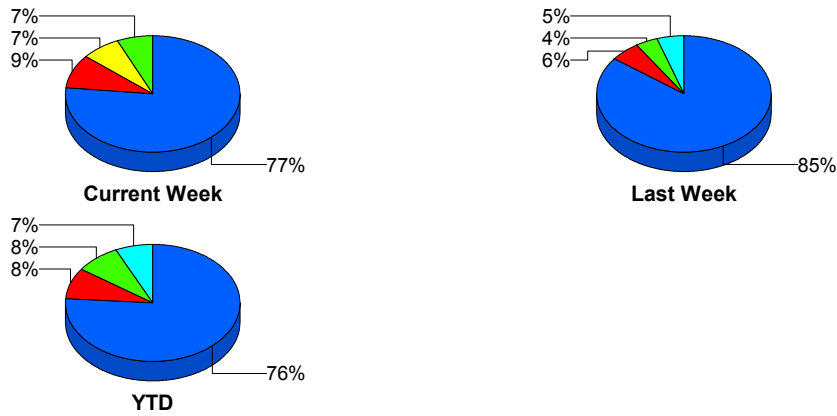
## Police Activity

	<u>Current Week</u>	<u>Last Week</u>	<u>YTD</u>
Number of Events	3	2	356
Number of Incidents	1	1	56
TMC Detection (min.)	0.00	0.00	0.08
TMC Verification (min.)	0.00	7.58	0.57
TMC Response (min.)	16.75	7.55	12.23
RR Dispatch Time (min.)	1.00	0.92	5.36
RR Response Time (min.)	15.38	6.63	6.64
Event Clearance (min.)	37.68	24.03	28.61
Roadway Clearance (min.)	75.12	34.42	69.05
Incident Clearance (min.)	74.82	35.83	84.34
# of Events w/ RR/SIRV	2	2	54
RR/SIRV Assists	2	2	54
RR/SIRV Activities	3	2	61

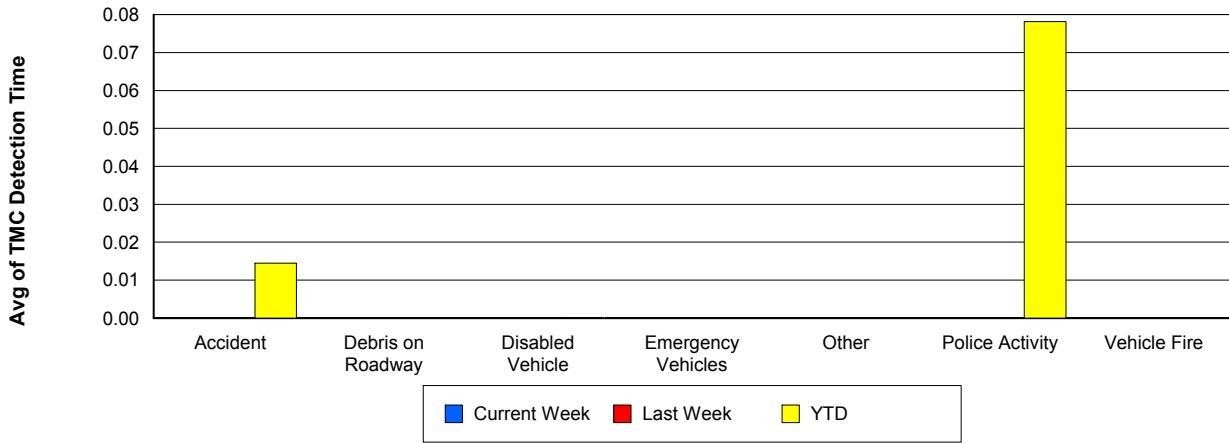
## Vehicle Fire

	<u>Current Week</u>	<u>Last Week</u>	<u>YTD</u>
Number of Events	2	4	42
Number of Incidents	1	4	33
TMC Detection (min.)	0.00	0.00	0.00
TMC Verification (min.)	15.44	11.27	4.55
TMC Response (min.)	15.42	15.41	18.13
RR Dispatch Time (min.)	0.29	1.43	10.63
RR Response Time (min.)	15.13	13.97	7.50
Event Clearance (min.)	46.38	73.40	82.54
Roadway Clearance (min.)	22.75	29.50	61.18
Incident Clearance (min.)	56.42	73.40	89.71
# of Events w/ RR/SIRV	2	4	29
RR/SIRV Assists	2	4	29
RR/SIRV Activities	2	4	39

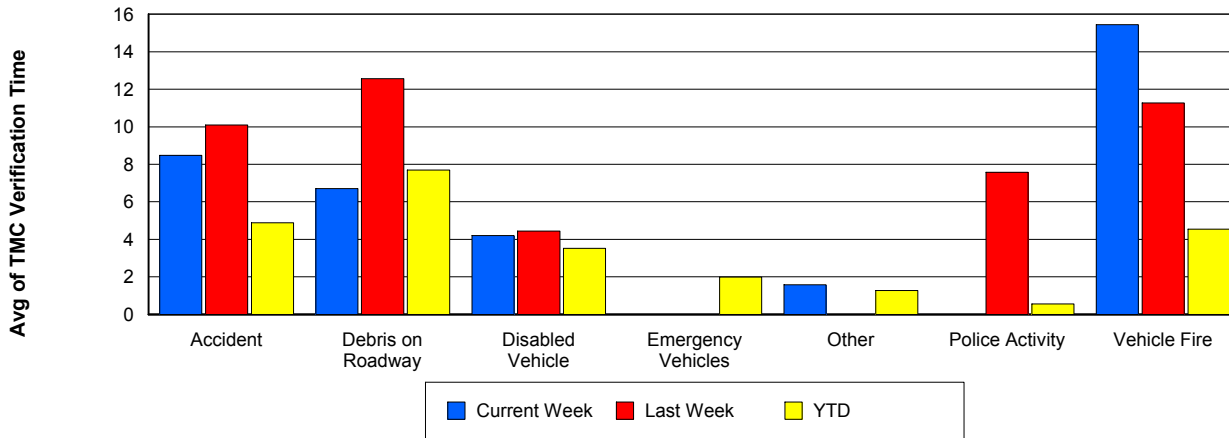
## Number of Events / Event Type



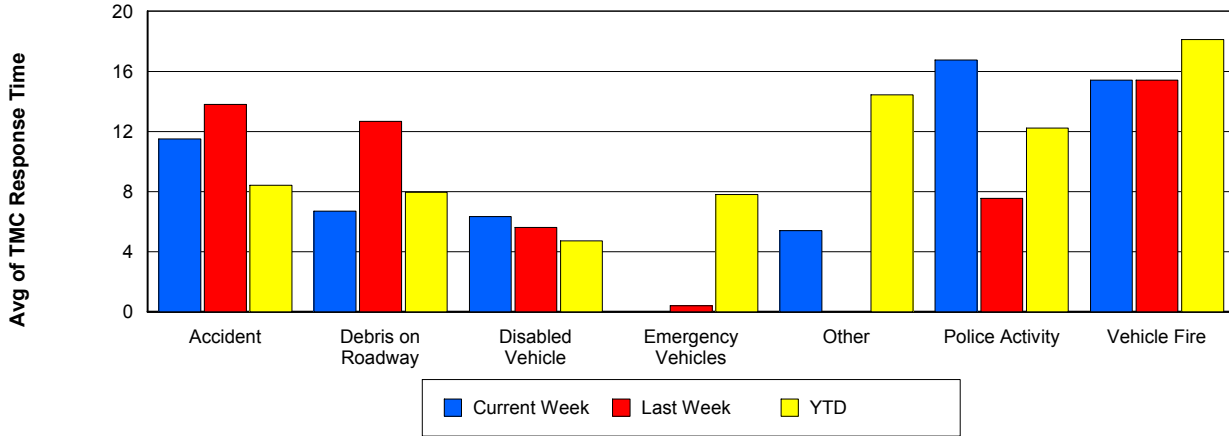
## TMC Detection Time



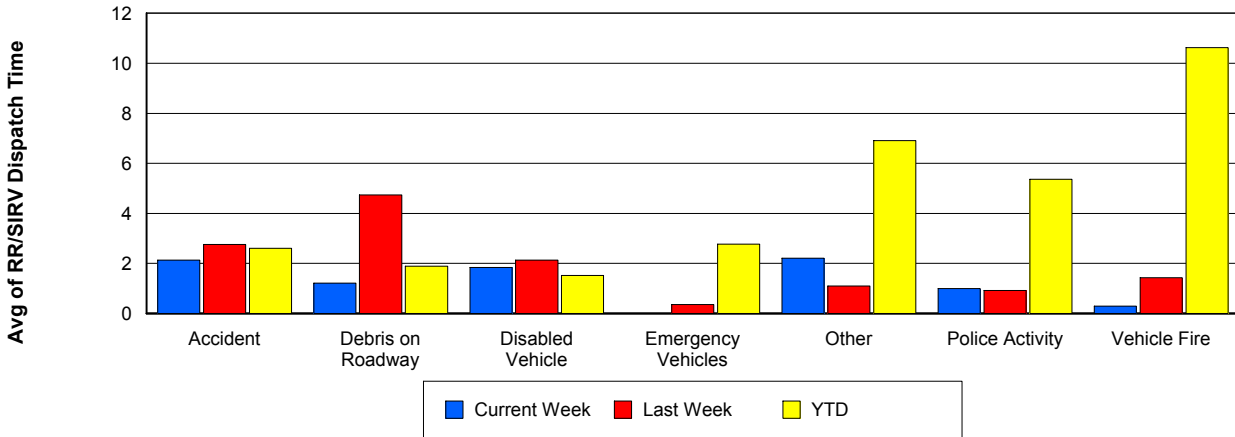
## TMC Verification Time



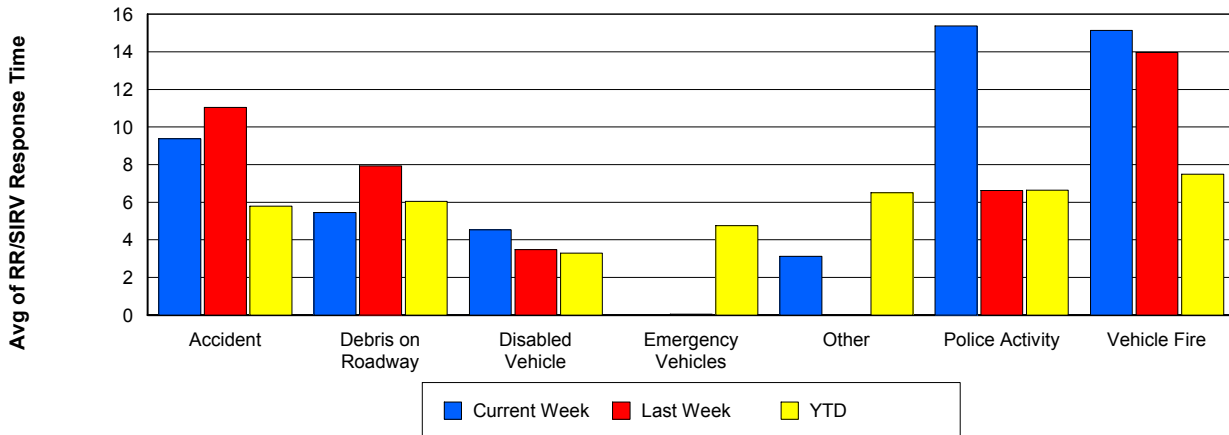
## TMC Response Time



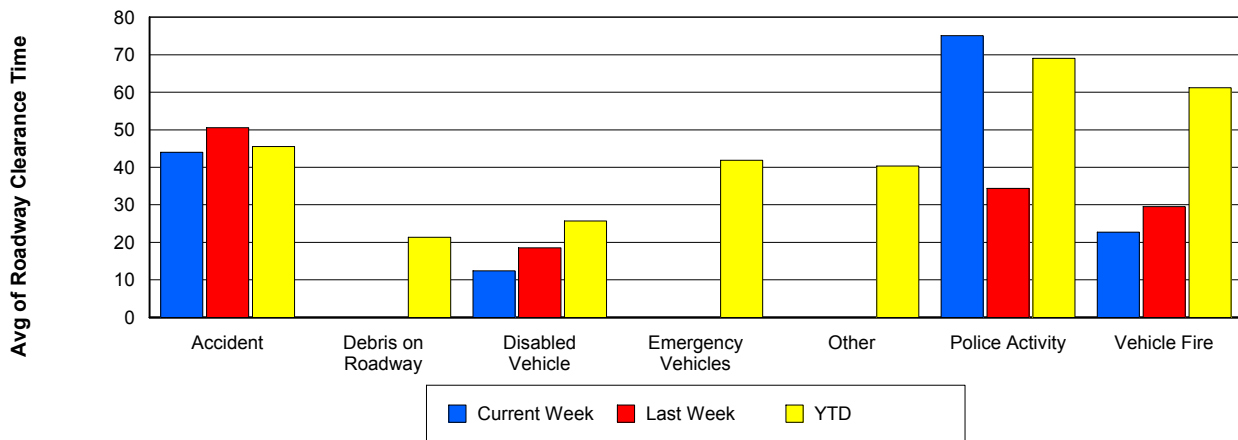
## Road Ranger / SIRV Dispatch Time



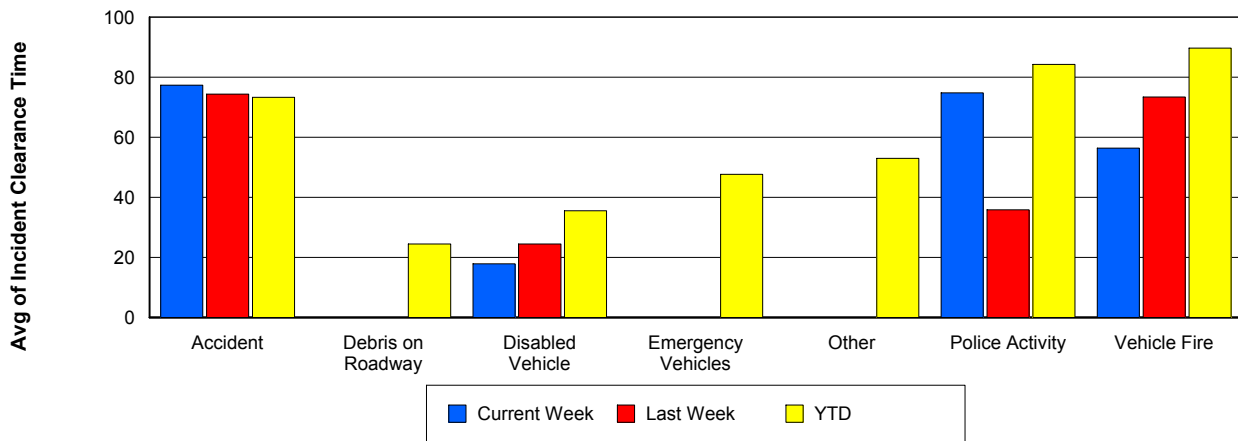
## Road Ranger / SIRV Response Time



## Roadway Clearance Time (2A)



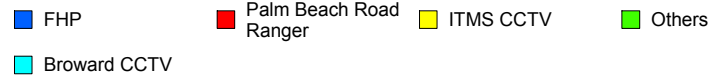
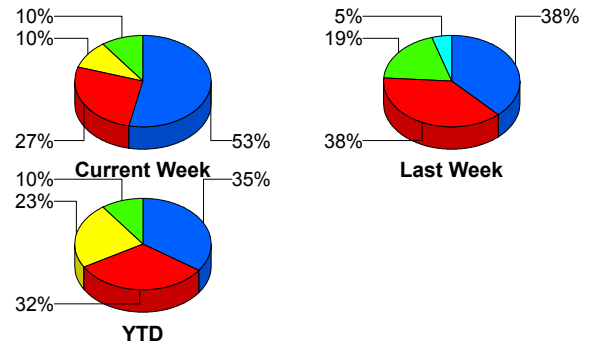
## Incident Clearance Time (3B)



## Incident Detection Methods

	Current Week	Last Week	YTD
Broward CCTV	1	1	10
Broward Road Ranger	0	0	8
Broward TMC	0	0	6
Broward VideoWall	0	0	1
Construction CEI	0	0	2
District 4	0	0	23
Emergency Operations	0	0	1
FDOT Maintenance	0	0	2
FHP	16	8	348
I-95 Construction PIO	0	1	4
ITMS	0	1	14
ITMS CCTV	3	1	233
Local Police	0	0	1
Media	1	0	3
Motorist	0	1	18
Other	1	0	1
Palm Beach Road Ran	8	8	320
Road Watcher	0	0	2
SmarTraveler (511)	0	0	4
<b>Total</b>	<b>30</b>	<b>21</b>	<b>1,001</b>

### Total Incidents by Detection Method

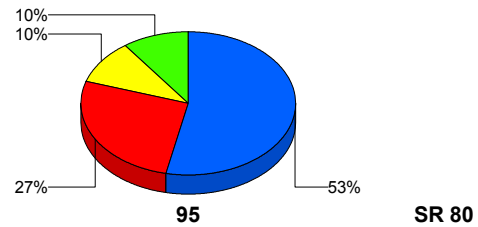


## Incident Detection Methods by Roadway

		Current Week	Last Week	YTD
95	Broward CCTV	1	1	10
	Broward Road Ranger	0	0	8
	Broward TMC	0	0	6
	Broward VideoWall	0	0	1
	Construction CEI	0	0	2
	District 4	0	0	23
	FDOT Maintenance	0	0	2
	FHP	16	8	347
	I-95 Construction PIO	0	1	4
	ITMS	0	1	13
	ITMS CCTV	3	1	233
	Local Police	0	0	1
	Media	1	0	3
	Motorist	0	1	18
	Other	1	0	1
	Palm Beach Road Ran	8	8	320
	Road Watcher	0	0	2
	SmarTraveler (511)	0	0	4
	<b>Total</b>	<b>30</b>	<b>21</b>	<b>998</b>
SR 80	Emergency Operations	0	0	1
	FHP	0	0	1
	ITMS	0	0	1
	<b>Total</b>	<b>0</b>	<b>0</b>	<b>3</b>
<b>Total</b>	<b>30</b>	<b>21</b>	<b>1,001</b>	

Total Events by Roadway and Detection Method

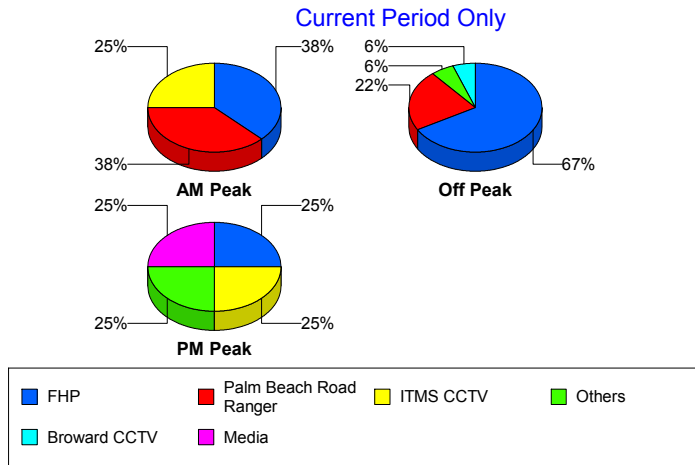
Current Period Only



### Incident Detection Methods by Peak Period

		Current Week	Last Week	YTD
AM Peak	Broward CCTV	0	0	2
	Broward Road Ranger	0	0	3
	Broward TMC	0	0	2
	Construction CEI	0	0	1
	District 4	0	0	11
	FHP	3	0	101
	I-95 Construction PIO	0	1	2
	ITMS	0	1	6
	ITMS CCTV	2	0	44
	Motorist	0	1	9
	Palm Beach Road Ran	3	3	105
	Road Watcher	0	0	1
	SmarTraveler (511)	0	0	3
	<b>Total</b>	<b>8</b>	<b>6</b>	<b>290</b>
	Off Peak	Broward CCTV	1	0
Broward Road Ranger		0	0	2
Broward TMC		0	0	4
Broward VideoWall		0	0	1
Construction CEI		0	0	1
District 4		0	0	9
FDOT Maintenance		0	0	2
FHP		12	5	177
I-95 Construction PIO		0	0	2
ITMS		0	0	7
ITMS CCTV		0	1	123
Motorist		0	0	5
Other		1	0	1
Palm Beach Road Ran		4	5	131
Road Watcher		0	0	1
SmarTraveler (511)		0	0	1
<b>Total</b>	<b>18</b>	<b>11</b>	<b>472</b>	

Total Events by Peak Period and Detection Method

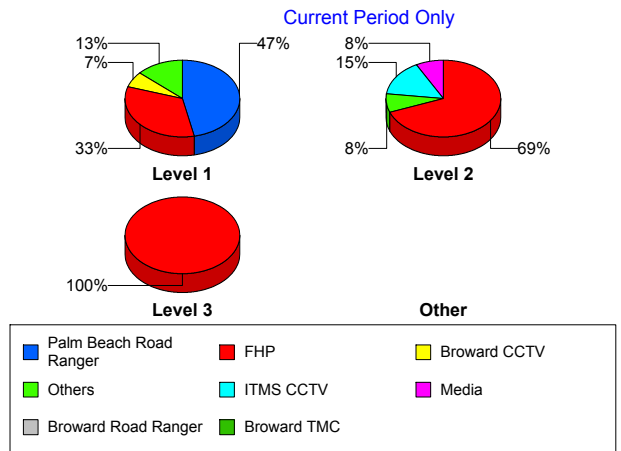


		Current Week	Last Week	YTD
PM Peak	Broward CCTV	0	1	3
	Broward Road Ranger	0	0	3
	District 4	0	0	3
	Emergency Operations	0	0	1
	FHP	1	3	70
	ITMS	0	0	1
	ITMS CCTV	1	0	66
	Local Police	0	0	1
	Media	1	0	3
	Motorist	0	0	4
	Palm Beach Road Ran	1	0	84
	Total	4	4	239
Total		30	21	1,001

### Incident Detection Methods by Severity

		Current Week	Last Week	YTD
Level 1	Broward CCTV	1	0	7
	Broward Road Ranger	0	0	4
	Broward TMC	0	0	2
	District 4	0	0	16
	FHP	5	3	118
	I-95 Construction PIO	0	1	3
	ITMS	0	0	5
	ITMS CCTV	1	1	101
	Local Police	0	0	1
	Motorist	0	0	11
	Other	1	0	1
	Palm Beach Road Ran	7	5	220
	Road Watcher	0	0	1
	SmarTraveler (511)	0	0	1
	Total	15	10	491
Level 2	Broward CCTV	0	1	1

### Total Events by Severity and Detection Method



		Current Week	Last Week	YTD
Level 2	Broward Road Ranger	0	0	3
	Broward TMC	0	0	2
	Broward VideoWall	0	0	1
	Construction CEI	0	0	1
	District 4	0	0	6
	FDOT Maintenance	0	0	2
	FHP	9	4	176
	I-95 Construction PIO	0	0	1
	ITMS	0	1	7
	ITMS CCTV	2	0	99
	Media	1	0	2
	Motorist	0	1	6
	Palm Beach Road Ran	1	3	84
	Road Watcher	0	0	1
	SmarTraveler (511)	0	0	3
Total	13	10	395	
Level 3	Broward CCTV	0	0	2
	Broward Road Ranger	0	0	1
	Broward TMC	0	0	2
	Construction CEI	0	0	1
	District 4	0	0	1
	Emergency Operations	0	0	1
	FHP	2	1	54
	ITMS	0	0	2
	ITMS CCTV	0	0	33
	Media	0	0	1
	Motorist	0	0	1
	Palm Beach Road Ran	0	0	16
Total	2	1	115	
Total	30	21	1,001	

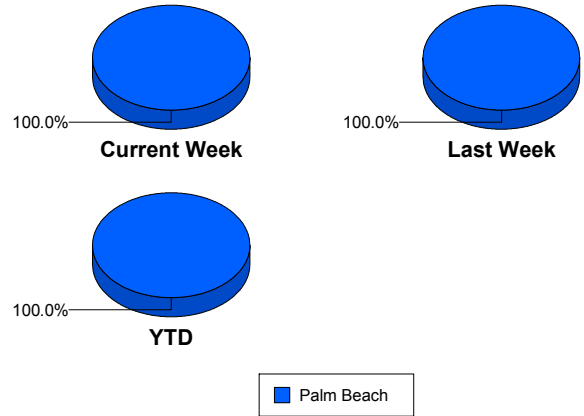
# Road Ranger / SIRV Performance Measures

## Road Ranger / SIRV Performance By County

RR/SIRV Responses per County

Values presented are: - Total Events with a RR/SIRV Response - Total RR/SIRV Responses, - Total Activities Performed
---

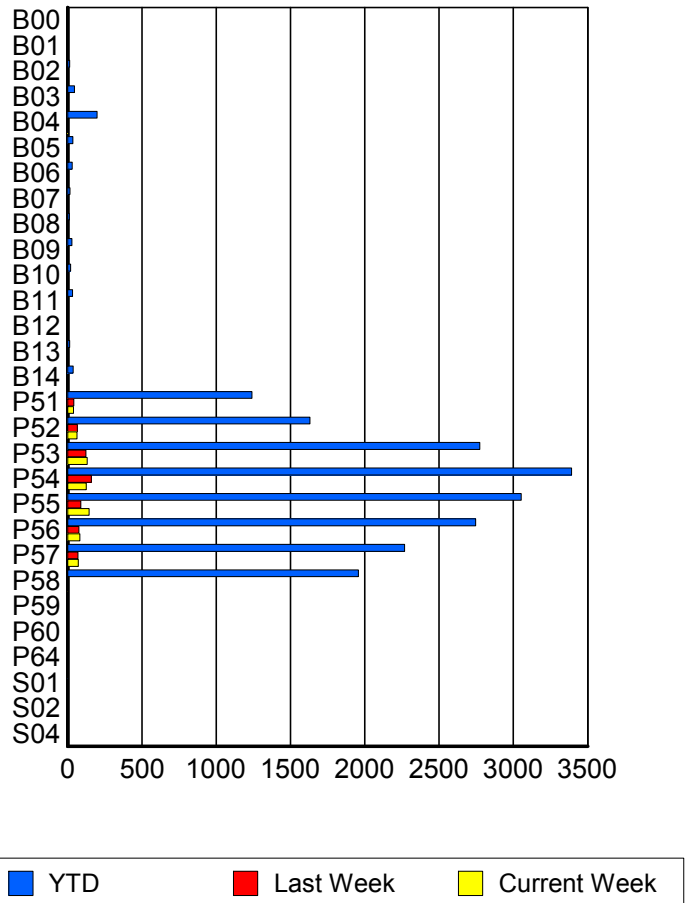
	Current We	Last Week	YTD
Palm Beach	<b>636</b>	<b>601</b>	<b>18,867</b>
	<b>673</b>	<b>628</b>	<b>19,230</b>
	<b>715</b>	<b>654</b>	<b>20,869</b>



## Road Ranger / SIRV Performance By Truck

	Current We	Last Week	YTD
B00	0	0	6
	0	0	6
	0	0	6
B01	0	0	1
	0	0	1
	0	0	1
B02	0	0	14
	0	0	14
	0	0	15
B03	0	1	46
	0	1	46
	0	1	47
B04	3	2	198
	3	2	199
	3	2	223
B05	0	1	34
	0	1	36
	0	1	37
B06	3	1	29
	3	1	30
	3	1	32
B07	0	1	15
	0	1	15
	0	1	15
B08	0	0	11
	0	0	11
	0	0	14

**RR/SIRV  
Responses per  
Truck**



	Current We	Last Week	YTD
B09	0	0	27
	0	0	28
	0	0	29
B10	0	0	19
	0	0	20
	0	0	20
B11	1	0	34
	1	0	34
	1	0	35
B12	0	0	6
	0	0	6
	0	0	7
B13	0	0	14
	0	0	14
	0	0	15
B14	2	0	37
	2	0	38
	2	0	40
P51	40	40	1,229
	40	41	1,241
	41	43	1,296
P52	63	64	1,622
	63	66	1,630
	67	70	1,746
P53	131	119	2,735
	132	123	2,773
	139	123	2,927
P54	122	157	3,353
	126	159	3,391
	136	170	3,641
P55	143	88	3,030
	145	88	3,052
	151	93	3,262
P56	83	75	2,718
	83	75	2,747
	90	76	2,950
P57	71	70	2,246
	71	70	2,267
	77	73	2,414
P58	4	0	1,928
	4	0	1,957
	5	0	2,085
P59	0	0	1
	0	0	1
	0	0	2

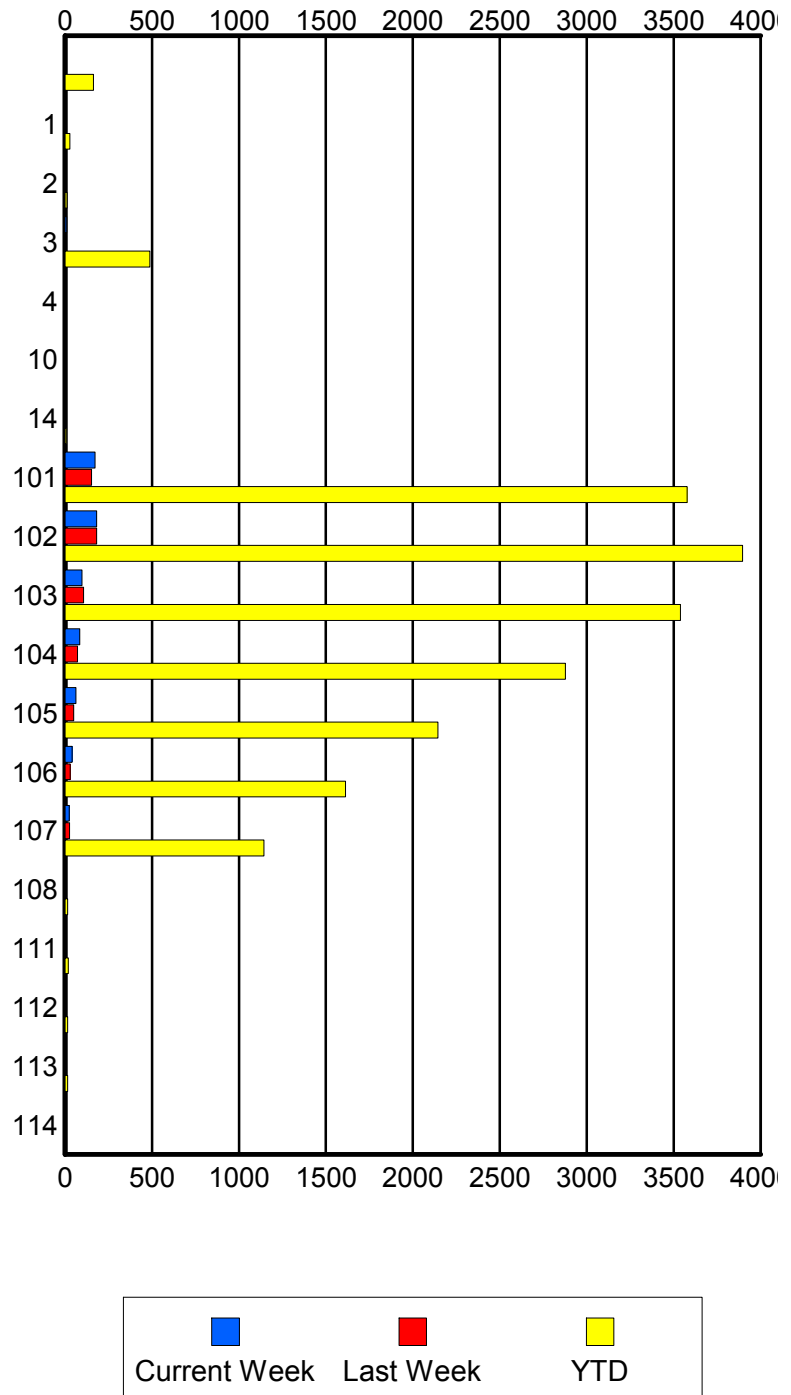
	Current We	Last Week	YTD
P60	0	0	1
	0	0	1
	0	0	1
P64	0	0	1
	0	0	1
	0	0	1
S01	0	0	3
	0	0	3
	0	0	3
S02	0	0	3
	0	0	3
	0	0	3
S04	0	0	2
	0	0	2
	0	0	2

### Road Ranger / SIRV Performance By Beat

	Current We	Last Week	YTD
	3	5	163
	3	5	164
	3	5	169
1	0	0	26
	0	0	27
	0	0	28
2	0	0	11
	0	0	11
	0	0	13
3	9	6	473
	9	6	487
	9	6	524
4	0	0	2
	0	0	2
	0	0	2
10	0	0	6
	0	0	6
	0	0	9
14	0	0	7
	0	0	7
	0	0	7
101	170	150	3,541
	172	152	3,578
	182	160	3,831
102	176	173	3,848
	181	181	3,896
	192	190	4,135
103	96	105	3,497
	97	107	3,538
	101	109	3,796
104	85	70	2,845
	85	71	2,877
	93	74	3,084
105	62	50	2,126
	62	50	2,144
	65	52	2,276
106	40	30	1,595
	40	30	1,613
	45	31	1,724
107	24	25	1,130
	24	26	1,144
	25	27	1,201
108	0	0	13
	0	0	14
	0	0	14

Values presented are:  
 - Total Events with a RR/SIRV Response  
 - Total RR/SIRV Responses,  
 - Total Activities Performed

### RR/SIRV Responses per Beat



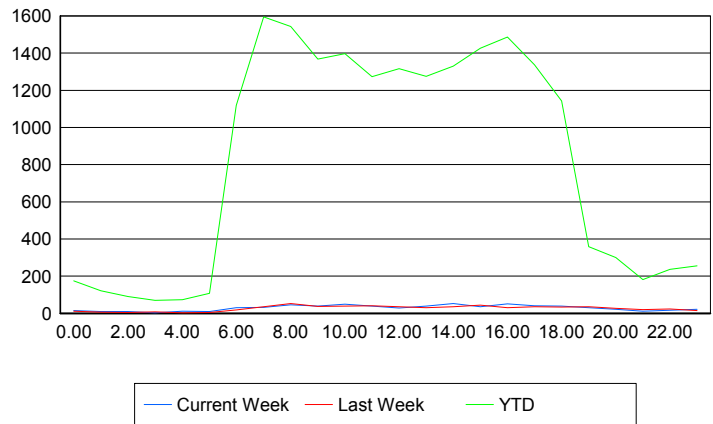
	Current We	Last Week	YTD
111	0	0	18
	0	0	19
	0	0	20
112	0	0	14
	0	0	15
	0	0	16
113	0	0	13
	0	0	14
	0	0	14
114	0	0	6
	0	0	6
	0	0	6

**Road Ranger / SIRV Performance By Time of Day**

Values presented are:  
 - Total Events with a RR/SIRV Response  
 - Total RR/SIRV Responses,  
 - Total Activities Performed

	Current We	Last Week	YTD
12AM-1AM	12	11	166
	14	12	174
	14	13	186
1AM-2AM	9	7	117
	9	7	122
	9	7	130
2AM-3AM	9	4	88
	9	4	90
	9	5	95
3AM-4AM	2	8	67
	2	8	70
	2	8	71
4AM-5AM	9	3	66
	11	3	73
	11	3	79
5AM-6AM	7	4	97
	10	5	108
	10	5	112
6AM-7AM	30	18	1,070
	30	19	1,118
	30	23	1,179
7AM-8AM	31	35	1,520
	32	36	1,595
	35	40	1,712
8AM-9AM	41	50	1,475
	46	53	1,543
	48	53	1,642

**Number of Responses / Hour of the Day**



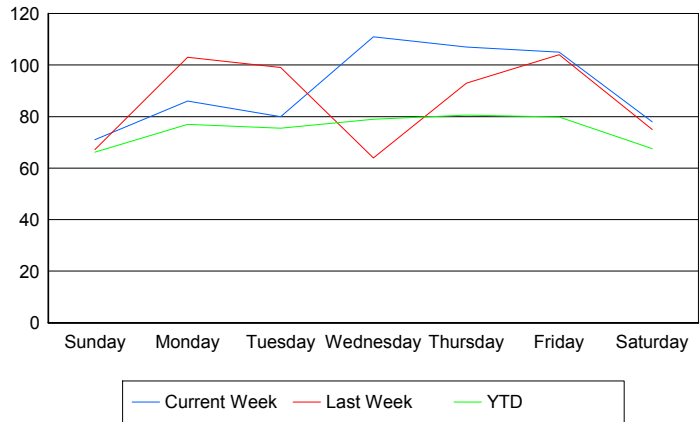
	Current We	Last Week	YTD
9AM-10AM	36	35	1,323
	38	37	1,368
	38	39	1,479
10AM-11AM	48	37	1,350
	49	38	1,398
	54	38	1,476
11AM-12PM	35	39	1,236
	39	40	1,274
	42	41	1,380
12PM-1PM	27	36	1,265
	29	36	1,317
	32	37	1,408
1PM-2PM	34	29	1,229
	38	30	1,276
	39	32	1,368
2PM-3PM	48	36	1,276
	52	36	1,330
	58	37	1,414
3PM-4PM	35	43	1,380
	35	44	1,427
	42	45	1,523
4PM-5PM	48	29	1,443
	51	30	1,487
	52	35	1,582
5PM-6PM	40	33	1,298
	41	35	1,337
	45	35	1,416
6PM-7PM	38	32	1,124
	39	34	1,142
	41	34	1,201
7PM-8PM	28	33	347
	30	35	358
	34	37	382
8PM-9PM	21	25	288
	21	27	301
	22	27	313
9PM-10PM	11	20	171
	11	20	181
	11	20	194
10PM-11PM	16	20	220
	16	24	236
	16	24	251
11PM-12AM	21	14	251
	21	15	256
	21	16	276

## Road Ranger / SIRV Performance By Day of Week

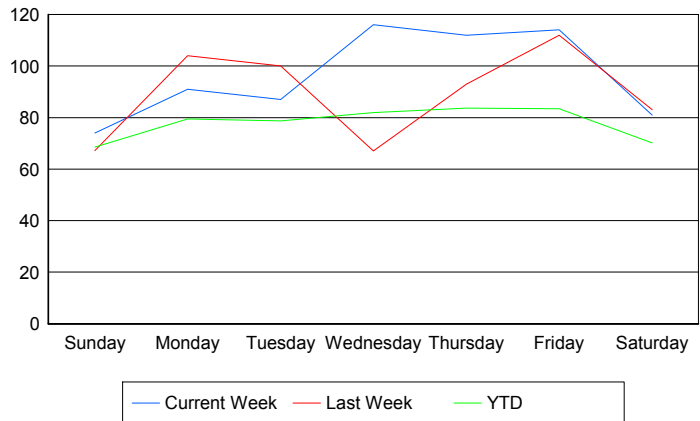
Values presented are:  
 - Total Events with a RR/SIRV Response  
 - Total RR/SIRV Responses,  
 - Total Activities Performed

	Current We	Last Week	YTD
Sunday	69	69	724
	72	69	749
	78	69	800
Monday	86	103	3,391
	91	104	3,472
	96	109	3,705
Tuesday	80	99	3,332
	87	100	3,453
	95	101	3,691
Wednesday	111	64	3,490
	116	67	3,614
	123	73	3,865
Thursday	107	93	3,579
	112	93	3,675
	118	94	3,971
Friday	105	104	3,571
	114	112	3,718
	122	119	3,959
Saturday	78	75	804
	81	83	834
	83	89	878

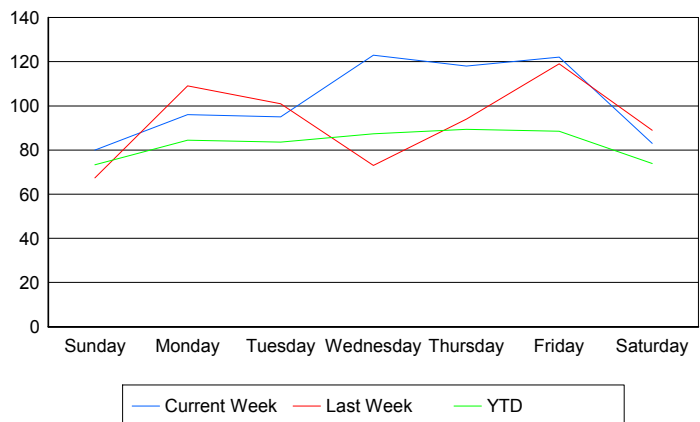
### Avg # of events with a RR/SIRV Response per Day of the Week



### Avg # of RR/SIRV Responses per Day of the Week



### Avg # of RR/SIRV Activities Performed per Day of the Week



### Road Ranger / SIRV Responses per Time of Day and Day of Week

