



# Weekly Performance Measures Report Palm Beach County



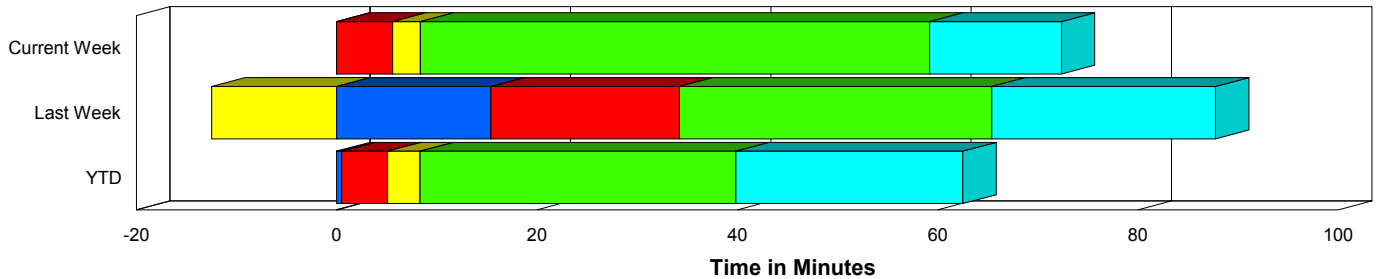
Created on:  
December 28, 2009  
8:55 am

Period From Dec 20, 2009 to Dec 26, 2009

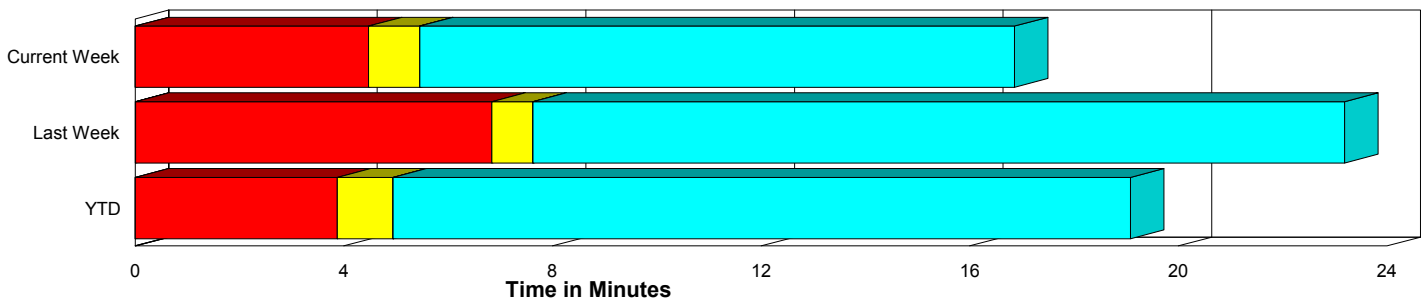
## Performance Measures Summary

	Traffic Events (No Lanes Blocked)			Incidents (Lanes Blocked)		
	<u>This Week</u>	<u>Last Week</u>	<u>YTD</u>	<u>This Week</u>	<u>Last Week</u>	<u>YTD</u>
Number of Events	378	403	17,420	17	35	1,153
TMC Detection (min.)	0.00	0.01	0.00	0.00	15.40	0.50
TMC Verification (min.)	4.48	6.83	3.88	5.60	18.81	4.57
TMC Response (min.)	5.69	7.94	5.46	8.37	6.88	8.55
RR Dispatch Time (min.)	1.51	2.63	1.72	1.76	1.38	3.23
RR Response Time (min.)	4.33	5.45	3.82	6.61	5.49	5.31
Roadway Clearance (min.)				59.19	53.62	47.06
Event Clearance (min.)	17.09	23.51	19.59	72.28	75.70	69.13
# of Events w/ RR/SIRV	366	393	15,624	17	34	964
RR/SIRV Responses	366	393	15,624	17	34	964
RR/SIRV Activities	398	435	16,965	28	39	1,359

### Incident Clearance Time-Line



### Traffic Event (Non-Lane Blockage) Time-Line



<span style="color: blue;">■</span> Avg. TMC Detection Time	<span style="color: green;">■</span> Avg. Time from TMC Response to Roadway Clearance*
<span style="color: red;">■</span> Avg. Time from TMC Detection to TMC Verification	<span style="color: cyan;">■</span> Avg. Time from Roadway Clearance to Incident/Event Clearance**
<span style="color: yellow;">■</span> Avg. Time from TMC Verification to TMC Response	

\* Roadway clearance equals all travel lanes open

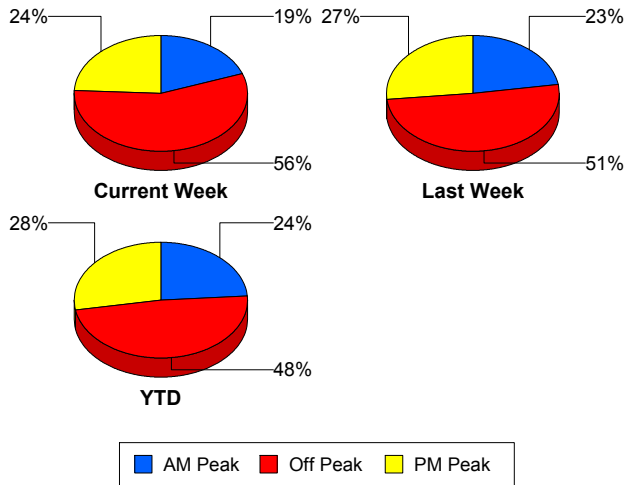
\*\* Incident clearance equals time when last responder has left the scene

## Performance Measures by Peak Period

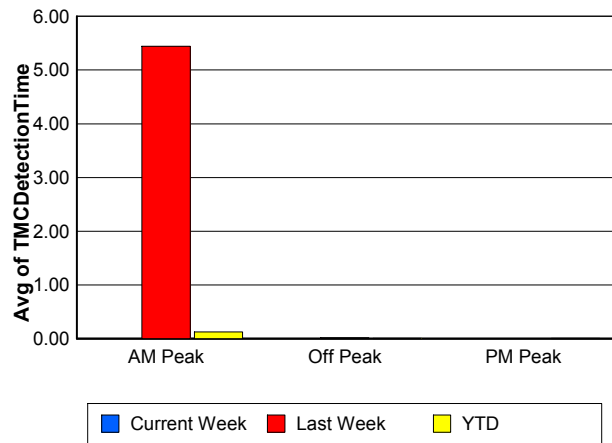
Note: AM peak period is defined as 6am to 10am and PM peak period is defined as 3pm to 7pm.

	AM Peak			Off Peak			PM Peak		
	<u>Current Week</u>	<u>Last Week</u>	<u>YTD</u>	<u>Current Week</u>	<u>Last Week</u>	<u>YTD</u>	<u>Current Week</u>	<u>Last Week</u>	<u>YTD</u>
Number of Events	77	99	4,425	222	222	8,999	96	117	5,149
Number of Incidents	3	6	324	11	19	547	3	10	282
TMC Detection (min.)	0.00	5.44	0.12	0.00	0.02	0.00	0.00	0.00	0.00
TMC Verification (min.)	3.58	10.60	3.38	4.61	6.71	3.71	5.08	7.50	4.76
TMC Response (min.)	4.98	6.52	4.73	6.07	8.22	6.19	5.90	8.22	5.57
RR Dispatch Time (min.)	1.37	1.27	1.27	1.52	2.60	2.29	1.65	3.42	1.57
RR Response Time (min.)	3.61	5.26	3.52	4.73	5.85	4.06	4.41	4.86	4.03
Event Clearance (min.)	17.42	34.99	22.30	20.00	24.32	23.59	19.89	27.86	21.39
Roadway Clearance (min.)	27.52	139.56	40.24	52.62	36.76	47.63	114.91	34.09	53.78
Incident Clearance (min.)	41.38	158.75	67.26	67.66	54.95	66.62	120.12	65.31	76.16
# of Events w/ RR/SIRV	75	93	4,249	214	218	7,438	94	116	4,901
RR/SIRV Responses	75	93	4,249	214	218	7,438	94	116	4,901
RR/SIRV Activities	85	105	4,767	240	243	8,212	101	126	5,345

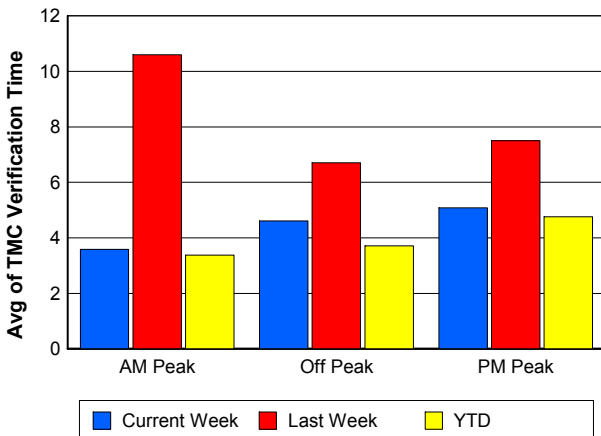
### Number of Events / Peak Period



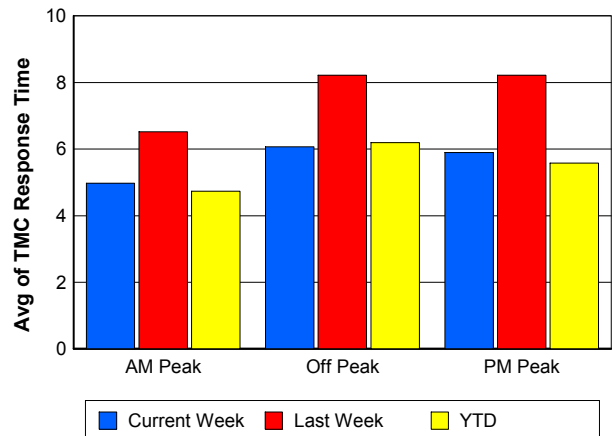
### TMC Detection Time



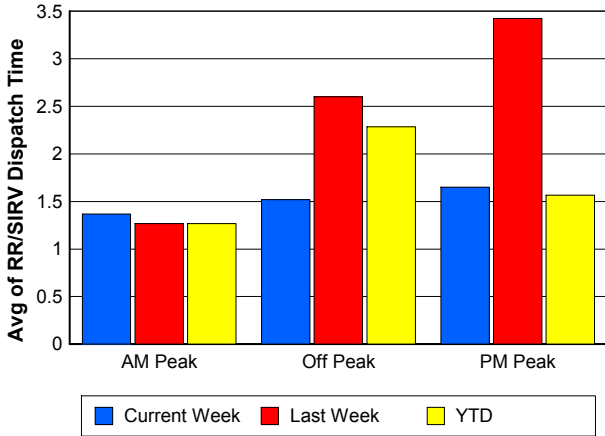
### TMC Verification Time



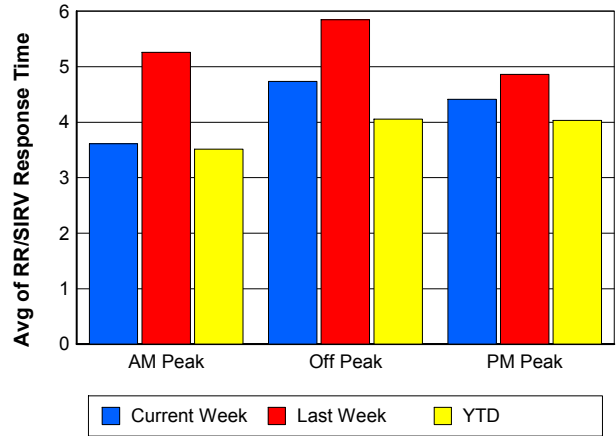
### TMC Response Time



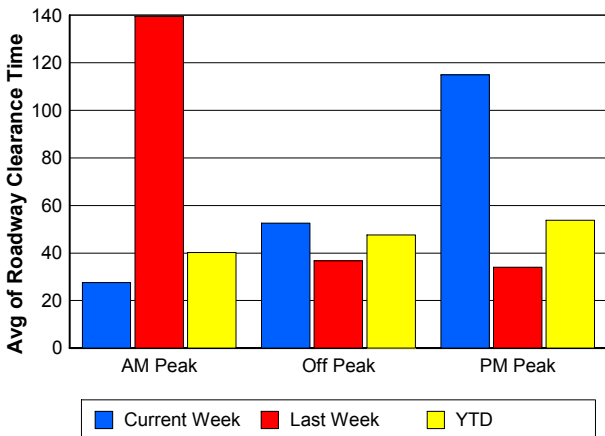
## Road Ranger / SIRV Dispatch Time



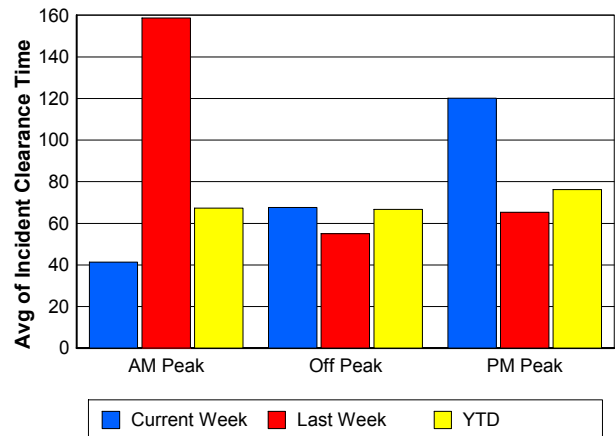
## Road Ranger / SIRV Response Time



## Roadway Clearance Time (2A)



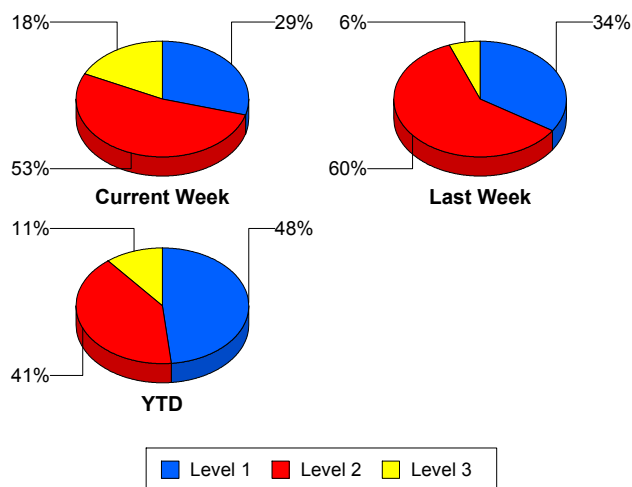
## Incident Clearance Time (3B)



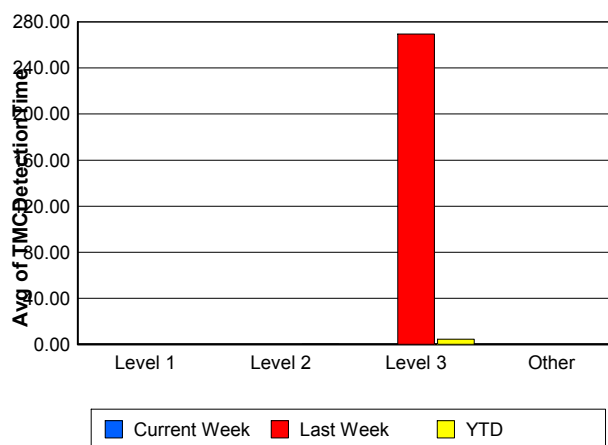
## Performance Measures by Severity

	Level 1			Level 2			Level 3			Other		
	<u>This Week</u>	<u>Last Week</u>	<u>YTD</u>	<u>This Week</u>	<u>Last Week</u>	<u>YTD</u>	<u>This Week</u>	<u>Last Week</u>	<u>YTD</u>	<u>This Week</u>	<u>Last Week</u>	<u>YTD</u>
Number of Events	5	12	556	9	21	473	3	2	124	378	403	17,420
Number of Incidents	5	12	556	9	21	473	3	2	124	0	0	0
TMC Detection (min.)	0.00	0.00	0.01	0.00	0.00	0.03	0.00	269.53	4.47	0.00	0.01	0.00
TMC Verification (min.)	3.82	1.52	2.47	6.83	4.81	5.95	4.85	269.53	8.83	4.48	6.83	3.88
TMC Response (min.)	10.47	3.97	4.57	8.34	9.31	9.81	4.95	0.00	25.00	5.69	7.94	5.46
RR Dispatch Time (min.)	1.22	0.76	1.10	2.32	1.90	2.58	0.97	0.00	17.99	1.51	2.63	1.72
RR Resp. Time (min.)	9.26	3.21	3.49	6.02	7.41	7.24	3.98	0.00	6.82	4.33	5.45	3.82
Event Clearance (min.)	27.84	38.88	42.03	67.35	68.94	70.93	161.13	367.69	183.80	17.09	23.51	19.59
Roadway Clear. (min.)	16.55	12.53	14.59	49.39	50.02	53.14	159.63	337.99	169.45			
Incident Clearance (min.)	27.84	38.88	42.03	67.35	68.94	70.93	161.13	367.69	183.80			
# of Events w/ RR/SIRV	5	12	485	9	20	392	3	2	87	366	393	15,624
RR/SIRV Responses	5	12	485	9	20	392	3	2	87	366	393	15,624
RR/SIRV Activities	6	13	617	15	23	600	7	3	142	398	435	16,965

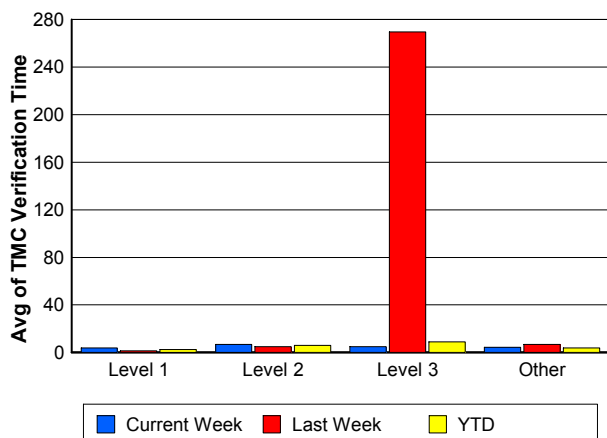
### Number of Events / Severity



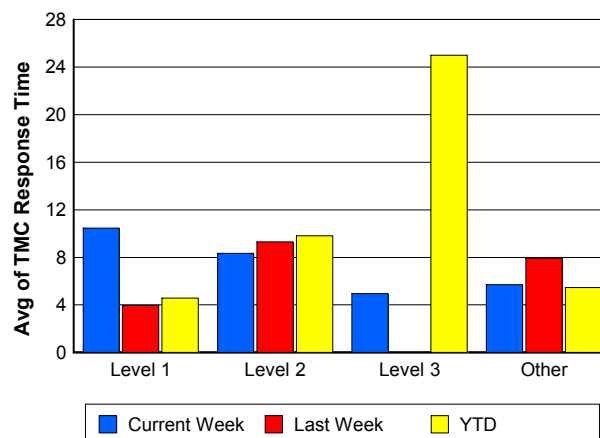
### TMC Detection Time



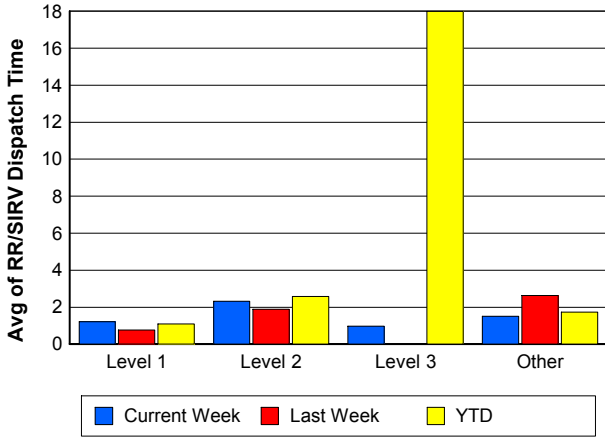
### TMC Verification Time



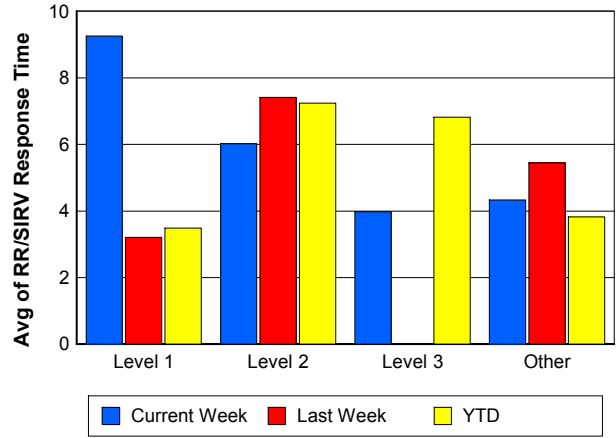
### TMC Response Time



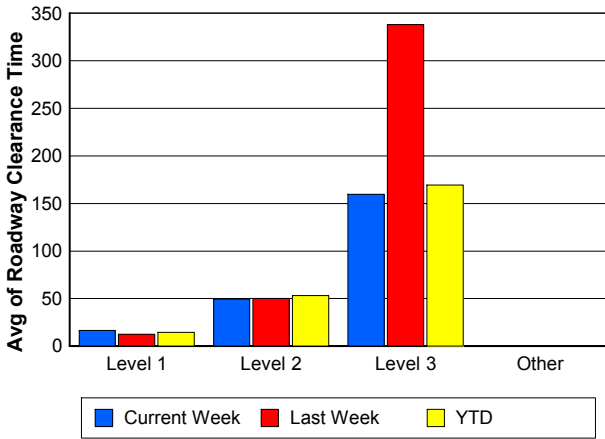
## Road Ranger / SIRV Dispatch Time



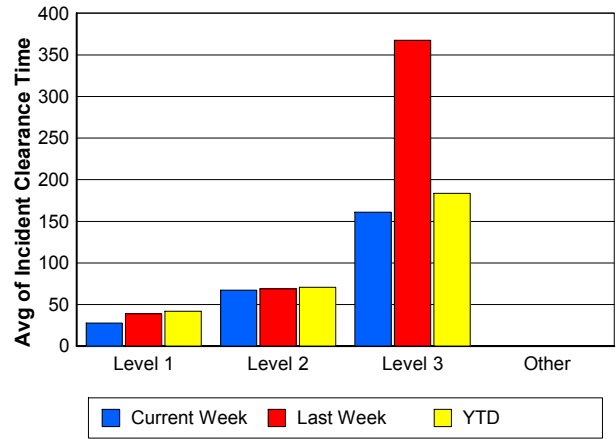
## Road Ranger / SIRV Response Time



## Roadway Clearance Time (2A)



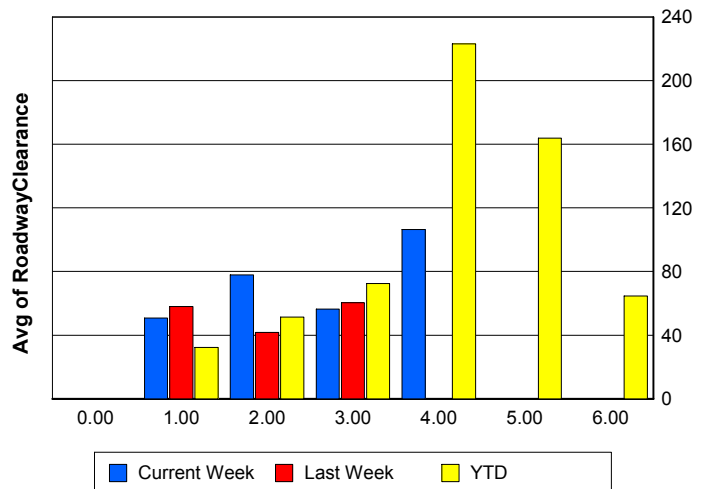
## Incident Clearance Time (3B)



## Roadway Clearance by Maximum Number of Lanes Blocked

	Current Week	Last Week	YTD
0			
1	50.80	58.08	32.28
2	77.95	41.80	51.33
3	56.42	60.34	72.55
4	106.30	0.00	223.06
5	0.00	0.00	163.86
6	0.00	0.00	64.70

## Roadway Clearance Time (2A)



## Performance Measures by Roadway

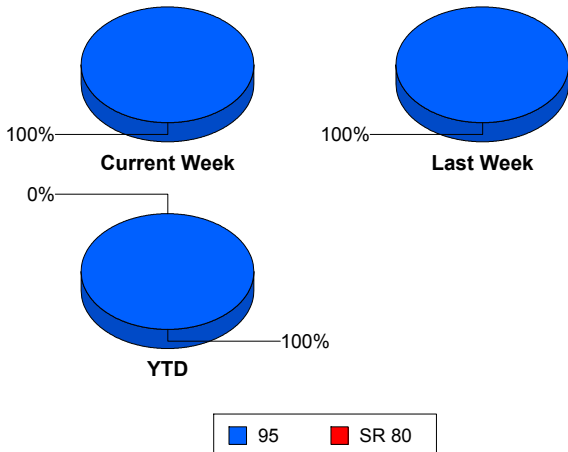
**95**

	<u>Current Week</u>	<u>Last Week</u>	<u>YTD</u>
Number of Events	395	438	18,569
Number of Incidents	17	35	1,150
TMC Detection (min.)	0.00	1.24	0.03
TMC Verification (min.)	4.53	7.80	3.92
TMC Response (min.)	5.81	7.85	5.64
RR Dispatch Time (min.)	1.52	2.53	1.81
RR Resp. Time (min.)	4.43	5.45	3.91
Event Clearance (min.)	19.47	27.68	22.37
Roadway Clear. (min.)	59.19	53.62	42.51
Incident Clearance (min.)	72.28	75.70	64.50
# of Events w/ RR/SIRV	383	427	16,588
RR/SIRV Responses	383	427	16,588
RR/SIRV Activities	426	474	18,324

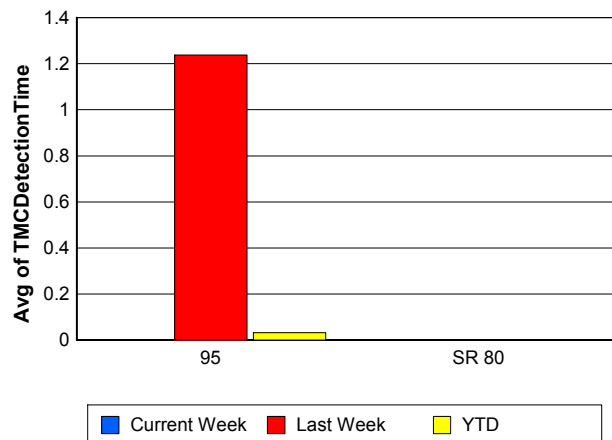
**SR 80**

	<u>YTD</u>
Number of Events	4
Number of Incidents	3
TMC Detection (min.)	0.00
TMC Verification (min.)	0.00
TMC Response (min.)	
RR Dispatch Time (min.)	
RR Resp. Time (min.)	
Event Clearance (min.)	1,409.98
Roadway Clear. (min.)	1,789.50
Incident Clearance (min.)	1,847.09
# of Events w/ RR/SIRV	0
RR/SIRV Responses	0
RR/SIRV Activities	0

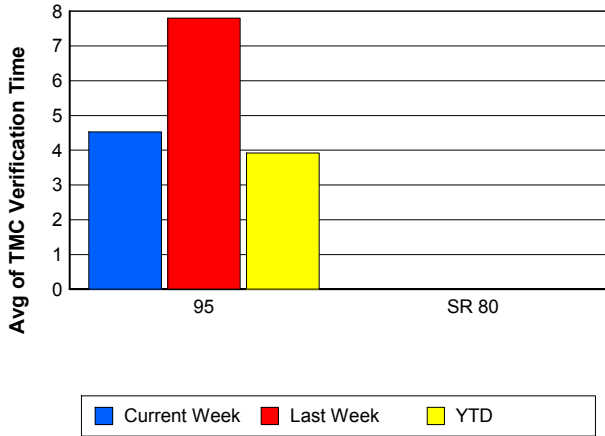
### Number of Events / Roadway



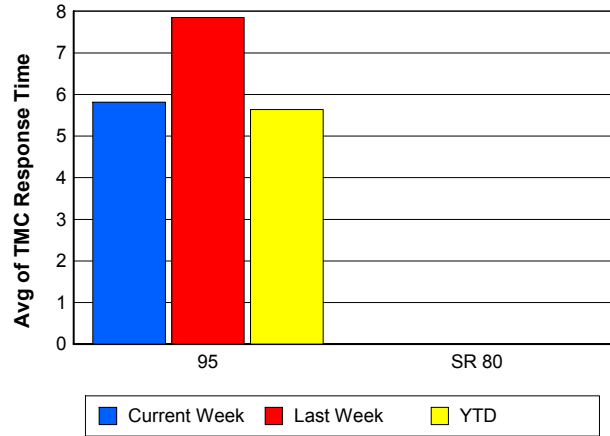
### TMC Detection Time



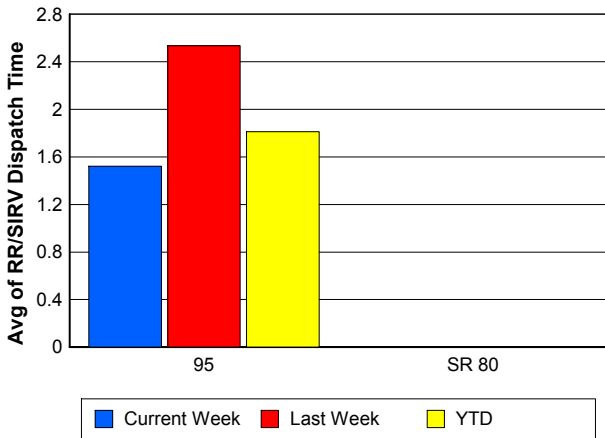
### TMC Verification Time



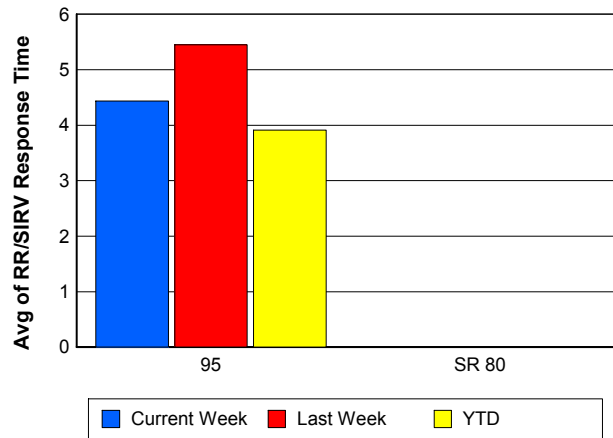
### TMC Response Time



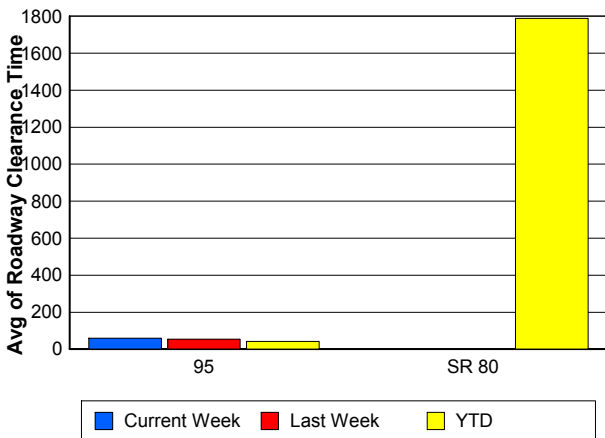
### Road Ranger / SIRV Dispatch Time



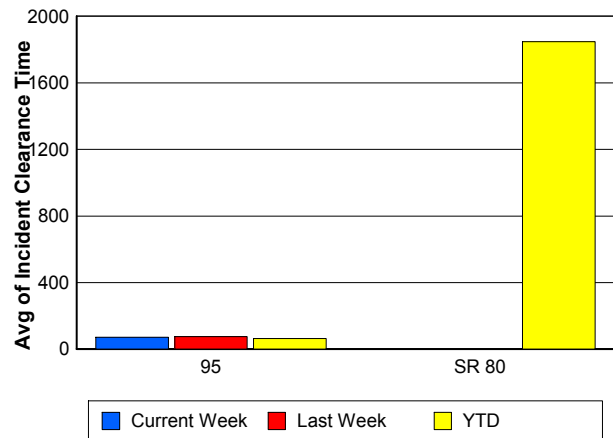
### Road Ranger / SIRV Response Time



### Roadway Clearance Time (2A)



### Incident Clearance Time (3B)



## Performance Measures by Event Type

### Accident

	<u>Current Week</u>	<u>Last Week</u>	<u>YTD</u>
Number of Events	15	59	1,589
Number of Incidents	8	28	754
TMC Detection (min.)	0.00	9.14	0.35
TMC Verification (min.)	6.80	15.36	5.33
TMC Response (min.)	7.70	8.15	8.29
RR Dispatch Time (min.)	1.49	1.38	2.46
RR Response Time (min.)	6.21	6.76	5.82
Event Clearance (min.)	56.90	67.26	58.94
Roadway Clearance (min.)	47.47	58.36	45.90
Incident Clearance (min.)	67.49	79.57	73.60
# of Events w/ RR/SIRV	15	58	1,358
RR/SIRV Assists	15	58	1,358
RR/SIRV Activities	21	66	1,701

### Debris on Roadway

	<u>Current Week</u>	<u>Last Week</u>	<u>YTD</u>
Number of Events	24	21	1,269
Number of Incidents	0	0	39
TMC Detection (min.)	0.00	0.00	0.00
TMC Verification (min.)	9.80	15.11	7.92
TMC Response (min.)	10.07	15.10	8.16
RR Dispatch Time (min.)	1.87	3.36	1.99
RR Response Time (min.)	8.20	11.73	6.17
Event Clearance (min.)	12.38	22.16	12.53
Roadway Clearance (min.)			20.86
Incident Clearance (min.)			23.83
# of Events w/ RR/SIRV	24	21	1,250
RR/SIRV Assists	24	21	1,250
RR/SIRV Activities	25	24	1,334

### Disabled Vehicle

	<u>Current Week</u>	<u>Last Week</u>	<u>YTD</u>
Number of Events	338	344	14,206
Number of Incidents	6	6	244
TMC Detection (min.)	0.00	0.00	0.00
TMC Verification (min.)	4.10	5.61	3.67
TMC Response (min.)	5.21	6.74	4.90
RR Dispatch Time (min.)	1.46	2.54	1.57
RR Response Time (min.)	3.91	4.39	3.42
Event Clearance (min.)	17.34	20.94	18.11
Roadway Clearance (min.)	30.46	35.59	25.88
Incident Clearance (min.)	40.42	64.65	36.00
# of Events w/ RR/SIRV	334	338	13,419
RR/SIRV Assists	334	338	13,419
RR/SIRV Activities	368	378	14,781

## Emergency Vehicles

	<u>YTD</u>
Number of Events	17
Number of Incidents	10
TMC Detection (min.)	0.01
TMC Verification (min.)	1.87
TMC Response (min.)	7.80
RR Dispatch Time (min.)	2.77
RR Response Time (min.)	4.75
Event Clearance (min.)	43.12
Roadway Clearance (min.)	39.55
Incident Clearance (min.)	44.69
# of Events w/ RR/SIRV	8
RR/SIRV Assists	8
RR/SIRV Activities	10

## Other

	<u>Current Week</u>	<u>Last Week</u>	<u>YTD</u>
Number of Events	13	9	983
Number of Incidents	0	0	7
TMC Detection (min.)	0.00	0.38	0.00
TMC Verification (min.)	2.47	1.02	1.24
TMC Response (min.)	17.54	0.00	14.05
RR Dispatch Time (min.)	4.19	1.23	6.33
RR Response Time (min.)	11.03	0.00	6.64
Event Clearance (min.)	14.05	12.54	32.65
Roadway Clearance (min.)			40.35
Incident Clearance (min.)			52.93
# of Events w/ RR/SIRV	5	5	374
RR/SIRV Assists	5	5	374
RR/SIRV Activities	4	1	296

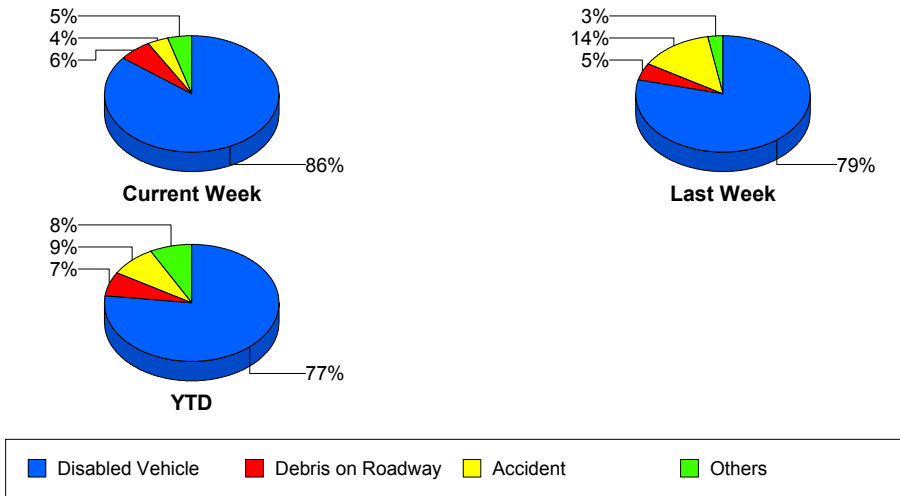
## Police Activity

	<u>Current Week</u>	<u>Last Week</u>	<u>YTD</u>
Number of Events	4	1	367
Number of Incidents	2	1	62
TMC Detection (min.)	0.00	0.00	0.08
TMC Verification (min.)	4.60	0.00	0.73
TMC Response (min.)	11.78	0.93	11.77
RR Dispatch Time (min.)	0.97	0.85	4.94
RR Response Time (min.)	10.80	0.08	6.74
Event Clearance (min.)	105.14	33.65	29.48
Roadway Clearance (min.)	186.30	29.03	70.37
Incident Clearance (min.)	185.92	33.65	84.67
# of Events w/ RR/SIRV	4	1	65
RR/SIRV Assists	4	1	65
RR/SIRV Activities	7	1	76

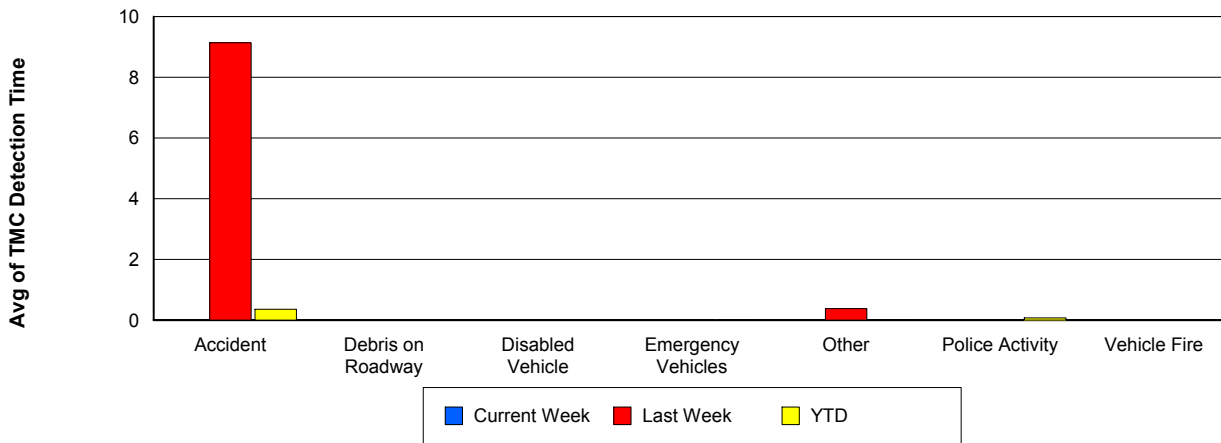
## Vehicle Fire

	<u>Current Week</u>	<u>Last Week</u>	<u>YTD</u>
Number of Events	1	2	47
Number of Incidents	1	0	36
TMC Detection (min.)	0.00	0.00	0.00
TMC Verification (min.)	15.17	21.48	5.67
TMC Response (min.)	15.12	21.47	17.68
RR Dispatch Time (min.)	2.40	5.70	9.52
RR Response Time (min.)	12.72	15.77	8.16
Event Clearance (min.)	74.52	66.58	80.37
Roadway Clearance (min.)	71.00		60.69
Incident Clearance (min.)	74.52		87.16
# of Events w/ RR/SIRV	1	2	34
RR/SIRV Assists	1	2	34
RR/SIRV Activities	1	2	45

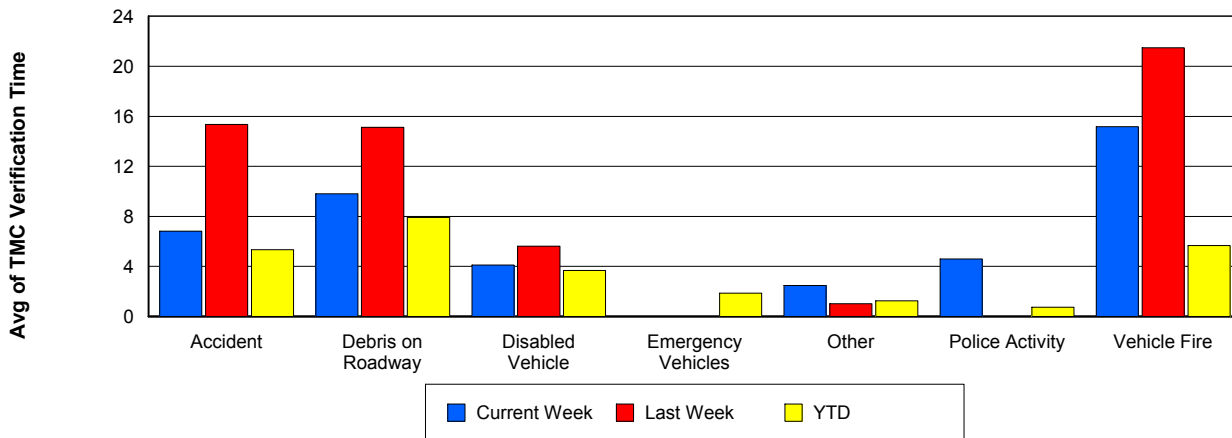
## Number of Events / Event Type



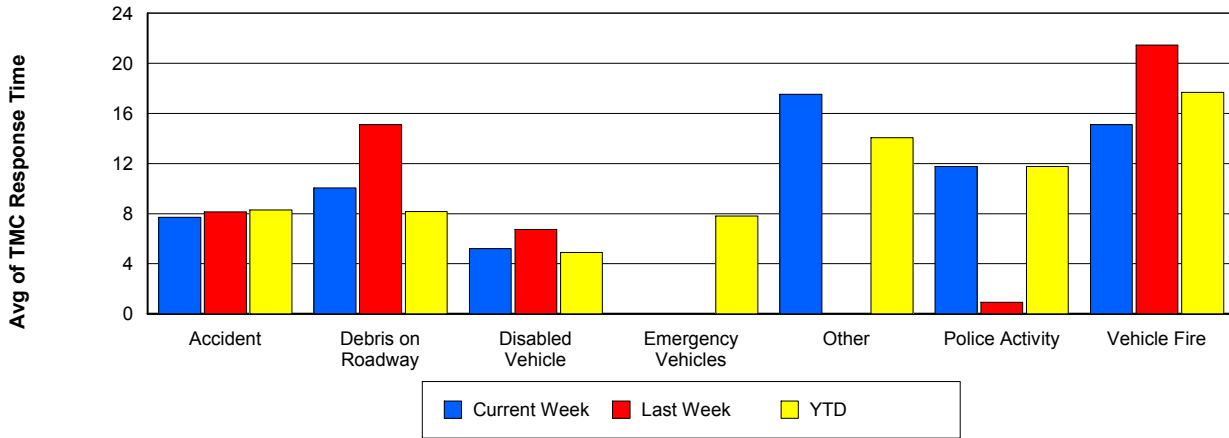
## TMC Detection Time



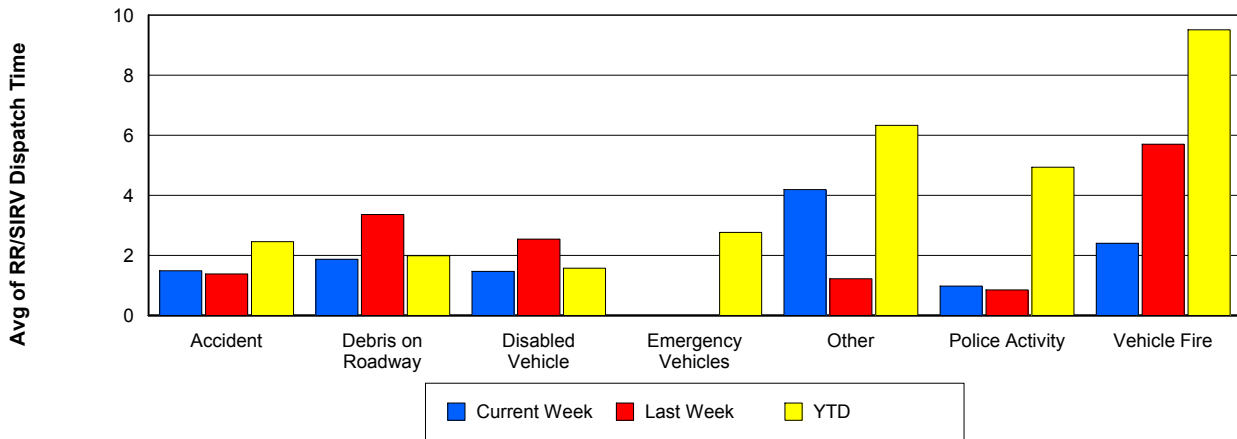
## TMC Verification Time



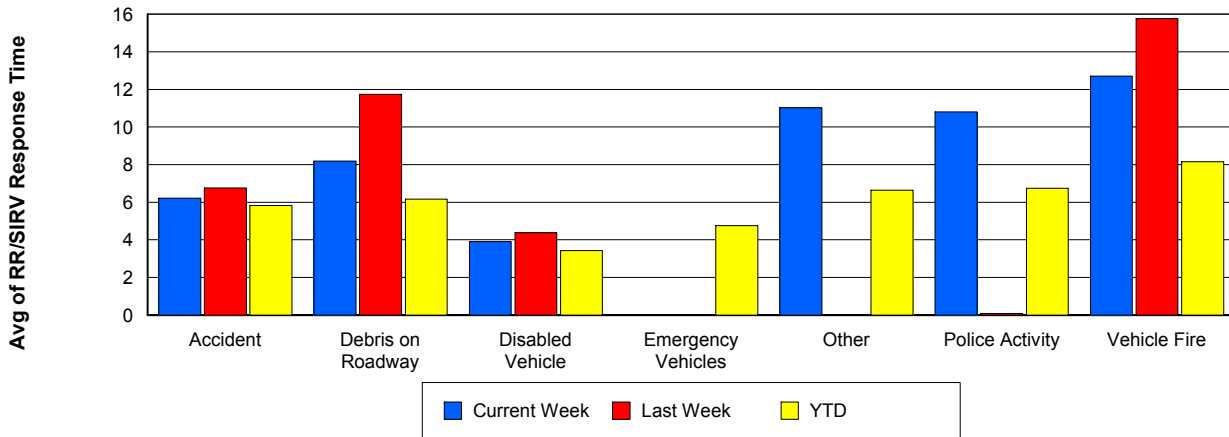
## TMC Response Time



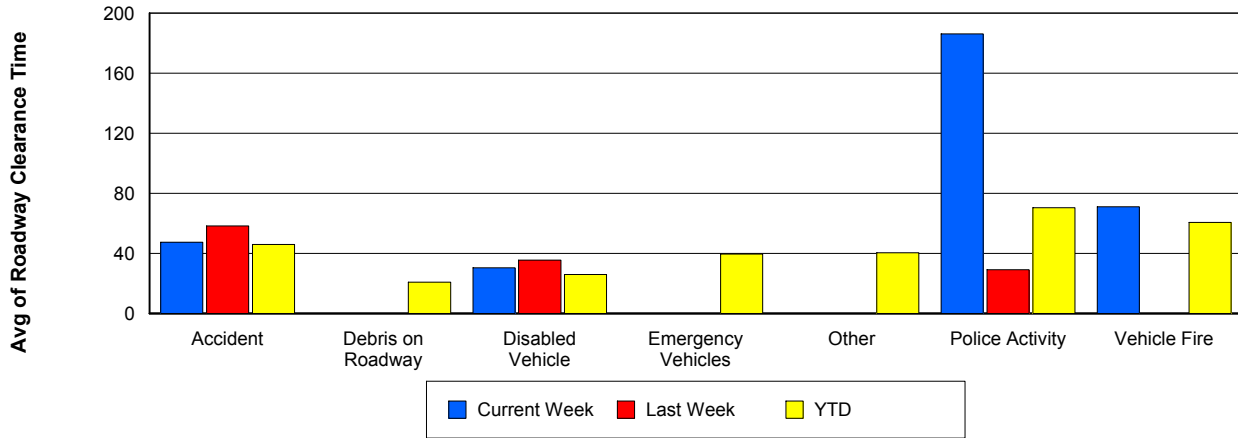
## Road Ranger / SIRV Dispatch Time



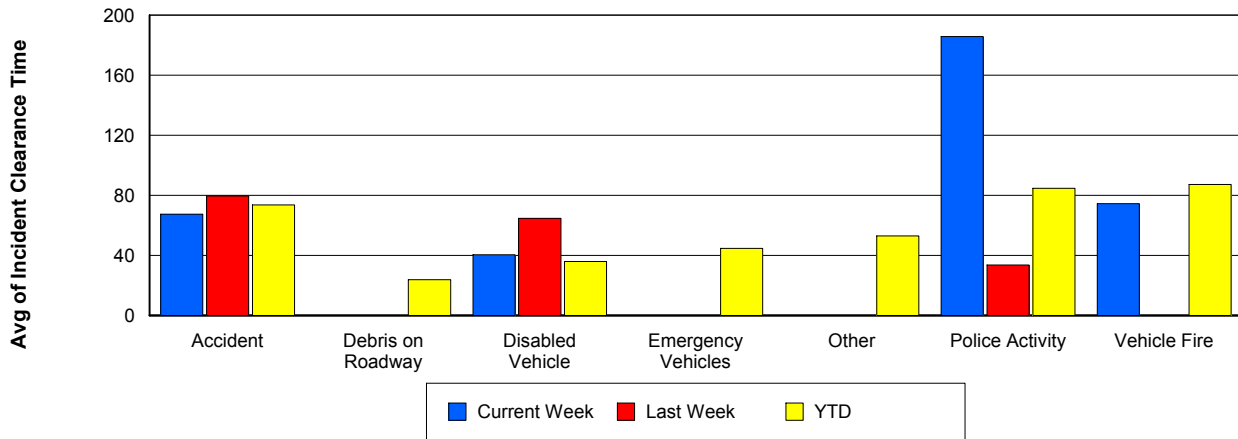
## Road Ranger / SIRV Response Time



## Roadway Clearance Time (2A)



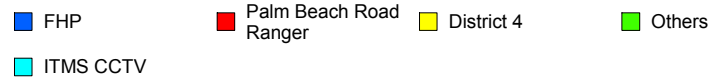
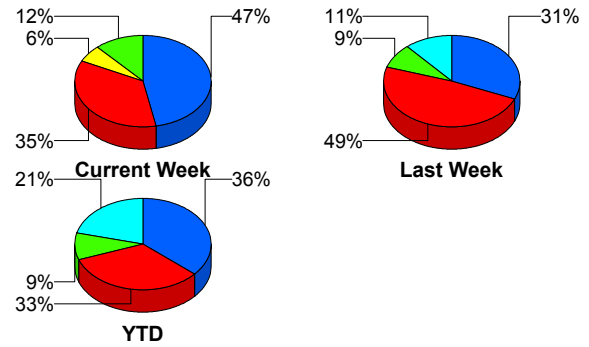
## Incident Clearance Time (3B)



## Incident Detection Methods

	Current Week	Last Week	YTD
Broward CCTV	0	1	12
Broward Road Ranger	0	0	8
Broward TMC	0	1	8
Broward VideoWall	0	0	1
Construction CEI	0	0	2
District 4	1	0	24
Emergency Operations	0	0	1
FDOT Maintenance	0	0	2
FHP	8	11	418
I-95 Construction PIO	0	0	5
ITMS	1	0	15
ITMS CCTV	1	4	244
Local Police	0	0	1
Media	0	0	3
Motorist	0	1	19
Other	0	0	1
Palm Beach Road Ran	6	17	383
Road Watcher	0	0	2
SmarTraveler (511)	0	0	4
<b>Total</b>	<b>17</b>	<b>35</b>	<b>1,153</b>

### Total Incidents by Detection Method

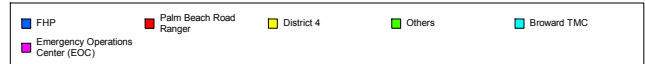
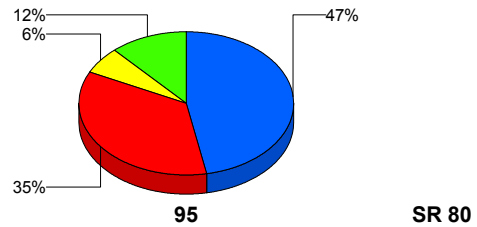


## Incident Detection Methods by Roadway

		Current Week	Last Week	YTD
95	Broward CCTV	0	1	12
	Broward Road Ranger	0	0	8
	Broward TMC	0	1	8
	Broward VideoWall	0	0	1
	Construction CEI	0	0	2
	District 4	1	0	24
	FDOT Maintenance	0	0	2
	FHP	8	11	417
	I-95 Construction PIO	0	0	5
	ITMS	1	0	14
	ITMS CCTV	1	4	244
	Local Police	0	0	1
	Media	0	0	3
	Motorist	0	1	19
	Other	0	0	1
	Palm Beach Road Ran	6	17	383
	Road Watcher	0	0	2
	SmarTraveler (511)	0	0	4
	<b>Total</b>	<b>17</b>	<b>35</b>	<b>1,150</b>
SR 80	Emergency Operations	0	0	1
	FHP	0	0	1
	ITMS	0	0	1
	<b>Total</b>	<b>0</b>	<b>0</b>	<b>3</b>
<b>Total</b>	<b>17</b>	<b>35</b>	<b>1,153</b>	

Total Events by Roadway and Detection Method

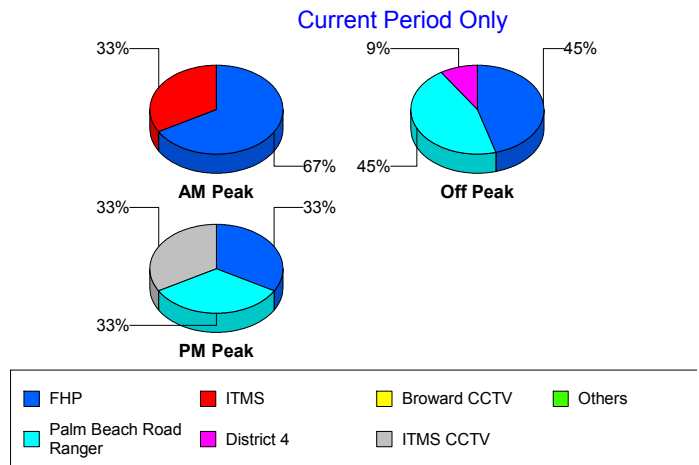
Current Period Only



## Incident Detection Methods by Peak Period

		Current Week	Last Week	YTD
AM Peak	Broward CCTV	0	0	2
	Broward Road Ranger	0	0	3
	Broward TMC	0	0	2
	Construction CEI	0	0	1
	District 4	0	0	11
	FHP	2	5	121
	I-95 Construction PIO	0	0	2
	ITMS	1	0	7
	ITMS CCTV	0	0	44
	Motorist	0	0	9
	Palm Beach Road Ran	0	1	118
	Road Watcher	0	0	1
	SmarTraveler (511)	0	0	3
	<b>Total</b>	<b>3</b>	<b>6</b>	<b>324</b>
	Off Peak	Broward CCTV	0	0
Broward Road Ranger		0	0	2
Broward TMC		0	0	4
Broward VideoWall		0	0	1
Construction CEI		0	0	1
District 4		1	0	10
FDOT Maintenance		0	0	2
FHP		5	4	214
I-95 Construction PIO		0	0	3
ITMS		0	0	7
ITMS CCTV		0	1	127
Motorist		0	1	6
Other		0	0	1
Palm Beach Road Ran		5	13	162
Road Watcher		0	0	1
SmarTraveler (511)	0	0	1	
<b>Total</b>	<b>11</b>	<b>19</b>	<b>547</b>	

Total Events by Peak Period and Detection Method

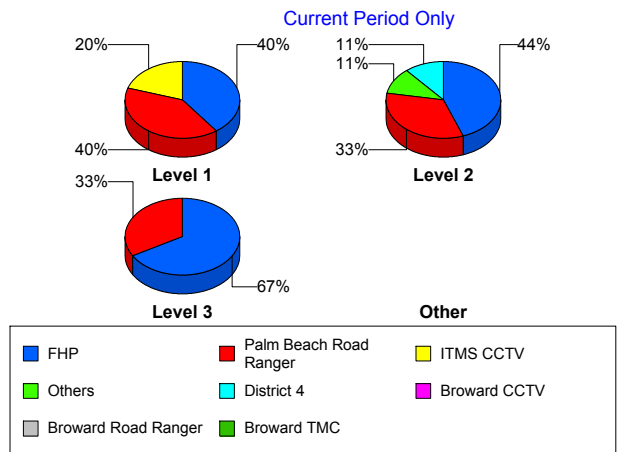


		Current Week	Last Week	YTD
PM Peak	Broward CCTV	0	1	5
	Broward Road Ranger	0	0	3
	Broward TMC	0	1	2
	District 4	0	0	3
	Emergency Operations	0	0	1
	FHP	1	2	83
	ITMS	0	0	1
	ITMS CCTV	1	3	73
	Local Police	0	0	1
	Media	0	0	3
	Motorist	0	0	4
	Palm Beach Road Ran	1	3	103
	Total	3	10	282
Total		17	35	1,153

### Incident Detection Methods by Severity

		Current Week	Last Week	YTD
Level 1	Broward CCTV	0	1	8
	Broward Road Ranger	0	0	4
	Broward TMC	0	0	3
	District 4	0	0	16
	FHP	2	2	139
	I-95 Construction PIO	0	0	4
	ITMS	0	0	5
	ITMS CCTV	1	1	108
	Local Police	0	0	1
	Motorist	0	1	12
	Other	0	0	1
	Palm Beach Road Ran	2	7	253
	Road Watcher	0	0	1
	SmarTraveler (511)	0	0	1
	Total	5	12	556

**Total Events by Severity and Detection Method**



		Current Week	Last Week	YTD
Level 2	Broward CCTV	0	0	2
	Broward Road Ranger	0	0	3
	Broward TMC	0	1	3
	Broward VideoWall	0	0	1
	Construction CEI	0	0	1
	District 4	1	0	7
	FDOT Maintenance	0	0	2
	FHP	4	9	220
	I-95 Construction PIO	0	0	1
	ITMS	1	0	8
	ITMS CCTV	0	3	103
	Media	0	0	2
	Motorist	0	0	6
	Palm Beach Road Ran	3	8	110
	Road Watcher	0	0	1
	SmarTraveler (511)	0	0	3
	Total	9	21	473
Level 3	Broward CCTV	0	0	2
	Broward Road Ranger	0	0	1
	Broward TMC	0	0	2
	Construction CEI	0	0	1
	District 4	0	0	1
	Emergency Operations	0	0	1
	FHP	2	0	59
	ITMS	0	0	2
	ITMS CCTV	0	0	33
	Media	0	0	1
	Motorist	0	0	1
	Palm Beach Road Ran	1	2	20
	Total	3	2	124
Total	17	35	1,153	

# Road Ranger / SIRV Performance Measures

## Road Ranger / SIRV Performance By County

Values presented are:  
 - Total Events with a RR/SIRV Response  
 - Total RR/SIRV Responses,  
 - Total Activities Performed

	Current We	Last Week	YTD
Palm Beach	522	546	21,744
	541	571	22,200
	578	609	24,076

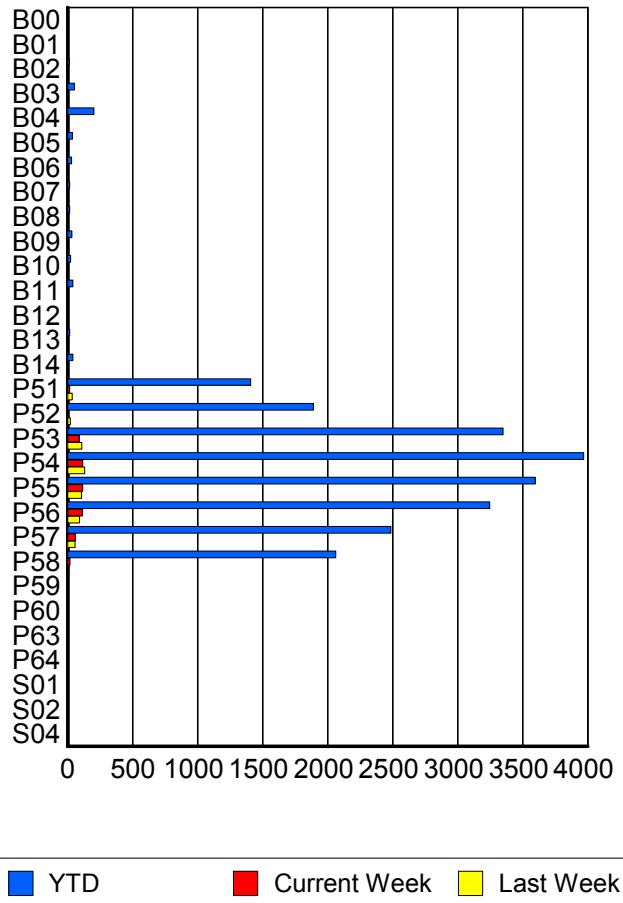
RR/SIRV Responses per County



## Road Ranger / SIRV Performance By Truck

	Current We	Last Week	YTD
B00	0	0	7
	0	0	7
	0	0	7
B01	0	0	1
	0	0	1
	0	0	1
B02	0	0	14
	0	0	14
	0	0	15
B03	1	1	53
	1	1	53
	1	1	54
B04	4	0	202
	4	0	203
	4	0	227
B05	0	0	35
	0	0	37
	0	0	38
B06	0	0	30
	0	0	31
	0	0	33
B07	0	0	17
	0	0	17
	0	0	17
B08	0	1	16
	0	1	16
	0	1	19

RR/SIRV Responses per Truck



	Current We	Last Week	YTD
B09	0	0	33
	0	0	34
	0	0	37
B10	0	0	22
	0	0	23
	0	0	23
B11	1	0	41
	1	0	41
	1	0	42
B12	0	0	6
	0	0	6
	0	0	7
B13	0	1	16
	0	1	16
	0	1	17
B14	2	1	40
	2	1	41
	2	1	43
P51	17	34	1,394
	17	35	1,409
	18	36	1,472
P52	0	22	1,880
	0	22	1,890
	0	23	2,020
P53	89	104	3,300
	89	108	3,348
	100	115	3,542
P54	116	130	3,926
	116	131	3,970
	122	142	4,279
P55	114	105	3,565
	117	107	3,597
	122	114	3,837
P56	110	91	3,204
	114	92	3,245
	122	99	3,488
P57	60	58	2,463
	61	58	2,486
	67	62	2,644
P58	19	9	2,033
	19	9	2,062
	19	9	2,197
P59	0	0	1
	0	0	1
	0	0	2

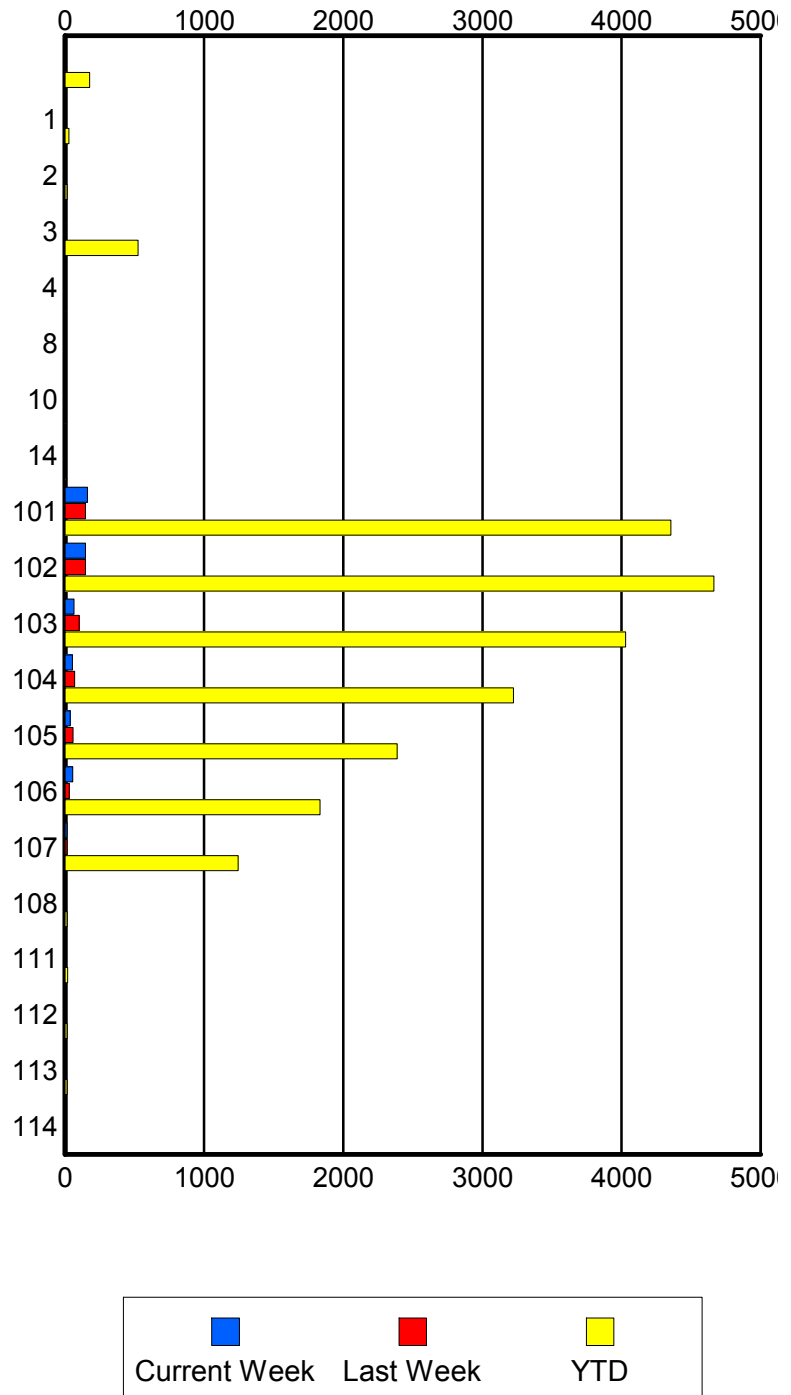
	Current We	Last Week	YTD
P60	0	0	1
	0	0	1
	0	0	1
P63	0	5	5
	0	5	5
	0	5	5
P64	0	0	1
	0	0	1
	0	0	1
S01	0	0	3
	0	0	3
	0	0	3
S02	0	0	3
	0	0	3
	0	0	3
S04	0	0	2
	0	0	2
	0	0	2

### Road Ranger / SIRV Performance By Beat

	Current We	Last Week	YTD
	2	2	175
	2	2	176
	2	2	181
1	0	0	27
	0	0	28
	0	0	29
2	2	0	14
	2	0	14
	2	0	16
3	6	4	510
	6	4	524
	6	4	563
4	0	0	2
	0	0	2
	0	0	2
8	0	0	1
	0	0	1
	0	0	1
10	0	0	6
	0	0	6
	0	0	9
14	0	0	7
	0	0	7
	0	0	7
101	156	144	4,300
	160	146	4,354
	171	153	4,655
102	146	143	4,607
	147	147	4,664
	161	155	4,954
103	64	99	3,979
	64	102	4,029
	69	115	4,327
104	52	69	3,184
	54	69	3,222
	56	73	3,454
105	36	55	2,364
	36	57	2,387
	38	63	2,539
106	54	29	1,811
	55	29	1,832
	58	29	1,960
107	15	15	1,230
	15	15	1,244
	15	15	1,309

Values presented are:  
 - Total Events with a RR/SIRV Response  
 - Total RR/SIRV Responses,  
 - Total Activities Performed

### RR/SIRV Responses per Beat



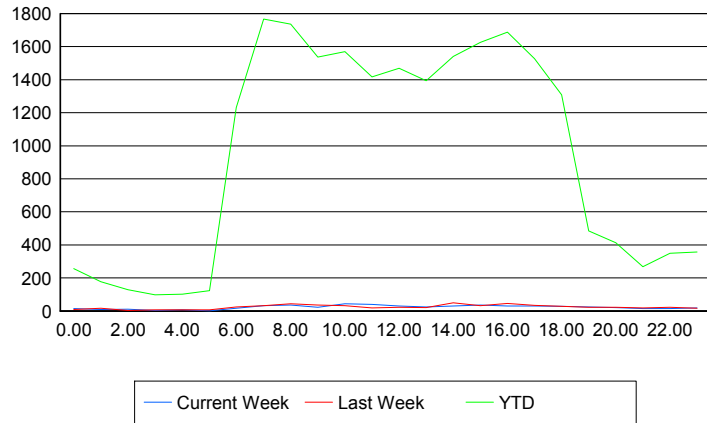
	Current We	Last Week	YTD
108	0	0	13
	0	0	14
	0	0	14
111	0	0	18
	0	0	19
	0	0	20
112	0	0	14
	0	0	15
	0	0	16
113	0	0	13
	0	0	14
	0	0	14
114	0	0	6
	0	0	6
	0	0	6

### Road Ranger / SIRV Performance By Time of Day

Values presented are:  
- Total Events with a RR/SIRV Response  
- Total RR/SIRV Responses,  
- Total Activities Performed

	Current We	Last Week	YTD
12AM-1AM	15	8	247
	15	9	256
	18	10	274
1AM-2AM	9	16	169
	9	17	178
	10	21	191
2AM-3AM	8	4	125
	10	4	129
	11	4	138
3AM-4AM	4	5	93
	4	6	97
	4	6	99
4AM-5AM	6	7	95
	6	7	102
	7	7	110
5AM-6AM	1	5	111
	1	6	124
	1	6	128
6AM-7AM	15	23	1,179
	16	24	1,232
	17	25	1,299
7AM-8AM	32	30	1,686
	33	32	1,768
	34	33	1,898

### Number of Responses / Hour of the Day



	Current We	Last Week	YTD
8AM-9AM	35	40	1,658
	36	43	1,737
	41	45	1,852
9AM-10AM	20	32	1,479
	22	36	1,537
	22	41	1,660
10AM-11AM	42	31	1,518
	44	32	1,569
	48	33	1,658
11AM-12PM	36	16	1,372
	40	18	1,418
	42	22	1,535
12PM-1PM	27	22	1,411
	30	23	1,469
	32	25	1,580
1PM-2PM	25	21	1,343
	25	21	1,393
	26	21	1,490
2PM-3PM	31	49	1,481
	31	49	1,541
	32	50	1,638
3PM-4PM	35	32	1,573
	36	33	1,627
	37	36	1,739
4PM-5PM	31	46	1,642
	31	46	1,688
	32	46	1,792
5PM-6PM	30	32	1,477
	30	35	1,528
	33	39	1,619
6PM-7PM	27	28	1,282
	29	28	1,308
	31	29	1,375
7PM-8PM	24	23	470
	24	23	485
	28	24	525
8PM-9PM	21	22	399
	21	22	414
	21	23	434
9PM-10PM	15	17	253
	15	18	269
	18	19	289
10PM-11PM	14	21	331
	14	23	349
	14	26	370

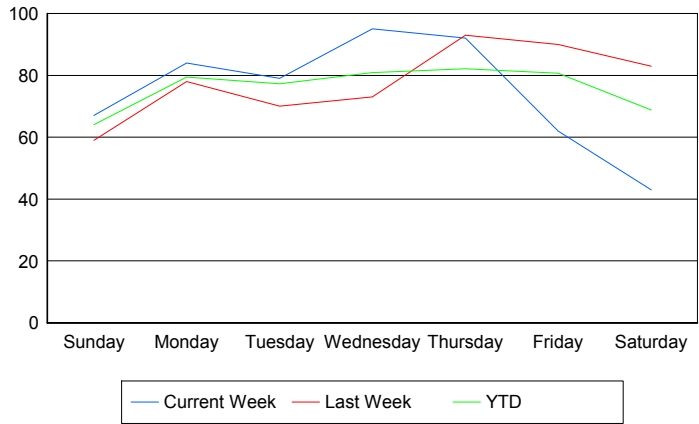
	Current We	Last Week	YTD
11PM-12AM	<b>19</b>	<b>16</b>	<b>350</b>
	<b>19</b>	<b>16</b>	<b>357</b>
	<b>19</b>	<b>18</b>	<b>383</b>

**Road Ranger / SIRV Performance By Day of Week**

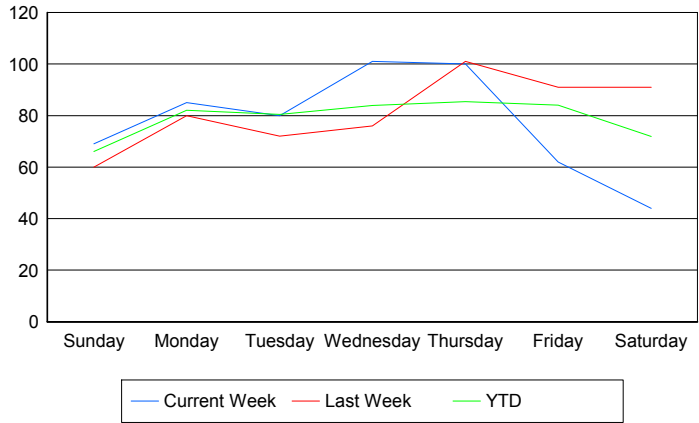
Values presented are: - Total Events with a RR/SIRV Response - Total RR/SIRV Responses, - Total Activities Performed
---

	Current We	Last Week	YTD
Sunday	67	59	1,006
	69	60	1,037
	77	64	1,112
Monday	84	78	3,862
	85	80	3,963
	87	87	4,230
Tuesday	79	70	3,778
	80	72	3,911
	85	74	4,176
Wednesday	95	73	3,958
	101	76	4,103
	109	78	4,379
Thursday	92	93	4,039
	100	101	4,158
	104	107	4,487
Friday	62	90	3,988
	62	91	4,148
	69	100	4,430
Saturday	43	83	1,141
	44	91	1,189
	47	99	1,262

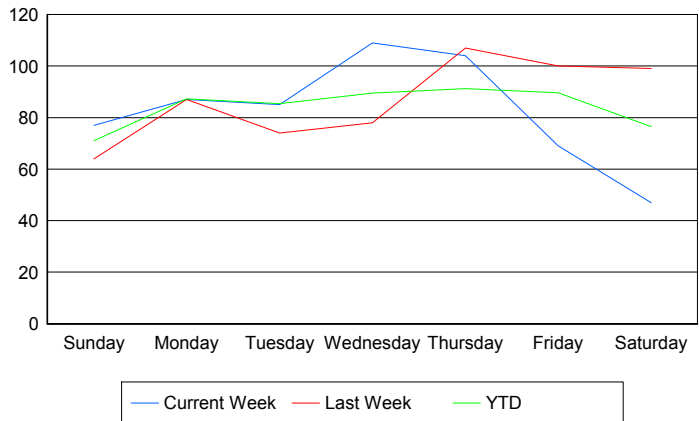
**Avg # of events with a RR/SIRV Response per Day of the Week**



**Avg # of RR/SIRV Responses per Day of the Week**



**Avg # of RR/SIRV Activities Performed per Day of the Week**



### Road Ranger / SIRV Responses per Time of Day and Day of Week

