



Weekly Performance Measures Report Palm Beach County



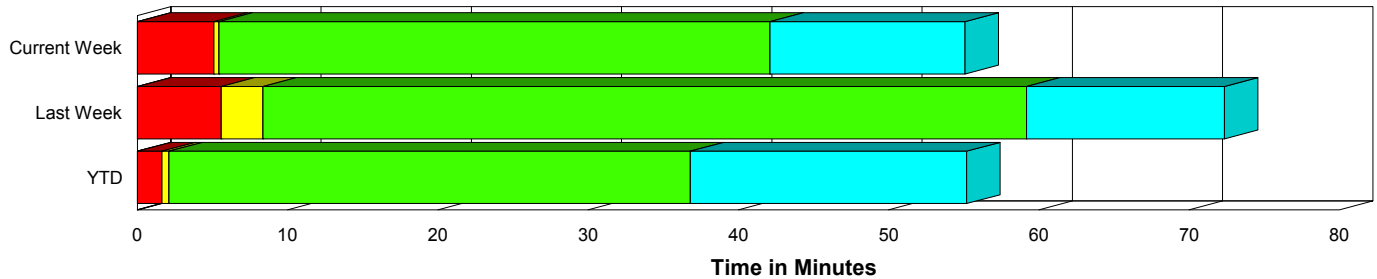
Period From Dec 27, 2009 to Jan 2, 2010

Created on:
January 04, 2010
8:52 am

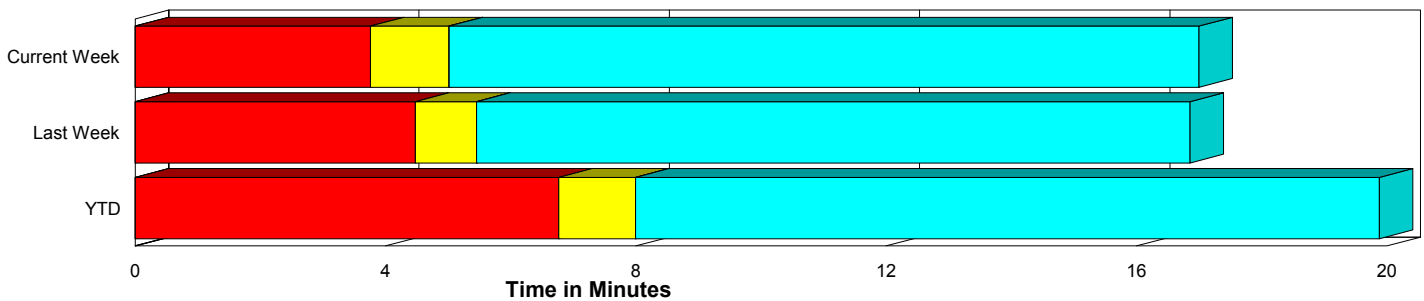
Performance Measures Summary

	Traffic Events (No Lanes Blocked)			Incidents (Lanes Blocked)		
	<u>This Week</u>	<u>Last Week</u>	<u>YTD</u>	<u>This Week</u>	<u>Last Week</u>	<u>YTD</u>
Number of Events	385	378	83	19	17	6
TMC Detection (min.)	0.00	0.00	0.00	0.00	0.00	0.00
TMC Verification (min.)	3.76	4.48	6.77	5.10	5.60	1.65
TMC Response (min.)	5.22	5.69	8.35	5.72	8.37	2.11
RR Dispatch Time (min.)	1.65	1.51	3.46	0.62	1.76	0.30
RR Response Time (min.)	3.66	4.33	5.02	5.10	6.61	1.81
Roadway Clearance (min.)				44.32	59.19	36.81
Event Clearance (min.)	17.20	17.09	20.24	57.28	72.28	55.19
# of Events w/ RR/SIRV	373	366	80	18	17	6
RR/SIRV Responses	373	366	80	18	17	6
RR/SIRV Activities	400	398	83	24	28	10

Incident Clearance Time-Line



Traffic Event (Non-Lane Blockage) Time-Line



■ Avg. TMC Detection Time	■ Avg. Time from TMC Response to Roadway Clearance*
■ Avg. Time from TMC Detection to TMC Verification	■ Avg. Time from Roadway Clearance to Incident/Event Clearance**
■ Avg. Time from TMC Verification to TMC Response	

* Roadway clearance equals all travel lanes open

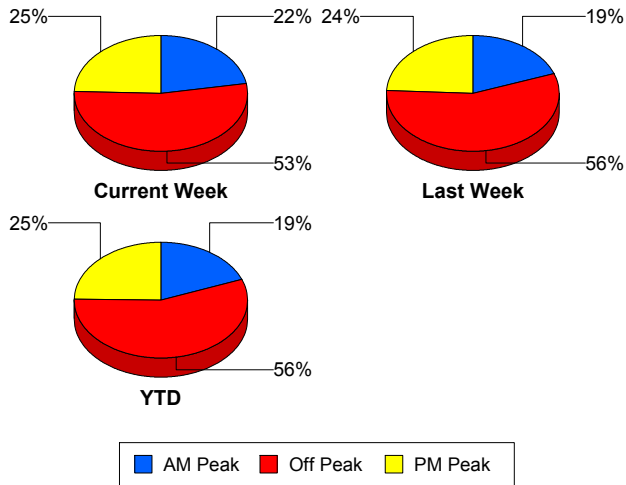
** Incident clearance equals time when last responder has left the scene

Performance Measures by Peak Period

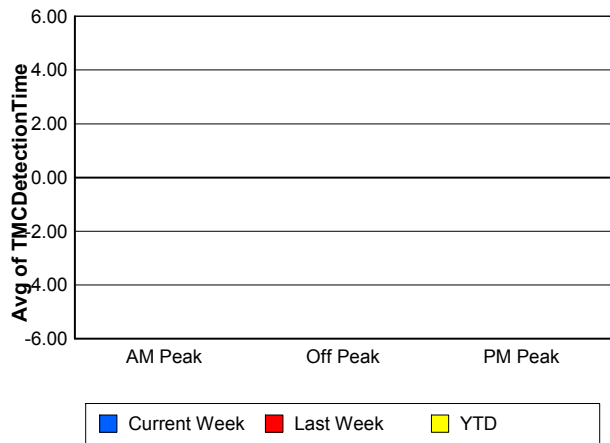
Note: AM peak period is defined as 6am to 10am and PM peak period is defined as 3pm to 7pm.

	AM Peak			Off Peak			PM Peak		
	<u>Current Week</u>	<u>Last Week</u>	<u>YTD</u>	<u>Current Week</u>	<u>Last Week</u>	<u>YTD</u>	<u>Current Week</u>	<u>Last Week</u>	<u>YTD</u>
Number of Events	90	77	17	215	222	50	99	96	22
Number of Incidents	3	3	2	13	11	2	3	3	2
TMC Detection (min.)	0.00	0.00	0.00	0.00	0.00	0.00	0.00	0.00	0.00
TMC Verification (min.)	2.36	3.58	2.89	3.92	4.61	5.68	4.96	5.08	11.18
TMC Response (min.)	4.32	4.98	5.27	5.45	6.07	6.34	5.60	5.90	13.52
RR Dispatch Time (min.)	0.86	1.37	0.51	1.49	1.52	2.15	2.53	1.65	7.85
RR Response Time (min.)	3.51	3.61	4.82	4.13	4.73	4.55	3.04	4.41	5.33
Event Clearance (min.)	16.44	17.42	23.13	20.25	20.00	18.18	18.94	19.89	32.22
Roadway Clearance (min.)	22.12	27.52	19.28	53.90	52.62	57.64	25.00	114.91	33.50
Incident Clearance (min.)	33.04	41.38	27.48	62.87	67.66	62.42	57.28	120.12	75.68
# of Events w/ RR/SIRV	87	75	16	208	214	49	96	94	21
RR/SIRV Responses	87	75	16	208	214	49	96	94	21
RR/SIRV Activities	96	85	17	221	240	53	107	101	23

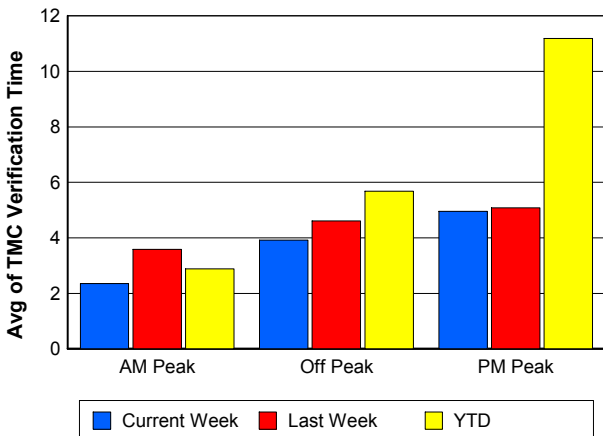
Number of Events / Peak Period



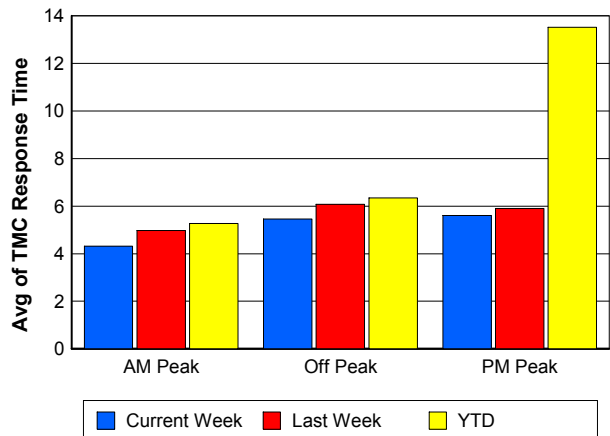
TMC Detection Time



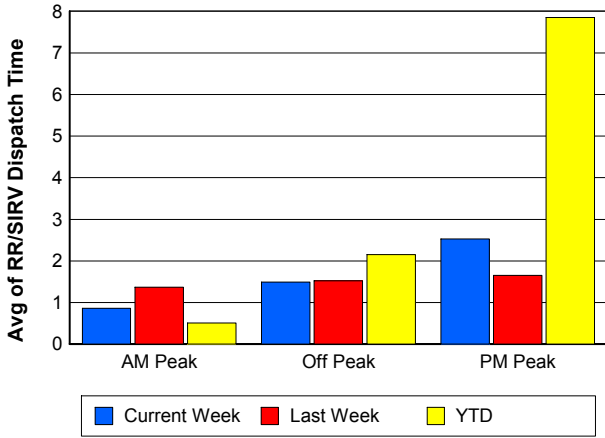
TMC Verification Time



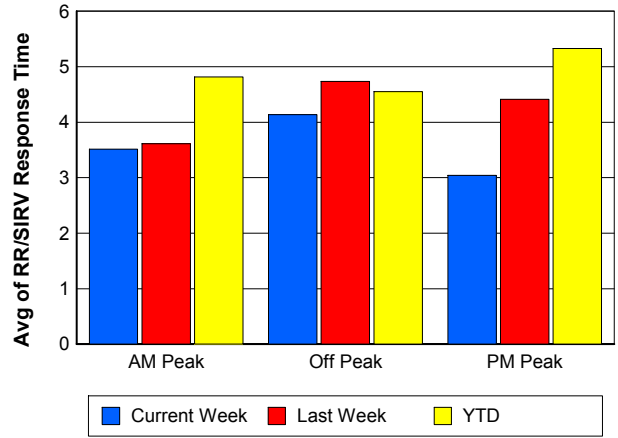
TMC Response Time



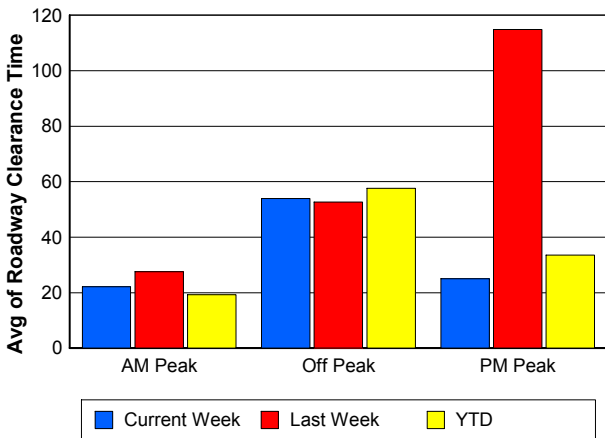
Road Ranger / SIRV Dispatch Time



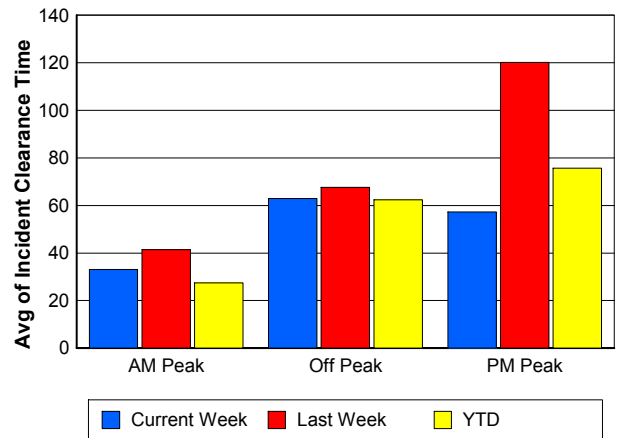
Road Ranger / SIRV Response Time



Roadway Clearance Time (2A)



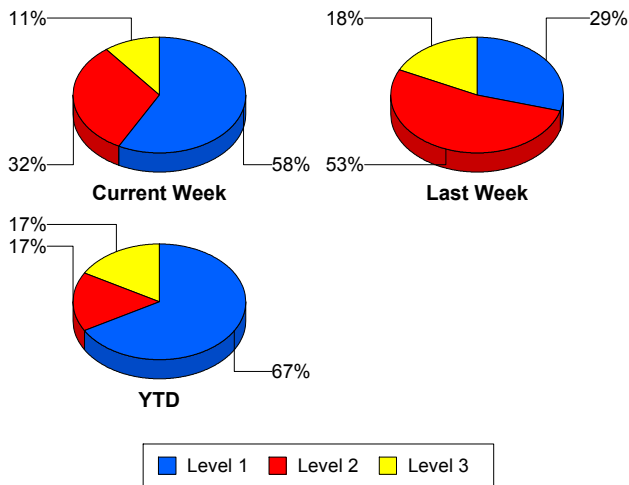
Incident Clearance Time (3B)



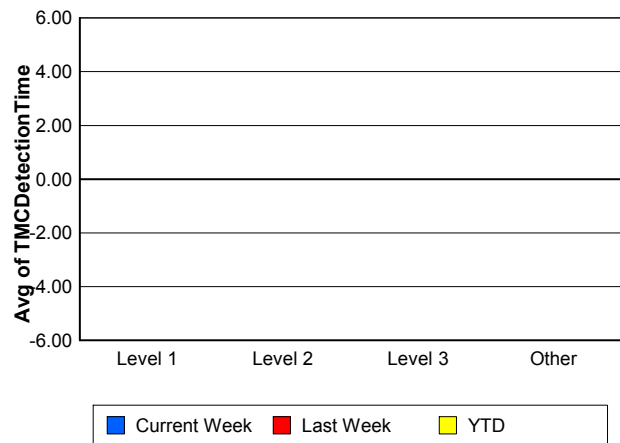
Performance Measures by Severity

	Level 1			Level 2			Level 3			Other		
	<u>This Week</u>	<u>Last Week</u>	<u>YTD</u>	<u>This Week</u>	<u>Last Week</u>	<u>YTD</u>	<u>This Week</u>	<u>Last Week</u>	<u>YTD</u>	<u>This Week</u>	<u>Last Week</u>	<u>YTD</u>
Number of Events	11	5	4	6	9	1	2	3	1	385	378	83
Number of Incidents	11	5	4	6	9	1	2	3	1	0	0	0
TMC Detection (min.)	0.00	0.00	0.00	0.00	0.00	0.00	0.00	0.00	0.00	0.00	0.00	0.00
TMC Verification (min.)	3.36	3.82	2.47	6.47	6.83	0.00	10.61	4.85	0.00	3.76	4.48	6.77
TMC Response (min.)	3.60	10.47	3.16	8.50	8.34	0.00	10.48	4.95	0.00	5.22	5.69	8.35
RR Dispatch Time (min.)	0.69	1.22	0.45	0.64	2.32	0.00	0.18	0.97	0.00	1.65	1.51	3.46
RR Resp. Time (min.)	2.90	9.26	2.71	7.86	6.02	0.00	10.30	3.98	0.00	3.66	4.33	5.02
Event Clearance (min.)	24.79	27.84	25.02	93.22	67.35	135.38	128.13	161.13	95.68	17.20	17.09	20.24
Roadway Clear. (min.)	15.51	16.55	18.19	69.61	49.39	55.02	126.93	159.63	93.05			
Incident Clearance (min.)	24.79	27.84	25.02	93.22	67.35	135.38	128.13	161.13	95.68			
# of Events w/ RR/SIRV	11	5	4	5	9	1	2	3	1	373	366	80
RR/SIRV Responses	11	5	4	5	9	1	2	3	1	373	366	80
RR/SIRV Activities	15	6	7	7	15	2	2	7	1	400	398	83

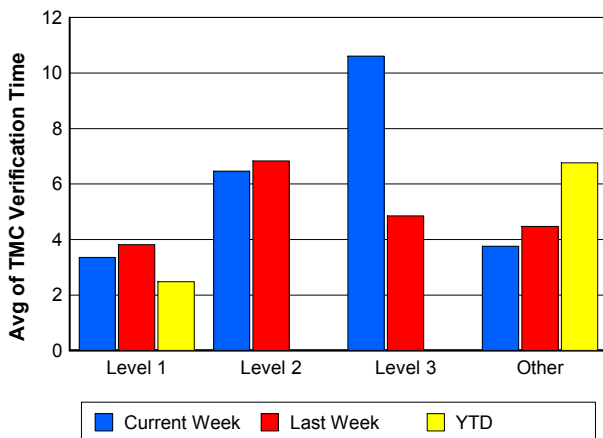
Number of Events / Severity



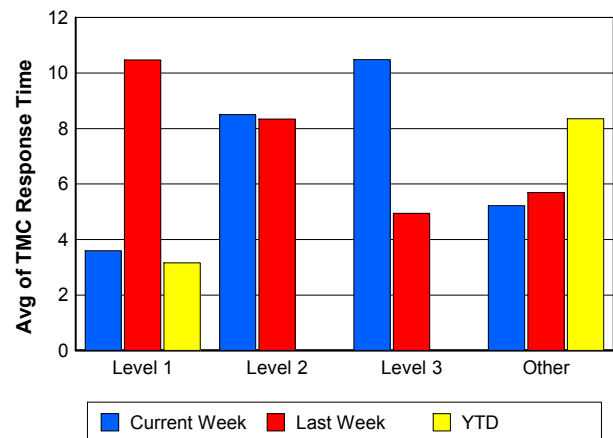
TMC Detection Time



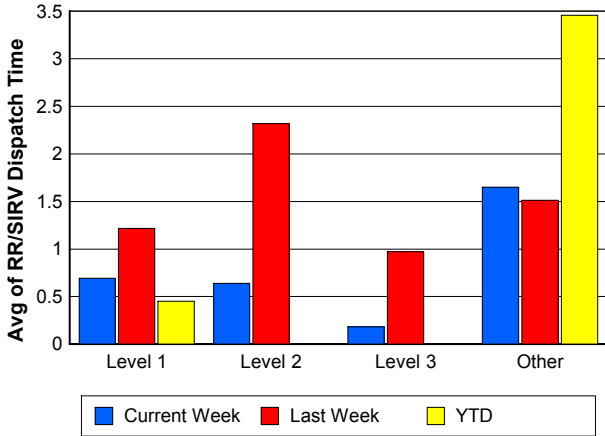
TMC Verification Time



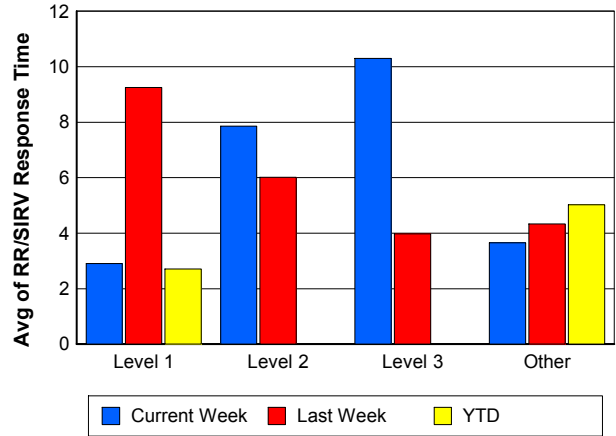
TMC Response Time



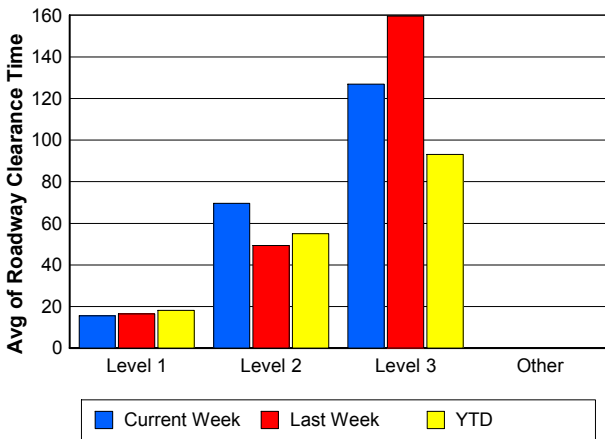
Road Ranger / SIRV Dispatch Time



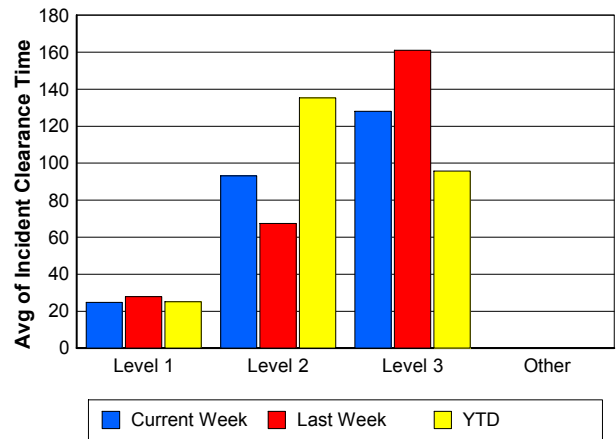
Road Ranger / SIRV Response Time



Roadway Clearance Time (2A)



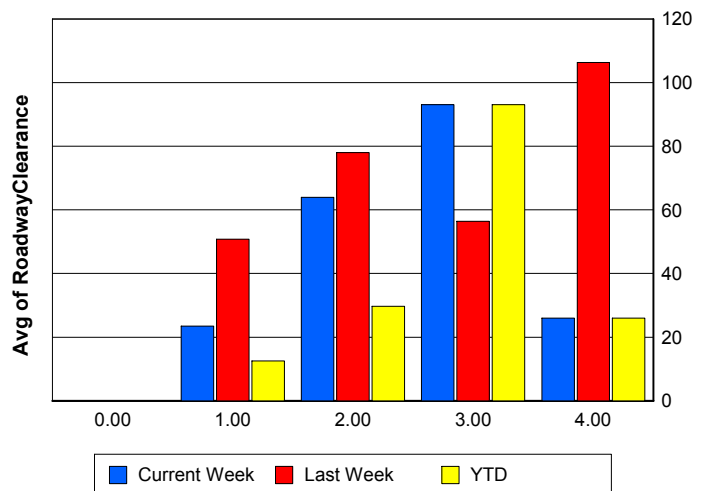
Incident Clearance Time (3B)



Roadway Clearance by Maximum Number of Lanes Blocked

	Current Week	Last Week	YTD
0			
1	23.51	50.80	12.55
2	63.94	77.95	29.74
3	93.05	56.42	93.05
4	26.00	106.30	26.00

Roadway Clearance Time (2A)

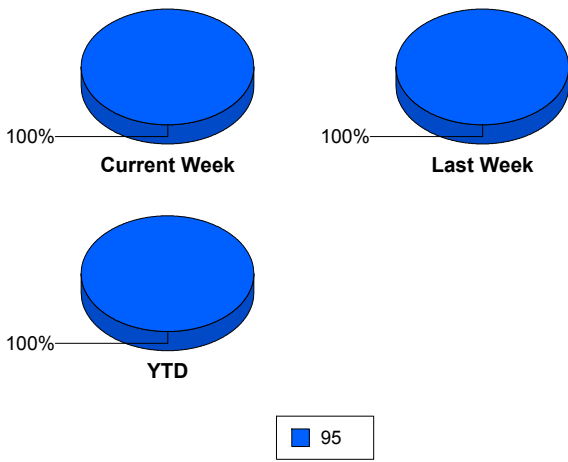


Performance Measures by Roadway

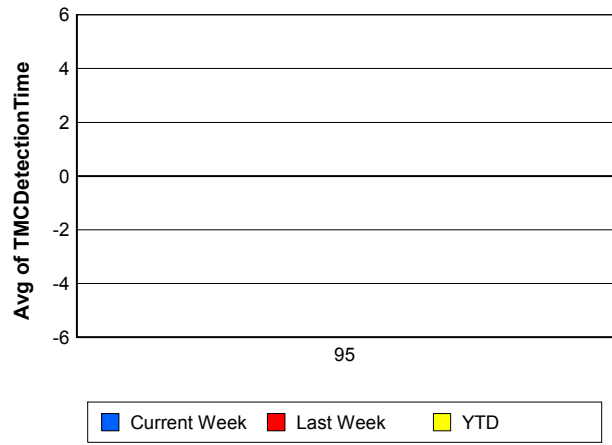
95

	<u>Current Week</u>	<u>Last Week</u>	<u>YTD</u>
Number of Events	404	395	89
Number of Incidents	19	17	6
TMC Detection (min.)	0.00	0.00	0.00
TMC Verification (min.)	3.82	4.53	6.41
TMC Response (min.)	5.24	5.81	7.90
RR Dispatch Time (min.)	1.60	1.52	3.24
RR Resp. Time (min.)	3.73	4.43	4.79
Event Clearance (min.)	19.08	19.47	22.60
Roadway Clear. (min.)	44.32	59.19	36.81
Incident Clearance (min.)	57.28	72.28	55.19
# of Events w/ RR/SIRV	391	383	86
RR/SIRV Responses	391	383	86
RR/SIRV Activities	424	426	93

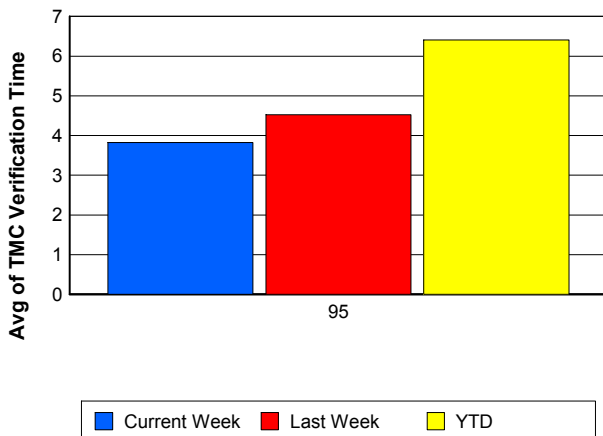
Number of Events / Roadway



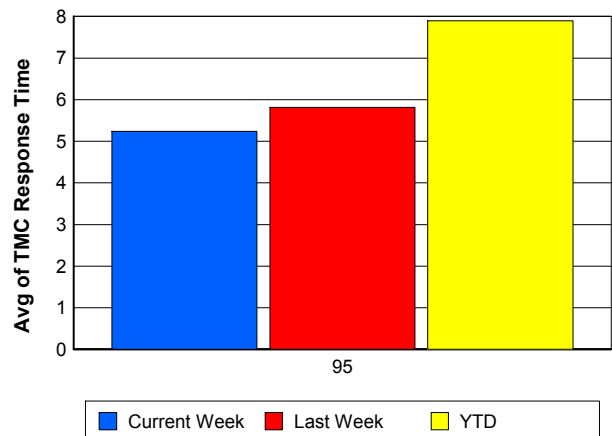
TMC Detection Time



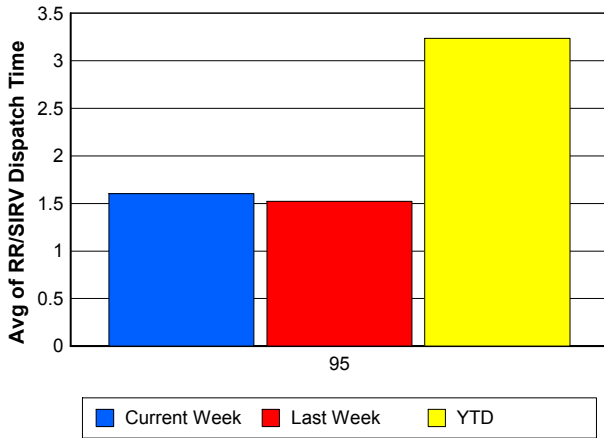
TMC Verification Time



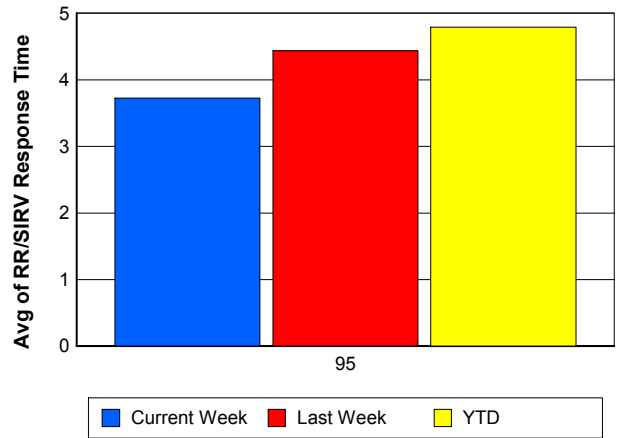
TMC Response Time



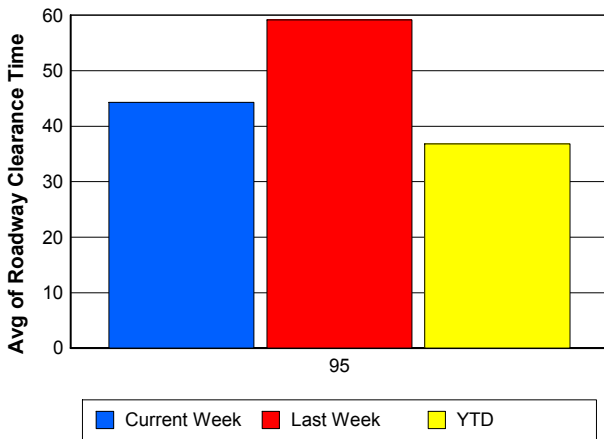
Road Ranger / SIRV Dispatch Time



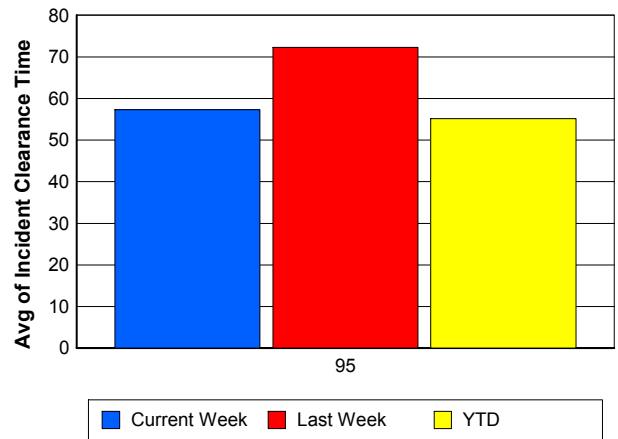
Road Ranger / SIRV Response Time



Roadway Clearance Time (2A)



Incident Clearance Time (3B)



Performance Measures by Event Type

Accident

	<u>Current Week</u>	<u>Last Week</u>	<u>YTD</u>
Number of Events	25	15	9
Number of Incidents	14	8	5
TMC Detection (min.)	0.00	0.00	0.00
TMC Verification (min.)	8.87	6.80	8.74
TMC Response (min.)	11.22	7.70	12.83
RR Dispatch Time (min.)	4.08	1.49	6.06
RR Response Time (min.)	7.14	6.21	6.77
Event Clearance (min.)	53.01	56.90	42.80
Roadway Clearance (min.)	46.69	47.47	25.56
Incident Clearance (min.)	61.64	67.49	47.09
# of Events w/ RR/SIRV	24	15	9
RR/SIRV Assists	24	15	9
RR/SIRV Activities	30	21	13

Debris on Roadway

	<u>Current Week</u>	<u>Last Week</u>	<u>YTD</u>
Number of Events	24	24	9
Number of Incidents	0	0	0
TMC Detection (min.)	0.00	0.00	0.00
TMC Verification (min.)	6.44	9.80	12.34
TMC Response (min.)	6.43	10.07	12.32
RR Dispatch Time (min.)	4.07	1.87	8.85
RR Response Time (min.)	2.36	8.20	3.47
Event Clearance (min.)	9.71	12.38	12.56
Roadway Clearance (min.)			
Incident Clearance (min.)			
# of Events w/ RR/SIRV	23	24	8
RR/SIRV Assists	23	24	8
RR/SIRV Activities	23	25	8

Disabled Vehicle

	<u>Current Week</u>	<u>Last Week</u>	<u>YTD</u>
Number of Events	326	338	63
Number of Incidents	3	6	0
TMC Detection (min.)	0.00	0.00	0.00
TMC Verification (min.)	3.54	4.10	6.13
TMC Response (min.)	4.80	5.21	6.62
RR Dispatch Time (min.)	1.24	1.46	2.30
RR Response Time (min.)	3.62	3.91	4.56
Event Clearance (min.)	17.22	17.34	20.49
Roadway Clearance (min.)	18.07	30.46	
Incident Clearance (min.)	24.16	40.42	
# of Events w/ RR/SIRV	320	334	63
RR/SIRV Assists	320	334	63
RR/SIRV Activities	354	368	68

Other

	<u>Current Week</u>	<u>Last Week</u>	<u>YTD</u>
Number of Events	23	13	5
Number of Incidents	0	0	0
TMC Detection (min.)	0.00	0.00	0.00
TMC Verification (min.)	0.00	2.47	0.00
TMC Response (min.)	1.30	17.54	0.00
RR Dispatch Time (min.)	1.87	4.19	1.36
RR Response Time (min.)	0.91	11.03	0.00
Event Clearance (min.)	9.49	14.05	5.82
Roadway Clearance (min.)			
Incident Clearance (min.)			
# of Events w/ RR/SIRV	19	5	3
RR/SIRV Assists	19	5	3
RR/SIRV Activities	12	4	1

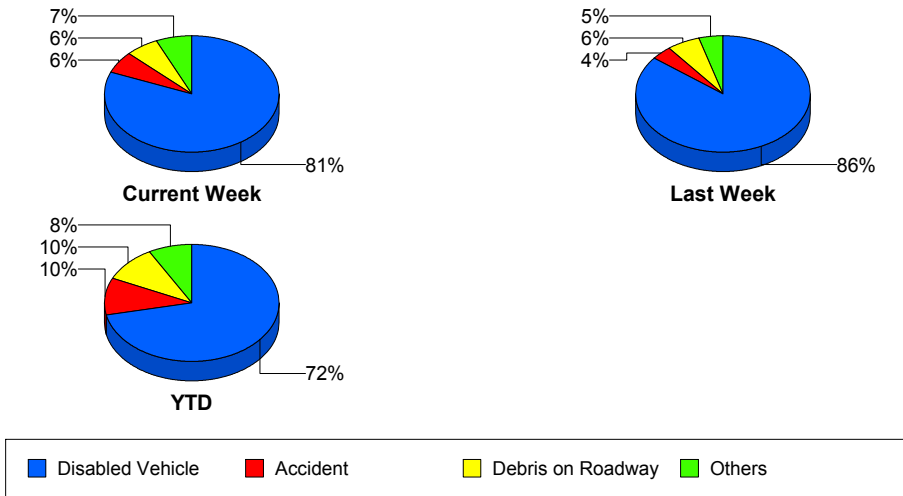
Police Activity

	<u>Current Week</u>	<u>Last Week</u>	<u>YTD</u>
Number of Events	3	4	2
Number of Incidents	1	2	1
TMC Detection (min.)	0.00	0.00	0.00
TMC Verification (min.)	0.00	4.60	0.00
TMC Response (min.)	8.43	11.78	8.43
RR Dispatch Time (min.)	0.36	0.97	0.36
RR Response Time (min.)	8.07	10.80	8.07
Event Clearance (min.)	77.80	105.14	85.10
Roadway Clearance (min.)	93.05	186.30	93.05
Incident Clearance (min.)	95.68	185.92	95.68
# of Events w/ RR/SIRV	2	4	2
RR/SIRV Assists	2	4	2
RR/SIRV Activities	2	7	2

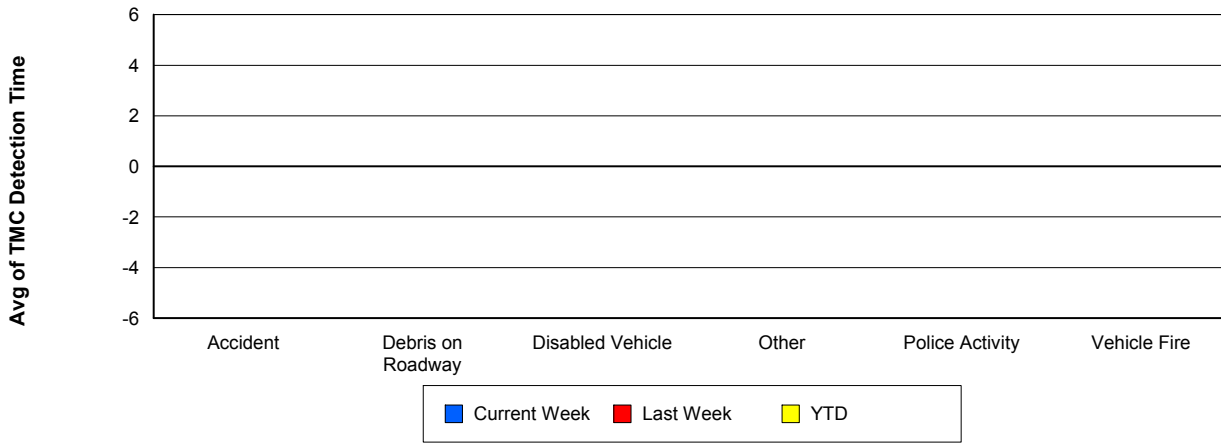
Vehicle Fire

	<u>Current Week</u>	<u>Last Week</u>
Number of Events	1	1
Number of Incidents	1	1
TMC Detection (min.)	0.00	0.00
TMC Verification (min.)	10.55	15.17
TMC Response (min.)	10.50	15.12
RR Dispatch Time (min.)	0.38	2.40
RR Response Time (min.)	10.12	12.72
Event Clearance (min.)	57.10	74.52
Roadway Clearance (min.)	41.23	71.00
Incident Clearance (min.)	57.10	74.52
# of Events w/ RR/SIRV	1	1
RR/SIRV Assists	1	1
RR/SIRV Activities	1	1

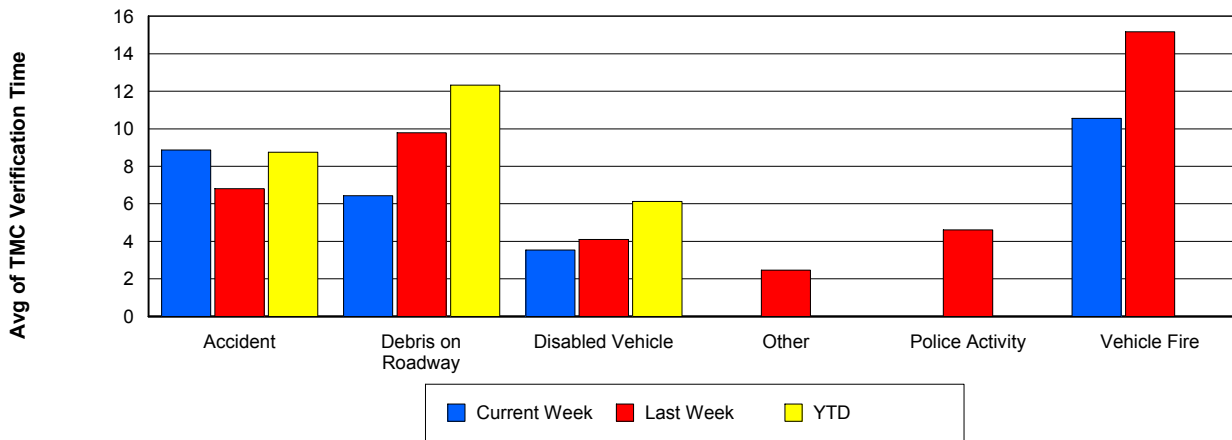
Number of Events / Event Type



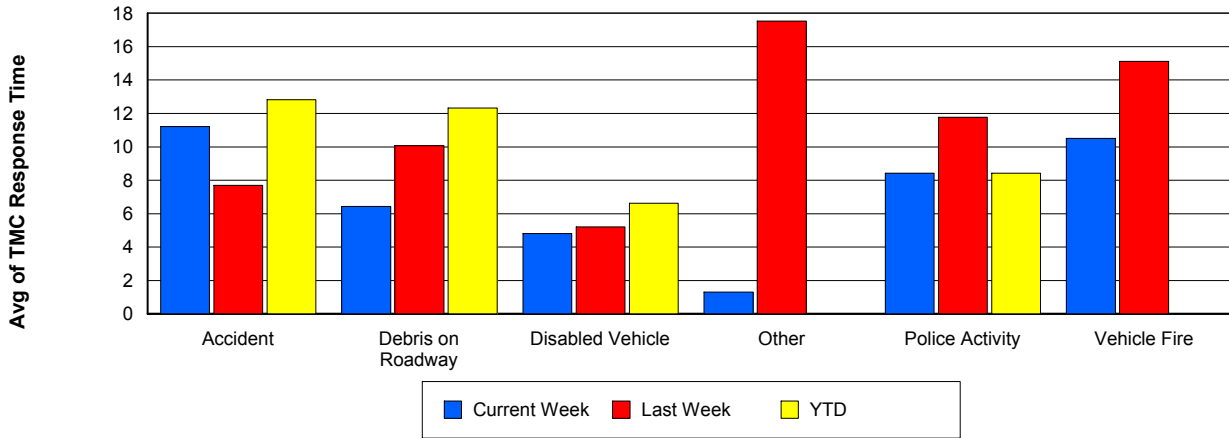
TMC Detection Time



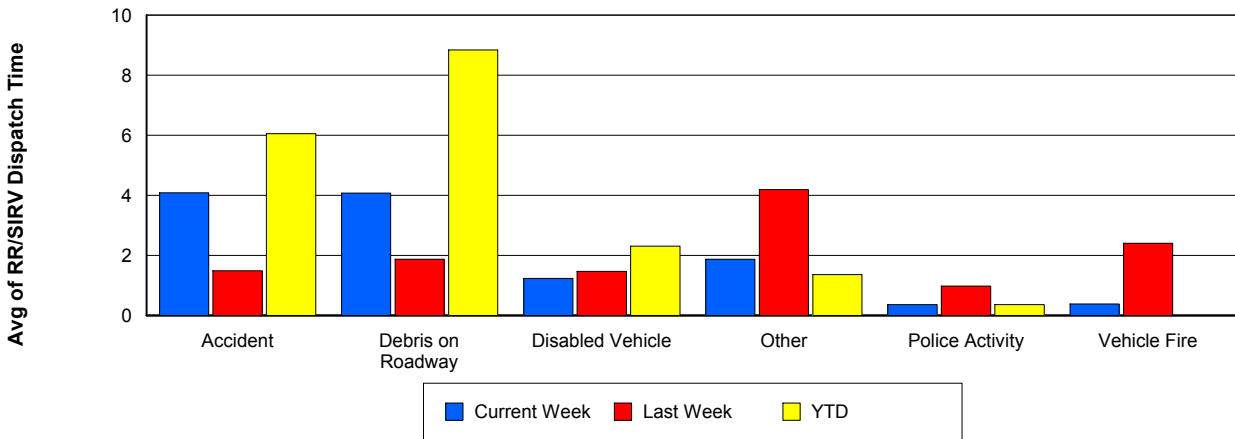
TMC Verification Time



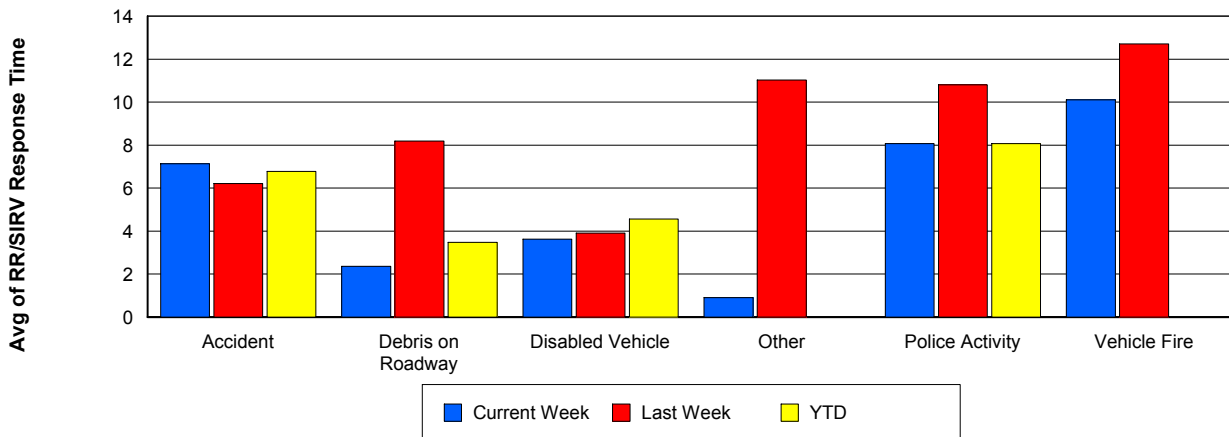
TMC Response Time



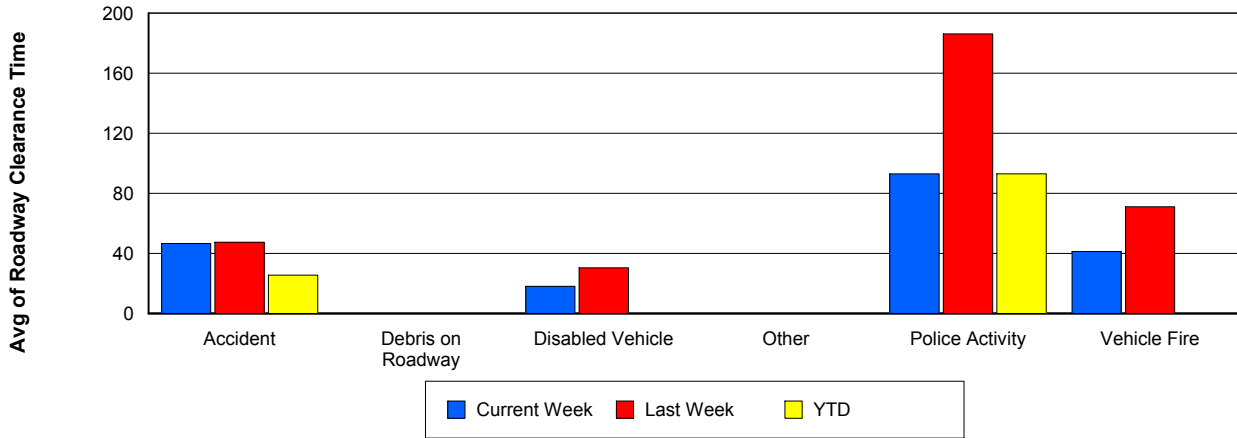
Road Ranger / SIRV Dispatch Time



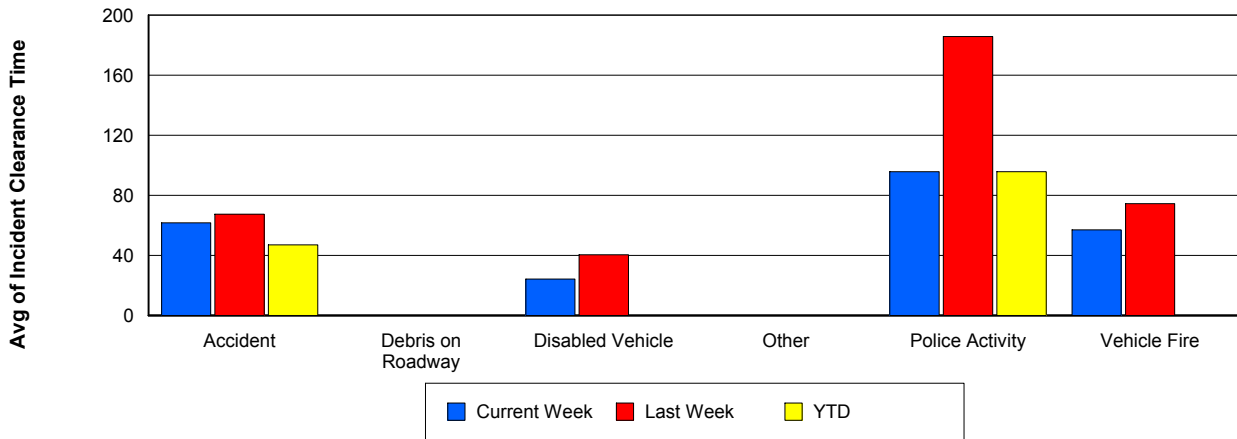
Road Ranger / SIRV Response Time



Roadway Clearance Time (2A)



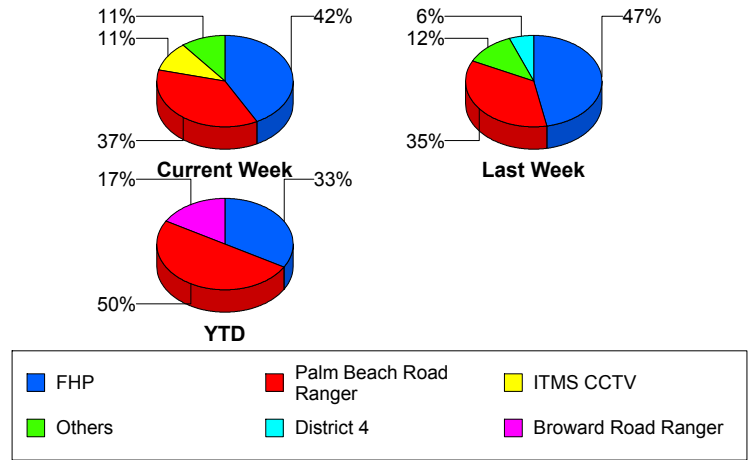
Incident Clearance Time (3B)



Incident Detection Methods

	Current Week	Last Week	YTD
Broward Road Ranger	1	0	1
District 4	0	1	0
FHP	8	8	2
ITMS	0	1	0
ITMS CCTV	2	1	0
Motorist	1	0	0
Palm Beach Road Ran	7	6	3
Total	19	17	6

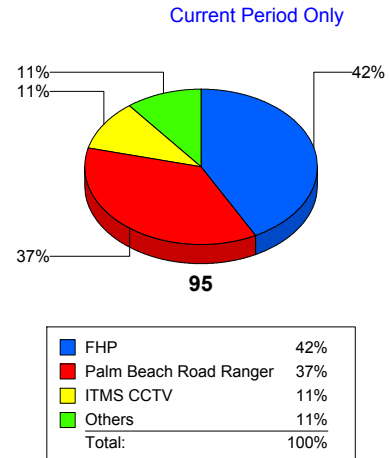
Total Incidents by Detection Method



Incident Detection Methods by Roadway

		Current Week	Last Week	YTD
95	Broward Road Ranger	1	0	1
	District 4	0	1	0
	FHP	8	8	2
	ITMS	0	1	0
	ITMS CCTV	2	1	0
	Motorist	1	0	0
	Palm Beach Road Ran	7	6	3
	Total	19	17	6
Total		19	17	6

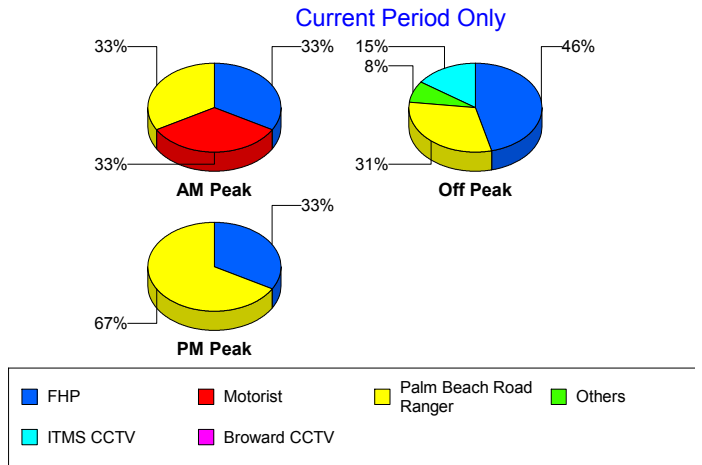
Total Events by Roadway and Detection Method



Incident Detection Methods by Peak Period

		Current Week	Last Week	YTD
AM Peak	FHP	1	2	1
	ITMS	0	1	0
	Motorist	1	0	0
	Palm Beach Road Ran	1	0	1
	Total	3	3	2
Off Peak	Broward Road Ranger	1	0	1
	District 4	0	1	0
	FHP	6	5	0
	ITMS CCTV	2	0	0
	Palm Beach Road Ran	4	5	1
	Total	13	11	2
PM Peak	FHP	1	1	1
	ITMS CCTV	0	1	0
	Palm Beach Road Ran	2	1	1
	Total	3	3	2
Total	19	17	6	

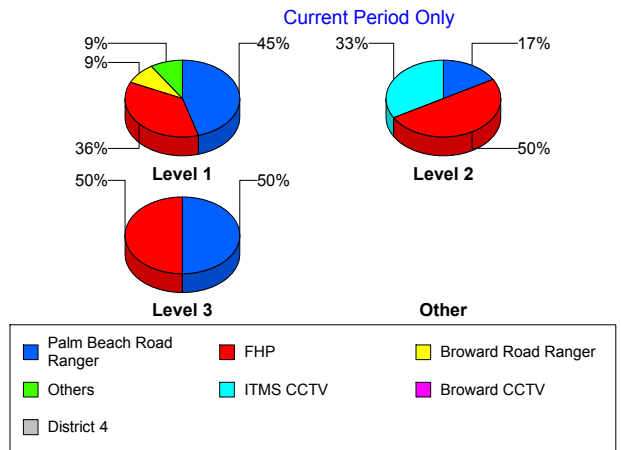
Total Events by Peak Period and Detection Method



Incident Detection Methods by Severity

		Current Week	Last Week	YTD
Level 1	Broward Road Ranger	1	0	1
	FHP	4	2	2
	ITMS CCTV	0	1	0
	Motorist	1	0	0
	Palm Beach Road Ran	5	2	1
	Total	11	5	4
Level 2	District 4	0	1	0
	FHP	3	4	0
	ITMS	0	1	0
	ITMS CCTV	2	0	0
	Palm Beach Road Ran	1	3	1
	Total	6	9	1

Total Events by Severity and Detection Method



		Current Week	Last Week	YTD
Level 3	FHP	1	2	0
	Palm Beach Road Ran	1	1	1
	Total	2	3	1
Total		19	17	6

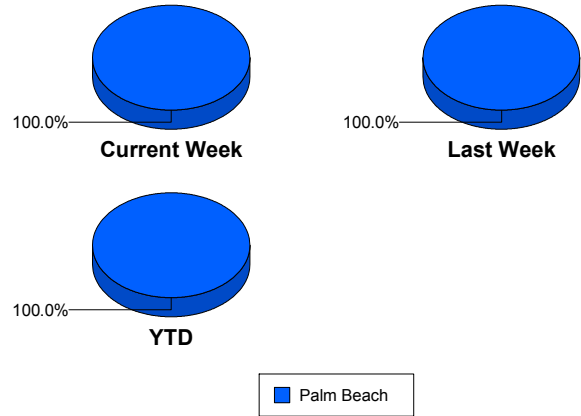
Road Ranger / SIRV Performance Measures

Road Ranger / SIRV Performance By County

Values presented are:
 - Total Events with a RR/SIRV Response
 - Total RR/SIRV Responses,
 - Total Activities Performed

	Current We	Last Week	YTD
Palm Beach	498	522	114
	519	541	118
	546	578	126

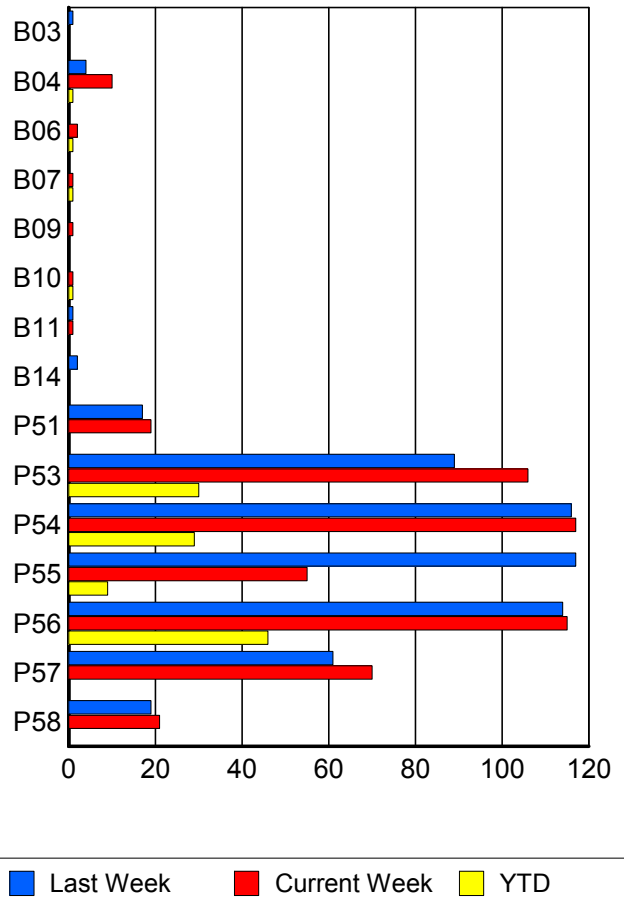
RR/SIRV Responses per County



Road Ranger / SIRV Performance By Truck

	Current We	Last Week	YTD
B03	0	1	0
	0	1	0
	0	1	0
B04	10	4	1
	10	4	1
	10	4	1
B06	2	0	1
	2	0	1
	4	0	3
B07	1	0	1
	1	0	1
	1	0	1
B09	1	0	0
	1	0	0
	1	0	0
B10	1	0	1
	1	0	1
	1	0	1
B11	1	1	0
	1	1	0
	1	1	0
B14	0	2	0
	0	2	0
	0	2	0
P51	19	17	0
	19	17	0
	20	18	0

RR/SIRV Responses per Truck



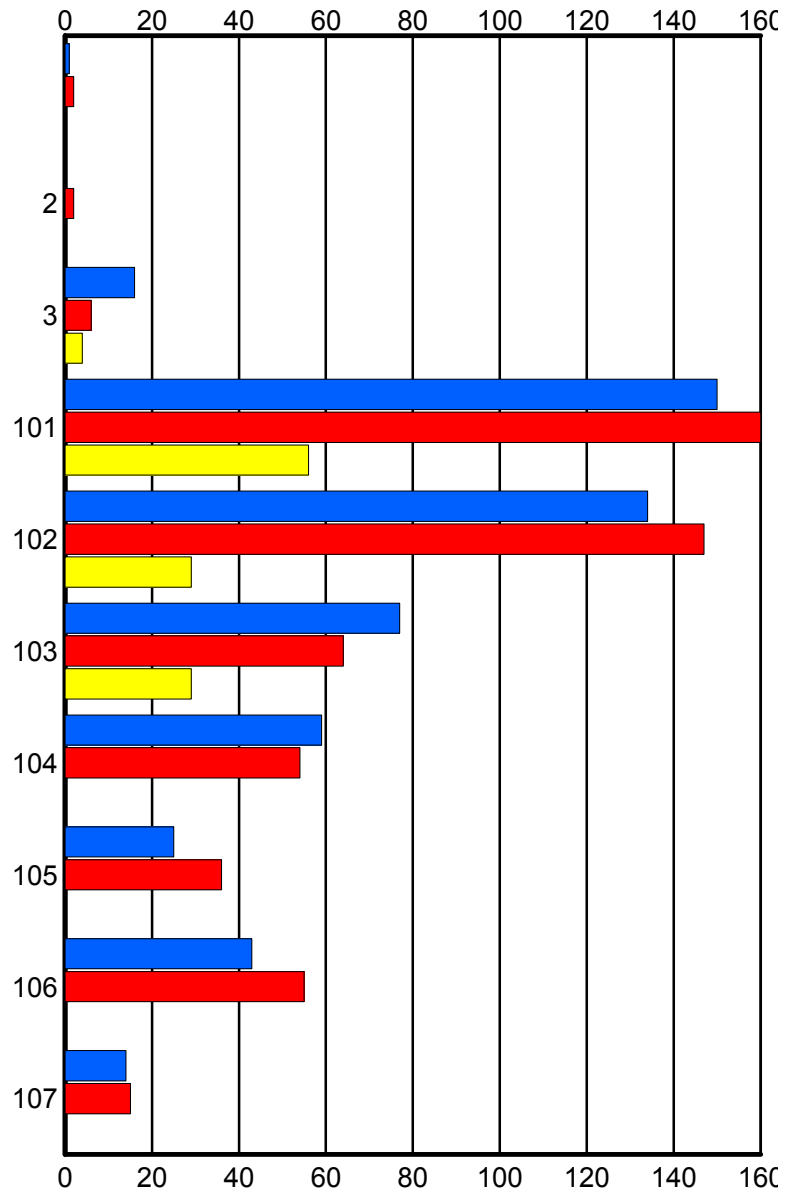
	Current We	Last Week	YTD
P53	104	89	30
	106	89	30
	107	100	31
P54	114	116	29
	117	116	29
	125	122	30
P55	54	114	9
	55	117	9
	61	122	11
P56	112	110	45
	115	114	46
	121	122	48
P57	68	60	0
	70	61	0
	72	67	0
P58	21	19	0
	21	19	0
	22	19	0

Road Ranger / SIRV Performance By Beat

	Current We	Last Week	YTD
	1	2	0
	1	2	0
	1	2	0
2	0	2	0
	0	2	0
	0	2	0
3	15	6	3
	16	6	4
	18	6	6
101	148	156	55
	150	160	56
	161	171	61
102	133	146	29
	134	147	29
	135	161	30
103	76	64	29
	77	64	29
	80	69	29
104	56	52	0
	59	54	0
	65	56	0
105	25	36	0
	25	36	0
	27	38	0
106	40	54	0
	43	55	0
	44	58	0
107	14	15	0
	14	15	0
	15	15	0

Values presented are:
 - Total Events with a RR/SIRV Response
 - Total RR/SIRV Responses,
 - Total Activities Performed

RR/SIRV Responses per Beat



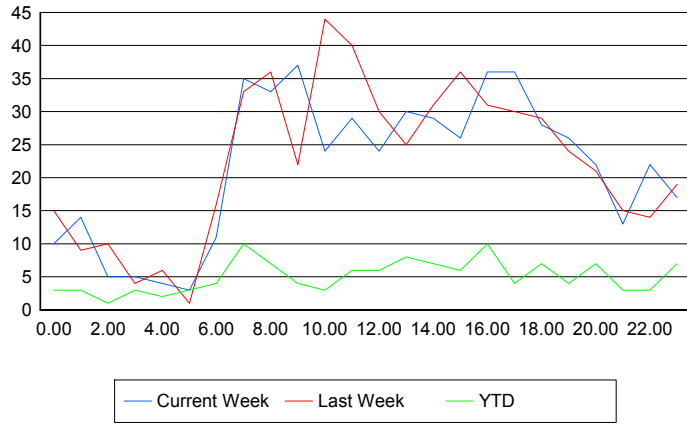
■ Current Week
 ■ Last Week
 ■ YTD

Road Ranger / SIRV Performance By Time of Day

Values presented are:
 - Total Events with a RR/SIRV Response
 - Total RR/SIRV Responses,
 - Total Activities Performed

	Current We	Last Week	YTD
12AM-1AM	9	15	2
	10	15	3
	11	18	4
1AM-2AM	13	9	3
	14	9	3
	14	10	3
2AM-3AM	5	8	1
	5	10	1
	7	11	1
3AM-4AM	5	4	3
	5	4	3
	5	4	3
4AM-5AM	4	6	2
	4	6	2
	4	7	2
5AM-6AM	2	1	0
	3	1	0
	3	1	0
6AM-7AM	11	15	4
	11	16	4
	11	17	4
7AM-8AM	35	32	10
	35	33	10
	37	34	10
8AM-9AM	31	35	6
	33	36	7
	39	41	8
9AM-10AM	36	20	4
	37	22	4
	39	22	4
10AM-11AM	24	42	3
	24	44	3
	26	48	4
11AM-12PM	28	36	6
	29	40	6
	29	42	6
12PM-1PM	23	27	6
	24	30	6
	25	32	6

Number of Responses / Hour of the Day



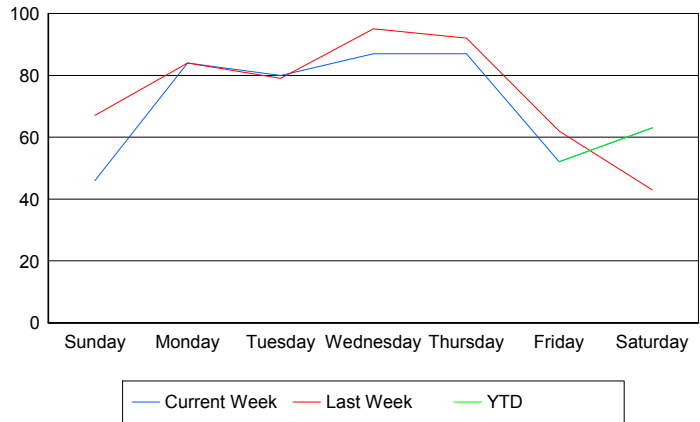
	Current We	Last Week	YTD
1PM-2PM	28	25	8
	30	25	8
	30	26	8
2PM-3PM	29	31	7
	29	31	7
	29	32	7
3PM-4PM	25	35	5
	26	36	6
	28	37	7
4PM-5PM	35	31	9
	36	31	10
	37	32	10
5PM-6PM	32	30	4
	36	30	4
	39	33	4
6PM-7PM	26	27	7
	28	29	7
	29	31	8
7PM-8PM	25	24	4
	26	24	4
	26	28	4
8PM-9PM	21	21	7
	22	21	7
	24	21	9
9PM-10PM	12	15	3
	13	15	3
	14	18	3
10PM-11PM	22	14	3
	22	14	3
	22	14	3
11PM-12AM	17	19	7
	17	19	7
	18	19	8

Road Ranger / SIRV Performance By Day of Week

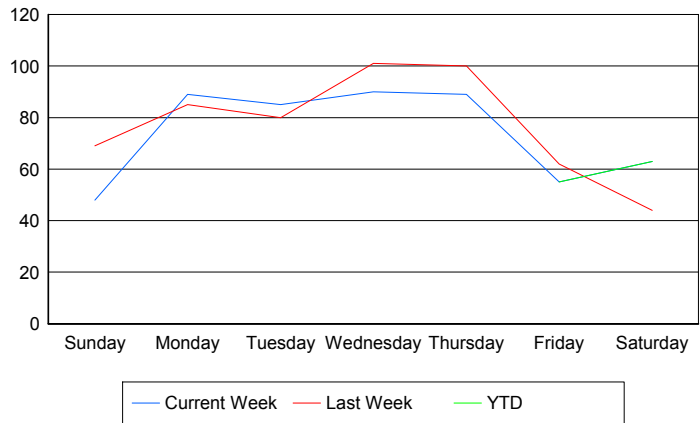
Values presented are:
 - Total Events with a RR/SIRV Response
 - Total RR/SIRV Responses,
 - Total Activities Performed

	Current We	Last Week	YTD
Sunday	46	67	0
	48	69	0
	50	77	0
Monday	84	84	0
	89	85	0
	94	87	0
Tuesday	80	79	0
	85	80	0
	88	85	0
Wednesday	87	95	0
	90	101	0
	95	109	0
Thursday	87	92	0
	89	100	0
	93	104	0
Friday	52	62	52
	55	62	55
	57	69	57
Saturday	63	43	63
	63	44	63
	69	47	69

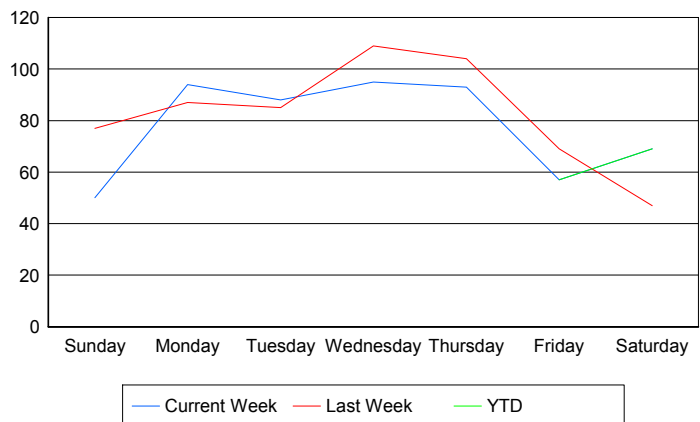
Avg # of events with a RR/SIRV Response per Day of the Week



Avg # of RR/SIRV Responses per Day of the Week



Avg # of RR/SIRV Activities Performed per Day of the Week



Road Ranger / SIRV Responses per Time of Day and Day of Week

